

**ASX ANNOUNCEMENT 23 April 2026**

**Star of Mangaroon – Key Approval Paves the Way for Development**

**HIGHLIGHTS** (All figures are in A\$ unless otherwise stated)

- The Mine Development and Closure Proposal (MDCP) for open pit mining at the Star of Mangaroon has received regulatory approval. The Native Vegetation Clearing Permit (NVCP) is expected to be received shortly.
- Dreadnought is another step closer to realising its strategy of transforming into a self-funded explorer. This strategy involves a high-grade open pit at the Star of Mangaroon where funding, development, haulage & processing are outsourced to third parties. In this way, there is reduced reliance on market funding and internal cashflows are aimed at making life-changing discoveries.

**Dreadnought Resources Ltd (“Dreadnought”) is pleased to report that it has received the key mining approval for an open pit at the Star of Mangaroon, part of the 100% owned Mangaroon Gold Project, in the Gascoyne region of WA.**

Dreadnought’s Managing Director, Dean Tuck, commented: “The MDCP approval is a step towards developing the Star of Mangaroon open pit with our JV partner Black Cat, and generating cash-flow which, is a key pillar of our Finding More Gold, Faster strategy.

Dreadnought will be following a similar commercialisation strategy in relation to Metzke’s Find in due course.”

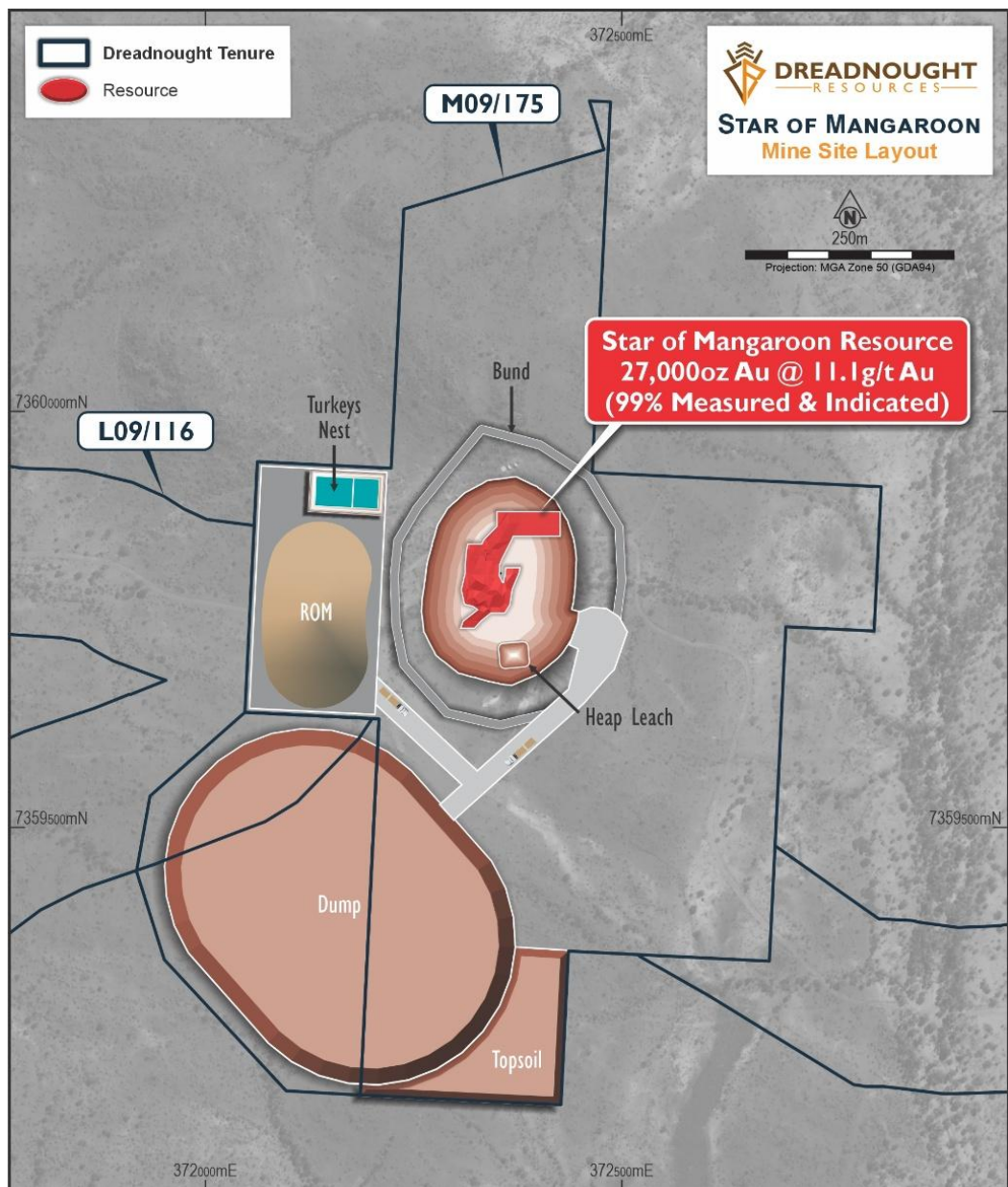


Figure 1: Star of Mangaroon open pit mine infrastructure on mining lease M09/175

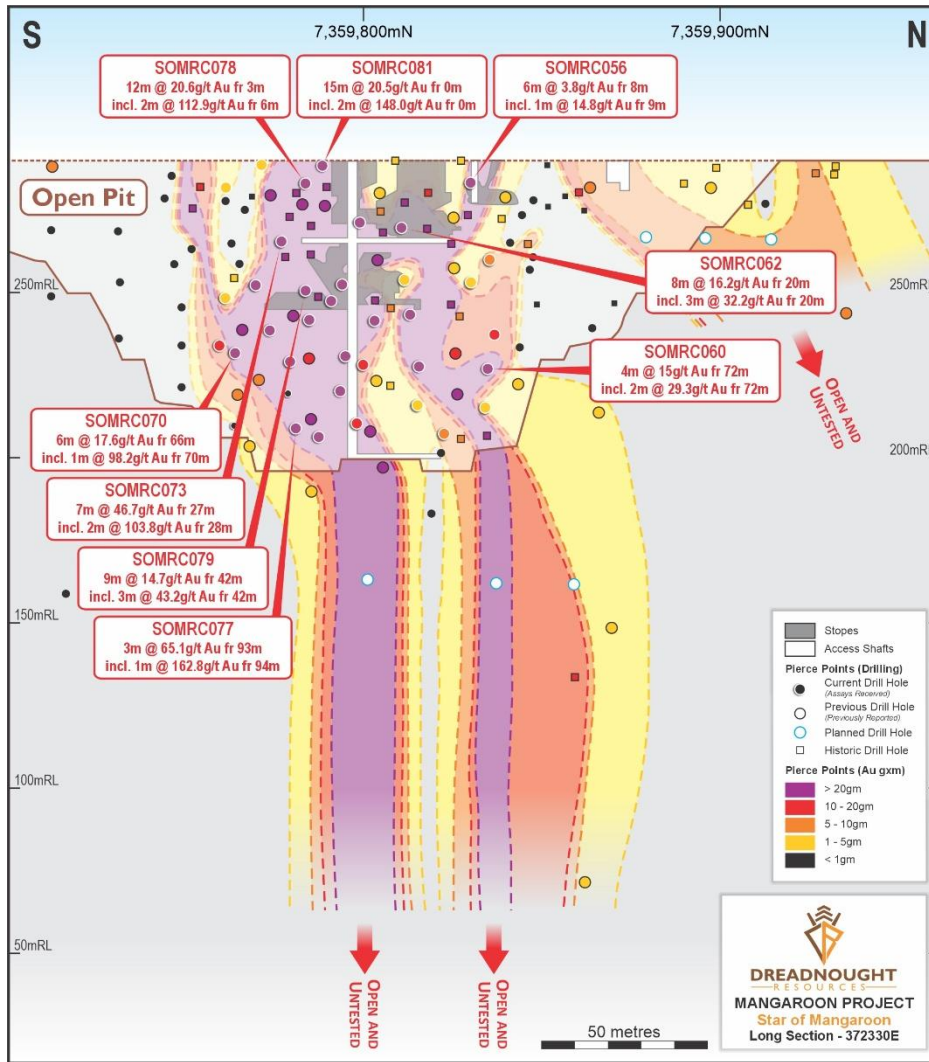
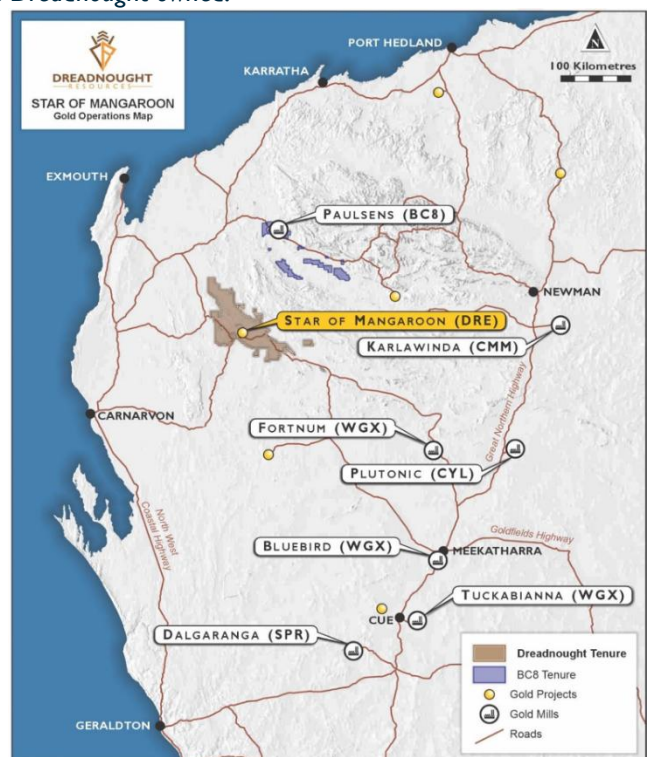
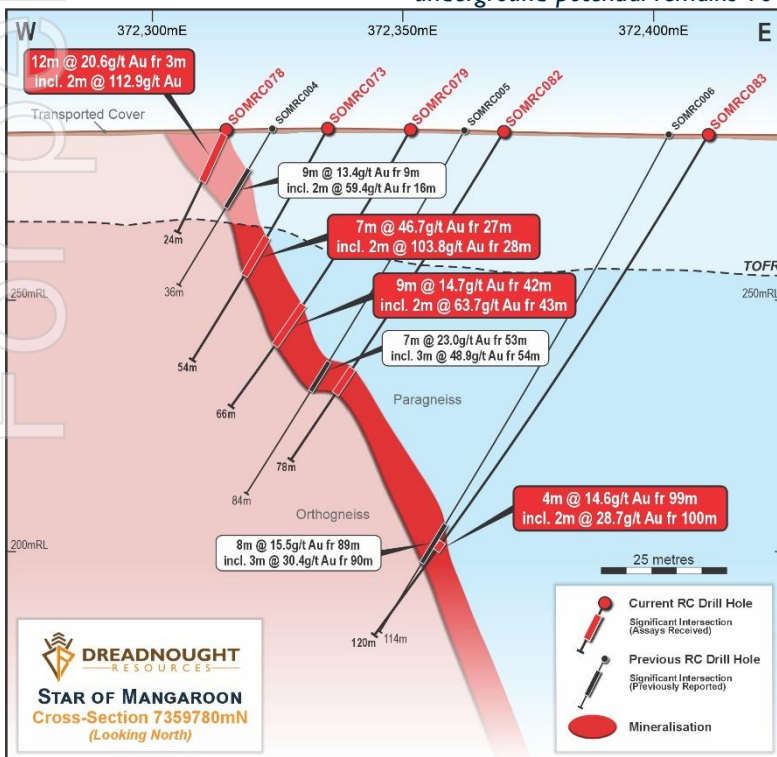


Figure 2: Long section image of Star of Mangaroon showing the mineralisation in relation to the planned open pit. All underground potential remains 100% Dreadnought owned.



Figures 3 & 4: Cross section highlighting consistent high-grade gold. Star of Mangaroon location relative to Paulsens processing facility.

## Dreadnought's work plan summary

	June 2026 Quarter	Sept 2026 Quarter	Dec 2026 Quarter
<b>Star of Mangaroon Mine</b>	Approvals and commencement of mining, production and processing through Paulsens Gold Operations (BC8 JV)		
<b>Mangaroon Discovery Drilling</b>		RC drilling of defined targets at Bordah (Steve's Find), High Range North, High Range South, Minga Bar camp scale targets	
<b>Mangaroon Exploration</b>	Target definition work (soils and gradient array IP) at Bordah, High Range North, High Range South, Minga Bar camp scale targets		
<b>Metzke's Find Studies and Approvals</b>	Technical and Environmental Studies	Resource update and Scoping Study Mining Proposal and Closure Plan submission	
<b>Metzke's Find Drilling</b>	Metzke's Find Resource and study related RC and diamond drilling		
<b>Illaara Exploration and Discovery</b>	Phase 1 Air core drilling	Phase 2 air core drilling	Phase 3 air core drilling / RC drilling (pending results)
<b>Gifford Creek</b>	Mineralogical and Metallurgical test-work		

## Upcoming News

- **April:** Quarterly Activities and Cashflow Report
- **April to June:** Results from RC drilling at Metzke's Find — Illaara Gold
- **April to August:** Results from air core drilling — Illaara Gold
- **April:** Commencement of target definition work – Mangaroon Gold
- **May:** Upgrade JORC Exploration Target, Stinger – Gifford Creek
- **May to June:** Final mineralogy results – Gifford Creek
- **June / July:** Commencement of metallurgical test work – Gifford Creek
- **June / July:** Results of target definition work – Mangaroon Gold
- **June / July:** Results of target generation work – Mangaroon South
- **July / August:** Updated Metzke's Find Resource – Illaara Gold

## For further information please refer to previous ASX announcements:

- 12 September 2022 *Star of Mangaroon Acquisition & Consolidation*
- 7 June 2023 *Mangaroon Gold Review and Further Consolidation*
- 11 December 2023 *Thick, High-Grade Gold Including 7m @ 23.0g/t Au Consolidation, Growth & Commercialisation*
- 26 July 2024 *Exceptional Gold Recoveries from Star of Mangaroon*
- 14 October 2024 *Shallow, High-Grade, 84% Indicated Au Resource*
- 27 November 2024 *Robust Scoping Study for Star of Mangaroon*
- 28 January 2025 *36% Increase in High-Grade M&I Resource – Star of Mangaroon*
- 24 September 2025 *Updated Study for Star of Mangaroon*
- 29 October 2025 *Turn-key Funding, Development, Haulage and Processing*
- 2 December 2025

~Ends~

For further information please contact:

**Dean Tuck**  
Managing Director  
Dreadnought Resources Limited  
E: dtuck@dreres.com.au

**Jessamyn Lyons**  
Company Secretary  
Dreadnought Resources Limited  
E: jlyons@dreres.com.au

*This announcement is authorised for release to the ASX by the Board of Dreadnought.*

## Snapshot – Mangaroon Gold (100%)

### Mangaroon Gold is Large Scale

- Mangaroon covers ~5,000kms<sup>2</sup> with an initial focus on the gold system situated over the Mangaroon Shear Zone between the crustal scale Minga Bar and Edmund Faults with multiple phases of intrusions. Numerous historical workings along the Mangaroon Shear Zone have only seen limited drilling. This area also contains the ~12km x 6km Bordah and ~50km long High Range prospects where limited previous exploration has identified outcropping gold and base metal mineralisation.

### Self-Funded Explorer Strategy

- Dreadnought's strategy is to transform into a self-funded explorer. This involves a high-grade open pit at the Star of Mangaroon where funding, development, haulage and processing are outsourced to third parties. This is a common model in WA given the robust gold price. In this way, there is reduced reliance on market funding and internal cashflows are aimed at making life-changing discoveries.

### Consolidation Provides for First Ever Modern Exploration

- All historical workings and known gold occurrences relate to outcropping mineralisation. There has been minimal historical and modern exploration due to fractured, small-scale ownership with Dreadnought now undertaking modern exploration for the first time.

### Significant, Step-change, Growth Potential

- Five historical mines developed on outcropping mineralisation and dozens of gold occurrences along highly prospective structural corridors.
- Dreadnought is deploying modern geochemical and geophysical techniques to explore for mineralisation under shallow cover. These techniques have already generated new prospects with stronger and larger signatures than the historical mines, including the region's largest high-grade producer at the Star of Mangaroon mine.
- Project-wide stream sediment sampling and geophysical surveys have identified additional camp scale prospects at Bordah and High Range.

### Shallow, High-grade Gold

- The Resource at Star of Mangaroon contains **shallow, high-grade gold** as per Table 1 below:

Table 1: Resource (2 g/t Au cut-off grade) - Numbers may not add up due to rounding. \*Surface reported at a 0.5g/t Au cut-off.

Type	Measured			Indicated			Inferred			Total		
	Tonnes	Au (g/t)	Au (Oz)	Tonnes	Au (g/t)	Au (Oz)	Tonnes	Au (g/t)	Au (Oz)	Tonnes	Au (g/t)	Au (Oz)
Surface*							8,300	1.0	300	8,300	1.0	300
Transition	6,300	24.9	5,100	3,300	6.5	700				9,600	18.6	5,800
Fresh	33,200	13.5	14,400	23,500	8.5	6,400	1,000	5.1	200	57,700	11.3	21,000
<b>Total</b>	<b>39,500</b>	<b>15.3</b>	<b>19,400</b>	<b>26,800</b>	<b>8.2</b>	<b>7,100</b>	<b>9,300</b>	<b>1.4</b>	<b>400</b>	<b>75,600</b>	<b>11.1</b>	<b>27,000</b>

### Exceptional Metallurgical Recoveries

- The region is known for its free gold. Accordingly, metallurgical work at Star of Mangaroon produced exceptional recoveries from standard gravity and carbon-in-leach circuits averaging 96.7% combined recovery including an average 74.4% gravity recovery (ASX 14 Oct 2024).

## Mangaroon Project

Mangaroon covers ~5,000km<sup>2</sup> and is located 250kms south-east of Exmouth in the Gascoyne Region of WA. Since 2020, Dreadnought has identified three major focus areas within the Mangaroon Project:

### Mangaroon Gold (100%)

Outcropping gold mineralisation was first identified and mined at Mangaroon by local pastoralists and prospectors in the 1960s and has seen no modern gold exploration. Dreadnought has consolidated this gold field and is undertaking the first modern exploration across the region which has identified five camp scale gold opportunities at Bordah, High Range, Alma, Minga Bar and Star of Mangaroon.

In addition, the project contains granted mining leases that provide an opportunity for cashflow including the Star of Mangaroon Mine where Dreadnought has delivered a 23,400 oz Resource at 12.8 g/t Au (84% Indicated)

### Gifford Creek Critical Metals (100%)

Dreadnought discovered the Yin Ironstones and the Gifford Creek Carbonatite in 2021. Since then, the Gifford Creek Carbonatite Complex has emerged as a globally significant, rapidly growing, potential source of critical minerals. Highlights include:

- Discovery of the Yin REE Ironstone Complex and delivery of a 30.0 Mt @ 1.04% TREO Resource over only ~4.6km – including a Measured and Indicated Resource of 26.3 Mt @ 1.04% TREO (ASX 30 Nov 2023).
- Discovery of the globally significant, Nb-REE-P-Ti-Sc enriched Gifford Creek Carbonatite (ASX 7 Aug 2023).
- Delivery of a large, independent initial Resource of 10.8 Mt @ 1.00% TREO at the Gifford Creek Carbonatites, containing a range of critical minerals including rare earths, niobium, phosphate, titanium and scandium (ASX 28 Aug 2023).
- Discovery of Stinger Nb-REE-P-Ti-Sc-Zr bearing carbonatite and delivery of the Stinger Niobium Exploration Target (ASX 3 Mar 2025, 29 Sept 2025).

### Money Intrusion Ni-Cu-PGEs (Teck Earn-In)

The Money Intrusion is a ~45km long mafic intrusion prospective for Ni-Cu-PGE massive sulphides. In 2023, Dreadnought discovered high tenor nickel-copper massive sulphides confirming the potential of this new system. Dreadnought entered in to a \$15M Farm-In and Joint Venture agreement with Teck Resources, a leading Canadian resource company, to earn up to 75% of the Money Intrusion tenements.

### Illaara Gold Project (100%)

Illaara is located ~190km northwest of Kalgoorlie in the Yilgarn Craton. The project comprises ~800km<sup>2</sup> covering ~70km of strike along the Illaara greenstone belts. Illaara was acquired off Newmont in 2019 as an early stage exploration project prospective for typical Archean mesothermal lode gold deposits. Dreadnought has delivered a 14,900 oz @ 6.8g/t Au Resource at Metzke's Find (72% Indicated). Prior to consolidation by Dreadnought, Illaara was predominantly held by iron ore explorers and remains highly prospective for iron ore amongst other commodities.

### Kimberley Cu-Au-Sb Project (Tarraji 80% / Yampi 100%)

Tarraji-Yampi covers ~420km<sup>2</sup> is located only 85km from Derby in the West Kimberley region of WA and was locked up as a Defence Reserve since 1978. The project has outcropping mineralisation and historical workings which have seen no modern exploration.

In 2021, Dreadnought discovered high-grade Cu-Au massive sulphides at Orion with results to date indicating a large scale, Proterozoic Cu-Au VMS system at Tarraji-Yampi, similar to DeGrussa and Monty in the Bryah Basin.

In addition, the project contains outcropping high-grade Cu-Ag-Sb-Bi Veins at Rough Triangle and Grant's Find.



## Cautionary Statement

This announcement and information, opinions or conclusions expressed in the course of this announcement contains forecasts and forward-looking information. Such forecasts, projections and information are not a guarantee of future performance, involve unknown risks and uncertainties. Actual results and developments will almost certainly differ materially from those expressed or implied. There are a number of risks, both specific to Dreadnought, and of a general nature which may affect the future operating and financial performance of Dreadnought, and the value of an investment in Dreadnought including and not limited to title risk, renewal risk, economic conditions, stock market fluctuations, commodity demand and price movements, timing of access to infrastructure, timing of environmental approvals, regulatory risks, operational risks, reliance on key personnel, reserve estimations, native title risks, cultural heritage risks, foreign currency fluctuations, and mining development, construction and commissioning risk.

## Competent Person's Statement – Mineral Resources

The information in this announcement that relates to the Star of Mangaroon Mineral Resource is based on information compiled by Mr. Shaun Searle, a Competent Person who is a Member of the Australian Institute of Geoscientists. Mr. Searle is an employee of Ashmore Advisory Pty Ltd. Mr. Searle has sufficient experience that is relevant to the style of mineralisation and type of deposit under consideration and to the activity that is being undertaken to qualify as a Competent Person as defined in the 2012 Edition of the 'Australasian Code for Reporting of Exploration Results, Minerals Resources and Ore Reserves'. Mr. Searle consents to the inclusion in the announcement of the matters based on his information in the form and context that the information appears in relation to Mineral Resource estimates.

## Competent Person's Statement – Exploration Results

The information in this announcement that relates to geology, exploration results and planning, and exploration targets was compiled by Mr. Dean Tuck, who is a Member of the AIG, Managing Director, and shareholder of the Company. Mr. Tuck has sufficient experience which is relevant to the style of mineralisation and type of deposit under consideration and to the activity being undertaken to qualify as a Competent Person as defined in the 2012 Edition of the 'Australasian Code for Reporting of Exploration Results, Mineral Resources and Ore Reserves'. Mr. Tuck consents to the inclusion in the announcement of the matters based on the information in the form and context in which it appears.

The Company confirms that it is not aware of any further new information or data that materially affects the information included in the original market announcements by Dreadnought Resources Limited referenced in this report and in the case of Mineral Resources, Production Targets, forecast financial information and Ore Reserves, that all material assumptions and technical parameters underpinning the estimates in the relevant market announcements continue to apply and have not materially changed. To the extent disclosed above, the Company confirms that the form and context in which the Competent Person's findings are presented have not been materially modified from the original market announcements.

## Resources Summary

### Star of Mangaroon – Indicated and Inferred Resources (ASX 27 November 2024)

Table 2: Resource (2g/t Au cutoff grade) - Numbers may not add up due to rounding. \*Surface reported at a 0.5g/t Au cut-off.

Type	Measured			Indicated			Inferred			Total		
	Tonnes	Au (g/t)	Au (Oz)	Tonnes	Au (g/t)	Au (Oz)	Tonnes	Au (g/t)	Au (Oz)	Tonnes	Au (g/t)	Au (Oz)
Surface*							8,300	1.0	300	8,300	1.0	300
Transition	6,300	24.9	5,100	3,300	6.5	700				9,600	18.6	5,800
Fresh	33,200	13.5	14,400	23,500	8.5	6,400	1,000	5.1	200	57,700	11.3	21,000
<b>Total</b>	<b>39,500</b>	<b>15.3</b>	<b>19,400</b>	<b>26,800</b>	<b>8.2</b>	<b>7,100</b>	<b>9,300</b>	<b>1.4</b>	<b>400</b>	<b>75,600</b>	<b>11.1</b>	<b>27,000</b>

### Metzke's Find – Indicated and Inferred Resources (ASX 27 April 2023)

Table 3: Resource (0.5g/t Au cutoff grade) - Numbers may not add up due to rounding

Type	Indicated			Inferred			Total		
	Tonnes	Au (g/t)	Au (Oz)	Tonnes	Au (g/t)	Au (Oz)	Tonnes	Au (g/t)	Au (Oz)
Transition	800	1.1	30	1,100	17.4	600	1,900	10.3	600
Fresh	44,600	7.4	10,600	21,800	5.2	3,600	66,500	6.7	14,300
<b>Total</b>	<b>45,000</b>	<b>7.3</b>	<b>10,700</b>	<b>22,900</b>	<b>5.8</b>	<b>4,200</b>	<b>68,400</b>	<b>6.8</b>	<b>14,900</b>

### Yin Ironstone Complex – Yin, Yin South, Y2, Sabre Measured, Indicated and Inferred Resources (ASX 30 November 2023)

Table 4: Summary of Yin Resources at 0.20% TREO Cut off.

Type	Measured			Indicated			Inferred			Total			
	Tonnes (Mt)	TREO (%)	TREO (kt)	Tonnes (Mt)	TREO (%)	TREO (t)	Tonnes (Mt)	TREO (%)	TREO (t)	Tonnes (Mt)	TREO (%)	TREO (t)	NdPr:TREO Ratio (%)
Oxide	2.47	1.61	39.7	13.46	1.06	142.6	1.51	0.75	11.2	17.44	1.11	193.6	29
Fresh	2.70	1.09	29.5	7.67	0.95	72.8	2.17	0.75	16.3	12.54	0.95	118.7	29
<b>Total</b>	<b>5.17</b>	<b>1.34</b>	<b>69.3</b>	<b>21.13</b>	<b>1.02</b>	<b>215.4</b>	<b>3.68</b>	<b>0.75</b>	<b>27.6</b>	<b>29.98</b>	<b>1.04</b>	<b>312.3</b>	<b>29</b>

Table 5: Summary of Yin Resources at 1.00% TREO Cut off.

Type	Measured			Indicated			Inferred			Total			
	Tonnes (Mt)	TREO (%)	TREO (kt)	Tonnes (Mt)	TREO (%)	TREO (t)	Tonnes (Mt)	TREO (%)	TREO (t)	Tonnes (Mt)	TREO (%)	TREO (t)	NdPr:TREO Ratio (%)
Oxide	1.60	2.22	35.6	5.34	1.99	106.4	0.26	1.67	4.3	7.20	2.03	146.3	30
Fresh	1.36	1.68	22.8	2.65	1.81	47.9	0.42	1.72	7.3	4.43	1.76	78.0	29
<b>Total</b>	<b>2.96</b>	<b>1.97</b>	<b>58.4</b>	<b>7.99</b>	<b>1.93</b>	<b>154.3</b>	<b>0.68</b>	<b>1.70</b>	<b>11.6</b>	<b>11.63</b>	<b>1.93</b>	<b>224.3</b>	<b>29</b>

### Gifford Creek Carbonatite – Inferred Resource (ASX 28 August 2023)

Table 6: Summary of the Gifford Creek Carbonatite Inferred Resource at various % TREO Cut offs.

Cut-Off (%TREO)	Resource (Mt)	TREO (%)	NdPr:TREO (%)	Nb2O5 (%)	P2O5 (%)	TiO2 (%)	Sc (ppm)	Contained TREO (t)	Contained Nb2O5 (t)
0.70	10.84	1.00	21	0.22	3.5	4.9	85	108,000	23,700