



QUARTERLY ACTIVITIES AND CASHFLOW REPORT

ASX RELEASE: 24 April 2026

The Board of Resource Base Limited (ASX: RBX, Resource Base or the Company) is pleased to present its quarterly activities report for the March 2026 quarter.

HIGHLIGHTS

- Resource Base was granted access to the Woomera Prohibited Area (WPA) over Exploration Licence (EL7054) by the Department of Defence
- EL7054 is located only 14km from PTR Minerals (ASX:PTR) Muckanippie heavy mineral sands project and sits directly adjacent to PTR's Artemis rare earth prospect
- Satellite spectral analysis identifies multiple priority titanium targets within EL7060, Gawler Craton
- Targets defined by coincident quartz-rich sands, titanium oxide responses and iron-bearing phases, consistent with favourable regolith environments for heavy mineral accumulation

South Australian Projects

The Company holds two highly prospective tenements; EL7054 and EL7060, in the Gawler Craton, South Australia. EL7054 is located ~100km south of Coober Pedy, within the northern Gawler Craton. The tenements cover a combined area of 27km², located approximately 14 kilometres north-east of PTR's recent discovery. In addition, the tenements are located directly adjacent to PTR's Artemis Rare Earth prospect. EL7060 encompasses a combined area of 69km², and is located 15 kilometres south of Tarcoola, within the Gawler Craton. EL7060 adjoins the only other known occurrence of an Anorthosite Complex within the Gawler Craton, other than the ground held by PTR. EL7060 is located circa seven (7) kilometres from Indiana's (ASX:IDA) Boomerang Prospect and approximately 15 kilometres south of Barton Gold's (ASX:BGD) Perseverance Prospect. The tenements are proximate to substantial surrounding deposits, being prospective for Proterozoic gold occurrences and titanium rich mineral sands.

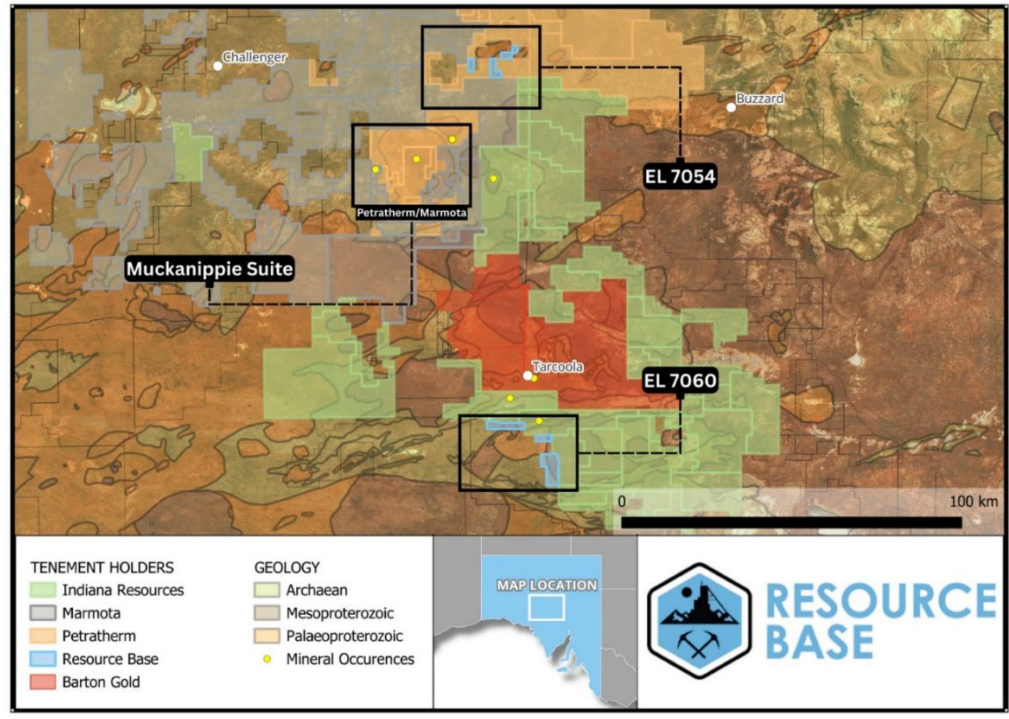


Figure 1: Tenement Locations within the Gawler Craton.

For personal use only



For personal use only

Geological Review of Historic Exploration

EL7060 covers approximately 69km² within the northern Gawler Craton, a region known for its complex Proterozoic magmatic history and association with a variety of mineral systems including intrusion-related gold, nickel sulphides and titanium-bearing heavy mineral sands.

The Company commissioned a review of historic exploration conducted by several previous explorers including Amoco Minerals Australia, CSR Ltd, Aurelius Resources and Minex Australia. The work involved the compilation of historic drilling data, geochemical results, petrology reports and regional geophysical datasets.

The review identified several geological indicators that suggest EL7060 may host titanium-bearing mafic intrusive rocks associated with anorthosite complexes.

Historic Titanium Intersections

Exploration conducted by Aurelius Resources during the early 1990s included a drilling program targeting magnetic anomalies within the region¹. Six drillholes were completed within what is now the northern portion of EL7060 including TA71 and TA99 to TA103. Geochemical assay results from this drilling program reported elevated titanium concentrations including values up to approximately 1.5% Ti with numerous intervals reporting titanium concentrations exceeding 1% Ti.

These titanium values are considered anomalous relative to background concentrations typically observed in surrounding regional lithologies and may indicate the presence of mafic intrusions and/or lithologies associated with an anorthosite complex within the EL7060 tenure.

The elevated titanium responses recorded across several drillholes suggest the potential presence of a broader titanium-enriched intrusive system.

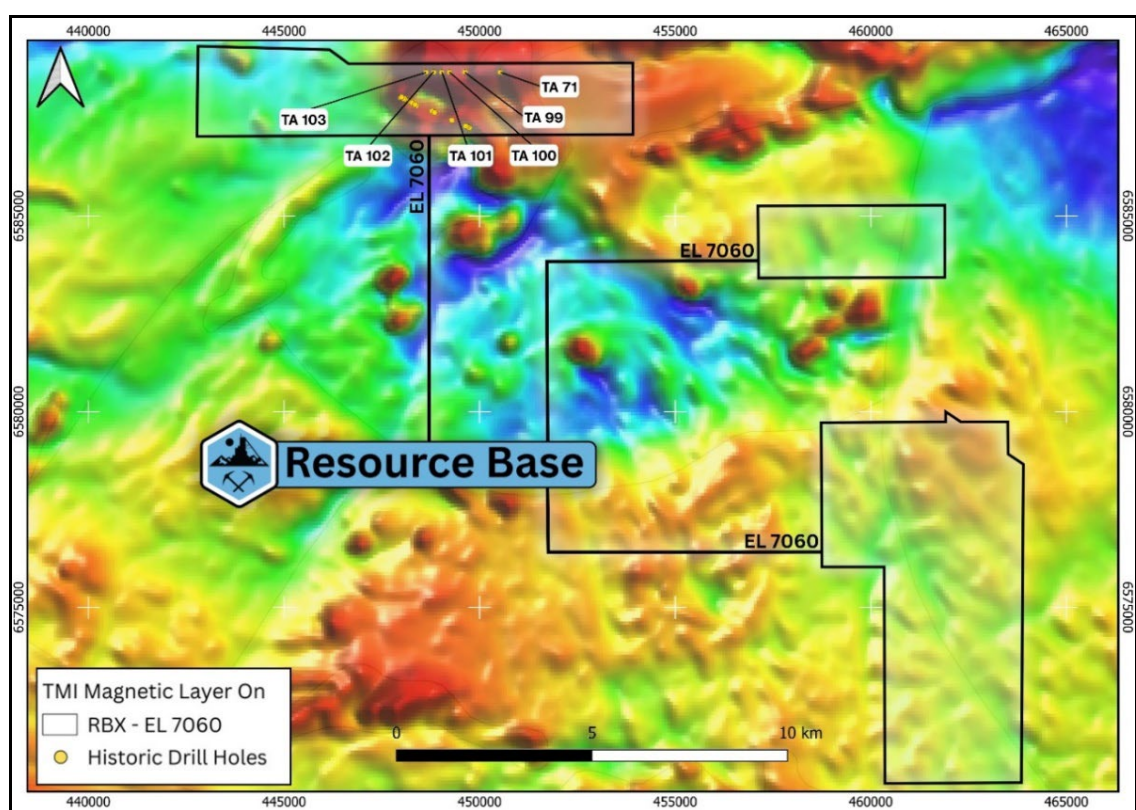


Figure 2: Tenement Location map over TMI RTP Magnetics showing the location of historic drill holes that returned anomalous Ti values in historic records.

Interpretation of Satellite Imagery (EL7060)

The Sentinel-2 dataset enables the mapping of surface material responses which can be broadly classified into regolith types including quartz-rich sands, titanium-bearing phases, iron oxides and clay-rich materials.



For personal use only

These spectral responses are interpreted to reflect variations in regolith composition and weathering processes, which in certain environments may be associated with the concentration of heavy minerals.

Of particular interest are areas where quartz-dominant sand signatures coincide with elevated titanium oxide responses and associated iron-bearing phases. These material associations are considered consistent with regolith systems developed from the weathering of mafic intrusive rocks, including anorthosite.

While the analysis does not directly identify discrete mineral species, the spatial distribution and clustering of these responses provide a basis for identifying zones that may be favourable for titanium-bearing mineral accumulation.

The spectral characteristics observed within EL7060 show similarities to those reported in regional heavy mineral sand occurrences associated with the Muckanippie Suite, including the Rosewood deposit. However, it is noted that the geological controls on these systems are still being defined, and no direct correlation or equivalence is implied.

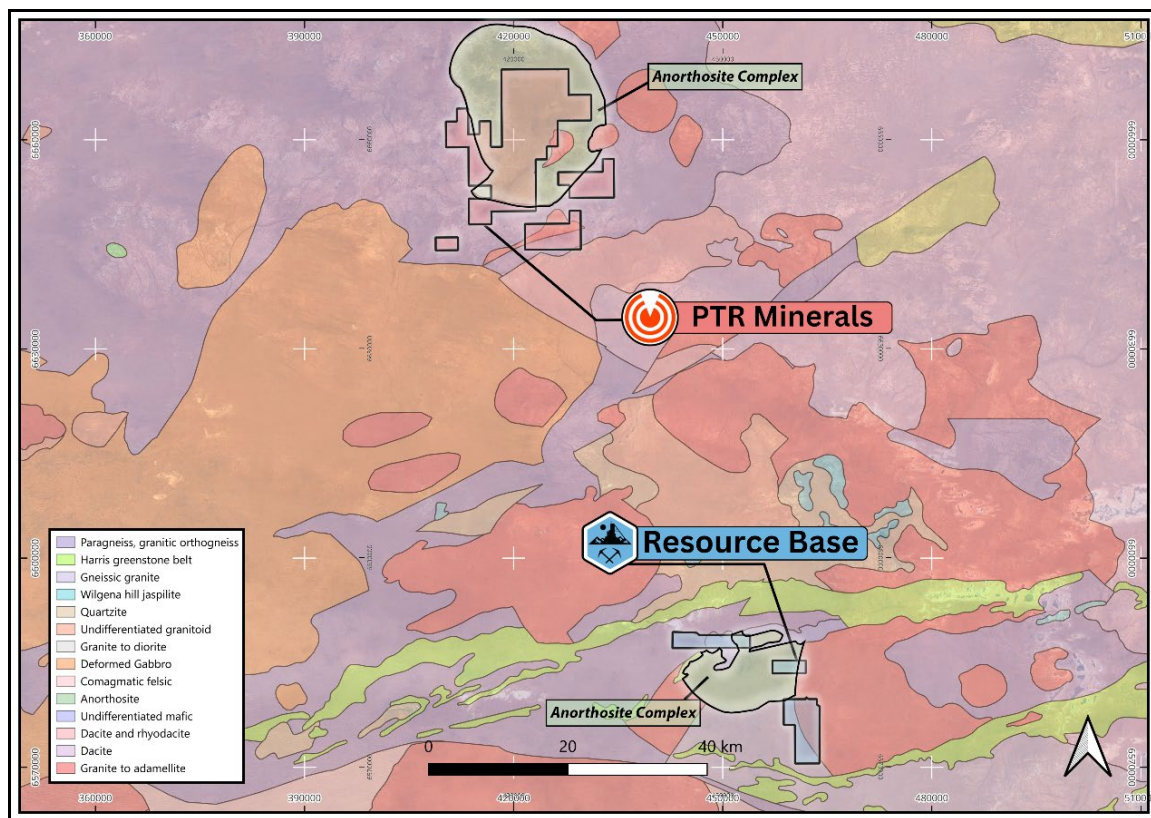


Figure 3: Showing the location of EL7060 within the Gawler Craton and illustrates the spatial relationship between PTR’s tenement holdings, the Muckanippie Anorthosite Complex and the Interpreted Anorthosite within EL7060. Regional basement geology as defined by SARIG datasets.

Mitre Hill REE Project

The Mitre Hill Project tenements are highly prospective for clay hosted Rare Earth Elements (REE) within the southern margin of the Murray Basin on the South Australia / Victoria border. Drilling results have confirmed the occurrence of shallow mineralisation across the two tenements drilled so far.

Mitre Hill hosts a JORC Inferred Mineral Resource estimate of 21 Mt @ 767 ppm TREO, which consists of thick zones of near-surface mineralisation. Significantly, the existing resource has the potential to substantially grow in size and scale as the Mineral Resource estimate only incorporates a portion of the identified Exploration Target drilled to date. The Company has also completed significant aircore drilling in Exploration Lease EL7646 located approximately six (6) km east of EL7647 however is not included in this Mineral Resource estimate.



For personal use only

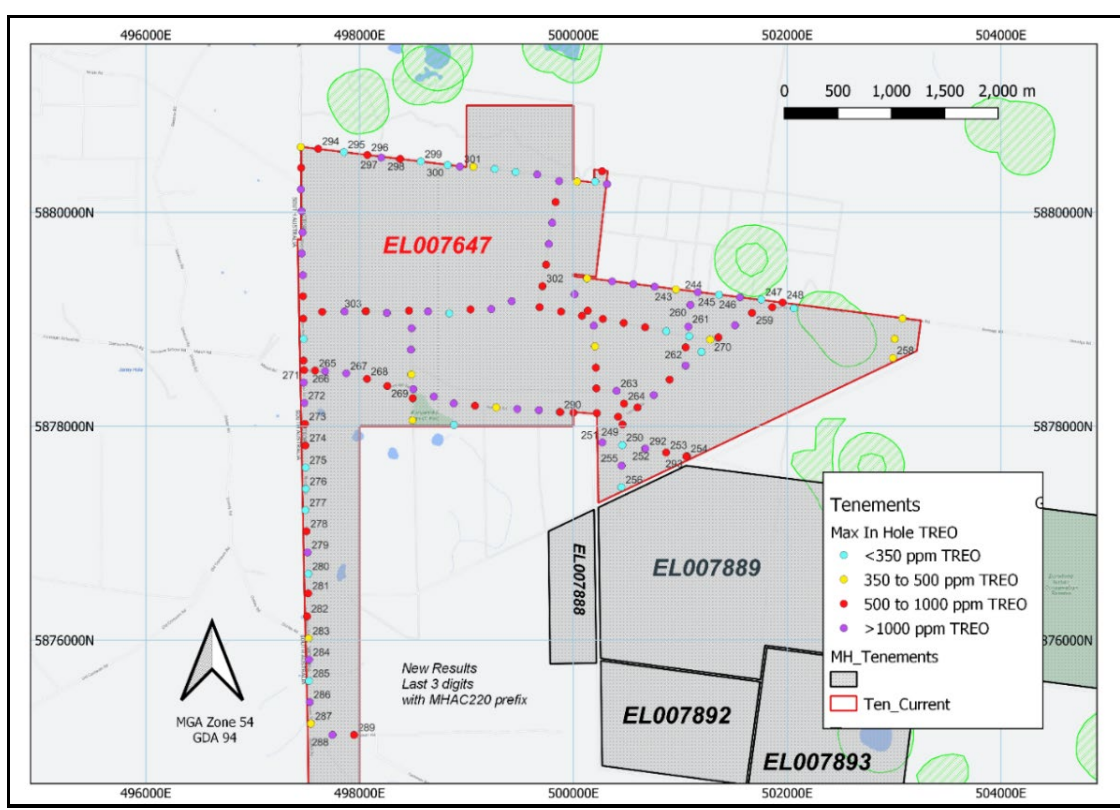


Figure 4: Plan view showing location of mineralised drill holes on EL007647, coloured by maximum TREO grade intercepted. Resource Base, 13 December 2022.

No work was undertaken at Mitre Hill during the Quarter.

James Bay Lithium Project

Ernst Lake Lithium Project

During the Quarter, the Company relinquished the Ernst Lake claim package.

New Project Opportunities

Resource Base continues to actively review and assess new project and corporate opportunities. The Company is focused on identifying assets and transactions that are strategically aligned with its critical minerals focus and that have the potential to add meaningful value to the Company’s asset base and deliver long-term value for shareholders. The Board will continue to take a disciplined and selective approach when evaluating opportunities and will update the market as appropriate.

Tenement Schedule

This section is provided in compliance with ASX Listing Rule 5.3. Please refer to Annexure 1 for a listing of tenements.

Changes in Tenements held during the Quarter:

<i>Project</i>	<i>Interest at quarter start</i>	<i>Change in quarter</i>	<i>Interest at quarter end</i>	<i>Country / Province</i>
<i>Ernst Lake (61 claims)</i>	<i>100%</i>	<i>Relinquished</i>	<i>NIL</i>	<i>Quebec, Canada</i>



Corporate & Administration

Cash Position

The Company had cash reserves as at 31 March 2026 of \$385,000.

Summary of Exploration Expenditure

In accordance with Listing Rule 5.3.1, the Company reports that there was ~\$29,000 exploration expenditure incurred during the March quarter.

Related Party Payments

In line with its obligations under ASX Listing Rule 5.3.5, the Company has advised in the Appendix 5B for the quarter ended 31 March 2026, payments to related parties of the Company totalling \$69,000 pertain to payments to Directors for fees and superannuation.

- ENDS -

This announcement has been authorised by the Board of Resource Base Limited.

For further information please visit our website – www.resourcebase.com.au



Follow @ResourceBaseLtd



Follow Resource Base Ltd (ASX:RBX)

Competent Person Statement

The Information in this report that relates to exploration results, mineral resources or ore reserves is based on information compiled by Mr Michael Beven, a director of the Company, who is a Member of the Australasian Institute of Geoscientists. Mr Beven has sufficient experience which is relevant to the style of mineralisation and type of deposits under consideration and to the activity that he is undertaking to qualify as a Competent Person as defined in the 2012 edition of the 'Australian Code for Reporting Exploration Results, Mineral Resources and Ore Reserves' (the JORC Code). Mr Beven consents to the inclusion of this information in the form and context in which it appears in this report. Mr Beven does not hold securities in the Company.

The Company first released the exploration results relating to Mitre Hill Project tenement EL007646 on 18 May 2022 and further results were released on 23 August 2022. The Company first released the exploration results relating to Mitre Hill Project tenement EL007647 on 10 October 2022, and further results were release on 24 October 2022. The Company first released the JORC mineral resource estimate on 3 February 2023. The Company first released the exploration results for the Wali Project on 11 October 2024.

The Company confirms that it is not aware of any new information or data that materially affects the information included in the above original market announcements and that all material assumptions and technical parameters underpinning the estimates in the relevant market announcement continue to apply and have not materially changed. The Company confirms that the form and context in which the Competent Person's findings are presented have not been materially modified from the original market announcements.

Annexure - Tenement Schedule as at 31 March 2026

In accordance with ASX Listing Rule 5.3.3, Resource Base Limited provides its list of exploration licenses with its March 2026 quarterly activities report.

Project	Location	Tenements Held at End of Quarter	Tenements Acquired or Disposed of During Quarter	Beneficial Interest at End of Quarter
Gawler Craton Project	South Australia, Australia	EL7054	Held	100%
Gawler Craton Project	South Australia, Australia	EL7060	Held	100%
Mitre Hill Project	Victoria, Australia	EL7646 EL7640 EL7641 EL7647 EL7888 EL7889 EL7891 EL7892 EL7893 EL7894 EL7898 and EL7900	Held	100%
Ernst Lake Project	Quebec, Canada	61 Claims 2705256 to 2705316	100%	Not Held

Appendix 5B

Mining exploration entity or oil and gas exploration entity quarterly cash flow report

Name of entity

RESOURCE BASE LTD

ABN

57 113 385 425

Quarter ended ("current quarter")

31 March 2026

Consolidated statement of cash flows	Current quarter \$A'000	Year to date (9 months) \$A'000
1. Cash flows from operating activities		
1.1 Receipts from customers		
1.2 Payments for		
(a) exploration & evaluation	(24)	(60)
(b) development	-	-
(c) production	-	-
(d) staff costs	(59)	(196)
(e) administration and corporate costs	(79)	(295)
1.3 Dividends received (see note 3)	-	-
1.4 Interest received	1	4
1.5 Interest and other costs of finance paid	-	-
1.6 Income taxes paid	-	-
1.7 Government grants and tax incentives	-	144
1.8 Other (provide details if material)	-	-
1.9 Net cash from / (used in) operating activities	(161)	(403)

2. Cash flows from investing activities		
2.1 Payments to acquire or for:		
(a) entities	-	-
(b) tenements	-	-
(c) property, plant and equipment	-	-
(d) exploration & evaluation	(5)	(5)
(e) investments	-	-
(f) other non-current assets	-	-

Mining exploration entity or oil and gas exploration entity quarterly cash flow report

Consolidated statement of cash flows		Current quarter \$A'000	Year to date (9 months) \$A'000
2.2	Proceeds from the disposal of:		
	(a) entities	-	-
	(b) tenements	-	-
	(c) property, plant and equipment	-	-
	(d) investments	-	-
	(e) other non-current assets	-	-
2.3	Cash flows from loans to other entities	-	-
2.4	Dividends received (see note 3)	-	-
2.5	Other (provide details if material)	-	-
2.6	Net cash from / (used in) investing activities	(5)	(5)
3.	Cash flows from financing activities		
3.1	Proceeds from issues of equity securities (excluding convertible debt securities)	-	-
3.2	Proceeds from issue of convertible debt securities	-	-
3.3	Proceeds from exercise of options	-	-
3.4	Transaction costs related to issues of equity securities or convertible debt securities	-	-
3.5	Proceeds from borrowings	-	-
3.6	Repayment of borrowings	-	-
3.7	Transaction costs related to loans and borrowings	-	-
3.8	Dividends paid	-	-
3.9	Other (provide details if material)	-	-
3.10	Net cash from / (used in) financing activities	-	-
4.	Net increase / (decrease) in cash and cash equivalents for the period		
4.1	Cash and cash equivalents at beginning of period	554	796
4.2	Net cash from / (used in) operating activities (item 1.9 above)	(161)	(403)
4.3	Net cash from / (used in) investing activities (item 2.6 above)	(5)	(5)
4.4	Net cash from / (used in) financing activities (item 3.10 above)	-	-

Mining exploration entity or oil and gas exploration entity quarterly cash flow report

Consolidated statement of cash flows		Current quarter \$A'000	Year to date (9 months) \$A'000
4.5	Effect of movement in exchange rates on cash held	(3)	(3)
4.6	Cash and cash equivalents at end of period	385	385

5.	Reconciliation of cash and cash equivalents at the end of the quarter (as shown in the consolidated statement of cash flows) to the related items in the accounts	Current quarter \$A'000	Previous quarter \$A'000
5.1	Bank balances	385	554
5.2	Call deposits	-	-
5.3	Bank overdrafts	-	-
5.4	Other (provide details)	-	-
5.5	Cash and cash equivalents at end of quarter (should equal item 4.6 above)	385	554

6.	Payments to related parties of the entity and their associates	Current quarter \$A'000
6.1	Aggregate amount of payments to related parties and their associates included in item 1	69
6.2	Aggregate amount of payments to related parties and their associates included in item 2	-

Note: if any amounts are shown in items 6.1 or 6.2, your quarterly activity report must include a description of, and an explanation for, such payments.

7.	Financing facilities <i>Note: the term "facility" includes all forms of financing arrangements available to the entity. Add notes as necessary for an understanding of the sources of finance available to the entity.</i>	Total facility amount at quarter end \$A'000	Amount drawn at quarter end \$A'000
7.1	Loan facilities	-	-
7.2	Credit standby arrangements	-	-
7.3	Other (please specify)	-	-
7.4	Total financing facilities	-	-
7.5	Unused financing facilities available at quarter end		-
7.6	Include in the box below a description of each facility above, including the lender, interest rate, maturity date and whether it is secured or unsecured. If any additional financing facilities have been entered into or are proposed to be entered into after quarter end, include a note providing details of those facilities as well.		

Mining exploration entity or oil and gas exploration entity quarterly cash flow report

8. Estimated cash available for future operating activities	\$A'000
8.1 Net cash from / (used in) operating activities (item 1.9)	(161)
8.2 (Payments for exploration & evaluation classified as investing activities) (item 2.1(d))	(5)
8.3 Total relevant outgoings (item 8.1 + item 8.2)	(166)
8.4 Cash and cash equivalents at quarter end (item 4.6)	385
8.5 Unused finance facilities available at quarter end (item 7.5)	-
8.6 Total available funding (item 8.4 + item 8.5)	385
8.7 Estimated quarters of funding available (item 8.6 divided by item 8.3)	2.3
<i>Note: if the entity has reported positive relevant outgoings (ie a net cash inflow) in item 8.3, answer item 8.7 as "N/A". Otherwise, a figure for the estimated quarters of funding available must be included in item 8.7.</i>	
8.8 If item 8.7 is less than 2 quarters, please provide answers to the following questions:	
8.8.1 Does the entity expect that it will continue to have the current level of net operating cash flows for the time being and, if not, why not?	
Answer: N/A	
8.8.2 Has the entity taken any steps, or does it propose to take any steps, to raise further cash to fund its operations and, if so, what are those steps and how likely does it believe that they will be successful?	
Answer: N/A	
8.8.3 Does the entity expect to be able to continue its operations and to meet its business objectives and, if so, on what basis?	
Answer: N/A	
<i>Note: where item 8.7 is less than 2 quarters, all of questions 8.8.1, 8.8.2 and 8.8.3 above must be answered.</i>	

Compliance statement

- This statement has been prepared in accordance with accounting standards and policies which comply with Listing Rule 19.11A.
- This statement gives a true and fair view of the matters disclosed.

Date:24/04/2026.....

Authorised by:Board of Directors.....
(Name of body or officer authorising release – see note 4)

Notes

- This quarterly cash flow report and the accompanying activity report provide a basis for informing the market about the entity's activities for the past quarter, how they have been financed and the effect this has had on its cash position. An

Mining exploration entity or oil and gas exploration entity quarterly cash flow report

entity that wishes to disclose additional information over and above the minimum required under the Listing Rules is encouraged to do so.

2. If this quarterly cash flow report has been prepared in accordance with Australian Accounting Standards, the definitions in, and provisions of, *AASB 6: Exploration for and Evaluation of Mineral Resources* and *AASB 107: Statement of Cash Flows* apply to this report. If this quarterly cash flow report has been prepared in accordance with other accounting standards agreed by ASX pursuant to Listing Rule 19.11A, the corresponding equivalent standards apply to this report.
3. Dividends received may be classified either as cash flows from operating activities or cash flows from investing activities, depending on the accounting policy of the entity.
4. If this report has been authorised for release to the market by your board of directors, you can insert here: "By the board". If it has been authorised for release to the market by a committee of your board of directors, you can insert here: "By the [name of board committee – eg Audit and Risk Committee]". If it has been authorised for release to the market by a disclosure committee, you can insert here: "By the Disclosure Committee".
5. If this report has been authorised for release to the market by your board of directors and you wish to hold yourself out as complying with recommendation 4.2 of the ASX Corporate Governance Council's *Corporate Governance Principles and Recommendations*, the board should have received a declaration from its CEO and CFO that, in their opinion, the financial records of the entity have been properly maintained, that this report complies with the appropriate accounting standards and gives a true and fair view of the cash flows of the entity, and that their opinion has been formed on the basis of a sound system of risk management and internal control which is operating effectively.