

ASX Announcement 28 April 2026

Bonanza Gold Grades Confirmed across 5km Niagara Trend, Pit Optimisation Advancing

Highlights

- **RC infill drilling returns exceptionally** high-grade gold from all five Niagara prospects (Orion, Sapphire, Eclipse, Justice, Euroa), confirming a coherent, multi-target gold system across 5km Niagara trend.
- **2026 MMS RC program demonstrated a materially larger and higher-grade** system than previously understood.
- **Multiple high-grade intercepts results including:**
 - **8m @ 66.76g/t Au** from 101m **including 1m @ 130.00g/t Au** from 101m and **1m @ 363.70g/t Au** from 102m in hole 26SPRC014 (Sapphire)
 - **2m @ 20.18g/t Au** from 85m **including 1m @ 33.00g/t Au** from 86m in hole 26SPRC016 (Sapphire)
 - **3m @ 52.58g/t Au** from 111m **including 1m @ 145.00g/t Au** from 112m in hole 26ORRC009 (Orion)
 - **2m @ 47.92g/t Au** from 42m **including 1m @ 90.20g/t Au** from 42m in hole 26JURC006 (Justice)
 - **4m @ 9.43g/t Au** from 46m **including 1m @ 21.40g/t Au** from 46m in hole 26ECRC004 (Eclipse)
- **85-hole, 5,748m program funded** through the MMS Equity for Drilling Services Agreement.

GoldArc Resources Limited (ASX:GA8) ('GoldArc' or 'the Company') is pleased to report high-grade gold assay results from its recently completed Reverse Circulation (RC) drilling program at the Niagara Gold Deposits, within the Company's Leonora South Gold Project. The 85-hole, 5,748m program, 100% funded through the Equity for Drilling Services Agreement with Mineral Mining Services Pty Ltd ('MMS') has returned bonanza-grade intercepts across five prospects, potentially identifying Niagara as a high-grade, multi-deposit production hub.

The Niagara deposits were previously mined as shallow open-pit operations in the early 1990s at US\$300-400/oz. At that time, open-cut mining focused on accessible near-surface ore. These results materially expand the scale and economic case for the Niagara system.

GoldArc Resources Managing Director, Paul Stephen commented: "The result from hole 26SPRC014 – 8 metres at 66.76 grams per tonne, including a 1-metre interval at 363.70 grams per tonne – is the kind of intercept that stops you in your tracks. What excites me most is that this is not a single-deposit story: we are seeing bonanza grades from five separate deposits across a 5-kilometre trend. That is a potential multi-deposit production hub – and with MMS

ASX:GA8

GoldArc Resources

goldarcres.com.au

104 Colin Street
West Perth WA 6005

+618 9420 8208





ASX:GA8

GoldArc Resources

goldarcres.com.au

104 Colin Street
West Perth WA 6005

+61 8 9420 8208



“funding 100% of the development pathway, we can move directly from these results into an updated pit optimisation and mine design. Niagara was last mined at \$300 an ounce. At today’s gold price, the scale of the opportunity here is potentially significant.”

Niagara Gold Deposit RC Drilling Results Verify Exceptionally High-Grade Gold System

Niagara Gold Deposits comprising Orion, Sapphire, Eclipse, Euroa and Justice, are situated within GoldArc’s Leonora South Gold Project, in the historic Kookynie Goldfields approximately 60km south of Leonora. The Niagara system hosts a combined JORC-compliant MRE of 48,000oz @ 2.2g/t Au (announced 28 May 2024) at the Orion and Sapphire deposits. Prior to GoldArc’s ongoing exploration activities, the deposits had not been systematically drilled to depth and along trend at scale.

The same gold-bearing structure that hosts Orion and Sapphire systems (quartz veining within the Niagara Gabbro Complex) controls mineralisation along approximately **5km-long Niagara trend** (workings). This provides a clear geological analogue and a compelling case for resource consolidation across the Leonora South hub.

The MMS-funded program, comprising 5,748m across 85 RC holes at Niagara Gold Deposits, was designed to advance resource definition and optimisation at the current high gold price. The program returned numerous high-grade intercepts across the five deposits over 5km, demonstrating the depth and lateral scale of the system (Figure 1). See Table 1 for a list of significant intercepts.

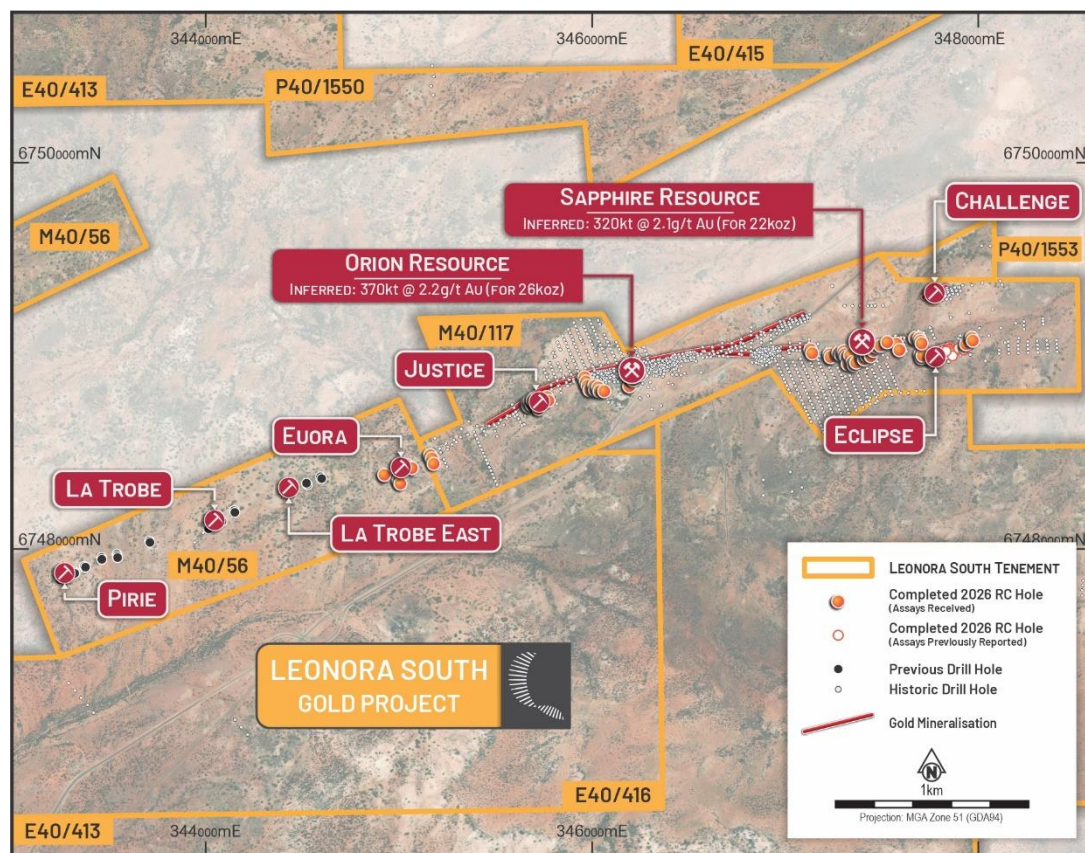


Figure 1 – Drill Collars at Kookynie Project (Niagara Trend)

Gold mineralisation is consistently associated with quartz veining and shear zones hosted within a deep weathering profile. Drilling successfully intersected the targeted mafic lithologies, interpreted as the Niagara Layered Complex (dolerite and gabbro), with intermittent muscovite-granitic dykes. This geological consistency across 5km provides strong confidence in the continuity of the system along trend and underpins the case for an integrated multi-deposit production hub.

The results from the remaining 72 RC holes have been received (see Table 1).

High-Grade Results Across Five Deposits Confirm Multi-Prospect Hub across 5km

High-grade mineralisation was returned from all five deposits tested in the program, confirming a continuous, coherent gold system across a 5km trend. This multi-deposit scale provides the geological footprint and grade inventory to support a potential hub-scale mining operation. Key intercepts by deposit are detailed below.

Sapphire Deposit

Hole 26SPRC014, intercepted phenomenal high-grade interval of **8m @ 66.76g/t Au** from 101m including **1m @ 363.70g/t Au** from 102m and **1m @ 130.00g/t Au** from 101m. The hole was drilled under the western side of the Sapphire pit and sits just 31m from historical hole RC637, which returned **7m @ 142.83g/t Au** from 135m including **1m @ 979.00g/t Au** from 136m¹. See Figure 2. These bonanza grades could open up depth and strike extensions beyond the existing 21,605oz @ 2.1g/t Inferred Mineral Resource.

The continuity of high-grade mineralisation between these two holes suggests a high-grade shoot of meaningful scale that warrants immediate follow-up. GoldArc is planning more diamond and RC holes around these high-grade intercepts in order to outline their size.

Key intercepts include:

- **8m @ 66.76g/t Au** including **1m @ 363.70g/t Au** and **1m @ 130.00g/t Au** from 101m (26SPRC014)
- **8m @ 6.28g/t Au** from 66m including **1m @ 16.70g/t Au** from 68m and **1m @ 13.50g/t Au** from 70m (26SPRC017)
- **2m @ 20.18g/t Au** from 85m including **1m @ 33.00g/t Au** from 86m (26SPRC016)
- **11m @ 3.91g/t Au** from 62m (26SPRC018)
- **9m @ 2.32g/t Au** from 74m (26SPRC019)
- **7m @ 4.09g/t Au** from 25m including **1m @ 12.20g/t Au** from 29m (26SPRC005)

ASX:GA8

GoldArc Resources

goldarcres.com.au

104 Colin Street
West Perth WA 6005

+61 8 9420 8208

¹ Refer to WAMEXa44566 report from WAMEX Department of Energy, Mines, Industry Regulation and Safety for the historical holes data (including RC637).



GoldArc

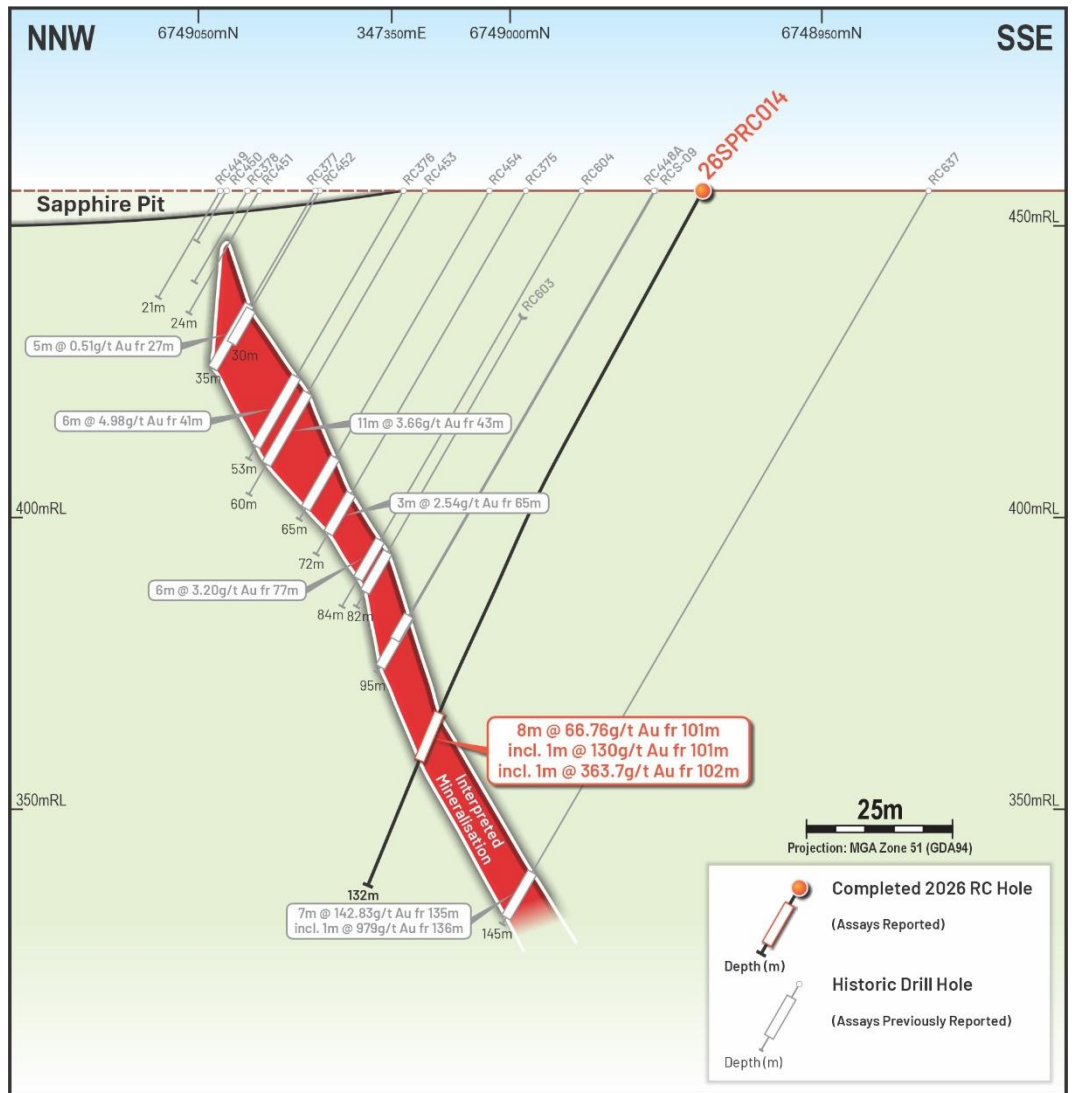


Figure 2 - 26SPRC014-RC637 Cross Section Showing Bonanza Zone, Sapphire

Refer to WAMExa44566 report from WAMEx Department of Energy, Mines, Industry Regulation and Safety for the historical holes data (including RC637).

ASX:GA8

GoldArc Resources

goldarcres.com.au

104 Colin Street
West Perth WA 6005

+618 9420 8208



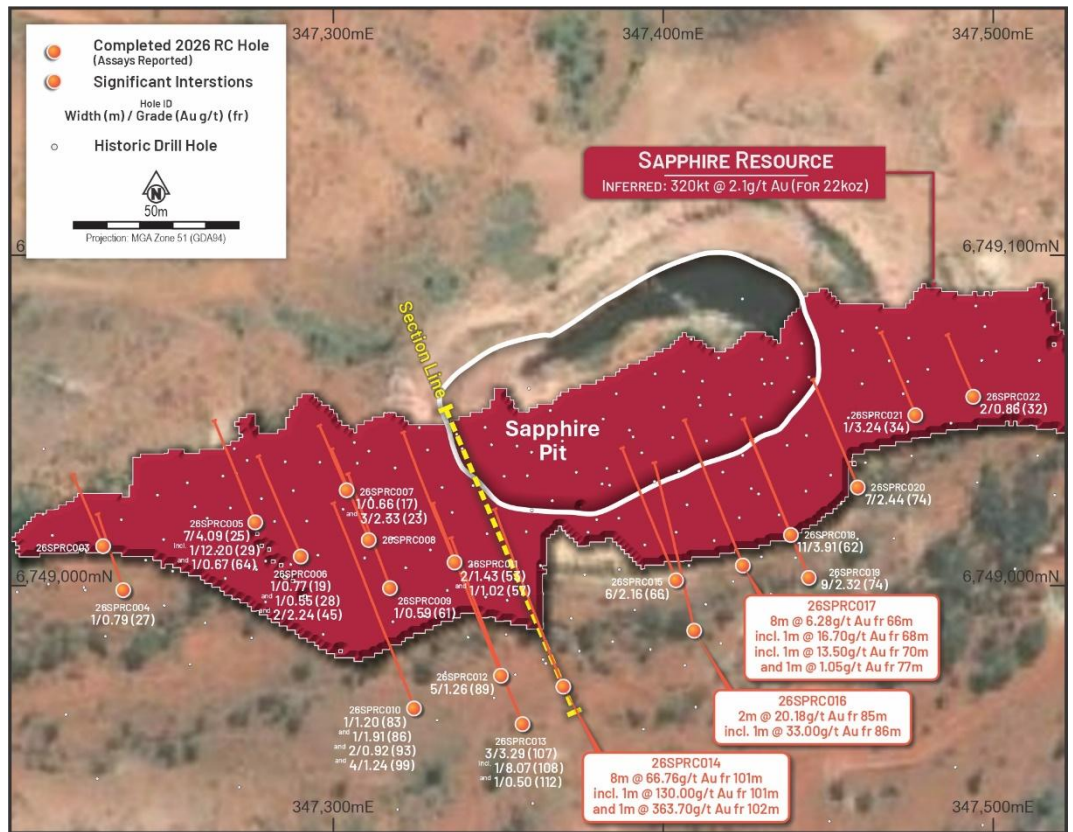


Figure 3 – Sapphire Pit and Drill-hole Location Plan

Orion Deposit

Drilling results have confirmed grade continuity at depth on the western edge of the Orion pit, within the same quartz-vein structural corridor that hosts Sapphire (see Figure 4 & 5).

This opens up depth extensions beyond the existing 26,409oz @ 2.2g/t Inferred Mineral Resource, supporting an expanded resource estimate.

Key intercepts include:

- **3m @ 52.58g/t Au** from 111m including **1m @ 145.00g/t Au** from 112m (26ORRC009)
- **2m @ 7.76g/t Au** from 105m including **1m @ 14.40g/t Au** from 105m (26ORRC008)
- **4m @ 3.95g/t Au** from 65m (26ORRC012)
- **2m @ 4.37g/t Au** from 64m (26ORRC014)

ASX:GA8

GoldArc Resources

goldarcres.com.au

104 Colin Street
West Perth WA 6005

+61 8 9420 8208



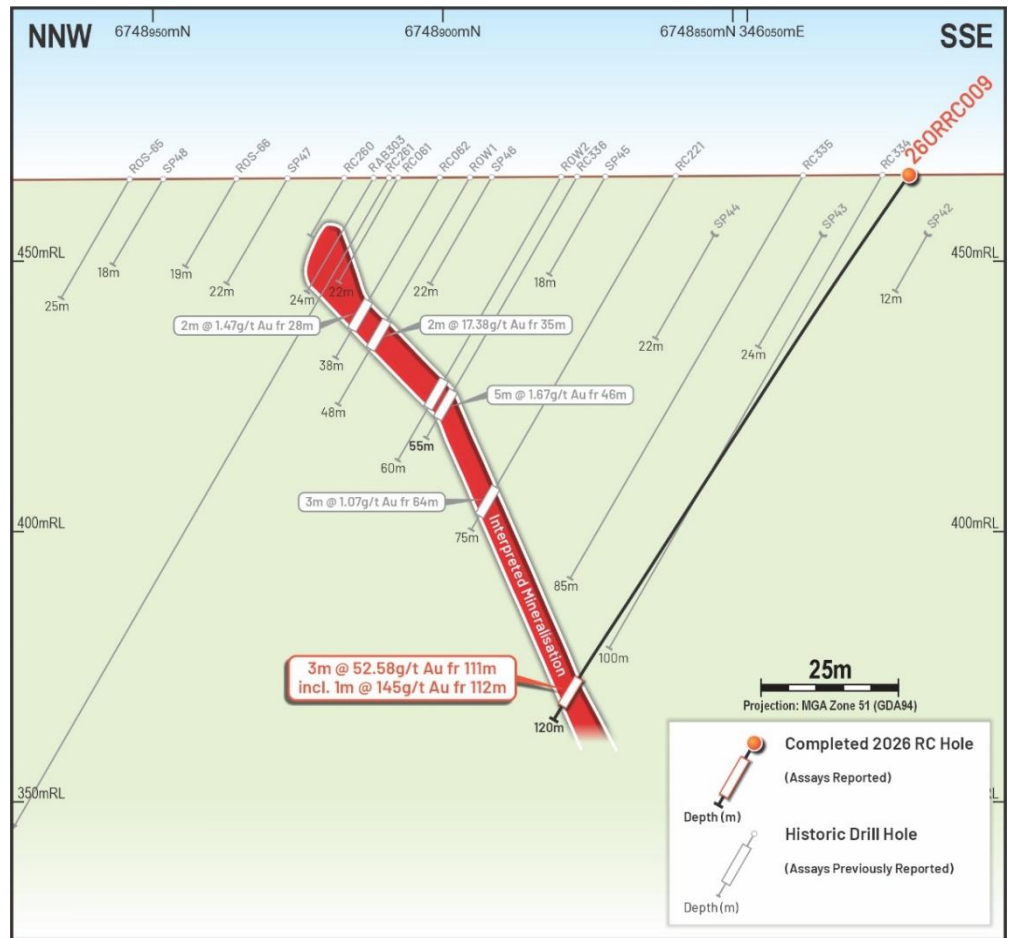


Figure 4 - 26ORRC009 Cross Section, Orion

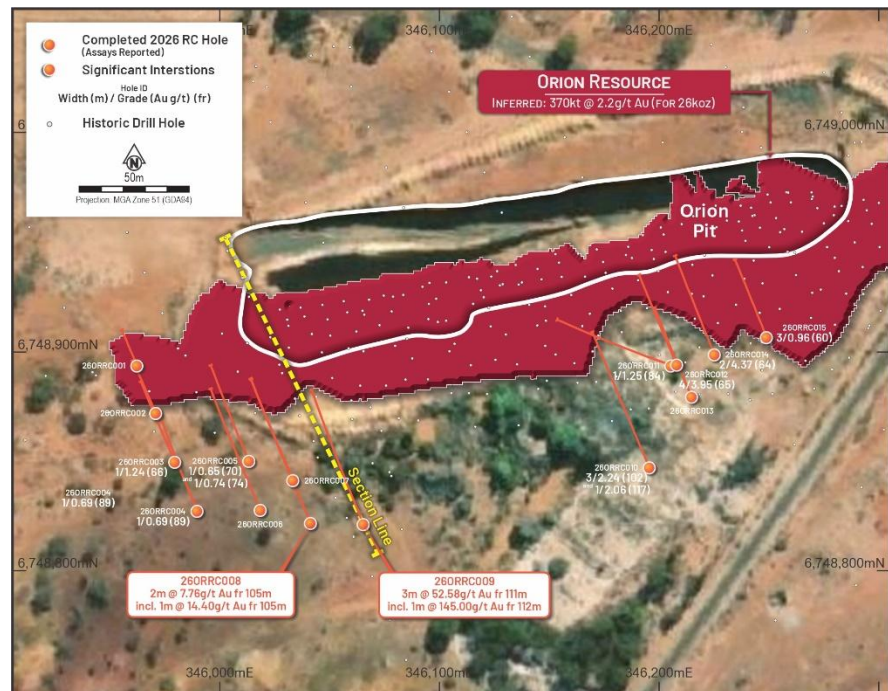


Figure 5 - Orion Pit and Drill-hole Location Plan

ASX:GA8

GoldArc Resources

goldarcres.com.au

104 Colin Street
West Perth WA 6005

+618 9420 8208



Justice Prospect

Located ~300m west-southwest of Orion, Justice extends the high-grade mineralised footprint along the Niagara trend beyond the current resource area (see Figure 6 & 7).

The bonanza-grade result confirms the structural system is continuous and open along trend – directly supporting the case for a hub-scale, multi-deposit production scenario.

Key intercepts include:

- **2m @ 47.92g/t Au** including **1m @ 90.20g/t Au** from 42m (26JURC006)
- **2m @ 2.50g/t Au** from 41m (26JURC004)

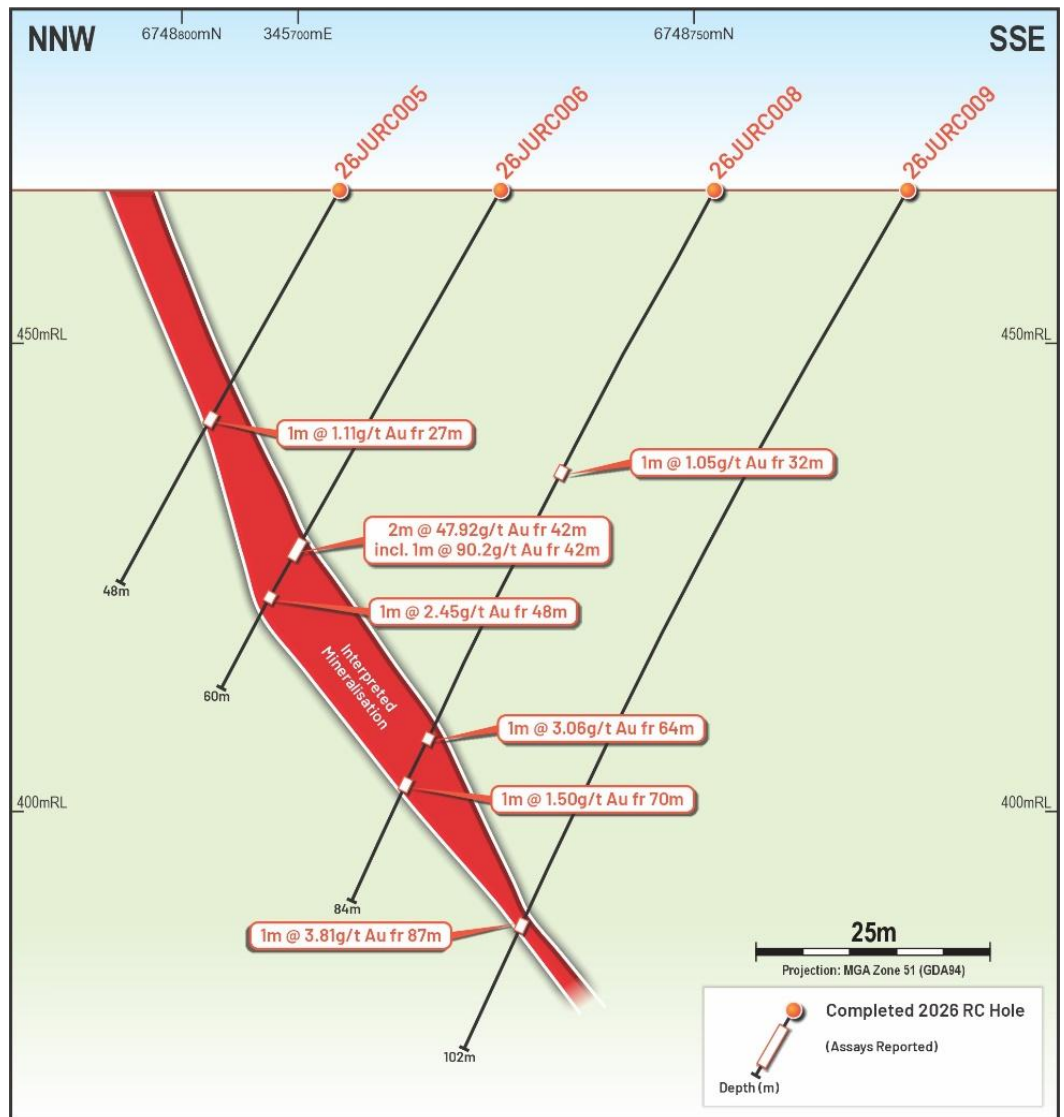


Figure 6 – 26JURC005-009 Cross Section, Justice

ASX:GA8

GoldArc Resources

goldarcres.com.au

104 Colin Street
West Perth WA 6005

+61 8 9420 8208



Figure 7 - Justice Prospect and Drill-hole Location Plan

Euroa Prospect

Euroa is located approximately 3km west-southwest of Eclipse. There is another 2km of sparsely tested line of workings (Pirie-La Trobe-Latrobe East; see Figure 1). Early-stage results demonstrate the full lateral extent of the system, underpinning Niagara's identity as potentially a coherent, hub-scale gold opportunity rather than a series of isolated deposits (see Figure 8 & 9).

Key intercepts include:

- **1m @ 8.84g/t Au** from 56m (26EURC003)
- **4m @ 2.49g/t Au** from 41m (26EURC007)

ASX:GA8

GoldArc Resources

goldarcres.com.au

104 Colin Street
West Perth WA 6005

+61 8 9420 8208



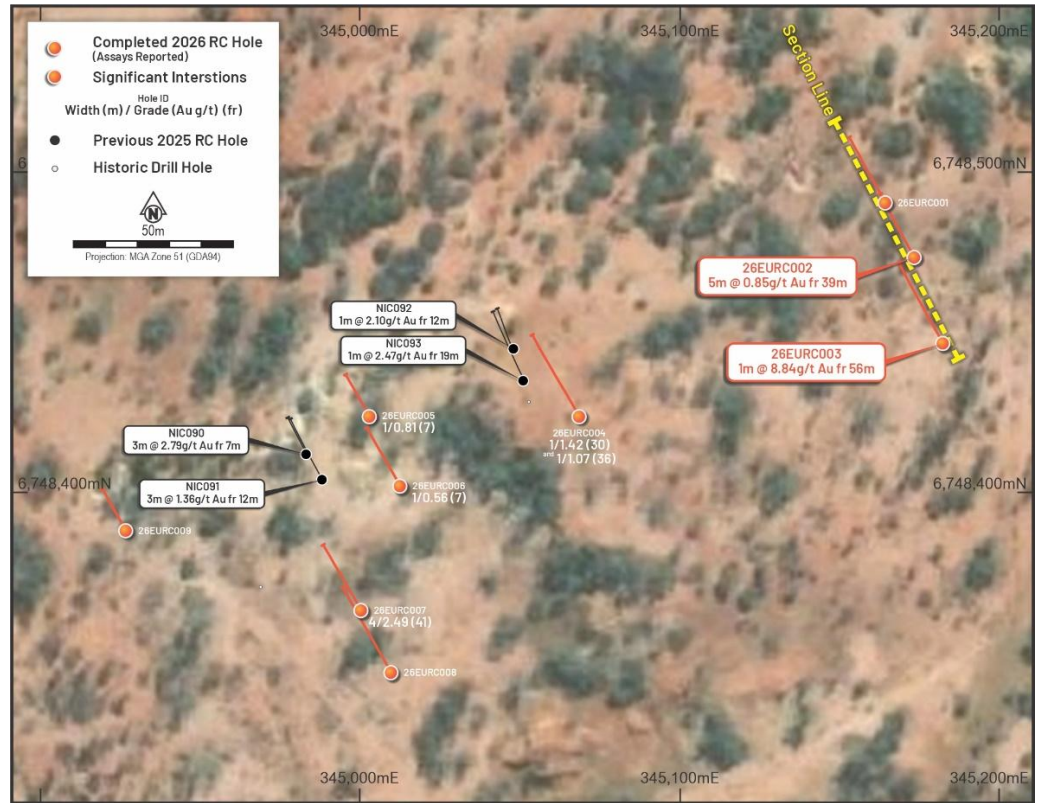


Figure 8 - Euroa Prospect and Drill-hole Location Plan

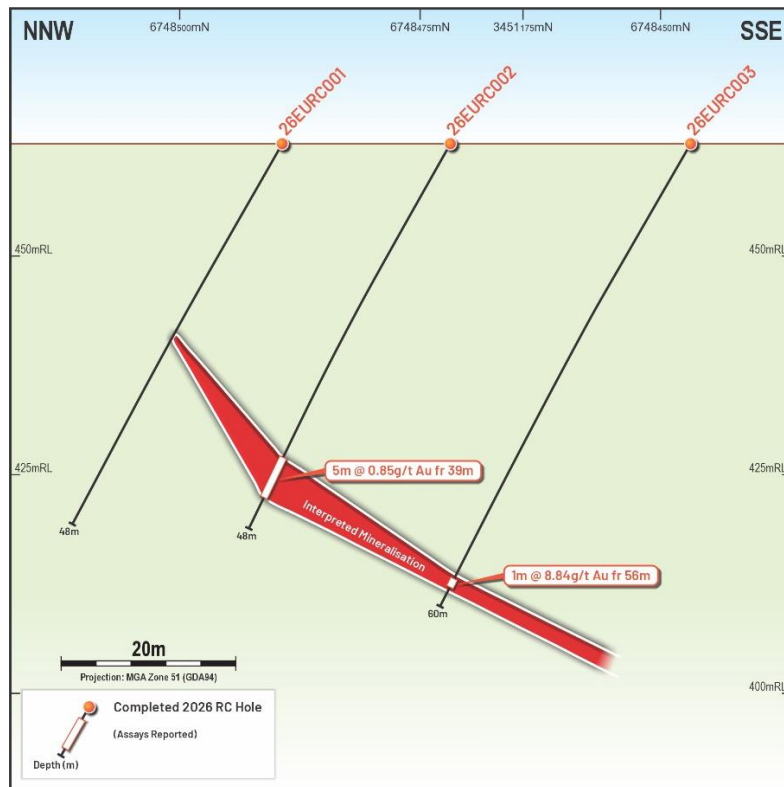


Figure 9 - 26EURC001-003 Cross Section, Euroa

ASX:GA8

GoldArc Resources

goldarcres.com.au

104 Colin Street
West Perth WA 6005

+61 8 9420 8208

Eclipse

On 7 April 2026, GoldArc announced high grade intercepts from 13 RC holes at Eclipse, confirming that Eclipse adds a near-surface, potentially open-pittable component to the Niagara hub, increasing the range of potential mining scenarios.

These results further reinforce the near-surface profile of Eclipse with broad, high-grade mineralisation consistent with open-pit development potential (see Figure 10 & 11).

Key intercepts include:

- **1m @ 6.42g/t Au** from 52m (26ECRC017)
- Previously announced 7 April 2026
 - **4m @ 9.43g/t Au** including **1m @ 21.40g/t Au** from 46m (26ECR004)
 - **7m @ 3.20g/t Au** from 33m (26ECRC003)
 - **8m @ 1.83g/t Au** from 12m (26ECRC001)

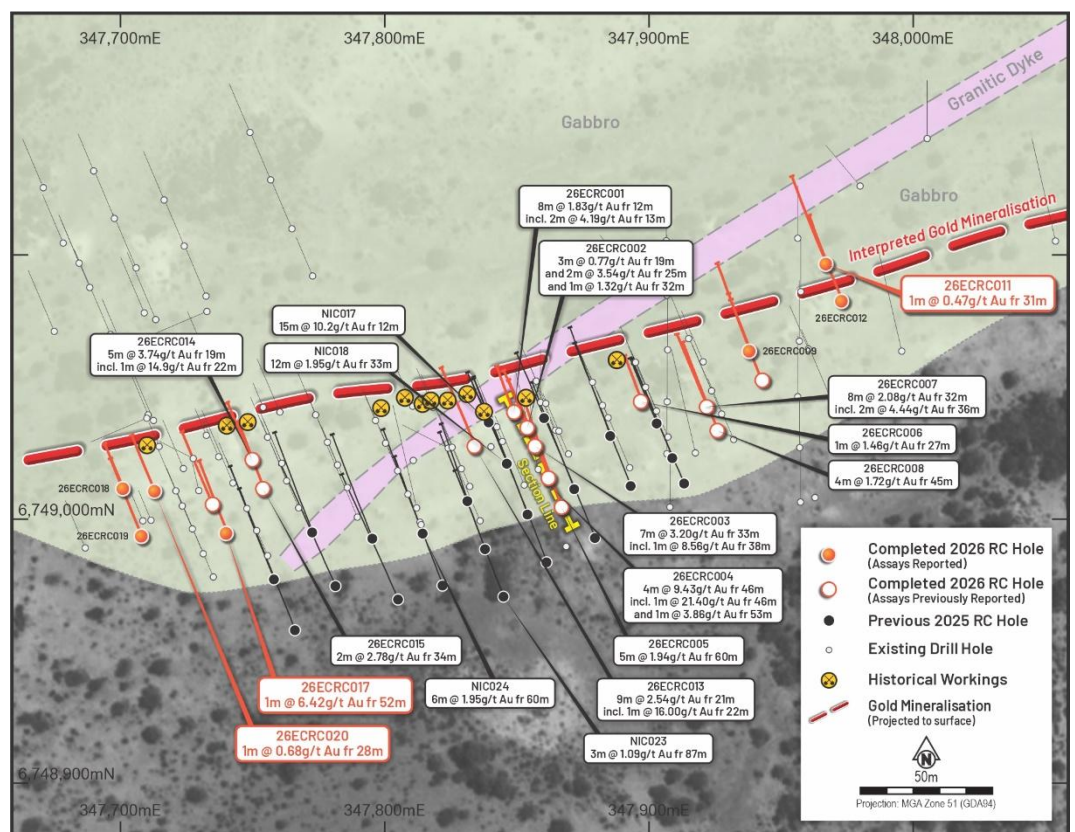


Figure 10 – Eclipse Prospect and Drill-hole Location Plan

ASX:GA8

GoldArc Resources

goldarcres.com.au

104 Colin Street
West Perth WA 6005

+61 8 9420 8208



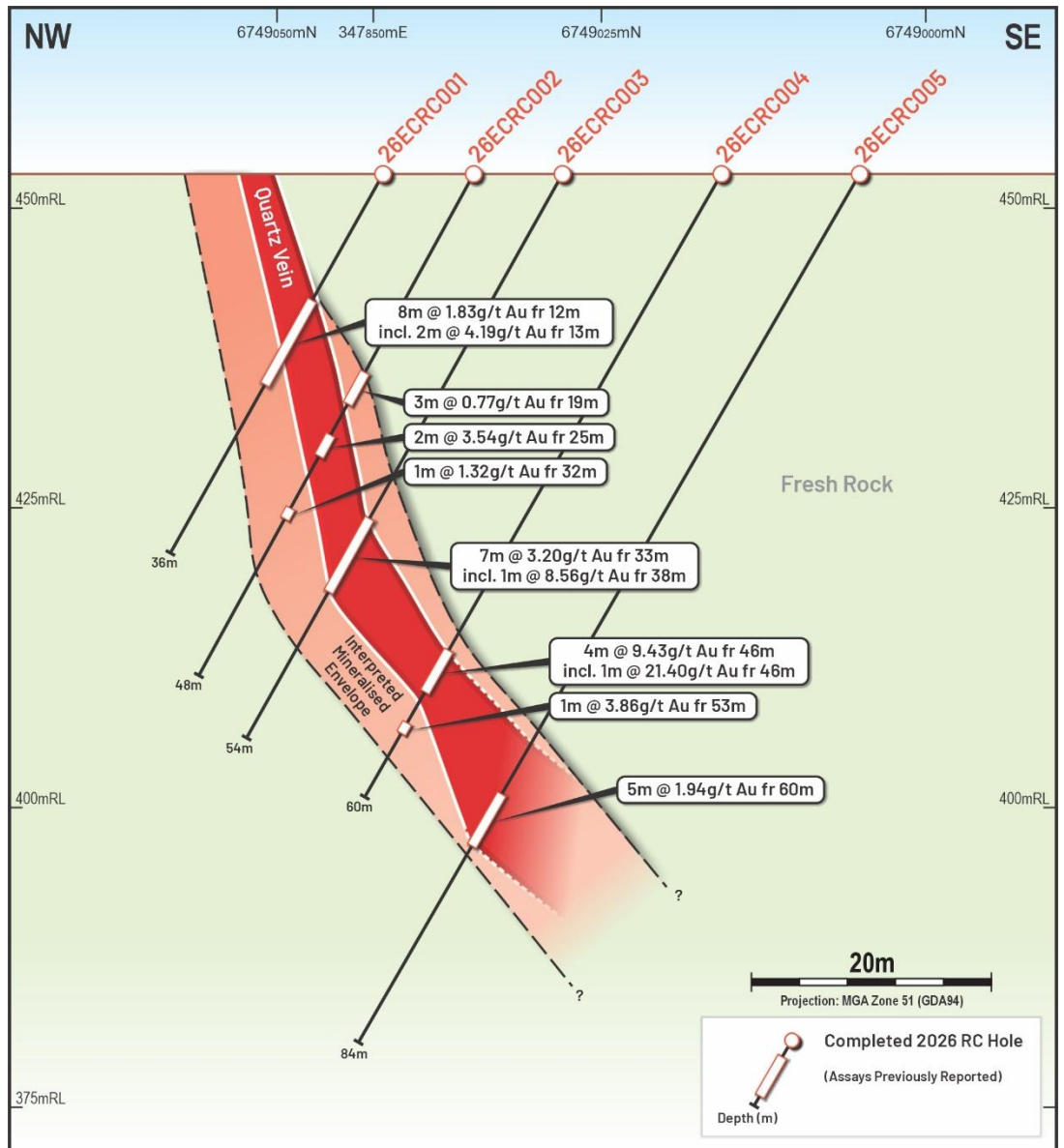


Figure 11 – 26ECRC001–005 Cross Section, Eclipse, announced on 7 April 2026

Next Steps

- Complete initial pit optimisations and preliminary mine schedule at Niagara to assess mining scenarios at the current gold price, a direct precursor to a mining decision.
- Progress planned diamond and RC follow-up drilling at the Sapphire bonanza zone (26SPRC014 / RC637 high-grade corridor) to define the geometry and extent of the high-grade shoot.

This announcement has been authorised for release by the Board of Directors.

- ENDS -

ASX:GA8

GoldArc Resources

goldarcres.com.au

104 Colin Street
West Perth WA 6005

+618 9420 8208





Investors

Paul Stephen

Managing Director

GoldArc Resources Limited

info@goldarcres.com.au

Investor Relations

Madeline Howson

Investor Relations

Discovir Investor Relations

madeline@discovir.com.au

Forward Looking Statements Disclaimer

This announcement contains certain “forward-looking statements” and comments about future matters. Forward-looking statements can generally be identified by the use of forward-looking words such as, “expect”, “anticipate”, “likely”, “intend”, “should”, “estimate”, “target”, “outlook”, and other similar expressions and include, but are not limited to, indications of, and guidance or outlook on, future events, growth opportunities, exploration activities or the financial position or performance of the Company. You are cautioned not to place undue reliance on forward-looking statements. Any such statements, opinions and estimates in this release speak only as of the date hereof, are preliminary views and are based on assumptions and contingencies subject to change without notice. Forward-looking statements are provided as a general guide only. There can be no assurance that actual outcomes will not differ materially from these forward-looking statements. Any such forward-looking statement also inherently involves known and unknown risks, uncertainties and other factors and may involve significant elements of subjective judgement and assumptions that may cause actual results, performance and achievements to differ. Except as required by law the Company undertakes no obligation to finalise, check, supplement, revise or update forward-looking statements in the future, regardless of whether new information, future events or results or other factors affect the information contained in this announcement.

Competent Persons Statements

The information in this report as it relates to exploration results and geology is based on, and fairly represents, information and supporting documentation that was compiled by Mr. Ziggy Lubieniecki, who is a director, employee and shareholder of the Company. Mr. Lubieniecki has sufficient experience which is relevant to the styles of mineralisation and types of deposit under consideration and to the activities which he is undertaking to qualify as a Competent Person as defined in the 2012 Edition of the Australasian Code for Reporting of Exploration Results, Mineral Resources and Ore Reserves'. Mr. Lubieniecki consents to the inclusion in the report of the matters based on the information in the form and context in which it appears.

The information in this announcement that relates to the Orion-Sapphire Mineral Resources is contained in the ASX announcement released on 28 May 2024. The information in this announcement that relates to the gold Mineral Resources for the Mt Stirling Project is contained in the ASX announcements released on 25 February 2019, 29 January 2020 and 5 September 2022. The Company confirms that it is not aware of any new information or data that materially affects the information in the relevant market announcements, and that all material assumptions and technical parameters underpinning the estimates in the relevant announcement continue to apply and have not materially changed. that the Company confirms that the form and context in which the Competent Persons findings are presented have not been materially modified from the original announcements.

ASX:GA8

GoldArc Resources

goldarcres.com.au

104 Colin Street
West Perth WA 6005

+61 8 9420 8208



Table 1 – Significant RC Intercepts

Prospect	Intercepts
Eclipse	1m @ 0.47g/t Au from 31m in hole 26ECRC011
Eclipse	1m @ 6.42g/t Au from 52m in hole 26ECRC017
Eclipse	1m @ 0.68g/t Au from 28m in hole 26ECRC020
Euroa	5m @ 0.85g/t Au from 39m in hole 26EURC002
Euroa	1m @ 8.84g/t Au from 56m in hole 26EURC003
Euroa	1m @ 1.42g/t Au from 30m in hole 26EURC004
Euroa	1m @ 1.07g/t Au from 36m in hole 26EURC004
Euroa	1m @ 0.81g/t Au from 7m in hole 26EURC005
Euroa	1m @ 0.56g/t Au from 7m in hole 26EURC006
Euroa	4m @ 2.49g/t Au from 41m in hole 26EURC007
Justice	1m @ 0.75g/t Au from 22m in hole 26JURC001
Justice	2m @ 2.02g/t Au from 24m in hole 26JURC001
Justice	1m @ 2.42g/t Au from 31m in hole 26JURC001
Justice	4m @ 1.92g/t Au from 40m in hole 26JURC002
Justice	1m @ 0.76g/t Au from 20m in hole 26JURC003
Justice	1m @ 1.36g/t Au from 27m in hole 26JURC003
Justice	2m @ 2.50g/t Au from 41m in hole 26JURC004
Justice	1m @ 1.11g/t Au from 27m in hole 26JURC005
Justice	2m @ 47.92g/t Au from 42m in hole 26JURC006 including 1m @ 90.20g/t Au from 42m
Justice	1m @ 2.45g/t Au from 48m in hole 26JURC006
Justice	1m @ 1.05g/t Au from 32m in hole 26JURC008
Justice	1m @ 3.06g/t Au from 64m in hole 26JURC008
Justice	1m @ 1.60g/t Au from 70m in hole 26JURC008
Justice	1m @ 3.81g/t Au from 87m in hole 26JURC009
Justice	1m @ 0.98g/t Au from 63m in hole 26JURC010
Justice	6m @ 0.93g/t Au from 55m in hole 26JURC011
Orion	1m @ 1.24g/t Au from 66m in hole 26ORRC003
Orion	1m @ 0.69g/t Au from 89m in hole 26ORRC004
Orion	1m @ 0.65 g/t Au from 70m in hole 26ORRC005
Orion	1m @ 0.74g/t Au from 74m in hole 26ORRC005
Orion	2m @ 7.76g/t Au from 105m in hole 26ORRC008 including 1m @ 14.40g/t Au from 105m
Orion	3m @ 52.58g/t Au from 111m in hole 26ORRC009 including 1m @ 145.00g/t Au from 112m
Orion	3m @ 2.24g/t Au from 102m in hole 26ORRC010
Orion	1m @ 2.06g/t Au from 117m in hole 26ORRC010
Orion	1m @ 1.25g/t Au from 84m in hole 26ORRC011
Orion	4m @ 3.95g/t Au from 65m in hole 26ORRC012
Orion	2m @ 4.37g/t Au from 64m in hole 26ORRC014
Orion	3m @ 0.96g/t Au from 60m in hole 26ORRC015
Sapphire	6m @ 1.31g/t Au from 33m in hole 26SPRC001
Sapphire	1m @ 0.79g/t Au from 27m in hole 26SPRC004
Sapphire	7m @ 4.09g/t Au from 25m in hole 26SPRC005 including 1m @ 12.20g/t Au from 29m
Sapphire	1m @ 0.67g/t Au from 64m in hole 26SPRC005
Sapphire	1m @ 0.77g/t Au from 19m in hole 26SPRC006
Sapphire	1m @ 0.55g/t Au from 28m in hole 26SPRC006
Sapphire	2m @ 2.24g/t Au from 45m in hole 26SPRC006
Sapphire	1m @ 0.66g/t Au from 17m in hole 26SPRC007
Sapphire	3m @ 2.33g/t Au from 23m in hole 26SPRC007
Sapphire	1m @ 0.59g/t Au from 61m in hole 26SPRC009
Sapphire	1m @ 1.20g/t Au from 83m in hole 26SPRC010
Sapphire	1m @ 1.91g/t Au from 86m in hole 26SPRC010
Sapphire	2m @ 0.92g/t Au from 93m in hole 26SPRC010
Sapphire	4m @ 1.24g/t Au from 99m in hole 26SPRC010
Sapphire	2m @ 1.43g/t Au from 53m in hole 26SPRC011
Sapphire	1m @ 1.02g/t Au from 57m in hole 26SPRC011
Sapphire	5m @ 1.26g/t Au from 89m in hole 26SPRC012
Sapphire	3m @ 3.29g/t Au from 107m in hole 26SPRC013 including 1m @ 8.07g/t Au from 108m
Sapphire	1m @ 0.50g/t Au from 112m in hole 26SPRC013
Sapphire	8m @ 66.76g/t Au from 101m in hole 26SPRC014 including 1m @ 130.00g/t Au from 101m and 1m @ 363.70g/t Au from 102m
Sapphire	6m @ 2.16g/t Au from 66m in hole 26SPRC015
Sapphire	2m @ 20.18g/t Au from 85m in hole 26SPRC016 including 1m @ 33.00g/t Au from 86m
Sapphire	8m @ 6.28g/t Au from 66m in hole 26SPRC017 including 1m @ 16.70g/t Au from 68m and 1m @ 13.50g/t Au from 70m
Sapphire	1m @ 1.05g/t Au from 77m in hole 26SPRC017
Sapphire	11m @ 3.91g/t Au from 62m in hole 26SPRC018
Sapphire	9m @ 2.32g/t Au from 74m in hole 26SPRC019
Sapphire	7m @ 2.44g/t Au from 74m in hole 26SPRC020
Sapphire	1m @ 3.24g/t Au from 34m in hole 26SPRC021
Sapphire	2m @ 0.86g/t Au from 32m in hole 26SPRC022
Sapphire	6m @ 0.63g/t Au from 19m in hole 26SPRC023
Sapphire	5m @ 0.89g/t Au from 30m in hole 26SPRC024
Sapphire	1m @ 0.63g/t Au from 27m in hole 26SPRC028

ASX:GA8

GoldArc Resources

goldarcres.com.au

104 Colin Street
West Perth WA 6005

+61 8 9420 8208

Appendix 1

RC Drillhole Information

Hole ID	Grid	Easting	Northing	RL	Depth	Dip	Azimuth	Tenement
26ECRC001	GDA94 / MGA zone 51	347,848	6,749,040	453	36	-60	337	M40/117
26ECRC002	GDA94 / MGA zone 51	347,853	6,749,035	453	48	-60	337	M40/117
26ECRC003	GDA94 / MGA zone 51	347,857	6,749,026	453	54	-60	337	M40/117
26ECRC004	GDA94 / MGA zone 51	347,861	6,749,017	453	60	-60	337	M40/117
26ECRC005	GDA94 / MGA zone 51	347,866	6,749,005	453	84	-60	337	M40/117
26ECRC006	GDA94 / MGA zone 51	347,898	6,749,044	452	36	-60	337	M40/117
26ECRC007	GDA94 / MGA zone 51	347,922	6,749,043	452	60	-60	337	M40/117
26ECRC008	GDA94 / MGA zone 51	347,926	6,749,034	453	72	-60	337	M40/117
26ECRC009	GDA94 / MGA zone 51	347,938	6,749,064	452	72	-60	337	M40/117
26ECRC010	GDA94 / MGA zone 51	347,943	6,749,053	452	72	-60	337	M40/117
26ECRC011	GDA94 / MGA zone 51	347,967	6,749,098	452	72	-60	337	M40/117
26ECRC012	GDA94 / MGA zone 51	347,973	6,749,083	452	72	-60	337	M40/117
26ECRC013	GDA94 / MGA zone 51	347,834	6,749,028	453	66	-60	337	M40/117
26ECRC014	GDA94 / MGA zone 51	347,750	6,749,023	454	48	-60	337	M40/117
26ECRC015	GDA94 / MGA zone 51	347,754	6,749,013	454	54	-60	337	M40/117
26ECRC016	GDA94 / MGA zone 51	347,735	6,749,006	454	60	-60	337	M40/117
26ECRC017	GDA94 / MGA zone 51	347,740	6,748,995	454	60	-60	337	M40/117
26ECRC018	GDA94 / MGA zone 51	347,701	6,749,012	454	36	-60	337	M40/117
26ECRC019	GDA94 / MGA zone 51	347,708	6,748,995	454	66	-60	337	M40/117
26ECRC020	GDA94 / MGA zone 51	347,713	6,749,006	454	48	-60	337	M40/117
26EURC001	GDA94 / MGA zone 51	345,164	6,748,491	461	48	-60	330	M40/56
26EURC002	GDA94 / MGA zone 51	345,173	6,748,474	461	48	-60	330	M40/56
26EURC003	GDA94 / MGA zone 51	345,182	6,748,447	463	60	-60	330	M40/56
26EURC004	GDA94 / MGA zone 51	345,069	6,748,424	466	60	-60	330	M40/56
26EURC005	GDA94 / MGA zone 51	345,003	6,748,424	464	30	-60	330	M40/56
26EURC006	GDA94 / MGA zone 51	345,012	6,748,402	463	42	-60	330	M40/56
26EURC007	GDA94 / MGA zone 51	345,000	6,748,363	459	48	-60	330	M40/56
26EURC008	GDA94 / MGA zone 51	345,010	6,748,344	458	66	-60	330	M40/56
26EURC009	GDA94 / MGA zone 51	344,927	6,748,388	462	30	-60	330	M40/56
26JURC001	GDA94 / MGA zone 51	345,668	6,748,758	466	42	-60	337	M40/117
26JURC002	GDA94 / MGA zone 51	345,674	6,748,745	465	60	-60	337	M40/117
26JURC003	GDA94 / MGA zone 51	345,681	6,748,771	466	30	-60	337	M40/117
26JURC004	GDA94 / MGA zone 51	345,690	6,748,752	465	54	-60	337	M40/117
26JURC005	GDA94 / MGA zone 51	345,701	6,748,784	466	48	-60	337	M40/117
26JURC006	GDA94 / MGA zone 51	345,708	6,748,769	465	60	-60	337	M40/117
26JURC007	GDA94 / MGA zone 51	345,695	6,748,775	466	42	-60	337	M40/117
26JURC008	GDA94 / MGA zone 51	345,717	6,748,748	465	84	-60	337	M40/117
26JURC009	GDA94 / MGA zone 51	345,725	6,748,729	465	102	-60	337	M40/117
26JURC010	GDA94 / MGA zone 51	345,745	6,748,770	466	84	-60	337	M40/117
26JURC011	GDA94 / MGA zone 51	345,767	6,748,792	467	78	-60	337	M40/117
26JURC012	GDA94 / MGA zone 51	345,776	6,748,772	467	96	-60	337	M40/117

ASX:GA8

GoldArc Resources

goldarcres.com.au

104 Colin Street
West Perth WA 6005

+61 8 9420 8208





GoldArc



Hole ID	Grid	Easting	Northing	RL	Depth	Dip	Azimuth	Tenement
26ORRC001	GDA94 / MGA zone 51	345,962	6,748,894	466	36	-60	337	M40/117
26ORRC002	GDA94 / MGA zone 51	345,970	6,748,872	466	54	-60	337	M40/117
26ORRC003	GDA94 / MGA zone 51	345,979	6,748,850	466	72	-55	337	M40/117
26ORRC004	GDA94 / MGA zone 51	345,989	6,748,828	466	90	-55	337	M40/117
26ORRC005	GDA94 / MGA zone 51	346,013	6,748,850	466	84	-55	337	M40/117
26ORRC006	GDA94 / MGA zone 51	346,018	6,748,828	466	108	-55	337	M40/117
26ORRC007	GDA94 / MGA zone 51	346,033	6,748,842	466	102	-60	337	M40/117
26ORRC008	GDA94 / MGA zone 51	346,041	6,748,822	466	126	-55	337	M40/117
26ORRC009	GDA94 / MGA zone 51	346,065	6,748,822	466	120	-60	337	M40/117
26ORRC010	GDA94 / MGA zone 51	346,195	6,748,847	464	120	-55	337	M40/117
26ORRC011	GDA94 / MGA zone 51	346,205	6,748,894	464	102	-60	292	M40/117
26ORRC012	GDA94 / MGA zone 51	346,208	6,748,894	464	78	-60	337	M40/117
26ORRC013	GDA94 / MGA zone 51	346,215	6,748,880	464	78	-55	337	M40/117
26ORRC014	GDA94 / MGA zone 51	346,225	6,748,899	464	84	-55	337	M40/117
26ORRC015	GDA94 / MGA zone 51	346,249	6,748,907	464	66	-55	337	M40/117
26SPRC001	GDA94 / MGA zone 51	347,133	6,749,037	459	60	-60	337	M40/117
26SPRC002	GDA94 / MGA zone 51	347,141	6,749,018	458	78	-60	337	M40/117
26SPRC003	GDA94 / MGA zone 51	347,230	6,749,012	457	48	-60	337	M40/117
26SPRC004	GDA94 / MGA zone 51	347,236	6,748,999	457	48	-60	337	M40/117
26SPRC005	GDA94 / MGA zone 51	347,276	6,749,019	457	66	-60	337	M40/117
26SPRC006	GDA94 / MGA zone 51	347,290	6,749,009	457	66	-60	337	M40/117
26SPRC007	GDA94 / MGA zone 51	347,304	6,749,029	456	42	-60	337	M40/117
26SPRC008	GDA94 / MGA zone 51	347,311	6,749,014	456	60	-60	337	M40/117
26SPRC009	GDA94 / MGA zone 51	347,317	6,748,999	456	72	-60	337	M40/117
26SPRC010	GDA94 / MGA zone 51	347,325	6,748,963	456	132	-60	337	M40/117
26SPRC011	GDA94 / MGA zone 51	347,337	6,749,007	456	84	-60	337	M40/117
26SPRC012	GDA94 / MGA zone 51	347,351	6,748,973	456	114	-60	337	M40/117
26SPRC013	GDA94 / MGA zone 51	347,357	6,748,958	456	126	-60	337	M40/117
26SPRC014	GDA94 / MGA zone 51	347,370	6,748,970	456	132	-60	337	M40/117
26SPRC015	GDA94 / MGA zone 51	347,404	6,749,002	456	78	-55	337	M40/117
26SPRC016	GDA94 / MGA zone 51	347,409	6,748,986	455	102	-60	337	M40/117
26SPRC017	GDA94 / MGA zone 51	347,424	6,749,006	455	84	-55	337	M40/117
26SPRC018	GDA94 / MGA zone 51	347,439	6,749,015	455	78	-60	337	M40/117
26SPRC019	GDA94 / MGA zone 51	347,444	6,749,002	455	90	-60	337	M40/117
26SPRC020	GDA94 / MGA zone 51	347,459	6,749,030	455	72	-60	337	M40/117
26SPRC021	GDA94 / MGA zone 51	347,476	6,749,052	455	54	-60	337	M40/117
26SPRC022	GDA94 / MGA zone 51	347,494	6,749,057	454	42	-60	337	M40/117
26SPRC023	GDA94 / MGA zone 51	347,576	6,749,068	454	36	-60	337	M40/117
26SPRC024	GDA94 / MGA zone 51	347,593	6,749,034	454	54	-60	337	M40/117
26SPRC025	GDA94 / MGA zone 51	347,674	6,749,097	453	78	-60	337	M40/117
26SPRC026	GDA94 / MGA zone 51	347,695	6,749,095	453	30	-60	337	M40/117
26SPRC027	GDA94 / MGA zone 51	347,701	6,749,083	453	24	-60	337	M40/117
26SPRC028	GDA94 / MGA zone 51	347,707	6,749,069	453	42	-60	337	M40/117
26SPRC029	GDA94 / MGA zone 51	347,529	6,749,076	454	48	-60	337	M40/117

ASX:GA8

GoldArc Resources

goldarcres.com.au

104 Colin Street
West Perth WA 6005

+61 8 9420 8208



Appendix 2 – JORC Code, 2012 Edition – Table 1

Section 1 – Sampling Techniques and Data

(Criteria in this section apply to all succeeding sections.)

Criteria	Commentary
Sampling techniques	<ul style="list-style-type: none"> • Samples within the Projects were collected using Reverse Circulation (RC) drilling. Holes were angled at 60°. Given the status of the Project this is considered reasonable. • RC samples were collected every 1m downhole using a cyclone splitter. Samples were collected using industry standard methods. • All samples were crushed at the independent international accredited laboratory, with 40g fire assay (40g FA/AAS) – an established Industry-standard method for gold mineralisation • The sampling techniques used are deemed appropriate for the style of mineralisation and exploration undertaken. • GoldArc ensures all sample preparation was completed by independent international accredited laboratories.
Drilling techniques	<ul style="list-style-type: none"> • RC Drilling was undertaken by MMS Industry Drilling methods and equipment were utilised to maximise sample integrity and recovery.
Drill sample recovery	<ul style="list-style-type: none"> • All care was taken by MMS to maximise the drill sample recovery. • Sample recovery and condition data are noted in geological comments as part of the logging process for RC drilling. • No quantitative twinned drilling has been undertaken. No relationship was able to be settled due to limited data.
Logging	<ul style="list-style-type: none"> • All drill holes have been geologically logged to an appropriate level of detail to support a mineral resource estimation. • Logging is qualitative in nature based on the observational skills and experience of the rig Geologist. • All drilling was logged from start of hole to end of hole and all holes were logged. • Logging was captured digitally and imported into database.
Sub-sampling techniques and sample preparation	<ul style="list-style-type: none"> • Samples were prepared and analysed at Bureau Veritas lab in Kalgoorlie. • Samples were crushed so that each sample had a nominal 85% passing 2mm • All samples were analysed for gold 40g fire assay (40g FA/AAS). • Sample preparation was by Bureau Veritas lab in Kalgoorlie, and the samples were pulverised to less than 75um. • The QAQC procedure included assaying of Oreas Standards, sand blanks and quartz washes between certain samples. • Industry standard sampling methods employed, and size of samples is appropriate for material sampled.
Quality of assay data and laboratory tests	<ul style="list-style-type: none"> • All samples were assayed by industry-standard techniques • Typical analysis methods are detailed in the previous section and are considered 'near total' values. • Routine 'standard' (mineralised pulp) Certified Reference Material (CRM) was inserted by GoldArc at a nominal rate of 1 in 25 samples. • Routine 'blank' material (unmineralised sand) was inserted at a nominal rate of 1 in 50 samples. • Composite duplicates along with primary duplicates were obtained at a nominal rate of 1 in 50 samples. • No significant issues have been noted. The techniques are considered quantitative in nature. • The Analytical method is considered appropriate for samples with visible gold observed. • The analytical laboratories provided their own routine quality controls within their own practices as per international ISO standards.
Verification of sampling and assaying	<ul style="list-style-type: none"> • Independent verification of significant intersections was carried out by additional company personnel, reviewing the original laboratory files and the assay database. Additional company personnel were present from the point of logging the geology to submission of the samples. • This drilling was in confirmation holes for verification purposes. • There has been no adjustment to the assay data.
Location of data points	<ul style="list-style-type: none"> • Drill hole collars were surveyed in GDA 94_51 coordinates using both handheld GPS. • Down hole surveys were taken at the end of the drilling using the Axis Gyro tool.

ASX:GA8

GoldArc Resources

goldarcres.com.au

104 Colin Street
West Perth WA 6005

+61 8 9420 8208

Criteria	Commentary
Data spacing and distribution	<ul style="list-style-type: none"> Drill spacing was about 10-20m to test the gaps in historical drilling and gold grade variation. The drilling has confirmed the continuity of mineralisation consistent with the resource classifications.
Orientation of data in relation to geological structure	<ul style="list-style-type: none"> The drilling is approximately perpendicular to the strike and dip of mineralisation and therefore the sampling is considered representative of the mineralised zones. The deposits are aligned with well-defined structural orientations and drilling is oriented to generally intersect at a high angle to the mineralisation and the holes have been angled at -60°.
Sample security	<ul style="list-style-type: none"> Samples were delivered to the laboratory prep facility in Kalgoorlie by MMS personnel.
Audits or reviews	<ul style="list-style-type: none"> Reviews by independent consultants have been carried out No formal audits have taken place

Section 2 – Reporting of Exploration Results

(Criteria in this section apply to all succeeding sections)

Criteria	Commentary
Mineral tenement and land tenure status	<ul style="list-style-type: none"> RC was drilled at Niagara Trend located on Mining Lease M40/117 and M40/56. GoldArc Resources Limited (previously Asra Minerals Ltd) acquired 70% of the tenements from Kalgoorlie Mining Associates Pty Ltd and Zigmund Wolski. GoldArc retains a first right of refusal over the remaining 30% of the project. Historical Drilling Data Review was carried on valid Western Australian Mining Licenses and the leases are in good standing. The Niagara Gold Project in the Kookynie Gold District of Western Australia comprises eight granted Mining Leases (M40/02, M40/08, M40/26, M40/56, M40/117, M40/192, M40/342, M40/344), two granted Exploration Licenses (E40/396 and E40/397), three pending Exploration Licenses (E40/413, E40/415, E40/416), and nine pending Prospecting Licenses (P40/1533, P40/1546, P40/1547, P40/1548, P40/1549, P40/1550, P40/1553, P40/1556, P40/1557). The combined area of the project is approximately 38, 400 ha. There is a 2% Royalty to a third party for minerals on these licenses. There are no known impediments to obtaining a license to operate.
Exploration done by other parties	<ul style="list-style-type: none"> Niagara Gold Tenements have undergone multiple drill programs over a protracted period focusing on areas around the historic prospects of Cosmopolitan, Diamantina, Orion, Sapphire, Gladstone, Missing Link, Eclipse, OK, Justice, Challenge, Niagara, Latrobe, and W.E.G. This drilling has already resulted in modern (post 1980) mining campaigns at Diamantina, Orion, and Sapphire. Numerous significant intercepts occur outside of mined areas. 1982 Australian Anglo-American drilling at Orion Sapphire. 1981-1985 Mogul Mining 1982-1987 BP Minerals, Minplex Resources and Spargos Exploration 1984-1989 BP Minerals. 1982-1990 BP Minerals and Hill Minerals and Hillman Gold mines explored the Sapphire workings with RAB and RC drilling. 1990-2000 Money Mining drilled the Diamantina and Cosmopolitan mineralization CRC and DRC drillholes. 1993-1994 Horizon Mining Niagara Project. RC and Diamond drilling for a resource definition at Orion and Sapphire. 2000-2010 Diamond ventures Kookynie Resources and Barminco drilled Diamantina and Cosmopolitan. Kookynie Resources drilled extensions at Sapphire and Orion. 2010-2020 Nex Metals from 2009-2013, sold to A&C Mining Investments in 2014. A&C completed Aircore and RC drilling.
Geology	<ul style="list-style-type: none"> The Kookynie Gold Project is located in the central part of the Norseman-Wiluna belt of the Eastern Goldfields terrane. Host rocks in the region are primarily metasedimentary and metavolcanic lithologies of the Melita greenstones. Gold mineralisation is developed within structures encompassing a range of orientations and deformation styles.

ASX:GA8

GoldArc Resources

goldarcres.com.au

104 Colin Street
West Perth WA 6005

+61 8 9420 8208

Criteria	Commentary
	<ul style="list-style-type: none"> At the Gladstone, Orion and Sapphire deposits, gold mineralisation is controlled by a quartz vein system which trends east-northeast across an iron rich dolerite/gabbro host rock (the Niagara Gabbro Complex). The system dips to the south at between 50° and 80°. The mineralised structure, which is generally 2 to 5 metres wide, appears to be brittle with only minor shearing and alteration of the host gabbro.
Drill hole Information	<ul style="list-style-type: none"> All results reported for historical intersections were reported by previous exploration companies. All drill holes were drilled and reported by Horizon Mining NL in 1993/1994.
Data aggregation methods	<ul style="list-style-type: none"> All reported assay intervals have been length weighted. No top cuts were applied. A nominal cut-off of 0.5 g/t Au was applied with up to 2m of internal dilution allowed. Intervals reported for all holes that are used in the Mineral Resource Estimate. High grade mineralised intervals internal to broader zones of lower grade mineralisation are reported as included intervals. No metal equivalent values have been used or reported.
Relationship between mineralisation widths and intercept lengths	<ul style="list-style-type: none"> The drill holes are interpreted to be approximately perpendicular to the strike and dip of mineralisation. All results were reported as down holes
Diagrams	<ul style="list-style-type: none"> Suitable figures have been included in the body of the announcement.
Balanced reporting	<ul style="list-style-type: none"> Key results and conclusions have been included in the body of the announcement.
Other substantive exploration data	<ul style="list-style-type: none"> Compilation of all historical exploration data at the project is underway and will be stored digitally.
Further work	<ul style="list-style-type: none"> Follow up field work is planned.

ASX:GA8

GoldArc Resources

goldarcres.com.au

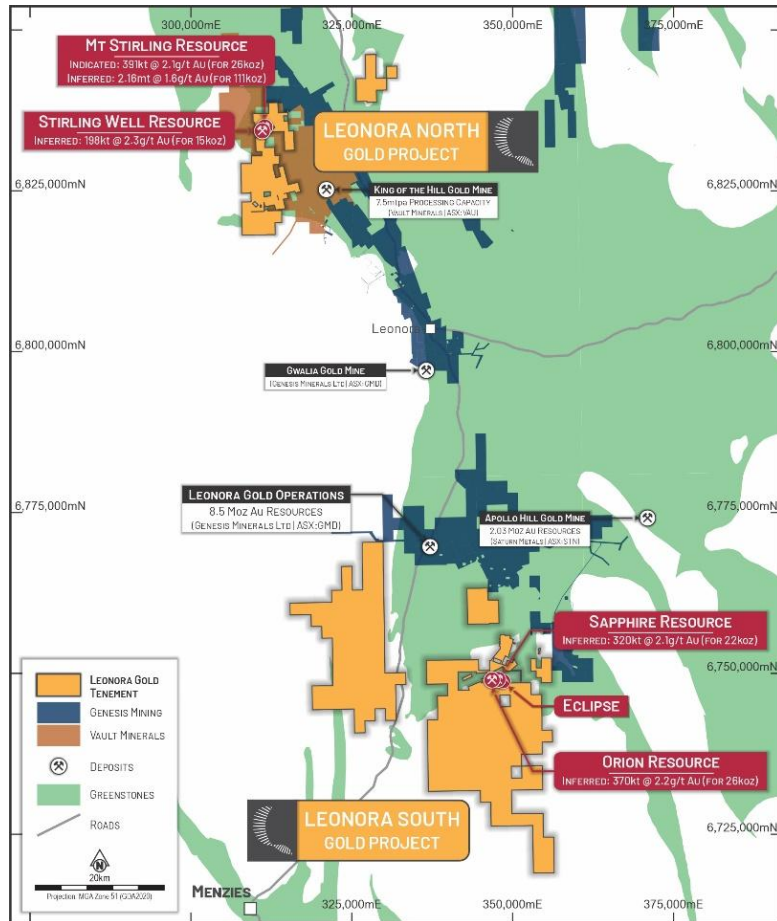
104 Colin Street
West Perth WA 6005

+618 9420 8208



About GoldArc Resources

GoldArc Resources Limited (ASX:GA8) is a Western Australian focused mineral exploration company with a portfolio of highly prospective gold projects located in the world-class Leonora and Kookynie districts of the Eastern Goldfields. GoldArc's strategy is focused on growing its existing 200,000oz JORC resource base and making new, large-scale discoveries through a disciplined and systematic approach to exploration.



GoldArc Resources Total JORC Mineral Resources

GoldArc Gold Projects	Category	Tonnes	Gold Grade (g/t Au)	Gold Ounces
Leonora North - Mt Stirling	Indicated	391,000	2.1	26,000
	Inferred	2,158,000	1.6	111,000
Leonora North - Stirling Well	Inferred	198,000	2.3	15,000
Leonora South - Orion	Inferred	370,000	2.2	26,409
Leonora South - Sapphire	Inferred	320,000	2.1	21,605
Total		3,437,000	1.82	200,014

ASX:GA8

GoldArc Resources

goldarcres.com.au

104 Colin Street
West Perth WA 6005

+61 8 9420 8208

