

# Mt York Gold Project MRE hits 2.1Moz; 50,000m drilling programme underway

## QUARTERLY REPORT FOR THE PERIOD ENDING 31 MARCH 2026

- Mineral Resource Estimate (MRE) for Mt York Gold Project, WA, increases to **61.7Mt @ 1.05 g/t Au for 2.08Moz Au**
- 27,000m of drilling completed in 2025 delivers a 50% resource increase (**700,000oz**) at a **\$13.40/oz discovery cost**
- **50,000m drill programme** underway in 2026, targeting resource extension, infill and exploration
- **Second \$10 million** payment received from PLS Group Ltd (PLS) relating to a Tenement Sales Agreement in 2024
- **Mining Lease granted** for Mt York, derisking project development
- Company name changed to **“Pilbara Gold Limited”** and ASX ticker to **“PGL”**, along with a 1-for-15 share consolidation after receiving approval by Shareholders
- **Cash balance of \$30.5M** to fund 2026 drilling activities and feasibility work towards Final Investment Decision (FID).

Pilbara Gold Limited (ASX: PGL) (‘PGL’ or the ‘Company’, formerly ‘Kairos Minerals Ltd’) is pleased to report on its activities for the quarter ended 31 March 2026.

## MT YORK GOLD PROJECT

### Updated Mineral Resource Estimate (MRE)

Post quarter-end, in April, the Company announced an updated Mineral Resource Estimate for its Mt York Gold Project in WA’s Pilbara of **61.7Mt @ 1.05 g/t Au for 2.08Moz Au**<sup>1</sup>. The update resulted from 27,000m of drilling completed in 2025 and delivered a 50% resource increase (700,000oz) at a \$13.40/oz discovery cost.

*Table 1. 2026 Resource Estimation for Mt York Gold Project*

Deposit	Cut-off (g/t Au)	Indicated			Inferred			Total		
		Tonnes (Mt)	Au (g/t)	Ounces (koz)	Tonnes (Mt)	Au (g/t)	Ounces (koz)	Tonnes (Mt)	Au (g/t)	Ounces (koz)
<b>Mt York</b>	0.4	42.1	1.02	1,380	19.7	1.11	703	<b>61.7</b>	<b>1.05</b>	<b>2,082</b>

1. Mineral Resources reported above a cut-off grade of 0.4 g/t Au inside an optimised A\$5,500 pit shell
2. Rounding of figures may cause apparent discrepancies in totals

<sup>1</sup> ASX Announcement dated 13 April 2026 entitled ‘New 2.1Moz gold resource at Mt York lays strong foundation for rapid development’





The Mt York gold project is a continuous zone of gold mineralisation hosted within a banded iron formation (BIF), with mineralisation now confirmed over 4.2km of strike length. The 2025 drilling underpinning the MRE update focussed on extending mineralisation at depth at Breccia Hill and Main Hill, testing along-strike to the northwest onto the Main Hill Extension beyond the limits of the existing resource, and to infill and increase the confidence level of thick zones of mineralisation at Main Hill. All of these aims were achieved in 2025, with mineralisation extended in all directions with the deposit remaining open at depth and along strike.

The update MRE of 61.7 Mt at 1.05g/t Au for 2.08Moz represents a **43% increase in tonnes** and a **5% increase in grade** for an overall **50% increase in contained gold** from 1.38Moz to 2.08Moz compared to the 2023 Resource (Table 2). This includes a 100% increase in ounces within the Indicated category driven predominantly by infill drilling of wide zones of Inferred mineralisation at Main Hill.

The updated Mt York MRE is reported within an optimised pit shell based on a A\$5500/oz gold price and is reported above a 0.40 g/t Au cut-off grade. The gold price used in the optimisation work represents a 22% discount to the six-month volume-weighted average price (VWAP) of gold and a 23% discount to the closing price on April 10, 2026 (source: Perth Mint, [www.perthmint.com](http://www.perthmint.com)).

The cut-off grade of 0.4 g/t Au selected for the project reflects an appropriate lower cut-off grade for a resource that has 'reasonable prospects for eventual economic extraction' (RPEEE) from an open pit mining operation.

**Table 2. Changes between 2023 and 2026 MREs for Mt York Gold Project**

Resource	Cut-off (g/t Au)	Indicated			Inferred			Total		
		Tonnes (Mt)	Au g/t	Ounces (koz)	Tonnes (Mt)	Au g/t	Ounces (koz)	Tonnes (Mt)	Au g/t	Ounces (koz)
Mt York May 2023	0.5	20.3	1.06	690	22.8	0.95	697	43.1	1.00	1,385
Mt York April 2026	0.4	42.1	1.02	1,380	19.7	1.11	703	<b>61.7</b>	<b>1.05</b>	<b>2,082</b>
Change	<b>-0.1</b>	<b>21.8</b>	<b>-0.04</b>	<b>690</b>	<b>-3.1</b>	<b>0.16</b>	<b>6</b>	<b>18.6</b>	<b>0.05</b>	<b>697</b>
% Change	<b>-20%</b>	<b>107%</b>	<b>-4%</b>	<b>100%</b>	<b>-14%</b>	<b>17%</b>	<b>1%</b>	<b>43%</b>	<b>5%</b>	<b>50%</b>

1. 2026 Mineral Resources reported above a cut-off grade of 0.4 g/t Au inside an optimised A\$5,500 pit shell
2. 2023 Mineral Resource reported above a cut-off grade of 0.5 g/t Au above -150mRL
3. Rounding of figures may cause apparent discrepancies in totals



## Application of Cut-Off Grades

The variability of cut-off grades applied to the 2026 MRE constrained within pit shell 15 (A\$5,500/oz gold price, 0.4g/t lower cut-off grade) is shown in **Table 3**.

Using a **0.4 g/t Au** cut-off grade, the MRE contains **61.7Mt @ 1.05 g/t Au for 2,082,000oz**. Using a cut-off grade of **1.0g/t Au**, the MRE contains **26.0Mt @ 1.57 g/t Au for 1,312,000oz**.

**Table 3. Cut-off grades applied to the 2026 in-pit MRE**

Cut off Au g/t	Within rf1.00 shell 15 - A\$5500/oz						
	Indicated		Inferred		Total		
	Tonnes (Mt)	Au g/t	Tonnes (Mt)	Au g/t	Tonnes (Mt)	Au g/t	Au koz
0.1	47.9	0.93	23.0	1	70.9	0.95	2,171
0.2	47.3	0.94	22.9	1	70.2	0.96	2,167
0.3	45.4	0.97	22.0	1.03	67.4	0.99	2,143
<b>0.4</b>	<b>42.1</b>	<b>1.02</b>	<b>19.7</b>	<b>1.11</b>	<b>61.7</b>	<b>1.05</b>	<b>2,082</b>
<b>0.5</b>	<b>36.9</b>	<b>1.1</b>	<b>17.0</b>	<b>1.22</b>	<b>53.9</b>	<b>1.14</b>	<b>1,973</b>
0.6	32.4	1.18	15.3	1.3	47.7	1.22	1,868
0.7	28.0	1.26	13.7	1.37	41.7	1.30	1,739
0.8	24.2	1.34	12.1	1.46	36.2	1.38	1,607
0.9	20.3	1.44	10.5	1.55	30.9	1.48	1,468
<b>1.0</b>	<b>16.7</b>	<b>1.54</b>	<b>9.2</b>	<b>1.63</b>	<b>26.0</b>	<b>1.57</b>	<b>1,312</b>
1.1	13.9	1.65	7.8	1.74	21.6	1.68	1,171
1.2	11.0	1.78	6.2	1.89	17.3	1.82	1,011
1.3	9.0	1.9	4.9	2.07	13.9	1.96	877
1.4	7.5	2.01	3.8	2.27	11.4	2.10	768
1.5	6.4	2.1	3.4	2.36	9.9	2.19	694

## Further Potential Resource Increases

Optimisation work on the 2026 resource model has shown, yet again, that the pit shell selected using a \$5,500/oz gold price bottoms out on the deepest level of drilling across the deposit. This means that there is strong potential to drive the pits deeper once drilling is completed below the optimal pit shell. The drilling throughout 2025 demonstrated clearly in many of the deeper holes showed strong, consistent and wide mineralisation at depth, such as drill hole 25MYDD031 in the area coined 'Monster' below Main Hill that returned **53m @ 1.45 g/t Au from 212m** including **10m @ 2.95 g/t Au from 239m<sup>2</sup>**.

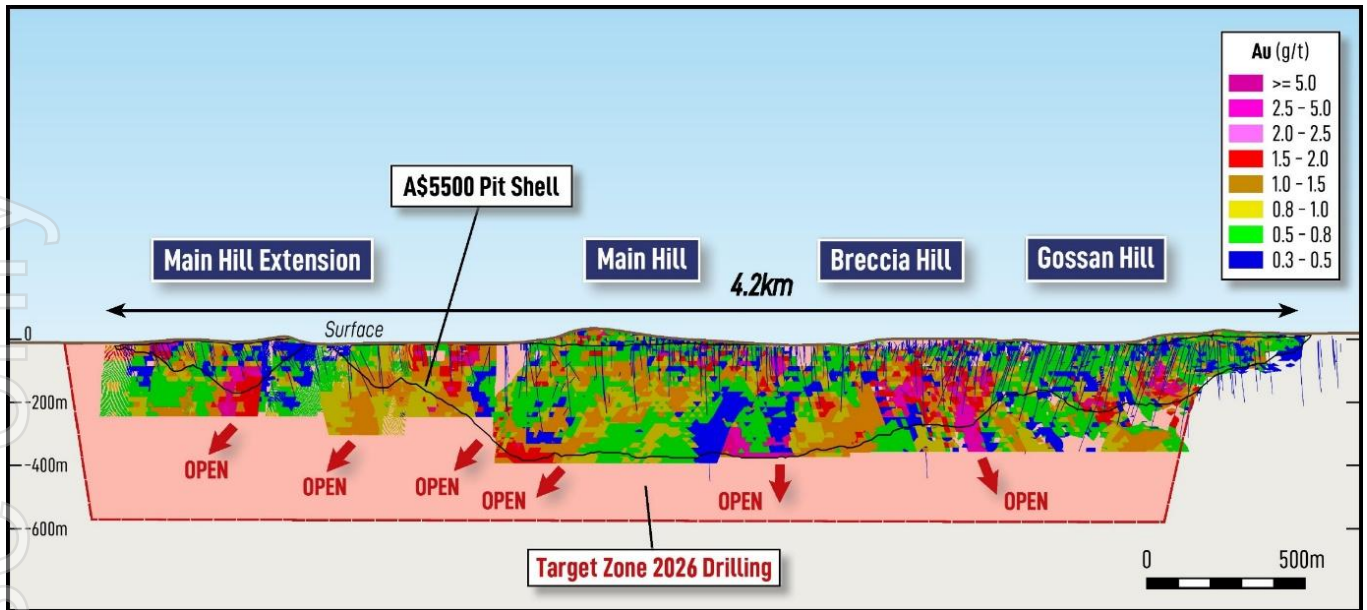
The pit optimisation exercise emphasises that the resource has not been tested below these depths despite wide and higher-grade mineralisation persisting, therefore raising the probability that there will be increased resource growth in 2026 in these areas.

In addition, large areas under Main Hill and Main Hill Extension have not been tested below 100m depth and the pit optimisation bottoms out at the base of Inferred and Indicated material along much of the deposit there as well. The deepest drilling at the base of the deposit remain mineralised and additional drilling is planned to significantly extend mineralisation down-dip during 2026.

Further resource estimation exercises are expected to be completed throughout 2026.

More detail on the updated Mt York MRE is available in the ASX announcement dated 13 April 2026.

<sup>2</sup> ASX announcement dated 6 August 2025 entitled 'Drilling discovers new 'Monster' gold zone near Main Hill at Mt York, WA.'



**Figure 1.** Long-section view of the Mt York Resource model looking northeast displaying Indicated + Inferred with Au > 0.4g/t resource blocks. The modelled mineralisation is limited only by drilling in most areas, particularly below the optimal pit shell.

### Drilling Results

Prior to the release of the Mineral Resource Estimate update for Mt York, the Company announced results from its 2025 drilling completed across the project, including the Main Hill Extension target, which had never seen systematic resource drilling.

Pilbara Gold completed 30 RC and 16 diamond holes over 1,200m of the 1,500m strike length for a total of 6,867.1m at the Main Hill Extension Prospect at the end of 2025. Drilling was conducted on fences approximately 100m apart, with average downhole drilling depths of 150m.

Drilling focused on testing shallow mineralisation on broad spacings over an initial 1,200m of strike along the geological extension to the mineralisation. The drilling identified key higher-grade positions for immediate follow-up drilling as well as defined sufficient grade and widths of mineralisation to support the upcoming resource estimation that will include the total ~27,000m of new drilling completed in 2025. Drilling in 2026 will target, with a new understanding of the geological and mineralisation models from the 2025 drilling, an increase in resource growth and confidence throughout the year.

In February, it reported results from 35 of the 46 holes with best intercepts including<sup>3</sup>:

- **16m @ 2.60 g/t Au** from 143m including **2m @ 12.45 g/t Au** from 144m, **2m @ 4.19 g/t Au** from 157m (25MYDD082)
- **9m @ 3.92 g/t Au** from 97m including **1m @ 8.34 g/t Au** from 103m and **1m @ 4.04 g/t Au** from 116m (25MYDD072)
- **8m @ 1.61 g/t Au** from 42m including **3m @ 2.43 g/t Au** from 43m (25MYRC019)
- **25m @ 0.72 g/t Au** from 97m including **5m @ 1.91 g/t Au** from 98m (25MYRC028)
- **9m @ 2.66 g/t Au** from 27m including **3m @ 4.82 g/t Au** from 29m (25MYRC026).

Final results from Main Hill Extension were reported on 4 March 2026, with results reported from the remaining 11 holes<sup>4</sup>. The best intercept received as from 25MYDD085 which returned **8m @ 3.81 g/t Au** from 128m including **1m @ 11.16 g/t Au** from 133m.

This result is approximately 50m down dip of the high-grade intercept of **9m @ 3.92 g/t Au** from 97m in drillhole

<sup>3</sup> ASX announcement dated 4 February 2026 entitled 'Significant extension to Mt York gold trend confirmed'

<sup>4</sup> ASX announcement dated 4 March 2026 entitled 'Final drill results reaffirm Mt York Gold Project extension ahead of updated MRE'



25MYDD072 (Figure x) and demonstrates the potential for wide and continuous high-grade mineralisation to occur within the Main Hill Extension.

### Granted Mining Lease

In February, the Company announced that mining lease M45/1306 has been granted by the WA Government. M45/1306 covers Pilbara Gold's 1.4Moz Mt York Gold Project in WA's Pilbara (Figure 1). Grant of the mining lease marks an important milestone on the pathway towards Mt York's development and ultimately, production. A granted mining lease gives Pilbara Gold the right to mine, treat and process the gold mineralisation and to build mining infrastructure subject to grant of further approvals for mine planning and closure, environmental etc. which the Company will seek as it progresses towards completion of its feasibility study.

## CORPORATE

### \$10M Payment from PLS

In February, the Company announced it had received the second and final \$10M payment from PLS pursuant to the Tenement Sale Agreement ('TSA') dated 30 July 2024 for the six prospecting licences and the overlying mining lease application M45/1307 sold to PLS for total consideration of \$20M<sup>5</sup>.

The deal terms were outlined in a Company ASX Announcement dated 1 August 2024<sup>6</sup>.

The Company received the first \$10M payment on 5 September 2024 on completion of the transaction<sup>7</sup>.

The second and final \$10M payment to The Company, which PLS elected to pay in cash, was triggered by the grant of PLS' mining lease application M45/1307, which occurred on 22 January 2026.

Additionally, and pursuant to the same TSA, Pilbara Gold and PLS signed a royalty deed with respect to M45/1307. A 2% Gross Revenue royalty is payable by PLS to Pilbara Gold from the sale of any product (lithium, tantalum and all other minerals including gold) as a perpetual royalty on and from the Grant Date of M45/1307.

### Name Change and Share Consolidation

At an Extraordinary General Meeting held on 30 March, Shareholders approved to:

- Change the Company's name from "Kairos Minerals Limited" to "Pilbara Gold Limited" and ASX ticker code to "PGL", and
- Undertake a consolidation of the Company's issued securities on a 1-for-15 basis (the "Consolidation").

Following shareholder approval at the Meeting, the Company proceeded to change its name to "Pilbara Gold Limited", which was completed on 22 April 2026.

The Share Consolidation process is now complete and the Company's shares are trading under the "PGL" code. The Company's existing options and performance rights were also consolidated, and the exercise price of the options amended as directed by the ASX Listing Rules.

No change to the underlying value of shareholders' holdings has resulted from the Consolidation, aside from rounding adjustments.

### Cash Balance and Exploration Expenditure

At the end of the quarter, the Company had \$30.5M in cash. At the beginning of the quarter, the Company had

<sup>5</sup> ASX announcement dated 9 February 2026 entitled 'KAI receives second \$10M under TSA'

<sup>6</sup> ASX announcement dated 1 August 2024 entitled 'Non-core Mt York ground sold to Pilbara Minerals for \$20M'

<sup>7</sup> ASX announcement dated 5 September 2024 entitled 'Completion of sale of non-core tenements to Pilbara Minerals and receipt of first \$10M.'



cash and cash equivalents of \$25M, that was boosted by the \$10M payment by PLS.

The majority of the expenditure during the quarter was directed to drilling of the Mt York Gold Project where activities were completed in mid-December 2025.

Payments to related parties described in the accompanying Appendix 5B totaling \$0.12M relate to salaries and fees to directors under existing remuneration agreements and legal and compliance consulting fees.

This announcement has been approved for release by the Board of Pilbara Gold Limited.

– ENDS –

For more information, please contact:

**Nathan Ryan**  
**NWR Communications**  
 0420 582 887

### About Pilbara Gold Limited

Pilbara Gold Limited (ASX: PGL) (formerly “Kairos Minerals Limited”) owns 100% of the flagship **2.1 Moz Mt York Gold Project** in the Pilbara of Western Australia that was partially mined by Lynas Gold NL between 1994 and 1998. Pilbara Gold has recognised that the resource, hosted in an Archaean Banded Iron Formation or BIF, has significant potential to grow further from its current **2.1 Moz base** with significant exploration potential existing within the Mt York ‘**Main Trend**’ and its extension towards the northwest where Pilbara Gold owns the mineral rights for gold. Current resources are estimated within a pit shell using a A\$5,500/oz gold price and a 0.4 g/t Au lower cutoff grade (table below).

Deposit	Cut-off (g/t Au)	Indicated			Inferred			Total		
		Tonnes (Mt)	Au (g/t)	Ounces (koz)	Tonnes (Mt)	Au (g/t)	Ounces (koz)	Tonnes (Mt)	Au (g/t)	Ounces (koz)
<b>Mt York</b>	0.4	42.1	1.02	1,380	19.7	1.11	703	<b>61.7</b>	<b>1.05</b>	<b>2,082</b>

Scoping study results released in November 2024 point to a robust, open-cut mining operation through a conventional CIL process route. In 2026, Pilbara Gold will complete a 50,000m of extensional and infill drilling programme where resources are expected to grow further for incorporation into the Prefeasibility Study or PFS. During the resource expansion work, Pilbara Gold will collect important additional information to fine-tune metallurgical processing, geotechnical engineering and mine scheduling.

Pilbara Gold is pursuing a maiden gold resource in 2026 at its 100% owned **Roe Hills Project**, located 120km east of Kalgoorlie in WA’s Eastern Goldfields. The **Terra** and **Caliburn Prospects** that have many geological similarities to some of the deposits at the giant St Ives gold camp, have 1,500m of solid gold intercepts in historic drilling that the Company recognises as a valuable asset in an area surrounded by gold mills and mines.



### JORC Compliance Statement:

For full details of previously announced Exploration Results in this announcement, refer to the ASX announcements previously reported by the Company. The Company confirms that it is not aware of any new information or data that materially affects the information included in the original market announcements and that the form and context in which the Competent Person's findings are presented have not been materially modified from the original market announcements.

The Mineral Resources were first reported in this announcement dated 13 April 2026 (Announcement). The Company confirms that it is not aware of any new information or data that materially affects the information included in the Announcement and, in the case of estimates of mineral resources, that all material assumptions and technical parameters underpinning the estimates continue to apply and have not materially changed.

For personal use only



## Tenement Schedule

Project Tenements	Location	Held at the start of the quarter	Acquired during the quarter	Disposed during the quarter	Held at the end of the quarter
<b>Roe Hills</b>					
E28/1935	WA	100%			100%
E28/2117	WA	100%			100%
E28/2118	WA	100%			100%
E28/2548	WA	100%			100%
E28/2585	WA	100%			100%
E28/2594	WA	100%			100%
E28/2695	WA	100%			100%
E28/2696	WA	100%			100%
E28/2697	WA	100%			100%
E28/3406	WA	100%			100%
E28/3408	WA	100%			100%
E28/3563	WA	100%			100%
<b>Mt York Project</b>					
P45/2987	WA	100%		100%	0%
P45/2989	WA	100%		100%	0%
P45/2990	WA	100%		100%	0%
P45/2991	WA	100%		100%	0%
P45/2994	WA	100%		100%	0%
P45/2996	WA	100%		100%	0%
L45/422	WA	100%			100%
L45/455	WA	100%			100%
L45/660	WA	100%			100%
L45/661	WA	100%			100%
M45/1306	WA	100%			100%
<b>Wodgina Project</b>					
E45/4715	WA	100%			100%
E45/4780					
L45/709					
<b>Kangan Project</b>					



Project Tenements	Location	Held at the start of the quarter	Acquired during the quarter	Disposed during the quarter	Held at the end of the quarter
E45/4740	WA	100%			100%
E45/6160					
E45/6161					
E45/6353					
L 45/873	WA	100%			100%
<b>Lalla Rookh Project</b>					
E45/4741	WA	100%			100%
E45/6145					
E45/6146					
E45/6147					
E45/7009	WA	100%			100%
<b>Rocklea Project</b>					
E45/6322	WA	100%			100%
E45/6323					

## Appendix 5B

### Mining exploration entity or oil and gas exploration entity quarterly cash flow report

Name of entity

Pilbara Gold Limited (ASX: PGL)

ABN

84 006 189 331

Quarter ended ("current quarter")

31 March 2026

Consolidated statement of cash flows	Current quarter \$A'000	Year to date (9 months) \$A'000
<b>1. Cash flows from operating activities</b>		
1.1 Receipts from customers	-	-
1.2 Payments for		
(a) exploration & evaluation	-	-
(b) development	-	-
(c) production	-	-
(d) staff costs	-	-
(e) administration and corporate costs	(132)	(971)
1.3 Dividends received (see note 3)	-	-
1.4 Interest received	283	347
1.5 Interest and other costs of finance paid	-	-
1.6 Income taxes paid	-	-
1.7 Government grants and tax incentives	-	-
1.8 Other (provide details if material)	-	-
<b>1.9 Net cash from / (used in) operating activities</b>	<b>151</b>	<b>(624)</b>

<b>2. Cash flows from investing activities</b>		
2.1 Payments to acquire or for:		
(a) entities	-	-
(b) tenements	-	-
(c) property, plant and equipment	-	-
(d) exploration & evaluation	(4,658)	(14,117)
(e) investments	-	-
(f) other non-current assets	-	-

## Mining exploration entity or oil and gas exploration entity quarterly cash flow report

Consolidated statement of cash flows		Current quarter \$A'000	Year to date (9 months) \$A'000
2.2	Proceeds from the disposal of:		
	(a) entities	-	-
	(b) tenements	10,000	10,000
	(c) property, plant and equipment	-	-
	(d) investments	-	-
	(e) other non-current assets	-	-
2.3	Cash flows from loans to other entities	-	-
2.4	Dividends received (see note 3)	-	-
2.5	Other (provide details if material)	-	-
<b>2.6</b>	<b>Net cash from / (used in) investing activities</b>	<b>5,342</b>	<b>(4,117)</b>

<b>3.</b>	<b>Cash flows from financing activities</b>		
3.1	Proceeds from issues of equity securities (excluding convertible debt securities)	-	26,780
3.2	Proceeds from issue of convertible debt securities	-	-
3.3	Proceeds from exercise of options		
3.4	Transaction costs related to issues of equity securities or convertible debt securities	-	(1,616)
3.5	Proceeds from borrowings		
3.6	Repayment of borrowings	-	-
3.7	Transaction costs related to loans and borrowings		
3.8	Dividends paid	-	-
3.9	Other (Payment of lease liabilities)	(40)	(111)
<b>3.10</b>	<b>Net cash from / (used in) financing activities</b>	<b>(40)</b>	<b>25,053</b>

<b>4.</b>	<b>Net increase / (decrease) in cash and cash equivalents for the period</b>		
4.1	Cash and cash equivalents at beginning of period	25,019	10,160
4.2	Net cash from / (used in) operating activities (item 1.9 above)	151	(624)
4.3	Net cash from / (used in) investing activities (item 2.6 above)	5,342	(4,117)
4.4	Net cash from / (used in) financing activities (item 3.10 above)	(40)	25,053

## Mining exploration entity or oil and gas exploration entity quarterly cash flow report

Consolidated statement of cash flows		Current quarter \$A'000	Year to date (9 months) \$A'000
4.5	Effect of movement in exchange rates on cash held	-	-
<b>4.6</b>	<b>Cash and cash equivalents at end of period</b>	<b>30,472</b>	<b>30,472</b>

5.	Reconciliation of cash and cash equivalents at the end of the quarter (as shown in the consolidated statement of cash flows) to the related items in the accounts	Current quarter \$A'000	Previous quarter \$A'000
5.1	Bank balances	2,457	5,019
5.2	Call deposits	28,015	20,000
5.3	Bank overdrafts	-	-
5.4	Other (provide details)	-	-
<b>5.5</b>	<b>Cash and cash equivalents at end of quarter (should equal item 4.6 above)</b>	<b>30,472</b>	<b>25,019</b>

6.	Payments to related parties of the entity and their associates	Current quarter \$A'000
6.1	Aggregate amount of payments to related parties and their associates included in item 1	99
6.2	Aggregate amount of payments to related parties and their associates included in item 2	25

*Note: if any amounts are shown in items 6.1 or 6.2, your quarterly activity report must include a description of, and an explanation for, such payments.*

## Mining exploration entity or oil and gas exploration entity quarterly cash flow report

7. <b>Financing facilities</b>	<b>Total facility amount at quarter end \$A'000</b>	<b>Amount drawn at quarter end \$A'000</b>
<i>Note: the term "facility" includes all forms of financing arrangements available to the entity. Add notes as necessary for an understanding of the sources of finance available to the entity.</i>		
7.1 Loan facilities	-	-
7.2 Credit standby arrangements	-	-
7.3 Other (please specify)	-	-
7.4 <b>Total financing facilities</b>	-	-
7.5 <b>Unused financing facilities available at quarter end</b>		-
7.6 Include in the box below a description of each facility above, including the lender, interest rate, maturity date and whether it is secured or unsecured. If any additional financing facilities have been entered into or are proposed to be entered into after quarter end, include a note providing details of those facilities as well.		

8. <b>Estimated cash available for future operating activities</b>	<b>\$A'000</b>
8.1 Net cash from / (used in) operating activities (item 1.9)	151
8.2 (Payments for exploration & evaluation classified as investing activities) (item 2.1(d))	(4,675)
8.3 Total relevant outgoings (item 8.1 + item 8.2)	<b>(4,507)</b>
8.4 Cash and cash equivalents at quarter end (item 4.6)	30,472
8.5 Unused finance facilities available at quarter end (item 7.5)	-
8.6 Total available funding (item 8.4 + item 8.5)	<b>30,472</b>
8.7 <b>Estimated quarters of funding available (item 8.6 divided by item 8.3)</b>	<b>6.76</b>
<i>Note: if the entity has reported positive relevant outgoings (ie a net cash inflow) in item 8.3, answer item 8.7 as "N/A". Otherwise, a figure for the estimated quarters of funding available must be included in item 8.7.</i>	
8.8 If item 8.7 is less than 2 quarters, please provide answers to the following questions:	
8.8.1 Does the entity expect that it will continue to have the current level of net operating cash flows for the time being and, if not, why not?	
Answer: N/A	
8.8.2 Has the entity taken any steps, or does it propose to take any steps, to raise further cash to fund its operations and, if so, what are those steps and how likely does it believe that they will be successful?	
Answer: N/A	
8.8.3 Does the entity expect to be able to continue its operations and to meet its business objectives and, if so, on what basis?	
Answer: N/A	
<i>Note: where item 8.7 is less than 2 quarters, all of questions 8.8.1, 8.8.2 and 8.8.3 above must be answered.</i>	

**Compliance statement**

- 1 This statement has been prepared in accordance with accounting standards and policies which comply with Listing Rule 19.11A.
- 2 This statement gives a true and fair view of the matters disclosed.

Date: .....29 April 2026.....

Authorised by: Authorised for release by the Board of Directors  
(Name of body or officer authorising release – see note 4)

**Notes**

1. This quarterly cash flow report and the accompanying activity report provide a basis for informing the market about the entity's activities for the past quarter, how they have been financed and the effect this has had on its cash position. An entity that wishes to disclose additional information over and above the minimum required under the Listing Rules is encouraged to do so.
2. If this quarterly cash flow report has been prepared in accordance with Australian Accounting Standards, the definitions in, and provisions of, *AASB 6: Exploration for and Evaluation of Mineral Resources* and *AASB 107: Statement of Cash Flows* apply to this report. If this quarterly cash flow report has been prepared in accordance with other accounting standards agreed by ASX pursuant to Listing Rule 19.11A, the corresponding equivalent standards apply to this report.
3. Dividends received may be classified either as cash flows from operating activities or cash flows from investing activities, depending on the accounting policy of the entity.
4. If this report has been authorised for release to the market by your board of directors, you can insert here: "By the board". If it has been authorised for release to the market by a committee of your board of directors, you can insert here: "By the [name of board committee – eg Audit and Risk Committee]". If it has been authorised for release to the market by a disclosure committee, you can insert here: "By the Disclosure Committee".
5. If this report has been authorised for release to the market by your board of directors and you wish to hold yourself out as complying with recommendation 4.2 of the ASX Corporate Governance Council's *Corporate Governance Principles and Recommendations*, the board should have received a declaration from its CEO and CFO that, in their opinion, the financial records of the entity have been properly maintained, that this report complies with the appropriate accounting standards and gives a true and fair view of the cash flows of the entity, and that their opinion has been formed on the basis of a sound system of risk management and internal control which is operating effectively.

For personal use only