

# Quarterly Activities Report

## March 2026 Quarter

### Highlights

- Successful completion of the 100% acquisition of the North Queensland Copper-Gold (NQCG) Project in the Mt Isa region of Queensland, Australia.
- Secures a district-scale and highly strategic landholding (~952km<sup>2</sup>) of granted exploration tenure, including ~21.5km<sup>2</sup> of granted Mining Leases, located close to established, and in-construction third-party processing infrastructure owned by major operators including Glencore PLC (LON:GLEN) and Harmony Gold Mining (NYSE:HMY).
- Existing Global Mineral Resource Estimate<sup>1</sup> (MRE) of 18.8Mt @ 1.07% CuEq for ~200kt of contained CuEq metal with potential for multiple new discoveries across a number of advanced prospects.
- Acquisition includes existing infrastructure and incorporates a modern 70-person mining camp, freehold property in Cloncurry and mining equipment.
- Historical drilling outside the current Global Mineral Resource confirms substantial resource growth potential, with numerous high-grade copper-gold intercepts including 30m @ 1.5% Cu (EXRC040), 23m @ 1.06% Cu (EHDD009), 3m @ 7.41% Cu (LMRC001) and 15m @ 9.1g/t Au & 1.5% Cu (VFRC018), supporting the Company's strategy to add significant tonnes to the global resource base through systematic exploration.
- Subsequent to the quarter end, drilling operations commenced at the Barbara Copper-Gold Project, which sits on a granted Mining Lease and presents a substantial opportunity for resource growth and additional discoveries.
- Drill planning at the Hazel Creek Project is advanced, aiming to test for extensions of the copper-gold mineralisation and grow the Mineral Resource Estimate at the Turpentine Deposit.
- Appointment of highly experienced Mining Executive and Geologist Mr Nigel Broomham as Managing Director.

Breakthrough Minerals Limited (**ASX: BTM**) (**BTM or the Company**) is pleased to announce the Quarterly Activities Report for the period ending 31 March 2026 (**March Quarter or the Quarter**), together with the accompanying Appendix 5B cash flow report.

#### Breakthrough Minerals Managing Director, Nigel Broomham, said:

*"The March quarter was a transformative period for BTM, highlighted by the successful completion of our 100% acquisition of the North Queensland Copper-Gold Project. Since quarter end, we have moved quickly to translate our planning into action, with drilling now underway at the Barbara Copper project."*

*"The NQCG Project is a genuinely exciting copper-gold portfolio. We have an existing resource base of 18.8Mt @ 1.07% CuEq for 200kt of contained CuEq metal and a district-scale landholding, and what we believe is significant scope to grow that resource through the drill bit. Our strategy is deliberate and staged; we are focused first on expanding the current resource base, then testing near-mine mineralisation along proven structural corridors, before systematically drill-testing the numerous advanced exploration targets that exist"*

<sup>1</sup> For full details of the Global MRE including JORC 2012 tables for the NQCG Project categorised as Measured (3%), Indicated (31%) and Inferred (66%) refer to BTM ASX Announcement 30 October 2025 - Breakthrough to Acquire North Queensland Copper-Gold Project and Complete \$8.15M Placement

across the tenure. Historical drilling has already demonstrated the potential for high-grade discoveries, and we are only just beginning to unlock what this project has to offer."

"We look forward to providing a steady flow of results through the remainder of 2026 as we work to unlock the full exploration potential of this project."

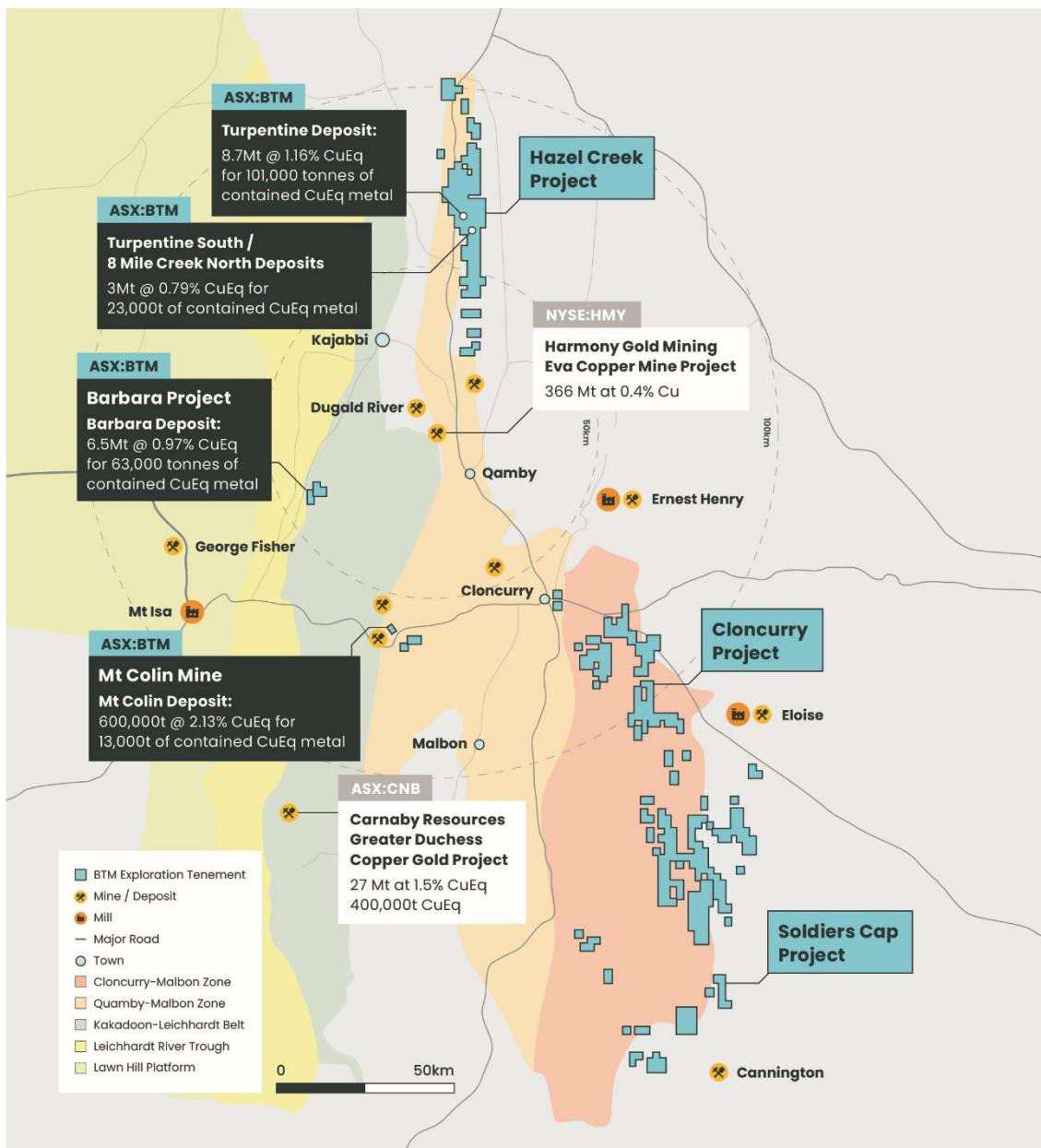


Figure 1: North Queensland Copper-Gold Project – Mt Isa Region, Queensland

## North Queensland Copper Gold Project

The NQCG Project comprises a total of approximately 952km<sup>2</sup> of granted tenure including over 21km<sup>2</sup> of granted Mining Leases. The NQCG Project Global Mineral Resource Estimate (MRE) reported in accordance with JORC (2012) comprises **18.8Mt @ 1.07% CuEq for 200kt of contained CuEq metal** across the Measured (3%), Indicated (31%) and Inferred (66%) mineral resource categories.

During the March quarter, Breakthrough completed the acquisition of the Project from subsidiaries of Aeris

For personal use only

Resources Limited (ASX:AIS) and its related bodies corporate, via the purchase of Dingo Minerals Pty Ltd (Dingo). Completion of the transaction follows the satisfaction (or waiver) of all conditions precedent, including shareholder approvals, completion of the associated capital raising, regulatory approvals and the transfer of tenure<sup>2</sup>.

The NQCG Project is comprised of four project areas as listed below and outlined in **Figure 1**.

- **Hazel Creek Copper-Gold Project (Hazel Creek)** – includes deposits at Turpentine and Turpentine South / Eight Mile Creek North.
- **Barbara Copper-Gold Project (Barbara)** – includes the Barbara deposit.
- **Mt Colin Mine Project** – includes the Mt Colin deposit.
- **Soldiers Cap / Cloncurry Exploration Project.**

The Hazel Creek Project area is host to over half of the project's global resources of copper-gold, and the Barbara Project area is host to approximately one third of the project's global mineral resource estimate of copper-gold. The Company sees strong potential for resource growth through extensional and advanced exploration drilling programs at both of these projects in 2026.

## Hazel Creek Copper-Gold Project

The Hazel Creek Project (EPM26025) is located approximately 100 kilometres to the north of Cloncurry only 20 kilometres from Harmony Gold's Eva project which is currently in development (**Figure 2**).

The project area covers 290 square kilometres of tenure along an 80 kilometre north-south trend in the Boomarra Metamorphics and Corella formation of the Mary Kathleen domain. The project is prospective for IOCG copper-gold mineralisation.

---

<sup>2</sup> ASX Announcement 26 March 2026 – Completion of North Queensland Copper-Gold Project Acquisition

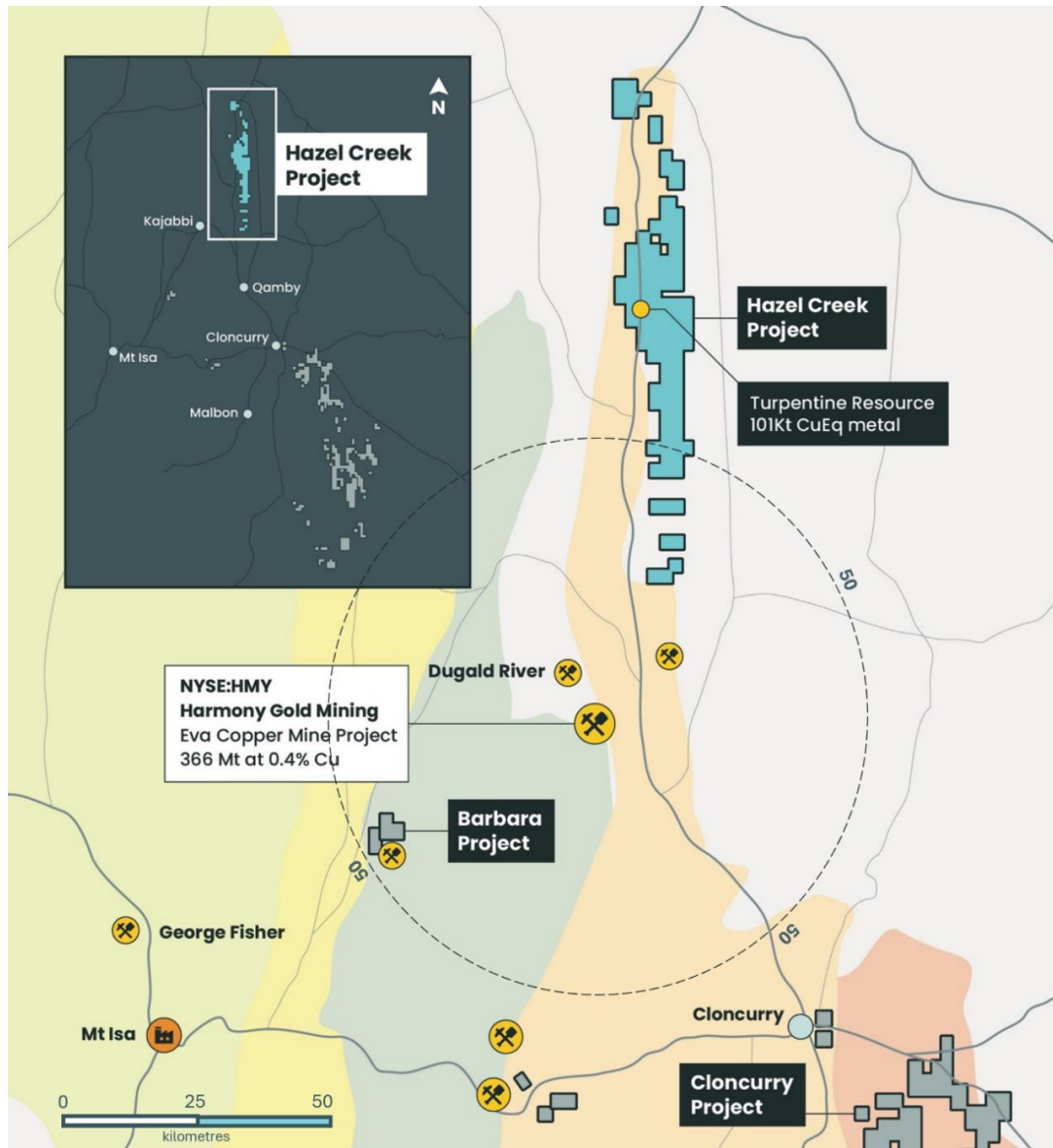


Figure 2: Hazel Creek Project Location, part of the wider Queensland Copper-Gold Project

**Hazel Creek Resource Expansion Drilling – Turpentine Deposit**

The Turpentine Deposit, located within the Hazel Creek Project, hosts an MRE of **8.7Mt @1.16% CuEq** for **101,000t CuEq metal** and remains open down-plunge to the north. This area is a key focus for Breakthrough’s initial drilling program, as the Company targets near-term resource growth.

An initial 3,000m diamond program is planned for Q2 2026 to test for extensions of the copper-gold mineralisation and grow the MRE (Figure 3).

Mineralisation remains open to the north, down-plunge of the high-grade intercept in diamond drillhole EHDD003: **11m @ 2.0% Cu & 0.5 g/t Au from 277m**, inc. 3m @ 5.1% Cu & 1.3 g/t Au from 277m.

This is supported by gravity inversion modelling, which shows the gravity high associated with Turpentine mineralisation to be plunging to the north.

For personal use only

For personal use only

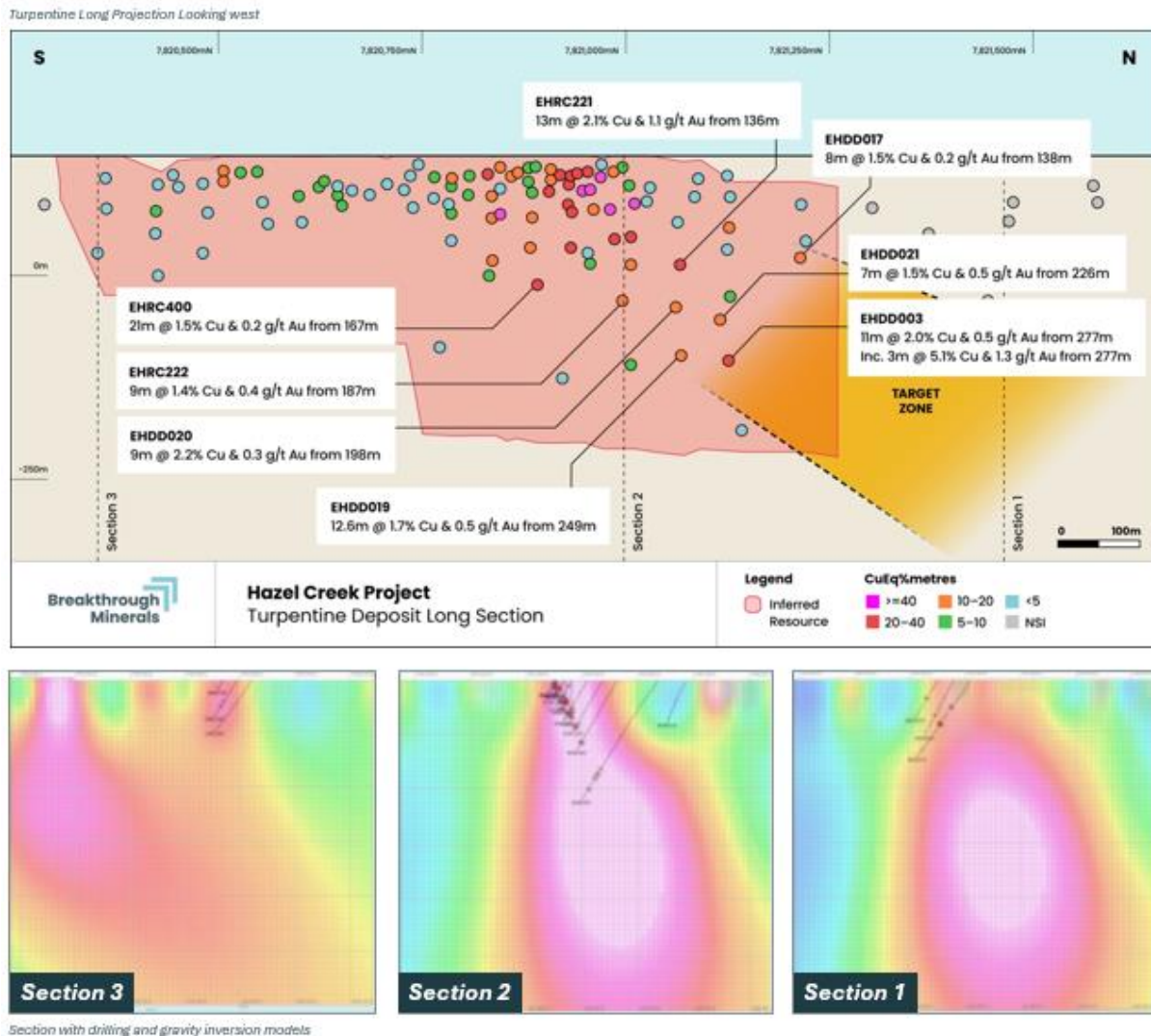


Figure 3: Turpentine Deposit Long Projection showing gravity inversion models

### Hazel Creek Exploration Drilling

Away from the immediate resource, the project has several previously identified prospects that require further work and early-stage exploration targets. These prospects are supported by coincident geophysical anomalies (including electromagnetic (EM) conductors) and geochemical signatures and represent high-priority drill targets.

Away from the main Turpentine Deposit, Hazel Creek hosts significant exploration potential. Breakthrough intends to conduct an RC drill program for initially 2,500m across the project, aimed at:

- Expanding current mineral resources (Turpentine South and Eight Mile Creek North)
- Converting advanced exploration targets into mineral resource estimates (Eight Mile Creek East)
- Discovering new areas of copper and gold mineralisation via untested EM targets and geochemical anomalies that require follow up (SE offset Turpentine; Brumby).

Of the prospects targeted for further drilling in early 2026, the Turpentine South Prospect magnetic high, will be the highest priority due to its proximity to the existing Turpentine Deposit MRE, limited previous drilling (only one hole is drilled to 100m) and geophysical similarities to Turpentine (Figure 4).

Further RC drilling is planned at other exploration prospects, such as Eight Mile Creek East, where numerous intersections remain open at depth or along strike, such as drillhole EHRDD007 intersecting **56m @ 0.66% Cu & 0.19 g/t Au from 36m** (Figure 5).

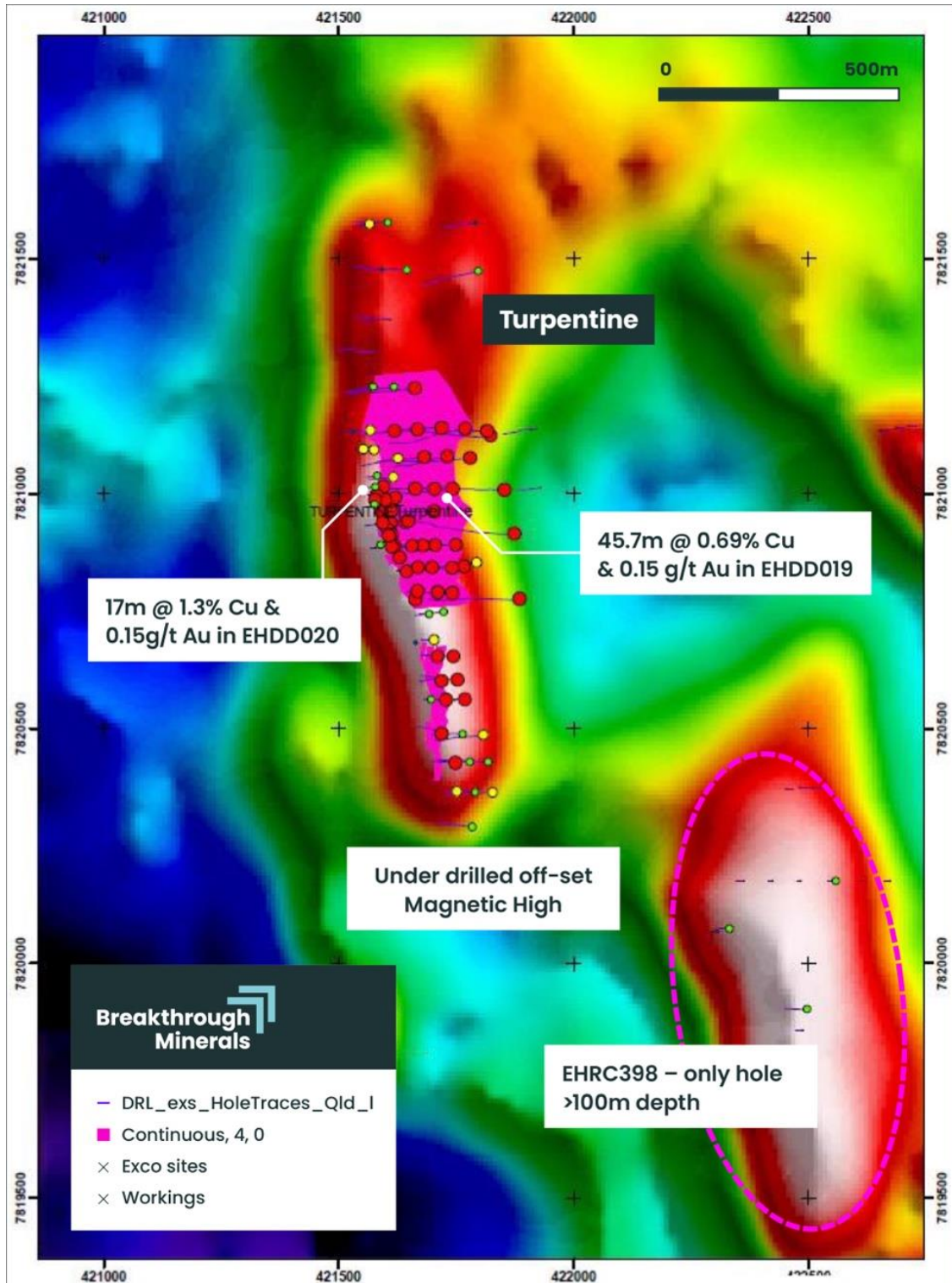


Figure 4: Turpentine South Prospect on TMI magnetics

For personal use only

For personal use only

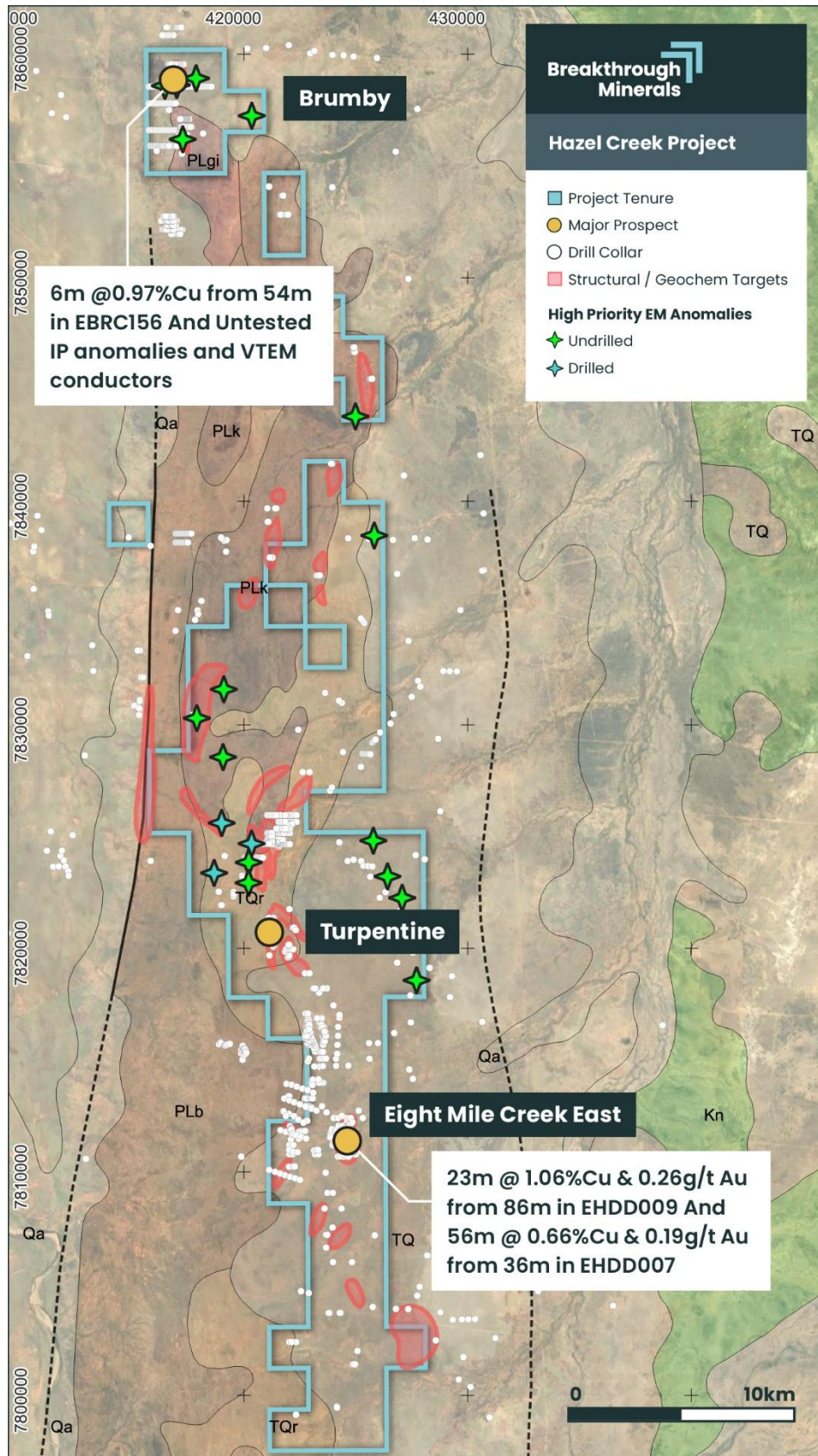


Figure 5: Hazel Creek Project exploration prospects and targets

## Barbara Copper-Gold Project

The Barbara Copper Gold Project is located on granted Mining Lease ML90241, and the project also includes EPM16112. The package hosts the Barbara historic mine as well as the Lillymay Prospect which is at the advanced exploration stage (**Figure 6**).

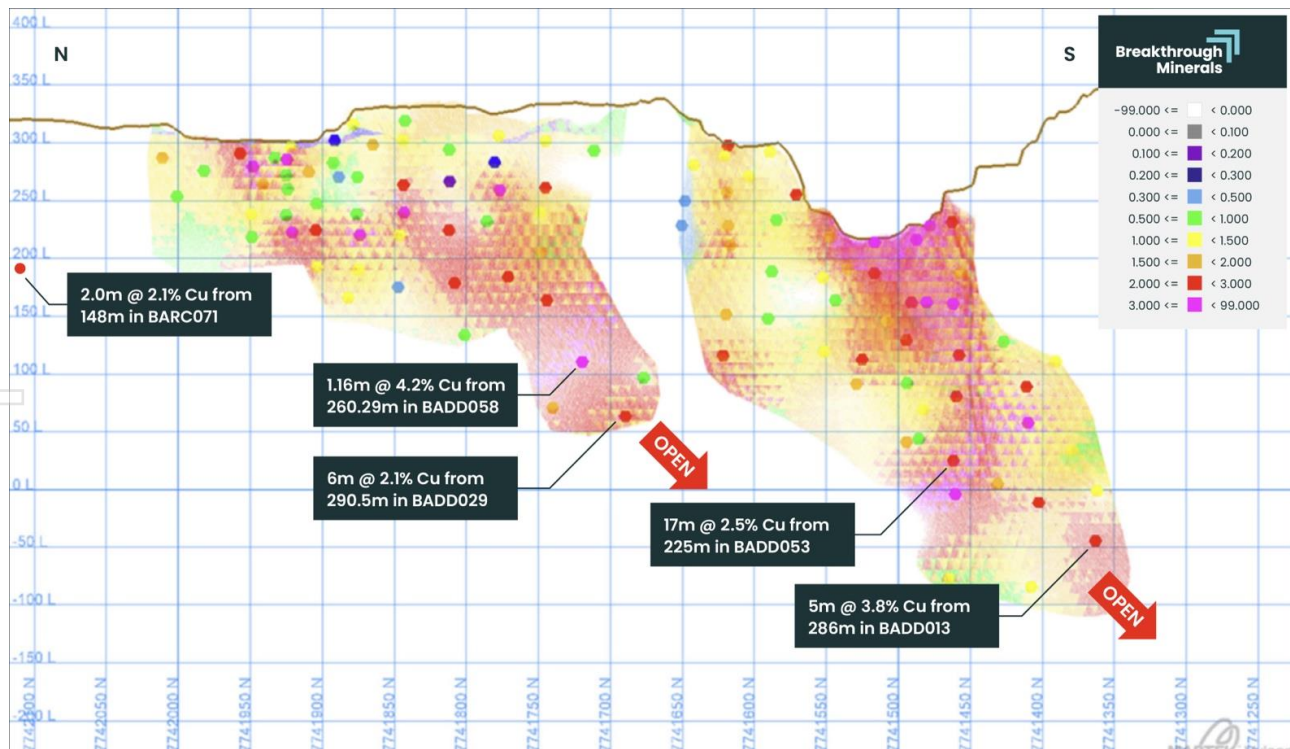
The MRE at Barbara is **6.5Mt @ 0.97% CuEq (0.90% Cu, 0.08g/t Au, 1.57g/t Ag)** and contains **63,000 tonnes of contained CuEq metal** with 5.8Mt in the indicated category and 0.7Mt inferred. The resource is open down plunge and at depth (**Figure 6**).

The immediate focus at Barbara is on resource extension drilling, targeting mineralisation down plunge and along strike to the south-east of the current resource. A number of coincident EM conductors (plates) have been identified in these areas and will form a key component of the initial 2026 drilling program, with drillholes to be supported by downhole EM surveys to refine targeting<sup>3</sup>.

Targets at BCGP include down-plunge extensions below previously reported high-grade intersections, including:

- 17m @ 2.5% Cu from 225m (BADD053)
- 5m @ 3.8% Cu from 286m (BADD013)
- 6m @ 2.1% Cu from 290.5m (BADD029)

Priority target BARC071, an historic hole drilled approximately 100m north of the Barbara North Pit, intersected **2.0m @ 2.1% Cu from 148m (Figure 6)** on the same shear structure that controls mineralisation at Barbara North and South. The intersection remains untested by follow-up drilling and represents a priority target for resource expansion.



**Figure 6:** Barbara MRE long projection looking east with block model grades

<sup>3</sup> ASX Announcement 3 March 2026 – Drilling Targets MRE Growth at Barbara Copper-Gold Project

## Commencement of Drilling – Barbara Copper-Gold Project

Subsequent to the end of the March quarter, Breakthrough commenced drilling operations at the Barbara Copper-Gold Project. The initial diamond drilling program is targeting down-plunge extensions of the existing resource below previously reported high-grade intersections, as well as testing coincident electromagnetic conductors identified along strike to the south-east of the current resource envelope. The commencement of drilling at Barbara represents a significant milestone for the Company and marks the beginning of what Breakthrough believes will be a transformative period of resource growth and new discovery across the NQCG Project.

## Barbara Project - Lillymay Prospect, Exploration Drilling

At the Lillymay Prospect, where mineralisation is open along strike to the east and down dip, historic hole LMRC001 returned **3m @ 7.41 % Cu from 106m** and requires additional drilling both further east and at depth (**Figure 7**).

There are several untested EM plates at Lillymay, in addition to a potential offset which potentially displaces mineralisation to the south. The Company considers these priority areas for follow-up drilling.

Additionally, there is little exploration at the North Gossan Prospect which requires further geological interpretation and geophysical review as part of the broader testing program.

The Company intends to drill the Lillymay Prospect as part of a broader exploration drilling program. This wider program encompasses ~4,500m of DD and is planned to commence subsequent to the DD program at the Barbara Project.

For personal use only

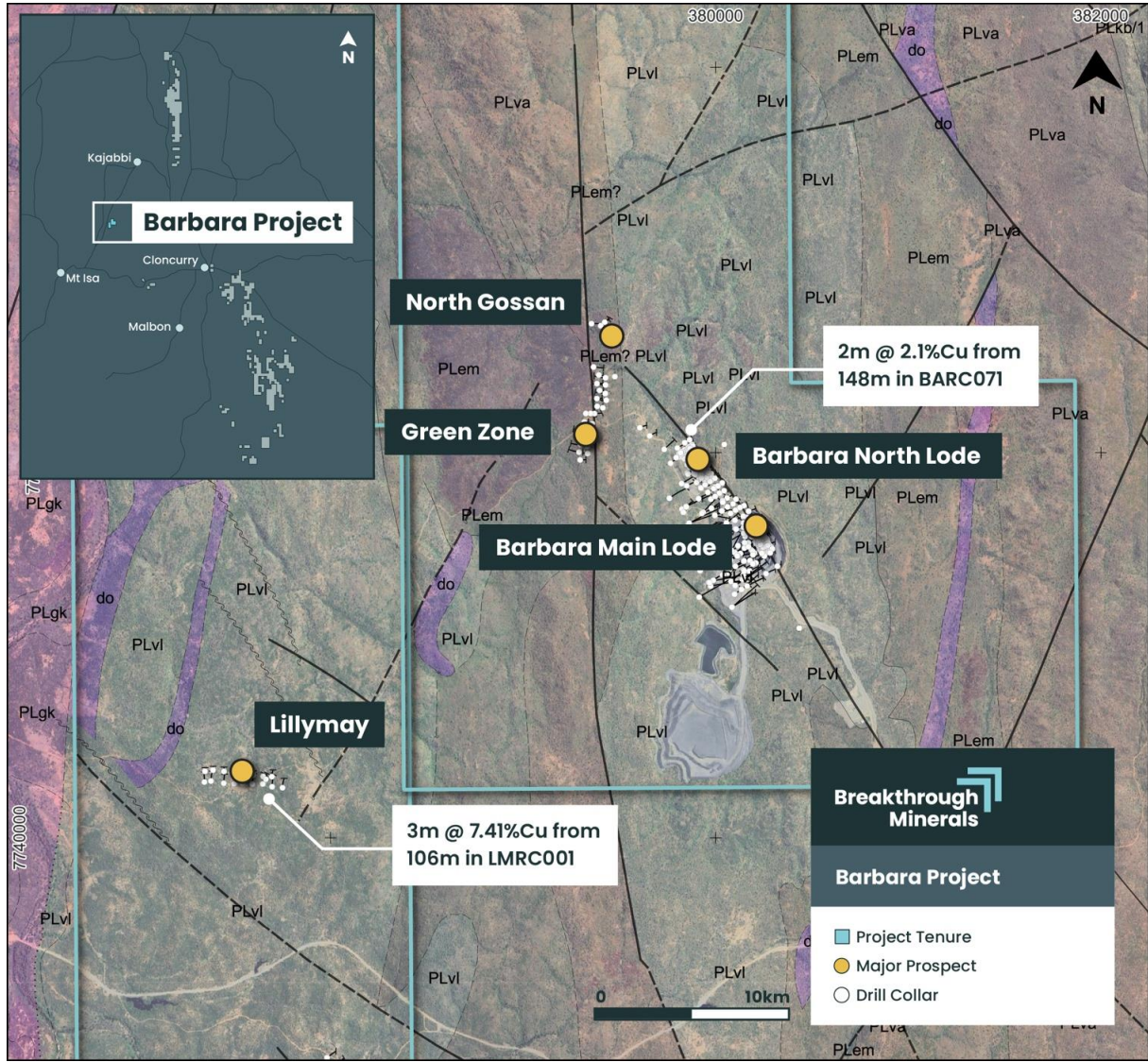


Figure 7: Barbara Mine area with exploration prospects on geology

## Soldiers Cap and Cloncurry Projects

The Soldiers Cap and Cloncurry Projects are located to the south and south-east of Cloncurry township (Figure 8). The projects contain both Cu-Au and Cannington style Zn-Pb-Ag targets. Both projects are geologically located in the Eastern Succession of the Mt Isa Block.

Some of the more advanced exploration opportunities within the NQCG project are found at Canteen and Victory (Cloncurry Project) and at the Strathfield Prospect (Soldiers Cap Project). It is expected that all of these prospects are further advanced during the 2026 drilling season.

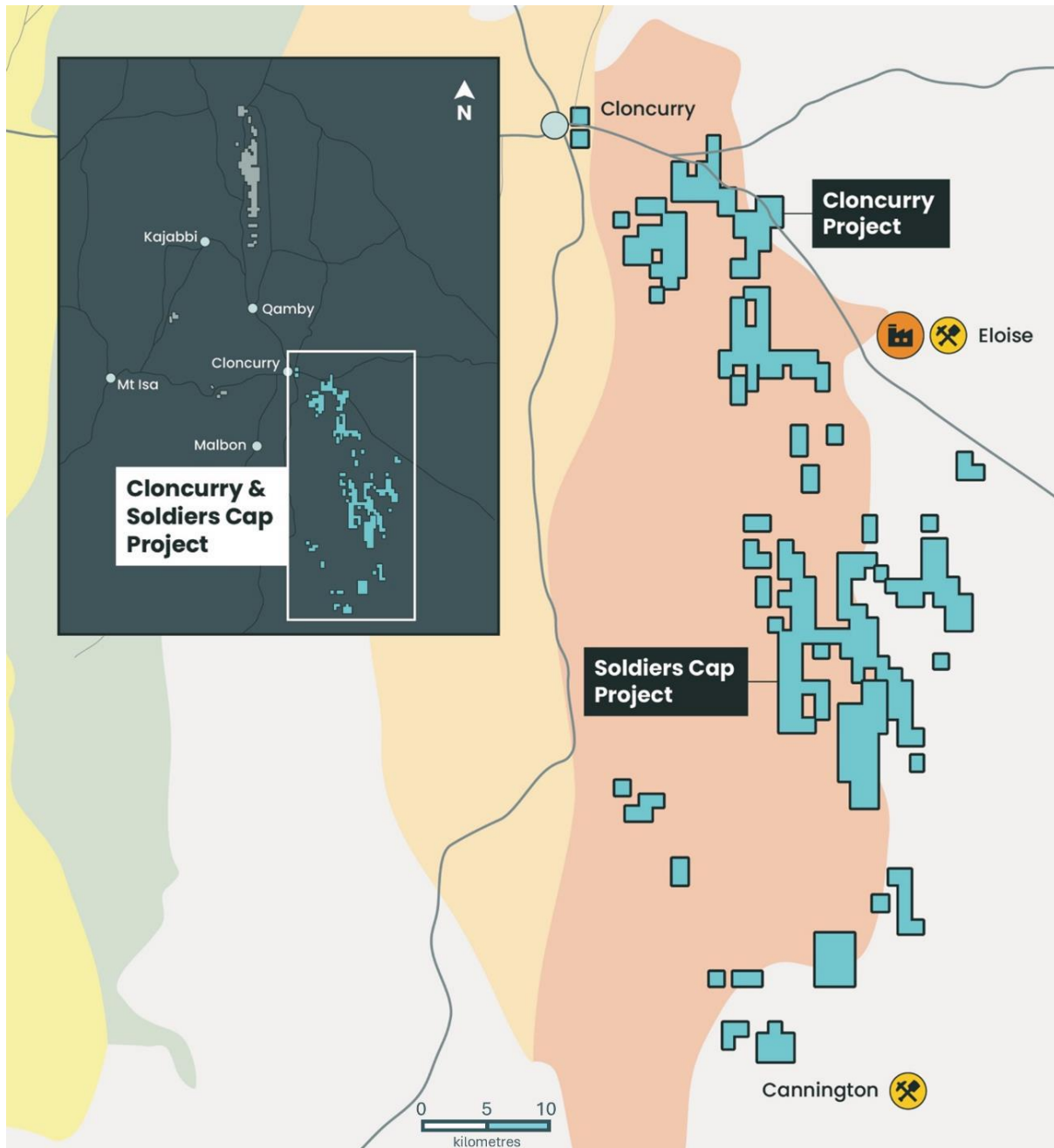


Figure 8: Cloncurry and Soldiers Cap Project locations

At the Cloncurry Project a number of copper-gold prospects immediately north of the Canteen Prospect remain partially tested which the Company intends to follow up.

In addition, at the Victory Prospect, drilling returned **15m @ 9.1 g/t Au and 1.3% Cu** from 6m in VFRC018. Further work is required to follow up this drilling and determine the opportunity that exists as exploration programs are developed over the next 2-3 months.

At Soldiers Cap the Strathfield Prospect hosts Cu-Au mineralisation within graphitic black shale at or very near the contact with mafic rocks and has been mapped for over 4 kilometres of strike.

Previous drilling has outlined low grade copper mineralisation with instances of higher grades that appear to be related to fault offsets and dilation zones. Best intersections at Strathfield include **30m @ 1.5% Cu and 0.4g/t Au** from 10m in EXRC040 and **18m @ 1.9% Cu and 0.66g/t Au** from 28m in EXRC411. Several prominent electro magnetic anomalies remain untested in the Strathfield area as well as at the Louise Prospect on the western side of the project.

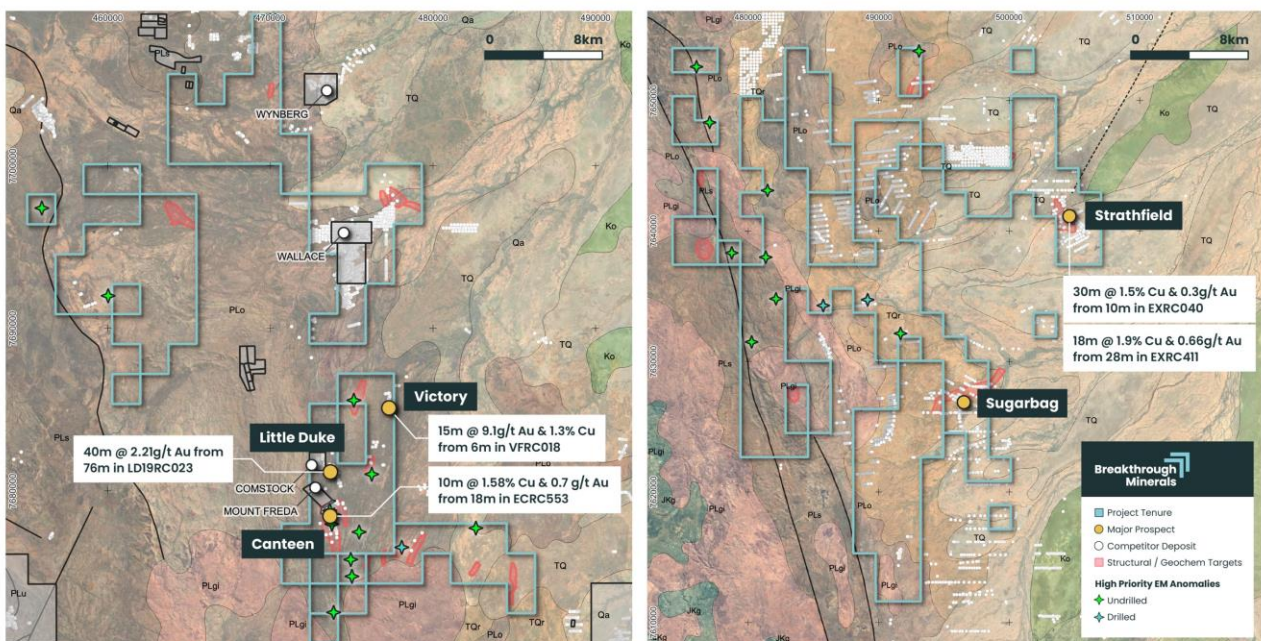


Figure 9: Cloncurry (left) and Soldiers Cap (right) prospects and target locations

## Errolls Gold Project

The Errolls Gold Project is situated within the Barrambie Greenstone Belt which lies midway between Sandstone and Meekatharra in the Murchison region of Western Australia.

The project itself straddles the contact between granite in the west and Archean greenstone in the east. Outcrop over the tenement is poor with only sparse scattered granite outcrops in the west. A major floodway strikes NNW through the tenement along the position of the granite – greenstone contact which is interpreted to be a major shear zone (Youanmi Shear Zone). Mineralised quartz veins outcrop along this sheared contact at the Errolls Mining Centre with the most substantial being Errolls Legacy Prospect. During the Quarter the Company continued to progress the Errolls Gold Project. In particular the Company progressed the heritage arrangements related to the Project.

For personal use only

## Corporate

### Appointment of Managing Director

On 22 January 2026, the Company announced Mr Nigel Broomham as Managing Director<sup>4</sup>, effective 20 March 2026. Mr Broomham is an experienced mining executive and geologist with more than 15 years' experience across exploration, resource development, mining operations and corporate leadership.

Mr Broomham joins Breakthrough Minerals following a successful tenure as Chief Executive Officer of Battery Age Minerals Ltd (ASX:BM8). During this period, he led Battery Age Minerals, through significant growth through exploration, corporate strategy, global project acquisitions and the material expansion of exploration projects across multiple jurisdictions.

### Placement

During the Quarter the Company completed a capital raise of A\$8.15 million (before costs) via a placement of 54,333,333 fully paid ordinary shares (**Shares**) at an issue price of A\$0.15 per new share to new and existing sophisticated and professional investors (**Placement**). Funds raised under the Placement will be used to fund the Consideration exploration and development of the Project, general working capital purposes and costs of the Placement.

### Cash Position

The cash position of ~A\$2.39 million at the end of the quarter. A portion of the funds raised from the Placement were used to fund the acquisition of the North Queensland Cooper-Gold Project and other associated costs.

---

<sup>4</sup> ASX Announcement 22 January 2026 – Breakthrough Minerals Appoints Nigel Broomham as Managing Director

## Disclosures in accordance with ASX Listing Rule 5.3

As at 31 March 2026, the Company has an interest in the following projects:

Table 1: Schedule of Mining and Prospecting Tenements

BTM - Schedule of Mining and Prospecting Tenements						
Tenement ID	Country	Company	% Ownership	Locality	Minerals	Status
EPM 15923	Australia	Dingo	100%	Cloncurry	Copper-Gold	Granted
EPM 16112	Australia	Dingo	100%	Barbara	Copper-Gold	Granted
EPM 16174	Australia	Dingo	100%	Cloncurry	Copper-Gold	Granted
EPM 16737	Australia	Dingo	100%	Cloncurry	Copper-Gold	Granted
EPM 18256	Australia	Dingo	100%	Cloncurry	Copper-Gold	Granted
EPM 26025	Australia	Dingo	100%	Hazel Creek	Copper-Gold	Granted
EPM 27544	Australia	Dingo	100%	Soldiers Cap	Copper-Gold	Granted
ML 2640	Australia	Dingo	100%	Cloncurry	Copper-Gold	Renewal pending
ML 90241	Australia	Dingo	100%	Barbara	Copper-Gold	Granted
E57/996	Australia	BTM	100%	Western Australia	Gold	Granted
CDC 2687313 to 2687316 CDC 2687376 to 2687494 CDC 2743524 to 2743535	Canada	BTM	100%	James Bay Quebec	Lithium	Granted
E09/2990	Australia	BTM	100%	Western Australia	Antimony	Application
ELA6305	Australia	BTM	100%	New South Wales	Gold	Granted

## Summary of Mining Exploration Activities Expenditure

The Company spent ~A\$5,511k on the acquisition of the North Queensland Cooper-Gold Project and ~A\$113k on exploration activities during the quarter. The majority of the cash outflow directed toward the exploration activities as described above in the Quarterly Activities Report.

There were no mining or production activities or expenses incurred during the quarter ending 31 March 2026.

## Related Party Payments

Payments to related parties, which includes directors' fees, salaries and consulting fees during the March Quarter totalled ~A\$124k. Payments to other related parties for exploration consulting services totalled ~A\$99k. Payments to related parties are consistent with Listing Rule 5.3.5 disclosures in prior periods.

## Compliance Statement

The information in this report is extracted from the ASX Announcements listed below which are available on the Company website <https://breakthroughminerals.com.au> and the ASX website (ASX code: BTM):

Date	Announcement Title
30 October 2025	BTM to Acquire Nth Qld Cu-Au Project and Complete Placement
12 December 2025	Results of Meeting
22 January 2026	Breakthrough Minerals Appoints Nigel Broomham as Managing Director
10 February 2026	Initial Drill Planning – Hazel Creek Copper-Gold Project
3 March 2026	Drilling Targets MRE Growth at Barbara Copper-Gold Project
24 March 2026	Grant of Waiver from ASX Listing Rule 14.7
26 March 2026	Completion of Nth Queensland Copper-Gold Project Acquisition

The Company confirms that it is not aware of any new information or data that materially affects the information included in the original market announcements and that all material assumptions and technical parameters underpinning the estimates in the market announcements continue to apply and have not materially changed. The Company confirm that form and context in which the Competent Person's findings are presented have not been materially modified from the original market announcements.

**Authorised for release by the Breakthrough Minerals Limited Board.**

### Enquiries

#### For more information contact:

**Nigel Broomham**  
Managing Director  
Breakthrough Minerals Limited  
[nbroomham@breakthroughminerals.com.au](mailto:nbroomham@breakthroughminerals.com.au)

#### Media or broker enquiries:

**Fiona Marshall**  
White Noise Communications  
[fiona@whitenoisecomms.com](mailto:fiona@whitenoisecomms.com)  
+61 (0) 400 512 109

## Forward Looking Statements

This announcement includes forward-looking statements. These statements relate to the Company's expectations, beliefs, intentions or strategies regarding the future. These statements can be identified by the use of words like "will", "progress", "anticipate", "intend", "expect", "may", "seek", "towards", "enable" and similar words or expressions containing same.

The forward-looking statements reflect the Company's views and assumptions with respect to future events as of the date of this announcement and are subject to a variety of unpredictable risks, uncertainties, and other unknowns. Actual and future results and trends could differ materially from those set forth in such statements due to various factors, many of which are beyond our ability to control or predict. Given these uncertainties, no one should place undue reliance on any forward-looking statements attributable to the Company, or any of its affiliates or persons acting on its behalf. The Company does not undertake any obligation to update or revise any forward-looking statements, whether as a result of new information, future events or otherwise. Neither the Company nor any other person, gives any representation, warranty, assurance, nor will guarantee that the occurrence of the events expressed or implied in any forward-looking statement will actually occur. To the maximum extent permitted by law, the Company and each of its advisors, affiliates, related bodies corporate, directors, officers, partners, employees and agents disclaim any responsibility for the accuracy or completeness of any forward-looking statements whether as a result of new information, future events or results or otherwise.

## Competent Persons Statement Exploration

The information in this announcement that relates to exploration results is based on, and fairly represents, information and supporting documentation compiled by William Dix, who provides technical services to Breakthrough Minerals under a shared services agreement between Breakthrough and Xenora Minerals. Mr Dix is a Director and Shareholder of Breakthrough Minerals. Mr Dix is a Fellow of the Australian Institute of Mining and Metallurgy. Mr Dix has sufficient experience of relevance to the style of mineralisation and the types of deposits under consideration, and to the activities undertaken, to qualify as a Competent Person as defined in the 2012 Edition of the Joint Ore Reserves Committee (JORC) Australasian Code for Reporting of Exploration Results, Mineral Resources and Ore Reserves. Mr Dix consents to the inclusion of the matters based on information in the form and context in which it appears.

## Competent Persons Statement Mineral Resources

The information in this announcement that relates to the estimation and reporting of Mineral Resources at the Mt Colin Cu-Au Gold Projects, is based on information compiled and reviewed by Mr Andrew Fowler who is a Member of the Australian Institute of Mining and Metallurgy (AusIMM). Mr Andrew Fowler was employed at the time by Aeris Resources on a full-time basis. Mr Fowler has sufficient experience which is relevant to the style of mineralisation and type of deposit under

consideration and to the activity which he is undertaking to qualify as a Competent Person as defined in the 2012 Edition of the "Australasian Code for Reporting of Exploration Results, Mineral Resources and Ore Reserves". Mr Fowler consents to the inclusion in this announcement of the matters based on information in the form and context in which it appears.

The information in this announcement that relates to the estimation and reporting of Mineral Resources at the Barbara, Turpentine, Turpentine South & Eight Mile Creek Cu-Au Gold Projects, is based on information compiled and reviewed by Mr Christopher Speedy who is a Member of the Australian Institute of Geoscientists. Mr Christopher Speedy is employed by Encompass Mining on a full-time basis. Mr Speedy has sufficient experience which is relevant to the style of mineralisation and type of deposit under consideration and to the activity which he is undertaking to qualify as a Competent Person as defined in the 2012 Edition of the "Australasian Code for Reporting of Exploration Results, Mineral Resources and Ore Reserves". Mr Speedy consents to the inclusion in this announcement of the matters based on information in the form and context in which it appears.

## Appendix 5B

### Mining exploration entity or oil and gas exploration entity quarterly cash flow report

Name of entity

Breakthrough Minerals Limited

ABN

65 124 408 751

Quarter ended ("current quarter")

31 March 2026

Consolidated statement of cash flows		Current quarter \$A'000	Year to date (9 months) \$A'000
<b>1.</b>	<b>Cash flows from operating activities</b>		
1.1	Receipts from customers	-	-
1.2	Payments for		
	(a) exploration & evaluation	-	-
	(b) development	-	-
	(c) production	-	-
	(d) staff costs	(93)	(222)
	(e) administration and corporate costs	(327)	(576)
1.3	Dividends received (see note 3)	-	-
1.4	Interest received	16	49
1.5	Interest and other costs of finance paid	(550)	(550)
1.6	Income taxes paid	-	-
1.7	Government grants and tax incentives	-	-
1.8	Other (provide details if material)	-	-
<b>1.9</b>	<b>Net cash from / (used in) operating activities</b>	<b>(954)</b>	<b>(1,299)</b>
<b>2.</b>	<b>Cash flows from investing activities</b>		
2.1	Payments to acquire or for:		
	(a) entities	-	-
	(b) tenements <sup>1</sup>	(5,511)	(5,511)
	(c) property, plant and equipment	-	-
	(d) exploration & evaluation	(113)	(519)
	(e) investments	-	-
	(f) other non-current assets	-	-

Consolidated statement of cash flows	Current quarter \$A'000	Year to date (9 months) \$A'000
2.2 Proceeds from the disposal of:		
(a) entities	-	-
(b) tenements	-	-
(c) property, plant and equipment	-	-
(d) investments	-	-
(e) other non-current assets	-	-
2.3 Cash flows from loans to other entities	-	-
2.4 Dividends received (see note 3)	-	-
2.5 Other (provide details if material)	-	-
<b>2.6 Net cash from / (used in) investing activities</b>	<b>(5,624)</b>	<b>(6,030)</b>

<sup>1</sup> Includes acquisition costs for the purchase of the North Queensland Copper Gold Project completed during the quarter.

<b>3. Cash flows from financing activities</b>		
3.1 Proceeds from issues of equity securities (excluding convertible debt securities)	8,086	8,124
3.2 Proceeds from issue of convertible debt securities	-	-
3.3 Proceeds from exercise of options	-	-
3.4 Transaction costs related to issues of equity securities or convertible debt securities	(473)	(497)
3.5 Proceeds from borrowings	-	-
3.6 Repayment of borrowings	-	-
3.7 Transaction costs related to loans and borrowings	-	-
3.8 Dividends paid	-	-
3.9 Other (provide details if material)	-	-
<b>3.10 Net cash from / (used in) financing activities</b>	<b>7,613</b>	<b>7,627</b>

For personal use only

## Mining exploration entity or oil and gas exploration entity quarterly cash flow report

<b>Consolidated statement of cash flows</b>		<b>Current quarter \$A'000</b>	<b>Year to date (9 months) \$A'000</b>
<b>4.</b>	<b>Net increase / (decrease) in cash and cash equivalents for the period</b>		
4.1	Cash and cash equivalents at beginning of period	1,362	2,099
4.2	Net cash from / (used in) operating activities (item 1.9 above)	(954)	(1,299)
4.3	Net cash from / (used in) investing activities (item 2.6 above)	(5,624)	(6,030)
4.4	Net cash from / (used in) financing activities (item 3.10 above)	7,613	7,627
4.5	Effect of movement in exchange rates on cash held	-	-
<b>4.6</b>	<b>Cash and cash equivalents at end of period</b>	<b>2,397</b>	<b>2,397</b>

<b>5.</b>	<b>Reconciliation of cash and cash equivalents</b> at the end of the quarter (as shown in the consolidated statement of cash flows) to the related items in the accounts	<b>Current quarter \$A'000</b>	<b>Previous quarter \$A'000</b>
5.1	Bank balances	1,647	1,362
5.2	Call deposits	750	-
5.3	Bank overdrafts	-	-
5.4	Other (provide details)	-	-
<b>5.5</b>	<b>Cash and cash equivalents at end of quarter (should equal item 4.6 above)</b>	<b>2,397</b>	<b>1,362</b>

<b>6.</b>	<b>Payments to related parties of the entity and their associates</b>	<b>Current quarter \$A'000</b>
6.1	Aggregate amount of payments to related parties and their associates included in item 1	124
6.2	Aggregate amount of payments to related parties and their associates included in item 2	99

*Note: if any amounts are shown in items 6.1 or 6.2, your quarterly activity report must include a description of, and an explanation for, such payments.*

Payments of \$124k for Director fees and superannuation.

Payments of \$99k for consulting expenses on exploration projects.

## Mining exploration entity or oil and gas exploration entity quarterly cash flow report

<b>7. Financing facilities</b>	<b>Total facility amount at quarter end \$A'000</b>	<b>Amount drawn at quarter end \$A'000</b>
<i>Note: the term "facility" includes all forms of financing arrangements available to the entity.</i>		
<i>Add notes as necessary for an understanding of the sources of finance available to the entity.</i>		
7.1	-	-
7.2	-	-
7.3	-	-
7.4	-	-
<b>7.5</b>	<b>Unused financing facilities available at quarter end</b>	
		-
7.6	Include in the box below a description of each facility above, including the lender, interest rate, maturity date and whether it is secured or unsecured. If any additional financing facilities have been entered into or are proposed to be entered into after quarter end, include a note providing details of those facilities as well.	
	N/a	

<b>8. Estimated cash available for future operating activities</b>	<b>\$A'000</b>
8.1	(954)
8.2	(113)
8.3	(1,067)
8.4	2,397
8.5	-
8.6	2,397
8.7	2.25
<i>Note: if the entity has reported positive relevant outgoings (ie a net cash inflow) in item 8.3, answer item 8.7 as "N/A". Otherwise, a figure for the estimated quarters of funding available must be included in item 8.7.</i>	
8.8	If item 8.7 is less than 2 quarters, please provide answers to the following questions:
8.8.1	Does the entity expect that it will continue to have the current level of net operating cash flows for the time being and, if not, why not?
	N/A
8.8.2	Has the entity taken any steps, or does it propose to take any steps, to raise further cash to fund its operations and, if so, what are those steps and how likely does it believe that they will be successful?
	N/A
8.8.3	Does the entity expect to be able to continue its operations and to meet its business objectives and, if so, on what basis?
	N/A
<i>Note: where item 8.7 is less than 2 quarters, all of questions 8.8.1, 8.8.2 and 8.8.3 above must be answered.</i>	

**Compliance statement**

- 1 This statement has been prepared in accordance with accounting standards and policies which comply with Listing Rule 19.11A.
- 2 This statement gives a true and fair view of the matters disclosed.

Date: 30 April 2026

Authorised by: .....Board of Directors.....  
(Name of body or officer authorising release – see note 4)

**Notes**

1. This quarterly cash flow report and the accompanying activity report provide a basis for informing the market about the entity's activities for the past quarter, how they have been financed and the effect this has had on its cash position. An entity that wishes to disclose additional information over and above the minimum required under the Listing Rules is encouraged to do so.
2. If this quarterly cash flow report has been prepared in accordance with Australian Accounting Standards, the definitions in, and provisions of, *AASB 6: Exploration for and Evaluation of Mineral Resources* and *AASB 107: Statement of Cash Flows* apply to this report. If this quarterly cash flow report has been prepared in accordance with other accounting standards agreed by ASX pursuant to Listing Rule 19.11A, the corresponding equivalent standards apply to this report.
3. Dividends received may be classified either as cash flows from operating activities or cash flows from investing activities, depending on the accounting policy of the entity.
4. If this report has been authorised for release to the market by your board of directors, you can insert here: "By the board". If it has been authorised for release to the market by a committee of your board of directors, you can insert here: "By the [name of board committee – eg Audit and Risk Committee]". If it has been authorised for release to the market by a disclosure committee, you can insert here: "By the Disclosure Committee".
5. If this report has been authorised for release to the market by your board of directors and you wish to hold yourself out as complying with recommendation 4.2 of the ASX Corporate Governance Council's *Corporate Governance Principles and Recommendations*, the board should have received a declaration from its CEO and CFO that, in their opinion, the financial records of the entity have been properly maintained, that this report complies with the appropriate accounting standards and gives a true and fair view of the cash flows of the entity, and that their opinion has been formed on the basis of a sound system of risk management and internal control which is operating effectively.