

**PACGOLD**

# Unlocking the Broken Hill Gold District

Establishing a dominant position in one of Australia's  
most historically significant mining regions

ASX: **PGO**  
[pacgold.com.au](http://pacgold.com.au)

RIU  
**Sydney**  
Resources  
Round-up



# Disclaimer

## PURPOSE OF THIS DOCUMENT

This presentation has been prepared by Pacgold Limited ("PGO") for general information purposes only using the information available to PGO at the time of publication. This presentation does not purport to be all-inclusive or to contain all the information that you or any other party may require to evaluate the prospects of PGO.

## NO RELIANCE

The information contained in this presentation is not investment, tax, accounting, legal or financial product advice and is not intended to be used as the basis for making any investment decision. The presentation has been prepared without taking into account the investment objectives, financial situation or particular needs of any particular person. To the fullest extent permitted by law, PGO, its related bodies corporate and their representatives expressly disclaim liability for any loss or damage arising in respect of your reliance on the information contained in this presentation (including your reliance on the accuracy, completeness or reliability of that information), or any errors in or omissions from this presentation, including any liability arising from negligence.

## EXCLUSION OF REPRESENTATIONS OR WARRANTIES

No representation or warranty, express or implied, is made as to the fairness, accuracy, completeness or correctness of the information, opinions and conclusions contained in this presentation. To the maximum extent permitted by law, none of PGO's directors, employees or agents, nor any other person accepts any liability, including, without limitation, any liability arising out of fault or negligence, for any loss arising from the use of the information contained in this presentation. In particular, no representation or warranty, express or implied is given as to the accuracy, completeness or correctness, likelihood of achievement or reasonableness of any forecasts, prospects or returns contained in this presentation nor is any obligation assumed to update such information. Such forecasts, prospects or returns are by their nature subject to significant uncertainties and contingencies. Before making any investment decision, you should consider whether an investment is appropriate in light of your particular investment needs, objectives and financial circumstances. Past performance is no guarantee of future performance. You should seek professional advice from your accountant, financial adviser, stockbroker, lawyer or other professional adviser before making any investment decision.

## FORWARD LOOKING INFORMATION

Certain statements in this presentation constitute "forward looking information" that is based on expectations, estimates and projections as of the date of this presentation. This forward-looking information includes, among other things, statements with respect to PGO's business strategy, plan, development, objectives, performance, outlook, growth, cash flow, projections, targets and expectations, and exploration results. Generally, this forward-looking information can be identified by the use of forward-looking terminology such as 'outlook', 'anticipate', 'project', 'target', 'likely', 'believe', 'estimate', 'expect', 'intend', 'may', 'would', 'could', 'should', 'scheduled', 'will', 'plan', 'forecast', 'evolve' and similar expressions. These statements are subject to risks and uncertainties. The forward-looking information should not be relied upon as representing the view of PGO after the date of this presentation. PGO has attempted to identify important factors that could cause actual actions, events or results to differ materially from those current expectations described in the forward-looking information. There can be no assurance that the forward-looking information will prove to be accurate, as actual results and future events could differ materially from those anticipated in such statements. Accordingly, the reader should not place undue reliance on the forward-looking information. PGO disclaims any intent or obligations to or revise any forward-looking statements whether as a result of new information, estimates, or options, future events or results or otherwise, unless required to do so by law.

## ALICE RIVER MAIDEN RESOURCE ESTIMATE

This presentation contains references to the Maiden Alice River project Resource Estimate which has been extracted from PGO's ASX announcement 6th May 2025 "Alice River Project Maiden MRE" PGO confirms that all material assumptions and technical parameters underpinning the mineral resource estimates in the original announcement continue to apply and have not materially changed

## EVENTS AFTER THE DATE OF THIS DOCUMENT

Statements in this presentation are made only as of the date of this presentation unless otherwise stated and the information in this presentation remains subject to change without notice. PGO is not responsible for updating nor undertakes to update this presentation.

## NO NEW EXPLORATION INFORMATION

Pacgold confirms that it is not aware of any new information or data that materially affects the information included in the original announcements.

## COMPETENT PERSONS STATEMENT

The information in this document that relates to Exploration Results is based on, and fairly represents, information compiled or reviewed by Mr Geoff Lowe, who is a Member of The Australian Institute of Mining and Metallurgy. Mr Lowe is PGO's Exploration Manager and holds shares and options in PGO. Mr Lowe has sufficient experience which is relevant to the style of mineralisation and type of deposit under consideration and to the activity which he is undertaking to qualify as a Competent Person as defined in the 2012 Edition of the 'Australasian Code for Reporting of Exploration Results, Mineral Resources and Ore Reserves'. Mr Lowe consents to the inclusion in the public report of the matters based on his information in the form and context in which it applies. The information in this presentation that relates to estimation and reporting of Mineral Resources for the Alice River Gold Project is based on information compiled by Mr Brian Fitzpatrick. Mr Fitzpatrick is a member of the Australasian Institute of Mining and Metallurgy and has sufficient experience which is relevant to the style of mineralisation and type of deposit under consideration and to the activity which he is undertaking to qualify as a Competent Person (CP) as defined in the 2012 Edition of the Australian Code for Reporting of Exploration Results, Mineral Resources and Ore Reserves (the JORC Code). Mr Fitzpatrick is a full time employee of Cube Consulting Pty Ltd, which specialises in mineral resource estimation, evaluation and exploration. Neither Mr Fitzpatrick nor Cube Consulting Pty Ltd holds any interest in Pacgold, its related parties, or in any of the mineral properties that are the subject of this announcement. Mr Fitzpatrick consents to the inclusion in this announcement of all technical statements based on his information in the form and context in which it appears. The information in this presentation that relates to estimation and reporting of Mineral Resources for the White Dam Project was released by the Company on 6 October 2025. The Company confirms that it is not aware of any new information or data that materially affects the information in the original announcement, and that the technical parameters and material assumptions underpinning the Mineral Resource continue to apply and have not materially changed.

# Corporate Overview

**\$0.12**

Share Price  
(as at 01/05/2026)

**432.9m**

Shares on Issue

**\$50m**

Market Capitalisation

**\$44m**

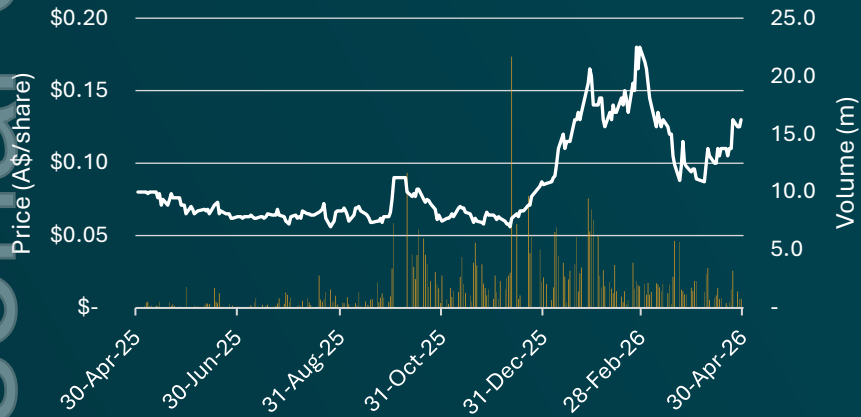
Enterprise Value

**102.6m**

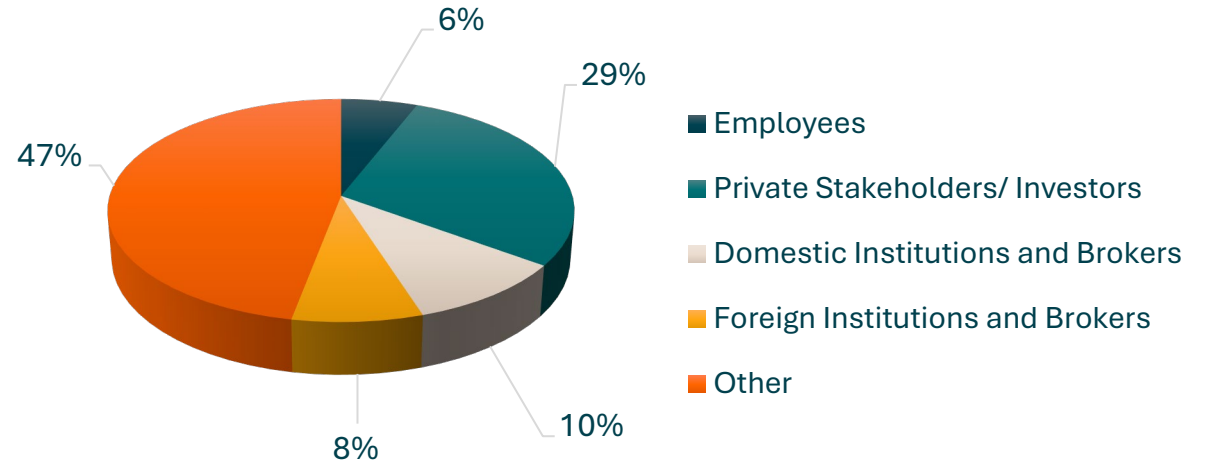
Options  
(Avg exercise price of \$0.13)

**\$6.0m**

Cash Balance



## Shareholders



## Institutional Shareholders



# Board and Management



**Caoilin Chestnutt**  
*Non-Executive Chair*

A geologist by profession, Caoilin Chestnutt has spent almost 30 years in the resources industry leading global technical and transactional teams with strong experience in discovery, strategy, mergers and acquisition and deal structuring across multiple commodities.

Her prior roles include Head of BD at BHP and Exploration Manager at Arrow Energy and Xstrata.

Caoilin is the Deputy Chair of Critical Minerals at the Queensland Exploration Council.



**Matthew Boyes**  
*Managing Director*

Matthew Boyes is an experienced Geologist and Managing Director, with over twenty-eight years' international experience encompassing company management, mine geology, mine development including successfully designing permitting and building 2 standalone heap leach operations, capital markets and business development.

Matthew has managed successful exploration teams across WA, London, the US, Brazil and Argentina.



**Michael Pitt**  
*Non-Executive Director*

Michael Pitt is an experienced mining executive, having previously co-founded New Century Resources (ASX: NCZ), held the position of VP Business Development with Sibanye-Stillwater (JSX:SSW), and multiple years in strategic roles within BHP.

He is currently the Head of Development for Broken Hill Mines (ASX:BHM), who owns the RASP Ag-Pb-Zn mine in Broken Hill and is re-developing the nearby, high-grade Pinnacles Ag-Pb-Zn mine from recent C&M



**Richard Hacker**  
*Non-Executive Director*

Richard Hacker is an experienced mining and corporate finance executive, having been a key member of the Chalice Mining Limited (ASX:CHN) executive team and board member over the last 20 years.

He has played key roles as an executive or director in other leading exploration and development companies, including Liontown Resources (ASX: LTR) and DevEx Resources (ASX: DEV).



**Bruce Kendall**  
*Non-Executive Director*

Bruce Kendall has over 30 years' experience in managing mineral exploration from grass roots through to advanced brownfields projects, near mine exploration, resource definition and feasibility studies as well as holding corporate management roles with companies such as AngloGold Ashanti, Independence Group, Jabiru Metals and Chalice Mining.

He played key roles in several discoveries including the world-class Tropicana gold deposit for which he was the joint recipient of AMEC's Prospector of the Year Award in 2012, the Julimar PGE-Ni-Cu deposit and the Coyote Gold Deposit.

ersonal use only

# White Dam: Production Restarted and Historical Performance

## First PACGOLD Pour with plenty more to come

- PGO First pour 29<sup>th</sup> April 2026
- White Dam delivered **180koz gold** from 2010-2018 at low sub-A\$1000/oz cash costs

**Proven economic viability** and operational efficiency in this geological setting

First Gold poured and plant fully operational **increasing Production with proven metallurgy**

## Outstanding Value, Timing & Execution

**\$50M+**

### Infrastructure Value:

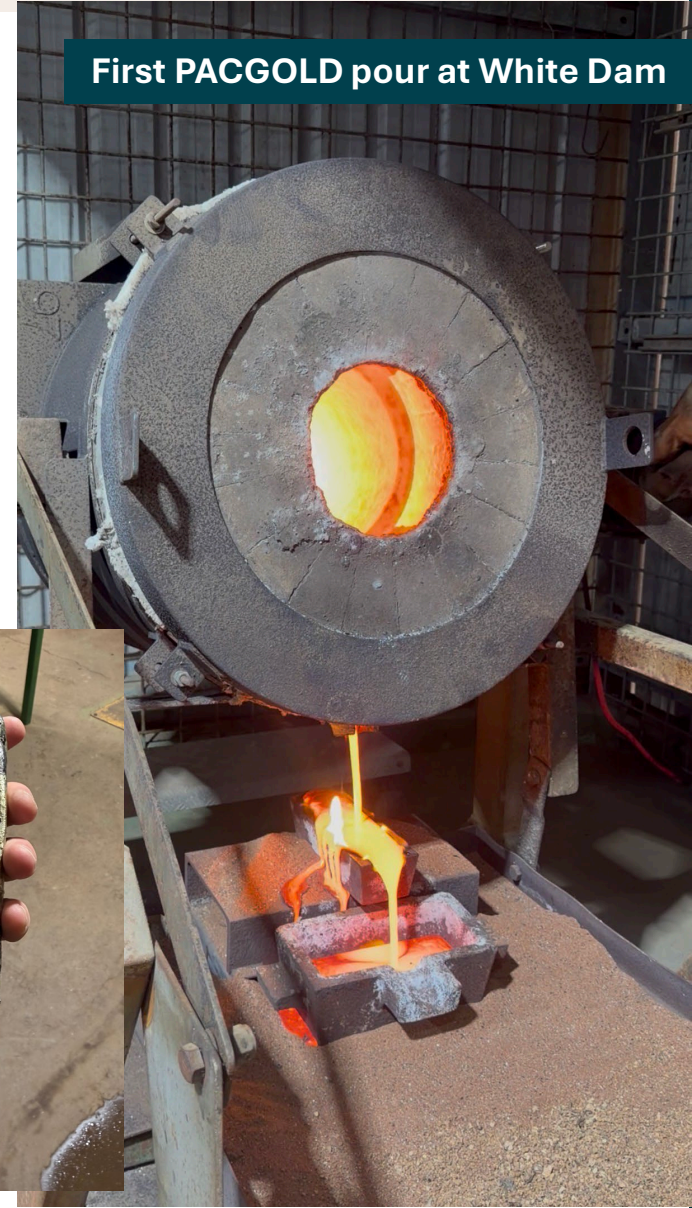
Replacement value of fully permitted processing facility, camp, and supporting infrastructure, not counting considerable exploration spend and database value

**\$4.3M**

### Total Consideration:

\$2.1M in cash and shares  
A further deferred payment of \$2.2M upon 5,000oz production

First PACGOLD pour at White Dam



# White Dam: Fully Permitted Plant-De-risked & Refurbished

## Operational Continuity

- Retained core team of veteran staff
- Intimate knowledge of White Dam system ensures seamless restart
- MD has overseen construction and operation of 2 separate heap leach operations

## Existing HL Infrastructure

- Plant and Heap Leach Pad processing infrastructure now refurbished and operational
- Plant now operating at 90% throughput capacity
- HL Pad ready for additional fresh ore in 2027

## Proof of Concept

- First gold pour achieved 29/04/2026
- Transitioning to gold producer
- Ramping up
- Validates business model and de-risks expansion



Fully operational Refurbished plant

# Low Risk Three-Phase Growth Strategy

A disciplined, sequential **Debt Free** approach to **restarting full scale production** while **managing capital risk** and **validating the technical model** at each stage.

## Phase 1.

### Heap Leach Pad Re-treatment

- Immediate proof of concept utilising existing material.
- Re-crush commenced and now nearing target of 3000tpd
- First pour completed, first non dilutional cashflow now generated for shareholders, leaching continues uninterrupted
- First re-crushed material under irrigation return expected to register in late May

## Phase 2.

### Upgrading of existing 100koz Au resources-restart

- Vertigo pit MRE drilling completed, circa 12,000m of RC, final assays close
- Out to tender for resource estimate upgrade, mine design and cashflow modelling, expected late June
- Hannaford, White Dam North, Rolling MRE drilling to restart as soon as diesel prices normalise
- Full mine restart and sustained production from existing resources

## Phase 3.

### District-Scale Exploration - Regional Consolidation

- Wadnaminga, Wilkins, Mary Mine, Green and Gold Prospects drilling to commence once PEPR's approved
- Strategy to acquire "low hanging fruit" - stranded assets within trucking distance of White Dam.
- Systematic exploration of underexplored targets across the broader Broken Hill gold district including Manna Hill tenements



Pad showing recently aerated and 1<sup>st</sup> Re-crushed Ore sections under irrigation

# Update and increasing resources: *Phase 2 JORC Resources*

01

## Resource Definition

Comprehensive quantification of contained gold in existing Heap Leach Pad, first pass Sonic programme completed

Resource assessment and upgrades due late 2026, guidance on production post evaluation of first 2-3 parcels of re-crushed ore

02

## JORC Compliance

Update and grow existing JORC-compliant Resources for remaining in-situ mineralisation,

Creating the foundation for long-term mine planning and Reserve declarations.

03

## Mine Restart-Cash Generation

Initially aiming to delineate mineable inventory of 3-5 years with production of 17-20koz's per annum while continuing with exploration and regional expansion.

PACGOLD is transforming from a **capital-intensive explorer into a cash-generative producer** with the financial flexibility to pursue aggressive district consolidation without shareholder dilution.

ersonal use only

# Exploration Upside: Phase 3 SA and QLD, build resources

ersonal use only

01

## Near Mine exploration, SA

- Multiple near mine targets within 15km of White Dam hub
- To be drilled in 2026 once existing Resource drill outs completed and permits received

02

## Regional Targets, SA

- 900km<sup>2</sup> of very prospective underexplored exploration tenements
- All within trucking distance of the White Dam hub
- Regional opportunities continuously evaluated

03

## Alice River and St George, QLD

- 30km of mineralised strike and an existing 850koz gold Resource at Alice River, huge upside potential
- 900km<sup>2</sup> tenure in Australia's best Sb-Au province with multiple targets to follow up in 2026, only Pacgold has ever systematically explored the area



# Global Vision: Junior Explorer to Self Funded District Producer

**PACGOLD** represents a fundamental departure from the traditional junior mining model

Low-cost acquisition of fully permitted critical infrastructure coupled with specialised technical expertise

Positioned to execute a district consolidation strategy that creates compounding value

## Immediate Value Creation

- \$50M+ infrastructure for \$4.3M
- Creates instant asset value
- Eliminates permitting and construction timelines, expertise in place

## Near-Term Catalyst

- Operating producer by Q2 2026
- Transforms company valuation metrics
- Established cashflow

## De-Risked Restart

- Re-commissioned plant with trained veteran staff retained
- Operational continuity reduces restart risk
- Accelerates path to full production

## District Dominance

- Transitioning to a cash-generating producer
- Dominant district-scale land position
- A platform for systematic consolidation and exploration

Combining **proven infrastructure, specialised technical expertise, and a disciplined growth strategy** positions PACGOLD to capture exceptional value as the Broken Hill district's consolidator and premier gold producer.

# Alice River Gold Project Overview

ersonal use only



The Alice River Gold Project comprises >30km of strike of prospective gold targets within **377km<sup>2</sup> of granted exploration permits** and eight granted mining leases.



Alice River is an **intrusive related gold system** these systems are large and produce long life multi million ounce mines



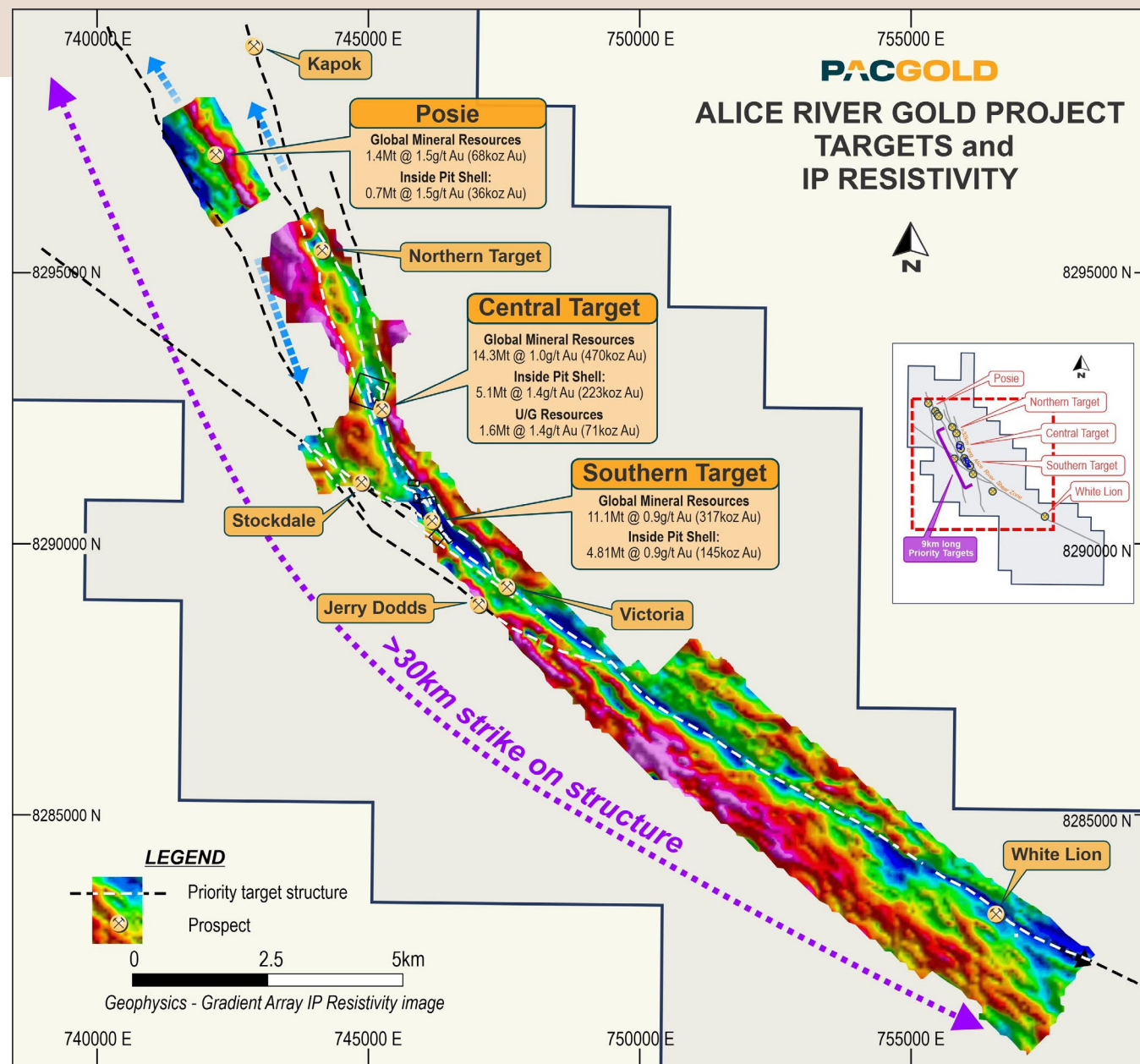
The project has **excellent associated infrastructure**, including an airstrip, camp, offices and sealed roads to within 100km of the project.



Pacgold has defined a **maiden Mineral Resource Estimate** and in preparation to recommence exploration season in Q2 2026

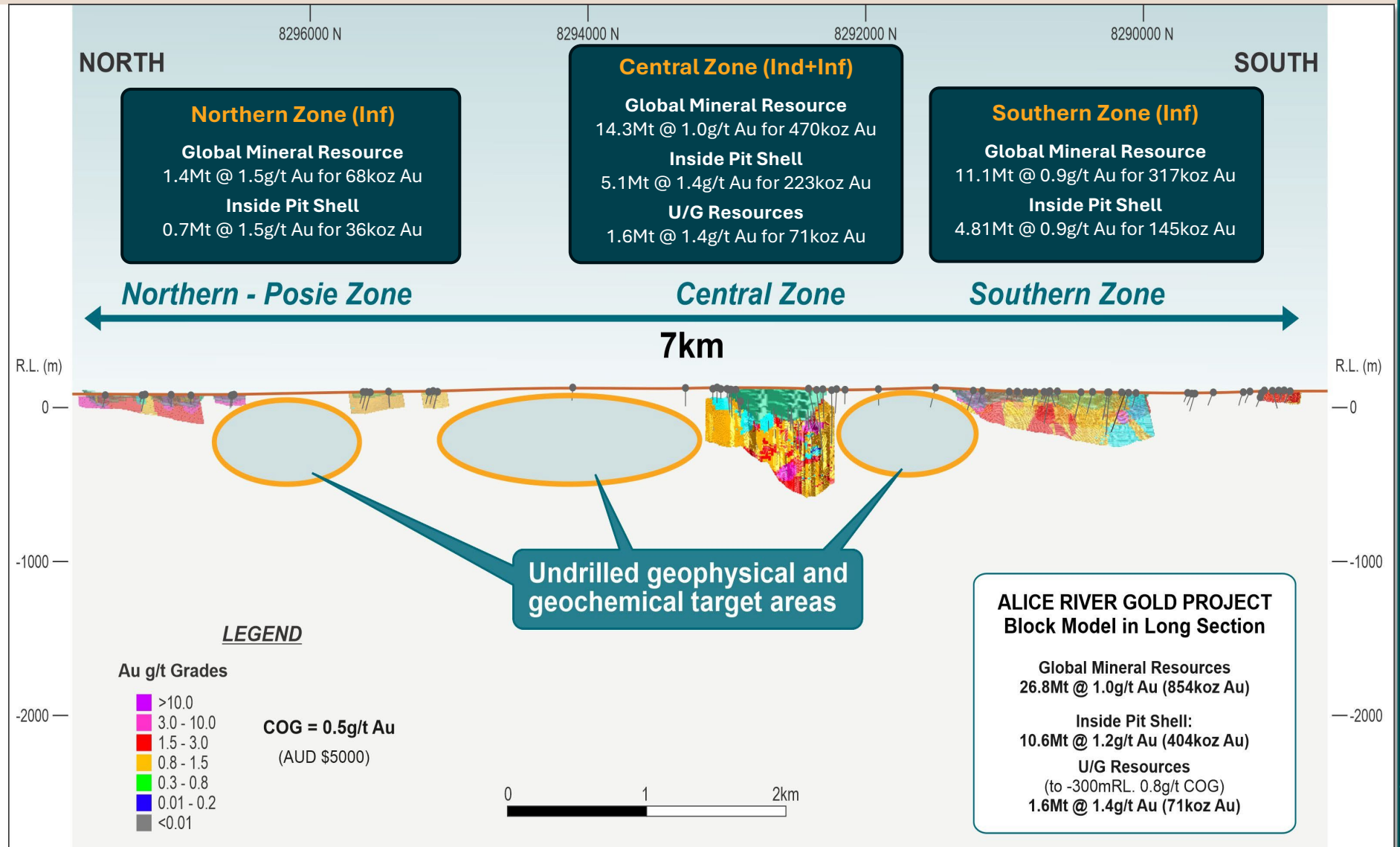
# Alice River Gold Project – Strong Foundation Established

- District scale gold province in Northern Queensland
- PGO was the first explorer to drill for 20 years along the Alice River Fault Structure, 4 years experience and development now delivering
- >30km of known mineralised structural trend identified to date with 377km<sup>2</sup> of mining and exploration licences under management
- Less than 10% of total strike drill tested to date, only 38,000m of drilling completed to date
- Maiden MRE in 2025 with demonstrated upside potential
- Bulk tonnage IRGS support very profitable long-life operations, company making assets
- Exploration planned to recommence in June 2026



# Maiden MRE demonstrates compelling upside

- Massive upside potential with multiple areas for obvious resource expansion
- Systematic growth through consistent expenditure and drilling of now well understood geochemical and geophysical anomalies and existing resources
- 8 granted mining leases = fast track to production



# St George Gold-Antimony Project Overview

ersonal use only



Multiple **high-grade Gold & Antimony targets** with extremely high-grade Antimony in rock chips & first pass exploration commencing immediately



Historical artisanal open cut production of **60T at 60% Antimony<sup>1</sup>** & no prior systematic exploration across the project



Located near Pacgold's flagship Alice River Gold Project and **excellent associated infrastructure**



Pacgold has a right to earn & acquire **up to 100% interest** in the project over three stages

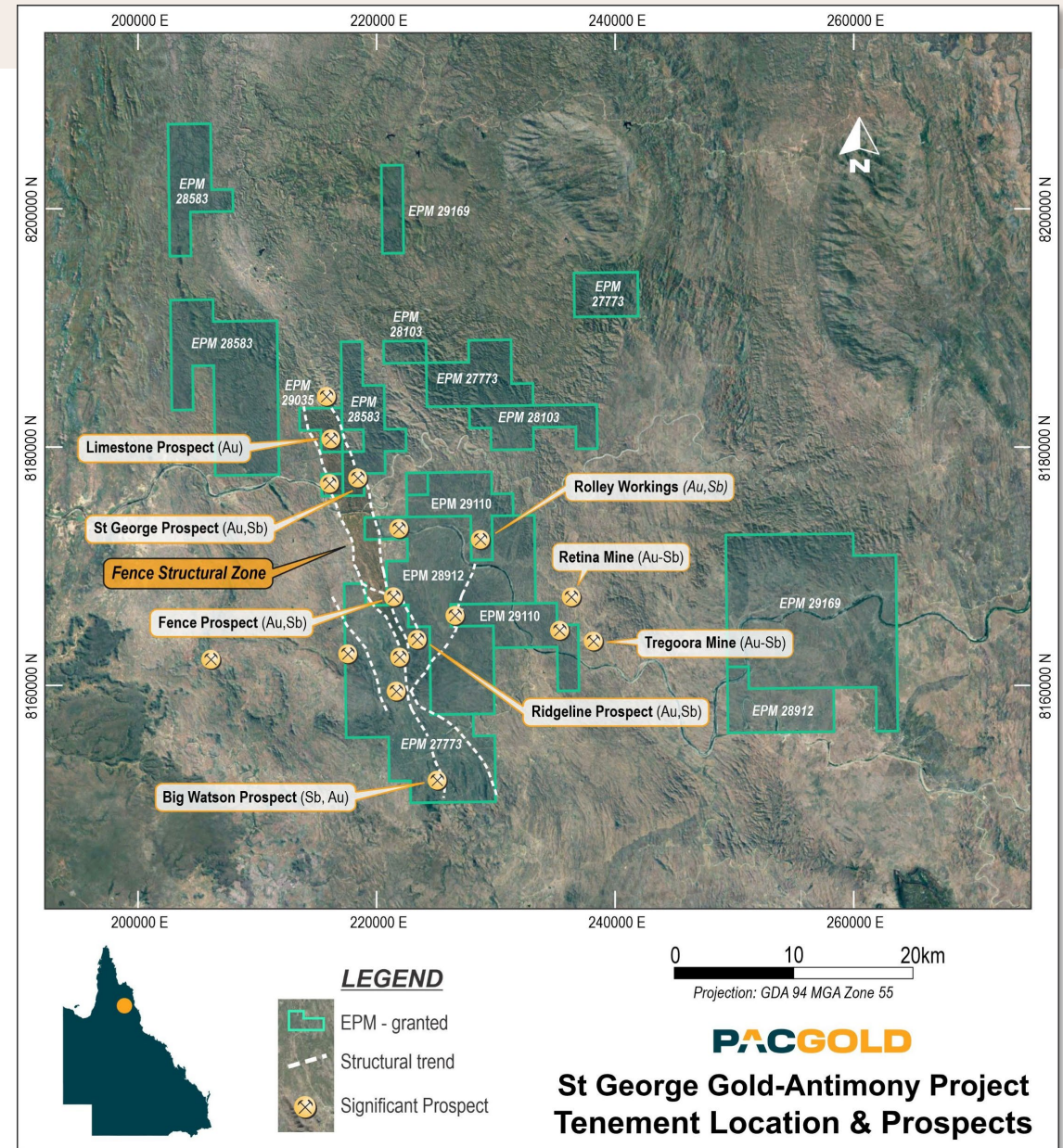
<sup>1</sup> Historical reports Queensland Government mining journal 1968, " St George Antimony Mine Mitchell River By K.R.Levingston B.Sc District Geologist

# St George Gold-Antimony Project

## Staged Farm-In and Joint Venture Project<sup>1</sup>

**\$200,000 in cash and 10 million PGO shares** in return for the right to earn and acquire **up to 100% interest** in the Project over three stages:

- **Stage 1 Interest (51%):**
  - expending not less than \$250,000 within the 12-month period from Settlement Date, and
  - not less than \$1,500,000 within the 24-month period from Settlement Date
- **Stage 2 Interest (29%), for aggregate 80%:**
  - Completion of a BFS on a Mineral Resource >200,000oz AuEq on or before 22 August 2031; and
  - Granting a 2.5% NSR royalty on antimony and a 1.5% NSR royalty on gold
- **Stage 3 Interest (20%), for aggregate 100%:**
  - Electing to acquire the Stage 3 Interest within 1 year from the date the Company acquires the Stage 2 Interest; and
  - Paying an amount as determined by an independent expert agreed by the parties.



<sup>1</sup> ASX Announcement 18 August 2025 – Farm-in Agreement to acquire St George Gold-Antimony Project Noprrth Queensland

# St George Gold-Antimony Project

## ST GEORGE ANTIMONY MINE

- Historical production of **60T grading 60% Antimony<sup>1</sup>** from artisanal open cut workings
- No prior systematic exploration

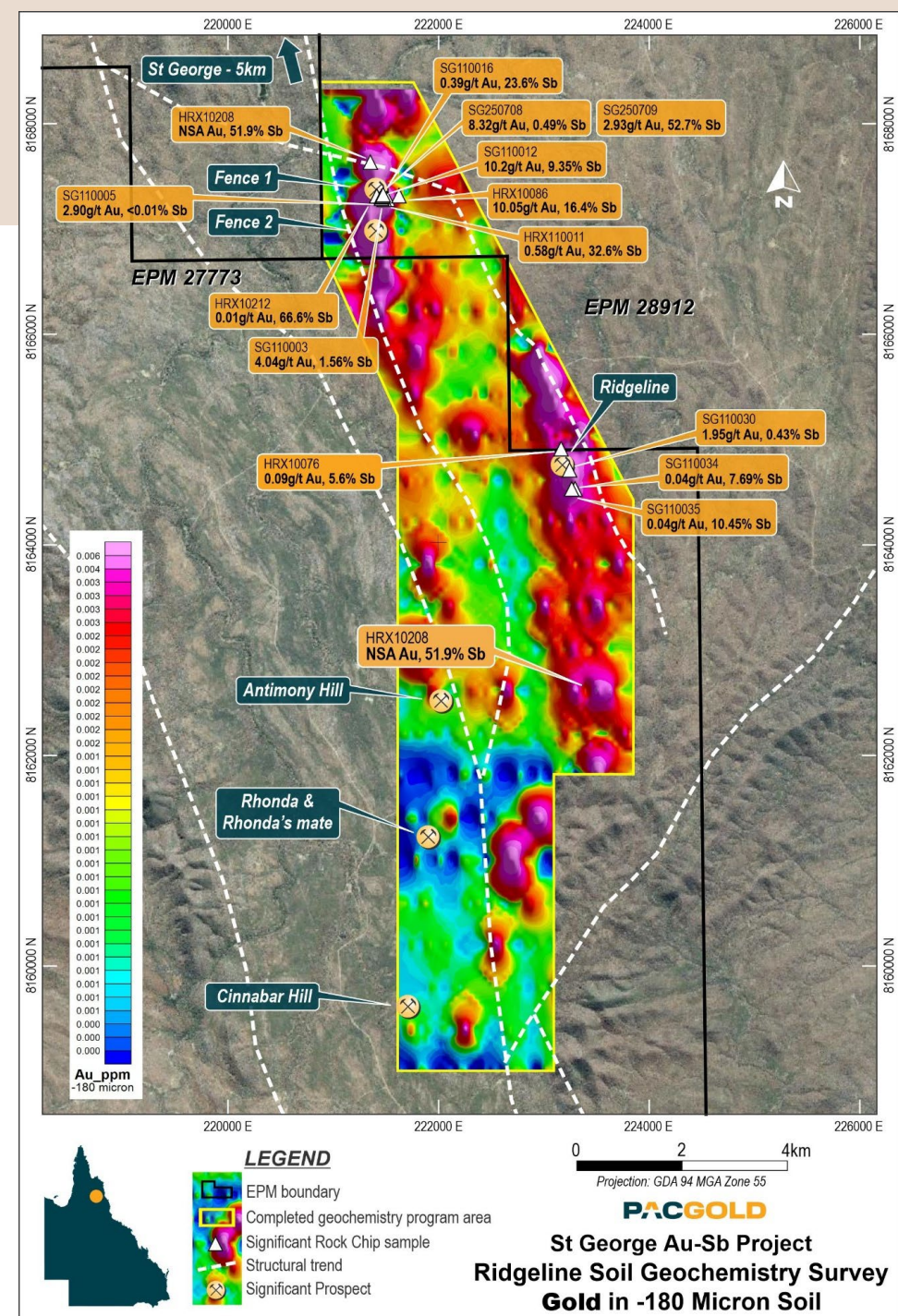
## PROVINCE-SCALE SURFACE EXPLORATION

- Systematic soil & rock sampling defined a continuous **Gold and Antimony anomaly over 30km strike** along Fence Structural Zone
- 7 major regional targets identified, including new Limestone Prospect which returned **high-grades up to 18.5g/t Au**
- 900km<sup>2</sup> of tenements to explore**
- 60km<sup>2</sup> of geochemical anomaly delineated in first 4 months of JV**

## SUCCESSFUL MAIDEN DRILLING PROGRAM

- 9 RC holes (826m) tested 200m strike directly beneath historic St George open pit mine
- 8 holes intersected continuous quartz veining and confirmed direct down-dip extension of surface mineralisation
- Returned outstanding **high-grade intersections up to 12.8% Sb** and consistently hitting associated gold
- Mineralised system remains open along strike and down dip

<sup>1</sup> Historical reports Queensland Government mining journal 1968, "St George Antimony Mine Mitchell River By K.R.Levingston B.Sc District Geologist Refer to PGO ASX Announcements on 16 Dec 2025, 22 Dec 2025, 29 Jan 2026 & 26 Mar 2026.



# Why Invest in Pacgold? The Global Vision



## Cashflow, restarting Au production at White Dam

Pacgold has recommenced leaching, completed full plant refurbishment with first gold pour achieved, self-sustaining cashflow from fully permitted mines with minimal capital requirement



## Increase and upgrade existing resources

Pacgold will recommence infill and extension drilling on existing Hannaford, Vertigo and White Dam North asset, update resource model and re-run pit designs and economics



## Gold Price Leverage

Pacgold offers exposure to record high AUD gold price via both near-term production and exploration



## Regional Consolidation Exploration

Outstanding regional opportunity in both SA and QLD to expand on existing resource base and add value on Au + Sb



## Experienced Management

Pacgold's Board & management team has experience to deliver value for shareholders

# PACGOLD

## Company Contact:

**Matt Boyes**  
Managing Director

[mboyes@pacgold.com.au](mailto:mboyes@pacgold.com.au)  
+61 (0) 498 189 338

## Investor & Media Queries:

**Jason Mack**  
Whitenoise Communications

[jason@whitenoisecomms.com](mailto:jason@whitenoisecomms.com)  
+61 (0) 400 643 799

ASX:PGO  
[pacgold.com.au](http://pacgold.com.au)



First gold pour at White Dam