

IDENBURG JORC MRE INCREASES FROM 540,000 OUNCES TO 780,000 OUNCES OF GOLD

The Directors of Far East Gold Limited (ASX: FEG) (**FEG** or the **Company**) are pleased to announce an **updated independent Inferred JORC Mineral Resource Estimate (MRE)** of 7.8 million tonnes at an **average grade of 3.1 g/t gold**, representing **780,000 ounces of gold** at the Company's Idenburg Gold Project (see Table 1 below).

The updated MRE represents an **increase of 240,000 ounces of gold**, or **approximately 44%**, from the Company's initial JORC Inferred Resource Estimate of 4.1 million tonnes at an average grade of 4.1 g/t gold, representing 540,000 ounces of gold. Both estimates have been independently determined by SMG Consulting, based in Jakarta, Indonesia, in accordance with the JORC Code (2012 Edition).

HIGHLIGHTS:

- **Significant 44% increase in total JORC Inferred Mineral Resource Estimate to 780,000 ounces of gold** — FEG's Idenburg Gold Project now hosts a total MRE of **7.8 million tonnes at 3.1 g/t gold**, representing 780,000 oz gold (refer to Table 1), underlining the Project's substantial and growing resource base.
- **Resource growth driven across multiple high-quality prospects** — the updated MRE consolidates mineralisation from four distinct prospect areas: an upgraded resource at the Sua prospect, a maiden resource at the highly prospective North Bermol prospect, and previously reported resources at the Bermol and Mafi prospects. Critically, only 4 of 15 identified prospect areas have been drill-tested with the other 11 prospect areas identified by historical exploration have had little follow-up exploration. The Company has also identified an additional 15 high priority, interpreted structural targets that require detailed mapping to confirm. Such targets highlight the exceptional new discovery potential remaining at Idenburg.
- **Resource estimates validate the Company's exploration strategy** — resource estimates across all four prospects are consistent with the initial exploration targets set out in the SMG Consulting Exploration Target Report of June 2024, demonstrating the quality and reliability of FEG's geological model and the systematic execution of its exploration program.
- **Scoping Study underway — project development pathway is now firmly in focus** — FEG has engaged Mining One Consultants (Jakarta) to complete a Scoping Study evaluating the potential development of the Idenburg Gold Project's inferred resources. With continued exploration and targeted diamond drilling across the remaining 11 historical prospect areas, the Board is confident of delivering further material resource additions, with significant potential to grow the resource base well beyond its current scale.

**CEO Comment – Shane Menere**

“This updated Mineral Resource represents a defining milestone for the Idenburg Gold Project and clearly signals Far East Gold’s transition from exploration into project development. Through disciplined drilling at Sua, we have increased the resource from 540,000 ounces to 780,000 ounces while making a new discovery at North Bermol, validating both the scale and continuity of the system, with substantial upside remaining across a largely underexplored district.

Importantly, we have now established the core technical and permitting foundations required to advance Idenburg along a development pathway. Metallurgical test work indicates strong recoveries using conventional processing methods, permitting milestones including forestry reclassification have been achieved, and a Scoping Study the next step to further define the project’s development potential.

In parallel with ongoing exploration aimed at systematically expanding the resource base, the Company intends to progress technical studies toward feasibility-level assessment in Indonesia. This work aligns with our contractual pathway to increase project ownership and will provide greater clarity around the potential production profile and long-term value of the asset.

The combination of resource growth, favourable metallurgy, advancing permitting, and district-scale exploration potential positions Idenburg as a compelling gold project within the region. With only a small portion of identified prospect areas drill tested to date, we see a clear pathway to continue delivering resource growth alongside development milestones, supporting a consistent pipeline of news flow.

As the project continues to mature, we are seeing increasing interest in assets of this scale and quality, particularly those with clear development pathways and exposure to strong gold fundamentals. We believe Idenburg is emerging as a strategically important gold asset with the potential to attract broader market attention as we continue to advance both exploration and development in parallel.”

CEO & Director Shane Menere has released a video discussing this announcement. Watch the video on our investor hub here: <https://fareast.gold/link/PmdE8r>



Figure 1: Map showing the location of the Idenburg COW in Papua Indonesia relative to the locations of world class multimillion ounce gold-rich porphyry copper deposits.

The Idenburg Project is situated within the Keerom and the Pegunungan Bintang Regencies of Papua (Figure 1), near the border with Papua New Guinea. The all-weather Trans Irian Highway is an asphalted road from the regional capital of Jayapura that transects the Exploration COW and allows for relatively easy access and cost-effective logistical support (Figure 2). Compared to other projects in Papua logistical support is simple and cost-effective especially when compared to the other major producers in Papua.

Geology and Geological Interpretation

Field observations show that the basic style of gold mineralisation as determined from mapping and drill core logging is of the orogenic gold type, also referred to as mesothermal lode gold. The presence of coarse gold with a high nugget value is inherent to deposits of this type and will need to be evaluated when sampling or assaying.

The current Idenburg project COW is situated in the northeast corner of a diverse terrain located at the boundary of the zone of plate interaction on the northern edge of the Mamberamo Fold and Thrust Belt. This is a 200-kilometre wide, northwest trending, complex zone of anastomosing, linear, and locally imbricate faulting and thrusting.



The Idenburg project COW is situated within the western portion of the Idenburg Inlier, which extends into the Amanab Terrane in western Papua New Guinea. This is a block of older continental crust situated within the boundary zone between the two colliding plates. It consists of the Australian plate metamorphic rocks (phyllites, schists, and gneisses), and abducted ophiolites (gabbro, granodiorite, diorite, diabase, and basalt unconformably overlain by early to mid-Tertiary shelf limestone, shallow marine limestone and mid-to-late Tertiary shallow marine claystone, siltstone, greywacke and carbonates (Figure 2).

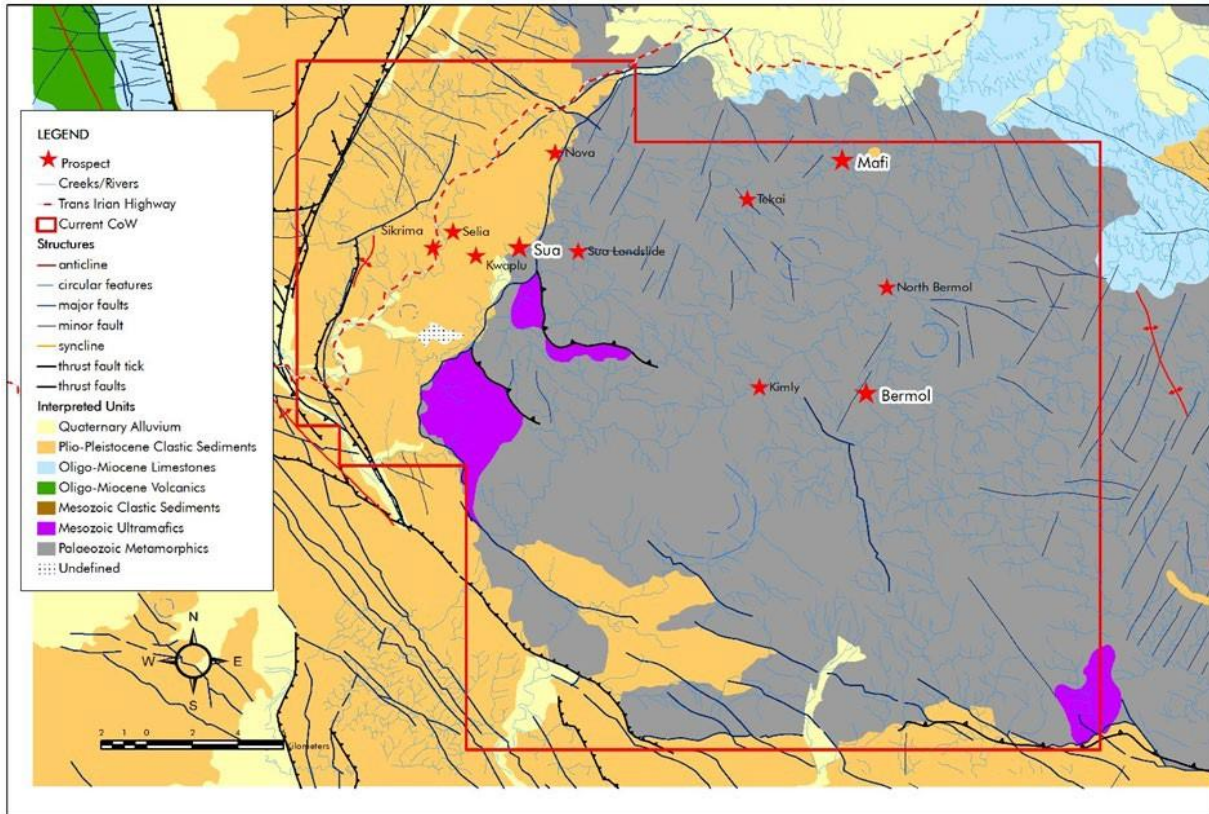


Figure 2 – Geology of the Idenburg Inlier showing the Sua-Afley Shear Zone and Mafi River Thrust Fault in Blue Dash-Dot Lines. The Idenburg project COW boundary is shown (red) as are the locations of several of the known prospect areas.

Two regional post-Mesozoic deformation events were responsible for the present structural configuration of the region:

1. Compressive deformation accompanying the Oligocene-Miocene collision of the Australian and Pacific Plates; and
2. Subsequent on-going oblique collision between the two plates during the Late Miocene that was responsible for the structural inversion of the North Coast Basin and development of the Mamberamo Thrust Belt.

A zone of dilatational jogs with sigmoidal fractures and linear ridges associated with sinistral wrenching has been identified in the Derewo Metamorphics that occurred during deformation.



This is the same event that focused emplacement of the Grasberg/Ertsberg intrusions that are associated with the world-class copper-gold deposits of the Ertsberg mining district.

Two regional dislocations developed in the area during these deformation events:

1. The Derewo Fault Zone separating the Australian Plate and the Derewo Metamorphics; and
2. The Der Wal Fault Zone and the Luban Fault Zone, which separate the Derewo Metamorphics from the Ophiolite Belt in the northwest and from the ophiolites and Idenburg Inlier in the southeast.

The Idenburg Inlier is structurally complex with NW-trending regional folds and associated axial plane faults, strong NW-striking regional thrusts, and normal and strike-slip faults containing intensely sheared ultramafic rocks.

In June 2024, SMGC reported Exploration Targets for 14 prospects identified by historical exploration within the Idenburg CoW area (Figure 3). Refer to the independent SMG Consultants (SMGC) report titled Pt. Iriana Mutiara Idenburg Exploration Targeting Report of June 2024 that was included in the Company’s ASX announcement of August 21, 2024.

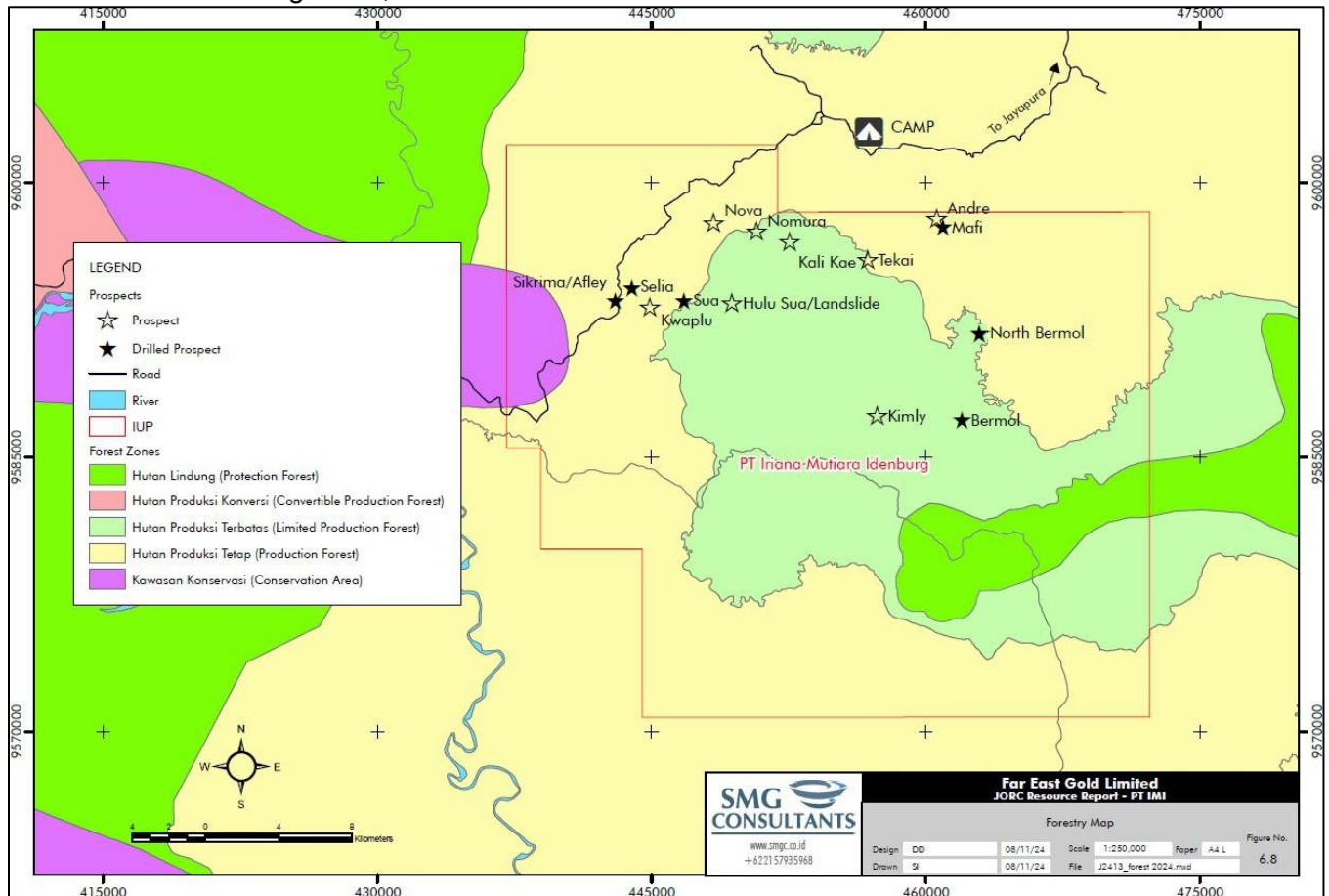


Figure 3 : Map showing the location of the Idenburg CoW and prospect areas identified. The Sua, North Bermol, Bermol and Mafi prospects comprise the current JORC 2012 inferred resource estimate determined by SMGC.



DRILLING

Three campaigns of diamond drilling have been completed at Idenburg. Two of these were historical drilling completed up to 2007 and resulted in 59 holes drilled for a total of 5,690.95m within the Sua (22 holes/2,255.25m), Bermol (7 holes / 77.41m), Mafi (23 holes / 1,642.2m), Sikirima (4 holes / 598.3m) and Selia (3 holes / 423.8m).

Drill results from Sua, Bermol and Mafi were used for the initial Idenburg JORC 2012 inferred mineral resource completed by SMGC in 2024. Recent diamond drilling by FEG completed between June 2025 and March 2026 total 6,892.6m in 56 drill holes. The drilling was completed at Sua (18 holes/4,125m), Bermol (12 holes/1,224.9m) and North Bermol (26 holes/1,542.7m). To date a total of 12,583.55m have been drilled at Idenburg from 115 drill holes to test 6 separate prospect areas.

The updated mineral resource reported herein is based on 90 drilled holes and results reported from a total of 4,896 individual assays of drill core. FEG drilled holes included in the updated inferred JORC 2012 resource estimate include 13 holes from Sua and 25 holes from North Bermol representing an additional 4,175.7 m of drilling. The Bermol and Mafi resource estimates stated in the updated resource are based on historical drilling and assay data and are unchanged from the initial inferred JORC 2012 resource estimate prepared by SMGC in 2024. Compiled significant intersections for historical drillholes and FEG drill holes included as part of the updated Sua resource estimate are listed in Appendix 1. Hole spacings for each deposit area were generally drilled along 100m spaced fences with 2 holes at 100m spacing often drilled on each section. Most holes were drilled on section and oriented perpendicular to the interpreted main strike of shallow dipping vein/shear structures. Drilled widths of mineralized zones are interpreted as apparent true widths. FEG did complete a few 50m spaced drill holes at the Sua prospect. The Mafi deposit had 6 holes drilled at variable orientations from 2 drill pads due to difficult terrain.

Although the drill results confirmed the interpreted strike and dip continuity of gold-bearing shear zones and contained quartz veins, the current hole density is insufficient to allow for detailed geological model of the host structures and veins. This was particularly evident at the Bermol prospect where despite FEG drilling 12 holes geological modelling remains ongoing, and SMGC decided to defer to the initial 2024 resource estimate for Bermol. As such, until a program of closer-spaced infill drilling is completed the updated mineral resource estimate for Idenburg reported herein remains classified as inferred under JORC 2012.

Drilling Technique

- Triple tube diamond core drilling – fully drilled with a diamond bit without RC pre-collar.
- Core diameter was normally PQ size from surface to the base of oxidation then HQ to end of hole unless it became necessary due to ground conditions to reduce to NQ to finish the hole.
- Downhole surveying was routinely conducted at 30 metre intervals for historical drilling and 50m for FEG drilling.
- Hole and drillcore orientation was measured using a downhole lance for historical holes and a MagCruiser MM105 tool from Stockholm Precision Tools for FEG drilling.
- The core was fitted together and marked up for sampling by a trained IMI/FEG geologist. Where loose fragments were seen the core was wrapped in masking tape before the core was cut in half.
- Core recoveries exceeded 90% for all mineralised intervals reported. Rock quality data



- (RQD) was recorded for each hole on a digital logging sheet.
- Statistical analyses indicate no relationship between grade and recovery.

Sampling and Subsampling

Techniques Drill Core Sampling

- All drill core was digitally photographed and logged by project geologists. Core with any potential for mineralisation was marked up for sampling and dispatched to an analytical laboratory for geochemical analysis. Only obvious non-mineralised core was not sampled.
- Half core was selected for geochemical analysis.
- Historical drill core sample intervals ranged from 1.0 to 2.0 metres, with an average interval of 1.38 metres. More recent FEG sampling of Sua and North Bermol drillholes, ranged from 0.3 to 1.5 metres, with an average interval of 0.8 metres.
- All historical half-core samples were packed into woven polysacks by experienced site personnel and air freighted to the Sucofindo Laboratory in Timika, Central Papua. FEG core samples were air freighted to the Geoservices Laboratory in Bekasi, West Java. Both laboratories are located in Indonesia.
- All historical sample preparation and assays were undertaken by the Sucofindo Laboratory. FEG sample preparation and assays were completed at Geoservices Laboratory.

A comprehensive review of the results of historical exploration is provided in the independent SMG Consultants (SMGC) report titled Pt. Iriana Mutiara Idenburg Exploration Targeting Report of June 2024 that was included in the Company's ASX announcement of August 21, 2024.

Data Verification and Sampling Analysis

A complete review of the Idenburg project geological database was conducted to assess if the data was suitable to support the estimating and reporting of Gold Resources by a Competent Person according to SMGC's interpretation of the 2012 JORC Code. To allow estimation and reporting according to SMGC's interpretation of the 2012 JORC Code, a Resource must have enough valid points of observation, and these points must be suitably spaced to accurately represent the deposit being modelled. Domain continuity and its characteristics must be understood to allow confirmation of the Resource. Points of observation can be outcrops, exploration trenches, or boreholes.

Valid points of observation require the following information:

- Correct survey location data; ensuring that there is an acceptable discrepancy with the surface topography
- Geological logs detailing the various lithologies and geological structures present at a given Location
- A downhole survey must be undertaken to check for borehole deviation



- Representative ore samples must be collected and submitted to an accredited laboratory for analysis, followed by verification through QA/QC procedures.

The majority of all the above criteria were met by FEG project exploration data to date. Borehole collar elevation adjustments were made to the topographic surface for Sua, North Bermol, Bermol, and Mafi. FEG provided X, Y, Z point data, which were used by SMGC to generate a three-dimensional Digital Terrain Model (DTM) that was applied for the update resource estimation as the upper boundary (topographic constraint) for the Sua Prospect. In October 2024, PT Energi dan Mineral Teknologi Internasional (Enmintech) conducted a topographic survey using photogrammetry technology. A three-dimensional digital terrain model (DTM) was generated and provided to SMGC for both Bermol and Mafi. In October 2025, Enmintech completed a UAV LiDAR and geomagnetic survey covering approximately 1,130 hectares, over the Bermol and North Bermol prospects. A high-resolution 3D DTM for North Bermol was generated from the LiDAR data and supplied to SMGC and was used in the resource estimation for North Bermol.

During the historical IMI exploration phase, QA/QC procedures were limited to laboratory-based controls. This was assessed by duplicate sampling undertaken by SMGC during a site visit in August 2024, and which identified some concerns. FEG has implemented more comprehensive QA/QC protocols for its drilling programs within the Sua, North Bermol, and Bermol prospects areas during June 2025 to February 2026. This included the routine insertion of Certified Reference Materials (CRMs), field duplicates, and blank samples to ensure ongoing monitoring of assay accuracy, precision, and contamination.

A total of 106 standard samples were submitted and analysed by Geoservices Laboratory. The assay results indicate that all of the CRM values fall within ± 2 standard deviations. SMGC considers these results to demonstrate good agreement between the analytical results and the certified values, indicating that the assay data are within acceptable limits. Accordingly, the laboratory performance is assessed to have a high level of analytical accuracy. These factors are important considerations for classifying the resource into the appropriate category. SMGC has also noted the presence of limited artisanal mining at the Mafi prospect area and considers it has no material impact to the geological and resource block models determined.

Taking all into account SMGC deemed that the gold deposits at Sua, North Bermol, Bermol and Mafi can be categorized as Inferred Mineral Resources according to JORC 2012 requirements.

Estimation and Modelling Techniques

For the JORC Mineral Resource estimation SMGC completed a thorough review of the available Idenburg geological database to assess if the data was suitable to support the estimating and reporting of gold resources by a Competent Person according to the 2012 JORC Code. Based on their interpretation SMGC determined that the necessary criteria were met. SMGC determined that the zones of mineralisation delineated within the Sua, North Bermol, Bermol and Mafi prospects areas could be classified as a 'Mineral Resource' according to the 2012 JORC Code standards as stated below:

A 'Mineral Resource' is a concentration or occurrence of material of intrinsic economic interest in or on the Earth's crust in such form, quality and quantity that there are reasonable prospects for eventual economic extraction. The location, quantity, grade, geological characteristics and continuity of a Mineral Resource are known, estimated or interpreted from specific geological evidence and knowledge. Mineral Resources are sub-divided, in order of increasing geological



confidence, into Inferred, Indicated and Measured categories (2012 JORC Code)

Generally, the parameters which are considered for classification of the Mineral Resource are the distribution and density of drill data, confidence in interpreted geological continuity of the mineralised zones, and confidence in the resource block estimates. SMGC used the exploration data to build geological models and grade wireframes for the Sua and North Bermol projects. Wireframes used for the Bermol and Mafi prospect block models were from IMI historical data and have not been modified for the updated resource estimate. In preparing the updated 2012 JORC estimate, SMGC was of the opinion that the deposits in the four prospective areas could only be categorized as Inferred Resources (Table 1). SMGC estimated the ore tonnage for the 4 prospect areas using a cut-off grade of 0.1 g/t Au with no grade capping applied to the IMI historical assays or the FEG assays. No metal equivalencies were applied.

Prospect	Resource Class	Tonnes (Mt)	Au (ppm)	Ag (ppm)	Cu (ppm)	Pb (ppm)	Zn (ppm)	Au Koz	Ag Koz	Cu K lbs	Pb K lbs	Zn K lbs
Sua	Inferred	5.6	2.9	0.5	145	5.7	71.4	514	89	1,793	71	881
North Bermol	Inferred	0.5	1.2	1.3	160	38.0	87.6	22	23	193	46	106
Bermol	Inferred	1.5	4.8	2.7	432	15.8	44.0	228	125	1,274	47	130
Mafi	Inferred	0.2	2.9	51.7	595	14,868	6,135	16	284	204	5,102	2,105
Total	Inferred	7.8	3.1	2.1	210	336	201	780	522	3,464	5,266	3,222

This table must be presented with the entire JORC Resource Report from which it was obtained.

All values are rounded to a maximum of three significant figures.

There may be minor discrepancies in the above table due to rounding of tonnes. These are not considered material by SMGC.

Table 1: Idenburg mineral resource table as estimated by SMGC as of March 31, 2026. The estimation is based on historical and FEG exploration data using a cut-off grade of 0.1 g/t Au with no grade capping applied. No metal equivalencies were applied for the resource estimation.

An ‘Inferred Mineral Resource’ is that part of a Mineral Resource for which quantity and grade (or quality) are estimated on the basis of limited geological evidence and sampling. Geological evidence is sufficient to imply but not verify geological and grade (or quality) continuity. It is based on exploration, sampling and testing information gathered through appropriate techniques from locations such as outcrops, trenches, pits, workings and drill holes. An Inferred Mineral Resource has a lower level of confidence than that applying to an Indicated Mineral Resource and must not be converted to an Ore Reserve. It is reasonably expected that the majority of Inferred Mineral Resources could be upgraded to Indicated Mineral Resources with continued exploration.

To estimate grades for Sua and Mafi, SMGC applied the Inverse Distance Weighting (IDW) method. This method assigns a value to a grid node by calculating the weighted average of either all data points or a selection of neighbouring points distributed in various directions. Each data point’s value is weighted based on the inverse of its distance from the grid node, squared. The choice of the exponent’s value determines the degree of localisation in gridding, with higher exponents leading to a more localised influence of distant points on the value assigned to each grid node. There was no grade capping applied in the IMI geological modelling. Further technical specifics of the resource determination are provided in the appended JORC Table 1. Table 2 below shows the difference between the initial Idenburg inferred JORC 2012 resource estimate



(Dec.2024) and the updated inferred JORC resource estimate (April 2026). The Mineral Resource Estimate in 2026 is 3.6 million tonnes (240 Koz) more than the previous estimate in 2024. This additional resource was contributed by the Sua prospect of 3.1million tonnes (218 Koz) and North Bermol 0.5 million tonnes (22 Koz).

Prospect	IMI Mineral Resources 2024			IMI Mineral Resources 2026			Changed		
	Tonnes (Mt)	Au ppm	Au Koz	Tonnes (Mt)	Au ppm	Au Koz	Tonnes (Mt)	Au ppm	Au Koz
Sua	2.5	3.7	296	5.6	2.9	514	3.1	0.8	218
North Bermol	-	-	-	0.5	1.2	22	0.5	1.4	22
Bermol	1.5	4.8	228	1.5	4.8	228	0.0	0.0	0.0
Mafi	0.2	2.9	16	0.2	2.9	16	0.0	0.0	0.0
Total	4.1	4.1	540	7.8	3.1	780	3.6	1.0	240

**The changed value simply describes the difference between current and previous resources reported in absolute numbers*

Table 2: Idenburg mineral resource table showing the difference between the initial and updated estimates as determined by SMGC. Both estimates are based on historical and FEG exploration data using a cut-off grade of 0.1 g/t Au with no grade capping applied.

Geological Modelling Techniques

SMGC created 4 geological models for the updated Idenburg JORC 2012 resource estimate. The area covered by the 4 models are: 1) Sua: ~ 1,130m x 1,000m; 2) Bermol: ~ 1,240 m x 1,280 m; 3) North Bermol – 750m x 1,700; and 4) Mafi: ~ 500m x 460 m. The geological models for each mineral resource area are discussed below. SMGC used the existing wireframes of Bermol, and Mafi for ore domaining that were modelled and presented in the Company's August 21, 2024 Exploration Target announcement. FEG provided interpreted wireframes for Sua and North Bermol for drillholes completed between 2025 to 2026. Checks and validation of the borehole databases against the wireframes were undertaken by SMGC to ensure that the wireframes intersected the gold mineralized zones.

These checks included:

- A visual cross-sectional check of borehole sample Au assays against the ore domain.
- Conduct a visual inspection of the wireframe extrapolations.
- Reporting of the gold grade within the ore domain.
- The geological model is limited by a maximum 100m extrapolation from data.
- The parent block size selected 20m x 20m x 2m (minimum block size 2.5m x 2.5m x 2m) were considered appropriate for this style of mineralisation. The assumption of the block size was designed to match the drill spacing.
- For the initial (2024) Idenburg resource estimate, SMGC opted for the Inverse Distance Weighting (IDW) method for the Sua and Mafi prospects and weighted average approach for Bermol. SMGC applied the same IDW method for the updated resource including FEG drillholes completed at Sua and North Bermol while the Mafi resource remained unchanged.
- The grade estimation for Bermol which applied a weighted average approach was unchanged for the current resource estimate.
- There was no grade capping applied in the initial (2024) and current (2026) geological modelling.



- Validation to the model was carried out using three main techniques:
- Histograms of sample assays and model grades.
- Swath Plots of sample assays and model grades.
- Cross sections depicting boreholes in relation to the block model.

The initial (2024) Idenburg resource estimate was determined using a historical IMI determined specific gravity (SG) of 2.8 t/m³ for the Sua prospect through bulk density measurements. FEG determined the same specific gravity based on bulk density measurements completed in the field. SMGC believes this measurement to be consistent with the host rock and style of mineralization and applied the same specific gravity when estimating the mineral resources at the 4 prospects.



Sua Prospect

The gold mineralisation occurs in an extensive shear zone system containing boudinaged quartz \pm sulphide veins. Veins vary from <1m to about 3m in thickness. Although rare coarse gold has been observed in drill core, petrographic study indicates that most of the gold occurs as free grains within pyrite occurring along microfractures. Surface oxidation extends to maximum 20m depth. The shear zones show intense ductile deformation manifest as mylonites and intensely foliated rock types and are interpreted to be part of an extensive thrust fault system. The shear zones have a preferred NNE trend and moderate NNW dip, hosted predominately within silica-sericite-chlorite-pyrite altered diorite. There is visual evidence that both deformation and sulphide mineralisation was multistage and superimposed.

Geological modelling indicates that the gold-bearing shear zones occur as a system of stacked zones that have variable thickness and lateral extent (Figure 4). Importantly that zones have considerable vertical extent and have been intersected from surface to approximately 250m depth. This is consistent with other orogenic gold systems globally.

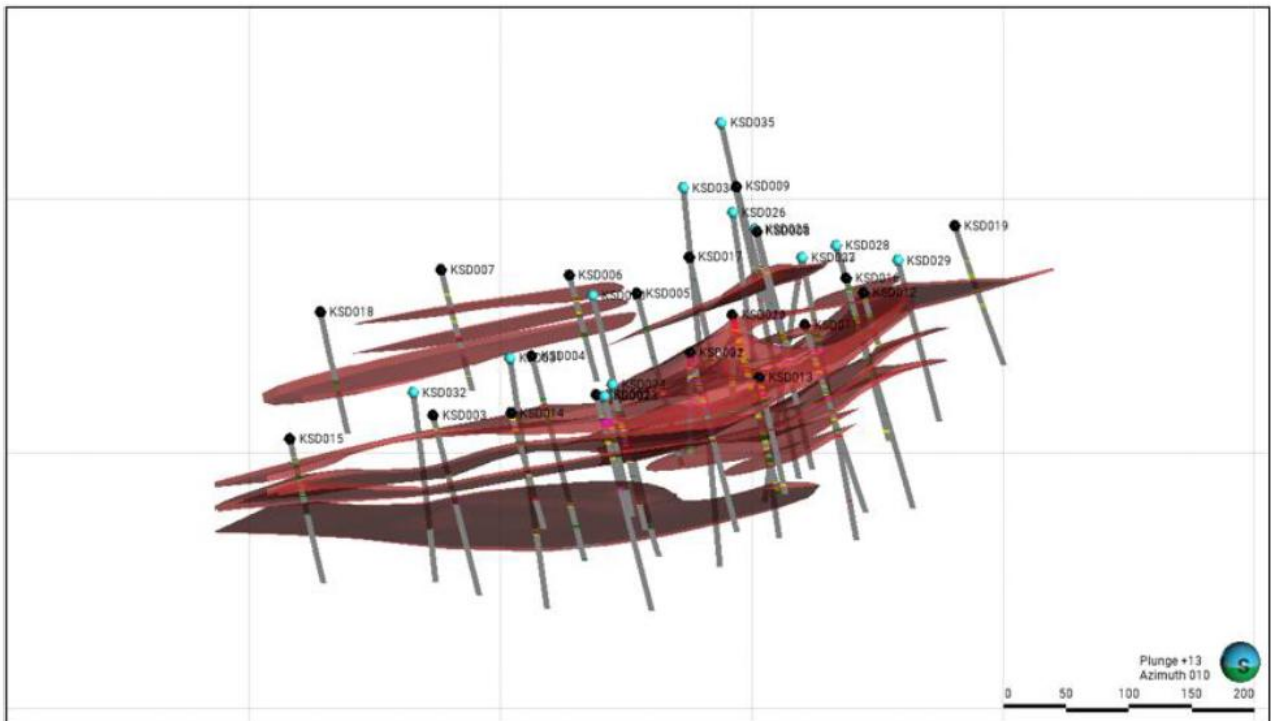


Figure 4: Oblique View Boreholes and Mineralization Wireframes Sua Prospect

Wireframes modeled by FEG to represent the interpreted geometry of the gold-bearing shear-quartz vein systems were provided to SMGC. The extent of these extrapolations was guided primarily by geological interpretation derived from field mapping, supplemented by experience with analogous vein-hosted gold systems.



The wireframes were evaluated by SMGC relative to the drillhole database and to maintain a conservative approach, were not extended more than 100 metres beyond the limits of supporting drillhole data (Figure 5).

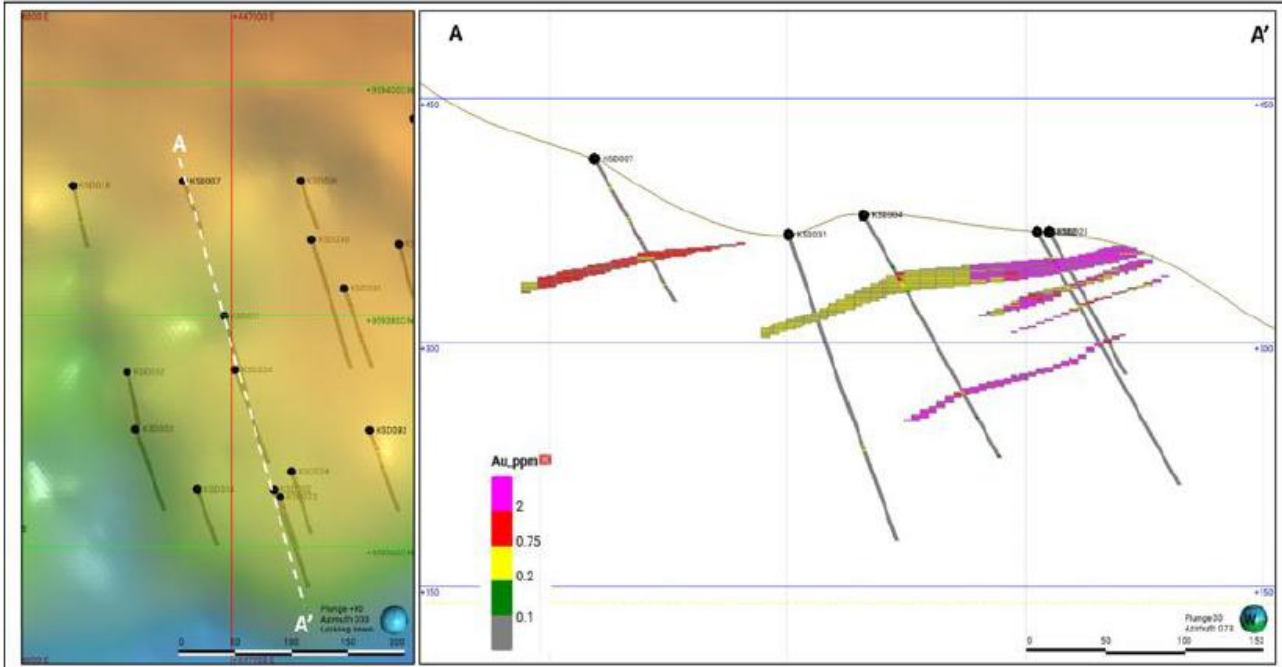


Figure 5: Cross section of Sua mineralisation wireframe showing drillholes and grade distribution

North Bermol Prospect

Gold mineralisation at North Bermol occurs in association of structurally deformed quartz veins ± sulphides contained within what FEG interprets as a laterally extensive, low-angle (10 degrees) thrust fault shear zone. The shear zone is characterised by intense ductile deformation of metadiorite and metabasalt and is best developed along lithological contacts. The vein geometry has been modelled as an elongated mineralised body aligned with the majority structural NE trend and shallow NE and SW dip recognised in the data. The quartz veins vary in thickness from a few millimetres up to 3 metres. The quartz veining is associated with a shear zone along the ductile-brittle deformation and are mineralised with gold and sulphides.

Wireframes were constructed to represent the interpreted geometry of the gold-bearing quartz veins at the North Bermol Prospect (Figure 6). The models were developed primarily from available drilling data and extended along strike and down dip to reflect the interpreted continuity of mineralisation. These extensions were guided by geological interpretation, including observed vein orientations and continuity within the drill dataset, supported by analogues from comparable vein-hosted systems. A conservative modelling approach was applied, whereby wireframes were not extrapolated more than 100 metres beyond the limits of supporting drillhole data.



Overall, North Bermol is interpreted as a vein-hosted gold target with moderate continuity at the scale of the current drilling, suitable for block modelling within a single vein estimation domain.

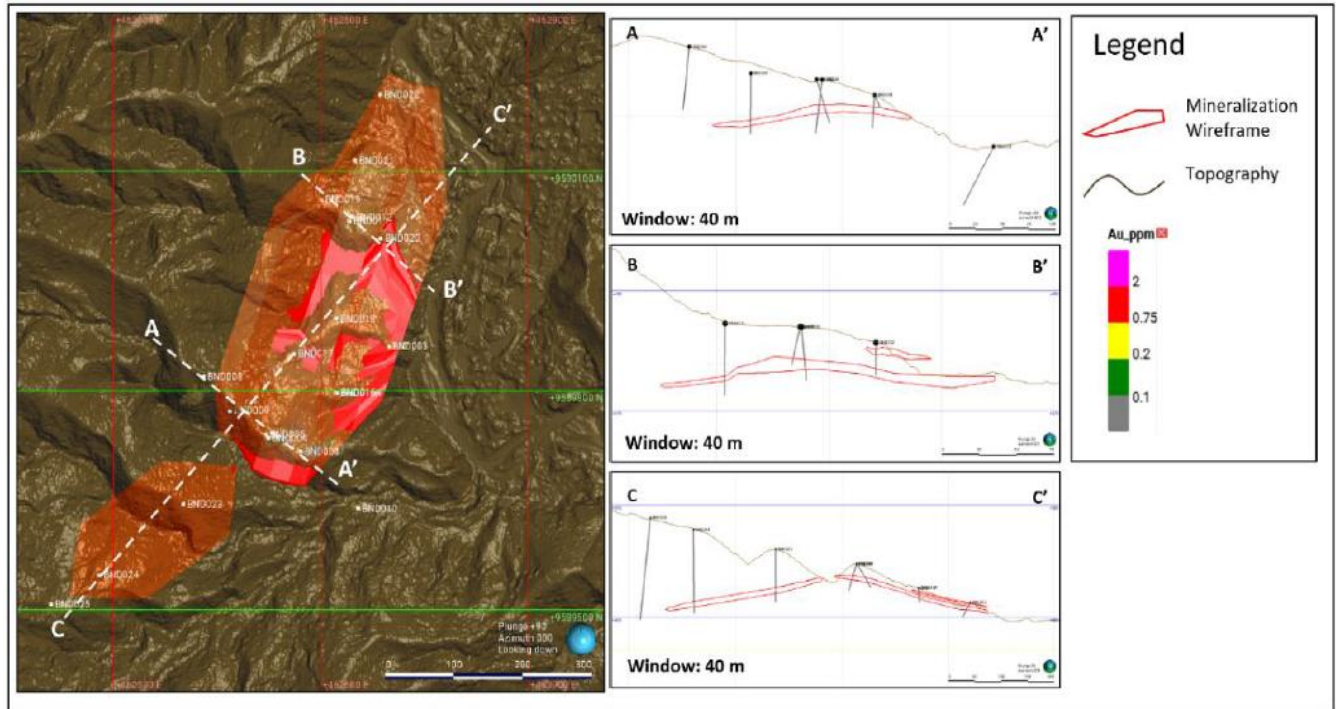


Figure 6: Cross section of North Bermol prospect showing mineralization contained within a single laterally extensive, shallowing dipping wireframe

Bermol Prospect

The Bermol geological modeling and interpreted wireframes remain unchanged from those evaluated and modeled by SMGC for the initial Idenburg inferred JORC 2012 resource estimate. Refer to ASX announcement of December 16, 2024. A gold mineralised quartz-sulphide vein zone has been mapped over 600 metres of strike length and over a width of 300 metres on the two main NS-trending ridges at Bermol. This is a single thrust plane that dips at less than 25 degrees to the west and appears to have multiple zones by virtue of both the topographic effect and faulting. Mineralisation is associated with quartz-pyrite-arsenopyrite "augen" veins hosted in a tightly constrained envelope of sheared quartz-chlorite-carbonate altered schists. This is reflected in the high As values in samples collected from Bermol, often exceeding 1%. Vein attitudes are predominantly conformable with schistosity and foliation trends. Gold mineralisation has been modelled as a single vein structure that has been downthrown by faulting towards the north on the western side of the river and outcrops at a higher elevation on the eastern side (Figure 7).

Avocet and IMI completed 7 scout holes (total depth of 771 metres). Drilling focused on the core part of the Bermol Prospect, which has an NS extent of 400 metres. The program did not test the potential southern extension of the system or the known northern extension to North Bermol. FEG completed a further 12 holes for a total of 1,224.9 m of additional drilling at Bermol between June 2025 and February 2026.



However, the updated geological model for Bermol had not been completed by FEG so SMGC decided to use the previous model. As such, the inferred JORC resource estimate for the Bermol prospect remains unchanged from the initial 2024 Idenburg resource estimate. Five discrete veins and 5 wireframes evaluated by SMGC are considered as representative of the known gold bearing quartz veins at the Bermol Prospect (Figure 8)

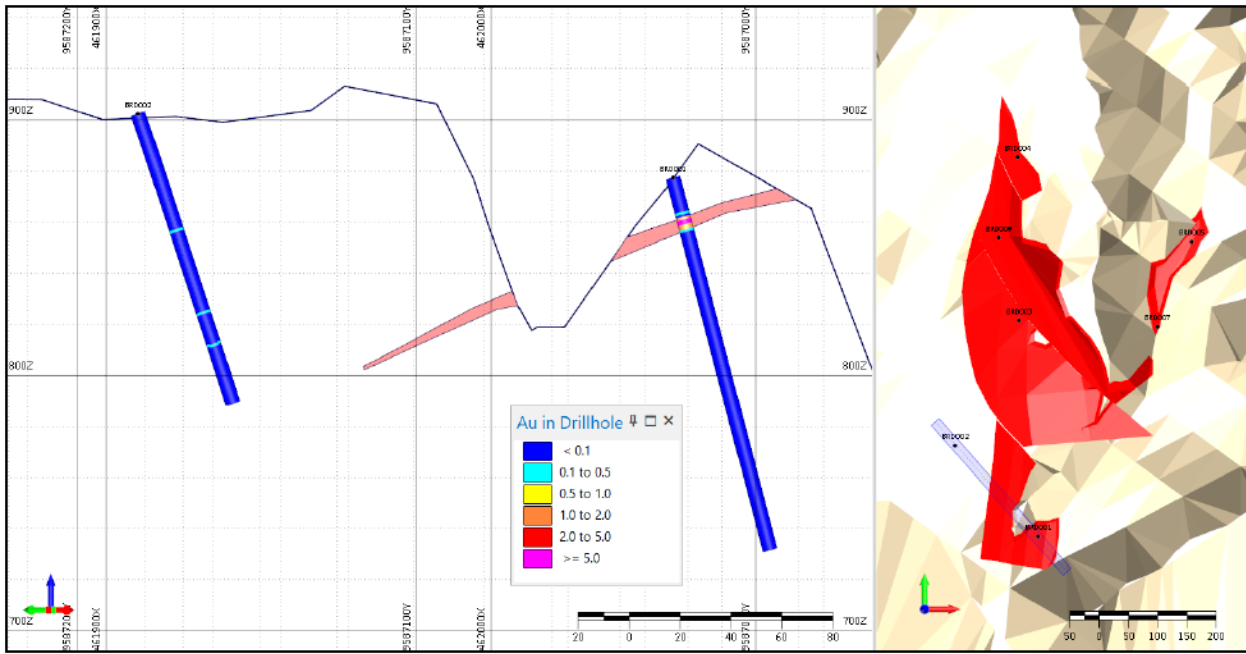


Figure 7: Cross-section of Bermol drillholes with Au Assays and mineralisation wireframe showing interpreted fault dislocation.

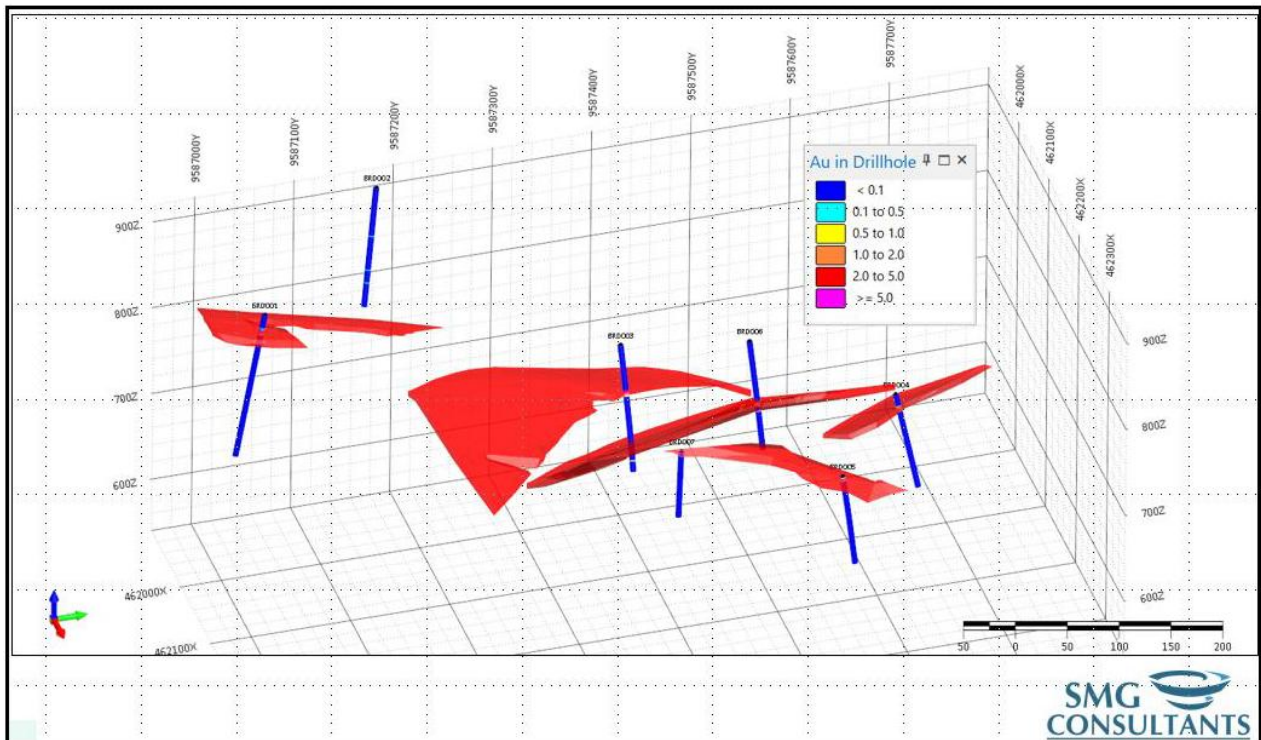


Figure 8: Bermol Mineralisation Wireframe Oblique View



Mafi Prospect

The Mafi geological modeling and interpreted wireframes remain unchanged from those evaluated and modeled by SMGC for the initial Idenburg inferred JORC 2012 resource estimate. Refer to ASX announcement of December 16, 2024. FEG conducted no additional exploration at the Mafi prospect. Gold mineralisation at Mafi occurs in oxidized and silicified ultramafic rock in vuggy, brecciated sulphide-quartz veins. The veins form a shallow (10° to 40°) west-dipping tabular zone. The description of mineralisation is characteristic of an epithermal structural setting. The mineralisation may be related to a thrust fault/shear zone and thus have the potential for steeper feeder zones which would have been conduits for the mineralisation. Outcropping mineralisation has been traced sporadically over a distance of 6 kilometres and possibly continues further south along the Mafi River Thrust Fault to Bermol, 15 kilometres to the south.

IMI conducted a 23-hole (1,642 metre) diamond drilling program on the Mafi Prospect in 2000. The program focused on an area of 200 metres by 600 metres. Six holes drilled from two drill pads intersected near-surface, low-angle mineralised quartz veins and veinlets covering an area of 100 metres by 400 metres with an average thickness of 10 metres. SMGC created only one wireframe for the Mafi geological model (Figure 9). Twenty-three (23) boreholes were drilled, but only 12 holes intersected the wireframe.

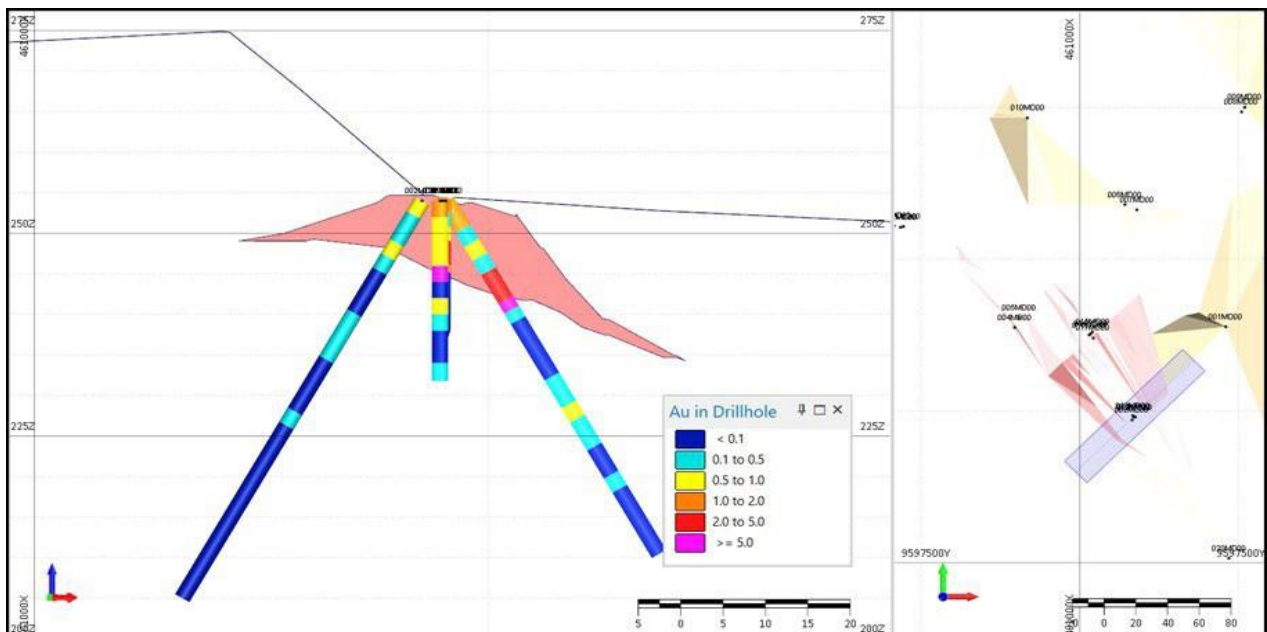


Figure 9: Cross Section of Mafi drillholes showing gold assays relative to modeled mineralization wireframe



Model Validations Completed by SMGC

To compare sample assays against modeled grades validations were completed for Sua, North Bermol and Mafi prospects. Validation could not be completed for Bermol because grade estimation was performed using a weighted average of interval samples within the wireframes.

Validations were performed using three main techniques:

1. Histograms of sample assays and model grades
2. Swath Plots of sample assays and model grades
3. Cross sections depicting boreholes in relation to the block model

Overall, the validation results support that the block models for Sua, North Bermol and Mafi provide a reasonable and geologically consistent representation of the underlying assay data, with appropriate smoothing and no material bias identified in the estimation.

Cut-Off Grade Determination

To satisfy the requirement that there are reasonable prospects for eventual economic extraction, SMGC in estimating the IMI Resource applied a gold cut-off grade. A break-even cutoff grade of 0.1 g/t Au was used for the Resource Estimation. This cut-off grade is based on the formula below:

$$\text{Cut-off Grade} = \text{Cost} / \text{Recovery} / \text{Gold Price}$$

Cost

SMGC determined the cost based on historical data from an open-pit gold mining operation in Indonesia with a deposit similar to IMI. To calculate the breakeven cut-off grade, only processing and G&A costs were included. A cost of **USD 8.06 per tonne** was used to determine this cut-off grade.

Recovery

The metallurgical test work that has been undertaken to determine gold recovery from the deposit areas demonstrated that **50 to 60% of the gold was recoverable by gravity**, while overall recoveries by **Cyanide-in-Leach (CIL) or Resin-in-Leach (RIL) processes exceeded 90%**. In determining the gold recovery for this break-even cut-off grade, SMGC applied a 90% gold recovery.

Gold Price

The gold price was determined based on historical prices over the past 10 years. In 2016 the gold price was approximately USD 1,200/oz. Since then, the gold price has increased considerably to over USD 3,000/oz with a spike of up to USD 5,500/oz in the first quarter of 2026. SMGC has used a gold price of USD 3,329/oz as it is considered a more reliable long-term price to satisfy the "Reasonable Prospects for Eventual Economic Extraction"



Mining and Metallurgical Methods

IMI previously conducted preliminary metallurgical test work on surface rock samples and drill core composites from Sua at its Penjom Laboratory in Malaysia. This work demonstrated that 50 to 60% of the gold was recoverable by gravity, while overall recoveries by Cyanide-in-Leach (CIL) or Resin-in-Leach (RIL) processes exceeded 90%. This indicated that the metallurgy of mineralisation is amenable to standard extraction techniques. Preliminary bottle roll tests on mineralized composites from Bermol indicated 80% recovery. There has been no metallurgical test work at North Bermol or Mafi. In determining the gold recovery for the break-even cut-off grade used, SMGC applied a 90% gold recovery.

Reasonable Prospects for Eventual Economic Extraction

SMGC considered several limits in forming an opinion on reasonable prospects to technical and economic extraction within the next 10 years. The limits form three categories: hard limits such as concession boundaries, technical limits such as maximum depth of extraction and economic limits dependent on price forecasts and costs. These are summarised in Table 3 below.

Category	Limit	Discussion
Hard Limits	Concession Boundary	There is no Resource outside the concession boundary.
	Geological Model Boundary	The geological model is limited by a maximum 100 metres extrapolation from data.
Technical Limit	Pit Slope Angle	As no geotechnical study has been undertaken a slope of 45° has been used for the overall pit slopes.
Economic	SMGC determined mining costs based on historical data from an open pit gold mine in Indonesia which has similar deposit characteristics to the Idenburg deposit.	A total cost of USD 18.55 per tonne has been used to satisfy this RPEEE.
	The gold price assumption was derived from a review of historical trends over the past decade.	SMGC has adopted a gold price of USD 3,329/oz for the Mineral Resource evaluation. This value is considered a reasonable and conservative long-term assumption, appropriate for demonstrating Reasonable Prospects for Eventual Economic Extraction (RPEEE), while avoiding reliance on short-term price volatility.

Table 3: Consideration applied for determination of a reasonable expectation of economic extraction for the Sua, North Bermol, Bermol and Mafi deposit areas.

Considering the factors listed in Table 3, SMGC generated Lerch Grossman optimised pit shells for Sua, North Bermol, Bermol and Mafi resources which were used as a bottom limit in the Inferred resource estimate. See Figures 10 and 11 below which show pit shells for the Sua and North Bermol resources.

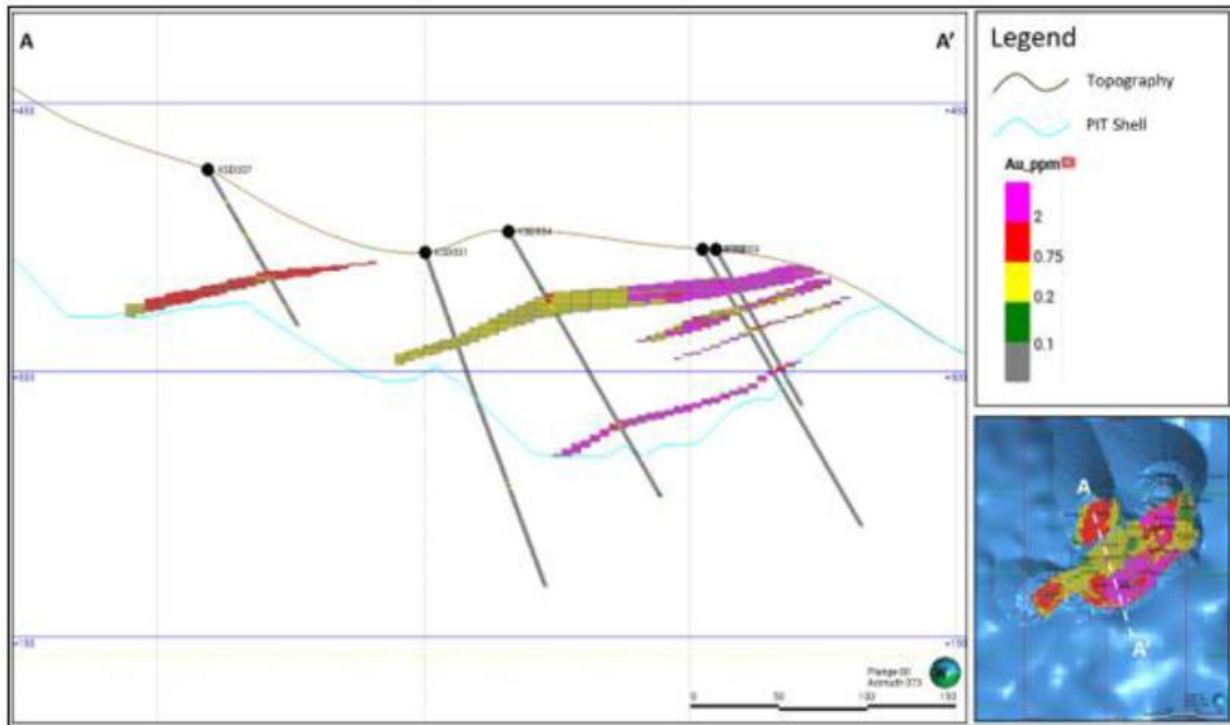


Figure 10: Cross section of optimised pit shell for the Sua prospect. All of the modeled resource blocks are constrained within the pit area.

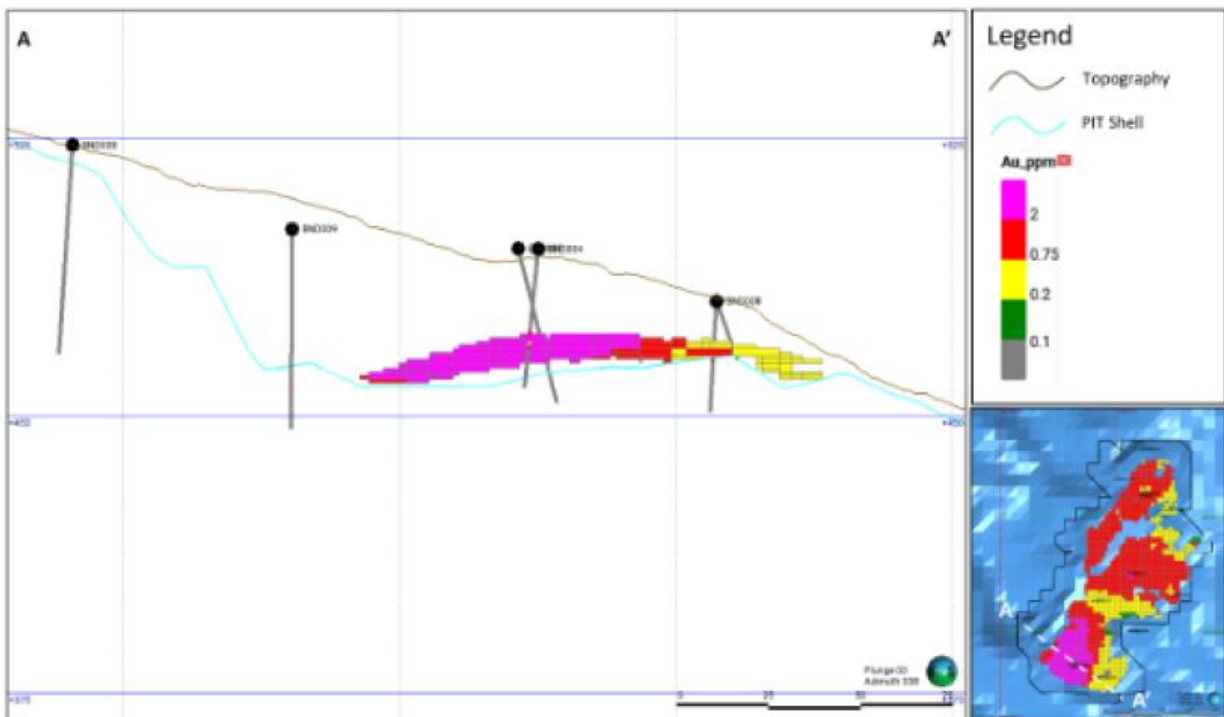


Figure 11: Cross section of optimised pit shell for the North Bermol prospect. All of the modeled resource blocks are constrained within the pit area.



Future Exploration

Further exploration in the Idenburg CoW area is warranted as there is significant potential for further discoveries in the property area particularly within untested prospect areas for which SMGC determined exploration targets for (refer to ASX announcement of August 21, 2024). There is also further potential to expand existing resources within the four prospects areas modeled herein through more detailed prospect exploration and step out and infill drilling.

Future work programs should include:

- An aggressive regional reconnaissance program to refine existing anomalies and define new targets. Work should initially focus on the Mafi River Thrust Fault and the Sua-Afley Shear Zone.
- A revised interpretation of remote-sensed imagery, incorporating new findings from prospect-level exploration, should facilitate vectoring towards potential extensions and/or new areas of mineralisation in the Kali Kae, Tekai, Kimly, and North Bermol Prospects.
- Infill and step-out drilling at Sua, North Bermol, Bermol, and Mafi: Infill drilling will provide better constraints on the initial Inferred Mineral Resource and test for potential steeper feeder structures beneath the thrust. Step-out drilling will confirm the along-strike continuity of the mineralisation and validate the surrounding Gold Exploration Targets.
- Future infill drilling campaigns should be accompanied by comprehensive metallurgical sampling at Sua, North Bermol, Bermol and Mafi.
- A review of pathfinder elements in drill core and soil databases to ascertain vectors to mineralisation for use in prospect-scale programs.
- Application of IP dipole-dipole geophysics to existing prospects to better understand potential extensions.

The Company is currently finalising the budget to conduct a comprehensive exploration program to include the SMGC recommendations.



COMPETENT PERSON'S STATEMENT

The information in this announcement that relates to The Mineral Resource information is derived from the SMG Consultants report titled 'JORC Resource Report, PT Iriana Mutiara Idenburg, March 2026'. SMG Consultants has consented to the use of extracts from that report in the form and context in which they appear.

Mineral Resources for the Idenburg Gold Project is based on, and fairly represents, information and supporting documentation prepared by SMG Consultants Principal Geologist Mr Abdullah Dahlan, a Competent Person according to the requirements of the 2012 Edition of the Australasian Code for Reporting of Exploration Results, Mineral Resources and Ore Reserves as a Member of the Australasian Institute of Mining and Metallurgy. He is employed by SMGC and has sufficient experience which is relevant to the style of mineralisation and type of deposit considered and has consented to the inclusion in this announcement of the matters based on his information in the form and context in which they appear.

Information in this announcement that relates to previously reported Exploration Targets and historical Mineral Resource information is based on reports prepared by SMG Consultants titled 'PT Iriana Mutiara Idenburg Exploration Target Report, June 2024' and 'JORC Resource Report, PT Iriana Mutiara Idenburg, December 2024'. Far East Gold (FEG) confirms that it is not aware of any new information or data that materially affects the information or interpretations included in those previous reports or related announcements, and that all material assumptions and technical parameters underpinning those previous announcements continue to apply and have not materially changed.

Michael C Corey, a Member of the Association of Professional Geoscientists of Ontario, Canada, and an employee of Far East Gold Limited, has reviewed the Company's summary of the technical information included in the prepared announcement for consistency with the source reports. This review does not replace the Competent Person consent provided by Mr Abdullah Dahlan in respect of the Mineral Resource Estimate.

ABOUT FAR EAST GOLD

Far East Gold Limited (ASX: FEG) is an ASX listed copper/gold exploration company with six advanced projects in Australia and Indonesia. This Release has been approved by the FEG Board of Directors.

FURTHER INFORMATION:

Sign up to the Far East Gold investor hub to receive important news and updates directly to your inbox, and to engage directly with our leadership team:

<https://investorhub.fareast.gold/auth/signup>

Justin Werner
Chairman

[e: justin.werner@fareast.gold](mailto:justin.werner@fareast.gold)

Shane Menere
Chief Executive Officer

[e: shane.menere@fareast.gold](mailto:shane.menere@fareast.gold)
m: + 61 406 189 672
+ 62 811 860 8378

Tim Young
Investor Relations & Capital Markets

[e: tim.young@fareast.gold](mailto:tim.young@fareast.gold)
m: + 61 484 247 771



APPENDIX 1

Significant Intersection Tables for IMI and FEG Drillholes included within the Updated Idenburg Inferred JORC 2012 Mineral Resource Estimate

Of the 22 boreholes drilled at Sua, 19 boreholes intersected the mineralised intervals with apparent true widths ranging from 2 m to 33 m.

1. **Compiled Significant Drill Hole Intercepts from the First IMI Drill Program at Sua (0.5 g/t Au Cut-Off, 41 g/t Au Top Cut, Maximum Internal Waste of 2m). Map coordinates conform to the WGS 84 / UTM Zone 54S reference system.**

Hole ID	East (m)	North (m)	RL (m)	Azimuth (°)	Dip (°)	Depth (m)	From (m)	To (m)	Interval (m)	Grade (g/t Au)	Comments
KSD001	447,122	9,593,700	386	160	-60	150.3	0.0	16.0	16.0	2.38	
							22.0	26.0	4.0	2.31	
							29.0	30.0	1.0	0.53	
							33.0	38.0	5.0	1.69	
							41.0	45.0	4.0	5.96	
							65.0	69.0	4.0	1.94	
KSD002	447,037	9,593,649	355	160	-60	179.85	21.0	28.5	7.5	13.6	
							38.0	41.0	3.0	0.64	
							52.0	54.0	2.0	0.59	
							78.0	80.0	2.0	8.78	
KSD003	446,914	9,593,701	342	160	-60	150.4	50.0	51.0	1.0	0.53	
							74.0	75.0	1.0	3.08	
KSD004	447,003	9,593,753	378	160	-60	172.1	41.0	46.0	5.0	0.96	
							49.0	50.0	1.0	0.58	
							123.0	125.0	2.0	17.2	
KSD005	447,100	9,593,823	409	160	-60	144.9	80.0	89.0	9.0	4.00	
							93.0	97.0	4.0	1.24	
							100.0	102.0	2.0	0.68	
							112.0	113.0	1.0	1.21	
							118.0	119.0	1.0	1.96	
							127.0	128.0	1.0	0.51	
KSD006	447,061	9,593,916	404	160	-60	90	20.0	21.0	1.0	1.30	
KSD007	446,957	9,593,916	412	160	-60	102.2	32.0	33.0	1.0	1.25	
							42.0	43.0	1.0	0.52	
							56.0	57.0	1.0	1.25	
							66.0	67.0	1.0	1.71	
							71.0	72.0	1.0	5.25	

*Note: Individual gold assays were cut to 41 g/t Au for intercept calculations.



Hole ID	East (m)	North (m)	RL (m)	Azimuth (°)	Dip (°)	Depth (m)	From (m)	To (m)	Interval (m)	Grade (g/t Au)	Comments
KSD008	447,204	9,593,866	445	160	-60	129.3	70.0	71.0	1.0	3.18	
							107.0	112.0	5.0	21.8	Incl. 3m @ 35.0 g/t Au from 107m
							126.0	128.0	2.0	0.76	
KSD010	447,169	9,593,778	401	160	-60	149.8	0.0	18.0	18.0	2.05	
							24.0	32.0	8.0	1.01	
							36.0	38.0	2.0	0.66	
							44.0	52.0	8.0	2.58	Incl. 1m @ 14.3 g/t Au from 44m
							55.0	58.0	3.0	17.7	
							64.0	67.0	3.0	2.00	
							71.0	75.0	4.0	0.66	

*Note: Individual gold assays were cut to 41 g/t Au for intercept calculations.



Compiled Significant Drill Hole Intercepts from the Second IMI Drill Program at Sua (0.5 g/t Au Cut-Off, 41g/t Au Top Cut, Maximum Internal Waste of 2m)

Hole ID	East (m)	North (m)	RL (m)	Azimuth (°)	Dip (°)	Depth (m)	From (m)	To (m)	Interval (m)	Grade (g/t Au)	Comments
KSD011	447,227	9,593,775	389	155	-60	160	0.0	6.0	6.0	0.83	
							21.0	24.0	3.0	5.91	
							38.0	45.0	7.0	0.96	
							52.0	53.0	1.0	0.67	
							63.0	64.0	1.0	3.43	
							75.0	76.0	1.0	1.96	
							94.0	95.0	1.0	1.74	
KSD013	447,176	9,593,692	366	166	-57	98.2	0.0	7.0	7.0	3.29	
							10.0	16.0	6.0	8.22	
KSD014	446,969	9,593,650	355	160	-57.8	98	4.0	5.0	1.0	0.51	
							11.0	13.0	2.0	2.25	
							51.0	52.0	1.0	2.37	
							70.0	74.0	4.0	0.71	
KSD015	446,784	9,593,615	341	163	-60	120	15.0	16.0	1.0	0.54	
							22.0	24.0	2.0	2.75	
							34.0	35.0	1.0	0.57	
							41.0	42.0	1.0	1.88	
KSD016	447,271	9,593,839	411	160	-60	136	33.0	40.0	7.0	0.73	
							46.0	47.0	1.0	0.70	
							66.0	67.0	1.0	0.70	
							70.0	71.0	1.0	0.60	
							78.0	79.0	1.0	0.91	
							127.0	129.0	2.0	0.58	
KSD017	447,148	9,593,861	428	163	-60	97	44.0	46.0	2.0	1.06	
							68.0	69.0	1.0	2.18	
							84.0	87.0	3.0	0.96	
KSD019	447,395	9,594,053	406	150	-60	119	41.0	44.0	3.0	0.41	
							56.0	57.0	1.0	1.19	
KSD021	447,169	9,593,778	401	160	-90	88	10.0	11.0	1.0	1.47	
							50.0	54.0	4.0	1.24	
							75.0	78.0	3.0	9.56	

Hole ID	East (m)	North (m)	RL (m)	Azimuth (°)	Dip (°)	Depth (m)	From (m)	To (m)	Interval (m)	Grade (g/t Au)	Comments
KSD022	447,122	9,593,700	386	305	-90	82.7	0.0	17.0	17.0	2.88	
							35.0	43.0	8.0	1.43	
							47.0	48.0	1.0	0.95	
							70.0	71.0	1.0	3.35	

Note: - Individual gold assays were cut to 41 g/t Au for intercept calculations.

All holes were drilled from the surface using conventional triple-tube diamond drilling techniques. Core recoveries exceeded 90% for all mineralised intervals reported.



2. Compiled Significant Intercepts from the FEG Drill Program at Sua for Drillholes Included within the Updated Idenburg Inferred JORC 2012 Mineral Resource Estimate (0.2 g/t Au cut-off, with no grade top cut, and a maximum internal dilution of 3m). Map coordinates conform to the WGS 84 / UTM Zone 54S reference system.

Hole ID	East	North	RL	Azimuth	Dip	Depth	From	To	Interval	Grade
KSD023	447043	9593843	387	160	-60	100	18.5	28.3	9.80	13.77
FEG							20	25.3	5.30	24.08
incl							24.5	25.3	0.80	131.00
and							24.9	25.3	0.40	180.00
							35.9	36.9	1.00	0.92
							75.6	76.6	1.00	0.99
KSD024	447053	9593885	394	160	-60	120	0	1	1.00	0.26
FEG							23.5	59	35.50	8.59
incl							24.5	25.3	0.80	252.50
and							46	49	3.00	18.08
and							56	58	2.00	10.87
							63	64	1.00	0.28
							98	100	2.00	0.66
KSD025	447203	9593889	457	160	-60	200	68	70	2.00	3.16
FEG							86	87	1.00	0.77
							89.5	90.5	1.00	0.30
							95.3	95.7	0.40	6.54
							106.3	114	7.70	8.42
incl							106.3	107	0.70	34.65
and							109	110.5	1.50	6.36
and							111.7	112.3	0.60	35.29
							125	125.5	0.50	26.43
KSD026	447190	9593900	467	160	-70	260	67.5	68	0.50	0.51
FEG							87.7	88.2	0.50	0.75
							120	124.5	4.50	8.82
incl							122	123	1.00	37.14
incl							122.5	123	0.50	51.00
							132.5	145	12.50	2.10
incl							135.9	138	2.10	8.54
KSD027	447245	9593895	447	160	-65	230	14.4	16.1	1.70	8.55
FEG							14.4	15.1	0.70	20.28
							42	43	1.00	0.69
							50	50.5	0.50	0.82
							56	61.5	5.50	0.35
incl							58.5	59	0.50	1.67
							65.4	67	1.60	0.39
							73.85	78.7	4.85	49.47



(cont'd) Compiled Significant Drill Hole Intercepts from the FEG Drill Program at Sua for Drillholes Included within the Updated Idenburg Inferred JORC 2012 Mineral Resource Estimate (0.2 g/t Au cut-off, with no grade top cut, and a maximum internal dilution of 3m)

Hole ID	East	North	RL	Azimuth	Dip	Depth	From	To	Interval	Grade
incl							73.85	77.7	3.85	62.12
and							74.5	75.5	1.00	93.00
and							77.15	77.7	0.55	175.00
							95	96.65	1.65	4.25
incl							96.15	96.65	0.50	11.20
							112.9	113.7	0.80	5.51
							197.7	198.2	0.50	0.92
KSD028	447280	9593939	449	160	-60	220	44.7	45.7	1.00	0.35
							57.25	57.75	0.50	0.50
KSD029	447334	9593963	431	160	-60	135.5	14.9	15.3	0.40	0.28
							56.8	57.3	0.50	0.36
							58.2	58.7	0.50	0.22
KSD030	447071	9593865	429	160	-60	220	88	90	2.00	0.77
							91.7	92.2	0.50	0.39
							96.8	97.3	0.50	8.09
							105.1	105.8	0.70	1.88
							108.5	109	0.50	2.33
							113.7	116.5	2.80	0.51
							120.3	120.8	0.50	0.61
							193	193.5	0.50	0.43
							194.8	193.5	0.70	0.88
KSD031	446993	9593799	400	160	-70	200	52.6	55.5	2.90	1.02
							53.75	54.3	0.55	2.35
							137.1	137.7	0.55	0.45
							140.5	141.5	1.00	0.39
KSD032	446907	9593751	381	165	-70	150.5	34	34.5	0.50	0.48
							108.8	109.3	0.50	1.80
KSD033	447245	9593895	447	340	-73	220	17.1	18.75	1.65	10.29
							23.75	24.25	0.50	0.76
							90.2	98.8	8.60	2.12
							97.2	98.2	1.00	8.55
							151.2	151.8	0.65	0.89
KSD034	447162	9593970	487	160	-75	300	147	148	1.00	0.34
							149.7	150.1	0.40	1.38
							177	180.9	3.90	2.57
							178	179	1.00	7.92

Cont'd below



(cont'd) Compiled Significant Drill Hole Intercepts from the FEG Drill Program at Sua for Drillholes Included within the Updated Idenburg Inferred JORC 2012 Mineral Resource Estimate (0.2 g/t Au cut- off, with no grade top cut, and a maximum internal dilution of 3m)

Hole ID	East	North	RL	Azimuth	Dip	Depth	From	To	Interval	Grade
							73.85	77.7	3.85	62.12
incl										
and							74.5	75.5	1.00	93.00
and							77.15	77.7	0.55	175.00
							95	96.65	1.65	4.25
incl							96.15	96.65	0.50	11.20
							112.9	113.7	0.80	5.51
							197.7	198.2	0.50	0.92
KSD028	447280	9593939	449	160	-60	220	44.7	45.7	1.00	0.35
							57.25	57.75	0.50	0.50
KSD029	447334	9593963	431	160	-60	135.5	14.9	15.3	0.40	0.28
							56.8	57.3	0.50	0.36
							58.2	58.7	0.50	0.22
KSD030	447071	9593865	429	160	-60	220	88	90	2.00	0.77
							91.7	92.2	0.50	0.39
							96.8	97.3	0.50	8.09
							105.1	105.8	0.70	1.88
							108.5	109	0.50	2.33
							113.7	116.5	2.80	0.51
							120.3	120.8	0.50	0.61
							193	193.5	0.50	0.43
							194.8	193.5	0.70	0.86
KSD031	446993	9593799	400	160	-70	200	52.6	55.5	2.90	1.02
							53.75	54.3	0.55	2.35
							137.1	137.7	0.55	0.45
							140.5	141.5	1.00	0.39
KSD032	446907	9593751	381	165	-70	150.5	34	34.5	0.50	0.48
							108.8	109.3	0.50	1.80
KSD033	447245	9593895	447	340	-73	220	17.1	18.75	1.65	10.29
							23.75	24.25	0.50	0.76
							90.2	98.8	8.60	2.12
							97.2	98.2	1.00	8.55
							151.2	151.8	0.65	0.89
KSD034	447162	9593970	487	160	-75	300	147	148	1.00	0.34
							149.7	150.1	0.40	1.38
							177	180.9	3.90	2.57
							178	179	1.00	7.92

Cont'd below



Hole ID	East	North	RL	Azimuth	Dip	Depth	From	To	Interval	Grade
KSD035	447207	9594057	524	155	-65	289	142.8	144.2	1.45	5.24
							142.8	143.7	0.95	7.21
							177	177.5	0.50	4.73
							208.5	215.9	7.40	1.18
							212.3	212.9	0.60	4.97
							240	242.6	2.60	0.36

3. Compiled Significant Drill Hole Intercepts from the IMI Drill Program at Mafi (0.5 g/t Au Cut- Off, 50 g/t Au Top Cut, Maximum Internal Waste of 2m). Map coordinates conform to the WGS 84 / UTM Zone 54S reference system.

Hole ID	East (m)	North (m)	RL (m)	Azimuth (°)	Dip (°)	Depth (m)	From (m)	To (m)	Interval (m)	Grade (g/t Au)	Comments
002MD00	461,033	9,597,594	254	224.9	-60	56.6	0.0	2.0	2.00	0.88	
							6.0	8.0	2.00	0.52	
003MD00	461,035	9,597,596	254	44.9	-60	50.3	0.0	15.5	15.50	2.27	
							29.0	31.0	2.00	0.75	
005MD00	460,962	9,597,662	282	44.9	-60	80.1	4.0	16.0	12.00	1.02	
007MD00	461,036	9,597,733	282	115	-78	81.9	2.0	3.0	1.00	0.80	
014MD00	461,007	9,597,651	283	4.9	-90	72.8	6.0	18.6	12.60	8.01	Incl. 1.25m @ 25.7 g/t Au from 15.75m
015MD00	461,008	9,597,652	283	49.9	-60	99.7	4.0	6.0	2.00	0.50	Incl. 2m @ 6.96 g/t Au from 12m
							12.0	20.0	8.00	2.72	
016MD00	461,006	9,597,650	283	224.9	-60	63.0	13.0	15.0	2.00	0.80	
							19.0	21.0	2.00	0.53	
							49.0	51.0	2.00	0.55	
017MD00	461,009	9,597,648	283	134.9	-60	74.5	4.0	10.0	6.00	2.99	Incl. 2m @ 7.50 g/t Au from 6m
							14.4	22.5	8.10	7.50	Incl. 1.4m @ 16.3 g/t Au from 18m
							54.0	56.0	2.00	0.50	
018MD00	461,034	9,597,597	254	314.9	-60	41.4	0.0	10.5	10.50	1.55	
019MD00	461,034	9,597,596	254	4.9	-90	22.2	0.0	14.0	14.00	1.53	

Note: - Individual gold assays were cut to 50 g/t Au for intercept calculations.

- All holes were drilled from the surface using conventional triple-tube diamond drilling techniques. Core recoveries exceeded 90% for all mineralised intervals reported.



4. Compiled Significant Drill Hole Intercepts from the Initial IMI Drill Program at Bermol (0.5 g/t Au Cut-Off, 15 g/t Au Top Cut, Maximum Internal Waste of 2m). Map coordinates conform to the WGS 84 / UTM Zone 54S reference system.

Hole ID	East (m)	North (m)	RL (m)	Azimuth (°)	Dip (°)	Depth (m)	From (m)	To (m)	Interval (m)	Grade (g/t Au)	Comments
BRD001	462,049	9,587,026	878	151	-75	151.0	16.0	21.0	5.0	5.40	Incl. 2m @ 11.8 g/t Au from 17m
BRD003	462,000	9,587,400	762	85	-70	127.9	46.0	51.0	5.0	4.15	Incl. 3m @ 7.08 g/t Au from 46m
BRD004	462,014	9,587,674	638	58	-72	98.1	12.0	17.0	5.0	1.07	
BRD005	462,312	9,587,529	767	60	-78	94.0	2.0	4.0	2.0	3.00	
BRD006	461,982	9,587,536	705	80	-70	111.5	65.0	72.0	7.0	2.78	Incl. 4m @ 4.15 g/t Au from 66m
BRD007	462,254	9,587,384	785	115	-80	100.0	0.0	3.0	3.0	4.89	

Note: - Individual gold assays were cut to 15 g/t Au for intercept calculations.

- All holes are drilled from the surface using conventional triple-tube diamond drilling techniques. Core recoveries exceeded 90% for all mineralised intervals reported.



5. Compiled Significant Intercepts from the FEG Drill Program at North Bermol for Drillholes Included within the Updated Idenburg Inferred JORC 2012 Mineral Resource Estimate (0.2 g/t Au cut-off, with no grade top cut, and a maximum internal dilution of 3m). Map coordinates conform to the WGS 84 / UTM Zone 54S reference system.

Hole ID	East	North	RL	Azimuth	Dip	Depth	From	To	Interval	Grade
BND001	462350	9588835	485	180	-45	59.9	No Significant Intersections			
BND002	462350	9588835	485	0	-90	50.2	No Significant Intersections			
BND003	462697	9589860	367	290	-45	100.8	0	1.1	1.10	0.32
							11.3	13.9	2.60	3.99
incl							12.4	12.9	0.50	15.01
BND004	462523	9589735	433	225	-73	50	23.5	28.5	5.00	4.9
							24.8	26.4	1.60	12.85
							28.1	28.5	0.40	1.09
BND005	462520	9589740	435	55	-58	49.1	32	34.8	2.80	8.44
							33.2	34.8	1.60	12.3
incl							33.2	34	0.80	16.59
BND006	462570	9589717	417	225	-79	30.1	13.9	17	3.10	1.13
incl							14.4	14.9	0.50	2.59
BND007	462570	9589717	417	57	-45	40.2	27.95	36.2	8.25	0.78
							30.5	32.2	1.70	2
BND008	462429	9589820	458	225	-70	150.2	No Significant Intersections			
BND009	462468	9589773	445	225	-90	54	42.5	43	0.50	3.11
BND010	462653	9589639	390	280	-60	60.3	No Significant Intersections			
BND011	462641	9590032	374	225	-50	31.4	24.6	27.3	2.70	3.19
incl							25.65	26.2	0.55	5.77
BND012	462645	9590037	374	45	-68	40.5	27.65	30	2.35	2.81
incl							28.3	29.2	0.90	6.32
							38	38.6	0.60	2.4
BND013	462180	9588899	536	180	-65	40	20.15	21.1	0.95	2.85
incl							20.6	21.1	0.50	3.81

Cont'd below



(cont'd) Compiled Significant Drill Hole Intercepts from the FEG Drill Program at North Bermol for Drillholes Included within the Updated Idenburg Inferred JORC 2012 Mineral Resource Estimate (0.2 g/t Au cut-off, with no grade top cut, and a maximum internal dilution of 3m)

Hole ID	East	North	RL	Azimuth	Dip	Depth	From	To	Interval	Grade
BND014	462080	9588883	559	180	-65	50	No Significant Intersections			
BND015	462079.4	9588883	559	0	-45	59.6	No Significant Intersections			
BND016	462623	9589798	403	0	-90	25.3	No Significant Intersections			
BND017	462561	9589850	418	0	-90	29.3	5.9	7	1.10	0.99
incl							6.3	7	0.70	1.17
BND018	462621	9589898	385	0	-90	40	20.3	23.3	3.00	3.12
incl							20.9	22.3	1.40	6.14
and							21.75	22.3	0.55	8.71
BND019	462600	9590061	384	0	-90	45	35.05	35.5	1.45	1.45
BND020	462685.6	9590008	363	0	-90	20	5.4	5.9	0.50	0.99
BND021	462649	9590114	368	0	-90	32.9	25.9	28.9	3.00	1.06
BND023	462400	9589645	452	0	-90	95	71.4	76	4.60	1.36
							74.5	75.5	1.00	3.12
BND024	462279	9589548	496	0	-90	149	130.1	131.75	1.65	1.71
							130.6	131	0.40	5.58
							134.5	135.25	0.75	0.71
BND025	462209	9589508	525	225	-85	182.4	No Significant Intersections			



JORC Code, 2012 Edition – Table 1

Section 1 Sampling Techniques and Data (Criteria in this section apply to all succeeding sections.)

Criteria	JORC Code explanation	Commentary
Sampling techniques	<ul style="list-style-type: none"> Nature and quality of sampling (eg cut channels, random chips, or specific specialised industry standard measurement tools appropriate to the minerals under investigation, such as down-hole gamma sondes, or handheld XRF instruments, etc). These examples should not be taken as limiting the broad meaning of sampling. Include reference to measures taken to ensure sample representivity and the appropriate calibration of any measurement tools or systems used. Aspects of the determination of mineralisation that are Material to the Public Report. In cases where 'industry standard' work has been completed this would be relatively simple (eg 'reverse circulation drilling was used to obtain 1 m samples from which 3 kg was pulverised to produce a 30 g charge for fire assay'). In other cases more explanation may be required, such as where there is coarse gold that has inherent sampling problems. Unusual commodities or mineralisation types (eg submarine nodules) may warrant disclosure of detailed information. 	<ul style="list-style-type: none"> All FEG Sua drill core was digitally photographed and logged by FEG project geologists. Core with any potential for mineralisation was marked up for sampling and dispatched to an analytical laboratory for geochemical analysis. Only visually obvious non-mineralised core was not sampled. Selected historical drill holes were relogged by FEG to ensure logging consistency. Cut, half core was selected for geochemical analysis. The drill core sample intervals range from 0.5 to 1.50 m in length. All half core samples were jaw-crushed and split onsite in the Company operated core facility. Sample packets of 500g were put into woven polysacks by site personnel and air freighted to PT.Geoservices in Bekasi, West Java, Indonesia. Additional sample preparation and assays were undertaken by the independent Pt. Geoservices laboratory in Bekasi, Indonesia. Gold analyses of all drill core samples were by fire assay with atomic absorption spectrometry (AAS) finish of a 50g sample, with a detection limit of 0.01 g/t Au (method FAA50). For the determination of base metal AAS analytes the GAI02_ICP analytical methods – with detection limits of Ag (0.5 ppm) and Cu, Pb, Zn (each 5 ppm) and 1 ppm detection limit for As
Drilling techniques	<ul style="list-style-type: none"> Drill type (eg core, reverse circulation, open-hole hammer, rotary air blast, auger, Bangka, sonic, etc) and details (eg core diameter, triple or standard tube, depth of diamond tails, face-sampling bit or other type, whether core is oriented and if so, by what method, etc). 	<ul style="list-style-type: none"> Triple tube diamond core drilling – fully drilled with diamond bit with PQ collar. Core diameter was mostly HQ, reducing to NQ at depth. Down-hole surveying was routinely conducted at 30 m intervals. Core orientation was measured using a MagCruiser MM105 from Stockholm Precision Tools. Core was fitted together and marked up for sampling by a geologist, and where loose fragments were seen core was wrapped in masking tape prior to the core sawn in half.



Criteria	JORC Code explanation	Commentary
Drill sample recovery	<ul style="list-style-type: none"> • Method of recording and assessing core and chip sample recoveries and results assessed. • Measures taken to maximise sample recovery and ensure representative nature of the samples. • Whether a relationship exists between sample recovery and grade and whether sample bias may have occurred due to preferential loss/gain of fine/coarse material. 	<ul style="list-style-type: none"> • All core sample recovery recorded in both hard copy and digital logging sheets and recovery results assessed by project geologists. • No significant drilling problems encountered resulted in very good core recoveries. • Statistical analyses indicate no relationship between grade and recovery.
Logging	<ul style="list-style-type: none"> • Whether core and chip samples have been geologically and geotechnically logged to a level of detail to support appropriate Mineral Resource estimation, mining studies and metallurgical studies. • Whether logging is qualitative or quantitative in nature. Core (or costean, channel, etc) photography. • The total length and percentage of the relevant intersections logged. 	<ul style="list-style-type: none"> • All drill holes were logged by geologists. • All logging data recorded intervals from and to, including lithology, mineralisation, alteration, sulphides seen, detailed structure and geotechnical characteristics. • All core was photographed both dry and wet. • All samples that were identified as having any potential mineralisation were assayed.
Sub-sampling techniques and sample preparation	<ul style="list-style-type: none"> • If core, whether cut or sawn and whether quarter, half or all core taken. • If non-core, whether riffled, tube sampled, rotary split, etc and whether sampled wet or dry. • For all sample types, the nature, quality and appropriateness of the sample preparation technique. • Quality control procedures adopted for all sub-sampling stages to maximise representivity of samples. • Measures taken to ensure that the sampling is representative of the in-situ material collected, including for instance results for field duplicate/second-half sampling. • Whether sample sizes are appropriate to the grain size of the material being sampled. 	<ul style="list-style-type: none"> • Core samples were logged and all intervals for analysis were marked up by FEG geologists, at 0.5 and 1 meter intervals. • Core samples for analyses were cut into half and collected by experienced FEG personnel. • drill core sample intervals range from 0.5 to 1.5 m in core length. • Selected quarter core samples were assayed for quality assurance and quality control analysis as field duplicates.
Quality of assay data and laboratory tests	<ul style="list-style-type: none"> • The nature, quality and appropriateness of the assaying and laboratory procedures used and whether the technique is considered partial or total. • For geophysical tools, spectrometers, handheld XRF instruments, etc, the parameters used in determining the analysis including instrument make and model, reading times, calibrations factors applied and their derivation, etc. 	<ul style="list-style-type: none"> • All samples were dispatched to the independent laboratory Pt.Geoservices in Bekasi • Certified reference samples and blank and field duplicate samples were submitted at a rate of one each per 20 samples.
	<ul style="list-style-type: none"> • Nature of quality control procedures adopted (eg standards, blanks, duplicates, external laboratory checks) and whether acceptable levels of accuracy (ie lack of bias) and precision have been established. 	



Criteria	JORC Code explanation	Commentary
Verification of sampling and assaying	<ul style="list-style-type: none"> • The verification of significant intersections by either independent or alternative company personnel. • The use of twinned holes. • Documentation of primary data, data entry procedures, data verification, data storage (physical and electronic) protocols. • Discuss any adjustment to assay data. 	<ul style="list-style-type: none"> • Data entry involves constructing Excel and Access spreadsheets directly from final laboratory assay reports delivered electronically in PDF and Excel format. • Database verified by FEG exploration manager, including all significant drill intersections. • Data stored in company server located in Jakarta, Indonesia.
Location of data points	<ul style="list-style-type: none"> • Accuracy and quality of surveys used to locate drill holes (collar and down-hole surveys), trenches, mine workings and other locations used in Mineral Resource estimation. • Specification of the grid system used. • Quality and adequacy of topographic control. 	<ul style="list-style-type: none"> • Drilling and surface rock sampling grid (Northing, Easting and elevation) was established with handheld GPS control and tape and compass surveyed in the rugged terrain. • Drill hole collars and all sample points will be picked up by contract surveyor at completion of drilling program. • The existing topographic survey is considered adequate for the current DTM. Minor local discrepancies are evident and further survey work will be required should further Resource definition ensue. • Grid system used is Universal Transverse Mercator (WGS 84) UTM Zone 54, Southern Hemisphere.
Data spacing and distribution	<ul style="list-style-type: none"> • Data spacing for reporting of Exploration Results. • Whether the data spacing and distribution is sufficient to establish the degree of geological and grade continuity appropriate for the Mineral Resource and Ore Reserve estimation procedure(s) and classifications applied. • Whether sample compositing has been applied. 	<ul style="list-style-type: none"> • Drill hole spacing and drill section spacing was as close to 100 m as the rugged ground conditions allowed. • Drilling has verified the historical mapping and trenching that identified intense shear and fault related deformation. Samples are not composited for analysis.
Orientation of data in relation to geological structure	<ul style="list-style-type: none"> • Whether the orientation of sampling achieves unbiased sampling of possible structures and the extent to which this is known, considering the deposit type. • If the relationship between the drilling orientation and the orientation of key mineralised structures is considered to have introduced a sampling bias, this should be assessed and reported if material. 	<ul style="list-style-type: none"> • Drill sections are oriented perpendicular to main strike of shallow dipping vein structures. • Most holes were drilled on section. • Vertical and mostly inclined holes were drilled, depending on the interpreted orientation of the shear/fault zone hosting the mineralisation. • The orientation of the drilling is considered adequate for an unbiased assessment with respect to interpreted structural controls of mineralisation.
Sample security	<ul style="list-style-type: none"> • The measures taken to ensure sample security. 	<ul style="list-style-type: none"> • All core sample recovery recorded in both hard copy and digital logging sheets and recovery results assessed by project geologists. • No significant drilling problems encountered resulted in very good core recoveries. • Statistical analyses indicate no relationship between grade and recovery.



Criteria	JORC Code explanation	Commentary
Audits or reviews	<ul style="list-style-type: none"> The results of any audits or reviews of sampling techniques and data. 	<p>Sampling procedures and data collection are frequently reviewed by FEG exploration staff. No independent audit of sampling methodologies has been done.</p>
Mineral tenement and land tenure status	<ul style="list-style-type: none"> Type, reference name/number, location and ownership including agreements or material issues with third parties such as joint ventures, partnerships, overriding royalties, native title interests, historical sites, wilderness or national park and environmental settings. The security of the tenure held at the time of reporting along with any known impediments to obtaining a license to operate in the area. 	<ul style="list-style-type: none"> A 6th generation Contract of Work (COW) between PT. Iriana Mutiara Idenburg (IMI) and the Government of the Republic of Indonesia signed on 28 April 1997 Project Area covers 95,280 hectares. No further partial relinquishments required. COW currently in Exploration Period. 30 year production period with possible 2 x 10 year extensions. Obligations and commitments governed by COW amended to conform to 2009 Mining Law.
Exploration done by other parties	<ul style="list-style-type: none"> Acknowledgment and appraisal of exploration by other parties. 	<ul style="list-style-type: none"> Known historical mineral prospects and Resources were located and documented by previous IMI tenure holders. Acknowledgment and appraisal of exploration by other parties include Barrick Gold Corporation and Avocet Mining under Joint Venture, Placer Dome under Exclusive Option Period and Minorco, Newcrest Mining, Newmont Mining under confidential due diligence investigations. ACA Howe International Ltd. compiled an independent technical report on the key prospective targets within the COW held by IMI. SMGC in Jakarta completed an Exploration Target Assessment and a Maiden inferred JORC resource estimate for FEG in 2024.



Section 2 Reporting of Exploration Results
(Criteria listed in the preceding section also apply to this section.)

Criteria	JORC Code explanation	Commentary
Geology	<ul style="list-style-type: none"> • Deposit type, geological setting and style of mineralisation. 	<ul style="list-style-type: none"> • All gold prospects are located within the exotic Idenburg Inlier terrane, an approximately 30x30km block of amphibolite facies metamorphic rocks hosting dismembered ophiolites emplaced along regionally extensive thrust faults. • Tectonic setting is on edge of Pacific Rim, in complex collisional zone between Northward creeping Australian continental plate and oceanic Pacific Plate drifting to Southwest. • Style of gold mineralisation as determined from field observations including mapping and drill core logging is of the orogenic gold type, also referred as mesothermal lode gold. Repeated petrographic investigations suggest the presence of auriferous, sheared quartz veins in metamorphic rocks with alteration assemblages seen and fluid inclusion homogenisation temperatures indicate that orogenic lode gold deposits are present.
Drill hole Information	<ul style="list-style-type: none"> • A summary of all information material to the understanding of the exploration results including a tabulation of the following information for all Material drill holes: <ul style="list-style-type: none"> - Easting and Northing of the drill hole collar - elevation or RL (Reduced Level – elevation above sea level in metres) of the drill hole collar - dip and azimuth of the hole - down-hole length and interception depth - hole length. • If the exclusion of this information is justified on the basis that the information is not Material and this exclusion does not detract from the understanding of the report, the Competent Person should clearly explain why this is the case. 	<ul style="list-style-type: none"> • Drill hole collar details were provided in the included Table and shown on the included plan map.
Data aggregation methods	<ul style="list-style-type: none"> • In reporting Exploration Results, weighting averaging techniques, maximum and/or minimum grade truncations (eg cutting of high grades) and cut-off grades are usually Material and should be stated. • Where aggregate intercepts incorporate short lengths of high grade results and longer lengths of low grade results, the procedure used for such aggregation should be stated and some typical examples of such aggregations should be shown in detail. • The assumptions used for any reporting of metal equivalent values should be clearly stated. 	<ul style="list-style-type: none"> • Significant assay intersections were calculated using a 0.2 g/t Au cut-off with no top-cut and maximum 3m of internal dilution. • Samples of variable lengths were weighted when present as part of calculating significant assay intersection. • No grade equivalents are reported.



Criteria	JORC Code explanation	Commentary
Relationship between mineralisation widths and intercept lengths	<ul style="list-style-type: none"> • These relationships are particularly important in the reporting of Exploration Results. • If the geometry of the mineralisation with respect to the drill hole angle is known, its nature should be reported. • If it is not known and only the down-hole lengths are reported, there should be a clear statement to this effect (eg 'down-hole length, true width not known'). 	<ul style="list-style-type: none"> • The drill targets were tested with the aim of intersecting the interpreted structural features as perpendicular as possible to the strike, based on the geological interpretation from historical data and determined from surface creek mapping and mapping of fault/shear zone exposures. • Results are reported as down-hole widths, in most cases, true width is approximately 80-85 % of down-hole length.
Diagrams	<ul style="list-style-type: none"> • Appropriate maps and sections (with scales) and tabulations of intercepts should be included for any significant discovery being reported These should include, but not be limited to a plan view of drill hole collar locations and appropriate sectional views. 	<ul style="list-style-type: none"> • Not Applicable.
Balanced reporting	<ul style="list-style-type: none"> • Where comprehensive reporting of all Exploration Results is not practicable, representative reporting of both low and high grades and/or widths should be practiced to avoid misleading reporting of Exploration Results. 	<ul style="list-style-type: none"> • Results from all drill holes in the historic and current FEG drill programs for which assays have been received have been reported in previous FEG announcements.
Other substantive exploration data	<ul style="list-style-type: none"> • Other exploration data, if meaningful and material, should be reported including (but not limited to): geological observations; geophysical survey results; geochemical survey results; bulk samples – size and method of treatment; metallurgical test results; bulk density, groundwater, geotechnical and rock characteristics; potential deleterious or contaminating substances. 	<ul style="list-style-type: none"> • Preliminary metallurgical test work, on surface samples and on drill core composites from the Sua prospect were completed by Avocet / PT Iriana Mutiara Idenburg (IMI) in Penjom, Malaysia in 2007. • Mining One Consultants based in Jakarta completed preliminary metallurgical test work on 3 drill core composites from the Sua prospect to evaluate gold recoveries. The work was completed in Q1 2026 on behalf of FEG at Pt. Geoservices laboratory in Bekasi, Indonesia and the results are summarised herein. The samples were tested to evaluate gold recoveries in different grade profiles according to the program detailed in Appendix 2. • The test work reported herein indicates that > 50% of the contained gold is recoverable by gravity, while overall recoveries by carbon-in-leach (CIL) or resin-in-leach (RIL) processes exceed 95 %. • Preliminary cyanide-leach, bottle-roll tests on Bermol rock material by Placer reportedly indicated gold recoveries of 80%. There has been no additional testing of Bermol samples by FEG.



Criteria	JORC Code explanation	Commentary
Further work	<ul style="list-style-type: none"> • The nature and scale of planned further work (eg tests for lateral extensions or depth extensions or large-scale step-out drilling). • Diagrams clearly highlighting the areas of possible extensions, including the main geological interpretations and future drilling areas, provided this information is not commercially sensitive. 	<ul style="list-style-type: none"> • Additional detailed metallurgical test work will be completed to determine optimal process methods.



Section 3 Estimation and Reporting of Mineral Resources
(Criteria listed in Section 1, and where relevant in Section 2, also apply to this section.)

Criteria	JORC Code explanation	Commentary
Database integrity	<ul style="list-style-type: none"> • Measures taken to ensure that data has not been corrupted by, for example, transcription or keying errors, between its initial collection and its use for Mineral Resource estimation purposes. • Data validation procedures used. 	<ul style="list-style-type: none"> • A complete review of the geological database was conducted to assess if the data was suitable to support the estimating and reporting of Gold Resources by a Competent Person according to SMGC's interpretation of the 2012 JORC Code. • Valid points of observation require the following information: <ul style="list-style-type: none"> • correct survey location data and ensure acceptable discrepancy with the surface topography. • geological logs detailing the various lithologies and geological structures present at a given location. • A downhole survey must be undertaken to check the borehole deviation. • representative ore samples must be collected and submitted to an accredited laboratory for analysis and following checked by QA/QC procedures. • A complete review of the geological database was conducted to assess if the data was suitable to support the estimating and reporting of Gold Resources by a Competent Person according to SMGC's interpretation of the 2012 JORC Code. • To allow estimation and reporting according to SMGC's interpretation of the 2012 JORC Code, a Resource must have enough valid points of observation, and these points must be suitably spaced to accurately represent the deposit being modelled. Domain continuity and its characteristics must be understood to allow confirmation of the Resource. Points of observation can be outcrops, exploration trenches, or boreholes. • Valid points of observation require the following information: correct survey location data; and ensuring that there is an acceptable discrepancy with the surface topography, and geological logs detailing the various lithologies and geological structures present at a given location, and a downhole survey must be undertaken to check for borehole deviation, and representative ore samples must be collected and submitted to an accredited laboratory for analysis, followed by verification through QA/QC procedures. • The majority of all the above criteria were met by IMI project exploration data to date. Previous QA/QC was only conducted within the laboratory during the exploration stage and subsequent disturbance of drill core during IMI transport did not allow for additional QAQC by SMGC.. • Borehole collar coordinate adjustments were made to the topographic surface for Bermol and Mafi.



<p>Site visits</p>	<ul style="list-style-type: none"> • Comment on any site visits undertaken by the Competent Person and the outcome of those visits. • If no site visits have been undertaken indicate why this is the case. 	<ul style="list-style-type: none"> • Several site visits have been carried out by both SMGC and FEG Geologist • SMGC Principal Geologist visited the site from 21 to 28 August 2024. • The visit focused on visual confirmation of mineralized zones in the field and drill core and duplicate sampling of the remaining half core of the Sua, Bermol and Mafi boreholes at the Arso Core Shed. • Artisanal mining in Mafi was also cited by the SMGC Principal Geologist.
<p>Geological interpretation</p>	<ul style="list-style-type: none"> • Confidence in (or conversely, the uncertainty of) the geological interpretation of the mineral deposit. • Nature of the data used and of any assumptions made. • The effect, if any, of alternative interpretations on Mineral Resource estimation. • The use of geology in guiding and controlling Mineral Resource estimation. • The factors affecting continuity both of grade and geology. 	<ul style="list-style-type: none"> • Geological mapping and core logging indicate that the basic style of gold mineralisation is of the orogenic gold type, also referred to as mesothermal lode gold. These deposits are typically hosted in highly deformed rocks around tectonic activity that have been intruded from the effects of regional metamorphism or the intrusion of magma. • Sua gold mineralisation has been interpreted and modelled as a stacked quartz vein system that dips moderately at around 35 degrees towards the north. The vein system seems to be associated with the thrusting event and runs parallel to the thrusts as described above. • Gold mineralisation at North Bermol has been interpreted as a structurally controlled quartz vein, hosted by altered metadiorite and metabasalt. The vein geometry has been modelled as an elongated mineralised body aligned with the majority structural NE trend and shallow NE and SW dip recognised in the data. • Bermol gold mineralisation has been interpreted and modelled as a single vein structure that has been downthrown by faulting towards the north on the western side of the river and outcrops at a higher elevation on the eastern side. This has resulted in 5 discrete vein models. • Gold mineralisation at Mafi occurs in the oxidised, silicified ultramafics in vuggy, brecciated sulphide-quartz veins, which form a shallow (10° to 40°) west-dipping tabular zone. The description of the mineralisation suggests epithermal affinities. If the mineralisation coincides with a thrust, steeper feeder zones may be present beneath the thrust, particularly if the mineralisation is restricted laterally.
<p>Dimensions</p>	<ul style="list-style-type: none"> • The extent and variability of the Mineral Resource expressed as length (along strike or otherwise), plan width, and depth below surface to the upper and lower limits of the Mineral Resource. 	<ul style="list-style-type: none"> • Model Dimensions <ul style="list-style-type: none"> • Sua: ~ 1,130 m x 1,000 m; • North Bermol: ~ 750 m x 1,700 m; • Bermol: ~ 1,240 m x 1,280 m; and • Mafi: ~ 500 m x 460 m.



<p>Estimation and modelling techniques</p>	<ul style="list-style-type: none"> • The nature and appropriateness of the estimation technique(s) applied and key assumptions, including treatment of extreme grade values, domaining, interpolation parameters and maximum distance of extrapolation from data points. If a computer assisted estimation method was chosen include a description of computer software and parameters used. • The availability of check estimates, previous estimates and/or mine production records and whether the Mineral Resource estimate takes appropriate account of such data. • The assumptions made regarding recovery of by-products. • Estimation of deleterious elements or other non-grade variables of economic significance (eg sulphur for acid mine drainage characterisation). • In the case of block model interpolation, the block size in relation to the average sample spacing and the search employed. • Any assumptions behind modelling of selective mining units. • Any assumptions about correlation between variables. • Description of how the geological interpretation was used to control the Resource estimates. • Discussion of basis for using or not using grade cutting or capping. • The process of validation, the checking process used, the comparison of model data to drill hole data, and use of reconciliation data if available. 	<ul style="list-style-type: none"> • Previously FEG supplied wireframes for Sua, Bermol, and Mafi in 2024. These wireframes had been received by SMGC when the Exploration Target Report was completed. After drilling campaign in Sua and North Bermol between 2025 to 2026, FEG then provided wireframes for Sua (updated) and North Bermol. The wireframes together with the borehole database were then loaded into Leapfrog Software for geological modelling, grade estimation and reporting. • Checks and validation of the borehole databases against the wireframes have been undertaken to ensure that the wireframes intersected the valuable gold grade. These checks included: <ul style="list-style-type: none"> • A visual cross-sectional check of borehole sample Au assays against the ore domain. • Conduct a visual inspection of the wireframe extrapolations. • Reporting of the gold grade within the ore domain. • SMGC edited the North Bermol wireframe based on geological interpretation of existing drilling data. • The geological model is limited by a maximum 100m extrapolation from data • For Sua and North Bermol, the parent block size selected 10m x 10m x 2m (minimum block size 5m x 5m x 1m), and for Bermol and Mafi selected 20m x 20m x 2m (minimum block size 2.5m x 2.5m x 2m). • The selected block size is considered appropriate for this type of mineralization. The assumption of the block size was designed to match the drill spacing. • To estimate grades for Sua, North Bermol, and Mafi, SMGC opted for the Inverse Distance Weighting (IDW) method. • A single search pass was applied to IDW estimation for the Sua, North Bermol and Mafi Ore domains. • Due to data limitations, the grade estimation for Bermol was conducted using a weighted average approach. The weighted average of interval samples within the Bermol wireframe was applied for this purpose. • There is no grade capping applied in the FEG geological modelling • Validation to the model was carried out using three main techniques: <ul style="list-style-type: none"> • Histograms of sample assays and model grades. • Swath Plots of sample assays and model grades. • Cross sections depicting boreholes in relation to the block model.
<p>Moisture</p>	<ul style="list-style-type: none"> • Whether the tonnages are estimated on a dry basis or with natural moisture, and the method of determination of the moisture content. 	<ul style="list-style-type: none"> • The tonnages are estimated based on a specific gravity of 2.8 t/m³ which were determined through bulk density measurements in the Sua Prospect with natural moisture.



<p>Cut-off parameters</p>	<ul style="list-style-type: none"> The basis of the adopted cut-off grade(s) or quality parameters applied. 	<ul style="list-style-type: none"> The cut-off grade is the minimum grade required for a mineral or metal to be economically mined. The cut-off grade is used to determine what material is classified as ore and what is classified as waste. Material found to be above the cut-off grade is considered to be ore, while material below the cut-off grade is considered to be waste. The cut-off grade can be determined through a variety of methods. To satisfy the requirement that there are reasonable prospects for eventual economic extraction, SMGC in estimating the IMI Resource considers applying a gold cut-off grade. A break-even cutoff grade of 0.1 g/t Au has been applied to this Resource Estimation. This cut-off grade is based on the formula below: Cut-off Grade = Cost / Recovery / Gold Price Cost: SMGC determined the cost based on historical data from an open-pit gold mining operation in Indonesia with a deposit similar to IMI. To calculate the breakeven cut-off grade, only processing and G&A costs were included. A cost of USD 8.06 per tonne was used to determine this cut-off grade. Recovery: the metallurgical test work that has been undertaken to determine gold recovery. The test work demonstrated that 50 to 60% of the gold was recoverable by gravity, while overall recoveries by Cyanide-in-Leach (CIL) or Resin-in-Leach (RIL) processes exceeded 90%. In determining the gold recovery for this break-even cut-off grade, SMGC applied a 90% gold recovery. Gold Price: the gold price was determined based on historical prices over the past 10 years. In 2015 the gold price was approximately USD 1,200/oz. Since then, the gold price has increased to over USD 2,000/oz. There was a spike of up to USD 2,700/oz in the fourth quarter of 2024. SMGC has used a gold price of USD 2,000/oz as it is considered a more reliable long-term price to satisfy the “Reasonable Prospects for Eventual Economic Extraction.” To satisfy the requirement of RPEEE, a break-even cut-off grade of 0.1g/t has been applied to the IMI Resource Estimation
<p>Mining factors or assumptions</p>	<ul style="list-style-type: none"> Assumptions made regarding possible mining methods, minimum mining dimensions and internal (or, if applicable, external) mining dilution. It is always necessary as part of the process of determining reasonable prospects for eventual economic extraction to consider potential mining methods, but the assumptions made regarding mining methods and parameters when estimating Mineral Resources may not always be rigorous. Where this is the case, this should be reported with an explanation of the basis of the mining assumptions made. 	<ul style="list-style-type: none"> It is assumed the Resource would be amenable to being mined as an open pit excavation by truck and shovel methods. Portions of the deposits that did not have reasonable prospects for eventual economic extraction were not included in the Mineral Resource. Lerch Grossman optimised pit shells for Sua, North Bermol, Bermol and Mafi were created and used as a bottom limit in the Resource Estimation by SMGC.



<p>Metallurgical factors or assumptions</p>	<ul style="list-style-type: none"> The basis for assumptions or predictions regarding metallurgical amenability. It is always necessary as part of the process of determining reasonable prospects for eventual economic extraction to consider potential metallurgical methods, but the assumptions regarding metallurgical treatment processes and parameters made when reporting Mineral Resources may not always be rigorous. Where this is the case, this should be reported with an explanation of the basis of the metallurgical assumptions made. 	<ul style="list-style-type: none"> IMI had conducted preliminary metallurgical test work on Sua surface samples and drill core composites at its Penjom Laboratory in Malaysia. This work demonstrated that 50 to 60% of the gold was recoverable by gravity, while overall recoveries by Cyanide-in-Leach (CIL) or Resin-in-Leach (RIL) processes exceeded 90%. This indicates that the metallurgy of the mineralisation is amenable to standard extraction techniques. Considering this test work, in determining the gold recovery for these Resources, SMGC applied a 90% gold recovery.
<p>Environmental factors or assumptions</p>	<ul style="list-style-type: none"> Assumptions made regarding possible waste and process residue disposal options. It is always necessary as part of the process of determining reasonable prospects for eventual economic extraction to consider the potential environmental impacts of the mining and processing operation. While at this stage the determination of potential environmental impacts, particularly for a greenfields project, may not always be well advanced, the status of early consideration of these potential environmental impacts should be reported. Where these aspects have not been considered this should be reported with an explanation of the environmental assumptions made. 	<ul style="list-style-type: none"> All the 14 IMI prospect areas are situated in a production forest (HP) or limited production forest (HPT) zone. Both Sua and Mafi are situated in a production forest (HP) area, but North Bermol and Bermol is situated in a limited production forest area. All exploration and mining activity conducted within the HP area must be covered by a permit to borrow and use forest land (Izin Pinjam Pakai Kawasan Hutan – IPPKH). There is no information on whether the IPPKH Permit has been applied for or is already in IMI's possession. It is SMGC's opinion that currently, no environmental, forestry, or permitting issues that would influence the estimation of this Mineral Resource have been identified.
<p>Bulk density</p>	<ul style="list-style-type: none"> Whether assumed or determined. If assumed, the basis for the assumptions. If determined, the method used, whether wet or dry, the frequency of the measurements, the nature, size and representativeness of the samples. The bulk density for bulk material must have been measured by methods that adequately account for void spaces (vugs, porosity, etc), moisture and differences between rock and alteration zones within the deposit. Discuss assumptions for bulk density estimates used in the evaluation process of the different materials. 	<ul style="list-style-type: none"> The IMI internal Resource Estimation uses a Specific Gravity (SG) of 2.8 t/m³. This has been determined through bulk density measurements in the Sua Prospect and is compatible with the host rock and mineralisation style. Due to the absence of a true SG for North Bermol, Bermol and Mafi, SMGC used an SG of 2.8 to estimate the IMI Resources for Sua, North Bermol, Bermol and Mafi, which is considered to be conservative when considering the style of mineralisation seen at all four prospects.



<p>Classification</p>	<ul style="list-style-type: none"> • The basis for the classification of the Mineral Resources into varying confidence categories. • Whether appropriate account has been taken of all relevant factors (ie relative confidence in tonnage/grade estimations, reliability of input data, confidence in continuity of geology and metal values, quality, quantity and distribution of the data). • Whether the result appropriately reflects the Competent Person’s view of the deposit. 	<ul style="list-style-type: none"> • Exploration to date has been used to build three geological models for the Sua, North Bermol, Bermol and Mafi Prospects. In interpreting the 2012 JORC, SMGC is of the opinion that the deposits in the four prospective areas can only be categorized as Inferred Resources, primarily because: <ul style="list-style-type: none"> • During the early exploration phase, QA/QC procedures were limited to laboratory-based controls. This was supplemented by duplicate sampling undertaken by SMGC during a site visit in August 2024, which identified some unexpected results. Subsequently, a more comprehensive QA/QC protocol was implemented during the June 2025 to February 2026 drilling program across Sua, North Bermol, and Bermol. This included the routine insertion of Certified Reference Materials (CRMs), field duplicates, and blank samples to ensure ongoing monitoring of assay accuracy, precision, and contamination. However, the proportion of QA/QC samples remains relatively limited compared to the total assay dataset. Duplicate sampling of the remaining half core of the Sua, Bermol and Mafi Prospects by SMGC exhibited no relationship between original and duplicate samples. • The bulk density measurement to determine the SG used for Resource Estimation was only undertaken in Sua, a true SG for North Bermol, Bermol and Mafi were absent. • The collar coordinates of the Sua, North Bermol, Bermol and Mafi boreholes have been adjusted to the current revised topography due to discrepancies.
<p>Audits or reviews</p>	<ul style="list-style-type: none"> • The results of any audits or reviews of Mineral Resource estimates. 	<ul style="list-style-type: none"> • The JORC Mineral Resource report was checked as part of SMGC’s peer review process by Keith Whitchurch • Mr Whitchurch is a Fellow of the Australasian Institute of Mining and Metallurgy. He has sufficient experience relevant to the style of mineralisation and the type of deposit located in this concession to qualify as a Competent Person
<p>Discussion of relative accuracy/ confidence</p>	<ul style="list-style-type: none"> • Where appropriate a statement of the relative accuracy and confidence level in the Mineral Resource estimate using an approach or procedure deemed appropriate by the Competent Person. For example, the application of statistical or geostatistical procedures to quantify the relative accuracy of the Resource within stated confidence limits, or, if such an approach is not deemed appropriate, a qualitative discussion of the factors that could affect the relative accuracy and confidence of the estimate. The statement should specify whether it relates to global or local estimates, and, if local, state the relevant tonnages, which should be relevant to technical and economic evaluation. Documentation should include assumptions made and the procedures used. • These statements of relative accuracy and confidence of the estimate should • be compared with production data, where available. 	<ul style="list-style-type: none"> • Exploration data to date has been used to build four geological models for the Sua, North Bermol, Bermol and Mafi Prospects. In interpreting the 2012 JORC, SMGC is of the opinion that the deposits in the four prospective areas can only be categorized as Inferred Resources primarily because: <ul style="list-style-type: none"> • During the early exploration phase, QA/QC procedures were limited to laboratory-based controls. This was supplemented by duplicate sampling undertaken by SMGC during a site visit in August 2024, which identified some unexpected results. Subsequently, a more comprehensive QA/QC protocol was implemented during the June 2025 to February 2026 drilling program across Sua, North Bermol, and Bermol. This included the routine insertion of Certified Reference Materials (CRMs), field duplicates, and blank samples to ensure ongoing monitoring of assay accuracy, precision, and contamination. However, the proportion of QA/QC samples remains relatively limited compared to the total assay dataset. • The bulk density measurement to determine the SG used for Resource Estimation was only undertaken at Sua, a true SG for North Bermol, Bermol and



		<p>Mafi were absent.</p> <ul style="list-style-type: none"> • Borehole collar elevation adjustments were made to the topographic surface for Sua, North Bermol, Bermol, and Mafi. • SMGC estimated the ore tonnage for the four prospect areas and categorized all of them as Inferred Resources. This estimation was based on a cut-off grade of 0.1 g/t Au and an applied bottom limit to satisfy the RPEEE criteria. • Due to the data limitations, the FEG Mineral Resource can only be categorised as an Inferred Resource. • It is likely that with further infill, the Mineral Resource estimated will increase.
--	--	---