



**TECHGEN METALS**  
LIMITED

# OUTSTANDING COPPER & GOLD TARGETS

COMPANY PRESENTATION

May 2026 – ASX: TG1

Photo: Mt Baggola project - WA

ersonal use only



# Corporate Snapshot

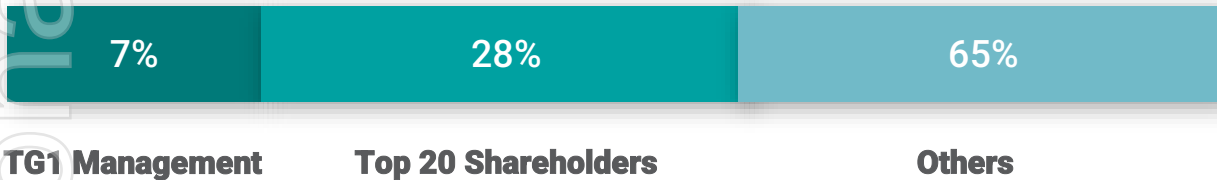
**375m**  
Shares on Issue

**\$11m**  
Market Cap  
(as of 1 May 2026)

**\$1.74m**  
Cash at bank  
(March 31 2026 - unaudited)

**28m unquoted**  
**155m quoted**  
Options on Issue  
**12m**  
Performance Rights on Issue

## Shareholder Distribution



## Major Projects

|                             |                                      |
|-----------------------------|--------------------------------------|
| <b>BLUE &amp; RED DEVIL</b> | <b>COPPER – GOLD – SILVER</b>        |
| <b>MT BOGGOLA</b>           | <b>COPPER – GOLD – LEAD - SILVER</b> |
| <b>DALGARANGA</b>           | <b>GOLD</b>                          |
| <b>BLUE BORE</b>            | <b>COPPER</b>                        |
| <b>JOHN BULL</b>            | <b>GOLD</b>                          |



# Short Term Price Catalysts

**01** Blue & Red Devil - Copper, Gold, Silver –POW, Inaugural Drilling (Co funding awarded).

**02** Mt Boggola - Copper, Gold, Lead & Silver – Assays & new drilling of 20m @ 1.14% Cu

**03** Dalgaranga - Gold & VMS – Project granting, Heritage, POW & Drilling.

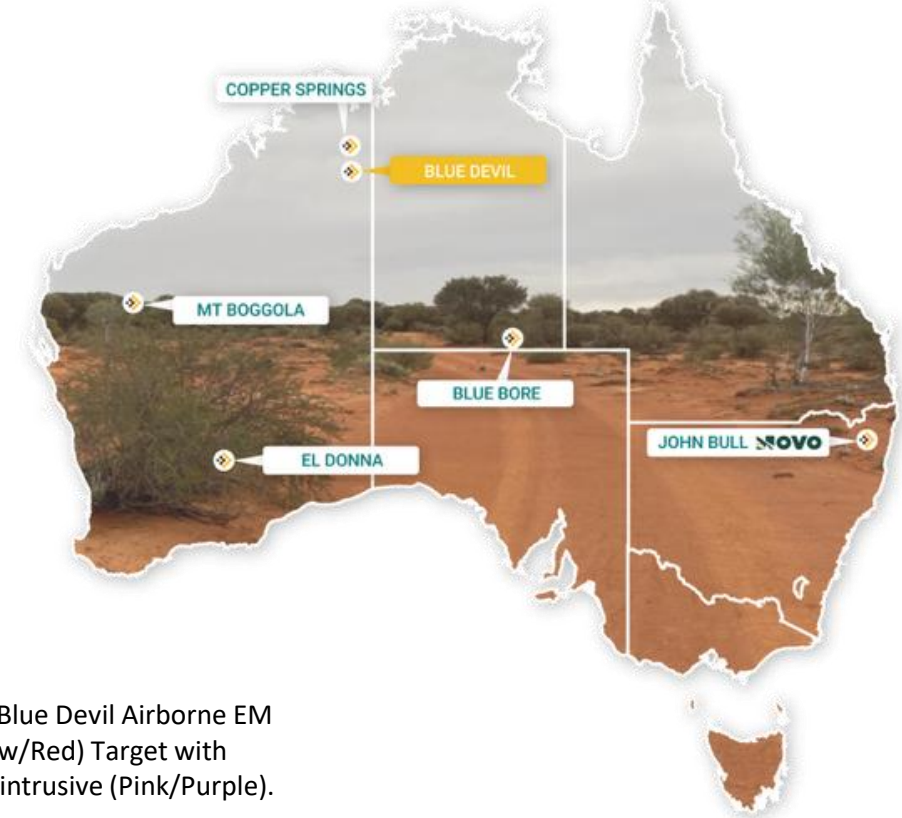
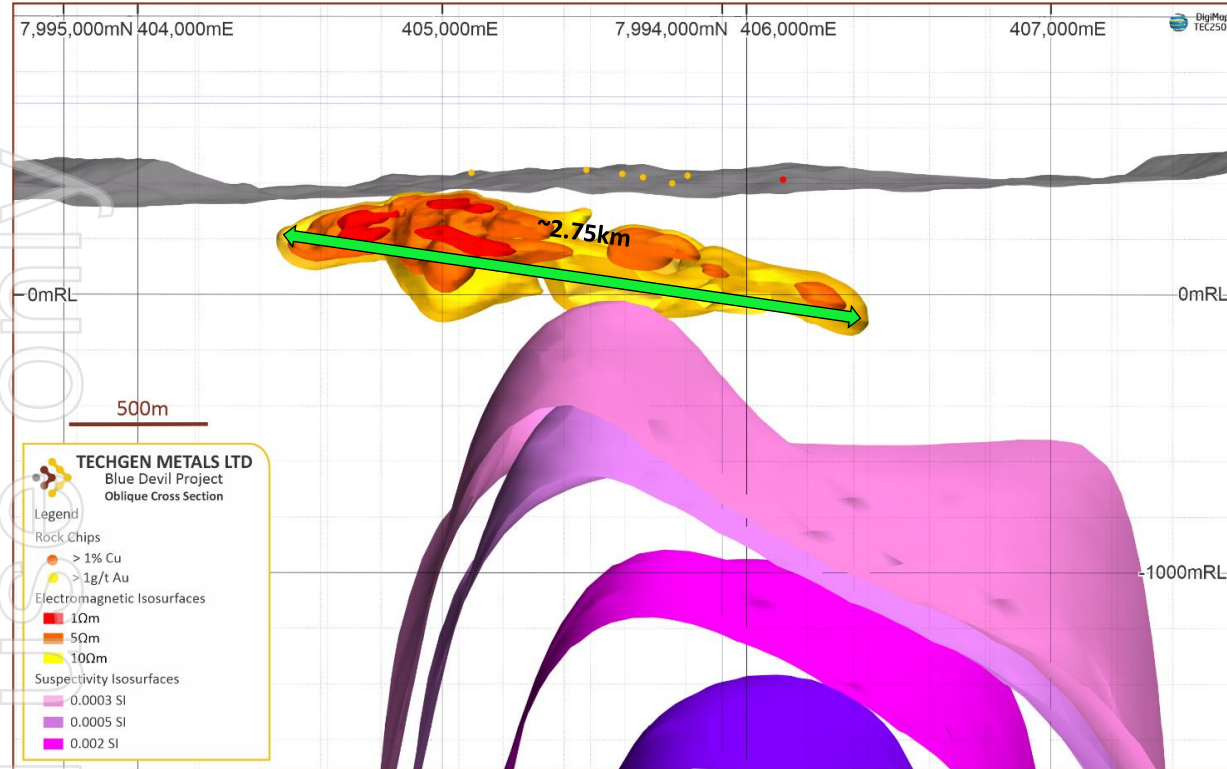
**04** John Bull – Gold - Phase 3 drilling at John Bull Gold Project, NSW.

**05** El Donna – Gold - RC drilling to follow-up previous encouraging intercepts.





## Large Scale Cu/Au/Ag Opportunity



**Figure 1:** Blue Devil Airborne EM (Yellow/Red) Target with magnetic intrusive (Pink/Purple).

### Massive EM Conductors

- Airborne EM 12.5Hz (TargetEM) delivered an outstanding and large bedrock conductor at approximately ~200m depth & 2.75km long, the anomaly is broken into three zones (BDW, BDE & BDN).

### Surface Mineralisation

- Rock chip peak values of 50.5% Cu, 18.5g/t Au & 53g/t Ag.
- Areas of Cu-Au stream, soil & rock chip anomalism remain open along strike and previously untested by geophysics or drilling.
- Expert geochemistry modelling element associations suggest potential for intrusion-related, sediment hosted and or VMS style Cu-Au mineralisation across the project.

### Location

- In the world-class mineral province of the Halls Creek Orogen. The project is located 40km northeast of Halls Creek covering an area of 187km<sup>2</sup>.
- 60km from the Great Northern Highway and 550km From the Port of Derby.



## High Grade Cu/Au/Ag Opportunity

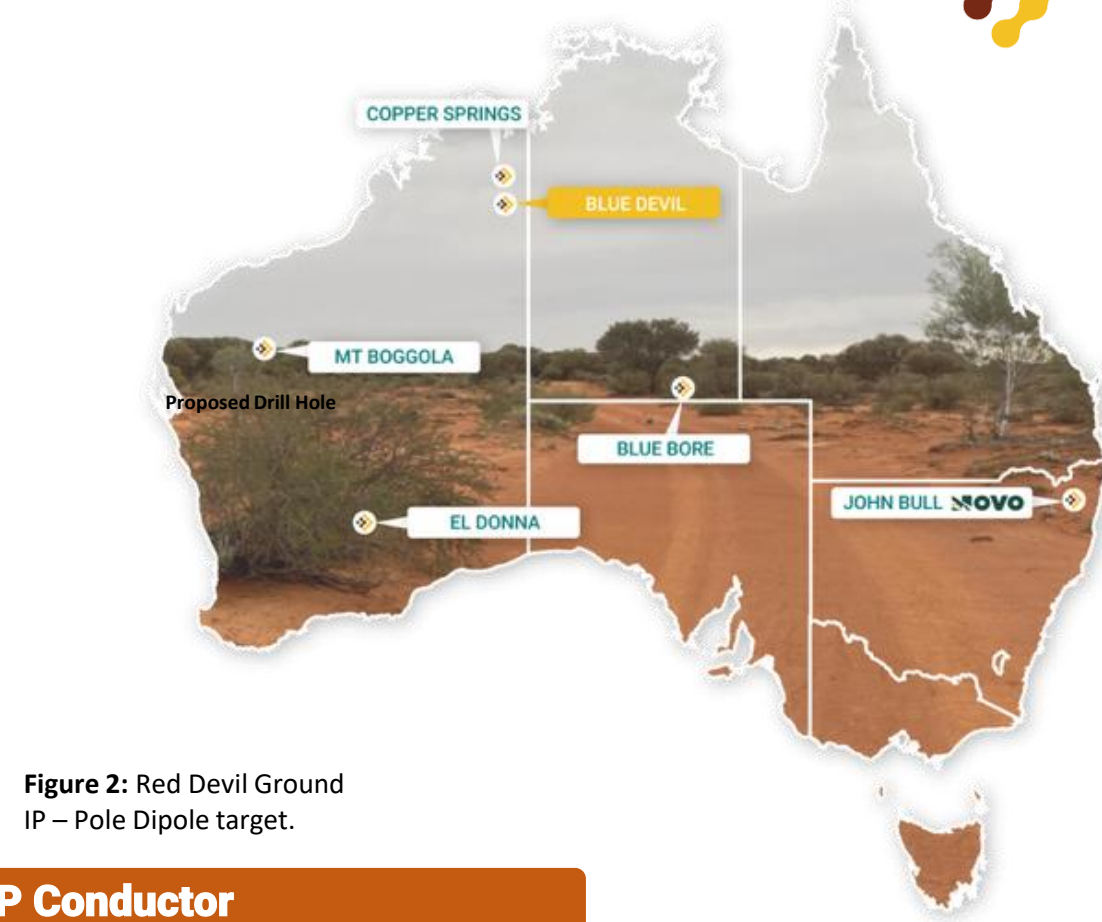
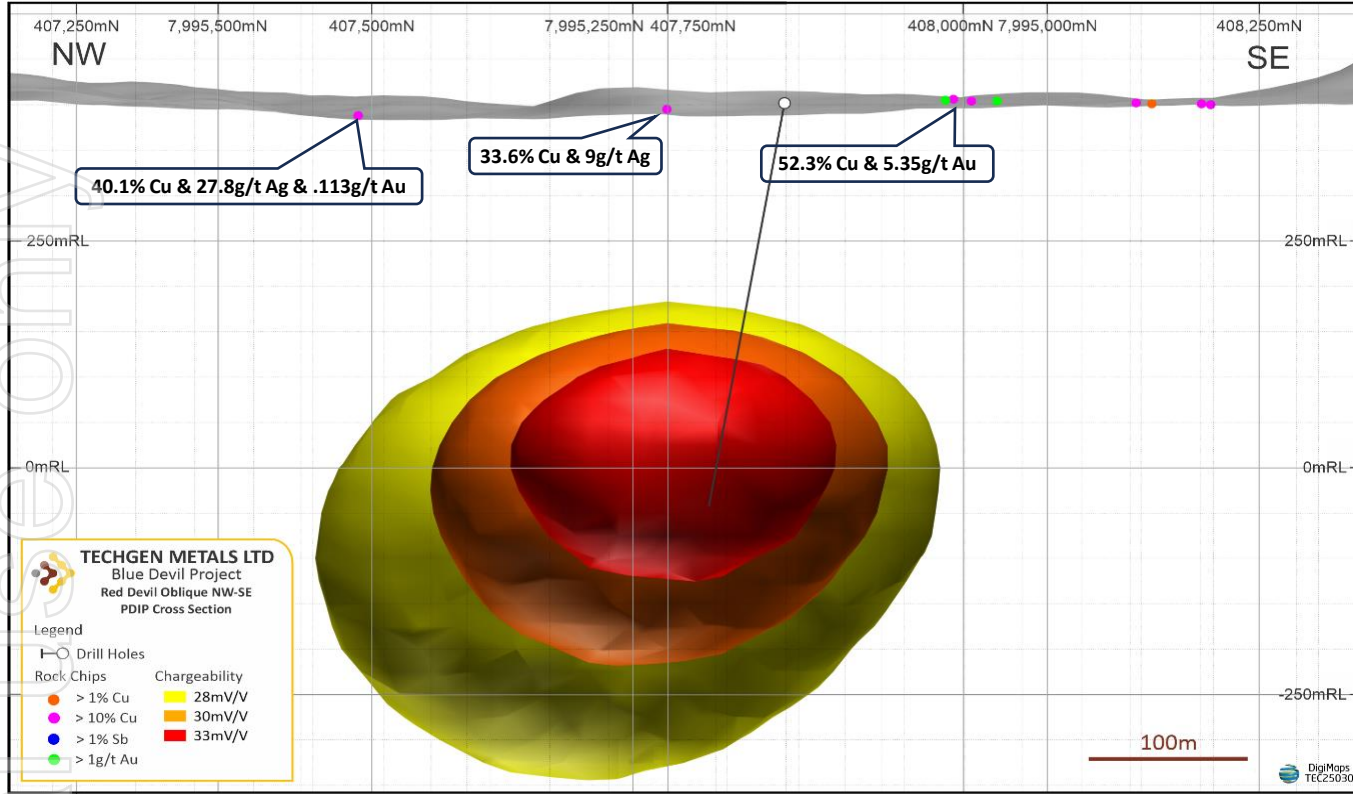


Figure 2: Red Devil Ground IP – Pole Dipole target.

### Surface Mineralisation

- 15 rock chips include 7 samples of >10% Cu (peak 52.3% Cu) and 2 samples >1g/t Au (peak 5.35g/t Au). A further 7 rock chip samples were taken during the IP survey, and these assay results are pending.
- Rock chip sample KIA003, taken by Spartan Exploration Pty Ltd in 2015, sits directly above the surface projection of the Red Devil IP target and returned 33.6% Cu & 9g/t Ag.

### Large IP Conductor

- A very strong IP chargeability target has been identified by an IP geophysical survey. Red Devil has a very strong chargeability feature with a core zone ~30 - 35mV/V within a broader more extensive zone of ~20mV/V. The core ~30 - 35mV/V IP zone is ~175-225m below surface and is ~300m in vertical thickness. The Red Devil target occurs across 3 IP survey lines.



## Location

- The Mt Boggola Project is located ~60km to the south of Paraburdoo within the Ashburton Region of WA. The project is located in the unconformity zone of the Proterozoic-aged Ashburton and Edmund Basins. The Company is targeting shear zone hosted & intrusive related copper-gold-antimony mineralisation at the project.

## IP Geophysics & Minerisation

- Targets MB4:** High-grade copper of 20m @ 1.14% Cu intersected from 22m in the RC pre-collar of hole MBDD003 with associated gold and lead anomalism - Stage two drilling is currently being planned to follow this broad high-grade copper zone up once all assays have been received.
- Zones of magnetite – hematite ± pyrite alteration commence from 417 metres downhole and continue intermittently through until the end of hole at 501.4 metres.
- Magnetite alteration deeper in hole MBDD003 is interpreted to explain the magnetic feature present at the MB4 target.

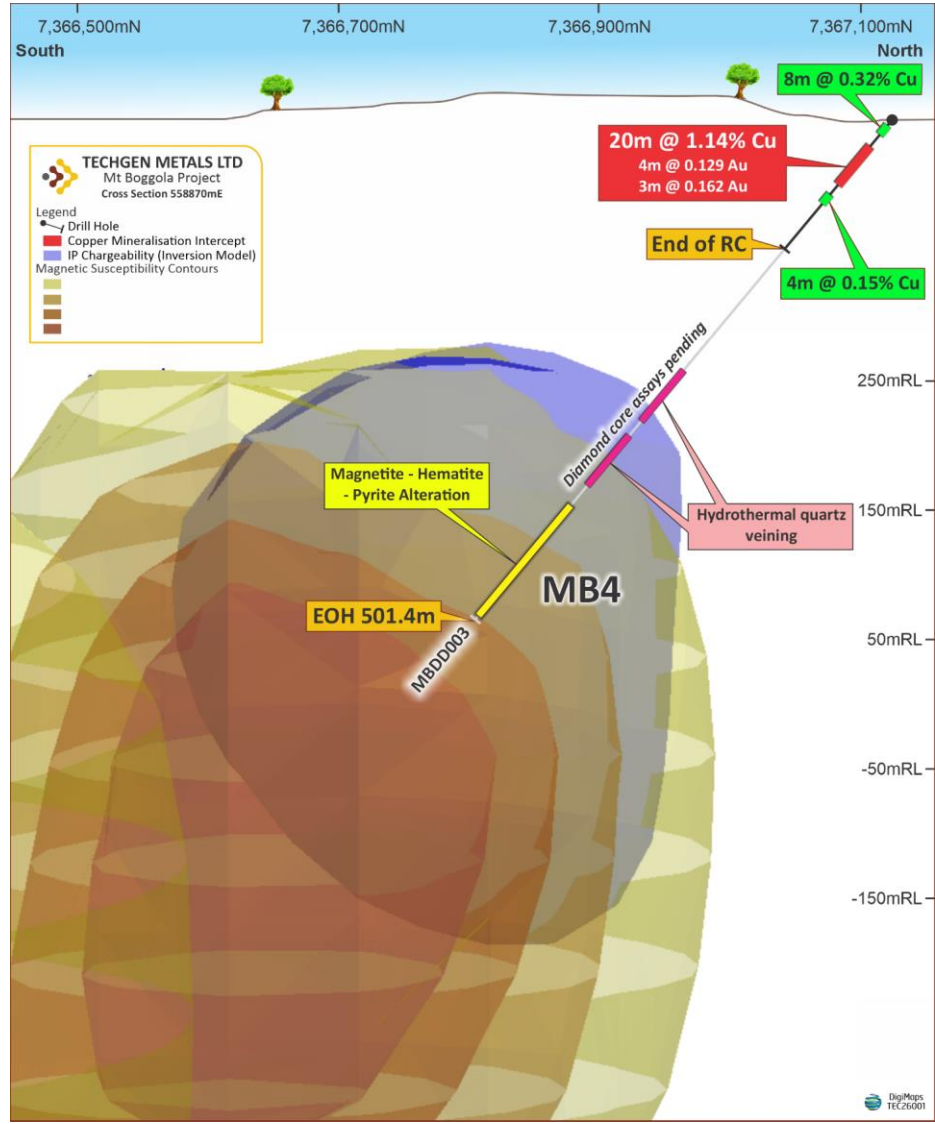


Figure 3: Section view of drill hole MBDD003 testing target MB4, coincident IP chargeability high & magnetic feature.



Photo 1: Quartz veining and hydrothermal alteration with blebby galena (lead) and pyrite (MBDD003; 484 - 490m). Assays pending.

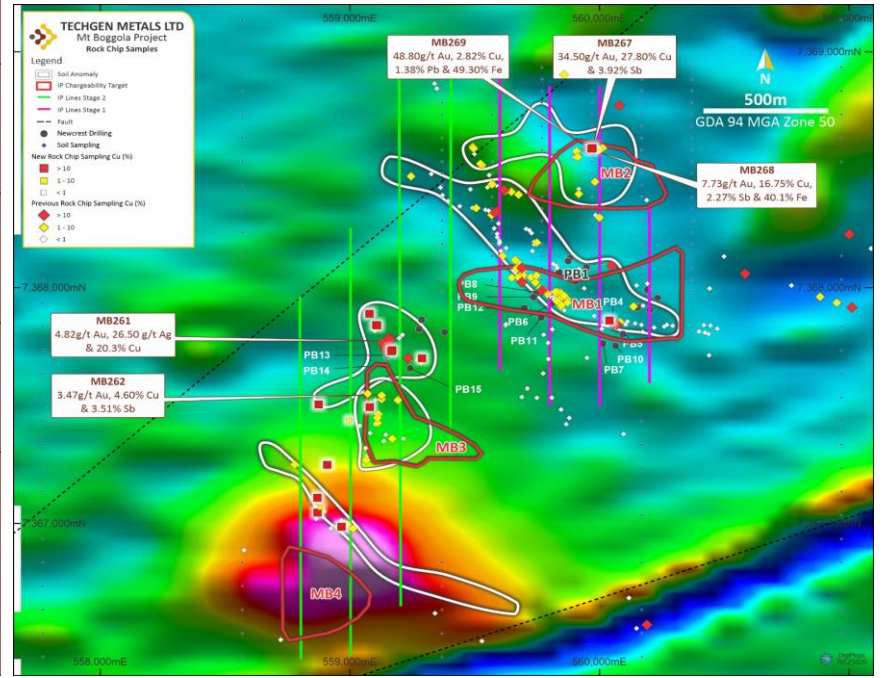


Figure 4: MB1-MB4 IP Targets, soils, rock chips & planned drilling, Mt Boggola Project.





## Dalgaranga VHMS & Gold

- Dalgaranga – VHMS Target; The VHMS & Gold high priority soil target consists of coincident base metal and gold soil anomalies over a prominent airborne magnetic and gravity feature that may represent a Volcanic-Hosted Massive Sulphide (VHMS) style target. Ground EM is currently being planned.
- No drilling has ever previously been conducted at the Armstrong Prospect or at the priority gold and VHMS soil target areas representing a rare untested exploration opportunity in a highly sought after blue-chip region.
- A ground Moving Loop Electro Magnetic survey has been planned and due to commence over the coming weeks.

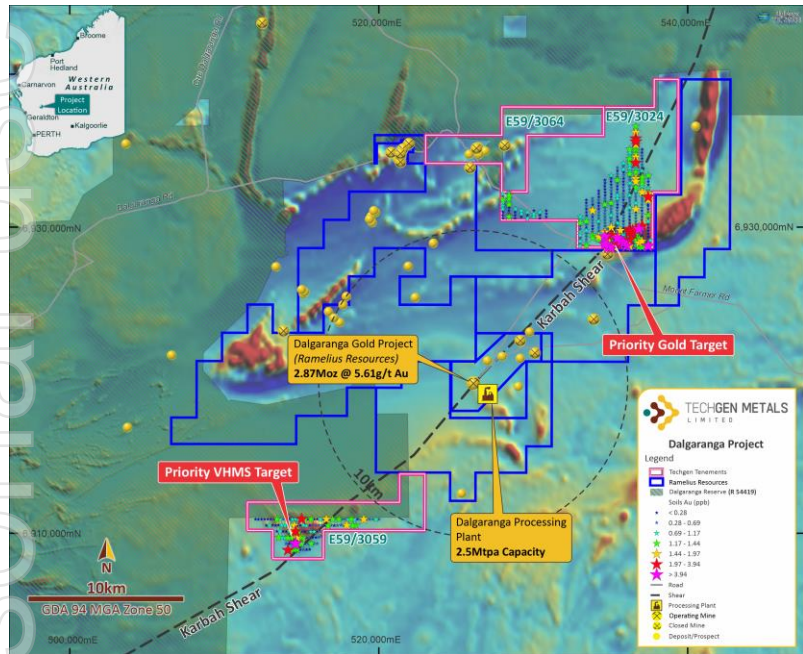


Figure 6: Location over magnetics of E59/3024, E59/3025 and E59/3026 totalling 231 km<sup>2</sup>.

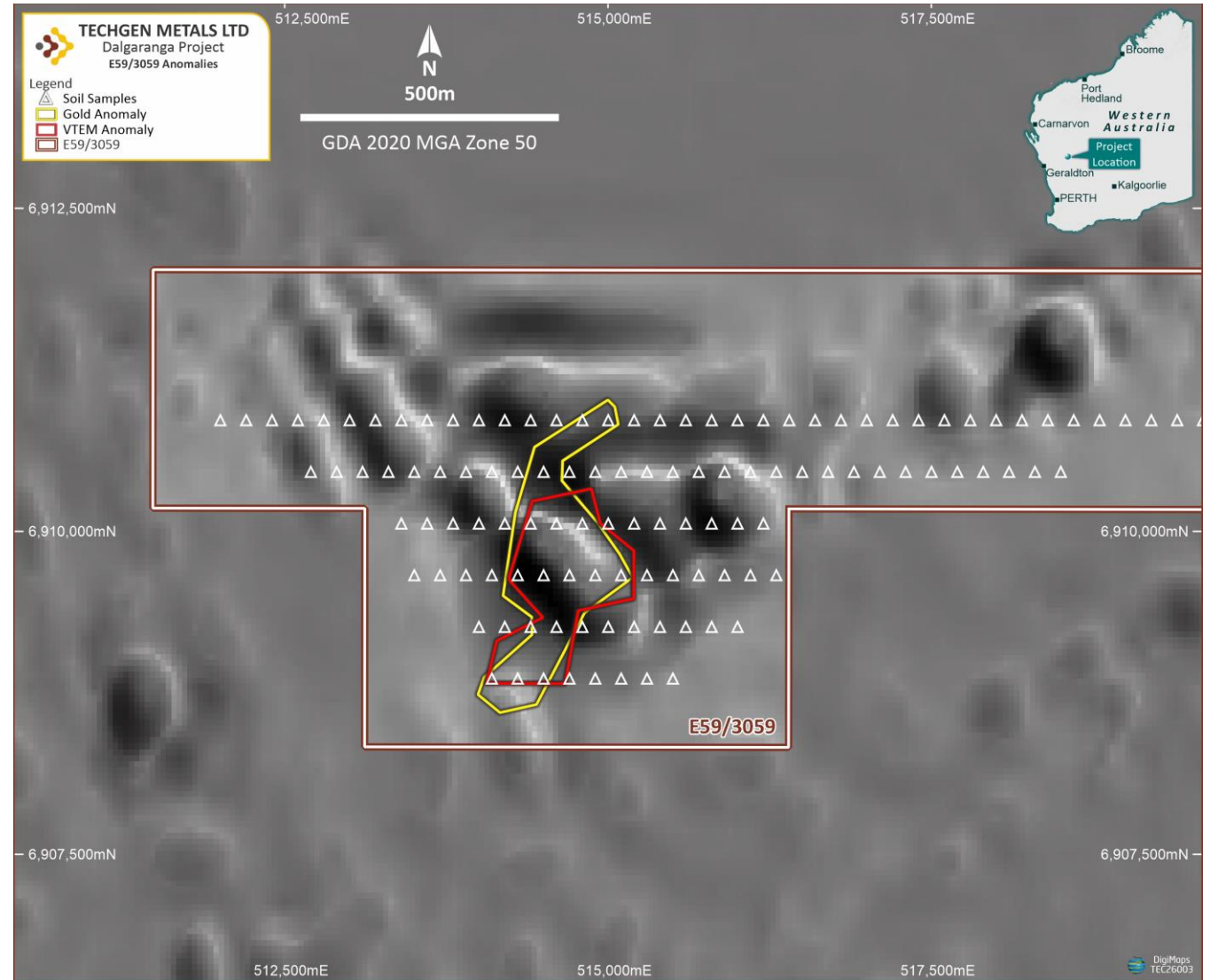
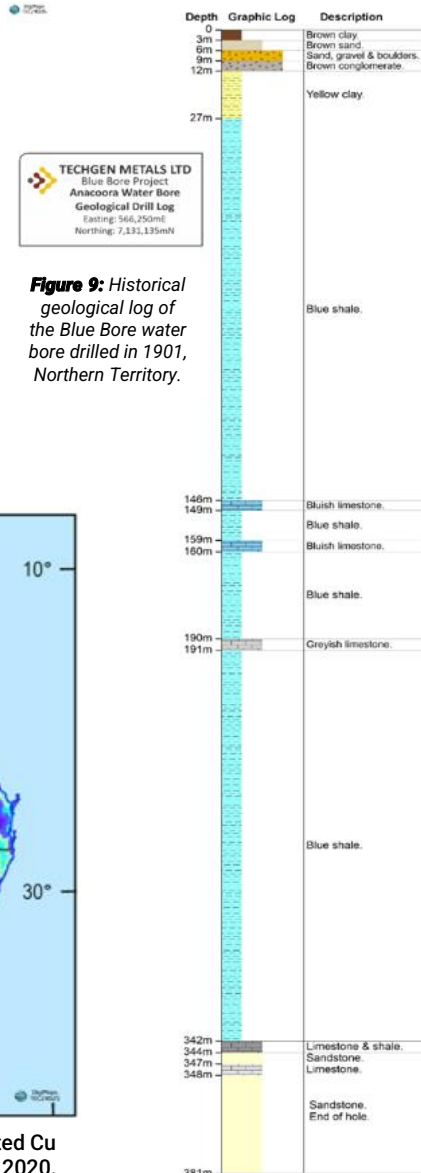


Figure 7: VHMS and Gold geochemistry modelling over 1VD Magnetis.

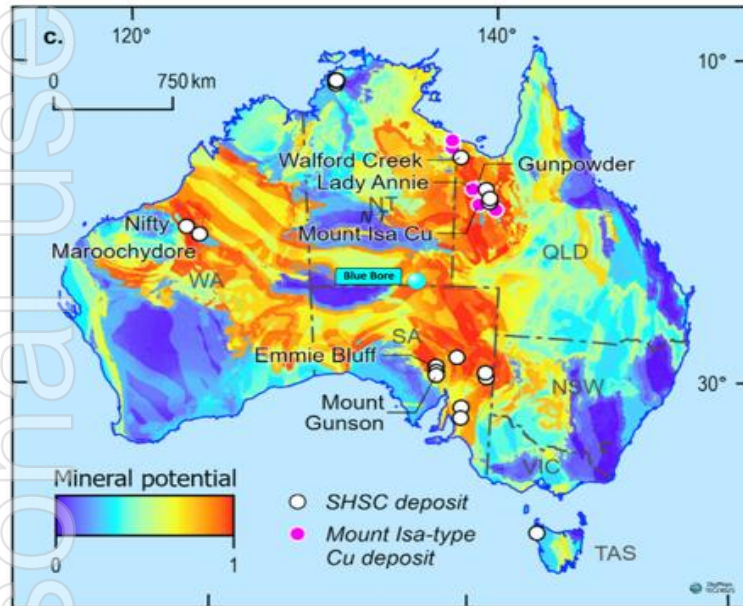


## Blue Bore – Copper NT

- Blue Bore – Copper NT Prospective for Sediment-Hosted Copper: Geoscience Australia has identified the Amadeus and Warburton basins as prospective for sediment-hosted copper mineralization. A government water bore drilled within the southern project area in January 1900. A 315m thick interval of blue rocks (blue shale & blue limestone) was logged in the hole from 27 metres downhole through to 342 metres downhole with the hole ending at a 381 metre depth. The source of the blue colour referred to in the water bore logs is currently unknown. A single water sample taken at the water bore in August 2000 returned a copper analysis of 653 µg/l (equivalent to 653 ppm Cu) which is considered highly anomalous for a water sample.



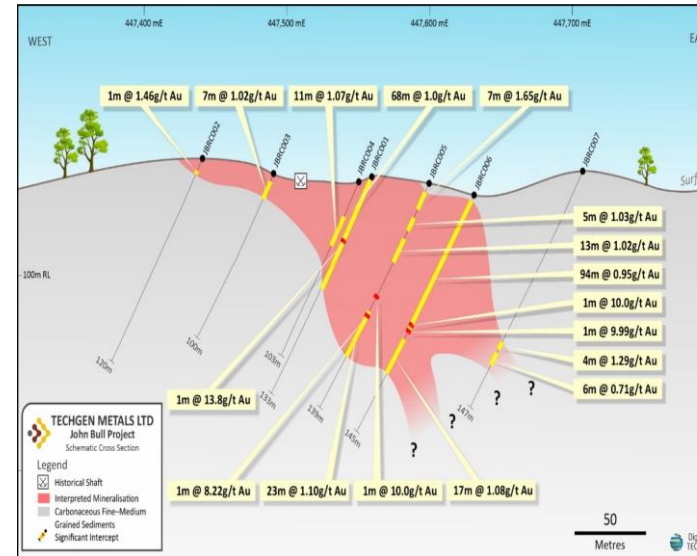
**Figure 9:** Historical geological log of the Blue Bore water bore drilled in 1901, Northern Territory.



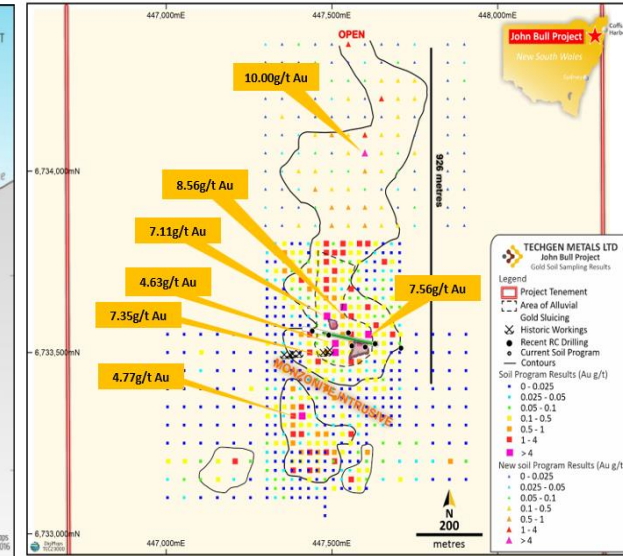
**Figure 8:** Location of the Blue Bore Project shown on sediment-hosted Cu mineral potential model of Australia (Model 2). From Cloutier et al., 2020.

## John Bull – Gold NSW

- John Bull – Gold NSW  
The John Bull Gold Project is located east of Glen Innes in northern New South Wales within the New England Orogen. The project covers 32km<sup>2</sup>. First hole, JBRC001, intersected 68m @ 1.0g/t Au including 23m @ 2.02g/t Au with a peak grade of 13.8g/t Au (from surface). JBRC007, 94m @ 0.95 g/t Au from 4m and included 66m @ 1.14 g/t Au from 32m. All 7 drill holes returned assays of > 1 g/t Au.
- Northern zone gold soil anomaly is now +900m x 275m & Southern zone is 250m x 150m with the northern anomaly still open.
- Outstanding peak soil sample result of 10 g/t Au remains untested.
- Stage 3 RC currently being planned.



**Figure 10:** Gold cross section of mineralisation.



**Figure 11:** Gold in soils mapping geochemistry



# Exploration Investment Highlights



## MT BOGGOLA

- High-grade copper of 20m @ 1.14% Cu intersected from 22m in the RC pre-collar of hole MBDD003 with associated gold and lead anomalism - Stage two drilling is currently being planned to follow this broad high-grade copper zone up once all assays have been received.
- Assays from all three diamond holes pending.
- Stage 2 RC to follow up high grade copper intercepts at MB4 (20m @ 1.14% Cu & the Saddlers Prospect (9m at 1.8% from 47m) historically drilled by Newcrest Limited.



## BLUE & RED DEVIL

- Heritage Protection Agreement and the completion of a Heritage survey have been completed & a POW Lodged.
- Three large EM conductors at Blue Devil identified with an associated magnetic intrusion with major control faults and one IP target at Red Devil containing massive boxwork copper gossans along parallel faults.
- High grade mineralisation occurrences = **52.3% Cu, 18.5g/t Au & 53g/t Ag**
- Previous exploration largely for lead/zinc (MVT type targets)
- Large landholding favourable geology targeting VMS and Intrusive type systems.



## DALGARANGA GOLD

- Scale opportunity directly adjoining Ramelius Resources' Dalgaranga Gold Project and Rumble Resources' Western Queen Gold Project.
- The licences cover a combined 231km<sup>2</sup> and are located just 8km from Ramelius Resources' Dalgaranga processing plant. Ramelius Resources' Dalgaranga Gold Project (2.97Moz @ 5.61g/t Au) on the northeast and southwest margins, positioning TechGen as the second-largest landholder in the Dalgaranga Greenstone Belt behind Ramelius.
- Recent rock chips at the historical WMC Armstrong pit up to 39.3g/t Au.
- New geochemistry reveals a strong gold and VHMS targets.



# Indicative Activity Timeline

| Project   | Q2 2026   |   |   | Q3 2026   |           |                             | Q4 2026                         |                 |             |
|---|---|---|---|---|-----------|-----------------------------|---------------------------------|-----------------|-------------|
|   | Apr   | May   | Jun   | Jul   | Aug       | Sep                         | Oct                             | Nov             | Dec         |
| <b>Blue Devil<br/>Cu/Au/Ag<br/>(Kimberley WA)</b>           | ✓ Licence granted and PoW lodged                      | PoW approval  | Site earth works                                    | Two diamond holes (Blue & Red Devils)<br>Blue Devil – co funded |           | Assay results and modelling |                                 |                 |             |
| <b>Mt Boggola<br/>Cu/Au/Sb/Fe<br/>(Ashburton WA)</b>        | ✓ RC assays received – 20m @1.14% Cu                  | Diamond assays  | Stage 2 RC drilling                                 | Airborne structural survey                                      |           | Assays                      | Pending assays - Stage drilling |                 |             |
| <b>Dalgaranga<br/>Au &amp; VHMS<br/>WA<br/>(Goldfields)</b> | ✓ Geochemistry commencement. & Assays from Rock Chips | ✓ Stage 2 Site visit – Rock Chip sampling mapping Au and VHMS | Geochemistry commencement. & Assays from Rock Chips |   | Modelling |                             | Granting & POW                  | Heritage survey | AC drilling |



# Board & Management



**ASHLEY HOOD**  
**MANAGING DIRECTOR**

- Exploration and corporate experience of more than 20 years in the mining and exploration industry with junior and major mining companies, listing several ASX exploration companies.
- Specialises in project and people management, native title negotiations, project due diligence, acquisitions and has a portfolio of family held mineral and precious metals projects.
- Board Senior Executive ASX experience, Currently Non-Executive Director Westar Resources (ASX: WSR).



**MAJA MCGUIRE**  
**NON-EXECUTIVE CHAIR**

- Experienced corporate executive and company director, bringing 15 years' experience at board and senior management level. Holds LLB and BComm qualifications from the University of Western Australia.
- Experience includes working with listed companies as a non-executive chair/director, general counsel (ASX:AVR, ASX:AJX) and in top-tier legal private practice (Clayton Utz).
- Currently Non-Executive Director of Kuniko Ltd (ASX:KNI), Indiana Resources Ltd (ASX:IDA), & LTR Pharma Ltd (ASX:LTP).



**ANDREW JONES**  
**EXECUTIVE DIRECTOR**

- More than 20 years' experience as a geologist, having worked throughout Australia, Africa and South America.
- Holds a B.App.Sci degree from RMIT University and Honors and MSc degrees from the University of Tasmania.
- Specialises in gold, copper, nickel and cobalt. Member of both the Australian Institute of Geoscientists (AIG) and the Australasian Institute of Mining and Metallurgy (AusIMM).



**AIDA TABAKOVIC**  
**COMPANY SECRETARY**

- Appointed as the Company Secretary of the Company on 1 December 2022.
- Holds a Double Major Degree in Accounting and Finance and a Postgraduate Degree in Business Law.
- Over 15 years' experience in corporate accounting and reporting and financial management, as well as having number of years' experience across secretarial and corporate compliance reporting of both ASX listed and unlisted companies.
- Involved in listing a number of junior exploration companies on the ASX and is currently Company Secretary for numerous ASX listed companies.



**CARL SWENSSON**  
**GEOLOGIST**

- Fellow of the AIIMM, a member of Society of Economic Geologists and a Qualified Person under Canadian Instrument NI43-101.
- Over 40 years of experience in mineral exploration and resource assessment.
- In-field experience in most commodities and deposit styles for gold, base metals, tin, tungsten, lithium, uranium, diamonds, coal and graphite across varied geological environments from Archean to Pliocene.
- Experience with both multinational and junior companies including as Chief Exploration Geologist for Normandy Mining Pty Ltd.
- Instrumental in starting several junior exploration companies in Australia and Canada and served on the Boards of a number of companies with extensive Australian and international experience having worked in Brazil, Chile, Peru, Canada, USA, Indonesia, Cambodia, Turkey, Greece and Tanzania.



**RUSSELL MORTIMER**  
**GEOPHYSICIST**

- Experienced in the application of geophysical techniques in mineral exploration for gold, platinum group elements (PGE's) and a broad range of base metals including, iron ore, nickel, copper, manganese, graphite as well as mineral sands and uranium.
- Experienced in geophysical exploration for nickel/copper sulphides and other base metals and is directly responsible for a number of well renowned geophysical discoveries.



**PETER SPITALNY**  
**GEOLOGIST**

- Senior exploration experience spans 30 years' exploration experience, focused upon gold and expert in lithium pegmatites. Has significant experience with manganese, nickel, copper.
- Member of the AusIMM and has acted for several publicly listed companies as a Competent Person, as defined by the JORC Code (2012). Has held board positions in public companies.



**PETER PEEBLES**  
**GEOLOGIST**

- Senior geologist with over 36 years' experience, largely working in Australia, Africa, Europe, and China.
- Specialising in Gold, manganese/iron, base metals including nickel, copper lead and zinc, and industrial metals based in China.
- Multiple ASX board and exploration management positions.



# Disclaimer

The information contained in this presentation has been prepared by TechGen Metals Ltd (ACN 624 721 035) (Company).

This presentation is not an offer, invitation, solicitation or other recommendation with respect to the subscription for, purchase or sale of any securities in the Company. This presentation has been made available for information purposes only and does not constitute a prospectus, short form prospectus, profile statement or offer information statement nor does it constitute investment or financial product advice (nor taxation, accounting or legal advice) and it is not intended to be used as the basis for making an investment decision.

This presentation does not include all available information and should not be used in isolation as a basis to invest in the Company. This presentation is not subject to the disclosure requirements affecting disclosure documents under Chapter 6D of the Corporations Act 2001 (Cth). The information in this presentation may not be complete and may be changed, modified or amended at any time by the Company, and is not intended to, and does not, constitute representations and warranties of the Company.

The Company does not have a significant operating history on which to base an evaluation of its business and prospects. Therefore, the information contained in this presentation is inherently speculative. Certain information in this presentation may contain references to visual results. The Company draws attention to the inherent uncertainty in reporting visual results. Visual estimates of mineral abundance should never be considered a proxy or substitute for laboratory analyses where concentrations or grades are the factor of principal economic interest. Visual estimates also potentially provide no information regarding impurities or deleterious physical properties relevant to valuations.

The information contained in this presentation is strictly confidential and you must not disclose it to any other person. While the information contained in this presentation has been prepared in good faith, neither the Company or any of its directors, officers, agents, employees or advisors give any representation or warranty, express or implied, as to the fairness, accuracy, completeness or correctness of the information, opinions and conclusions contained in this presentation. Accordingly, to the maximum extent permitted by law, none of the Company, its directors, employees or agents, advisers, nor any other person accepts any liability whether direct or indirect, express or limited, contractual, tortious, statutory or otherwise, in respect of, the accuracy or completeness of the information or for any of the opinions contained in this presentation or for any errors, omissions or misstatements or for any loss, howsoever arising, from the use of this presentation.

This presentation may contain statements that may be deemed “forward looking statements”. Risks, uncertainties and other factors, many of which are outside the control of the Company can cause actual results to differ materially from such statements. Such risks and uncertainties include, but are not limited to, exploration risks, tenure and access risks and commodity price volatility and exchange rate risks, as well as political and operational risks, and governmental regulation and judicial outcomes.

The Company makes no undertaking to update or revise such statements, but has made every endeavour to ensure that they are fair and reasonable at the time of making the presentation.

Investors are cautioned that any forward-looking statements are not guarantees of future performance and that actual results or developments may differ materially from those projected in any forward-looking statements made.

Authorisation - For the purpose of Listing Rule 15.5, this announcement has been authorised for release by the Board of Directors of TechGen Metals Limited.

Competent Person Statement - The information in this announcement that relates to Exploration Results is based on and fairly represents information compiled and reviewed by Andrew Jones, a Competent Person who is a member of the Australasian Institute of Mining and Metallurgy (AusIMM). Andrew Jones is employed as a Director of TechGen Metals Limited. Andrew Jones has sufficient experience that is relevant to the style of mineralisation and type of deposits under consideration and to the activity being undertaken to qualify as a Competent Person as defined in the 2012 edition of the Australasian Code of Reporting of Exploration Results, Mineral Resources and Ore Reserves. Andrew Jones consents to the inclusion in this announcement of the matters based on his work in the form and context in which it appears.



TECHGEN METALS  
LIMITED

# Contact Details

**ASHLEY HOOD**

MANAGING DIRECTOR

E: [ashley.hood@techgenmetals.com.au](mailto:ashley.hood@techgenmetals.com.au)

P: 0427 268 999

**ANDREW JONES**

TECHNICAL DIRECTOR

E: [andrew.jones@techgenmetals.com.au](mailto:andrew.jones@techgenmetals.com.au)

P: 0439 994 004

Address:

Level 1, 19 Ord Street, West Perth WA 6005

PO Box 901, West Perth WA 6872

Email: [admin@techgenmetals.com.au](mailto:admin@techgenmetals.com.au)

Website: [www.techgenmetals.com.au](http://www.techgenmetals.com.au)

