



ILUKA

Iluka Resources (ASX:ILU)

Macquarie Australia Conference

6 May 2026

sona
iluka
resources

This presentation has been prepared by Iluka Resources Limited (Iluka). By accessing this presentation you acknowledge that you have read and understood the following statement.

This presentation includes forward-looking statements reflecting Iluka's current expectations. These statements are expressed in good faith and the expectations and beliefs are genuinely held but no representation or warranty is being made by Iluka that the matters stated in this presentation will in fact be achieved or prove to be correct. Readers should not place undue reliance on any forward-looking statement.

Forward-looking statements are subject to known and unknown risks, uncertainties and assumptions that could cause the actual results or achievements of Iluka to differ materially from expectations. These risks and uncertainties include changes in exchange rate assumptions; changes in labour or product pricing assumptions; major changes in mine plans and/or resources; changes in equipment life or capability; changes in regulation and policy; emergence of previously underestimated technical challenges; increased costs and demand for production inputs; physical events that materially impact project timelines or production schedules; and environmental or social factors which may affect a licence to operate, including political risk.

Certain statements contained in this release are based on information prepared by third parties. Iluka does not make any representation or guarantee that this third-party material is accurate, complete or up-to-date.

Iluka does not undertake to release publicly any revisions to any forward-looking statements to reflect events or circumstances after the date of this presentation, or to reflect the occurrence of unanticipated events, except as may be required under applicable securities laws.

All figures are expressed in Australian dollars unless stated otherwise.

A global critical minerals company

Iluka is a major producer of processed mineral sands (zircon and titanium feedstocks) and is set to become a significant producer of refined rare earths

Iluka's operations are located in Australia

Iluka's objective is to deliver sustainable value

Critical minerals

Zircon, titanium and rare earths are used in a wide range of consumer and industrial applications and are essential for urbanisation, electrification, defence and sustainable development

Operational experience

Over 70 years of critical minerals exploration, mining, processing, marketing and rehabilitation, with a pipeline of projects to meet growing demand and diversify supply chains

Australian

Listed on the Australian Securities Exchange (ASX:ILU); market capitalisation of A\$3.5bn¹

20% holding in Deterra Royalties (ASX:DRR), cornerstone asset of BHP Mining Area C iron ore royalty; market capitalisation of A\$2.2bn¹

Secure supply

A secure and responsible supplier of critical minerals, with a demonstrated record of marketing non-exchange traded commodities to customers on the basis of quality and reliability

Near term priorities to deliver sustainable value



Balranald ramp-up

Targeting mid-2026 for investment case production

Eneabba rare earth refinery construction

Commissioning 2027

Rare earth offtake and feedstock agreements

Discussions progressing with multiple partners

Rare earth metallisation study

Study due for completion in 2026

Wimmera

DFS advancing

ersonal use only



ILUKA

Eneabba rare earths refinery

Australia's first fully-integrated rare earths refinery; production of material light and heavy separated rare earth oxides; commissioning 2027

Feedstock longevity

Multiple internal and external options

- ✓ Capable of processing a broad range of feedstocks including mineral sands concentrates, hard rock concentrates and ionic clay carbonates

Expertise

In-house and external

- ✓ Design, construction and commissioning supported by technical partnership with rare earth experts Carester and hiring of key rare earths personnel

Capacities

Australian refining hub

Total Rare Earth Oxide
23,000 tpa

NdPr Oxide
5,500 tpa

Dy/Tb Oxide
750 tpa

Funding

Fully funded via partnership with Australian government

- ✓ \$1.65bn non-recourse loan from the Australian Government
- ✓ Flexible debt terms with preferential cash flows to Iluka

Stockpile

Low-cost feedstock for commissioning

- ✓ Development underpinned by ~1 million tonne¹ Eneabba rare earths stockpile

Products

Light and heavy rare earth oxides

- ✓ Favourable feedstock assemblage enables production of full suite of separated magnet rare earth oxides and range of carbonate products

Flowsheet

Proven technology

- ✓ Flowsheet based on proven technology used to process Iluka monazite historically in France

Timeline

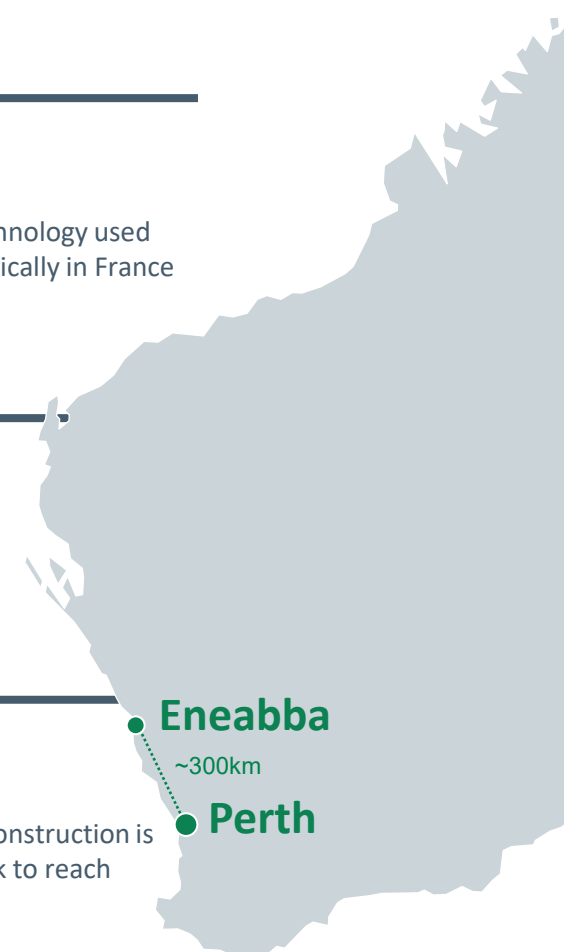
Close proximity to production

- ✓ Commissioning and first production in 2027

Construction

Well advanced

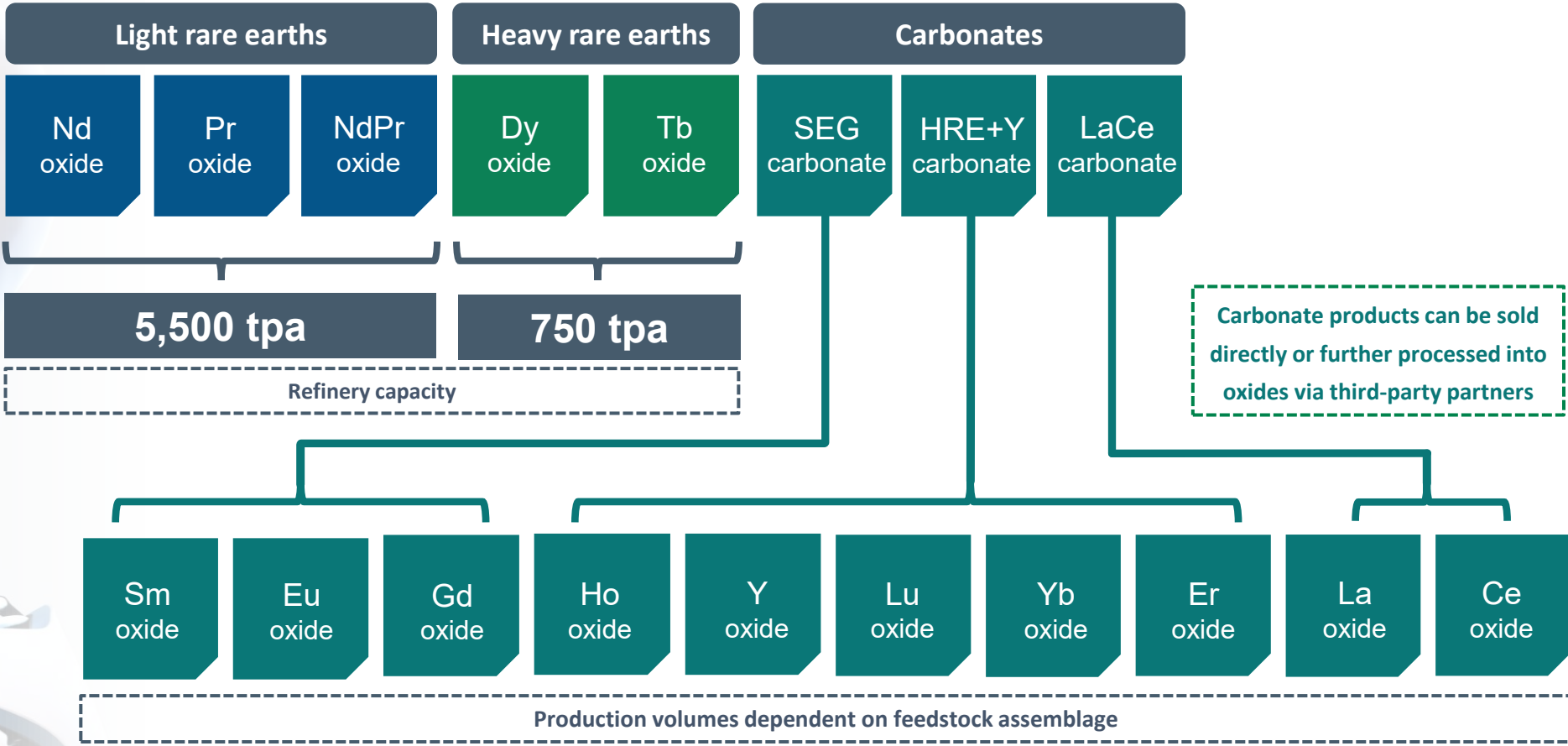
- ✓ \$1.1bn spent and committed; construction is over 50% complete and on track to reach 75% by year end



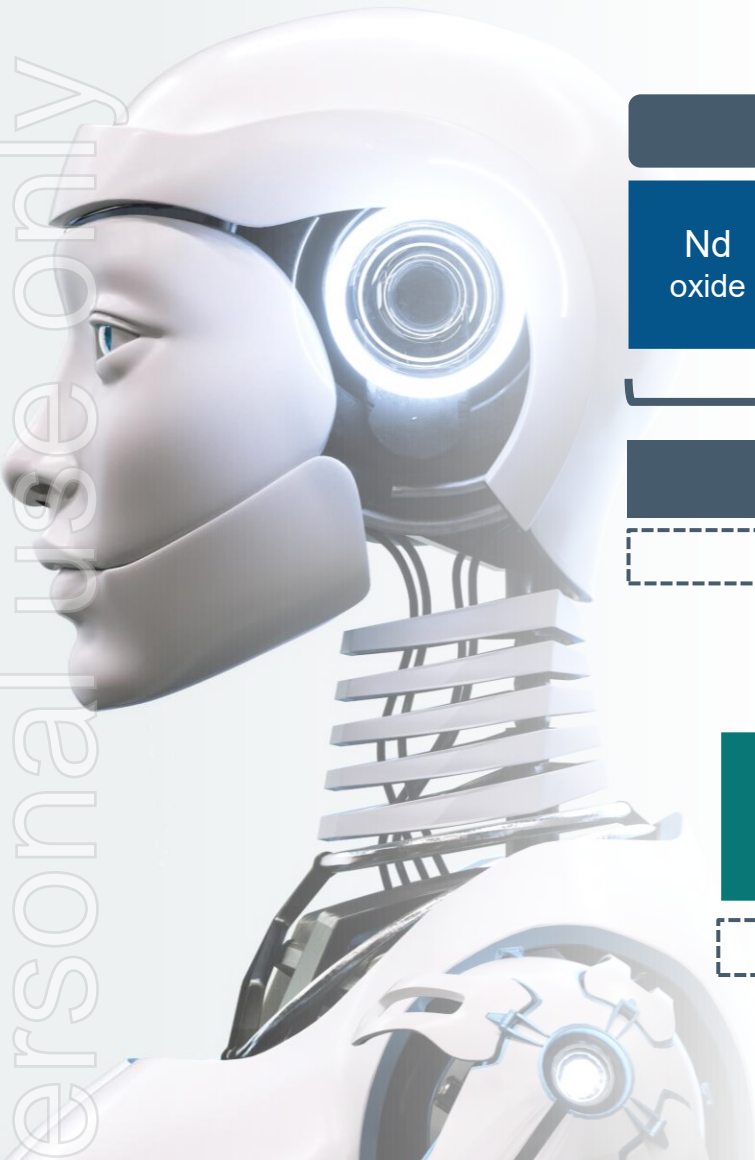
1. Refer to slide 16

Products – light and heavy rare earth oxides

Iluka will produce the full suite of separated magnet rare earth oxides and a range of carbonate products



Personal use only



Strategic infrastructure asset capable of processing a broad range of feedstocks including mineral sands concentrates, hard rock concentrates and ionic clay carbonates

Eneabba stockpile
 1 million tonnes¹ of heavy mineral concentrate rich in light and heavy rare earths

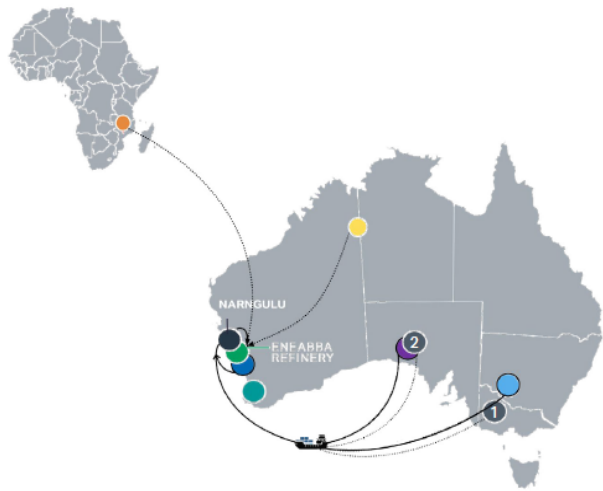
Operations
 Jacinth-Ambrosia, Cataby and Balranald (commissioning) will continue to supply rare earth minerals to the stockpile

Development
 Wimmera definitive feasibility study production parameters contemplate supply of ~15ktpa of rare earth concentrate for 25+ years²

Iluka has various deposits at earlier stages of project evaluation

Third parties
 Existing supply agreements include:

- **Northern Minerals** for the supply of rare earth concentrate containing 30,500t³ of rare earth oxides
- **Lindian Resources** for the supply of 6,000tpa of rare earth concentrate for 15 years⁴



Iluka Operations and Processing Facilities

- **Narngulu Mineral Separation Plant**
Processing: zircon, rutile, ilmenite, rare earths
- **Eneabba Rare Earths Refinery**
Refining: rare earths
- **Cataby Mine**
Mining: ilmenite, zircon, rutile, rare earths
- **Capel Processing Plant**
Processing: synthetic rutile
- **Jacinth-Ambrosia Mine**
Mining: zircon, rutile, ilmenite, rare earths
- **Balranald Mine**
Mining: zircon, rutile, ilmenite, rare earths

Strategic Partnerships

- **Northern Minerals**
Browns Range – rare earths deposit rich in dysprosium, terbium and yttrium
- **Lindian Resources**
Developing the Kangankunde mine in Malawi – mine life of 45 years

Iluka Projects

- 1 **Wimmera Project – Definitive Feasibility Study**
To mine: zircon, rutile, ilmenite, rare earths
- 2 **Typhoon, Sonoran, Tripitaka and Atacama Projects – Various Studies**
To mine: zircon, rutile, ilmenite, rare earths

1. Refer to slide 16
 2. Iluka Resources ASX announcement, Revised Wimmera Ore Reserve Estimate and Updated Mineral Resource Estimate, 22 February 2023
 3. The strategic partnership with Northern Minerals Ltd is available to view at [strategic-partnership-with-northern-minerals-rare.aspx \(iluka.com\)](https://www.iluka.com/strategic-partnership-with-northern-minerals-rare.aspx)
 4. The agreement with Lindian Resources is available to view at [rare-earth-concentrate-supply-agreement-lindian-resources.pdf](https://www.iluka.com/rare-earth-concentrate-supply-agreement-lindian-resources.pdf)

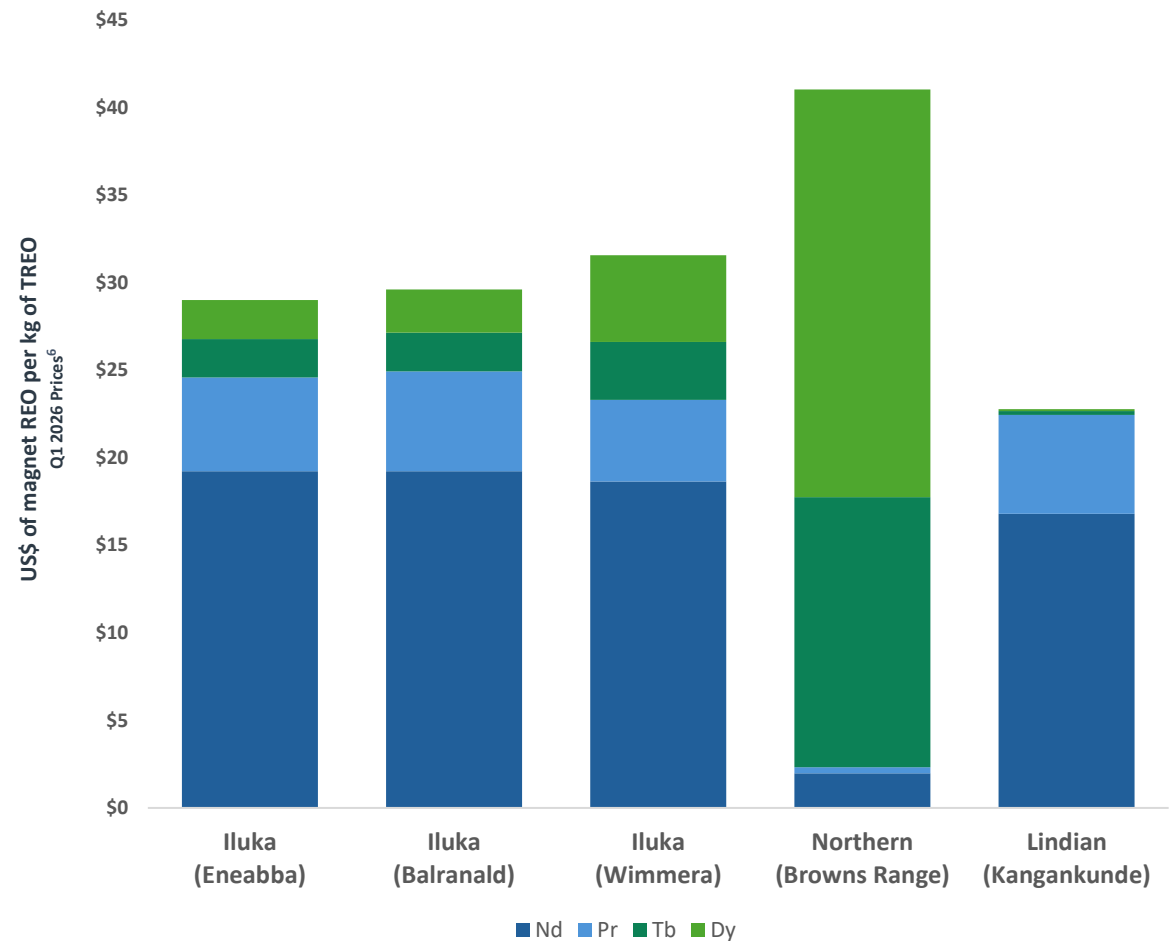
Favourable feedstock assemblage – light and heavy rare earths

Multiple internal and external feedstock options to secure supply of the critical light and heavy rare earths: NdPr, Dy, Tb and Yttrium

Favourable assemblage of feedstock options to enable significant heavy rare earths production

REO	REO assemblages ¹				
	Iluka Eneabba ²	Iluka Wimmera WIM100 ²	Iluka Balranald ³	Northern Minerals Wolverine ⁴	Lindian Kangankunde ⁵
La	21.8%	17.7%	20.8%	0.7%	28.8%
Ce	45.0%	37.4%	45.5%	1.9%	50.3%
Pr	4.6%	4.0%	4.9%	0.3%	4.9%
Nd	16.6%	16.1%	16.6%	1.7%	14.5%
Sm	2.5%	2.7%	3.0%	2.1%	0.9%
Eu	0.1%	0.1%	0.0%	0.5%	0.2%
Gd	1.4%	2.3%	2.0%	6.2%	0.3%
Tb	0.2%	0.3%	0.2%	1.4%	0.0%
Dy	0.9%	2.0%	1.0%	9.4%	0.1%
Ho	0.2%	0.4%	0.1%	1.9%	0.0%
Er	0.5%	1.2%	0.4%	5.3%	0.0%
Tm	0.1%	0.2%	0.1%	0.7%	0.0%
Yb	0.4%	1.1%	0.3%	4.2%	0.0%
Lu	0.1%	0.1%	0.0%	0.6%	0.0%
Y	5.6%	14.2%	5.0%	63.1%	0.2%

Magnet REO contribution to basket value



1. REO assemblages in concentrate shown. Scandium (Sc) excluded from Iluka assemblages for consistent comparison
2. Iluka Resources ASX announcement, Strategic Partnership with Northern Minerals, 26 October 2022
3. Iluka Resources ASX announcement, Balranald Development – Final Investment Decision, 21 February 2023
4. Northern Minerals ASX announcement, Definitive Feasibility Study for Browns Range, 15 September 2025
5. Lindian Resources ASX announcement, Kangankunde Project Stage 1, Outstanding Feasibility Study Results, 1 July 2024
6. Adamas Intelligence, Rare Earth Pricing Quarterly Outlook, Q2 2026, 2026 Q1 average China export (FOB) prices

Timeline – close proximity to production



Key milestones

- ✓ Construction accelerating
- ✓ SMPEI contract award
- ✓ First offtake agreement
- ✓ Metallisation study complete

- ✓ Construction complete
- ✓ Commissioning begins
- ✓ First oxides produced

- ✓ Production ramp-up

- ✓ Ramp-up complete

Construction

Commissioning

Ramp-up



ILUKA

Video

ersonal

ersonal use only

[Eneabba rare earths refinery – flyover video](#)



ILUKA

Q&A





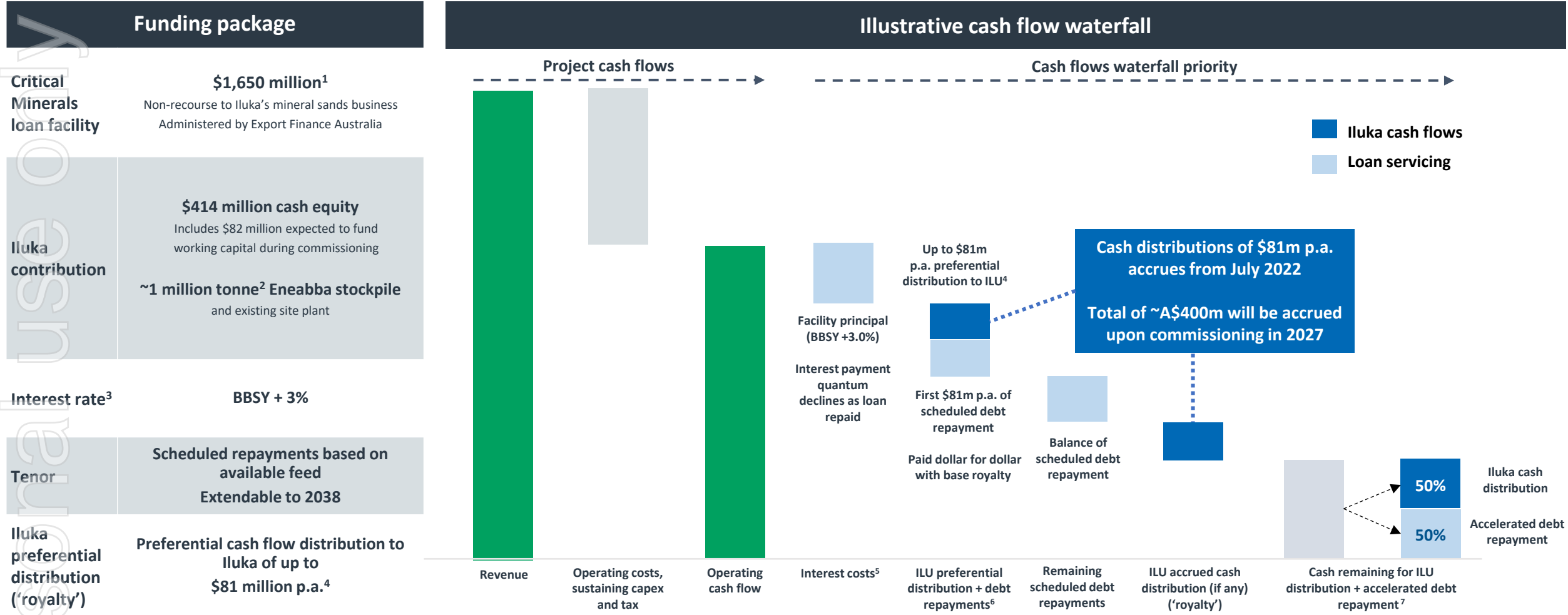
ILUKA

Appendix

ersonal

Funding – fully funded via partnership with Australian Government

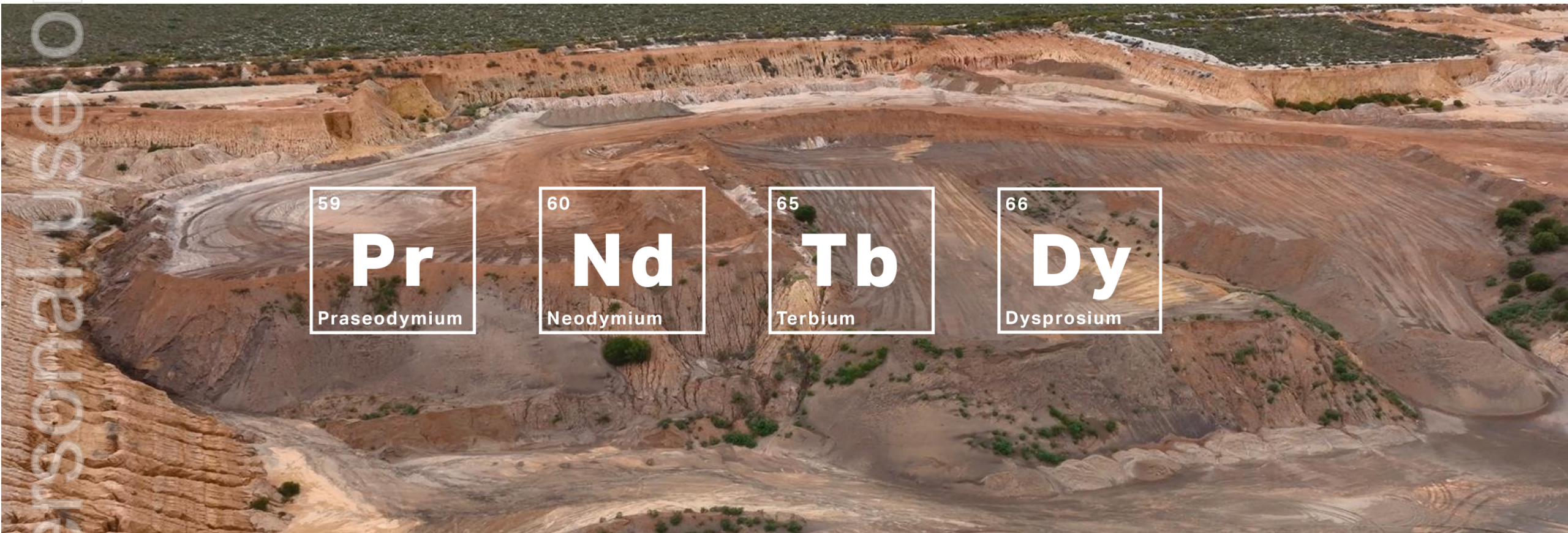
Partnership includes limited equity contribution from Iluka and unique debt funding; flexible debt that is non-recourse to the mineral sands business with preferential cash flows



1. Final \$400 million of EFA debt subject to offtake agreements satisfactory to the Australian Government. 2. Refer to slide 16 for more information on Eneabba rare earths stockpile. 3. Interest is capitalised interest accrued during construction and commissioning and funded under these facilities. 4. Preferential cash flow mechanism reduces to as low as \$40 million p.a. for first four years under low feedstock scenario of Eneabba stockpile only. Preferential distribution (royalty) payment to Iluka of up to \$81 million p.a., capped at cumulative \$900 million, accrues from July 2022, payable from project cash flows. 5. Interest capitalises during construction and commissioning. Interest is then payable quarterly. 6. Loan repayment obligations commence the earlier of Project Completion Date or December 2027. Facility loan amortisation schedule extendable up to 2038 unless refinery feed sources are forecasted to deplete earlier. 7. Additional cash for distribution subject to minimum cash requirements and financial ratio tests

All of Iluka's deposits contain rare earths; since the early 1990s, Iluka has stockpiled rare earth minerals produced as a co-product of the company's mineral sands processing operations

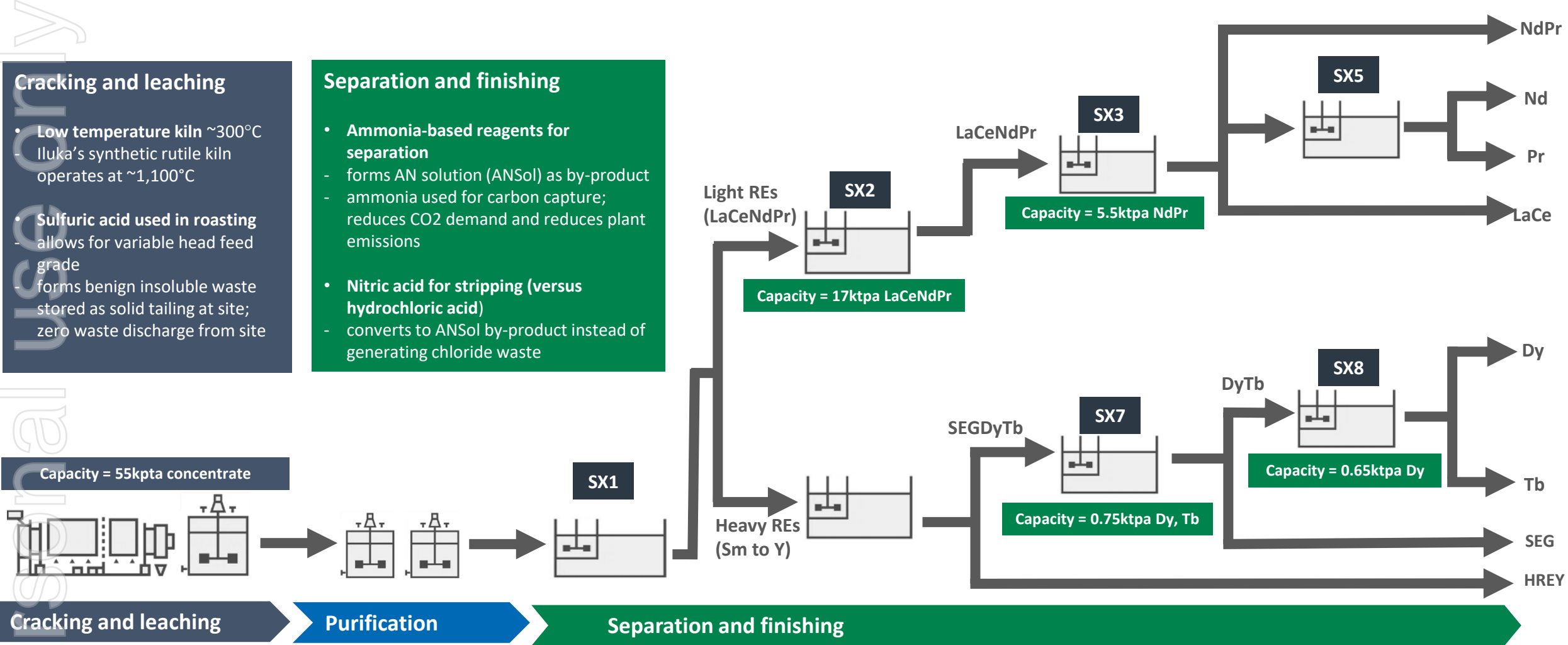
- The Eneabba stockpile contains ~1 million tonnes of material rich in both light and heavy rare earths¹
- Stockpile will provide the initial feed for commissioning to Iluka's Eneabba rare earths refinery – sufficient to feed refinery to ~2035
- Iluka continues to add material to the stockpile on a regular basis from existing operations



1. Excludes future replenishment from Cataby, Balranald and Jacinth-Ambrosia. Refer to Iluka Resources ASX release, 2025 Annual Report including Appendix 4E, 18 February 2026, for complete Mineral Resource and Ore Reserve disclosure

Eneabba refinery flowsheet – proven technology

Flowsheet based on proven rare earth processing technology used for decades, including historical refining of Iluka’s rare earth feedstock



Note: Only selected circuits most relevant for modelling purposes shown. SX circuit capacities assume an average recovery of 90% across refinery. First feed or circuit constraint reached determines feed rate

Iluka has processed and marketed critical minerals for over 70 years

The company is implementing operational readiness plans in line with the schedule for Eneabba's commissioning, including detailed planning and personnel assignment



**Organisational
planning and
business
integration**



**Commissioning
preparation, start-up
scheduling and
training**



**Major
operational
supply contracts
advancing**



**Detailed
maintenance and
asset management
approach**



Carester are the pre-eminent experts in rare earth refining technology. They have been embedded with the Iluka owners team throughout design and engineering phases and will continue to be heavily involved throughout construction, commissioning and ramp-up.



Dan McGrath
B.Sc (Math)
Head of Rare Earths

Dan joined Iluka in 1993. Dan has held senior positions across Iluka's operations whilst also having held metallurgy and process engineering roles in Australia, Indonesia and Sierra Leone.

Most recently he was Chief Technology Officer where he oversaw the technical development and metallurgy functions.



Grant McAuliffe
B.Sc (Metallurgy), Grad. Dip App. Fin. & Inv.
Chief Metallurgist Rare Earths

Grant has spent the past 10 years with Lynas. He was in-house EPCM, General Manager and Site Senior Executive for Lynas' Kalgoorlie Rare Earth Processing Facility from concept to first feed. Prior to Kalgoorlie, Grant held various operational and project leadership roles for Lynas in Malaysia culminating as GM of the Lynas Advanced Materials Plant.

Grant has 29 years' experience in processing (including copper, titanium, zircon and rare earths) and previously worked for Iluka for 14 years across multiple sites.



ILUKA

ersonal use only

For more information contact

Luke Woodgate, General Manager, Investor Relations and Corporate Affairs

investor.relations@iluka.com

