

## Project Exploration Update & High-Grade Fluorite

### Highlights:

#### Yinnetharra

- **New Mining Lease Application (M09/0186)** submitted to cover underground mining potential of the Malinda pegmatites downplunge
- **Fluorite mineralisation identified across a large regional extent** during exploration with rockchip assays of Quartz Fluorine Veins (QZF) including:
  - **86.09% CaF<sub>2</sub>** – CAF0066
  - **85.89% CaF<sub>2</sub>** – CAF0020
  - **75.61% CaF<sub>2</sub>** – CAF0054
  - **62.67% CaF<sub>2</sub>** – CAF0015
- Several shallow drill holes completed during the recent Lithium exploration program, returning intercepts:
  - **8m @ 18% CaF<sub>2</sub>** from 15m in CGEX002
  - **2m @ 23% CaF<sub>2</sub>** from 34m in GGEX007
  - **52m @ 2.28% CaF<sub>2</sub>** from 0m in CGEX013
  - **7m @ 16.4% CaF<sub>2</sub>** from 48m in CGEX006
- First pass results have highlighted high-grade structures and broad intervals **indicating the potential for a large, mineralised fluorite system**

#### Mt Ida

- Drilling continues to provide lithium, tantalum and rubidium intercepts contributing to increased resource confidence and project development workflows. Significant intercepts include<sup>1</sup>:
  - **11.9m @ 1.36% Li<sub>2</sub>O** from 423m - BDG001
  - **7.4m @ 1.36% Li<sub>2</sub>O** from 219m - DFS674A
  - **6m @ 1.19% Li<sub>2</sub>O** from 170m - NEB047
  - **5m @ 1.71% Li<sub>2</sub>O** from 332m - DFS619
- Downstream testing of a Mt Ida mica concentrate to **produce battery grade LCE** has successfully generated a **99.8% Lithium Carbonate (Li<sub>2</sub>CO<sub>3</sub>)**
- **Further advanced testwork is underway** using available diamond core to optimise and de-risk the Mt Ida Lithium processing flowsheet
- **Scoping Study to commence** for the Mt Ida Project

#### Corporate

- As of 31 March 2025, Delta's cash balance was **\$52.2M** and additional ASX-listed investments based on closing prices on 8 May 2026 of **~ \$120M<sup>2</sup>**.

Delta Lithium Limited (ASX: DLI) ("Delta" or "the Company") is pleased to provide an exploration update for its 100% owned Yinnetharra and Mt Ida Lithium Projects. At Yinnetharra, regional exploration has returned some interesting results, with follow up of minor historical fluorite rock chips resulting in the discovery of a wider area of fluorite mineralisation and subsequent high-grade results from a brief drill test. Assays of economic fluorite grade are present across an initial three main areas which are 16km apart. The early understanding of the potential scale of these discrete systems is improving based upon these results

<sup>1</sup> Intercepts are from Mt Ida gold drilling by Ballard Mining (BM1) & do not represent true widths

<sup>2</sup> Shares in listed investments include 156M BM1 (subject to escrow), 5M MEX and 16.1M JAV

and now indications are that a large portion of the Project is prospective for fluorite mineralisation.

At Mt Ida, drilling by Ballard Mining (ASX:BM1) continues to intercept LCT pegmatites which are providing Delta with ongoing high-grade infill results and increased resource confidence at minimal cost. Diamond core intercepts will provide additional material for ongoing metallurgy workflows.

**Commenting on ongoing activities, Delta Lithium Managing Director, James Croser said;**

*“The geology team at Yinnetharra continues to deliver a solid greenfields performance, with exciting fluorspar assays coming from the ongoing fieldwork campaign. Opportunistic drilling of these surface expressions during the recent program has yielded very high-grade results worthy of future follow up.*

*Additionally, an adjacent mining lease application to the current Malinda application has been submitted, to allow for potential underground extensions to mining as the Malinda pegmatites plunge to the east at depth.*

*At Mt Ida, further lithium results continue to increase the drill density in the upper portions of Sister Sam and Timoni, which will provide valuable certainty to a scoping study to be commenced this quarter. The additional diamond core from these holes is particularly useful as the Company explores various metallurgy workflows with regard to tantalum and rubidium byproducts.”*

## **Yinnetharra Regional Exploration**

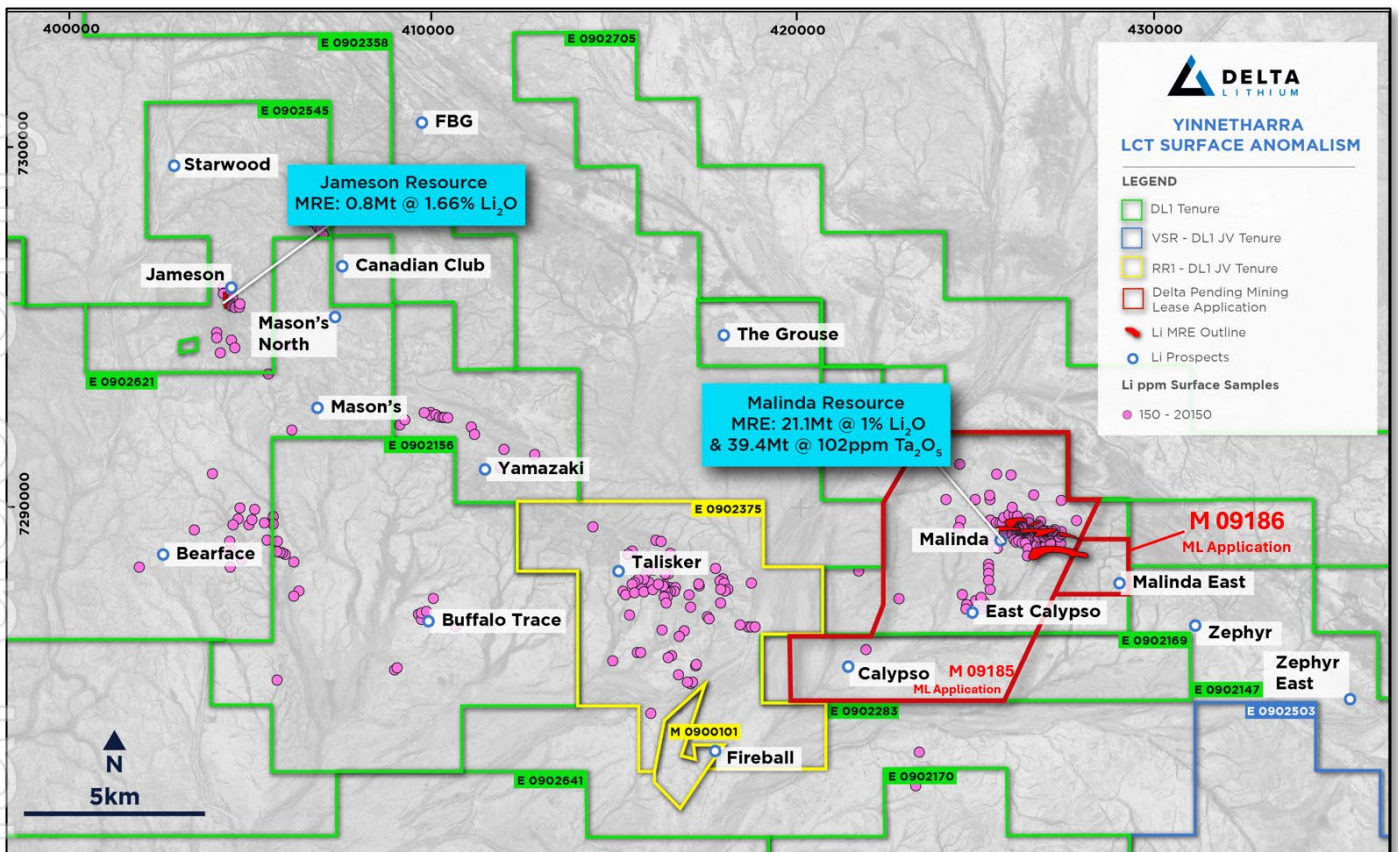
The Yinnetharra Lithium project is located in the Gascoyne region of Western Australia. Delta Lithium has 2,300km<sup>2</sup> of project tenure 100% owned and as Farm-in Joint Ventures. A mineral resource estimate (MRE) update for Yinnetharra was released in March 2025 of **21.9 Mt @ 1% Li<sub>2</sub>O and 75ppm Ta<sub>2</sub>O<sub>5</sub>** and an **additional 17.5Mt @ 136ppm Ta<sub>2</sub>O<sub>5</sub>**. Delta controls over 80km of prospective stratigraphy within the Leakes Springs metasediment package, hosting the Malinda and Jameson resources.

The Malinda Project is well advanced with DFS-level metallurgy and geotechnical studies<sup>3</sup> completed on the M1 orebody and a mining lease application submitted over the area. An additional mining lease M09/186 has recently been submitted to allow for deeper easterly plunge extensions of the M1 pegmatite that may be mined from underground in the future.

As part of the current regional campaign, exploration work has continued across the Project and JV tenure. The team have been conducting systematic surface exploration and mapping across prospective areas and generated over 25 prospects from numerous surface pegmatites. No significant lithium intercepts were received from drilling in the current batch of assays. Although lithium is the primary focus, the field team has identified a number of other interesting anomalies during recent exploration activities.

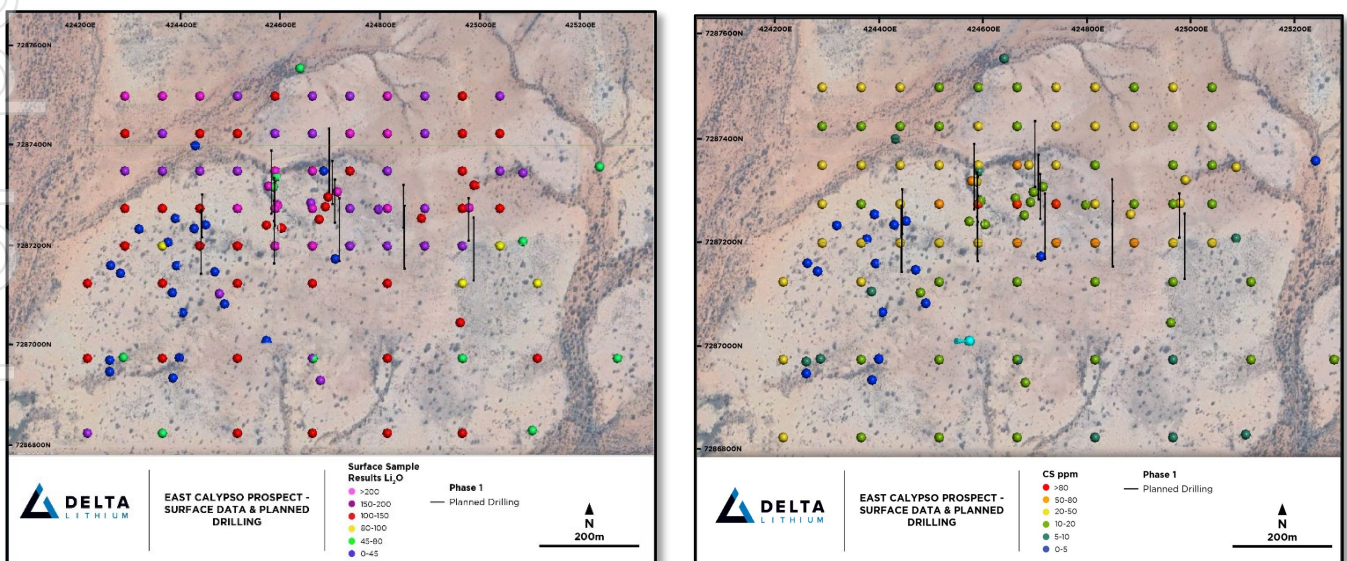
The geology at Yinnetharra remains highly prospective for lithium mineralisation and is excellent for early-stage exploration with near-fresh rock exposed across large portions of the 2,300sq.km project area. Exploration focus is now expanding to the lithium prospects that are greater distances away from the Malinda area.

<sup>3</sup> **Yinnetharra Operational & Metallurgical test work update** released to the ASX 21<sup>st</sup> January 2025



**Figure 1:** Plan View to Yinnetharra MRE's, New Mining Lease over East Malinda and Li surface anomalism across Project

More than 1,200 samples remain in the lab from the recent RC drilling. Initial results from first passes at Yamazaki and Masons prospects have not produced any significant intercepts. Results from East Calypso are expected in the coming week, which is a high priority target proximal to the same source granite for the Malinda system – see Figure 2. The recent drilling did intercept a number of pegmatites during drilling of similar visual composition to the M1 pegmatite with results pending. Assessment of results are ongoing.



**Figure 2:** Plan Views to East Calypso with surface data showing lithium & caesium anomalism

## Fluorite Mineralisation

Ongoing exploration activities at Yinnetharra has returned some extremely promising fluorite results from both surface sampling and a short, shallow drilling campaign. Surface rock chips taken from at least three distinct locations across Yinnetharra have returned economic grades of  $\text{CaF}_2$  in veins that are more than 16 km apart, suggesting there may be significant potential for large-scale fluorite mineralisation at Yinnetharra—see Figure 3. Some historical work was completed in 2001 by Parkmin (see Appendix 2D for full surface results), with follow up work completed by Delta which has confirmed historic values as well as extended and identified new areas of mineralisation.

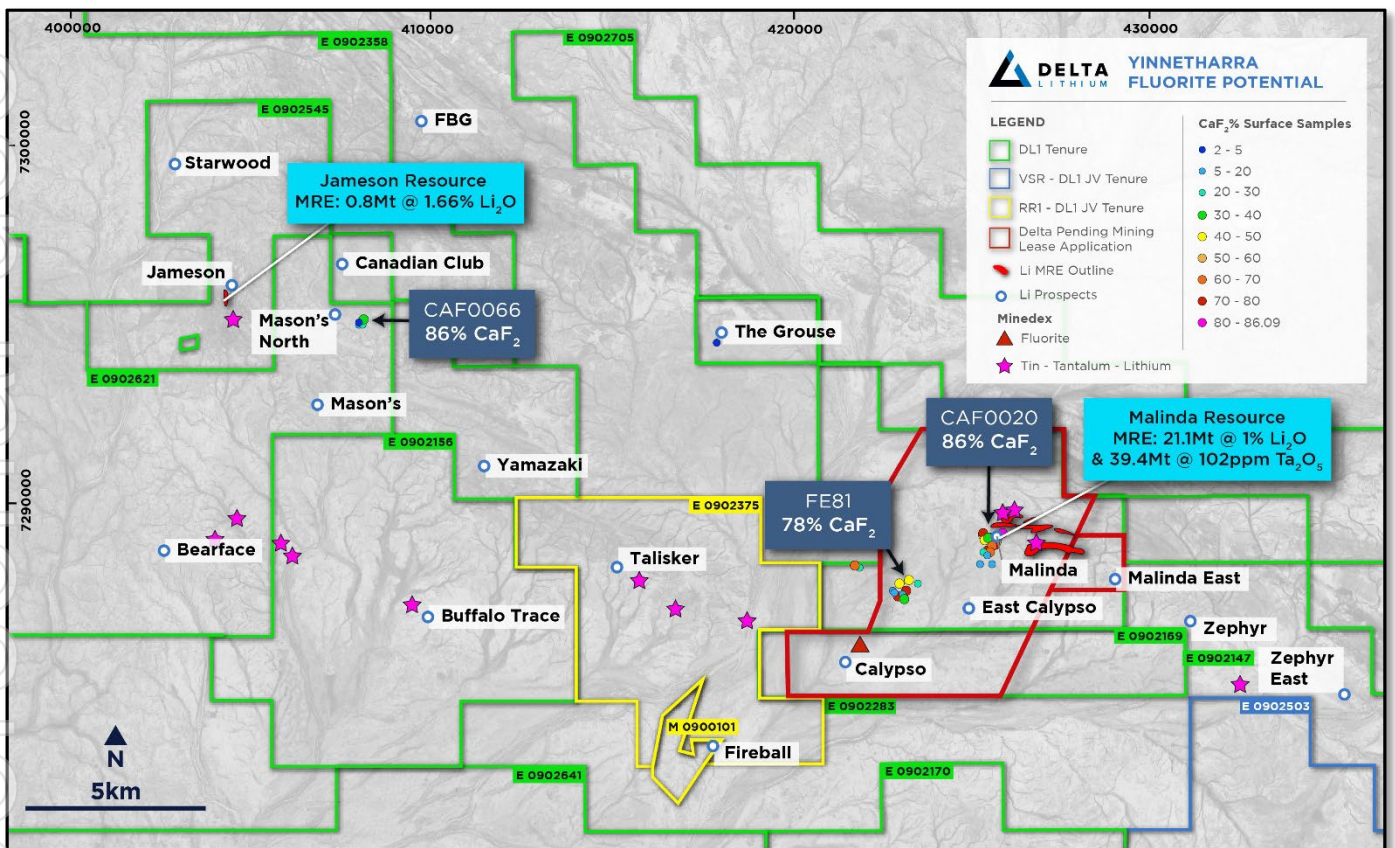


Figure 3: Plan View to Li MRE's and  $\text{CaF}_2$  surface anomalism across the project

An opportunistic, shallow drill program to test these initial fluorite targets was completed for 876m while the rig was mobilising back to East Malinda. These holes were designed to test some of the more obvious areas of surface mineralisation, where ground conditions permitted with minimal earthworks and existing heritage clearances. This drilling has confirmed the presence of high-grade fluorite at depth - Figure 4. Coincidentally, one of the first fluorite target zones is immediately proximal to the Malinda Li MRE and sits within the Mining Lease Application M09/185.

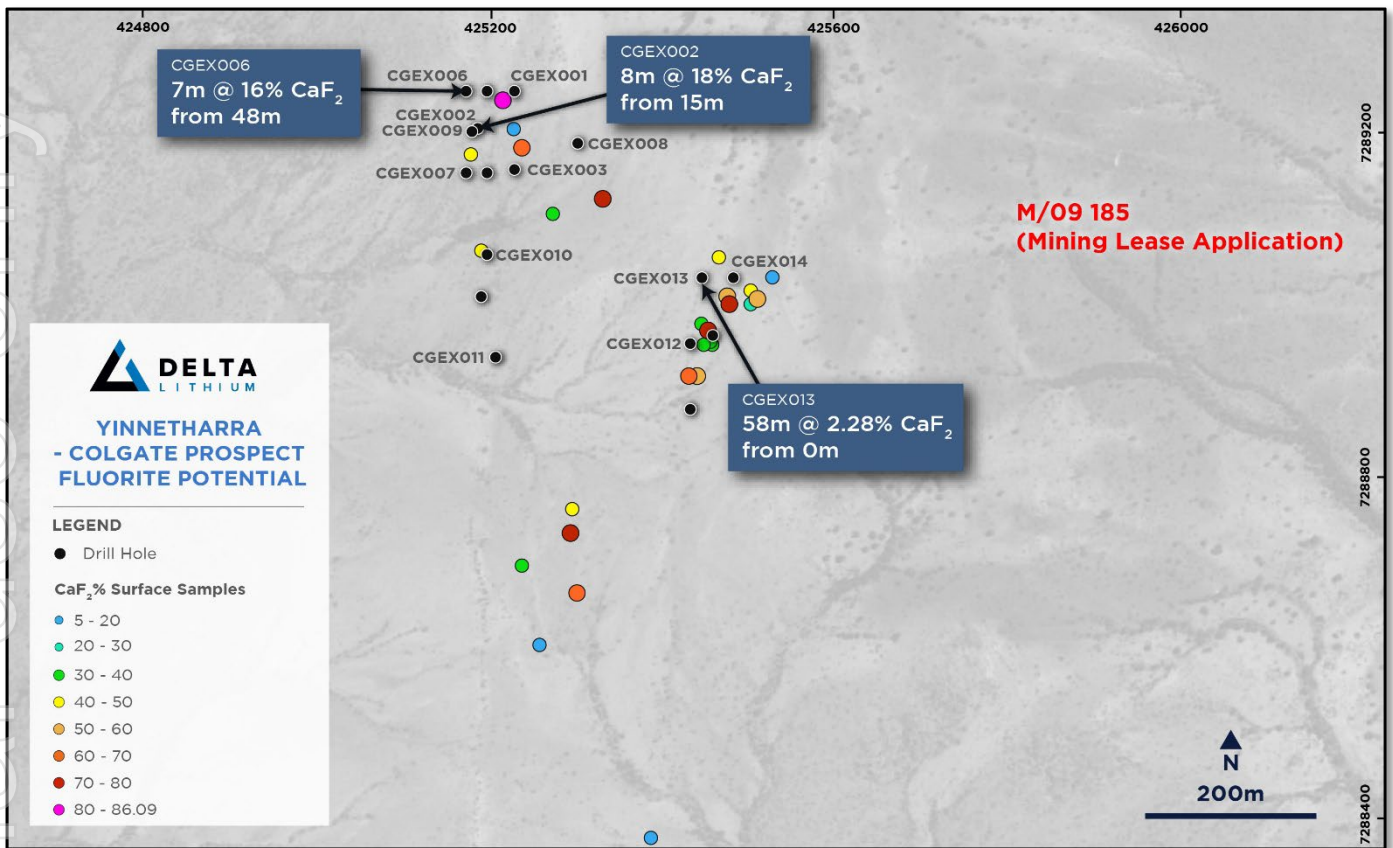


Figure 4: Plan view to recent drill collars showing surface CaF<sub>2</sub> results & some notable drill intercepts

These exciting early results have improved the understanding of the hydrothermal system, confirming both vein hosted and broader granite/greisen hosted fluorite mineralisation. The geochemical dataset from this initial first pass work maintains a correlation with pathfinder elements such as lead and bismuth, which will allow an exploration vectoring model to be generated and applied across the wider project area.

Concurrent with the lithium development work, and leveraging a growing geological dataset at Yinnetharra, Delta's team can now diligently assess the entire project tenure to investigate the fluorite potential across any prospective terrain and determine if a genuine value-adding opportunity exists.

### Fluorspar Market

Fluorspar is classified as a critical mineral in developed and growing countries such as the United States, Japan, the EU, India and many more. Global fluorspar supply is heavily concentrated in China, which has increased strategic interest in the development of new high-quality sources in stable jurisdictions. The market is typically divided into acid-grade fluorspar (>97% CaF<sub>2</sub>), which commands premium pricing due to its use in chemical and battery applications, and lower-value metallurgical grades (Metspar).

Fluorspar is an essential raw material with a growing number of applications such as;

- Hydrofluoric acid (HF) production
- Lithium-ion battery electrolytes
- Refrigerants and fluoropolymers
- Aluminium smelting
- Steelmaking flux
- Uranium and nuclear processing
- Semiconductor manufacturing

Fluorine-based compounds are critical in the manufacture of lithium battery electrolytes, linking fluorspar directly to the growing electrification and energy storage sectors and aligning broadly with Delta Lithium’s critical minerals markets.

Fluorspar pricing has remained robust in recent years ranging from \$450 - \$600 USD/ton, and is supported by tightening global supply into the future, growing downstream fluorochemical demand and increasing strategic importance to battery and critical mineral supply chains.

## Mt Ida Lithium Update

Mt Ida is located approximately 240km north of Kalgoorlie in Western Australia. The Project area resides on granted mining leases and is fully permitted for commencement of open pit and underground mining at the main Sister Sam and Timoni lithium resources.

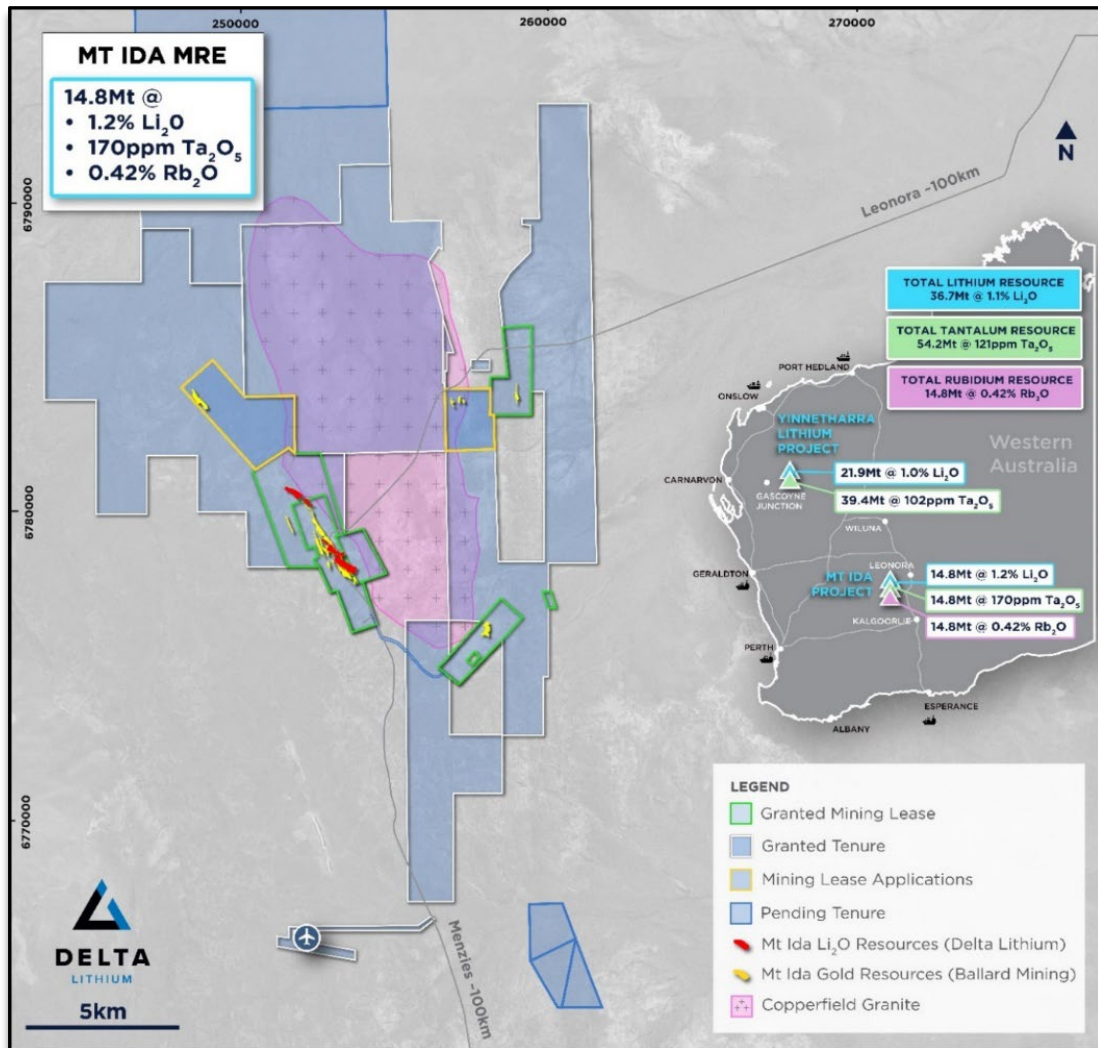


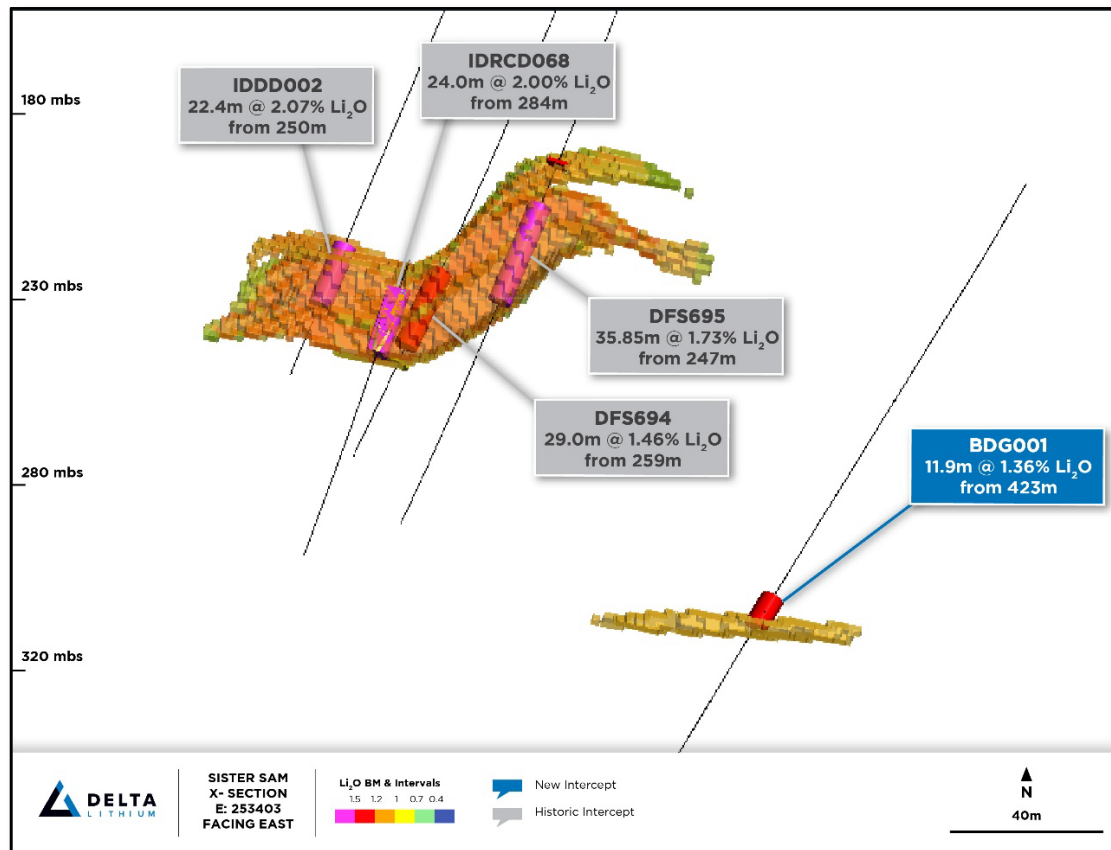
Figure 5: Mt Ida Project and Tenure with lithium, tantalum & rubidium resources

Ballard Mining’s (ASX:BM1) current gold exploration drilling, mainly in the vicinity of their Baldock and Meteor gold resources, has continued to return high-grade mineralised lithium intervals for Delta. These intercepts demonstrate the excellent quality of the Mt Ida lithium resource while also significantly increasing confidence in the model.

These additional infill holes have been used to refine the existing MRE model and will be incorporated into

the next resource update. This drilling also provides additional high-grade diamond core which Delta is utilising for ongoing metallurgical testwork programs supporting flowsheet optimisation.

Notably, one of the recent intervals has intercepted the footwall pegmatite approximately 100m below Sister Sam which has returned **11.9m @ 1.36% Li<sub>2</sub>O** in BDG001 from 423m. This interval is on the very fringe of the current model which bodes well for down-dip continuity and represents a compelling target for future drilling – see section on Figure 6.



**Figure 6:** 20m cross section showing intercepts from Sister Sam and recently discovered footwall pegmatite

## Next Steps

### Yinnetharra

- Receive and interpret final exploration RC drill results
- Continue lithium prospect generation on the broader unexplored regional tenure, including geochem sampling and mapping
- Conduct first pass exploration and targeting assessment for fluorite across prospective tenure, including testing the database for lead/bismuth anomalism
- Continue to advance project development and approvals work programs

### Mount Ida

- Incorporate recent drill results into the models
- Conduct further downstream testwork, including mica concentrate generation and optimisation
- Commence the Mt Ida Scoping Study

Release authorised by the Managing Director on behalf of the Board of Delta Lithium Limited.

For further information, please contact:

**Delta Lithium**

James Croser, Managing Director  
Peter Gilford, CFO & Company Secretary  
+61 8 6109 0104  
[info@deltalithium.com.au](mailto:info@deltalithium.com.au)

**Investor/Media Enquiries**

Sodali & Co  
Russell Quinn +61 403 322 097

**About Delta Lithium**

Delta Lithium (ASX: DLI) is an exploration and development company focused on bringing high-quality, lithium-bearing pegmatite deposits, located in Western Australia, into production. With current global JORC compliant resources of 36.5Mt@1.0% Li<sub>2</sub>O, strong balance sheet and an experienced team driving the exploration and development workstreams, Delta Lithium is rapidly advancing its Projects.

The Mt Ida Project has coincident gold and lithium orebodies and holds a critical advantage over other developers with existing Mining Leases and an approved Mining Proposal. Delta Lithium is pursuing a development pathway to unlock maximum value for shareholders. Delta has recently spun out its gold assets into Ballard mining on 14<sup>th</sup> July 2025 and retains a 34.4% equity stake in this company.

Delta Lithium also holds the highly prospective Yinnetharra Lithium Project, with exciting lithium discoveries at the Malinda and Jamesons prospects. The Company is currently conducting exploration activities at Yinnetharra with fieldwork continuing in 2026 across our large tenure package, testing additional targets and aiming to build on the current JORC Resources.

**Competent Person's Statement**

Information in this Announcement that relates to exploration results is based upon work undertaken by Mr. Shane Murray, a Competent Person who is a Member of the Australasian Institute of Geoscientists (AIG). Mr. Murray has sufficient experience that is relevant to the style of mineralisation and type of deposit under consideration and to the activity which he is undertaking to qualify as a 'Competent Person' as defined in the 2012 Edition of the 'Australasian Code for Reporting of Exploration Results, Mineral Resources and Ore Reserves' (JORC Code). Mr. Murray is an employee of Delta Lithium Limited and consents to the inclusion in this announcement of the matters based on his information in the form and context in which it appears.

Information in this Announcement that relates to Metallurgical analysis of mica concentrate and downstream processing is based upon work undertaken by Mr. Nick Vines, a Competent Person who is a Member of the Australasian Institute of Mines and Metallurgy (Aus IMM). Mr. Vines has sufficient experience that is relevant to the style of mineralisation and type of deposit / concentrate under consideration and to the activity which he is undertaking to qualify as a 'Competent Person' as defined in the 2012 Edition of the 'Australasian Code for Reporting of Exploration Results, Mineral Resources and Ore Reserves' (JORC Code). Mr. Vines is an employee of Strategic Metallurgy and a consultant to Delta Lithium Ltd, Nick consents to the inclusion in this announcement of the matters based on his information in the form and context in which it appears.

Refer to [www.deltalithium.com.au](http://www.deltalithium.com.au) for past ASX announcements.

Past Exploration results and Mineral Resource Estimates reported in this announcement have been previously prepared and disclosed by Delta Lithium in accordance with JORC 2012. The Company confirms that it is not aware of any new information or data that materially affects the information included in these market announcements. The Company confirms that the form and content in which the Competent Person's findings are presented here have not been materially modified from the original market announcement, and all material assumptions and technical parameters underpinning Mineral Resource Estimates in the relevant market announcement continue to apply and have not materially changed. Refer to [www.deltalithium.com.au](http://www.deltalithium.com.au) for details on past exploration results and Mineral Resource Estimates.

**Disclaimer**

This release may include forward-looking and aspirational statements. These statements are based on Delta Lithium management's expectations and beliefs concerning future events as of the time of the release of this announcement. Forward-looking and aspirational statements are necessarily subject to risks, uncertainties and other factors, some of which are outside the control of Delta Lithium, which could cause actual results to differ materially from such statements. Delta Lithium makes no undertaking to subsequently update or revise the forward looking or aspirational statements made in this release to reflect events or circumstances after the date of this release, except as required by applicable laws and the ASX Listing

Refer to [www.deltalithium.com.au](http://www.deltalithium.com.au) for past ASX announcements.

## Appendix 1 A – Lithium Assay Results from recent Mt Ida Drilling Information

HoleID	From	To	Length	Li <sub>2</sub> O %	Ta <sub>2</sub> O <sub>5</sub> ppm	Fe <sub>2</sub> O <sub>3</sub> %	Rb <sub>2</sub> O %
BDG001	423.04	435	11.96	1.36	325	0.02	0.56
BDG037	680.88	687.61	6.73	0.73	51	0.80	0.22
DFS594A	181	188	7	0.7	156	0.50	0.24
DFS619	332.03	337	4.97	1.71	218	Pending	0.39
DFS641	439.09	442.15	3.06	0.66	314	Pending	0.24
DFS674A	219	226.42	7.42	1.36	268	Pending	0.53
DFS674B	221	225	4	1.16	224	Pending	0.50
NEB047	170	176	6	1.19	326	0.94	0.46

## Appendix 1B - Recent collar information Mt Ida from gold drilling that contained economic lithium

HoleID	DEPTH	EAST	NORTH	RL	AZIMUTH	DIP
BDG001	625	253245.2	6777940	476.865	55.12	-60.6
BDG037	801.5	252934.6	6778083	478.494	60.67	-57.47
DFS594A	330	252921.3	6778640	472.099	52.71	-57.66
DFS619	410.7	252787.4	6778688	472.788	53.19	-59.08
DFS641	624	252659.5	6778652	473.65	60.49	-56.45
DFS674A	261	253366	6778057	475.288	55.06	-56.62
DFS674B	228	253369.6	6778057	475.303	54.99	-59.68
NEB047	246	252001.6	6780282	461.504	55.1	-59.68

## Appendix 2A – Lithium Assay Results from recent Yinnetharra Regional Exploration

HoleID		From	To	Length	Li <sub>2</sub> O %	Ta <sub>2</sub> O <sub>5</sub> ppm	Fe <sub>2</sub> O <sub>3</sub> %
YREX218	NSI						
YREX219	NSI						
YREX220	NSI						
YREX221	NSI						
YREX222		7	8	1	0.35	33	5.43
YREX223	NSI						
YREX224	NSI						
YREX225	NSI						
YREX226	NSI						
YREX227	NSI						
YREX228	NSI						
YREX229	NSI						
YREX230	NSI						
YREX231		11	13	2	0.34	3	1.86
YREX232	NSI						
YREX233	NSI						
PVEX001	NSI						
PVEX002	NSI						
PVEX003	NSI						
PVEX004	NSI						
PVEX005	NSI						
PVEX006	NSI						
PVEX007	NSI						

For personal use only

## Appendix 2B – Fluorine Assay Results from recent Yinnetharra Regional Exploration

HoleID		From	To	Length	CaF <sub>2</sub> %
CGEX001		6	11	5	1.93
	and	12	15	3	4.46
CGEX002		0	4	4	0.62
	and	11	12	1	1.23
	and	15	23	8	18.17
	and	25	27	2	1.03
	and	34	35	1	2.06
	and	51	53	2	3.80
	and	60	61	1	0.62
CGEX003		0	32	32	0.78
	and	44	48	4	0.62
CGEX004		0	28	28	0.68
CGEX005	NSI				0.00
CGEX006		20	23	3	0.82
	and	48	55	7	16.36
CGEX007		34	36	2	23.12
CGEX008		40	46	6	0.62
CGEX009		0	2	2	0.62
	and	15	19	4	0.68
	and	37	41	4	0.62
CGEX010		0	3	3	0.68
CGEX011		18	34	16	0.72
CGEX012		0	4	4	0.82
	and	9	32	23	0.99
CGEX013		0	52	52	2.28
CGEX014		0	52	52	0.64
CGEX015		0	25	25	0.70

For personal use only

## Appendix 2 C - Recent collar information from exploration drilling

HOLEID	DEPTH	EAST	NORTH	RL	AZIMUTH	DIP
PVEX001	154	424266.3	7289331	320.796	91.09	-55.77
PVEX002	160	424289.3	7289335	320.901	350.94	-66.25
PVEX003	154	424402.8	7289355	319.882	269.89	-55.55
PVEX004	100	424278	7289391	320.291	348.51	-65.62
PVEX005	100	424364.5	7289436	319.477	342.47	-65.37
PVEX006	208	424378.5	7289378	320.107	345.49	-65.3
PVEX007	314	424288.1	7289431	319.909	80.19	-69.22
YREX218	154	425316	7290576	316.436	177.96	-50.53
YREX219	190	425187.2	7290437	316.583	180.29	-50.55
YREX220	118	425798.8	7290129	318.676	181.49	-50.84
YREX221	130	425766.5	7290111	318.822	93.22	-50.64
YREX222	136	426916.5	7289433	329.287	92.65	-50.14
YREX223	124	427927.5	7288873	340.726	29.97	-59.12
YREX224	118	428043.4	7288875	338.457	30.29	-54.7
YREX225	196	428103.6	7288871	338.365	29.46	-59.88
YREX226	118	428229.8	7288903	333.066	29.37	-59.71
YREX227	118	428112.3	7288943	334.383	211.8	-60.12
YREX228	100	427381.4	7289031	329.326	121.42	-50.08
YREX229	118	426708.4	7289366	326.002	91.88	-50.41
YREX230	118	426360.5	7289494	320.654	91.01	-50.22
YREX231	118	425981	7289295	325.267	91.97	-49.77
YREX232	130	425523.6	7289329	324.092	92.4	-49.77
YREX233	371	425364.3	7289564	321.051	23.94	-62.76
CGEX001	40	425192.8	7289251	326.611	90.7	-51.06
CGEX002	64	425184.5	7289207	325.494	86.08	-50.08
CGEX003	48	425195.6	7289157	323.785	87.95	-50.12
CGEX004	42	425237.6	7289420	323.772	96.05	-49.74
CGEX005	36	425232.9	7289359	326.022	92.58	-47.56
CGEX006	102	425170	7289251	326.083	122.22	-47.75
CGEX007	78	425172.8	7289155	323.177	66.39	-49.71
CGEX008	46	425299.4	7289188	326.56	90.69	-50.04
CGEX009	76	425178	7289207	325.425	86.83	-69.3
CGEX010	46	425198	7289062	322.504	86.73	-50.15
CGEX011	40	425207.7	7288942	320.037	84.87	-49.62
CGEX012	34	425434.1	7288960	326.668	89.94	-50.42
CGEX013	52	425445.7	7289032	328.194	101.68	-50.48
CGEX014	52	425482.3	7289035	329.037	106.27	-48.72
CGEX015	34	425015.4	7288359	314.848	238.3	-50.57
CGEX016	52	424956.7	7287732	313.446	238.3	-50.57
CGEX017	34	425006.2	7287552	311.116	239	-49.42

For personal use only

## Appendix 2 D– Historic and recent regional exploration fluorine assay rockchip results

SAMPLEID	GRID	TEN ID	EAST	NORTH	CaF <sub>2</sub> pct	Company	Year
CAF0066	MGA_50S	E09/2114	407783.9	7295117	86.09	Delta	2026
CAF0020	MGA_50S	E09/2169	425212.5	7289239	85.89	Delta	2025
CAF0013	MGA_50S	E09/2169	421596.5	7288347	78.49	Delta	2025
FE81	MGA_50S	E09/2169	422991.1	7287633	77.87	Parkmin	2001
CAF0054	MGA_50S	E09/2169	425478.3	7289005	75.61	Delta	2025
FE09	MGA_50S	E09/2169	422780.1	7287499	73.58	Parkmin	2001
FE42	MGA_50S	E09/2169	425292.1	7288741	71.91	Parkmin	2001
FE73	MGA_50S	E09/2169	425329.1	7289127	71.5	Parkmin	2001
FE63	MGA_50S	E09/2169	425451.1	7288973	70.89	Parkmin	2001
FW04	MGA_50S	E09/2169	421674.1	7288290	69.43	Parkmin	2001
FE68	MGA_50S	E09/2169	425298.1	7288671	69.04	Parkmin	2001
FW05	MGA_50S	E09/2169	421609.1	7288327	68.09	Parkmin	2001
FE65	MGA_50S	E09/2169	425430.1	7288921	67.19	Parkmin	2001
FE75	MGA_50S	E09/2169	422969.1	7287645	66.57	Parkmin	2001
FE21	MGA_50S	E09/2169	425404.1	7289102	63.7	Parkmin	2001
CAF0015	MGA_50S	E09/2169	421668.5	7288308	62.67	Delta	2025
CAF0023	MGA_50S	E09/2169	425235.6	7289183	62.67	Delta	2025
FE62	MGA_50S	E09/2169	425506.1	7289011	57.94	Parkmin	2001
CAF0010	MGA_50S	E09/2169	421639.3	7288322	57.53	Delta	2025
FE60	MGA_50S	E09/2169	425437.1	7288921	55.89	Parkmin	2001
FE24	MGA_50S	E09/2169	425477.1	7289013	51.37	Parkmin	2001
CAF0065	MGA_50S	E09/2114	407943.5	7295186	49.93	Delta	2026
FE25	MGA_50S	E09/2169	425500.1	7289020	49.31	Parkmin	2001
FE47	MGA_50S	E09/2169	423080.1	7287917	47.26	Parkmin	2001
CAF0024	MGA_50S	E09/2169	425178.1	7289179	46.03	Delta	2025
FE32	MGA_50S	E09/2169	425294.1	7288766	45.2	Parkmin	2001
FE64	MGA_50S	E09/2169	425465.1	7289057	43.56	Parkmin	2001
FE07	MGA_50S	E09/2169	425191.1	7289063	42.94	Parkmin	2001
FW18	MGA_50S	E09/2169	422814.1	7287830	42.94	Parkmin	2001
CAF0018	MGA_50S	E09/2169	421595.2	7288335	39.45	Delta	2025
FE61	MGA_50S	E09/2169	425454.1	7288960	39.04	Parkmin	2001
CAF0019	MGA_50S	E09/2169	425455.9	7288957	36.37	Delta	2025
FE16	MGA_50S	E09/2169	425237.1	7288701	35.34	Parkmin	2001
CAF0017	MGA_50S	E09/2169	421640.1	7288316	34.93	Delta	2025
FE23	MGA_50S	E09/2169	425443.1	7288982	34.93	Parkmin	2001
CAF0057	MGA_50S	E09/2169	425445.1	7288958	33.29	Delta	2025
123636	MGA_50S	E09/2114	407869	7295111	33.08	Mincor	2006
FE74	MGA_50S	E09/2169	425273.1	7289108	32.46	Parkmin	2001
FE67	MGA_50S	E09/2169	422939.1	7287416	31.23	Parkmin	2001
M442	MGA_50S	E09/2169	421706	7288284	28.66	Delta	2025
CAF0027	MGA_50S	E09/2169	423339	7287840	28.56	Delta	2025
CAF0047	MGA_50S	E09/2169	422700	7287554	28.56	Delta	2025
CAF0063	MGA_50S	E09/2169	425022.5	7288357	28.35	Delta	2026

FE26	MGA_50S	E09/2169	425502.1	7289005	24.66	Parkmin	2001
CAF0011	MGA_50S	E09/2169	421600	7288336	23.01	Delta	2025
123637	MGA_50S	E09/2114	407850	7295108	20.65	Mincor	2006
CAF0009	MGA_50S	E09/2169	422645.6	7287610	19.93	Delta	2025
FE69	MGA_50S	E09/2169	425255.1	7288610	19.73	Parkmin	2001
CAF0016	MGA_50S	E09/2169	421657.1	7288307	18.7	Delta	2025
CAF0074	MGA_50S	E09/2169	417725.3	7294546	17.88	Delta	2026
CAF0048	MGA_50S	E09/2169	422713	7287553	17.26	Delta	2025
CAF0064	MGA_50S	E09/2114	407782	7295020	15.62	Delta	2026
CAF0062	MGA_50S	E09/2169	425024.8	7288364	14.79	Delta	2026
CAF0075	MGA_50S	E09/2169	417713.9	7294546	12.33	Delta	2026
CAF0021	MGA_50S	E09/2169	425228.6	7289202	11.3	Delta	2025
FR4	MGA_50S	E09/2169	422911.1	7287530	9.04	Parkmin	2001
CAF0053	MGA_50S	E09/2169	425529.8	7289033	5.75	Delta	2025
FE20	MGA_50S	E09/2169	425039.1	7288354	5.55	Parkmin	2001
FE71	MGA_50S	E09/2169	425387.1	7288385	5.34	Parkmin	2001
CAF0040	MGA_50S	E09/2169	423071.4	7287915	3.9	Delta	2025
CAF0067	MGA_50S	E09/2114	407780.2	7295119	3.9	Delta	2026
CAF0076	MGA_50S	E09/2169	417717.5	7294535	3.9	Delta	2026

### Appendix 3 A - Lithium MRE group summary table

Delta Lithium Group Mineral Resource estimate (Li <sub>2</sub> O only)							
	Resource category	Cut-off grade (Li <sub>2</sub> O%)	Li <sub>2</sub> O			Ta <sub>2</sub> O <sub>5</sub>	Rb <sub>2</sub> O
			Tonnes (Mt)	Grade (% Li <sub>2</sub> O)	Li <sub>2</sub> O (Kt)	Grade (Ta <sub>2</sub> O <sub>5</sub> ppm)	Grade (Rb <sub>2</sub> O %)
Yinnetharra	Measured	0.5	-	-	-	-	-
	Indicated		16.1	1.0	158	77	-
	Inferred		5.8	0.9	54	69	-
	<b>Total Resource</b>		<b>21.9</b>	<b>1.0</b>	<b>212</b>	<b>75</b>	<b>-</b>
Mt Ida	Measured	0.3 - 0.5	0.5	1.1	5.9	256	0.39
	Indicated		7.2	1.3	96	215	0.45
	Inferred		7.1	1.1	83	126	0.38
	<b>Total Resource</b>		<b>14.8</b>	<b>1.2</b>	<b>190</b>	<b>173</b>	<b>0.42</b>
Total Measured			0.5	1.1	5.5	256	0.39
Total Indicated			23.3	1.1	254	120	-
Total Inferred			12.9	1.0	137	100	-
<b>Total</b>			<b>36.7</b>	<b>1.1</b>	<b>402</b>	<b>115</b>	<b>-</b>

## Appendix 2 B - Yinnetharra Tantalum Only MRE

Yinnetharra Tantalum Only Resource March 2025								
Area	Resource category	Cut-off grade (Ta <sub>2</sub> O <sub>5</sub> ppm)	Tonnes (Mt)	Li <sub>2</sub> O%	Li <sub>2</sub> O (Kt)	Ta <sub>2</sub> O <sub>5</sub> ppm	Ta <sub>2</sub> O <sub>5</sub> (Kt)	
MT1	Measured	65	-	-	-	-	-	
	Indicated		3.7	0.1	3	82	0.3	
	Inferred		0.6	0.0	0	94	0.1	
	<b>Total Resource</b>		<b>4.3</b>	<b>0.1</b>	<b>4</b>	<b>84</b>	<b>0.4</b>	
MT20	Measured	65	-	-	-	-	-	
	Indicated		-	-	-	-	-	
	Inferred		0.2	0.1	0	115	0.0	
	<b>Total Resource</b>		<b>0.2</b>	<b>0.1</b>	<b>0</b>	<b>115</b>	<b>0.0</b>	
MT36	Measured	65	-	-	-	-	-	
	Indicated		4.3	0.1	5	123	0.5	
	Inferred		0.6	0.1	1	106	0.1	
	<b>Total Resource</b>		<b>4.9</b>	<b>0.1</b>	<b>5</b>	<b>121</b>	<b>0.6</b>	
MT42	Measured	65	-	-	-	-	-	
	Indicated		0.3	0.2	1	175	0.1	
	Inferred		2.5	0.1	2	208	0.5	
	<b>Total Resource</b>		<b>2.8</b>	<b>0.1</b>	<b>3</b>	<b>204</b>	<b>0.6</b>	
MT47	Measured	65	-	-	-	-	-	
	Indicated		2.1	0.1	3	186	0.4	
	Inferred		0.5	0.1	0	257	0.1	
	<b>Total Resource</b>		<b>2.5</b>	<b>0.1</b>	<b>3</b>	<b>199</b>	<b>0.5</b>	
MT67	Measured	65	-	-	-	-	-	
	Indicated		-	-	-	-	-	
	Inferred		0.6	0.2	1	113	0.1	
	<b>Total Resource</b>		<b>0.6</b>	<b>0.2</b>	<b>1</b>	<b>113</b>	<b>0.1</b>	
MT69	Measured	65	-	-	-	-	-	
	Indicated		-	-	-	-	-	
	Inferred		1.6	0.1	2	105	0.2	
	<b>Total Resource</b>		<b>1.6</b>	<b>0.1</b>	<b>2</b>	<b>105</b>	<b>0.2</b>	
MT70	Measured	65	-	-	-	-	-	
	Indicated		-	-	-	-	-	
	Inferred		0.7	0.1	1	161	0.1	
	<b>Total Resource</b>		<b>0.7</b>	<b>0.1</b>	<b>1</b>	<b>161</b>	<b>0.1</b>	
Total Measured			-	-	-	-	-	
Total Indicated			10.4	0.1	12	122	1.3	
Total Inferred			7.1	0.1	7	156	1.1	
<b>Total</b>			<b>17.5</b>	<b>0.1</b>	<b>19</b>	<b>136</b>	<b>2.4</b>	

## Appendix 3 – Mount Ida JORC Tables

JORC Table 1: Section 1: Sampling Techniques and Data

Criteria	Explanation	Commentary
<b>Sampling techniques</b>	<i>Nature and quality of sampling (eg cut channels, random chips, or specific specialised industry standard measurement tools appropriate to the minerals under investigation, such as down hole gamma sondes, or handheld XRF instruments, etc). These examples should not be taken as limiting the broad meaning of sampling. Include reference to measures taken to ensure sample representivity and the appropriate calibration of any measurement tools or systems used. Aspects of the determination of mineralisation that are Material to the Public Report. In cases where 'industry standard' work has been done this would be relatively simple (eg 'reverse circulation drilling was used to obtain 1 m samples from which 3 kg was pulverised to produce a 30 g charge for fire assay'). In other cases more explanation may be required, such as where there is coarse gold that has inherent sampling problems. Unusual commodities or mineralisation types (eg submarine nodules) may warrant disclosure of detailed information</i>	<ul style="list-style-type: none"> <li>• Gold &amp; lithium sampling activities carried out by Delta Lithium and now Ballard Mining at the Mt Ida Project have included reverse circulation (RC) and diamond (DD) drilling.</li> <li>• RC samples were collected from a static cone splitter mounted directly below the cyclone on the rig, DD sampling was carried out to lithological/alteration domain with lengths between 0.3-1.1m</li> <li>• Limited historical data has been supplied, historic sampling has been carried out by Hammill Resources, International Goldfields, La Mancha Resources, Eastern Goldfields and Ora Banda Mining, and has included RC, DD and rotary air blast (RAB) drilling</li> <li>• Sampling of historic RC has been carried out via riffle split for 1m sampling, and scoop or spear sampling for 4m composites, historic RAB drilling was sampled via spear into 4m composites</li> <li>• Historic core has been cut and sampled to geological intervals</li> <li>• These methods of sampling are considered to be appropriate for this style of exploration</li> </ul>
<b>Drilling techniques</b>	<i>Drill type (eg core, reverse circulation, open-hole hammer, rotary air blast, auger, Bangka, sonic, etc) and details (eg core diameter, triple or standard tube, depth of diamond tails, face-sampling bit or other type, whether core is oriented and if so, by what method, etc).</i>	<ul style="list-style-type: none"> <li>• RC Drilling has been carried out by Orlando Drilling and Frontline Drilling, PXD, RC drilling utilised an Explorac 220RC rig, T66 Schramm RC Rig with a 143 mm face sampling hammer bit, DD drilling was completed by a truck mounted Sandvik DE820 and a KWL 1500 and is HQ2 and NQ2 diameter.</li> <li>• Diamond tails average 200-300m depth</li> <li>• Historic drilling has been completed by various companies including Kennedy Drilling, Wallis Drilling, Ausdrill and unnamed contractors</li> <li>• Historic DD drilling was NQ sized core</li> <li>• It is assumed industry standard drilling methods and equipment were utilised for all historic drilling</li> </ul>

Criteria	Explanation	Commentary
<b>Drill sample recovery</b>	<i>Method of recording and assessing core and chip sample recoveries and results assessed. Measures taken to maximise sample recovery and ensure representative nature of the samples. Whether a relationship exists between sample recovery and grade and whether sample bias may have occurred due to preferential loss/gain of fine/coarse material.</i>	<ul style="list-style-type: none"> <li>• Sample condition is recorded for every RC drill metre including noting the presence of water or minimal sample return, inspections of rigs were carried out daily</li> <li>• Recovery on diamond core is recorded by measuring the core metre by metre</li> <li>• Limited sample recovery and condition information has been supplied or found for historic drilling</li> </ul>
<b>Logging</b>	<i>Whether core and chip samples have been geologically and geotechnically logged to a level of detail to support appropriate Mineral Resource estimation, mining studies and metallurgical studies. Whether logging is qualitative or quantitative in nature. Core (or costean, channel, etc) photography. The total length and percentage of the relevant intersections logged.</i>	<ul style="list-style-type: none"> <li>• Quantitative and qualitative geological logging of drillholes adheres to company policy and includes lithology, mineralogy, alteration, veining and weathering</li> <li>• Diamond core logging records lithology, mineralogy, alteration, weathering, veining, RQD, SG and structural data</li> <li>• All RC chip trays and drill core are photographed in full</li> <li>• A complete quantitative and qualitative logging suite was supplied for historic drilling including lithology, alteration, mineralogy, veining and weathering</li> <li>• It is unknown if all historic core was oriented, limited geotechnical logging has been supplied</li> <li>• No historic core or chip photography has been supplied</li> <li>• Historic comments on logging are very useful in to verify geological details between lithologies.</li> <li>• Logging is of a level suitable to support Mineral resource estimates and subsequent mining studies</li> </ul>

For personal use only

Criteria	Explanation	Commentary
<b>Sub-sampling techniques and sample preparation</b>	<p><i>If core, whether cut or sawn and whether quarter, half or all core taken.</i></p> <p><i>If non-core, whether riffled, tube sampled, rotary split, etc and whether sampled wet or dry. For all sample types, the nature, quality and appropriateness of the sample preparation technique.</i></p> <p><i>Quality control procedures adopted for all sub-sampling stages to maximise representivity of samples.</i></p> <p><i>Measures taken to ensure that the sampling is representative of the in situ material collected, including for instance results for field duplicate/second-half sampling. Whether sample sizes are appropriate to the grain size of the material being sampled.</i></p>	<ul style="list-style-type: none"> <li>• DD sampling is undertaken by lithological/alteration domain to a maximum of 1.1m and a minimum of 0.3m. Core is cut in half with one half sent to the lab and one half retained in the core tray</li> <li>• Occasional wet RC samples were encountered, extra cleaning of the splitter was carried out afterward</li> <li>• Should over 6 samples in a row be wet, the hole will be abandoned if it is aimed to be used in a MRE, with the intention of Diamond tailing it to retain sample quality.</li> <li>• RC and DD samples have been analysed for Au by 50g fire assay by ALS, Nagrom, NAL and SGS, and via photon assay by ALS</li> <li>• Samples analysed by via fire assay at ALS, Nagrom, NAL and SGS were dried, crushed and pulverised to 80% passing 75 microns before undergoing a selected peroxide fusion digest or 4 acid digest with ICPMS finish or fire assay with ICPMS finish</li> <li>• Samples analysed via photon assay at ALS are dried and crushed to 3mm with 500g of material utilised for the analysis.</li> <li>• The recent system in place has been to conduct Photon assaying and then 4-acid digest to determine Gold and other analytes, then all pegmatite interval pulps are re-submitted for lithium analysis via peroxide fusion.</li> <li>• RC duplicate field samples were carried out at a rate of 1:20 and were sampled directly from the splitter on the rig. These were submitted for the same assay process as the primary samples and the laboratory are unaware of such submissions</li> <li>• Historic chip sampling methods include single metre riffle split and 4m composites that were either scoop or spear sampled, while historic core was cut onsite and half core sampled</li> <li>• Historic samples were analysed at LLAS, Genalysis and unspecified laboratories</li> <li>• Historic Au analysis techniques generally included crushing, splitting if required, and pulverisation, with aqua regia or fire assay with AAS finish used to determine concentration</li> </ul>
<b>Quality of assay data and laboratory tests</b>	<p><i>The nature, quality and appropriateness of the assaying and laboratory procedures used and whether the technique is considered partial or total. Nature of quality control procedures adopted (eg standards, blanks, duplicates, external laboratory checks) and whether acceptable levels of accuracy (ie lack of bias) and precision have been established. For geophysical tools, spectrometers, handheld XRF instruments, etc, the parameters used in determining the analysis including instrument make and model, reading times, calibrations factors applied and their derivation, etc.</i></p>	<ul style="list-style-type: none"> <li>• Samples have been analysed by external laboratories utilising industry standard methods</li> <li>• The assay methods utilised by ALS, Nagrom, NAL and SGS for RC chip and core sampling allow for total dissolution of the sample where required</li> <li>• Photon assay is a non-destructive total analysis technique</li> <li>• Standards and blanks are inserted at a rate of 1 in 20 in RC and DD sampling, All QAQC analyses were within tolerance</li> <li>• QAQC reviews are completed on a monthly basis with any fails being investigated thoroughly in conjunction with the lab.</li> <li>• All historic samples are assumed to have been prepared and assayed by industry standard techniques and methods</li> <li>• Limited historic QAQC data has been supplied, industry standard best practice is assumed</li> </ul>

Criteria	Explanation	Commentary
<b>Verification of sampling and assaying</b>	<i>The verification of significant intersections by either independent or alternative company personnel. The use of twinned holes. Documentation of primary data, data entry procedures, data verification, data storage (physical and electronic) protocols. Discuss any adjustment to assay data</i>	<ul style="list-style-type: none"> <li>Significant intercepts have been reviewed by senior personnel</li> <li>No specific twinned holes have been completed, but drilling has verified historic drilling intervals</li> <li>Primary data is collected via excel templates and third-party logging software with inbuilt validation functions, the data is forwarded to the Database administrator for entry into a secure SQL database. Historic data was supplied in various formats and has been validated as much as practicable</li> <li>No adjustments to assay data have been made</li> <li>Data entry, verification and storage protocols remain unknown for historic operators</li> </ul>
<b>Location of data points</b>	<i>Accuracy and quality of surveys used to locate drill holes (collar and down-hole surveys), trenches, mine workings and other locations used in Mineral Resource estimation. Specification of the grid system used. Quality and adequacy of topographic control</i>	<ul style="list-style-type: none"> <li>MGA94 zone 51 grid coordinate system is used</li> <li>Current drilling collars have been pegged using a handheld GPS unit, all collars will be surveyed upon program completion by an independent third party</li> <li>Downhole surveys are completed by the drilling contractors using a true north seeking gyro instrument, AC drillholes did not have downhole surveys carried out</li> <li>Topography has been surveyed by recent operators. Collar elevations are consistent with surrounding holes and the natural surface elevation</li> <li>Historic collars are recorded as being picked up by DGPS, GPS or unknown methods and utilised the MGA94 zone 51 coordinate system</li> <li>Historic downhole surveys were completed by north seeking gyro, Eastman single shot and multi shot downhole camera</li> </ul>
<b>Data spacing and distribution</b>	<i>Data spacing for reporting of Exploration Results. Whether the data spacing and distribution is sufficient to establish the degree of geological and grade continuity appropriate for the Mineral Resource and Ore Reserve estimation procedure(s) and classifications applied. Whether sample compositing has been applied.</i>	<ul style="list-style-type: none"> <li>Drill hole spacing is variable throughout the program area</li> <li>Spacing is considered appropriate for this style of exploration</li> <li>Sample compositing has not been applied</li> </ul>
<b>Orientation of data in relation to geological structure</b>	<i>Whether the orientation of sampling achieves unbiased sampling of possible structures and the extent to which this is known, considering the deposit type. If the relationship between the drilling orientation and the orientation of key mineralised structures is considered to have introduced a sampling bias, this should be assessed and reported if material</i>	<ul style="list-style-type: none"> <li>Drill holes are orientated perpendicular to the regional trend of the mineralisation previously drilled at the project; drill hole orientation is not considered to have introduced any bias to sampling techniques utilised</li> <li>Some drillholes previously targeting lithium mineralisation was not optimal for the Gold but this has been taken into account for modelling and statistics.</li> </ul>
<b>Sample security</b>	The measures taken to ensure sample security	<ul style="list-style-type: none"> <li>Samples are prepared onsite under supervision of Delta and now Ballard staff and transported by a third party directly to the laboratory</li> <li>Historic sample security measures are unknown</li> </ul>
<b>Audits or reviews</b>	The results of any audits or reviews of sampling techniques and data.	<ul style="list-style-type: none"> <li>None carried out</li> </ul>

JORC Table 1; Section 2: Reporting of Exploration Results – Mount Ida

Criteria	Explanation	Commentary
<b>Mineral tenement and land tenure status</b>	<i>Type, reference name/number, location and ownership including agreements or material issues with third parties such as joint ventures, partnerships, overriding royalties, native title interests, historical sites, wilderness or national park and environmental settings. The security of the tenure held at the time of reporting along with any known impediments to obtaining a licence to operate in the area</i>	<ul style="list-style-type: none"> <li>• Drilling and sampling activities from this announcement have been carried on M29/2 &amp; M29/165 in this announcement</li> <li>• The tenements are in good standing</li> <li>• There are no heritage issues</li> </ul>
<b>Exploration done by other parties</b>	<i>Acknowledgment and appraisal of exploration by other parties.</i>	<ul style="list-style-type: none"> <li>• The area has a long history of gold and base metals exploration and mining, with gold being discovered in the district in the 1890s. Numerous generations of exploration and mining have been completed including activities such as drilling, geophysics and geochemical sampling throughout the tenure</li> </ul>
<b>Geology</b>	<i>Deposit type, geological setting and style of mineralisation.</i>	<ul style="list-style-type: none"> <li>• The Mt Ida project is located within the Eastern Goldfields region of Western Australia within the Mt Ida/Ularring greenstone belt</li> <li>• Locally the Kurradjong Antiform dominates the regional structure at Mount Ida, a south-southeast trending, tight isoclinal fold that plunges at a low angle to the south. The Antiform is comprised of a layered greenstone sequence of mafic and ultramafic rocks</li> <li>• Late stage granitoids and pegmatites intrude the sequence</li> <li>• These later stage pegmatites intrude through the pre-existing Gold lodes and other stratigraphy.</li> <li>• The intrusion of this Granitoid resulted in the greenstone sequence being overturned with the Western sequence dipping to the West and the Eastern limb dipping to the East.</li> <li>• The Mt Ida Project has a structural complex history with a number of deformational events.</li> </ul>
<b>Drill hole Information</b>	<i>A summary of all information material to the understanding of the exploration results including a tabulation of the following information for all Material drill holes: easting and northing of the drill hole collar elevation or RL (Reduced Level – elevation above sea level in metres) of the drill hole collar dip and azimuth of the hole down hole length and interception depth hole length. If the exclusion of this information is justified on the basis that the information is not Material and this exclusion does not detract from the understanding of the report, the Competent Person should clearly explain why this is the case.</i>	<ul style="list-style-type: none"> <li>• A list of the recent and historical drill hole coordinates, orientations and metrics are provided in Appendix 1</li> </ul>
<b>Data aggregation methods</b>	<i>In reporting Exploration Results, weighting averaging techniques, maximum and/or minimum grade truncations (eg cutting of high grades) and cut-off grades are usually Material and should be stated. Where aggregate intercepts incorporate short lengths of high grade results and longer lengths of low grade results, the procedure used for such aggregation should be stated and some typical examples of such aggregations should be shown in detail. The assumptions used for any reporting of metal equivalent values should be clearly stated.</i>	<ul style="list-style-type: none"> <li>• No metal equivalents are used</li> <li>• Significant intercepts are calculated with a cut-off grade of 0.3% Li<sub>2</sub>O</li> <li>• Rb ppm is converted to Rb<sub>2</sub>O by the below equation; - Rb ppm * 1.0936 / 10,000</li> </ul>
<b>Relationship between mineralisation widths and intercept lengths</b>	<i>These relationships are particularly important in the reporting of Exploration Results. If the geometry of the mineralisation with respect to the drill hole angle is known, its nature should be reported. If it is not known and only the down hole lengths are reported, there should be a clear statement to this effect (eg 'down</i>	<ul style="list-style-type: none"> <li>• The geometry of the mineralisation is oblique in this announcement</li> <li>• This drilling was gold focused which is trending NNW while the stated intercepts are referring to the Lithium pegmatites which are trending NWW</li> </ul>

Criteria	Explanation	Commentary
	<i>hole length, true width not known').</i>	
<b>Diagrams</b>	<i>Appropriate maps and sections (with scales) and tabulations of intercepts should be included for any significant discovery being reported. These should include, but not be limited to a plan view of drill hole collar locations and appropriate sectional views.</i>	<ul style="list-style-type: none"> <li>Figures are included in the announcement.</li> </ul>
<b>Balanced reporting</b>	<i>Where comprehensive reporting of all Exploration Results is not practicable, representative reporting of both low and high grades and/or widths should be practiced to avoid misleading reporting of Exploration Results.</i>	<ul style="list-style-type: none"> <li>All new or unreported drill collars, and significant intercepts have been reported in Appendix 1</li> <li>These collars have been reported via Ballard Mining's ASX announcements but did not refer to the contained lithium.</li> </ul>
<b>Other substantive exploration data</b>	<i>Other exploration data, if meaningful and material, should be reported including (but not limited to): geological observations; geophysical survey results; geochemical survey results; bulk samples – size and method of treatment; metallurgical test results; bulk density, groundwater, geotechnical and rock characteristics; potential deleterious or contaminating substances.</i>	<ul style="list-style-type: none"> <li>Extensive metallurgical test programs have been completed with results being reported to the ASX previously.</li> <li>Downstream processing programs are in progress focusing on the Mica concentrate</li> <li>Downstream flow sheets are being developed to generate a Lithium Carbonate (Li<sub>2</sub>CO<sub>3</sub>), rubidium carbonate (Rb<sub>2</sub>CO<sub>3</sub>) and Potassium Sulphate (K<sub>2</sub>SO<sub>4</sub>)</li> <li>To date, a 99.8% Li<sub>2</sub>Co<sub>3</sub> pure saleable product has been generated while the rubidium flowsheet is still in progress</li> <li>Strategic Metallurgy are completing this work.</li> <li>Two phases of Geotechnical analysis have been completed for both OP and UG mining methods for gold and lithium.</li> </ul>
<b>Further work</b>	<i>The nature and scale of planned further work (eg tests for lateral extensions or depth extensions or large-scale step-out drilling). Diagrams clearly highlighting the areas of possible extensions, including the main geological interpretations and future drilling areas, provided this information is not commercially sensitive.</i>	<ul style="list-style-type: none"> <li>Drilling is continuing at Mt Ida with an RC rig commencing infill on Au lodes via Ballard mining after Delta Lithium spun out its Gold assets via an IPO on the ASX 14<sup>th</sup> July 2025</li> </ul>

For personal use only

## Appendix 4 – Yinnetharra JORC Tables

JORC Code, 2012 Edition

Table 1; Section 1: Sampling Techniques and Data Yinnetharra – (Exploration & Metallurgical)

Criteria	Explanation	Commentary
<b>Sampling techniques</b>	Nature and quality of sampling (e.g. cut channels, random chips, or specific specialised industry standard measurement tools appropriate to the minerals under investigation, such as down hole gamma sondes, or handheld XRF instruments, etc). These examples should not be taken as limiting the broad meaning of sampling. Include reference to measures taken to ensure sample representivity and the appropriate calibration of any measurement tools or systems used. Aspects of the determination of mineralisation that are Material to the Public Report. In cases where 'industry standard' work has been done this would be relatively simple (e.g. 'reverse circulation drilling was used to obtain 1 m samples from which 3 kg was pulverised to produce a 30 g charge for fire assay'). In other cases more explanation may be required, such as where there is coarse gold that has inherent sampling problems. Unusual commodities or mineralisation types (e.g. submarine nodules) may warrant disclosure of detailed information	<ul style="list-style-type: none"> <li>• Diamond (DD) and reverse circulation (RC) drilling has been carried out by Delta Lithium at the Yinnetharra project, encompassing the Malinda and Jameson prospects</li> <li>• RC samples are collected from a static cone splitter mounted directly below the cyclone on the rig</li> <li>• DD sampling is carried out to lithological/alteration domains with lengths between 0.3-1.1m</li> <li>• Limited historic data has been supplied, reverse circulation (RC) drilling and semi-quantative XRD analysis have been completed at the project. Historic drilling referenced has been carried out by Segue Resources and Electrostate</li> <li>• Historic sampling of RC drilling has been carried out via a static cone splitter mounted beneath a cyclone return system to produce a representative sample, or via scoop</li> <li>• These methods of sampling are considered to be appropriate for this style of exploration</li> </ul>
<b>Drilling techniques</b>	Drill type (e.g. core, reverse circulation, open-hole hammer, rotary air blast, auger, Bangka, sonic, etc) and details (e.g. core diameter, triple or standard tube, depth of diamond tails, face-sampling bit or other type, whether core is oriented and if so, by what method, etc).	<ul style="list-style-type: none"> <li>• Diamond drilling has been carried out by Frontline Drilling utilising a Sandvik DE880 truck mounted multipurpose rig and is HQ or NQ diameter, or PQ for metallurgical drilling.</li> <li>• Other dedicated metallurgy holes were drilled perpendicular mainly utilising HQ2 core which was then half cored.</li> <li>• RC drilling has carried out by Frontline Drilling using a Schramm 850 rig.</li> <li>• Current RC drilling is being carried out using a track mounted Schramm rig by Strike Drilling</li> <li>• Some RC precollars have been completed, diamond tails average up to 225m depth</li> <li>• Historic RC drilling was completed using a T450 drill rig with external booster and auxiliary air unit, or unspecified methods utilising a 133mm face sampling bit</li> <li>• It is assumed industry standard drilling methods and equipment were utilised for all drilling</li> </ul>
<b>Drill sample recovery</b>	Method of recording and assessing core and chip sample recoveries and results assessed. Measures taken to maximise sample recovery and ensure representative nature of the samples. Whether a relationship exists between sample recovery and grade and whether sample bias may have occurred due to preferential loss/gain of fine/coarse material.	<ul style="list-style-type: none"> <li>• Sample condition is recorded for every RC drill metre including noting the presence of water or minimal sample return, inspections of rigs are carried out daily</li> <li>• Recovery on diamond core is recorded by measuring the core metre by metre</li> <li>• Poor recoveries were occasionally encountered in near surface drilling of the pegmatite due to the weathered nature</li> <li>• Historic RC recoveries were visually estimated on the rig, bulk reject sample from the splitter was retained on site in green bags for use in weighing and calculating drill recoveries at a later date if required</li> <li>• Sample weights were recorded by the laboratory</li> </ul>

Criteria	Explanation	Commentary
<b>Logging</b>	Whether core and chip samples have been geologically and geotechnically logged to a level of detail to support appropriate Mineral Resource estimation, mining studies and metallurgical studies. Whether logging is qualitative or quantitative in nature. Core (or costean, channel, etc) photography. The total length and percentage of the relevant intersections logged.	<ul style="list-style-type: none"> <li>Quantitative and qualitative geological logging of drillholes adheres to company policy and includes lithology, mineralogy, alteration, veining and weathering</li> <li>Diamond core (including metallurgical core) and RC chip logging records lithology, mineralogy, alteration, weathering, veining, RQD, SG and structural data</li> <li>All diamond drillholes and RC chip trays are photographed in full</li> <li>A complete quantitative and qualitative logging suite was supplied for historic drilling including lithology, alteration, mineralogy, veining and weathering</li> <li>Additional TIMA analysis was completed on pulps and core to log mineralogical abundances throughout selected samples.</li> <li>No historic chip photography has been supplied</li> <li>Logging is of a level suitable to support Mineral resource estimates and subsequent mining studies</li> </ul>
<b>Sub-sampling techniques and sample preparation</b>	If core, whether cut or sawn and whether quarter, half or all core taken. If non-core, whether riffled, tube sampled, rotary split, etc and whether sampled wet or dry. For all sample types, the nature, quality and appropriateness of the sample preparation technique. Quality control procedures adopted for all sub-sampling stages to maximise representivity of samples. Measures taken to ensure that the sampling is representative of the in situ material collected, including for instance results for field duplicate/second-half sampling. Whether sample sizes are appropriate to the grain size of the material being sampled.	<ul style="list-style-type: none"> <li>DD sampling is undertaken by lithological/alteration domain to a maximum of 1.1m and a minimum of 0.3m. Core is cut in half with one half sent to the lab and one half retained in the core tray. Metallurgical drilling was often quarter core sampled to retain maximum material for testwork</li> <li>Occasional wet RC samples are encountered, extra cleaning of the splitter is carried out afterward</li> <li>RC and core samples have been analysed for Li suite elements by ALS Laboratories, Samples are crushed and pulverised to 85% passing 75 microns for peroxide fusion digest followed by ICPOES or ICPMS determination</li> <li>Historic RC sampling methods included single metre static cone split from the rig or via scoop from the green bags, field duplicates were inserted at a rate of 1:20 within the pegmatite zones</li> <li>Historic samples were recorded as being mostly dry</li> <li>Historic samples were analysed by Nagrom or ALS Laboratories where 3kg samples were crushed and pulverised to 85% passing 75 microns for a sodium peroxide fusion followed by ICP-MS determination for 25 elements.</li> <li>Samples analysed for Fluorine are crushed, pulverised then scanned via ME-XRF24 to determine absolute fluorine values.</li> <li>Fusion decomposition, with XRF Measurement uses 0.7 g sample</li> <li>Semi-Quantitative XRD analysis was carried out by Microanalysis Australia using a representative sub-sample that was lightly ground such that 90% was passing 20 µm to eliminate preferred orientation</li> </ul>

Criteria	Explanation	Commentary
<b>Quality of assay data and laboratory tests</b>	The nature, quality and appropriateness of the assaying and laboratory procedures used and whether the technique is considered partial or total. Nature of quality control procedures adopted (e.g. standards, blanks, duplicates, external laboratory checks) and whether acceptable levels of accuracy (i.e. lack of bias) and precision have been established. For geophysical tools, spectrometers, handheld XRF instruments, etc, the parameters used in determining the analysis including instrument make and model, reading times, calibrations factors applied and their derivation, etc.	<ul style="list-style-type: none"> <li>• Samples have been analysed by an external laboratory utilising industry standard methods</li> <li>• The assay method utilised by ALS for core sampling allows for total dissolution of the sample where required</li> <li>• Standards and blanks are inserted at a rate of 1 in 20 in RC and DD sampling, all QAQC analyses were within tolerance</li> <li>• Duplicate samples are inserted at a rate of 1:20 in RC sampling, with the frequency increasing in ore zones</li> <li>• The sodium peroxide fusion used for historic assaying is a total digest method</li> <li>• All historic samples are assumed to have been prepared and assayed by industry standard techniques and methods</li> <li>• In the historic data field duplicates, certified reference materials (CRMs) and blanks were inserted into the sampling sequence at a rate of 1:20 within the pegmatite zone</li> <li>• Internal standards, duplicates and repeats were carried out by Nagrom and ALS as part of the assay process</li> <li>• No standards were used in the XRD process</li> </ul> <p><b>Metallurgical Sample assaying:</b></p> <ul style="list-style-type: none"> <li>• Metallurgical samples were analysed at Nagrom Laboratory, Kelmscott, Western Australia.</li> <li>• Li, Rb, U and Th were measured by ICP which is considered industry standard for lithium analysis. All other analytes were measured by XRF.</li> <li>• ICP samples were prepared by sodium peroxide fusion and acid digestion. QA/QC controls included periodic blanks, and duplicates; and inclusion of lithium standards with every submission.</li> <li>• XRF samples were prepared by fusion with lithium borate flux and lithium nitrate additive to form a bead which was analysed by XRF.</li> </ul>
<b>Verification of sampling and assaying</b>	The verification of significant intersections by either independent or alternative company personnel. The use of twinned holes. Documentation of primary data, data entry procedures, data verification, data storage (physical and electronic) protocols. Discuss any adjustment to assay data	<ul style="list-style-type: none"> <li>• Significant intercepts have been reviewed by senior personnel</li> <li>• Some holes in the current diamond program have been designed to twin historic RC drillholes and verify mineralised intercepts</li> <li>• Primary data is collected via excel templates and third-party logging software with inbuilt validation functions, the data is forwarded to the Database administrator for entry into a secure SQL database</li> <li>• Historic data was recorded in logbooks or spreadsheets before transfer into a geological database</li> <li>• No adjustments to assay data have been made other than conversion from Li to Li<sub>2</sub>O and Ta to Ta<sub>2</sub>O<sub>5</sub></li> <li>• Rb has also been converted to Rb<sub>2</sub>O which entails a conversion factor of 1.0936</li> <li>• To convert elemental fluorine (F) content to fluorite equivalent (CaF<sub>2</sub>), use the molecular weight relationship between fluorine and calcium fluoride.</li> <li>• CaF<sub>2</sub> is calculated by multiplying FI values by 2.055</li> </ul>

Criteria	Explanation	Commentary
<b>Location of data points</b>	Accuracy and quality of surveys used to locate drill holes (collar and down-hole surveys), trenches, mine workings and other locations used in Mineral Resource estimation. Specification of the grid system used. Quality and adequacy of topographic control	<ul style="list-style-type: none"> <li>• Drill collars are located using a handheld GPS unit, post-drilling, all holes are surveyed by trained Delta personnel using a Trimble DGPS.</li> <li>• GDA94 MGA zone 50 grid coordinate system was used</li> <li>• Downhole surveys were completed by DDH1, PXD, Orlando or Frontline using a multishot tool or north seeking gyro</li> <li>• Historic collars were located using handheld Garmin GPS unit with +/- 5m accuracy</li> <li>• Historic holes were not downhole surveyed, planned collar surveys were provided</li> </ul>
<b>Data spacing and distribution</b>	Data spacing for reporting of Exploration Results. Whether the data spacing and distribution is sufficient to establish the degree of geological and grade continuity appropriate for the Mineral Resource and Ore Reserve estimation procedure(s) and classifications applied. Whether sample compositing has been applied.	<ul style="list-style-type: none"> <li>• Drill hole spacing is variable throughout the program area</li> <li>• Spacing is considered appropriate for this style of exploration</li> <li>• Sample compositing has not been applied</li> <li>• Metallurgical drilling was completed within modelled geometallurgical domains which are spatially located throughout the orebody to capture any possible variability</li> </ul>
<b>Orientation of data in relation to geological structure</b>	Whether the orientation of sampling achieves unbiased sampling of possible structures and the extent to which this is known, considering the deposit type. If the relationship between the drilling orientation and the orientation of key mineralised structures is considered to have introduced a sampling bias, this should be assessed and reported if material	<ul style="list-style-type: none"> <li>• Exploration drill holes were orientated to intersect the pegmatite zones as close to perpendicular as possible; drill hole orientation is not considered to have introduced any bias to sampling techniques utilised as true orientation of the pegmatites is yet to be determined</li> <li>• Current and upcoming programs will be drilled at various orientations in order to confirm geometry of pegmatites at regional prospects</li> </ul>
<b>Sample security</b>	The measures taken to ensure sample security	<ul style="list-style-type: none"> <li>• Samples are prepared onsite under supervision of Delta Lithium staff and transported by a third party directly to the laboratory</li> <li>• Historic samples were collected, stored, and delivered to the laboratory by company personnel</li> <li>• Samples are secured in a monitored compound when awaiting mark up and testing at Nagrom laboratories</li> </ul>
<b>Audits or reviews</b>	The results of any audits or reviews of sampling techniques and data.	<ul style="list-style-type: none"> <li>• Snowden Optiro conducted as site visit in 2023 to review and audit sampling and QAQC protocol.</li> <li>• All metallurgical results and assays were peer reviewed internally by Nagrom prior to finalising.</li> </ul>

JORC Table 2; Section 2: Reporting of Exploration Results, Yinnetharra

Criteria	Explanation	Commentary
<b>Mineral tenement and land tenure status</b>	Type, reference name/number, location and ownership including agreements or material issues with third parties such as joint ventures, partnerships, overriding royalties, native title interests, historical sites, wilderness or national park and environmental settings. The security of the tenure held at the time of reporting along with any known impediments to obtaining a licence to operate in the area	<ul style="list-style-type: none"> <li>• Drilling and sampling activities have been carried on E09/2169 (Malinda), E09/2621 (Jamesons), E09/2388 (Caribou)</li> <li>• The tenements are in good standing</li> <li>• There are no heritage issues, identified sites have been demarcated and DLI has coordinated with the traditional owners</li> </ul>
<b>Exploration done by other parties</b>	Acknowledgment and appraisal of exploration by other parties.	<ul style="list-style-type: none"> <li>• The area has a long history of multi commodity exploration including base and precious metals, industrial minerals and gemstones stretching back to the 1970s, activities carried out have included geophysics and geochemical sampling, and some drilling</li> <li>• Targeted Li exploration was carried out in 2017 by Segue Resources with follow up drilling completed by Electrostate in July 2022</li> </ul>
<b>Geology</b>	Deposit type, geological setting and style of mineralisation.	<ul style="list-style-type: none"> <li>• The project lies within the heart of the Proterozoic Gascoyne Province, positioned more broadly within the Capricorn Orogen — a major zone of tectonism formed between the Archean Yilgarn and Pilbara cratons. The Gascoyne Province has itself been divided into several zones each characterised by a distinctive and episodic history of deformation, metamorphism, and granitic magmatism. The project sits along the northern edge of the Mutherbukin zone, along the Ti Tree Syncline. Mutherbukin is dominated by the Thirty-Three supersuite — a belt of plutons comprised primarily of foliated metamonzogranite, monzogranite and granodiorite. Rare-earth pegmatites have been identified and mined on small scales</li> </ul>
<b>Drill hole Information</b>	A summary of all information material to the understanding of the exploration results including a tabulation of the following information for all Material drill holes: easting and northing of the drill hole collar elevation or RL (Reduced Level – elevation above sea level in metres) of the drill hole collar dip and azimuth of the hole down hole length and interception depth hole length. If the exclusion of this information is justified on the basis that the information is not Material and this exclusion does not detract from the understanding of the report, the Competent Person should clearly explain why this is the case.	<ul style="list-style-type: none"> <li>• A list of the drill hole coordinates, orientations and metrics are provided as an appended table</li> </ul>
<b>Data aggregation methods</b>	In reporting Exploration Results, weighting averaging techniques, maximum and/or minimum grade truncations (e.g., cutting of high grades) and cut-off grades are usually Material and should be stated. Where aggregate intercepts incorporate short lengths of high grade results and longer lengths of low grade results, the procedure used for such aggregation should be stated and some typical examples of such aggregations should be shown in detail. The assumptions used for any reporting of metal equivalent values should be clearly stated.	<ul style="list-style-type: none"> <li>• No metal equivalents are used</li> <li>• Significant intercepts are calculated with a cut-off grade of 0.5% Li<sub>2</sub>O</li> <li>• To convert elemental fluorine (F) content to fluorite equivalent (CaF<sub>2</sub>), the molecular weight relationship between fluorine and calcium fluoride was used.</li> <li>• CaF<sub>2</sub> is calculated by multiplying FI values by 2.055</li> </ul>
<b>Relationship between mineralisation widths and intercept lengths</b>	These relationships are particularly important in the reporting of Exploration Results. If the geometry of the mineralisation with respect to the drill hole angle is known, its nature should be reported. If it is not known and only the down hole lengths are reported, there should be a clear statement to this effect (e.g. 'down hole length, true width not known').	<ul style="list-style-type: none"> <li>• The pegmatites are interpreted as dipping moderately to steeply toward the south at Malinda</li> <li>• Pegmatites at Jamesons have an unknown orientation</li> <li>• Further drilling is required to confirm the true orientation of the pegmatites across multiple lines</li> </ul>

Criteria	Explanation	Commentary
<b>Diagrams</b>	Appropriate maps and sections (with scales) and tabulations of intercepts should be included for any significant discovery being reported. These should include, but not be limited to a plan view of drill hole collar locations and appropriate sectional views.	<ul style="list-style-type: none"> <li>Figures are included in the announcement.</li> </ul>
<b>Balanced reporting</b>	Where comprehensive reporting of all Exploration Results is not practicable, representative reporting of both low and high grades and/or widths should be practiced to avoid misleading reporting of Exploration Results.	<ul style="list-style-type: none"> <li>All drill collars, and significant intercepts have been reported in the appendix</li> </ul>
<b>Other substantive exploration data</b>	Other exploration data, if meaningful and material, should be reported including (but not limited to): geological observations; geophysical survey results; geochemical survey results; bulk samples – size and method of treatment; metallurgical test results; bulk density, groundwater, geotechnical and rock characteristics; potential deleterious or contaminating substances.	<ul style="list-style-type: none"> <li>Metallurgical testwork from Malinda indicates the potential for high grade, high recovery, low impurity spodumene concentrates.</li> </ul>
<b>Further work</b>	The nature and scale of planned further work (e.g. tests for lateral extensions or depth extensions or large-scale step-out drilling). Diagrams clearly highlighting the areas of possible extensions, including the main geological interpretations and future drilling areas, provided this information is not commercially sensitive.	<ul style="list-style-type: none"> <li>One drill rig is currently conducting a regional exploration program targeting a number of regional prospects</li> </ul>