



**Pantoro  
Gold**

**ASX:PNR**

**Europe Roadshow and Canaccord USA Conference  
May 2026**

personal use only

# Important Notes

**Nature of Document.** This presentation has been prepared and issued by Pantoro Limited (Pantoro or Company) to provide general information about Pantoro.

**Summary Information.** The information in this document is in summary form and should not be relied upon as a complete and accurate representation of any matters that a reader should consider in evaluating Pantoro. While management has taken every effort to ensure the accuracy of the material in this presentation, Pantoro and its advisers have not verified the accuracy or completeness of the material contained in this presentation.

**Not an offer.** This presentation and its contents are not an invitation, offer, solicitation or recommendation with respect to the purchase or sale of any securities in Pantoro in any jurisdiction and must not be distributed, transmitted, or viewed by any person in any jurisdiction where the distribution, transmission or viewing of this document would be unlawful under the securities or other laws of that or any other jurisdiction. This presentation is not a prospectus or any other offering document under Australian law (and will not be lodged with the Australian Securities and Investments Commission) or any other law.

**Not financial product advice.** Neither Pantoro nor any of its related bodies corporate is licensed to provide financial product advice in respect of Pantoro's securities or any other financial products. You should not act and refrain from acting in reliance on this presentation. Nothing contained in this presentation constitutes investment, legal, tax or other advice. This presentation does not take into account the individual investment objectives, financial situation and particular needs of Pantoro shareholders. Before making a decision to invest in Pantoro at any time, you should conduct, with the assistance of your broker or other financial or professional adviser, your own investigation in light of your particular investment needs, objectives and financial circumstances and perform your own analysis of Pantoro before making any investment decision.

**Disclaimer.** No representation or warranty, express or implied, is made by Pantoro that the material contained in this presentation will be achieved or proved correct. Except for statutory liability which cannot be excluded, each of Pantoro, its directors, officers, employees, advisors and agents expressly disclaims any responsibility for the accuracy, fairness, sufficiency or completeness of the material contained in this presentation and excludes all liability whatsoever (including in negligence) for any loss or damage which may be suffered by any person as a consequence of any information in this presentation or any effort or omission therefrom. Pantoro will not update or keep current the information contained in this presentation or to correct any inaccuracy or omission which may become apparent, or to furnish any person with any further information. Any opinions expressed in the presentation are subject to change without notice.

Unless required by law or regulation (including the ASX Listing Rules), Pantoro and their respective directors, officers, employees, advisers, agents and other intermediaries disclaim any obligation or undertaking to provide any additional or updated information, whether as a result of new information, future events or results or otherwise (including to reflect any change in expectations or assumptions).

Nothing in this presentation will, under any circumstances (including by reason of this presentation remaining available and not being superseded or replaced by any other presentation or publication with respect to Pantoro or the subject matter of this presentation), create an implication that there has been no change in the affairs of Pantoro since the date of this presentation.

**Forward Looking Statements and future performance** This presentation contains forward looking statements about Pantoro. Often, but not always, forward looking statements can be identified by the use of forward looking words such as "may", "will", "expect", "intend", "plan", "estimate", "anticipate", "continue", and "guidance", or other similar words and may include, without limitation, statements in this presentation regarding intent, belief, expectations, plans, strategies and objectives of management, indications of and guidance on synergies, future earnings or financial position or performance, future acquisitions, anticipated production or construction commencement dates, costs or production outputs for Pantoro (based on, among other things, respective estimates of production for the periods specifically referred to in this presentation), and the future operation of Pantoro. Pantoro does not make any representation or warranty as to the currency, accuracy, reliability or completeness of any forward looking statements contained in this presentation.

To the extent that this presentation contains forward looking information, the forward looking information is subject to a number of risks, including those generally associated with the gold industry and the mining industry more broadly. Any such forward looking statement inherently involves known and unknown risks, uncertainties and other factors that may cause actual results, performance and achievements to be materially greater or less than estimated. These may include, but are not limited to, changes in commodity prices, foreign exchange fluctuations and general economic conditions, increased costs and demand for production inputs, the speculative nature of exploration and project development (including the risks of obtaining necessary licenses and permits and diminishing quantities or grades of reserves), political and social risks, changes to the regulatory framework within which Pantoro operates or may in the future operate, environmental conditions including extreme weather conditions, geological and geotechnical events, and other environmental issues, the recruitment and retention of key personnel, industrial relations issues, litigation and outbreaks of disease or pandemics (including the continuation or escalation of the global COVID-19 pandemic). Any such forward looking statements are based on assumptions, qualifications and contingencies which are subject to change and which may ultimately prove to be materially incorrect, as are statements about market and industry trends, which are based on interpretations of current market conditions. Investors should consider any forward looking statements contained in this presentation in light of such matters (and their inherent uncertainty) and not place reliance on such statements. Forward looking statements are not guarantees or predictions of future performance and may involve significant elements of subjective judgment, assumptions as to future events that may not be correct, known and unknown risks, uncertainties and other factors, many of which are outside the control of Pantoro. Any forward looking statements are based on information available to Pantoro as at the date of this presentation. Except as

# Important Notes (Continued)

Past performance. Past performance metrics and figures (including past share price performance of Pantoro), as well as pro forma financial information, included in this presentation are given for illustrative purposes only and should not be relied upon as (and is not) an indication of Pantoro's, or any other party's views on Pantoro's future financial performance or condition or prospects. Investors should also note that the pro forma historical financial information is for illustrative purpose only. Investors should note that past performance of Pantoro, including in relation to the historical trading price of Pantoro shares, production, mineral resources and ore reserves, costs and other historical financial information cannot be relied upon as an indicator of (and provides no guidance, assurance or guarantee as to) future Pantoro performance, including the future trading price of Pantoro shares. The historical information included in this presentation is, or is based on, information that has previously been released to the market.

Exploration Targets, Exploration Results. The information in this report that relates to Exploration Targets and Exploration Results is based on information compiled by Mr Scott Huffadine (B.Sc. (Hons)), a Competent Person who is a Member of the Australian Institute of Geoscientists. Mr Huffadine is a Director and full time employee of the Company. Mr Huffadine is eligible to participate in short and long term incentive plans of and holds shares, options and performance rights in the Company as has been previously disclosed. Mr Huffadine has sufficient experience that is relevant to the style of mineralisation and type of deposit under consideration and to the activity being undertaken to qualify as a Competent Person as defined in the 2012 Edition of the 'Australasian Code for Reporting of Exploration Results, Mineral Resources and Ore Reserves'. Mr Huffadine consents to the inclusion in the report of the matters based on his information in the form and context in which it appears.

ASX Listing Rule 5.23 Mineral Resources & Ore Reserves. This presentation contains estimates of Pantoro's ore reserves and mineral resources, as well as estimates of the Norseman Gold Project's ore reserves and mineral resources. The information in this presentation that relates to the ore reserves and mineral resources of Pantoro has been extracted from a report entitled 'Annual Mineral Resource & Ore Reserve Statement' announced on 22 September 2025 and is available to view on the Company's website ([www.pantoro.com.au](http://www.pantoro.com.au)) and [www.asx.com](http://www.asx.com) (Pantoro Announcement).

For the purposes of ASX Listing Rule 5.23, Pantoro confirms that it is not aware of any new information or data that materially affects the information included in the Pantoro Announcement and, in relation to the estimates of Pantoro's ore reserves and mineral resources, that all material assumptions and technical parameters underpinning the estimates in the Pantoro Announcement continue to apply and have not materially changed. Pantoro confirms that the form and context in which the Competent Person's findings are presented have not been materially modified from that announcement.

ASX Listing Rule 5.19 Production Targets. The information in this presentation that relates to production targets of Pantoro has been extracted from reports entitled 'DFS for the Norseman Gold Project', 'Underground Development to Commence at Scotia' announced on 17 January 2024, 'Annual Mineral Resource & Ore Reserve Statement' announced on 22 September 2025 and 'Quarterly Activities/Appendix 5B Cash Flow Report announced on 22 January 2026 and 'December 25 Half Year Report and FY 26 Guidance Update' announced on 9 March 2026 and are available to view on the Company's website ([www.pantoro.com.au](http://www.pantoro.com.au)) and [www.asx.com](http://www.asx.com) (Pantoro Production Announcements).

For the purposes of ASX Listing Rule 5.19, Pantoro confirms that all material assumptions underpinning the production target, or the forecast financial information derived from the production target, in the Pantoro Production Announcements continue to apply and have not materially changed.

JORC Code. It is a requirement of the ASX Listing Rules that the reporting of ore reserves and mineral resources in Australia comply with the Joint Ore Reserves Committee's Australasian Code for Reporting of Mineral Resources and Ore Reserves ("JORC Code"). Investors outside Australia should note that while ore reserve and mineral resource estimates of the Company in this document comply with the JORC Code (such JORC Code-compliant ore reserves and mineral resources being "Ore Reserves" and "Mineral Resources" respectively), they may not comply with the relevant guidelines in other countries and, in particular, do not comply with (i) National Instrument 43-101 (Standards of Disclosure for Mineral Projects) of the Canadian Securities Administrators (the "Canadian NI 43-101 Standards"); or (ii) Item 1300 of Regulation S-K, which governs disclosures of mineral reserves in registration statements filed with the SEC. Information contained in this document describing mineral deposits may not be comparable to similar information made public by companies subject to the reporting and disclosure requirements of Canadian or US securities laws.



# Unlocking growth upside at Norseman



Norseman is strategically located within an underexplored goldfield and supported by four high grade production zones. The project is well positioned to expand production to +200kozpa, supported by a large pipeline of exploration stage deposits

## Large, High-Grade Mineral Resource

43.2 Mt @  
3.3 g/t for  
4.6 million  
ounces gold



Operations are concentrated across **four proven mining areas** (OK, Scotia, Gladstone and Mainfield).



Well capitalised with many low capital expansion options.  
**Liquidity of A250.3M with no debt or hedging.**



Strong balance sheet and **unhedged production** with upside exposure to gold.



Focussed on **strong margins and profitability** with growth **organically funded**.



### Notes:

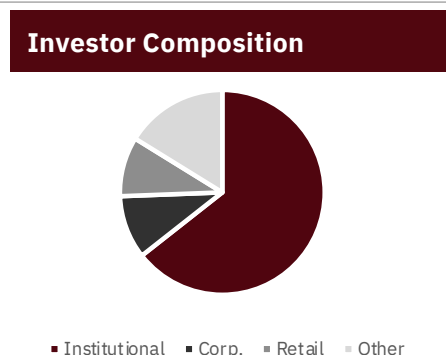
1. Refer to page 3 for cautionary statements regarding production targets.
2. Refer last page for full details of Mineral Resource & Ore Reserve.

# Corporate Structure & Board



As at 7 May 2026		A\$
Share price	\$/sh	3.43 <sup>1</sup>
Fully-diluted shares on issue	#	400
<b>Market Capitalisation</b>	<b>A\$m</b>	<b>1,371.8 <sup>1</sup></b>
(-) Cash and gold	A\$m	250.3 <sup>2</sup>
(+) Debt	A\$m	-
Buy-back Activity	2.99M shares, \$10.6M	

Major Shareholders	
Regal FM	9.8%
Sprott	7.2%
Tulla Resources	6.1%
Vanguard	5.5%
State Street	4.4%



Board of Directors		
	<b>Paul Cmrlec</b> Managing Director and CEO	<ul style="list-style-type: none"> <li>Mining engineer with 30 years of experience in the industry</li> <li><b>Tenure:</b> 14+ years</li> </ul>
	<b>Wayne Zekulich</b> Non-Executive Chairman	<ul style="list-style-type: none"> <li>Senior finance executive with strong background in M&amp;A and capital markets</li> <li><b>Tenure:</b> 6+ years</li> </ul>
	<b>Fiona Van Maanen</b> Non-Executive Director	<ul style="list-style-type: none"> <li>Highly experienced ASX CFO in the resource sector; Multiple board roles in industry</li> <li><b>Tenure:</b> 6+ years</li> </ul>
	<b>Mark Maloney</b> Non-Executive Director	<ul style="list-style-type: none"> <li>Founder and managing partner of Tulla Resources Group; Strong market &amp; capital market experience</li> <li><b>Tenure:</b> 3+ years (appointed Jun 2023)</li> </ul>
	<b>Stuart Mathews</b> Non-Executive Director	<ul style="list-style-type: none"> <li>Former senior executive at GoldFields, over 30 years of operational experience.</li> <li><b>Tenure:</b> 1+ years (appointed Jan 2025)</li> </ul>

***Pantoro's board of directors have >100 years of cumulative industry experience with multiple board members previously in leadership roles of ASX-listed miners with organic and inorganic growth experience***

1. Share price and market capitalisation as at 7 May 2026.  
 2. Cash and gold as at 31 March 2025.  
 3. Major shareholders as at 31 March 2026 or as notified to the Company.  
 4. Investor composition and domicile as at 31 March 2026.

# H1 FY 2026 Key Metrics

## Our key focus:

- ✓ Maintain strong margins and profitability under all conditions.
- ✓ Responsibly deploying capital to secure long-term growth in Mineral Resources, Ore Reserves and production.
- ✓ Developing additional underground mines to increase mill head grade and gold production.
- ✓ Providing return to shareholders – share buyback underway.

**41,623 oz**  
Production



AISC  
**\$2,809/oz**



Reduces with increased production

EBITDA  
**\$135.5M**



**\$85M**  
Half year  
gross profit

**\$56M\***  
Half year  
NPAT

\* While a tax expense of \$25M was recognised, no tax is payable due to off set against carry forward losses.

**\$250.3M**  
Cash and Gold  
at 31 March 2025

# 100% ownership of a gold province



## WORLD-CLASS GREENSTONE BELT

Pantoro Gold's tenure is situated in the southern end of the most gold-endowed Greenstone Belt of the Yilgarn Craton. The Norseman-Wiluna Greenstone Belt has seen >195Moz<sup>2</sup> Au produced to date.

## HIGHLY PROSPECTIVE

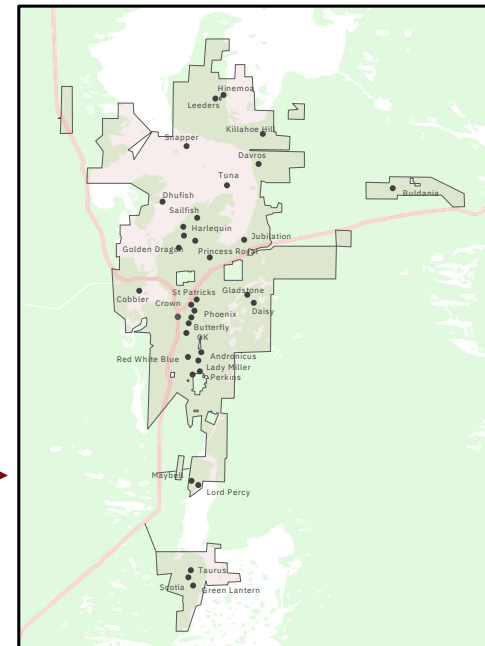
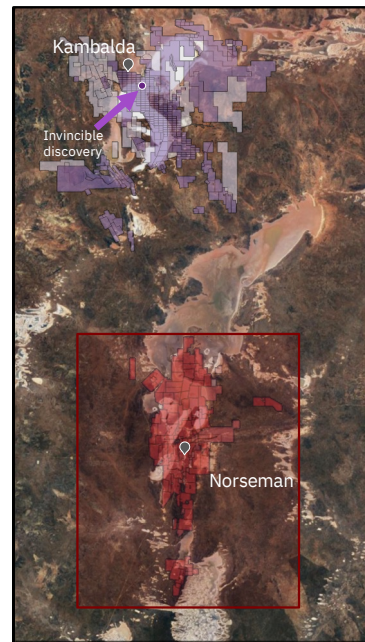
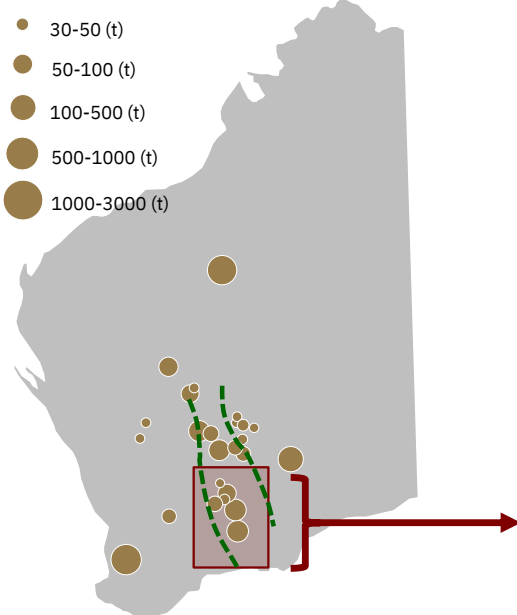
The area south of Kambalda is highly prospective, with 6Moz Au produced from Norseman tenure to date. Much of the region is covered by lakes with minimal exploration

## SIGNIFICANT EXPLORATION UPSIDE

Pantoro Gold's Norseman tenure is a significant proportion of the highly prospective region, including Lake Cowan which has had minimal modern exploration

### MAJOR WA GOLD DEPOSITS<sup>1</sup>

- 30-50 (t)
- 50-100 (t)
- 100-500 (t)
- 500-1000 (t)
- 1000-3000 (t)



1. Adapted from Rush Australia's 21<sup>st</sup> Century Gold Industry (2016)  
 2. WA Department of Mines, Industry Regulation and Safety 2019 Major Commodities Resources Data. Cumulative Gold Production from the following mineral fields: Broad Arrow, Coolgardie, Dundas, East Coolgardie, East Murchison, Mt Margaret, North Coolgardie, North East Coolgardie.

# Norseman Gold Project Overview

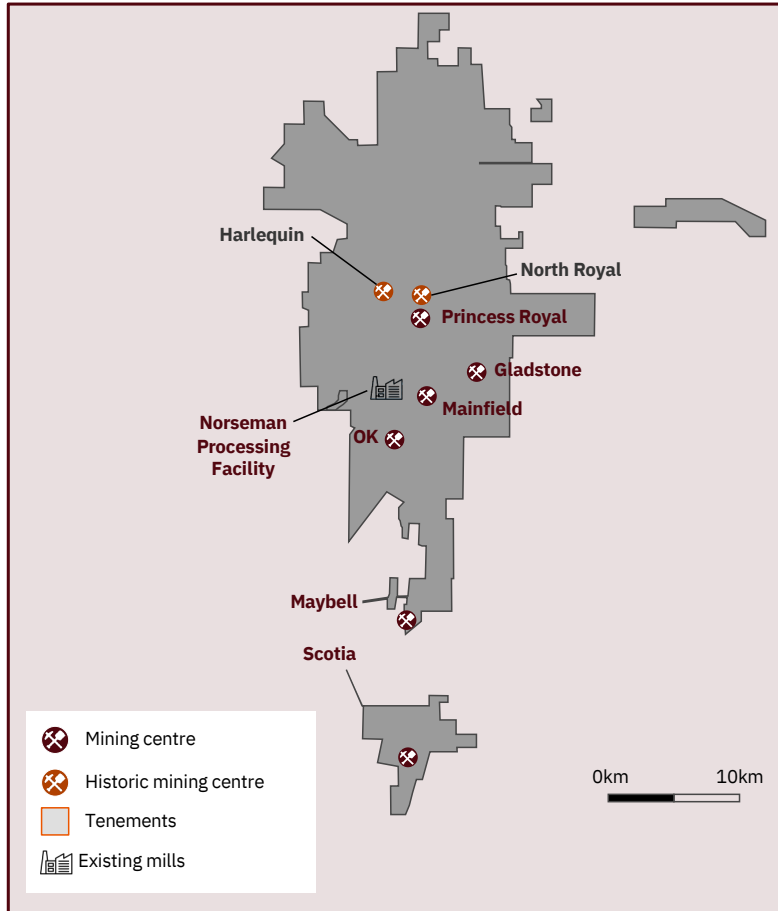
Pantoro is progressing mine development and drilling across the Norseman tenement package



**800 km<sup>2</sup>  
tenure  
position**

70 km along  
strike of one  
of **Australia's  
most  
significant  
goldfields.**

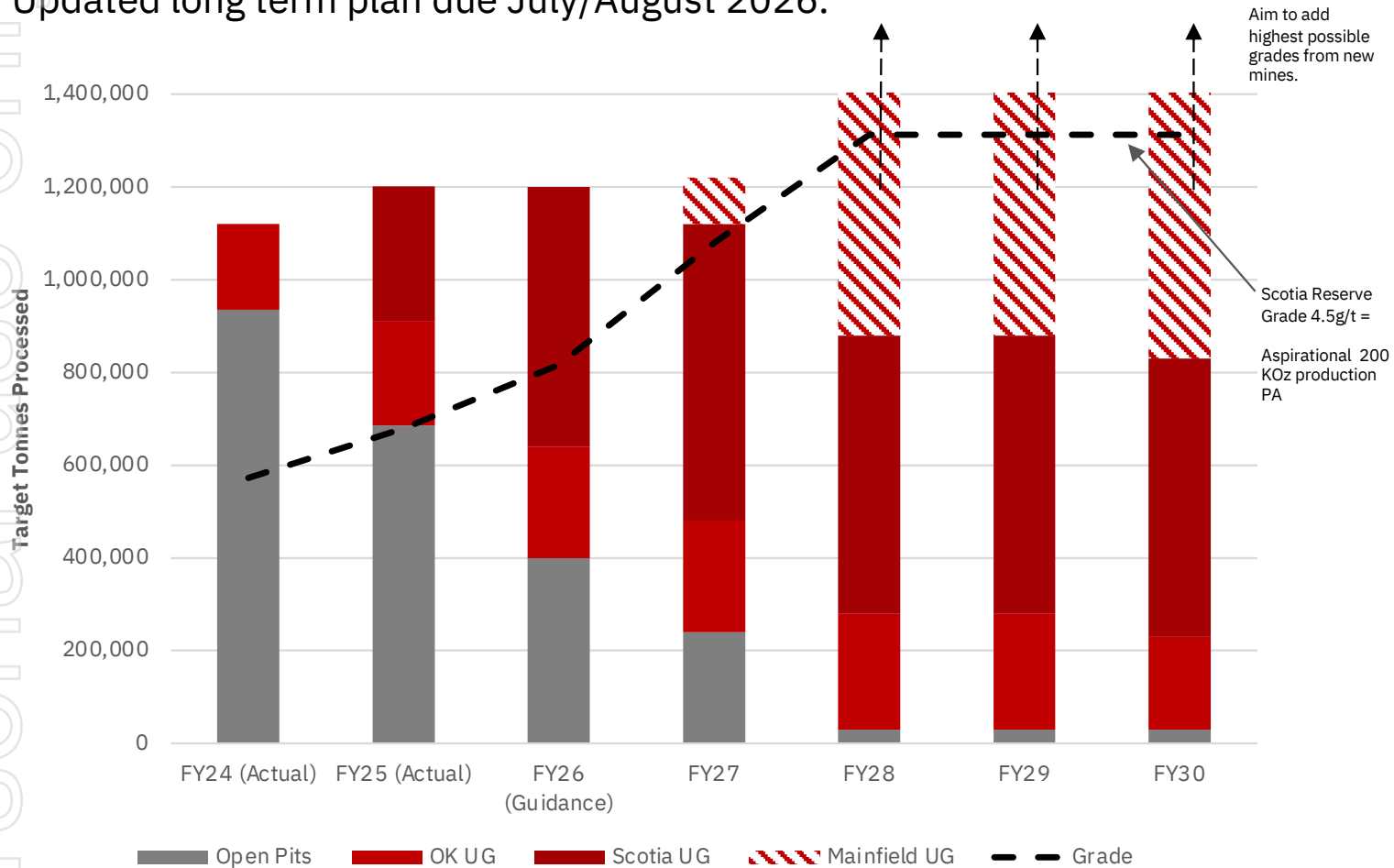
Historical  
production of  
approximately  
**6 million  
ounces.**



<b>Norseman Processing Facility</b>	Processing	<ul style="list-style-type: none"> <li>Processing is currently running comfortably at 1.2Mtpa with excellent recovery of 95%.</li> <li>Ready to upgrade to 1.4-1.5Mtpa without major costs.</li> </ul>
<b>Scotia UG</b>	Producing	<ul style="list-style-type: none"> <li>Large system with mineralisation over 4km of strike.</li> <li>High grade production from Scotia underground.</li> </ul>
<b>OK UG</b>	Producing	<ul style="list-style-type: none"> <li>At steady state production of ~30-35kozpa.</li> <li>Ore reserve has increased every year since mining commenced despite ongoing production.</li> </ul>
<b>Gladstone OP</b>	Producing	<ul style="list-style-type: none"> <li>526,000 t @ 3.42 g/t Au for 58,000 oz to be mined over the next two years.</li> <li>Additional open pit stage under consideration.</li> <li>Mining to commence at Daisy South Open Pit.</li> </ul>
<b>Mainfield UG</b>	Development & Exploration	<ul style="list-style-type: none"> <li>Most prolific mining area in Norseman with over 3Moz mined.</li> <li>Mine re-entry completed, facilitating recommencement of production from FY27.</li> </ul>
<b>Princess Royal</b>	Exploration	<ul style="list-style-type: none"> <li>North Royal has already produced 1,800koz @ 17 g/t.</li> <li>Strong underground potential, currently underexplored 300m below surface. Drilling underway.</li> </ul>

# September 2024 Growth Strategy

Updated long term plan due July/August 2026.



**Additional high-grade sources coming on-line for FY2027.**

Strategy to replace open pit feed with higher grade underground ore.

Announced decision to commence mining in O’Briens and Crown South Lode in Mainfield.

Scotia underground now producing from multiple areas.

Gladstone open pit high-grade drilling has extended pit life.

Agreement with Mega Resources.

8 drill rigs to continue expansion drilling throughout the year.

# Processing - Excellent Recovery and Reliability



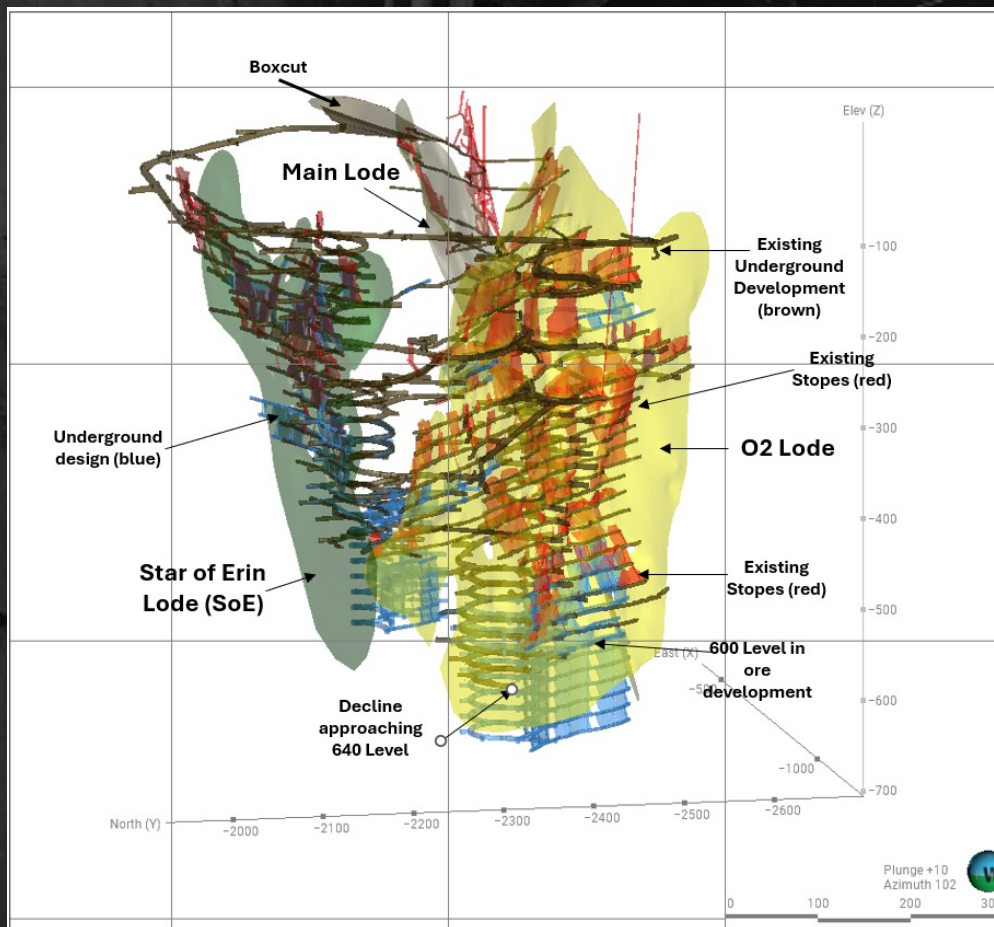
Norseman processing plant currently operating at 1.2Mt per annum

- Comfortably running at 1.2MTPA with further increases up to 1.4 – 1.5 MTPA easily achieved WITHOUT any major upgrade costs.
- Upgrades are underway.
- Excellent recovery: 95.1% FY2026 YTD.
- Targeting growth through addition of high-grade underground ounces.

1.2 MTPA Processing Rate			
Grade (g/t)	Oz (Mill Feed)	Recovery	Oz (Recovered)
2.5	96,452	95%	91,630
3	115,743	95%	109,956
3.5	135,033	95%	128,281
4	154,324	95%	146,607
4.5	173,614	95%	164,933
5	192,904	95%	183,259
6	231,485	95%	219,911
7	270,066	95%	256,563
8	308,647	95%	293,215

1.5 MTPA Processing Rate			
Grade (g/t)	Oz (Mill Feed)	Recovery	Oz (Recovered)
2.5	120,565	95%	114,537
3	144,678	95%	137,444
3.5	168,791	95%	160,352
4	192,904	95%	183,259
4.5	217,018	95%	206,167
5	241,131	95%	229,074
6	289,357	95%	274,889
7	337,583	95%	320,704
8	385,809	95%	366,518

# OK Underground Mine



**Ore Reserve has increased every year** since mining commenced, despite ongoing depletion

Producing in steady state at **circa 35,000 - 40,000 Oz per annum.**

**FY 2025 mined grade 5.83g/t**

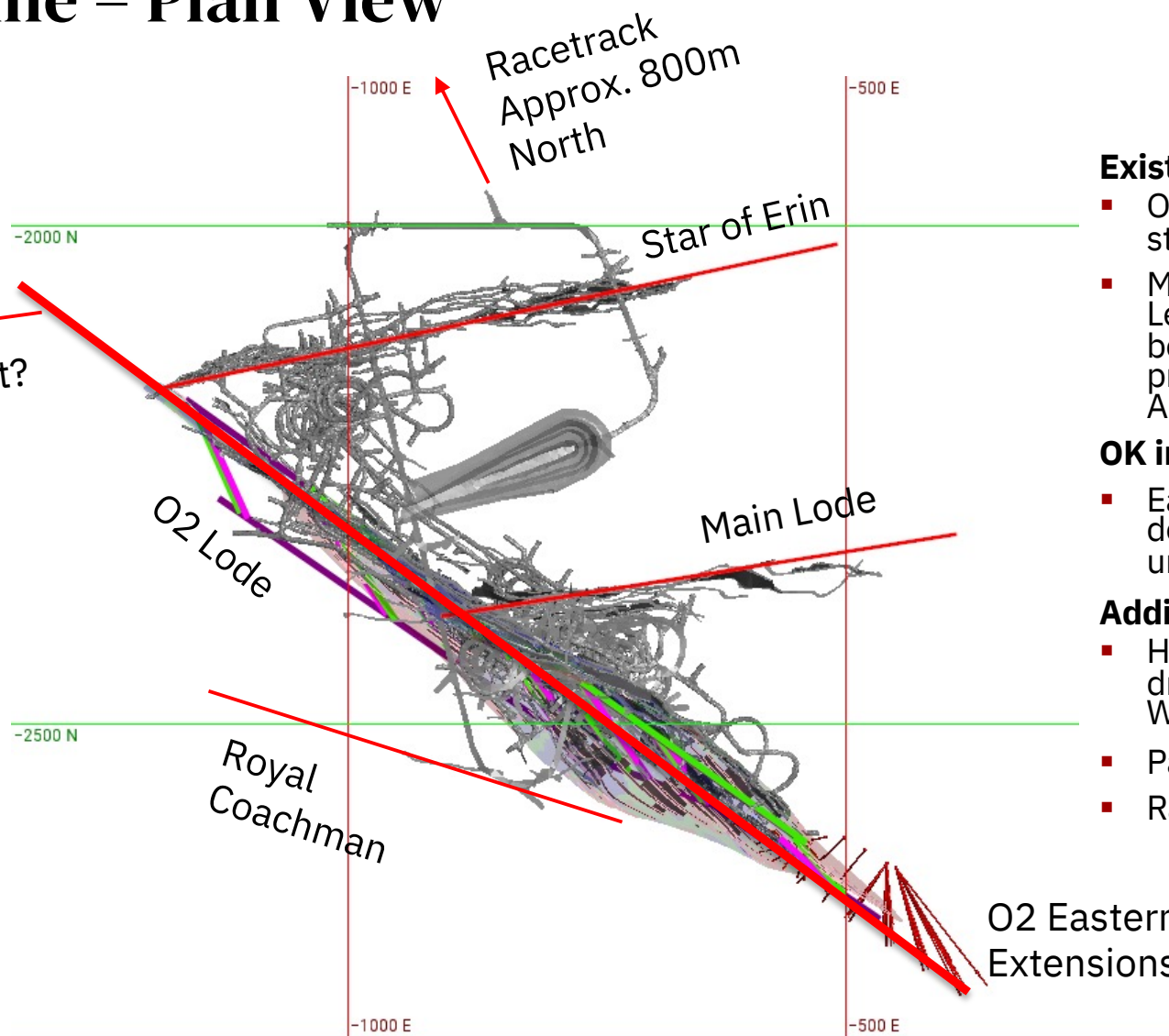
Large **extensional exploration drilling** program underway and set to continue for all of FY2026 and FY 2027.

Drilling extensions in both the Star of Erin and O2 lodes for the foreseeable future.

**Commenced development of Main Lode** in lower levels.

Contract to transition to Redpath under whole of operation agreement on 1 May 2026. Brings numerous synergies across the operation.

# OK Mine – Plan View



## Existing Active Lodes

- O2 and Star of Erin (SOE) continuing strongly at depth.
- Main Lode strong on 580 and 600 Levels. No development and little data between new development and previous base of workings at 330 mRL. Also open at depth.

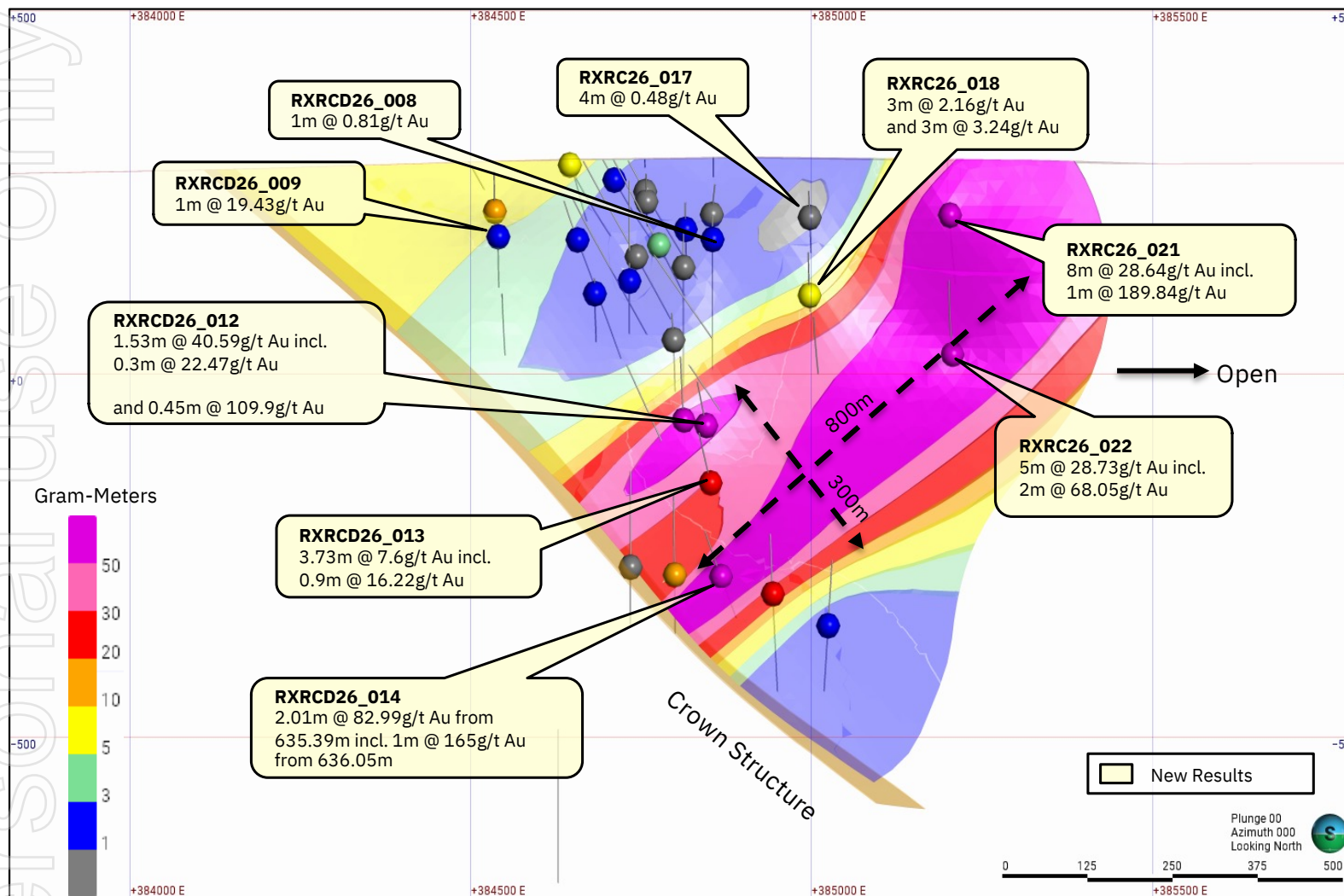
## OK in-mine opportunities

- Eastern Extensions to the O2 orebody defined. Larger drill program underway.

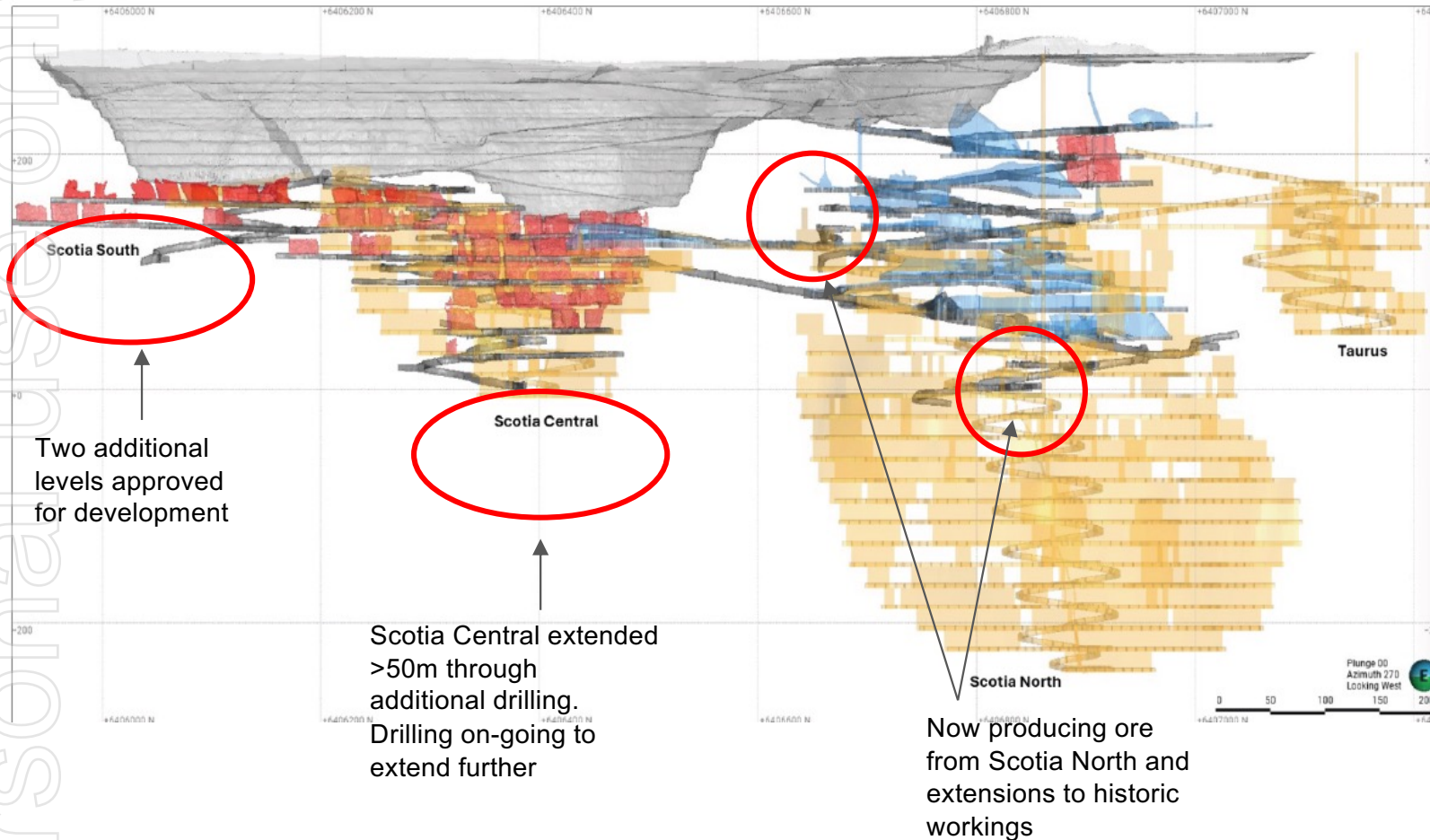
## Additional Near Mine Opportunities

- High grade zones indicated by historic drilling in the Railway Prospect to the West.
- Pascoes Crosslink to the East
- Racetrack – E-W structure to the North

# Significant Discovery at Racetrack

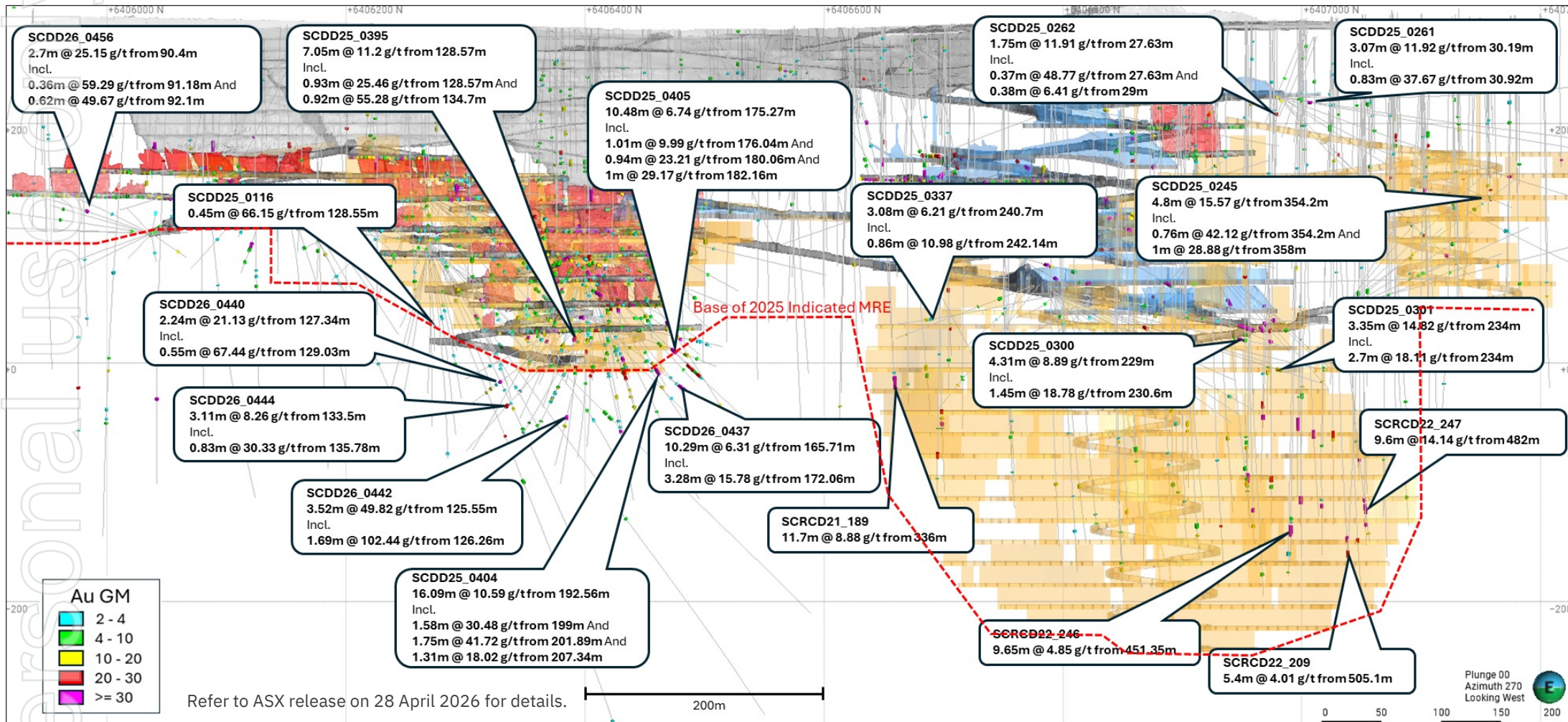


# Scotia Underground Mine



- Development of the South decline commenced May 2024.
- Historic decline now rehabilitated providing two mine accesses.
- Now actively developing and producing ore from 3 areas for the first time – Central Scotia, Scotia North and extensions to historic workings.
- Central Scotia extended another 50m vertical through drilling and remains open.
- 2 new levels approved in Scotia South.

# Scotia – Open in all Directions

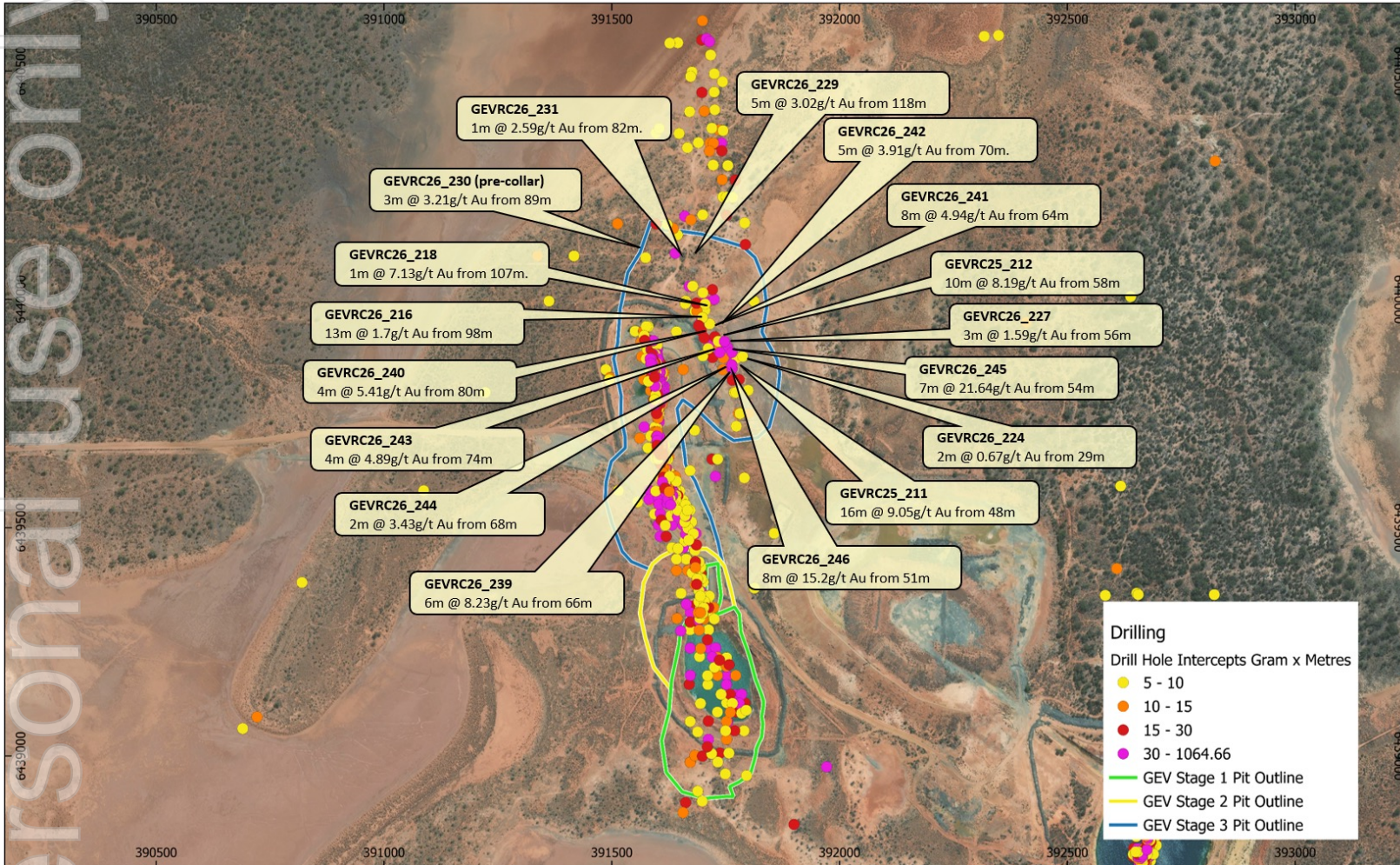


# Gladstone-Daisy Mining Area



- Gladstone lies approximately 8 km East of the Norseman processing plant.
- 3.8M BCM to be excavated during stages 1 and 2 of open pit mining.
- GEV Stage3 now underwritten with additional infill drilling being undertaken prior to committing to mining stage 4.
- 317,000 tonnes @ 2.8 g/t Au for 28,500 oz to be mined in stages 1 and 2 .
- GEV mining area Schedule now 526,000t @ 3.42 g/t Au for 58,000 oz with inclusion of Stage 3. This will increase with inclusion of stage 4 and old west pit. Stage 4 drilling underway.

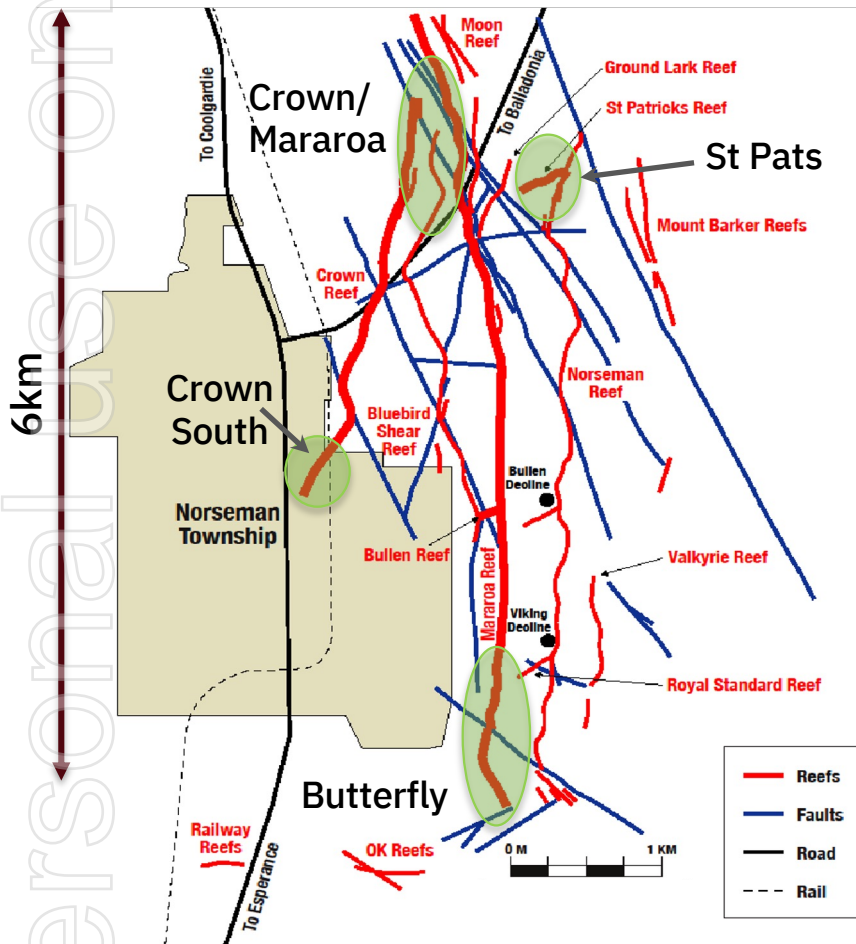
# Gladstone Open Pit – Stage 3 Grade Control



- Stages 1 and 2 are approved by board and being mined.
- Stage 3 infill and grade control drilling returning very strong results with approximately half of results outstanding.
- Two years of pit life remaining, with an additional fourth stage under consideration.

Refer to ASX release on 16 March 2026 for details.

# Mainfield – Major Opportunity



## Mainfield is the most prolific mining area at Norseman to date

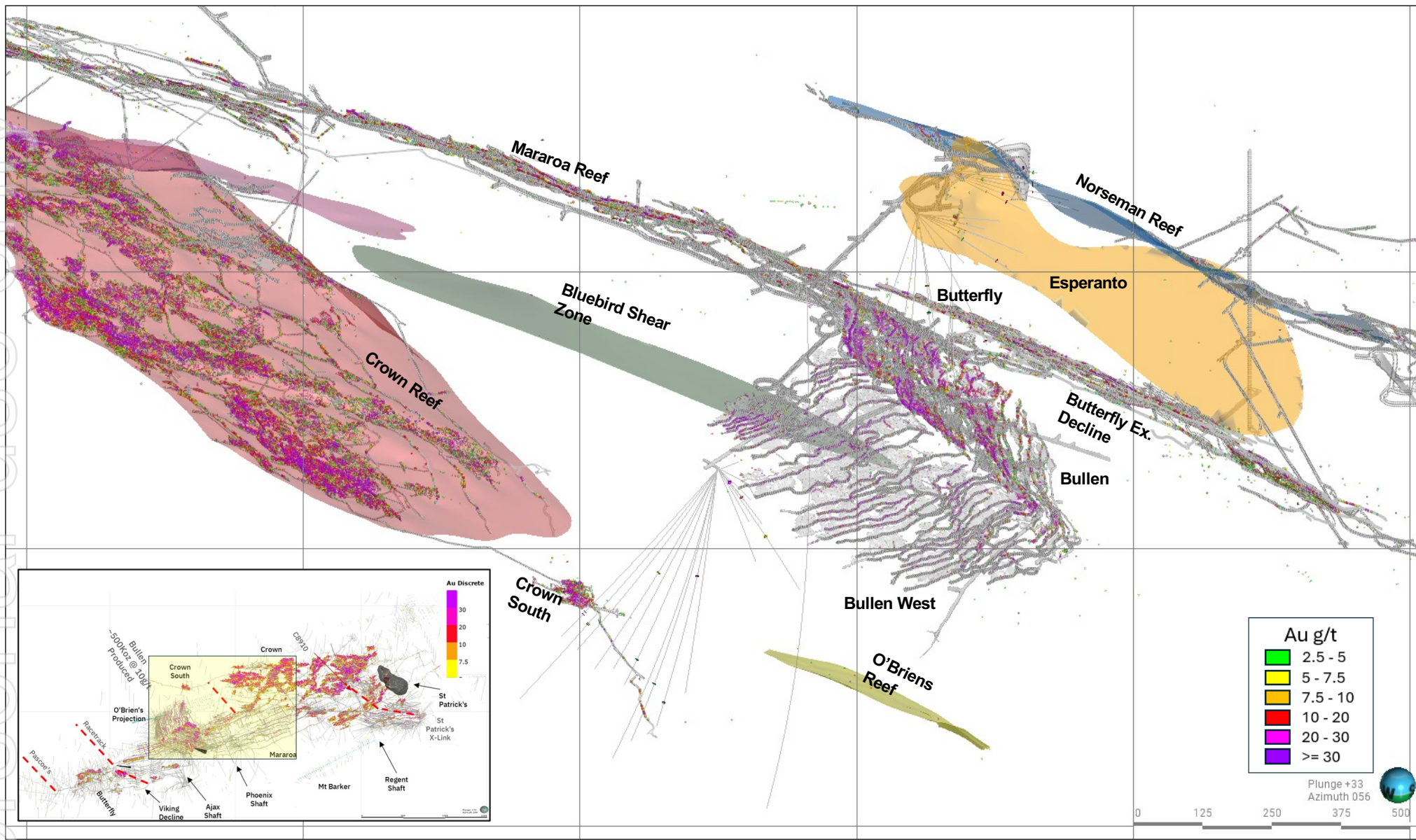
- First pass drilling completed with focus areas identified.
- Drill areas focused on zones easily accessed from existing infrastructure.
- Large areas unmined previously.

## • Very **high-grade mineralisation** encountered in Pantoro drilling:

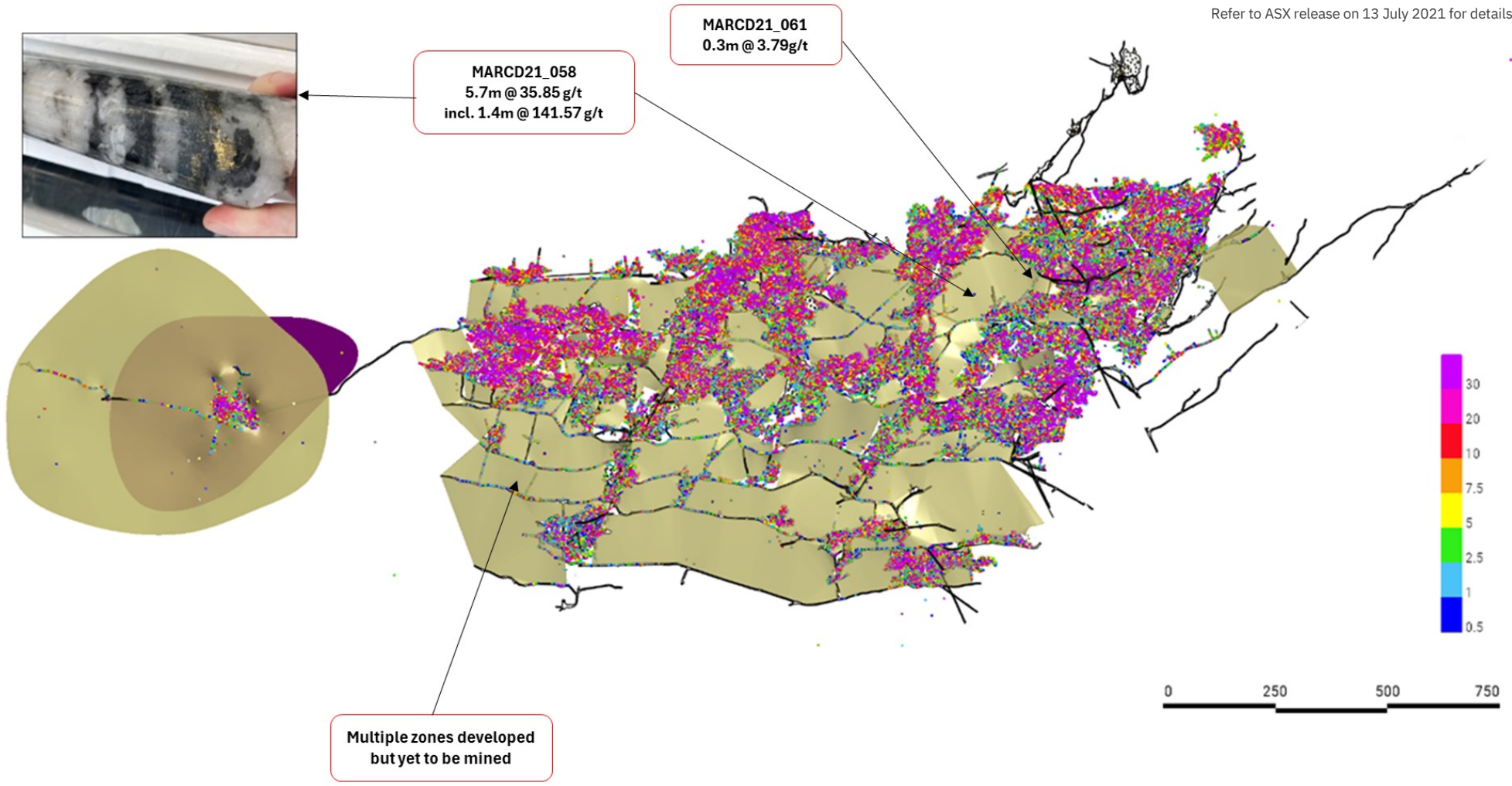
5.7 m @ 35.85 g/t Au inc. 1.4 m @ 141.57 g/t Au.	
4 m @ 6.86 g/t Au.	
1 m @ 23.5 g/t Au.	2 m @ 6.21 g/t Au.
0.45 m @ 21.9 g/t Au.	2 m @ 5.8 g/t Au.
2 m @ 20.61 g/t Au.	4 m @ 5.68 g/t Au.
2 m @ 15.87 g/t Au.	3 m @ 5.35 g/t Au.
6 m @ 14.94 g/t Au.	4 m @ 4.33 g/t Au.
1 m @ 10.3 g/t Au.	5 m @ 3.99 g/t Au.
2 m @ 10.8 g/t Au.	4 m @ 3.53 g/t Au.
1.15 m @ 8.47 g/t Au.	3 m @ 3.24 g/t Au.
3 m @ 7.72 g/t Au.	5 m @ 3.20 g/t Au.

Refer to ASX release on 13 July 2021 for details.

personal use only

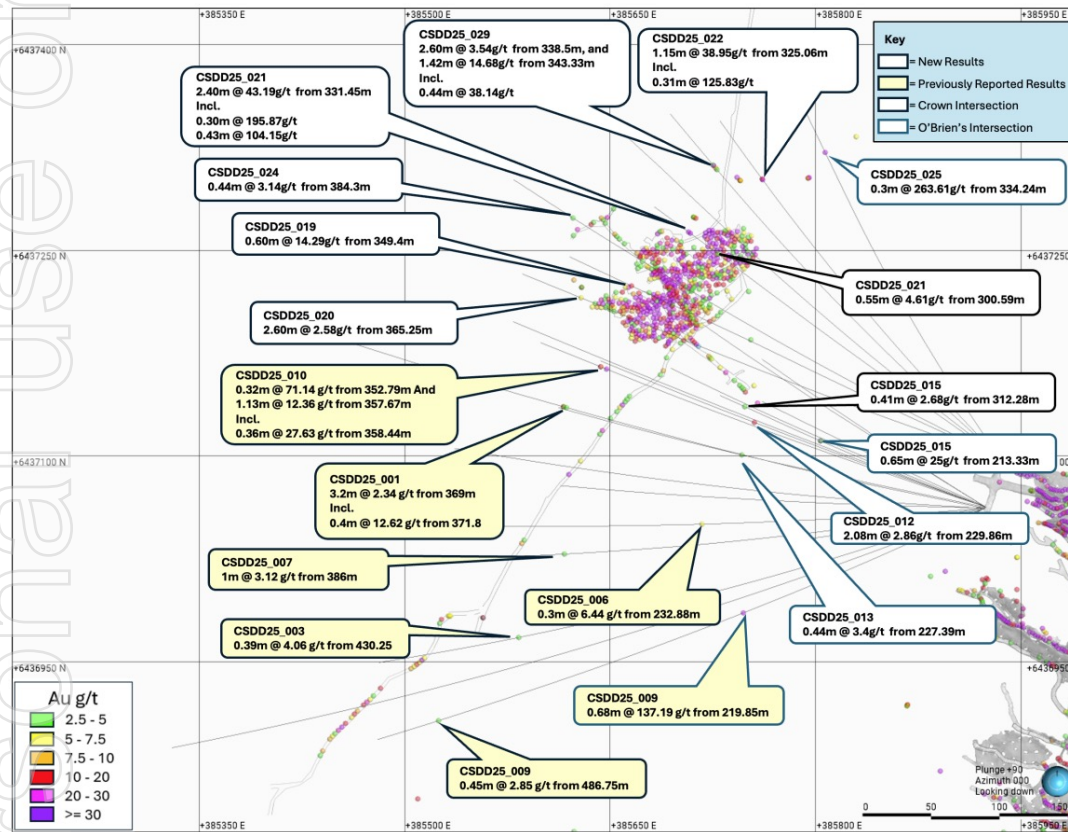


Refer to ASX release on 13 July 2021 for details.



**Crown Reef – historical production 1.1 Moz @ 11.2g/t**

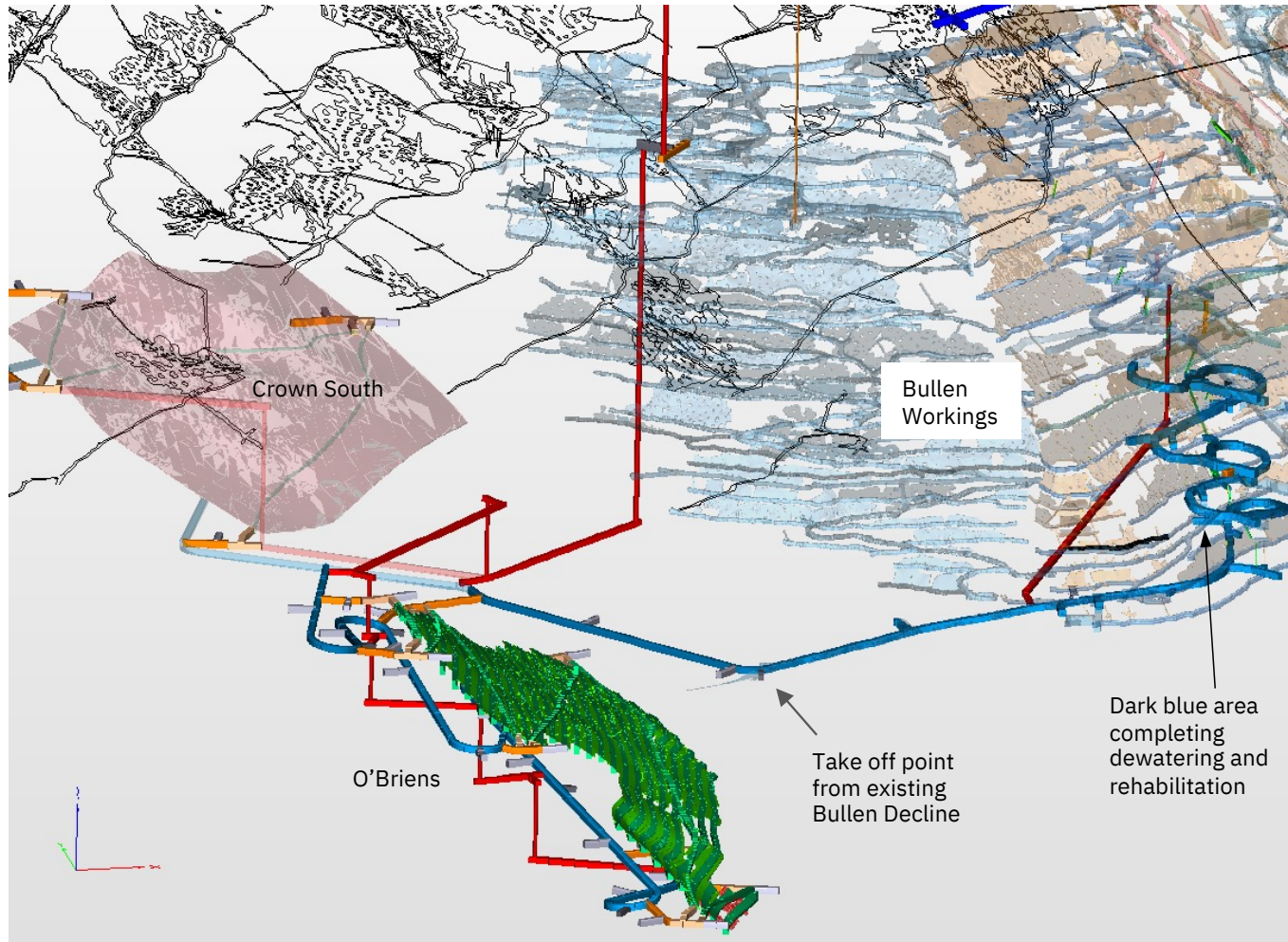
# Mainfield Exploration – Crown South and O'Briens shaping up for next production centre



- Drilling has identified a substantial zone of high-grade mineralisation at Crown South with abundant visible gold noted.
- Results to date include<sup>^</sup>:
  - 1.13 m @ 12.36 g/t Au.
  - 0.32 m @ 71.14 g/t Au.
  - 0.7 m @ 8.42 g/t Au.
  - 2.4m @ 43.19g/t Au (inc. 0.3m @ 195.87g/t and 0.43m @ 104.15 g/t).
  - 1.15m @ 38.95g/t Au (inc. 0.31m @ 125.83g/t).
  - 1.42m @ 14.68g/t Au(inc. 0.44m @ 38.14g/t).
  - 0.3m @ 263.61g/t Au.
  - 0.65m @ 25g/t Au.
- Crown South remains open to the South.

<sup>^</sup> Refer to ASX releases on 13 October 2025 and 25 November 2025 for details.

# O'Briens Lode – Development commencing mid-2026

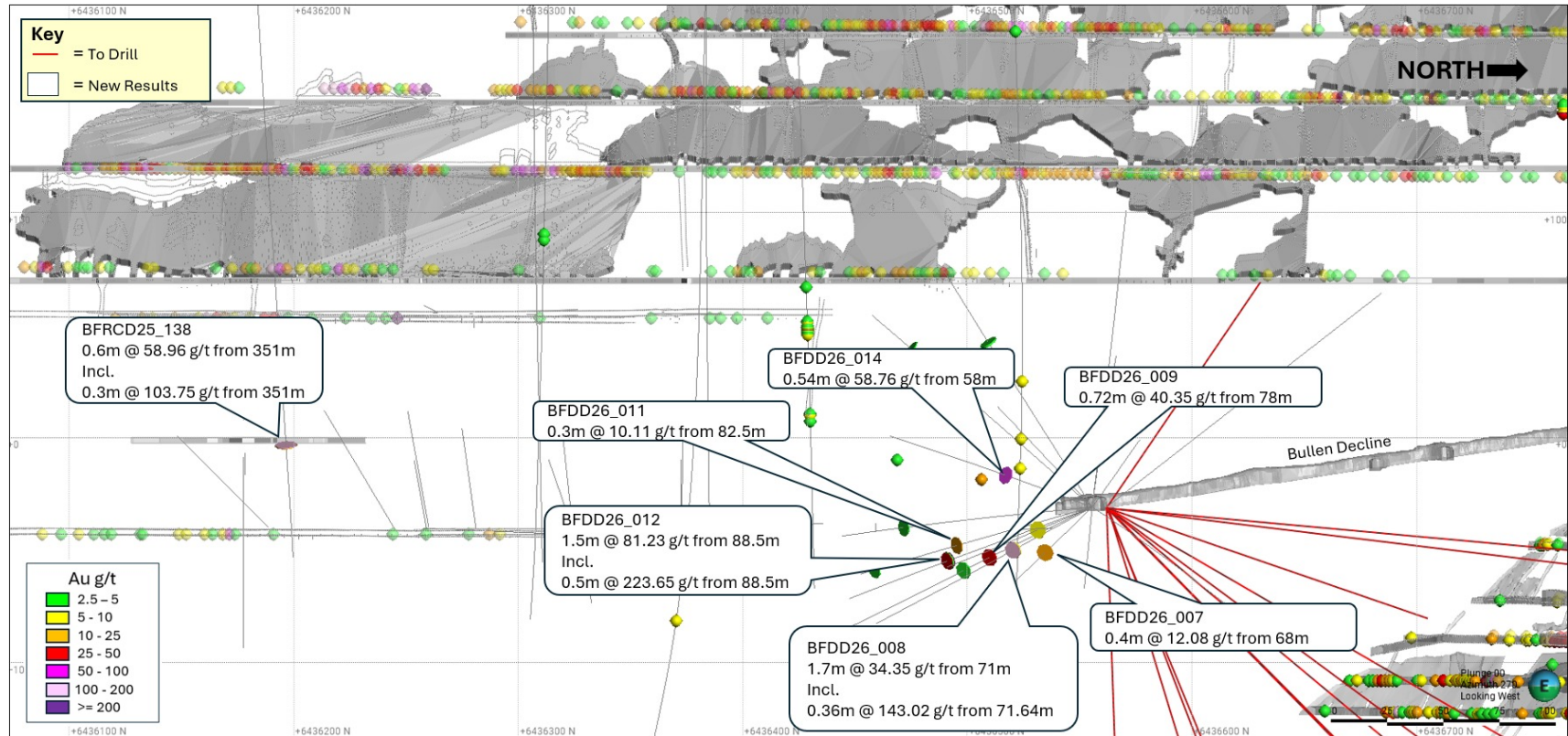


personal use only

# Strong Initial Results in Butterfly



- Area above target zone extensively mined for approximately 200m vertical.
- Excellent strike rate in initial drilling.
- Mineralisation only 70m from exploration decline – easy access.
- Decline can be extended at any time with known mineralisation extending approximately 1.5km south of the current position.



Refer to ASX release on 28 April 2026 for details.

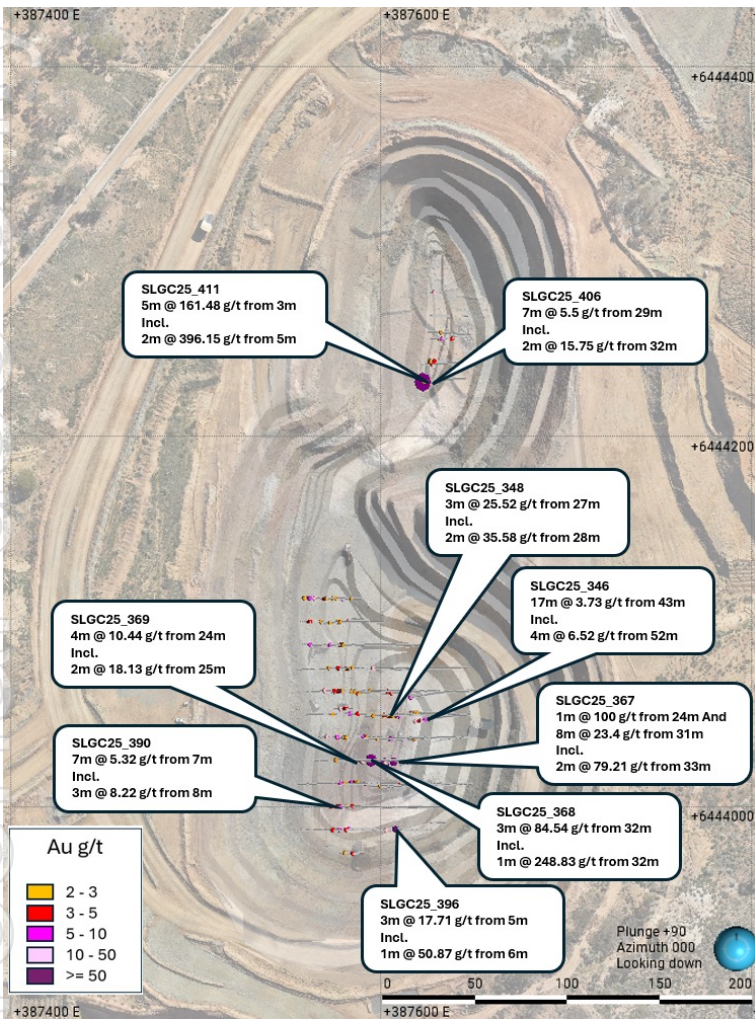
personal use only

# North Royal Underground Target

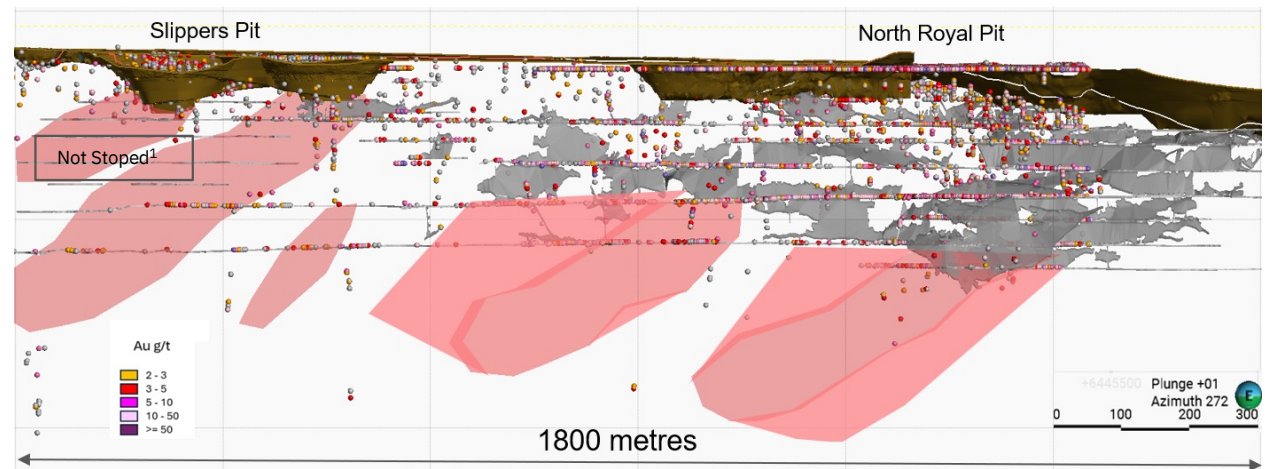


Opportunities over 2km of strike

- North Royal - 1.8Moz produced at an average grade of 17 g/t Au from North Royal Deposits. Underexplored below 300m below surface. Historical mine produced at approximately 5,000 OVM.
- Slippers - depth extensions provides a near term development opportunity.

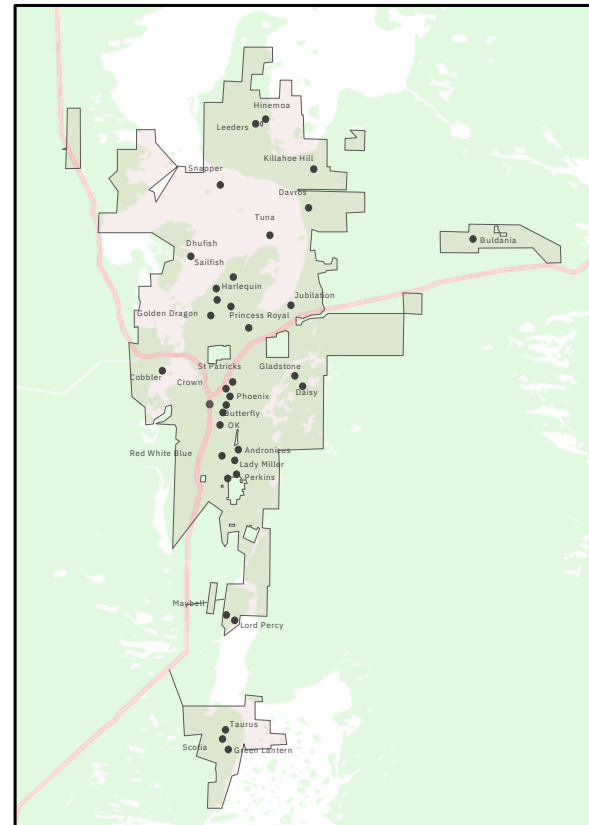
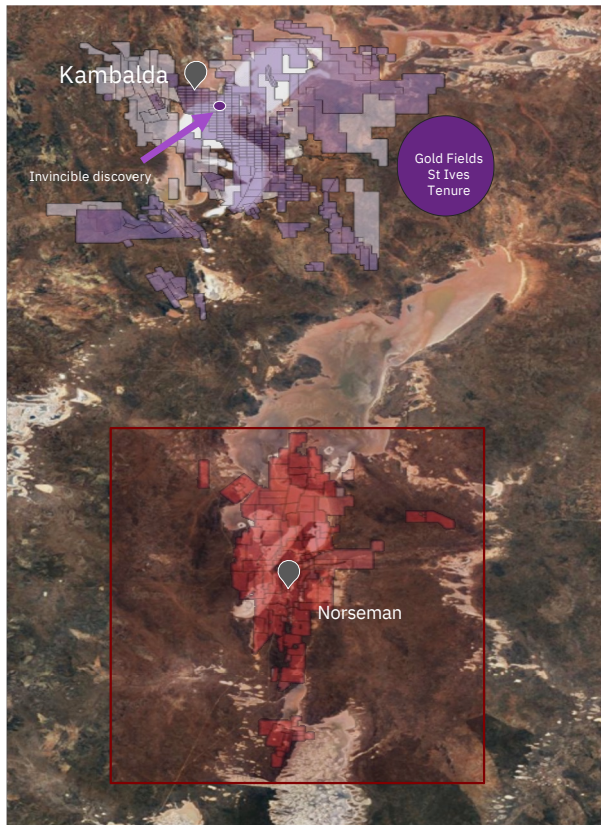


Refer to ASX release on 27 October 2025 for details.



1. Drilling to date has not intercepted stope voids. No known stoping records

# First Regional Exploration in 30 Years



Norseman did not have any effective exploration between the mid-1990's and Pantoro's entry in 2019.

**Pantoro is embarking on a project scale regional exploration program – the first for Norseman in three decades.**

**Norseman salt lakes have had little historical attention other than a brief period between 1990 and 1992.**

**Harlequin was discovered during that short period and produced 800KOz at 10g/t.**

# Summary



## Exceptional position, strong cashflow

- Focused on margins. Cash growth while building new mines and advancing growth activities.
- H1 EBITDA A\$135.5 million. Q3 EBITDA \$88 million.
- A\$250.3 million in cash and gold. \$37.8 million (before buy-back) increase last quarter.

## Leveraged to the gold price

- Debt free.
- Unhedged.
- Consistently buying back stock.

## Positioned for growth

- Growth activities progressing to plan with new production from Bullen Decline on-track to commence in June/July 2026.
- Few, if any, Western Australian long-term production centres with known existing high-grade resources and a major paucity of drilling.

Media Enquiries: Sam Macpherson  
Vector Advisors  
[smacpherson@vectoradvisors.au](mailto:smacpherson@vectoradvisors.au)  
+61 401 392 925

Investor Enquiries: Paul Cmrlec  
Managing Director  
[admin@pantoro.com.au](mailto:admin@pantoro.com.au)  
+61 8 6263 1000

# Mineral Resource & Ore Reserve

## Pantoro Global Mineral Resource

	Measured			Indicated			Inferred			Total		
	kT	Grade	kOz	kT	Grade	kOz	kT	Grade	kOz	kT	Grade	kOz
Norseman Gold Project	4,946	2.4	374	19,084	3.1	1,898	19,155	3.8	2,327	43,194	3.3	4,601
<b>Total</b>	<b>4,946</b>	<b>2.4</b>	<b>374</b>	<b>19,084</b>	<b>3.1</b>	<b>1,898</b>	<b>19,155</b>	<b>3.8</b>	<b>2,327</b>	<b>43,194</b>	<b>3.3</b>	<b>4,601</b>

## Pantoro Global Ore Reserve

	Proven			Probable			Total		
	kT	Grade	kOz	kT	Grade	kOz	kT	Grade	kOz
Norseman Gold Project	4,565	1.2	179	8,211	2.6	680	12,777	2.1	859
<b>Total</b>	<b>4,565</b>	<b>1.2</b>	<b>179</b>	<b>8,211</b>	<b>2.6</b>	<b>680</b>	<b>12,777</b>	<b>2.1</b>	<b>859</b>

- Refer to ASX Announcement dated 22 September 2025 for full details of the Mineral Resource and Ore Reserve.
- All Open Pits (0.5 g/t cut-off applied) excluding Gladstone-Everlasting (0.7 g/t cut-off applied, OK and Scotia Underground Mines (2.0 g/t cut-off applied)
- Measured and Indicated Mineral Resources are inclusive of those Mineral Resources modified to produce the Ore Reserves.
- Mineral Resource and Ore Reserve statements have been rounded for reporting.
- Rounding may result in apparent summation differences between tonnes, grade and contained metal content.

personal use only