

## Additional Drill Targets Identified at Nuckulla Hill

- New drill targets have been identified at Bimba and Myall at the Nuckulla Hill Gold Project in South Australia
- Both Bimba and Myall have significant gold anomalism with broad zones of mineralisation from historical drilling, with better results including (see ASX 19/12/24):
  - **24m @ 1.1g/t Au** from 122m, including **1m @ 4.2g/t Au** from 127m (Bimba),
  - **10m @ 1.1g/t Au** from 59m (Bimba), and
  - **1m @ 2.2g/t Au** from 57m (Myall).
- Gold anomalism at both Bimba and Myall strikes over at least 500m, with minimal to no follow up drilling and both remaining open along strike and at depth
- These targets, together with Sheoak and Sheoak East, are heritage cleared and ready for drilling
- Sheoak, Sheoak East, Bimba and Myall are all prospects within the highly prospective Yarlbrinda Shear Zone, which hosts Barton Gold Holdings Limited's (ASX: BGD) neighbouring 1.6Moz Tunkillia Gold Project<sup>1</sup>
- Following the RC program, Auravelle will undertake a large discovery focussed aircore drill program to test multiple earlier stage targets within the 40km strike of the Yarlbrinda Shear Zone within Nuckulla Hill.

### **Auravelle Managing Director Andrew Muir commented:**

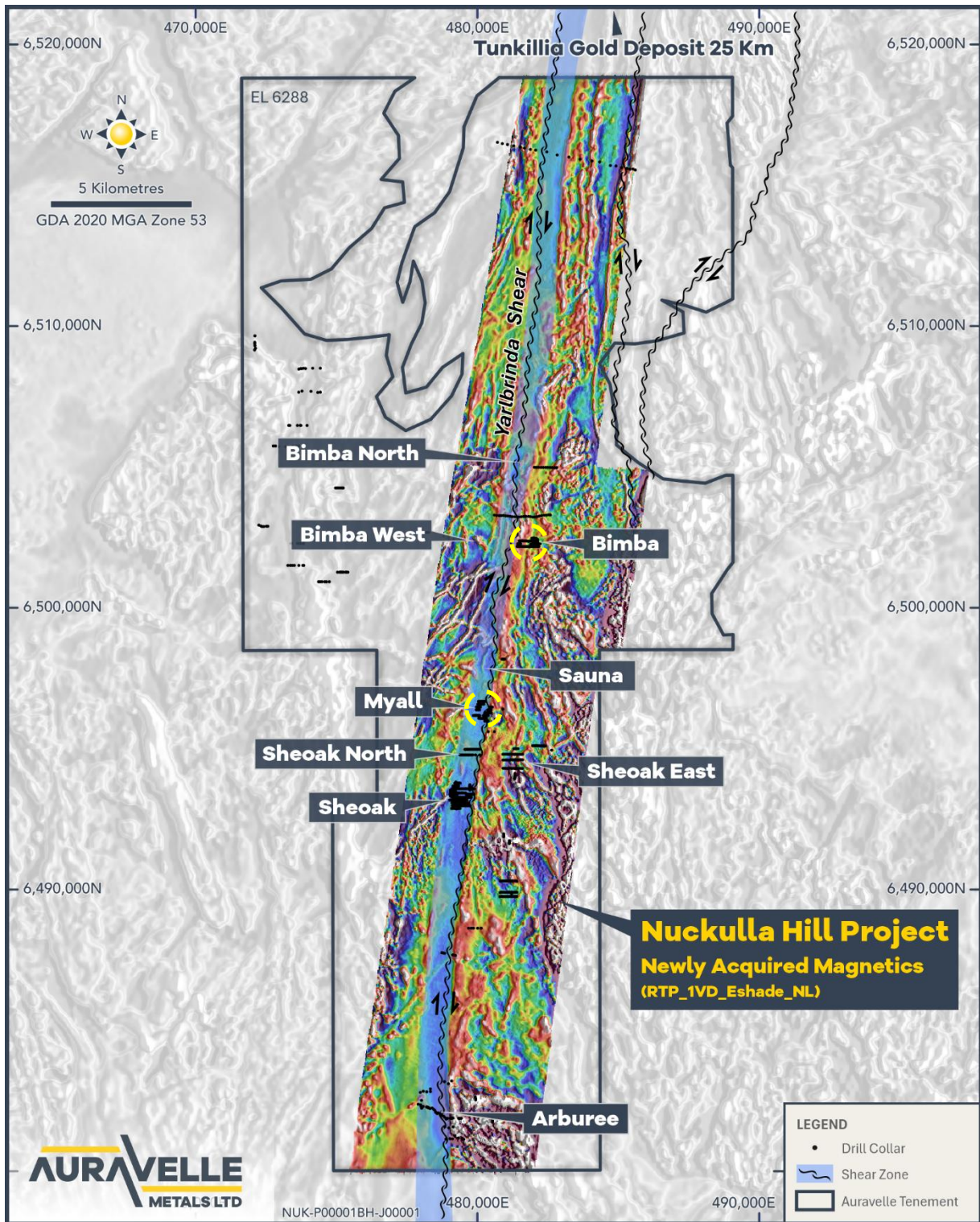
*"The more work we do on the Nuckulla Hill Project, the more targets we identify. Our newly integrated quality datasets, including the historical drilling, calcrete and soil sampling, plus our recent detailed magnetics survey have enabled us to generate a large number of compelling new targets requiring testing.*

*Our pending RC program will test a number of these targets, including Sheoak, Sheoak East and Bimba. All of these have sizeable gold anomalies in drilling, and are associated with key structures, large geochemistry anomalies, and remain open along strike and at depth.*

*Beyond the pending RC program, we look forward to undertaking a large-scale regional discovery focussed aircore program, testing multiple earlier stage targets including Bimba West, Myall and Sheoak North, all identified from the recent detailed magnetic study, structural targeting review and soil sampling."*

<sup>1</sup> See <https://bartongold.com.au/projects/jorc-mineral-resources/>

For personal use only



**Figure 1: Nuckulla Hill Project showing the Detailed Aerial Magnetic Survey (colour) over historical regional magnetics (black and white)<sup>2</sup>**

<sup>2</sup> see ASX 17/4/26

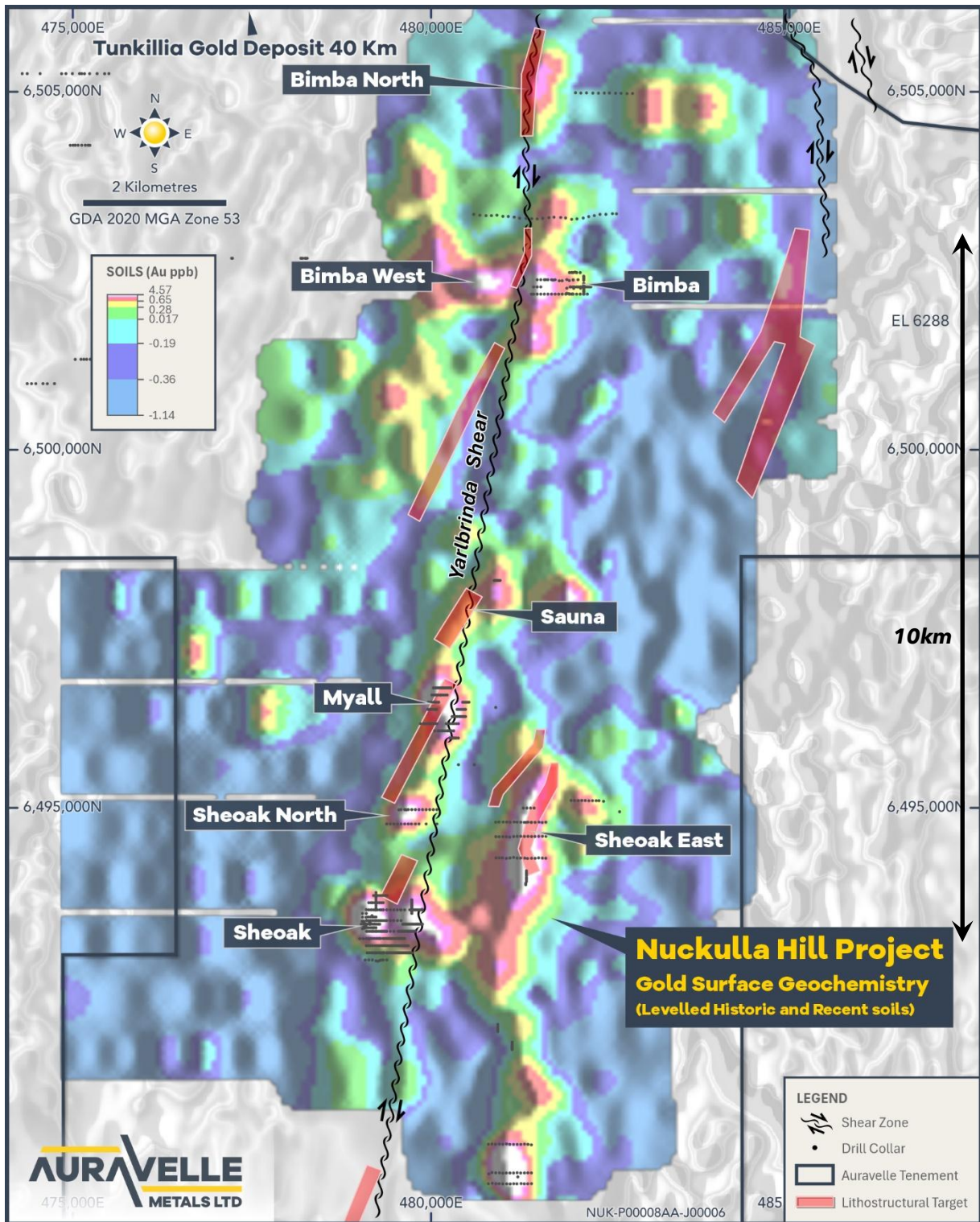


Figure 2: Central Nuckulla Hill Area with All Drilling over Gold Anomalism in Soil Sampling and Structural Targets<sup>3</sup>

<sup>3</sup> See ASX: 22/10/25, 9/1/26, 25/02/26

For personal use only

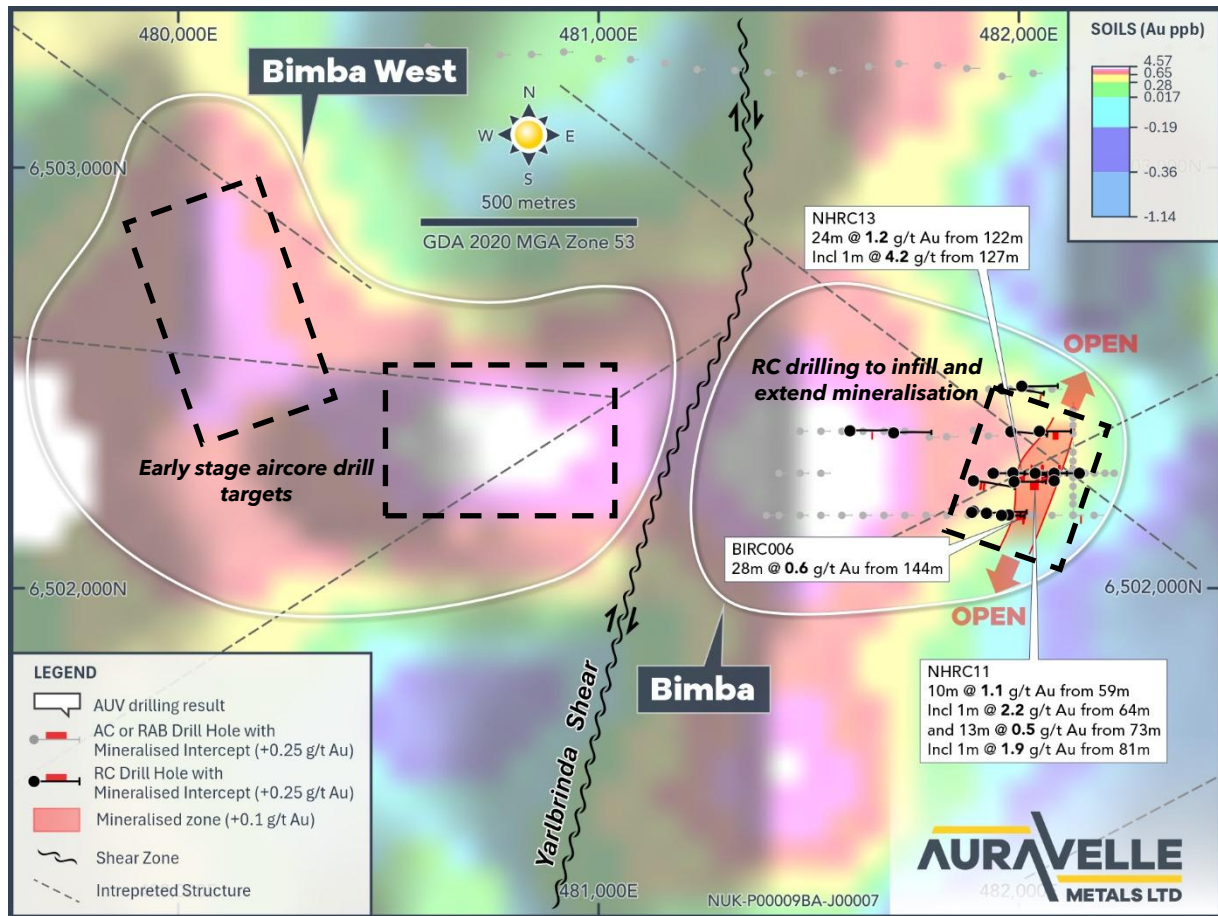


Figure 3: Bimba and Bimba West Prospects - Drilling to Date with Gold Anomalism in Soil Sampling<sup>4</sup>

<sup>4</sup> For previously announced results, see ASX: 19/12/24, 25/02/26

For personal use only

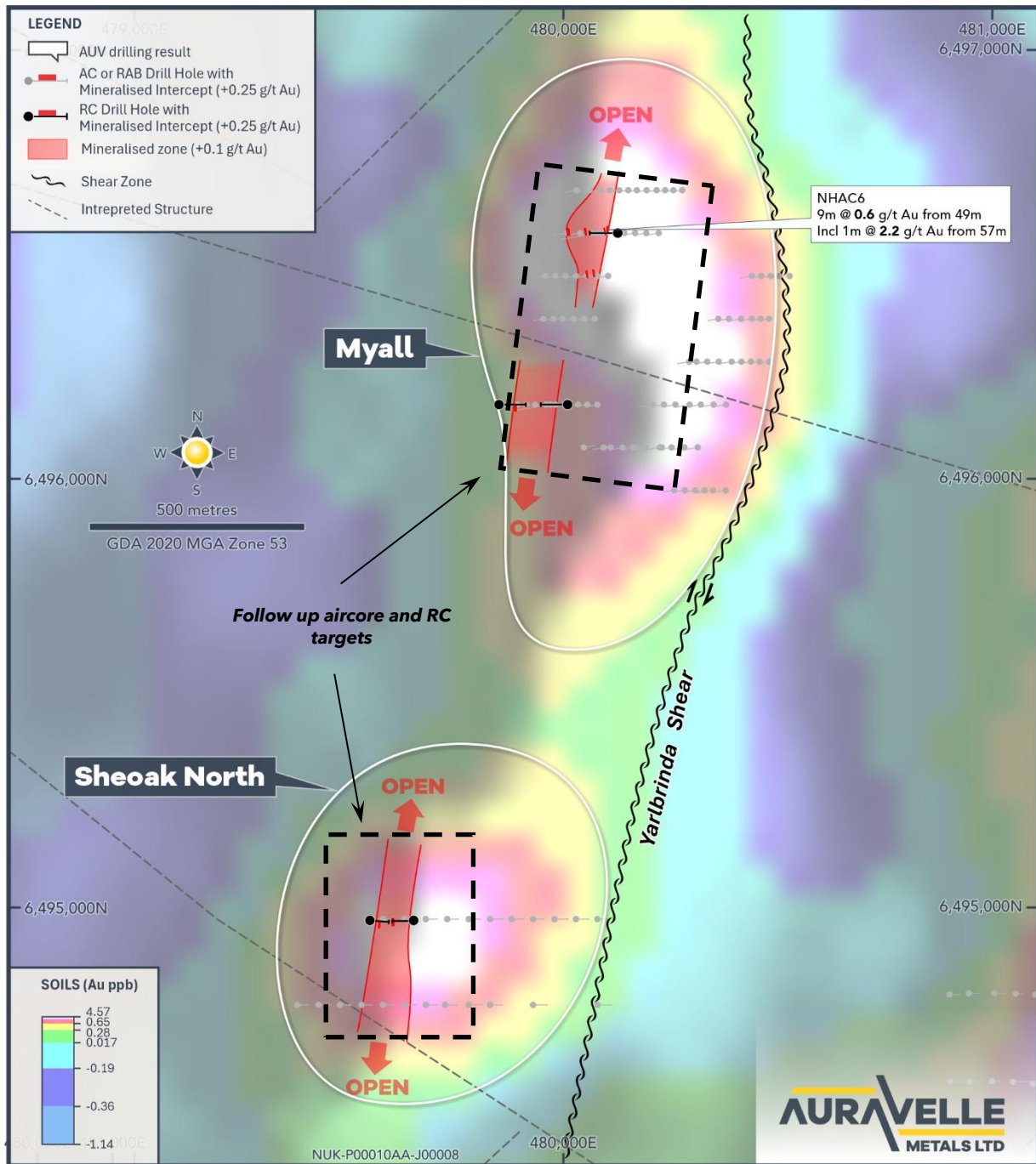


Figure 4: Myall and Sheoak North Prospects - All Drilling over Gold Anomalism in Soil Sampling<sup>5</sup>

<sup>5</sup> For previously announced results, see ASX: 19/12/24, 25/02/26

For personal use only

## Looking Forward

Auravelle continues its aggressive program of groundwork and exploration activity, with significant ongoing news flow and activities across its key gold projects, including, but not limited to:

- Update on upcoming aircore drill targeting at Nuckulla Hill
- In-fill and extensional RC drilling at Sheoak and other prospects at Nuckulla Hill
- Discovery focused air-core drilling at Nuckulla Hill
- Soil sampling at the Crown Gold Project in Western Australia

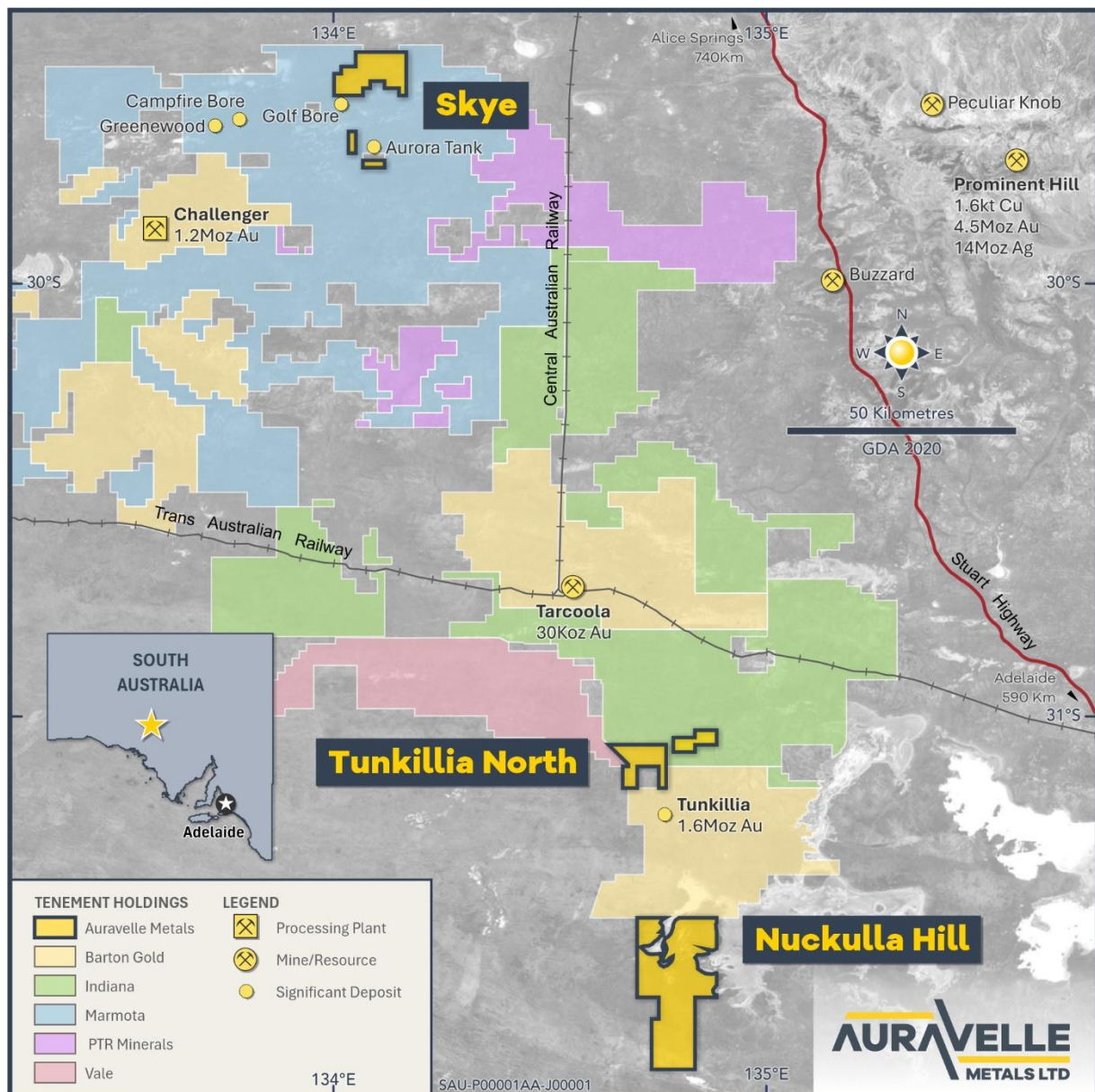
For personal use only

This announcement has been authorised for release by the Board of Auravelle Metals Limited.

**More Information:**

Investors/Corporate:  
 Andrew Muir, Managing Director  
 Auravelle Metals Limited  
 +61 (0) 8 9388 1551  
[reception@auravelle.com.au](mailto:reception@auravelle.com.au)

Media:  
 Nicholas Read  
 Read Corporate  
 +61 (0) 8 9388 1474  
[info@readcorporate.com.au](mailto:info@readcorporate.com.au)



**Figure 5: Auravelle’s South Australian Projects<sup>6</sup>**

<sup>6</sup> For Tarkoola current resources see <https://bartongold.com.au/projects/jorc-mineral-resources/>  
 For Challenger historical production see <https://bartongold.com.au/projects/challenger-gold-cgm/>  
 For Tunkillia resource see <https://bartongold.com.au/projects/jorc-mineral-resources/>  
 For Prominent Hill Resource, see <https://minedocs.com/23/OZMineralz-MRMR-6302022.pdf>, OZ Minerals Prominent Hill Minerals 2022 Minerals Resource Statement as at 30 June 2022

### Competent Person Statement

The information in this report that relates to Exploration Results is based on, and fairly represents, information and supporting documentation compiled by Ms Anna Price, a Member of the Australian Institute of Geoscientists. Ms Anna Price is a full-time employee of Auravelle Metals Limited who holds shares and options in the Company and has sufficient experience relevant to the styles of mineralisation and types of deposit under consideration and to the activities being undertaken to qualify as a Competent Person as defined in the 2012 Edition of the 'Australasian Code for Reporting of Exploration Results, Mineral Resources and Ore Reserves'. Ms Price consents to the inclusion in this report of the matters based on her information in the form and context in which they appear.

Auravelle confirms that it is not aware of any new information or data that materially affects the information included in the original market announcement. The Company confirms that the form and context in which the Competent Person's findings are presented have not been materially modified from the original market announcements.

### About Auravelle

Auravelle Metals Limited (ASX: AUV) is an Australian-based exploration company focused on driving value from its recent high-grade gold discoveries at Nuckulla Hill in the Gawler Craton in SA, and the Crown Project, located near Kalgoorlie in Western Australia.