

## Copper grows and Gold Resources doubled at Mumbezhi Project

### HIGHLIGHTS:

- **Accelerated Growth:** Updated Indicated & Inferred MRE delivers +20% tonnage (208 Mt at 0.42% Cu, 0.49% CuEq), including 106% increase in gold; 14% increase in copper.
- **Tier-1 Grade:** Mumbezhi copper grades are directly comparable to world-class operating mines in the Zambian Copperbelt, enhanced by a 0.49% CuEq poly-metallic grade.
- **New Satellite and By-Product Boost:** Includes shallow maiden copper MRE for West Mwombezhi and updated Nyungu Central MRE, inclusive of results from recent gold re-assaying.
- **High Confidence:** Approximately 35% of flagship Nyungu Central MRE is within the Indicated classification, delivering a robust foundation for near-term development studies.
- **Phase 3 Commenced:** Diamond drilling targeting further MRE expansion is now underway, initially focussed at the southern, shallower end of the flagship Nyungu Central deposit.
- **Key Regional Targets:** Aircore and RC drill testing of large-scale regional targets at Kamafamba, Sharamba, Chipimpa, West Mwombezhi and Chalamba has also commenced.

Prospect Resources Limited (ASX:PSC) (**Prospect**) is pleased to announce an updated Mineral Resource Estimate (**MRE**) for its Mumbezhi Copper Project (**Mumbezhi**) in north-west Zambia.

The MRE totals 208.1 million tonnes (**Mt**) at an average grade of 0.42% Cu (0.49% CuEq\*\*) across the Nyungu Central, Kabikupa and West Mwombezhi deposits (0.2% Cu cut-off).

Deposit	Tonnes (millions)*	Copper (Cu%)*	Cobalt (Co%)*	Au (g/t)*	Tonnes Contained Cu*	Tonnes Contained Co*	Ounces Contained Au*	Copper (CuEq%)**
Nyungu Central	154.4	0.42	0.03	0.05	651,300	39,500	242,800	0.51
Kabikupa	23.0	0.48	-	-	110,800	-	-	0.48
West Mwombezhi	30.7	0.37	0.01	0.02	115,000	4,000	19,300	0.40
<b>TOTAL</b>	<b>208.1</b>	<b>0.42</b>	<b>0.02</b>	<b>0.04</b>	<b>877,100</b>	<b>43,500</b>	<b>262,100</b>	<b>0.49</b>

\* Rounding has been applied

Deposit	Resource Classification	Tonnes (millions)*	Copper (Cu%)*	Cobalt (Co%)*	Au (g/t)*	Tonnes Contained Cu*	Tonnes Contained Co*	Ounces Contained Au*	Copper (CuEq%)**
Nyungu Central	Indicated	53.4	0.45	0.03	0.05	239,800	18,600	93,200	0.56
	Inferred	101.0	0.41	0.02	0.05	411,500	20,900	149,600	0.48
Kabikupa	Indicated	18.0	0.46	-	-	83,600	-	-	0.46
	Inferred	5.0	0.55	-	-	27,200	-	-	0.55
West Mwombezhi	Inferred	30.7	0.37	0.01	0.02	115,000	4,000	19,300	0.40
<b>TOTAL</b>		<b>208.1</b>	<b>0.42</b>	<b>0.02</b>	<b>0.04</b>	<b>877,100</b>	<b>43,500</b>	<b>262,100</b>	<b>0.49</b>

\* Rounding has been applied

\*\* For CuEq grade calculation methodology, refer to page 28 of this release

Key changes from the February 2026 MRE include:

- An updated Indicated and Inferred MRE for the Nyungu Central deposit (copper, cobalt and gold Mineral Resources); and
- A maiden Inferred MRE for the shallow, tabular West Mwombezhi deposit (holding 115kt contained copper), located approximately 13km north of Nyungu Central.

These two deposits, along with the Kabikupa deposit (unchanged MRE), remain open along strike and down-dip.

**Prospect’s Managing Director and CEO, Sam Hosack, commented:**

*“The large-scale potential of the Mumbezhi Copper Project continues to emerge rapidly. Total copper content is approaching 900kt, with 262,000 contained gold ounces, with all three defined deposits enjoying significant additional growth potential. When this current mineralised footprint is coupled with the magnitude of prospectivity presented by our regional targets drilling focus this year, one starts to get a picture of the broader opportunity that exists at Mumbezhi and why I am so excited.*

*“The material boost to gold content within the Nyungu Central MRE delivered from our recent gold re-assaying programme also means we will now routinely assay for gold moving forward. As we have previously highlighted, the by-product revenue potential at Mumbezhi, across both gold and cobalt, is material – delivering real opportunity to drive forecast operating costs down the global cost curve. We look forward to further defining the extent of this dynamic over the next 6-12 months.*

*“Finally, we are delighted to have our Phase 3 2026 drilling programme underway. This programme is initially focused on targeted extension of the Nyungu Central deposit in shallower up-dip positions to the south. It is then set to test the broader ‘Nyungu Hub’ potential (including Nyungu West and a key conductor northeast of the Nyungu South prospect), along with scout drilling of high-potential regional targets. These key regional targets include the large-scale Chipimpa and Sharamba EM conductor targets, which are both over 2km in strike and show a similar scale, shape and conductivity to the Nyungu Central deposit signature.”*

**Updated Mumbezhi Indicated & Inferred MRE (May 2026)**

The May 2026 MRE has been estimated in accordance with the JORC (2012) Code guidelines for reporting and is summarised in JORC Table 1 (Section 3), accompanying this release.

The MRE was completed by Mr Steve Rose (FAusIMM (CPGeo)), an independent expert, and the Competent Person as defined in the JORC (2012) Code, who is a full-time consultant with Rose Mining Geology Consultants (Perth, WA).

**Table 1: Mumbezhi Copper Project Mineral Resource at 0.2% Cu cut-off grade**

Deposit	Resource Classification	Tonnes (millions)*	Copper (Cu%)*	Cobalt (Co%)*	Au (g/t)*	Tonnes Contained Cu*	Tonnes Contained Co*	Ounces Contained Au*	Copper (CuEq%)**
Nyungu Central	Indicated	53.4	0.45	0.03	0.05	239,800	18,600	93,200	0.56
	Inferred	101.0	0.41	0.02	0.05	411,500	20,900	149,600	0.48
Kabikupa	Indicated	18.0	0.46	-	-	83,600	-	-	0.46
	Inferred	5.0	0.55	-	-	27,200	-	-	0.55
West Mwombezhi	Inferred	30.7	0.37	0.01	0.02	115,000	4,000	19,300	0.40
	<b>TOTAL</b>	<b>208.1</b>	<b>0.42</b>	<b>0.02</b>	<b>0.04</b>	<b>877,100</b>	<b>43,500</b>	<b>262,100</b>	<b>0.49</b>

\* Rounding has been applied

\*\* For CuEq grade calculation methodology, refer to page 28 of this release

## Gold Potential

A programme of geological re-logging of Nyungu Central drill core was completed at site during Q1 2026, with more than 2,800 existing copper drill hole intersections then re-assayed for gold, leading to an impressive uplift in total gold resources by 106% to 262,100 oz from the previous estimate.<sup>1</sup>

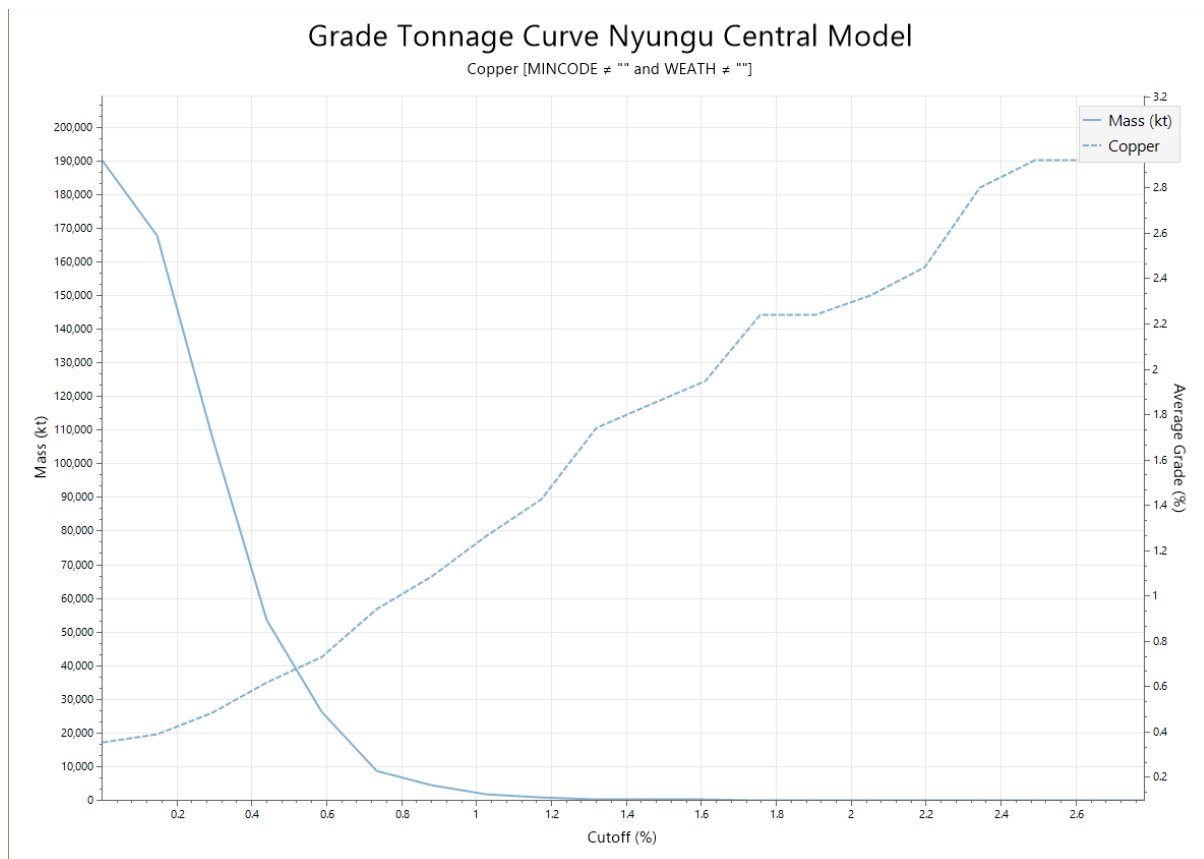
As a consequence of the success of this re-assaying programme, Prospect will now routinely assay for gold in all drilling intersections of defined copper mineralisation, for all deposits drilled during the current Phase 3 programmes.

## Grade-Tonnage Analysis

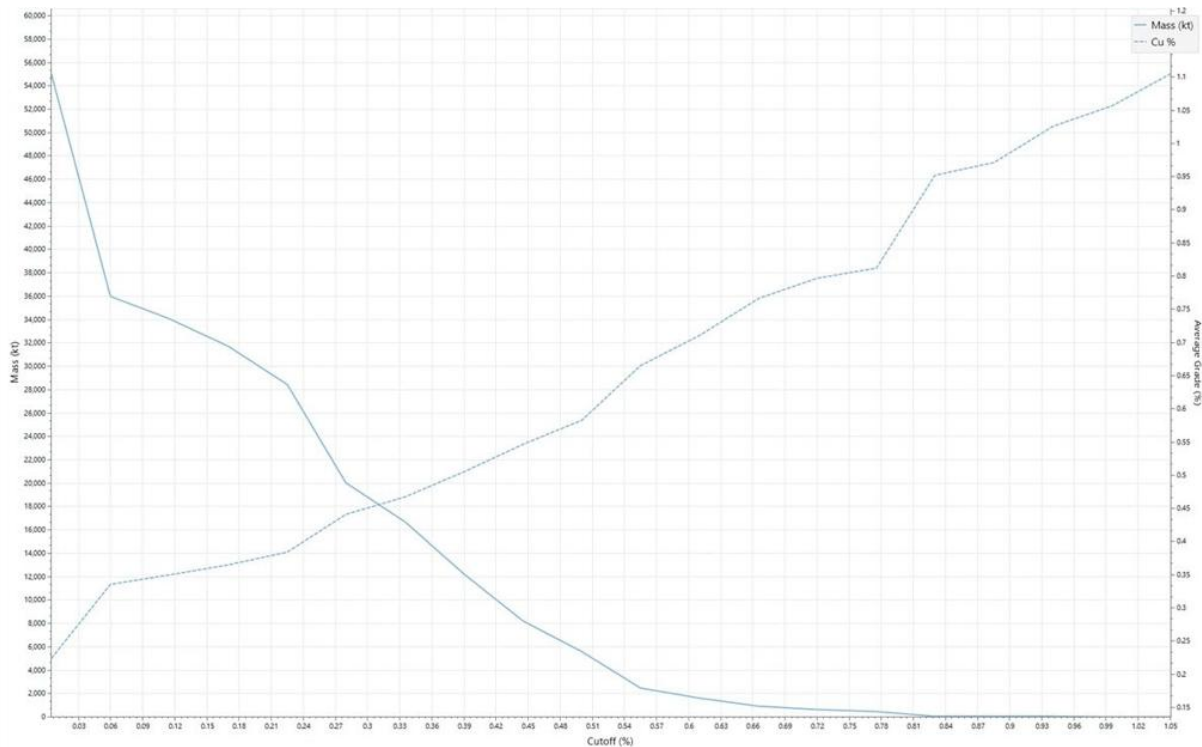
Grade-Tonnage curve analysis of the updated Nyungu Central and maiden West Mwombezhi copper MREs show the robustness of grade continuity with a reduction in tonnes and increase in copper grade with increasing cut-off, but with more inconsistent continuity as higher-grade cut-offs are applied.

Figure 1 shows the global Resource Grade-Tonnage relationship for the updated Nyungu Central MRE and Figure 2 shows the global Resource Grade-Tonnage relationship of the maiden West Mwombezhi MRE.

**Figure 1: Grade-Tonnage relationship of the updated Nyungu Central MRE**



<sup>1</sup> Refer to PSC ASX release dated 9 February 2026, *Updated Mumbeshi MRE Delivers 63% Increase in Copper Resources*



**Figure 2: Grade-Tonnage relationship of the maiden West Mwombezi MRE**

### Summary of Material Information Used to estimate the Mineral Resources

The following is a summary of the material information used to estimate the Mineral Resources, as required by Listing Rule 5.8.1 and JORC (2012) Code Reporting Guidelines.

### Mineral Tenement and Land Tenure Status

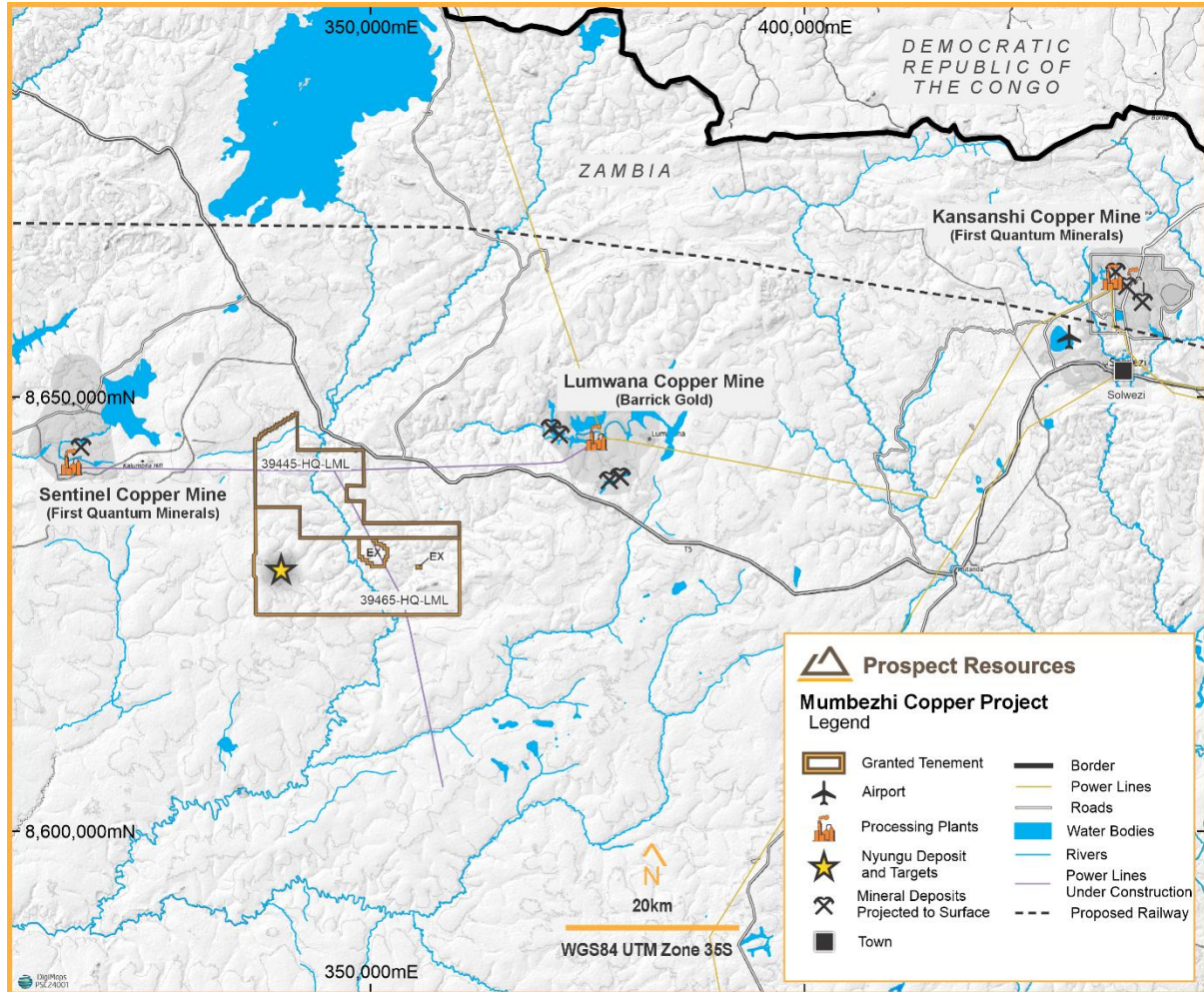
The Mumbeszi Copper Project is located in the northwest of Zambia, approximately 95km west southwest of the town of Solwezi, in the district of Lumwana.

The mineral tenements include two active Large Scale Mining Licences 39445-HQ-LML (Mumbeszi North) and 39465-HQ-LML (Mumbeszi South) totalling 356km<sup>2</sup>, which were granted by the MLC (Mining Licensing Committee), part of the Ministry of Mines and Mineral Development (MMD) in Zambia for 25 years each, on 31<sup>st</sup> March 2025 (see Table 2).

The Mining Licences have had an Environmental Social and Impact Assessment (ESIA) reviewed and approved by the Zambia Environmental Management Agency (ZEMA) under the various statutory Government Acts and all licences are in good standing with no known impediments.

**Table 2: Mumbezhi Copper Project Tenement Details**

Licence ID	Licence Type	Application Date	Granted Date	Expiry Date	Area (km <sup>2</sup> )
39445-HQ-LML	Mining	16 December 2024	31 March 2025	30 March 2050	137.59
39465-HQ-LML	Mining	18 December 2024	31 March 2025	30 March 2050	218.08

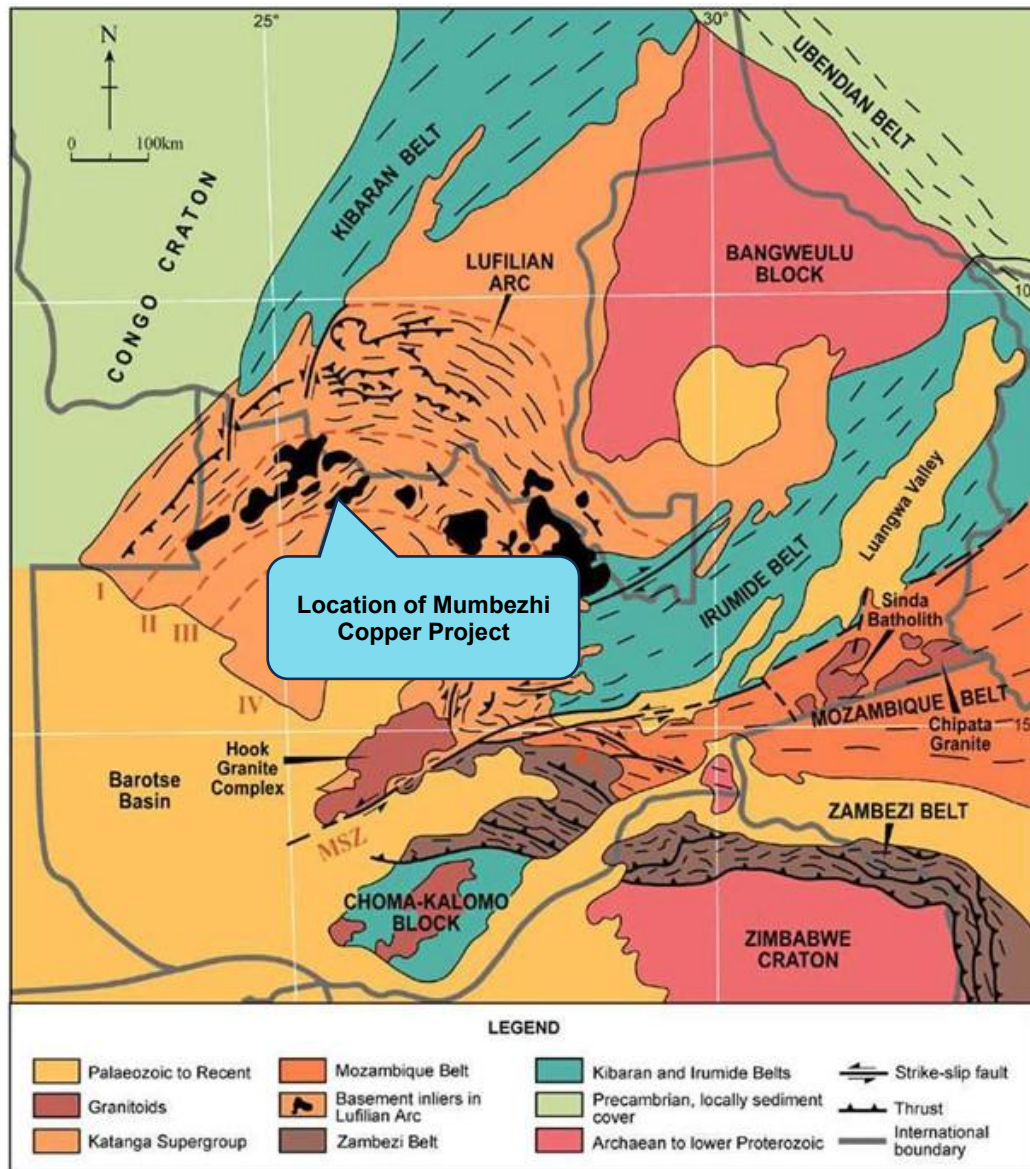


**Figure 3: Mumbezhi Copper Project Location Plan showing Mineral Licences**

The tenements are all 100% owned by Osprey Resources Limited, a Zambian based subsidiary of Prospect Resources Limited, who holds a 90% interest in Osprey Resources.

## Local Geology, Structure and Mineralisation

The regional geological setting of Mumbezhi Copper Project is shown below in Figure 4.



**Figure 4: Regional Geological Setting of the Mumbezhi Copper Project in Northwest Zambia (grid lines shown in Latitude and Longitude)**

The main copper deposits in the Lumwana district area of northwestern Zambia are hosted by schists to gneisses within the north-eastern lobe of the Mwombezhi Dome. The region is characterised by broadly north-directed thrusts and antiformal basement domes, surrounded by the Katangan Supergroup metasediments, which host both the Central African and Zambian Copper Belts and are major sources of global copper production.

The local stratigraphy is broadly based on the original basement-Katangan stratigraphy, but it has been overturned and modified by shearing, high grade metamorphism and thrusting.

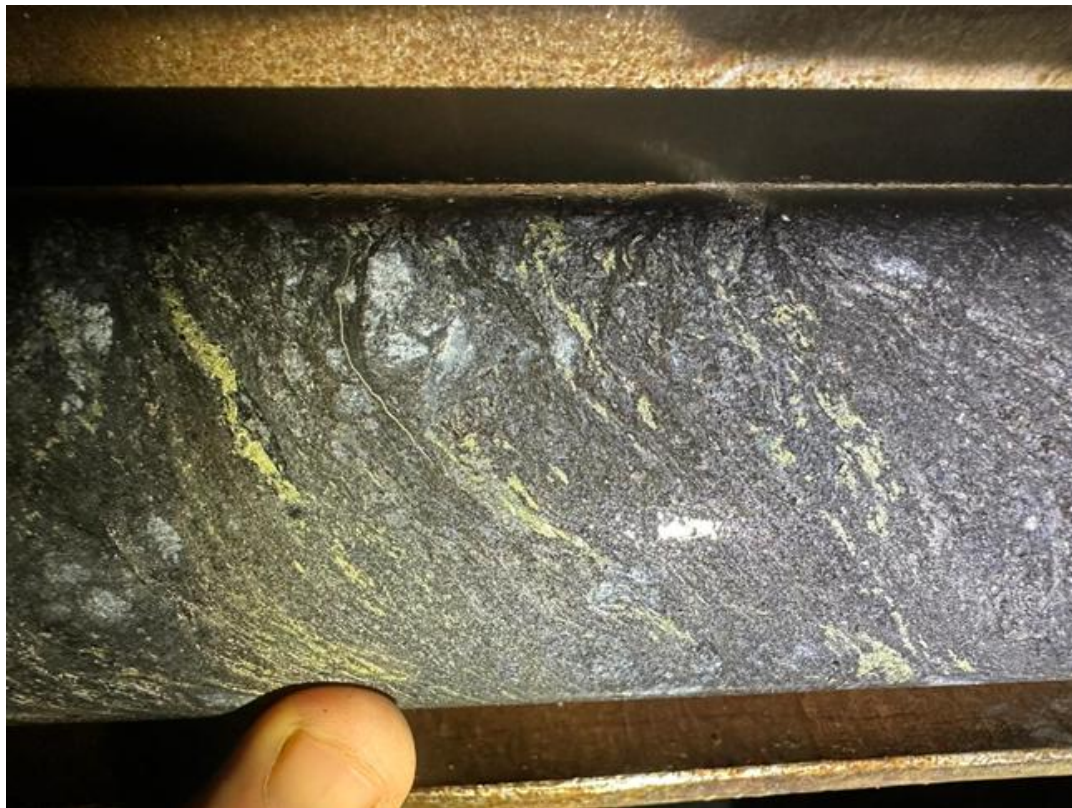
The host rocks at the Mumbezhi Project show contacts from unmineralised quartz-feldspar±phlogopite basement gneiss to a Cu ± Co mineralised quartz-phlogopite-muscovite-kyanite-sulphide "mineralised ore schist". Ore-rock relationships suggest the ore is the result of metasomatic alteration and mineralisation of foliated pre-Katangan basement although alternate

interpretations are that the ore is hosted by sheared and structurally interleaved, mineralised Katangan sedimentary rocks.

The Nyungu Central deposit represents a continuous, well-defined zone of copper mineralisation. The broad mineralised zones of economic interest range between structurally complex, folded geometry at Nyungu Central; to relatively simple, moderate east-dipping geometry at Nyungu South, 4km to the south southeast. The mineralisation boundaries are well-defined at both deposits. Drilling has confirmed the presence of mineralisation over a strike length of 1,700m at Nyungu Central (and 600m at Nyungu South).

The actual orebodies, hosted by the "mineralised ore schist," comprise high-grade metamorphosed, intensely mylonitised, recrystallised, muscovite-phlogopite-quartz-kyanite schists with disseminated sulphides (typically <5%), and dominated by chalcopyrite and bornite in fresh rock.

Weak Cu, Co and Au mineralisation is also found in the intervening gneiss units between stacked orebodies. The internal structure of the mineralised package has an intensely transposed foliation defined by layer-parallel alignment of both mica and quartz, and is attenuated and boudinaged in part, causing lensing along strike and down dip. The distribution of copper mineralisation is controlled by visibly identifiable strata-bound geology, within which copper grades are generally consistent (see Figure 5).



**Figure 5: High-grade copper mineralisation from Nyungu Central within the "ore schist"**

The shallow, tabular West Mwombezhi deposit is 13 km northeast of Nyungu Central and hosted within a banded, mica-rich biotite feldspathic gneiss host rock, with disseminated copper mineralisation present as both chalcopyrite and bornite, with sphalerite, pyrite and pyrrhotite present. The deposit is dated some 500 million years younger than Nyungu Central and genetically thought to be re-worked from the older deposit during intrusion of the granitic domal features.

## Supplied Data

Prospect Resources has collated and compiled a large dataset covering the Mumbezhi Copper Project and the main data utilised in the generation of the Mineral Resource estimates include:

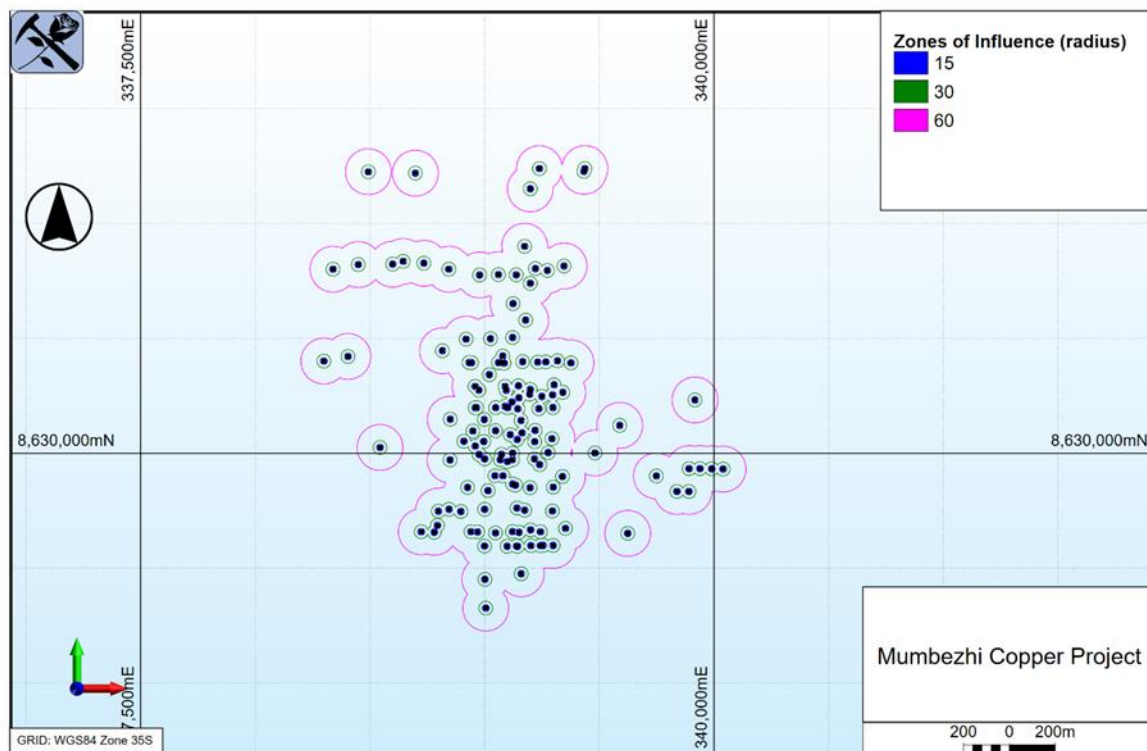
- Export of the drillhole database dated 9 May 2026
- Extensive archive of maps and reports
- Extensive archive of geophysical images
- Updated topographical surveys
- Working cross-sections and plans supplied by Prospect's geological teams

The drillhole data is stored in Prospect's GeoSpark™ 3D spatial database. Prospect spent considerable time validating and checking the historical drilling. All work is being carried out in UTM Grid WGS84\_Zone 35S.

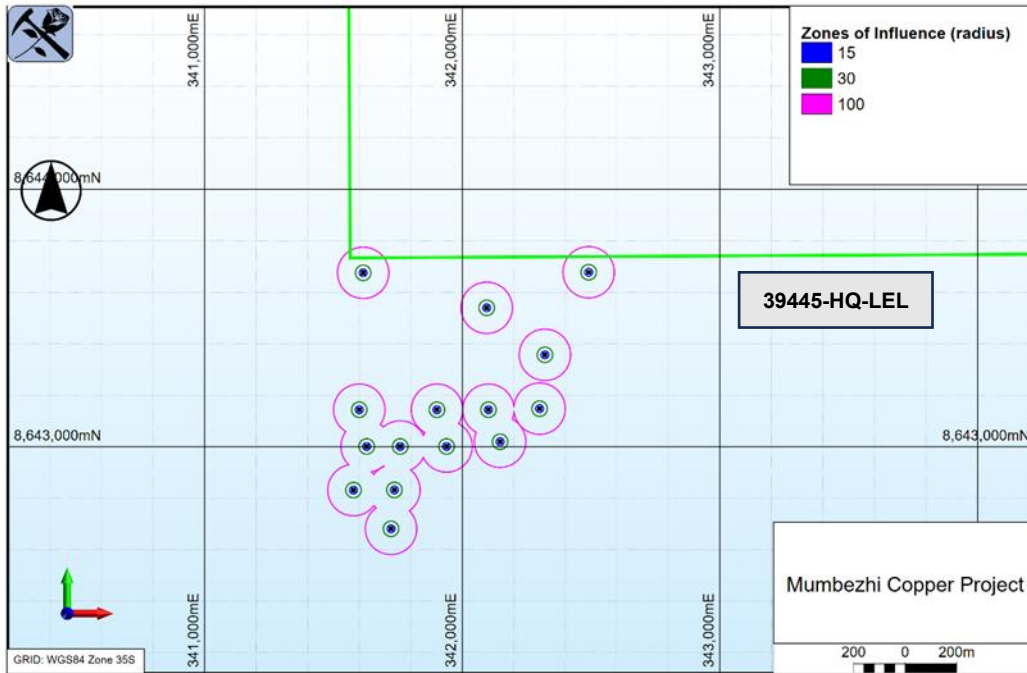
## Drilling Techniques and Drill Hole Spacing

Drill hole details (including drilling type) for the Mumbezhi Copper Project are tabulated in Appendix 1.

A review of sample spacing was carried out. This showed that the drill spacing could generally be determined as 30m to 120m at Nyungu Central and 100m to 200m at West Mwombezhi – extending out to 200-400m (see Figures 6-7).



**Figure 6: Plan showing zones of influence for Nyungu Central drilling – circles coloured by radius from drill collar**



**Figure 7: Plan showing zones of influence for West Mwombezhi drilling – circles coloured by radius from drill collar (only holes south of green line lie within 39445-HQ-LML)**

### Review and Validation of Data

All relevant data was initially imported into Micromine software for viewing and validation.

The drill holes were incorporated into a Micromine drill database file called MUMBEZHI\_2026.DHDB, and a separate subset database named MwombezhiWest.DHDB was utilised for the West Mwombezhi MRE. The drilling databases are summarised in Table 3 and Table 4.

Note – the Indicated & Inferred Kabikupa MRE is not being updated from that reported by Prospect in ASX Announcement from 9 February 2026, *Updated Mumbezhi MRE Delivers 63% Increase In Copper Resources*.

The topographical file “*topography*” was used as the topography surface for Nyungu Central (and Nyungu South), provided by Prospect Resources.

The topographical file “*Nyungawest\_lidar\_0\_2\_contourEXPANDED.dxf*” was used as the topography surface for West Mwombezhi, provided by Prospect.

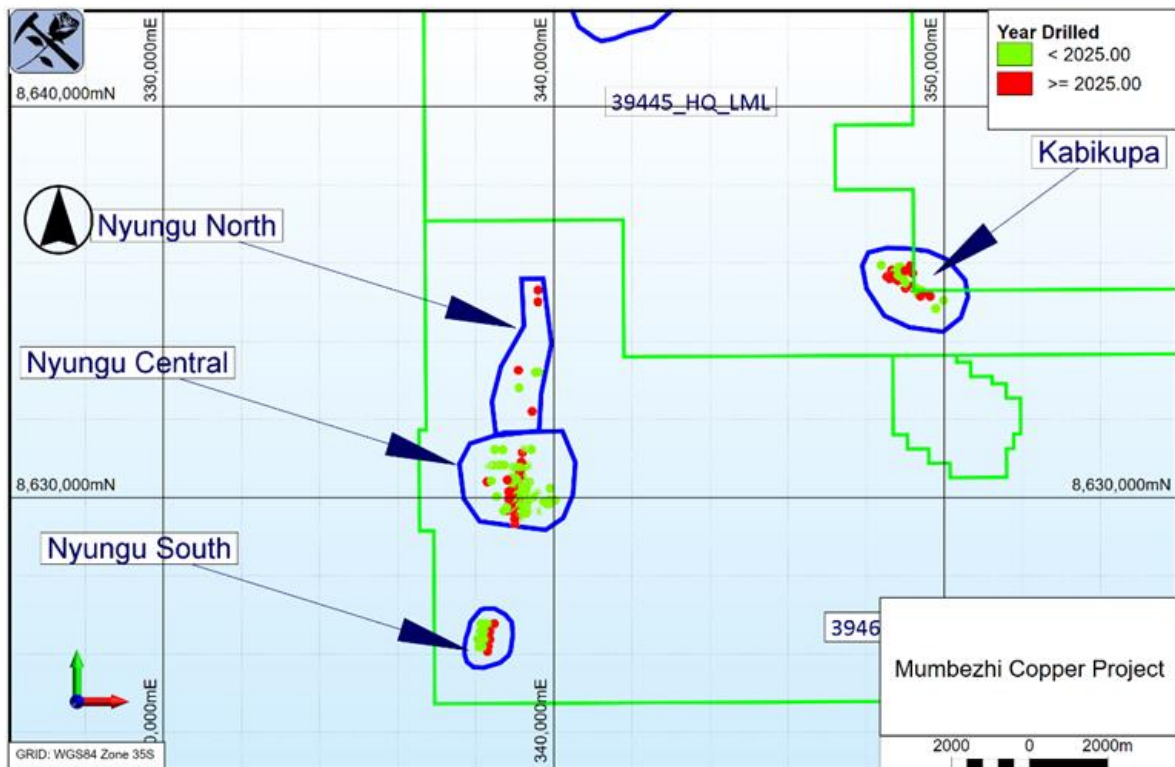
The collar plot of the Nyungu drill holes are shown in Figure 8 and the collar plot of the West Mwombezhi drill holes are shown in Figure 9.

**Table 3: Mumbezhi Copper Project drill hole data set used for updated Nyungu Central MRE**

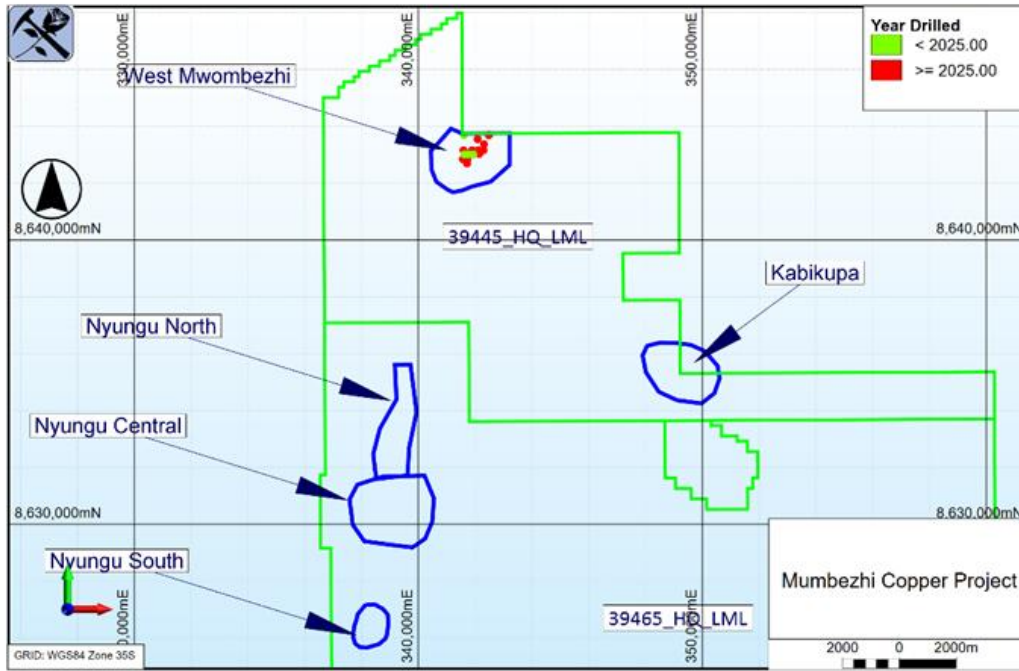
PROSPECT NAME	Hole_Type	Metres	Number of Holes
Nyungu Central	DD	15,658	49
	RC	4,829	30
	RD	11,226	55
	<b>Subtotal</b>	<b>31,713</b>	<b>134</b>
<b>Total</b>		<b>31,713</b>	<b>134</b>

**Table 4: Mumbezhi Copper Project drill hole data set used for West Mwombezhi MRE**

PROSPECT NAME	Hole Type	Metres	Number of Holes
West Mwombezhi	DD	3,258	15



**Figure 8: Plan of Nyungu Central drill collars in the database used in the updated MRE**



**Figure 9: Plan of West Mwombezhi drill collars in the database used in the maiden MRE**

29 holes have been ignored for the updated Nyungu Central MRE, out of a total dataset of 162. The holes that have been ignored are set out in Table 5 below, along with the reasons for exclusion from the estimate. The doubtful assays are mainly to do with only the significant intercept or composite value being available in the database. The data has been used to guide interpretation, but ignored for estimation.

All existing drill hole data has been utilised for the maiden West Mwombezhi MRE, although only that portion of the maiden Inferred Mineral Resource inside the Mining Licence 39445-HQ-LML has been reported.

**Table 5: List of holes ignored for the updated estimate (Prospect NC means Nyungu Central. Hole Type DD means diamond drillhole; RC means reverse circulation drillhole)**

Prospect	Hole Type	Year	Hole Number	Hole length	Comment
NC	DD	1999	MM295	303	Doubtful assays in historic hole
NC	DD	1999	MM296	552	Doubtful assays in historic hole
NC	DD	2012	NYU1	300	Doubtful assays in historic hole
NC	DD	2012	NYU2	350	Doubtful assays in historic hole
NC	DD	2014	NYDD047	300	Doubtful assays in historic hole
NC	DD	2014	NYDD050	264	Doubtful assays in historic hole
NC	DD	2025	NCMT001	242	Selective sampling for metallurgical purposes
NC	RC	1999	MBD00RC001	228	Doubtful assays in historic hole
NC	RC	1999	MBD00RC002	180	Doubtful assays in historic hole

NC	RC	1999	MBD00RC003	200	Doubtful assays in historic hole
NC	RC	1999	MBD00RC004	252	Doubtful assays in historic hole
NC	RC	1999	MBD00RC005	200	Doubtful assays in historic hole
NC	RC	1999	MBD00RC006	156	Doubtful assays in historic hole
NC	RC	1999	MBD00RC007	234	Doubtful assays in historic hole
NC	RC	1999	MBD00RC008	196	Doubtful assays in historic hole
NC	RC	1999	MBD00RC009	150	Doubtful assays in historic hole
NC	RC	1999	MBD00RC010	125	Doubtful assays in historic hole
NC	RC	1999	MBD00RC011	100	Doubtful assays in historic hole
NC	RC	1999	MBD01RC001	228	Doubtful assays in historic hole
NC	RC	1999	MBD01RC002	200	Doubtful assays in historic hole
NC	RC	1999	MBD01RC003	195	Doubtful assays in historic hole
NC	RC	1999	MBD01RC004	252	Doubtful assays in historic hole
NC	RC	1999	MBD01RC005	270	Doubtful assays in historic hole
NC	RC	1999	MBD01RC006	200	Doubtful assays in historic hole
NC	RC	1999	MBD01RC007	200	Doubtful assays in historic hole
NC	RC	1999	MBD01RC008	130	Doubtful assays in historic hole
NC	RC	1999	MBD01RC009	220	Doubtful assays in historic hole
NC	RC	2012	NYRC031	117	Doubtful assays in historic hole
NC	RC	2024	NCRD019R	20	Hole abandoned; not assayed
<b>Total</b>			<b>29</b>	<b>6,364</b>	

### Drill Hole Surveys

Collars plot correctly on the topographic surface. All collar surveys are in UTM WGS84\_Zone 35S grid. Details on the downhole survey data are listed below:

- Drill holes from before 2014 were surveyed by an EMS multishot camera.
- Drill holes between 2014 and 2024 were surveyed with Reflex Ezishot EMS instrument.
- Drill holes from 2024 and afterwards have been surveyed by an INS downhole gyroscopic tool.

### Bulk Density

Density measurements were taken from diamond drill core (using the mass in water method), and by down hole survey of RC holes. The density values were domain based on geology and weathering, to give average values for each domain. For the Nyungu Central MRE updated the following bulk density values were used:

- 1.80 g/cm<sup>3</sup> for overburden;
- 2.47 g/cm<sup>3</sup> for oxide;
- 2.80 g/cm<sup>3</sup> for transition; and
- 2.83 g/cm<sup>3</sup> for fresh.

There are currently insufficient bulk density samples available from West Mwombezi to estimate reliable values at this stage, however, as current Inferred Mineral Resources lie within largely fresh rock, Prospect has used a default value of 2.80 g/cm<sup>3</sup> for the entire MRE.

### **Project Site Visit**

The Company's Competent Person for reporting of Mineral Resources and Exploration Targets, Mr Steve Rose (Rose Mining Geology, Perth, Australia), visited the Mumbezi Project site during May 2025 to review QAQC, site, software data storage and laboratory protocols used by Prospect at Mumbezi. Mr Rose saw drilling in progress, the core logging facilities, and visited the SGS and ALS assay laboratories in Kalulushi and Kitwe respectively. Mr Rose indicated that he was satisfied that Prospect Resources were aligned with industry standard practices at the Project, and in some areas working at best practice.

Mr Rose had previously visited Zambia many times during the 1990s, including the Mumbezi Copper Project area, when carrying out exploration for ZamAnglo and Equinox Resources. Subsequently, he visited Kansanshi Copper Mine several times when consulting to FQM during 2010. This has provided him with the geological experience and background to understand the differing complex geology and mineralisation styles present at the Mumbezi Copper Project.

### **Geological and Mineralisation Interpretation**

With drilling and topography surface loaded into Micromine, the first step was to model the solid geology.

#### **Weathering Surfaces**

Weathering surfaces were interpreted for the Nyungu Central prospect. The surfaces were interpreted in Micromine as strings, and then converted to 3D wireframes.

Surfaces were created for base of complete oxidation ("BOCO") and top of fresh rock ("TOFR"). For West Mwombezi, drilling density is currently quite widely spaced, so it was not possible to define coherent weathering surfaces at this stage.

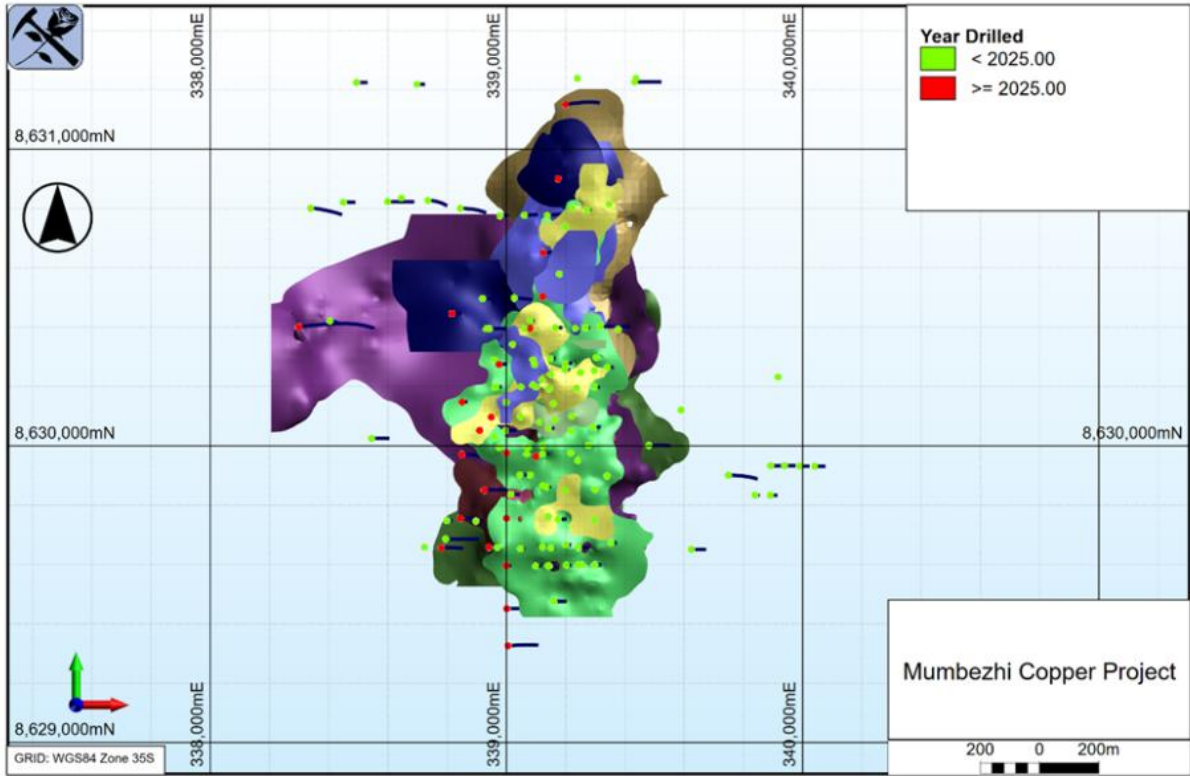
#### **Geology Model**

A geology model incorporating faults, cover rocks, and bedrock lithologies was developed from the logged lithology and structures for Nyungu Central. This was interpreted in Leapfrog and Micromine software. The geology model for West Mwombezi is largely interpretive at this stage, owing to widely spaced nature of the drilling at present.

#### **Mineralisation Model**

Copper mineralisation was modelled using implicit vein tools within Micromine for the Nyungu Central deposit (see Figures 10-13). Mineralisation was split based on the weathering domain, with mineralisation interpreted as being basically flat in oxide and transition domains, whereas in fresh domains the mineralisation was interpreted to reflect lithology and foliation.

For West Mwombezi, copper mineralisation was modelled using conventional strings and associated 3D wireframes, with two wireframes defined at present.



**Figure 10: Plan view showing mineralisation wireframes for Nyungu Central prospect**

For personal use only

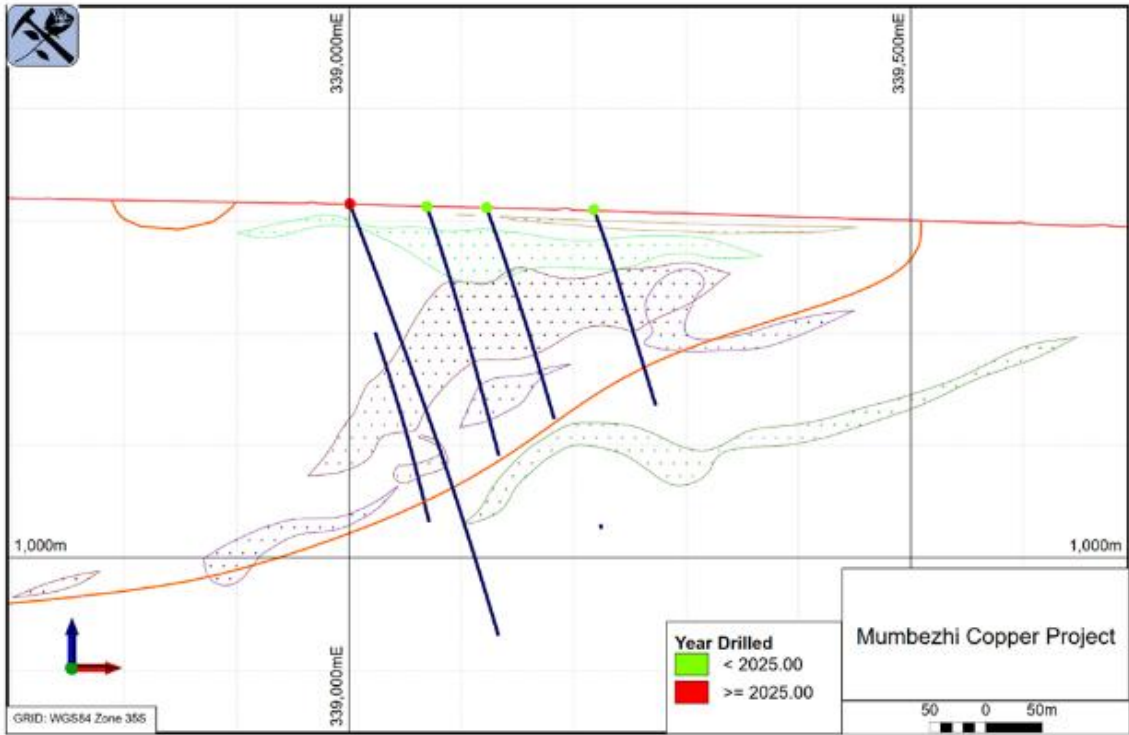


Figure 11: Drilling cross section showing mineralised wireframes for Nyungu Central at 8629980mN

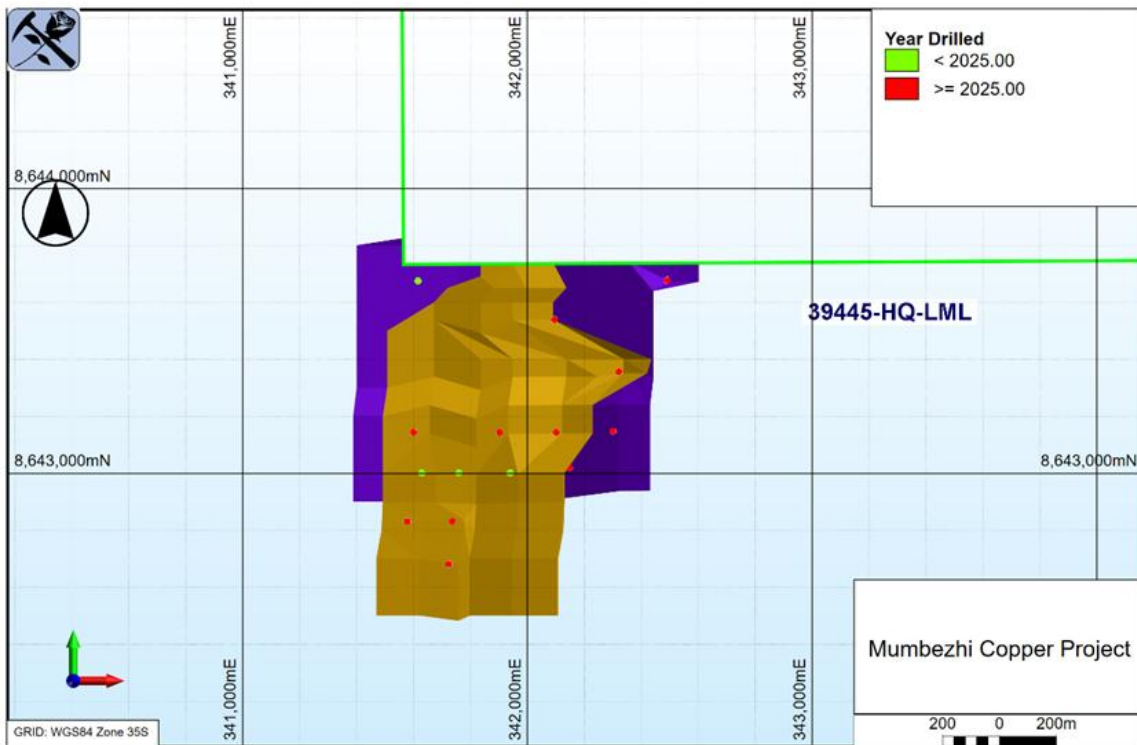
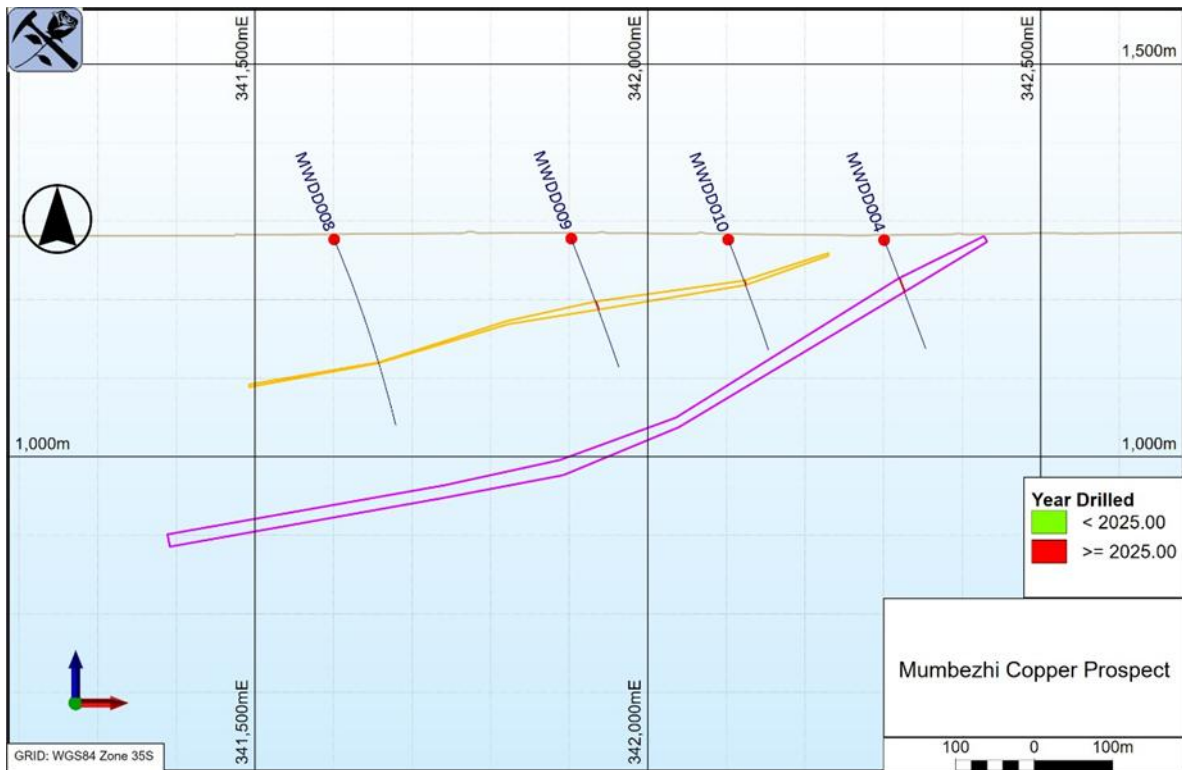


Figure 12: Plan view showing current mineralised wireframes for West Mwombezhi

For personal use only



**Figure 13: Cross-section at 8643165mN showing shallow tabular copper mineralisation for West Mwombezi**

## Technical Data Review

### QAQC Analysis

QAQC has been documented for post 2014 drilling. The QAQC procedure has involved the use of Certified Reference Materials (CRM's), blanks and field duplicates.

- For every 100 samples, 4 standards, 3 field duplicates and 2 blanks are inserted;
- In each hole insert 1 standard, 1 field duplicate and 1 blank
- A selection of CRM's is available to the geologists and insertion points are predetermined prior to drilling.
- 1m field duplicates RC samples are collected using a riffle splitter.

The results are stored in the drill hole database. They are assessed as the results are returned from the assay laboratory. No material issues have been found with the drill hole sampling.

### Domaining

The assay file was flagged with the relevant geology, mineralisation, and weathering codes for Nyungu Central and mineralisation codes for West Mwombezi. Gaps in the downhole sequence were rectified with the missing interval function in Micromine.

The assigned background values are shown in Table 6 and used for both the updated Nyungu Central MRE and maiden West Mwombezi MRE.

**Table 6: Background values assigned to missing or unassayed intervals**

Background value applied to missing or unassayed intervals	Field
0.005	Au Plot (ppm)
0.005	Co Plot (%)
0.0005	Cu Plot (%)

### Basic Statistics

Statistical analysis was carried out on samples to determine a suitable cut-off grade for modelling of the mineralisation.

Statistical analysis was carried out on samples within the mineralisation wireframes, grouped by weathering and by lithology.

The samples showed a high enough Coefficient of Variation to investigate the need for top-cutting. Plots were generated in Micromine based on weathering, lithological and mineralisation domain based mainly on percentile (95%), and the probability plots. No top-cuts were deemed necessary for West Mwombezhi samples.

**Table 7: Summary of top-cuts used for Nyungu Central by mineralisation/weathering domain. Top cut of 10,000 means no top cut is applied**

Weathering Domain	INPUT FIELD	OUTPUT FIELD	TOPCUT
OXIDE	AU_PLOT_PPM	AUCUT	10000
OXIDE	CO_PLOT_PC	COCUT	10000
OXIDE	CU_PLOT_PC	CUCUT	10000
TRANS	AU_PLOT_PPM	AUCUT	10000
TRANS	CO_PLOT_PC	COCUT	10000
TRANS	CU_PLOT_PC	CUCUT	1.8
FR	AU_PLOT_PPM	AUCUT	0.6
FR	CO_PLOT_PC	COCUT	0.46
FR	CU_PLOT_PC	CUCUT	5

### Geostatistics

Geostatistical analysis was carried out on the 1m composite assay files to generate variograms for the various mineralisation and weathering domains at Nyungu Central, to allow estimation of copper grades using Ordinary Kriging (OK). Inverse Distance (IDW) estimation method was used for copper, as a check estimate. Gold and cobalt were estimated with Inverse Distance because of difficulties in plotting reliable variograms.

At West Mwombezhi, Inverse Distance was used for all three metals because of difficulty in plotting useful variograms with the limited data available. Micromine software was used for this analysis.

Analysis was carried out to test for proportional effect. This showed that it was present, and so relative variograms were used for the updated Nyungu Central copper estimation.

### **Block Modelling**

Separate blank block models were created using Micromine for both Nyungu Central and West Mwombezhi. This process and the subsequent estimation processes were controlled by a macro to ensure the process could be repeated, with the variables stored in forms.

Parent block sizes for the Nyungu MRE model was 10mE x 10mN x 5mRL and for West Mwombezhi was 25mE x 25mN x 5mRL.

Weathering and lithology codes were assigned to the block models using the geology model wireframes for Nyungu Central. Mineralisation codes only, were assigned to West Mwombezhi as outlined above. Sub-blocking to 1m was applied to both the Nyungu Central and West Mwombezhi models, to ensure block model volume reflected the source wireframes.

The Mineral Resource estimation workflow was as follows:

1. Create a blank block model.
2. Assign geology domains to model (Nyungu Central only).
3. Assign weathering domains to model (Nyungu Central only).
4. Assign AIR or BEDROCK based on topography.
5. Assign various mineralisation codes.
6. Assign global density values.
7. Update weathering flagging to fix areas where only a few blocks are coded (Nyungu Central only).
8. Estimate mineralisation domains using Inverse Distance Weighting (IDW) in three passes for Nyungu Central and West Mwombezhi. Estimate copper, gold and cobalt (the last two only for Nyungu Central).
9. Estimate mineralisation domains using Ordinary Kriging (OK) in three passes. Estimate copper only for Nyungu Central.
10. Apply classification and clean up model.
11. Report the models' outputs

### **Block Model Estimation**

Micromine Version 2026 was used for the Mineral Resource estimations. Estimation was run in three passes, with progressively larger search radius being applied. A code of 1, 2 or 3 was written to the field PASS.

Grades were estimated into the model using the relevant value from the composite file. Only composites from within the mineralisation wireframe were used to estimate blocks within the wireframe. Estimation was carried out using an anisotropic search ellipse.

### **Resource Model Validation**

The Resource models were taken through the following validation steps once estimation was completed:

- Volume comparison with the mineralisation;
- Comparison with composite grades;
- Visual checking;

- Checking for blocks that were empty; and
- Swath plots in various XYZ dimensions.

### Mineral Resource Classification

Classification is based on:

- Drill spacing;
- Kriging variables (kriging efficiency and kriging variance for Nyungu Central only); and
- Estimation pass block filling.

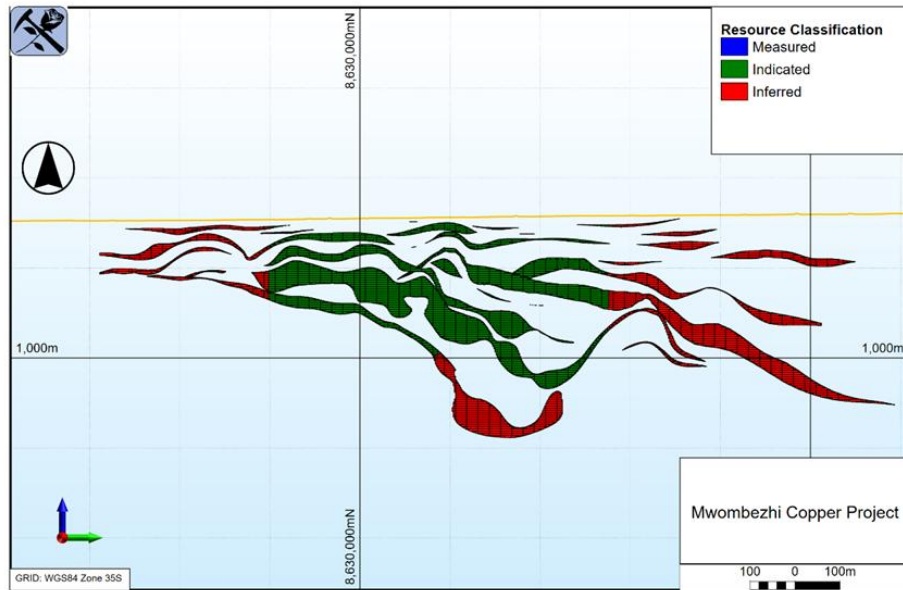
Nyungu Central has been classified into Indicated and Inferred Mineral Resource estimates, whilst West Mwombezhi has been classified as an Inferred Mineral Resourced estimate.

### Reasonable Prospects for Eventual Economic Extraction

Clause 20 of the JORC 2012 Reporting Code states that a Mineral Resource must have reasonable prospects for eventual economic extraction (RPEEE) (Joint Ore Reserves Committee, 2012). In applying this Clause, Rose Mining Geology Consultants has considered:

- The Mumbeszi Copper Project is within 60km of the existing copper processing plants at Sentinel and Lumwana;
- The Project sits on two 25-year granted mining licences;
- The copper grades are reported above a sensible cut-off grade;
- The deposits are geologically similar to those currently being mined at Lumwana and have similar copper grades;
- Metallurgical testing on transition and fresh mineralised composites from Nyungu Central has shown that a copper concentrate can be recovered at economic grades.
- West Mwombezhi contains similar copper sulphide mineralisation to Kabikupa, with the latter showing that a copper concentrate can be recovered at economic grades.

Figure 14 shows the classified blocks for Nyungu Central, whilst the West Mwombezhi Mineral Resources are all classified as Inferred category using the JORC (2012) Code.



**Figure 14: Long section projection of Nyungu Central Resource block model coloured by classification (looking west)**

## Summary and Reporting

Summaries of Mineral Resource estimates for Nyungu Central and West Mwombezhi are shown in Tables 8-9. 90% of the Nyungu Central resources report as fresh, whilst 100% of West Mwombezhi resources report as fresh.

**Table 8: Nyungu Central Mineral Resource estimate using 0.2% Cu cut-off and classified using JORC2012**

CLASSIFICATION	WEATHERING	CUT-OFF (%)	Mass (000,000's) (t)	Copper OK Grade (%)	Gold IDW Grade (g/t)	Cobalt IDW Grade (%)	Copper OK Mass (t)	Gold IDW Mass (oz)	Cobalt IDW Mass (t)
INDICATED	OX	>0.2% Cu	0.4	0.25	0.02	0.03	1,000	200	100
	TR	>0.2% Cu	8.7	0.46	0.08	0.04	39,500	22,000	3,800
	FR	>0.2% Cu	44.3	0.45	0.05	0.03	199,300	71,000	14,700
Subtotal			53.4	0.45	0.05	0.03	239,800	93,200	18,600
INFERRED	OX	>0.2% Cu	1.2	0.31	0.02	0.02	3,700	900	200
	TR	>0.2% Cu	5.7	0.40	0.03	0.01	22,900	6,000	800
	FR	>0.2% Cu	94.1	0.41	0.05	0.02	384,900	142,700	19,900
Subtotal			101	0.41	0.05	0.02	411,500	149,600	20,900
Total			154.4	0.42	0.05	0.03	651,300	242,800	39,500

*Differences may occur in totals due to rounding.*

**Table 9: West Mwombezhi Inferred Mineral Resource estimate using 0.2% Cu cut-off and classified using JORC2012**

Classification	CUT-OFF (%)	Mass (000,000's) (t)	Copper IDW Grade (%)	Gold IDW Grade (g/t)	Cobalt IDW Grade (%)	Copper IDW Mass (t)	Gold IDW Mass (oz)	Cobalt IDW Mass (t)
Inferred	>0.2% Cu	30.7	0.37	0.02	0.01	115,000	19,300	4,000
Total		30.7	0.37	0.02	0.01	115,000	19,300	4,000

*Differences may occur in totals due to rounding.*

## Comparison with Previous Estimates

Comparison made with February 2026 Indicated and Inferred MRE for Mumbezhi Copper Project.

Table 10 show comparison between the current Mineral Resource estimate (MRE) and the previous estimates for the Mumbezhi Copper Project. It shows that there has been an increase of 20% more tonnes and 14% more contained copper tonnes since the last estimate in February 2026.

There have been no previous estimates completed for West Mwombezhi and the Kabikupa MRE has not been updated since February 2026.

**Table 10: Comparison between current and previous Nyungu Central Mineral Resource estimates (including maiden West Mwombezhi and unchanged Kabikupa MRE's) using 0.2% Cu cut-off and classified using JORC2012**

PROSPECT	CLASSIFICATION	February 2026			May 2026			% Difference		
		Indicated	Inferred	Total	Indicated	Inferred	Total	Indicated	Inferred	Total
Nyungu Central	Mass (Mt)	53.8	97.0	150.8	53.4	101.0	154.4	-1%	4%	2%
	Copper Grade (%)	0.45	0.43	0.44	0.45	0.41	0.42	0%	-5%	-5%
	Copper Mass (t)	243,100	418,000	661,100	239,800	411,500	651,300	-1%	-2%	-1%
Kabikupa	Mass (Mt)	18.0	5.0	23.0	18.0	5.0	23.0	0%	0%	0%
	Copper Grade (%)	0.46	0.55	0.48	0.46	0.55	0.48	0%	0%	0%
	Copper Mass (t)	83,600	27,200	110,800	83,600	27,200	110,800	0%	0%	0%
West Mwombezhi	Mass (Mt)					30.7	30.7			
	Copper Grade (%)					0.37	0.37			
	Copper Mass (t)					115,000	115,000			
Total	Mass (Mt)	71.8	102.0	173.8	71.4	136.7	208.1	-1%	34%	20%
	Copper Grade (%)	0.46	0.44	0.44	0.45	0.41	0.42	0%	-7%	-5%
	Copper Mass (t)	326,700	445,200	771,900	323,400	553,700	877,100	-1%	24%	14%

## Upside Potential

Both the Nyungu Central and West Mwombezhi deposits remain open along strike and on defined plunges of the copper mineralisation.

## Conclusions

The total Mineral Resources for Nyungu Central, West Mwombezhi and Kabikupa are set out in Table 1. The combined Indicated and Inferred Mineral Resources (including Kabikupa) are estimated to be **208.1 Mt** at **0.42% Cu**, **0.02% Co**, **0.04g/t Au** for **877.1 kt** copper, **262,100 oz** of gold and **43.5 kt** of cobalt.

## Ongoing Technical Studies

- Continue open pit optimisation engineering works and scoping economic studies for Nyungu Central, Kabikupa and West Mwombezhi before carrying out further extensive drilling;
- Begin metallurgical test work to establish recovery information for West Mwombezhi;
- Continue re-assaying of gold in all new copper intersections delineated during the Phase 3 drilling programmes across the Mumbezhi Project during 2026, to increase confidence in the sample support for future Mineral Resource updates, with the aim of significantly growing the gold inventory of the overall Project; and

- Progress metallurgical test work on indicative gold and cobalt recoveries from the fresh, transition and oxide domains at Nyungu Central, to confirm metallurgical performance and production of a copper concentrate with economic by-product gold credits.

### Phase 3 Mumbezhi exploration and drilling programme

The Phase 3 2026 exploration and drilling programme for Mumbezhi commenced in early May, with an aggressive regional growth targets focus.

Key focus areas for this field season include:

- **'Nyungu Hub' growth.** Mineral Resource extension drilling adjacent to the shallower, southern up-dip areas of the Nyungu Central deposit, an initial focus on the Nyungu West area (located approx. 1.5km to the west of Nyungu Central) and targeting of a well-defined airborne geophysical conductor northeast of the Nyungu South prospect (see Figure 15 for locations).
- **Key regional targets.** Geophysical IP surveying coupled with shallow aircore and RC drill testing of regional targets at Kamafamba, Sharamba, Chipimpa, West Mwombezhi and Chalamba, plus follow-up diamond drilling of key upgraded targets.
- **Technical workstreams.** Continued technical studies in support of completion of an initial Scoping Study targeted in Q4 2026, with a strong emphasis on further metallurgical test work for copper, gold and cobalt at Nyungu Central and copper at Kabikupa.

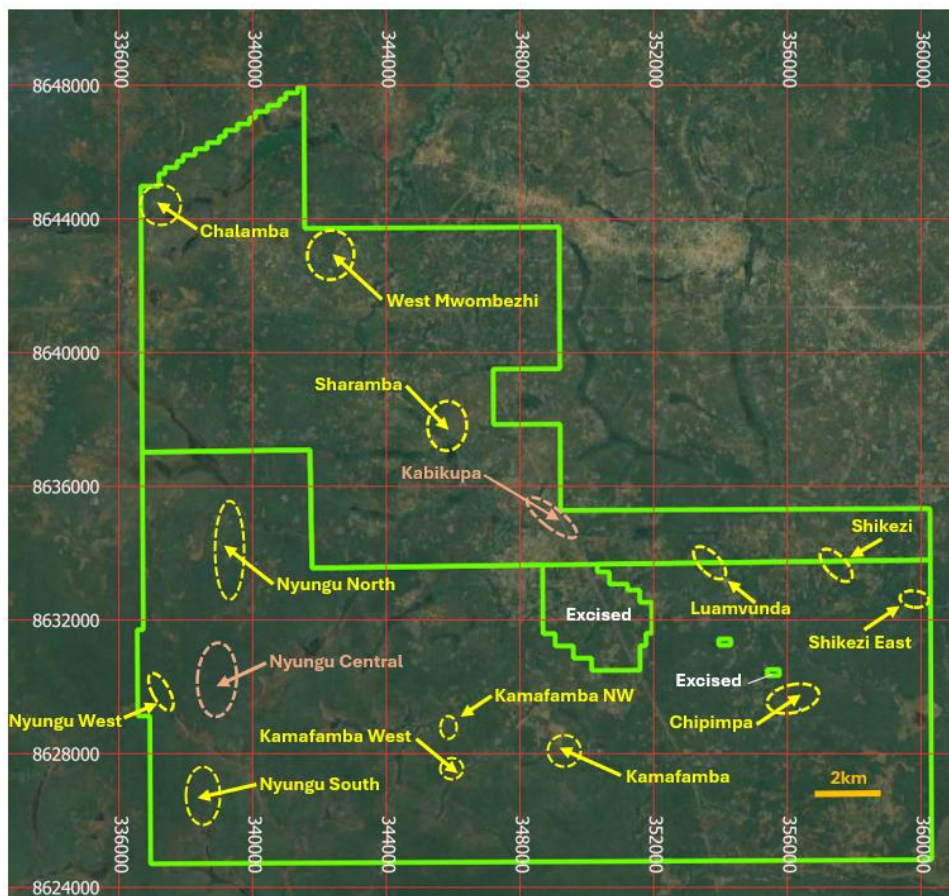


Figure 15. Mumbezhi Mining Licences showing location of current prospects

*This release was authorised by Sam Hosack, CEO and Managing Director.*

For further information, please contact:

**Sam Hosack**  
Managing Director  
[shosack@prospectresources.com.au](mailto:shosack@prospectresources.com.au)

**Ian Goldberg**  
Executive Director - Financial  
[igoldberg@prospectresources.com.au](mailto:igoldberg@prospectresources.com.au)

### **Competent Person's Statement**

The information in this announcement that relates to the Mumbhezhi Project Exploration Results, is based on information compiled by Mr Roger Tyler, a Competent Person who is a Member of The Australasian Institute of Mining and Metallurgy (MAusIMM) and The South African Institute of Mining and Metallurgy. Mr Tyler is the Company's Chief Geologist. Mr Tyler has sufficient experience relevant to the style of mineralisation and type of deposit under consideration and to the activity he is undertaking to qualify as a Competent Person (CP) as defined in the 2012 Edition of the "Australasian Code for Reporting of Exploration Results, Mineral Resources and Ore Reserves". Mr Tyler consents to the inclusion in the report of the matters based on his information in the form and context in which it appears.

The information in this report that relates to the Mumbhezhi Project Mineral Resources and Exploration Targets is based on information compiled by Mr Steve Rose, a Competent Person who is a Fellow of The Australasian Institute of Mining and Metallurgy (FAusIMM (CPGeo)). Steve Rose is a full-time consultant with Rose Mining Geology Consultants. Mr Rose has sufficient experience that is relevant to the style of mineralisation and type of deposit under consideration and to the activity being undertaken to qualify as a Competent Person as defined in the 2012 Edition of the 'Australasian Code for Reporting of Exploration Results, Mineral Resources and Ore Reserves'. Mr Rose consents to the inclusion in the report of the matters based on his information in the form and context in which it appears.

The information in this announcement that relates to the Mumbhezhi Copper Project metallurgical testing, is based on information compiled by Mr John Maketo, a Competent Person who is a Member of The Australasian Institute of Mining and Metallurgy (MAusIMM). Mr Maketo has sufficient experience relevant to the style of mineralisation and type of deposit under consideration and to the activity he is undertaking to qualify as a Competent Person (CP) as defined in the 2012 Edition of the "Australasian Code for Reporting of Exploration Results, Mineral Resources and Ore Reserves". Mr Maketo consents to the inclusion in the report of the matters based on his information in the form and context in which it appears.

Prospect confirms it is not aware of any new information or data which materially affects the information included in the original market announcements. Prospect confirms the form and context in which the Competent Person's findings are presented have not been materially modified from the original market announcements.

### **Compliance Statements**

Copper equivalent (CuEq) has been used to report Mineral Resource estimated tonnages and associated grades that carry both gold and cobalt credits at the Mumbhezhi Copper Project. Prospect has confidence in the existing metallurgical test work completed for transition and fresh copper composites from the Nyungu Central deposit, that gold and cobalt will be recoverable by conventional flotation processing and copper concentration. These metals are commonly traded on worldwide commodity markets. It is the opinion of Prospect that all the elements included in the metal equivalents calculation have reasonable potential of being recovered and sold in the future.

## Caution Regarding Forward-Looking Information

This announcement may contain some references to forecasts, estimates, assumptions, and other forward-looking statements. Although the Company believes that its expectations, estimates and forecast outcomes are based on reasonable assumptions, it can give no assurance that they will be achieved. They may be affected by a variety of variables and changes in underlying assumptions that are subject to risk factors associated with the nature of the business, which could cause actual results to differ materially from those expressed herein. All references to dollars (\$) and cents in this announcement are in Australian currency, unless otherwise stated. Investors should make and rely upon their own enquiries before deciding to acquire or deal in the Company's securities.

## About Prospect Resources Limited (ASX: PSC, FRA:5E8)

Prospect Resources Limited (ASX: PSC, FRA:5E8) is an ASX listed company focused on the exploration and development of electrification and battery metals mining projects in the broader sub-Saharan African region.

## About the Mumbeszi Copper Project

The Mumbeszi Copper Project (90% Prospect) (**Mumbeszi**) is situated in the world-class Central African Copperbelt region of north-western Zambia. Located on two granted Large Scale Mining Licences (39445-HQ-LML; 39465-HQ-LML), Mumbeszi covers approximately 356 square kilometres of highly prospective tenure which lies in close proximity to several major mines which are hosted in similar geological settings

Prospect's Phase 1 drilling programme at Mumbeszi returned highly encouraging results, validating the growth potential of the significant endowment of copper mineralisation at Nyungu Central and delivering further confidence in a potential future large-scale, open pit mining development at Mumbeszi.

The Phase 2 drilling and exploration programmes began in mid-May and were completed in November 2025.

In May 2026, Prospect delivered an updated JORC-reportable Indicated and Inferred Mineral Resource estimate for Mumbeszi of 208.1Mt @ 0.42% Cu (0.49% CuEq) for 877 kt of contained copper.



## About Copper

Copper is a red-orange coloured metallic element in its pure form. It is highly conductive to heat and electricity, and is physically soft and malleable. Copper has been used for various purposes dating back at least 10,000 years. Today, it is mostly used by the electrical industry to make wires, cables, and other electronic components and is the key component. The metal is widely seen as a green-energy transition material, in part because of the wiring needed for electric cars. EVs can use up to 80kg of copper, four times the amount typically used in combustion engine vehicles.

## APPENDIX 1: Drill collar locations and drill hole details for the Mumbeszi Copper Project (Datum is *UTM\_WGS84\_35S*)

Hole_ID	Drill Type	Deposit	DH_East	DH_North	DH_RL	Datum	DH_Dip	DH_Azimuth	DH_Depth
DD23_1	DD	Nyungu Central	339101	8630197	1315	UTM_WGS84_35S	-70	90	300.00
DD23_3	DD	Nyungu Central	339081	8629900	1311	UTM_WGS84_35S	-70	270	300.00
DD23_4	DD	Nyungu Central	339176	8629751	1308	UTM_WGS84_35S	-70	90	300.00
KBDD001	DD	Kabikupa	348748	8635752	1251	UTM_WGS84_35S	-70	228	206.90
KBDD002	DD	Kabikupa	348880	8635900	1261	UTM_WGS84_35S	-70	228	297.00
KBDD003	DD	Kabikupa	349325	8635200	1251	UTM_WGS84_35S	-60	273	154.20
KBDD004	DD	Kabikupa	349000	8635500	1251	UTM_WGS84_35S	-70	228	244.91
KBDD005	DD	Kabikupa	349780	8634830	1253	UTM_WGS84_35S	-70	228	201.00
KBDD006	DD	Kabikupa	348390	8635940	1255	UTM_WGS84_35S	-70	138	290.00
KBDD007	DD	Kabikupa	349298	8635354	1246	UTM_WGS84_35S	-70	228	267.00
KBDD008	DD	Kabikupa	349987	8635042	1265	UTM_WGS84_35S	-70	228	212.00
KKDD001	DD	Kabikupa	348820	8635870	1318	UTM_WGS84_35S	-70	220	250.10
KKDD002	DD	Kabikupa	348830	8635680	1320	UTM_WGS84_35S	-70	220	224.10
KKDD003	DD	Kabikupa	349190	8635420	1318	UTM_WGS84_35S	-70	220	206.00
KKDD004	DD	Kabikupa	348950	8635600	1320	UTM_WGS84_35S	-70	220	220.00
KKDD005	DD	Kabikupa	349420	8635290	1320	UTM_WGS84_35S	-70	220	203.50
KKDD006	DD	Kabikupa	349218	8635356	1309	UTM_WGS84_35S	-60	225	225.70
KKDD007	DD	Kabikupa	348676	8635668	1314	UTM_WGS84_35S	-60	225	150.90
KKDD008	DD	Kabikupa	349472	8635228	1321	UTM_WGS84_35S	-60	225	191.10
KKDD009	DD	Kabikupa	349000	8635390	1317	UTM_WGS84_35S	-60	225	176.40
KKDD010	DD	Kabikupa	349195	8635733	1324	UTM_WGS84_35S	-70	180	379.90
KKDD011	DD	Kabikupa	349000	8635800	1327	UTM_WGS84_35S	-70	220	360.40
KKDD012	DD	Kabikupa	349139	8635926	1333	UTM_WGS84_35S	-60	225	389.50
KKDD013	DD	Kabikupa	349648	8635143	1327	UTM_WGS84_35S	-60	225	170.00
KKDD014	DD	Kabikupa	348605	8635595	1311	UTM_WGS84_35S	-60	225	152.60
KKDD015	DD	Kabikupa	348817	8635544	1319	UTM_WGS84_35S	-60	220	227.60
KKDD016	DD	Kabikupa	349012	8635353	1316	UTM_WGS84_35S	-60	225	225.20
KKDD017	DD	Kabikupa	349398	8635148	1318	UTM_WGS84_35S	-60	225	200.60
KKDD018	DD	Kabikupa	348664	8635814	1310	UTM_WGS84_35S	-70	220	197.70
KKDD019	DD	Kabikupa	348537	8635645	1304	UTM_WGS84_35S	-70	220	150.90
KKMT001	DD	Kabikupa	348748	8635607	1312	UTM_WGS84_35S	-60	220	150.00
MBD00RC001	RCD	Nyungu Central	339080	8630422	1318	UTM_WGS84_35S	-60	90	228.00
MBD00RC002	RCD	Nyungu Central	339167	8630397	1315	UTM_WGS84_35S	-60	90	180.00
MBD00RC003	RCD	Nyungu Central	339319	8630401	1310	UTM_WGS84_35S	-60	90	200.00
MBD00RC004	RCD	Nyungu Central	339075	8629994	1313	UTM_WGS84_35S	-60	90	252.00
MBD00RC005	RCD	Nyungu Central	339143	8630059	1312	UTM_WGS84_35S	-60	90	200.00
MBD00RC006	RCD	Nyungu Central	339295	8630062	1307	UTM_WGS84_35S	-60	90	156.00
MBD00RC007	RCD	Nyungu Central	338795	8629685	1315	UTM_WGS84_35S	-60	90	234.00
MBD00RC008	RCD	Nyungu Central	339048	8629652	1310	UTM_WGS84_35S	-60	90	196.00
MBD00RC009	RCD	Nyungu Central	339201	8629665	1308	UTM_WGS84_35S	-60	90	150.00
MBD00RC010	RCD	Nyungu Central	339354	8629672	1304	UTM_WGS84_35S	-60	90	125.00
MBD00RC011	RCD	Nyungu Central	339625	8629650	1310	UTM_WGS84_35S	-60	90	100.00
MBD01RC001	RCD	Nyungu Central	339161	8629474	1307	UTM_WGS84_35S	-60	93	228.00
MBD01RC002	RCD	Nyungu Central	339136	8629860	1310	UTM_WGS84_35S	-60	90	200.00
MBD01RC003	RCD	Nyungu Central	339342	8630264	1308	UTM_WGS84_35S	-60	93	194.65
MBD01RC004	RCD	Nyungu Central	339198	8630256	1312	UTM_WGS84_35S	-60	93	252.00
MBD01RC005	RCD	Nyungu Central	339222	8630803	1317	UTM_WGS84_35S	-90	0	270.00
MBD01RC006	RCD	Nyungu Central	339347	8630814	1314	UTM_WGS84_35S	-90	0	200.00
MBD01RC007	RCD	Nyungu Central	339438	8631238	1328	UTM_WGS84_35S	-90	0	200.00
MBD01RC008	RCD	Nyungu Central	339240	8631238	1333	UTM_WGS84_35S	-90	0	130.00
MBD01RC009	RCD	Nyungu Central	338646	8630834	1342	UTM_WGS84_35S	-90	0	220.00
MM296	RCD	Nyungu Central	339090	8630290	1316	UTM_WGS84_35S	-90	0	551.70
MWDD001	DD	West Mwombeszi	341600	8642850	1285	UTM_WGS84_35S	-70	90	299.80
MWDD002	DD	West Mwombeszi	341750	8642700	1285	UTM_WGS84_35S	-70	90	247.90
MWDD003	DD	West Mwombeszi	342173	8643037	1278	UTM_WGS84_35S	-70	90	215.30
MWDD004	DD	West Mwombeszi	342324	8643167	1283	UTM_WGS84_35S	-70	110	149.30
MWDD005	DD	West Mwombeszi	342345	8643374	1287	UTM_WGS84_35S	-70	110	149.20
MWDD006	DD	West Mwombeszi	342515	8643698	1292	UTM_WGS84_35S	-70	110	150.60

Hole_ID	Drill Type	Deposit	DH_East	DH_North	DH_RL	Datum	DH_Dip	DH_Azimuth	DH_Depth
MWDD007	DD	West Mwombezhi	341755	8642850	1280	UTM_WGS84_35S	-70	90	200.40
MWDD008	DD	West Mwombezhi	341621	8643164	1295	UTM_WGS84_35S	-70	90	250.00
MWDD009	DD	West Mwombezhi	341925	8643165	1280	UTM_WGS84_35S	-70	100	175.00
MWDD010	DD	West Mwombezhi	342125	8643165	1285	UTM_WGS84_35S	-70	100	150.20
MWDD011	DD	West Mwombezhi	342125	8643565	1280	UTM_WGS84_35S	-70	100	150.60
NCDD001	DD	Nyungu Central	339199	8629849	1308	UTM_WGS84_35S	-70	90	172.20
NCDD002	DD	Nyungu Central	339300	8629851	1306	UTM_WGS84_35S	-70	90	201.70
NCDD003	DD	Nyungu Central	339048	8630097	1315	UTM_WGS84_35S	-70	90	289.40
NCDD004	DD	Nyungu Central	338944	8630393	1321	UTM_WGS84_35S	-70	90	523.00
NCDD005	DD	Nyungu Central	339141	8629594	1307	UTM_WGS84_35S	-70	90	177.00
NCDD006	DD	Nyungu Central	339245	8629597	1305	UTM_WGS84_35S	-70	90	188.00
NCDD007	DD	Nyungu Central	338976	8630274	1319	UTM_WGS84_35S	-70	90	500.00
NCDD008	DD	Nyungu Central	339000	8629974	1310	UTM_WGS84_35S	-70	90	406.90
NCDD009	DD	Nyungu Central	339125	8630650	1320	UTM_WGS84_35S	-70	90	475.00
NCDD010	DD	Nyungu Central	338910	8630050	1315	UTM_WGS84_35S	-70	90	380.00
NCDD011	DD	Nyungu Central	339175	8360900	1315	UTM_WGS84_35S	-70	90	400.90
NCDD012	DD	Nyungu Central	338850	8629970	1315	UTM_WGS84_35S	-70	90	361.90
NCDD013	DD	Nyungu Central	338300	8630400	1330	UTM_WGS84_35S	-60	90	770.00
NCDD014	DD	Nyungu Central	339200	8631150	1325	UTM_WGS84_35S	-70	90	424.90
NCDD015	DD	Nyungu Central	339000	8629755	1310	UTM_WGS84_35S	-70	90	250.84
NCDD016	DD	Nyungu Central	338845	8629755	1314	UTM_WGS84_35S	-70	90	284.00
NCDD017	DD	Nyungu Central	339000	8629595	1310	UTM_WGS84_35S	-70	90	121.90
NCDD018	DD	Nyungu Central	339000	8629450	1309	UTM_WGS84_35S	-70	90	214.90
NCDD019	DD	Nyungu Central	339000	8629325	1308	UTM_WGS84_35S	-70	90	259.90
NCDD020	DD	Nyungu Central	338780	8629655	1309	UTM_WGS84_35S	-70	90	275.00
NCDD021	DD	Nyungu Central	338940	8629655	1309	UTM_WGS84_35S	-70	90	175.90
NCDD022	DD	Nyungu Central	338925	8629850	1309	UTM_WGS84_35S	-70	90	275.00
NCDD023	DD	Nyungu Central	338850	8630145	1309	UTM_WGS84_35S	-70	90	425.00
NCMT001	DD	Nyungu Central	339098	8629969	1312	UTM_WGS84_35S	-90	0	242.00
NCMT002	DD	Nyungu Central	339064	8630394	1315	UTM_WGS84_35S	-70	82	443.00
NCRD001	RCD	Nyungu Central	339299	8630197	1309	UTM_WGS84_35S	-70	90	250.40
NCRD002	RCD	Nyungu Central	339340	8629898	1305	UTM_WGS84_35S	-70	90	180.50
NCRD003	RCD	Nyungu Central	339268	8630396	1312	UTM_WGS84_35S	-70	90	234.10
NCRD004A	RCD	Nyungu Central	338966	8630197	1318	UTM_WGS84_35S	-70	90	72.00
NCRD004R	RCD	Nyungu Central	338960	8630197	1318	UTM_WGS84_35S	-70	90	431.00
NCRD005	RCD	Nyungu Central	339123	8630502	1318	UTM_WGS84_35S	-70	90	401.00
NCRD006	RCD	Nyungu Central	339221	8630098	1310	UTM_WGS84_35S	-70	90	100.00
NCRD007	RCD	Nyungu Central	339049	8630197	1316	UTM_WGS84_35S	-70	90	385.60
NCRD008	RCD	Nyungu Central	339219	8630049	1310	UTM_WGS84_35S	-70	90	183.00
NCRD009	RCD	Nyungu Central	338950	8630096	1317	UTM_WGS84_35S	-70	90	405.40
NCRD010	RCD	Nyungu Central	339000	8630146	1317	UTM_WGS84_35S	-70	90	450.10
NCRD011	RCD	Nyungu Central	339296	8629748	1305	UTM_WGS84_35S	-70	90	182.00
NCRD012	RCD	Nyungu Central	339251	8630246	1311	UTM_WGS84_35S	-70	90	310.00
NCRD013	RCD	Nyungu Central	339298	8630253	1309	UTM_WGS84_35S	-70	90	42.40
NCRD014	RCD	Nyungu Central	338898	8629745	1313	UTM_WGS84_35S	-70	90	69.00
NCRD015	RCD	Nyungu Central	338799	8629747	1315	UTM_WGS84_35S	-70	90	55.00
NCRD016	RCD	Nyungu Central	339099	8629594	1308	UTM_WGS84_35S	-70	90	80.00
NCRD017	RCD	Nyungu Central	339144	8629594	1307	UTM_WGS84_35S	-70	90	55.00
NCRD018	RCD	Nyungu Central	339203	8629596	1306	UTM_WGS84_35S	-70	90	81.00
NCRD019	RCD	Nyungu Central	339245	8629597	1305	UTM_WGS84_35S	-70	90	49.00
NCRD019R	RCD	Nyungu Central	339256	8629598	1305	UTM_WGS84_35S	-70	90	20.00
NCRD020	RCD	Nyungu Central	339300	8629597	1304	UTM_WGS84_35S	-70	90	73.00
NCRD021	RCD	Nyungu Central	339241	8629949	1309	UTM_WGS84_35S	-70	90	81.00
NCRD022	RCD	Nyungu Central	339218	8629975	1310	UTM_WGS84_35S	-70	90	183.00
NCRD023	RCD	Nyungu Central	338920	8630496	1323	UTM_WGS84_35S	-70	90	587.00
NCRD024	RCD	Nyungu Central	339304	8630297	1310	UTM_WGS84_35S	-70	90	57.00
NCRD025	RCD	Nyungu Central	339200	8630277	1313	UTM_WGS84_35S	-70	90	97.00
NCRD026	RCD	Nyungu Central	338817	8630445	1325	UTM_WGS84_35S	-70	90	680.00
NCRD027	RCD	Nyungu Central	338997	8630050	1315	UTM_WGS84_35S	-70	90	106.00
NSDD001	DD	Nyungu South	338370	8626370	1290	UTM_WGS84_35S	-70	270	250.90

For personal use only

Hole_ID	Drill Type	Deposit	DH_East	DH_North	DH_RL	Datum	DH_Dip	DH_Azimuth	DH_Depth
NSDD002	DD	Nyungu South	338370	8626570	1290	UTM_WGS84_35S	-70	270	250.90
NSDD003	DD	Nyungu South	338310	8626060	1282	UTM_WGS84_35S	-70	270	250.90
NSDD004	DD	Nyungu South	338480	8626770	1286	UTM_WGS84_35S	-70	270	250.00
NSDD005	DD	Nyungu South	338331	8626199	1290	UTM_WGS84_35S	-70	270	247.20
NYDD047	DD	Nyungu North	338340	8630800	1349	UTM_WGS84_35S	-70	93	300.00
NYDD048	DD	Nyungu North	339120	8632800	1306	UTM_WGS84_35S	-70	93	257.80
NYDD049	DD	Nyungu Central	339482	8630000	1302	UTM_WGS84_35S	-60	93	254.80
NYDD050	DD	Nyungu North	338845	8630800	1341	UTM_WGS84_35S	-70	93	263.90
NYDD051	DD	Nyungu East	339750	8629900	1295	UTM_WGS84_35S	-60	93	248.80
NYDD052	DD	Nyungu Central	339160	8630142	1313	UTM_WGS84_35S	-70	90	216.00
NYDD053	DD	Nyungu Central	339164	8630087	1312	UTM_WGS84_35S	-70	90	287.00
NYDD054	DD	Nyungu Central	339146	8630192	1314	UTM_WGS84_35S	-65	93	299.00
NYDD055	DD	Nyungu Central	339150	8630240	1314	UTM_WGS84_35S	-65	90	380.00
NYDD056	DD	Nyungu Central	339148	8630293	1314	UTM_WGS84_35S	-65	90	383.00
NYDD057	DD	Nyungu Central	339080	8630394	1318	UTM_WGS84_35S	-65	90	400.90
NYDD058	DD	Nyungu Central	339069	8629971	1312	UTM_WGS84_35S	-70	90	231.00
NYDD059	DD	Nyungu Central	339123	8629971	1311	UTM_WGS84_35S	-70	90	198.00
NYDD060	DD	Nyungu Central	339151	8629655	1308	UTM_WGS84_35S	-60	90	234.00
NYDD061	DD	Nyungu Central	339046	8629901	1312	UTM_WGS84_35S	-65	90	234.00
NYDD062	DD	Nyungu Central	339022	8630341	1318	UTM_WGS84_35S	-60	90	426.00
NYDD063	DD	Nyungu Central	339142	8629761	1309	UTM_WGS84_35S	-70	90	198.00
NYDD064	DD	Nyungu Central	339027	8630497	1320	UTM_WGS84_35S	-65	90	460.50
NYRC031	RC	Nyungu Central	339120	8630222	1314	UTM_WGS84_35S	-70	90	117.00
NYRC032	RC	Nyungu Central	339061	8630776	1321	UTM_WGS84_35S	-70	90	133.00
NYRC033	RC	Nyungu Central	338979	8630775	1323	UTM_WGS84_35S	-70	90	85.00
NYRC034	RC	Nyungu Central	339820	8635601	1268	UTM_WGS84_35S	-70	90	100.00
NYRC035	RC	Nyungu Central	339742	8635601	1272	UTM_WGS84_35S	-70	90	127.00
NYRC036	RC	Nyungu Central	339540	8633199	1294	UTM_WGS84_35S	-70	90	91.00
NYRC037	RC	Nyungu Central	339621	8633203	1289	UTM_WGS84_35S	-70	90	91.00
NYRC038	RC	Nyungu East	339893	8629932	1291	UTM_WGS84_35S	-70	90	120.00
NYRC039	RC	Nyungu East	339940	8629932	1290	UTM_WGS84_35S	-70	90	110.00
NYRC040	RC	Nyungu East	339991	8629931	1288	UTM_WGS84_35S	-70	90	98.00
NYRC041	RC	Nyungu East	340041	8629930	1287	UTM_WGS84_35S	-70	90	108.00
NYRC042	RC	Nyungu East	339839	8629833	1292	UTM_WGS84_35S	-70	90	48.00
NYRC043	RC	Nyungu East	339892	8629832	1291	UTM_WGS84_35S	-70	90	70.00
NYRC044	RC	Nyungu East	339918	8630231	1289	UTM_WGS84_35S	-70	90	24.00
NYRD024	RCD	Nyungu South	338217	8626373	1290	UTM_WGS84_35S	-70	90	216.00
NYRD025	RCD	Nyungu South	338144	8626377	1292	UTM_WGS84_35S	-70	90	186.15
NYRD026	RCD	Nyungu South	338061	8626374	1295	UTM_WGS84_35S	-70	90	113.65
NYRD027	RCD	Nyungu South	338298	8626775	1292	UTM_WGS84_35S	-70	90	198.65
NYRD028	RCD	Nyungu South	338220	8626776	1294	UTM_WGS84_35S	-70	90	201.15
NYRD029	RCD	Nyungu South	338142	8626774	1296	UTM_WGS84_35S	-70	90	149.65
NYRD030	RCD	Nyungu Central	339016	8629836	1312	UTM_WGS84_35S	-70	90	200.65
NYRD031	RCD	Nyungu Central	339120	8630222	1314	UTM_WGS84_35S	-70	90	305.65
NYRD038	RCD	Nyungu Central	339139	8630775	1319	UTM_WGS84_35S	-70	87	300.00
NYRD039	RCD	Nyungu South	338216	8626578	1292	UTM_WGS84_35S	-70	90	216.45
NYRD040	RCD	Nyungu South	338134	8626578	1294	UTM_WGS84_35S	-70	90	159.55
NYRD041	RCD	Nyungu South	338096	8626178	1291	UTM_WGS84_35S	-70	90	116.46
NYRD042	RCD	Nyungu South	338174	8626178	1289	UTM_WGS84_35S	-70	90	170.55
NYRD043	RCD	Nyungu Central	339200	8630738	1317	UTM_WGS84_35S	-70	93	242.65
NYRD044	RCD	Nyungu Central	339180	8630578	1316	UTM_WGS84_35S	-70	93	239.75
NYRD045	RCD	Nyungu Central	339095	8630273	1316	UTM_WGS84_35S	-70	93	302.55
NYRD046	RCD	Nyungu Central	339113	8630080	1313	UTM_WGS84_35S	-70	90	290.25
NYU1	DD	Nyungu Central	338960	8630290	1320	UTM_WGS84_35S	-90	0	300.00
NYU11RD001	RCD	Nyungu Central	339086	8630391	1317	UTM_WGS84_35S	-90	0	308.50
NYU11RD002	RCD	Nyungu Central	339233	8630395	1313	UTM_WGS84_35S	-90	0	299.81
NYU11RD003	RCD	Nyungu Central	339377	8630392	1308	UTM_WGS84_35S	-90	0	194.65
NYU11RD004	RCD	Nyungu Central	338933	8630394	1322	UTM_WGS84_35S	-90	0	296.50
NYU11RD005	RCD	Nyungu Central	339122	8629658	1308	UTM_WGS84_35S	-90	0	185.60
NYU11RD006	RCD	Nyungu Central	338970	8629656	1311	UTM_WGS84_35S	-60	90	149.20

Hole_ID	Drill Type	Deposit	DH_East	DH_North	DH_RL	Datum	DH_Dip	DH_Azimuth	DH_Depth
NYU11RD007	RCD	Nyungu Central	338724	8629657	1316	UTM_WGS84_35S	-60	90	70.00
NYU11RD008	RCD	Nyungu Central	339244	8629657	1306	UTM_WGS84_35S	-60	90	191.20
NYU11RD009	RCD	Nyungu Central	339278	8630002	1308	UTM_WGS84_35S	-60	90	200.30
NYU11RD010	RCD	Nyungu Central	339123	8629999	1312	UTM_WGS84_35S	-60	90	305.14
NYU11RD011	RCD	Nyungu Central	338977	8629993	1315	UTM_WGS84_35S	-60	90	300.10
NYU11RD012	RCD	Nyungu Central	338545	8630024	1336	UTM_WGS84_35S	-60	90	121.50
NYU11RD013	RCD	Nyungu Central	339275	8630795	1315	UTM_WGS84_35S	-60	90	116.20
NYU11RD014	RCD	Nyungu Central	338736	8630826	1343	UTM_WGS84_35S	-60	90	200.20
NYU11RD015	RCD	Nyungu Central	338450	8630820	1345	UTM_WGS84_35S	-60	90	82.00
NYU11RD016	RCD	Nyungu Central	339434	8631226	1329	UTM_WGS84_35S	-60	90	180.30
NYU11RD017	RCD	Nyungu Central	338699	8631218	1339	UTM_WGS84_35S	-60	90	53.00
NYU11RD018	RCD	Nyungu Central	338494	8631224	1342	UTM_WGS84_35S	-60	90	76.00
NYU11RD019	RCD	Nyungu Central	338600	8630822	1342	UTM_WGS84_35S	-60	90	179.30
NYU11RD020	RCD	Nyungu Central	338405	8630420	1332	UTM_WGS84_35S	-60	90	150.30
NYU11RD021	RCD	Nyungu Central	339123	8629865	1310	UTM_WGS84_35S	-70	90	297.89
NYU11RD022	RCD	Nyungu Central	339238	8630193	1311	UTM_WGS84_35S	-90	0	180.40
NYU11RD023	RCD	Nyungu Central	339090	8630203	1315	UTM_WGS84_35S	-90	0	67.00
NYU2	DD	Nyungu Central	338960	8630030	1316	UTM_WGS84_35S	-90	0	350.50
WMDD001	DD	West Mwombezhi	341940	8643000	1278	UTM_WGS84_35S	-60	93	252.00
WMDD002	DD	West Mwombezhi	341760	8643000	1280	UTM_WGS84_35S	-60	93	302.80
WMDD003	DD	West Mwombezhi	341630	8643000	1285	UTM_WGS84_35S	-70	93	287.90
WMDD006	DD	West Mwombezhi	341640	8643700	1298	UTM_WGS84_35S	-60	93	277.30

## APPENDIX 2: Formula for Copper Equivalent (CuEq%) calculations

Metal equivalents have been calculated at a copper price of US\$11,500/tonne, gold price of US\$3,500/ounce and cobalt price of US\$40,000/tonne.

Prospect Resources has taken a conservative approach to its commodity pricing assumptions and utilised Canaccord Genuity (CG) commodity price forecasts for copper and cobalt as stated in its December 2025 commodity price deck (<https://canaccordgenuity.bluematrix.com>), to arrive at the figures used in the CuEq% calculation.

Gold spot price was reviewed (<https://www.kitco.com/charts/gold>) and a conservative long term gold pricing was arrived at to support the figure used in the CuEq% calculation.

Copper metallurgical recovery is 90% and cobalt metallurgical recovery is 50% based on metallurgical test work undertaken by Prospect Resources Ltd (refer PSC ASX releases dated 19 May 2025 and 17 July 2025). Gold metallurgical recovery is conservatively estimated at 70% based on limited testing having been completed to date.

The estimated recoveries are consistent with regional benchmarks for similar low-grade copper deposits in Zambia, notably neighbouring operations managed by First Quantum Minerals and Barrick, who mine and process similar deposits to those defined at the Mumbezhi Project.

Copper equivalent was calculated based on the formula:  $CuEq\% = Cu\% + (Au\ grade \times ((Au\ Price/Cu\ Price) \times (Au\ recovery /Cu\ recovery))) + Co\ grade \times ((Co\ price/Cu\ price) \times (Co\ recovery/Cu\ recovery))$ .

In Prospect Resources' opinion, the elements included in the copper metal equivalent calculation have reasonable potential to be recovered and sold.

## JORC Code, 2012 Edition – Table 1

### Section 1 Sampling Techniques and Data

(Criteria in this section apply to all succeeding sections.)

Criteria	JORC Code explanation	Commentary
<b>Sampling techniques</b>	<ul style="list-style-type: none"> <li>Nature and quality of sampling (eg cut channels, random chips, or specific specialised industry standard measurement tools appropriate to the minerals under investigation, such as down hole gamma sondes, or handheld XRF instruments, etc). These examples should not be taken as limiting the broad meaning of sampling.</li> <li>Include reference to measures taken to ensure sample representivity and the appropriate calibration of any measurement tools or systems used.</li> <li>Aspects of the determination of mineralisation that are Material to the Public Report.</li> <li>In cases where 'industry standard' work has been done this would be relatively simple (eg 'reverse circulation drilling was used to obtain 1 m samples from which 3 kg was pulverised to produce a 30 g charge for fire assay'). In other cases more explanation may be required, such as where there is coarse gold that has inherent sampling problems. Unusual commodities or mineralisation types (eg submarine nodules) may warrant disclosure of detailed information.</li> </ul>	<ul style="list-style-type: none"> <li>Prospect Resources' Mumbeszi Mineral Resource definition drilling programmes were aimed at verifying parts of the existing Nyungu Central model, and testing the potential for eastern oxide-transition up-dip, northern down plunge, western down-dip sulphide, and southern up-plunge oxide-transition extensions.</li> <li>At West Mwombeszi, drilling was completed to establish continuity of historical copper intersections and more recent geochemical and geophysical anomalies defined by Prospect.</li> <li>At Kabikupa, drilling was completed to test historical drilling intersections and then extend those both up-dip, down dip and along strike to the southeast and northwest.</li> <li>Drill spacing at West Mwombeszi was designed to establish a maiden Inferred Mineral Resource, with drill holes completed to sample copper mineralisation as close to perpendicular as possible.</li> <li>In total, 22,283m of DD (93 holes) and 2,025m RC (29 holes) were completed at Nyungu Central, Kabikupa, West Mwombeszi, Nyungu North and Nyungu South by Prospect in 2025 (Phase 1) and 2026 (Phase 2).</li> <li>Full gold re-assay results are also available for 2,837 samples for the Nyungu Central MRE update.</li> <li>Drill holes were completed to sample across the copper mineralisation as close to perpendicular as possible.</li> <li>Samples were either collected on 1m spacing or separated at defined lithology boundaries.</li> <li>Diamond drilling (DD) at Nyungu Central was completed using two track mounted LF90s (driven by a</li> </ul>

Criteria	JORC Code explanation	Commentary
		<p>Cummings 6.7L) were operated by Ox Drilling - drill core size was PQ. Initially, drilling through the transitional zone normally 60-80m depth, thereafter NQ size was used.</p> <ul style="list-style-type: none"> <li>• DD at West Mwombezhi and Kabikupa was completed with a Leos Drilling Atlas Copco CS14 wireline with standard PQ and HQ core size.</li> <li>• Handheld pXRF measurements were taken on RC samples, using an Innovx Vanta C with composite sampling conducted on non-mineralised material (cut-off grade &lt;0.1% Cu) and single metre sampling of mineralised material (cut-off grade &gt;0.1% Cu). These composited and single metre samples were then dispatched to the certified laboratory, as required.</li> <li>• Half drill core was sampled based on observed copper mineralisation and intervals of one metre or less determined by geological contacts within mineralised units.</li> <li>• Drill core cut at a consistent distance relative to solid orientation line or dashed mark-up line.</li> <li>• Diamond drill core samples were dispatched in batches to ALS Ndola or Intertek (Kitwe), for preparation and blind standard insertion. Samples were dried, crushed to 85% (-5mm), spilt up to 1.2kg, pulverised to 85% (-75µm).</li> <li>• The pulps were then collected by courier and delivered to SGS Kalulushi for copper, cobalt and gold analyses.</li> <li>• AAS42S analysis conducted was standard 4-acid digestion (HNO<sub>3</sub>/HClO<sub>4</sub>/HCl/HF) using a 0.4g pulp. Digestion temperature is set at 200°C for 45 minutes, with AAS finish on bulked up solution to produce Total Cu and Co analyses.</li> <li>• AAS72C "single acid" (5% H<sub>2</sub>SO<sub>4</sub> + Na<sub>2</sub>SO<sub>3</sub>) cold leach using a 0.5g</li> </ul>

For personal use only

Criteria	JORC Code explanation	Commentary
		<p>pulp, followed by AAS gives Acid Soluble Cu, Co.</p> <ul style="list-style-type: none"> <li>• A total of 8,785.7m DD in 36 holes was drilled at Nyungu Central and West Mwombezi.</li> <li>• West Mwombezi DD core was analysed for Cu/Co at SGS in batches of 150-200 samples.</li> <li>• Samples from zones defined as lying within the Cu-Co mineralisation were dispatched for multi-element assay at ALS-Johannesburg by the ICP-ME61 method.</li> <li>• Gold fire assays were completed retrospectively on mineralised Cu intersections from Nyungu Central at SGS (Kalulushi).</li> </ul>
<b>Drilling techniques</b>	<ul style="list-style-type: none"> <li>• Drill type (eg core, reverse circulation, open-hole hammer, rotary air blast, auger, Bangka, sonic, etc) and details (eg core diameter, triple or standard tube, depth of diamond tails, face-sampling bit or other type, whether core is oriented and if so, by what method, etc).</li> </ul>	<ul style="list-style-type: none"> <li>• In Phase 2, at Nyungu Central, a total of 6570.7m diamond drilling in 24 holes was conducted by Ox Drilling. At West Mwombezi, 12 holes were drilled for 2,217.6m. Whilst at Kabikupa 3,348.5m were drilled in 15 holes and 1,249.9m in 5 holes for Nyungu South.</li> <li>• Orientation determined by Axis Mining orientation instrument. Down hole surveying was completed initially by Board Longyear TruShot Multishot EMS, superseded (after validity comparison) by an Axis Mining Technology ChampNavigator North-Seeking Continuous Gyro.</li> </ul>
<b>Drill sample recovery</b>	<ul style="list-style-type: none"> <li>• Method of recording and assessing core and chip sample recoveries and results assessed.</li> <li>• Measures taken to maximise sample recovery and ensure representative nature of the samples.</li> <li>• Whether a relationship exists between sample recovery and grade and whether sample bias may have occurred due to preferential loss/gain of fine/coarse material.</li> </ul>	<ul style="list-style-type: none"> <li>• Initial geotechnical logging recording core recoveries and RQD, with recoveries exceeding 95%.</li> <li>• For RC chips, samples are weighed and weights recorded to estimate recovery.</li> <li>• No observed relationship between core loss and grades.</li> </ul>
<b>Logging</b>	<ul style="list-style-type: none"> <li>• Whether core and chip samples have been geologically and geotechnically logged to a level of</li> </ul>	<ul style="list-style-type: none"> <li>• For Mwombezi, logging of drill core incorporated the following details: from-to depths, colour and hue,</li> </ul>

Criteria	JORC Code explanation	Commentary
	<p>detail to support appropriate Mineral Resource estimation, mining studies and metallurgical studies.</p> <ul style="list-style-type: none"> <li>• Whether logging is qualitative or quantitative in nature. Core (or costean, channel, etc) photography.</li> <li>• The total length and percentage of the relevant intersections logged.</li> </ul>	<p>stratigraphy, weathering, texture, structure, structure orientation; type, mode and intensity of alteration and ore minerals, zone type for mineralised rock (oxide, transition, sulphide), geological notes and % estimate of ore minerals present.</p> <ul style="list-style-type: none"> <li>• Logging of RC chips was conducted on a metre-by-metre basis whilst for the diamond drill core, criteria for unit boundaries were based on contrasting lithologies, absence or presence of mineralisation; sudden changes of weathering — usually associated with structures, plus changes in major rock forming or alteration minerals such as the presence of large garnets. A guide to core logging was written to provide uniformity of interpretations and consistent data entry.</li> <li>• 100% of all drilling was geologically logged, using standard Prospect Resources codes.</li> <li>• All core was photographed wet and dry, photographs digitally named and organised.</li> <li>• Samples from RC holes (Nyungu Central) were archived in standard 20m plastic chip trays.</li> <li>• Logging was qualitative; however, geologists record visual quantitative mineral % ranges for sulphide minerals present.</li> <li>• All holes and copper intersections have been logged.</li> </ul>
<p><b>Sub-sampling techniques and sample preparation</b></p>	<ul style="list-style-type: none"> <li>• If core, whether cut or sawn and whether quarter, half or all core taken.</li> <li>• If non-core, whether riffled, tube sampled, rotary split, etc and whether sampled wet or dry.</li> <li>• For all sample types, the nature, quality, and appropriateness of the sample preparation technique.</li> <li>• Quality control procedures adopted for all sub-sampling stages to maximise representivity of samples.</li> <li>• Measures taken to ensure that the sampling is representative of the in</li> </ul>	<ul style="list-style-type: none"> <li>• For Mumbezhi, all core cut with core saw. Half core sampled in mineralised units; quarter core sampled in non-mineralised units.</li> <li>• High quality sampling procedures and appropriate sample preparation techniques were followed.</li> <li>• RC samples were collected from the rig in metre intervals and riffle split at the rig by field assistants if dry to obtain a ~3kg sample.</li> <li>• Several standards (commercial certified reference material (CRM)) were inserted at intervals of 1 in 20 in</li> </ul>

Criteria	JORC Code explanation	Commentary
	<p>situ material collected, including for instance results for field duplicate/second-half sampling.</p> <ul style="list-style-type: none"> <li>Whether sample sizes are appropriate to the grain size of the material being sampled.</li> </ul>	<p>rotation. Immediately following a standard, a blank was inserted.</p> <ul style="list-style-type: none"> <li>Sample size (approximately 2kg in mass) considered appropriate to the grain size of material being sampled.</li> <li>Testing for gold focused initially on three rock types; i) base of the transitional zone, ii) cross-cutting younger veins and iii) zones of Cu-Co mineralisation.</li> <li>The assay laboratories' sample preparation procedures follow industry best practice, with techniques and practices that are considered appropriate for this style of mineralisation.</li> <li>Pulp duplicates were taken at the pulverising stage at the laboratories discretion.</li> </ul>
<p><b>Quality of assay data and laboratory tests</b></p>	<ul style="list-style-type: none"> <li>The nature, quality and appropriateness of the assaying and laboratory procedures used and whether the technique is considered partial or total.</li> <li>For geophysical tools, spectrometers, handheld XRF instruments, etc, the parameters used in determining the analysis including instrument make and model, reading times, calibrations factors applied and their derivation, etc.</li> <li>Nature of quality control procedures adopted (eg standards, blanks, duplicates, external laboratory checks) and whether acceptable levels of accuracy (ie lack of bias) and precision have been established.</li> </ul>	<ul style="list-style-type: none"> <li>For the Nyungu Central, Kabikupa and West Mwombezi drilling, certified laboratories (SGS, Intertek and ALS) were used. The AAS techniques are considered appropriate for the type of mineralisation being assayed.</li> <li>Several standards (commercial certified reference material) were inserted at intervals of 1 in 20 in rotation. Immediately following a standard, a blank was inserted. QA/QC monitored on each batch and re-analysis conducted where errors exceeded set limits. The 18 CRMs inserted were AMIS 0247 (4.13% Cu), AMIS 0433 (0.01% Cu), AMIS 0622 (3.3% Cu), AMIS 0623 (3.10% Cu), AMIS 0695 (1.50% Cu), AMIS 0858 (2.94% Cu), AMIS 0856 (1.56% Cu), AMIS 0845 (0.44% Cu), AMIS 0846 (0.73%Cu), AMIS 0847 (1.05% Cu), AMIS 0857 (0.96% Cu), AMIS 0874 (0.0369%Cu), AMIS 0873 (0.67% Cu), AMIS 0829 (0.46% Cu), AMIS 0795 (0.35% Cu), AMIS 0774 (0.63%), AMIS 0830 (0.24% Cu), and AMIS 0844 (0.14% Cu).</li> <li>69 blanks were inserted and all returned satisfactory to inconclusive results. 194 of the different CRM</li> </ul>

Criteria	JORC Code explanation	Commentary
		<p>types lie within 2std deviations of the theoretical values. The correlation factor on the 137 fine and coarse duplicates inserted was 99.6%. The 4 samples that fell outside the acceptance range of mean + 2 Std dev., are all very low grade samples, and the issue is not considered material.</p> <ul style="list-style-type: none"> <li>• For gold assaying, certified laboratories (SGS and ALS) were used. The AAS techniques are considered appropriate for the type of 46 Au certified standards, CRMs (Commercial Certified Reference Materials) produced by AMIS of Johannesburg were inserted at intervals of 1 in 20 in rotation. Immediately following a standard, a blank was inserted. QA/QC monitored on each batch and re-analysis conducted where errors exceeded set limits. The ten different CRM types inserted were AMIS 0881 (5.25g/t Au), AMIS 0923 (1.22g/t Au) AMIS 0622 (0.014g/t Au), AMIS 0623 (0.014g/t Au), AMIS 0695 (0.093g/t Au), AMIS 0696 (0.556g/t Au), AMIS 0795 (0.046g/t Au), AMIS 0844 (0.004g/t Au), AMIS 0845 (0.016g/t Au) and AMIS 0695 (0.022g/t Au).</li> <li>• For the most recent gold re-assaying of Phase 2 drilling samples all the blanks produced satisfactorily low results and all the CRM types lie within 2 std deviations of the theoretical values. The correlation factor on the 140 fine laboratory duplicates is a creditable 76%. Six of the results lay beyond acceptable limits, and have been marked for “blind” re-assay. It should be noted however that these are all low &lt;0.16g/t Au sample assays.</li> <li>• In conclusion, the sample preparation procedures at ALS and</li> </ul>

For personal use only

Criteria	JORC Code explanation	Commentary
<b>Verification of sampling and assaying</b>	<ul style="list-style-type: none"> <li>The verification of significant intersections by either independent or alternative company personnel.</li> <li>The use of twinned holes.</li> <li>Documentation of primary data, data entry procedures, data verification, data storage (physical and electronic) protocols.</li> <li>Discuss any adjustment to assay data.</li> </ul>	<p>Intertek, and the accuracy and precision of SGS Kalulushi are adequate for purpose.</p> <ul style="list-style-type: none"> <li>For Mumbezhi, all the significant intersections and the majority of drill core were inspected by numerous geologists including Prospect's Chief Geologist and Competent Person.</li> <li>All the core from Argonaut's 2011 and 2014 drilling is stored at Kitwe-based geological consultants, AMC.</li> <li>No specific twinned holes have been drilled at the Mumbezhi Copper Project to date.</li> <li>All data has been entered and stored into Prospect's GeoSpark database, which is a commercially available database product.</li> <li>No adjustments were made to any current or historical data. If data could not be validated to a reasonable level of certainty, it was not used in any resource estimations.</li> </ul>
<b>Location of data points</b>	<ul style="list-style-type: none"> <li>Accuracy and quality of surveys used to locate drill holes (collar and down-hole surveys), trenches, mine workings and other locations used in Mineral Resource estimation.</li> <li>Specification of the grid system used.</li> <li>Quality and adequacy of topographic control.</li> </ul>	<ul style="list-style-type: none"> <li>63 of the historical drill collars were located and surveyed using DGPS by survey consultants, SurvBuild Ltd. Only eight of the historic holes were not located. Holes from the Phase 1 and Phase 2 work were initially located by handheld Garmin 62. Once the programme was completed, the new collars were surveyed by DGPS. The co-ordinate system used is WGS UTM Zone 35S.</li> <li>For 2025 West Mwombezhi holes, DGPS pick-ups of collars have been undertaken and a detailed drone topographic survey undertaken.</li> <li>For 2024-25 Nyungu Central and Kabikupa holes, DGPS pick-ups of collars have been undertaken and a detailed drone topographic survey undertaken.</li> </ul>
<b>Data spacing and distribution</b>	<ul style="list-style-type: none"> <li>Data spacing for reporting of Exploration Results.</li> <li>Whether the data spacing and distribution is sufficient to establish the degree of geological and grade continuity appropriate for the Mineral Resource and Ore Reserve</li> </ul>	<ul style="list-style-type: none"> <li>For Nyungu Central the original data spacing was generally 200 metre traverses with 160 metre drillhole spacing, some traverses have 80 metre drillhole spacing.</li> <li>Additional drilling to a nominal 100 metre traverse by 80 metre drill</li> </ul>

Criteria	JORC Code explanation	Commentary
	<p>estimation procedure(s) and classifications applied.</p> <ul style="list-style-type: none"> <li>Whether sample compositing has been applied.</li> </ul>	<p>spacing has been estimated geostatistically as being sufficient to establish geological and grade continuity.</p> <ul style="list-style-type: none"> <li>For Kabikupa, drill spacing is more variable, with approx. 50m centres per drill section and drill sections between 100-200m spacing northwest to southeast.</li> <li>For West Mwombezhi, drill spacing varies from 100-200m, extending out to 200-400m spacing in more distal parts of the defined copper mineralisation.</li> <li>Samples from within the mineralised wireframes were used to conduct a sample length analysis. The majority of samples were 1m in length. Conventional mining software was then used to extract fixed length 1m down hole composites within the intervals coded as mineralisation intersections.</li> <li>Current drill spacing and density for Nyungu Central, Kabikupa and West Mwombezhi is considered sufficient to report to JORC (2012) standards for Indicated and Inferred Mineral Resource classification.</li> <li>Prospect Resources' Mineral Resource drilling programmes were focused on expanding the existing resource footprint of Nyungu Central to the north, south and west and the existing copper mineralisation at West Mwombezhi within 39445-HQ-LML.</li> <li>At Nyungu Central, holes were drilled to test the northern down plunge, the eastern extent of the flat lying oxides and the nature of the mineralised system up plunge to the south.</li> <li>Sample composites have not been used.</li> </ul>
<p><b>Orientation of data in relation to geological structure</b></p>	<ul style="list-style-type: none"> <li>Whether the orientation of sampling achieves unbiased sampling of possible structures and the extent to which this is known, considering the deposit type.</li> <li>If the relationship between the</li> </ul>	<ul style="list-style-type: none"> <li>For Nyungu Central, the current drillholes were orientated to intercept normal to the strike of mineralisation and were inclined to the east, at -70°. Mineralisation is interpreted to strike 015° true, dip moderately to steeply</li> </ul>

Criteria	JORC Code explanation	Commentary
	<p>drilling orientation and the orientation of key mineralised structures is considered to have introduced a sampling bias, this should be assessed and reported if material.</p>	<p>to the west and plunge moderately to the north.</p> <ul style="list-style-type: none"> <li>• Due to the dip attitude of the mineralisation, 70° inclined drillholes do not intersect the mineralisation completely perpendicularly. This is not considered to have introduced any significant bias.</li> <li>• Geological mapping was undertaken at prospect scale to refine local structural fabric and thus to drill perpendicular to the interpreted deposit's strike.</li> <li>• For Kabikupa, drill holes were generally drilled -70° to the southwest, which is perpendicular to the NW-SE strike of the deposit.</li> <li>• For West Mwombezi, the current drill holes were orientated to intercept normal to the strike of the mineralization and were inclined at -70° towards 090-110°. Mineralisation is interpreted to strike 015° true, dipping shallowly to the west and plunge moderately to the NNW.</li> <li>• Due to the dip attitude of mineralisation, -70° inclined drillholes do not intersect the mineralisation completely perpendicular. This is not considered to have introduced any significant bias.</li> <li>• Geological mapping was undertaken at prospect scale to refine local structural fabric and thus to drill perpendicular to the interpreted deposit's strike.</li> </ul>
<p><b>Sample security</b></p>	<ul style="list-style-type: none"> <li>• The measures taken to ensure sample security.</li> </ul>	<ul style="list-style-type: none"> <li>• For Nyungu Central, Kabikupa and West Mwombezi, all retained drill core are stored on Site, with historical drill samples in secure sheds in Kitwe at the geological contractor's AMC's facility.</li> <li>• Samples were collected and bagged on site under supervision of the geologist. They were then transported directly to the assay laboratory using sample cages. Once at the assay laboratory, the samples were received into the laboratory storage compound before</li> </ul>

Criteria	JORC Code explanation	Commentary
<b>Audits or reviews</b>	<ul style="list-style-type: none"> <li>The results of any audits or reviews of sampling techniques and data.</li> </ul>	<p>processing.</p> <ul style="list-style-type: none"> <li>A review was carried out in 2024 by ERM Consultants. This provided a series of recommendations, many of which have been adopted. It did not show any material issues with sampling.</li> <li>In addition, Copperbelt structural specialist Tect Consultants undertook a detailed structural investigation of the Nyungu Central drill core in February and December 2025.</li> <li>The Company's Competent Person for reporting of Mineral Resources and Exploration Targets, Mr. Steve Rose (Rose Mining Geology), visited site during May 2025 to review QAQC, site, software data storage and laboratory protocols used by Prospect at Mumbesghi.</li> <li>Numerous visits have also been made by geologists from Prospect's strategic partners FQM, who have strong footing in the NW Zambian Copperbelt, most notably at Sentinel mine to the northwest, and Kansanshi mine to the NE of Mumbesghi.</li> </ul>

**Section 2 Reporting of Exploration Results**  
(Criteria listed in the preceding section also apply to this section.)

Criteria	JORC Code explanation	Commentary
<b>Mineral tenement and land tenure status</b>	<ul style="list-style-type: none"> <li>Type, reference name/number, location and ownership including agreements or material issues with third parties such as joint ventures, partnerships, overriding royalties, native title interests, historical sites, wilderness or national park and environmental settings.</li> <li>The security of the tenure held at the time of reporting along with any known impediments to obtaining a licence to operate in the area.</li> </ul>	<ul style="list-style-type: none"> <li>The initial Large Scale Prospecting Licence, 16121-HQ-LPL, for Mumbesghi, (formerly Lumwana West) is located approximately 95km west southwest of Solwezi, Zambia. The licence was due to expire on 20/07/2018 and was subsequently renewed as Large-Scale Exploration Licence, 22399-HQ-LEL on 29/12/2017, which was due to expire on 28/12/2021.</li> <li>This latter tenement was revoked, and a similar ground position was then covered by 30426-HQ-LEL, and was initially granted for 4 years to Global Development Corporation (GDC) Consulting Zambia Limited on 02/12/2021, expiring on 01/12/2025.</li> </ul>

Criteria	JORC Code explanation	Commentary
<p><b>Exploration done by other parties</b></p>	<ul style="list-style-type: none"> <li>Acknowledgment and appraisal of exploration by other parties.</li> </ul>	<ul style="list-style-type: none"> <li>GDC held 100% of the 30426-HQ-LEL (now 356 sq km). The licence excluded the northeast portion of the former licence, which incorporated the historic LMW and Kavipopo prospects.</li> <li>Following the signing of the deal on 29<sup>th</sup> May 2024, PSC acquired 85% of the project from GDC, with the licence now held under the name Osprey Resources Limited (85% PSC, 15% GDC).</li> <li>On 5<sup>th</sup> March 2026, PSC's interest increased by 5% to 90%, with GDC then holding a 10% interest in Osprey Resources.</li> <li>The applications for two mining licences were granted in the name of Osprey Resources on the 31<sup>st</sup> March 2025 for 25 years each.</li> <li>These licences are 39465-HQ-LML which covers the 218 sq km of the southern portion of the original licence, and includes Nyungu Central; and 39445-HQ-LML which covers 138 sq km of the northern portion, which includes the West Mwombezi and Kabikupa deposits.</li> <li>The licences are in good standing and no known impediments exist.</li> <li>Roan Selection Trust (1960's-1970's) completed regional soil sampling, augering, wagon drilling and diamond drilling. Drilling completed at Nyungu Central (drillholes MM295 and MM296).</li> <li>AGIP-COGEMA JV (1982-1987) - Systematic regional radiometric traversing, soil and stream sediment sampling, geological mapping, pitting and trenching, largely targeting the uranium potential. No drilling was completed.</li> <li>Phelps Dodge (1990's) - Soil sampling and drilling. Diamond drilling completed at Nyungu Central (drillholes NYU1 and NYU2).</li> <li>ZamAnglo (2000 - 2003) – Regional and infill soil sampling. Geological mapping, IP/CR/CSAMT geophysical surveys. Three phases of RC drilling, two programmes at Mumbezi (MBD00RC001-011 and MBD01RC001-009) and one regional programme (MBD02RC001- 007; 012).</li> </ul>

Criteria	JORC Code explanation	Commentary
		<ul style="list-style-type: none"> <li>• Anglo Equinox JV (2003 – 2008) – unknown but some drill collars located are presumably from this phase of work.</li> <li>• Orpheus Uranium Limited (previously Argonaut Resources NL (2011-2021), various phases of intermittent RC and diamond drilling in JV with Antofagasta plc of Nyungu, Kabikupa and the Lumwana West (LMW) prospects.</li> <li>• Further drilling and exploration works (including geophysics and geochemical surface sampling) were conducted between 2012-2021 on the Nyungu (Central, South, East and North), West Mwombezhi, Kabikupa, Kamafamba, Mufuke, Sharamba and Luamvunda prospects by Orpheus Uranium Limited both internally and under a JV with Antofagasta plc. As part of this geophysical contractors UTS flew a high resolution aeromagnetic and radiometric survey in 2012, which was audited by Earth Maps. This was accompanied by a detailed Landsat structural interpretation and in addition induced polarisation programmes were initiated with mixed results at Nyungu Central and North.</li> </ul>
<b>Geology</b>	<ul style="list-style-type: none"> <li>• Deposit type, geological setting, and style of mineralisation.</li> </ul>	<ul style="list-style-type: none"> <li>• The style of copper and cobalt mineralisation being targeted is Lumwana Mine style, structurally controlled, shear hosted, Cu +/- Co (+/- U and Au), which are developed within interleaved deformed Lower Roan and basement schists and gneisses.</li> <li>• The predominant structural trend at Nyungu is north-south. Southeast – northwest and to a lesser extent southwest-northeast cross-cutting structures have also affected the ore body.</li> <li>• The mineralisation at West Mwombezhi, which is ascribed to a younger mineralisation remobilisation event, during Lufilian deformation, has a broadly southeast-northwest trend.</li> </ul>
<b>Drill hole Information</b>	<ul style="list-style-type: none"> <li>• A summary of all information material to the understanding of the exploration results including a tabulation of the following information for all Material drill holes:</li> </ul>	<ul style="list-style-type: none"> <li>• Exploration results are not being reported.</li> </ul>

Criteria	JORC Code explanation	Commentary
	<ul style="list-style-type: none"> <li>○ easting and northing of the drill hole collar</li> <li>○ elevation or RL (Reduced Level – elevation above sea level in meters) of the drill hole collar</li> <li>○ dip and azimuth of the hole</li> <li>○ down hole length and interception depth</li> <li>○ hole length.</li> <li>● If the exclusion of this information is justified on the basis that the information is not Material and this exclusion does not detract from the understanding of the report, the Competent Person should clearly explain why this is the case.</li> </ul>	
<p><b>Data aggregation methods</b></p>	<ul style="list-style-type: none"> <li>● In reporting Exploration Results, weighting averaging techniques, maximum and/or minimum grade truncations (eg cutting of high grades) and cut-off grades are usually Material and should be stated.</li> <li>● Where aggregate intercepts incorporate short lengths of high grade results and longer lengths of low grade results, the procedure used for such aggregation should be stated and some typical examples of such aggregations should be shown in detail.</li> <li>● The assumptions used for any reporting of metal equivalent values should be clearly stated.</li> </ul>	<ul style="list-style-type: none"> <li>● Exploration results are not being reported.</li> </ul>
<p><b>Relationship between mineralisation widths and intercept lengths</b></p>	<ul style="list-style-type: none"> <li>● These relationships are particularly important in the reporting of Exploration Results.</li> <li>● If the geometry of the mineralisation with respect to the drill hole angle is known, its nature should be reported.</li> <li>● If it is not known and only the down hole lengths are reported, there should be a clear statement to this effect (eg ‘down hole length, true width not known’).</li> </ul>	<ul style="list-style-type: none"> <li>● Exploration results are not being reported.</li> <li>● For Nyungu prospects, due to the dip attitude of the mineralisation, -70° inclined drillholes do not all intersect the mineralisation completely perpendicular.</li> <li>● At West Mwombezhi the drillholes do intersect at close to perpendicular. Drilling is normal to strike of the mineralisation but not completely perpendicular to the dip.</li> <li>● At Kabikupa, the drillholes do intersect at close to perpendicular. Drilling is normal</li> </ul>

Criteria	JORC Code explanation	Commentary
		<p>to strike of the mineralisation but not completely perpendicular to the dip.</p> <ul style="list-style-type: none"> <li>Downhole lengths are being reported, not the true widths.</li> </ul>
<b>Diagrams</b>	<ul style="list-style-type: none"> <li>Appropriate maps and sections (with scales) and tabulations of intercepts should be included for any significant discovery being reported These should include, but not be limited to a plan view of drill hole collar locations and appropriate sectional views.</li> </ul>	<ul style="list-style-type: none"> <li>Exploration results are not being reported.</li> </ul>
<b>Balanced reporting</b>	<ul style="list-style-type: none"> <li>Where comprehensive reporting of all Exploration Results is not practicable, representative reporting of both low and high grades and/or widths should be practiced to avoid misleading reporting of Exploration Results.</li> </ul>	<ul style="list-style-type: none"> <li>Exploration results are not being reported.</li> </ul>
<b>Other substantive exploration data</b>	<ul style="list-style-type: none"> <li>Other exploration data, if meaningful and material, should be reported including (but not limited to): geological observations; geophysical survey results; geochemical survey results; bulk samples – size and method of treatment; metallurgical test results; bulk density, groundwater, geotechnical and rock characteristics; potential deleterious or contaminating substances.</li> </ul>	<ul style="list-style-type: none"> <li>For Nyungu Central and West Mwombezhi, coincident Airborne Electromagnetic (AEM) chargeability IP anomalies are apparent with the copper mineralisation and hence are considered a useful exploration method for targeting additional copper mineralisation at the Mumbezhi Project.</li> <li>This was backed up by downhole geophysical surveying measurements completed by Wireline Premier Downhole Geophysics (Solwezi), which delineated strong chargeability, high conductivity and low resistivity from the graphitic, kyanite-rich ore schist which typically hosts the copper mineralisation identified a Mumbezhi to date.</li> <li>At Kabikupa, whilst coincident Airborne Electromagnetic (AEM) chargeability anomalies are not apparent, surface chargeability IP anomalies are apparent with the copper mineralization.</li> <li>A coincident Cu surface geochemical anomaly to <math>\geq 200</math>ppm Cu is considered anomalous to background.</li> <li>Bulk density information was captured regularly from the Phase 1 and Phase 2 diamond drilling programmes at Nyungu Central, Kabikupa and West Mwombezhi.</li> <li>This data complements the historical measurements completed for Nyungu Central by Orpheus Uranium.</li> </ul>

Criteria	JORC Code explanation	Commentary
		<ul style="list-style-type: none"> <li>• Flotation test work completed on sulphide materials from the Nyungu Central and Kabikupa deposits returned high-grade saleable copper concentrates with excellent recoveries during 2025.</li> <li>• Test work programmes utilised a simple flowsheet, similar to that used at other operations in the Zambian Copper Belt.</li> <li>• Representative fresh composite sample from Nyungu Central achieved a copper concentrate grading 24.6% Cu &amp; 9,000 ppm Co at 96.2% Cu recovery after a single cleaning stage.</li> <li>• After two cleaning stages, a copper concentrate grading 33.3% Cu &amp; 2,800 ppm Co was produced with 90.1% Cu recovery.</li> <li>• Primary grind size can be coarsened from 150µm up to approx. 250µm with minimal impact on copper recovery delivering positive implications for future plant capital and operating costs.</li> <li>• Relatively high graphitic carbon levels (up to 4.8% TGC) presented no barrier to achieving good quality copper concentrates, with the use of carboxymethylcellulose (CMC), as an effective depressant for graphitic carbon.</li> <li>• In addition, metallurgical test work on fresh sulphide Kabikupa composite sample achieved a copper concentrate of 27.5% Cu and 310 ppm Co at 95.3% Cu recovery after only one cleaning stage.</li> <li>• The West Mwombezhi copper mineralisation appears similar to Kabikupa, although no met test work has been completed at West Mwombezhi to date.</li> <li>• Nyungu Central fresh composite achieved a copper concentrate of 24.6% Cu and 0.9% Co at 96.2% Cu recovery after a single cleaning stage.</li> <li>• Nyungu Central transition composite achieved a copper concentrate of 32.1% Cu and 9.1% Co at 81.4% Cu recovery after two cleaning stages.</li> </ul>
<b>Further work</b>	<ul style="list-style-type: none"> <li>• The nature and scale of planned further work (eg tests for lateral extensions or depth extensions or large-scale step-out drilling).</li> <li>• Diagrams clearly highlighting the</li> </ul>	<ul style="list-style-type: none"> <li>• The Company proposes to undertake Scoping Studies and Feasibility Studies and seek to bring the Mumbezhi Project into commercial copper production as soon as is practicable, if economic to do</li> </ul>

Criteria	JORC Code explanation	Commentary
	<p>areas of possible extensions, including the main geological interpretations and future drilling areas, provided this information is not commercially sensitive.</p>	<p>so.</p> <ul style="list-style-type: none"> <li>Prospect will also review all other substantive copper anomalies defined on the existing licence as potential satellite open pit feed options to a central mining and processing facility hub, likely situated proximal to the prospective Nyungu series of deposits, which are presently considered the flagship assets at the Project.</li> <li>Follow up termite hill sampling continues at Induced Polarisation chargeability anomalies at Sharamba, as required.</li> <li>Regional exploratory termite hill sampling is also being undertaken at Kamafamba, Nyungu Northwest, Shikezi, Luamvunda, Chalamba and Chipimpa.</li> <li>Three phases of development drilling are planned for Nyungu Central, with at least three of the new airborne electromagnetic (AEM) anomalies identified in late 2025 (including Chipimpa, Sharamba and Nyungu South) for potential exploratory drill testing in 2026, for approximately 26,000m total (DD, RC and aircore).</li> <li>The Phase 3 programme for 2026, is being driven and guided by the outcomes of the recently updated Mineral Resource estimates and ongoing reviews of the structural geology interpretations being provided by TECT Consultants and input from the FQM Technical Team.</li> </ul>

### Section 3 Estimation and Reporting of Mineral Resources

(Criteria listed in Section 1, and where relevant Section 2, also apply to this section)

Criteria	JORC Code explanation	Commentary
<b>Database Integrity</b>	<ul style="list-style-type: none"> <li>Measures taken to ensure that data has not been corrupted by, for example, transcription or keying errors, between its initial collection and its use for Mineral Resource estimation purposes.</li> </ul>	<ul style="list-style-type: none"> <li>Data collected in the field has been validated prior to and during upload to the master database. Field data collection sheets and master database have validation controls on data entry (i.e. a filter in the input Excel sheets). Pre-2014 data was verified before importing into the GeoSpark database. Any queries or errors are reported back to the Database Manager for correction before a new export is delivered.</li> </ul>

Criteria	JORC Code explanation	Commentary
	<ul style="list-style-type: none"> <li>Data validation procedures used.</li> </ul>	<ul style="list-style-type: none"> <li>Prospect uses GeoSpark. Data is entered directly into the database. Rules have been set up to ensure only valid data is entered.</li> <li>Once data has been entered it is plotted up using Micromine or Leapfrog software to check against neighbouring holes.</li> <li>The company's DBA imports all electronic data received into the GeoSpark database</li> <li>The GeoSpark database is a MS SQL Server database, which is relational and normalised. As a result of normalisation, the following data integrity categories exist:               <ul style="list-style-type: none"> <li>Entity Integrity: No duplicate rows in a table, eliminated redundancy and chance of error.</li> <li>Domain Integrity: Enforces valid entries for a given column by restricting the type, the format, or a range of values.</li> <li>Referential Integrity: Rows cannot be deleted which are used by other records.</li> <li>User-Defined Integrity: Logging rules and validation codes set up by the company.</li> </ul> </li> <li>Data extracted from the database is validated visually in Micromine software and when using the data any errors regarding incorrect locations, missing collar information, logging, sampling, and downhole survey data and overlapping intervals are highlighted.</li> </ul>
<b>Site Visits</b>	<ul style="list-style-type: none"> <li>Comment on any site visits undertaken by the Competent Person and the outcome of those visits.</li> <li>If no site visits have been undertaken indicate why this is the case.</li> </ul>	<ul style="list-style-type: none"> <li>Mr. Steve Rose (Rose Mining Geology Consultants) is the Competent Person. He has visited Mumbezhi area many times when working as a consultant geologist in the 1990's, and again in the 2010's when carrying out consulting work at FQM's Kansanshi Copper Mine. This has provided knowledge of the geological controls on this mineralisation.</li> <li>Steve Rose visited the Mumbezhi Copper Project site during May 2025, at the start of the Phase 2 drilling programme being actively carried out by Prospect.</li> <li>Steve Rose indicated and concluded that he was satisfied that Prospect Resources were aligned with industry standard</li> </ul>

Criteria	JORC Code explanation	Commentary
<b>Geological Interpretation</b>	<ul style="list-style-type: none"> <li>Confidence in (or conversely, the uncertainty of ) the geological interpretation of the mineral deposit.</li> <li>Nature of the data used and of any assumptions made.</li> <li>The effect, if any, of alternative interpretations on Mineral Resource estimation.</li> <li>The use of geology in guiding and controlling Mineral Resource estimation.</li> <li>The factors affecting continuity both of grade and geology.</li> </ul>	<p>practices at the Project, and in some areas working at best practice.</p> <ul style="list-style-type: none"> <li>There is a reasonable level of confidence in the geological interpretation of the mineralisation at Nyungu Central, and lower confidence at West Mwombezi, reflecting the relative amount of drilling.</li> <li>The Nyungu Central deposit consists of a series of stacked thrust hosted mineralised ore schists, that dip moderately to the west. The existence of these north-south trending thrusts has been confidently interpreted from the 2011 UTS aeromagnetic and radiometric survey.</li> <li>Numerous small-scale southeast-northwest and southwest-northeast trending faults are also interpreted from the same geophysics and can be interpreted as controlling certain drainages.</li> <li>The position and general morphology of the mineralisation, which has no surface exposure was determined by soil geochemistry and Induced Polarisation surveys between 2000 – 2010, prior to the 2011 Argonaut Resources NL (now Orpheus Uranium Limited) drilling programmes.</li> <li>Oxide, transition and (fresh) sulphide domains were determined on the degree of weathering and associated mineral assemblages.</li> <li>There is a high degree of confidence in the interpretation of the copper mineralisation based on the relatively tight drill grid, and the relative predictability of the depths of the mineralised ore sheets that were intercepted during Prospect Resources' most recent Phase 1 and Phase 2 drilling programmes.</li> <li>The West Mwombezi satellite deposit is hosted by similar mica-schists and gneisses and has a very similar mineral assemblage to Nyungu Central, but is seemingly younger, and less structurally complex. The ore zones form two, possibly three, sub-parallel layers within a broader stratabound (stacked or repeated) sulphide assemblage that</li> </ul>

Criteria	JORC Code explanation	Commentary
		<p>strikes for 1.5km southwest-northeast and dips at approx. 30° to the northwest.</p> <ul style="list-style-type: none"> <li>• Surface mapping of limited mineralised outcrop, drillhole intercept logging, assay results and detailed geological logging have formed basis for the geological interpretation for West Mwombezi.</li> <li>• Geological continuity is implied between drillholes and conforms well to the anticipated geological model based on the interpretation of regional and local geology, and its association with mineralisation at West Mwombezi.</li> <li>• The data does not readily offer alternative interpretations at present. In places, the precise limits and geometry cannot be absolutely defined due to the limitations of the current drill coverage and the structural complexity.</li> <li>• Further work is required to better define the geometry and limits of the mineralised zones, but no significant downside changes to the interpreted mineralised volume are anticipated.</li> <li>• Overall, there is a reasonable level of confidence in the geological interpretation of the mineralisation at Nyungu Central, and at West Mwombezi, reflecting the relative amount of drilling now completed by Prospect at those deposits.</li> <li>• The position and general morphology of the mineralisation at West Mwombezi, which has no surface exposure, was determined initially by soil geochemistry and Induced Polarisation surveys between 2000 – 2010, prior to the historical 2011 Argonaut Resources NL (now Orpheus Uranium Limited) drilling programmes.</li> <li>• The grade and lithological interpretation form the basis for the modelling. Lithological envelopes defining the prospective mineralisation within which the grade estimation have been completed.</li> <li>• Weathering domain and lithology orientation and foliation, affect the continuity both of grade and geology.</li> </ul>
<b>Dimensions</b>	<ul style="list-style-type: none"> <li>• The extent and variability of the Mineral Resource expressed as length (along strike or</li> </ul>	<ul style="list-style-type: none"> <li>• The site of Nyungu Central is essentially a flat lying wooded plain. The ore body extends approximately 1,700m north-</li> </ul>

Criteria	JORC Code explanation	Commentary
	<p>otherwise), plan width, and depth below surface to the upper and lower limits of the Mineral Resource.</p>	<p>south, and ~1,000m east-west (based on the new deep intersection within NCDD013).</p> <ul style="list-style-type: none"> <li>The mineralisation has been intercepted to ~600m below surface and remains open down dip to the west.</li> <li>Recent airborne electromagnetic chargeability anomalies indicate that the deposit also has a similar footprint to that described above.</li> <li>The site of West Mwombezhi is essentially a flat lying wooded plain. The ore body footprint extends approximately 2,000m north-south, and ~1,400m east-west.</li> <li>The mineralisation has been intercepted to ~360 m below surface and remains open down dip to the northwest.</li> </ul>
<p><b>Estimation and Modelling Techniques</b></p>	<ul style="list-style-type: none"> <li>The nature and appropriateness of the estimation technique(s) applied and key assumptions, including treatment of extreme grade values, domaining, interpolation parameters and maximum distance of extrapolation from data points. If a computer assisted estimation method was chosen include a description of computer software and parameters used.</li> <li>The availability of check estimates, previous estimates and/or mine production records and whether the Mineral Resource estimate takes appropriate account of such data.</li> </ul>	<ul style="list-style-type: none"> <li>For Nyungu Central prospect, grade estimation was carried out using ordinary kriging, with inverse distance used as a check estimate. The 1 m composite top-cut dataset was used for the grade interpolation. Estimation of the resource was completed using Micromine software. The mineralisation domains, resource category and lithology were coded to the block model. Density data was also imported.</li> <li>For West Mwombezhi, grade estimation was carried out using Inverse Distance Weighting only (reflecting the relatively limited dataset and difficulty in plotting meaningful variograms). The 1m composite top-cut dataset was used for the grade interpolation.</li> <li>Estimation of the resource was completed using Micromine software. The mineralisation domains, resource category and lithology were coded to the block model. Density data was also imported.</li> <li>For West Mwombezhi, an informal estimate was carried out using Micromine's Grade Co-Pilot method to provide a check.</li> <li>For Nyungu Central the Ordinary Kriged estimate has been reported. As part of the model validation this has been compared</li> </ul>

Criteria	JORC Code explanation	Commentary
	<ul style="list-style-type: none"> <li>• The assumptions made regarding recovery of by-products.</li>   <li>• Estimation of deleterious elements or other non-grade variables of economic significance (eg sulphur for acid mine drainage characterisation).</li> <li>• In the case of block model interpolation, the block size in relation to the average sample spacing and the search employed.</li>   <li>• Any assumptions behind modelling of selective mining units.</li> <li>• Any assumptions about correlation between variables.</li> <li>• Description of how the geological interpretation was used to control the resource estimates.</li>   <li>• Discussion of basis for using or not using grade cutting or capping.</li> </ul>	<p>to an Inverse Distance estimate. Additionally, an informal estimate was carried out using Micromine's Grade Co-Pilot method to provide a check.</p> <ul style="list-style-type: none"> <li>• The MRE's include copper, gold and cobalt estimations. Copper is assumed as the economic metal. A CuEq% value has been calculated using grades of the three metals and accountability of likely recoveries and conservative metal commodity prices (see Appendix 2).</li> <li>• No potentially deleterious elements have been considered, although uranium deportment within Nyungu Central has not been investigated in detail to date.</li> <li>• For Nyungu Central, a 3D block model was generated to enable grade estimation. The selected block size was based on the geometry of the domain interpretation and the data configuration. A block model was created using 10.0 mE x 10.0 mN x 5.0 mRL parent blocks. Sub-cells were generated down to 1 mE x 1 mN x 1 mRL as appropriate to honour wireframe domains and geological interpretations during model construction. This compares with infill drill spacing of 40-120 m.</li> <li>• For West Mwombezhi, a 3D block model was generated to enable the grade estimation. The selected block size was based on the geometry of the domain interpretation and the data configuration. A block model was created using 25.0 mE x 25.0 mN x 5.0 mRL parent blocks. Sub-cells were generated down to 2.5 mE x 2.5 mN x 0.5 mRL as appropriate to honour wireframe domains and geological interpretations during model construction. This compares with infill drill spacing of 100-200m centres.</li> <li>• No selective mining units were assumed in this estimate.</li> <li>• No strong correlations were found between the grade variables.</li> <li>• Geological interpretation was used as a basis for mineralisation modelling. Lower cut-off grades of 0.15% Cu (Nyungu Central) and 0.1% Cu (West Mwombezhi) was used for copper domains. Hard boundaries between the grade envelopes</li> </ul>

Criteria	JORC Code explanation	Commentary
	<ul style="list-style-type: none"> <li>The process of validation, the checking process used, the comparison of model data to drill hole data, and use of reconciliation data if available.</li> </ul>	<p>were used to select sample populations for grade estimation.</p> <ul style="list-style-type: none"> <li>Copper mineralisation wireframes was interpreted using implicit vein modelling tools within Micromine for Nyungu Central.</li> <li>Copper mineralisation at West Mwombezhi was interpreted using conventional sectional strings and wireframes, using Micromine.</li> <li>Top cuts were used to treat the high-grade outliers of the domains. Top cuts were based on review of the domain histogram and log probability plot. Top-cut values at Nyungu Central vary between weathering domain. In the oxide domain, no top cut is required; in the transitional domain a top-cut of 1.8% was applied to Cu grade, with no top-cutting necessary for Au and Co. For the fresh domain Au was cut to 0.6 g/t Au, Co was cut to 0.46%, and Cu was cut to 5%.</li> <li>No top-cutting was needed for the West Mwombezhi samples.</li> <li>Validation of the block model consisted of comparison of the block model volume to the wireframe volume. Grade estimates were validated by statistical comparison with the drill data, and visual comparison of grade trends in the model with the drill data trends. Additionally, swath plots were generated to verify block model grades vs drill hole grades along easting, northing and elevation slices.</li> </ul>
<b>Moisture</b>	<ul style="list-style-type: none"> <li>Whether the tonnages are estimated on a dry basis or with natural moisture, and the method of determination of the moisture content.</li> </ul>	<ul style="list-style-type: none"> <li>Tonnages are estimated on a dry basis.</li> </ul>
<b>Cut-Off Parameters</b>	<ul style="list-style-type: none"> <li>The basis of the adopted cut-off grade(s) or quality parameters applied.</li> </ul>	<ul style="list-style-type: none"> <li>By statistical analysis of the TCu assay data, and by comparison with neighbouring operations (notably Sentinel and Lumwana), initial cut-off grades of 0.15% Cu, 0.2% Cu and 0.3% Cu were delineated.</li> <li>This was broadly based on a metallurgical recovery of 85%, copper price of US\$11,500/t, and mining/milling costs of US\$10.80/t and royalty of 5%.</li> </ul>

Criteria	JORC Code explanation	Commentary
<b>Mining factors or assumptions</b>	<ul style="list-style-type: none"> <li>Assumptions made regarding possible mining methods, minimum mining dimensions and internal (or, if applicable, external) mining dilution. It is always necessary as part of the process of determining reasonable prospects for eventual economic extraction to consider potential mining methods, but the assumptions made regarding mining methods and parameters when estimating Mineral Resources may not always be rigorous. Where this is the case, this should be reported with an explanation of the basis of the mining assumptions made.</li> </ul>	<ul style="list-style-type: none"> <li>The assumed mining method would be standard drill, blast, load and haul using excavator and truck configuration for an open pit (cast) operation.</li> </ul>
<b>Metallurgical factors or assumptions</b>	<ul style="list-style-type: none"> <li>The basis for assumptions or predictions regarding metallurgical amenability. It is always necessary as part of the process of determining reasonable prospects for eventual economic extraction to consider potential metallurgical methods, but the assumptions regarding metallurgical treatment processes and parameters made when reporting Mineral Resources may not always be rigorous. Where this is the case, this should be reported with an explanation of the basis of the metallurgical assumptions made.</li> </ul>	<ul style="list-style-type: none"> <li>A metallurgical hole (HQ diameter) at Nyungu Central intercepted all expected ore domains of mineralisation (oxide, transition and fresh), was completed (Hole ID: NCMT002).</li> <li>The selected Nyungu Central samples for met test work weighed 224kg and were received in Australia in December 2024 with metallurgical test work completed in Q2 2025 completion.</li> <li>No direct metallurgical test work has been carried out at West Mwombezhi so far. However, test work has been carried out on the nearby Kabikupa deposit, which has similar geology and mineralisation styles.</li> <li>It is anticipated that West Mwombezhi will have similar favorable metallurgical characteristics as Kabikupa.</li> <li>Technical studies are being undertaken by Core Metallurgy (previously owned by Mt Isa Mines with rich history in copper technical studies).</li> <li>Core Metallurgy carried out initial metallurgical scoping test work for Mumbezhi, under the supervision of Argonaut during 2019-2020.</li> <li>The analytical results from the metallurgical samples will feed into the geo-metallurgical framework development for Mumbezhi.</li> </ul>

Criteria	JORC Code explanation	Commentary
<b>Environmental factors or assumptions</b>	<ul style="list-style-type: none"> <li>Assumptions made regarding possible waste and process residue disposal options. It is always necessary as part of the process of determining reasonable prospects for eventual economic extraction to consider the potential environmental impacts of the mining and processing operation. While at this stage the determination of potential environmental impacts, particularly for a greenfields project, may not always be well advanced, the status of early consideration of these potential environmental impacts should be reported. Where these aspects have not been considered this should be reported with an explanation of the environmental assumptions made.</li> </ul>	<ul style="list-style-type: none"> <li>Initial site layout designs have considered tailings emplacement locations adjacent to Nyungu Central, but not West Mwombezhi. At this stage, no mining waste dump or long-term stockpiles locations have been planned. There is a sufficient land holding for adequate waste dumping.</li> <li>It is assumed that waste rock will be dumped into an engineered waste rock dump, with a design to control acid mine drainage.</li> </ul>
<b>Bulk Density</b>	<ul style="list-style-type: none"> <li>Whether assumed or determined. If assumed, the basis for the assumptions. If determined, the method used, whether wet or dry, the frequency of the measurements, the nature, size and representativeness of the samples.</li> <li>The bulk density for bulk material must have been measured by methods that adequately account for void spaces (vugs, porosity, etc), moisture and differences between rock and alteration zones within the deposit.</li> <li>Discuss assumptions for bulk density estimates used in the evaluation process of the different materials.</li> </ul>	<ul style="list-style-type: none"> <li>Whilst density measurements have been carried out at West Mwombezhi, the dataset is still relatively small. Instead, reference has been made to the nearby Nyungu Central deposit where:</li> <li>Bulk Density has been determined by using the Archimedes immersion method. Measurements were completed on 317 individual drill core measurements from 14 DD holes on Nyungu Central, and 61 measurements from 3 out of the 5 holes drilled in Kabikupa. The samples were oven dried, weighed, coated with wax then weighed dry and in water using a Density Scale.</li> <li>The average bulk density for Nyungu Central has been approximated at <math>2.82\text{g/cm}^3</math> - being a straight average of the measured samples in the mixed and fresh zone, as only a few measurements could be done in the oxide zone which is predominantly too weathered for the samples to withstand the method.</li> <li>On this basis a single bulk density value of <math>2.80\text{g/cm}^3</math> has been applied at West Mwombezhi for this MRE.</li> <li>Density has been applied on the basis of</li> </ul>

Criteria	JORC Code explanation	Commentary
<b>Classification</b>	<ul style="list-style-type: none"> <li>The basis for the classification of the Mineral Resources into varying confidence categories.</li> <li>Whether appropriate account has been taken of all relevant factors (ie relative confidence in tonnage/grade estimations, reliability of input data, confidence in continuity of geology and metal values, quality, quantity and distribution of the data).</li> <li>Whether the result appropriately reflects the Competent Person's view of the deposit.</li> </ul>	<p>weathering domain for Nyungu Central.</p> <ul style="list-style-type: none"> <li>The Mineral Resources are classified as Inferred and Indicated, considering the level of geological understanding of the deposit, quality of samples, density data, drill hole spacing and sampling and assaying processes.</li> <li>The following initial classification approach was adopted for Nyungu Central:</li> <li>The Mineral Resource was classed as Indicated if a block was assigned a grade in the first and second estimation pass and reviewing kriging values for slope and kriging efficiency.</li> <li>The Mineral Resource was classed as Inferred if assigned a grade in the third estimation pass and reviewing kriging values for slope and kriging efficiency.</li> <li>Once blocks were coloured up with these codes, the classification was simplified to remove "spotty dogs" and applied based on strings and wireframes.</li> <li>For West Mwombezi, the Mineral Resource was classified as Inferred, considering the level of geological understanding of the deposit, quality of samples, density data, drill hole spacing and sampling and assaying processes.</li> <li>The following MRE classification approach was adopted for West Mwombezi: The resource was classed as Inferred if assigned a grade in the third estimation pass and based on an overall average drillhole spacing of 200m.</li> <li>The classifications of the MREs and appropriately reflect the view of the Competent Person.</li> </ul>
<b>Audits or reviews</b>	<ul style="list-style-type: none"> <li>The results of any audits or reviews of Mineral Resource estimates.</li> </ul>	<ul style="list-style-type: none"> <li>No external audits or reviews have been completed for the Mineral Resource estimate.</li> <li>An internal peer review of the Nyungu Central estimate was carried out by a colleague of Steve Rose, as part of the Rose Mining Geology (RMG) process.</li> </ul>
<b>Discussion of relative accuracy / confidence</b>	<ul style="list-style-type: none"> <li>Where appropriate a statement of the relative accuracy and confidence level in the Mineral Resource estimate using an approach or procedure deemed appropriate by the Competent</li> </ul>	<ul style="list-style-type: none"> <li>The relative accuracy of the Mineral Resource estimates are reflected in the reporting of the Mineral Resources as per the guidelines of the 2012 JORC Code.</li> <li>The statement relates to the global estimates of tonnes, grades and</li> </ul>

Criteria	JORC Code explanation	Commentary
	<p>Person. For example, the application of statistical or geostatistical procedures to quantify the relative accuracy of the resource within stated confidence limits, or, if such an approach is not deemed appropriate, a qualitative discussion of the factors that could affect the relative accuracy and confidence of the estimate.</p> <ul style="list-style-type: none"> <li>• The statement should specify whether it relates to global or local estimates, and, if local, state the relevant tonnages, which should be relevant to technical and economic evaluation. Documentation should include assumptions made and the procedures used.</li> <li>• These statements of relative accuracy and confidence of the estimate should be compared with production data, where available.</li> </ul>	<p>calculated contained metals. There has been no trial mining or production undertaken to date at the Mumbhezhi Copper Project.</p> <ul style="list-style-type: none"> <li>• The Mineral Resource statement relates to a global tonnage and grade estimate. Grade estimates have been made for each block in the block model.</li> <li>• Mumbhezhi Copper Project is a prospect and is not in production.</li> </ul>

For personal use only