

FURTHER AUGER REE RESULTS EXTEND IAC MINERALISATION AT EAST SALINAS, BRAZIL

HIGHLIGHTS:

- **Additional assay results from East Salinas continue to confirm rare earth element (REE) enrichment within extensive surface saprolite amenable for ionic adsorption (IAC)¹ leaching**
- **Assays received from the remaining two auger holes confirm multiple TREO² and NdPr³ intercepts within saprolite, including:**
 - **13m @ 2,418ppm TREO and 21% NdPr from surface (EAS-AD-0001), includes 9m @ 2,859ppm TREO and 22% NdPr from surface and 7m @ 3,020ppm TREO and 23% NdPr from 2m**
 - **7m @ 2,621ppm TREO and 20.5% NdPr from surface (EAS-AD-0002), includes 6m @ 2,800ppm TREO and 21% NdPr from surface and 3m @ 3,307ppm TREO and 22% NdPr from 1m**
 - **Peak grade of 4,874ppm TREO @ 25% NdPr from 8 - 9m (EAS-AD-0001)**
 - **Peak MREO recovery of 84% from 8 - 9m (EAS-AD-0001)**
- **Mineralisation hosted within the saprolite overlying Medina Intrusive Granite Complex, consistent with granite-derived IAC systems**
- **Results from two auger holes are reported alongside an additional 20 leach test recovery results**
- **Further auger drilling program planned to define the extent and thickness of saprolite mineralisation at East Salinas**
- **Deep air-core and diamond drilling at Charlie Creek underway to follow up >1% TREO mineralisation at depth**

Enova Mining Limited (ASX: ENV) (Enova or the Company) is pleased to report additional auger assay results from the maiden drilling program at the East Salinas Project, Brazil, which continue to support a district-scale, saprolite-hosted ionic adsorption clay (IAC) rare earth element (REE) mineral system.

Drilling has confirmed REE mineralisation from surface across multiple lithological units, with pervasive mineralisation indicating a large and continuous saprolite-hosted IAC REE system. The auger assay results further refine grade distribution and validate higher-grade zones within the broader mineralised envelope.

¹ Ionic Adsorption Clays, REE: Rare Earth Element

² TREO: Total Rare Earth Oxide plus Y₂O₃ ppm (1%TREO=10000 ppm TREO)

³ Neodymium-Praseodymium (NdPr) Oxide and Total Rare Earth Oxide (TREO) Ratio

The assays confirm continuity of REE mineralisation at depth and support the project's magnetic REE targets identified in previous geochemical surveys. These results reinforce East Salinas as a priority target for ongoing exploration and further resource delineation drilling.

Enova Mining CEO / Executive Director Eric Vesel commented:

"These auger holes drilled by our team to full depth demonstrate that Enova has capability to complete the next resource drilling campaign without reliance on contract drilling. This represents a significant cost saving and gives Enova the flexibility to add drilling where and when required.

The holes further support the tenure and continuity of the saprolite-hosted mineralisation. Several downhole intervals returned the highest IAC REE de-absorption recoveries recorded at East Salinas to date. Our focus remains on the recovery of high-value magnet rare earths including Nd, Pr, Dy and Tb.

We've appointed local specialists and research facilities to optimise leaching and support geo-metallurgical modelling as we advance the project. The next phase of drilling is being planned to further define the scale and continuity of the mineralised saprolite system.

East Salinas continues to emerge as a significant IAC-style rare earth project in Brazil."

Rare earth grades confirm mineralisation

Assay results have been received from additional auger drill samples analysed by SGS Geosol Laboratory. Samples which were collected from saprolite veneer overlying granite and granodiorite suites at Bald Hill and Naked Hill within the Medina Intrusive Complex. The results increase geological confidence in intrusive-derived IAC REE mineralisation within surface saprolite clay and will support future resource delineation drilling programs.

The drilling program comprised two auger hole and 14 diamond holes for a total of 1,009.13 metres (Table 1) across Bald Hill, Naked Hill, Hairy Hill and Flat Hill. Drilling was designed to test the extent and continuity of REE mineralisation across the Medina Intrusive Complex.

Hole type	Target	Number of holes	Metreage (m)
Diamond Drilling	Bald Hill	2	150.07
Diamond Drilling	Naked Hill	6	502.14
Diamond Drilling	Hairy Hill	3	191.97
Diamond Drilling	Flat Hill	3	145.45
Auger drilling	Bald & Naked Hill	2	19.50
Total		16	1,009.13

Table 1: Total drilling statistics in East Salinas

Auger samples returned multiple high-grade rare earth intercepts, with several assays exceeding 1,000 ppm total rare earth oxides (TREO) (Figure 1). Key intercepts in saprolite include:

- **13m @ 2,418ppm TREO and 21% NdPr from surface (EAS-AD-0001), includes 9m @ 2,859ppm TREO and 21.6% NdPr from subface and 7m @ 3,020ppm TREO and 22.5% NdPr from 2m**

- **7m @ 2,621ppm TREO and 20.5% NdPr from surface (EAS-AD-0002), includes 6m @ 2,800ppm TREO and 21% NdPr from surface and 3m @ 3,307ppm TREO and 22% NdPr from 1m**
- **Peak head grade of 4,874ppm TREO @ 25% NdPr from 8 - 9m (EAS-AD-0001)**
- **Peak MREO recovery of 84% from 8 - 9m (EAS-AD-0001)**

Previously reported (9 April 2026)

- 9m @ 1,677ppm TREO and 23% NdPr from surface (EAS-DD-0005), includes 2m @ 2,096ppm TREO and 25% NdPr from 3m
- 17m @ 5,000ppm TREO and 19% NdPr from surface (EAS-DD-0006), includes 16m @ 5,137ppm TREO and 20% NdPr from 1m
- 12m @ 1,866ppm TREO and 19% NdPr from surface (EAS-DD-0007), includes 6.4m @ 2,387ppm TREO and 20% NdPr from surface
- 6m @ 3,311ppm TREO and 20% NdPr from 14m (EAS-DD-0008) includes 5m @ 3,772ppm TREO and 19% NdPr and 3m @ 4,667ppm TREO and 16% NdPr from 15m
- 11m @ 1,656ppm TREO and 12% NdPr from 1m (EAS-DD-0009)
- 8m @ 1,508ppm TREO and 19% NdPr from surface (EAS-DD-0010)
- 15m @ 1,568ppm TREO and 19% NdPr from surface (EAS-DD-0011)
- 13m @ 1,397ppm TREO and 19% NdPr from 7m (EAS-DD-0012)
- Peak grade of 12,732ppm (1.27%) TREO @ 24% NdPr from 7 - 8m (EAS-DD-0006)

Previously reported (10 February 2026)

- 12m @ 2,741ppm TREO and 23% NdPr from surface (EAS-DD-0001)
- 8m @ 1,482ppm TREO and 22.1% NdPr from surface (EAS-DD-0002)
- 13m @ 1,654ppm TREO and 16.8% NdPr from surface (EAS-DD-0003)
- 7 m @ 3,467 ppm TREO and 21.5% NdPr from surface (EAS-DD-0004)

Progress at East Salinas

Lithological data from the auger holes indicate strong geological continuity across saprolitic clay developed over multiple intrusive bodies at the Naked Hill, Bald Hill, Hairy Hill and Flat Hill targets (Figure 1). These results support the interpretation that the targets form part of a larger intrusive-derived mineral system within the Medina Granitic Complex.

Auger drilling intersected consistent lithologies and mineralised intervals across several intrusive units, suggesting that surface outcrops represent exposed portions of a more extensive rare earth bearing saprolite system. This supports the Company's exploration strategy integrating geophysical data, hyperspectral analysis and targeted drilling to assess the scale, geometry and continuity of mineralisation across the project area.

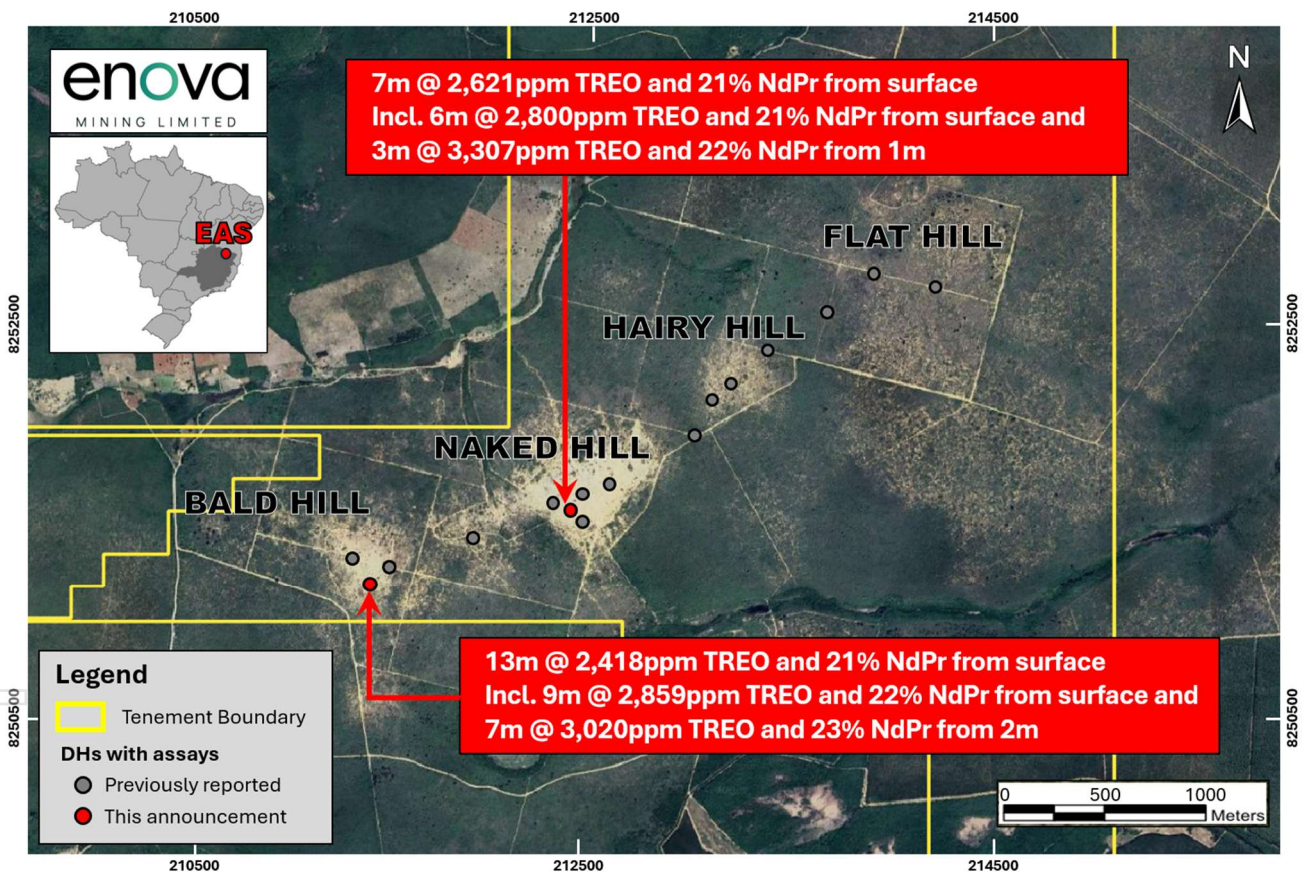


Figure 1: Auger holes completed, and significant assays result highlights

Drilling and Sampling

Portable auger drilling at the Bald Hill target at East Salinas tested near-surface saprolite-hosted REE mineralisation (Figure 2).

Saprolite recovered from hole EAS-AD-0001 displayed thick intervals of soft, clay-rich, reddish-brown material consistent with weathered profiles targeted for IAC REE mineralisation (Figure 3 and 4).

For personal use only



Figure 2: Auger site EAS-AD-0001 in Bald Hill target, East Salinas.



Figure 3 and 4: Auger Sapolite Sample EAS.AD.006 at hole EAS-AD-0001

A schematic interpreted cross section through the Bald and Naked Hill targets illustrates a laterally extensive weathering profile developed over the underlying bedrock. The section highlights a thick near-surface sapolite horizon interpreted to host REE enrichment consistent with an IAC) mineralisation model (Figure 5).

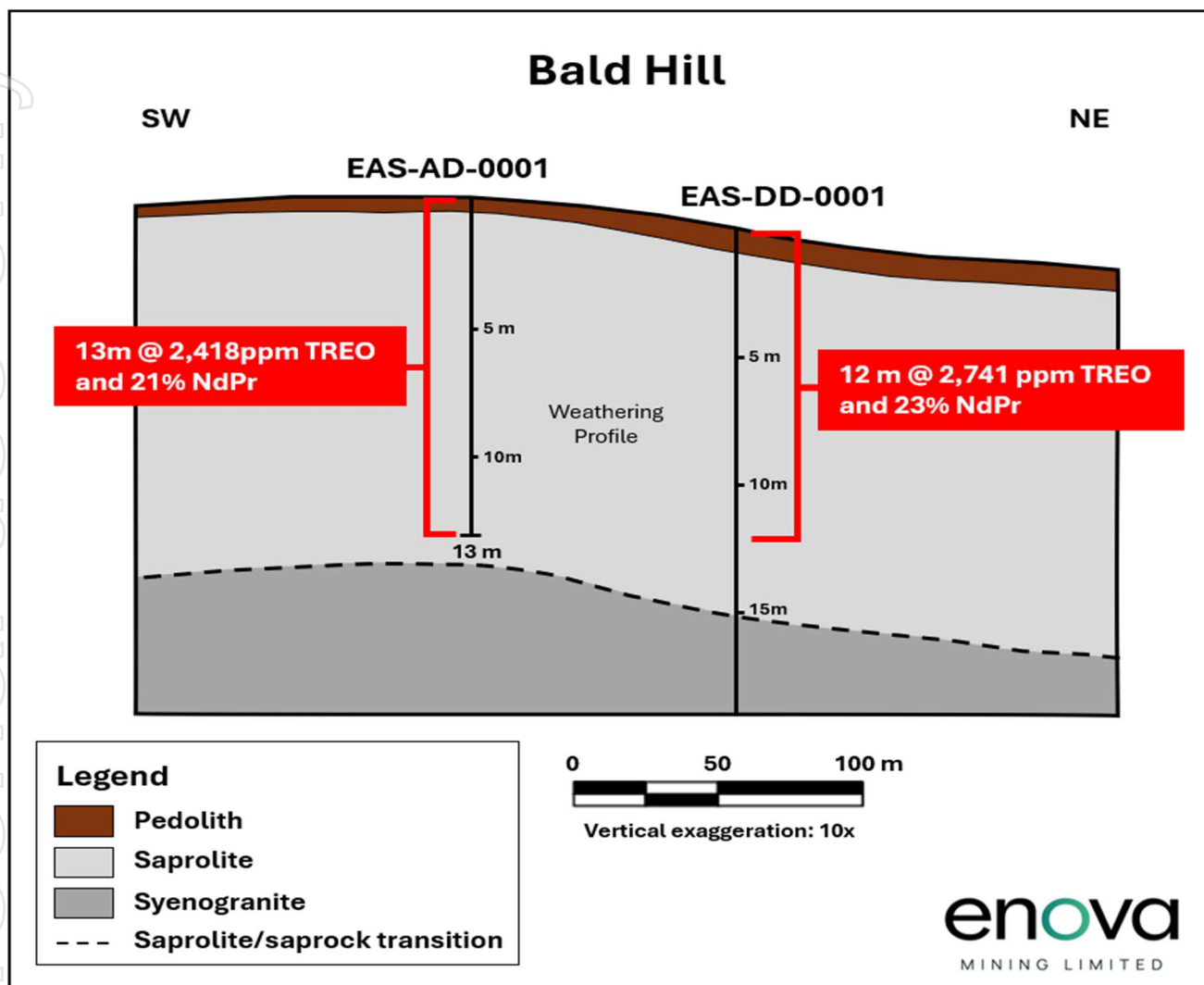


Figure 5: Schematic interpreted cross section through EAS-AD-0001 (reported this release) and EAS-DD-0001 (previously announced) in East Salinas

Metallurgical test work

Metallurgical test work was undertaken to assess potential processing pathways. Leach testing was conducted by SGS Geosol Laboratory, Vespasiano, using a standard IAC leach protocol on 20 additional saprolite samples from auger holes EAS-AD-0001 and EAS-AD-0002. An additional 20 leach test recovery results are reported in this announcement. Sampling comprised consecutive one metre samples.

Standard leach testing provides an initial indication of IAC leach performance. Further testing is planned to optimise leach conditions and improve recoveries during the next phase of drilling.

A summary of the key leach recovery results is presented in Table 2.⁴

⁴ TREO: Total Rare Earth Oxide Recovery %; LREO: Light Rare Earth Oxide Recovery %; HREO: Heavy Rare Earth Oxide Recovery %; NdPr: Nd₂O₃ + Pr₆O₁₁ Recovery %, MREO: Magnetic Rare Earth Oxide (Nd₂O₃ + Pr₆O₁₁ + Dy₂O₃ + Tb₄O₇) Recovery %

LEACH TEST SAMPLE DETAIL				HEAD GRADE			DESORPTION SOLN. GRADE		RECOVERIES	
HOLE_ID	FROM (m)	TO (m)	INTERVAL (m)	TREO (ppm)	MRE Oxide (ppm)	HRE+Y Oxide (ppm)	MRE Oxide (ppm)	HRE+Y Oxide (ppm)	MRE Oxide (%)	HRE+Y Oxide (%)
EAS-AD-0001	0	1	1	2182	403	127	103	44	26%	35%
	1	2	1	2255	484	137	206	39	42%	29%
	2	3	1	3318	816	364	55	12	7%	3%
	3	4	1	3152	739	301	250	52	34%	17%
	4	5	1	2201	469	151	220	50	47%	33%
	5	6	1	1734	364	131	175	44	48%	34%
	6	7	1	1758	409	150	73	24	18%	16%
	7	8	1	3842	1046	438	835	363	80%	83%
	8	9	1	4774	1285	559	1085	472	84%	84%
	9	10	1	1284	313	141	190	71	60%	50%
	10	11	1	1415	330	134	164	59	50%	44%
	11	12	1	1339	294	111	103	44	35%	40%
12	13	1	1232	257	103	78	35	30%	33%	
EAS-AD-0002	0	1	1	2646	571	197	160	44	28%	23%
	1	2	1	3734	894	326	206	53	23%	16%
	2	3	1	3109	703	248	165	44	23%	18%
	3	4	1	3079	676	233	120	37	18%	16%
	4	5	1	2120	461	193	175	80	38%	41%
	5	6	1	2111	414	186	122	75	29%	40%
	6	7	1	1547	288	129	59	42	20%	33%

Table 2: Significant IAC leach test recovery statistics in auger hole in East Salinas (only significant results are listed above)

Samples received by the laboratory weighed greater than 3kg. Oversize material was sieved and reduced to -4mm prior to homogenisation. Each sample was split to generate a head-grade aliquot and a leach test aliquot. Leach testing was conducted on 40g samples for 30 minutes using 160ml of a cold-water solution containing 0.5 mol per litre AMSUL⁵ solution of pH 4. Following leaching, samples were filtered under vacuum and the residue washed with 80ml of 0.15 mol per litre AMSUL solution. An aliquot of the leach solution was diluted 25 times with 2% HNO₃ and analysed using ICP-MS and ICP-OES techniques.

Thorium (average: 0.61 ppm and <0.94ppm) and uranium (average: 2.49 ppm and <3.29ppm) leach recovery was negligible. Complete REE leach test results are provided in Appendix C Table 7.

Next Steps

A follow up auger drilling program is planned to define the extent and thickness of saprolite mineralisation at the East Salinas Project.

Auger samples will be submitted for IAC leach testing to assess recovery consistency.

⁵ Ammonium Sulphate

Tenements/permits

The East Salinas tenements are currently held by Mineração Paranaí Ltda and registered in the state of Minas Gerais. Upon completion of the permit in the official gazette, Mineração Paranaí Ltda will undertake the contractual process to transfer the title to Enova. Details of the East Salinas tenements are outlined in Table 3.

#	Licence ID	Area (Ha)	Status	Ownership	In Transference to
1	832387/2023	1,910.49	Granted	Mineração Paranaí Ltda	ENOVA BRASIL LTDA
2	832388/2023	1,979.56	Granted	Mineração Paranaí Ltda	ENOVA BRASIL LTDA
3	832389/2023	1,962.31	Granted	Mineração Paranaí Ltda	ENOVA BRASIL LTDA
4	832390/2023	1,984.08	Granted	Mineração Paranaí Ltda	ENOVA BRASIL LTDA
5	832391/2023	1,953.79	Granted	Mineração Paranaí Ltda	ENOVA BRASIL LTDA
6	832392/2023	1,978.33	Granted	Mineração Paranaí Ltda	ENOVA BRASIL LTDA
7	832393/2023	1,920.77	Granted	Mineração Paranaí Ltda	ENOVA BRASIL LTDA
8	832394/2023	1,970.01	Granted	Mineração Paranaí Ltda	ENOVA BRASIL LTDA
9	832395/2023	1,984.91	Granted	Mineração Paranaí Ltda	ENOVA BRASIL LTDA
10	832396/2023	1,266.88	Granted	Mineração Paranaí Ltda	ENOVA BRASIL LTDA
11	832397/2023	1,824.34	Granted	Mineração Paranaí Ltda	ENOVA BRASIL LTDA
12	832398/2023	1,971.13	Granted	Mineração Paranaí Ltda	ENOVA BRASIL LTDA
Total		22,706.60	hectares		

Table 3: East Salinas Project tenements Minas Gerais, Brazil

Brazil: A tier-one mining jurisdiction supporting long-Term Growth

Brazil offers a stable, low-risk environment for mining investment, underpinned by a well-established and globally competitive resources sector. As a top exporter of iron ore, gold, bauxite, lithium, rare earths and more, Brazil and particularly the states of Minas Gerais and São Paulo recognise mining as a cornerstone of economic development.

The country boasts investor-friendly policies, with no government ownership mandates, minimal interference, and a progressive regulatory framework encouraging exploration and new project development. Brazil's attractive cost structure, highly skilled workforce, advanced mining services sector, and robust infrastructure including proximity to key cities further enhance its status as a prime destination for resource investment.

Other projects

Enova has an extensive portfolio of tenements and advanced projects. Resources and focus are prioritised to meet project demands. Enova is currently working on several projects, at different stages of development. CODA project work focuses on metallurgical studies for the concentration of titanium, REE, Niobium and Scandium metals. Preliminary sighter test work by CIT Senai, Belo Horizonte is complete for the analysis of particle size analysis, semi-quantitative mineralogical study and magnetic separation tests. Test work at Mineral Technology in Brisbane is nearing completion focusing opportunities for beneficiation, ultra fine particle size analysis and magnetic separation. Our company laboratory in Malaysia

continues pre-treatment and leach recovery test work for scandium, gallium and REEs. Enova also remains committed to the advancing the Charley Creek rare earth project and awaits further samples to test "high-G" centrifugal heavy mineral concentration. Enova has been in the field exploring at Santo Antonio Do Jacinto, Carai and Resplendor projects. These results will be released when assays are returned and the data processed.

The Company will also continue to review projects and business opportunities as they arise.

The market will be kept appraised of developments, as required under ASX Listing Rules and in accord with continuous disclosure requirements.

ENDS

The announcement was authorised for release by the Board of Enova Mining Limited.

For more information, please contact:

Eric Vesel
Enova Mining Limited
CEO / Executive Director
eric@enovamining.com

Kristin Rowe
NWR Communications

kristin@nwrcommunications.com.au

About Enova Mining

Enova Mining is a critical minerals exploration and development company with a strategic portfolio of projects across Brazil and Australia, targeting the growing global demand for rare earth elements and battery metals.

The Company's key projects include:

- **The Coda Group of Projects** – prospective for clay-hosted rare earth elements (REE), scandium, titanium and gallium.
- **The Poços de Caldas Project** – a promising ionic adsorption clay REE opportunity.
- **The Charley Creek Project** – prospective for alluvial rare earths and scandium in the underlying saprolite
- **The Lithium Valley Projects** – including East Salinas, Carai, Santo Antônio do Jacinto, and Resplendor, all considered prospective for lithium and rare earth elements.

Enova is focused on advancing these high-potential assets through systematic exploration and development to support the global transition to clean energy technologies.

East Salinas Medina Intrusive Complex: A promising rare earth element (REE) discovery in Minas Gerais

- **Emerging High-Grade REE Opportunity:** The East Salinas Granitic Complex, situated within the East Brasileiro Orogen in northern Minas Gerais, has revealed highly anomalous surface geochemical results, with Total Rare Earth Oxides (TREO) grades reaching up to 2.17%. The project also boasts exceptionally high magnetic rare earth content, with NdPr (neodymium + praseodymium) oxide ratio reaching up to 38.8%, an average Heavy Rare Earth Oxide (HREO) ratio around 9.95% and average ytterbium oxide content around 387ppm. These results strongly support the presence of REE-bearing saprolite, granite and leucogranite units, confirming the potential for high-grade REE mineralisation across the project area.

- **Expanding Enova's Strategic Footprint:** East Salinas complements Enova's REE exploration portfolio alongside Juquiá, CODA North, and CODA Central. The project's large-scale tenement coverage and its association with post-collisional granites present multiple zones of interest, including the Bald Hill and Naked Hill targets, supporting further subsurface investigations and resource delineation.
- **Multi-Metal Potential and Geological Richness:** In addition to REEs, East Salinas shows elevated levels of neodymium, niobium, and other high-value elements linked with evolved granitic systems. This opens potential for valuable by-products and broader resource development across the tenement package.
- **Leveraging Brazilian Expertise for Efficient Advancement:** Enova's Brazilian geology team has been instrumental in advancing exploration at East Salinas through detailed mapping, systematic sampling, and field validation. Their expertise ensures efficient progression from surface sampling to future drilling and geophysical surveys.
- **Cost-Conscious Exploration with Strong Growth Potential:** Enova is adopting a disciplined, scalable exploration strategy at East Salinas focused on high-impact outcomes. With significant upside and a large tenement footprint, the project stands out as a cost-effective and potentially transformative REE discovery within Brazil's resource-rich landscape.

The East Salinas project underscores Enova's commitment to building a world-class REE and critical minerals portfolio, combining local geological strength with global technical knowledge to accelerate growth and shareholder value.

Competent person statement

The information related to Exploration Targets and Exploration Results is based on data compiled by Subhajit Deb Roy, a Competent Person and Chartered Member of The Australasian Institute of Mining and Metallurgy. Mr Deb Roy is currently working as Exploration Manager with Enova Mining. Subhajit has sufficient experience that is relevant to the style of mineralisation and type of deposits under consideration and to the activity being undertaken to qualify as a Competent Person as defined in the 2012 Edition of the Australasian Code for Reporting of Exploration Results, Mineral Resources and Ore Reserves. Subhajit consents to the inclusion in presenting the matters based on his information in the form.

Forward-looking statements

This announcement contains forward-looking statements which involve several risks and uncertainties. These forward-looking statements are expressed in good faith and believed to have a reasonable basis. These statements reflect current expectations, intentions or strategies regarding the future and assumptions based on currently available information. Should one or more of the risks or uncertainties materialise, or should underlying assumptions prove incorrect, actual results may vary from the expectations, intentions and strategies described in this announcement. No obligation is assumed to update forward looking statements if these beliefs, opinions and estimates should change or to reflect other future developments.

Precautionary statement

The exploration results for the East Salinas Project are preliminary in nature and based on surface geochemical sampling, mapping, and early-stage geological interpretation. While initial data indicate the presence of anomalous mineralisation, there has been insufficient exploration to define a Mineral Resource, and it is uncertain if further exploration will result in the delineation of a Mineral Resource. All forward-looking statements, including plans for future exploration and drilling, are subject to various risks, uncertainties, and assumptions. Investors are cautioned not to place undue reliance on these early results, as actual outcomes may differ materially from those anticipated. Resource estimates remain speculative and subject to revision.

Disclaimer

This ASX announcement (Announcement) has been prepared by Enova Mining Limited ("Enova" or "the Company"). It should not be considered as an offer or invitation to subscribe for or purchase any securities in the Company or as an inducement to make an offer or invitation with respect to those securities. No agreement to subscribe for securities in the Company will be entered into on the basis of this Announcement.

This Announcement contains summary information about Enova, its subsidiaries, and their activities, which is current as at the date of this Announcement. The information in this Announcement is of a general nature and does not purport to be complete nor does it contain all the information which a prospective investor may require in evaluating a possible investment in Enova.

By its very nature exploration for minerals is a high-risk business and is not suitable for certain investors. Enova's securities are speculative. Potential investors should consult their stockbroker or financial advisor. There are many risks, both specific to Enova and of a general nature which may affect the future operating and financial performance of Enova and the value of an investment in Enova including but not limited to economic conditions, stock market fluctuations, commodity price movements, regional infrastructure constraints, timing of approvals from relevant authorities, regulatory risks, operational risks and reliance on key personnel.

Certain statements contained in this announcement, including information as to the future financial or operating performance of Enova and its projects, are forward-looking statements that: may include, among other things, statements regarding targets, estimates and assumptions in respect of mineral reserves and mineral resources and anticipated grades and recovery rates, production and prices, recovery costs and results, capital expenditures, and are or may be based on assumptions and estimates related to future technical, economic, market, political, social and other conditions; are necessarily based upon a number of estimates and assumptions that, while considered reasonable by Enova, are inherently subject to significant technical, business, economic, competitive, political and social uncertainties and contingencies; and, involve known and unknown risks and uncertainties that could cause actual events or results to differ materially from estimated or anticipated events or results reflected in such forward-looking statements.

Enova disclaims any intent or obligation to update publicly any forward-looking statements, whether because of new information, future events, or results or otherwise. The words 'believe', 'expect', 'anticipate', 'indicate', 'contemplate', 'target', 'plan', 'intends', 'continue', 'budget', 'estimate', 'may', 'will', 'schedule' and similar expressions identify forward-looking statements. All forward-looking statements made in this announcement are qualified by the foregoing cautionary statements. Investors are cautioned that forward-looking statements are not guarantee of future performance and accordingly investors are cautioned not to put undue reliance on forward-looking statements due to the inherent uncertainty therein. No verification: although all reasonable care has been undertaken to ensure that the facts and opinions given in this Announcement are accurate, the information provided in this Announcement has not been independently verified

APPENDIX A

JORC TABLE 1

Section 1 - Sampling Techniques and Data

Criteria	JORC Code explanation	Commentary
Sampling techniques	<ul style="list-style-type: none"> Nature and quality of sampling (e.g. cut channels, random chips, or specific specialised industry standard measurement tools appropriate to the minerals under investigation, such as down hole gamma sondes, or handheld XRF instruments, etc). These examples should not be taken as limiting the broad meaning of sampling. Include reference to measures taken to ensure sample representivity and the appropriate calibration of any measurement tools or systems used. Aspects of the determination of mineralisation that are Material to the Public Report. In cases where 'industry standard' work has been done this would be relatively simple (e.g. 'reverse circulation drilling was used to obtain 1 m samples from which 3 kg was pulverised to produce a 30 g charge for fire assay'). In other cases, more explanation may be required, such as where there is coarse gold that has inherent sampling problems. Unusual commodities or mineralisation types (e.g. submarine nodules) may warrant disclosure of detailed information. 	<p>East Salinas Project Drilling Program:</p> <p>East Salinas Project consists of tenements (Table 3) where the areas were sampled at the outcrops and soils surfaces within the tenement by Auger Drilling, following the diamond drilling. Auger holes were drilled on and around the sites of previous high grade rock chip samples. Samples were collected from material of the drill cutting recovered by augering. In most locations, a thick saprolite soil layer, overlying granite and granodiorite lithology. Auger holes were drilled vertically perpendicular to horizontal mineralised zone established from previous results.</p> <p>Auger Holes</p> <p>In vertical auger holes, sample was collected at every 1m in the mineralised litho-stratigraphic unit which is overlying Medina Intrusive Granite and Granodiorite suite. All samples were sent for preparation to the contracted laboratory, SGS Geosol in Vespasiano, MG, Brazil. The sample was homogeneously reduced by using riffle splitter to around 2kg and one part is sent for assaying; other part is stored and retained or returned to East Salinas warehouse as kept as umpire sample. The samples representing in-situ rocks are preserved in plastic sample bags with sample numbers according to depth. Sampling intervals have been carefully designed to align with geological, lithostratigraphic and regolith (weathering) boundaries, ensuring that individual lithological contacts are not intersected by sample cuts. A comprehensive QA/QC protocol has been applied, including the routine collection and submission of field duplicate, certified reference material, blank samples to monitor analytical quality and reliability.</p> <p>Comments on representivity</p> <p>The systematic approach to sampling, combined with the thorough documentation, ensures that the data collected is robust and reliable. Samples were collected from drill cuttings recovered from auger holes in saprolite overlying East Salinas Medina Intrusive Complex.</p>
Drilling techniques	<ul style="list-style-type: none"> Drill type (e.g. core, reverse circulation, open-hole hammer, rotary air blast, auger, Bangka, sonic, etc) and details (e.g. core diameter, triple or standard tube, depth of diamond tails, face- 	<p>Drilling Auger Hole</p> <p>Auger drilling at East Salinas has been carried out using lightweight rigs designed for rapid, shallow sampling, targeting near-surface REE mineralisation within saprolitic weathered top layer of granite and granodiorite. Drill sites were prepared by</p>

	<p><i>sampling bit or other type, whether core is oriented and if so, by what method, etc).</i></p>	<p>clearing and levelling to ensure safe and efficient operations. Auger holes were typically terminated upon reaching maximum depth it can drill, ensuring focus on the mineralised saprolite horizon. This method complements deeper drilling techniques and provides high-resolution geochemical data to guide future RC and diamond drilling aimed at testing horizontal continuity and depth extent of shallow mineralisation.</p> <p>All auger holes were collared and drilled vertically downward from surface.</p> <p>Initial drill rig alignment was completed labelling the platform to drill vertically and no reflex tool was used.</p> <p>No Downhole surveys were conducted for the test drilling</p> <p>All drill collar locations were picked up using Handheld Garmin GPS to ensure tentative spatial positioning. The collar survey pick up will be undertaken later along with topographic survey.</p>
<p>Drill sample recovery</p>	<ul style="list-style-type: none"> • <i>Method of recording and assessing core and chip sample recoveries and results assessed.</i> • <i>Measures taken to maximise sample recovery and ensure representative nature of the samples.</i> • <i>Whether a relationship exists between sample recovery and grade and whether sample bias may have occurred due to preferential loss/gain of fine/coarse material.</i> 	<p>Recovery in Diamond Drillholes</p> <p>Every 1m sample in the mineralised strata is collected in plastic bags and weighed. Each sample averages approximately 3-5kg, which is considered given the hole diameter, material loss sticky clay content in the lithological units and the specific density of the material. The sample recovery was around 80% due to high clay content in the strata, loss of cuttings. The recovery has been estimated by visual inspection.</p> <p>Any sample bias due to low recovery will be determined after the assay and mineral characterisation are completed.</p>
<p>Logging</p>	<ul style="list-style-type: none"> • <i>Whether core and chip samples have been geologically and geotechnically logged to a level of detail to support appropriate Mineral Resource estimation, mining studies and metallurgical studies.</i> • <i>Whether logging is qualitative or quantitative in nature. Core (or costean, channel, etc) photography.</i> • <i>The total length and percentage of the relevant intersections logged.</i> 	<p>Auger holes</p> <p>Preliminary lithological descriptions are recorded at site or in Enova's warehouse facility by professional geologist, describing broadly about the granite and granodiorite and the regolith weathering zone contacts.</p> <p>Logging is both qualitative and quantitative and preliminary in nature. Parameters such as grain size, texture, colour, mineralogy, magnetism, type of alterations will be logged in detail in due course.</p> <p>The type of weathering zone contact is identified by visual inspections which can help to differentiate the overlying and underlying lithology from mineralised stratigraphy.</p> <p>All auger holes cuttings are stored at the warehouse facility near East Salinas project site.</p>
<p>Sub-sampling techniques and sample preparation</p>	<ul style="list-style-type: none"> • <i>If core, whether cut or sawn and whether quarter, half or all cores taken.</i> • <i>If non-core, whether riffled, tube sampled, rotary split, etc and whether sampled wet or dry.</i> • <i>For all sample types, the nature, quality, and appropriateness of the</i> 	<p>Sample Preparation</p> <p>Collection, Preparation and Labelling: Samples are weighed. Wet samples are dried for several days on rubber mats. Dried samples are screened (5mm). Samples were prepared by using riffle splitter/coning and quartering method and homogeneously reduced. Finally, a 1-2 kg sample was sent to the lab, SGS Geosol laboratory in Minas Gerais.</p> <p>Field QA/QC</p>

For personal use only

	<p>sample preparation technique.</p> <ul style="list-style-type: none"> Quality control procedures adopted for all sub-sampling stages to maximise representivity of samples. Measures taken to ensure that the sampling is representative of the in-situ material collected, including for instance results for field duplicate/second-half sampling. Whether sample sizes are appropriate to the grain size of the material being sampled. 	<p>Field Duplicates: Duplicates are inserted approximately every 20 samples using quarter core.</p> <p>Other QA/QC Samples: OREAS 460 and OREAS 461 Certified Reference Material; Blanks were used for QA/QC purposes are inserted approximately at the interval of every 20 samples.</p> <p>The samples were placed in labelled plastic bags before dispatching to SGS Geosol laboratory in Vespasiano.</p> <p>Sample Preparation in SGS Laboratory</p> <p>At the lab, SGS-Geosol commercial laboratory, in Vespasiano, the samples are dried at 60⁰ or 105⁰ C, 75% material crushed to a nominal 3mm using a jaw crusher before being split using Jones riffle splitter for pulverising.</p> <p>The aliquots are pulverised to a nominal >95% of 300g passing 150 micron for which a 100g sample is then selected for analysis. A spatula is used to sample from the pulverised sample for digestion.</p> <p>Sample preparation</p> <p>Collection and labelling: Samples of diamond cores are taken at 1.0m intervals from granite-granodiorite lithological unit</p> <p>The cores are split longitudinally using a rock-cutting saw.</p> <p>The samples were placed in labelled plastic bags and in the process of dispatching them to the SGS Geosol laboratory in Vespasiano.</p> <p>Laboratory QA/QC The laboratory follows strict quality control procedures, ensuring the accuracy and precision of the assay data. Internally, the laboratory uses duplicate assays, standards, and blanks to maintain quality.</p>																																																																						
<p>Quality of assay data and laboratory tests</p>	<ul style="list-style-type: none"> The nature, quality and appropriateness of the assaying and laboratory procedures used and whether the technique is considered partial or total. For geophysical tools, spectrometers, handheld XRF instruments, etc, the parameters used in determining the analysis including instrument make and model, reading times, calibrations factors applied and their derivation, etc. Nature of quality control procedures adopted (e.g. standards, blanks, duplicates, external laboratory checks) and whether acceptable levels of accuracy (i.e. lack of bias) and precision have been established. 	<p>Samples are analysed at the SGS Geosol laboratory in batches of approximately 50 samples including QA/QC samples (duplicate, blank, and standards).</p> <p>Industry standard protocols are used by SGS-Geosol to prepare samples for analysis. Samples are dried, and a sub sample of 300g was pulverised. For rare earth element analysis, samples are prepared with lithium/Metaborate fusion and are analysed by Inductively Coupled Plasma Mass Spectrometry (ICP-MS) or Inductively Coupled Plasma Optical Emission Spectrometry (ICP-OES).</p> <p>SGS Geosol detection limits of major oxides and minor and trace elements are given below</p> <p>3.1) ICP95A</p> <table border="1" data-bbox="751 1697 1394 1805"> <thead> <tr> <th colspan="4">Determinação por Fusão com Metaborato de Lítio - ICP OES</th> <th>PM-00000373</th> </tr> </thead> <tbody> <tr> <td>Al2O3 0.01 - 75 (%)</td> <td>Ba 10 - 100000 (ppm)</td> <td>CaO 0.01 - 60 (%)</td> <td>Cr2O3 0.01 - 10 (%)</td> <td></td> </tr> <tr> <td>Fe2O3 0.01 - 75 (%)</td> <td>K2O 0.01 - 25 (%)</td> <td>MgO 0.01 - 30 (%)</td> <td>MnO 0.01 - 10 (%)</td> <td></td> </tr> <tr> <td>Na2O 0.01 - 30 (%)</td> <td>P2O5 0.01 - 25 (%)</td> <td>SiO2 0.01 - 90 (%)</td> <td>Sr 10 - 100000 (ppm)</td> <td></td> </tr> <tr> <td>TiO2 0.01 - 25 (%)</td> <td>V 5 - 10000 (ppm)</td> <td>Zn 5 - 10000 (ppm)</td> <td>Zr 10 - 100000 (ppm)</td> <td></td> </tr> </tbody> </table> <p>3.2) IMS95A</p> <table border="1" data-bbox="751 1845 1394 2007"> <thead> <tr> <th colspan="4">Determinação por Fusão com Metaborato de Lítio - ICP MS</th> <th>PM-00000373</th> </tr> </thead> <tbody> <tr> <td>Ce 0.1 - 10000 (ppm)</td> <td>Co 0.5 - 10000 (ppm)</td> <td>Cs 0.05 - 1000 (ppm)</td> <td>Cu 5 - 10000 (ppm)</td> <td></td> </tr> <tr> <td>Dy 0.05 - 1000 (ppm)</td> <td>Er 0.05 - 1000 (ppm)</td> <td>Eu 0.05 - 1000 (ppm)</td> <td>Ga 0.1 - 10000 (ppm)</td> <td></td> </tr> <tr> <td>Gd 0.05 - 1000 (ppm)</td> <td>Hf 0.05 - 500 (ppm)</td> <td>Ho 0.05 - 1000 (ppm)</td> <td>La 0.1 - 10000 (ppm)</td> <td></td> </tr> <tr> <td>Lu 0.05 - 1000 (ppm)</td> <td>Mo 2 - 10000 (ppm)</td> <td>Nb 0.05 - 1000 (ppm)</td> <td>Nd 0.1 - 10000 (ppm)</td> <td></td> </tr> <tr> <td>Ni 5 - 10000 (ppm)</td> <td>Pr 0.05 - 1000 (ppm)</td> <td>Rb 0.2 - 10000 (ppm)</td> <td>Sm 0.1 - 1000 (ppm)</td> <td></td> </tr> <tr> <td>Sn 0.3 - 1000 (ppm)</td> <td>Ta 0.05 - 10000 (ppm)</td> <td>Tb 0.05 - 1000 (ppm)</td> <td>Th 0.1 - 10000 (ppm)</td> <td></td> </tr> <tr> <td>Tl 0.5 - 1000 (ppm)</td> <td>Tm 0.05 - 1000 (ppm)</td> <td>U 0.05 - 10000 (ppm)</td> <td>W 0.1 - 10000 (ppm)</td> <td></td> </tr> <tr> <td>Y 0.05 - 10000 (ppm)</td> <td>Yb 0.1 - 1000 (ppm)</td> <td></td> <td></td> <td></td> </tr> </tbody> </table> <p>QA/QC samples are included amongst the submitted samples.</p>	Determinação por Fusão com Metaborato de Lítio - ICP OES				PM-00000373	Al2O3 0.01 - 75 (%)	Ba 10 - 100000 (ppm)	CaO 0.01 - 60 (%)	Cr2O3 0.01 - 10 (%)		Fe2O3 0.01 - 75 (%)	K2O 0.01 - 25 (%)	MgO 0.01 - 30 (%)	MnO 0.01 - 10 (%)		Na2O 0.01 - 30 (%)	P2O5 0.01 - 25 (%)	SiO2 0.01 - 90 (%)	Sr 10 - 100000 (ppm)		TiO2 0.01 - 25 (%)	V 5 - 10000 (ppm)	Zn 5 - 10000 (ppm)	Zr 10 - 100000 (ppm)		Determinação por Fusão com Metaborato de Lítio - ICP MS				PM-00000373	Ce 0.1 - 10000 (ppm)	Co 0.5 - 10000 (ppm)	Cs 0.05 - 1000 (ppm)	Cu 5 - 10000 (ppm)		Dy 0.05 - 1000 (ppm)	Er 0.05 - 1000 (ppm)	Eu 0.05 - 1000 (ppm)	Ga 0.1 - 10000 (ppm)		Gd 0.05 - 1000 (ppm)	Hf 0.05 - 500 (ppm)	Ho 0.05 - 1000 (ppm)	La 0.1 - 10000 (ppm)		Lu 0.05 - 1000 (ppm)	Mo 2 - 10000 (ppm)	Nb 0.05 - 1000 (ppm)	Nd 0.1 - 10000 (ppm)		Ni 5 - 10000 (ppm)	Pr 0.05 - 1000 (ppm)	Rb 0.2 - 10000 (ppm)	Sm 0.1 - 1000 (ppm)		Sn 0.3 - 1000 (ppm)	Ta 0.05 - 10000 (ppm)	Tb 0.05 - 1000 (ppm)	Th 0.1 - 10000 (ppm)		Tl 0.5 - 1000 (ppm)	Tm 0.05 - 1000 (ppm)	U 0.05 - 10000 (ppm)	W 0.1 - 10000 (ppm)		Y 0.05 - 10000 (ppm)	Yb 0.1 - 1000 (ppm)			
Determinação por Fusão com Metaborato de Lítio - ICP OES				PM-00000373																																																																				
Al2O3 0.01 - 75 (%)	Ba 10 - 100000 (ppm)	CaO 0.01 - 60 (%)	Cr2O3 0.01 - 10 (%)																																																																					
Fe2O3 0.01 - 75 (%)	K2O 0.01 - 25 (%)	MgO 0.01 - 30 (%)	MnO 0.01 - 10 (%)																																																																					
Na2O 0.01 - 30 (%)	P2O5 0.01 - 25 (%)	SiO2 0.01 - 90 (%)	Sr 10 - 100000 (ppm)																																																																					
TiO2 0.01 - 25 (%)	V 5 - 10000 (ppm)	Zn 5 - 10000 (ppm)	Zr 10 - 100000 (ppm)																																																																					
Determinação por Fusão com Metaborato de Lítio - ICP MS				PM-00000373																																																																				
Ce 0.1 - 10000 (ppm)	Co 0.5 - 10000 (ppm)	Cs 0.05 - 1000 (ppm)	Cu 5 - 10000 (ppm)																																																																					
Dy 0.05 - 1000 (ppm)	Er 0.05 - 1000 (ppm)	Eu 0.05 - 1000 (ppm)	Ga 0.1 - 10000 (ppm)																																																																					
Gd 0.05 - 1000 (ppm)	Hf 0.05 - 500 (ppm)	Ho 0.05 - 1000 (ppm)	La 0.1 - 10000 (ppm)																																																																					
Lu 0.05 - 1000 (ppm)	Mo 2 - 10000 (ppm)	Nb 0.05 - 1000 (ppm)	Nd 0.1 - 10000 (ppm)																																																																					
Ni 5 - 10000 (ppm)	Pr 0.05 - 1000 (ppm)	Rb 0.2 - 10000 (ppm)	Sm 0.1 - 1000 (ppm)																																																																					
Sn 0.3 - 1000 (ppm)	Ta 0.05 - 10000 (ppm)	Tb 0.05 - 1000 (ppm)	Th 0.1 - 10000 (ppm)																																																																					
Tl 0.5 - 1000 (ppm)	Tm 0.05 - 1000 (ppm)	U 0.05 - 10000 (ppm)	W 0.1 - 10000 (ppm)																																																																					
Y 0.05 - 10000 (ppm)	Yb 0.1 - 1000 (ppm)																																																																							

		<p>Both standards, duplicates, and blank QA/QC samples were inserted in the sample stream.</p> <p>OREAS 460 and OREAS 461 samples sent from Australia which was used in 10-12gm package as certified reference material at an interval every 15-20 samples.</p> <p>The assays were done using ICP MS, ICP OES after Fusion with Lithium Metaborate - ICP MS for major Oxides.</p> <p>Leach test protocol using AMSUL is described in Metallurgical test work paragraph.</p>
Verification of sampling and assaying	<ul style="list-style-type: none"> • The verification of significant intersections by either independent or alternative company personnel. • The use of twinned holes. • Documentation of primary data, data entry procedures, data verification, data storage (physical and electronic) protocols. • Discuss any adjustment to assay data. 	<p>Enova's professional geologist team, led by Fernando Moya reviewed the data collated and compared it with electronic copies to verify the accuracy. Assay data, in electronic form, is checked to verify that the data files are correctly handled in spreadsheets where calculations are needed.</p> <p>Field geological data was recorded in the field notebook and then typed into a spreadsheet for subsequent import to a database.</p> <p>No drilling update is reported in the current announcement.</p> <p>The assay data of auger hole samples has been added in Appendix C Table 6 and assay data is received in spreadsheet and certificates form the laboratory.</p> <p>Assay data is received in spreadsheet format from the laboratory.</p> <p>The assay data of Rare Earth Element has been converted into Rare Earth Oxide (Refer to Section 2 of JORC table "Data Aggregation Method").</p>
Location of data points	<ul style="list-style-type: none"> • Accuracy and quality of surveys used to locate drill holes (collar and down-hole surveys), trenches, mine workings and other locations used in Mineral Resource estimation. • Specification of the grid system used. • Quality and adequacy of topographic control. 	<p>The hole collar locations were picked up using a Garmin handheld GPS. Datum for all sitework is considered SIRGAS 2000, Zone 24 South or WGS 84 UTM Zone 24S (Appendix B, Table 4). The error in the handheld GPS is around $\pm 3m$.</p> <p>This universal grid system facilitates consistent data interpretation and integration with other geospatial datasets.</p> <p>The locations of hole collar points are listed in the Appendix -B Table 4.</p> <p>Topographic Control: No topographic survey was conducted.</p>
Data spacing and distribution	<ul style="list-style-type: none"> • Data spacing for reporting of Exploration Results. • Whether the data spacing and distribution is sufficient to establish the degree of geological and grade continuity appropriate for the Mineral Resource and Ore Reserve estimation procedure(s) and classifications applied. • Whether sample compositing has been applied. 	<p>The average spacing between adjacent hole collars are variable, varied according to the location of high-grade surface sample points and/or high-grade holes.</p> <p>The spacing is appropriate to the scale of tenements and variation in geology of zoned complex.</p> <p>In the maiden holes, no compositing done. All samples were prepared for ~1m run except near or around lithological and stratigraphical contacts, where sample length was variable.</p> <p>No Mineral Resource and Ore Reserve Estimation were undertaken.</p>
Orientation of data in relation to geological structure	<ul style="list-style-type: none"> • Whether the orientation of sampling achieves unbiased sampling of possible structures and the extent to which this is known, considering the deposit type. • If the relationship between the 	<p>The holes drilled vertically in East Salinas are holes to investigate at depth extension and confirmation of lateral extension of IAC (Ionic Adsorption Clay) REE mineralisation. Once the extent of key mineralised zone is identified, further vertical and in fill holes may be drilled based on the trends of rare element enrichment.</p> <p>Given the depth of holes, varying from 10-30m from surface, the</p>

	<i>drilling orientation and the orientation of key mineralised structures is considered to have introduced a sampling bias, this should be assessed and reported if material.</i>	sample biases due to orientation of shallow holes is considered negligible and lateral extension of mineralisation is not yet known.
Sample security	<ul style="list-style-type: none"> The measures taken to ensure sample security. 	All samples collected by field technicians were meticulously packed in labelled plastic bags. They were then transported directly to the SGS-GEOSOL, Vespasiano in Minas Gerais, Brazil. The samples were secured during transit to prevent tampering, contamination, or loss. A chain of custody was maintained from the field to the laboratory, with proper documentation accompanying each batch to ensure transparency and traceability throughout the sampling process. Utilising a reputable laboratory further ensures the security and integrity of the assay results.
Audits or reviews	<ul style="list-style-type: none"> The results of any audits or reviews of sampling techniques and data. 	The site is attended by Enova's Brazilian professional geologist team supervised by Fernando Moya, qualified geologist to carry out, inspect sampling procedures, verify the sampling protocols, secure the transport and storage of samples, verification of geological records, review QAQC procedures.

Section 2 - Reporting of Exploration Results

Criteria	JORC Code explanation	Commentary																																																								
Mineral tenement and land tenure status	<ul style="list-style-type: none"> Type, reference name/number, location and ownership including agreements or material issues with third parties such as joint ventures, partnerships, overriding royalties, native title interests, historical sites, wilderness or national park and environmental settings. The security of the tenure held at the time of reporting along with any known impediments to obtaining a licence to operate in the area. 	<p>The tenements are held by Mineração Paranaí Ltda, who filled transfer documents in favour of Rafael Mottin, at the ANM, Brazil's National mining authority. The tenements are in the process of transfer to Enova Brasil Ltda ("100%").</p> <p>The current exploration is conducted in multiple tenements in East Salinas near Maristella town.</p> <p>There is no issue with the tenement holding and it's good standing known to Enova Mining. However, Enova Mining is engaged with stakeholders for future works. The current results are delayed results of previous drilling.</p> <p>Details of the East Salinas tenements are given in Table 3</p> <table border="1"> <thead> <tr> <th>Licence ID</th> <th>Area (Ha)</th> <th>Status</th> <th>Ownership</th> </tr> </thead> <tbody> <tr><td>832387/2023</td><td>1,910.49</td><td>Granted</td><td>Mineração Paranaí Ltda</td></tr> <tr><td>832388/2023</td><td>1,979.56</td><td>Granted</td><td>Mineração Paranaí Ltda</td></tr> <tr><td>832389/2023</td><td>1,962.31</td><td>Granted</td><td>Mineração Paranaí Ltda</td></tr> <tr><td>832390/2023</td><td>1,984.08</td><td>Granted</td><td>Mineração Paranaí Ltda</td></tr> <tr><td>832391/2023</td><td>1,953.79</td><td>Granted</td><td>Mineração Paranaí Ltda</td></tr> <tr><td>832392/2023</td><td>1,978.33</td><td>Granted</td><td>Mineração Paranaí Ltda</td></tr> <tr><td>832393/2023</td><td>1,920.77</td><td>Granted</td><td>Mineração Paranaí Ltda</td></tr> <tr><td>832394/2023</td><td>1,970.01</td><td>Granted</td><td>Mineração Paranaí Ltda</td></tr> <tr><td>832395/2023</td><td>1,984.91</td><td>Granted</td><td>Mineração Paranaí Ltda</td></tr> <tr><td>832396/2023</td><td>1,266.88</td><td>Granted</td><td>Mineração Paranaí Ltda</td></tr> <tr><td>832397/2023</td><td>1,824.34</td><td>Granted</td><td>Mineração Paranaí Ltda</td></tr> <tr><td>832398/2023</td><td>1,971.13</td><td>Granted</td><td>Mineração Paranaí Ltda</td></tr> <tr><td>Total</td><td>22706.60</td><td></td><td></td></tr> </tbody> </table>	Licence ID	Area (Ha)	Status	Ownership	832387/2023	1,910.49	Granted	Mineração Paranaí Ltda	832388/2023	1,979.56	Granted	Mineração Paranaí Ltda	832389/2023	1,962.31	Granted	Mineração Paranaí Ltda	832390/2023	1,984.08	Granted	Mineração Paranaí Ltda	832391/2023	1,953.79	Granted	Mineração Paranaí Ltda	832392/2023	1,978.33	Granted	Mineração Paranaí Ltda	832393/2023	1,920.77	Granted	Mineração Paranaí Ltda	832394/2023	1,970.01	Granted	Mineração Paranaí Ltda	832395/2023	1,984.91	Granted	Mineração Paranaí Ltda	832396/2023	1,266.88	Granted	Mineração Paranaí Ltda	832397/2023	1,824.34	Granted	Mineração Paranaí Ltda	832398/2023	1,971.13	Granted	Mineração Paranaí Ltda	Total	22706.60		
Licence ID	Area (Ha)	Status	Ownership																																																							
832387/2023	1,910.49	Granted	Mineração Paranaí Ltda																																																							
832388/2023	1,979.56	Granted	Mineração Paranaí Ltda																																																							
832389/2023	1,962.31	Granted	Mineração Paranaí Ltda																																																							
832390/2023	1,984.08	Granted	Mineração Paranaí Ltda																																																							
832391/2023	1,953.79	Granted	Mineração Paranaí Ltda																																																							
832392/2023	1,978.33	Granted	Mineração Paranaí Ltda																																																							
832393/2023	1,920.77	Granted	Mineração Paranaí Ltda																																																							
832394/2023	1,970.01	Granted	Mineração Paranaí Ltda																																																							
832395/2023	1,984.91	Granted	Mineração Paranaí Ltda																																																							
832396/2023	1,266.88	Granted	Mineração Paranaí Ltda																																																							
832397/2023	1,824.34	Granted	Mineração Paranaí Ltda																																																							
832398/2023	1,971.13	Granted	Mineração Paranaí Ltda																																																							
Total	22706.60																																																									
Exploration done by other parties	<ul style="list-style-type: none"> Acknowledgment and appraisal of exploration by other parties. 	The East Salinas Medina Intrusive complex project site was not earlier explored by other agency except Enova Mining. The data such as geological map and geophysical maps in SGB (Geological Survey of Brazil) website covers the area regionally including East Salinas Medina Intrusive complex project tenements. Enova																																																								

		<p>completed several rounds of surface geochemical sampling and diamond drilling which have been announced in previous ASX releases (Appendix D).</p>
<p>Geology</p>	<ul style="list-style-type: none"> • <i>Deposit type, geological setting and style of mineralisation.</i> 	<p>The Medina Intrusive Suite in the East Salinas Project comprises the Granito Maristela, a large I-type granitic batholith covering ~1,150 km². This metaluminous, porphyritic granite exhibits a coarse-grained matrix of quartz, pink K-feldspar, biotite, and allanite, with megacrysts of euhedral feldspar (2–3 cm). It hosts xenoliths of schist and gneiss (e.g., syenitic, tonalitic, and peraluminous varieties) near contacts with the Salinas Formation. The granite forms prominent pão-de-açúcar (sugarloaf) hills, such as Serra do Anastácio (1,430 m), contrasting with the adjacent Detrito-Lateritic Cover (750–900 m), a Tertiary to recent pediment surface with thick saprolite.</p> <p>Structurally, the area is divided into two domains:</p> <ol style="list-style-type: none"> 1. Older Metasedimentary Domain: Includes the Macaúbas Group (Salinas and Nova Aurora formations), kinzigitic gneisses, and S-type Granito Pajeú, with E-W-trending foliations and fold axes attributed to Brasiliano compression. 2. Younger Granitic Domain: Dominated by post-tectonic I-type granites (Maristela and Água Branca). The Maristela batholith caused centripetal foliation in surrounding schists ("ballooning" during emplacement) and exhibits NNE to NE fracture trends controlling local drainage (e.g., Mosquito and Urubu rivers). <p>The complex reflects Brasiliano orogenic magmatism, with the Maristela granite intruding and thermally reworking older crustal rocks. Its high relief and isotropic texture contrast sharply with the flattened morphology of the metasedimentary domain.</p> <p>The REE results are surface signatures of potential mineralisation. Style of potential mineralisation is hard rock Rare Element enrichment. The depth and strike extension would only be established through further exploration.</p> <p>The local geology is interpreted as 8-25m saprolite layer overlying granitic intrusive in multiple targets such as Bald hill, Naked Hill, Hairy Hill and Flat Hill differentiated based on visual identification of mineralogy.</p> <p>The cross section (Figure 5) shows saprolite veneer underlain Medina Granite Intrusive complex. The near surface saprolite strata is interpreted as autochthonous weathering profile of underlying parent granite.</p> <p>The general trend (strike) of the granitic intrusive unit's lithological unit contacts is SW-NE and tentatively dipping 45°-60° towards SW.</p> <p>The interpretation of inferred contacts is based on limited drillhole data and may be refined by follow-up drilling.</p> <p>Mineralisation style is Ionic Adsorption Clay REE mineralisation within saprolite veneer.</p>

Drill hole Information

- *A summary of all information material to the understanding of the exploration results including a tabulation of the following information for all Material drill holes:*
- *easting and northing of the drill hole collar*
- *elevation or RL (Reduced Level – elevation above sea level in metres) of the drill hole collar*
- *dip and azimuth of the hole*
- *down hole length and interception depth*
- *hole length.*
- *If the exclusion of this information is justified on the basis that the information is not Material and this exclusion does not detract from the understanding of the report, the Competent Person should clearly explain why this is the case.*

The data and information of about the drillhole collar points are given below:

Enova has completed 2 more auger holes along with 14 diamond holes in Bald Hill, Naked Hill, Hairy Hill and Flat Hill with total meterage of 20m. Easting Northing, Elevation, Dip, Azimuth, Depth (EOH-End of Holes) of the drillholes are given in the Appendix B Table 4.

The assay results are included in Appendix C Table 6 and preliminary lithological description are included in Table 5A.

In this release, the assay results of EAS-AD-0001 to EAS-AD-0002 and leach test recovery results for drillholes are included.

In addition to previous results, 20 additional assay results for drillholes (EAS-AD-0001 and EAS-AD-0002) reported in this announcement.

In addition to results in the previous announcement, 20 leach test results of saprolite horizons for auger holes EAS-AD-0001 to EAS-AD-0014 are reported in this announcement (4 leach test results are pending; 174 and 13 leach test results reported in the previous announcement of 10 Feb 2026 and 9 Apr 2026).

For personal use only

<p>Data aggregation methods</p>	<ul style="list-style-type: none"> • In reporting Exploration Results, weighting averaging techniques, maximum and/or minimum grade truncations (e.g. cutting of high grades) and cut-off grades are usually Material and should be stated. • Where aggregate intercepts incorporate short lengths of high-grade results and longer lengths of low-grade results, the procedure used for such aggregation should be stated and some typical examples of such aggregations should be shown in detail. • The assumptions used for any reporting of metal equivalent values should be clearly stated. 	<p>The database of collar, geology, assays has been compiled as per industry standard practices and for the use of resource modelling in the next stage. No topographic and drill hole collar survey is undertaken in CODA East.</p> <p>The data are being compiled in Collar, Survey, Assay and Geology files. The Assay data has been compiled in the Assay table and TREO and TiO₂% are given in Appendix C, Table 6. The database has been compiled as per industry standard practices and for the use of resource modelling in the next stage.</p> <p>The conversion of Total Rare Earth Oxide (TREO) has been calculated using standard conversion table as mentioned below. The conversion of elemental assay results to expected common rare earth oxide products, uses conversion factors applied relating to the atomic composition of common rare earth oxide sale products. The following calculation for TREO provides REE to RE oxide conversion factors and lists the REE included:</p> $\text{TREO} = (\text{Ce} \times 1.23) + (\text{Dy} \times 1.15) + (\text{Er} \times 1.14) + (\text{Gd} \times 1.15) + (\text{Ho} \times 1.15) + (\text{La} \times 1.17) + (\text{Lu} \times 1.14) + (\text{Nd} \times 1.17) + (\text{Pr} \times 1.21) + (\text{Sm} \times 1.16) + (\text{Tb} \times 1.18) + (\text{Tm} \times 1.14) + (\text{Y} \times 1.27) + (\text{Yb} \times 1.14)$ <p>Cut-off calculations</p> <p>For the reporting of significant intersections and assays, the downhole aggregation for the cut-off calculation is based on the average of 3 consecutive samples that are greater than the nominal cutoff. No more than 4 samples below cut-off are accepted in any 4m consecutive aggregation but the aggregation with the below cut-off sample must remain above the nominal cut-off. As an exception, assays within saprolite clay have been aggregated to represent the significant grade.</p> <p>Nominal Cut-offs</p> <p>TREO</p> <p>Nominal cut-offs of 1000 ppm, 2000 ppm and 3000 ppm have been applied for calculation of significant results of TREO. Notable high-grade assays have been calculated with nominal cut-off 3000 ppm TREO.</p>
<p>Relationship between mineralisation widths and intercept lengths</p>	<ul style="list-style-type: none"> • These relationships are particularly important in the reporting of Exploration Results. • If the geometry of the mineralisation with respect to the drill hole angle is known, its nature should be reported. • If it is not known and only the down hole lengths are reported, there should be a clear statement to this effect (e.g. 'down hole length, true width not known'). 	<p>As the geometry of the mineralisation is not known and the maiden test holes were drilled with the vertical orientation to explore the extent of mineralisation. The downhole lengths are likely to bring out the width of the mineralised zones.</p> <p>Although, there was no downhole survey done, the drill rig was aligned vertically to ensure penetrating vertically through granite -granodiorite strata. Hence potential bias of drilling orientation of shallow holes are negligible for resource estimation in this context.</p>

<p>Diagrams</p>	<ul style="list-style-type: none"> • <i>Appropriate maps and sections (with scales) and tabulations of intercepts should be included for any significant discovery being reported. These should include but not be limited to a plan view of drill hole collar locations and appropriate sectional views.</i> 	<p>The data provided in this report aids readers in comprehending the information more effectively. The document includes various diagrams and supplementary details, which enhance the clarity and accessibility of the geological findings and exploration results. Please refer to the Figure 1 to 5 for drillhole collars, assays, drill plan, rock types and drill targets related data and information. Figure 1 shows completed drillhole collar points.</p>
<p>Balanced reporting</p>	<ul style="list-style-type: none"> • <i>Where comprehensive reporting of all Exploration Results is not practicable, representative reporting of both low and high grades and/or widths should be practiced to avoid misleading reporting of Exploration Results.</i> 	<p>The data presented in this report aims to offer a transparent and comprehensive overview of the exploration activities and findings. All data have been listed in table 1-7. It thoroughly covers information on sampling techniques, geological context, prior exploration work, and assay results. Relevant cross-references to previous announcements are included to ensure continuity and clarity. Diagrams, such as drillhole collar point plan and tenements maps and tables, are provided to facilitate a deeper understanding of the data. Additionally, the report distinctly mentions the source of the samples, whether from granite -granodiorite litho-units to ensure a balanced perspective. This report represents the exploration activities and findings without any known bias or omission.</p>
<p>Other substantive exploration data</p>	<ul style="list-style-type: none"> • <i>Other exploration data, if meaningful and material, should be reported including (but not limited to): geological observations; geophysical survey results; geochemical survey results; bulk samples – size and method of treatment; metallurgical test results; bulk density, groundwater, geotechnical and rock characteristics; potential deleterious or contaminating substances.</i> 	<p>The report includes diamond drillhole assay results and regional geology descriptions. There is no additional substantive, relevant and significant exploration data to report currently.</p>
<p>Further work</p>	<ul style="list-style-type: none"> • <i>The nature and scale of planned further work (e.g. tests for lateral extensions or depth extensions or large-scale step-out drilling).</i> • <i>Diagrams clearly highlighting the areas of possible extensions, including the main geological interpretations and future drilling areas, provided this information is not commercially sensitive.</i> 	<p>In the next phase will focus on further step out auger drilling along the interpreted trends defined by the current drill holes to assess strike and dip continuity and expand the known extent of mineralisation. These step out holes will be designed to systematically test along strike and dip from existing intersections, refining the geological model and supporting the transition from target testing to broader mineralisation delineation at East Salinas.</p> <p>Diagrams and figures in the current document are highlighting the outcomes of drillhole sampling and identify high anomalous zones.</p>

Appendix B: The location of auger hole collars, depth presented in the current release

Hole ID	Type	Target	Easting	Northing	Elevation	DATUM	DIP	AZIMUTH	Depth (m)
EAS-DD-0001	Diamond	Bald Hill	211460	8251270	945.65	WGS 84 24S	90	0	100.10
EAS-DD-0002	Diamond	Bald Hill	211275	8251310	942.00	WGS 84 24S	90	0	49.97
EAS-DD-0003	Diamond	Naked Hill	211905	8251430	923.75	WGS 84 24S	90	0	100.23
EAS-DD-0004	Diamond	Naked Hill	212445	8251660	945.80	WGS 84 24S	90	0	51.07
EAS-DD-0005	Diamond	Naked Hill	212310	8251605	932.90	WGS 84 24S	90	0	100.14
EAS-DD-0006	Diamond	Naked Hill	212445	8251520	931.65	WGS 84 24S	90	0	50.27
EAS-DD-0007	Diamond	Naked Hill	212580	8251700	941.70	WGS 84 24S	90	0	100.19
EAS-DD-0008	Diamond	Naked Hill	213010	8251945	915.95	WGS 84 24S	90	0	100.24
EAS-DD-0009	Diamond	Hairy Hill	213390	8252375	901.00	WGS 84 24S	90	0	50.32
EAS-DD-0010	Diamond	Hairy Hill	213200	8252220	908.45	WGS 84 24S	90	0	93.04
EAS-DD-0011	Diamond	Hairy Hill	213100	8252135	914.75	WGS 84 24S	90	0	48.61
EAS-DD-0012	Diamond	Flat Hill	213650	8252570	896.10	WGS 84 24S	90	0	49.80
EAS-DD-0013	Diamond	Flat Hill	213950	8252780	905.20	WGS 84 24S	90	0	48.16
EAS-DD-0014	Diamond	Flat Hill	214250	8252705	906.00	WGS 84 24S	90	0	47.42
EAS-AD-0001	Auger	Bald Hill	211425	8251200	952.47	WGS 84 24S	90	0	13.00
EAS-AD-0002	Auger	Naked Hill	212400	8251600	941.79	WGS 84 24S	90	0	6.50

Table 4: Drillhole Collar Locations (Assay results of EAS-AD-0001 to EAS-AD-0002 are presented in the current release)

Appendix C: Lithological descriptions and assay results of diamond drillholes

Lithological Descriptions

Hole ID	FROM	TO	Zone	Lithology/Weathering	Description
EAS-AD-0001	0.00	1.00	SOIL	Pedolith	Brown-redish clay=sandy, with medium-coarse quartz grains.
EAS-AD-0001	1.00	7.00	SAP	Saprolite	Friable saprolite; granitic texture partially preserved; brown-orange=redish clay=sandy.
EAS-AD-0001	7.00	9.00	SAP	Saprolite	Compact saprolite; granitic texture preserved; brown-redish silt-sandy=clayey with dots of kaolinite.
EAS-AD-0001	9.00	13.00	SAP	Saprolite	Compact saprolite; granitic texture preserved; light grey-pinkish silt-sandy.
EAS-AD-0002	0.00	0.50	SOIL	Pedolith	Brown-redish clay=sandy, with medium-coarse quartz grains.
EAS-AD-0002	0.50	3.00	SAP	Saprolite	Friable saprolite; granitic texture partially preserved; light brown-orangish sand-silt-clayey.
EAS-AD-0002	3.00	5.00	SAP	Saprolite	Compact saprolite; granitic texture preserved; light brown-orangish sand-silty.
EAS-AD-0002	5.00	6.50	SAP	Saprolite	Compact saprolite; granitic texture preserved; light brown-grey-pinkish sand-silty.

HoleID	FROM	TO	Zone	Lithology/Weathering	Logging
EAS-DD-0001	0.00	1.00	SOIL	Pedolith	Brown-redish clay+sandy, with medium-coarse quartz grains.
EAS-DD-0001	1.00	9.00	SAP	Saprolite	Friable saprolite; granitic texture partially preserved;
EAS-DD-0001	9.00	15.20	SAP	Saprolite	Compact saprolite; granitic texture preserved; light grey-pinkish; very sandy; moderate oxidation.
EAS-DD-0001	15.20	26.55	SRK	Grey-Pinkish Granite	Light grey-pinkish granite, medium grained, <5% mafic minerals (bt); slightly magnetic; slightly to moderately oxidized; not magnetic.
EAS-DD-0001	26.55	32.50	FRK	Dark Grey Granite	Dark grey granite, medium grained, 5-10% mafic minerals (bt); moderately to strongly magnetic.
EAS-DD-0001	32.50	45.90	FRK	Grey-Pinkish Granite	Light grey-pinkish granite, medium grained, <5% mafic minerals (bt); slightly magnetic; slightly to moderately oxidized (yellowish mineral and stains).
EAS-DD-0001	45.90	73.50	FRK	Dark Grey Granite	Dark grey granite, medium grained, 5-15% mafic minerals (bt); moderately to strongly magnetic.
EAS-DD-0001	73.50	78.40	FRK	Grey-Pinkish Granite	Light grey-pinkish granite, medium grained, <5% mafic minerals (bt); slightly magnetic; slightly to moderately oxidized (yellowish mineral and stains).
EAS-DD-0001	78.40	94.30	FRK	Light Grey Granite	Light grey granite, medium grained, <5% mafic minerals (bt); moderately to strongly magnetic, with passages to more pinkish and darker grey granites.
EAS-DD-0001	94.30	97.80	FRK	Pegmatite Vein	Feldspatic pegmatite vein with an alteration halo turning the granite more pale, pinkish-orangish, less magnetic and moderately oxidized.
EAS-DD-0001	94.30	100.10	FRK	Light Grey Granite	Light grey granite, medium grained, <5% mafic minerals (bt); moderately magnetic, moderately oxidized.
EAS-DD-0002	0.00	2.65	SAP	Saprolite	Friable saprolite; granitic texture partially preserved; clayey+sandy; brown-redish-orangish.
EAS-DD-0002	2.65	9.00	SAP	Saprolite	Compact saprolite with intervals of saprock; granitic texture preserved; brown-greyish+orangish; very sandy+clayey; moderate oxidation.
EAS-DD-0002	9.00	13.25	SRK	Grey-Pinkish Granite	Light pink-greyish granite, medium grained, ~10% mafic minerals (bt); slightly magnetic.
EAS-DD-0002	13.25	26.55	FRK	Grey-Pinkish Granite	Light grey-pinkish granite granite; fine to medium grained, ~10-15% mafic minerals; slightly magnetic; sharp angular contact enriched in mafic mineral and alteration halo
EAS-DD-0002	26.55	49.97	FRK	Dark Pink Granite	Darker pink granite, medium grained, ~10-15% mafic minerals, slightly magnetic; contact more fractured and moderate oxidation;

HoleID	FROM	TO	Zone	Lithology/Weathering	Logging
EAS-DD-0003	0.00	1.00	SOIL	Pedolith	Brown=redish clay+sandy, with medium-coarse quartz grains.
EAS-DD-0003	1.00	5.85	SAP	Saprolite	Friable saprolite brown=redish clay-sandy, portions with granitic texture partially preserved;
EAS-DD-0003	5.85	7.61	SAP	Saprolite	Friable saprolite; light pink orangish, sandy-silty, with granitic texture preserved;
EAS-DD-0003	7.61	12.35	SAP	Saprolite	Compact saprolite; granitic texture preserve; grey-brownish; very sandy, moderate oxidation.
EAS-DD-0003	12.35	14.50	SRK	Light Grey Granite	Light grey=pinckish granite, medium grained, 5-10% mafic minerals (bt); slightly to moderately magnetic, portions moderatly oxidized.
EAS-DD-0003	14.50	17.00	FRK	Light Grey Granite	Light grey=pinckish granite, medium grained, 5-10% mafic minerals (bt); slightly to moderately magnetic; fractures with strong oxidation.
EAS-DD-0003	17.00	17.45	FRK	Felsic Vein	Felsic vein, medium grained, white-pinkish, <5% mafic minerals; slightly magnetic.
EAS-DD-0003	17.45	21.38	FRK	Light Grey Granite	Light grey=pinckish granite, medium grained, 5-10% mafic minerals (bt); slightly to moderately magnetic.
EAS-DD-0003	21.38	30.65	FRK	Dark Grey Granite	Darker grey=pinckish granite, medium grained, 5-10% mafic minerals (bt); with garnet (?); moderately to strongly magnetic.
EAS-DD-0003	30.65	38.65	FRK	Light Pink Granite	Light pink granite, fine to medium grained, <5% mafic minerals, slightly magnetic.
EAS-DD-0003	38.65	44.30	FRK	Grey-Pinkish Granite	Light grey-pinkish granite granite; medium grained, ~10-15% mafic minerals (bt+hbl?); slightly to moderately magnetic;
EAS-DD-0003	44.30	100.23	FRK	Dark Grey Granite	Darker grey=pinckish granite, medium grained, 5-10% mafic minerals (bt); with garnet (?); moderately to strongly magnetic.
EAS-DD-0004	0.00	0.30	FRK	Pedolith	Brown=redish clay+sandy, with medium-coarse quartz grains.
EAS-DD-0004	0.30	7.90	SAP	Saprolite	Friable saprolite; granitic texture partially preserved; clayey+sandy; brown-redish-orangish.
EAS-DD-0004	7.90	9.50	SRK	Pegmatite Vein	Saprock; pegmatite texture, coarse grained; light-pink whitish; <5% mafic minerals, not magnetic.
EAS-DD-0004	9.50	10.93	FRK	Pegmatite Vein	Pegmatite texture, coarse grained; light-pink whitish; <5% mafic minerals, not magnetic.
EAS-DD-0004	10.93	19.70	FRK	Light Pink Granite	Light pink-grey granite, fine to medium grained, <5% mafic minerals, slightly to moderately magnetic. Portions with intense oxidadion.
EAS-DD-0004	19.70	43.90	FRK	Light Grey Granite	Light grey=pinckish granite, medium grained, 5-10% mafic minerals (bt); slightly to moderately magnetic; moderate to strong oxidion (in fractures and dessiminated).
EAS-DD-0004	43.90	51.07	FRK	Dark Grey Granite	Darker grey=pinckish granite, medium grained, 5-10% mafic minerals (bt); with garnet (?); moderately to strongly magnetic.
EAS-DD-0005	0.00	0.30	SOIL	Pedolith	Brown=redish clay+sandy, with medium-coarse quartz grains.
EAS-DD-0005	0.30	2.00	SAP	Saprolite	Friable saprolite; granitic texture partially preserved; clayey+sandy; brown-pinkish.
EAS-DD-0005	2.00	5.85	SAP	Saprolite	Friable saprolite; granitic texture partially preserved; sandy-silty; grey-pinkish.
EAS-DD-0005	5.85	7.30	SAP	Saprolite	Compact saprolite; granitic texture preserved; grey-orangish; very sandy, moderate oxidation.
EAS-DD-0005	7.30	8.75	SRK	Dark Grey Granite	Saprock of grey granite, medium grained, ~5% mafic minerals (bt); with garnet (?); moderately to strongly magnetic.
EAS-DD-0005	8.75	22.40	FRK	Dark Grey Granite	Darker grey granite, medium grained, ~5% mafic minerals (bt); with garnet (?); moderately to strongly magnetic.
EAS-DD-0005	22.40	27.80	FRK	Light Grey Granite	Light grey=yellowish granite, medium grained, 5-10% mafic minerals (bt), with garnet (?); slightly magnetic; slightly oxidized.
EAS-DD-0005	27.80	35.85	FRK	Dark Grey Granite	Darker grey granite=pinckish , medium grained, 10-15% mafic minerals (bt); moderately magnetic.
EAS-DD-0005	35.85	37.50	FRK	Light Grey Granite	Light grey=yellowish granite, medium grained, ~5% mafic minerals (bt), with garnet (?); slightly magnetic.
EAS-DD-0005	37.50	39.60	FRK	Dark Grey Granite	Darker grey granite=pinckish , medium grained, 10-15% mafic minerals (bt); moderately magnetic.
EAS-DD-0005	39.60	43.65	FRK	Light Grey Granite	Light grey=yellowish granite, medium grained, ~5% mafic minerals (bt), 1-2% with garnet (?); slightly magnetic, slightly oxidized.
EAS-DD-0005	43.65	65.65	FRK	Grey Green Granite	Light grey=greenish granite, medium grained, 5-10% mafic minerals (bt-hbl); moderately magnetic.
EAS-DD-0005	65.65	92.30	FRK	Light Grey Granite	Light grey granite, medium grained, ~5% mafic minerals (bt); moderately to strongly magnetic.
EAS-DD-0005	92.30	100.14	FRK	Light Grey Granite	Light grey=pinckish granite, fine to medium grained, 10-15% mafic minerals (bt); moderately magnetic.
EAS-DD-0006	0.00	0.50	SOIL	Pedolith	Dark brown=redish clay, with medium-coarse quartz grains.
EAS-DD-0006	0.50	11.00	SAP	Saprolite	Friable saprolite; brown-pinkish to orangish; clayey+sandy; granitic texture partially preserved; with medium-coarse quartz grains.
EAS-DD-0006	11.00	19.00	SAP	Saprolite	Compact saprolite; granitic texture preserved; sandy-silty; grey-orangish; slightly magnetic.
EAS-DD-0006	19.00	26.25	SRK	Grey-Pinkish Granite	Saprock of light grey-pinkish granite, medium grained, <5% mafic minerals (bt); slightly magnetic.
EAS-DD-0006	26.25	37.80	FRK	Grey-Pinkish Granite	Light grey-pinkish granite, fine to medium grained, <5% mafic minerals (bt); slightly magnetic.
EAS-DD-0006	37.80	50.27	FRK	Dark Grey Granite	Darker grey=pinckish granite, medium grained, ~5% mafic minerals (bt); moderately to strongly magnetic.
EAS-DD-0007	0.00	0.50	SOIL	Pedolith	Dark brown=redish clay, with medium-coarse quartz grains.
EAS-DD-0007	0.50	2.88	SAP	Saprolite	Friable saprolite; brown-orangish; clayey+sandy.
EAS-DD-0007	2.88	3.61	SAP	Saprolite	Friable saprolite; granitic texture partially preserved; sandy-silty; grey-pinkish.
EAS-DD-0007	3.61	6.44	SAP	Saprolite	Compact saprolite; granitic texture preserved; light brown-pinkish; sandy-silty;
EAS-DD-0007	6.44	9.08	SRK	Grey-Pinkish Granite	Saprock of light grey-pinkish granite, medium grained, <5% mafic minerals (bt); slightly magnetic.
EAS-DD-0007	9.08	11.50	SAP	Saprolite	Compact saprolite; granitic texture preserved; brown-grey-orangish; very sandy; moderate oxidation.
EAS-DD-0007	11.50	21.35	SRK	Grey-Pinkish Granite	Saprock of light grey-pinkish granite, medium grained, ~10% mafic minerals (bt); slightly magnetic, moderate oxidation.
EAS-DD-0007	21.35	28.00	FRK	Grey-Pinkish Granite	Light grey-pinkish granite, medium grained, ~10% mafic minerals (bt); slightly magnetic.
EAS-DD-0007	28.00	34.85	FRK	Dark Grey Granite	Darker grey granite=pinckish , medium grained, 5-10% mafic minerals (bt); moderately magnetic.
EAS-DD-0007	34.85	58.30	FRK	Grey-Pinkish Granite	Light grey-pinkish granite, medium grained, ~10% mafic minerals (bt); slightly magnetic, moderately to intensly oxidized zones/fractures.
EAS-DD-0007	58.30	100.15	FRK	Dark Grey Granite	Darker grey granite=pinckish , medium grained, 5-10% mafic minerals (bt); moderately magnetic.

For personal use only

HoleID	FROM	TO	Zone	Lithology/Weathering	Logging
EAS-DD-0008	0.00	1.80	SOIL	Pedolith	Dark brown clay, with medium-coarse quartz grains.
EAS-DD-0008	1.80	5.23	SAP	Saprolite	Friable saprolite; granitic texture partially preserved; sandy-silty; brown-orangish.
EAS-DD-0008	5.23	10.37	SAP	Saprolite	Compact saprolite; granitic texture preserved; mottled zone; brown-redish; sandy-silty;
EAS-DD-0008	10.37	22.00	SAP	Saprolite	Compact saprolite; granitic texture preserved; grey-orangish; sandy-silty;
EAS-DD-0008	22.00	33.55	SRK	Light Grey Granite	Saprock of light grey-pinkish granite, medium grained, ~10% mafic minerals (bt); slightly magnetic, little oxidation.
EAS-DD-0008	33.55	100.24	FRK	Dark Grey Granite	Darker grey granite-pinkish, medium grained, 5-10% mafic minerals (bt); moderately magnetic.
EAS-DD-0009	0.00	1.00	SOIL	Pedolith	Dark brown clay, with medium-coarse quartz grains.
EAS-DD-0009	1.00	4.10	SAP	Saprolite	Friable saprolite; granitic texture partially preserved; sandy-silty; brown-redish.
EAS-DD-0009	4.10	9.90	SAP	Saprolite	Compact saprolite; granitic texture preserved; brown-red-orangish; sandy-silty; intense oxidation.
EAS-DD-0009	9.90	17.50	SRK	Light Grey Granite	Saprock of light grey-pinkish granite, medium grained, ~10% mafic minerals (bt); slightly magnetic, moderate to intensely oxidized zones/fractures.
EAS-DD-0009	17.50	50.32	FRK	Light Grey Granite	Light grey-pinkish granite, fine to medium grained, ~10% mafic minerals (bt); moderately magnetic, moderate to intensely oxidized zones/fractures.
EAS-DD-0010	0.00	0.30	SOIL	Pedolith	Dark brown clay, with medium-coarse quartz grains.
EAS-DD-0010	0.30	7.20	SAP	Saprolite	Friable saprolite; granitic texture partially preserved; sandy-silty; light brown-orangish.
EAS-DD-0010	7.20	7.90	SAP	Saprolite	Compact saprolite; granitic texture preserved; brown-orangish; sandy-silty; moderate oxidation.
EAS-DD-0010	7.90	9.00	SRK	Dark Grey Granite	Saprock of darker grey-pinkish granite, medium grained, ~10% mafic minerals (bt); slightly magnetic, little oxidation.
EAS-DD-0010	9.00	61.35	FRK	Dark Grey Granite	Darker grey-pinkish granite, medium grained, 10-15% mafic minerals (bt); moderately magnetic, little oxidation.
EAS-DD-0010	61.35	71.85	FRK	Light Grey Granite	Light grey-pinkish granite, fine to medium grained, 5-10% mafic minerals (bt); slightly magnetic, little oxidation in fractures.
EAS-DD-0010	71.85	93.04	FRK	Dark Grey Granite	Darker grey-pinkish granite, medium grained, 10-15% mafic minerals (bt); moderately magnetic.
EAS-DD-0011	0.00	0.50	SOIL	Pedolith	Dark brown clay, with medium-coarse quartz grains.
EAS-DD-0011	0.50	15.20	SAP	Saprolite	Friable saprolite; granitic texture partially preserved; sandy-silty; light brown-red/orangish to grey.
EAS-DD-0011	15.20	17.00	SRK	Dark Grey Granite	Saprock of darker grey-pinkish granite, medium grained, 10-15% mafic minerals (bt); moderately magnetic, little oxidation.
EAS-DD-0011	17.00	31.80	FRK	Dark Grey Granite	Darker grey-pinkish granite, medium grained, 10-15% mafic minerals (bt); moderately magnetic.
EAS-DD-0011	31.80	48.61	FRK	Light Grey Granite	Light grey-pinkish granite, fine to medium grained, 5-10% mafic minerals (bt); slightly magnetic, moderate to intensely oxidized.
EAS-DD-0012	0.00	0.90	SOIL	Pedolith	Dark brown clay, with medium-coarse quartz grains.
EAS-DD-0012	0.90	21.00	SAP	Saprolite	Friable saprolite; granitic texture partially preserved; sandy-silty; brown-redish to orangish-grey.
EAS-DD-0012	21.00	26.50	SRK	Grey-Pinkish Granite	Saprock of light grey-pinkish granite, medium grained, <5% mafic minerals (bt); slightly magnetic.
EAS-DD-0012	26.50	32.70	FRK	Grey-Pinkish Granite	Light grey-pinkish granite, medium grained, ~5% mafic minerals (bt); slightly magnetic, moderate oxidation.
EAS-DD-0012	32.70	49.80	FRK	Dark Grey Granite	Darker grey-pinkish granite, medium grained, 10-15% mafic minerals (bt); moderately magnetic.
EAS-DD-0013	0.00	1.50	SOIL	Pedolith	Dark brown clay, with medium-coarse quartz grains.
EAS-DD-0013	1.50	8.75	SAP	Saprolite	Friable saprolite; granitic texture partially preserved; sandy-silty; brown-orangish.
EAS-DD-0013	8.75	21.80	SAP	Saprolite	Compact saprolite; granitic texture preserved; sandy-silty; light brown-orangish-grey
EAS-DD-0013	21.80	28.15	SRK	Grey-Pinkish Granite	Saprock of light grey-slightly pinkish granite, fine to medium grained, 5% mafic minerals (bt); slightly magnetic.
EAS-DD-0013	28.15	34.90	FRK	Grey-Pinkish Granite	Light grey-slightly pinkish granite, fine to medium grained, ~5% mafic minerals (bt); slightly magnetic, moderate oxidation.
EAS-DD-0013	34.90	48.16	FRK	Gneiss	Banded gneiss with strongly foliated mafic bands and few coarse-grained felsic migmatitic pockets.
EAS-DD-0014	0.00	0.50	SOIL	Pedolith	Dark brown clay, with medium-coarse quartz grains.
EAS-DD-0014	0.50	15.00	SAP	Saprolite	Friable saprolite; micaceous texture partially preserved; sandy-silty; brown-orangish.
EAS-DD-0014	15.00	25.60	SAP	Saprolite	Compact saprolite of gneiss; micaceous texture and banded texture preserved; sandy-silty; dark brown-redish calyey bands alterned with more sandy light grey-orangish bands.
EAS-DD-0014	25.60	34.00	SAP	Saprolite	Compact saprolite; granitic texture preserved; sandy-silty; light brown-orangish-grey
EAS-DD-0014	34.00	39.00	SRK	Grey-Pinkish Granite	Saprock of light grey-slightly pinkish granite, fine to medium grained, 5% mafic minerals (bt); slightly magnetic.
EAS-DD-0014	39.00	47.42	FRK	Grey-Pinkish Granite	Light grey-slightly pinkish granite, fine to medium grained, ~5% mafic minerals (bt); slightly magnetic, moderate oxidation.

Note: SAP: Saprolite; SRK: Saprock, FRK: Fresh Rock

Table 5A: Preliminary lithological descriptions of drillhole and auger samples (EAS-AD-0001, EAS-AD-0002, EAS-DD-0001-EAS-DD-0014) in East Salinas

For personal use only

Hole ID	Project	Regolith Thickness
EAS-DD-0001	East Salinas	15.20 m
EAS-DD-0002	East Salinas	9.00 m
EAS-DD-0003	East Salinas	12.35 m
EAS-DD-0004	East Salinas	7.90 m
EAS-DD-0005	East Salinas	7.35 m
EAS-DD-0006	East Salinas	19.00 m
EAS-DD-0007	East Salinas	11.50 m
EAS-DD-0008	East Salinas	22.00 m
EAS-DD-0009	East Salinas	9.90 m
EAS-DD-0010	East Salinas	7.20 m
EAS-DD-0011	East Salinas	15.20 m
EAS-DD-0012	East Salinas	21.00 m
EAS-DD-0013	East Salinas	21.50 m
EAS-DD-0014	East Salinas	25.00 m
EAS-AD-0001	East Salinas	13.00 m
EAS-AD-0002	East Salinas	6.50 m

Table 5B: Thickness of regolith zone up to saprolite base in EAS-DD-0001 to EAS-DD-0014 and EAS-AD-0001 and EAS-AD-0002

SampleID	HoleID	From	To	Interval	TREO Inc Y2O3ppm
EAS-AD-0001	EAS-AD-0001	0.00	1.00	1.00	2,270
EAS-AD-0002	EAS-AD-0001	1.00	2.00	1.00	2,321
EAS-AD-0003	EAS-AD-0001	2.00	3.00	1.00	3,372
EAS-AD-0004	EAS-AD-0001	3.00	4.00	1.00	3,214
EAS-AD-0005	EAS-AD-0001	4.00	5.00	1.00	2,233
EAS-AD-0006	EAS-AD-0001	5.00	6.00	1.00	1,766
EAS-AD-0007	EAS-AD-0001	6.00	7.00	1.00	1,829
EAS-AD-0008	EAS-AD-0001	7.00	8.00	1.00	3,854
EAS-AD-0009	EAS-AD-0001	8.00	9.00	1.00	4,874
EAS-AD-0010	EAS-AD-0001	9.00	10.00	1.00	1,446
EAS-AD-0011	EAS-AD-0001	10.00	11.00	1.00	1,539
EAS-AD-0012	EAS-AD-0001	11.00	12.00	1.00	1,408
EAS-AD-0013	EAS-AD-0001	12.00	13.00	1.00	1,309

SampleID	HoleID	From	To	Interval	TREO Inc Y2O3ppm
EAS-AD-0014	EAS-AD-0002	0.00	1.00	1.00	2,646
EAS-AD-0015	EAS-AD-0002	1.00	2.00	1.00	3,734
EAS-AD-0016	EAS-AD-0002	2.00	3.00	1.00	3,109
EAS-AD-0017	EAS-AD-0002	3.00	4.00	1.00	3,079
EAS-AD-0018	EAS-AD-0002	4.00	5.00	1.00	2,120
EAS-AD-0019	EAS-AD-0002	5.00	6.00	1.00	2,111
EAS-AD-0020	EAS-AD-0002	6.00	7.00	1.00	1,547

For personal use only

SampleID	HoleID	From	To	Interval	TREO Inc Y2O3ppm
EAS-DD-0001	EAS-DD-0001	0.00	2.00	2.00	2,282.5
EAS-DD-0002	EAS-DD-0001	2.00	3.00	1.00	3,056.9
EAS-DD-0003	EAS-DD-0001	3.00	4.00	1.00	4,873.2
EAS-DD-0004	EAS-DD-0001	4.00	5.00	1.00	3,660.8
EAS-DD-0005	EAS-DD-0001	5.00	6.00	1.00	2,455.2
EAS-DD-0006	EAS-DD-0001	6.00	7.00	1.00	2,800.6
EAS-DD-0008	EAS-DD-0001	7.00	8.00	1.00	2,537.0
EAS-DD-0009	EAS-DD-0001	8.00	9.00	1.00	2,326.6
EAS-DD-0010	EAS-DD-0001	9.00	10.00	1.00	3,104.0
EAS-DD-0011	EAS-DD-0001	10.00	11.00	1.00	2,048.5
EAS-DD-0012	EAS-DD-0001	11.00	12.00	1.00	1,465.0
EAS-DD-0013	EAS-DD-0001	12.00	13.00	1.00	835.8
EAS-DD-0015	EAS-DD-0001	13.00	14.00	1.00	787.6
EAS-DD-0016	EAS-DD-0001	14.00	15.00	1.00	751.8
EAS-DD-0017	EAS-DD-0001	15.00	16.00	1.00	224.0
EAS-DD-0018	EAS-DD-0001	16.00	17.00	1.00	577.5
EAS-DD-0020	EAS-DD-0001	17.00	18.00	1.00	470.8
EAS-DD-0021	EAS-DD-0001	18.00	19.00	1.00	480.0
EAS-DD-0022	EAS-DD-0001	19.00	20.00	1.00	604.0
EAS-DD-0023	EAS-DD-0001	20.00	21.00	1.00	635.9
EAS-DD-0024	EAS-DD-0001	21.00	22.00	1.00	404.3
EAS-DD-0026	EAS-DD-0001	22.00	23.00	1.00	370.2
EAS-DD-0027	EAS-DD-0001	23.00	24.00	1.00	515.1
EAS-DD-0028	EAS-DD-0001	24.00	25.00	1.00	721.8
EAS-DD-0029	EAS-DD-0001	25.00	26.00	1.00	476.2
EAS-DD-0030	EAS-DD-0001	26.00	27.00	1.00	453.4
EAS-DD-0032	EAS-DD-0001	27.00	28.00	1.00	642.0
EAS-DD-0033	EAS-DD-0001	28.00	29.00	1.00	712.4
EAS-DD-0034	EAS-DD-0001	29.00	30.17	1.17	662.5
EAS-DD-0035	EAS-DD-0001	30.17	31.00	0.83	613.8
EAS-DD-0036	EAS-DD-0001	31.00	32.00	1.00	666.7
EAS-DD-0038	EAS-DD-0001	32.00	33.00	1.00	492.3
EAS-DD-0039	EAS-DD-0001	33.00	34.00	1.00	349.1
EAS-DD-0040	EAS-DD-0001	34.00	35.00	1.00	327.5
EAS-DD-0041	EAS-DD-0001	35.00	36.00	1.00	518.7
EAS-DD-0042	EAS-DD-0001	36.00	37.00	1.00	368.5
EAS-DD-0043	EAS-DD-0001	37.00	38.00	1.00	562.7
EAS-DD-0044	EAS-DD-0001	38.00	39.00	1.00	431.2
EAS-DD-0045	EAS-DD-0001	39.00	40.00	1.00	366.6
EAS-DD-0047	EAS-DD-0001	40.00	41.00	1.00	347.8
EAS-DD-0048	EAS-DD-0001	41.00	42.00	1.00	530.6
EAS-DD-0049	EAS-DD-0001	42.00	43.00	1.00	675.6
EAS-DD-0050	EAS-DD-0001	43.00	44.00	1.00	697.9
EAS-DD-0051	EAS-DD-0001	44.00	45.00	1.00	1,621.6
EAS-DD-0052	EAS-DD-0001	45.00	46.05	1.05	1,190.1
EAS-DD-0054	EAS-DD-0001	46.05	47.00	0.95	1,609.3
EAS-DD-0055	EAS-DD-0001	47.00	48.00	1.00	1,301.7
EAS-DD-0056	EAS-DD-0001	48.00	49.00	1.00	674.9
EAS-DD-0057	EAS-DD-0001	49.00	50.00	1.00	893.7

For personal use only

SampleID	HoleID	From	To	Interval	TREO Inc Y2O3ppm
EAS-DD-0059	EAS-DD-0001	50.00	51.00	1.00	549.3
EAS-DD-0060	EAS-DD-0001	51.00	52.00	1.00	453.5
EAS-DD-0061	EAS-DD-0001	52.00	53.00	1.00	551.4
EAS-DD-0062	EAS-DD-0001	53.00	54.00	1.00	509.9
EAS-DD-0063	EAS-DD-0001	54.00	54.96	0.96	479.2
EAS-DD-0064	EAS-DD-0001	54.96	56.00	1.04	495.9
EAS-DD-0066	EAS-DD-0001	56.00	57.00	1.00	515.5
EAS-DD-0067	EAS-DD-0001	57.00	58.00	1.00	542.3
EAS-DD-0068	EAS-DD-0001	58.00	59.00	1.00	441.5
EAS-DD-0069	EAS-DD-0001	59.00	60.06	1.06	466.7
EAS-DD-0070	EAS-DD-0001	60.06	61.00	0.94	450.6
EAS-DD-0072	EAS-DD-0001	61.00	62.00	1.00	539.5
EAS-DD-0073	EAS-DD-0001	62.00	63.00	1.00	505.1
EAS-DD-0074	EAS-DD-0001	63.00	64.00	1.00	555.6
EAS-DD-0075	EAS-DD-0001	64.00	65.00	1.00	545.8
EAS-DD-0076	EAS-DD-0001	65.00	66.00	1.00	529.1
EAS-DD-0077	EAS-DD-0001	66.00	67.00	1.00	435.5
EAS-DD-0079	EAS-DD-0001	67.00	68.00	1.00	512.9
EAS-DD-0080	EAS-DD-0001	68.00	69.00	1.00	588.3
EAS-DD-0081	EAS-DD-0001	69.00	70.00	1.00	553.6
EAS-DD-0082	EAS-DD-0001	70.00	71.00	1.00	620.4
EAS-DD-0083	EAS-DD-0001	71.00	72.00	1.00	646.7
EAS-DD-0084	EAS-DD-0001	72.00	73.48	1.48	1,056.8
EAS-DD-0086	EAS-DD-0001	73.48	75.00	1.52	871.1
EAS-DD-0087	EAS-DD-0001	75.00	76.00	1.00	643.4
EAS-DD-0088	EAS-DD-0001	76.00	76.81	0.81	715.1
EAS-DD-0089	EAS-DD-0001	76.81	78.40	1.59	474.5
EAS-DD-0090	EAS-DD-0001	78.40	80.00	1.60	416.3
EAS-DD-0092	EAS-DD-0001	80.00	81.00	1.00	469.0
EAS-DD-0093	EAS-DD-0001	81.00	82.00	1.00	402.4
EAS-DD-0094	EAS-DD-0001	82.00	83.00	1.00	728.3
EAS-DD-0095	EAS-DD-0001	83.00	84.00	1.00	433.2
EAS-DD-0096	EAS-DD-0001	84.00	85.12	1.12	645.1
EAS-DD-0097	EAS-DD-0001	85.12	85.68	0.56	204.6
EAS-DD-0099	EAS-DD-0001	85.68	86.92	1.24	513.7
EAS-DD-0100	EAS-DD-0001	86.92	88.00	1.08	812.4
EAS-DD-0101	EAS-DD-0001	88.00	89.00	1.00	580.6
EAS-DD-0102	EAS-DD-0001	89.00	89.61	0.61	45.1
EAS-DD-0103	EAS-DD-0001	89.61	91.00	1.39	690.3
EAS-DD-0104	EAS-DD-0001	91.00	92.00	1.00	536.6
EAS-DD-0106	EAS-DD-0001	92.00	93.00	1.00	468.0
EAS-DD-0107	EAS-DD-0001	93.00	94.45	1.45	864.1
EAS-DD-0108	EAS-DD-0001	94.45	96.00	1.55	574.2
EAS-DD-0109	EAS-DD-0001	96.00	97.00	1.00	669.9
EAS-DD-0110	EAS-DD-0001	97.00	98.00	1.00	721.6
EAS-DD-0111	EAS-DD-0001	98.00	99.00	1.00	552.9
EAS-DD-0112	EAS-DD-0001	99.00	100.10	1.10	351.4

For personal use only

SampleID	HoleID	From	To	Interval	TREO Inc Y2O3ppm
EAS-DD-0113	EAS-DD-0002	0.00	1.00	1.00	1,232.3
EAS-DD-0115	EAS-DD-0002	1.00	2.00	1.00	1,511.4
EAS-DD-0116	EAS-DD-0002	2.00	3.00	1.00	1,583.6
EAS-DD-0117	EAS-DD-0002	3.00	4.00	1.00	1,690.0
EAS-DD-0118	EAS-DD-0002	4.00	5.00	1.00	2,127.5
EAS-DD-0119	EAS-DD-0002	5.00	6.00	1.00	1,068.6
EAS-DD-0120	EAS-DD-0002	6.00	7.00	1.00	1,046.6
EAS-DD-0121	EAS-DD-0002	7.00	8.00	1.00	1,592.2
EAS-DD-0122	EAS-DD-0002	8.00	9.00	1.00	760.1
EAS-DD-0124	EAS-DD-0002	9.00	10.00	1.00	993.3
EAS-DD-0125	EAS-DD-0002	10.00	11.00	1.00	941.5
EAS-DD-0126	EAS-DD-0002	11.00	12.00	1.00	552.4
EAS-DD-0127	EAS-DD-0002	12.00	13.00	1.00	712.4
EAS-DD-0128	EAS-DD-0002	13.00	14.00	1.00	471.9
EAS-DD-0129	EAS-DD-0002	14.00	15.20	1.20	924.4
EAS-DD-0130	EAS-DD-0002	15.20	16.00	0.80	852.3
EAS-DD-0132	EAS-DD-0002	16.00	17.00	1.00	1,192.7
EAS-DD-0133	EAS-DD-0002	17.00	18.00	1.00	1,370.2
EAS-DD-0134	EAS-DD-0002	18.00	19.00	1.00	1,308.8
EAS-DD-0135	EAS-DD-0002	19.00	20.00	1.00	1,056.5
EAS-DD-0136	EAS-DD-0002	20.00	21.00	1.00	987.7
EAS-DD-0138	EAS-DD-0002	21.00	22.00	1.00	1,084.7
EAS-DD-0139	EAS-DD-0002	22.00	23.00	1.00	1,069.7
EAS-DD-0140	EAS-DD-0002	23.00	24.00	1.00	702.2
EAS-DD-0141	EAS-DD-0002	24.00	25.00	1.00	1,136.1
EAS-DD-0142	EAS-DD-0002	25.00	26.55	1.55	1,092.3
EAS-DD-0144	EAS-DD-0002	26.55	28.00	1.45	940.6
EAS-DD-0145	EAS-DD-0002	28.00	29.00	1.00	940.0
EAS-DD-0146	EAS-DD-0002	29.00	30.00	1.00	1,067.4
EAS-DD-0147	EAS-DD-0002	30.00	31.00	1.00	1,154.1
EAS-DD-0148	EAS-DD-0002	31.00	32.00	1.00	1,214.7
EAS-DD-0150	EAS-DD-0002	32.00	33.00	1.00	1,229.9
EAS-DD-0151	EAS-DD-0002	33.00	34.00	1.00	1,102.2
EAS-DD-0152	EAS-DD-0002	34.00	35.00	1.00	907.5
EAS-DD-0153	EAS-DD-0002	35.00	36.00	1.00	677.8
EAS-DD-0154	EAS-DD-0002	36.00	37.00	1.00	1,649.1
EAS-DD-0155	EAS-DD-0002	37.00	38.00	1.00	1,226.5
EAS-DD-0156	EAS-DD-0002	38.00	39.00	1.00	849.7
EAS-DD-0158	EAS-DD-0002	39.00	40.00	1.00	896.6
EAS-DD-0159	EAS-DD-0002	40.00	41.00	1.00	773.8
EAS-DD-0160	EAS-DD-0002	41.00	42.00	1.00	802.1
EAS-DD-0161	EAS-DD-0002	42.00	43.00	1.00	1,064.5
EAS-DD-0162	EAS-DD-0002	43.00	44.00	1.00	1,008.1
EAS-DD-0163	EAS-DD-0002	44.00	45.00	1.00	831.8
EAS-DD-0164	EAS-DD-0002	45.00	46.00	1.00	1,330.4
EAS-DD-0165	EAS-DD-0002	46.00	47.00	1.00	1,345.0
EAS-DD-0166	EAS-DD-0002	47.00	48.00	1.00	1,252.9
EAS-DD-0168	EAS-DD-0002	48.00	49.00	1.00	1,500.6
EAS-DD-0169	EAS-DD-0002	49.00	49.97	0.97	874.3

For personal use only

SampleID	HoleID	From	To	Interval	TREO Inc Y2O3ppm
EAS-DD-0170	EAS-DD-0003	0.00	1.00	1.00	1,160.8
EAS-DD-0171	EAS-DD-0003	1.00	2.00	1.00	1,551.5
EAS-DD-0172	EAS-DD-0003	2.00	3.00	1.00	1,585.4
EAS-DD-0173	EAS-DD-0003	3.00	4.00	1.00	2,093.6
EAS-DD-0174	EAS-DD-0003	4.00	5.00	1.00	1,754.6
EAS-DD-0176	EAS-DD-0003	5.00	5.85	0.85	1,880.0
EAS-DD-0177	EAS-DD-0003	5.85	7.00	1.15	2,511.3
EAS-DD-0178	EAS-DD-0003	7.00	8.00	1.00	1,864.1
EAS-DD-0179	EAS-DD-0003	8.00	9.00	1.00	1,457.6
EAS-DD-0180	EAS-DD-0003	9.00	10.00	1.00	1,469.5
EAS-DD-0181	EAS-DD-0003	10.00	11.00	1.00	1,591.5
EAS-DD-0183	EAS-DD-0003	11.00	12.35	1.35	1,296.8
EAS-DD-0184	EAS-DD-0003	12.35	13.00	0.65	1,123.9
EAS-DD-0185	EAS-DD-0003	13.00	14.00	1.00	853.0
EAS-DD-0186	EAS-DD-0003	14.00	15.00	1.00	855.6
EAS-DD-0187	EAS-DD-0003	15.00	16.00	1.00	571.9
EAS-DD-0188	EAS-DD-0003	16.00	17.45	1.45	414.4
EAS-DD-0190	EAS-DD-0003	17.45	18.00	0.55	469.1
EAS-DD-0191	EAS-DD-0003	18.00	19.00	1.00	559.5
EAS-DD-0192	EAS-DD-0003	19.00	20.00	1.00	710.6
EAS-DD-0193	EAS-DD-0003	20.00	21.38	1.38	698.2
EAS-DD-0194	EAS-DD-0003	21.38	22.00	0.62	668.2
EAS-DD-0196	EAS-DD-0003	22.00	23.00	1.00	642.8
EAS-DD-0197	EAS-DD-0003	23.00	24.00	1.00	537.0
EAS-DD-0198	EAS-DD-0003	24.00	25.00	1.00	578.9
EAS-DD-0199	EAS-DD-0003	25.00	26.00	1.00	642.5
EAS-DD-0200	EAS-DD-0003	26.00	27.00	1.00	491.5
EAS-DD-0202	EAS-DD-0003	27.00	28.00	1.00	582.3
EAS-DD-0203	EAS-DD-0003	28.00	29.00	1.00	762.5
EAS-DD-0204	EAS-DD-0003	29.00	30.00	1.00	576.7
EAS-DD-0205	EAS-DD-0003	30.00	30.66	0.66	621.3
EAS-DD-0206	EAS-DD-0003	30.66	32.00	1.34	763.4
EAS-DD-0208	EAS-DD-0003	32.00	33.00	1.00	410.2
EAS-DD-0209	EAS-DD-0003	33.00	34.00	1.00	871.6
EAS-DD-0210	EAS-DD-0003	34.00	35.00	1.00	436.9
EAS-DD-0211	EAS-DD-0003	35.00	36.00	1.00	806.7
EAS-DD-0213	EAS-DD-0003	36.00	37.00	1.00	371.4
EAS-DD-0214	EAS-DD-0003	37.00	38.00	1.00	411.8
EAS-DD-0215	EAS-DD-0003	38.00	38.65	0.65	687.4
EAS-DD-0216	EAS-DD-0003	38.65	40.09	1.44	773.2
EAS-DD-0218	EAS-DD-0003	40.09	41.00	0.91	566.4
EAS-DD-0219	EAS-DD-0003	41.00	42.00	1.00	551.9
EAS-DD-0220	EAS-DD-0003	42.00	43.00	1.00	495.5
EAS-DD-0221	EAS-DD-0003	43.00	44.30	1.30	488.8
EAS-DD-0222	EAS-DD-0003	44.30	45.00	0.70	416.4
EAS-DD-0223	EAS-DD-0003	45.00	46.00	1.00	354.1
EAS-DD-0224	EAS-DD-0003	46.00	47.00	1.00	328.8
EAS-DD-0226	EAS-DD-0003	47.00	48.00	1.00	644.8
EAS-DD-0227	EAS-DD-0003	48.00	49.00	1.00	537.7
EAS-DD-0228	EAS-DD-0003	49.00	50.00	1.00	531.3

SampleID	HoleID	From	To	Interval	TREO Inc Y2O3ppm
EAS-DD-0229	EAS-DD-0003	50.00	51.00	1.00	609.5
EAS-DD-0230	EAS-DD-0003	51.00	52.00	1.00	516.1
EAS-DD-0231	EAS-DD-0003	52.00	53.00	1.00	659.0
EAS-DD-0233	EAS-DD-0003	53.00	54.00	1.00	718.9
EAS-DD-0234	EAS-DD-0003	54.00	55.00	1.00	513.9
EAS-DD-0235	EAS-DD-0003	55.00	56.00	1.00	523.5
EAS-DD-0236	EAS-DD-0003	56.00	57.00	1.00	482.8
EAS-DD-0237	EAS-DD-0003	57.00	58.00	1.00	425.7
EAS-DD-0239	EAS-DD-0003	58.00	59.00	1.00	425.5
EAS-DD-0240	EAS-DD-0003	59.00	60.00	1.00	525.6
EAS-DD-0241	EAS-DD-0003	60.00	61.00	1.00	881.2
EAS-DD-0242	EAS-DD-0003	61.00	62.00	1.00	771.1
EAS-DD-0243	EAS-DD-0003	62.00	63.00	1.00	731.6
EAS-DD-0244	EAS-DD-0003	63.00	64.00	1.00	865.0
EAS-DD-0245	EAS-DD-0003	64.00	65.00	1.00	5,349.2
EAS-DD-0246	EAS-DD-0003	65.00	66.00	1.00	1,199.6
EAS-DD-0248	EAS-DD-0003	66.00	67.00	1.00	1,530.3
EAS-DD-0249	EAS-DD-0003	67.00	68.00	1.00	1,167.5
EAS-DD-0250	EAS-DD-0003	68.00	69.00	1.00	1,078.0
EAS-DD-0251	EAS-DD-0003	69.00	70.00	1.00	733.5
EAS-DD-0252	EAS-DD-0003	70.00	71.00	1.00	536.5
EAS-DD-0253	EAS-DD-0003	71.00	72.00	1.00	373.8
EAS-DD-0255	EAS-DD-0003	72.00	73.00	1.00	1,395.7
EAS-DD-0256	EAS-DD-0003	73.00	74.00	1.00	926.5
EAS-DD-0257	EAS-DD-0003	74.00	75.00	1.00	1,390.8
EAS-DD-0258	EAS-DD-0003	75.00	76.00	1.00	397.5
EAS-DD-0259	EAS-DD-0003	76.00	77.00	1.00	782.9
EAS-DD-0261	EAS-DD-0003	77.00	78.00	1.00	933.8
EAS-DD-0262	EAS-DD-0003	78.00	79.00	1.00	603.9
EAS-DD-0263	EAS-DD-0003	79.00	80.00	1.00	807.9
EAS-DD-0264	EAS-DD-0003	80.00	81.00	1.00	786.8
EAS-DD-0265	EAS-DD-0003	81.00	82.00	1.00	702.5
EAS-DD-0267	EAS-DD-0003	82.00	83.00	1.00	677.9
EAS-DD-0268	EAS-DD-0003	83.00	84.00	1.00	1,621.9
EAS-DD-0269	EAS-DD-0003	84.00	85.00	1.00	825.8
EAS-DD-0270	EAS-DD-0003	85.00	86.00	1.00	1,294.9
EAS-DD-0271	EAS-DD-0003	86.00	87.00	1.00	1,054.9
EAS-DD-0272	EAS-DD-0003	87.00	88.00	1.00	800.8
EAS-DD-0274	EAS-DD-0003	88.00	89.00	1.00	656.6
EAS-DD-0275	EAS-DD-0003	89.00	90.00	1.00	545.8
EAS-DD-0276	EAS-DD-0003	90.00	91.00	1.00	821.2
EAS-DD-0277	EAS-DD-0003	91.00	92.00	1.00	837.7
EAS-DD-0278	EAS-DD-0003	92.00	93.00	1.00	548.3
EAS-DD-0279	EAS-DD-0003	93.00	94.00	1.00	483.9
EAS-DD-0280	EAS-DD-0003	94.00	95.00	1.00	493.0
EAS-DD-0281	EAS-DD-0003	95.00	96.00	1.00	710.2
EAS-DD-0283	EAS-DD-0003	96.00	97.00	1.00	178.9
EAS-DD-0284	EAS-DD-0003	97.00	98.00	1.00	94.3
EAS-DD-0285	EAS-DD-0003	98.00	99.00	1.00	86.4
EAS-DD-0286	EAS-DD-0003	99.00	100.23	1.23	62.4

For personal use only

For personal use only

SampleID	HoleID	From	To	Interval	TREO Inc Y2O3ppm
EAS-DD-0287	EAS-DD-0004	0.00	1.00	1.00	3,456.4
EAS-DD-0288	EAS-DD-0004	1.00	2.00	1.00	5,057.5
EAS-DD-0289	EAS-DD-0004	2.00	3.00	1.00	2,338.3
EAS-DD-0290	EAS-DD-0004	3.00	4.00	1.00	3,702.5
EAS-DD-0291	EAS-DD-0004	4.00	5.00	1.00	4,974.0
EAS-DD-0293	EAS-DD-0004	5.00	6.00	1.00	3,109.0
EAS-DD-0294	EAS-DD-0004	6.00	7.00	1.00	1,631.6
EAS-DD-0295	EAS-DD-0004	7.00	7.90	0.90	1,007.5
EAS-DD-0296	EAS-DD-0004	7.90	9.00	1.10	268.0
EAS-DD-0297	EAS-DD-0004	9.00	10.00	1.00	196.5
EAS-DD-0299	EAS-DD-0004	10.00	10.93	0.93	242.4
EAS-DD-0300	EAS-DD-0004	10.93	12.00	1.07	1,007.3
EAS-DD-0301	EAS-DD-0004	12.00	13.00	1.00	1,019.7
EAS-DD-0302	EAS-DD-0004	13.00	14.00	1.00	1,037.8
EAS-DD-0303	EAS-DD-0004	14.00	15.00	1.00	1,180.7
EAS-DD-0305	EAS-DD-0004	15.00	16.00	1.00	767.2
EAS-DD-0306	EAS-DD-0004	16.00	17.00	1.00	846.1
EAS-DD-0307	EAS-DD-0004	17.00	18.00	1.00	1,054.1
EAS-DD-0308	EAS-DD-0004	18.00	19.68	1.68	1,078.2
EAS-DD-0310	EAS-DD-0004	19.68	21.00	1.32	920.0
EAS-DD-0311	EAS-DD-0004	21.00	22.00	1.00	979.7
EAS-DD-0312	EAS-DD-0004	22.00	23.00	1.00	1,213.8
EAS-DD-0313	EAS-DD-0004	23.00	23.92	0.92	1,162.0
EAS-DD-0314	EAS-DD-0004	23.92	25.00	1.08	1,013.5
EAS-DD-0315	EAS-DD-0004	25.00	26.00	1.00	1,258.5
EAS-DD-0317	EAS-DD-0004	26.00	27.00	1.00	978.0
EAS-DD-0318	EAS-DD-0004	27.00	28.00	1.00	774.1
EAS-DD-0319	EAS-DD-0004	28.00	29.00	1.00	983.3
EAS-DD-0320	EAS-DD-0004	29.00	30.00	1.00	1,038.1
EAS-DD-0321	EAS-DD-0004	30.00	31.00	1.00	1,238.0
EAS-DD-0322	EAS-DD-0004	31.00	32.00	1.00	1,016.4
EAS-DD-0324	EAS-DD-0004	32.00	33.00	1.00	1,263.0
EAS-DD-0325	EAS-DD-0004	33.00	34.00	1.00	1,095.9
EAS-DD-0326	EAS-DD-0004	34.00	35.00	1.00	1,274.0
EAS-DD-0327	EAS-DD-0004	35.00	36.00	1.00	1,294.2
EAS-DD-0328	EAS-DD-0004	36.00	37.00	1.00	1,127.2
EAS-DD-0329	EAS-DD-0004	37.00	38.00	1.00	1,195.4
EAS-DD-0331	EAS-DD-0004	38.00	39.00	1.00	1,175.6
EAS-DD-0332	EAS-DD-0004	39.00	40.00	1.00	1,155.9
EAS-DD-0333	EAS-DD-0004	40.00	41.00	1.00	1,082.7
EAS-DD-0334	EAS-DD-0004	41.00	42.00	1.00	1,172.5
EAS-DD-0335	EAS-DD-0004	42.00	43.00	1.00	921.9
EAS-DD-0337	EAS-DD-0004	43.00	43.91	0.91	1,111.7
EAS-DD-0338	EAS-DD-0004	43.91	45.00	1.09	1,110.9
EAS-DD-0339	EAS-DD-0004	45.00	46.00	1.00	1,156.6
EAS-DD-0340	EAS-DD-0004	46.00	47.00	1.00	1,318.2
EAS-DD-0341	EAS-DD-0004	47.00	48.00	1.00	1,151.8
EAS-DD-0343	EAS-DD-0004	48.00	49.00	1.00	1,078.8
EAS-DD-0344	EAS-DD-0004	49.00	50.00	1.00	1,240.8
EAS-DD-0345	EAS-DD-0004	50.00	51.07	1.07	1,291.6

For personal use only

SampleID	HoleID	From	To	Interval	TREO Inc Y2O3ppm
EAS-DD-0005	EAS-DD-0346	0.00	1.00	1.00	1,439
EAS-DD-0005	EAS-DD-0347	1.00	2.00	1.00	1,832
EAS-DD-0005	EAS-DD-0348	2.00	3.00	1.00	1,770
EAS-DD-0005	EAS-DD-0349	3.00	4.00	1.00	2,172
EAS-DD-0005	EAS-DD-0350	4.00	5.00	1.00	2,019
EAS-DD-0005	EAS-DD-0351	5.00	6.00	1.00	1,549
EAS-DD-0005	EAS-DD-0352	6.00	7.30	1.30	1,628
EAS-DD-0005	EAS-DD-0354	7.30	8.00	0.70	1,475
EAS-DD-0005	EAS-DD-0355	8.00	9.00	1.00	1,161
EAS-DD-0006	EAS-DD-0459	0.00	1.00	1.00	2,799
EAS-DD-0006	EAS-DD-0460	1.00	2.00	1.00	4,326
EAS-DD-0006	EAS-DD-0461	2.00	3.00	1.00	3,393
EAS-DD-0006	EAS-DD-0462	3.00	4.00	1.00	4,448
EAS-DD-0006	EAS-DD-0463	4.00	5.00	1.00	5,777
EAS-DD-0006	EAS-DD-0465	5.00	6.00	1.00	3,847
EAS-DD-0006	EAS-DD-0466	6.00	7.00	1.00	4,137
EAS-DD-0006	EAS-DD-0467	7.00	8.00	1.00	12,732
EAS-DD-0006	EAS-DD-0468	8.00	9.00	1.00	7,296
EAS-DD-0006	EAS-DD-0469	9.00	10.00	1.00	4,127
EAS-DD-0006	EAS-DD-0471	10.00	11.00	1.00	4,293
EAS-DD-0006	EAS-DD-0472	11.00	12.00	1.00	5,303
EAS-DD-0006	EAS-DD-0473	12.00	13.00	1.00	4,735
EAS-DD-0006	EAS-DD-0474	13.00	14.00	1.00	7,271
EAS-DD-0006	EAS-DD-0475	14.00	15.00	1.00	4,012
EAS-DD-0006	EAS-DD-0477	15.00	16.00	1.00	3,254
EAS-DD-0006	EAS-DD-0478	16.00	17.00	1.00	3,245
EAS-DD-0518	EAS-DD-0007	0.00	1.00	1.00	2,793
EAS-DD-0519	EAS-DD-0007	1.00	2.00	1.00	2,686
EAS-DD-0520	EAS-DD-0007	2.00	3.00	1.00	2,588
EAS-DD-0521	EAS-DD-0007	3.00	4.00	1.00	1,236
EAS-DD-0522	EAS-DD-0007	4.00	5.00	1.00	2,198
EAS-DD-0523	EAS-DD-0007	5.00	6.44	1.44	2,687
EAS-DD-0007	EAS-DD-0525	6.44	8.00	1.56	1,385
EAS-DD-0007	EAS-DD-0526	8.00	9.08	1.08	1,077
EAS-DD-0527	EAS-DD-0007	9.08	10.00	0.92	1,284
EAS-DD-0528	EAS-DD-0007	10.00	11.50	1.50	1,055
EAS-DD-0529	EAS-DD-0007	11.50	13.00	1.50	759
EAS-DD-0531	EAS-DD-0007	13.00	14.00	1.00	903
EAS-DD-0532	EAS-DD-0007	14.00	15.00	1.00	667

For personal use only

SampleID	HoleID	From	To	Interval	TREO Inc Y2O3ppm
EAS-DD-0632	EAS-DD-0008	0.00	1.00	1.00	422
EAS-DD-0633	EAS-DD-0008	1.00	2.00	1.00	386
EAS-DD-0634	EAS-DD-0008	2.00	3.00	1.00	440
EAS-DD-0635	EAS-DD-0008	3.00	4.00	1.00	448
EAS-DD-0636	EAS-DD-0008	4.00	5.25	1.25	416
EAS-DD-0638	EAS-DD-0008	5.25	6.00	0.75	377
EAS-DD-0639	EAS-DD-0008	6.00	7.00	1.00	374
EAS-DD-0640	EAS-DD-0008	7.00	8.00	1.00	492
EAS-DD-0641	EAS-DD-0008	8.00	9.00	1.00	421
EAS-DD-0642	EAS-DD-0008	9.00	10.37	1.37	401
EAS-DD-0643	EAS-DD-0008	10.37	12.00	1.63	329
EAS-DD-0645	EAS-DD-0008	12.00	13.00	1.00	577
EAS-DD-0646	EAS-DD-0008	13.00	14.00	1.00	714
EAS-DD-0647	EAS-DD-0008	14.00	15.00	1.00	1,008
EAS-DD-0649	EAS-DD-0008	15.00	16.00	1.00	3,900
EAS-DD-0650	EAS-DD-0008	16.00	17.00	1.00	6,168
EAS-DD-0651	EAS-DD-0008	17.00	18.00	1.00	3,933
EAS-DD-0652	EAS-DD-0008	18.00	19.00	1.00	2,288
EAS-DD-0653	EAS-DD-0008	19.00	20.00	1.00	2,571
EAS-DD-0009	EAS-DD-0747	0.00	1.00	1.00	526
EAS-DD-0009	EAS-DD-0748	1.00	2.00	1.00	1,545
EAS-DD-0009	EAS-DD-0749	2.00	3.00	1.00	1,332
EAS-DD-0009	EAS-DD-0750	3.00	4.00	1.00	1,401
EAS-DD-0009	EAS-DD-0751	4.00	5.00	1.00	729
EAS-DD-0009	EAS-DD-0752	5.00	6.57	1.57	1,136
EAS-DD-0009	EAS-DD-0754	6.57	8.00	1.43	1,640
EAS-DD-0009	EAS-DD-0755	8.00	9.00	1.00	1,288
EAS-DD-0009	EAS-DD-0756	9.00	10.00	1.00	1,744
EAS-DD-0009	EAS-DD-0757	10.00	11.00	1.00	2,585
EAS-DD-0009	EAS-DD-0758	11.00	11.88	0.88	3,707
EAS-DD-0803	EAS-DD-0010	0.00	1.00	1.00	1,793
EAS-DD-0804	EAS-DD-0010	1.00	2.00	1.00	1,356
EAS-DD-0805	EAS-DD-0010	2.00	3.00	1.00	1,050
EAS-DD-0806	EAS-DD-0010	3.00	4.00	1.00	1,657
EAS-DD-0808	EAS-DD-0010	4.00	5.00	1.00	1,670
EAS-DD-0809	EAS-DD-0010	5.00	6.00	1.00	2,068
EAS-DD-0810	EAS-DD-0010	6.00	7.00	1.00	1,463
EAS-DD-0811	EAS-DD-0010	7.00	7.87	0.87	935
EAS-DD-0911	EAS-DD-0011	0.00	1.00	1.00	1,124
EAS-DD-0912	EAS-DD-0011	1.00	2.00	1.00	1,654
EAS-DD-0913	EAS-DD-0011	2.00	3.00	1.00	1,592
EAS-DD-0915	EAS-DD-0011	3.00	4.00	1.00	1,731
EAS-DD-0916	EAS-DD-0011	4.00	5.00	1.00	1,652
EAS-DD-0917	EAS-DD-0011	5.00	6.00	1.00	1,708
EAS-DD-0918	EAS-DD-0011	6.00	7.00	1.00	1,972
EAS-DD-0919	EAS-DD-0011	7.00	8.00	1.00	1,792
EAS-DD-0920	EAS-DD-0011	8.00	9.00	1.00	1,496
EAS-DD-0922	EAS-DD-0011	9.00	10.00	1.00	1,416
EAS-DD-0923	EAS-DD-0011	10.00	11.00	1.00	1,491
EAS-DD-0924	EAS-DD-0011	11.00	12.00	1.00	1,557
EAS-DD-0925	EAS-DD-0011	12.00	13.00	1.00	1,812
EAS-DD-0926	EAS-DD-0011	13.00	14.62	1.62	1,243
EAS-DD-0928	EAS-DD-0011	14.62	15.20	0.58	1,417

For personal use only

SampleID	HoleID	From	To	Interval	TREO Inc Y2O3ppm
EAS-DD-0967	EAS-DD-0012	0.00	1.00	1.00	515
EAS-DD-0968	EAS-DD-0012	1.00	2.00	1.00	796
EAS-DD-0969	EAS-DD-0012	2.00	3.00	1.00	766
EAS-DD-0970	EAS-DD-0012	3.00	4.00	1.00	646
EAS-DD-0971	EAS-DD-0012	4.00	5.00	1.00	537
EAS-DD-0973	EAS-DD-0012	5.00	6.00	1.00	719
EAS-DD-0974	EAS-DD-0012	6.00	7.00	1.00	871
EAS-DD-0975	EAS-DD-0012	7.00	8.00	1.00	1,153
EAS-DD-0976	EAS-DD-0012	8.00	9.00	1.00	993
EAS-DD-0977	EAS-DD-0012	9.00	9.91	0.91	1,433
EAS-DD-0978	EAS-DD-0012	9.91	11.00	1.09	2,067
EAS-DD-0980	EAS-DD-0012	11.00	12.00	1.00	1,315
EAS-DD-0981	EAS-DD-0012	12.00	13.00	1.00	1,572
EAS-DD-0982	EAS-DD-0012	13.00	14.00	1.00	950
EAS-DD-0983	EAS-DD-0012	14.00	15.00	1.00	1,387
EAS-DD-0985	EAS-DD-0012	15.00	16.00	1.00	1,289
EAS-DD-0986	EAS-DD-0012	16.00	17.00	1.00	1,196
EAS-DD-0987	EAS-DD-0012	17.00	18.00	1.00	2,328
EAS-DD-0988	EAS-DD-0012	18.00	19.00	1.00	1,283
EAS-DD-0989	EAS-DD-0012	19.00	20.00	1.00	1,137
EAS-DD-1023	EAS-DD-0013	0.00	1.00	1.00	195
EAS-DD-1024	EAS-DD-0013	1.00	2.00	1.00	210
EAS-DD-1025	EAS-DD-0013	2.00	3.00	1.00	244
EAS-DD-1026	EAS-DD-0013	3.00	4.00	1.00	279
EAS-DD-1027	EAS-DD-0013	4.00	5.00	1.00	237
EAS-DD-1029	EAS-DD-0013	5.00	6.00	1.00	256
EAS-DD-1030	EAS-DD-0013	6.00	7.00	1.00	284
EAS-DD-1031	EAS-DD-0013	7.00	8.00	1.00	279
EAS-DD-1032	EAS-DD-0013	8.00	9.00	1.00	303
EAS-DD-1033	EAS-DD-0013	9.00	10.00	1.00	446
EAS-DD-1035	EAS-DD-0013	10.00	11.00	1.00	342
EAS-DD-1036	EAS-DD-0013	11.00	12.00	1.00	603
EAS-DD-1037	EAS-DD-0013	12.00	13.00	1.00	452
EAS-DD-1038	EAS-DD-0013	13.00	14.00	1.00	554
EAS-DD-1039	EAS-DD-0013	14.00	15.00	1.00	1,151
EAS-DD-1041	EAS-DD-0013	15.00	16.00	1.00	759
EAS-DD-1042	EAS-DD-0013	16.00	17.00	1.00	2,645
EAS-DD-1080	EAS-DD-0014	0.00	1.00	1.00	204
EAS-DD-1081	EAS-DD-0014	1.00	2.00	1.00	221
EAS-DD-1082	EAS-DD-0014	2.00	3.00	1.00	236
EAS-DD-1083	EAS-DD-0014	3.00	4.00	1.00	259
EAS-DD-1084	EAS-DD-0014	4.00	5.00	1.00	251
EAS-DD-1086	EAS-DD-0014	5.00	6.00	1.00	254
EAS-DD-1087	EAS-DD-0014	6.00	7.00	1.00	243
EAS-DD-1088	EAS-DD-0014	7.00	8.00	1.00	306
EAS-DD-1089	EAS-DD-0014	8.00	9.00	1.00	381
EAS-DD-1090	EAS-DD-0014	9.00	10.00	1.00	336
EAS-DD-1092	EAS-DD-0014	10.00	11.00	1.00	240
EAS-DD-1093	EAS-DD-0014	11.00	12.00	1.00	216
EAS-DD-1094	EAS-DD-0014	12.00	13.00	1.00	196
EAS-DD-1095	EAS-DD-0014	13.00	14.00	1.00	227
EAS-DD-1096	EAS-DD-0014	14.00	15.00	1.00	221
EAS-DD-1098	EAS-DD-0014	15.00	16.00	1.00	344
EAS-DD-1099	EAS-DD-0014	16.00	17.00	1.00	411
EAS-DD-1100	EAS-DD-0014	17.00	18.00	1.00	424
EAS-DD-1101	EAS-DD-0014	18.00	19.00	1.00	292
EAS-DD-1102	EAS-DD-0014	19.00	20.00	1.00	208

Table 6: Significant results of TREO from auger hole samples of EAS-AD-0001 to EAS-AD-0002 along with previous results in East Salinas Medina Intrusive Complex

Summary of leach (desorption) recovery of REE metals for drillholes EAS-AD-0001 to EAS-AD-0002⁶including previous results

RECOVERIES %																									
#	HOLE ID	FROM	TO	INTERVAL	TREO_ppm	LREO_ppm	HREO_ppm	NdPr	MREO	La_ppm	Ce_ppm	Pr_ppm	Nd_ppm	Sm_ppm	Eu_ppm	Gd_ppm	Tb_ppm	Dy_ppm	Ho_ppm	Er_ppm	Tm_ppm	Yb_ppm	Lu_ppm	Y_ppm	
1	EAS-AD-0001	0.00	1.00	1.00	15%	14%	35%	25%	26%	23%	2%	24%	26%	26%	26%	32%	32%	31%	35%	34%	30%	25%	24%	39%	
2	EAS-AD-0001	1.00	2.00	1.00	27%	27%	29%	43%	42%	41%	1%	44%	43%	36%	31%	32%	29%	25%	28%	25%	23%	19%	18%	29%	
3	EAS-AD-0001	2.00	3.00	1.00	5%	5%	3%	7%	7%	7%	0%	7%	7%	5%	5%	4%	4%	3%	3%	3%	3%	2%	19%	3%	
4	EAS-AD-0001	3.00	4.00	1.00	23%	24%	17%	35%	34%	31%	1%	35%	34%	30%	23%	21%	19%	17%	18%	18%	17%	15%	15%	16%	
5	EAS-AD-0001	4.00	5.00	1.00	29%	29%	33%	48%	47%	44%	1%	47%	48%	41%	34%	37%	34%	32%	35%	32%	29%	26%	24%	33%	
6	EAS-AD-0001	5.00	6.00	1.00	30%	30%	34%	49%	48%	44%	2%	49%	49%	42%	38%	37%	36%	31%	34%	32%	32%	26%	25%	34%	
7	EAS-AD-0001	6.00	7.00	1.00	14%	13%	16%	18%	18%	18%	1%	18%	18%	18%	16%	17%	17%	15%	17%	15%	14%	13%	11%	16%	
8	EAS-AD-0001	7.00	8.00	1.00	59%	56%	83%	80%	80%	49%	25%	80%	80%	81%	73%	77%	79%	73%	78%	74%	79%	68%	67%	89%	
9	EAS-AD-0001	8.00	9.00	1.00	56%	52%	84%	85%	84%	39%	27%	84%	85%	85%	76%	80%	84%	77%	80%	77%	77%	70%	72%	89%	
10	EAS-AD-0001	9.00	10.00	1.00	46%	46%	50%	61%	60%	57%	8%	61%	61%	54%	51%	53%	52%	48%	52%	48%	44%	40%	38%	51%	
11	EAS-AD-0001	10.00	11.00	1.00	36%	35%	44%	50%	50%	47%	5%	49%	51%	46%	42%	44%	43%	39%	43%	38%	38%	37%	29%	46%	
12	EAS-AD-0001	11.00	12.00	1.00	25%	24%	40%	35%	35%	33%	4%	34%	36%	35%	33%	36%	35%	33%	38%	37%	40%	32%	32%	44%	
13	EAS-AD-0001	12.00	13.00	1.00	21%	19%	33%	31%	30%	30%	3%	29%	31%	30%	26%	32%	33%	29%	34%	30%	29%	25%	20%	37%	
14	EAS-AD-0002	0.00	1.00	1.00	21%	21%	23%	28%	28%	32%	2%	28%	28%	22%	23%	22%	19%	22%	19%	20%	12%	17%	25%		
15	EAS-AD-0002	1.00	2.00	1.00	19%	19%	16%	23%	23%	26%	0%	23%	24%	17%	17%	16%	15%	13%	13%	12%	11%	8%	8%	18%	
16	EAS-AD-0002	2.00	3.00	1.00	18%	18%	18%	24%	23%	27%	0%	23%	24%	18%	16%	19%	17%	14%	15%	13%	12%	8%	11%	19%	
17	EAS-AD-0002	3.00	4.00	1.00	13%	13%	16%	18%	18%	19%	0%	17%	18%	14%	14%	16%	14%	13%	13%	11%	11%	6%	9%	18%	
18	EAS-AD-0002	4.00	5.00	1.00	31%	30%	41%	38%	38%	41%	1%	36%	39%	34%	33%	39%	32%	37%	33%	29%	22%	24%	24%	46%	
19	EAS-AD-0002	5.00	6.00	1.00	22%	20%	40%	29%	29%	32%	1%	28%	30%	27%	32%	34%	35%	30%	34%	34%	28%	26%	24%	46%	
20	EAS-AD-0002	6.00	7.00	1.00	13%	11%	33%	20%	20%	18%	1%	18%	21%	15%	20%	21%	26%	23%	30%	26%	25%	19%	18%	40%	

RECOVERIES %																									
#	HOLE ID	FROM	TO	INTERVAL	TREO_ppm	LREO_ppm	HREO_ppm	NdPr	MREO	La_ppm	Ce_ppm	Pr_ppm	Nd_ppm	Sm_ppm	Eu_ppm	Gd_ppm	Tb_ppm	Dy_ppm	Ho_ppm	Er_ppm	Tm_ppm	Yb_ppm	Lu_ppm	Y_ppm	
1	EAS-DD-0001	0.00	2.00	2.00	34%	34%	38%	53%	52%	51%	4%	52%	54%	39%	36%	42%	35%	32%	33%	31%	26%	19%	16%	40%	
2	EAS-DD-0001	2.00	3.00	1.00	34%	35%	30%	50%	49%	45%	1%	49%	51%	37%	31%	35%	30%	25%	25%	24%	20%	15%	15%	31%	
3	EAS-DD-0001	3.00	4.00	1.00	18%	19%	12%	24%	23%	23%	2%	24%	24%	18%	15%	15%	12%	11%	11%	10%	9%	7%	7%	12%	
4	EAS-DD-0001	4.00	5.00	1.00	28%	28%	22%	39%	38%	36%	1%	38%	40%	28%	25%	26%	23%	20%	19%	18%	15%	12%	11%	22%	
5	EAS-DD-0001	5.00	6.00	1.00	38%	38%	38%	52%	51%	50%	1%	51%	53%	40%	38%	42%	35%	31%	32%	28%	22%	16%	14%	41%	
6	EAS-DD-0001	6.00	7.00	1.00	33%	33%	40%	48%	47%	43%	0%	47%	48%	38%	36%	42%	36%	34%	33%	28%	21%	20%	24%	44%	
7	EAS-DD-0001	7.00	8.00	1.00	33%	33%	38%	48%	47%	44%	0%	45%	48%	38%	36%	40%	34%	31%	31%	28%	24%	15%	15%	42%	
8	EAS-DD-0001	8.00	9.00	1.00	29%	28%	38%	40%	39%	38%	0%	37%	41%	32%	31%	37%	31%	28%	29%	28%	23%	15%	14%	43%	
9	EAS-DD-0001	9.00	10.00	1.00	32%	29%	56%	49%	49%	40%	0%	45%	50%	44%	46%	53%	52%	50%	52%	51%	46%	40%	35%	60%	
10	EAS-DD-0001	10.00	11.00	1.00	46%	42%	69%	62%	62%	54%	0%	57%	64%	58%	60%	68%	64%	62%	66%	66%	58%	49%	47%	73%	
11	EAS-DD-0001	11.00	12.00	1.00	26%	22%	55%	37%	38%	36%	0%	33%	39%	35%	37%	48%	45%	43%	49%	49%	37%	33%	33%	62%	
12	EAS-DD-0001	12.00	13.00	1.00	15%	11%	49%	21%	22%	17%	0%	17%	23%	23%	26%	38%	39%	37%	43%	41%	37%	31%	26%	57%	
13	EAS-DD-0001	13.00	14.00	1.00	3%	1%	16%	4%	4%	2%	0%	3%	4%	4%	6%	10%	9%	10%	12%	13%	8%	19%	13%	20%	
14	EAS-DD-0002	0.00	1.00	1.00	21%	21%	22%	31%	31%	35%	4%	30%	31%	26%	23%	28%	23%	20%	20%	16%	14%	13%	8%	22%	
15	EAS-DD-0002	1.00	2.00	1.00	24%	24%	25%	33%	32%	44%	2%	31%	33%	26%	24%	28%	23%	20%	19%	17%	15%	11%	10%	27%	
16	EAS-DD-0002	2.00	3.00	1.00	31%	31%	28%	39%	39%	46%	1%	37%	40%	32%	28%	32%	28%	25%	26%	22%	22%	17%	15%	30%	
17	EAS-DD-0002	3.00	4.00	1.00	32%	32%	35%	38%	38%	46%	0%	36%	39%	33%	30%	35%	31%	29%	30%	27%	27%	22%	19%	38%	
18	EAS-DD-0002	4.00	5.00	1.00	14%	13%	16%	18%	18%	19%	0%	17%	19%	16%	16%	17%	15%	14%	15%	14%	14%	13%	10%	17%	
19	EAS-DD-0002	5.00	6.00	1.00	22%	22%	22%	25%	25%	32%	0%	24%	25%	20%	19%	24%	20%	19%	19%	19%	17%	12%	15%	23%	
20	EAS-DD-0002	6.00	7.00	1.00	18%	17%	24%	18%	18%	27%	0%	17%	19%	16%	17%	21%	18%	19%	19%	19%	17%	12%	10%	26%	
21	EAS-DD-0002	7.00	8.00	1.00	4%	4%	5%	4%	4%	7%	0%	4%	4%	3%	8%	4%	4%	3%	4%	3%	4%	3%	3%	5%	
22	EAS-DD-0003	0.00	1.00	1.00	9%	9%	15%	22%	21%	21%	4%	22%	22%	17%	14%	14%	12%	12%	11%	8%	7%	22%	13%	15%	
23	EAS-DD-0003	1.00	2.00	1.00	8%	8%	11%	19%	18%	22%	1%	19%	19%	13%	14%	14%	9%	8%	6%	7%	4%	18%	12%	10%	
24	EAS-DD-0003	2.00	3.00	1.00	10%	10%	17%	26%	26%	26%	2%	25%	26%	22%	19%	21%	16%	16%	14%	11%	8%	17%	14%	16%	
25	EAS-DD-0003	3.00	4.00	1.00	16%	15%	28%	40%	40%	40%	2%	39%	40%	32%	34%	34%	31%	26%	24%	22%	19%	17%	13%	28%	
26	EAS-DD-0003	4.00	5.00	1.00	15%	15%	21%	36%	35%	35%	1%	36%	35%	29%	34%	28%	33%	18%	27%	19%	36%	16%	31%	17%	
27	EAS-DD-0003	5.00	5.85	0.85	13%	13%	23%	34%	34%	34%	1%	33%	35%	29%	24%	28%	27%	22%	23%	21%	24%	15%	17%	22%	
28	EAS-DD-0003	5.85	7.00	1.15	17%	16%	25%	37%	37%	37%	0%	37%	37%	32%	31%	30%	27%	24%	23%	19%	21%	16%	13%	23%	
29	EAS-DD-0003	7.00	8.00	1.00	28%	28%	33%	48%	47%	51%	1%	48%	48%	43%	35%	38%	34%	34%	33%	31%	33%	24%	21%	32%	
30	EAS-DD-0003	8.00	9.00	1.00	30%	30%	32%	41%	41%	47%	0%	41%	41%	34%	35%	37%	31%	32%	30%	28%	22%	23%	17%	32%	
31	EAS-DD-0003	9.00	10.00	1.00	23%	23%	25%	30%	30%	33%	0%	30%	31%	25%	24%	26%	23%	22%	23%	22%	20%	17%	17%	26%	
32	EAS-DD-0003	10.00	11.00	1.00	20%	20%	25%	27%	27%	27%	0%	27%	28%	23%	23%	23%	23%	21%	21%	24%	21%	18%	17%	27%	
33	EAS-DD-0003	11.00	12.35	1.35	18%	18%	22%	24%	23%	26%	0%	23%	24%	20%	19%	22%	21%	19%	18%	19%	19%	13%	15%	23%	
34	EAS-DD-0003	12.35	13.00	0.65	22%	21%	32%	28%	28%	33%	0%	28%	29%	24%	25%	29%	25%	31%	27%	27%	26%	23%	24%	35%	
35	EAS-DD-0004	0.00	1.00	1.00	21%	20%	25%	26%	27%	27%	4%	25%	27%	24%	23%	25%	24%	23%	24%	23%	21%	18%	19%	26%	
36	EAS-DD-0004	1.00	2.00	1.00	7%	7%	9%	9%	9%	10%	0%	9%	9%	8%	7%	8%	8%	8%	8%	8%	7%	6%	6%	10%	
37	EAS-DD-0004	2.00	3.00	1.00	32%	32%	39%	41%	41%	40%	2%	41%	41%	38%	35%	39%	38%	37%	38%	35%	36%	26%	29%	41%	
38	EAS-DD-0004	3.00	4.00	1.00	18%	18%	25%	25%	25%	21%	1%	24%	26%	25%	24%	25%	26%	24%	25%	25%	23%	20%	21%	26%	
39	EAS-DD-0004	4.00	5.00	1.00	14%	13%	24%	18%	19%	16%	2%	17%	19%	19%	19%	22%	21%	22%	24%	23%	24%	21%	21%	27%	
40	EAS-DD-0004	5.00	6.00	1.00	22%	21%	44%	38%	38%	29%	3%	35%	38%	39%	39%	41%	41%	43%	43%	44%	41%	36%	36%	46%	
41	EAS-DD-0004	6.00	7.00	1.00	22%	21%	41%	37%	37%	26%	4%	35%	38%	37%	38%	39%	39%	40%	44%	44%	37%	35%	33%	43%	
42	EAS-DD-0004	7.00	7.90	0.90	37%	36%	56%	52%	52%	43%	8%	48%	53%	50%</											

RECOVERIES %																								
#	HOLE ID	FROM	TO	INTERVAL	TREO_ppm	LREO_ppm	HREO_ppm	NdPr	MREO	La_ppm	Ce_ppm	Pr_ppm	Nd_ppm	Sm_ppm	Eu_ppm	Gd_ppm	Tb_ppm	Dy_ppm	Ho_ppm	Er_ppm	Tm_ppm	Yb_ppm	Lu_ppm	Y_ppm
52	EAS-DD-0006	0.00	1.00	1.00	15%	15%	17%	28%	28%	23%	3%	28%	28%	21%	18%	18%	18%	17%	16%	15%	14%	12%	13%	17%
53	EAS-DD-0006	1.00	2.00	1.00	13%	13%	12%	20%	20%	18%	1%	20%	20%	15%	14%	13%	14%	11%	12%	10%	9%	7%	7%	13%
54	EAS-DD-0006	2.00	3.00	1.00	16%	16%	15%	27%	27%	22%	1%	26%	27%	21%	18%	18%	18%	15%	15%	14%	15%	10%	10%	13%
55	EAS-DD-0006	3.00	4.00	1.00	12%	13%	8%	19%	18%	16%	0%	19%	19%	14%	12%	10%	10%	9%	9%	8%	8%	6%	6%	7%
56	EAS-DD-0006	4.00	5.00	1.00	9%	9%	9%	16%	16%	16%	0%	16%	16%	12%	10%	10%	10%	8%	8%	7%	7%	6%	6%	9%
57	EAS-DD-0006	5.00	6.00	1.00	18%	18%	20%	27%	26%	27%	0%	26%	27%	22%	18%	21%	21%	17%	20%	17%	17%	12%	15%	21%
58	EAS-DD-0006	6.00	7.00	1.00	14%	14%	14%	20%	19%	18%	0%	18%	20%	15%	13%	14%	14%	12%	14%	12%	12%	11%	11%	15%
59	EAS-DD-0006	7.00	8.00	1.00	6%	6%	4%	8%	8%	6%	0%	8%	8%	7%	6%	5%	5%	4%	4%	4%	4%	4%	4%	4%
60	EAS-DD-0006	8.00	9.00	1.00	11%	11%	7%	16%	16%	13%	0%	15%	17%	13%	11%	9%	9%	8%	7%	6%	6%	5%	5%	6%
61	EAS-DD-0006	9.00	10.00	1.00	21%	21%	19%	32%	32%	30%	0%	31%	33%	26%	23%	23%	23%	19%	19%	17%	18%	13%	13%	18%
62	EAS-DD-0006	10.00	11.00	1.00	26%	25%	29%	39%	38%	35%	0%	37%	40%	33%	30%	31%	31%	28%	31%	27%	26%	24%	28%	28%
63	EAS-DD-0006	11.00	12.00	1.00	20%	19%	25%	31%	31%	31%	0%	30%	32%	26%	24%	25%	25%	24%	25%	22%	20%	18%	21%	26%
64	EAS-DD-0006	12.00	13.00	1.00	20%	20%	27%	33%	32%	36%	0%	31%	33%	26%	25%	28%	28%	24%	26%	22%	21%	18%	21%	29%
65	EAS-DD-0006	13.00	14.00	1.00	9%	8%	13%	13%	13%	18%	0%	13%	13%	9%	9%	11%	12%	9%	12%	10%	9%	7%	8%	16%
66	EAS-DD-0006	14.00	15.00	1.00	23%	22%	36%	26%	26%	33%	0%	24%	26%	20%	22%	29%	30%	26%	33%	30%	26%	19%	24%	42%
67	EAS-DD-0006	15.00	16.00	1.00	7%	6%	24%	7%	8%	12%	0%	7%	8%	6%	7%	12%	13%	20%	18%	16%	12%	15%	33%	
68	EAS-DD-0006	16.00	17.00	1.00	1%	0%	3%	1%	1%	1%	0%	0%	1%	0%	0%	1%	2%	1%	1%	2%	2%	8%	7%	5%
69	EAS-DD-0007	0.00	1.00	1.00	16%	16%	13%	20%	20%	27%	1%	20%	21%	14%	13%	14%	14%	11%	12%	10%	11%	8%	7%	14%
70	EAS-DD-0007	1.00	2.00	1.00	25%	25%	24%	38%	37%	36%	0%	36%	38%	27%	24%	27%	23%	19%	19%	16%	16%	10%	10%	26%
71	EAS-DD-0007	2.00	3.00	1.00	20%	21%	17%	26%	25%	30%	0%	24%	27%	18%	17%	19%	16%	14%	15%	13%	11%	8%	9%	18%
72	EAS-DD-0007	3.00	4.00	1.00	36%	36%	32%	45%	45%	57%	0%	41%	47%	36%	34%	38%	33%	28%	27%	22%	22%	15%	13%	33%
73	EAS-DD-0007	4.00	5.00	1.00	23%	22%	26%	28%	28%	37%	0%	25%	29%	21%	21%	25%	23%	20%	21%	18%	16%	10%	10%	30%
74	EAS-DD-0007	5.00	6.44	1.44	34%	32%	50%	43%	43%	50%	0%	39%	45%	34%	36%	45%	42%	38%	43%	38%	34%	24%	25%	57%
77	EAS-DD-0007	9.08	10.00	0.92	2%	2%	9%	5%	5%	4%	0%	4%	5%	5%	5%	7%	7%	6%	7%	6%	5%	15%	13%	11%
78	EAS-DD-0007	10.00	11.50	1.50	2%	1%	7%	3%	3%	2%	0%	2%	4%	3%	3%	5%	8%	4%	4%	4%	4%	19%	15%	8%
79	EAS-DD-0007	11.50	13.00	1.50	1%	1%	3%	2%	2%	1%	0%	1%	3%	1%	1%	2%	8%	2%	2%	2%	4%	19%	17%	3%
80	EAS-DD-0007	13.00	14.00	1.00	1%	1%	4%	2%	2%	1%	0%	1%	3%	1%	1%	2%	9%	2%	2%	3%	4%	20%	16%	4%
81	EAS-DD-0007	14.00	15.00	1.00	1%	1%	3%	3%	3%	1%	0%	0%	3%	0%	1%	1%	11%	1%	2%	1%	5%	24%	17%	2%
82	EAS-DD-0008	0.00	1.00	1.00	3%	3%	5%	8%	8%	4%	2%	3%	10%	4%	4%	4%	22%	2%	4%	2%	5%	21%	16%	4%
83	EAS-DD-0008	1.00	2.00	1.00	3%	3%	4%	15%	13%	4%	2%	4%	18%	3%	3%	3%	23%	2%	3%	1%	5%	22%	15%	2%
84	EAS-DD-0008	2.00	3.00	1.00	2%	2%	4%	14%	13%	3%	1%	4%	18%	4%	3%	3%	19%	2%	3%	2%	4%	20%	15%	3%
85	EAS-DD-0008	3.00	4.00	1.00	3%	3%	3%	11%	10%	4%	2%	5%	13%	4%	4%	3%	20%	1%	3%	1%	4%	21%	14%	1%
86	EAS-DD-0008	4.00	5.25	1.25	5%	5%	4%	15%	13%	6%	3%	13%	15%	12%	11%	7%	17%	3%	3%	3%	4%	18%	14%	2%
87	EAS-DD-0008	5.25	6.00	0.75	5%	5%	6%	14%	13%	5%	4%	12%	15%	11%	10%	10%	22%	5%	4%	3%	5%	21%	15%	3%
88	EAS-DD-0008	6.00	7.00	1.00	8%	8%	6%	19%	18%	7%	5%	16%	20%	18%	12%	11%	17%	5%	5%	4%	4%	20%	12%	4%
89	EAS-DD-0008	7.00	8.00	1.00	4%	4%	4%	14%	12%	6%	2%	12%	14%	10%	7%	7%	14%	3%	3%	2%	4%	19%	16%	2%
90	EAS-DD-0008	8.00	9.00	1.00	6%	6%	5%	16%	14%	7%	4%	14%	16%	11%	10%	8%	13%	4%	4%	3%	4%	17%	13%	3%
91	EAS-DD-0008	9.00	10.37	1.37	6%	6%	6%	13%	13%	6%	4%	11%	14%	11%	10%	9%	17%	5%	5%	4%	4%	21%	15%	4%
92	EAS-DD-0008	10.37	12.00	1.63	12%	13%	9%	22%	21%	11%	11%	19%	22%	16%	16%	14%	19%	10%	7%	6%	5%	22%	17%	6%
93	EAS-DD-0008	12.00	13.00	1.00	23%	23%	22%	39%	38%	27%	12%	36%	40%	33%	31%	33%	29%	21%	21%	16%	14%	18%	13%	19%
94	EAS-DD-0008	13.00	14.00	1.00	28%	28%	29%	41%	41%	37%	11%	39%	42%	35%	33%	34%	34%	31%	31%	26%	23%	19%	22%	28%
95	EAS-DD-0008	14.00	15.00	1.00	28%	27%	36%	42%	42%	39%	5%	39%	44%	38%	33%	39%	38%	35%	35%	32%	35%	24%	26%	36%
96	EAS-DD-0008	15.00	16.00	1.00	6%	6%	9%	14%	14%	16%	1%	13%	15%	11%	10%	11%	9%	7%	8%	7%	7%	6%	6%	10%
97	EAS-DD-0008	16.00	17.00	1.00	6%	6%	17%	19%	19%	22%	0%	17%	19%	15%	14%	17%	15%	14%	15%	13%	14%	11%	13%	20%
98	EAS-DD-0008	17.00	18.00	1.00	10%	9%	18%	15%	15%	15%	1%	13%	15%	13%	13%	16%	17%	16%	19%	17%	18%	16%	16%	20%
99	EAS-DD-0008	18.00	19.00	1.00	13%	13%	14%	18%	18%	14%	1%	17%	18%	16%	15%	15%	17%	15%	16%	15%	16%	14%	16%	14%
100	EAS-DD-0008	19.00	20.00	1.00	12%	12%	11%	16%	16%	13%	1%	15%	16%	14%	13%	13%	13%	12%	12%	11%	11%	11%	11%	10%

For personal use only

RECOVERIES %																								
#	HOLE ID	FROM	TO	INTERVAL	TREO ppm	LREO ppm	HREO ppm	NdPr	MREO	La ppm	Ce ppm	Pr ppm	Nd ppm	Sm ppm	Eu ppm	Gd ppm	Tb ppm	Dy ppm	Ho ppm	Er ppm	Tm ppm	Yb ppm	Lu ppm	Y ppm
101	EAS-DD-0009	0.00	1.00	1.00	3%	3%	5%	9%	8%	4%	2%	6%	10%	6%	16%	5%	25%	4%	13%	5%	24%	17%	16%	2%
102	EAS-DD-0009	1.00	2.00	1.00	2%	1%	3%	10%	9%	6%	1%	6%	11%	4%	3%	2%	15%	1%	3%	1%	4%	21%	14%	1%
103	EAS-DD-0009	2.00	3.00	1.00	2%	2%	3%	10%	9%	8%	1%	6%	11%	2%	3%	1%	17%	1%	3%	1%	5%	22%	17%	1%
104	EAS-DD-0009	3.00	4.00	1.00	1%	1%	3%	10%	9%	7%	1%	6%	12%	4%	5%	3%	16%	1%	3%	2%	10%	22%	15%	1%
105	EAS-DD-0009	4.00	5.00	1.00	3%	3%	3%	9%	8%	7%	2%	7%	10%	4%	4%	4%	15%	1%	3%	1%	4%	22%	17%	1%
106	EAS-DD-0009	5.00	6.57	1.57	7%	6%	12%	18%	18%	15%	2%	17%	18%	15%	12%	16%	12%	12%	10%	11%	15%	11%	11%	
107	EAS-DD-0009	6.57	8.00	1.43	26%	26%	26%	35%	35%	44%	5%	34%	36%	32%	31%	31%	30%	26%	24%	21%	20%	15%	14%	25%
108	EAS-DD-0009	8.00	9.00	1.00	26%	26%	25%	31%	31%	30%	14%	30%	32%	27%	25%	29%	25%	24%	21%	20%	18%	15%	13%	26%
109	EAS-DD-0009	9.00	10.00	1.00	27%	27%	29%	31%	31%	36%	7%	29%	31%	28%	26%	30%	28%	29%	30%	27%	28%	25%	22%	30%
110	EAS-DD-0009	10.00	11.00	1.00	15%	15%	14%	17%	17%	22%	1%	16%	17%	15%	14%	14%	14%	13%	12%	12%	11%	10%	9%	14%
111	EAS-DD-0009	11.00	12.00	1.00	9%	9%	10%	13%	12%	12%	0%	12%	13%	11%	11%	11%	10%	9%	10%	9%	9%	7%	6%	10%
112	EAS-DD-0010	0.00	1.00	1.00	17%	17%	18%	32%	31%	39%	4%	33%	31%	21%	18%	21%	17%	15%	13%	11%	10%	13%	11%	19%
113	EAS-DD-0010	1.00	2.00	1.00	35%	35%	43%	59%	58%	64%	3%	59%	59%	46%	43%	43%	35%	38%	31%	29%	20%	25%	45%	
114	EAS-DD-0010	2.00	3.00	1.00	31%	31%	27%	42%	41%	47%	2%	42%	42%	31%	28%	30%	27%	22%	23%	17%	17%	12%	28%	
115	EAS-DD-0010	3.00	4.00	1.00	24%	24%	26%	36%	36%	37%	2%	37%	36%	27%	26%	28%	26%	21%	23%	18%	19%	15%	27%	
116	EAS-DD-0010	4.00	5.00	1.00	28%	28%	29%	38%	37%	37%	2%	38%	38%	30%	30%	32%	30%	26%	26%	23%	21%	17%	30%	
117	EAS-DD-0010	5.00	6.00	1.00	12%	12%	14%	20%	19%	18%	1%	19%	20%	16%	15%	16%	15%	13%	14%	11%	12%	9%	9%	14%
118	EAS-DD-0010	6.00	7.00	1.00	23%	23%	25%	36%	35%	34%	2%	34%	36%	30%	28%	30%	28%	24%	23%	21%	20%	14%	14%	25%
119	EAS-DD-0010	7.00	7.87	0.87	26%	25%	28%	39%	38%	37%	5%	38%	39%	34%	31%	34%	33%	27%	28%	23%	20%	19%	17%	28%
120	EAS-DD-0011	0.00	1.00	1.00	10%	10%	10%	24%	23%	25%	5%	25%	23%	16%	19%	15%	17%	8%	13%	7%	17%	15%	16%	7%
121	EAS-DD-0011	1.00	2.00	1.00	12%	12%	16%	36%	35%	32%	2%	36%	35%	28%	26%	24%	20%	15%	15%	11%	12%	15%	10%	14%
122	EAS-DD-0011	2.00	3.00	1.00	17%	17%	20%	39%	38%	34%	3%	39%	39%	31%	28%	27%	23%	19%	18%	15%	15%	14%	15%	18%
123	EAS-DD-0011	3.00	4.00	1.00	27%	27%	23%	43%	42%	58%	4%	43%	43%	37%	34%	31%	29%	22%	22%	17%	17%	13%	15%	21%
124	EAS-DD-0011	4.00	5.00	1.00	33%	34%	25%	47%	46%	75%	2%	47%	47%	39%	38%	34%	32%	25%	23%	19%	19%	14%	17%	23%
125	EAS-DD-0011	5.00	6.00	1.00	31%	31%	29%	44%	44%	51%	3%	44%	45%	38%	38%	35%	36%	29%	28%	24%	28%	19%	29%	27%
126	EAS-DD-0011	6.00	7.00	1.00	33%	33%	37%	51%	50%	43%	5%	51%	51%	46%	45%	41%	42%	37%	37%	34%	30%	28%	26%	36%
127	EAS-DD-0011	7.00	8.00	1.00	22%	22%	26%	32%	32%	29%	4%	31%	32%	30%	30%	30%	29%	26%	25%	25%	21%	18%	19%	26%
128	EAS-DD-0011	8.00	9.00	1.00	39%	39%	42%	48%	48%	57%	8%	48%	49%	47%	45%	46%	44%	42%	38%	37%	36%	32%	29%	42%
129	EAS-DD-0011	9.00	10.00	1.00	39%	39%	39%	42%	42%	56%	10%	41%	42%	40%	39%	41%	40%	37%	39%	36%	32%	29%	32%	39%
130	EAS-DD-0011	10.00	11.00	1.00	32%	33%	30%	37%	37%	40%	14%	37%	37%	36%	34%	34%	32%	29%	28%	26%	28%	23%	26%	29%
131	EAS-DD-0011	11.00	12.00	1.00	24%	24%	24%	30%	30%	26%	15%	30%	31%	28%	28%	27%	27%	25%	25%	22%	22%	20%	17%	24%
132	EAS-DD-0011	12.00	13.00	1.00	30%	30%	28%	32%	32%	39%	14%	31%	32%	30%	30%	30%	30%	27%	26%	24%	26%	22%	24%	27%
133	EAS-DD-0011	13.00	14.62	1.62	30%	29%	35%	37%	36%	29%	22%	35%	37%	36%	37%	39%	36%	33%	36%	31%	31%	26%	29%	35%
134	EAS-DD-0011	14.62	15.20	0.58	8%	7%	11%	11%	11%	8%	1%	10%	11%	9%	9%	9%	9%	12%	8%	14%	9%	11%	13%	
135	EAS-DD-0012	0.00	1.00	1.00	6%	7%	3%	7%	6%	5%	7%	4%	7%	3%	6%	3%	11%	2%	5%	2%	9%	19%	13%	1%
136	EAS-DD-0012	1.00	2.00	1.00	2%	2%	3%	7%	7%	6%	1%	3%	9%	2%	3%	2%	16%	1%	3%	1%	6%	27%	18%	1%
137	EAS-DD-0012	2.00	3.00	1.00	6%	6%	4%	14%	13%	13%	5%	13%	14%	7%	8%	5%	18%	3%	2%	5%	25%	16%	2%	
138	EAS-DD-0012	3.00	4.00	1.00	3%	3%	4%	11%	11%	10%	2%	6%	13%	3%	4%	3%	19%	1%	3%	2%	6%	27%	17%	2%
139	EAS-DD-0012	4.00	5.00	1.00	4%	4%	3%	12%	11%	16%	2%	13%	12%	7%	6%	4%	17%	2%	3%	5%	22%	15%	1%	
140	EAS-DD-0012	5.00	6.00	1.00	7%	7%	7%	11%	11%	15%	5%	11%	11%	9%	6%	7%	10%	6%	6%	5%	4%	21%	17%	6%
141	EAS-DD-0012	6.00	7.00	1.00	6%	6%	6%	11%	11%	13%	2%	11%	11%	8%	8%	7%	8%	5%	4%	4%	3%	15%	12%	4%
142	EAS-DD-0012	7.00	8.00	1.00	13%	13%	14%	26%	25%	26%	3%	25%	26%	20%	20%	19%	15%	13%	12%	9%	8%	15%	13%	14%
143	EAS-DD-0012	8.00	9.00	1.00	23%	23%	28%	40%	39%	39%	9%	37%	41%	34%	36%	33%	29%	28%	24%	22%	21%	17%	13%	27%
144	EAS-DD-0012	9.00	9.91	0.91	15%	15%	19%	26%	25%	25%	4%	24%	26%	22%	20%	22%	18%	17%	17%	14%	14%	10%	20%	
145	EAS-DD-0012	9.91	11.00	1.09	46%	44%	58%	57%	57%	58%	2%	52%	59%	50%	56%	57%	55%	52%	57%	55%	51%	43%	40%	62%
146	EAS-DD-0012	11.00	12.00	1.00	28%	27%	40%	39%	39%	39%	1%	37%	40%	35%	39%	39%	34%	33%	35%	35%	29%	31%	27%	43%
147	EAS-DD-0012	12.00	13.00	1.00	18%	17%	32%	28%	28%	27%	0%	25%	29%	27%	31%	31%	27%	27%	28%	26%	24%	20%	19%	34%
148	EAS-DD-0012	13.00	14.00	1.00	16%	15%	25%	22%	22%	25%	0%	21%	23%	20%	22%	23%	18%	19%	21%	21%	17%	18%	28%	
149	EAS-DD-0012	14.00	15.00	1.00	10%	9%	21%	15%	15%	16%	0%	14%	15%	14%	19%	18%	16%	15%	16%	17%	13%	13%	24%	
150	EAS-DD-0012	15.00	16.00	1.00	6%	5%	13%	8%	8%	9%	0%	7%	9%	7%	10%	10%	8%	8%	9%	10%	7%	14%	11%	16%
151	EAS-DD-0012	16.00	17.00	1.00	7%	6%	17%	10%	10%	10%	0%	9%	10%	9%	12%	14%	11%	11%	13%	11%	9%	13%	10%	20%
152	EAS-DD-0012	17.00	18.00	1.00	2%	1%	7%	3%	3%	3%	0%	2%	3%	3%	4%	5%	4%	5%	4%	5%	3%	11%	8%	8%
153	EAS-DD-0012	18.00	19.00	1.00	3%	2%	8%	4%	4%	4%	0%	3%	4%	3%	4%	6%	4%	5%	6%	6%	3%	15%	11%	10%
154	EAS-DD-0012	19.00	20.00	1.00	1%	1%	4%	2%	2%	2%	0%	1%	2%	1%	2%	3%	4%	2%	2%	3%	3%	14%	13%	5%

RECOVERIES %																								
#	HOLE ID	FROM	TO	INTERVAL	TREO ppm	LREO ppm	HREO ppm	NdPr	MREO	La ppm	Ce ppm	Pr ppm	Nd ppm	Sm ppm	Eu ppm	Gd ppm	Tb ppm	Dy ppm	Ho ppm	Er ppm	Tm ppm	Yb ppm	Lu ppm	Y ppm
155	EAS-DD-0013	0.00	1.00	1.00	5%	5%	5%	19%	17%	3%	3%	4%	24%	2%	5%	2%	22%	1%	4%	2%	6%	29%	20%	3%
156	EAS-DD-0013	1.00	2.00	1.00	3%	3%	3%	18%	15%	3%	1%	3%	23%	2%	4%	1%	21%	1%	4%	1%	5%	25%	19%	1%
157	EAS-DD-0013	2.00	3.00	1.00	3%	3%	5%	18%	15%	3%	0%	3%	23%	4%	4%	4%	22%	3%	3%	3%	5%	27%	18%	3%
158	EAS-DD-0013	3.00	4.00	1.00	2%	2%	3%	15%	13%	2%	0%	1%	20%	2%	3%	1%	20%	1%	3%	1%	5%	24%	18%	1%
159	EAS-DD-0013	4.00	5.00	1.00	2%	2%	3%	17%	15%	3%	0%	2%	22%	2%	4%	1%	19%	1%	3%	1%	6%	25%	21%	1%
160	EAS-DD-0013	5.00	6.00	1.00	2%	2%	3%	14%	13%	3%	0%	1%	19%	2%	4%	1%	20%	1%	3%	1%	6%	24%	19%	1%
161	EAS-DD-0013	6.00	7.00	1.00	2%	2%	3%	16%	13%	2%	0%	2%	20%	2%	3%	1%	17%	1%	3%	1%	5%	25%	17%	1%
162	EAS-DD-0013	7.00	8.00	1.00	2%	2%	3%	16%	14%	2%	1%	2%	20%	2%	4%	1%	21%	1%	3%	1%	6%	27%	17%	1%
163	EAS-DD-0013	8.00	9.00	1.00	2%	2%	4%	17%	15%	3%	1%	4%	22%	3%	4%	1%	25%	1%	3%	2%	6%	33%	22%	2%
164	EAS-DD-0013	9.00	10.00	1.00	2%	2%	3%	9%	8%	2%	1%	3%	11%	3%	3%	3%	17%	1%	3%	1%	6%	24%	22%	1%

Appendix D: References:






1. SGB (Geological Survey of Brazil) Reference
https://rigeo.sgb.gov.br/jspui/bitstream/doc/8650/35/Mapa_Curral%20De%20Dentro.pdflo
2. SGB (Geological Survey of Brazil) Reference
https://rigeo.sgb.gov.br/bitstream/doc/8650/3/Relatório_Candido_Sales.pdf
3. Hyperspectral study report by Dr. Neil Pendock
4. ASX announcements
 - a. 4 June 2025: Discovery of High-Grade Rare Earth Targets
 - b. 2 July 2025: Enova Advances Phase 2 Sampling at East Salinas
 - c. 6 Aug 2025: Enova prepares to test high-grade REE drill targets at East Salinas
 - d. 1 Dec 2025: Diamond drilling commences on high grade REE target
 - e. 20 Jan 2026: Diamond drilling advances at East Salinas high-grade rare earth project, Brazil
 - f. 10 Feb 2025: Discovery of surface ionic adsorption REE mineralisation at East Salinas
 - g. 9 April 2026: High-Grade REE Intercepts Confirm IAC Mineralisation at East Salinas Brazil

The Company confirms that it is not aware of any new information or data that materially affects the information included in the original market announcement.

Abbreviations & Legend

CREO = Critical Rare Earth Element Oxide	NdPr% = Percentage amount of neodymium and praseodymium oxides as a proportion of the total amount of rare earth oxide (TREO)
HREO = Heavy Rare Earth Element Oxide Table	DyTb = Dysprosium-Terbium
IAC = Ionic Adsorption Clay	wt% = Weight percent
LREO = Light Rare Earth Element Oxide	CN= Chondrite Normalised
REE = Rare Earth Element	SAP= Saprolite
REO = Rare Earth Element Oxide	SRK= Saprock
TREO = Total Rare Earth Element Oxides including Yttrium Oxide	FRK= Fresh Rock
AMSUL=Ammonium Sulphate	
HREE (+Y) = Heavy Rare Earth Elements (+Yttrium)	

Colour legend

Colour	TREO including Y ₂ O ₃
	≥3,000 ppm
	≥2000 ppm
	≥1000 ppm
	<1000 ppm
0% --- 60%	Recovery %
	Graded Colour Scale