

ASX RELEASE | 25 May 2026

Drilling Commences at High-Grade Rocky Ridge Prospect

Highlights

- Drilling commences at Rocky Ridge, targeting extensions below historic high-grade underground workings where channel sampling returned up to 8m at 28.5g/t Au, including bonanza-grade intervals up to ~0.4m at 101g/t Au.
- The drilling program is specifically designed to test the north-dipping high-grade shear zone missed by previous northwest-oriented drilling.
- In addition to Rocky Ridge, multiple shallow gold prospects are scheduled to be tested as part of the 5,000m RC program, first assays expected from six weeks onwards.
- First assays from the 2026 soil program have defined multiple new gold targets, including a 1.5km, +32ppb gold trend located just 400m away from historic open pit mines.
- The peak results from the soil sampling program includes 1.75g/t Au, 1.70g/t Au, 1.21g/t Au, and 1.07g/t Au.

Moho Resources Ltd (ASX: MOH) has commenced drilling at the high-grade Rocky Ridge Prospect, initially targeting extensions below historic underground workings that returned intercepts including 8m at 28.5g/t Au.

The 5,000m RC program will test a 200m strike extent and 100m down dip of the mineralised shear zone, alongside multiple nearby gold prospects with demonstrated surface mineralisation. Concurrently, first results from the 2026 soil sampling program have identified multiple new gold targets, including a 1.5km-long gold trend near historic open pit mines, with peak soil results up to 1.75g/t Au.

Moho Resources Chairman, Mr Peter Christie said:

“Rocky Ridge remains largely untested below the historic workings despite exceptional historic mine grades and bonanza-grade mineralisation underground. With drilling now underway and multiple new gold anomalies emerging from soils, we believe Bush Chook is entering a strong period of discovery-focused news flow throughout 2026 and beyond.”

Drilling Commences at the Rocky Ridge Prospect

Moho Resources has commenced RC drilling at the high-grade Rocky Ridge Prospect which will test along strike and down-dip of a high-grade shear zone exposed in a historic underground adit “Southwest Adit 1”. This high-grade shear zone is open at depth (below 40m) and along strike.

For personal use only

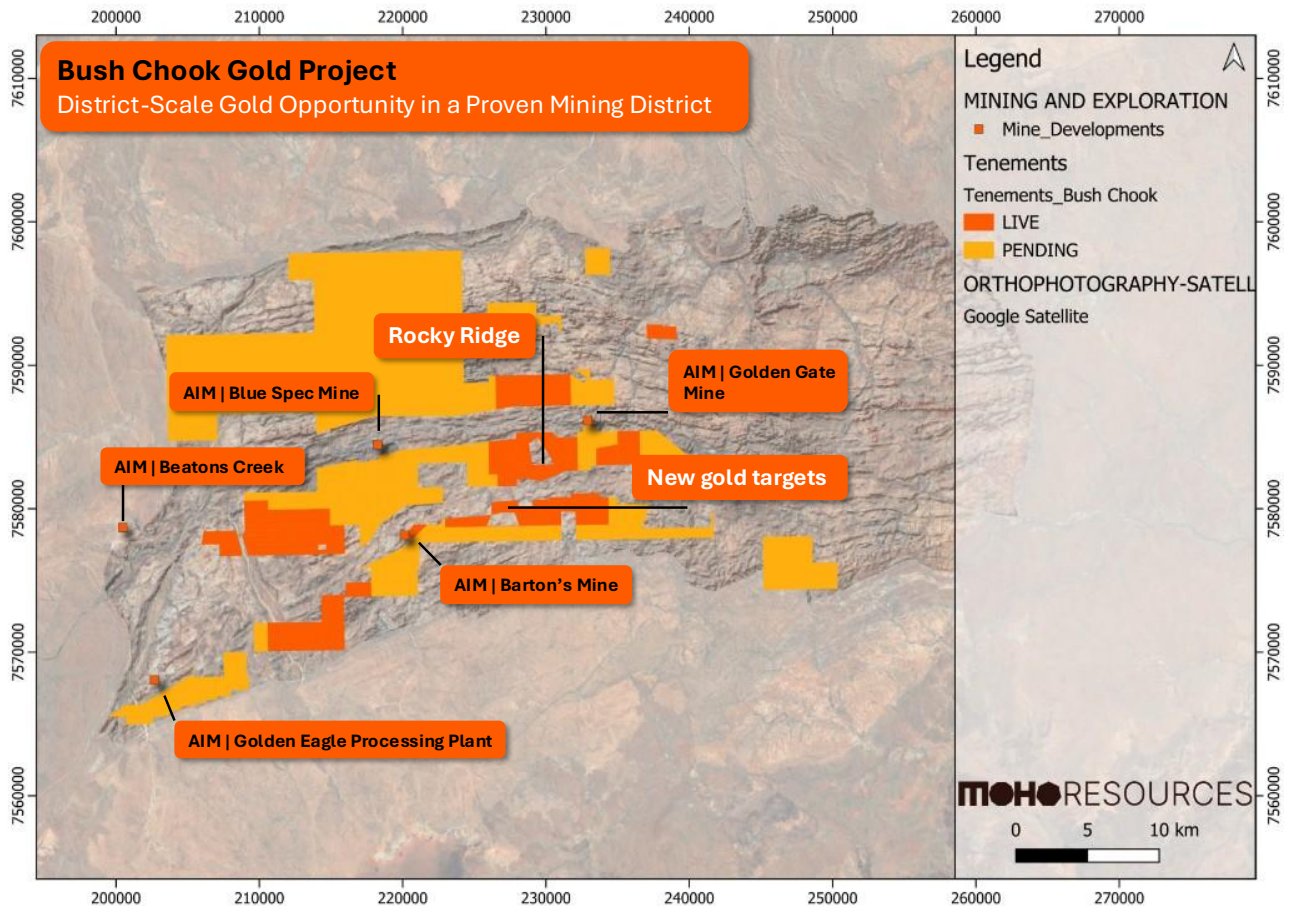


Figure 1: Bush Chook Project a district scale gold opportunity in a proven mining district.

The RC drilling will be oriented towards the southeast, a 180 degree turn from the historic exploration drilling. This new orientation is optimised to test the north-dipping high-grade shear zone exposed in Southwest Adit 1.

Rocky Ridge will be the first prospect to be drilled in a larger 5,000m RC program which will test shallow, high-grade gold mineralisation at multiple prospects.

Rocky Ridge | high-grade gold mine, untested below 40m

The Rocky Ridge Prospect (historically known as the Mountain Maid Mine) has received only sporadic mining and exploration work. First mined underground between 1906 and 1917 it produced 341 tonnes of ore from four separate Southeast-dipping Gold Reefs at an **average grade of 85g/t** (Northwest Adit 1 / Main Workings)¹. Mining continued over a strike length of approximately 120m and to a maximum depth of 40m.

In 1987, two new exploration drives were established. Northwest Adit 2 was driven in 38m parallel to Northwest Adit 1. The best channel samples from the drive face were **1m at 3.05g/t Au from 4m, 1m at 4g/t from 6m and 2m at 0.8g/t from 8m**. This drive demonstrates the south-east-dipping gold reefs remain open down dip.

¹ DMPE WAMEX Areport number 25861

Southwest Adit 1 was driven in 79m from the northeast and intercepted a new north-dipping high-grade gold-antimony shear zone – **8m at 28.5g/t Au from 52m including 0.3m at 65g/t, ~0.4m at 50g/t, ~0.4m at 101g/t, and 0.5m at 56.4g/t and 1.3m at 0.42% antimony from 72m.**

The first exploration drilling program was executed in 2004 when 12 rotary air blast (RAB) holes targeted the south-west extension of the south-east-dipping gold reefs (main workings). The maximum drill depth was 40m with a significant intercept of **8m at 2.52g/t from 32m to EOH.**

A second drill program in 2017 comprised 13 RC holes, to a maximum depth of 54m, also targeted the south-east-dipping gold reefs by drilling towards the north-west, however, two holes intercepted the up-dip extension of the north-dipping high-grade gold-antimony shear zone intercepted in south-west Adit 1 with a best intercept of **8m at 3.67g/t Au from 20m** - including a 2m void from 18m due to previous mining activities which potentially mined out a higher grade portion of the shear zone.

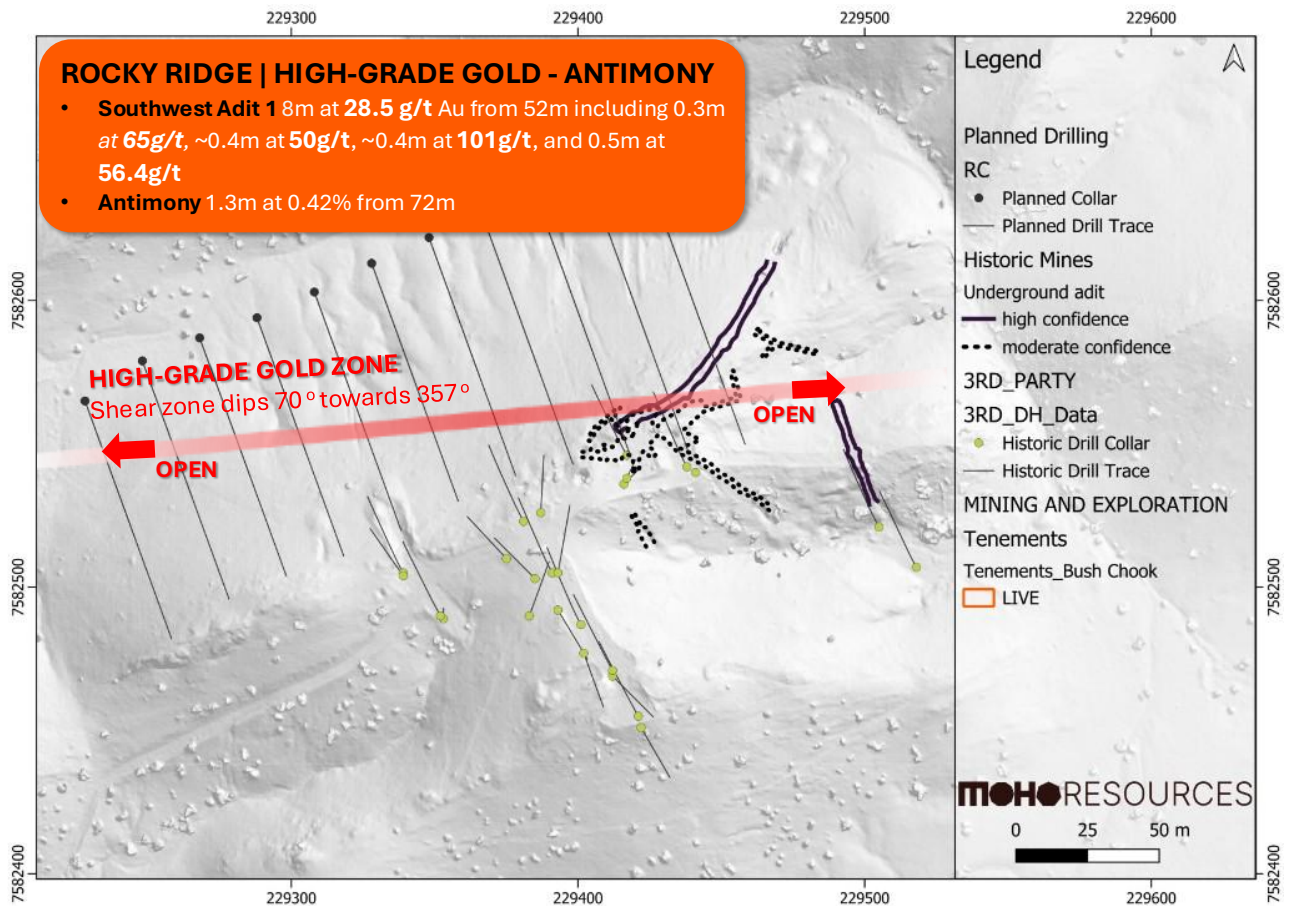


Figure 2: Planned RC drilling at the Rocky Ridge Prospect drilling to the southeast, the optimal orientation to test the north-dipping high-grade shear zone. Previous explorers drilled towards the northwest.

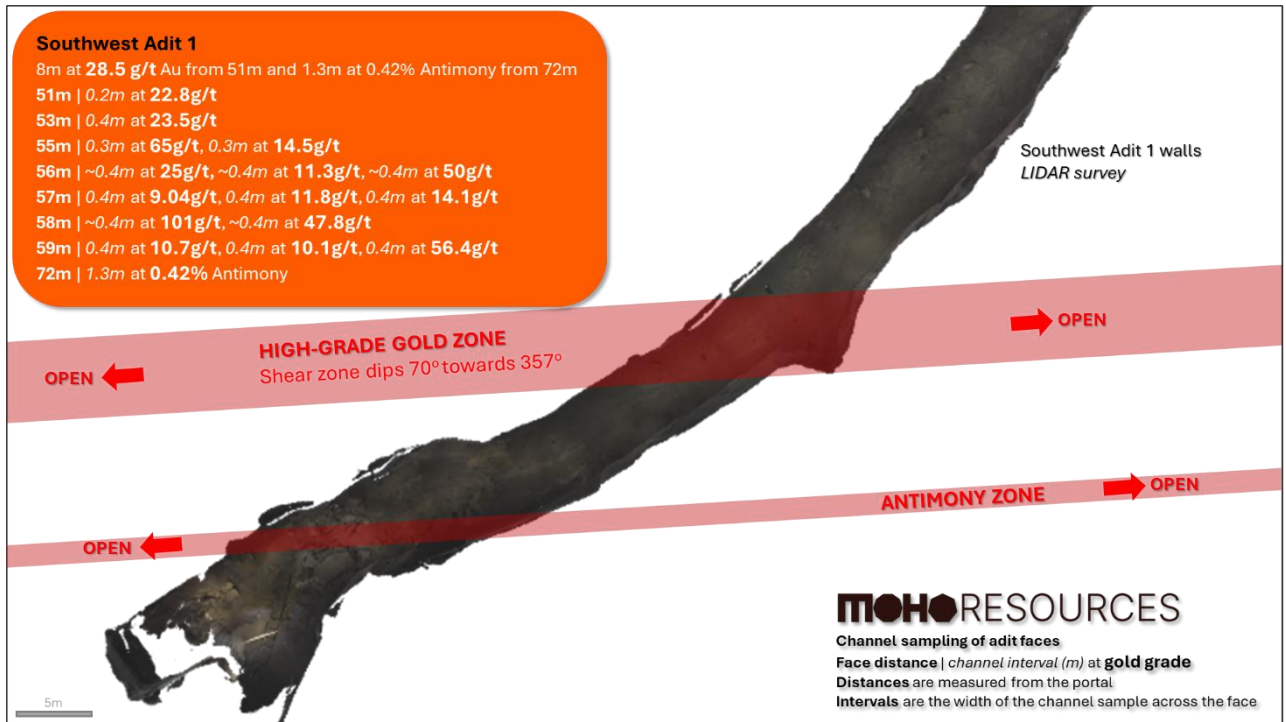


Figure 3: Southwest Adit 1 – historic channel sampling results

Underground mapping by Moho Resources demonstrates that the north-dipping high-grade gold-antimony shear zone dips between 65-80° towards 357°, it has a true thickness of ~2m and is open down dip and along strike. Unlike previous explorers, Moho will execute an RC drilling program to test the North-dipping shear zone across ~200m of strike length and up to 100m down dip.

This narrow, high-grade gold-antimony mineralisation shows several similarities, in terms of geometry, grade, and Au-Sb association, to AIM Mining Blue Spec Gold Project (243Kt at 24.4g/t Au and 1.6% Sb for 190Koz).

Multiple Prospects to be tested in 5,000m RC program

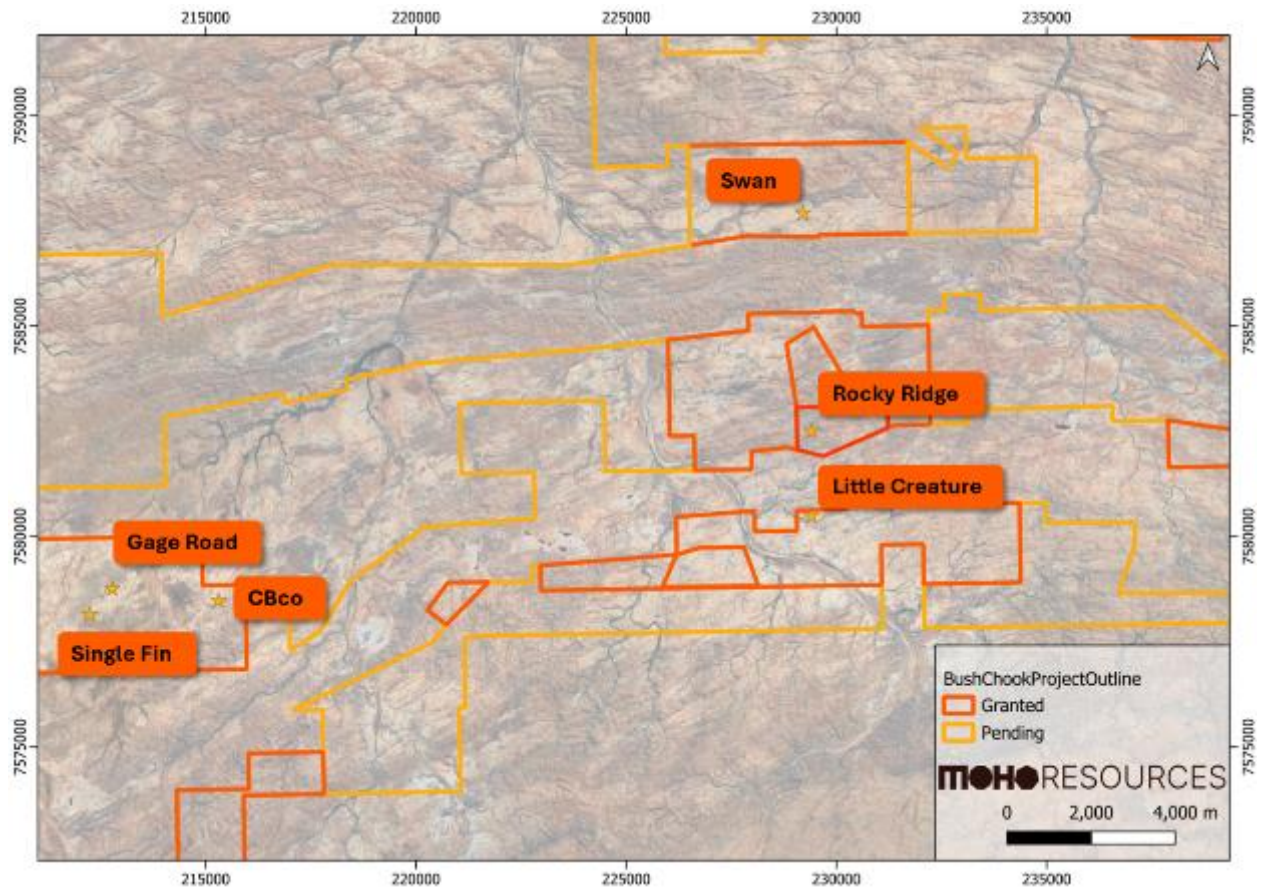


Figure 4: Targets for upcoming drill program.

Gage Road

Gold mineralisation demonstrated over 115m in two trenches.

- MCTR005: 9m at 1.85g/t Au including 2m at 5.45g/t Au and 1m at 1.06g/t.
- MCTR006: 9m at 0.94g/t Au including 1.2m at 3.58g/t Au.
- Rock chips up to 2.76g/t Au

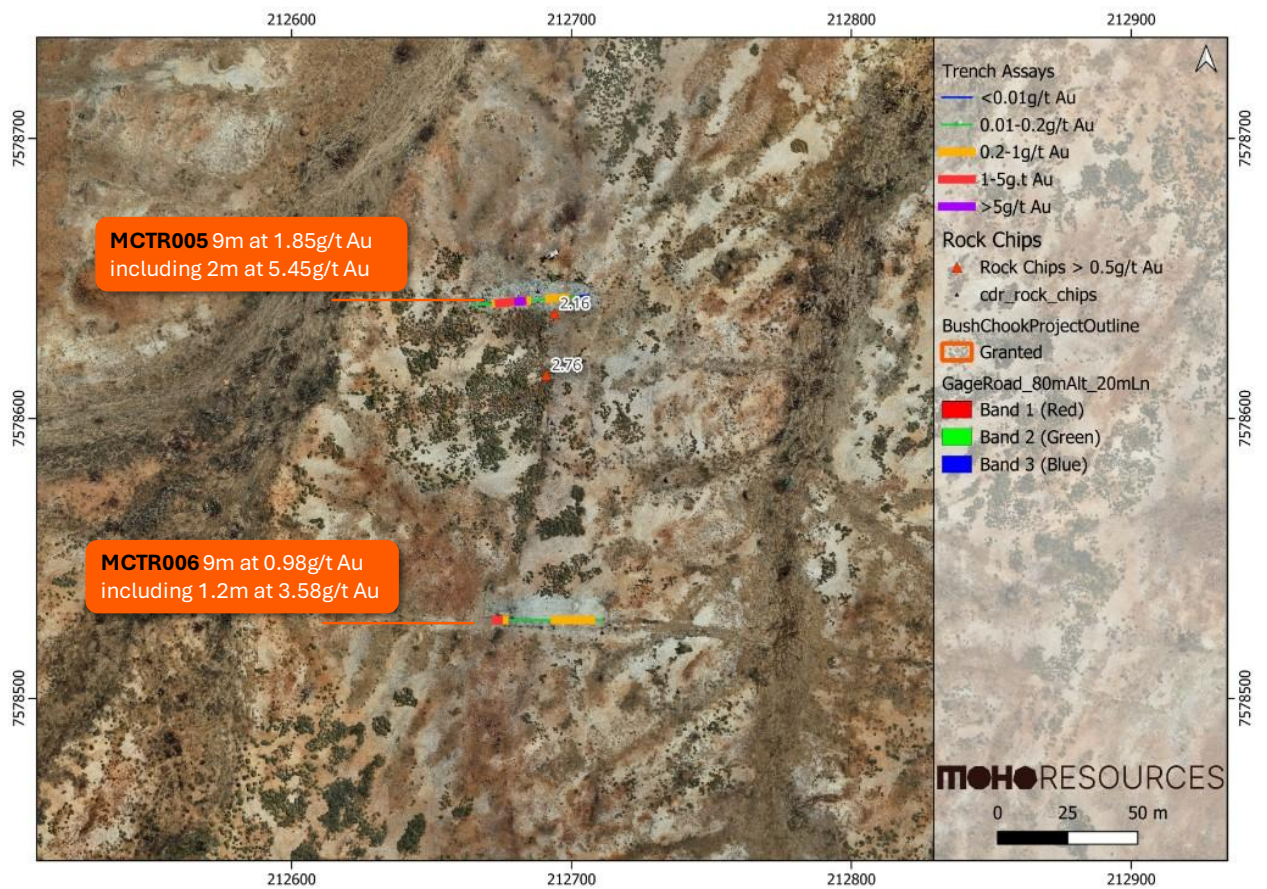


Figure 5: Gage Road Prospect.

CBco

Gold mineralisation demonstrated over 450m in trenching and rock chip sampling.

- MCTR003: 8m at 0.72g/t Au including 4m at 1.29g/t Au.
- MCTR004: 11m at 0.63g/t Au including 1m at 1.03g/t Au
- Rock chips up to 5.1g/t Au

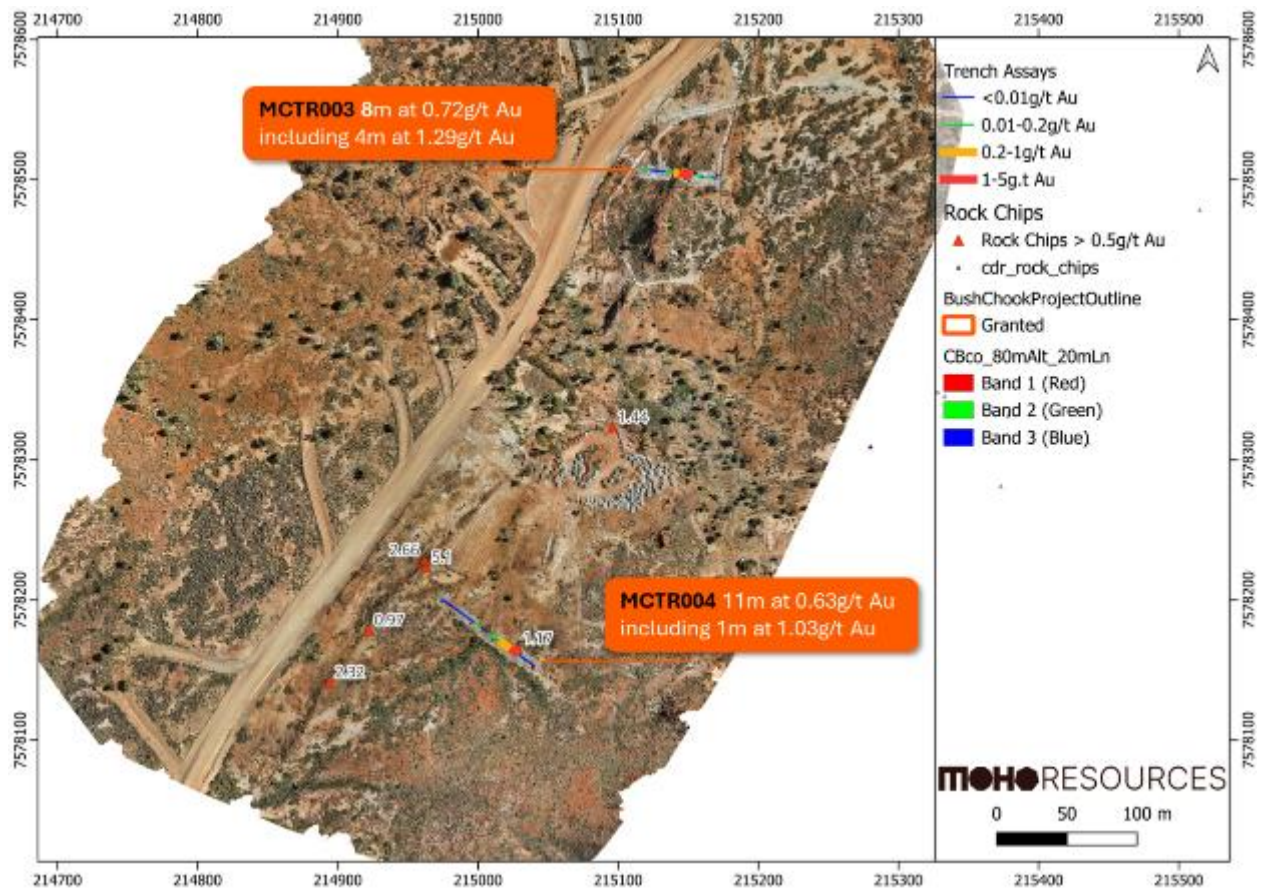


Figure 6: CBco Prospect.

For personal use only

Single Fin

Gold mineralisation demonstrated over 150m in trenching and rock chip sampling.

- MCTR007 3m at 0.67 g/t Au including 1m at 1.11g/t Au
- Rock chips up to 1.03g/t Au.

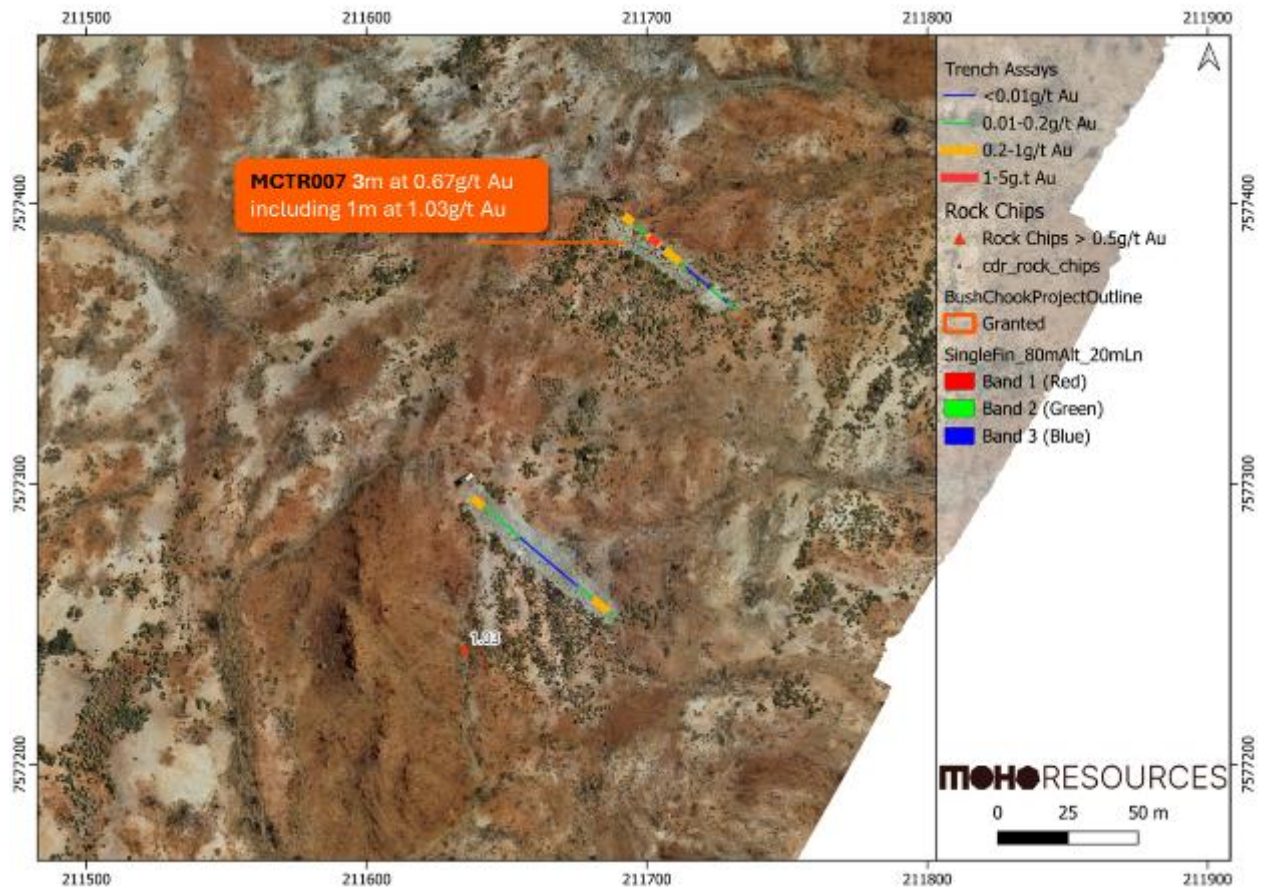


Figure 7: Single Fin Prospect.

Little Creature

Gold mineralisation demonstrated over 650m in rock chip and soil sampling

- Rock chips up to 5.6g/t Au
- Soils up to 252ppb Au

Swan

Testing the southern soil anomaly to complete the December 2025 drilling program.

Early Soil Results Deliver New Gold Targets

First results from the 2026 soil sampling campaign have delivered exceptional results. Multiple anomalous trends have been identified including a standout 1.5km +32ppb Au gold trend located 400m east of historical open pit mines. Within this trend four soil samples assayed over 1g/t Au, up to 1.75g/t Au. The next steps are geological mapping and rock chip sampling to get the target to a “drill-ready” status.

The phase 1 soil program (on granted licences) consists of 4,690 samples, 75% of these samples have already been collected. Assays for the first 1,034 samples have been received with further results expected in the coming weeks.

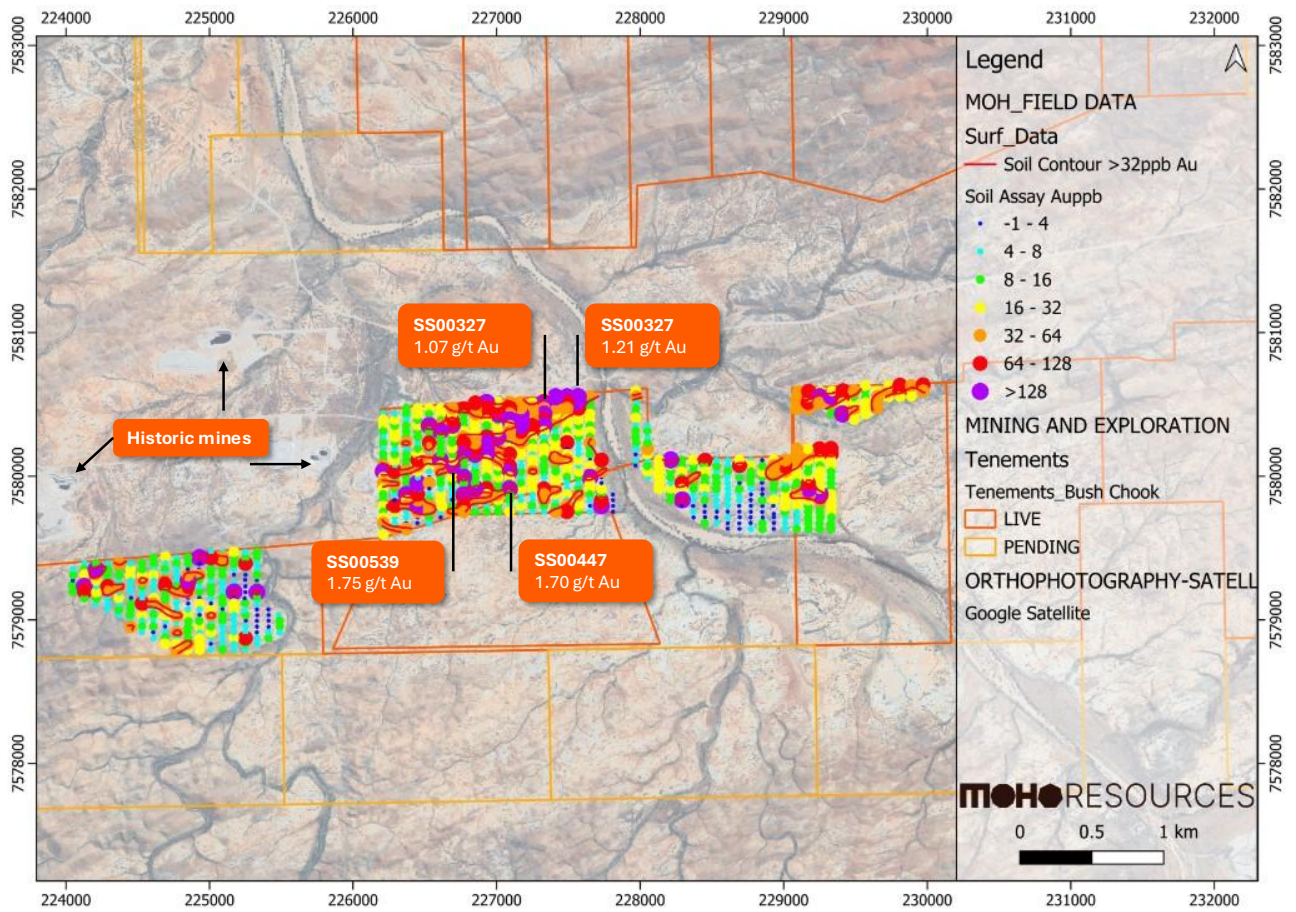


Figure 8: Multiple +32ppb Au trend identified in first batch of soil assays.

For personal use only

Table 1: Soil Sample Results

Sample Id	Easting	Northing	Grid_Id	Au ppb Aqua Regia
SS00001	229102	7580590	GDA2020 MGAz51	45
SS00002	229092	7580553	GDA2020 MGAz51	40
SS00003	229090	7580512	GDA2020 MGAz51	41
SS00004	229088	7580471	GDA2020 MGAz51	47
SS00005	229173	7580473	GDA2020 MGAz51	45
SS00006	229170	7580515	GDA2020 MGAz51	71
SS00007	229170	7580554	GDA2020 MGAz51	29
SS00008	229173	7580593	GDA2020 MGAz51	82
SS00009	229254	7580594	GDA2020 MGAz51	25
SS00010	229251	7580554	GDA2020 MGAz51	134
SS00011	229247	7580510	GDA2020 MGAz51	42
SS00012	229329	7580434	GDA2020 MGAz51	13
SS00013	229331	7580474	GDA2020 MGAz51	10
SS00014	229331	7580514	GDA2020 MGAz51	47
SS00015	229331	7580557	GDA2020 MGAz51	138
SS00016	229336	7580595	GDA2020 MGAz51	26
SS00017	229413	7580596	GDA2020 MGAz51	75
SS00018	229409	7580553	GDA2020 MGAz51	90
SS00019	229411	7580514	GDA2020 MGAz51	22
SS00020	229411	7580478	GDA2020 MGAz51	19
SS00021	229410	7580435	GDA2020 MGAz51	312
SS00022	229491	7580394	GDA2020 MGAz51	22
SS00023	229490	7580432	GDA2020 MGAz51	29
SS00024	229491	7580474	GDA2020 MGAz51	45
SS00025	229489	7580511	GDA2020 MGAz51	31
SS00026	229488	7580554	GDA2020 MGAz51	14
SS00027	229491	7580595	GDA2020 MGAz51	34
SS00028	229567	7580593	GDA2020 MGAz51	15
SS00029	229569	7580550	GDA2020 MGAz51	16
SS00030	229573	7580515	GDA2020 MGAz51	23
SS00031	229570	7580472	GDA2020 MGAz51	21
SS00032	229573	7580434	GDA2020 MGAz51	20
SS00033	229568	7580632	GDA2020 MGAz51	26
SS00035	229650	7580593	GDA2020 MGAz51	29
SS00037	229653	7580557	GDA2020 MGAz51	45
SS00038	229649	7580514	GDA2020 MGAz51	40
SS00039	229650	7580476	GDA2020 MGAz51	54
SS00040	229731	7580553	GDA2020 MGAz51	23
SS00041	229729	7580595	GDA2020 MGAz51	43
SS00042	229733	7580635	GDA2020 MGAz51	29
SS00043	229810	7580635	GDA2020 MGAz51	119
SS00044	229809	7580595	GDA2020 MGAz51	72

For personal use only

For personal use only

SS00045	229811	7580554	GDA2020 MGAz51	23
SS00046	229889	7580557	GDA2020 MGAz51	17
SS00047	229890	7580597	GDA2020 MGAz51	24
SS00048	229889	7580633	GDA2020 MGAz51	40
SS00049	229970	7580636	GDA2020 MGAz51	124
SS00050	229971	7580595	GDA2020 MGAz51	51
SS00051	229329	7580195	GDA2020 MGAz51	80
SS00052	229330	7580156	GDA2020 MGAz51	74
SS00053	229327	7580114	GDA2020 MGAz51	23
SS00054	229331	7580075	GDA2020 MGAz51	28
SS00055	229330	7580032	GDA2020 MGAz51	15
SS00056	229329	7579993	GDA2020 MGAz51	12
SS00057	229329	7579954	GDA2020 MGAz51	15
SS00058	229329	7579914	GDA2020 MGAz51	16
SS00059	229328	7579875	GDA2020 MGAz51	24
SS00060	229330	7579834	GDA2020 MGAz51	23
SS00061	229331	7579795	GDA2020 MGAz51	23
SS00062	229330	7579755	GDA2020 MGAz51	18
SS00063	229333	7579714	GDA2020 MGAz51	14
SS00064	229326	7579669	GDA2020 MGAz51	11
SS00065	229329	7579632	GDA2020 MGAz51	11
SS00066	229250	7579633	GDA2020 MGAz51	12
SS00067	229249	7579673	GDA2020 MGAz51	9
SS00069	229255	7579717	GDA2020 MGAz51	11
SS00070	229251	7579752	GDA2020 MGAz51	13
SS00071	229251	7579793	GDA2020 MGAz51	16
SS00072	229251	7579832	GDA2020 MGAz51	57
SS00073	229254	7579875	GDA2020 MGAz51	169
SS00074	229251	7579915	GDA2020 MGAz51	24
SS00075	229247	7579953	GDA2020 MGAz51	29
SS00076	229248	7580193	GDA2020 MGAz51	80
SS00077	229251	7580156	GDA2020 MGAz51	67
SS00078	229251	7580116	GDA2020 MGAz51	21
SS00079	229252	7580074	GDA2020 MGAz51	11
SS00080	229253	7580036	GDA2020 MGAz51	22
SS00081	229251	7579995	GDA2020 MGAz51	18
SS00082	229172	7579634	GDA2020 MGAz51	10
SS00083	229171	7579675	GDA2020 MGAz51	13
SS00084	229169	7579712	GDA2020 MGAz51	9
SS00085	229170	7579753	GDA2020 MGAz51	9
SS00086	229169	7579792	GDA2020 MGAz51	16
SS00087	229171	7579834	GDA2020 MGAz51	20
SS00089	229178	7579872	GDA2020 MGAz51	37
SS00090	229172	7579912	GDA2020 MGAz51	132
SS00091	229172	7579952	GDA2020 MGAz51	66

For personal use only

SS00092	229169	7579993	GDA2020 MGAz51	21
SS00093	229169	7580033	GDA2020 MGAz51	12
SS00094	229174	7580074	GDA2020 MGAz51	12
SS00095	229169	7580112	GDA2020 MGAz51	26
SS00096	229170	7580153	GDA2020 MGAz51	59
SS00097	229168	7580192	GDA2020 MGAz51	29
SS00098	229091	7580192	GDA2020 MGAz51	33
SS00099	229090	7580155	GDA2020 MGAz51	53
SS00100	229090	7580115	GDA2020 MGAz51	47
SS00101	229092	7580073	GDA2020 MGAz51	50
SS00102	229088	7580035	GDA2020 MGAz51	18
SS00103	229087	7579992	GDA2020 MGAz51	24
SS00104	229091	7579956	GDA2020 MGAz51	12
SS00105	229081	7579923	GDA2020 MGAz51	13
SS00106	229087	7579875	GDA2020 MGAz51	46
SS00107	229094	7579833	GDA2020 MGAz51	23
SS00108	229091	7579793	GDA2020 MGAz51	21
SS00109	229091	7579752	GDA2020 MGAz51	8
SS00110	229092	7579713	GDA2020 MGAz51	8
SS00111	229090	7579674	GDA2020 MGAz51	8
SS00112	229090	7579635	GDA2020 MGAz51	10
SS00113	229011	7579634	GDA2020 MGAz51	8
SS00114	229009	7579673	GDA2020 MGAz51	8
SS00115	229009	7579713	GDA2020 MGAz51	7
SS00116	229009	7579754	GDA2020 MGAz51	11
SS00117	229010	7579792	GDA2020 MGAz51	17
SS00118	229012	7579834	GDA2020 MGAz51	24
SS00119	229015	7579873	GDA2020 MGAz51	27
SS00120	229011	7579916	GDA2020 MGAz51	13
SS00121	229010	7579954	GDA2020 MGAz51	5
SS00122	229013	7579993	GDA2020 MGAz51	17
SS00123	229009	7580035	GDA2020 MGAz51	60
SS00124	229008	7580073	GDA2020 MGAz51	79
SS00125	229011	7580113	GDA2020 MGAz51	45
SS00126	228931	7580116	GDA2020 MGAz51	32
SS00127	228931	7580076	GDA2020 MGAz51	54
SS00128	228930	7580034	GDA2020 MGAz51	41
SS00129	228929	7579996	GDA2020 MGAz51	40
SS00130	228932	7579954	GDA2020 MGAz51	16
SS00131	228931	7579917	GDA2020 MGAz51	15
SS00132	228930	7579871	GDA2020 MGAz51	5
SS00133	228931	7579838	GDA2020 MGAz51	18
SS00134	228927	7579795	GDA2020 MGAz51	4
SS00135	228931	7579739	GDA2020 MGAz51	2
SS00136	228931	7579716	GDA2020 MGAz51	3

For personal use only

SS00137	228932	7579676	GDA2020 MGAz51	1
SS00138	228930	7579634	GDA2020 MGAz51	2
SS00139	228852	7579633	GDA2020 MGAz51	10
SS00140	228851	7579674	GDA2020 MGAz51	15
SS00141	228853	7579714	GDA2020 MGAz51	1
SS00142	228850	7579752	GDA2020 MGAz51	-1
SS00143	228851	7579793	GDA2020 MGAz51	2
SS00144	228849	7579832	GDA2020 MGAz51	9
SS00145	228850	7579876	GDA2020 MGAz51	2
SS00146	228852	7579911	GDA2020 MGAz51	4
SS00147	228849	7579955	GDA2020 MGAz51	2
SS00148	228851	7579994	GDA2020 MGAz51	9
SS00149	228852	7580032	GDA2020 MGAz51	23
SS00150	228851	7580072	GDA2020 MGAz51	12
SS00151	228849	7580113	GDA2020 MGAz51	4
SS00152	228770	7580114	GDA2020 MGAz51	5
SS00153	228768	7580076	GDA2020 MGAz51	24
SS00154	228771	7580033	GDA2020 MGAz51	16
SS00155	228770	7579996	GDA2020 MGAz51	13
SS00156	228769	7579955	GDA2020 MGAz51	10
SS00157	228771	7579916	GDA2020 MGAz51	8
SS00158	228771	7579874	GDA2020 MGAz51	3
SS00159	228771	7579835	GDA2020 MGAz51	2
SS00160	228771	7579795	GDA2020 MGAz51	1
SS00161	228771	7579753	GDA2020 MGAz51	-1
SS00162	228769	7579714	GDA2020 MGAz51	1
SS00163	228769	7579676	GDA2020 MGAz51	3
SS00164	228770	7579634	GDA2020 MGAz51	6
SS00165	228692	7579634	GDA2020 MGAz51	2
SS00166	228690	7579674	GDA2020 MGAz51	-1
SS00167	228693	7579715	GDA2020 MGAz51	2
SS00168	228691	7579755	GDA2020 MGAz51	2
SS00169	228690	7579795	GDA2020 MGAz51	3
SS00170	228691	7579833	GDA2020 MGAz51	5
SS00171	228689	7579872	GDA2020 MGAz51	5
SS00172	228690	7579913	GDA2020 MGAz51	12
SS00173	228691	7579954	GDA2020 MGAz51	3
SS00174	228691	7579993	GDA2020 MGAz51	14
SS00175	228690	7580031	GDA2020 MGAz51	7
SS00176	228691	7580075	GDA2020 MGAz51	107
SS00177	228690	7580115	GDA2020 MGAz51	20
SS00178	228610	7580112	GDA2020 MGAz51	7
SS00179	228611	7580074	GDA2020 MGAz51	7
SS00180	228611	7580035	GDA2020 MGAz51	10
SS00181	228607	7579995	GDA2020 MGAz51	8

For personal use only

SS00182	228609	7579955	GDA2020 MGAz51	6
SS00183	228611	7579913	GDA2020 MGAz51	7
SS00184	228610	7579874	GDA2020 MGAz51	6
SS00185	228610	7579836	GDA2020 MGAz51	7
SS00186	228611	7579795	GDA2020 MGAz51	8
SS00187	228610	7579754	GDA2020 MGAz51	3
SS00188	228611	7579713	GDA2020 MGAz51	5
SS00189	228611	7579675	GDA2020 MGAz51	2
SS00190	228610	7579636	GDA2020 MGAz51	1
SS00191	228532	7579675	GDA2020 MGAz51	5
SS00192	228530	7579715	GDA2020 MGAz51	3
SS00193	228534	7579754	GDA2020 MGAz51	3
SS00194	228531	7579793	GDA2020 MGAz51	7
SS00195	228531	7579834	GDA2020 MGAz51	6
SS00196	228531	7579876	GDA2020 MGAz51	5
SS00197	228530	7579914	GDA2020 MGAz51	9
SS00198	228532	7579955	GDA2020 MGAz51	12
SS00199	228530	7579994	GDA2020 MGAz51	12
SS00200	228530	7580033	GDA2020 MGAz51	6
SS00201	228532	7580073	GDA2020 MGAz51	10
SS00202	228532	7580112	GDA2020 MGAz51	8
SS00203	228452	7580113	GDA2020 MGAz51	119
SS00204	228445	7580076	GDA2020 MGAz51	10
SS00205	228452	7580034	GDA2020 MGAz51	21
SS00206	228450	7579991	GDA2020 MGAz51	10
SS00207	228450	7579954	GDA2020 MGAz51	9
SS00208	228446	7579913	GDA2020 MGAz51	23
SS00209	228450	7579875	GDA2020 MGAz51	6
SS00210	228449	7579835	GDA2020 MGAz51	15
SS00211	228450	7579793	GDA2020 MGAz51	4
SS00212	228449	7579753	GDA2020 MGAz51	3
SS00213	228452	7579716	GDA2020 MGAz51	4
SS00214	228449	7579673	GDA2020 MGAz51	15
SS00215	228371	7579714	GDA2020 MGAz51	3
SS00216	228370	7579755	GDA2020 MGAz51	7
SS00217	228369	7579794	GDA2020 MGAz51	3
SS00218	228371	7579835	GDA2020 MGAz51	5
SS00219	228372	7579877	GDA2020 MGAz51	8
SS00220	228370	7579915	GDA2020 MGAz51	10
SS00221	228372	7579955	GDA2020 MGAz51	11
SS00222	228368	7579996	GDA2020 MGAz51	38
SS00223	228370	7580037	GDA2020 MGAz51	12
SS00224	228371	7580075	GDA2020 MGAz51	13
SS00225	228369	7580114	GDA2020 MGAz51	18
SS00226	228290	7580115	GDA2020 MGAz51	13

For personal use only

SS00227	228291	7580075	GDA2020 MGAz51	12
SS00228	228287	7580033	GDA2020 MGAz51	19
SS00229	228288	7579992	GDA2020 MGAz51	9
SS00230	228291	7579953	GDA2020 MGAz51	95
SS00231	228290	7579912	GDA2020 MGAz51	25
SS00232	228292	7579874	GDA2020 MGAz51	26
SS00233	228293	7579836	GDA2020 MGAz51	260
SS00234	228289	7579794	GDA2020 MGAz51	3
SS00235	228210	7579837	GDA2020 MGAz51	16
SS00236	228209	7579877	GDA2020 MGAz51	15
SS00237	228212	7579916	GDA2020 MGAz51	20
SS00238	228213	7579954	GDA2020 MGAz51	6
SS00239	228210	7579994	GDA2020 MGAz51	9
SS00240	228210	7580035	GDA2020 MGAz51	14
SS00241	228209	7580080	GDA2020 MGAz51	24
SS00242	228213	7580115	GDA2020 MGAz51	227
SS00243	228133	7580115	GDA2020 MGAz51	22
SS00244	228131	7580072	GDA2020 MGAz51	21
SS00245	228132	7580034	GDA2020 MGAz51	18
SS00246	228130	7579993	GDA2020 MGAz51	23
SS00247	228132	7579948	GDA2020 MGAz51	29
SS00248	228131	7579915	GDA2020 MGAz51	19
SS00249	228053	7579994	GDA2020 MGAz51	5
SS00250	228052	7580034	GDA2020 MGAz51	32
SS00251	228049	7580074	GDA2020 MGAz51	11
SS00252	228050	7580117	GDA2020 MGAz51	8
SS00253	228052	7580156	GDA2020 MGAz51	18
SS00254	228052	7580191	GDA2020 MGAz51	35
SS00255	228051	7580236	GDA2020 MGAz51	13
SS00256	228051	7580276	GDA2020 MGAz51	8
SS00257	228049	7580319	GDA2020 MGAz51	11
SS00258	228050	7580354	GDA2020 MGAz51	5
SS00259	227970	7580594	GDA2020 MGAz51	21
SS00260	227974	7580554	GDA2020 MGAz51	47
SS00261	227974	7580518	GDA2020 MGAz51	8
SS00262	227970	7580472	GDA2020 MGAz51	12
SS00263	227971	7580434	GDA2020 MGAz51	12
SS00264	227970	7580408	GDA2020 MGAz51	25
SS00265	227969	7580354	GDA2020 MGAz51	8
SS00266	227968	7580316	GDA2020 MGAz51	10
SS00267	227967	7580273	GDA2020 MGAz51	14
SS00268	227972	7580233	GDA2020 MGAz51	9
SS00269	227971	7580192	GDA2020 MGAz51	6
SS00270	227968	7580153	GDA2020 MGAz51	3
SS00271	227969	7580112	GDA2020 MGAz51	5

For personal use only

SS00272	227967	7580075	GDA2020 MGAz51	2
SS00273	227810	7579754	GDA2020 MGAz51	1
SS00274	227811	7579794	GDA2020 MGAz51	1
SS00275	227810	7579834	GDA2020 MGAz51	1
SS00276	227810	7579873	GDA2020 MGAz51	1
SS00277	227729	7579754	GDA2020 MGAz51	1
SS00278	227730	7579796	GDA2020 MGAz51	162
SS00279	227729	7579834	GDA2020 MGAz51	89
SS00280	227730	7579874	GDA2020 MGAz51	14
SS00281	227730	7579914	GDA2020 MGAz51	22
SS00282	227730	7579954	GDA2020 MGAz51	3
SS00283	227730	7579994	GDA2020 MGAz51	3
SS00284	227730	7580034	GDA2020 MGAz51	46
SS00285	227730	7580074	GDA2020 MGAz51	13
SS00286	227730	7580114	GDA2020 MGAz51	105
SS00287	227648	7580555	GDA2020 MGAz51	35
SS00288	227650	7580514	GDA2020 MGAz51	15
SS00289	227650	7580475	GDA2020 MGAz51	12
SS00290	227649	7580434	GDA2020 MGAz51	25
SS00291	227649	7580395	GDA2020 MGAz51	20
SS00292	227650	7580354	GDA2020 MGAz51	14
SS00293	227651	7580313	GDA2020 MGAz51	18
SS00294	227650	7580274	GDA2020 MGAz51	16
SS00295	227650	7580235	GDA2020 MGAz51	39
SS00296	227650	7580194	GDA2020 MGAz51	11
SS00297	227650	7580154	GDA2020 MGAz51	12
SS00298	227650	7580114	GDA2020 MGAz51	4
SS00299	227651	7580073	GDA2020 MGAz51	23
SS00300	227650	7580032	GDA2020 MGAz51	8
SS00301	227650	7579994	GDA2020 MGAz51	225
SS00302	227650	7579955	GDA2020 MGAz51	22
SS00303	227650	7579914	GDA2020 MGAz51	25
SS00304	227650	7579873	GDA2020 MGAz51	16
SS00305	227651	7579835	GDA2020 MGAz51	6
SS00306	227650	7579794	GDA2020 MGAz51	4
SS00307	227650	7579754	GDA2020 MGAz51	8
SS00308	227570	7579755	GDA2020 MGAz51	11
SS00309	227569	7579795	GDA2020 MGAz51	29
SS00310	227571	7579837	GDA2020 MGAz51	32
SS00311	227569	7579875	GDA2020 MGAz51	52
SS00312	227570	7579915	GDA2020 MGAz51	11
SS00313	227569	7579955	GDA2020 MGAz51	7
SS00314	227570	7579994	GDA2020 MGAz51	13
SS00315	227571	7580033	GDA2020 MGAz51	18
SS00316	227570	7580074	GDA2020 MGAz51	6

For personal use only

SS00317	227570	7580114	GDA2020 MGAz51	17
SS00318	227570	7580154	GDA2020 MGAz51	7
SS00319	227570	7580194	GDA2020 MGAz51	7
SS00320	227570	7580234	GDA2020 MGAz51	7
SS00321	227570	7580275	GDA2020 MGAz51	9
SS00322	227570	7580315	GDA2020 MGAz51	21
SS00323	227570	7580355	GDA2020 MGAz51	15
SS00324	227569	7580394	GDA2020 MGAz51	22
SS00325	227570	7580435	GDA2020 MGAz51	21
SS00326	227570	7580473	GDA2020 MGAz51	65
SS00327	227569	7580514	GDA2020 MGAz51	1210
SS00328	227569	7580555	GDA2020 MGAz51	350
SS00329	227490	7580554	GDA2020 MGAz51	170
SS00330	227490	7580514	GDA2020 MGAz51	68
SS00331	227490	7580474	GDA2020 MGAz51	50
SS00332	227490	7580434	GDA2020 MGAz51	52
SS00333	227490	7580394	GDA2020 MGAz51	18
SS00334	227490	7580354	GDA2020 MGAz51	20
SS00335	227490	7580315	GDA2020 MGAz51	14
SS00336	227490	7580274	GDA2020 MGAz51	21
SS00337	227490	7580235	GDA2020 MGAz51	119
SS00338	227490	7580194	GDA2020 MGAz51	4
SS00339	227490	7580154	GDA2020 MGAz51	20
SS00340	227491	7580115	GDA2020 MGAz51	35
SS00341	227491	7580074	GDA2020 MGAz51	22
SS00342	227490	7580035	GDA2020 MGAz51	17
SS00343	227490	7579995	GDA2020 MGAz51	16
SS00344	227490	7579955	GDA2020 MGAz51	5
SS00345	227490	7579915	GDA2020 MGAz51	6
SS00346	227489	7579875	GDA2020 MGAz51	17
SS00347	227489	7579835	GDA2020 MGAz51	8
SS00348	227490	7579795	GDA2020 MGAz51	58
SS00349	227490	7579755	GDA2020 MGAz51	69
SS00350	227410	7579754	GDA2020 MGAz51	39
SS00351	227410	7579794	GDA2020 MGAz51	9
SS00352	227410	7579834	GDA2020 MGAz51	7
SS00353	227410	7579874	GDA2020 MGAz51	22
SS00354	227410	7579914	GDA2020 MGAz51	42
SS00355	227410	7579954	GDA2020 MGAz51	29
SS00356	227410	7579994	GDA2020 MGAz51	29
SS00357	227410	7580034	GDA2020 MGAz51	10
SS00358	227409	7580072	GDA2020 MGAz51	11
SS00359	227409	7580113	GDA2020 MGAz51	52
SS00360	227411	7580155	GDA2020 MGAz51	46
SS00361	227409	7580195	GDA2020 MGAz51	32

For personal use only

SS00362	227409	7580234	GDA2020 MGAz51	28
SS00363	227410	7580274	GDA2020 MGAz51	14
SS00364	227409	7580314	GDA2020 MGAz51	7
SS00365	227408	7580355	GDA2020 MGAz51	13
SS00366	227410	7580396	GDA2020 MGAz51	33
SS00367	227410	7580435	GDA2020 MGAz51	28
SS00368	227410	7580474	GDA2020 MGAz51	42
SS00369	227410	7580514	GDA2020 MGAz51	56
SS00370	227410	7580554	GDA2020 MGAz51	236
SS00371	227330	7580554	GDA2020 MGAz51	29
SS00372	227329	7580515	GDA2020 MGAz51	213
SS00373	227330	7580474	GDA2020 MGAz51	39
SS00374	227330	7580434	GDA2020 MGAz51	1070
SS00375	227330	7580394	GDA2020 MGAz51	80
SS00376	227330	7580354	GDA2020 MGAz51	144
SS00377	227330	7580314	GDA2020 MGAz51	19
SS00378	227330	7580274	GDA2020 MGAz51	7
SS00379	227330	7580231	GDA2020 MGAz51	15
SS00380	227329	7580195	GDA2020 MGAz51	21
SS00381	227329	7580155	GDA2020 MGAz51	19
SS00382	227332	7580118	GDA2020 MGAz51	9
SS00383	227330	7580073	GDA2020 MGAz51	11
SS00384	227330	7580031	GDA2020 MGAz51	14
SS00385	227332	7579995	GDA2020 MGAz51	6
SS00386	227331	7579952	GDA2020 MGAz51	6
SS00387	227328	7579913	GDA2020 MGAz51	70
SS00388	227328	7579874	GDA2020 MGAz51	39
SS00389	227329	7579834	GDA2020 MGAz51	37
SS00390	227329	7579794	GDA2020 MGAz51	13
SS00391	227330	7579754	GDA2020 MGAz51	8
SS00392	227249	7580513	GDA2020 MGAz51	31
SS00393	227250	7580475	GDA2020 MGAz51	59
SS00394	227250	7580435	GDA2020 MGAz51	60
SS00395	227249	7580396	GDA2020 MGAz51	50
SS00396	227250	7580354	GDA2020 MGAz51	89
SS00397	227251	7580314	GDA2020 MGAz51	74
SS00398	227250	7580274	GDA2020 MGAz51	30
SS00399	227250	7580235	GDA2020 MGAz51	9
SS00400	227250	7580194	GDA2020 MGAz51	29
SS00401	227251	7580153	GDA2020 MGAz51	7
SS00402	227250	7580115	GDA2020 MGAz51	20
SS00403	227249	7580073	GDA2020 MGAz51	28
SS00404	227251	7580034	GDA2020 MGAz51	36
SS00405	227250	7579994	GDA2020 MGAz51	19
SS00406	227250	7579953	GDA2020 MGAz51	19

For personal use only

SS00407	227250	7579912	GDA2020 MGAz51	24
SS00408	227249	7579873	GDA2020 MGAz51	7
SS00409	227252	7579834	GDA2020 MGAz51	6
SS00410	227247	7579796	GDA2020 MGAz51	12
SS00411	227250	7579755	GDA2020 MGAz51	7
SS00412	227170	7579755	GDA2020 MGAz51	5
SS00413	227169	7579796	GDA2020 MGAz51	18
SS00414	227169	7579835	GDA2020 MGAz51	5
SS00415	227172	7579875	GDA2020 MGAz51	8
SS00416	227170	7579914	GDA2020 MGAz51	28
SS00417	227169	7579956	GDA2020 MGAz51	13
SS00418	227171	7579998	GDA2020 MGAz51	7
SS00419	227170	7580034	GDA2020 MGAz51	15
SS00420	227170	7580074	GDA2020 MGAz51	6
SS00421	227170	7580114	GDA2020 MGAz51	6
SS00422	227170	7580151	GDA2020 MGAz51	29
SS00423	227169	7580194	GDA2020 MGAz51	23
SS00424	227171	7580234	GDA2020 MGAz51	50
SS00425	227170	7580274	GDA2020 MGAz51	34
SS00426	227169	7580313	GDA2020 MGAz51	78
SS00427	227169	7580354	GDA2020 MGAz51	271
SS00428	227170	7580394	GDA2020 MGAz51	403
SS00429	227170	7580434	GDA2020 MGAz51	154
SS00430	227169	7580476	GDA2020 MGAz51	42
SS00431	227168	7580515	GDA2020 MGAz51	51
SS00432	227092	7580516	GDA2020 MGAz51	39
SS00433	227093	7580475	GDA2020 MGAz51	65
SS00434	227090	7580436	GDA2020 MGAz51	63
SS00435	227090	7580393	GDA2020 MGAz51	178
SS00436	227093	7580354	GDA2020 MGAz51	18
SS00437	227091	7580314	GDA2020 MGAz51	39
SS00438	227090	7580274	GDA2020 MGAz51	33
SS00439	227090	7580235	GDA2020 MGAz51	7
SS00440	227092	7580196	GDA2020 MGAz51	32
SS00441	227090	7580157	GDA2020 MGAz51	83
SS00442	227090	7580112	GDA2020 MGAz51	14
SS00443	227089	7580073	GDA2020 MGAz51	109
SS00444	227088	7580034	GDA2020 MGAz51	150
SS00445	227088	7579995	GDA2020 MGAz51	27
SS00446	227087	7579954	GDA2020 MGAz51	9
SS00447	227089	7579913	GDA2020 MGAz51	1700
SS00448	227090	7579875	GDA2020 MGAz51	16
SS00449	227088	7579834	GDA2020 MGAz51	15
SS00450	227089	7579795	GDA2020 MGAz51	7
SS00451	227089	7579755	GDA2020 MGAz51	25

For personal use only

SS00452	227011	7579755	GDA2020 MGAz51	11
SS00453	227009	7579796	GDA2020 MGAz51	15
SS00454	227010	7579835	GDA2020 MGAz51	31
SS00455	227007	7579872	GDA2020 MGAz51	36
SS00456	227009	7579914	GDA2020 MGAz51	9
SS00457	227011	7579955	GDA2020 MGAz51	11
SS00458	227010	7579994	GDA2020 MGAz51	29
SS00459	227009	7580034	GDA2020 MGAz51	15
SS00460	227011	7580074	GDA2020 MGAz51	26
SS00461	227011	7580112	GDA2020 MGAz51	38
SS00462	227011	7580153	GDA2020 MGAz51	23
SS00463	227010	7580194	GDA2020 MGAz51	39
SS00464	227011	7580234	GDA2020 MGAz51	12
SS00465	227009	7580273	GDA2020 MGAz51	138
SS00466	227010	7580313	GDA2020 MGAz51	19
SS00467	227004	7580352	GDA2020 MGAz51	25
SS00468	227008	7580392	GDA2020 MGAz51	16
SS00469	227010	7580433	GDA2020 MGAz51	173
SS00470	227010	7580475	GDA2020 MGAz51	78
SS00471	227008	7580517	GDA2020 MGAz51	32
SS00472	226930	7580515	GDA2020 MGAz51	332
SS00473	226929	7580475	GDA2020 MGAz51	73
SS00474	226926	7580439	GDA2020 MGAz51	79
SS00475	226931	7580391	GDA2020 MGAz51	27
SS00476	226930	7580354	GDA2020 MGAz51	14
SS00477	226929	7580315	GDA2020 MGAz51	15
SS00478	226930	7580275	GDA2020 MGAz51	76
SS00479	226929	7580234	GDA2020 MGAz51	246
SS00480	226930	7580192	GDA2020 MGAz51	177
SS00481	226931	7580153	GDA2020 MGAz51	375
SS00482	226930	7580113	GDA2020 MGAz51	26
SS00483	226931	7580074	GDA2020 MGAz51	23
SS00484	226930	7580035	GDA2020 MGAz51	25
SS00485	226930	7579995	GDA2020 MGAz51	10
SS00486	226931	7579954	GDA2020 MGAz51	9
SS00487	226930	7579914	GDA2020 MGAz51	107
SS00488	226930	7579876	GDA2020 MGAz51	27
SS00489	226930	7579834	GDA2020 MGAz51	43
SS00490	226930	7579792	GDA2020 MGAz51	7
SS00491	226930	7579753	GDA2020 MGAz51	10
SS00492	226849	7579753	GDA2020 MGAz51	10
SS00493	226852	7579793	GDA2020 MGAz51	7
SS00494	226850	7579836	GDA2020 MGAz51	41
SS00495	226850	7579875	GDA2020 MGAz51	14
SS00496	226852	7579914	GDA2020 MGAz51	164

For personal use only

SS00497	226850	7579951	GDA2020 MGAz51	9
SS00498	226852	7579992	GDA2020 MGAz51	13
SS00499	226850	7580036	GDA2020 MGAz51	14
SS00500	226850	7580073	GDA2020 MGAz51	6
SS00501	226850	7580113	GDA2020 MGAz51	13
SS00502	226849	7580154	GDA2020 MGAz51	897
SS00503	226849	7580193	GDA2020 MGAz51	77
SS00504	226850	7580233	GDA2020 MGAz51	59
SS00505	226852	7580274	GDA2020 MGAz51	37
SS00506	226850	7580312	GDA2020 MGAz51	32
SS00507	226849	7580354	GDA2020 MGAz51	18
SS00508	226850	7580393	GDA2020 MGAz51	18
SS00509	226853	7580433	GDA2020 MGAz51	40
SS00510	226852	7580474	GDA2020 MGAz51	35
SS00511	226851	7580511	GDA2020 MGAz51	78
SS00512	226769	7580471	GDA2020 MGAz51	74
SS00513	226771	7580431	GDA2020 MGAz51	13
SS00514	226768	7580389	GDA2020 MGAz51	16
SS00515	226769	7580354	GDA2020 MGAz51	9
SS00516	226770	7580315	GDA2020 MGAz51	18
SS00517	226765	7580275	GDA2020 MGAz51	33
SS00518	226771	7580232	GDA2020 MGAz51	75
SS00519	226770	7580191	GDA2020 MGAz51	8
SS00520	226768	7580154	GDA2020 MGAz51	523
SS00521	226772	7580113	GDA2020 MGAz51	10
SS00522	226771	7580071	GDA2020 MGAz51	12
SS00523	226770	7580034	GDA2020 MGAz51	3
SS00524	226770	7579995	GDA2020 MGAz51	170
SS00525	226771	7579955	GDA2020 MGAz51	10
SS00526	226769	7579915	GDA2020 MGAz51	10
SS00527	226770	7579872	GDA2020 MGAz51	537
SS00528	226770	7579832	GDA2020 MGAz51	3
SS00529	226770	7579794	GDA2020 MGAz51	106
SS00530	226770	7579755	GDA2020 MGAz51	59
SS00531	226688	7579756	GDA2020 MGAz51	44
SS00532	226689	7579793	GDA2020 MGAz51	9
SS00533	226690	7579837	GDA2020 MGAz51	3
SS00534	226691	7579872	GDA2020 MGAz51	5
SS00535	226689	7579913	GDA2020 MGAz51	6
SS00536	226689	7579954	GDA2020 MGAz51	10
SS00537	226690	7579995	GDA2020 MGAz51	18
SS00538	226691	7580033	GDA2020 MGAz51	6
SS00539	226690	7580075	GDA2020 MGAz51	1750
SS00540	226693	7580114	GDA2020 MGAz51	21
SS00541	226693	7580154	GDA2020 MGAz51	16

For personal use only

SS00542	226691	7580197	GDA2020 MGAz51	21
SS00543	226690	7580235	GDA2020 MGAz51	13
SS00544	226690	7580276	GDA2020 MGAz51	16
SS00545	226691	7580313	GDA2020 MGAz51	26
SS00546	226690	7580356	GDA2020 MGAz51	202
SS00547	226688	7580395	GDA2020 MGAz51	69
SS00548	226690	7580433	GDA2020 MGAz51	28
SS00549	226691	7580474	GDA2020 MGAz51	42
SS00550	226611	7580475	GDA2020 MGAz51	19
SS00551	226206	7580440	GDA2020 MGAz51	7
SS00552	226209	7580394	GDA2020 MGAz51	22
SS00553	226210	7580354	GDA2020 MGAz51	22
SS00554	226210	7580313	GDA2020 MGAz51	11
SS00555	226211	7580273	GDA2020 MGAz51	7
SS00556	226210	7580234	GDA2020 MGAz51	13
SS00557	226210	7580195	GDA2020 MGAz51	6
SS00558	226210	7580154	GDA2020 MGAz51	10
SS00559	226210	7580115	GDA2020 MGAz51	15
SS00560	226210	7580074	GDA2020 MGAz51	33
SS00561	226211	7580035	GDA2020 MGAz51	206
SS00562	226210	7579994	GDA2020 MGAz51	19
SS00563	226210	7579955	GDA2020 MGAz51	47
SS00564	226209	7579913	GDA2020 MGAz51	21
SS00565	226209	7579875	GDA2020 MGAz51	10
SS00566	226210	7579834	GDA2020 MGAz51	13
SS00567	226210	7579795	GDA2020 MGAz51	17
SS00568	226210	7579754	GDA2020 MGAz51	9
SS00569	226210	7579714	GDA2020 MGAz51	28
SS00570	226210	7579675	GDA2020 MGAz51	33
SS00571	226210	7579635	GDA2020 MGAz51	6
SS00572	226210	7579594	GDA2020 MGAz51	24
SS00573	226290	7579635	GDA2020 MGAz51	34
SS00574	226290	7579674	GDA2020 MGAz51	5
SS00575	226291	7579714	GDA2020 MGAz51	8
SS00576	226290	7579753	GDA2020 MGAz51	24
SS00577	226291	7579796	GDA2020 MGAz51	83
SS00578	226289	7579835	GDA2020 MGAz51	3
SS00579	226288	7579873	GDA2020 MGAz51	6
SS00580	226291	7579914	GDA2020 MGAz51	9
SS00581	226290	7579954	GDA2020 MGAz51	39
SS00582	226290	7579991	GDA2020 MGAz51	12
SS00583	226289	7580035	GDA2020 MGAz51	65
SS00584	226291	7580074	GDA2020 MGAz51	8
SS00585	226288	7580112	GDA2020 MGAz51	22
SS00586	226291	7580154	GDA2020 MGAz51	11

For personal use only

SS00587	226290	7580194	GDA2020 MGAz51	8
SS00588	226290	7580234	GDA2020 MGAz51	11
SS00589	226290	7580273	GDA2020 MGAz51	20
SS00590	226290	7580314	GDA2020 MGAz51	25
SS00591	226290	7580353	GDA2020 MGAz51	13
SS00592	226291	7580395	GDA2020 MGAz51	23
SS00593	226290	7580435	GDA2020 MGAz51	6
SS00594	226370	7580474	GDA2020 MGAz51	12
SS00595	226371	7580435	GDA2020 MGAz51	9
SS00596	226370	7580396	GDA2020 MGAz51	8
SS00597	226370	7580353	GDA2020 MGAz51	15
SS00598	226371	7580314	GDA2020 MGAz51	13
SS00599	226370	7580274	GDA2020 MGAz51	12
SS00600	226370	7580194	GDA2020 MGAz51	5
SS00601	226371	7580154	GDA2020 MGAz51	15
SS00602	226371	7580114	GDA2020 MGAz51	12
SS00603	226370	7580075	GDA2020 MGAz51	13
SS00604	226370	7580034	GDA2020 MGAz51	38
SS00605	226370	7579995	GDA2020 MGAz51	10
SS00606	226370	7579954	GDA2020 MGAz51	11
SS00607	226370	7579914	GDA2020 MGAz51	11
SS00608	226370	7579874	GDA2020 MGAz51	776
SS00609	226371	7579834	GDA2020 MGAz51	28
SS00610	226370	7579794	GDA2020 MGAz51	35
SS00611	226370	7579755	GDA2020 MGAz51	8
SS00612	226370	7579714	GDA2020 MGAz51	6
SS00613	226370	7579675	GDA2020 MGAz51	4
SS00614	226371	7579634	GDA2020 MGAz51	33
SS00615	226448	7579675	GDA2020 MGAz51	2
SS00616	226450	7579715	GDA2020 MGAz51	4
SS00617	226450	7579755	GDA2020 MGAz51	43
SS00618	226450	7579793	GDA2020 MGAz51	165
SS00619	226451	7579834	GDA2020 MGAz51	64
SS00620	226450	7579875	GDA2020 MGAz51	81
SS00621	226451	7579914	GDA2020 MGAz51	10
SS00622	226450	7579955	GDA2020 MGAz51	178
SS00623	226452	7579994	GDA2020 MGAz51	8
SS00624	226450	7580036	GDA2020 MGAz51	27
SS00625	226451	7580074	GDA2020 MGAz51	58
SS00626	226451	7580114	GDA2020 MGAz51	76
SS00627	226450	7580154	GDA2020 MGAz51	17
SS00628	226450	7580195	GDA2020 MGAz51	10
SS00629	226370	7580235	GDA2020 MGAz51	34
SS00630	226450	7580235	GDA2020 MGAz51	8
SS00631	226451	7580274	GDA2020 MGAz51	10

For personal use only

SS00632	226451	7580315	GDA2020 MGAz51	15
SS00633	226450	7580355	GDA2020 MGAz51	19
SS00634	226450	7580395	GDA2020 MGAz51	11
SS00635	226450	7580435	GDA2020 MGAz51	22
SS00636	226451	7580474	GDA2020 MGAz51	32
SS00637	226529	7580473	GDA2020 MGAz51	26
SS00638	226529	7580435	GDA2020 MGAz51	13
SS00639	226530	7580394	GDA2020 MGAz51	9
SS00640	226530	7580353	GDA2020 MGAz51	131
SS00641	226530	7580314	GDA2020 MGAz51	13
SS00642	226531	7580274	GDA2020 MGAz51	9
SS00643	226530	7580233	GDA2020 MGAz51	73
SS00644	226530	7580194	GDA2020 MGAz51	33
SS00645	226529	7580154	GDA2020 MGAz51	8
SS00646	226531	7580114	GDA2020 MGAz51	37
SS00647	226531	7580074	GDA2020 MGAz51	18
SS00648	226531	7580034	GDA2020 MGAz51	5
SS00649	226531	7579994	GDA2020 MGAz51	3
SS00650	226529	7579954	GDA2020 MGAz51	38
SS00651	226531	7579914	GDA2020 MGAz51	4
SS00652	226530	7579875	GDA2020 MGAz51	5
SS00653	226530	7579835	GDA2020 MGAz51	14
SS00654	226530	7579795	GDA2020 MGAz51	58
SS00655	226530	7579755	GDA2020 MGAz51	52
SS00656	226530	7579716	GDA2020 MGAz51	14
SS00657	226530	7579674	GDA2020 MGAz51	7
SS00658	226610	7579714	GDA2020 MGAz51	3
SS00659	226610	7579755	GDA2020 MGAz51	6
SS00660	226619	7579792	GDA2020 MGAz51	32
SS00661	226610	7579835	GDA2020 MGAz51	30
SS00662	226611	7579875	GDA2020 MGAz51	27
SS00663	226611	7579914	GDA2020 MGAz51	6
SS00664	226610	7579955	GDA2020 MGAz51	11
SS00665	226610	7579994	GDA2020 MGAz51	13
SS00666	225481	7579034	GDA2020 MGAz51	7
SS00667	225489	7578994	GDA2020 MGAz51	13
SS00668	225490	7578954	GDA2020 MGAz51	9
SS00669	225489	7578913	GDA2020 MGAz51	5
SS00670	225410	7578874	GDA2020 MGAz51	9
SS00671	225410	7578915	GDA2020 MGAz51	6
SS00672	225411	7578953	GDA2020 MGAz51	3
SS00673	225411	7578995	GDA2020 MGAz51	4
SS00674	225411	7579034	GDA2020 MGAz51	3
SS00675	225409	7579074	GDA2020 MGAz51	3
SS00676	226610	7580433	GDA2020 MGAz51	21

For personal use only

SS00677	226612	7580392	GDA2020 MGAz51	13
SS00678	226612	7580354	GDA2020 MGAz51	39
SS00679	226609	7580315	GDA2020 MGAz51	289
SS00680	226610	7580275	GDA2020 MGAz51	15
SS00681	226610	7580234	GDA2020 MGAz51	14
SS00682	226609	7580193	GDA2020 MGAz51	15
SS00683	226608	7580114	GDA2020 MGAz51	132
SS00684	226609	7580153	GDA2020 MGAz51	12
SS00685	226610	7580073	GDA2020 MGAz51	18
SS00686	226609	7580033	GDA2020 MGAz51	45
SS00687	224047	7579197	GDA2020 MGAz51	14
SS00688	224045	7579240	GDA2020 MGAz51	11
SS00689	224047	7579275	GDA2020 MGAz51	4
SS00690	224050	7579315	GDA2020 MGAz51	14
SS00691	224050	7579355	GDA2020 MGAz51	7
SS00692	224129	7579395	GDA2020 MGAz51	8
SS00693	224127	7579355	GDA2020 MGAz51	16
SS00694	224129	7579317	GDA2020 MGAz51	28
SS00695	224133	7579272	GDA2020 MGAz51	5
SS00696	224128	7579235	GDA2020 MGAz51	187
SS00697	224130	7579196	GDA2020 MGAz51	75
SS00698	224128	7579152	GDA2020 MGAz51	11
SS00699	224208	7579113	GDA2020 MGAz51	5
SS00700	224212	7579152	GDA2020 MGAz51	14
SS00701	224211	7579194	GDA2020 MGAz51	20
SS00702	224210	7579234	GDA2020 MGAz51	7
SS00703	224210	7579274	GDA2020 MGAz51	18
SS00704	224205	7579318	GDA2020 MGAz51	44
SS00705	224210	7579353	GDA2020 MGAz51	142
SS00706	224209	7579393	GDA2020 MGAz51	12
SS00707	224294	7579395	GDA2020 MGAz51	8
SS00708	224293	7579354	GDA2020 MGAz51	9
SS00709	224288	7579315	GDA2020 MGAz51	10
SS00710	224291	7579275	GDA2020 MGAz51	9
SS00711	224290	7579233	GDA2020 MGAz51	71
SS00712	224290	7579195	GDA2020 MGAz51	59
SS00713	224288	7579154	GDA2020 MGAz51	5
SS00714	224289	7579115	GDA2020 MGAz51	7
SS00715	224289	7579074	GDA2020 MGAz51	8
SS00716	224368	7579034	GDA2020 MGAz51	5
SS00717	224368	7579072	GDA2020 MGAz51	13
SS00718	224372	7579112	GDA2020 MGAz51	8
SS00719	224450	7579115	GDA2020 MGAz51	10
SS00720	224448	7579076	GDA2020 MGAz51	11
SS00721	224446	7579034	GDA2020 MGAz51	11

For personal use only

SS00722	224449	7578991	GDA2020 MGAz51	8
SS00723	224450	7578952	GDA2020 MGAz51	44
SS00724	224532	7579074	GDA2020 MGAz51	15
SS00725	224527	7579034	GDA2020 MGAz51	19
SS00726	224531	7578996	GDA2020 MGAz51	6
SS00727	224530	7578956	GDA2020 MGAz51	14
SS00728	224529	7578917	GDA2020 MGAz51	6
SS00729	224531	7579115	GDA2020 MGAz51	123
SS00730	224531	7579154	GDA2020 MGAz51	6
SS00731	224452	7579154	GDA2020 MGAz51	3
SS00732	224367	7579154	GDA2020 MGAz51	29
SS00733	224371	7579191	GDA2020 MGAz51	6
SS00734	224369	7579233	GDA2020 MGAz51	38
SS00735	224367	7579273	GDA2020 MGAz51	5
SS00736	224370	7579313	GDA2020 MGAz51	14
SS00737	224447	7579313	GDA2020 MGAz51	27
SS00738	224450	7579275	GDA2020 MGAz51	7
SS00739	224448	7579235	GDA2020 MGAz51	7
SS00740	224449	7579196	GDA2020 MGAz51	5
SS00741	224530	7579194	GDA2020 MGAz51	8
SS00742	224531	7579235	GDA2020 MGAz51	14
SS00743	224531	7579276	GDA2020 MGAz51	34
SS00744	224530	7579311	GDA2020 MGAz51	28
SS00745	224530	7579353	GDA2020 MGAz51	9
SS00746	224450	7579354	GDA2020 MGAz51	31
SS00747	224529	7579396	GDA2020 MGAz51	11
SS00748	224450	7579393	GDA2020 MGAz51	6
SS00749	224370	7579356	GDA2020 MGAz51	12
SS00750	224370	7579394	GDA2020 MGAz51	36
SS00751	224609	7579435	GDA2020 MGAz51	15
SS00752	224613	7579394	GDA2020 MGAz51	13
SS00753	224611	7579350	GDA2020 MGAz51	7
SS00754	224609	7579313	GDA2020 MGAz51	21
SS00755	224612	7579273	GDA2020 MGAz51	8
SS00756	224612	7579232	GDA2020 MGAz51	5
SS00757	224609	7579195	GDA2020 MGAz51	8
SS00758	224613	7579153	GDA2020 MGAz51	27
SS00759	224608	7579114	GDA2020 MGAz51	35
SS00760	224608	7579074	GDA2020 MGAz51	5
SS00761	224611	7579038	GDA2020 MGAz51	9
SS00762	224608	7578995	GDA2020 MGAz51	5
SS00763	224609	7578954	GDA2020 MGAz51	15
SS00764	224608	7578914	GDA2020 MGAz51	2
SS00765	224610	7578873	GDA2020 MGAz51	7
SS00766	224689	7578916	GDA2020 MGAz51	8

For personal use only

SS00767	224690	7578954	GDA2020 MGAz51	2
SS00768	224693	7578992	GDA2020 MGAz51	8
SS00769	224769	7578994	GDA2020 MGAz51	8
SS00770	224850	7578950	GDA2020 MGAz51	15
SS00771	224769	7578950	GDA2020 MGAz51	7
SS00772	224772	7578912	GDA2020 MGAz51	46
SS00773	224928	7578954	GDA2020 MGAz51	22
SS00774	224853	7578991	GDA2020 MGAz51	16
SS00775	224928	7578994	GDA2020 MGAz51	9
SS00776	224931	7578913	GDA2020 MGAz51	6
SS00777	224930	7578871	GDA2020 MGAz51	24
SS00778	224930	7578830	GDA2020 MGAz51	28
SS00779	224932	7578794	GDA2020 MGAz51	28
SS00780	224847	7578795	GDA2020 MGAz51	25
SS00781	224769	7578793	GDA2020 MGAz51	33
SS00782	224849	7578837	GDA2020 MGAz51	39
SS00783	224851	7578873	GDA2020 MGAz51	11
SS00784	224846	7578915	GDA2020 MGAz51	9
SS00785	224771	7578875	GDA2020 MGAz51	8
SS00786	224692	7578876	GDA2020 MGAz51	9
SS00787	224690	7578835	GDA2020 MGAz51	18
SS00788	224769	7578834	GDA2020 MGAz51	19
SS00789	224693	7579440	GDA2020 MGAz51	27
SS00790	224694	7579395	GDA2020 MGAz51	8
SS00791	224690	7579354	GDA2020 MGAz51	11
SS00792	224687	7579318	GDA2020 MGAz51	7
SS00793	224689	7579276	GDA2020 MGAz51	33
SS00794	224691	7579241	GDA2020 MGAz51	101
SS00795	224692	7579196	GDA2020 MGAz51	16
SS00796	224693	7579154	GDA2020 MGAz51	9
SS00797	224687	7579115	GDA2020 MGAz51	13
SS00798	224690	7579072	GDA2020 MGAz51	52
SS00799	224691	7579034	GDA2020 MGAz51	22
SS00800	224772	7579032	GDA2020 MGAz51	53
SS00801	225331	7579476	GDA2020 MGAz51	9
SS00802	225329	7579436	GDA2020 MGAz51	10
SS00803	225329	7579394	GDA2020 MGAz51	8
SS00804	225331	7579355	GDA2020 MGAz51	8
SS00805	225331	7579314	GDA2020 MGAz51	12
SS00806	225330	7579274	GDA2020 MGAz51	4
SS00807	225329	7579234	GDA2020 MGAz51	15
SS00808	225330	7579193	GDA2020 MGAz51	268
SS00809	225330	7579154	GDA2020 MGAz51	15
SS00810	225330	7579113	GDA2020 MGAz51	8
SS00811	225330	7579074	GDA2020 MGAz51	4

For personal use only

SS00812	225332	7579033	GDA2020 MGAz51	3
SS00813	225330	7578994	GDA2020 MGAz51	4
SS00814	225330	7578954	GDA2020 MGAz51	4
SS00815	225330	7578914	GDA2020 MGAz51	3
SS00816	225331	7578875	GDA2020 MGAz51	6
SS00817	225331	7578835	GDA2020 MGAz51	5
SS00818	225250	7578794	GDA2020 MGAz51	8
SS00819	225250	7578834	GDA2020 MGAz51	9
SS00820	225250	7578874	GDA2020 MGAz51	103
SS00821	225170	7578875	GDA2020 MGAz51	19
SS00822	225170	7578833	GDA2020 MGAz51	7
SS00823	225170	7578794	GDA2020 MGAz51	7
SS00824	225250	7578916	GDA2020 MGAz51	7
SS00825	225252	7578954	GDA2020 MGAz51	6
SS00826	225253	7578996	GDA2020 MGAz51	4
SS00827	225250	7579035	GDA2020 MGAz51	15
SS00828	225245	7579067	GDA2020 MGAz51	5
SS00829	225247	7579119	GDA2020 MGAz51	16
SS00830	225244	7579151	GDA2020 MGAz51	4
SS00831	225250	7579194	GDA2020 MGAz51	3
SS00832	225250	7579234	GDA2020 MGAz51	4
SS00833	225248	7579279	GDA2020 MGAz51	3
SS00834	225250	7579314	GDA2020 MGAz51	4
SS00835	225170	7579315	GDA2020 MGAz51	2
SS00836	225091	7579274	GDA2020 MGAz51	7
SS00837	225010	7579234	GDA2020 MGAz51	10
SS00838	224930	7579196	GDA2020 MGAz51	9
SS00839	225251	7579354	GDA2020 MGAz51	5
SS00840	225250	7579394	GDA2020 MGAz51	82
SS00841	225170	7579354	GDA2020 MGAz51	6
SS00842	225090	7579315	GDA2020 MGAz51	10
SS00843	225090	7579395	GDA2020 MGAz51	34
SS00844	225170	7579393	GDA2020 MGAz51	10
SS00845	225249	7579434	GDA2020 MGAz51	9
SS00846	225010	7579396	GDA2020 MGAz51	5
SS00847	224928	7579353	GDA2020 MGAz51	4
SS00848	225250	7579474	GDA2020 MGAz51	8
SS00849	225170	7579436	GDA2020 MGAz51	10
SS00850	225170	7579474	GDA2020 MGAz51	18
SS00851	225172	7579234	GDA2020 MGAz51	6
SS00852	225175	7579260	GDA2020 MGAz51	5
SS00853	225171	7579195	GDA2020 MGAz51	326
SS00854	225170	7579155	GDA2020 MGAz51	3
SS00855	225170	7579114	GDA2020 MGAz51	18
SS00856	225171	7579073	GDA2020 MGAz51	29

For personal use only

SS00857	225170	7579035	GDA2020 MGAz51	7
SS00858	225170	7578995	GDA2020 MGAz51	7
SS00859	225170	7578955	GDA2020 MGAz51	7
SS00860	225170	7578914	GDA2020 MGAz51	5
SS00861	225090	7578994	GDA2020 MGAz51	9
SS00862	225091	7578954	GDA2020 MGAz51	5
SS00863	225093	7579473	GDA2020 MGAz51	5
SS00864	225089	7579434	GDA2020 MGAz51	37
SS00865	225089	7579357	GDA2020 MGAz51	11
SS00866	225090	7579235	GDA2020 MGAz51	5
SS00867	225090	7579194	GDA2020 MGAz51	5
SS00868	225090	7579155	GDA2020 MGAz51	9
SS00869	225090	7579115	GDA2020 MGAz51	13
SS00870	225090	7579075	GDA2020 MGAz51	2
SS00871	225091	7579034	GDA2020 MGAz51	9
SS00872	225090	7578914	GDA2020 MGAz51	6
SS00873	225090	7578874	GDA2020 MGAz51	8
SS00874	225090	7578834	GDA2020 MGAz51	5
SS00875	225090	7578794	GDA2020 MGAz51	9
SS00876	225010	7578795	GDA2020 MGAz51	6
SS00877	225009	7578834	GDA2020 MGAz51	4
SS00878	225010	7578875	GDA2020 MGAz51	5
SS00879	225010	7578915	GDA2020 MGAz51	22
SS00880	225010	7578954	GDA2020 MGAz51	15
SS00881	225010	7578994	GDA2020 MGAz51	8
SS00882	225009	7579035	GDA2020 MGAz51	36
SS00883	225009	7579076	GDA2020 MGAz51	18
SS00884	225010	7579115	GDA2020 MGAz51	4
SS00885	225011	7579153	GDA2020 MGAz51	6
SS00886	225011	7579194	GDA2020 MGAz51	13
SS00887	225009	7579274	GDA2020 MGAz51	8
SS00888	225010	7579315	GDA2020 MGAz51	15
SS00889	225010	7579355	GDA2020 MGAz51	10
SS00890	225010	7579434	GDA2020 MGAz51	72
SS00891	225011	7579477	GDA2020 MGAz51	8
SS00892	224929	7579434	GDA2020 MGAz51	464
SS00893	224930	7579393	GDA2020 MGAz51	4
SS00894	224930	7579314	GDA2020 MGAz51	43
SS00895	224928	7579276	GDA2020 MGAz51	13
SS00896	224930	7579234	GDA2020 MGAz51	6
SS00897	224929	7579154	GDA2020 MGAz51	4
SS00898	224930	7579112	GDA2020 MGAz51	22
SS00899	224930	7579074	GDA2020 MGAz51	5
SS00900	224931	7579035	GDA2020 MGAz51	4
SS00901	224849	7579038	GDA2020 MGAz51	23

For personal use only

SS00902	224849	7579074	GDA2020 MGAz51	7
SS00903	224852	7579114	GDA2020 MGAz51	4
SS00904	224850	7579155	GDA2020 MGAz51	2
SS00905	224851	7579196	GDA2020 MGAz51	63
SS00906	224849	7579234	GDA2020 MGAz51	81
SS00907	224851	7579275	GDA2020 MGAz51	209
SS00908	224849	7579314	GDA2020 MGAz51	34
SS00909	224849	7579354	GDA2020 MGAz51	3
SS00910	224852	7579395	GDA2020 MGAz51	11
SS00911	224850	7579435	GDA2020 MGAz51	10
SS00912	224770	7579435	GDA2020 MGAz51	6
SS00913	224770	7579395	GDA2020 MGAz51	15
SS00914	224770	7579354	GDA2020 MGAz51	6
SS00915	224771	7579314	GDA2020 MGAz51	8
SS00916	224770	7579275	GDA2020 MGAz51	6
SS00917	228290	7587394	GDA2020 MGAz51	10
SS00918	228290	7587434	GDA2020 MGAz51	11
SS00919	228291	7587475	GDA2020 MGAz51	3
SS00920	228288	7587513	GDA2020 MGAz51	11
SS00921	228283	7587556	GDA2020 MGAz51	2
SS00922	228290	7587595	GDA2020 MGAz51	7
SS00923	228290	7587634	GDA2020 MGAz51	13
SS00924	228293	7587675	GDA2020 MGAz51	7
SS00925	228291	7587714	GDA2020 MGAz51	2
SS00926	228291	7587754	GDA2020 MGAz51	4
SS00927	228210	7587714	GDA2020 MGAz51	4
SS00928	228210	7587674	GDA2020 MGAz51	13
SS00929	228210	7587635	GDA2020 MGAz51	16
SS00930	228208	7587590	GDA2020 MGAz51	2
SS00931	228210	7587556	GDA2020 MGAz51	5
SS00932	228210	7587514	GDA2020 MGAz51	3
SS00933	228211	7587476	GDA2020 MGAz51	9
SS00934	228211	7587432	GDA2020 MGAz51	14
SS00935	228215	7587392	GDA2020 MGAz51	6
SS00936	228130	7587394	GDA2020 MGAz51	6
SS00937	228130	7587434	GDA2020 MGAz51	19
SS00938	228130	7587474	GDA2020 MGAz51	13
SS00939	228132	7587517	GDA2020 MGAz51	2
SS00940	228131	7587555	GDA2020 MGAz51	1
SS00941	228130	7587594	GDA2020 MGAz51	7
SS00942	228129	7587632	GDA2020 MGAz51	3
SS00943	228049	7587632	GDA2020 MGAz51	2
SS00944	228050	7587598	GDA2020 MGAz51	2
SS00945	228051	7587555	GDA2020 MGAz51	6
SS00946	228050	7587514	GDA2020 MGAz51	2

For personal use only

SS00947	228049	7587474	GDA2020 MGAz51	10
SS00948	228052	7587433	GDA2020 MGAz51	4
SS00949	228050	7587395	GDA2020 MGAz51	3
SS00950	227969	7587397	GDA2020 MGAz51	5
SS00951	227970	7587434	GDA2020 MGAz51	14
SS00952	227970	7587474	GDA2020 MGAz51	6
SS00953	227970	7587515	GDA2020 MGAz51	2
SS00954	227971	7587554	GDA2020 MGAz51	5
SS00955	227973	7587597	GDA2020 MGAz51	1
SS00956	227649	7587875	GDA2020 MGAz51	3
SS00957	227650	7587835	GDA2020 MGAz51	2
SS00958	227652	7587794	GDA2020 MGAz51	4
SS00959	227648	7587754	GDA2020 MGAz51	6
SS00960	227569	7587714	GDA2020 MGAz51	5
SS00961	227569	7587791	GDA2020 MGAz51	4
SS00962	227569	7587791	GDA2020 MGAz51	6
SS00963	227571	7587832	GDA2020 MGAz51	7
SS00964	227572	7587870	GDA2020 MGAz51	207
SS00965	227566	7587913	GDA2020 MGAz51	5
SS00966	224771	7579072	GDA2020 MGAz51	7
SS00967	224770	7579114	GDA2020 MGAz51	5
SS00968	224769	7579154	GDA2020 MGAz51	8
SS00969	224769	7579192	GDA2020 MGAz51	49
SS00970	224767	7579234	GDA2020 MGAz51	16
SS00971	227573	7587949	GDA2020 MGAz51	2
SS00972	227573	7587991	GDA2020 MGAz51	12
SS00973	227493	7588080	GDA2020 MGAz51	12
SS00974	227493	7588031	GDA2020 MGAz51	4
SS00975	227488	7587994	GDA2020 MGAz51	15
SS00976	227486	7587951	GDA2020 MGAz51	3
SS00977	227486	7587912	GDA2020 MGAz51	11
SS00978	227489	7587876	GDA2020 MGAz51	2
SS00979	227488	7587832	GDA2020 MGAz51	2
SS00980	227497	7587794	GDA2020 MGAz51	1
SS00981	227488	7587753	GDA2020 MGAz51	3
SS00982	227488	7587715	GDA2020 MGAz51	5
SS00983	227489	7587669	GDA2020 MGAz51	6
SS00984	227488	7587634	GDA2020 MGAz51	8
SS00985	227407	7587593	GDA2020 MGAz51	4
SS00986	227410	7587633	GDA2020 MGAz51	3
SS00987	227413	7587674	GDA2020 MGAz51	6
SS00988	227410	7587716	GDA2020 MGAz51	6
SS00989	227410	7587757	GDA2020 MGAz51	6
SS00990	227409	7587792	GDA2020 MGAz51	4
SS00991	227411	7587835	GDA2020 MGAz51	1

For personal use only

SS00992	227410	7587875	GDA2020 MGAz51	2
SS00993	227411	7587914	GDA2020 MGAz51	7
SS00994	227409	7587954	GDA2020 MGAz51	7
SS00995	227410	7587998	GDA2020 MGAz51	4
SS00996	227410	7588036	GDA2020 MGAz51	14
SS00997	227410	7588075	GDA2020 MGAz51	5
SS00998	227330	7588034	GDA2020 MGAz51	4
SS00999	227331	7587992	GDA2020 MGAz51	1
SS01000	227330	7587955	GDA2020 MGAz51	2
SS01001	227330	7587916	GDA2020 MGAz51	10
SS01002	227327	7587874	GDA2020 MGAz51	1
SS01003	227328	7587836	GDA2020 MGAz51	7
SS01004	227329	7587794	GDA2020 MGAz51	3
SS01005	227329	7587752	GDA2020 MGAz51	2
SS01006	227329	7587712	GDA2020 MGAz51	6
SS01007	227327	7587673	GDA2020 MGAz51	7
SS01008	227328	7587634	GDA2020 MGAz51	23
SS01009	227331	7587589	GDA2020 MGAz51	21
SS01010	227333	7587553	GDA2020 MGAz51	7
SS01011	227252	7587514	GDA2020 MGAz51	11
SS01012	227249	7587555	GDA2020 MGAz51	7
SS01013	227249	7587595	GDA2020 MGAz51	2
SS01014	227251	7587633	GDA2020 MGAz51	7
SS01015	227250	7587676	GDA2020 MGAz51	7
SS01016	227249	7587715	GDA2020 MGAz51	5
SS01017	227250	7587757	GDA2020 MGAz51	2
SS01018	227250	7587795	GDA2020 MGAz51	4
SS01019	227251	7587836	GDA2020 MGAz51	11
SS01020	227250	7587876	GDA2020 MGAz51	2
SS01101	227968	7587636	GDA2020 MGAz51	3
SS01102	227889	7587635	GDA2020 MGAz51	6
SS01103	227892	7587592	GDA2020 MGAz51	9
SS01104	227890	7587554	GDA2020 MGAz51	2
SS01105	227890	7587515	GDA2020 MGAz51	4
SS01106	227892	7587474	GDA2020 MGAz51	1
SS01107	227892	7587435	GDA2020 MGAz51	8
SS01108	227889	7587394	GDA2020 MGAz51	2
SS01109	227810	7587434	GDA2020 MGAz51	2
SS01110	227809	7587475	GDA2020 MGAz51	6
SS01111	227811	7587514	GDA2020 MGAz51	4
SS01112	227810	7587554	GDA2020 MGAz51	4
SS01113	227810	7587595	GDA2020 MGAz51	6
SS01114	227810	7587634	GDA2020 MGAz51	2
SS01115	227728	7587592	GDA2020 MGAz51	2
SS01116	227730	7587553	GDA2020 MGAz51	6

SS01117	227733	7587513	GDA2020 MGAz51	3
SS01118	227730	7587474	GDA2020 MGAz51	9

For personal use only

This ASX announcement has been authorised for release by the Board of Moho Resources Limited.

For further information, please contact:

Mr Peter Christie
Chairman
Moho Resources Limited
admin@mohoresources.com.au

Gareth Quinn
Investor Relations
gareth@republicir.com.au
0417 711 108

Competent Persons Statements

The information in this report that relates to Exploration Results and Exploration Targets is based on information compiled by Mr. Graeme Hardwick. Mr. Hardwick is a Member of Australian Institute of Geoscientists (MAIG) and Moho Resource's Exploration Manager and has sufficient experience that is relevant to the style of mineralisation and type of deposit under consideration and to the activity which he is undertaking to qualify as Competent Person as defined in the 2012 Edition of the Australasian Code for Reporting of Exploration Results, Mineral Resources and Ore Reserves. Mr. Hardwick consents to the inclusion in the report of the matters based on his information in the form and context in which it appears.

Forward-Looking Statements

This document may include forward-looking statements. Forward-looking statements include, but are not limited to, statements concerning Moho Resources Limited's planned exploration program and other statements that are not historical facts. When used in this document, words such as "could," "plan," "expect," "intend," "may", "potential," "should," and similar expressions are forward-looking statements. Although Moho believes that its expectations reflected in these forward- looking statements are reasonable, such statements involve risks and uncertainties and no assurance can be given that further exploration activities will result in the actual values, results or events expressed or implied in this document.

About Moho Resources

Moho Resources Ltd is an Australian natural resources company advancing early-stage gold and other metals projects in Western Australia through exploration towards development. Moho controls a 100% interest of its portfolio. The Bush Chook Gold Project in the Pilbara Craton is currently the company's priority focus area. Moho's Board is chaired by Mr Peter Christie, a qualified accountant and tax agent and highly successful businessman. He has served on the boards of several public companies in the resource sector since 2006 and is the current club president of WAFL club, the South Fremantle Bulldogs. Mr Christie is joined on the Board by Mr Bryce Gould and Ms Greta Purich. Mr Gould is an experienced corporate advisor who has a long track record of helping small-cap companies to meet their capital raising goals and engage and attract investors. Ms Purich is an experienced geologist and mining engineer bringing technical expertise to the company's direction and project development.

For more information about the Company's exploration activities, please refer to previous announcements:

- ASX:MOH 25 March 2026: Bush Chook expanded with historic high-grade gold mine added
- ASX:MOH 5 February 2026: New Drill Targets Unlocked Following Tenement Grants
- ASX:MOH 3 February 2026: Bush Chook Project Update

JORC Code, 2012 Edition – Table 1: Bush Chook Project

Section 1 Sampling Techniques and Data

(Criteria in this section apply to all succeeding sections.)

Criteria	JORC Code explanation	Commentary
Sampling techniques	<ul style="list-style-type: none"> Nature and quality of sampling (eg cut channels, random chips, or specific specialized industry standard measurement tools appropriate to the minerals under investigation, such as down hole gamma sondes, or handheld XRF instruments, etc). These examples should not be taken as limiting the broad meaning of sampling. Include reference to measures taken to ensure sample representivity and the appropriate calibration of any measurement tools or systems used. Aspects of the determination of mineralisation that are Material to the Public Report. In cases where 'industry standard' work has been done this would be relatively simple (eg 'reverse circulation drilling was used to obtain 1 m samples from which 3 kg was pulverised to produce a 30 g charge for fire assay'). In other cases more explanation may be required, such as where there is coarse gold that has inherent sampling problems. Unusual commodities or mineralisation types (eg submarine nodules) may warrant disclosure of detailed information. 	<ul style="list-style-type: none"> Soil samples where collected from 20cm depth from a hand dug hole and sieved to - 210um particle size. 100-300g of sample was collected.
Drilling techniques	<ul style="list-style-type: none"> Drill type (eg core, reverse circulation, open-hole hammer, rotary air blast, auger, Bangka, sonic, etc) and details (eg core diameter, triple or standard tube, depth of diamond tails, face-sampling bit or other type, whether core is oriented and if so, by what method, etc). 	<ul style="list-style-type: none"> NA
Drill sample recovery	<ul style="list-style-type: none"> Method of recording and assessing core and chip sample recoveries and results assessed. Measures taken to maximise sample recovery and ensure representative nature of the samples. Whether a relationship exists between sample recovery and grade and whether sample bias may have occurred due to preferential loss/gain of fine/coarse material. 	<ul style="list-style-type: none"> NA
Logging	<ul style="list-style-type: none"> Whether core and chip samples have been geologically and geotechnically logged to a level of detail to support appropriate Mineral Resource estimation, mining studies and metallurgical studies. Whether logging is qualitative or quantitative in nature. Core (or costean, channel, etc) photography. The total length and percentage of the relevant intersections logged. 	<ul style="list-style-type: none"> All soil samples have a qualitative description of the landform at the sample site.

Criteria	JORC Code explanation	Commentary
Sub-sampling techniques and sample preparation	<ul style="list-style-type: none"> • <i>If core, whether cut or sawn and whether quarter, half or all core taken.</i> • <i>If non-core, whether riffled, tube sampled, rotary split, etc and whether sampled wet or dry.</i> • <i>For all sample types, the nature, quality and appropriateness of the sample preparation technique.</i> • <i>Quality control procedures adopted for all sub-sampling stages to maximise representivity of samples.</i> • <i>Measures taken to ensure that the sampling is representative of the in situ material collected, including for instance results for field duplicate/second-half sampling.</i> • <i>Whether sample sizes are appropriate to the grain size of the material being sampled.</i> 	<ul style="list-style-type: none"> • Soil samples were sieved to -210um and collected a 100-300g sample. The landscape is a striped outcropping terrain, no samples were collected from creeks or flood banks. Samples are expected to approximately represent <i>in situ</i> material.
Quality of assay data and laboratory tests	<ul style="list-style-type: none"> • <i>The nature, quality and appropriateness of the assaying and laboratory procedures used and whether the technique is considered partial or total.</i> • <i>For geophysical tools, spectrometers, handheld XRF instruments, etc, the parameters used in determining the analysis including instrument make and model, reading times, calibrations factors applied and their derivation, etc.</i> • <i>Nature of quality control procedures adopted (eg standards, blanks, duplicates, external laboratory checks) and whether acceptable levels of accuracy (ie lack of bias) and precision have been established.</i> 	<ul style="list-style-type: none"> • Soil samples were analysed for gold by Aqua regia at ALS Perth.
Verification of sampling and assaying	<ul style="list-style-type: none"> • <i>The verification of significant intersections by either independent or alternative company personnel.</i> • <i>The use of twinned holes.</i> • <i>Documentation of primary data, data entry procedures, data verification, data storage (physical and electronic) protocols.</i> • <i>Discuss any adjustment to assay data.</i> 	<ul style="list-style-type: none"> • Standard data entry templates were completed in the field in the Qfield app on an android tablet. This data was uploaded to company servers each evening and stored in the company database,
Location of data points	<ul style="list-style-type: none"> • <i>Accuracy and quality of surveys used to locate drill holes (collar and down-hole surveys), trenches, mine workings and other locations used in Mineral Resource estimation.</i> • <i>Specification of the grid system used.</i> • <i>Quality and adequacy of topographic control.</i> 	<ul style="list-style-type: none"> • Sample locations were determined by hand held GPS with an error of ~2-5m. • GDA 2020 MGA Zone 51
Data spacing and distribution	<ul style="list-style-type: none"> • <i>Data spacing for reporting of Exploration Results.</i> • <i>Whether the data spacing and distribution is sufficient to establish the degree of geological and grade continuity appropriate for the Mineral Resource and Ore Reserve estimation procedure(s) and classifications applied.</i> • <i>Whether sample compositing has been applied.</i> 	<ul style="list-style-type: none"> • Soil samples were collected on a regular 80m by 40m grid.

For personal use only

Criteria	JORC Code explanation	Commentary
Orientation of data in relation to geological structure	<ul style="list-style-type: none"> Whether the orientation of sampling achieves unbiased sampling of possible structures and the extent to which this is known, considering the deposit type. If the relationship between the drilling orientation and the orientation of key mineralised structures is considered to have introduced a sampling bias, this should be assessed and reported if material. 	<ul style="list-style-type: none"> Soil lines were oriented north-south which is approximately orthogonal to the east-west trend of the structural grain of the region.
Sample security	<ul style="list-style-type: none"> The measures taken to ensure sample security. 	<ul style="list-style-type: none"> Independent transport contractors transported the samples to the laboratory.
Audits or reviews	<ul style="list-style-type: none"> The results of any audits or reviews of sampling techniques and data. 	<ul style="list-style-type: none"> Available data has been reviewed by company geologist.

Section 2 Reporting of Exploration Results

(Criteria listed in the preceding section also apply to this section).

Criteria	JORC Code explanation	Commentary
Mineral tenement and land tenure status	<ul style="list-style-type: none"> Type, reference name/number, location and ownership including agreements or material issues with third parties such as joint ventures, partnerships, overriding royalties, native title interests, historical sites, wilderness or national park and environmental settings. The security of the tenure held at the time of reporting along with any known impediments to obtaining a licence to operate in the area. 	<ul style="list-style-type: none"> The Bush Chook Project encompassed part of the Bonney Downs Pastoral Lease, The Palyku and Palyku #2 and Nyamal Palyku Native Title groups, and some miscellaneous licences owned by AIM Mining. It is expected that agreements will be reached with these parties to enable the tenements to be granted and exploration work to occur.
Exploration done by other parties	<ul style="list-style-type: none"> Acknowledgment and appraisal of exploration by other parties. 	<ul style="list-style-type: none"> The project has predominantly been explored for gold mineralisation using a variety of surface techniques which have outlined several anomalous and mineralised zones within the project. Adequate drill testing of these areas has not taken place.
Geology	<ul style="list-style-type: none"> Deposit type, geological setting and style of mineralisation. 	<ul style="list-style-type: none"> Turbidite-hosted orogenic gold and gold-antimony deposits are the principal target. These are hosted within the Mesoproterozoic Mosquito Creek basin of the Pilbara Craton. Examples of mineralisation in the region include the Blue Spec, Gold Spec, and Golden Eagle deposits.
Drill hole Information	<ul style="list-style-type: none"> A summary of all information material to the understanding of the exploration results including a tabulation of the following information for all Material drill holes: <ul style="list-style-type: none"> easting and northing of the drill hole collar elevation or RL (Reduced Level – elevation above sea level in metres) of the drill hole collar dip and azimuth of the hole down hole length and interception depth hole length. If the exclusion of this information is justified on the basis that the information is not Material and this exclusion does not detract from the understanding of the report, the Competent Person should clearly explain why this is the case. 	<ul style="list-style-type: none"> Collar and trench sample locations are provided in the tables within this document.
Data aggregation methods	<ul style="list-style-type: none"> In reporting Exploration Results, weighting averaging techniques, maximum and/or minimum grade truncations (eg cutting of high grades) and cut-off grades are usually Material and should be stated. Where aggregate intercepts incorporate short lengths of high grade results and longer lengths of low grade results, the 	<ul style="list-style-type: none"> The cut off for the significant trench, channel, RC, and RAB intervals was done using >0.2ppm Au with no internal dilution. Not applicable.

Criteria	JORC Code explanation	Commentary
	<p>procedure used for such aggregation should be stated and some typical examples of such aggregations should be shown in detail.</p> <ul style="list-style-type: none"> The assumptions used for any reporting of metal equivalent values should be clearly stated. 	<ul style="list-style-type: none"> No metal equivalents have been reported.
Relationship between mineralisation widths and intercept lengths	<ul style="list-style-type: none"> These relationships are particularly important in the reporting of Exploration Results. If the geometry of the mineralisation with respect to the drill hole angle is known, its nature should be reported. If it is not known and only the down hole lengths are reported, there should be a clear statement to this effect (eg 'down hole length, true width not known'). 	<ul style="list-style-type: none"> Not applicable. Shear zone dip and dip direction is reported in the body of the text. Not applicable.
Diagrams	<ul style="list-style-type: none"> Appropriate maps and sections (with scales) and tabulations of intercepts should be included for any significant discovery being reported. These should include, but not be limited to a plan view of drill hole collar locations and appropriate sectional views. 	<ul style="list-style-type: none"> Plan-view maps are presented showing the location of the project, the sample locations and the gold results.
Balanced reporting	<ul style="list-style-type: none"> Where comprehensive reporting of all Exploration Results is not practicable, representative reporting of both low and high grades and/or widths should be practiced to avoid misleading reporting of Exploration Results. 	<ul style="list-style-type: none"> Not applicable
Other substantive exploration data	<ul style="list-style-type: none"> Other exploration data, if meaningful and material, should be reported including (but not limited to): geological observations; geophysical survey results; geochemical survey results; bulk samples – size and method of treatment; metallurgical test results; bulk density, groundwater, geotechnical and rock characteristics; potential deleterious or contaminating substances. 	<ul style="list-style-type: none"> GSWA geological maps, magnetic and gravity data have been used to assist the interpretation of the target areas.
Further work	<ul style="list-style-type: none"> The nature and scale of planned further work (eg tests for lateral extensions or depth extensions or large-scale step-out drilling). Diagrams clearly highlighting the areas of possible extensions, including the main geological interpretations and future drilling areas, provided this information is not commercially sensitive. 	<ul style="list-style-type: none"> Follow up work will include geological mapping, rock chip sampling and first pass drilling to further define the depth extent of mineralisation/anomalism observed at surface.

For personal use only