

26 May 2026 - ASX Announcement

# BLEG STREAM SEDIMENT SAMPLING PROGRAMS COMPLETED ACROSS THE SOUTHWEST SIGUIRI

## Highlights

- The Company has completed Bulk Leach Extractable Gold (BLEG) stream sediment sampling programs covering more than 687km<sup>2</sup> of drainage catchments across the Dalaban, Woussoubadou, Branama, Doufila, Moussaya and Yarakoyura Projects.
- 143 Samples have been delivered to Bureau Veritas Laboratories in Perth, with assays pending.
- BLEG is a proven reconnaissance geochemical technique designed to detect gold anomalism across large areas while reducing the impact of nuggety gold.
- The program will be used to rapidly rank catchments, identify coherent gold and pathfinder anomalies, and generate targets for follow-up mapping, infill geochemistry, auger sampling, geophysics and ultimately drill testing.
- DeSoto's exploration work is the first systematic exploration completed across the project area, with the program being supervised by a specialist BLEG technician, Mr Benoit Sanon (Figure 1), who managed similar programs previously for Predictive Discovery (ASX:PDI).
- The Dalaban, Woussoubadou, Branama, Doufila, Moussaya and Yarakoyura Projects are located adjacent to DES Alamakono and Moiko concessions, and along strike and within the "Siguiiri Gold Mineralisation Trend", a favourable structural and geological gold corridor which includes AngloGold Ashanti's Siguiiri Mine (5.28Moz)<sup>1</sup> and Asara's Resources' (ASX:AS1) Kada Project (0.9Moz)<sup>2</sup>.



Figure 1 – BLEG sample collection at the Moussaya (Left), with sample preparation and drying being completed by specialist DeSoto BLEG technician Benoit Sanon (middle and right).

<sup>1</sup>AngloGold Ashanti plc, 2025 Mineral Resource and Mineral Reserve Report, 2026.

<sup>2</sup>AS1 Mineral Resource reported on 1st October, 2023.



DeSoto Resources Limited (ASX:DES) (“DES” or the “Company”) is pleased to provide an update on BLEG stream sediment sampling programs covering the Dalaban, Woussoubadou, Branama, Doufila, Moussaya and Yarakoyura Projects (Figure. 2).

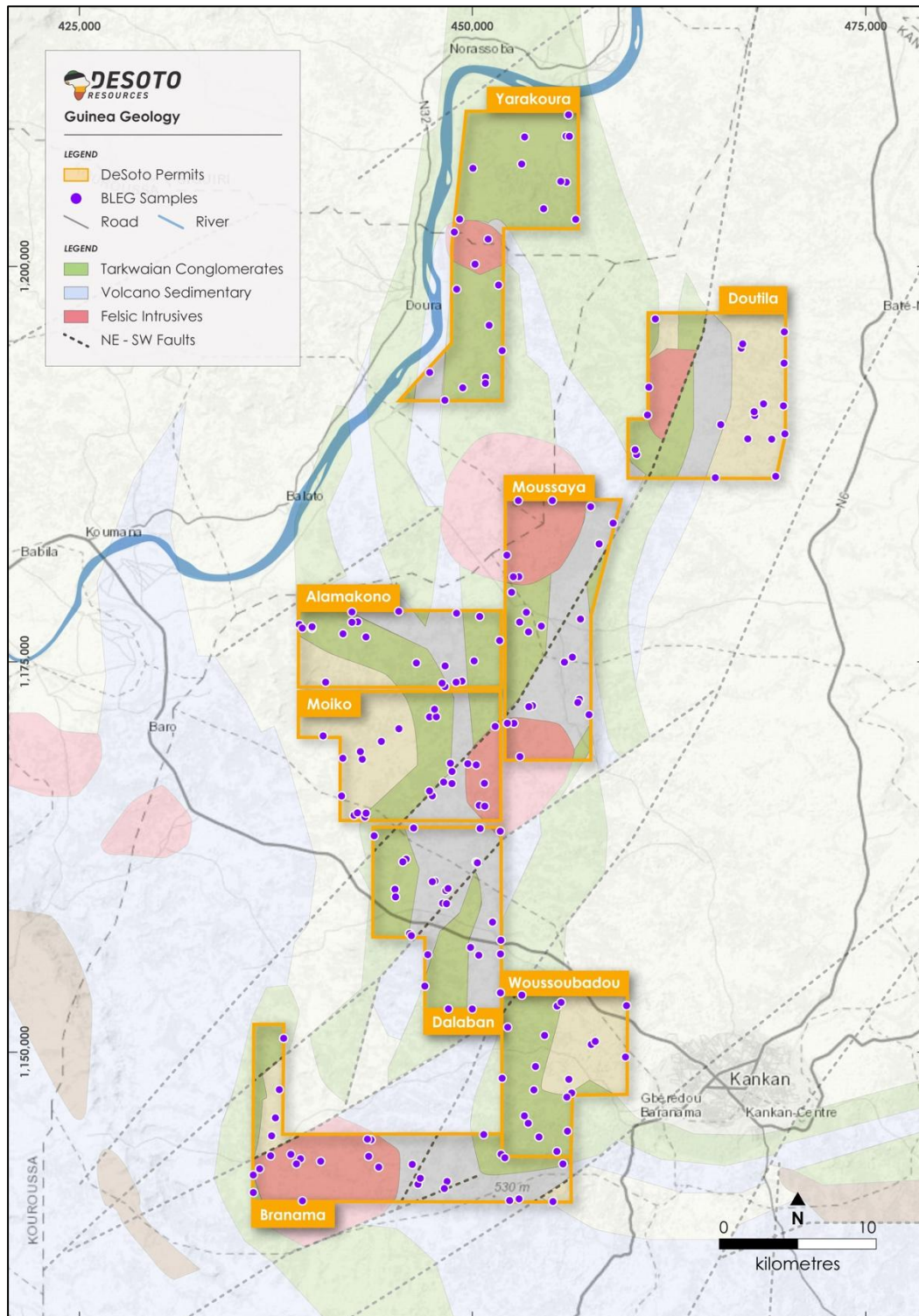


Figure 2 - Desoto's tenements BLEG stream sampling program underlain by geological interpretation of N-S belt with interpreted Tarkwaian conglomerates cut by NE-SW trending faults and interpreted granitic bodies. (Modified from Lebrun et al 2017.1).<sup>3</sup>

<sup>3</sup>Lebrun, E., Thébaud, N., Miller, J., Ulrich, S., Bourget, J., and Terblanche, O. 2016. Geochronology and lithostratigraphy of the Sigiri District: Implications for gold mineralisation in the Sigiri Basin (Guinea, West Africa). Precambrian Research 274 (2016) 136–160. <http://dx.doi.org/10.1016/j.precamres.2015.10.011>



The Company's Newmont-style BLEG stream sediment sampling programs are designed around drainage catchments rather than a regular square grid. The objective of the program is to systematically sample first and second-order drainages across the Company's large tenement package and use gold and pathfinder geochemistry to identify catchments with elevated gold potential for more detailed follow-up exploration.

The survey is designed to detect elements with a range of physical and chemical properties, including variations in density and solubility. As such, samples are collected from very fine-grained clay and silt material in relatively low-energy fluvial environments. Sampling is undertaken at an average density of approximately one sample per 5km<sup>2</sup>, with samples collected from active first or second-order streams, typically around 60m upstream from a confluence.

The Company acquired the Dalaban, Woussoubadou, Branama, Doutila, Moussaya and Yarakoyura Reconnaissance Authorisations in early 2026. The projects are located adjacent to the DES Alamakono and Moiko concessions, and close to Kankan, Guinea's second-largest city after the capital, Conakry, and are readily accessible from the Company's exploration headquarters in Kankan.

The West African Exploration Initiative (WAXI)<sup>4</sup>, a collaborative research program undertaken between 2006 and 2025, has significantly advanced the geological understanding of the Siguiri Basin and the structural controls on gold deposition. DeSoto's Dalaban, Woussoubadou, Branama, Doutila, Moussaya and Yarakoyura Projects are centrally located within the basin, along a structurally defined corridor that has seen limited modern exploration.

Upon receipt of results, the Company will undertake targeted regolith mapping, soil sampling and rock-chip sampling to identify mineralised structural positions and prospective host rocks, including felsic intrusive units.

Any geochemical anomalies generated from this work will be prioritised for follow-up exploration, including more detailed surface sampling, power auger drilling, aircore drilling, RC drilling and airborne geophysical surveys.

The Company is currently progressing the conversion of its Reconnaissance Authorisations into Exploration Permits.

### **Strategic Land Position in the Siguiri Basin**

Since February 2025, the Company has acquired approximately 1,300km<sup>2</sup> of highly prospective gold tenure across more than 22 Reconnaissance Authorisations and Exploration Permits in the Siguiri Basin.

The Company is applying a strategic, basin-scale approach to exploration, focused on developing a broad structural architecture interpretation to support ongoing ground selection, target generation and exploration prioritisation.

The Siguiri Basin forms part of the broader Birimian Gold Belt, within the West African Craton. The craton extends across West Africa and is recognised as one of the world's most richly endowed gold provinces.

<sup>4</sup><https://www.cet.edu.au/project/waxi/>



Gold deposits across the region occur in a range of orogenic and intrusion-related styles, reflecting the diversity of host rocks, including sedimentary sequences, mafic intrusions, volcanic rocks and granitoids.

The Company's acquisition strategy has established DeSoto as one of the largest landholders in the Siguiri Basin, with the fifth-largest land package by area. Additional target areas continue to be screened using a mineral systems approach developed by Chairman Paul Roberts and Non-Executive Director Dr Barry Murphy.

This approach is designed to identify structurally favourable positions, prospective host rocks and underexplored corridors capable of hosting significant gold mineralisation.

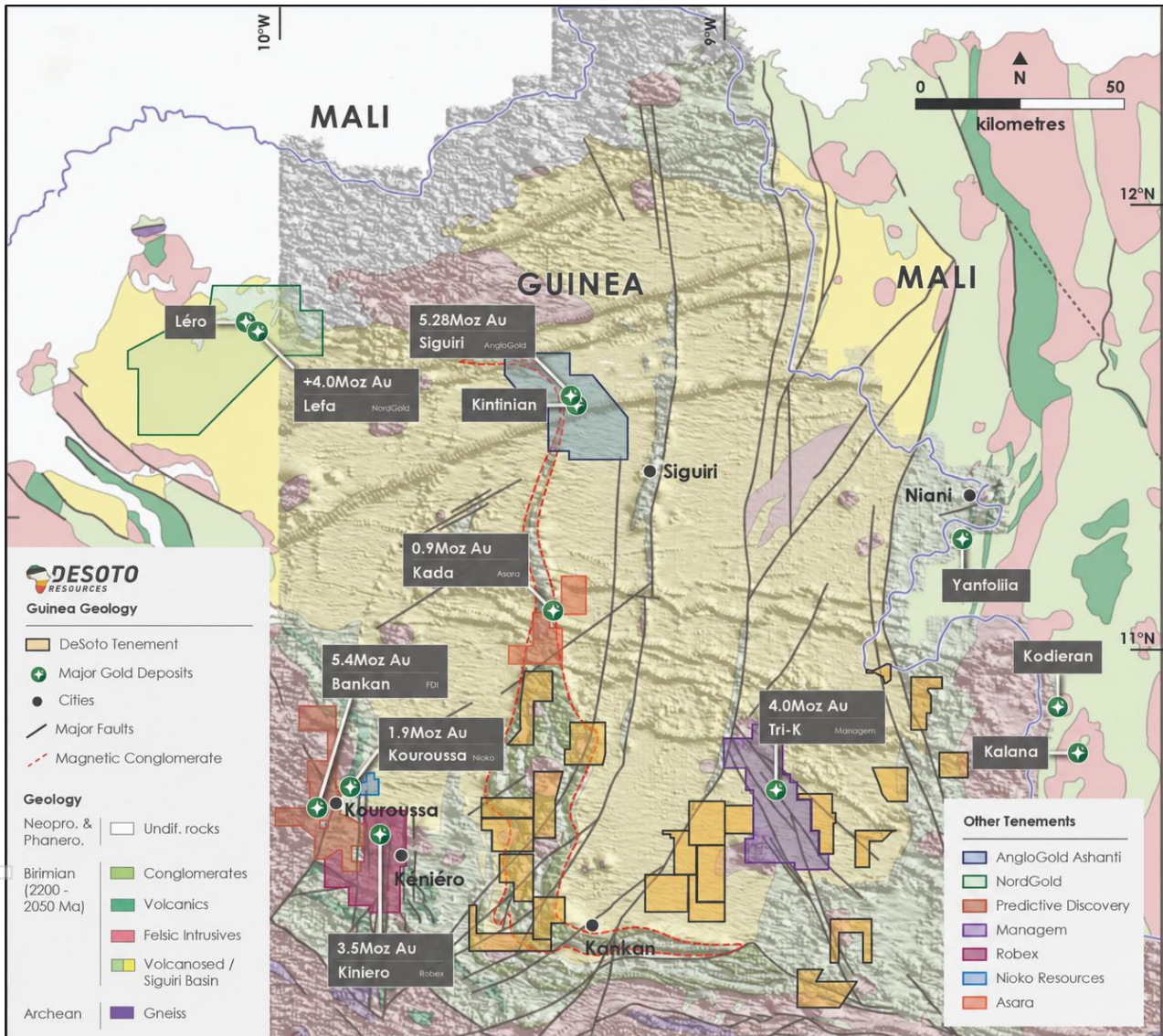


Figure 3: DeSoto's portfolio of Applications, Reconnaissance and Exploration Authorisations, located in the Siguiri Basin, Guinea<sup>5</sup>.

To the extent that this announcement contains references to prior exploration results which have been cross referenced to previous market announcements made by the Company,

<sup>5</sup>DeSoto Resources, public company disclosures and regional geology datasets. Surrounding deposit mineral resources are shown for regional context only, are not attributable to DeSoto, and may have been reported under different reporting codes, assumptions and cut-off grades. Nearby mineralisation is not necessarily indicative of mineralisation on DeSoto's tenure.



unless explicitly stated, no new information is contained. Full results and their locations can be found in previously released announcements as referenced in this announcement.

The Company confirms that it is not aware of any new information or data that materially affect the information included in the relevant prior market announcements. The Company is currently in the process of converting the Reconnaissance Authorisations to Exploration Permits.

**-END-**

This release is authorised by the Board of Directors of DeSoto Resources Limited.

For further information visit our website at [Desotoresources.com](http://Desotoresources.com) or contact:

Chris Swallow

**Managing Director**

P: +61 412 174 882

E: [cs@desotoresources.com](mailto:cs@desotoresources.com)

### **COMPETENT PERSONS STATEMENT**

The information in this report that relates to exploration results is based on and fairly represents information and supporting documentation prepared by Ms Rebecca Morgan. Ms Morgan is a consultant to the company, is a member of the Australian Institute of Geoscientists and has sufficient experience of relevance to the styles of mineralisation and types of deposits under consideration, and to the activities undertaken to qualify as Competent Persons as defined in the 2012 Edition of the Joint Ore Reserves Committee (JORC) Australasian Code for Reporting of Exploration Results, Mineral Resources and Ore Reserves. Ms Morgan consents to the inclusion in this report of the matters based on this information in the form and context in which they appear.