

ASX Release – 28 May 2026

South Australia Exploration Update

- **Yogi drill core cut and samples in laboratory pending assays**
- **Soil sampling to commence at the Challenger West Gold Project supporting drill target generation and refinement**
- **Challenger West neighbours multiple gold deposits including the 1.2Moz Challenger Gold Mine**

Taiton Resources Limited (“**Taiton**” or “**Company**”) wishes to provide the following updates.

Highway Drilling Program

Taiton advises that it has now processed the core and submitted a nominal two hundred and fifty (250) samples for multi-element analysis at ALS laboratory in Adelaide. The results are expected in three to four weeks.

The core submitted was from the recently completed deep diamond hole drilled at Yogi prospect (**Figure 1**) testing a 6mGal gravity anomaly¹.

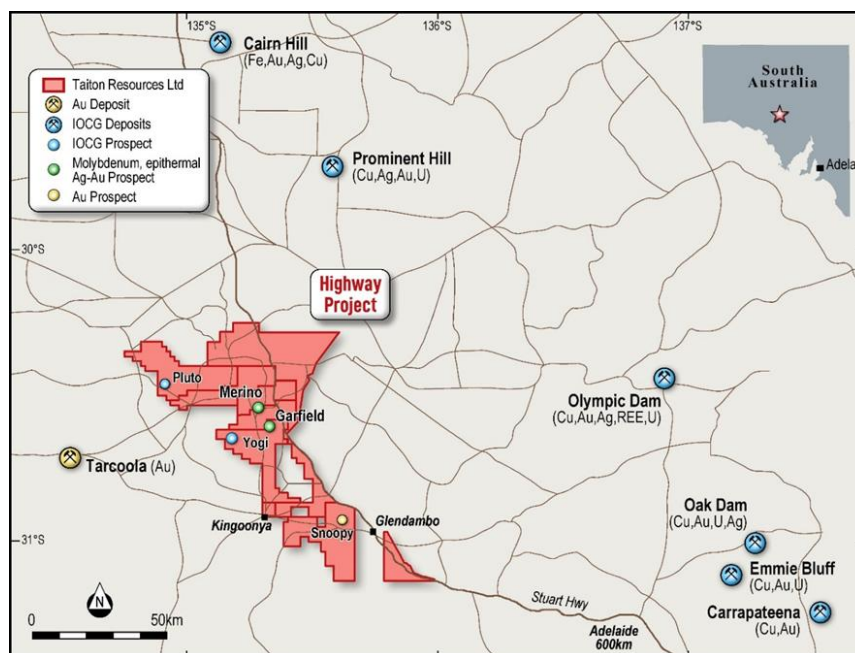


Figure 1: Location of Highway project in South Australia.

For personal use only

Challenger West

Taiton to commence staged surface geochemical sampling in June within areas on the margin of gravity anomalism where the majority of gold deposits have been discovered to date (**Figure 2**).

To accelerate target definition for potential drilling Taiton will focus on areas where historical broad spaced calcrete sampling (**SARIG**) returned elevated gold results coincident with interpreted structures from geophysics.

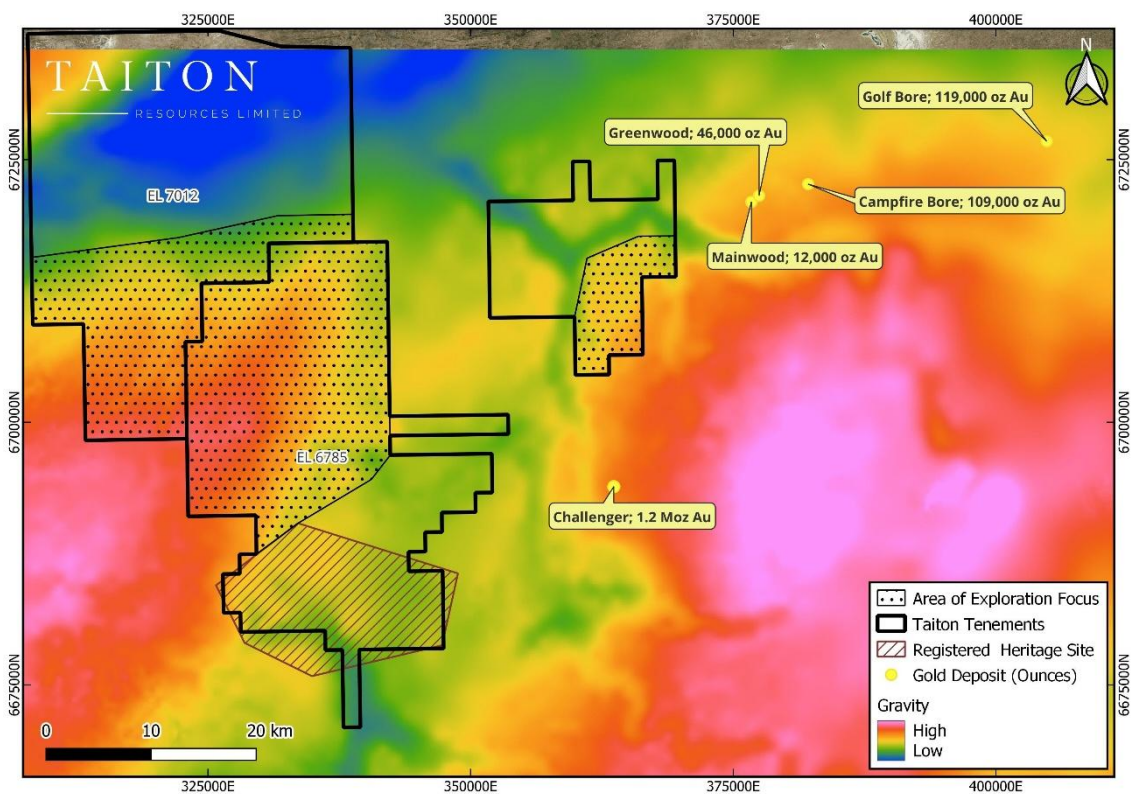


Figure 2. Taiton tenements underlain by gravity image. Note position of gold deposits within the shadow of a gravity anomaly (magenta) and comparable response within Taiton tenements. Gold Resources².

About Challenger West Project

Challenger West project commences 10km west of the 1.2 Moz Challenger deposit where the mine infrastructure (process plant and camp) has been on care and maintenance since 2018 and is now under review by Barton Gold Holdings Limited (ASX:BGD) for reinstatement³. Challenger West covers the

For personal use only



Christie Gneiss which includes a range of lithologies including meta-carbonate, magnetite-rich iron formation and clastic metasedimentary rocks.

The style of gold mineralisation being targeted is based on the Challenger deposit where mineralisation occurs in deformed quartz veins within narrow plunging lodes hosted by metapelites of the Christie Gneiss. Challenger has been recognised as an early orogenic gold deposit that has been subject to later deformation and metamorphism that resulted in the remobilisation of gold before concentrating into a series of dilatational structures trending north-northeast. Subsequent lower temperature overprinting is interpreted to have occurred.

Executive Director David Low, commented,

“We look forward to informing the market on the assay results from the recent deep drill hole at Yogi and to getting back out to Challenger West.

The Challenger West project is part of a broader highly prospective area which has seen recent gold exploration success from surrounding explorers.”

This announcement has been approved for release by the Board of Taiton.

For further information please contact:

David Low

Executive Director

E: david.low@taiton.com.au

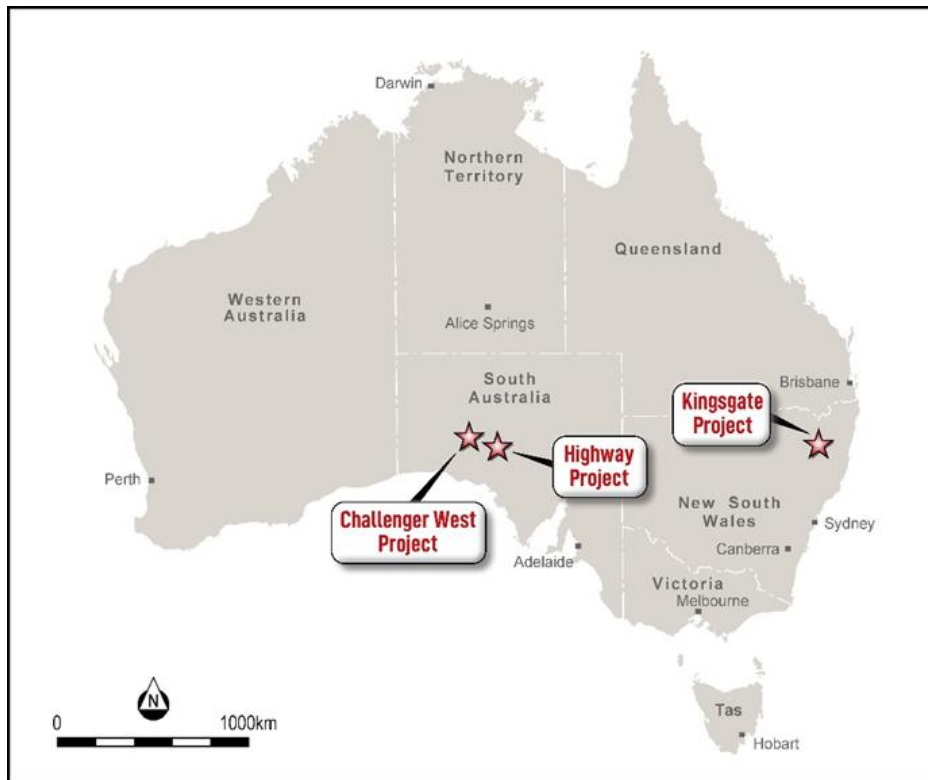
P: +61 (3) 9101 8542



About Taiton Resources Limited

Taiton Resources Limited (ASX: T88) is an early-stage mineral exploration and development company with a portfolio of projects across South Australia and New South Wales comprising the following:

- Highway Copper-Gold Project** – Covers ~2,930km² of tenure in the highly prospective Gawler Craton host to world class IOCG deposits such as Olympic Dam, Carrapateena and Prominent Hill.
- Challenger West Gold-Uranium Project** – ~1,858km² tenement package neighbouring the 1.2Moz Challenger Gold Mine and 1.6Moz Tunkillia Gold Project, with strong potential for gold and paleochannel uranium deposits.
- Kingsgate Molybdenum-Bismuth-Silica Project** – A historical high-grade molybdenum-bismuth mining district with over 100 known mineralised pipes and prior production.



Taiton Resources Limited (ASX: T88) project locations.

References

1. ASX Release – 18th September 2024, Gravity Anomalism up to 6 mGal Solidifies Support for IOCG Targets at Highway Project
2. Marmota. ASX Release 9th April 2024, New Golden Moon JV to grow Gawler gold resources
3. Barton Gold Holdings Limited ASX Release dated 21st July 2025 - Central Gawler Mill Refurbishment Estimated at A\$26m. Preliminary evaluation confirms low-cost pathway to production.

COMPETENT PERSON STATEMENT

The information in this report that relates to exploration results and geological data for the Challenger West is based on information generated and compiled by Shane Tomlinson, who is a member of the Australian Institute of Geoscientists (AIG) and a Technical Director of Taiton Resources Limited.

Shane Tomlinson has sufficient experience that is relevant to the styles of mineralisation and types of deposits under consideration and to the activities being undertaken to qualify as Competent Person as defined in the 2012 Edition of the “Australasian Code for Reporting of Exploration Results, Mineral Resources and Ore Reserves”. Mr Tomlinson consents to the inclusion in this announcement of the matters based on this information in the form and context in which it appears.

FORWARD LOOKING INFORMATION:

This announcement contains forward-looking statements. Wherever possible, words such as “intends”, “expects”, “scheduled”, “estimates”, “anticipates”, “believes”, and similar expressions or statements that certain actions, events or results “may”, “could”, “would”, “might” or “will” be taken, occur or be achieved, have been used to identify these forward-looking statements.

Although the forward-looking statements contained in this announcement reflect management’s current beliefs based upon information currently available to management and based upon what management believes to be reasonable assumptions, Taiton cannot be certain that actual results will be consistent with these forward-looking statements. A number of factors could cause events and achievements to differ materially from the results expressed or implied in the forward-looking statements. These factors should be considered carefully, and prospective investors should not place undue reliance on the forward-looking statements.

Forward-looking statements necessarily involve significant known and unknown risks, assumptions and uncertainties that may cause actual results, events, prospects and opportunities to differ materially from those expressed or implied by such forward-looking statements. Although Taiton has attempted to identify important risks and factors that could cause actual actions, events or results to differ materially



from those described in forward-looking statements, there may be other factors and risks that cause actions, events or results not to be anticipated, estimated or intended, including those risk factors discussed in Taiton's public filings.

There can be no assurance that the forward-looking statements will prove to be accurate, as actual results and future events could differ materially from those anticipated in such statements. Accordingly, prospective investors should not place undue reliance on forward-looking statements. Any forward-looking statements are made as of the date of this announcement, and Taiton assumes no obligation to update or revise them to reflect new events or circumstances, unless otherwise required by law.

For personal use only