

AGM  
PRESENTATION

**Vita**  
RESOURCES NL

## One Goal

Deliver shareholder value through disciplined project evaluation, execution and advancement

**Nature of this document:** The purpose of this presentation is to provide general information about Vita Resources NL (the 'Company'). Unless otherwise stated herein, the information in this presentation is based on the Company's own information and estimates. In attending this presentation or viewing this document you agree to be bound by the following terms and conditions.

**Not an offer:** This presentation is for information purposes only and does not constitute or form any part of any offer or invitation to sell or issue, or any solicitation of any offer to purchase or subscribe for, any securities in the Company in any jurisdiction. This presentation and its contents must not be distributed, transmitted or viewed by any person in any jurisdiction where the distribution, transmission or viewing of this document would be unlawful under the securities or other laws of that or any other jurisdiction.

This presentation is not considered a recommendation by the Company or any of its affiliates, directors or officers that any recipient invest in the Company, nor does it constitute investment, accounting, financial, legal or tax advice.

**Not financial product advice:** This presentation does not take into account the individual investment objectives, financial situation and particular needs of each of the Company's Shareholders. You may wish to seek independent financial and taxation advice before making any decision in respect of this presentation. Neither the Company nor any of its related bodies corporate is licensed to provide financial product advice in respect of the Company's securities or any other financial products.

**Forward-looking statements:** Certain statements in the presentation are or may be "forward-looking statements" and represent the Company's intentions, projections, expectations or beliefs concerning, among other things, future operating and exploration results or the Company's future performance.

These forward-looking statements speak, and the presentation generally speaks, only at the date hereof. The projections, estimates and beliefs contained in such forward-looking statements necessarily involve known and unknown risks and uncertainties, and are necessarily based on assumptions, which may cause the Company's actual performance and results in future periods to differ materially from any express or implied estimates or projections. It is recognised that it is common practice for a company to comment on and discuss its exploration in terms of target size and type. All statements contained in this presentation by the Company which refer to the potential quantity and grade of the target is accompanied by a detailed explanation of the basis for the statement. The potential quantity and grade for the target is conceptual in nature and, there has been insufficient exploration to define a mineral resource and it is uncertain if further exploration will result in the determination of a mineral resource.

**Disclaimer:** No representation or warranty, express or implied, is made by the Company that the material contained in this presentation will be achieved or prove to be correct. Except for statutory liability which cannot be excluded, each of the Company, its directors, officers, employees, advisers and agents expressly disclaims any responsibility for the accuracy, fairness, sufficiency or completeness of the material contained in this presentation, or any opinions or beliefs contained in this document, and excludes all liability whatsoever (including in negligence) for any loss or damage which may be suffered by any person as a consequence of any information in this presentation or any error or omission there from. The Company is under no obligation to update or keep current the information contained in this presentation or to correct any inaccuracy or omission which may become apparent, or to furnish any person with any further information, unless required to do so by law. Any opinions expressed in the presentation are subject to change without notice. Recipients of this presentation should make their own, independent investigation and assessment of the Company its business, assets and liabilities, prospects and profits and losses, as well as the matters covered in this presentation. Independent expert advice should be sought before any decision based on an assessment of the Company is made.

**Unverified information:** This presentation may contain information (including information derived from publicly available sources) that has not been independently verified by the Company.

**Drilling Results and JORC:** The information in this report relates to the exploration results previously reported in ASX Announcements which are available on the Vita website at <https://www.vitaresources.au/investor-centre/asx-announcements/>. Vita is not aware of any new information or data that materially affects the information included in the ASX Announcements referenced in the attached slides, and all material assumptions and technical parameters underpinning the estimates continue to apply and have not materially changed. Currency: All currencies in this presentation are in Australian dollars unless otherwise stated.

The information in this report that relates to Mineral Resources for the ICE Copper-Gold Project in Canada is extracted from the ASX announcement 11 June 2025 and is available to view on the Company's website ([www.vitaresources.au](http://www.vitaresources.au)). The Company confirms that it is not aware of any new information or data that materially affects the information included in the original market announcement and that all material assumptions and technical parameters underpinning the estimates in the market announcement continue to apply and have not materially changed. The Company confirms that the form and context in which the Competent Person's findings are presented have not been materially modified from the original market announcement.

This release has been approved by the Vita Resources NL Board of Directors.

## New Leadership Delivers New Direction

- Leadership team appointed 2025 (previously Bastion Minerals Limited)
- Ongoing strategic review of existing projects while acquisition spotlight focuses on regional gold exploration assets
- Prioritised portfolio of five projects across three jurisdictions, focused on gold, copper and critical minerals
- **One goal:** Timely delivery of shareholder value through disciplined project evaluation, execution and advancement

### Gold

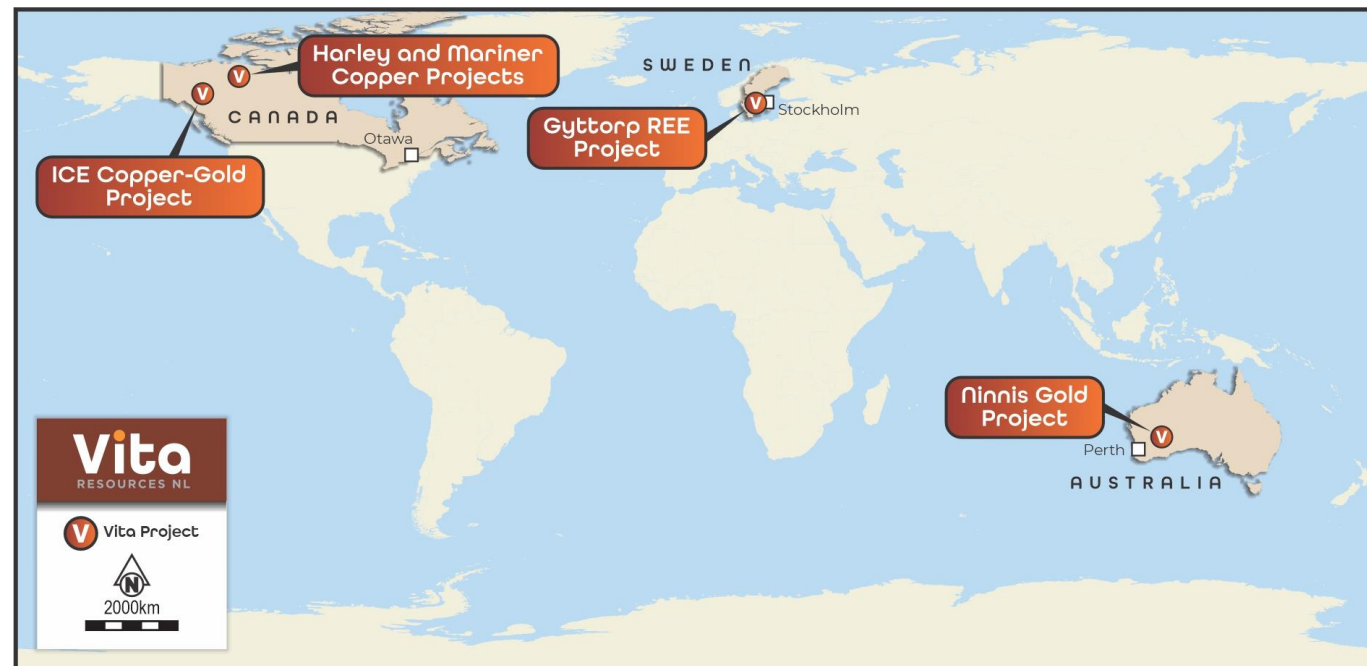
- **Ninnis Gold Project**, Northern Goldfields, WA
- **ICE Polymetallic Project**, Canada

### Copper

- **ICE Polymetallic Project**, Canada
- **Harley and Mariner Copper Projects**, Canada
- **Gyttorp REE and Copper Project**, Sweden

### Rare Earths

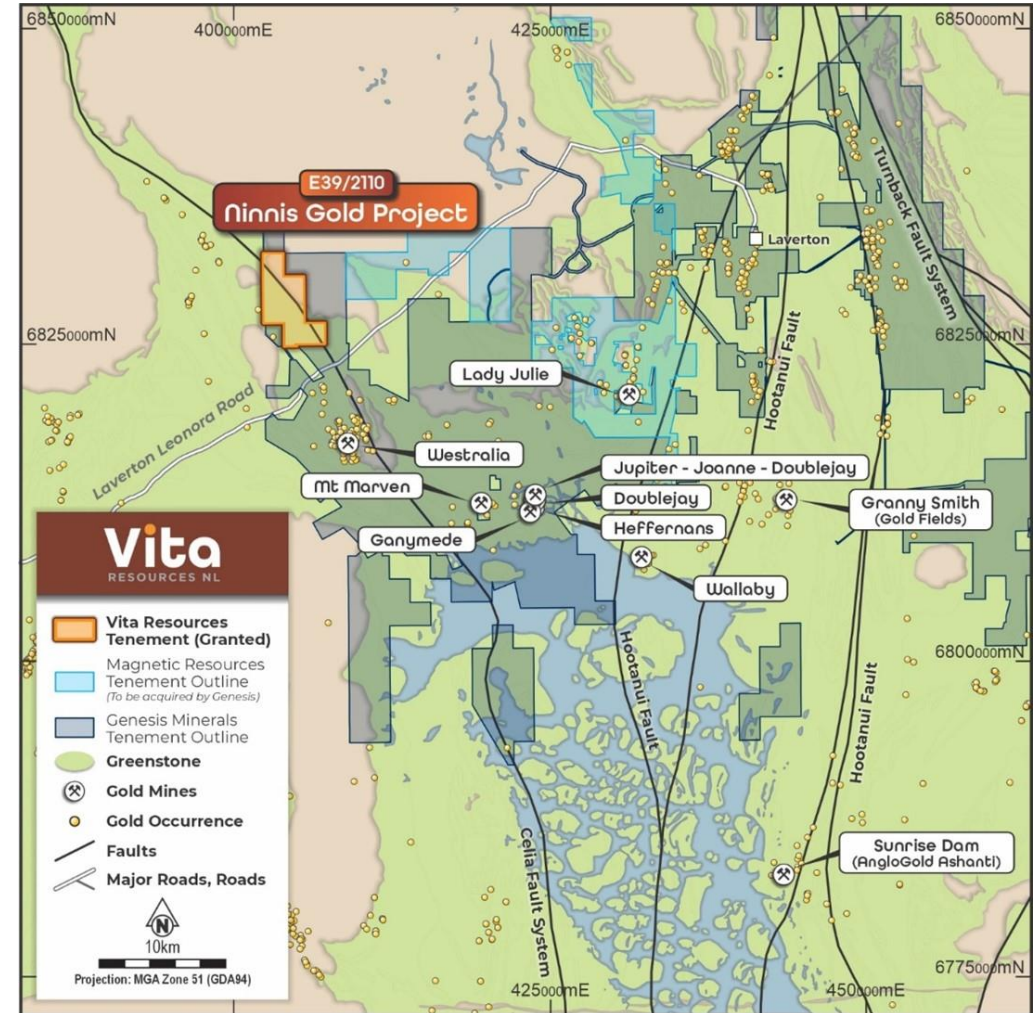
- **Gyttorp REE and Copper Project**, Sweden



## WA Gold Acquisition Strategy

### Acquired December 2025

- Early-stage 25km<sup>2</sup> exploration project located ~30km west of Laverton in the Northern Goldfields, WA
- ~6km north from Genesis Minerals’ (ASX: GMD) Mount Morgans Gold Mining Centre, near major gold deposits including
  - Sunrise Dam (MRE 0.97Moz gold)<sup>1</sup>
  - Granny Smith (2.389Moz gold)<sup>2</sup>
  - Magnetic Resources (ASX: MAU) Lady Julie Project (MRE 2.1Moz)<sup>3</sup>
- Historical work dates back several decades
- No modern exploration undertaken
- ~1,200-hole auger drilling maiden program underway



<sup>1</sup> Refer “Anglo Gold Ashanti Mineral Resource and Mineral Reserve Report 2024” [page 14]

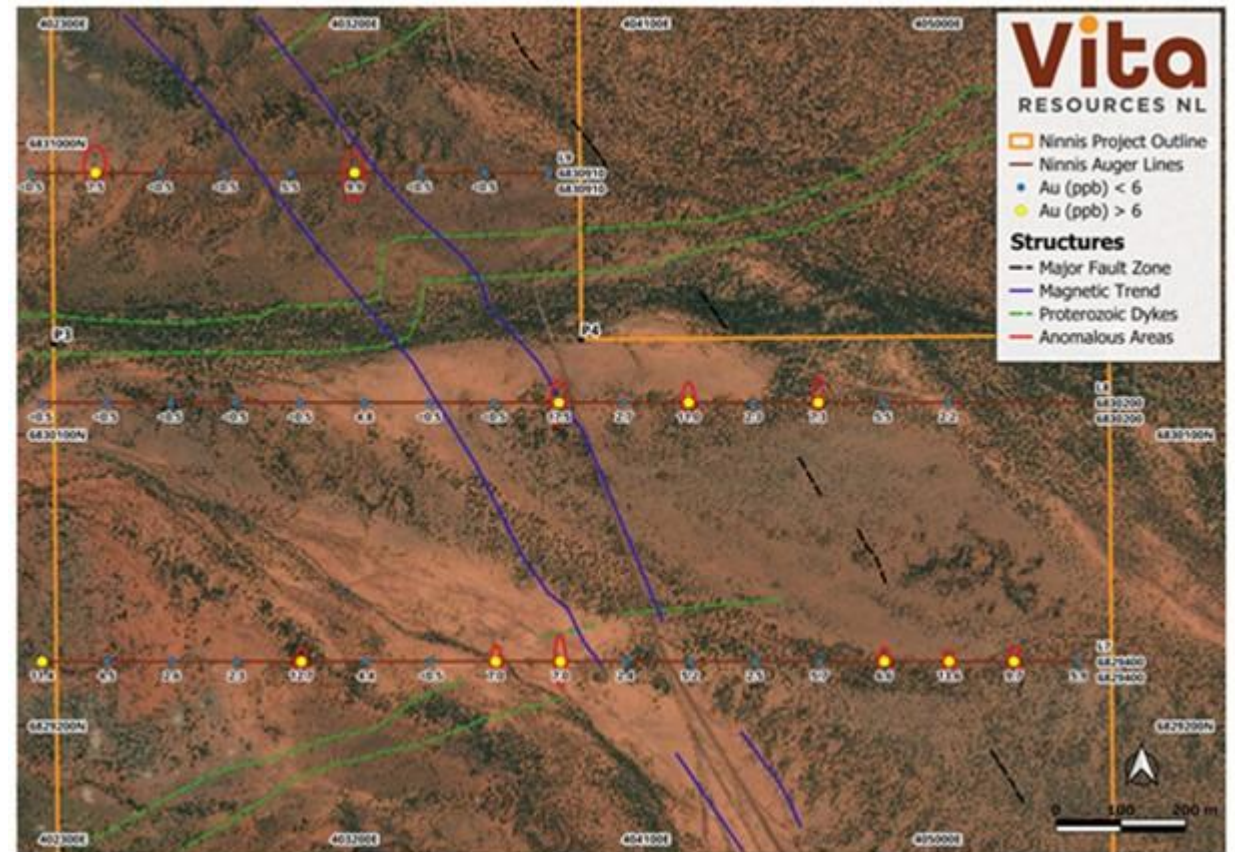
<sup>2</sup> Refer “Gold Fields Ltd Capital Markets Day presentation 2025”

<sup>3</sup> Refer MAU ASX Announcement 23 July 2025 “FEASIBILITY STUDY CONFIRMS ROBUST ECONOMICS FOR LADY JULIE”

## Maiden Drilling Programme

### First systematic follow-up of key gold targets

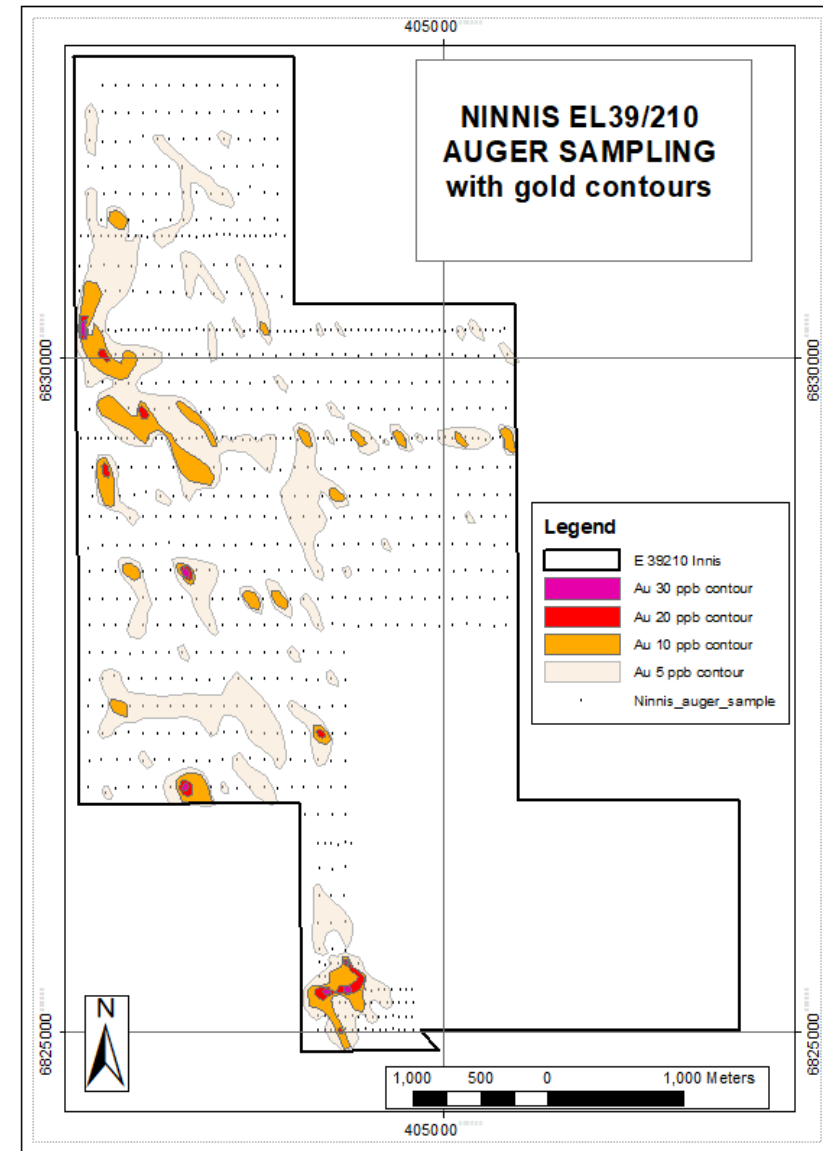
- ~1,200-hole auger drilling programme commenced in March 2026
- Focus on prior gold-in-soil anomalies
- Targeting two sub-parallel fault zones already linked to gold anomalism at Mt Morgans
- Additional targets include banded iron formation (BIF) extension and McKenzie Well trend
- Program aims to establish a defined pipeline of priority targets for follow-up drilling
- 850 holes drilled to date



## Multiple large gold in soil anomalies identified

### Maiden auger programme expanded to include incremental ~300 infill holes

- Multiple gold in soil anomalies identified in northern sector extending for 600m north-west
- Large and consistent gold in soil anomaly 500m north-south by 300m wide identified in southern sector
- Infill programme will target the two sub parallel fault zones successfully intersected in maiden programme
  - now identified as the major structural controls to the mineralised system
- GYRO Drilling to remobilise to site when practicable to complete the remaining auger holes and commence infill drilling



## Significant Potential

- Located in Yukon Territory, Canada covering mineral claims concentrated across 56km<sup>2</sup>
- **6.43 Mt @ 1.07% Cu JORC MRE<sup>1</sup>**
- Volcanic Hosted Massive Sulfide (VHMS) deposit
- Close to major infrastructure – less than 20km from a major provincial road, 65km from Ross River and 220km ENE of provincial capital Whitehorse
- More than 10,000m of historical drill core located on site
- 11 priority targets identified – potential for future discovery of additional zones of VHMS mineralisation
- Yukon Environmental and Socio-Economic Advisory Board (YESAB) recommendation supports five-year exploration programme, advancing project through permitting process<sup>2</sup>



<sup>1</sup> Refer VTA ASX Announcement 11 June 2025 “JORC MRE FOR ICE COPPER-GOLD PROJECT”

<sup>2</sup> Refer VTA ASX Announcement 19 March 2026 “ICE COPPER-GOLD PROJECT SECURES KEY YUKON RECOMMENDATION”

## JORC (2012) Mineral Resource Estimate

- Re-estimation using 2025 JORC (2012) **CONFIRMS** the original foreign historical resource tonnage and grade

**6.43 Mt @ 1.07% Cu JORC MRE**

- Indicated resources of 5.76 Mt @ 1.09% Cu
- Inferred resources of 0.67 Mt @ 0.83% Cu at a 0.3% cut-off

### Potential.....

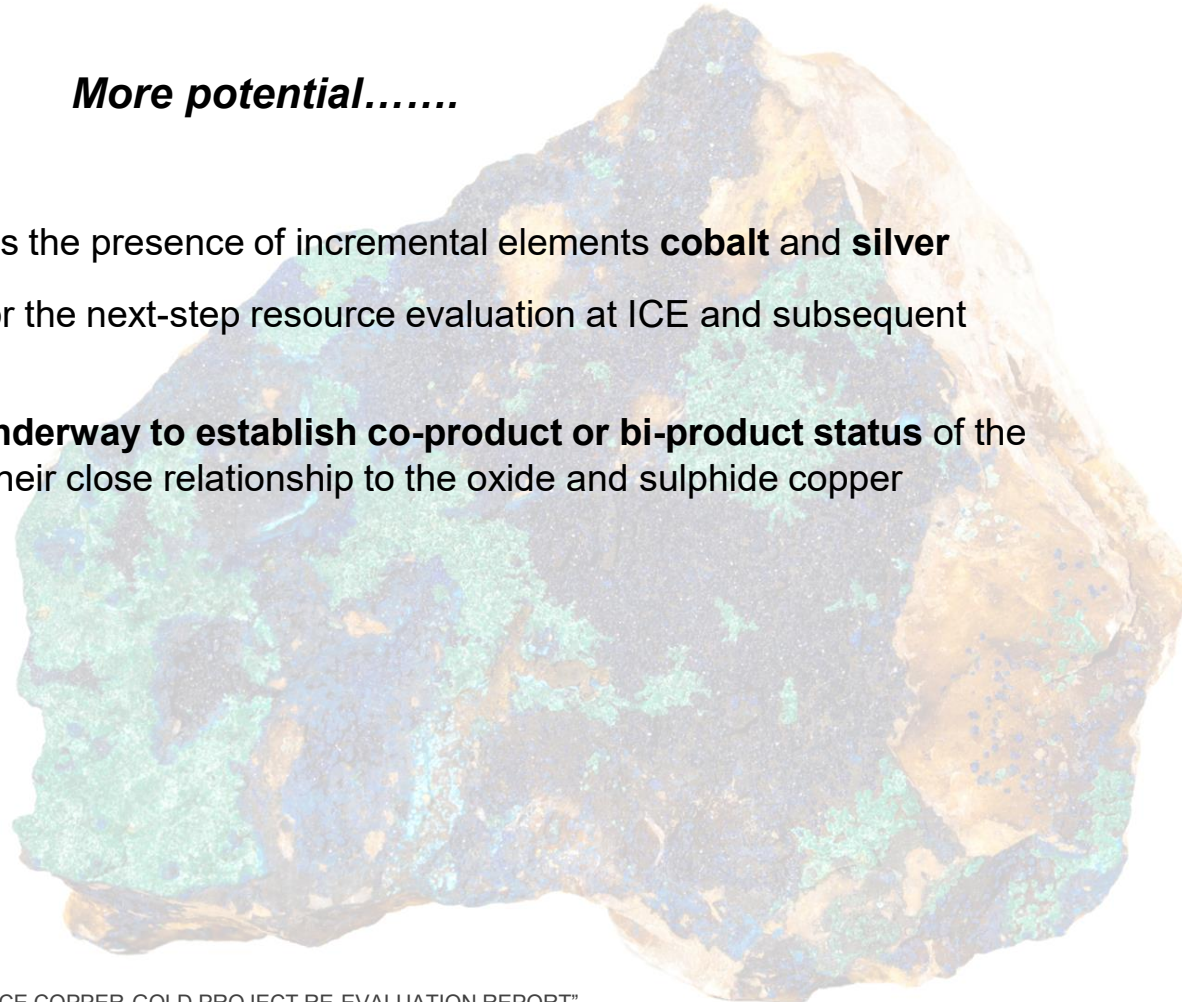
- Mineralisation commences at-surface (cropping-out) **potentially amenable to open pit extraction**
- Resource covers 115 drill holes, almost entirely <200m deep
- 92% of resources classified as INDICATED**
- <1% of the Project area has been drill tested – multiple geochemical / geophysical targets provide potential for discovery of additional mineralisation zones



## Commissioned Report Updates Project Status to Polymetallic<sup>1</sup>

*More potential.....*

- Commissioned report details the presence of incremental elements **cobalt** and **silver**
- Report provides direction for the next-step resource evaluation at ICE and subsequent exploration work
- Further **laboratory work underway to establish co-product or bi-product status** of the incremental elements and their close relationship to the oxide and sulphide copper mineralisation



- **Project re-evaluation program delivers first key result**
- **Independent economic geologist Nigel Maund reinterrogated assay and core data**
- **ICE updated from Copper-Gold to Polymetallic**

<sup>1</sup> Refer VTA ASX Announcement 17 February 2026 "ICE COPPER-GOLD PROJECT RE-EVALUATION REPORT"

## High-grade Copper and REE Exploration Opportunity

- Located in Sweden, a well-known mining jurisdiction
- Positioned within a >100km REE-enriched skarn belt, covering a large-scale copper and rare earth mineral system
- Over 200 mineral occurrences identified across the project
- High-grade copper and REE surface samples defined over 3km strike
- Multiple high-priority drill targets generated from historical and recent sampling
- REE anomalism confirmed with samples exceeding 1,000ppm TREO<sup>1</sup>
- Provides exposure to copper, REE and potential by-product critical metals
- Currently under evaluation for exposure to gold potential

<sup>1</sup> Refer ASX announcement 28<sup>th</sup> February 2024 "GYTTORP SWEDISH REE PROJECT OVER-RANGE COPPER RESULTS TO 8.5% Cu & 7.27% TREE+Y & FORWARD WORK PROGRAM"



## Harley Copper Project

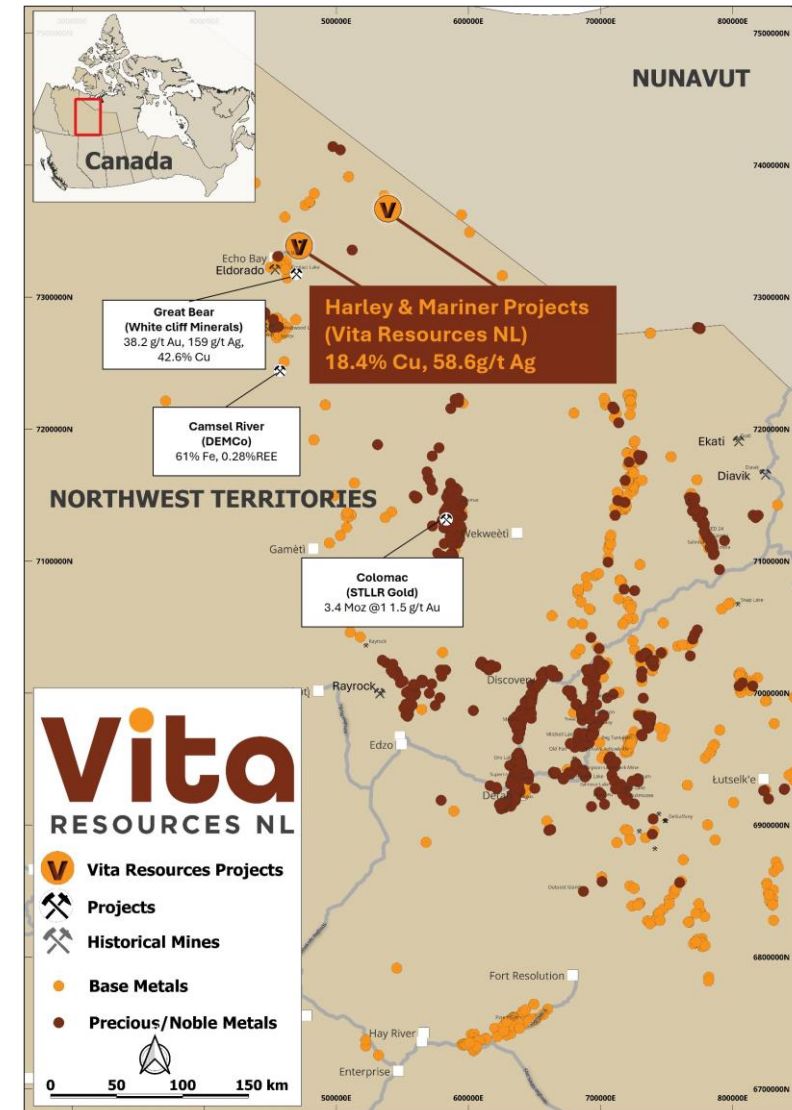
- Two mineralised horizons detected across 1km strike length
- Two claims covering 310km<sup>2</sup>
- Previous drilling intersected sedimentary copper in both horizons and significant silver credits (up to 140g/t Ag<sup>1</sup>)
- Immense VHMS and IOCG mineralisation potential with limited drilling to date

## Mariner Copper Project

- Previous drilling intersected Cu as chalcopyrite and bornite in quartz
- Single 155km<sup>2</sup> prospecting licence
- Grades as high as 18.4% Cu<sup>2</sup>
- Surrounded by White Cliffs Minerals (ASX:WCN) Port Radium Project

<sup>1</sup> Refer VTA ASX Announcement 31<sup>st</sup> July 2024: "HARLEY & MARINER HIGH-GRADE COPPER ACQUISITIONS, NWT, CANADA – SEDIMENTARY COPPER AND IOCG PROJECTS"

<sup>2</sup> Refer VTA ASX Announcement 26 September 2024 "GEOLOGICAL CONSULTANTS ENGAGED TO FOLLOW UP HISTORICAL DRILLING OF UP TO 18.4% COPPER IN LARGE MINERALISED QUARTZ VEIN - MARINER COPPER PROJECT - NWT, CANADA"



## Corporate Snapshot

**\$2.42m**  
Market Cap  
@ \$0.032

**75,636,380**  
Shares on Issue

## Leadership Team



**Gavin Rutherford**  
Non-Executive Chairman

Mr Rutherford is an experienced director with a long-standing career in both ASX-listed and private/public exploration companies. His work has spanned domestic and international projects, including operations in Chile, Brazil, and South Africa. In addition to serving on various boards, he has held senior executive roles. His extensive background in mine-site contracting further enhances his industry expertise. Recognized as a strategic thinker and business builder, Mr Rutherford brings strong leadership and a proven track record of growth and development to his roles.



**Keith Ross**  
Non-Executive Director

Mr Ross is an experienced mining executive, with corporate and mine site experience. Managing several mining and processing facilities with a range of mineral commodities with major and junior companies. Skilled in coordinating startup projects from greenfields through to production and closure, including approvals, native title, team selection and commissioning. Experienced in plant optimization for existing facilities to reduce running costs and maximising profitability. Seconded to manage mines in South America and successfully completed feasibility studies in Australia, Asia, Africa and South America. Mr Ross is a mining engineering graduate from the WA School of Mines in Kalgoorlie. He also has an MBA from the University of WA and holds a 'WA Mine Managers Certificate of Competency'.



**Ray Muskett**  
Non-Executive Director

Mr Muskett is an experienced geologist who formulated various concepts and supporting databases that have been orientated to the identification of Olympic Dam style ore bodies and other large volcanogenic gold/copper deposits.

He has a Bachelor of Science in Geology and over 30 years of experience as a geologist specialising in gold exploration in Australia and overseas. He has well rounded professional experience covering gold and other mineral commodities (including nickel, diamonds, copper, zinc, tin and tantalum). Mr Muskett has previous experience as an executive director with both ASX-listed and unlisted public companies.

## Three Pillars of Vita

### Targeting near term shareholder value

Currently researching expansion of ICE JORC MRE to include cobalt and silver

Source JV or Earn in Partner for Swedish REE & Cu Project

### GOLD Acquisition

Seeking High Quality Gold Acquisition Opportunities In Australia and New Zealand

### Exploration

Expanded maiden programme at Ninnis Gold following positive first round results

Increase ICE exploration activities

## CONTACT US



**Gavin Rutherford**

Non-Executive Chairman

**P** +61 400 250 441

**E** [gavin.rutherford@vitaresources.au](mailto:gavin.rutherford@vitaresources.au)

352B Cambridge Street, Wembley WA 6014

**Vita**  
RESOURCES NL

ersonal use only