

ASX Announcement

ASX:WIN

2 June 2026



WIN INCREASES RADIO GOLD RESOURCE TO 49,600 OUNCES AT 4.2 G/T

73% Resource Growth Since Acquisition as WIN Advances Mining Studies and Development Planning

HIGHLIGHTS

- Radio Gold Project Mineral Resource increased by 21% to 49,600 ounces, with an updated June 2026 JORC (2012) Mineral Resource Estimate (MRE) of 366,000 tonnes at 4.2 g/t Au following WIN's successful 2026 drill program
- Resource growth of 73% since WIN acquired the Project in August 2025
- Indicated resource base increased 21% to 25,500 ounces, improving confidence in planned initial mining areas
- 38% tonnage increase to Indicated category at Repeater to 66,000 tonnes @ 3.4 g/t Au for 7,200 ounces
- Increased resource confidence delivered by 4,200 metres of drilling completed in February 2026 derisking front end of the mine plan for both Radio and Repeater
- Ore processing options being evaluated and confirmatory metallurgical test work on foot
- Updated mine planning, financial modelling and permitting activities progressing toward a potential development decision

WIN Metals Ltd (ASX: WIN) ("WIN" or "the Company") is pleased to [report](#) an updated Mineral Resource Estimate (MRE) for the Company's 100% owned Radio Gold Project, located 38km north of Southern Cross in Western Australia.

The updated Radio MRE now totals 366,000 tonnes grading at 4.2 g/t Au for 49,600 ounces of gold, representing a 21% increase in indicated category and total ounces for the Project¹.

2026 drilling has increased resource confidence and derisked the near-term production areas including previously reported intercepts 3 m @ 19.5 g/t Au at Repeater, 1 m @ 23.4 g/t Au and 2 m @ 16.0 g/t Au and high-grade face samples above 300 g/t Au in the upper levels at Radio².

Importantly 25,500 ounces are now classified as Indicated, reflecting improved confidence in geological continuity and data quality.

¹ ASX:WIN "Radio Gold Project Mineral Resource Update" Released 29 January 2026

² ASX:WIN "Radio Delivers Bonanza Grades" Released 4 May 2026

2 June 2026

Managing Director and CEO, Mr Steve Norregaard commented:

“In less than a year since acquiring the Radio Gold Project, WIN has delivered a transformational uplift in the Mineral Resource, now standing at 49,600 ounces at 4.2 g/t gold. This rapid growth in ounces and grade demonstrates the quality of the asset and now much higher geological confidence validates our decision to move quickly and aggressively on Radio as a key near-term production opportunity for the Company.

Our 2026 drilling and underground face sampling programs have not only grown the Resource but materially increased confidence in the key mining areas at Radio and Repeater, with half of the Resource now classified as Indicated directly feeding into mine design and scheduling work.

With mining studies, permitting and processing options well advanced, WIN is now firmly positioned to progress Radio towards a development decision in the near future, with a clear objective of transforming the Company into a cash-generating gold producer.”

Next Steps:

- Finalise mining schedule with updated MRE
- Progress permitting and approvals for underground and open pit mining
- Finalise financial modelling considering preferred processing option
- Final investment decision to commence operations

Radio Gold Project – Mineral Resource Estimate Update:

The Radio Gold Project is reported according to the Australasian Code for Reporting of Exploration Results, Mineral Resources and Ore Reserves (the ‘JORC Code’) 2012 edition.

The June 2026 MRE has been reported at a 0.5 g/t Au cut-off above 50m from surface and 1 g/t Au cut-off below 50 m from surface totalling 366,000 tonnes at 4.2 g/t Au for 49,600 ounces of contained gold.

Table 1: Radio Gold Project Mineral Resource Summary by classification

Resource Classification	Tonnes	Au g/t	Contained Gold (Oz)
Indicated	200,000	4.0	25,500
Inferred	166,000	4.5	24,100
Total	366,000	4.2	49,600

Note: Figures are rounded and reported at 0.5 g/t cut-off to 50 m below surface (open pit) and 1.0 g/t below 50 m of surface. Tonnes and grade have been rounded to reflect the relative uncertainty of the estimates

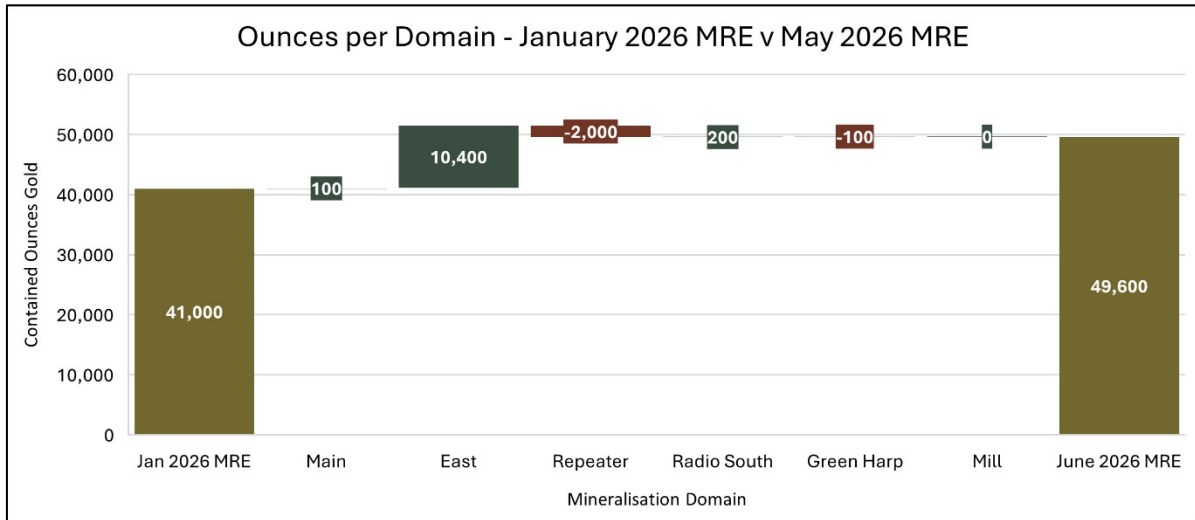


Figure 1: Comparison of January 2026 and June 2026 MRE's

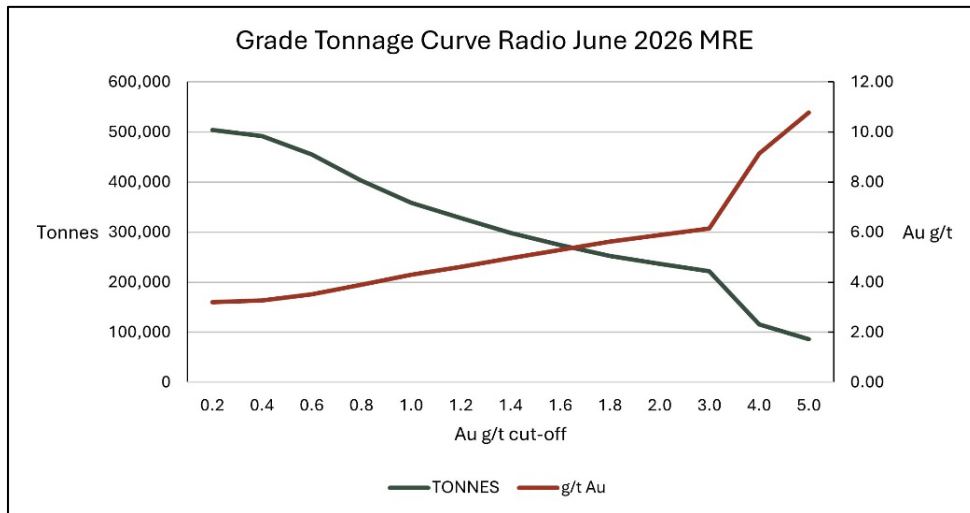


Figure 2: Radio Grade Tonnage Curve

Radio Gold Project Mineral Resource Discussion

Overview

WIN Metals has completed its June2026 MRE update for the Radio Gold Project after completing its second drill program since acquiring the Project in August 2025. A total of 4,200m were drilled to increase the drill density of the planned near-term production areas at Radio Main and East lodes whilst also targeting the adjacent Repeater deposit to increase the resource confidence as illustrated below in Figure 3.

For personal use only

2 June 2026

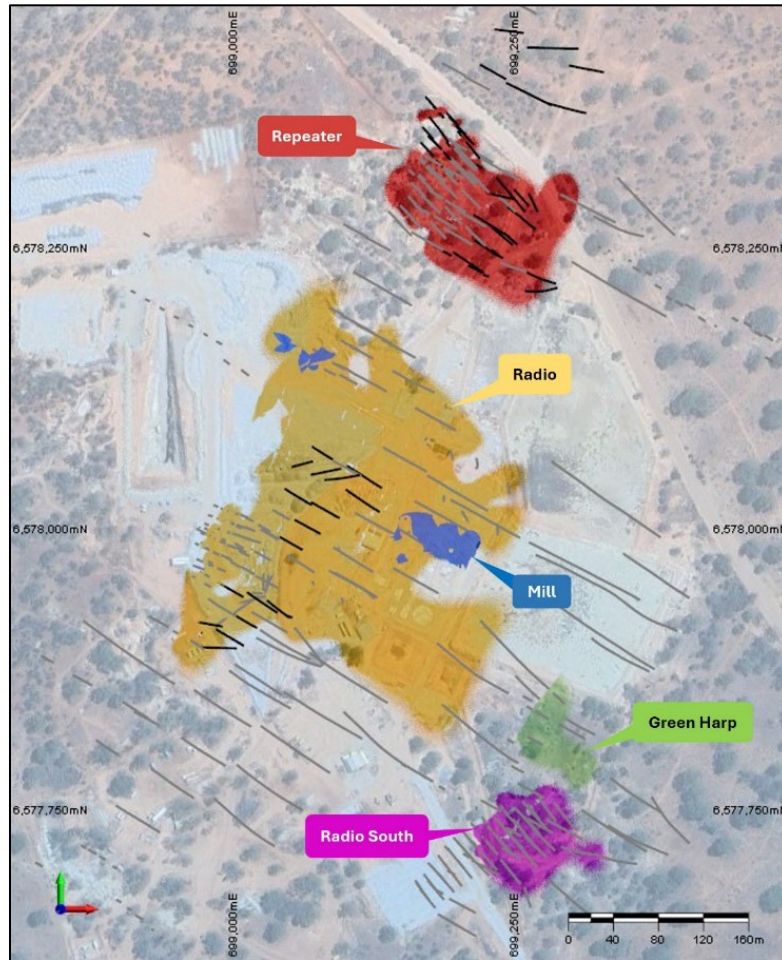


Figure 3: Radio Gold Project prospect location and drill traces (black traces 2026 drilling)

Location and Project History

The Radio Gold Project is situated within the Shire of Yilgarn in Western Australia, approximately 8 km north of Bullfinch and 38km north of Southern Cross in the Eastern Goldfields region of Western Australia. The site is accessed via the Mt Jackson Road, providing direct entry to the Project area.

For personal use only



Figure 4: Location of Radio Gold Project

Gold mining at the Radio Gold Project commenced in 1918, with approximately 71,000 ounces produced at an average head grade of 38 g/t Au between 1918 and 1974.

Underground operations were re-established in 2018 using the existing shaft, followed by development of a new surface portal and ~330 metres of decline to the historic second level. A shallow open pit to ~25 metres depth was also completed however, most near surface mineralisation remains unmined, providing potential for exploitation.

Historic production records for Repeater, Radio South and Green Harp are limited. Mining at Repeater has been confined to a very shallow open pit (<5 m) and minor underground development, while Radio South and Green Harp have been exploited via underground workings. Recent drilling at Radio South has defined the extent of historical stoping, and historic mine plans for Green Harp have been sourced to support ongoing geological and mining studies.

The Radio mine site remains intact and dewatered, with all necessary underground infrastructure in place, ideally positioning the Project for rapid restart.

Regional Geology

Regional geology of the Radio Gold Project is defined by its position on the eastern margin of the Archean Southern Cross Greenstone Belt, within the central Yilgarn Craton of Western Australia. The Southern Cross Belt is an elongated, north-northwest trending sequence of predominantly mafic to ultramafic volcanic rocks, interlayered with banded iron formation (BIF) and minor sediments, intruded by voluminous granitoid domes such as the Ghooli Dome. The greenstone succession is highly deformed, manifesting major folding, faulting, and shearing, and is

For personal use only

2 June 2026

metamorphosed primarily to amphibolite facies near the granite boundaries, with lower greenschist facies preserved in the belt core.

The structural architecture of the region is dominated by major north to northwest trending axes and ovoid granitoid intrusions, resulting in complex dome-and-keel geometries. Gold mineralisation in the province is typically structurally controlled, associated with late stage transpressional shear zones and contacts between greenstones and granitoids. The Radio Gold Project lies at a key geological interface between sheared greenstones and the Ghooli granitoid, a setting recognised as highly prospective for high-grade, vein-hosted orogenic gold deposits.

Local Geology

The local geology of the Radio Gold Project is defined by its position along the eastern margin of the Archean Southern Cross Greenstone Belt, near the triple junction of three granite bodies. The immediate mine area comprises six steeply dipping, northwest-trending tectono-stratigraphic units. The northeastern part of the tenement is underlain by sub-cropping granite containing rafts of banded iron formation (BIF) and ultramafic–mafic schists. Adjacent to this granite is a 500–1,500 m wide zone of strongly foliated amphibolite interlayered with BIF, ultramafic rocks and rare sediments.

The Radio Gold Mine itself is developed within the Ghooli granite dome, with quartz lodes extending west from the main granite body. Granitic rocks at Radio display strong S2–S3 fabrics, indicative of syn to late-tectonic granite emplacement related to regional folding and faulting. The central part of the mine sequence is dominated by a 5km wide, northwest trending greenstone package of tholeiitic basalt and minor dolerite dykes, generally lacking pervasive foliation.

BIFs within the greenstone sequence mark key stratigraphic horizons and are commonly associated with mafic and ultramafic schists in the southwest part of the project. Quartz lodes hosting gold mineralisation (Main and East lodes) exploit faulted granite contacts and adjacent amphibolite or sericite–kaolinite–chlorite–pyrite-altered granites.

Mineralisation Interpretation

Gold mineralisation at Radio is localised within two narrow high-grade quartz lodes, the Main (Footwall) Lode and the East (Hangingwall) Lode hosted by sheared granite along the greenstone belt margin. These subparallel lodes strike northeast and dip 30–60° east southeast, with continuity mapped for 130 m underground and up to 700 m at surface. The lodes comprise laminated to massive quartz veins within sericite altered granitic gneiss, typically 0.2–2 m wide, with localised thickening in dilation zones. The vein system forms en-echelon arrays and stacked mineralised shoots (100–300 m in length), commonly pitching obliquely to the main lode trend, reflecting a structurally complex, brittle–ductile shear system. Gold occurs predominantly as coarse, free gold, with accessory pyrite, galena and arsenopyrite, consistent with an orogenic quartz vein style.

Three primary mineralised zones have been delineated at the Radio Gold Project:

- Radio – The central and most developed zone of mineralisation comprising two closely spaced subparallel en-echelon lodes (Main and East lodes) that dip at 30° to the south east and positioned approximately 1 – 5 m apart. These lodes represent the core of historical production and remain the principal focus for ongoing resource definition.



2 June 2026

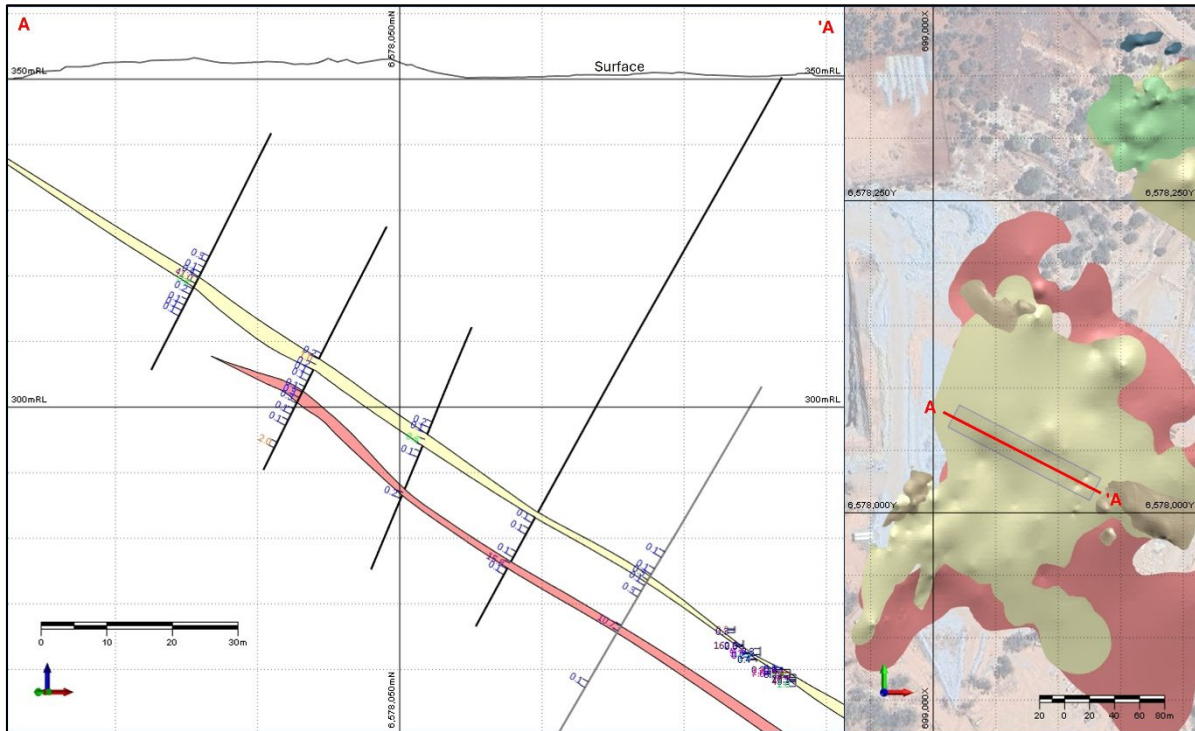


Figure 5: Section of Radio - Main and East lodes looking north east

- Radio Repeater – Located immediately north of Radio Main, this zone is interpreted as a geological continuation of the Radio mineralised system with three stacked en-echelon lodes defined dipping at 35° to the southeast. It is separated from the central zone by a mafic intrusive unit that forms a barren structural partition between the two mineralised corridors.

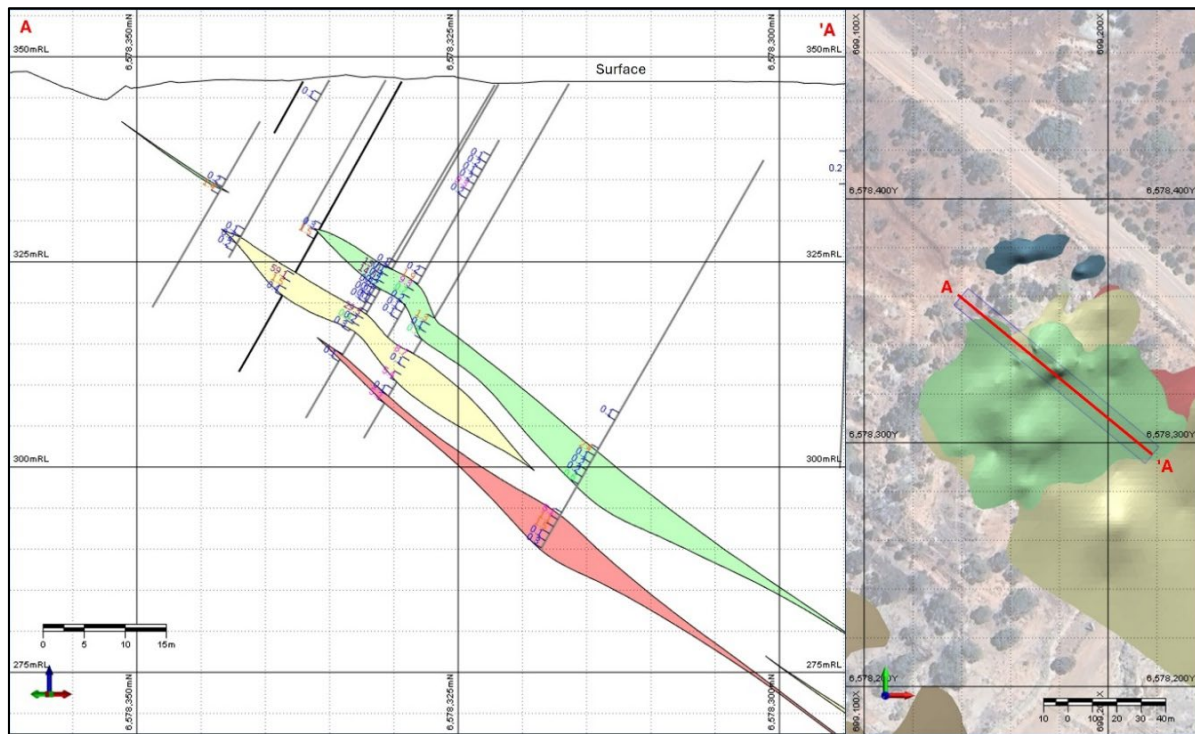


Figure 6: Section of Repeater stacked lodes looking north east

For personal use only

2 June 2026

- Radio South/Green Harp – Situated south of the main mineralised trend, this zone consists of multiple gold-bearing lodes that dip steeply (60°– 80°) to the southeast. The lodes display a distinct structural orientation relative to the main Radio system, indicating a separate yet related deformation event controlling gold deposition.

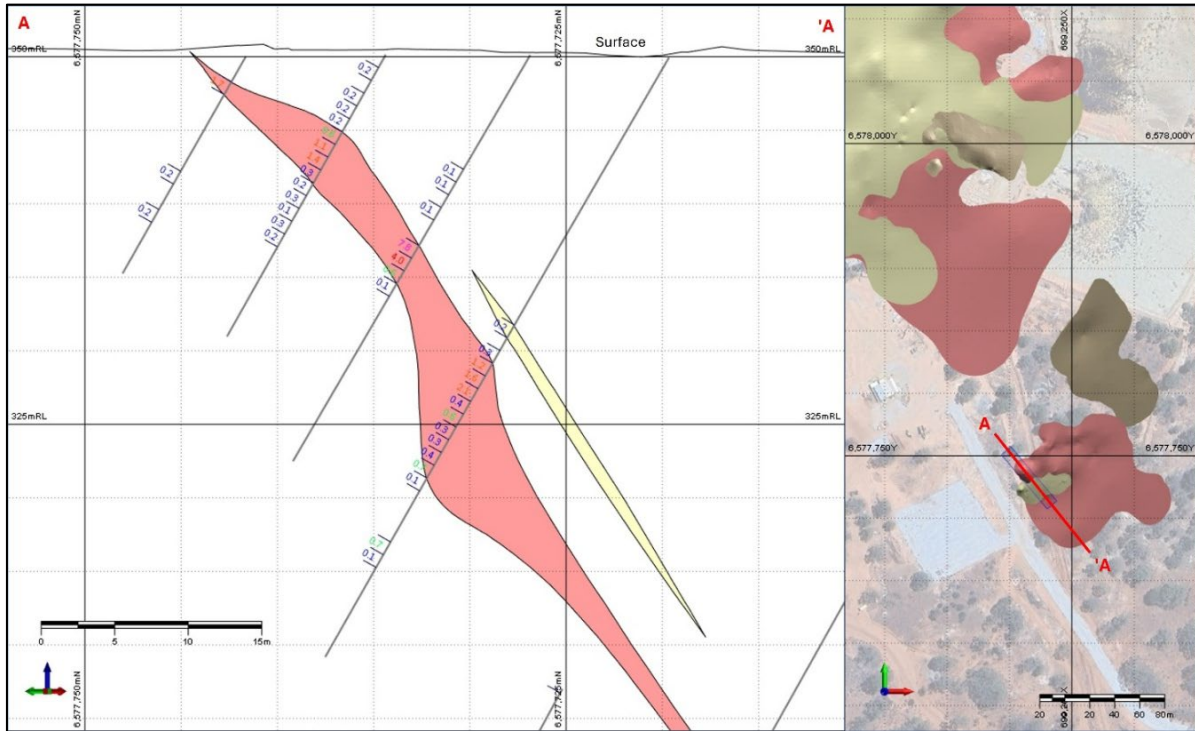


Figure 7: Section of Radio South lodes looking north east

Drilling Techniques

WIN Drill Programs

2026 drilling was completed using a reverse circulation (RC) rig, fitted with a 143 mm face-sampling bit and supported by an auxiliary compressor and booster, to obtain 1m samples from which 3–5 kg sub-samples were collected. All 2026 drill holes were downhole surveyed using an IMDEX OMNIx38 north-seeking gyroscopic tool at regular 15 m or 30 m intervals, depending on total hole length, and at end-of-hole depth. Drill hole collar coordinates were surveyed using a Trimble RTK-DGPS, achieving an accuracy of approximately 0.02 m horizontally and 0.1 m vertically.

Table 2: Drillholes informing the 2026 MRE update

Type	Samples	Drill Holes
RC	606	240
Diamond	2	1
Face Sample	170	

For personal use only

2 June 2026

Sampling and Sub Sampling

Reverse circulation (RC) samples were collected at one-metre intervals. Each primary sample was split on-rig using a rotary cone splitter to produce two equal sub-samples in pre-numbered calico bags, each weighing approximately 2–3.5 kg. The residual reject material was temporarily stored in sample piles at the drill site. These collection methods were designed to ensure representative and consistent sampling.

Primary RC samples were also split via the on-rig cyclone splitter to produce representative sub-samples of approximately 3–5 kg. Most samples were dry, and any moist samples were processed using the same methodology.

All samples were prepared at Bureau Veritas (Canning Vale, WA), where they were dried at 105°C, crushed to <10 mm, riffle split, and pulverised to 90% passing 75 µm. A 200 g pulp was retained for fire assay, and coarse rejects were archived. Sample sizes are considered appropriate for the style of mineralisation and expected grain size.

Assay and QAQC

WIN's quality assurance and quality control (QAQC) program was implemented through the routine insertion of certified reference materials (CRMs), blanks and field duplicates at nominal rates of 5% and 2%, respectively. Samples were assayed by Bureau Veritas using a 40 g fire assay with AAS finish, with a gold detection limit of 0.01 ppm. As part of its standard laboratory protocols, Bureau Veritas also inserted its own standards, blanks and duplicates independent of the Company's QAQC program.

The combined QAQC datasets have been reviewed and are considered satisfactory, demonstrating acceptable accuracy and precision for the assay methods used. No umpire laboratory analyses have been undertaken at this stage. Bureau Veritas is NATA-accredited to ISO/IEC 17025, providing additional confidence in the reliability of the analytical results.

Estimation and Modelling Techniques

Mineral resource modelling and grade estimation for the Radio Gold Project were completed using Micromine software. The interpretation defined nine mineralised domains to honour the spatial distribution of gold grades within the geometry of the identified quartz-vein hosted lodes. Estimation domains were constructed by manually selecting intervals based on a combination of gold grade (nominally greater than 0.2 g/t Au) and logged geology, with particular emphasis on quartz veining. Intervals containing quartz veining confirmed from chip tray photography were also included, even where gold grades fell below the nominal 0.2 g/t Au threshold, to ensure geological continuity of the lodes.

Gold grades were interpolated using an inverse distance weighted cubed (IDW³) algorithm, with gold (Au ppm) the only estimated variable. Sample data were composited to 1 m downhole intervals prior to estimation. High-grade capping thresholds were reviewed by domain and by sample type (drill samples versus face samples) using log-probability plots, histograms and other statistical diagnostics. Top cuts of 100 g/t Au were applied to all domains.

The block model used a parent cell size of 5 m (E) by 10 m (N) by 10 m (Z), with sub-blocking down to 0.3125 m by 0.625 m by 0.625 m to accurately represent vein geometries and domain boundaries. Grades were estimated into the parent blocks, with the model rotated 60 degrees clockwise (azimuth N20°) to align with the dominant strike of the mineralisation. Estimation domain codes

2 June 2026

were written to the block model so that, for each lode, only samples within the corresponding mineralised wireframe were used to estimate grades into that domain's blocks.

Anisotropic search ellipsoids were defined for each of the domain, with orientations set to reflect the interpreted dip, dip direction and plunge of mineralisation. Block grades were estimated using three successive search passes, with progressively expanding ellipsoid radii of approximately 45 m (Major), 40 m (Semi Major), 10 m (Minor) for Pass 1. 60 m (Major), 60 m (Semi Major), 10 m (Minor) for Pass 2. 120 m (Major), 90 m (Semi Major), 20 m (Minor) for Pass 3. A sector-based (octant) search was used to control sample distribution, with minimum and maximum sample and hole requirements adjusted by pass, to balance data support and continuity. No discretisation points were applied within blocks (1x1x1).

Model validation included comparison of composite and block model statistics at both global and domain scales, visual checks of grade distribution of the block model versus drillhole assays on sections and plans, and reconciliation of wireframe volumes against block model volumes. These checks confirmed that the block model estimates reasonably honour the informing data and appropriately reflect the interpreted geometry and grade tenor of the mineralised domains. Overall, the estimation outcomes are considered robust and suitable for reporting Mineral Resources at the Radio Gold Project.

A bulk density of 2.62 t/m³ was assigned to all fresh mineralised and waste blocks within the block model. A weathering surface, interpreted from geological logging, was incorporated into the model, with all blocks above this surface assigned a bulk density of 2.50 t/m³. These values are higher than typical industry expectations due to the absence of a developed regolith profile at Radio. Weathered and transitional material is generally competent granite, with weathering largely confined to fracture zones at shallow depths of approximately 1–2 m. Blocks located within areas interpreted as historic mill contamination were assigned a reduced bulk density of 1.70 t/m³.

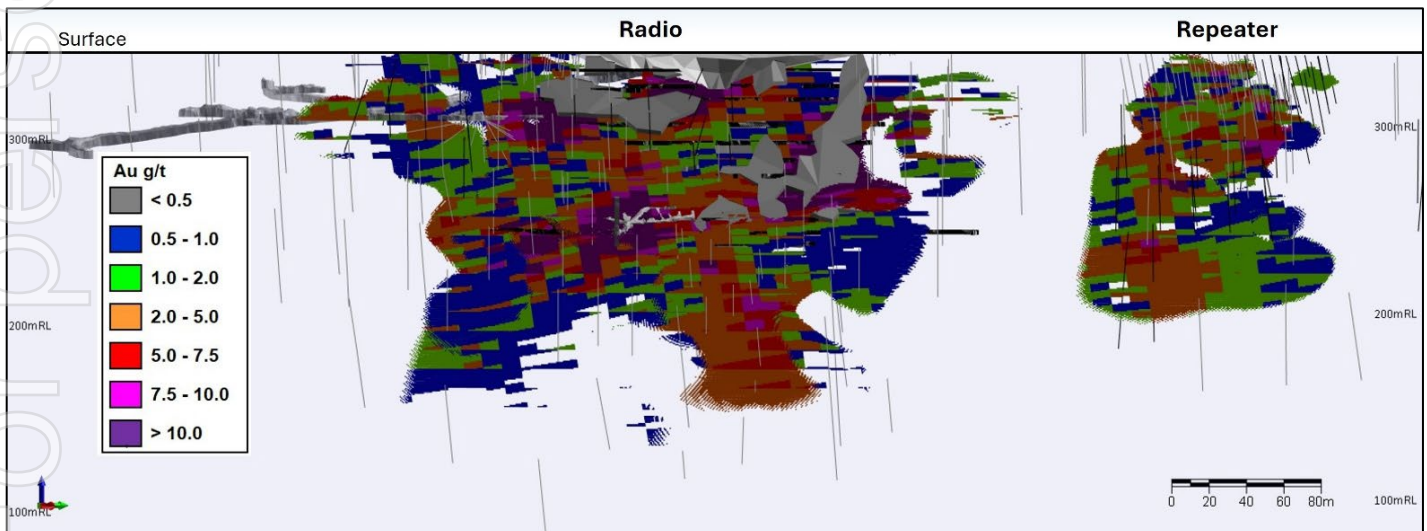


Figure 8: June 2026 MRE block model (unmined >0.5 g/t Au), drill traces and UG development (grey) looking north west

Cut-off Grades

Cut-off grades have been selected to reflect typical parameters for low strip ratio open pit and narrow vein underground gold mining scenarios. A cut-off grade of 0.5 g/t Au has been applied to material within an open pit mining envelope to approximately 50 m below surface (around the 300 mRL), with a higher cut-off grade of 1.0 g/t Au applied to material below this depth, consistent

2 June 2026

with a potential underground mining scenario. These cut-off grades are considered appropriate for the style of mineralisation and are regarded as suitable for reporting the Mineral Resource.

Resource Classification

The Mineral Resource has been classified with reference to drillhole spacing, total number of samples, proximity to historic underground development, density of face sampling, demonstrated geological and mineralisation continuity, and the estimation search pass used for each block. Classification envelopes were interpreted in Micromine and subsequently coded into the block model.

No material is classified as Measured.

Indicated Mineral Resources are defined where drill spacing is approximately 20 m, blocks lie within about 15 m of underground development, level face sampling is available, geological continuity is high, and blocks are estimated in Pass 1.

Inferred Mineral Resources are defined where drill spacing is generally greater than 20 m and typically less than 40 m, geological continuity is moderate, blocks are estimated in Pass 2 or Pass 3 and confidence in gold estimation is moderate to low.

No material is left unclassified, as the geological wireframes were limited to within 40 m of a drillhole.

Material potentially sterilised adjacent to historical mining voids (skins and pillars) has been classified as Inferred so that it is not relied upon for mine design purposes.

The Mill domain has been classified as Inferred due to the current drill spacing of 10 m x 10 m and uncertainties in metallurgical characteristics.

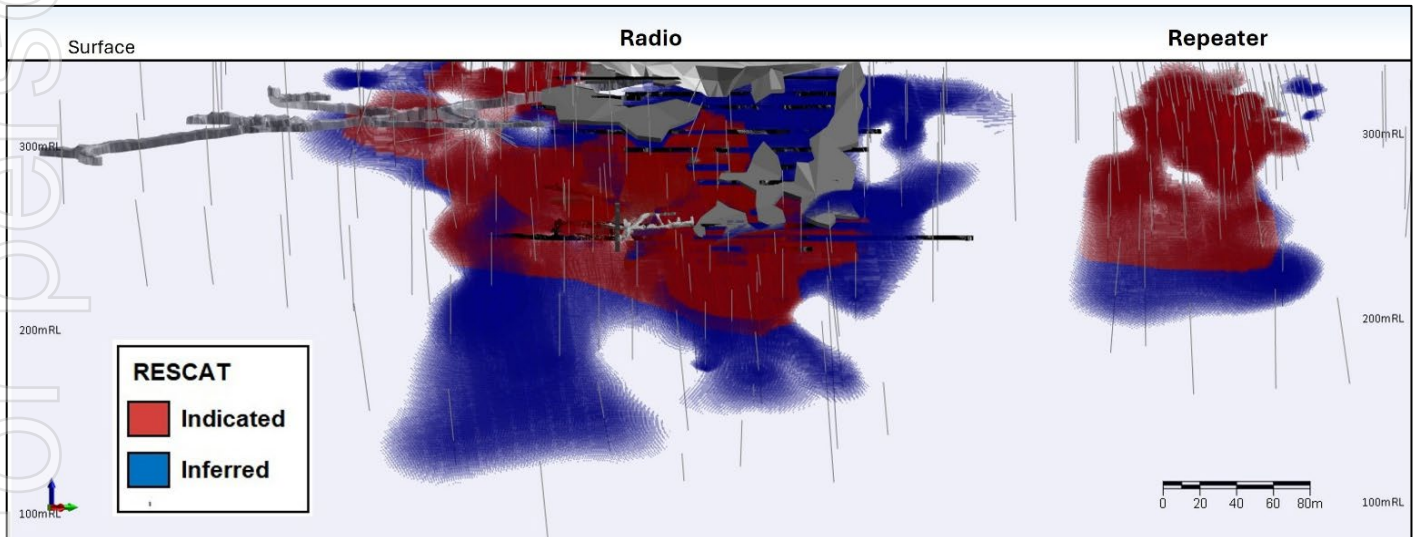


Figure 9: Radio and Repeater resource classification, drilling and underground development (grey) looking north west

Review and Audits

The MRE has undergone internal review by WIN personnel and the Competent Person, with no fatal flaws identified. The estimation methodology is considered appropriate for the style, geometry and continuity of the mineralisation and suitable for public reporting of the Mineral Resource.

2 June 2026

Resource Comparison

WIN Metals Limited announced an updated MRE for the Radio Gold Project in January 2026, reporting 345,000 tonnes at 3.7 g/t Au for 41,000 ounces of contained gold. In comparison this June 2026 update reports 366,000 tonnes (up 21,000 t or 6%) at 4.2 g/t Au (up 0.52 g/t or 14%) for 49,600 ounces (up 8,600 oz or 21%).

Table 3: January 2026 and June 2026 MRE comparison

	Resource Classification	Tonnes	Au g/t	Contained Gold (Oz)
Jan-26	Indicated	161,000	4.07	21,000
Jun-26	Indicated	200,000	3.97	25,500
	Difference	39,000	-0.10	4,500
Jan-26	Inferred	184,000	3.38	20,000
Jun-26	Inferred	166,000	4.52	24,100
	Difference	- 18,000	1.14	4,100
Jan-26		345,000	3.70	41,000
Jun-26		366,000	4.22	49,600
	Difference	21,000	0.52	8,600
	% Relative Difference	6%	14%	21%

Note: Figures are rounded and reported at 0.5 g/t cut-off to 50 m below surface (open pit) and 1.0 g/t below 50 m of surface. Tonnes and grade have been rounded to reflect the relative uncertainty of the estimates

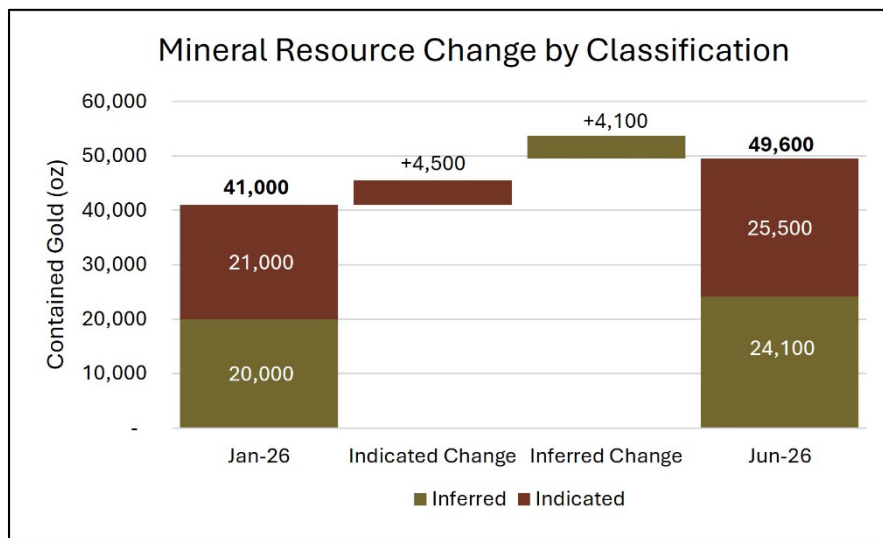


Figure 10: Resource classification comparison January 2026 MRE and June 2026 MRE

Subsequent drilling has informed the June 2026 MRE update, with results supporting improved grades in the upper portions of the Radio deposit. However, infill drilling conducted below the planned open pit at the Repeater area has led to a reduction in the overall Indicated resource grade relative to the January 2026 estimate.

2 June 2026

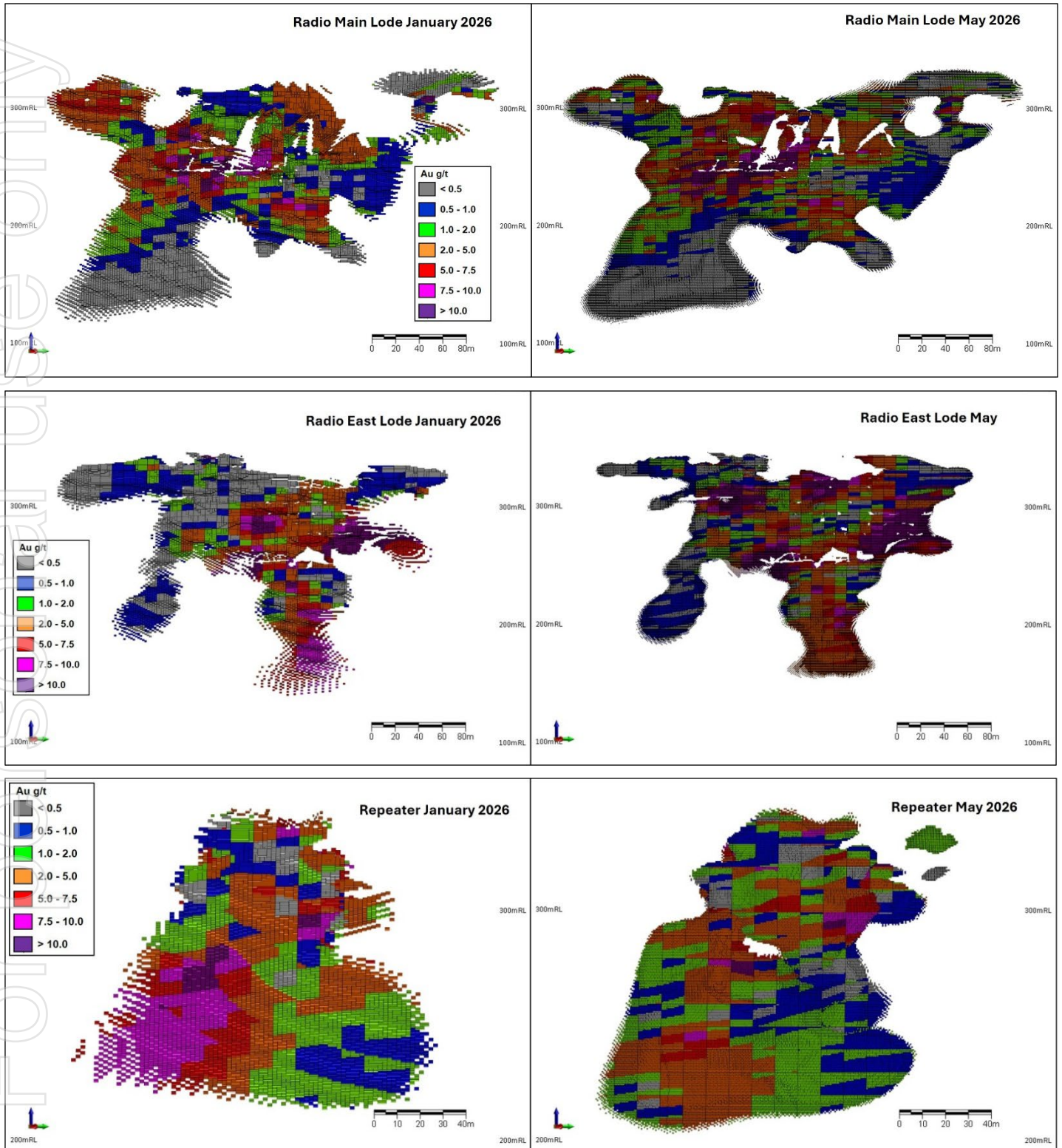


Figure 11: January versus June gold distribution

Increased drill density from 2026 drilling has resulted in converting previously inferred to indicated resources at Radio's Main and East lodes to the north and upper area of the lodes whilst Repeater resource confidence has increased at depth as illustrated below in Figure 10.



2 June 2026

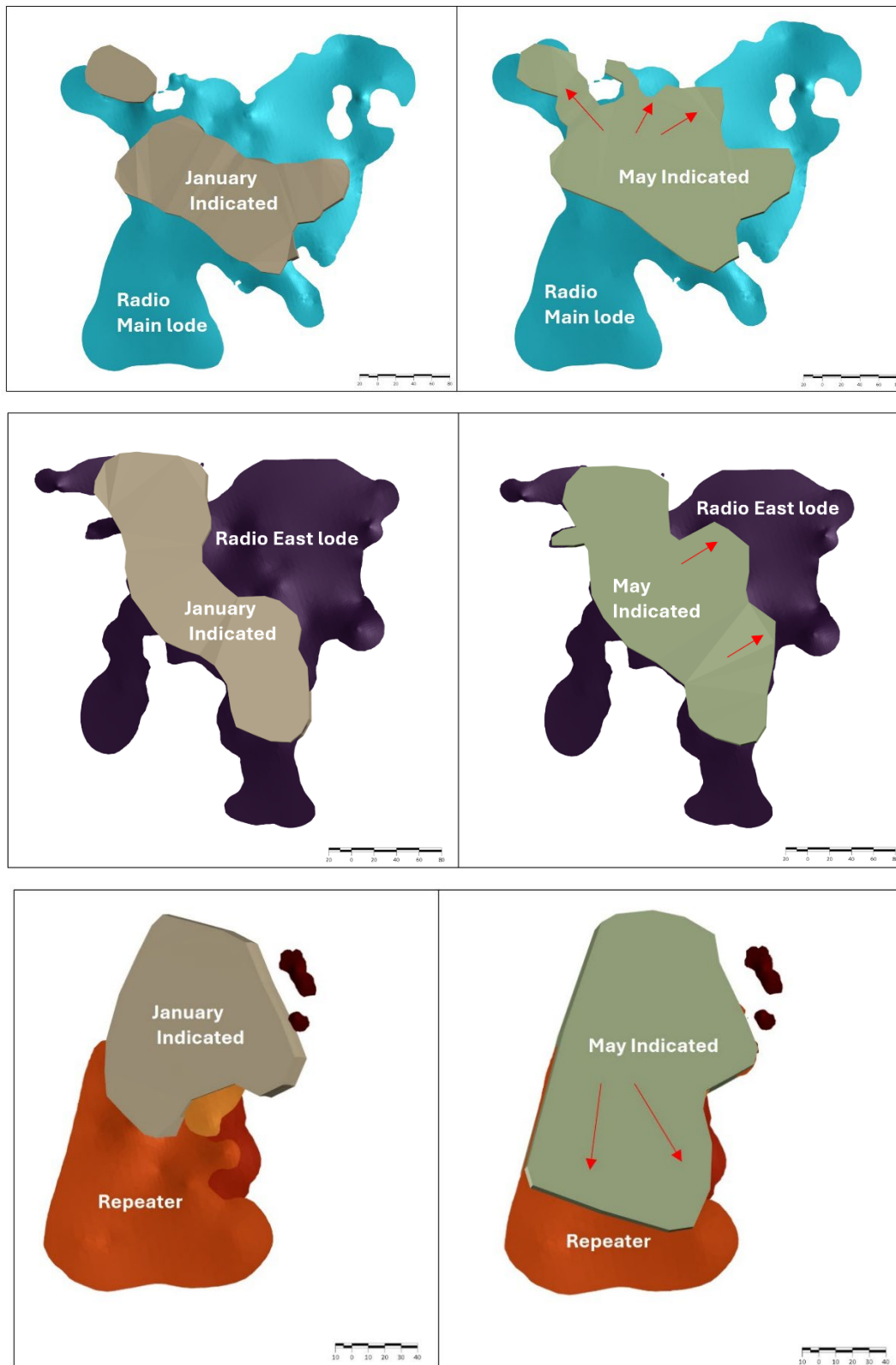


Figure 12: Resource classification changes between January and June 2026 MRE driven by increased drill density

The June 2026 Mineral Resource update incorporates additional underground face sampling data and a reassessment of the grade top-cut, which has been increased from the previously applied

For personal use only

2 June 2026

30 g/t Au to 100 g/t Au. Review of the expanded composite dataset demonstrates that the prior 30 g/t Au top-cut was overly conservative relative to the observed grade distribution, particularly for a high-grade, nuggety mineralisation system such as Radio.

Statistical analysis of the raw composite grades indicates a legitimate high-grade population that was being disproportionately truncated under the previous top-cut, resulting in a material loss of contained metal. The revised 100 g/t Au top-cut is better supported by the underlying composite statistics, including grade distribution characteristics and the presence of a robust high-grade tail, and is considered more representative of the true mineralisation.

This adjustment reduces unnecessary top-cutting while remaining within reasonable limits for estimation, thereby improving the reliability of the resource model. The impact of this change is most evident in the Inferred Resource category, where lower data density increases sensitivity to top-cut assumptions. Consequently, the updated approach has contributed to a higher reported gold grade and a more realistic representation of contained metal compared to the January 2026 MRE.

Metallurgy

Metallurgical testwork completed to date indicates that Radio ore is amenable to conventional gold processing, with no material issues identified in relation to gold recovery.

In March 2018, a bottle-roll cyanide leach test on representative Radio ore returned gold recoveries consistent with industry-standard cyanide leach performance. In the same year, a parcel of approximately 1,286 tonnes of ore mined by Resource and Energy Group was toll treated through Barto Gold's Marvel Loch processing plant, with no gold recovery issues reported.

Further confirmatory testwork was completed in May 2021 at ALS, where gravity recovery testing of Radio ore recovered 85.9% of the gold into a low-mass gravity concentrate. This high gravity recovery supports the presence of liberated coarse free gold and confirms the potential for effective gold recovery using conventional gravity and cyanide leach flowsheets.

About WIN Metals

WIN Metals Limited (ASX: WIN) is an Australian mineral exploration company with a portfolio of quality gold, nickel, and lithium assets across approximately 350 km² of granted tenure in the Southern Goldfields and Kimberley regions of Western Australia.

The Mt Edwards Nickel and Faraday-Trainline Lithium Projects are located near Widgiemooltha, approximately 80 km south of Kalgoorlie-Boulder and 30 km south of Kambalda.

- The Mt Edwards Nickel Project is a collection of eleven (11) nickel deposits with a combined mineral resource of 12.7 Mt @ 1.43% Ni for 180,900 t of contained nickel³.
- The Faraday-Trainline Lithium Project hosts a reported mineral resource of 1.96 Mt at 0.69% Li₂O⁴.

In the Kimberley region, the Butchers Creek Gold Project lies 30 km southeast of Halls Creek. The project is centred on a historic gold production area and hosts a global Mineral Resource of 5.6 Mt

³ ASX:WIN "Sale of non-core assets yield \$1.4M for WIN to advance gold Assets" Released 1 July 2025

⁴ ASX:WIN "375% Growth in Faraday-Trainline Lithium Mineral Resource" Released 8 November 2023

2 June 2026

@ 1.98 g/t Au for 359,000 ounces⁵ of gold. Historical mining between 1995 and 1997 produced approximately 52,000 ounces.

The Radio Gold Project, located 8 km north of Bullfinch and approximately 38 km northwest of Southern Cross, is another cornerstone asset within WIN’s portfolio. Over its mine life, Radio produced roughly 71,000 ounces of gold at an average grade of 38 g/t Au. WIN’s 2026 global Mineral Resource Estimate for the Project totals 366,000t @ 4.22 g/t Au for 49,600 ounces of contained gold.

WIN Metals remains focused on advancing its diversified portfolio of critical and precious metal projects through targeted exploration and development activities aimed at building long-term shareholder value.

Table 4: WIN Metals Butchers Creek Gold Mineral Resource Estimates

Deposit	Last Update	Resource Classification	Tonnes (Mt)	Au (g/t)	Contained Gold (Oz)
Butchers Creek	Apr-25	Indicated	3.58	2.24	258,000
		Inferred	1.65	1.18	63,000
Golden Crown	Jun-21	Inferred	0.40	3.10	38,000
Total		Indicated + Inferred	5.63	1.98	359,000

Note: Butchers Creek figures are rounded and reported at 0.5 g/t Au cut-off to 150 m below surface (open pit) and 0.8 g/t Au cut-off below 150 m of surface. Golden Crown figures are rounded and reported above a 0.8 g/t Au cut-off.

Table 5: WIN Metals Mt Edwards Nickel Mineral Resource Estimates

Deposit	Indicated		Inferred		TOTAL Resources		
	Tonne (Mt)	Nickel (%)	Tonne (Mt)	Nickel (%)	Tonne (Mt)	Nickel (%)	Nickel Tonnes
Gillett*	2.27	1.35	0.87	1.16	3.14	1.30	40,770
Widgie 3*	0.51	1.34	0.22	1.95	0.73	1.53	11,200
Widgie Townsite*	1.65	1.60	0.85	1.38	2.50	1.53	38,260
Armstrong*	0.95	1.45	0.01	1.04	0.96	1.44	13,820
132N	0.03	2.90	0.43	1.90	0.46	2.00	9,050
Cooke			0.15	1.30	0.15	1.30	2,000
Inco Boundary			0.46	1.20	0.46	1.20	5,590
McEwen			1.13	1.35	1.13	1.35	15,340
McEwen Hangingwall			1.92	1.36	1.92	1.36	26,110
Mt Edwards 26N			0.87	1.43	0.87	1.43	12,400
Zabel	0.27	1.94	0.05	2.04	0.33	1.96	6,360
TOTAL	5.68	1.48	6.97	1.39	12.66	1.43	180,900

All Resources reported at 1.0% Ni cut-off except for WTS, Widgie 3, Gillett and Armstrong which are reported at 0.7% Ni cut-off. Tonnes and grade have been rounded to reflect the relative uncertainty of the estimates.

⁵ ASX:WIN “WIN advances Butchers Creek towards development following resource update” Released 16 April 2025

2 June 2026

Table 6: WIN Metals Mt Edwards Lithium Mineral Resource Estimates

Deposit	Measured		Indicated		Inferred		TOTAL Resources		
	Tonne (kt)	Li ₂ O (%)	Tonne (kt)	Li ₂ O (%)	Tonne (kt)	Li ₂ O (%)	Tonne (kt)	Li ₂ O (%)	Li ₂ O Tonnes
Faraday	550	0.75	250	0.66	220	0.61	1,020	0.7	7,100
Trainline	-	-	780	0.69	160	0.63	940	0.68	6,300
TOTAL	550	0.75	1,020	0.68	390	0.62	1,960	0.69	13,500

Reported above a cut-off grade of 0.30% Li₂O to a depth of 310 mRL (65m below surface) and 0.50% Li₂O below 310 mRL to 250 mRL. Tonnes and grade have been rounded to reflect the relative uncertainty of the estimates.

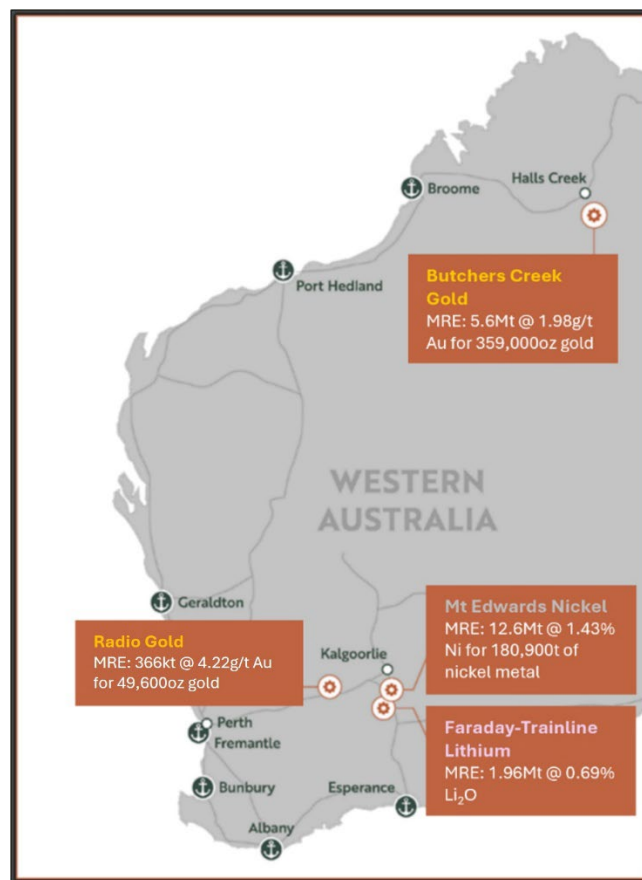


Figure 13: WIN's Gold, Nickel and Lithium Project Locations

Competent Person Statement – WIN Metals

The information in this announcement that relates to Mineral Resources and Exploration Results for the Radio Gold Project is based on, and fairly reflects, information compiled by Mr Huw Edwards and reviewed by Mr William Stewart, both full time employees and shareholders of WIN Metals Ltd.

Mr Stewart is a Member of the Australasian Institute of Mining and Metallurgy (AusIMM Member No. 224335) and has sufficient experience relevant to the style of mineralisation, type of deposit under consideration, and the activities undertaken to qualify as a Competent Person as defined in the 2012 Edition of the Australasian Code for Reporting of Exploration Results, Mineral Resources and Ore Reserves (JORC Code).

For personal use only

2 June 2026

Mr Stewart consents to the inclusion in this announcement of the matters based on his information in the form and context in which it appears. WIN Metals Ltd confirms that it is not aware of any new information or data that materially affects the information contained in previous ASX announcements referenced in this report.

Forward Looking Statements

This announcement includes forward-looking statements that are only predictions and are subject to known and unknown risks, uncertainties, assumptions and other important factors, many of which are beyond the control of WIN Metals Ltd, the directors and the Company's management. Such forward-looking statements are not guarantees of future performance.

Examples of forward-looking statements used in this announcement include use of the words 'may', 'could', 'believes', 'estimates', 'targets', 'expects', or 'intend' and other similar words that involve risks and uncertainties. These statements are based on an assessment of present economic and operating conditions, and on a number of assumptions regarding future events and actions that, as at the date of announcement, are expected to take place.

Actual values, results, interpretations or events may be materially different to those expressed or implied in this announcement. Given these uncertainties, recipients are cautioned not to place reliance on forward-looking statements in the announcement as they speak only at the date of issue of this announcement. Subject to any continuing obligations under applicable law and the ASX Listing Rules, WIN Metals Ltd does not undertake any obligation to update or revise any information or any of the forward-looking statements in this announcement or any changes in events, conditions or circumstances on which any such forward-looking statement is based.

Summary Information

This announcement has been prepared by WIN and includes information regarding WIN's disclosure of results to the ASX.

This announcement should also be read in conjunction with WIN's other periodic and continuous disclosure announcements lodged with the ASX, which are available at www.asx.com.au and available on WIN's website at www.winmetals.com.au.

Table 7: Reference documents included in this announcement

Number	Date	Company	Title
1	29-Jan-26	WIN	Radio Gold Project Mineral Resource Update
2	4-May-26	WIN	Radio Delivers Bonanza Grades
3	1-Jul-25	WIN	Sale of Non-Core Assets Yield \$1.4M for WIN to Advance Gold Assets
4	8-Nov-23	WIN	375% Growth in Faraday-Trainline Lithium Mineral Resource
5	16-Apr-25	WIN	WIN Advances Butchers Creek Towards Development Following Resource Update

Compliance Statement

The Company confirms it is not aware of any new information or data that materially affects the information included in the original market announcement(s), and in the case of estimates of Mineral Resources that all material assumptions and technical parameters underpinning the estimates in the relevant announcement continue to apply and have not materially changed. The Company confirms that the form and context in which the Competent Person's findings are presented have not been materially modified from the original announcement.

2 June 2026

Approved by: The Board of Directors

-ENDS-

For further details please contact:

Steve Norregaard

Managing Director

WIN Metals Ltd

E steve@winmetals.com.au

T 0472 621 529

Paul Berson

Executive Adviser

Corporate Storytime

E paul@corporatestorytime.com

T 0421 647 445

For personal use only



2 June 2026

Appendices

Table 8: Drill Collar Data

Hole ID	Easting (m)	Northing (m)	Elevation (m)	Azimuth	Dip	EOH Depth (m)	Hole Type
26RDRC037	699219	6578234	347	284	-86	108	RC
26RDRC038	699231	6578250	347	305	-81	102	RC
26RDRC039	699228	6578251	347	300	-71	96	RC
26RDRC040	699240	6578262	347	309	-70	96	RC
26RDRC041	699237	6578269	346	302	-60	90	RC
26RDRC042	699242	6578302	346	281	-70	84	RC
26RDRC043	699254	6578296	346	317	-75	102	RC
26RDRC044	699251	6578291	346	321	-61	96	RC
26RDRC045	699247	6578286	346	301	-80	96	RC
26RDRC046	699262	6578291	346	329	-80	102	RC
26RDRC047	699260	6578276	346	305	-80	114	RC
26RDRC048	699244	6578262	347	309	-80	108	RC
26RDRC049	699280	6578224	347	256	-76	160	RC
26RDRC050	699278	6578227	346	287	-76	156	RC
26RDRC051	699186	6578252	347	299	-71	72	RC
26RDRC052	699250	6578450	345	277	-60	54	RC
26RDRC053	699298	6578436	344	271	-56	84	RC
26RDRC054	699321	6578415	344	281	-71	102	RC
26RDRC055	699234	6578409	345	300	-61	54	RC
26RDRC056	699274	6578386	345	297	-61	90	RC
26RDRC057	699305	6578379	345	281	-70	99	RC

Note: RC = Reverse Circulation
Coordinates are GDA94 zone 50

Table 9: Drill Results

Hole ID	Depth From (m)	Depth To (m)	Interval (m)	Au g/t	Gram x Meters	Prospect
26RDRC037					NSI	Repeater
26RDRC038					NSI	Repeater
26RDRC039	78	79	1	3.87	3.87	Repeater
26RDRC040					NSI	Repeater
26RDRC041	81	82	1	0.29	0.29	Repeater
26RDRC042					NSI	Repeater
26RDRC043	87	91	4	0.65	2.60	Repeater
26RDRC044					NSI	Repeater
26RDRC045	90	91	1	1.02	1.02	Repeater
26RDRC046					NSI	Repeater
26RDRC047	95	96	1	2.39	2.39	Repeater
26RDRC048					NSI	Repeater

For personal use only

WIN INCREASES RADIO GOLD RESOURCE TO 49,600 OUNCES AT 4.2 G/T



WIN METALS

2 June 2026

Hole ID	Depth From (m)	Depth To (m)	Interval (m)	Au g/t	Gram x Meters	Prospect
26RDRC049					NSI	Repeater
26RDRC050	123	124	1	2.43	2.43	Repeater
26RDRC051	58	60	2	1.89	3.79	Repeater
26RDRC052					NSI	Repeater
26RDRC053	77	78	1	4.49	4.49	Repeater
26RDRC054					NSI	Repeater
26RDRC055					NSI	Repeater
26RDRC056					NSI	Repeater
26RDRC057					NSI	Repeater

Note: All intercepts have been reported as downhole width

NSI = No Significant Intercept

For personal use only

2 June 2026

Table 1 As Per JORC Code Guidelines (2012)

Section 1 Sampling Techniques and Data – Radio Gold Project	
Criteria	Commentary
Sampling techniques	<p>Historic Historic reverse circulation (RC) drilling at Radio was generally sampled at 1 m intervals using industry-standard riffle splitting, although specific splitter details were not always recorded. Between 1986 and 1987 (holes RR1–RR51), 1 m samples of approximately 10–15 kg were collected and then riffle-split to produce 2 m composites. In 1996 (Sons of Gwalia; RDRC039–RDRC058), 1 m samples were riffle-split on site, while in 2004 (Gryphon Minerals; RDRC059–RDRC071) 1 m riffle-split samples were collected and later composited to 4 m intervals.</p> <p>From 2006–2008 (Gryphon Minerals; RDRC072–RDRC088), 1 m RC samples were riffle-split at the rig, collected in calico bags and then composited to 4 m using a scoop. In 2010 (Gryphon Minerals; RDRC089–RDRC098), 1 m intervals were collected as a split sample in calico with the bulk fraction retained in large plastic bags, from which 4 m composites were prepared using a spear. In 2013 (Southern Cross Goldfields; RARC001–RARC004, RARD001–RARD004), 1 m RC samples of nominal 2 kg were riffle-split, with 4m composites prepared by scoop. RC samples from 20RDRC001–017 (Radio Gold Pty Ltd) were collected at 1 m intervals, although specific splitting details were not documented.</p> <p>Diamond drilling was generally sampled on nominal 1m intervals, with shorter sample lengths used where required to honour geological boundaries. A combination of half-core and quarter-core sampling was employed, including half-core sampling for RC-DD holes RARD001–RARD004 drilled by Southern Cross Goldfields in 2013. No specialised or non-industry-standard sampling or sub-sampling techniques are known to have been used in the historical programs.</p> <p>Underground face samples were taken perpendicular to the lode to obtain a representative sample. Each face ore drive development face was sampled to lithological boundaries.</p> <p>WIN Reverse circulation (RC) samples were collected at one-metre intervals. Each primary sample was split using an on-rig rotary cone splitter to produce two equal sub-samples in pre-numbered calico bags, each weighing approximately 2–3.5 kg. The remainder (reject) was temporarily stored in sample piles at the drill site. Collection methods ensured representative and consistent sampling. Underground surface samples were collected via the use of a hammer drill to break away the sample from the rock face. Samples of 1.5-3.0 kg were collected in prenumbered calico bags, photographed.</p>
Drilling Techniques	<p>Historic RAB and RC drilling utilised face-sampling bits to obtain downhole samples, producing composite intervals representative of the logged lithology. Diamond drilling (DD) employed HQ and NQ core sizes, providing high-quality samples for lithological and structural interpretation.</p> <p>WIN 2026 Drilling was completed using JBELL Drilling’s KWL350 RC rig fitted with a 143 mm face-sampling bit and supported by an auxiliary compressor and booster. These methods are appropriate for the local lithology and style of mineralisation. Underground sampling N/A</p>
Drill Sample Recovery	<p>Historic No historic data is available regarding drill sample recovery.</p> <p>WIN Sample recovery was recorded by WIN whilst drilling. Recoveries are considered acceptable across the program. Minor losses were observed in the upper metre of some holes due to the fine-grained nature of near-surface material. No correlation was identified between recovery and assay grade. Underground sampling N/A</p>
Logging	<p>Historic Geological logging was qualitative in nature, recording key attributes such as lithology, oxidation state, texture, structure, alteration, sulphide type and abundance, mineralogy, and vein percentage. No sample photographs or core imagery have been located from the historical programs. RC and RAB drill holes were logged at 1-metre intervals, capturing sufficient detail to support evaluation of rock type, alteration, and mineralisation characteristics. Diamond drill holes (DD) were logged based on lithological and alteration boundaries, providing the necessary geological detail to describe mineralised zones. All DD, RAB, and RC drill holes were logged in their entirety to achieve continuous geological coverage of each hole.</p> <p>WIN All RC holes were geologically logged for lithology, alteration, weathering, and mineralogy. Logging was performed at one-metre intervals immediately after drilling. Rock chips were sieved, examined, and photographed. All drillholes were logged in full, providing continuous geological coverage. Surface samples were geologically logged and photographed. Underground sampling was logged for lithology and individual samples were photographed for reference.</p>

2 June 2026

Section 1 Sampling Techniques and Data – Radio Gold Project	
Criteria	Commentary
Sub-sampling techniques and sample preparation	<p>Historic For RC and RAB drilling, primary samples were collected via off-rig riffle splitters (historical) or on-rig cone splitters (recent), to obtain representative sub-samples of approximately 3–5 kg from each interval. Samples were generally dry. Wetter samples, where present, were split using the same methodology.</p> <p>DD samples were obtained by cutting half-core intervals, with sample lengths typically ranging from 0.3 to 1.3 m, guided by geological contacts. Underground face samples were taken perpendicular to the lode honouring lithology ranging in sample widths of 0.1-1.3 m.</p> <p>All samples were submitted to commercial laboratories where they were dried, crushed, and pulverised prior to assay. Quality control procedures, including the insertion of blanks, field duplicates, and certified reference materials, were variably employed in more recent programs to maximise sample representivity and monitor sample preparation quality. Sample sizes are considered appropriate for the style of mineralisation and grain size of the material being sampled.</p> <p>WIN Primary RC samples were split via the on-rig cyclone splitter to produce representative sub-samples of approximately 3–5 kg. Most samples were dry; moist samples were treated using the same technique. All samples were prepared at Bureau Veritas (Canning Vale, WA), where they were dried at 105°C, crushed to <10 mm, riffle split, and pulverised to 90% passing 75 µm. A 200 g pulp was retained for fire assay. Coarse rejects were archived. Sample sizes are appropriate for the mineralisation style and grain size.</p>
Quality of assay data and laboratory tests	<p>Historic Assaying was carried out at reputable, accredited Laboratories used extensively in Mining & Exploration industry at the time, including: - REVERSE CIRCULATION RR1-RR51 Analytical Services (WA) Pty Ltd - method Au F Au F1 determined by fire assay. Approximately 50 g sample weighed and fired. Noble bead analysed by AAS. RDRC001 - RDRC038 lab and method not specified RDRC039 - RDRC058 Yilgarn Assay Laboratory method not specified Accelerated Cyanide Leach with Solvent Separation, Flame AAS RDRC059 - RDRC071 4m composites ALS Perth method AA25 aqua regia acid digest and method FA-AA50 fire assay ore grade 50g FA AAS finish for 1m riffle splits. A significant nugget effect was identified with repeats varying by up to 21.2 g/t. In total, 36% of the ore zone repeats varied by greater than 5 g/t. The average range for the ore zone repeats was 8.38 g/t. The average grade of the ore zone was 10.68 g/t. RDRC072 - RDRC079 Genalysis method 4 m composites B/AAS Aqua Regia Digest solvent extraction flame AAS and method FA50/AAS 50g_Fire_assay_flame_AAS for 1 m riffle splits RDRC080- RDRC088 Ultra trace method AR101 aqua regia gold assay with an ICPOES finish 4 m composites Intervals returning results >0.1 ppm gold Genalysis Laboratory Services in Perth for 50 g fire assay with an AAS finish on the 1 m riffle split samples. Laboratory repeat analyses were by 25 g fire assay with an AAS finish. RDRC089- RDRC098 Genalysis Laboratory Services gold analysis using an aqua regia digest, solvent extraction with graphite furnace AAS finish, method code (B/ETA). RAR001- RARC004 Ultratrace 4 m composites aqua regia with an ICP-MS finish method AR001 Anomalous samples re-submitted on 1 m intervals for fire-assay FA002 or screen fire assay method SFA01 Au, Pt, Pd by Lead collection fire assay with ICPAES. Underground face samples from 2018 onwards were analysed via a 50 g fire assay with AAS finish. No QAQC or commercial laboratory data has been sourced. 20RDRC001-017 2020 drilling program samples were analysed using the PhotonAssay method at ALS. Approximately 500 g of pulverised sample was sealed in labelled jars and exposed to high energy Xrays, with the resulting gamma ray emissions measured to determine gold content. PhotonAssay is a rapid, non-destructive analytical method suitable for both coarse and fine gold, providing results comparable to fire assay within acceptable precision limits. DIAMOND RDDD99, RRDRCD100-101 Genalysis Laboratory Services 1n Maddington, Perth for gold analysis using a 50 g fire assay flame AAS code FA50/AAS repeats FA25/AAS RAR001- RARD004 Ultratrace 4 m composites aqua regia with an ICP-MS finish method AR001 Anomalous samples re-submitted on 1 m intervals for fire-assay FA002 or screen fire assay method SFA01 Au, Pt, Pd by Lead collection fire assay with ICPAES. Historical QA/QC data has not been reviewed and cannot be verified. Although contemporary industry practice typically includes routine insertion of certified reference materials (standards) and blanks into analytical batches to ensure assay accuracy and precision, the implementation of such procedures in earlier programs remains unconfirmed. Recent drilling campaigns implemented systematic quality control through insertion of standards, blanks, and field duplicates, supplemented by internal laboratory QA/QC checks, deemed appropriate for the style of mineralisation. No geophysical or handheld XRF analyses were used to support publicly reported exploration results. The Competent Person has not reviewed the QA/QC data, as these records were not provided or sourced for review.</p> <p>WIN Quality assurance and quality control (QAQC) were maintained through insertion of certified reference materials (CRMs), blanks, and field duplicates at scheduled rates of 5% and 2%, respectively. Samples were assayed by Bureau</p>

For personal use only



2 June 2026

Section 1 Sampling Techniques and Data – Radio Gold Project	
Criteria	Commentary
	Veritas via 40 g fire assay with AAS finish (detection limit 0.01 ppm Au). QAQC results were reviewed and deemed satisfactory, showing acceptable accuracy and precision. No umpire lab checks have yet been undertaken. Bureau Veritas is NATA-accredited to ISO/IEC 17025 standards.
Verification of sampling and assaying	<p>Historic Data capture and data entry was in keeping with Industry Standards for the period from 1985 to 2024. Drill holes were individually logged in hard copy (paper) and entered into spreadsheets and/or a Database for manipulation of the data on sections and plans. Copies of original logging and some original assay certificates filed with Department of Mines as part of Annual Technical Reports. Open File data in the form of Annual Technical Reports previously submitted to the Mines Department will be used for the ongoing digital capture of historic data. Additional information from historic company ASX announcements.</p> <p>Resources and Energy Group 2018 identified most of historical geology data was contained within either MS excel or MS notepad files. An MS access database was created to collate all the data. The database was imported into Micromine and validated. The validations undertaken included checking for missing holes, missing DH surveys and missing geology logs. Most of the missing data was identified and incorporated into the database. One of the major validation tools for historical assay data was identifying what assay techniques have been used for the historical drilling samples. No data existed for this in the company's archives. The geology department went back to the mineral labs that undertook the original assaying (ALS and SGS) and they reissued the lab certificates. Once the assay techniques were identified then this was incorporated in the database. All assay intersections were obtained from scanned analogue geological logs, scanned assay certificates, digital assays and technical reports. No twin holes have been reported from historical or more recent drilling programs. For recent programs, drilling and assay information was recorded digitally, verified by company geologists, and securely stored in electronic databases with limited access to ensure data integrity. No adjustments or calibration factors have been applied to assay data beyond standard laboratory corrections for detection limits and QA/QC reporting.</p> <p>WIN Assay results were received from the laboratory in CSV and PDF formats, validated, and imported into WIN's secure Geobank Cloud based database hosted by Micromine. Data validation included filter checks and visual review by geological staff. Significant intersections were verified by senior personnel. No data adjustments were made. No twin holes were drilled.</p>
Location of data points	<p>Historic Historic collar coordinates were originally surveyed and recorded in a local grid system, which was subsequently converted to MGA94 Zone 50S for consistency with current regional datasets. Survey control for historical drilling programs was carried out using a combination of differential GPS (DGPS) and total station methods, providing high accuracy for collar positions. Downhole surveys were undertaken at various depth intervals across different drilling campaigns. Historic programs utilised Eastman Single-Shot Cameras, while the 2020 drilling program employed a north-seeking gyroscopic tool, delivering higher-precision orientation data aligned to True North. Topographic control was derived from digital terrain models and hand-held GPS collar pickups, considered adequate for the current stage of exploration and resource definition. Verification and conversion of historical collar locations into the current coordinate framework are ongoing. The positional accuracy of earlier datasets is regarded as approximate but sufficient for the purpose of current exploration and reporting.</p> <p>WIN Collar positions were surveyed using an RTK DGPS (MGA94 Zone 50S). Downhole surveys were collected using an Axis north-seeking gyro tool at collar, 15-30 m intervals, and end-of-hole, referencing true north. Topography was derived from recent collar surveys, supported by historic datasets. Positional accuracy and topographic control are considered adequate. Underground samples were photographed and position of the sample location generated from measured distance from survey stations underground.</p>
Data spacing and distribution	<p>Drillhole spacing across the project varies between exploration campaigns, reflecting distinct objectives and stages of project development. Historical drilling was completed on a range of patterns, typically from 20 m to 80 m along strike and down section, which is considered appropriate for early-stage exploration and delineation of mineralised trends. The current drilling program was designed to infill historical data and enhance geological interpretation. Nominal section spacing includes approximately 10 x 10 m for grade control drilling, 20 x 20 m for resource definition, and up to 40 x 40m for broader exploration and resource extension. This approach ensures targeted data density proportional to the purpose of each drilling phase.</p> <p>Overall drillhole distribution and sample density are sufficient to establish geological and grade continuity consistent with the requirements for Mineral Resource estimation and mine planning.</p> <p>No sample compositing has been applied beyond standard downhole geological intervals.</p> <p>The current data spacing and distribution are deemed appropriate for the style and geometry of mineralisation present and conform to accepted industry standards for reliable geological and grade continuity assessment.</p> <p>Underground sampling N/A</p>
Orientation of data in relation to geological structure	<p>Historic The orientation and design of drilling programs were guided by geological mapping, structural interpretations and the documented layout of historical underground mine workings, which provided key controls for defining the strike and dip of mineralised lodes. The majority of the drilling was planned, where practical, to intersect the primary mineralised</p>



2 June 2026

For personal use only

Section 1 Sampling Techniques and Data – Radio Gold Project	
Criteria	Commentary
	<p>zones close to perpendicular dip at -60° to best align with close to true width, in accordance with the orientation of workings, minimising downhole sampling bias and improving representativity. Historic underground developments—including drives, crosscuts, and stopes—were used to validate the orientation of interpreted lodes and inform subsequent drillhole planning. More recent drilling (including the 2020 campaign) utilised updated geological and structural models, incorporating data from both modern drilling and observed mine exposures, to optimise intersection angles and accurately delineate mineralised bodies. Overall, the alignment between drilling orientation, geological structures, and historic workings is well established, and the data is considered sufficiently representative for confident interpretation and ongoing exploration.</p> <p>WIN The orientation and design of drilling programs were guided by geological mapping, structural interpretations and the documented layout of historical underground mine workings, which provided key controls for defining the strike and dip of mineralised lodes. The majority of the drilling was planned, where practical, to intersect the primary mineralised zones close to perpendicular dip at -60° to best align with close to true width, in accordance with the orientation of workings, minimising downhole sampling bias and improving representativity. Historic underground developments—including drives, crosscuts, and stopes—were used to validate the orientation of interpreted lodes and inform subsequent drillhole planning. Overall, the alignment between drilling orientation, geological structures, and historic workings is well established, and the data is considered sufficiently representative for confident interpretation and ongoing exploration. Surface sampling vein thickness and orientation was logged.</p>
Sample security	<p>Historic Historical sampling was managed by site geological teams under supervision, with samples stored on site prior to transport to commercial laboratories. Original records of specific chain-of-custody arrangements have not been recovered, and procedural details are therefore unverified.</p> <p>WIN WIN practices industry standards with individual samples packed into poly weave bags then placed into a larger bulka bag for transport to the assay laboratory. WIN delivers its samples to the lab without the use of external transport parties. Therefore, sample security is not considered to be a risk to the Project.</p>
Audits or reviews	<p>Historic Internal data validation checks have been undertaken during compilation of available historic datasets to identify inconsistencies in collar coordinates, downhole surveys and assay intervals. The Competent Person has reviewed available information and considers the overall quality of data management and verification appropriate for exploration reporting.</p> <p>WIN Internal data validation checks have been undertaken to identify inconsistencies in collar coordinates, downhole surveys and assay intervals. Any issues are flagged and resolved before being committed to the database. The Competent Person has reviewed available information and considers the overall quality of data management and verification appropriate for exploration and resource reporting.</p>

Section 2 Reporting of Exploration Results – Radio Gold Project																													
Criteria	Commentary																												
Mineral tenement and land tenure status	<p>WIN Metals has executed binding agreements to acquire 100% of the Radio Gold Project and currently holds 100% beneficial interest; transfer of legal title from Top Global Mining Pty Ltd is being registered with DMPE. The tenement is in good standing. No known impediments to activity exist. Environmental and heritage obligations have been addressed through consultation with relevant stakeholders.</p> <table border="1"> <thead> <tr> <th>Tenement</th> <th>Type</th> <th>Status</th> <th>WIN %</th> <th>Grant Date</th> <th>End Date</th> <th>Area Ha</th> </tr> </thead> <tbody> <tr> <td>M 77/633</td> <td>Mining Lease</td> <td>Granted</td> <td>100</td> <td>24/08/2015</td> <td>24/08/2036</td> <td>980</td> </tr> <tr> <td>P 77/4492</td> <td>Prospecting Licence</td> <td>Granted</td> <td>100</td> <td>31/07/2022</td> <td>31/07/2026</td> <td>12</td> </tr> <tr> <td>L 77/81</td> <td>Miscellaneous Licence</td> <td>Granted</td> <td>100</td> <td>18/01/1995</td> <td>18/01/2030</td> <td>6</td> </tr> </tbody> </table> <p>WIN Metals has executed binding agreements to acquire 100% of the Radio Gold Project, with transfer of legal title from Top Global Mining Pty Ltd currently being registered with DMPE. All tenements are in good standing.</p>	Tenement	Type	Status	WIN %	Grant Date	End Date	Area Ha	M 77/633	Mining Lease	Granted	100	24/08/2015	24/08/2036	980	P 77/4492	Prospecting Licence	Granted	100	31/07/2022	31/07/2026	12	L 77/81	Miscellaneous Licence	Granted	100	18/01/1995	18/01/2030	6
Tenement	Type	Status	WIN %	Grant Date	End Date	Area Ha																							
M 77/633	Mining Lease	Granted	100	24/08/2015	24/08/2036	980																							
P 77/4492	Prospecting Licence	Granted	100	31/07/2022	31/07/2026	12																							
L 77/81	Miscellaneous Licence	Granted	100	18/01/1995	18/01/2030	6																							
Exploration done by other parties	<p>Modern exploration and drilling at the project area commenced in 1985 and has since been conducted by several parties, comprising rotary air blast (RAB), reverse circulation (RC), and diamond drilling (DD) programs across multiple campaigns.</p> <p>The table below summarises the drilling activities completed by previous operators:</p>																												



2 June 2026

Section 2 Reporting of Exploration Results – Radio Gold Project																																							
Criteria	Commentary																																						
	<table border="1"> <thead> <tr> <th>Year</th> <th>Company</th> <th>Drilling Type(s)</th> <th>Holes</th> <th>Metres Drilled</th> </tr> </thead> <tbody> <tr> <td>1985</td> <td>Golden Valley Mines</td> <td>RAB</td> <td>120</td> <td>796</td> </tr> <tr> <td>1986–1987</td> <td>Troy Resources NL</td> <td>RC</td> <td>51</td> <td>1,366</td> </tr> <tr> <td>1995–1996</td> <td>Sons of Gwalia (Burmine)</td> <td>RAB and RC</td> <td>137</td> <td>8,743</td> </tr> <tr> <td>2004–2010</td> <td>Gryphon Minerals Ltd</td> <td>RAB, RC, and DD</td> <td>117</td> <td>4,762</td> </tr> <tr> <td>2013</td> <td>Southern Cross Goldfields Ltd</td> <td>RC and DD</td> <td>9</td> <td>807</td> </tr> <tr> <td>2020</td> <td>Radio Gold Pty Ltd</td> <td>RC</td> <td>17</td> <td>1,997</td> </tr> </tbody> </table> <p>Gryphon Minerals (2005) Aeromagnetic target generation -target based on structural interpretation of aeromagnetic data only. A simple structural interpretation undertaken to try and explain the spatial distribution of existing deposits within the Southern Cross region.</p> <p>Gryphon Minerals (2005) A detailed mapping and geological study undertaken by Dr F. Vanderhor of Davis and Vanderhor Consultants. A detailed geological map for the Radio Mine area prepared for identifying potential targets for follow up testing. The study area encompassed 35 km² including and surrounding the Radio tenements.</p> <p>Gryphon Minerals (2006) A complete historical review of the Queenslander prospect. The Queenslander is a parallel lode to the Radio Deposit located a few hundred metres to the north.</p> <p>Gap Geophysics Australia of Brisbane (2007) through Southern Geoscience Consultants in Perth were contracted to complete a Sub-Audio Magnetics survey over the Radio Lode within M77/633. A total of 46-line kilometres covering an area of 2.3 km² at 50 m line spacing were surveyed. The survey tested the technique for mapping the Radio Lode through the granitoids host. Narrow quartz vein and cross cutting structures were identifiable and mapped for the first time.</p>				Year	Company	Drilling Type(s)	Holes	Metres Drilled	1985	Golden Valley Mines	RAB	120	796	1986–1987	Troy Resources NL	RC	51	1,366	1995–1996	Sons of Gwalia (Burmine)	RAB and RC	137	8,743	2004–2010	Gryphon Minerals Ltd	RAB, RC, and DD	117	4,762	2013	Southern Cross Goldfields Ltd	RC and DD	9	807	2020	Radio Gold Pty Ltd	RC	17	1,997
Year	Company	Drilling Type(s)	Holes	Metres Drilled																																			
1985	Golden Valley Mines	RAB	120	796																																			
1986–1987	Troy Resources NL	RC	51	1,366																																			
1995–1996	Sons of Gwalia (Burmine)	RAB and RC	137	8,743																																			
2004–2010	Gryphon Minerals Ltd	RAB, RC, and DD	117	4,762																																			
2013	Southern Cross Goldfields Ltd	RC and DD	9	807																																			
2020	Radio Gold Pty Ltd	RC	17	1,997																																			
Geology	See Regional Geology, Local Geology and Geology Interpretation sections within the body of this ASX announcement.																																						
Drill hole information	<p>A summary of all material drillhole information relating to the reporting of Exploration Results is provided in the body of the announcement, including:</p> <ul style="list-style-type: none"> • Easting and northing of drillhole collars (MGA94 Zone 50S) • Elevation (RL) of drillhole collars • Dip and azimuth of holes • Downhole length and interception depth • Total drilled hole length <p>Drillhole collar coordinates and relevant summary tables for all recent and historical drilling have been compiled as part of the analysis, with detailed positional and orientation data included for material holes and significant intersections. Diagrams, maps, and tables in this report depict the locations of all relevant drillholes and cross-sections supporting the geological interpretation.</p>																																						
Data aggregation methods	In reporting exploration results, sample intervals and composited intercepts have been calculated using length-weighted averaging. This approach ensures that longer intervals contribute proportionally to the reported grade, avoiding bias toward shorter, higher-grade sections. All results over 0.5 g/t Au have been re-assayed with the average of the two results reported to reduce impacts of coarse gold leading to a nugget effect. No top cuts or grade capping have been applied to reported results unless explicitly stated in the relevant tables or text. A minimum width of 2 m, use a lower-cut 0.5 g/t Au and allow a maximum of 2 m internal dilution for the significant intercepts. No metal equivalent values are reported. The assumptions and calculation methods used in generating intercepts and composited intervals are consistent with industry best practice																																						
Relationship between mineralisation widths and intercept lengths	Drillholes have been oriented, where practical, to intersect the principal mineralised structures at or near right angles, as determined from geological mapping, cross-section interpretation, and the orientation of historic mine workings. Reported drill intercepts represent downhole lengths; true mineralisation widths are estimated where sufficient structural and orientation data are available. Unless stated otherwise, downhole intervals may exceed true widths depending on the drill angle relative to mineralised lodes. The geometry of mineralisation has been characterised using drilling data in conjunction with underground exposures, enabling reliable estimation of true widths in key areas and minimising sampling bias. The Competent Person considers the relationship between drill orientation, lode geometry, and intercept width to be adequately described for meaningful interpretation of the results.																																						
Diagrams	Appropriate maps, sections and tables are included in the body of the report.																																						
Balanced reporting	All results have been reported with all assays reported within body of the announcement.																																						
Other substantive exploration data	No further exploration data has been collected at this stage.																																						

2 June 2026

Section 2 Reporting of Exploration Results – Radio Gold Project	
Criteria	Commentary
Further work	Refer to the body of the report.

Section 3 Estimation and Reporting of Mineral Resources	
Criteria	Commentary
Database integrity	<p>The drillhole database for the Radio Gold Project has been compiled and managed by multiple operators over time, with the current dataset acquired from Top Global Pty Ltd and now hosted in WIN’s Geobank cloud-based geological data management system. Upon acquisition and migration into WIN’s internal database, extensive validation and compilation work was completed by WIN’s technical team, in collaboration with external consultant Amanda Prabhavalkar of Auram Resources, to verify source authenticity and database integrity.</p> <p>This work included systematic validation of historical government datasets, assay files, drilling metadata and historical mine plans against primary records, together with the normalisation, consolidation and migration of multiple legacy databases into a single, auditable Geobank environment. Relevant exploration reports were retrieved from the WAMEX system, and original laboratory certificates were obtained to confirm assay values, with spot checks identifying no material discrepancies.</p> <p>WIN geologists control all subsequent data uploads and exports, including compilation of QAQC records, and drillhole data used for estimation were extracted directly as CSV files from the validated database.</p> <p>In 2024, collar RLs for all drillholes were updated based on a drone survey, and these revised elevations have been incorporated into the current model. Overall, this comprehensive QA/QC and data migration program has materially increased confidence in the integrity, completeness and suitability of the database for Mineral Resource estimation.</p>
Site visits	<p>The Competent Person, William Stewart, has undertaken site visits to the Radio Gold Project and was directly responsible for supervising drilling and sampling during the recent program. These visits included inspection of drill collar locations, drilling operations, sampling procedures and site infrastructure, as well as review of the local geology and style of mineralisation.</p> <p>Observations made during these visits confirm that drilling, sampling and survey practices were carried out in accordance with industry standards and Company protocols. This on-site involvement provides a high level of confidence that the data used for the Mineral Resource estimate are reliable and that the geological interpretation is reasonable.</p>
Geological interpretation	<p>Gold mineralisation at Radio is primarily hosted within two narrow, high-grade quartz lodes, the Main (footwall) Lode and the East (hanging-wall) Lode, developed within sheared granite along the margin of the greenstone belt. These subparallel lodes strike northeast and dip approximately 30–60° to the east-southeast, with continuity demonstrated over roughly 130 m underground and up to 700 m along strike at surface. The lodes comprise laminated to massive quartz veins within sericite-altered granitic gneiss, typically 0.2–1.0 m wide, with local thickening in dilation zones. The vein system forms en-echelon arrays and stacked mineralised shoots, generally 100–300 m in length, which commonly pitch obliquely to the main lode trend, reflecting a structurally complex brittle–ductile shear system. Gold occurs predominantly as coarse, free gold, with accessory pyrite, galena and arsenopyrite, consistent with an orogenic quartz-vein style. Four principal mineralised zones are recognised at the Radio Gold Project:</p> <ul style="list-style-type: none"> • Radio Main – The central and most developed zone, comprising two closely spaced, subparallel en-echelon lodes (Main and East), positioned approximately 1–5 m apart. These lodes form the core of historical production and remain the primary focus for ongoing resource definition. • Radio Repeater – Located immediately north of Radio Main and interpreted as a continuation of the main mineralised system, separated by a mafic intrusive body that forms a largely barren structural partition between the two mineralised corridors. • Radio South / Green Harp – Situated south of the main trend and comprising multiple steeply dipping (approximately 60–80°) southeast-dipping lodes. Their distinct orientation relative to the Main and East lodes suggests a separate, though related, deformation event controlling gold emplacement. • Mill – A thin, near-surface, flat-lying veneer of gold-bearing material from surface to roughly 2.5 m depth, interpreted to be related to historical processing and secondary dispersion rather than primary lode mineralisation. <p>Geological logging and gold assay data from drillholes were used to define mineralised domains. For some historical drillholes incorporated in the Mineral Resource estimate, geological logs are absent; in these cases, gold assay intervals alone were used to guide the construction of mineralised wireframes. The deposit has been subdivided into nine mineralised domains, with estimation domains constructed by manually selecting intervals based on a combination of gold grade (nominally above 0.2 ppm Au) and logged geology, particularly the presence of quartz veining. Intervals containing quartz veining confirmed from chip tray photography were also included, even where corresponding gold grades were below the nominal 0.2 ppm Au threshold, to maintain geological continuity. Drilling intersected the mineralisation using a combination of vertical (90°) and inclined (approximately 60°) holes across a mineralised system dipping around 42–45°, which is considered adequate to provide representative sampling and intercept geometry. Given the long history of mining at Radio, the geology and structural controls on mineralisation</p>

For personal use only

Section 3 Estimation and Reporting of Mineral Resources																																																				
Criteria	Commentary																																																			
	are well understood, and no alternative geological interpretations have been adopted for the current Mineral Resource Estimate.																																																			
Dimensions	<p>The modelled Radio mineralisation comprises four main zones: Radio, Repeater, Radio South / Green Harp and Mill.</p> <ul style="list-style-type: none"> Radio – The Main Lode has been defined from drilling and underground mining data, with a maximum strike length of approximately 380 m and a down-dip extent of around 315 m, and typical true widths of 0.2–3.0 m. The adjacent East Lode, also defined from drilling and underground development, has a similar maximum strike length of about 380 m, a down-dip extent of approximately 320 m and typical widths of 0.2–2.0 m. Repeater – The Repeater lodes are defined by drilling over a maximum strike length of roughly 130 m and a down-dip extent of about 195 m. The mineralisation outcrops at surface in several shallow excavations, with typical widths of 0.2–3.0 m. Radio South/Green Harp – The Radio South lodes, interpreted from drilling, extend for up to 105 m along strike and approximately 175 m down-dip, with mineralisation locally exposed in shallow surface workings and widths generally between 1.0–5.0 m. The Green Harp lodes have a maximum strike extent of about 75 m and a down-dip extent of around 145 m, with limited surface exposure and typical widths of around 1.0m. Mill – The Mill domain comprises a thin, flat-lying veneer of gold-bearing material from surface, typically 0.5–2.5 m thick, occurring in two zones with an approximate areal extent of 50 m by 100 m each. 																																																			
Estimation and modelling techniques	<p>Mineral resource modelling and grade estimation were completed using Micromine software. Nine mineralised domains were interpreted to honour the spatial distribution of gold grades within the geometry of the quartz vein systems. Estimation domains were constructed by manually selecting intervals based on a combination of gold grade (nominally above 0.2 ppm Au) and logged geology, particularly the presence of quartz veining; intervals with quartz veining confirmed from core photography were also included even where corresponding grades fell below the nominal 0.2 ppm Au threshold.</p> <p>Gold grades (Au_ppm) were interpolated using an inverse distance weighted cubed (IDW³) algorithm. Sample data were composited to 1 m downhole intervals prior to estimation. High-grade capping thresholds were evaluated on a domain-by-domain basis, and separately for drill and face samples, using log-probability plots, histograms and related statistics. Top cuts of 100 g/t Au were applied to the Main, East and Repeater lodes. A uniform 100 g/t Au cap was adopted across both face and drillhole datasets to minimise undue influence from short-interval, visually targeted face samples.</p> <p>The block model employed a parent cell size of 5 m (E) x 10 m (N) x 10 m (Z), with sub-blocks down to 0.3125 m x 0.625 m x 0.625 m used to accurately represent narrow lodes and domain boundaries. Grades were estimated into the parent blocks, and the model was rotated 60° clockwise (azimuth N20) to align with the strike of the mineralisation. Estimation domains were coded into the block model so that, for each lode, only samples within the corresponding mineralised wireframe were used to estimate grades in that domain.</p> <p>Anisotropic search ellipsoids were defined for each domain (Main, East, Repeater, Radio South, Green Harp, Mill) with orientations reflecting the interpreted dip, dip direction and plunge of mineralisation. Grade estimation was carried out in three successive search passes with ellipsoid radii of approximately 45 m x 40 m x 10 m (Pass 1), 60 m x 60 m x 10 m (Pass 2) and 120 m x 90 m x 20 m (Pass 3). A sector-based (octant) search strategy was used, with minimum and maximum sample and hole constraints adjusted by pass to ensure a balanced spread of informing data. Discretisation was set at 1 x 1 x 1 (no internal sub-point discretisation).</p> <p>Search orientations used for each domain</p> <table border="1"> <thead> <tr> <th rowspan="2">Domain</th> <th colspan="3">Search Ellipsoid</th> </tr> <tr> <th>Dip Dir</th> <th>Dip</th> <th>Pitch</th> </tr> </thead> <tbody> <tr> <td>East_2</td> <td>113.2</td> <td>37.7</td> <td>77.2</td> </tr> <tr> <td>East</td> <td>113.2</td> <td>37.7</td> <td>77.2</td> </tr> <tr> <td>Green Harp</td> <td>120.6</td> <td>47.3</td> <td>106.7</td> </tr> <tr> <td>Main</td> <td>117.3</td> <td>37.1</td> <td>101</td> </tr> <tr> <td>Mill</td> <td>138.4</td> <td>0</td> <td>65.6</td> </tr> <tr> <td>Mill 2</td> <td>138.4</td> <td>0</td> <td>58</td> </tr> <tr> <td>Radio South_3</td> <td>123.7</td> <td>56.8</td> <td>58</td> </tr> <tr> <td>Radio_South</td> <td>119.1</td> <td>47.6</td> <td>67.7</td> </tr> <tr> <td>Repeater_1</td> <td>122.7</td> <td>39.3</td> <td>101</td> </tr> <tr> <td>Repeater_2</td> <td>122.7</td> <td>39.3</td> <td>101</td> </tr> <tr> <td>Repeater_3</td> <td>122.7</td> <td>39.3</td> <td>101</td> </tr> </tbody> </table>	Domain	Search Ellipsoid			Dip Dir	Dip	Pitch	East_2	113.2	37.7	77.2	East	113.2	37.7	77.2	Green Harp	120.6	47.3	106.7	Main	117.3	37.1	101	Mill	138.4	0	65.6	Mill 2	138.4	0	58	Radio South_3	123.7	56.8	58	Radio_South	119.1	47.6	67.7	Repeater_1	122.7	39.3	101	Repeater_2	122.7	39.3	101	Repeater_3	122.7	39.3	101
Domain	Search Ellipsoid																																																			
	Dip Dir	Dip	Pitch																																																	
East_2	113.2	37.7	77.2																																																	
East	113.2	37.7	77.2																																																	
Green Harp	120.6	47.3	106.7																																																	
Main	117.3	37.1	101																																																	
Mill	138.4	0	65.6																																																	
Mill 2	138.4	0	58																																																	
Radio South_3	123.7	56.8	58																																																	
Radio_South	119.1	47.6	67.7																																																	
Repeater_1	122.7	39.3	101																																																	
Repeater_2	122.7	39.3	101																																																	
Repeater_3	122.7	39.3	101																																																	

For personal use only



2 June 2026

Section 3 Estimation and Reporting of Mineral Resources																																																								
Criteria	Commentary																																																							
	<p>Search pass distances</p> <table border="1"> <thead> <tr> <th>Pass</th> <th>Axis 1</th> <th>Axis 2</th> <th>Axis 3</th> </tr> </thead> <tbody> <tr> <td>1</td> <td>45</td> <td>40</td> <td>10</td> </tr> <tr> <td>2</td> <td>60</td> <td>60</td> <td>10</td> </tr> <tr> <td>3</td> <td>120</td> <td>90</td> <td>20</td> </tr> </tbody> </table> <p>Number of samples for each search pass:</p> <table border="1"> <thead> <tr> <th rowspan="2">Pass</th> <th colspan="2">Samples</th> <th colspan="2">Sectors</th> <th colspan="3">Holes</th> </tr> <tr> <th>Min</th> <th>Max</th> <th>Min Sectors Filled</th> <th>Max Sectors</th> <th>Min Holes</th> <th>Min Samples per Holes</th> <th>Max Samples per Hole</th> </tr> </thead> <tbody> <tr> <td>1</td> <td>4</td> <td>12</td> <td>Octants</td> <td>3</td> <td>4</td> <td>1</td> <td>3</td> </tr> <tr> <td>2</td> <td>3</td> <td>12</td> <td>Octants</td> <td>2</td> <td>3</td> <td>1</td> <td>3</td> </tr> <tr> <td>3</td> <td>1</td> <td>24</td> <td>Octants</td> <td>1</td> <td>1</td> <td>1</td> <td>3</td> </tr> </tbody> </table> <p>Validation included comparison of composite statistics with block model statistics at both global and domain scales, visual inspection of cross-sections and plans showing drillhole grades versus block estimates and checks of wireframe volumes against block model volumes. These checks indicate that the block model reasonably reflects the informing data and the interpreted geometry of the mineralised lodes, and the estimation results are considered suitable for Mineral Resource reporting.</p>	Pass	Axis 1	Axis 2	Axis 3	1	45	40	10	2	60	60	10	3	120	90	20	Pass	Samples		Sectors		Holes			Min	Max	Min Sectors Filled	Max Sectors	Min Holes	Min Samples per Holes	Max Samples per Hole	1	4	12	Octants	3	4	1	3	2	3	12	Octants	2	3	1	3	3	1	24	Octants	1	1	1	3
Pass	Axis 1	Axis 2	Axis 3																																																					
1	45	40	10																																																					
2	60	60	10																																																					
3	120	90	20																																																					
Pass	Samples		Sectors		Holes																																																			
	Min	Max	Min Sectors Filled	Max Sectors	Min Holes	Min Samples per Holes	Max Samples per Hole																																																	
1	4	12	Octants	3	4	1	3																																																	
2	3	12	Octants	2	3	1	3																																																	
3	1	24	Octants	1	1	1	3																																																	
Moisture	Tonnages have been estimated on a dry basis.																																																							
Cut-off parameters	The cut-off grade used is based on typical cut-off grades applied to low strip ratios open pit mining or narrow vein underground scenarios. The reported cut-off grade of 0.5 g/t Au has been used for an open pit mining scenario to a depth of 50 m below surface nominated at 300 mRL and 1.0 g/t Au below this for potential underground mining operations. This is regarded as being more appropriate for reporting this resource.																																																							
Mining factors or assumptions	<p>No specific mining factors or economic modifying assumptions have been applied in the estimation or reporting of the Mineral Resource. The Mineral Resource has been constrained and reported on a purely geological and geostatistical basis, although it is recognised that future extraction may involve a combination of open pit and underground mining methods appropriate to narrow vein gold deposits.</p> <p>Historical mine plans covering operations from 1913 to 1973 have been digitised and registered in Micromine and Deswik 3D, and cross-checked against modern survey data. Only the Level 9 (Main and East lodes south) and Level 10 (Main and East lodes south) workings have been surveyed using modern techniques by Mine Survey Plus, with the resulting strings incorporated into the historical void wireframes; for earlier levels, the exact location and geometry of voids remain approximate but are considered broadly consistent with the mineralised wireframes. Subsequent development on the 1315 and 1312 levels by Nufortune between April 2022 and June 2023 has been accurately surveyed using modern methods.</p> <p>All known underground development, stopes and open pits have been modelled and flagged in the block model. A dedicated "MINED" field was created, and all blocks intersecting these mined-out voids were assigned a value of 1 and excluded from Mineral Resource reporting and classification.</p>																																																							
Metallurgical factors or assumptions	<p>Metallurgical testwork completed to date indicates that Radio ore is amenable to conventional gold processing, with no material issues identified in relation to gold recovery.</p> <p>In March 2018, a bottle-roll cyanide leach test on representative Radio ore returned gold recoveries consistent with industry-standard cyanide leach performance. In the same year, a parcel of approximately 1,286 tonnes of ore mined by Resource and Energy Group was toll treated through Barto Gold's Marvel Loch processing plant, with no gold recovery issues reported.</p> <p>Further confirmatory testwork was completed in May 2021 at ALS, where gravity leach testing of Radio ore recovered 85.9% of the gold into a low-mass gravity concentrate. This high gravity recovery supports the presence of liberated coarse free gold and confirms the potential for effective gold recovery using conventional gravity and cyanide leach flowsheets.</p>																																																							
Environmental factors or assumptions	No specific environmental modifying factors or assumptions have been applied in the Mineral Resource modelling. Mining and processing activities have occurred at Radio Gold since approximately 1911, and the site has an established disturbance footprint that includes historical waste rock dumps and tailings storage facilities. The mine is currently on care and maintenance, with existing mine infrastructure and landforms expected to inform future environmental assessments and permitting requirements rather than constrain the current Mineral Resource estimate.																																																							
Bulk density	Bulk density determinations were completed on selected drill core samples using the water immersion method at ALS in April 2018. The results returned average bulk densities of 2.62t/m ³ for the Main Lode and 2.64t/m ³ for the East Lode. Given the limited number of measurements, a conservative uniform bulk density of 2.62t/m ³ has been applied to all fresh mineralised and waste domains.																																																							

For personal use only

Section 3 Estimation and Reporting of Mineral Resources	
Criteria	Commentary
	A weathering surface was interpreted from geological logging and coded into the block model. All material above this surface has been assigned a bulk density of 2.50 t/m ³ . The radio weathered material is atypical of the Southern Cross and Goldfields area where partially oxidise granite is found with 1m of the surface and displays joint and fracture oxidation only with minor pervasive weathering within the granite. Transported material including the historic mill contamination have been assigned a lower bulk density of 1.70 t/m ³ to reflect their loose, clay and gravel based nature.
Classification	<p>The Mineral Resource has been classified in accordance with the JORC Code (2012) based on drillhole spacing, proximity to underground development, density of face sampling, geological and mineralisation continuity, and the estimation search pass applied to each block. Classification envelopes were interpreted in Micromine and coded into the block model.</p> <p>No material has been classified as Measured.</p> <p>Indicated Mineral Resources are defined where drill spacing is approximately 20m, blocks lie within about 15m of underground development, level face sampling data are available, geological continuity is high and blocks are estimated in the first search pass.</p> <p>Inferred Mineral Resources are defined where drill spacing is generally greater than 20m and typically less than 40m, geological continuity is moderate and blocks are estimated in the second or third search passes or validation of the drilling is moderately reflected in the estimate and cannot be classified as Indicated.</p> <p>No material remains unclassified, as mineralised wireframes were constrained to within approximately 40m of a drillhole.</p> <p>All material adjacent to historical mining voids (including skins and pillars) has been conservatively classified as Inferred so that it is not relied upon for detailed mine design. A previous 2018 Mineral Resource Estimate reported that these skins and pillars remained accessible following underground inspection, but this has not been used to elevate the current classification.</p>
Audits or reviews	The MRE estimate has been internally reviewed by WIN staff and the Competent Person with no fatal flaws identified and the estimate methodology is deemed appropriate for the style, geometry and continuity of the mineralisation and suitable for public reporting of the Mineral Resource.
Discussion of relative accuracy/confidence	<p>The Mineral Resource estimate is considered to have an appropriate level of confidence to support the reporting of Indicated and Inferred categories, consistent with the quality of the underlying data and the documented history of recent and historical mining at Radio.</p> <p>The estimate is reported as a global Mineral Resource, and the Competent Person has applied classification based on the reliability of the input data, the robustness of the geological interpretation and the suitability of the estimation methodology.</p> <p>A comparison with the January 2026 Mineral Resource Estimate is provided in the body of this report, demonstrating broadly consistent outcomes in terms of contained metal.</p>

For personal use only