

## **APPROVALS GRANTED TO COMMENCE DRILLING OF PRIORITY TENNANT CREEK COPPER-GOLD TARGETS WITHIN EAST TENNANT CORRIDOR**

### **- Maiden post-acquisition drilling program of up to 5,000m designed to test standout Tennant Creek look-alike targets under shallow cover at Kurundi North**

- **Sabre Resources has received approval from the Northern Territory government (Environmental Mining Licence (EML) approval) for a maiden drilling program at the Kurundi North Project, which is part of the East Tennant Ridge Iron-Oxide-Copper-Gold (IOCG) project area<sup>1</sup>. Drilling will commence following approval by Sabre shareholders of the acquisition of Brema Resources and North Tennant Minerals at the upcoming General Meeting on 30 June.**
- **This exciting new program will comprise up to 5,000m of aircore/reverse circulation drilling to test standout Tennant Creek look-alike targets under shallow cover at Kurundi North, 80km southeast of the world-class Tennant Creek Copper-Gold Field which has produced over 5.5Moz of high-grade gold (6.6g/t Au) and 700kt of copper (2% Cu) historically<sup>2</sup> (see Figure 1).**
- **Kurundi North lies directly along strike to the southeast of Tennant Creek, within extensions of a structural corridor which hosts major deposits such as Warrego, which produced 6.8Mt @ 6.6 g/t Au, 1.9% Cu (1.8Moz eq\*)<sup>2</sup> historically and has a further 1.1 Moz eq\*<sup>3,4</sup> in new resources (Figure 1).**
- **Targets to be drill tested demonstrate the gravity-magnetic signature of a 'Tennant-Creek' ironstone-hosted copper-gold system. These drill-ready targets lie under shallow cover below copper-gold-bismuth soil anomalies with a Tennant Creek 'fingerprint' (see Figures 2 and 3).**
- **The Tennant Creek region is experiencing a major renaissance, driven by corporate activity, resource growth and substantial new mining and processing developments. New gold processing facilities have been established by Tennant Creek Consolidated Mining (TCMG)<sup>3</sup>, and South African gold producer Pan African Resources has acquired TCMG<sup>4</sup> for \$54M and is taking over the major tenement holder in the field, Emmerson Resources (ASX:EME)<sup>5</sup>, for \$311M. These developments, combined with major resource expansions at White Devil (EME)<sup>6</sup>, Warrego (TCMG) and Gecko-Orlando (CuFe, ASX:CUF)<sup>7</sup>, and significant new discoveries at Rover 1 (Castille Resources, ASX:CST)<sup>8</sup> and Bluebird (Tennant Minerals, ASX:TMS)<sup>9</sup>, highlight the discovery potential of this major copper-gold terrane - which extends for over 300km under cover east and southeast of Tennant Creek within the East Tennant Ridge high-prospectivity corridor (see Figure 4).**

#### **Sabre Resources CEO, Jon Dugdale, commented:**

*"The receipt of drill permitting from the Northern Territory Government sets us up to commence this new drilling program to test drill-ready Tennant Creek look-alike targets at Kurundi North.*

*The program will commence as soon as Sabre shareholders approve the transformational acquisition of over 4,000km<sup>2</sup> of project areas in the Tennant Creek region, with multiple drill-ready gold and copper-gold targets in extensions and potential repeats of the world-class Tennant Creek Mineral field.*

*First cab off the rank is the drilling at Kurundi North. This will be followed by drill-testing near previous high-grade gold intersections at North Arunta, then deeper drilling of mineralisation intersected in the first stage.*

*The Tennant Creek region is really hotting up, and Sabre is well placed with major new tenement holdings and drill ready targets on identified extensions of this major copper-gold mineral field."*

*\*Gold Equivalent Oz (Au eq.) based on spot gold and copper prices = ((Au g/t x 1 + Cu% x 0.76) x T)/31.1*

For personal use only

Sabre Resources Ltd (“Sabre” or “the Company”), (ASX:SBR), is very pleased to announce that it has received Environmental Mining Licence (EML) permitting approval from the NT Government for an up to 5,000m drilling program to test stand-out Tennant Creek look-alike targets at the Kurundi North Project, in the world-class Tennant Creek copper-gold region of the Northern Territory (see Figure 1).

Kurundi North is located within the highly prospective **East Tennant Ridge Iron-Oxide-Copper-Gold (IOCG) Corridor**<sup>10</sup>, and is one of the key projects which are the subject of binding agreements (**Agreements**) to acquire 80% of Brema Resources Pty Ltd (Brema), the owner of the **East Tennant Ridge Iron-Oxide-Copper-Gold (IOCG) projects**, and 80% of North Tennant Minerals Pty Ltd (North Tennant, or, NTM) the owner of the **North Arunta Gold Project**<sup>1</sup>. The acquisition of these projects is subject to shareholder approval at the upcoming General Meeting (GM) to be held on 30 June.

The combined project areas to be acquired cover nearly 4,000km<sup>2</sup> of highly prospective ground within extensions of major gold and copper mineralised corridors, in the Tennant Creek and North Arunta regions of the Northern Territory (see project locations, Figure 4).

### The Kurundi North Drilling Program

The **Kurundi North Project** lies directly along strike, on extensions of the Navigator and Mary Lane Faults southeast of Tennant Creek (see Figure 1, below). This structural corridor hosts the major deposits of Tennant Creek, including the high-grade **Warrego** gold-copper deposit (6.76Mt @ 6.6g/t Au, 1.9% Cu produced<sup>2</sup>), **Nobles Nob** gold deposit (2Mt @ 17.3 g/t Au produced<sup>2</sup>) and the **Peko** gold deposit (3.7Mt @ 3.5g/t Au, 4% Cu produced<sup>2</sup>).

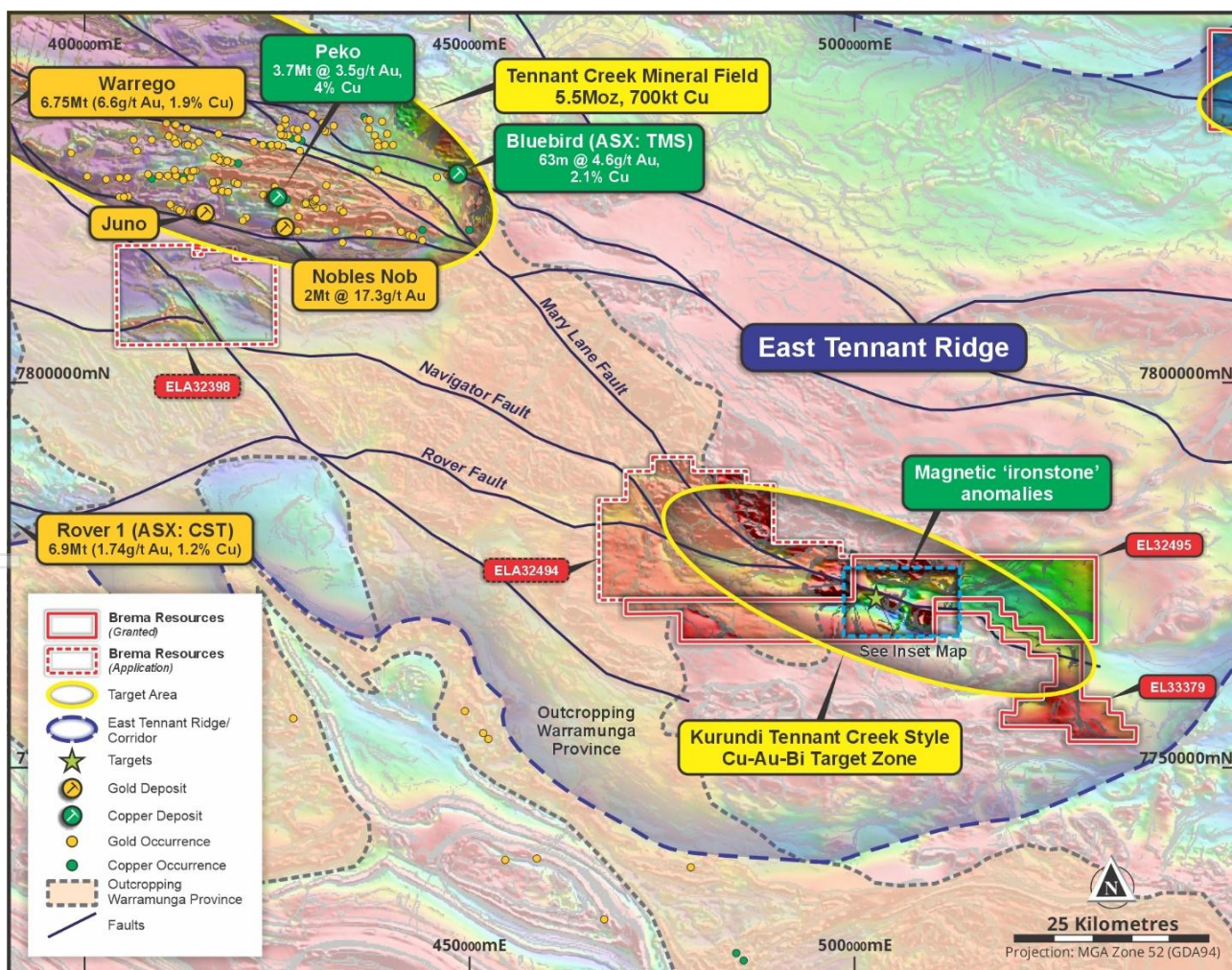


Figure 1: Kurundi North Cu-Au Project on regional magnetics, showing magnetic anomalies in 12km corridor analogous to the Tennant Creek ironstone hosted copper-gold deposits along strike to the northwest

The Kurundi North Tennant Creek look-alike targets were initially identified from regional scale magnetics imagery which showed three distinct positive magnetic anomalies, indicative of ironstone, within a 12km strike-length, northwest-southeast trending structural corridor under shallow cover (see Figure 2, below).

Previous detailed drone magnetics at Kurundi North defined the magnetic anomalies and showed distinct 'breaks' in the magnetic pattern, indicative of (IOCG) mineralisation related alteration within interpreted fault zones which continue within a corridor which links to the Tennant Creek Mineral Field (Figure 1).

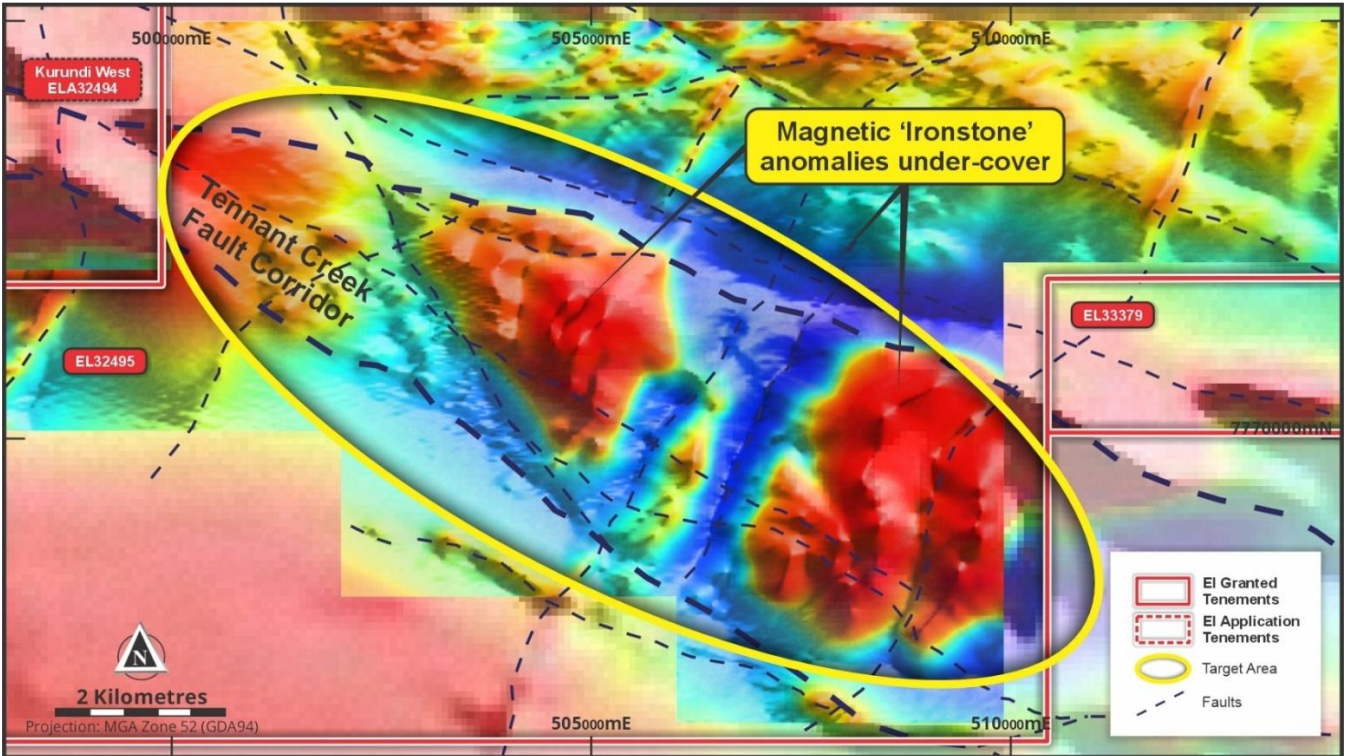


Figure 2: Kurundi North TMI magnetic imagery showing interpreted fault structures and buried 'ironstone' magnetic anomalies (and Tennant Creek style copper-gold target zone)

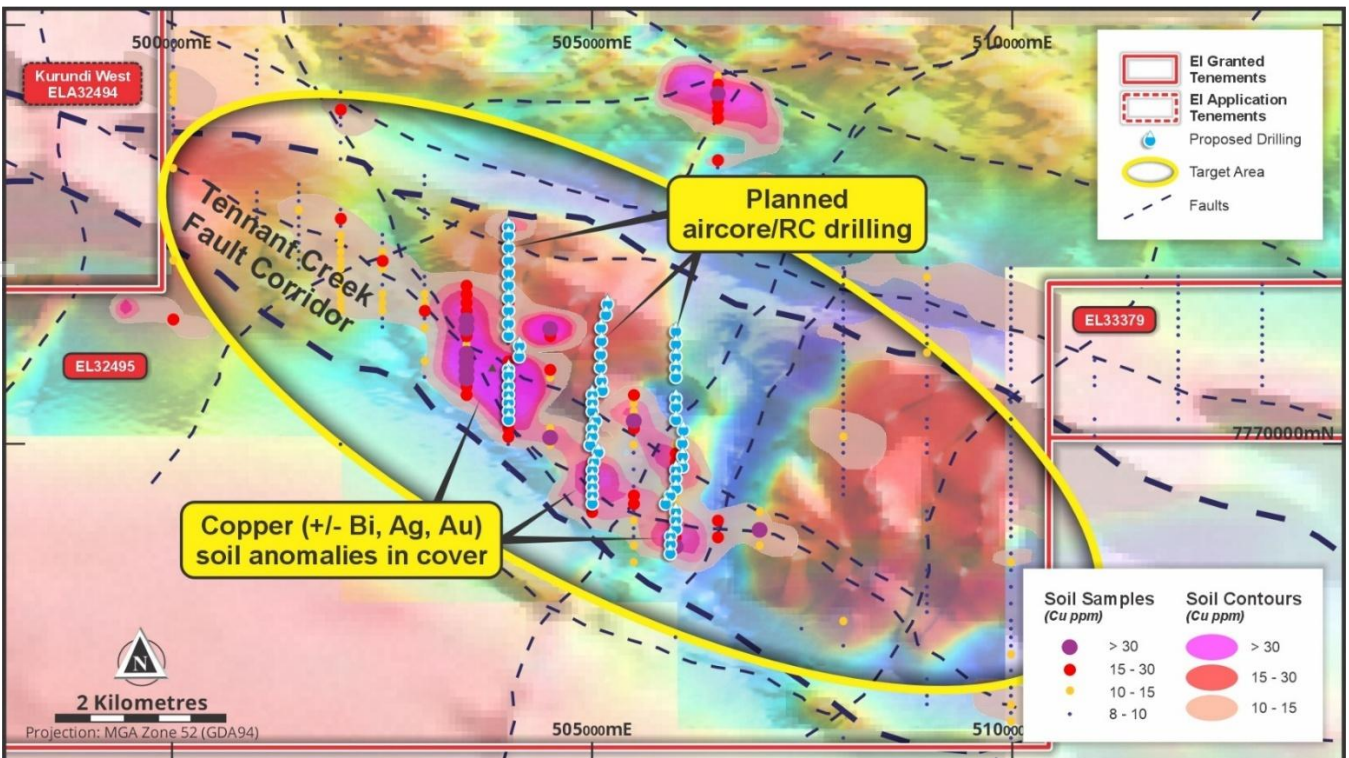


Figure 3: Kurundi TMI magnetic imagery and interpreted fault structures showing copper soil anomaly in cover overlying buried 'ironstone' magnetic anomalies (and Tennant Creek style copper-gold target zone)

Detailed gravity surveys show a 12km strike-length gravity high that crosses the magnetic highs and breaks and remnant negative anomalies, **indicating that the (dense) ironstone continues across the variably magnetic zone** and that the fault-associated magnetic lows and remnant negatives are associated with hematite and re-crystallised magnetite – **a signature indicative of iron-oxide copper-gold mineralization at new discoveries at Tennant Creek such as the White Devil gold deposit of Emmerson Resources (ASX:EME)<sup>6</sup> and the Bluebird Cu-Au discovery of Tennant Minerals (ASX:TMS)<sup>9</sup>.**

Auger soil sampling across the geophysical anomalies produced **highly anomalous copper with supporting bismuth and gold anomalies<sup>1</sup>, over a northwest trending magnetic low/remnant negative interpreted to be hydrothermally altered ironstone** (see Figure 3). This **geophysical and geochemical fingerprint indicates a Tennant Creek style ironstone-copper-gold system under shallow cover.**

The new aircore/RC drilling program at Kurundi North will include three one-kilometre spaced sections for 3,000m to 5,000m of aircore collared RC drilling to test the ironstone-copper-gold targets in Warramunga Formation bedrock. The Warramunga Formation hosts all of the major high-grade gold and copper-gold deposits of Tennant Creek and outcrops to the southwest of the target zone – which lie under transported cover and a veneer of Georgina Basin sedimentary rocks.

Drilling contracts will be finalised over the coming weeks so that the program commences as soon as possible after the General Meeting (GM) to approve the acquisitions on 30th June.

Application has been made to the NT government for 50% drilling funding for a program of follow-up RC/diamond drilling to test copper-gold anomalies identified from this up-coming program.

## About Sabre Resources Existing Northern Territory Projects and Proposed Acquisitions

### East Tennant and North Arunta Project Acquisitions:

The Company recently announced that it had entered into binding agreements to acquire 80% of two companies holding extensive gold and copper-gold project areas within the East Tennant Iron-Oxide-Copper-Gold (IOCG) corridor<sup>10</sup> and the North Arunta Gold Project, located in the World-class Tennant Creek Copper-Gold Region of the Northern Territory (see Figure 4, below, for locations)<sup>1</sup>.

These highly prospective projects include 4,000km<sup>2</sup> of tenements on potential extensions or repeats of major mineralised corridors which have produced over 5.5Moz of gold and 700kt of copper historically<sup>2</sup>

Multiple, drill-ready, gold and copper-gold targets within these key projects areas include:

- The East Tennant Ridge IOCG Projects:** 2,800km<sup>2</sup> portfolio on extensions of East Tennant Ridge IOCG corridor, with major, untested gravity and magnetic anomalies analogous to the Tennant Creek Mineral Field footprint. Key targets include:
  - **Kurundi North**, gravity-magnetic signature of 'Tennant-Creek' ironstone-copper-gold system, along strike from this major mineral field. Drill-ready targets under copper-gold-bismuth soil anomalies overlying covered targets.
  - **Buchanan Prospect:** large un-tested gravity-magnetic IOCG geophysical signature in major fault zone at "spine" of East Tennant Ridge. Olympic Dam scale untested target.
  - **Frewena Dam Cu Prospect:** strong copper mineralisation at surface overlying gravity-magnetic structures in basement. Possible copper leakage from a buried IOCG system.
- The North Arunta Gold Project:** 1,000km<sup>2</sup> tenements on extensions of Kroda Gold Trend, along-strike from high-grade gold intersections such as 12m @ 15.7 g/t Au (Kroda 3)<sup>1</sup> with:
  - Significant historical gold intersections from the Kroda 2 Shear-zone structure including **6m @ 3.5 g/t Au<sup>1</sup>** from 24m in KPD-028 and **3m @ 3.9 g/t Au<sup>1</sup>** from 9m in KPD-035, and,
  - broad gold intersections up to **18m @ 0.32 g/t Au incl. 3m @ 0.79 g/t Au<sup>1</sup>** from Kroda 1,
  - Un-tested extensions of these gold-bearing structures at depth and along strike, with multiple, drill-ready targets indicated by magnetics and anomalous soil geochemistry.

3. Other tenements in **Ngalia Basin/Arunta Block margin**, near Sabre’s existing projects, on extensions of substantial uranium, critical metals and Rare Earth Elements (REE) projects.

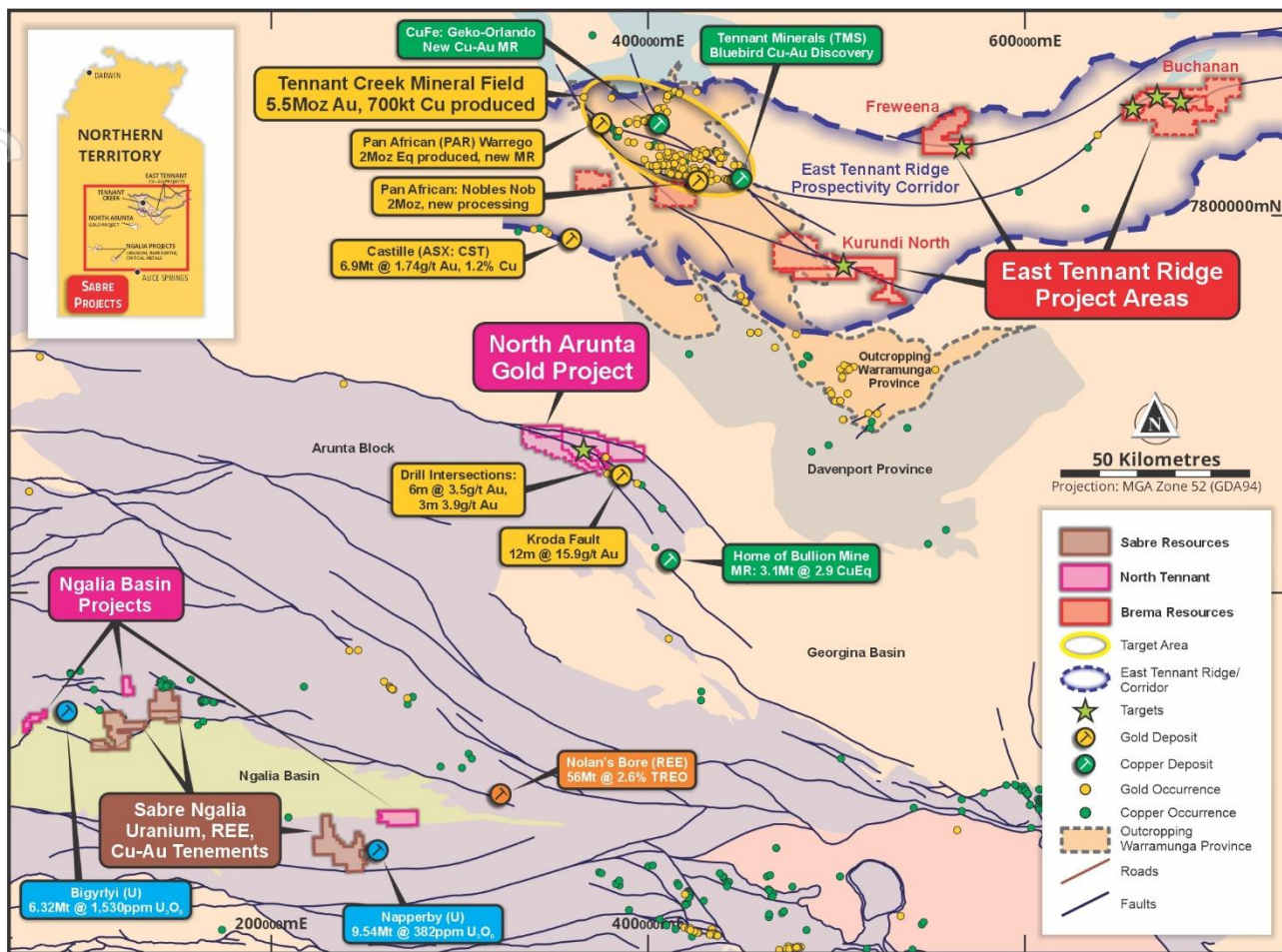


Figure 4: Location of the East Tennant Ridge (Brema) and North Arunta Project (NTM) Gold & Copper-Gold Project Areas

**Sabre Existing Northern Territory Projects – Ngalia Basin and South Arunta:**

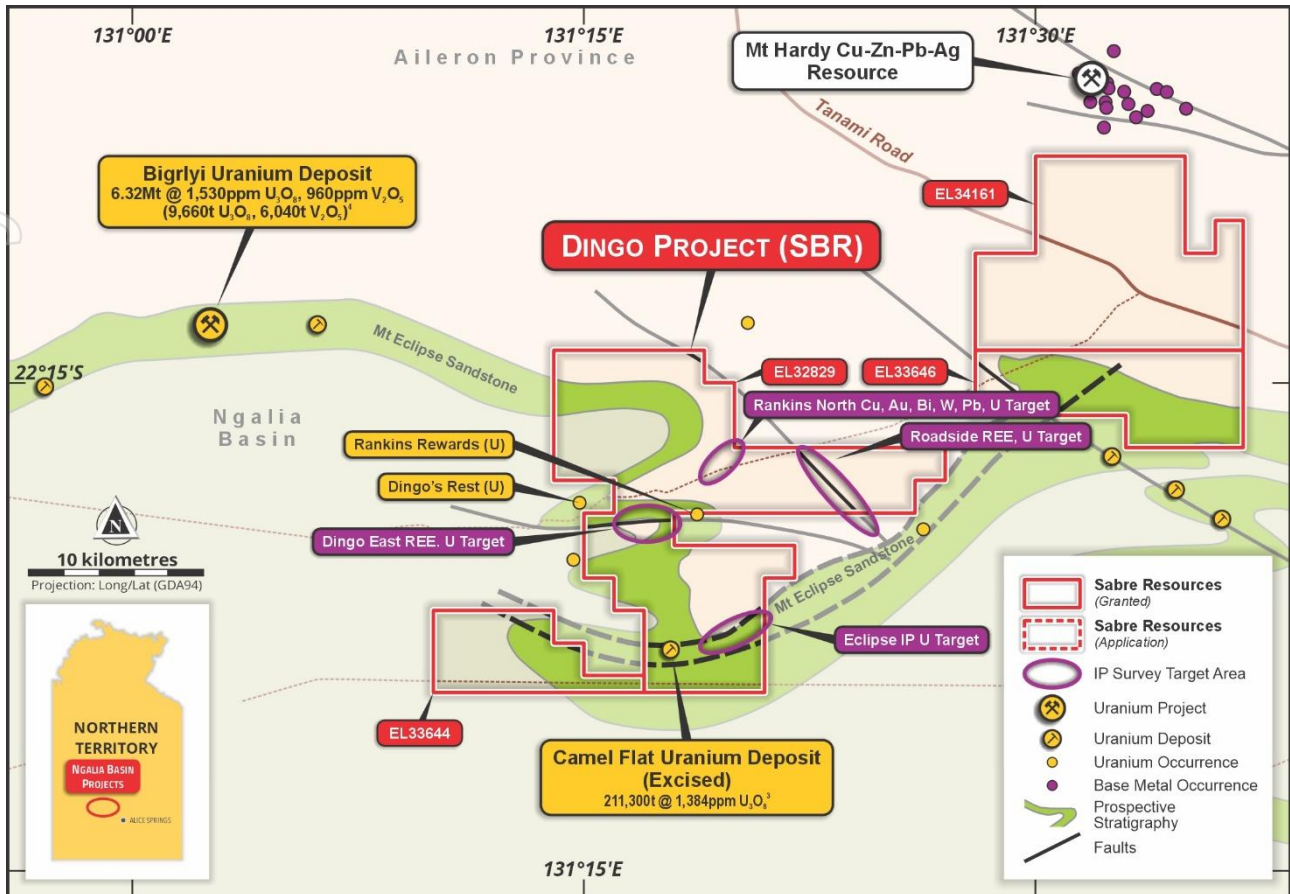
Sabre’s existing projects in the Northern Territory include an extensive, >1,000km<sup>2</sup> tenement package in the Ngalia Basin Uranium Province and southern Arunta Block, 300km north-west of Alice Springs in the Northern Territory (see Figure 4).

The Company is primarily targeting roll-front/tabular sandstone-hosted deposits at Dingo within the Carboniferous-aged Mt Eclipse Sandstone (MES), similar to other uranium resources in the region such as the Bigryli uranium deposit (Mineral Resource: 6.32Mt @ 1,530ppm U<sub>3</sub>O<sub>8</sub>, 960ppm V<sub>2</sub>O<sub>5</sub><sup>11</sup>).

Highly anomalous REE and critical and precious metals results have also been produced in three new target areas at Dingo - Dingo East, Rankins North and Roadside – highlighting potential for these types of deposits which occur in the region (e.g. Nolans Bore REE deposit, resource 56Mt @ 2.6% TREO including 26.4% NdPr/TREO<sup>12</sup>, see Figure 4).

These include a 5km strike-length x 1km wide Total Rare Earth Oxide (TREO) anomaly (>180ppm TREO), at **Dingo East** associated with faulted pegmatites which previously produced strong REE rockchip results of up to **1,283ppm** and **1,365ppm TREO**, and strongly anomalous REE rockchip results from the Roadside Target of up to **1,657ppm TREO**<sup>13</sup> (see Figure 5).

High critical metals auger-soil results of up to **1.22g/t gold**, **1.2% lead**, **170g/t Cu** and rockchips up to **57.5g/t Bi**, **222 g/t Cu** were produced from the **Rankins North Prospect**<sup>14</sup> (see prospect locations on Figure 5, below).



**Figure 5: Ngalia Basin / South Arunta Tenements showing uranium, REE and critical/precious metals prospects**

Further work on the existing projects will include aircore drilling to follow-up the high REE results from Dingo East and Roadside and high-grade critical and precious metals-bearing skarns at Rankins North.

Aircore and/or RC drilling is also planned to test soil covered strong IP chargeability anomalies at Eclipse 1<sup>15</sup>, located within a corridor extending 4km northeast of the excised tenement containing the Camel Flat Inferred Mineral Resource (**211,300t @ 1,384ppm U<sub>3</sub>O<sub>8</sub>**<sup>16</sup>). The IP anomalies may represent eroded carbonaceous/sulphidic horizons in the Mount Eclipse Sandstone (MES) (host of the Bigrlyi and Camel Flat uranium deposits).

Other tenements across the boundary of the Ngalia Basin and the Proterozoic Arunta Block to the north, are targeted for base and precious metals as well as uranium and REEs, including recently granted EL34161, immediately south of the Mt Hardy Cu-Zn-Pb-Ag resource (see Figure 5).

The **Lake Lewis Project** is located on the southern margin of the Ngalia Basin, approximately 150km southeast of the Dingo Project (see Figure 1). The Lake Lewis Project is highly prospective for calcrete uranium-vanadium mineralisation hosted by palaeo-channels analogous to the neighbouring Napperby Inferred Mineral Resource of **9.54Mt at 382ppm U<sub>3</sub>O<sub>8</sub>**<sup>17</sup>.

## References

- <sup>1</sup> Sabre Resources Ltd, 27 April 2026. *Transformational Copper-Gold Acquisition and \$2M Placement*.
- <sup>2</sup> [Portergeo.com.au/database/mineinfo](http://Portergeo.com.au/database/mineinfo). Tennant Creek - Gecko, Warrego, White Devil, Nobles Nob, Juno, Peko, Argo
- <sup>3</sup> Pan African Resources PLC, 2 December 2024. *Pan African Strategic Acquisition of TCMG in Australia*
- <sup>4</sup> Emmerson Resources Ltd (AX:EMR), 30 April 2025. *Commencement Commercial Production at Nobles Nob*
- <sup>5</sup> Emmerson Resources Ltd (AX:EMR), 09 March 2026. *Emmerson to be Acquired by Pan African Resources*
- <sup>6</sup> Emmerson Resources Ltd (AX:EMR) – 15 April 2025 – *White Devil Mineral Resource Grows by 25% to 611 K Oz.*
- <sup>7</sup> CuFe Ltd (ASX:CUF) 18 March 2026: *Orlando Mineral Resource Estimate Update*
- <sup>8</sup> Castille Resources Ltd,(ASX:CSE), 14 November 2022. *Rover 4 Maiden Resource Added to Rover 1*
- <sup>9</sup> Tennant Minerals Ltd (ASX: TMS), 28 October 2025 “*Maiden Bluebird Cu-Au Mineral Resource Plus Extensions*”.

<sup>10</sup> Clark, A. D., Morrissey, L. J., Doublier, M. P., Kositcin, N., Schofield, A., & Skirrow, R. G. (2022). A newly recognised 1860–1840 Ma tectono-magmatic domain in the North Australia Craton: Insights from the Tennant Region, East Tennant area, and the Murphy Inlier. *Precambrian Research*, 375(1-4), 106652.

<sup>11</sup> Energy Metals Ltd, 01 August 2024, Resource Update - Bigryli Project.

<sup>12</sup> Arafura Rare Earths Ltd (ASX:ARU) 7 June 2017: Detailed Resource Assessment Completed (Nolans)

<sup>13</sup> Sabre Resources Ltd, 30 July 2025. Uranium Critical Metals REE Rockchip Results from Dingo.

<sup>14</sup> Sabre Resources Ltd, 28 November 2025. Rare Earth Element, Critical Metals and Gold Results, Dingo Project

<sup>15</sup> Sabre Resources Ltd, 22 January 2025. Imaging of IP data Highlights Uranium Targets at Dingo.

<sup>16</sup> Energy Metals Ltd, 13 February 2014, 626 Tonnes U<sub>3</sub>O<sub>8</sub> Combined Maiden Resource Bigryli Satellite Deposits

<sup>17</sup> Core Lithium Ltd (ASX: CXO), 12 October 2018: Napperby Uranium Resource Update and Increase.

This announcement has been authorised for release by the Board of Directors.

\*\*\*ENDS\*\*\*

### For background, please refer to the Company's website or contact:

Jon Dugdale  
Chief Executive Officer  
Sabre Resources Limited  
+61 (08) 9481 7833

Jeffrey Dawkins or Tanya Newby  
Joint Company Secretaries  
Sabre Resources Limited  
+61 (08) 9481 7833

### Cautionary Statement regarding Forward-Looking information

*This document contains forward-looking statements concerning Sabre Resources Ltd. Forward-looking statements are not statements of historical fact and actual events and results may differ materially from those described in the forward-looking statements as a result of a variety of risks, uncertainties, and other factors. Forward-looking statements are inherently subject to business, economic, competitive, political, and social uncertainties, and contingencies. Many factors could cause the Company's actual results to differ materially from those expressed or implied in any forward-looking information provided by the Company, or on behalf of, the Company. Such factors include, among other things, risks relating to additional funding requirements, metal prices, exploration, development and operating risks, competition, production risks, regulatory restrictions, including environmental regulation and liability and potential title disputes.*

*Forward looking statements in this document are based on the company's beliefs, opinions and estimates of Sabre Resources Ltd as of the dates the forward-looking statements are made, and no obligation is assumed to update forward looking statements if these beliefs, opinions, and estimates should change or to reflect other future developments.*

### Competent Person Statements

*The information in this report that relates to exploration results, metallurgy and mining reports and Mineral Resource Estimates has been reviewed, compiled, and fairly represented by Mr Jonathon Dugdale. Mr Dugdale is the Chief Executive Officer of Sabre Resources Ltd and a Fellow of the Australian Institute of Mining and Metallurgy ('FAusIMM'). Mr Dugdale has sufficient experience, including over 38 years' experience in exploration, resource evaluation, mine geology, development studies and finance, relevant to the style of mineralisation and type of deposits under consideration to qualify as a Competent Person as defined in the 2012 Edition of the Joint Ore Reserves Committee ('JORC') Australasian Code for Reporting of Exploration Results, Minerals Resources and Ore Reserves. Mr Dugdale consents to the inclusion in this report of the matters based on this information in the form and context in which it appears.*

### ASX Listing Rules Compliance

*In preparing this announcement the Company has relied on the announcements previously made by the Company as listed under "References". The Company confirms that it is not aware of any new information or data that materially affects those announcements previously made, or that would materially affect the Company from relying on those announcements for the purpose of this announcement.*