

4 June 2026

## Results Indicate Transitional RIRGS Halo Position at Pilot; Higher-Grade Targets Untested

### Highlights

- **Drilling confirms position within RIRGS model; core remains untested:** Results from RRPT0001 and RRPT0004 are consistent with the **transitional halo** of a RIRGS system, aligned with the preliminary CODES (UTAS) model (ASX: 26 May 2026). The **proximal high-grade Au-Bi-Te-W core remains untested** and represents a priority exploration target zone.
- **Low grades reflect position in the system, not system potential:** Gold in low-frequency quartz veins with arsenic is **consistent with drilling in the transitional halo**, as predicted by the model. This is expected and **does not reflect the grade potential of the overall system**. Historic high-grade production (~38 g/t Au) demonstrates the presence of significantly higher-grade mineralisation.
- **Evidence of high nugget gold supports upside potential:** Variability between Fire Assay (FA) and PhotonAssay (PA) results, including **8.55m @ 0.2 g/t Au (FA) vs 0.3 g/t Au (PA)** and a **maximum FA grade of 5 g/t Au increasing to 6.46 g/t Au (PA) in RRPT0001**, is **consistent with high nugget, unevenly distributed gold**.
- **Large, coherent mineralised system defined:** Gold-bearing quartz veining has been intersected across ~70 metres of strike within a **2.4km x 2.9km system footprint**, supporting the presence of a substantial RIRGS system.
- **Third hole testing major structural corridor, assays pending:** RRPT0002 intersects **major northeast-trending faults** within the northwestern target area of the MTPR02 geophysical anomaly. Core evaluation and assay testing are underway to assess the **impact of structure on mineralisation**.

**Right Resources Limited (ASX: RRE) (Right Resources or the Company)** provides an update on assay testwork at the Pilot Project, Tumbarumba, NSW.

Preliminary analysis by CODES (Centre for Ore Deposit and Earth Sciences, University of Tasmania), a globally recognised research group specialising in large-scale ore deposit systems, indicates Pilot is consistent with a Reduced Intrusive Related Gold System (**RIRGS**), supported by geological, geochemical and fluid inclusion evidence. Within a RIRGS, mineralisation is zoned outward from an intrusive heat source. CODES has established the following zonation framework for Pilot:

Table 1: CODES Zonation Framework for Pilot Project

Zone	Metal signature	Interpretation	Drilling status
<b>PROXIMAL</b>	Au-Bi-Te-W	Higher-temperature, higher-grade zone – proximal to intrusive centre	<b>NOT YET DRILLED</b>
<b>TRANSITIONAL</b>	Au-As ± Ag	Transitional halo - current drill position	RRPT0001 and RRPT0004
<b>DISTAL</b>	Ag-Pb-Zn	Outer margins of system	Not targeted

For personal use only

The low grades in RRPT0001 and RRPT0004 are consistent with drilling in the As-Au transitional zone, characterised by low-frequency sheeted quartz veining. This is consistent with the behaviour predicted by the preliminary CODES model. The Au+Bi+Te+W proximal core has not been tested. Historic production of ~38 g/t Au confirms the presence of higher-grade gold mineralisation within the system, however, the proximal source of these grades remains untested by modern drilling.

The MTPR02 geophysical resistivity anomaly (~500m diameter, southeast of the historic workings) is interpreted as part of an intrusive complex. RRPT0002 (1,400m) has been completed to test the northwestern quadrant of the MTPR02 anomaly. A series of north-east trending faults have been identified through surface magnetics and mapping, and tested by drillhole RRPT0002. Interpretation of displacement along these faults using marker horizons is in progress, which will provide further clarity on the target position of the proximal Au+Bi+Te+W core.

## Assay Methodology - What PA Can and Cannot Tell Us

Original RRPT0001 results (42m @ 0.2 g/t Au) used 50g Fire Assay (FA). Following reinterpretation as a RIRGS, methodology was reviewed. In RIRGS systems, gold can be coarsely and heterogeneously distributed and is poorly represented by a 50g FA charge.

PhotonAssay (PA) uses a 300-500g crushed sample, is non-destructive, and is suited to detecting nugget-style gold. Where PA returns higher grades than FA on the same material, this is consistent with heterogeneous distribution. Bidirectional variability (PA both above and below FA across different intervals) supports this interpretation and suggests it is not solely attributable to methodological bias.

PA has a lower detection limit of 0.02-0.15 g/t Au (ppm equivalent) (varies by laboratory), with accuracy decreasing near this threshold. The Company will undertake additional testwork using Screen Fire Assay (SFA, 500g-1,000g total pulp) to assess whether methodological differences influence reported grades, particularly at lower detection levels. Results will be reported once analysed.

## RRPT0001 - Select PA vs FA Comparison Results

**Hole summary:** 699.4m east beneath historic Pilot workings. Previously reported: 42m @ 0.2 g/t Au from 338m (FA, ASX: 5 February 2026). A full PA programme is in progress, with select intervals returned, having passed QAQC and considered suitable for release. Further testwork using SFA is underway to assess lower detection limits. **PA results at or near detection limits are considered preliminary.**

Table 2: RRPT0001 Fire Assay and PhotonAssay results comparison of representative intervals returned

From (m)	To (m)	Width (m)	FA (g/t Au)	PA (g/t Au)	Variance	Notes
346.45	355	8.55	0.20	<b>0.30</b>	+48%	Sub-interval within vein zone
351.5	351.7	0.20	5.00	<b>6.46</b>	+29%	Maximum FA grade - re-assayed by PA
363	364	1.00	0.29	<b>0.43</b>	+48%	Sub-interval within vein zone
368	369.9	1.90	0.11	0.02	-86%	Sub-interval within vein zone
377	378	1.00	0.14	<b>0.57</b>	+307%	Sub-interval of increased vein intensity

All intervals are reported as downhole lengths; true widths are not known. Minor discrepancies in variances may arise due to rounding and reporting precision.

**Key observations:** Intervals above the PA detection limit consistently upgrade under PA vs FA confirming nugget-style gold. Gold is associated with arsenic; tungsten, bismuth, telluride and molybdenum are subdued, which is consistent with the preliminary CODES transitional RIRGS position. Until PA and SFA is complete, 42m @ 0.2 g/t Au (FA) remains the reported intersection.

## RRPT0004 - Initial PA Results

**Hole summary:** 441.1m, ~70-100m along strike north of RRPT0001. All PA results returned have passed QAQC and are considered suitable for release. Further testwork using SFA is underway to assess lower detection limits. **PA results at or near detection limits are considered preliminary.**

Table 3: RRPT0004 Fire Assay and PhotonAssay results comparison of representative intervals returned

From (m)	To (m)	Width (m)	FA (g/t Au)	PA (g/t Au)	Variance	Notes
342.3	346	3.7	0.49	<b>0.46</b>	-7%	Higher-grade sub-interval. Above PA detection limit
342.75	343.25	0.5	2.18	<b>2.24</b>	+3%	Maximum FA grade - re-assayed by PA
353.7	356.7	3.0	0.06	<b>0.11</b>	+84%	FA and PA confirm variability
362.6	365	2.4	0.20	<b>0.20</b>	—	Sub-interval within vein zone

All intervals are reported as downhole lengths; true widths are not known. Minor discrepancies in variances may arise due to rounding and reporting precision.

**Key observations:** Strike continuity confirmed over 70m. PA vs FA variability up to 84% confirms the same nugget-style distribution as RRPT0001. An identical geological setting and CODES interpretation applies - both holes are interpreted to lie within the transitional RIRGS halo. Neither has tested the proximal Au-Bi-Te-W zone.

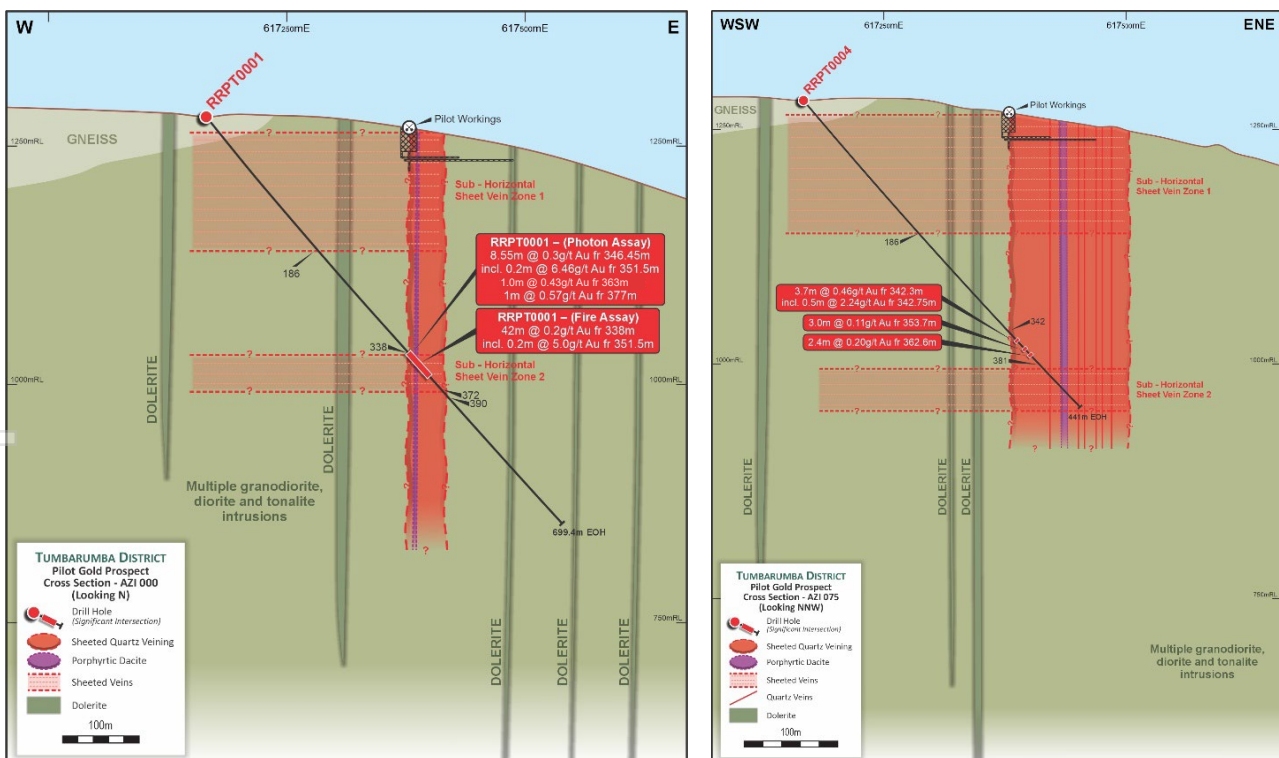


Figure 1: Pilot Project cross section illustrating the results from hole RRPT0001 and RRPT0004

## Combined Picture - System Scale and the Case for the Next Hole

RRPT0001 and RRPT0004 together define a coherent, large-scale mineralised system: gold in sheeted veins over 70m of strike, within a 2.4 x 2.9 km footprint, consistent As-Au geochemistry, and an identical low-sulphide, low frequency quartz sheeted vein and alteration assemblage.

Every observation in both holes aligns with the transitional RIRGS position. Consistency between observed results and the model supported its application for ongoing targeting.

- **RRPT0002 (results pending):** 1,400m testing potential offset of predicted major northeast-trending faults, within the MTPR02 anomaly – interpreted as part of an intrusive complex southeast of the historic workings – and further testing metal zonation. Results to be released progressively.
- **Phase 2 targeting:** Designed using geophysical modelling and to test potential repetition of sheeted vein zones and impact of northeast-trending faults on geochemical metal zonation, vectoring toward the proximal Au-Bi-Te-W zone.

## Next Steps

- **RRPT0002 assays:** Results released progressively
- **SFA - RRPT0001 and RRPT0004:** Validates PA results near detection limits; will determine final reported grades
- **CODES district update:** Broader RIRGS framework for Tumbarumba pending
- **Geometallurgy and dacite porphyry study:** Gold form and distribution through CODES and Met-Chem

## Assay Testwork Program - Technical Detail

*The methodology context relevant to interpreting results is outlined Appendix 1, Section 2. Technical detail for JORC compliance is summarised below:*

Original assays (50g FA): Bureau Veritas, Adelaide. PA testwork comprises 41 samples analysed at SGS Orange and SGS Perth (all NATA-accredited). For each interval, all available sample mass was used; between one and six sub-assays were completed per interval. OREAS certified reference material was used for QC at each laboratory. Sample transport and turnaround times were impacted by national diesel fuel supply disruptions (March to May 2026) and elevated laboratory demand.

**ENDS**

This announcement has been approved for release by the Board of Right Resources Limited.

## Further Information

---

### Graham Howard

#### Managing Director

E: [info@rightresources.com.au](mailto:info@rightresources.com.au)

### Jessamyn Lyons

#### Company Secretary

E: [jessamyn.lyons@rightresources.com.au](mailto:jessamyn.lyons@rightresources.com.au)

---

### Media

#### David Tasker

Chapter One Advisors

E: [dtasker@chapteroneadvisors.com.au](mailto:dtasker@chapteroneadvisors.com.au)

### Follow Us



## About Right Resources (ASX: RRE)

Right Resources Limited is a New South Wales-based mineral exploration company focused on advancing a portfolio of gold, copper and critical mineral assets across 2,177 km<sup>2</sup> (GIS-derived) of tenements in the Tumbarumba and New England regions, both located within historically significant goldfields and mineral provinces.

The Company's flagship asset is the Pilot Project, a high-grade gold target in the Tumbarumba Region with a history of high-grade underground gold production (~38 g/t Au), which is being advanced through a maiden diamond drilling programme in collaboration with CODES (Centre for Ore Deposit and Earth Sciences, University of Tasmania). The Blue Prospect tungsten discovery adds a significant critical minerals dimension to the Company's portfolio.

## Forward Statements

This announcement may contain forward-looking statements or information, including forecasts, projections, opinions and conclusions. These statements are not guarantees of future performance or statements of fact. Actual events and results may differ materially due to a variety of risks, uncertainties and other factors, including, among other things, funding requirements, metal prices, exploration and development risks, operational challenges, competition, production risks, regulatory restrictions, including environmental regulation and liability, potential title disputes and various business, economic, political and social uncertainties and contingencies. Although Right Resources believes there is a reasonable basis for any forward-looking statements, such statements involve significant risks and uncertainties.

## Competent Person Statement

### Graham Howard

The information in this announcement that relates to Exploration Results is based on and fairly represents information and supporting documentation compiled by Graham Howard, who is Managing Director of Right Resources Limited. Mr Howard is a Competent Person who is a Fellow of the Australian Institute of Mining and Metallurgy (AusIMM).

Mr Howard has sufficient experience that is relevant to the style of mineralisation and type of deposit under consideration, and to the activity being undertaken, to qualify as a Competent Person as defined in the 2012 Edition of the “Australasian Code for Reporting of Exploration Results, Mineral Resources and Ore Reserves” (JORC, 2012). Mr Howard consents to the inclusion in this announcement of the matters based on his information in the form and context in which it appears.

### Previously Reported Exploration Results

The information in this announcement that relates to the Company’s Exploration Results has been extracted from the Company’s previous ASX announcements dated 26 May 2026, 5 February 2026 and 27 October 2025. The Company confirms that it is unaware of any new information or data that materially affects the information included in those announcements. To the extent disclosed above, the Company confirms that the form and context in which the Competent Person’s findings are presented have not been materially modified from the original market announcements. All previously released market announcements referred to within this announcement can be found on the Company’s website at [rightresources.com.au](http://rightresources.com.au).

## Appendix 1 - JORC Table 1, Sections 1 - 2

### Section 1 Sampling Techniques and Data

Criteria	JORC Code explanation	Commentary
<b>Sampling techniques</b>	<ul style="list-style-type: none"> <li>Nature and quality of sampling (eg cut channels, random chips, or specific specialised industry standard measurement tools appropriate to the minerals under investigation, such as down hole gamma sondes, or handheld XRF instruments, etc). These examples should not be taken as limiting the broad meaning of sampling.</li> <li>Include reference to measures taken to ensure sample representivity and the appropriate calibration of any measurement tools or systems used.</li> <li>Aspects of the determination of mineralisation that are Material to the Public Report.</li> <li>In cases where 'industry standard' work has been done this would be relatively simple (eg 'reverse circulation drilling was used to obtain 1 m samples from which 3 kg was pulverised to produce a 30 g charge for fire assay'). In other cases more explanation may be required, such as where there is coarse gold that has inherent sampling problems. Unusual commodities or mineralisation types (eg submarine nodules) may warrant disclosure of detailed information.</li> </ul>	<ul style="list-style-type: none"> <li>Three primary Diamond Drill holes (DD) (hole ID: RRPT0001, RRPT0002, and RRPT0004), pre-collar RRPT0003 and daughter hole RRPT0002A have been completed or on hold by Right Resources Limited ("Right Resources", "RR", or "the Company") at the Pilot Project Area in EL9449.</li> <li>Diamond drilling was undertaken to obtain high-quality core samples suitable for geological and geotechnical logging sampling and metallurgical testwork.</li> <li>Core was logged by a qualified geologist, with intervals marked and cut for half-core sampling to maintain representativity.</li> <li>Sample intervals typically ranged from 0.2 m to 1.0 m, adjusted based on lithology, alteration, mineralisation and veining. Certain intervals sampled a minimum of 0.15 m.</li> <li>Core was orientated, meter marked, portable XRF (pXRF), magnetic susceptibility and core loss recorded.</li> <li>Magnetic susceptibility readings were taken over representative sections of each hole using calibrated instruments, verified against certified standards.</li> <li>pXRF readings were taken at 10cm intervals were completed across representative intervals for geochemistry analysis.</li> <li>Downhole Geophysics: Geoscensor Wireline completed acoustic televiewer, IP &amp; Resistivity, magnetic susceptibility logging on RRPT0001, RRPT0002 and RRPT0004</li> <li>These techniques are considered appropriate for testing mineralisation controls.</li> </ul>
<b>Drilling techniques</b>	<ul style="list-style-type: none"> <li>Drill type (eg core, reverse circulation, open-hole hammer, rotary air blast, auger, Bangka, sonic, etc) and details (eg core diameter, triple or standard tube, depth of diamond tails, face-sampling bit or other type, whether core is oriented and if so, by what method, etc).</li> </ul>	<ul style="list-style-type: none"> <li>RRPT0001 - Diamond drilling was undertaken with HQ (96mm outer diameter) to 50.4mdh and then NQ2 with a 75.7mm drill bit (outer diameter) to 699.7m.</li> <li>RRPT0002 - Diamond drilling was undertaken with HQ (96mm outer diameter) to 479.3mdh and then NQ2 with a 75.7mm drill bit (outer diameter) to 1400m</li> <li>RRPT0003 – Diamond drilling was undertaken with HQ (96mm outer diameter) to 300.2m</li> <li>RRPT0004 – Diamond drilling was undertaken with HQ (96mm outer diameter) to 441.1m</li> <li>RRPT0002A – Daughter hole of RRPT0002 was drilled using in hole wedge from 478m. Diamond drilling was</li> </ul>

Criteria	JORC Code explanation	Commentary
		<p>undertaken with HQ (398mm outer diameter) to 677.5m). The Company plans to complete this hole pending outcomes from assays.</p> <ul style="list-style-type: none"> <li>• Chrome barrel was used to limit hole deviation</li> <li>• Waste mud from the drilling program was collected as part of environmental monitoring.</li> <li>• All core from each shift was quick logged by a geologist.</li> <li>• All core has been orientated, with drillers marking core with down hole orientation tool, recording rod counts and core loss routinely for each hole.</li> <li>• A geologist has either checked driller orientation marks or undertaken full length orientation mark up to validate orientation markings, suitable for structural modelling.</li> </ul>
<b>Drill sample recovery</b>	<ul style="list-style-type: none"> <li>• Method of recording and assessing core and chip sample recoveries and results assessed.</li> <li>• Measures taken to maximise sample recovery and ensure representative nature of the samples.</li> <li>• Whether a relationship exists between sample recovery and grade and whether sample bias may have occurred due to preferential loss/gain of fine/coarse material.</li> </ul>	<ul style="list-style-type: none"> <li>• Core loss was recorded after each run and core block inserted by driller.</li> <li>• Meter marking was undertaken from the start of the hole which provides validation against the core block interval depths.</li> <li>• A final rod count after the hole is drilled provides a validation check on total meters drilled.</li> <li>• Laboratory measured weight of each sample.</li> <li>• Sample recoveries were generally high and consistent across the drilling program, with no observable relationship between sample recovery and grade.</li> </ul>
<b>Logging</b>	<ul style="list-style-type: none"> <li>• Whether core and chip samples have been geologically and geotechnically logged to a level of detail to support appropriate Mineral Resource estimation, mining studies and metallurgical studies.</li> <li>• Whether logging is qualitative or quantitative in nature. Core (or costean, channel, etc) photography.</li> <li>• The total length and percentage of the relevant intersections logged.</li> </ul>	<ul style="list-style-type: none"> <li>• Geological logs have been completed using a multi pass system capturing lithology, alteration, mineralogy, veining, structure and geotechnical RQD.</li> <li>• Logging is completed at a level suitable to support future resource estimation.</li> <li>• Logging includes both qualitative and quantitative elements. Qualitative descriptions cover lithology, alteration style, mineralisation characteristics, and structural observations. Quantitative measurements include RQD, fracture frequency, veining percentages, mineral abundance estimations, and other geotechnical or analytical attributes.</li> <li>• Core is photographed both as wet and dry.</li> <li>• All holes have been logged with cut sheets developed for sampling.</li> <li>• Downhole geophysical logs of selected intervals were completed for hole RRPT0001, RRPT0002 and RRPT0004.</li> </ul>
<b>Sub-sampling techniques and sample preparation</b>	<ul style="list-style-type: none"> <li>• If core, whether cut or sawn and whether quarter, half or all core taken.</li> <li>• If non-core, whether riffled, tube sampled, rotary split, etc and whether sampled wet or dry.</li> </ul>	<ul style="list-style-type: none"> <li>• Intervals selected for sampling by a geologist and half core cut using a diamond saw.</li> <li>• To minimise bias in sample selection, the orientation line on the core is positioned slightly off-centre in the core trays. This ensures that the core is consistently cut in</li> </ul>

For personal use only

For personal use only

Criteria	JORC Code explanation	Commentary
	<ul style="list-style-type: none"> <li>For all sample types, the nature, quality and appropriateness of the sample preparation technique.</li> <li>Quality control procedures adopted for all sub-sampling stages to maximise representivity of samples.</li> <li>Measures taken to ensure that the sampling is representative of the in situ material collected, including for instance results for field duplicate/second-half sampling.</li> <li>Whether sample sizes are appropriate to the grain size of the material being sampled.</li> </ul>	<p>the same position while preserving the orientation mark. The half opposite the orientation line is selected for sampling. A cut line is placed to differentiate the orientation line as an indication for cutting.</p> <ul style="list-style-type: none"> <li>All samples are derived from diamond core.</li> <li>Sample preparation for Fire Assay includes drying, crushing to &lt;2 mm, and pulverising to a nominal 85–90% passing 75 µm completed at Bureau Veritas Adelaide.</li> <li>Sample preparation for PhotonAssay includes drying, coarse crush of drill core to 2mm to 3mm and split crushed material to nominal 500g samples, completed at ALS Orange sample preparation facility.</li> <li>Samples were also issued to SGS Orange for sample preparation for PhotonAssay. Preparation for PhotonAssay includes drying and coarse crush to 2mm to 3mm and spilt to nominal 300g samples for analysis.</li> <li>The Company is conducting further testwork on current diamond core and may result in changes to sampling procedure. This work includes preparation testwork for both screen fire assay and fire assay to extinction.</li> <li>Quality control procedures during sub-sampling include careful handling of core, use of a fixed-position core saw, and routine cleaning between cuts to minimise contamination.</li> <li>Sample sizes (half-core) are subject to ongoing testwork and may change based on gold mineralisation styles Testwork is in progress to determine if volume variance (mass and volume of sample) influences assay grade.</li> </ul>
<p><b>Quality of assay data and laboratory tests</b></p>	<ul style="list-style-type: none"> <li>The nature, quality and appropriateness of the assaying and laboratory procedures used and whether the technique is considered partial or total.</li> <li>For geophysical tools, spectrometers, handheld XRF instruments, etc, the parameters used in determining the analysis including instrument make and model, reading times, calibrations factors applied and their derivation, etc.</li> <li>Nature of quality control procedures adopted (eg standards, blanks, duplicates, external laboratory checks) and whether acceptable levels of accuracy (ie lack of bias) and precision have been established.</li> </ul>	<ul style="list-style-type: none"> <li>The Company is completing a testwork program using Fire Assay, PhotonAssay and Screen Fire Assay on selected intervals from holes RRPT0001, RRPT0002 and RRPT0004 which are in progress. Interim results for holes RRPT0001 and hole RRPT0004 subject of this Table 1.</li> <li>The company has adopted updated methodology for assaying testwork, PhotonAssay analysis which does not add flux, require fusion, acids or dissolution, and sample remains intact. The Company then commences either a Fire assay or Screen Fire Assay methodology. This may require samples to be transported to other assay laboratories which host relevant services.</li> <li>PhotonAssay (X-ray fluorescence method) analyses a sample mass of approximately 300g to 500g (laboratory dependent).</li> <li>Fire assay requires core samples to be dried, crushed and pulverised. Smaller mass of sample of 50g is split from pulverised sample material for Fire assay</li> </ul>

For personal use only

Criteria	JORC Code explanation	Commentary
		<p>which involving adding flux, fusion, cupellation and reporting.</p> <ul style="list-style-type: none"> <li>• Holes RRPT003 and daughter hole remain uncut pending outcomes from initial phase of testwork. These holes may also be used for future geochemistry and metallurgical analysis.</li> <li>• Internal laboratory QAQC protocols include routine insertion of blanks, duplicates, and certified reference material (CRMs).</li> <li>• Company QAQC procedures for Photon and fire assay and multi-element ICP analysis:               <ul style="list-style-type: none"> <li>○ CRMs inserted at a frequency of 1 in 20 samples (5%), covering both gold (Au) and multi-element suites.</li> <li>○ Blanks inserted at a frequency of 1 in 20 samples (5%) to monitor contamination.</li> <li>○ Company completing duplicate sampling of half core as part of testwork.</li> <li>○ Laboratory pulp duplicates are routinely analysed, as part of the internal laboratory QAQC routine.</li> <li>○ Only results which have passed QAQC are released.</li> </ul> </li> <li>• Instrument calibration:               <ul style="list-style-type: none"> <li>○ Magnetic susceptibility readings were taken using a calibrated instrument with periodic checks against known standards.</li> <li>○ pXRF instrument is calibrated at commencement of each sampling run and periodic checks against known CRM.</li> </ul> </li> </ul>
<p><b>Verification of sampling and assaying</b></p>	<ul style="list-style-type: none"> <li>• The verification of significant intersections by either independent or alternative company personnel.</li> <li>• The use of twinned holes.</li> <li>• Documentation of primary data, data entry procedures, data verification, data storage (physical and electronic) protocols.</li> <li>• Discuss any adjustment to assay data.</li> </ul>	<ul style="list-style-type: none"> <li>• CODES have independently reviewed drill holes and taken samples to complete testwork.</li> <li>• Daughter hole RRPT0002A commenced 15 March 2026 will provide initial twin hole data to parent hole RRPT0002. Potential work includes future metallurgical testwork with hole RRPT0002A.</li> <li>• Drill logs have been recorded in electronic format.</li> <li>• All data is uploaded, validated and stored in the Company's Micromine Geobank Database.</li> <li>• Drill hole data analysed in Leapfrog and Micromine.</li> </ul>
<p><b>Location of data points</b></p>	<ul style="list-style-type: none"> <li>• Accuracy and quality of surveys used to locate drill holes (collar and down-hole surveys), trenches, mine workings and other locations used in Mineral Resource estimation.</li> <li>• Specification of the grid system used.</li> <li>• Quality and adequacy of topographic control.</li> </ul>	<ul style="list-style-type: none"> <li>• Location of drill holes were set out by an independent surveyor from Rivland Surveyors using survey-grade equipment.</li> <li>• Final collar surveys for holes RRPT0001, RRPT0002, and RRPT0003 were completed on 29th January and 27 February 2026 by Rivland Surveyors</li> </ul>

Criteria	JORC Code explanation	Commentary
		<ul style="list-style-type: none"> <li>Final collar survey for RRPT0004 was completed by Rivland Surveyors 22 April 2026.</li> <li>Down hole surveys were completed during drilling using a Gyro Single Shot tool at 30m increments.</li> <li>Final down hole survey for RRPT0001, RRPT0002, RRPT0003, RRPT0004 were completed using the Gyro Single Shot system.</li> <li>All spatial data are recorded in MGA 94 Zone 55 with elevations referenced to AHD.</li> <li>Topographic control is considered adequate for Mineral Resource estimation purposes, with collar positions tied into established survey control by a licensed surveyor.</li> </ul>
<b>Data spacing and distribution</b>	<ul style="list-style-type: none"> <li>Data spacing for reporting of Exploration Results.</li> <li>Whether the data spacing and distribution is sufficient to establish the degree of geological and grade continuity appropriate for the Mineral Resource and Ore Reserve estimation procedure(s) and classifications applied.</li> <li>Whether sample compositing has been applied.</li> </ul>	<ul style="list-style-type: none"> <li>Position of holes provides in Table 4 and Figure 2.</li> <li>RRPT0002 was drilled to 1400m at an azimuth orientated approximately 40 degrees to the south of RRPT0001, providing an approximate drill-hole separation of 680m at the target depth of 1400m.</li> <li>RRPT0004 was drilled to 441.1m at a northerly orientation (approximately 12 degrees), from RRPT0001, designed to tests beneath the deepest historical workings along strike of hole RRPT0001.</li> <li>RRPT0003 was drilled to 330.2m, approximately 18 degrees south of RRPT0002 and at a steeper dip (10 degrees steeper).</li> <li>RRPT0002A was drilled as a daughter hole from RRPT0002, commencing at a downhole depth of 478 m.</li> <li>The current spacing is insufficient to establish a degree of geological and grade continuity appropriate for a Mineral Resource estimation.</li> <li>No sample compositing has been completed.</li> </ul>
<b>Orientation of data in relation to geological structure</b>	<ul style="list-style-type: none"> <li>Whether the orientation of sampling achieves unbiased sampling of possible structures and the extent to which this is known, considering the deposit type.</li> <li>If the relationship between the drilling orientation and the orientation of key mineralised structures is considered to have introduced a sampling bias, this should be assessed and reported if material.</li> </ul>	<ul style="list-style-type: none"> <li>The current drilling orientations are considered appropriate for testing the interpreted sheet-style mineralisation.</li> <li>RRPT0001 and RRPT0004 were drilled approximately west-east, and RRPT0002 was drilled to the southeast, which together provide intersections that are broadly perpendicular to the historically recorded north-south mineralisation trend.</li> <li>RRPT0002 is drilled at a lower angle (~45°) to this trend, allowing it to test potential down-dip and along-strike extensions base on historic mining records.</li> <li>RRPT0003, drilled to 300m as a pre-collar, is oriented to the south-southeast to test a</li> </ul>

For personal use only

For personal use only

Criteria	JORC Code explanation	Commentary
		<p>potential vein trend based on preliminary geological interpretation.</p> <ul style="list-style-type: none"> <li>RRPT0002A is drilled as a daughter hole from RRPT0002 and is positioned to the north of the parent hole drill trace. Minimal drill separation has occurred within the current drilled meters of 198.5m from 479m down hole from the parent hole RRPT0002.</li> <li>At this stage of the program, there is limited detailed knowledge of the key mineralised structures, and therefore it is not yet possible to fully assess whether any drilling orientation may introduce sampling bias.</li> </ul>
<p><b>Sample security</b></p>	<ul style="list-style-type: none"> <li>The measures taken to ensure sample security.</li> </ul>	<ul style="list-style-type: none"> <li>After cutting and bagging, each sample was placed in labelled plastic bag with a unique sample ID.</li> <li>Samples were grouped into polywoven bags, sealed with cable ties, and documented on a sample dispatch sheet.</li> <li>The dispatch sheet includes: <ul style="list-style-type: none"> <li>Hole ID, interval, sample ID, and number of bags.</li> <li>Signature of the geologist preparing the samples.</li> <li>Samples were stored in a secure, locked facility on site until transport.</li> </ul> </li> <li>Transport procedure: <ul style="list-style-type: none"> <li>A Right Resources representative delivered sealed sample bags to the nominated third-party courier depot.</li> <li>Courier provided a consignment note, which was cross-checked against the dispatch sheet.</li> </ul> </li> <li>Laboratory confirmation: <ul style="list-style-type: none"> <li>Bureau Veritas confirmed receipt of samples via electronic chain-of-custody acknowledgment, listing all sample IDs.</li> <li>ALS confirmed receipt of samples via electronic chain-of-custody acknowledgment, listing all sample IDs.</li> <li>SGS confirmed receipt of samples via electronic chain of custody acknowledgement listing all sample IDs.</li> <li>All chain-of-custody records (dispatch sheets and lab receipts) are retained in the company's QAQC files.</li> </ul> </li> </ul>
<p><b>Audits or reviews</b></p>	<ul style="list-style-type: none"> <li>The results of any audits or reviews of sampling techniques and data.</li> </ul>	<ul style="list-style-type: none"> <li>CODES has independently reviewed drill core, sampled drill core and completing testwork on core and regional sampling.</li> <li>CODES provides periodic report updates of findings.</li> <li>Metchem engaged for metallurgical services as part of testing gold distribution in Pilot.</li> </ul>

## Section 2 Reporting of Exploration Results

Criteria	JORC Code explanation	Commentary
<b>Mineral tenement and land tenure status</b>	<ul style="list-style-type: none"> <li>Type, reference name/number, location and ownership including agreements or material issues with third parties such as joint ventures, partnerships, overriding royalties, native title interests, historical sites, wilderness or national park and environmental settings.</li> <li>The security of the tenure held at the time of reporting along with any known impediments to obtaining a licence to operate in the area.</li> </ul>	<ul style="list-style-type: none"> <li>The tenement, EL9449, covering the Pilot Project Area is 100% owned by Right Resources Pty Ltd in New South Wales, Australia.</li> <li>The Pilot Project Area lies wholly in the Maragle State Forest operated by NSW forestry.</li> <li>Historical hard rock mining has occurred within the Pilot Project Area at the Historic Pilot Reef Mine which has recorded production of 2662t @38g/t Au (5<sup>th</sup> October 2025).</li> <li>Historical alluvial mining has been extensively mined in the creeks neighbouring Historic Pilot Reef Mine within the Pilot Project Area.</li> <li>The tenement is in good standing, and the Company is not aware of any impediments to ongoing exploration or future development.</li> </ul>
<b>Exploration done by other parties</b>	<ul style="list-style-type: none"> <li>Acknowledgment and appraisal of exploration by other parties.</li> </ul>	<ul style="list-style-type: none"> <li>Historic mining work occurred between 1855 and 1954 across the Tumbarumba Gold Fields.</li> <li>The historic Pilot Reef Mine was worked in the 1860's to 1880's.</li> <li>The Company has obtained hardcopy reports and maps in relation to this information as part of its historical review in preparation for their current work program.</li> <li>The historic data comprises mine production records from the NSW Mine Registrar</li> <li>Several companies have undertaken periodic and localised exploration across parts of EL9449 between 1969 and 2022, primarily targeting tin and gold mineralisation. Historical work included geological mapping, stream sediment sampling, limited geochemical surveys, and trenching. Key exploration activities include:</li> <li>A.O.G. Minerals Pty Ltd held historic tenure EL200, which partially overlaps EL9449; however, a review of historical reports indicates no exploration was conducted within the EL9449 boundary.</li> <li>Southern Cross Exploration N.L. (JV with Hallmark Minerals N.L.) conducted exploration on the historic licence EL669, which overlaps EL9449. Two exploration stages were completed. The first exploration program consisted of geological mapping, an incomplete geochemical survey and panning for tin and gold on a limited scale. No analysis of pathfinder elements was carried out, but it was reported on the limited analysis for silver, that silver content is proportional to gold. The second</li> </ul>

For personal use only

Criteria	JORC Code explanation	Commentary
		<p>exploration program consisted of costeans dug to test the alluvial flats along Back Creek between the tributaries of Pennyweight and Mc Geochs, totalling 21 costeans over a length of 2.6km (N-S). Gold values were negligible while grades of tin were very low to be economically exploited.</p> <ul style="list-style-type: none"> <li>Cluff Minerals (Australia) Pty Ltd explored on the historic licence EL1618, which lies within EL9449, undertaking reconnaissance mapping, gamma spectrometry, and stream sediment sampling in the headwaters of Back, Pound, McGeochs, Free Damper, Pinchgut, Maragle, Reedy and Pennyweight Creeks, and alluvial flats near the junction of the Tooma River and Pound Creek. Tin was found to be widely distributed, but concentrations were deemed subeconomic. They determined tin seems widely distributed within granitoids and probable in stringer mineralisation in roof pendants and contacts.</li> <li>Southern Cross Exploration N.L. (JV with Gulf Resources N.L.) held tenures overlapping EL9449 (historic licence EL1750), but no exploration appears to have been conducted within the EL9449 boundary.</li> <li>Bullseye Gold Pty Ltd held the historic licence EL9056, partly covering EL9449, but conducted no fieldwork before relinquishing the licence in 2022.</li> </ul>
<b>Geology</b>	<ul style="list-style-type: none"> <li>Deposit type, geological setting and style of mineralisation.</li> </ul>	<ul style="list-style-type: none"> <li>Test the nature of the potential style of mineralisation is quartz sheeted vein within major intrusive complex.</li> <li>The historic Pilot underground mineralised corridor strikes 006 degrees and dips -82 degrees towards the west.</li> <li>In addition, internal north-east (40 degrees) trending high-grade mineralisation may occur within the mineralisation corridor following surface field observations of historic stope orientations along the N-S mineralised corridor</li> <li>The broader mineralisation system is interpreted to be hosted within a large multi-phased intrusive complex with multiphase mineralisation system.</li> </ul>
<b>Drill hole Information</b>	<ul style="list-style-type: none"> <li>A summary of all information material to the understanding of the exploration results including a tabulation of the following information for all Material drill holes:</li> <li>easting and northing of the drill hole collar</li> <li>elevation or RL (Reduced Level – elevation above sea level in metres) of the drill hole collar</li> <li>dip and azimuth of the hole</li> <li>down hole length and interception depth</li> <li>hole length.</li> </ul>	<ul style="list-style-type: none"> <li>Drillhole locations were initially marked out by an independent surveyor (Rivland Surveyors), with final collar positions to be surveyed by the same contractor upon completion of drilling.</li> <li>All material drill-hole information, including collar easting, northing, RL (AHD), drillhole azimuth, dip, hole length, and downhole interval information, is presented in Appendix 2, Table 4. This information is considered complete and appropriate for the reporting of Exploration Results.</li> </ul>

For personal use only

Criteria	JORC Code explanation	Commentary
	<ul style="list-style-type: none"> <li>If the exclusion of this information is justified on the basis that the information is not Material and this exclusion does not detract from the understanding of the report, the Competent Person should clearly explain why this is the case.</li> </ul>	<ul style="list-style-type: none"> <li>No drill-hole information has been excluded and is based on the stage of testwork to date.</li> <li>New results may alter interim assay outcomes.</li> <li>The Competent Person considers that the inclusion of all data supports a full understanding of the Exploration Results at this point in time.</li> </ul>
<b>Data aggregation methods</b>	<ul style="list-style-type: none"> <li>In reporting Exploration Results, weighting averaging techniques, maximum and/or minimum grade truncations (eg cutting of high grades) and cut-off grades are usually Material and should be stated.</li> <li>Where aggregate intercepts incorporate short lengths of high grade results and longer lengths of low grade results, the procedure used for such aggregation should be stated and some typical examples of such aggregations should be shown in detail.</li> <li>The assumptions used for any reporting of metal equivalent values should be clearly stated.</li> </ul>	<ul style="list-style-type: none"> <li>Fire Assay results for RRPT0001 have previously been released in the ASX Announcement titled “Extensive Gold-Copper Mineralisation at Pilot – Amendment” dated 5 February 2026.</li> <li>Assay testwork in progress including re-assay of RRPT0001 using PhotonAssay. Hole RRPT0004, PhotonAssay results for sheeted vein zone west of historic workings reported. Further work is in progress to assay potentially mineralised intervals of this hole, RRPT0002 assaying testwork is in progress and results pending.</li> <li>No high-grade top-cuts were applied.</li> <li>All intercepts are reported as downhole widths, as true widths are not yet known.</li> <li>Significant intercepts were generated using a nominal cut-off based on Au (g/t) with internal dilution permitted as follows:               <ul style="list-style-type: none"> <li>Up to 5m of below 0.1ppm sample if geological logging identifies interval within same geological alteration + mineralisation zone.</li> </ul> </li> <li>No metal equivalents were reported in RRPT0001</li> </ul>
<b>Relationship between mineralisation widths and intercept lengths</b>	<ul style="list-style-type: none"> <li>These relationships are particularly important in the reporting of Exploration Results.</li> <li>If the geometry of the mineralisation with respect to the drill hole angle is known, its nature should be reported.</li> <li>If it is not known and only the down hole lengths are reported, there should be a clear statement to this effect (eg 'down hole length, true width not known').</li> </ul>	<ul style="list-style-type: none"> <li>RRPT0001 and RRPT0004 were drilled approximately perpendicular to the interpreted north-south strike of the mineralisation (~006°). Based on current understanding, mineralisation is interpreted to dip steeply to the west at approximately 80–90°.</li> <li>Given the steep dip and the current drill orientations, downhole intercepts may not represent true thicknesses. True widths cannot be reliably estimated at this stage due to limited structural information and the early stage of drilling.</li> <li>Accordingly, all reported intercepts are downhole lengths; true widths are not known.</li> </ul>
<b>Diagrams</b>	<ul style="list-style-type: none"> <li>Appropriate maps and sections (with scales) and tabulations of intercepts should be included for any significant discovery being reported. These should include, but not be limited to a plan view of drill hole collar locations and appropriate sectional views.</li> </ul>	<ul style="list-style-type: none"> <li>Plan view of drill-hole collar locations, interpreted geology, and geophysical targets are included in the announcement as Figure 2.</li> <li>Sections of RRPT0001 and RRPT0004 and provided at Figure 1.</li> <li>These diagrams are presented at appropriate scales to aid interpretation and understanding of the Exploration Results</li> </ul>

For personal use only

Criteria	JORC Code explanation	Commentary
<b>Balanced reporting</b>	<ul style="list-style-type: none"> <li>Where comprehensive reporting of all Exploration Results is not practicable, representative reporting of both low and high grades and/or widths should be practiced to avoid misleading reporting of Exploration Results.</li> </ul>	<ul style="list-style-type: none"> <li>The geological and mineralisation interpretations reflect the current level of knowledge and are expected to evolve as additional drilling and geological information becomes available.</li> <li>No high-grade cuts have been applied to the reported results</li> <li>All intersections have been reported as down hole lengths, true widths are not yet known due to the early stage of geological interpretation</li> </ul>
<b>Other substantive exploration data</b>	<ul style="list-style-type: none"> <li>Other exploration data, if meaningful and material, should be reported including (but not limited to): geological observations; geophysical survey results; geochemical survey results; bulk samples – size and method of treatment; metallurgical test results; bulk density, groundwater, geotechnical and rock characteristics; potential deleterious or contaminating substances.</li> </ul>	<ul style="list-style-type: none"> <li>Downhole geophysical surveying was completed in drillhole RRPT0001 (472 m to 948 m), RRPT0002 (472 m to 948 m) and RRPT0004 (472 m to 948 m). The survey suite included standard downhole geophysics designed to assist in characterising lithological variations, identifying potential sulphide bearing zones, and validating structural interpretations.</li> <li>The downhole geophysical dataset is considered to provide valuable supplementary information that supports geological logging and assists in constraining the position and orientation of mineralised structures. Interpretation of the geophysical results remains preliminary and will be refined as further drilling and geological information becomes available.</li> <li>Assay testwork is in progress to understand the nature of gold in the Pilot mineralised system. Initial metallurgical review is in progress as part of assay testwork.</li> <li>No deleterious or contaminant elements have been identified from the data available to date.</li> </ul>
<b>Further work</b>	<ul style="list-style-type: none"> <li>The nature and scale of planned further work (eg tests for lateral extensions or depth extensions or large-scale step-out drilling).</li> <li>Diagrams clearly highlighting the areas of possible extensions, including the main geological interpretations and future drilling areas, provided this information is not commercially sensitive.</li> </ul>	<ul style="list-style-type: none"> <li>Additional drilling is planned to further test the mineralisation along strike and down dip.</li> <li>Company is currently completing further assay and sample size testwork to ensure methodology is adopted for the style of mineralisation.</li> </ul>

For personal use only

## Appendix 2 - Diamond Drillhole Collar Locations

Table 4: Diamond Drillhole Collar Locations

Hole ID	Easting (m)	Northing (m)	RL (m)	Zone	Grid	From (m)	To (m)	Azimuth (°)	Dip (°)
RRPT0001	617164.05	6033874.96	1281.2	MGA94	55	0	699.4	87.74	-50.93
RRPT0002	617164.14	6033872.06	1281.2	MGA94	55	0	1400	131.36	-51.02
RRPT0002A	617164.14	6033872.06	1281.2	MGA94	55	479.3	678.1	131.36	-51.02
RRPT0003	617162.47	6033872.89	1281.2	MGA94	55	0	300.2	145.15	-60.95
RRPT0004	617166.49	6033876.65	1281.2	MGA94	55	0	441.1	73	-49.8

Table 5: Significant Intercepts in RRPT0001 and RRPT0004

Hole ID	From	To	Interval Length (m)	Fire Assay Au (g/t)	PhotonAssay Primary Au (g/t)	Variance
RRPT0001	339	340	1.00	0.25	0.40	+60%
RRPT0001	346.45	355	8.55	0.20	0.30	+48%
<i>Includes</i>	<i>351.5</i>	<i>351.7</i>	<i>0.20</i>	<i>5.00</i>	<i>6.46</i>	<i>+29%</i>
RRPT0001	363	364	1.00	0.29	0.43	+48%
RRPT0001	368	369.9	1.90	0.11	0.02	-86%
RRPT0001	373	374	1.00	0.23	0.28	+22%
RRPT0001	377	378	1.00	0.14	0.57	+307%
RRPT0001	378	379	1.00	0.05	0.16	+220%
RRPT0004	342.3	346	3.70	0.49	0.46	-7%
<i>Includes</i>	<i>342.75</i>	<i>343.25</i>	<i>0.50</i>	<i>2.18</i>	<i>2.24</i>	<i>+3%</i>
RRPT0004	353.7	356.7	3.00	0.06	0.11	+84%
RRPT0004	362.6	365	2.40	0.20	0.20	—

**Notes:**

cut-off grade of 0.1g/t Au, 0.1g/t Ag and 60ppm Cu  
no high grade cuts applied  
down hole widths reported  
internal dilution included up to 5m based on Au (g/t),  
Minor discrepancies in variances may arise due to rounding and reporting precision.

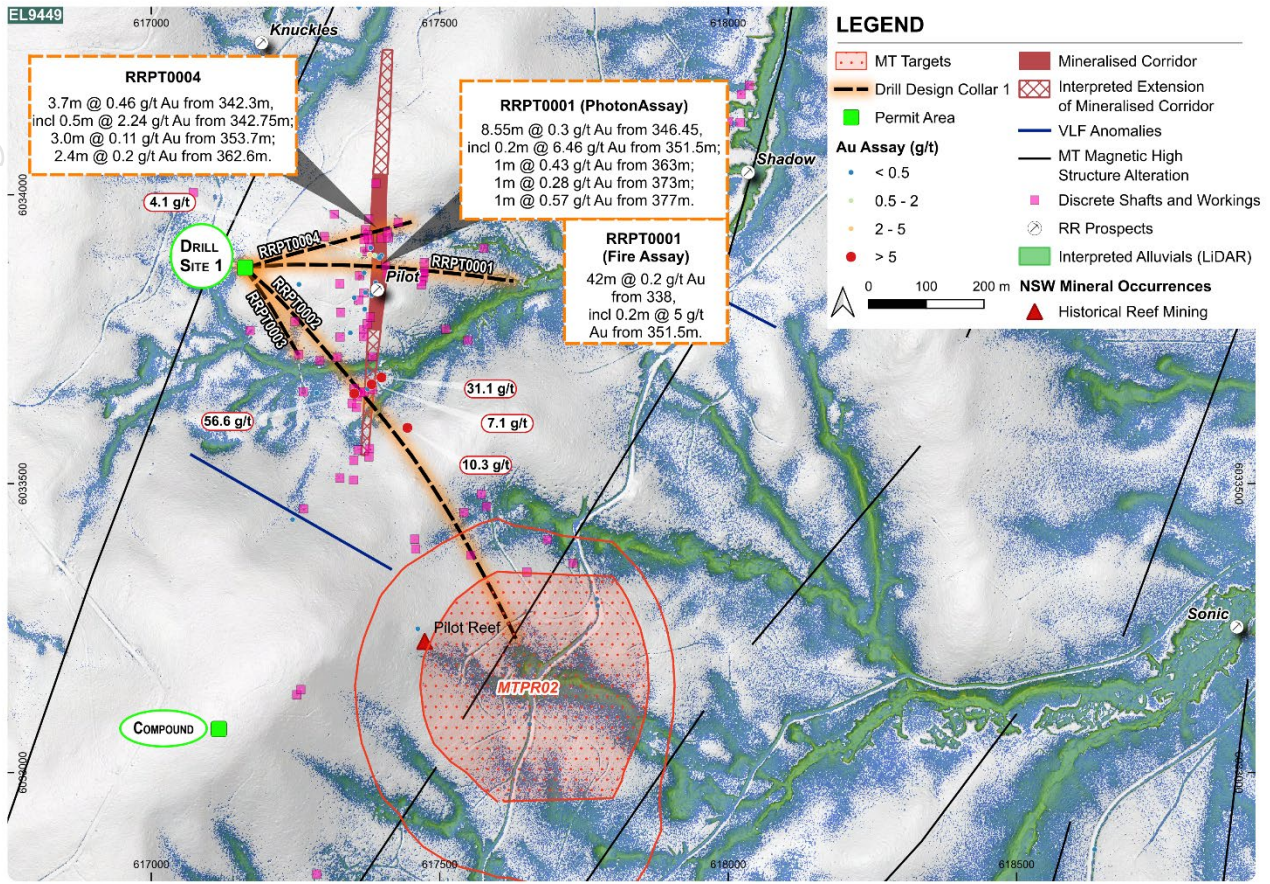


Figure 2: Pilot Project drillhole locations and results from RRPT0001 and RRPT0004

For personal use only