

DD003B CONFIRMS HIGH-GRADE NIOBIUM AT THE CARBONATITE MARGIN, KAMEELBURG

Highlights

- Diamond drill hole **DD003B** (drilled easterly from the DD003 pad on the northern flank of the Kameelburg carbonatite) has confirmed the Company's zoning model: **a high-grade niobium domain occupies the margin of the carbonatite intrusive**, while high-grade rare-earth (REE) mineralisation is concentrated toward the centre of the intrusion.
- DD003B returned a cumulative **169.7m at 0.81% TREO, 3.21% SrCO₃ and 0.43% Nb₂O₅**, confirming a broad, niobium-enriched horizon on the carbonatite margin.
- This envelope includes several discrete high-grade niobium sub-zones¹:
 - **8m at 1.23% Nb₂O₅** (from 149-157m)
 - **3m at 0.81% Nb₂O₅** (from 177-180m)
 - **10m at 0.59% Nb₂O₅** (from 182-192m)
 - **12m at 0.60% Nb₂O₅** (from 286-298m)
- Toward the centre of the intrusion the hole intersected a high-grade REE-Sr zone of **5m at 2.94% TREO, 7.64% SrCO₃ and 0.09% Nb₂O₅**, consistent with the REE-rich sovite core intersected in the central-pad holes.
- The result validates the geological prediction that DD003B - drilled to the east across the margin of the intrusion - would preferentially sample the niobium-enriched beforite phase, providing important vectoring and boundary control for the upcoming final Phase II Mineral Resource Estimate (MRE).
- Strontium carbonate (strontanite) again occurs in broad zones at >3% SrCO₃, reinforcing Sr as a major secondary commodity at Kameelburg.
- With DD003B results now received, the Phase II program advances toward the updated MRE scheduled for release in June.

¹ Significant intercepts were derived by adding downhole assays and dividing by the interval to obtain an average for the interval, see Appendix for down hole assays with highlighted layers used in the calculations.

Aldoro Resources Ltd ("**Aldoro**", "**The Company**") (**ASX: ARN**) is pleased to advise that assay results for diamond drill hole DD003B from the flagship Kameelburg REE-Strontium-Niobium Project in Namibia have been received. The hole confirms the Company's mineralisation-zoning model for the carbonatite: high-grade niobium occurs at the margin of the intrusion, whereas high-grade rare-earth mineralisation is concentrated toward the centre of the intrusion.

DD003B is the second hole reported from the DD003 pad on the northern flank of the Kameelburg carbonatite. Whereas DD003A (azimuth 180°) was drilled inwards into the high-grade central core, and DD003C (azimuth 22°) tested the niobium-rich beforite phase to the north-east, DD003B was drilled easterly (azimuth 090°, dip -65°) to a depth of 438.9m, specifically to test the projection of the mineralised package across the eastern margin of the central magnetic anomaly. Together with previously reported holes DD003A, DD003C, DD004E, DD004F, DD005E, DD005F, DD005G, DD008D and DD018A², the results continue

to confirm a wide, multi-commodity REE-Sr-Nb-Mo mineralised system **extending in all directions from the central core of the carbonatite.**

²(ASX releases DD003A-4/5/26, DD003C-13/5/26, DD004E – 15/4/26, DD004F – 21/4/26, DD005E-25/3/26., DD005F-30/3/26, DD005G-8/4/26, DD008D -15/5/26, DD018A-4/5/26)

Applying a 0.1% Nb₂O₅ cut-off, DD003B returned a cumulative **169.7m at 0.81% TREO, 3.21% SrCO₃ and 0.43% Nb₂O₅.** The niobium tenor is materially higher than that of the central-core holes, consistent with the interpretation that the margin of the intrusion preferentially hosts the niobium-bearing beforosite phase. The mineralisation expresses the same layered sovite-beforsite architecture observed elsewhere in the complex.

Diamond Hole Assay - DD003B

The cumulative 0.1% Nb₂O₅ envelope incorporates several discrete high-grade niobium sub-zones, the most significant being **8m at 1.23% Nb₂O₅ (149-157m).** Additional niobium-rich intervals of 3m at 0.81% Nb₂O₅ (177-180m), 10m at 0.59% Nb₂O₅ (182-192m) and 12m at 0.60% Nb₂O₅ (286-298m) confirm that the niobium-bearing horizon is laterally persistent along the eastern margin of the carbonatite.

Toward the centre of the intrusion, the hole intersected a high-grade REE-Sr zone of **5m at 2.94% TREO, 7.64% SrCO₃ and 0.09% Nb₂O₅.** The inverse relationship between niobium and rare-earth tenor across the hole - niobium increasing toward the margin and rare earths increasing toward the centre - provides clear geological vectoring and is an important control for the upcoming Phase II MRE.

Initial geological interpretation indicates that DD003B has confirmed the predicted concentric zonation of the carbonatite, with niobium-enriched beforosite at the margin grading inward to a rare-earth and strontium-rich sovite core. This boundary control is an important geological input for the Phase II MRE wireframes.

Drilling Cross Section Showing the Mineralisation Zoning

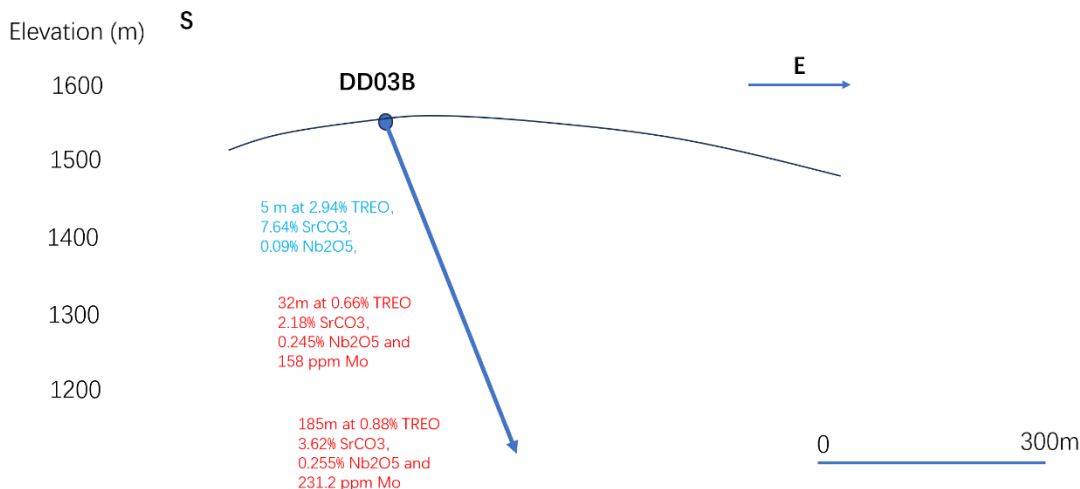


Figure 1: Drilling cross section illustrating mineralisation zoning across DD003B, drilled easterly across the eastern margin of the Kameelburg carbonatite.

For personal use only

Significant Intercepts - DD003B

A highlighted summary of mineralised intercepts across DD003B is presented in Table 1.

Hole_ID	Depth From (m)	Depth To (m)	Interval (m)	TREO %	Nb2O5 %	SrCO3 %	Layer
DD003B	0	436.7	169.7	0.81	0.43	3.21	Nb cutOff (0.1%)
incl.	149	157	8	0.54	1.23	1.8	Nb sub-zone
incl.	177	180	3	0.76	0.81	2.5	Nb sub-zone
incl.	182	192	10	0.83	0.59	3.41	Nb sub-zone
incl.	286	298	12	0.62	0.6	2.64	Nb sub-zone
DD003B	350	355	5	2.94	0.09	7.64	REE-Sr core

Table 1: DD003B significant intercepts. The headline interval is reported on a 0.1% Nb₂O₅ cut-off; high-grade niobium sub-zones (highlighted) and the central REE-Sr zone are quoted on contiguous downhole assays. Intervals are downhole lengths; true widths are not reported. TREO and SrCO₃ grades for the niobium sub-zones are length-weighted averages of the corresponding 1m assays.

Drilling Update

With the Phase II diamond program complete (15 holes for 7,190m), the Company continues to receive assays progressively. DD003B was drilled from the DD003 pad and complements the previously reported DD003A (central core) and DD003C (north-eastern margin) holes, providing a third orientation through the northern sector of the carbonatite and constraining the eastern boundary of the mineralised envelope.

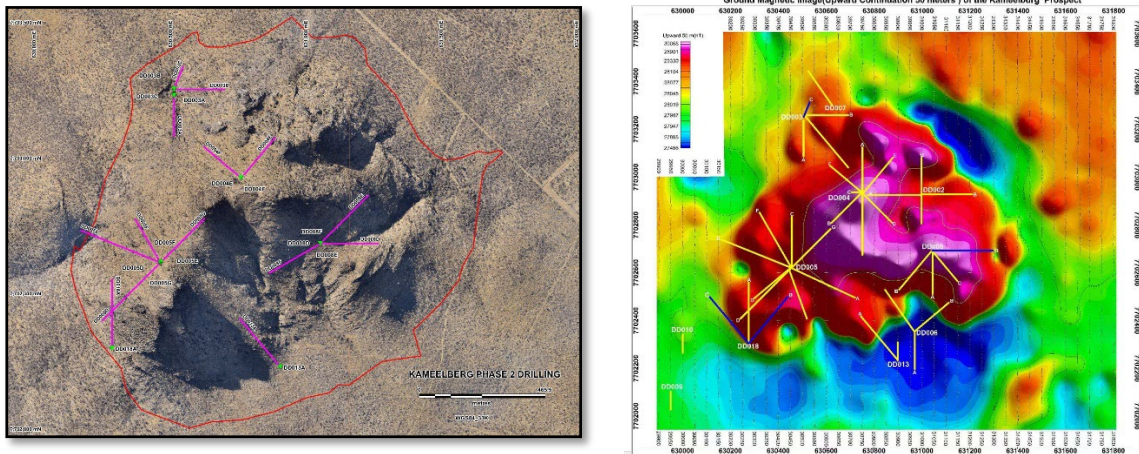


Figure 2: Diamond drill hole plan view of the Phase 2 drilling programme (left) & magnetic overlay (right).

The confirmation of a niobium-enriched margin grading inward to a rare-earth-rich core materially de-risks the geological model underpinning the upcoming Mineral Resource Estimate. The updated Mineral Resource Estimate, which will incorporate all Phase II diamond holes, is anticipated to be released upon receipt of the remaining Phase II assays.

A summary of drilling to date is as follows:

No.	Borehole ID	UTM Zone	Easting	Northing	Elevation (m)	Azimuth	Dip (degrees)	Drilled Depth (m)	Assay Status	Location	Planned depth (m)
1	DD003A	33K	630505	7703237	1,454	180	-60	300.2	Received	DD003 Pad	600
2	DD003B	33K	630506	7703259	1,530	90	-65	438.9	Received	DD003 Pad	500
3	DD003C	33K	630505	7703261	1,528	22	-65	214.7	Received	DD003 Pad	500
4	DD004E	33K	630754	7702933	1,742	40	-60	387.2	Received	DD004 Pad	750
5	DD004F	33K	630752	7702933	1,740	310	-60	354.2	Received	DD004 Pad	750
6	DD005D	33K	630454	7702620	1,703	225	-60	604.4	Awaiting	DD005 Pad	650
7	DD005E	33K	630453	7702621	1,705	292	-60	629.9	Received	DD005 Pad	750
8	DD005F	33K	630454	7702621	1,702	330	-65	434.9	Received	DD005 Pad	700
9	DD005G	33K	630457	7702622	1,705	45	-65	537.7	Received	DD005 Pad	700
10	DD008D	33K	631046	7702691	1,643	90	-65	503.9	Received	DD008 Pad	600
11	DD008E	33K	631046	7702691	1,643	45	-60	500.9	Awaiting	DD008 Pad	600
12	DD008F	33K	631046	7702691	1,643	240	-60	556	Awaiting	DD008 Pad	600
13	DD008G	33K	631046	7702691	1,643	330	-60	573.5	Awaiting	DD008 Pad	650
14	DD013A	33K	630898	7702235	1,536	320	-65	550.5	Awaiting	DD013 Pad	600
15	DD018A	33K	630276	7702304	1,614	360	-65	603.1	Received	DP002 Pad	560
Total								7190.0			

Table 2: Completed Phase 2 drilling summary. DD003B (highlighted) has now been fully assayed.

In relying on the above mentioned ASX announcements and pursuant to ASX Listing Rule 5.23.2, the Company confirms that it is not aware of any new information or data that materially affects the information included in the above-mentioned announcements, and in the case of estimates of mineral resources, all material assumptions and technical parameters underpinning the estimates in the relevant market announcements continue to apply and have not materially changed.

Authorised for and on behalf of the Board,

Sarah Smith
Company Secretary

About Aldoro Resources

Aldoro Resources Ltd is an ASX-listed (**ASX: ARM**) mineral exploration and development company. Aldoro has a portfolio of critical minerals including rare earth, lithium, rubidium and base metal projects. The Company's suite of projects include the Kameelburg REE & Niobium Project in Namibia, the Niobe lithium-rubidium-tantalum project and the Narndee Igneous Complex project in Western Australia.

Disclaimer

Some of the statements appearing in this announcement may be in the nature of forward-looking statements. You should be aware that such statements are only predictions and are subject to inherent risks and uncertainties. Those risks and uncertainties include factors and risks specific to the industries in which Aldoro operates and proposes to operate as well as general economic conditions, prevailing exchange rates and interest rates and conditions in the financial markets, among other things. Actual events or results may differ materially from the events or results expressed or implied in any forward-looking statement. No forward-looking statement is a guarantee or representation as to future performance or any other future matters, which will be influenced by a number of factors and subject to various uncertainties and contingencies, many of which will be outside Aldoro's control.

For personal use only

Aldoro does not undertake any obligation to update publicly or release any revisions to these forward-looking statements to reflect events or circumstances after today's date or to reflect the occurrence of unanticipated events. No representation or warranty, express or implied, is made as to the fairness, accuracy, completeness or correctness of the information, opinions or conclusions contained in this announcement. To the maximum extent permitted by law, none of Aldoro, its Directors, employees, advisors or agents, nor any other person, accepts any liability for any loss arising from the use of the information contained in this announcement. You are cautioned not to place undue reliance on any forward-looking statement. The forward-looking statements in this announcement reflect views held only as of the date of this announcement.

This announcement is not an offer, invitation or recommendation to subscribe for or purchase securities by Aldoro. Nor does this announcement constitute investment or financial product advice (nor tax, accounting or legal advice) and is not intended to be used for the basis of making an investment decision. Investors should obtain their own advice before making any investment decision.

Competent Person Statement

The information in this announcement that relates to Exploration Results and other technical information is based on information compiled by Dr Minlu Fu (a non-executive director of the Company) and complies with the 2012 Edition of the Australasian Code for Reporting of Exploration Results, Mineral Resources and Ore Reserves (JORC Code). It has been reviewed by Mr Jeremy Clark and Mr Mark Mitchell.

Mr. Mark Mitchell is a Member of the Australasian Institute of Geoscientists (AIG). Mr Mitchell is an independent consultant and not an employee of Aldoro and has sufficient experience that is relevant to the style of mineralisation and type of deposit under consideration and to the activity being undertaken to qualify as a Competent Person as defined in the 2012 Edition of the JORC Code. Mr Mitchell consents to the inclusion in this announcement of the matters based on his information in the form and context in which it appears.

For personal use only

Appendix 1: Down hole assays – Lanthanides, Yttrium, Niobium, Molybdenum and Strontium

Drill Collar DD003B (Dominant Mineralisation highlighted **REE** Nb and bold text used for quoted layers)

Sample No	Depth From (m)	Depth To (m)	Ce ppm	Dy ppm	Er ppm	Eu ppm	Gd ppm	Ho ppm	La ppm	Lu ppm	Nd ppm	Pr ppm	Sm ppm	Tb ppm	Tm ppm	Y ppm	Yb ppm	Nb ppm	Mo ppm	Sr ppm	TREO %	Nb2O5 %	NdPr %	SrCO3 %
DD003B DD003B-001	0	2	2856.4	25.5	7.4	22.1	49.4	3.8	1994.4	0.5	838.7	275	96.5	5.4	0.8	100.1	4.1	1154	102	4558	0.74	0.17	17.66%	0.77
DD003B DD003B-002	2	3	3554	35.1	10.8	27.4	61.6	5.3	2521.1	0.6	1034.3	337.9	118.2	7	1.2	147.7	5.4	570	144	4878	0.92	0.08	17.37%	0.82
DD003B DD003B-003	3	4	1849.7	23.4	7.6	15.7	37.2	3.7	1189.9	0.4	564.7	179.6	70.2	4.5	0.8	92.8	3.7	766	47	3212	0.47	0.11	18.33%	0.54
DD003B DD003B-004	4	5	1428.6	25.9	9.9	14.1	35.7	4.7	916	0.6	412.8	132.2	56	4.8	1.2	117.6	5.5	471	17	4980	0.37	0.07	17.12%	0.84
DD003B DD003B-005	5	6	1783.4	29.6	9.2	18.4	45.5	4.5	1210.5	0.5	539.3	170	72.7	5.6	1.1	114.9	4.8	582	28	3174	0.47	0.08	17.60%	0.53
DD003B DD003B-006	6	7	1169.5	18.2	6.1	12.8	32.1	2.8	679.3	0.4	394.8	120.1	53.2	3.7	0.7	74.3	3.6	549	41	2505	0.30	0.08	19.93%	0.42
DD003B DD003B-007	7	8	1857.7	29.1	11	19.8	49.8	4.9	1193.6	0.7	549.6	170	73.6	5.9	1.4	117.9	6.5	674	44	4222	0.48	0.10	17.50%	0.71
DD003B DD003B-008	8	9	994.3	24.3	11.3	11	30.4	4.6	648.8	0.8	285.2	90.7	39.1	4.4	1.5	120.9	7.3	301	11	3823	0.27	0.04	16.42%	0.64
DD003B DD003B-009	9	10	2602.6	25.2	8.6	21	50.7	3.8	1896.8	0.6	695.1	233.1	83.3	6	1	92.1	5.2	448	32	4320	0.67	0.06	16.15%	0.73
DD003B DD003B-010	10	11	1471.4	20.9	7	13.8	36.6	3.1	1013.6	0.4	420.5	134	54.6	4.5	0.8	80.1	3.9	397	13	4402	0.38	0.06	16.91%	0.77
DD003B DD003B-011	11	12	2349.7	24	6.1	22.4	53.4	3.3	1587.2	0.4	687	218.5	88.9	5.9	0.7	73.5	3.6	368	14	10508	0.60	0.05	17.60%	1.04
DD003B DD003B-013	12	13	600.1	19.1	7.7	8.4	23.7	3.4	371.6	0.6	204	62.2	30.3	3.4	1	84.4	5.5	250	6	6721	0.17	0.04	18.55%	1.13
DD003B DD003B-014	13	14	413.6	42.7	15.2	10.4	40.3	7.2	244.3	1	151.7	43.8	27.4	7.4	1.8	171.5	8.4	258	40	4209	0.14	0.04	16.27%	0.71
DD003B DD003B-015	14	15	825.4	30.2	12	12	35.9	5.2	473.9	0.9	266.3	80.1	41.3	5.4	1.5	128.9	7.9	378	52	6151	0.23	0.05	17.85%	1.04
DD003B DD003B-016	15	16	3333.2	29.5	8.5	23.8	58.1	4.2	2350.1	0.5	848	291.6	96.7	6.6	0.9	101.3	4.2	779	534	20974	0.84	0.11	15.86%	3.53
DD003B DD003B-017	16	17	1607.3	26.3	8.2	19.5	49.7	3.9	1052.2	0.6	499.1	154.2	73.4	6	0.9	94.9	4.9	458	48	14340	0.42	0.07	18.06%	2.42
DD003B DD003B-018	17	18	1435.2	30	11.3	14.6	41	5	1008.7	0.8	401.7	129.2	56.4	5.5	1.4	126.4	6.9	483	40	12992	0.38	0.07	16.13%	2.19
DD003B DD003B-019	18	19	1549.5	26.9	10.1	14.2	38.2	4.5	1042.3	0.7	418.7	139.8	52.7	5	1.3	110.1	6.3	409	100	9995	0.40	0.06	16.25%	1.68
DD003B DD003B-020	19	20	2479.3	26.8	7.3	22.3	54.7	3.5	1614	0.5	726.5	232.6	89.8	6.6	0.9	82.7	4.7	532	75	14576	0.63	0.08	17.85%	2.46
DD003B DD003B-022	20	21	1534.9	24.9	9.3	16.7	41.8	4.1	948.6	0.7	481.8	147.2	66.9	5.2	1.2	100.5	5.9	431	71	9647	0.40	0.06	18.47%	1.63
DD003B DD003B-023	21	22	1005.3	16.7	6.4	11.2	28.5	2.7	596.6	0.5	313.9	95.2	42.5	3.4	0.8	69	4.6	450	53	5950	0.26	0.06	18.53%	1.00
DD003B DD003B-024	22	23	1302.8	22.1	8.2	14.8	36.9	3.6	764.7	0.6	411.5	124.5	56.8	4.5	1.1	89.4	5.6	409	56	8584	0.33	0.06	18.74%	1.45
DD003B DD003B-025	23	24	1354.1	20.5	7.5	14.1	34.8	3.5	763.9	0.6	443	135.6	55.9	4.3	1	81.7	5.3	403	70	7354	0.34	0.06	19.69%	1.24
DD003B DD003B-027	24	25	1256.8	22.8	8.8	15	38.7	4	727.5	0.7	415.5	122.5	57.5	4.7	1.1	97.4	5.9	445	134	8776	0.33	0.06	19.26%	1.48
DD003B DD003B-028	25	26	1579	27.2	9.1	19	48	4.1	996.2	0.6	506	154.1	73.6	5.8	1.1	103.5	5.5	585	83	11141	0.41	0.08	18.60%	1.88
DD003B DD003B-029	26	27	1678.1	22.8	7	19.4	46.2	3.4	1035.5	0.5	547.9	164	74.7	5	0.9	82.1	4.4	632	91	10491	0.43	0.09	19.20%	1.77
DD003B DD003B-031	27	28	1504.5	22	7.2	17.7	43.6	3.4	897.1	0.5	489.9	145.4	69.5	4.9	0.9	79.8	4.4	424	80	10873	0.39	0.06	19.22%	1.83
DD003B DD003B-032	28	29	1206.4	24.2	9.2	14.8	40.2	4.1	718.9	0.7	381.8	114.7	55	5	1.2	98.3	6	454	96	6602	0.31	0.06	18.43%	1.11
DD003B DD003B-033	29	30	1283.9	23.6	9.4	15.1	39.5	4	734.5	0.7	399.9	121	55.4	4.8	1.2	99.7	6.4	403	38	15785	0.33	0.06	18.51%	2.66
DD003B DD003B-034	30	31	1479.1	33.5	12.5	20.3	54.8	5.6	838.8	0.9	484.5	142.9	72.5	6.8	1.6	139.9	7.6	571	40	8018	0.39	0.08	18.90%	1.35
DD003B DD003B-035	31	32	1496.6	28.6	11.2	17.3	45.7	4.6	894.1	0.7	456	141.9	63.7	5.6	1.3	116.2	6.3	443	90	8205	0.39	0.07	18.08%	1.98
DD003B DD003B-036	32	33	1244.8	19.7	7	13.1	34.7	3.2	743.3	0.5	374.2	115.6	52.3	4.1	0.9	75.8	4	477	87	9264	0.32	0.07	18.10%	1.56
DD003B DD003B-037	33	34	1553.7	28.2	10	18.3	46.4	4.3	1014.6	0.7	457.5	142.1	65.3	5.6	1.3	108.6	6.1	443	97	8609	0.41	0.06	17.23%	1.11
DD003B DD003B-038	34	35	2119	36	14.2	24.9	63.2	6	1328.7	1	673.3	204.5	93.8	7.5	1.8	146.5	9.3	584	73	8100	0.55	0.08	18.47%	1.36
DD003B DD003B-040	35	36.63	1702.4	57.2	27.4	23.1	64.9	11	1078.9	2	538.5	161.6	77.9	9.5	3.7	280.6	17.6	615	123	7001	0.48	0.09	17.13%	1.11
DD003B DD003B-041	36.63	37	3159.3	209.4	86.3	63.2	200.6	37.5	1882.2	5.1	1132.8	322.8	193.7	34	10.4	933.7	44.5	413	11	18000	9.98	0.06	17.32%	3.03
DD003B DD003B-042	37	38.08	3051.1	83.3	30.7	49.2	126.4	14.1	1772.6	1.7	1127.1	320.2	173.6	16	3.7	332.5	15	43	21	28379	0.84	0.10	20.22%	4.78
DD003B DD003B-043	38.08	39	2600	38.8	12	37.2	88.4	5.7	1558.9	0.8	926.1	267	139	9.2	1.4	135.2	7	612	27	20300	0.68	0.09	20.39%	3.42
DD003B DD003B-044	39	40	1968.1	40.9	12.3	32.9	82.2	5.9	1158.4	0.8	706.9	200.8	117	9	1.5	142.8	7.4	319	52	16502	0.53	0.05	20.14%	2.78
DD003B DD003B-045	40	41	950.5	33.6	13.1	13.6	40.2	5.6	547.2	0.9	305	90.9	46.6	5.8	1.8	139.1	8.1	412	61	4270	0.26	0.06	17.85%	0.72
DD003B DD003B-046	41	42	1017.3	33.7	17.1	13.2	36	6.5	618.1	1.4	304.5	93.6	44.9	5.3	2.5	166.8	12.5	378	79	6750	0.28	0.05	16.64%	1.14
DD003B DD003B-047	42	43	1988.9	28.3	10.6	23.2	56.4	4.7	1297.2	0.9	625.5	188.9	90.9	6.3	1.5	114.3	8.1	713	100	9844	0.52	0.10	18.24%	1.66
DD003B DD003B-048	43	44	2460.3	28.5	10.7	23.3	57.2	4.4	1693	0.9	715	227.3	96.1	6.3	1.4	110.7	7.9	725	168	8175	0.64	0.10	17.24%	1.98
DD003B DD003B-049	44	45	2379	29.9	9.6	25.2	63	4.4	1640.2	0.6	717.9	220	98.1	6.8	1.2	103.5	5.5	1080	190	17711	0.62	0.15	17.61%	2.38
DD003B DD003B-050	45	46	2119.8	17.5	4.9	16.1	40.8	2.4	1593.4	0.4	545.3	181.9	67.5	4.2	0.6	57.5	3.4	469	99	9365	0.55	0.07	15.56%	1.58
DD003B DD003B-051	46	47	3260.3	19.5	4.9	23.7	54.8	2.5	2397.8	0.3	846.8	285.1	99	5.2	0	56.4	2.4	374	167	18952	0.83	0.07	15.98%	3.19
DD003B DD003B-053	47	48	2996.6	18.4	4.9	20.1	48	2.3	2305.2	0.4	724.4	250.8	83.2	4.9	0.6	55.2	3.2	425	120	12200	0.76	0.06	14.91%	2.06
DD003B DD003B-054	48	49	2103.7	17.6	5.3	16.3	39.8	2.5	1559.3	0.4	540.9	181.5	67.6	4.1	0.7	59.2	3.8	603	89	10372	0.54	0.09	15.64%	1.75
DD003B DD003B-055	49	50	989	12.7	4.3	8.9	22.6	1.9	618.3	0.3	281.6	87.6	37.2	2.6	0.5	45.3	3.1	360	108	7888	0.25	0.05	17.38%	1.33
DD003B DD003B-056	50	51	1245.4	19.8	7.2	14.1	35.9	3.2	747.5	0.5	371.9	114.7	54.8	4.2	0.9	75.7	4.3	347	72	8549	0.32	0.05	17.94%	1.44
DD003B DD003B-057	51	52	1552.6	18.7	6.9	14.4	36.4	3	1040.2	0.6	451.2	141.9	60.8	3.9	1	73.2	5	389	43	12754	0.40	0.06	17.32%	2.15
DD003B DD003B-058	52	53	1823.4	22.3	6.8	15.7	40.3	3.3																

Hole_ID	Sample No	Depth_From (m)	Depth_To (m)	Ce ppm	Dy ppm	Er ppm	Eu ppm	Gd ppm	Ho ppm	La ppm	Lu ppm	Nd ppm	Pr ppm	Sm ppm	Tb ppm	Tm ppm	Y ppm	Yb ppm	Nb ppm	Mo ppm	Sr ppm	TREO	Nb2O5 %	NdPr %	SrCO3 %
DD003B	DD003B-088	79	80	1051.1	20.6	7.5	9	26.3	3.7	671.4	0.4	278.3	91.4	36.4	3.5	0.8	87.2	3.5	491	145	4319	0.27	0.07	16.05%	0.73
DD003B	DD003B-089	80	81	2508.7	54.2	18.7	37.5	94.3	8.7	1311.1	1.1	987.7	271.9	147.1	10.7	2.2	205	9.6	2184	32	12102	0.66	0.31	22.11%	2.04
DD003B	DD003B-090	81	82	2413.3	61	22.2	43.7	105.7	10.3	1135.7	1.4	1069.5	275.7	168.2	12.3	2.6	245.3	12	251	6	16842	0.65	0.04	23.98%	2.84
DD003B	DD003B-091	82	83	2765.5	56.5	19.5	46.2	108.4	9.2	1331.4	1.1	1214.9	318.6	182	12.1	2.3	215.5	9.7	90	2	24343	0.74	0.01	24.26%	4.10
DD003B	DD003B-093	83	84	2958.1	65.1	21.1	51.7	122.7	10	1488	1.2	1230.5	331.3	193.2	14.1	2.4	236.8	10.8	697	3	18779	0.79	0.10	23.07%	3.16
DD003B	DD003B-094	84	85	2595.2	83.6	27.1	51.1	135	13.3	1253.9	1.6	1114	293.5	183.4	16.4	3.2	310	14	458	4	20009	0.72	0.07	22.96%	3.37
DD003B	DD003B-095	85	86	1899.9	83.3	30.6	42.9	115.8	14.1	850.5	1.8	841.2	219.6	144.5	15.2	3.8	329	16.2	238	6	17088	0.54	0.03	22.85%	2.88
DD003B	DD003B-096	86	87	2141.1	70.3	26.3	42.9	109.4	11.7	1042.3	1.6	936	242.1	153.2	13.6	3.3	284.3	14	171	4	18254	0.60	0.02	22.99%	3.08
DD003B	DD003B-097	87	88	2434.8	68.1	24	44.4	111.3	11	1205.4	1.4	1029.4	271.1	166.6	13.3	2.9	265.2	12.6	158	2	18094	0.66	0.02	22.84%	3.05
DD003B	DD003B-098	88	89	2673.8	58	19.3	45.4	107.9	8.9	1318.1	1.1	1166.2	305.8	174.5	11.7	2.4	216.3	9.7	342	<1	20822	0.72	0.05	23.94%	3.51
DD003B	DD003B-099	89	90	2372.8	59.5	20.4	42.7	103.5	9.7	1122.8	1.3	1013.4	267.3	159.6	11.8	2.5	235.8	11.1	614	<1	20630	0.64	0.09	23.44%	3.48
DD003B	DD003B-100	90	91	2447.8	59.7	19.4	43.6	103.7	9.4	1209.7	1.3	1039.1	274.4	165.7	12.4	2.1	221	11.1	466	<1	21036	0.66	0.07	23.25%	3.54
DD003B	DD003B-102	91	92	2993.5	62.8	20.4	48.9	115.9	9.7	1484.2	1.2	1248.4	331.5	189.6	13.4	2.3	228.1	10.3	667	<1	25584	0.79	0.10	23.26%	4.31
DD003B	DD003B-103	92	93	3305.8	78.8	24.1	59.9	146.9	11.8	1637.9	1.4	1401.2	376.8	223.5	16.6	2.7	269.8	12	962	2	28569	0.89	0.14	23.38%	4.81
DD003B	DD003B-104	93	94	3530.4	70.6	22.4	56.3	135.5	11	1737.1	1.4	1463.8	399	217.6	15.1	2.6	247.6	11.9	673	6	29885	0.93	0.10	23.41%	5.04
DD003B	DD003B-105	94	95	3541.1	66.3	20.6	55.8	129.4	9.7	1758.3	1.2	1477	395.8	219.8	14.3	2.4	225.8	10.8	378	1	30656	0.93	0.05	23.52%	5.17
DD003B	DD003B-107	95	96	3447.8	77.7	23.5	62.2	147.3	11.5	1708	1.3	1470	387.8	227.6	16.8	2.6	258.7	11.8	940	5	26611	0.92	0.13	23.54%	4.48
DD003B	DD003B-108	96	97	3254.8	74.7	24.2	58.2	139.8	11.5	1638.8	1.5	1367.1	361.5	213.8	15.5	2.8	288	13.4	871	<1	27135	0.87	0.12	23.11%	4.57
DD003B	DD003B-109	97	98	3290.8	84.6	30.8	59.9	149.9	13.8	1642.8	2	1325.6	359.1	216.7	17.5	3.7	326.4	17.8	1305	<1	25070	0.88	0.19	22.22%	4.22
DD003B	DD003B-111	98	99	2979.3	63.1	26.1	45.4	106.5	10.9	1402.7	2.1	1182.7	329.8	171.7	12.9	3.4	275.3	18.2	534	<1	23202	0.78	0.08	22.60%	3.91
DD003B	DD003B-112	99	100	3291.9	73.6	31.9	53.2	125.3	12.5	1587.9	3.5	1342.6	372.4	195.9	15	5	322	30.7	541	1	23833	0.88	0.08	22.86%	4.02
DD003B	DD003B-113	100	101	3330.1	49.1	19.1	43.8	98.1	7.9	1629.1	1.8	1282.1	366.6	172.8	10.7	2.6	194.3	15.4	413	<1	23255	0.85	0.06	22.73%	3.92
DD003B	DD003B-114	101	102	3557.7	67.7	25.2	52.7	119.9	11.4	1740.1	2	1394	396.4	196.4	14	3.3	267.8	17.2	644	<1	23245	0.92	0.09	22.65%	3.92
DD003B	DD003B-115	102	103	3541.9	41.6	13.7	45.9	94.3	6.2	1737.6	0.9	1372.7	392.1	181.3	9.8	1.6	150.1	8.1	398	<1	22453	0.89	0.06	23.14%	3.78
DD003B	DD003B-116	103	104	3472	38	13.1	44.5	91.6	6.1	1681.9	0.9	1352.2	387.1	177.7	8.9	1.7	151.3	8.1	277	<1	25181	0.87	0.04	23.30%	4.24
DD003B	DD003B-117	104	105	3543.4	38.6	12.5	45	92.3	5.8	1710.4	0.8	1378.5	394.9	182.5	9.2	1.4	142.6	7.1	587	<1	25845	0.89	0.08	23.36%	4.35
DD003B	DD003B-118	105	106	3485.2	39.9	14.5	46.2	95.8	6.3	1713	0.9	1388.8	395.6	185.1	9.6	1.5	158.3	7.5	642	1	23855	0.88	0.09	23.55%	4.02
DD003B	DD003B-120	106	107	3311	51.6	17.5	52.6	109.9	7.9	1619.9	1.1	1369.9	375.9	201.4	11.8	2	193.6	10	586	<1	25042	0.86	0.08	23.71%	4.22
DD003B	DD003B-121	107	108	3176	55.7	19.2	55.7	119	8.7	1479.2	1.3	1383.7	370.4	214.6	12.9	2.3	218.3	11.5	955	6	10519	0.84	0.14	24.50%	4.77
DD003B	DD003B-122	108	109	3324.5	51.7	18.6	51.2	107.5	8.2	1593.9	1.2	1389.5	381	193.8	11.7	2.2	208.4	10.1	717	16	10694	0.86	0.10	23.77%	1.80
DD003B	DD003B-122	109	110	3206.8	86.5	31.6	53.5	127.1	14.8	1568.8	1.9	1332.6	366.7	196.9	16.5	3.6	357.4	16.5	2145	2	22906	0.87	0.31	22.89%	4.86
DD003B	DD003B-123	110	111	3309.1	50.8	17.7	49.2	103.8	7.9	1603.5	1.2	1364.3	372.7	197.8	11	2.2	205.2	10.7	362	<1	24732	0.86	0.05	23.67%	3.17
DD003B	DD003B-124	111	112	3339.4	61.3	20.5	56.4	124.4	9.4	1608.9	1.2	1401.9	382.3	212.7	13.7	2.5	231	10.8	1312	<1	22496	0.88	0.19	23.76%	3.90
DD003B	DD003B-125	112	113	3376.4	52.1	18	50.2	107	8.4	1650.1	1.2	1381.9	384.9	192.4	11.7	2.1	204.3	10.5	618	<1	23148	0.87	0.09	23.60%	3.79
DD003B	DD003B-126	113	114	3398.3	51.8	17	54.9	115	7.7	1607.7	1.1	1430.8	387	219.6	12	1.9	191.4	9.3	795	<1	21822	0.88	0.11	24.12%	3.68
DD003B	DD003B-127	114	115	3522.3	40.9	14.5	42.8	88.8	6.7	1691.5	1.1	1435.1	396.9	180.3	9	1.8	161.3	9.3	373	<1	20891	0.89	0.05	23.81%	3.52
DD003B	DD003B-128	115	116	3451.2	76.6	28.9	61.6	136.5	12.5	1643.9	2	1506	400.2	233.1	15.7	3.7	307.9	17.4	545	<1	21415	0.93	0.08	24.02%	3.61
DD003B	DD003B-129	116	117	3425	79.6	32.8	60.1	137	13.7	1631.6	2.4	1487	398.6	228.7	16.1	4	338.8	21.4	637	<1	21629	0.92	0.09	23.81%	3.64
DD003B	DD003B-130	117	118	3527.3	52.5	18.4	48.4	102.2	8.2	1700.4	1.4	1450.3	409.2	197.4	11.3	2.3	201.6	12.1	2161	<1	21854	0.91	0.31	23.92%	3.68
DD003B	DD003B-132	118	119	3400.5	46.3	18.4	47	97.1	7.6	1640.6	1.6	1365	380.5	187.2	10.3	2.5	201	13.6	411	2	19863	0.87	0.06	23.63%	3.35
DD003B	DD003B-133	119	120	2870.1	36.6	14.4	39	79.9	6.1	1398.4	1.1	1165.4	323.2	158.4	8.6	1.9	154.7	9.9	497	672	17691	0.73	0.07	23.65%	2.98
DD003B	DD003B-134	120	121	3087.5	56.8	19.8	51	112.9	8.9	1470.6	1.5	1266.2	349.3	191.3	12.5	2.4	228.4	13.1	1823	<1	18537	0.81	0.26	23.40%	3.12
DD003B	DD003B-135	121	122	3015.2	59.3	19.5	51.2	115.5	9.3	1434.4	1.3	1263.1	345.7	193.9	12.9	2.4	229.1	11.4	1753	1	18815	0.79	0.25	23.67%	3.17
DD003B	DD003B-136	122	123	2619.1	47.2	15.4	38.4	86.4	7.2	1294.9	1	1007.1	285.9	140.7	10.3	1.8	171.9	8.6	1053	<1	17852	0.67	0.15	22.44%	3.01
DD003B	DD003B-137	123	124	2876.3	78.6	25.9	57.5	139.1	12.3	1403	1.7	1176.6	323.3	191.2	16.9	3	296.8	14.5	619	<1	18184	0.78	0.09	22.55%	3.06
DD003B	DD003B-138	124	125	3351.7	73	25.4	59.9	137.6	11.4	1611.6	1.7	1358.2	378.8	213.5	15.6	3	276.8	14.5	1041	<1	23715	0.88	0.15	22.93%	4.00
DD003B	DD003B-139	125	126	3709	73.6	25.7	65.5	147.6	11.5	1786.8	1.7	1576.1	426.7	242.1	16.5	3.2	286	15	852	<1	22774	0.88	0.12	23.77%	3.84
DD003B	DD003B-140	126	127	3114.6	78.3	26.9	57.8	137	12.5	1485.7	1.9	1307.7	355.9	209.6	16.6	3.3	309.1	16.3	969	<1	16546	0.94	0.14	23.20%	2.94
DD003B	DD003B-141	127	128	3247.7	78.1	28.2	53.6	124.6	12.7	1555	1.8	1339.8	366.3	198.6	15.4	3.4	314.1	16	567	<1	21051	0.86	0.08	23.07%	3.55
DD003B	DD003B-142	128																							

For personal use only

Hole_ID	Sample No	Depth_From (m)	Depth_To (m)	Ce ppm	Dy ppm	Er ppm	Eu ppm	Gd ppm	Ho ppm	La ppm	Lu ppm	Nd ppm	Pr ppm	Sm ppm	Tb ppm	Tm ppm	Y ppm	Yb ppm	Nb ppm	Mo ppm	Sr ppm	TREO	Nb2O5 %	NdPr %	SrCO3 %
DD003B	DD003B-190	169	170	328.8	13	5.6	7.8	21.1	2.3	158.3	0.4	149.8	40.2	26.4	2.6	0.7	56.7	3.9	1093	2	5315	0.10	0.16	23.08%	0.90
DD003B	DD003B-191	170	171	2616.1	47	13.9	44.8	101.7	6.9	1271.3	0.9	1065.2	293.5	167.7	11	1.7	163	8.3	4774	1	17999	0.68	0.68	23.28%	3.03
DD003B	DD003B-192	171	172	2203.6	35	10.7	31.1	69.6	5.2	1057.2	0.7	894	247.5	118.1	7.7	1.3	122.2	6.3	4639	3	12250	0.56	0.66	23.63%	2.06
DD003B	DD003B-193	172	173	2707.8	49.3	16.3	44.8	100.9	7.5	1305.4	1.2	1141.6	306.7	167	11	2	183.8	10.2	2764	1	17300	0.71	0.40	23.81%	2.91
DD003B	DD003B-194	173	174	3016.2	50.2	17	44	98	7.9	1506.1	1.3	1232.7	339	169.7	11	2.1	192.3	11.1	2305	1	20169	0.79	0.33	23.36%	3.40
DD003B	DD003B-195	174	175	2189	33.7	11.6	28	63.2	5.1	1098.5	0.9	876	244.7	115.6	7	1.5	130.2	8	5838	<1	12867	0.56	0.84	23.19%	2.17
DD003B	DD003B-196	175	176	2815.6	52.9	19.7	42.7	98.5	8.5	1323.8	1.6	1212.2	324.1	164.4	11.2	2.4	213.1	14.1	2673	1	23183	0.74	0.38	24.25%	3.91
DD003B	DD003B-197	176	177	3211.7	55	20	45.1	102.2	9.1	1603.7	1.5	1318.7	361	182.6	11.5	2.6	223.9	13.2	1941	<1	19264	0.84	0.28	23.35%	3.25
DD003B	DD003B-199	177	178	4099.9	30.1	10.9	27.9	59.7	4.9	2098.9	0.7	1346.9	426.2	127.1	6.3	1.2	120.1	6.3	1767	<1	13494	0.98	0.25	21.11%	2.27
DD003B	DD003B-200	178	179	3156.3	34.8	11.6	42	86.4	5.2	1569.8	0.9	1296.8	356.2	176.4	8.1	1.4	127	8.2	4175	<1	17536	0.81	0.60	23.94%	2.95
DD003B	DD003B-201	179	180	2040.6	19.9	6.9	22.7	48.3	3.1	1026.5	0.6	759.6	218.7	97.3	4.7	0.8	72.5	5	9914	1	13547	0.51	1.42	22.53%	2.28
DD003B	DD003B-202	180	181	3505.2	66.7	23.9	55.1	124	10.9	1759.9	1.7	1433.6	393.9	203.9	14	2.9	273.6	15	3484	<1	20241	0.92	0.50	23.07%	3.41
DD003B	DD003B-203	181	182	4082.8	66.4	24.4	64.2	137.5	10.6	1998.8	1.8	1713.3	466.1	251.1	14.4	2.9	263.3	15.6	1297	<1	26279	1.07	0.19	23.81%	4.43
DD003B	DD003B-204	182	183	2987.6	65.1	26	50.9	117.1	11.3	1474.7	2.3	1240.6	337.8	188.8	13.2	3.5	270.7	20	4674	2	18112	0.80	0.67	23.06%	3.05
DD003B	DD003B-205	183	184	3285.6	38.9	13.7	42.2	89.5	6	1650.1	1.1	1288.7	364.4	171.1	9.1	1.8	155.7	9.5	3550	2	19182	0.84	0.51	23.10%	3.23
DD003B	DD003B-206	184	185	3143	48.7	17.5	46.8	104	7.8	1547	1.5	1244.8	350.6	178.4	11.1	2.3	196.6	13.4	4504	2	18657	0.81	0.64	22.98%	3.14
DD003B	DD003B-207	185	186	1903.8	17.8	6.3	23.3	46.6	2.7	928	0.5	753.8	208.5	98.9	4.6	0.7	65.5	4.6	5550	1	11725	0.48	0.79	23.61%	1.98
DD003B	DD003B-208	186	187	2993.2	82.9	33.1	50.6	123.2	14.2	1473.6	2.6	1217.8	334.5	184.7	15.7	4.4	359.6	22.5	3287	2	20231	0.81	0.47	22.32%	3.41
DD003B	DD003B-209	187	188	3728.9	65.3	23.2	55.1	124.6	10.5	1863.3	1.7	1532.1	422.8	216.6	14.1	2.9	256.9	15.4	1863	<1	25096	0.98	0.27	23.35%	4.23
DD003B	DD003B-210	188	189	3643.9	36.5	11	48.4	98.3	5	1814.7	0.8	1466.3	411.8	196.9	9.3	1.3	128	6.8	1385	1	23425	0.92	0.20	23.75%	3.95
DD003B	DD003B-212	189	190	3689	59.8	22.7	57.6	124.1	9.6	1841.7	2	1540	421.6	220.8	13.2	3.1	250	17.4	3164	<1	24211	0.97	0.45	23.61%	4.08
DD003B	DD003B-213	190	191	2488.9	66.9	30.6	45.7	107.1	12.2	1236.3	2.8	1027.4	279.5	165.7	13.2	4.4	301	24.8	1395	6	17063	0.68	1.63	22.37%	2.87
DD003B	DD003B-214	191	192	3015.8	95.1	45.6	59.1	139.4	17.7	1499	4.1	1259.9	343.3	204.8	17.6	6.5	443.2	35.8	2388	3	20087	0.84	0.47	22.16%	3.38
DD003B	DD003B-215	192	193	3821.2	75.3	32.9	61.6	137.2	13.1	1828.2	2.7	1586.7	435.1	237.1	15.5	4.6	330.2	23.8	571	<1	26361	1.02	0.08	23.32%	4.44
DD003B	DD003B-216	193	194	3557.4	92.5	45.8	62.4	142.1	17.5	1732.1	4.2	1501.7	402	230.3	17.3	6.8	450.7	36.6	970	<1	22967	0.98	0.14	22.78%	3.87
DD003B	DD003B-217	194	195	3096	100	50	57.6	137.4	19.2	1517	4.3	1329.8	355.5	208.4	17.8	7.2	491.1	37.5	419	2	21177	0.87	0.06	22.53%	3.57
DD003B	DD003B-218	195	196	2855.4	82.8	40.7	47.2	111.4	16.1	1396.4	3.4	1186.6	319.7	176.1	14.5	5.8	407.8	30	183	<1	25898	0.79	0.03	22.56%	4.36
DD003B	DD003B-219	196	197	3199.9	103	51.2	50	124.9	20.2	1855.5	4.1	1302.3	357.8	185.7	16.9	7	510.6	36	394	1	22178	0.89	0.06	21.81%	3.74
DD003B	DD003B-220	197	198	3840.5	151.6	70.5	64.7	164.1	29.2	1895.3	5.3	1601.8	439.2	236.1	23.8	9.3	718.9	46.4	382	2	27555	1.09	0.05	21.78%	4.64
DD003B	DD003B-221	198	199	3496.3	164.1	64.7	68.4	184.6	29.9	1709.6	4	1476	399.9	233	27.5	7.9	694.3	35.2	832	2	18576	1.01	0.12	21.65%	3.13
DD003B	DD003B-223	199	200	3074.9	99.5	22.6	45.6	102.6	10	1501.2	1.5	1253.9	348	178.1	12.1	2.7	243.1	13.6	586	<1	21010	0.81	0.08	23.21%	3.54
DD003B	DD003B-224	200	201	2828.8	92.6	32.1	54.9	138.8	15.3	1373.9	1.9	1203.7	318.8	193.9	18	3.7	367.8	16.7	342	<1	19065	0.78	0.05	22.72%	3.21
DD003B	DD003B-225	201	202	2893.5	114.3	39.7	60.5	155.6	19	1406.2	2.2	1270	335.8	207.8	21.4	4.5	463.9	19.7	642	<1	18975	0.82	0.09	22.74%	3.20
DD003B	DD003B-227	202	203	3062.7	111.9	38.8	62.5	157.8	18.4	1468.6	2.3	1354.9	355.5	217.5	20.9	4.2	442.5	20.3	1013	3	19634	0.86	0.14	23.15%	3.31
DD003B	DD003B-228	203	204	3255.2	117.3	40	64.5	166.5	19.2	1557.9	2.4	1416.9	374.7	227.7	22.5	4.5	464	21	655	1	19225	0.91	0.09	22.95%	3.24
DD003B	DD003B-229	204	205	3195.4	99.7	31.5	67.1	165.3	15.6	1536.4	1.7	1426.4	373	239.2	20.2	3.4	366	15	3887	1	19414	0.89	0.56	23.68%	3.27
DD003B	DD003B-231	205	206	3523.8	84.8	26.2	62.9	146	13.1	1676.2	1.4	1509.4	401.4	230.2	17.3	2.8	316.9	12.4	1549	<1	23709	0.94	0.22	23.69%	3.99
DD003B	DD003B-232	206	207	3426.4	62.5	20	52.3	121.2	9.7	1699	1.2	1432	389.6	202.9	13.5	2.1	235.1	10.4	936	<1	22716	0.90	0.13	23.62%	3.83
DD003B	DD003B-233	207	208	3423.8	56.6	17.9	50.3	113.6	8.8	1670.6	1	1372	383.6	195.3	12.5	1.9	211.6	9	4165	1	23584	0.88	0.60	23.22%	3.97
DD003B	DD003B-234	208	209	3489.4	62.9	20.2	53.7	122.9	9.6	1691.3	1.1	1416.6	388.4	202.3	13.5	2.2	231.9	9.7	991	<1	29261	0.90	0.14	23.29%	4.93
DD003B	DD003B-235	209	210	3825.8	70.5	22.2	62.2	140.9	11	1877.6	1.2	1582.5	432.8	238.4	15.5	2.2	265.4	10.4	1227	2	23016	1.00	0.18	23.45%	3.88
DD003B	DD003B-236	210	211	3649.4	65.7	19.6	58.1	131.8	9.9	1821.2	1.1	1525.6	418.1	225.3	14.5	2.1	234.3	9.6	832	2	23963	0.96	0.12	23.64%	4.04
DD003B	DD003B-237	211	212	3624.9	60.4	19.1	55.5	122	9.4	1798.5	1.1	1468.6	408.9	214.8	13.3	2.1	226.6	9.9	4955	<1	21789	0.94	0.71	23.27%	3.67
DD003B	DD003B-238	212	213	3423.3	55.3	17.9	52.4	112.5	8.3	1689.3	1.1	1399.1	387.4	197.2	12	2	202.8	9.4	4128	<1	19833	0.89	0.59	23.50%	3.34
DD003B	DD003B-240	213	214	3862.6	62.4	16.6	54.3	115.8	7.8	1917.3	1.1	1542.9	428	218.3	12.2	2	190.1	9.3	5551	1	26647	0.99	0.79	23.29%	4.19
DD003B	DD003B-241	214	215	3478.9	50.7	20	50.9	117.1	9.5	1743.8	1.2	1427.3	390.6	198.6	13.2	2.2	228.7	10.9	733	2	24672	0.91	0.10	23.34%	4.46
DD003B	DD003B-242	215	216	3754	81.2	27.1	60.6	140	13	1863.7	1.5	1544.1	421.6	225.6	16.6	3	308.4	13	129	6	25021	0.99	0.02	23.07%	4.22
DD003B	DD003B-243	216	217	3504.1	78.9	26.7	58.3	135.2	12.7	1765.1	1.4	1494.4	399.2	218.3	16.3	3	302.7	12.3	877	4	21090	0.94	0.13	22.98%	3.55
DD003B	DD003B-244	217	218	3554.2	81.2	28.4	57.8	134.3	13.4	1765.5	1.6	1473	401.7	215.4	15.9	3.3	313.7	14	3409	27	21619	0.95	0.4		

For personal use only

Hole_ID	Sample No	Depth_From (m)	Depth_To (m)	Ce ppm	Dy ppm	Er ppm	Eu ppm	Gd ppm	Ho ppm	La ppm	Lu ppm	Nd ppm	Pr ppm	Sm ppm	Tb ppm	Tm ppm	Y ppm	Yb ppm	Nb ppm	Mo ppm	Sr ppm	TREO %	Nb2O5 %	NdPr %	SrCO3 %
DD003B	DD003B-291	259	260	366.6	6	2.5	5.3	11.6	1	196.3	0.2	139.9	39.4	19.5	1.2	0	26.3	2.1	362	3	4609	0.10	0.05	21.82%	0.78
DD003B	DD003B-293	260	261	1372.1	8	2.8	12.4	22.5	1.3	584	0.2	527.2	150.7	56.6	2	0	30	1.9	634	4	7994	0.32	0.09	24.38%	1.35
DD003B	DD003B-294	261	262	420.4	7	2.6	5.7	13.5	1.2	224.9	0.2	156.7	46.6	23.1	1.5	0	29.1	2.1	518	7	4764	0.11	0.07	21.65%	0.80
DD003B	DD003B-295	262	263	314.9	6.4	2.2	5.1	11.9	1	163.8	0.2	120.2	34.6	17.4	1.3	0	26.2	1.7	199	2	3374	0.08	0.03	21.79%	0.57
DD003B	DD003B-296	263	264	324	10.2	4.6	5.5	13.9	1.9	172.8	0.4	125.1	34.7	18.8	1.8	0.6	49.6	3.6	247	3	3711	0.09	0.04	20.67%	0.63
DD003B	DD003B-297	264	265	986	9.1	3.6	9.8	20.6	1.5	421.6	0.3	375.8	106.6	44.1	1.9	0	39.6	2.5	283	3	8632	0.24	0.04	23.76%	1.45
DD003B	DD003B-298	265	266	341.3	7	2.8	4.7	11.2	1.3	185.8	0.3	123.6	36.2	17.8	1.3	0	31	2.4	273	8	4799	0.09	0.04	20.73%	0.81
DD003B	DD003B-299	266	267	368.9	7.4	2.9	5.6	12.5	1.2	199.5	0.3	136.9	39.8	21.6	1.5	0	30.8	2.3	610	4	4335	0.10	0.05	21.15%	0.73
DD003B	DD003B-300	267	268	806.4	11.1	3.8	11.5	24.4	1.7	407.8	0.3	316.9	87.7	44.4	2.6	0	44.6	2.5	310	17	8533	0.21	0.04	22.82%	1.44
DD003B	DD003B-301	268	269	994.8	34.2	12.2	19.4	50	5.5	450.4	0.8	432.5	111.9	72.8	6.2	1.4	140.7	7.2	626	28	6672	0.27	0.09	23.11%	1.12
DD003B	DD003B-302	269	270	256	8.7	3.8	5.1	12.1	1.5	132	0.4	110.2	29.4	18.4	1.5	0.5	41.6	3.3	511	6	4666	0.07	0.08	22.20%	0.79
DD003B	DD003B-303	270	271	749.5	13.8	9.4	6.6	15	3	463.7	0.8	236.4	75.7	28.6	2	1.3	85.3	7.4	396	4	5090	0.20	0.06	18.26%	0.86
DD003B	DD003B-304	271	272	224.7	11.6	6.1	4.6	11.1	2.5	118.2	0.5	88.9	24.5	14	1.7	0.8	63.5	4.4	374	2	4169	0.07	0.05	19.45%	0.70
DD003B	DD003B-305	272	273	293.3	9	3.6	4.6	11.2	1.6	166.6	0.3	102.1	30.2	15.2	1.6	0	38.8	2.6	429	4	4233	0.08	0.06	19.31%	0.71
DD003B	DD003B-307	273	274	279.6	12	5.4	5.4	14.2	2.1	156.7	0.5	101.9	29.1	17.9	2	0.8	57.4	4.5	363	4	2239	0.08	0.05	18.84%	0.38
DD003B	DD003B-308	274	275	201.7	12.2	5.1	5.6	15.3	2	104.7	0.5	81.3	22.8	16.9	2.1	0.8	53.3	4.5	453	2	5773	0.06	0.06	19.50%	0.97
DD003B	DD003B-309	275	276	303.2	13.6	6.8	6.8	17	2.7	157.7	0.7	125.5	33	22	1.4	1	68.5	5.8	618	10	6946	0.09	0.05	20.49%	1.17
DD003B	DD003B-311	276	277	1982.5	35.9	10.3	37.6	82.1	5.1	843.6	0.6	842.1	220	137.3	8.4	1	121	5.5	3779	8	11293	0.51	0.54	24.41%	1.90
DD003B	DD003B-312	277	278	2991.4	35.4	9	46.8	99.3	4.5	1412.9	0.5	1237.2	328	180.1	9	0.9	106.7	4.3	2457	4	20663	0.76	0.35	24.12%	3.48
DD003B	DD003B-313	278	279	2470.4	26.2	6.5	35.2	73.7	3.4	1170.4	0.4	958.8	268.8	138.7	6.6	0.7	78.8	3.2	9269	4	17553	0.61	1.33	23.31%	2.96
DD003B	DD003B-314	279	280	3207.6	36.4	8.5	49.4	108.2	4.6	1540.2	0.4	1320.3	356.8	196.5	9.4	0.8	102.4	3.8	2042	5	27071	0.81	0.29	24.07%	4.56
DD003B	DD003B-315	280	281	3056.2	86.9	27.8	56.4	143.5	13.4	1462.3	1.5	1290.9	343.5	206.4	17.2	3	334.8	13.4	3944	6	16508	0.83	0.56	23.03%	2.78
DD003B	DD003B-316	281	282	3154.4	69	22.9	52	123.9	10.5	1520.3	1.3	1303.6	352	197.2	13.8	2.5	255.4	11.2	2911	7	19222	0.83	0.42	23.24%	3.24
DD003B	DD003B-317	282	283	3060.9	49.1	16	48.2	102.1	7.6	1438.1	0.8	1263.1	340.5	181.5	10.9	1.7	183.1	7.4	1946	17	19079	0.79	0.28	23.79%	2.21
DD003B	DD003B-318	283	284	2875	51.4	14.9	47	106.2	7.1	1367.4	0.8	1170.2	315.6	173.6	11.2	1.6	176.7	7	1448	5	13864	0.74	0.21	23.39%	3.24
DD003B	DD003B-320	284	285	2829	64.5	22.1	49.9	114.6	10.5	1347.7	1.2	1157.9	310.9	181.9	12.7	2.4	263.8	10.9	4202	4	11746	0.75	0.60	22.90%	1.98
DD003B	DD003B-321	285	286	2917.4	53.9	18.4	49.1	107.5	8.7	1386.7	1	1224.2	324.5	184.5	11.5	2.1	212	9.1	1296	3	20930	0.76	0.19	23.68%	3.53
DD003B	DD003B-322	286	287	2456	55.4	17.1	43.3	99.5	8.4	1094.6	0.9	1007	268.8	156.8	11.3	1.8	209.2	8.1	4894	2	12712	0.64	0.70	23.36%	2.14
DD003B	DD003B-323	287	288	2366.5	52.8	14.6	43.3	100.1	7.7	1035.3	0.8	1002.1	267.7	156.7	11.3	1.5	183.2	7	7774	2	12774	0.62	1.11	24.07%	2.15
DD003B	DD003B-324	288	289	2451.7	58.2	17.5	42	98.7	8.9	1093.1	0.9	1027	273.1	155.1	11.6	1.7	215.8	7.8	3397	1	17135	0.64	0.48	23.68%	2.89
DD003B	DD003B-325	289	290	2265.9	49.4	14.8	36.9	86	7.6	1006.7	0.8	927.3	252.3	134.5	10	1.6	182	6.7	2087	<1	15181	0.58	0.30	23.56%	2.56
DD003B	DD003B-326	290	291	2592.1	83.9	23.5	44.9	113.2	12.5	1239.4	1.1	1079.4	292	160.3	16.1	2.3	296.2	9.3	2436	2	18914	0.70	0.35	22.85%	3.19
DD003B	DD003B-327	291	292	2482.6	34.6	9.1	36.6	80.8	4.8	1173.3	0.4	1054	287.1	140.3	8.1	0.9	108.4	3.9	1758	<1	19218	0.64	0.25	24.61%	3.24
DD003B	DD003B-328	292	293	2117.8	30.3	8.2	32.8	69.8	4.3	994.3	0.4	917.4	246.2	126.5	7	0.9	98.7	3.8	3049	3	16786	0.55	0.44	24.89%	2.83
DD003B	DD003B-329	293	294	1319	20.3	5.1	24.3	53.7	2.8	558.8	0.3	582.7	154.1	88.3	5.2	0.5	59.7	2.6	10349	1	8074	0.34	1.48	25.52%	1.36
DD003B	DD003B-330	294	295	2397.6	28.2	6.7	39.8	83.2	3.6	1119.9	0.4	1082	285.8	154.9	7.9	0.7	83.4	3.3	3296	<1	11768	0.62	0.47	25.74%	1.98
DD003B	DD003B-331	295	296	2558.8	55.1	14.7	46.2	106.8	8.1	1188.8	0.7	1137.2	302.3	168.6	12.1	1.5	187.2	6.2	2816	1	21465	0.68	0.40	24.75%	3.62
DD003B	DD003B-333	296	297	2575.3	51.7	15.3	43.6	102.7	7.7	1203.6	0.9	1108.9	300.8	161.1	11.3	1.6	187.3	7.6	4884	2	15725	0.68	0.70	24.28%	2.65
DD003B	DD003B-334	297	298	2767.5	86.1	30.3	52.7	130.8	14.3	1304.9	1.8	1205.6	324.2	180.7	16.7	3.4	343.4	16	4462	1	16209	0.76	0.64	23.50%	2.73
DD003B	DD003B-335	298	299	2272.3	29.9	6.6	38.8	83.9	3.8	1062.3	0.4	1011.1	267.1	145.9	8.1	0.7	85.9	3.3	75	7	18291	0.59	0.01	25.38%	3.08
DD003B	DD003B-336	299	300	1697.3	24.3	5.5	29.7	64.3	3.1	737.8	0.3	748.3	200.9	111.7	6.4	0.6	69.4	2.7	382	10	11974	0.43	0.05	23.55%	1.02
DD003B	DD003B-337	300	301	2421.1	68.4	24.7	45.4	108.5	11.7	1173	1.2	1074.8	292.9	161.6	13.5	2.6	275.2	10.3	277	29	22887	0.67	0.04	23.79%	3.86
DD003B	DD003B-338	301	302	2006	44.5	13.7	36.3	82.7	7	952.5	0.7	873.7	232	129.3	9.5	1.4	165.8	6.1	104	17	19126	0.53	0.01	24.13%	3.22
DD003B	DD003B-339	302	303	2223.8	56.7	18.7	40.4	94.9	9.4	1046.6	1	1001.2	261.6	150.3	11.2	2.1	221.6	8.7	147	20	16354	0.60	0.02	24.40%	2.76
DD003B	DD003B-340	303	304	2146.1	56	19	40.6	93.9	9.5	1012.8	0.9	971.4	255.2	146.1	11.4	2	225.2	8.3	66	29	17590	0.59	0.01	24.41%	2.96
DD003B	DD003B-342	304	305	2314.1	62.9	21.5	41.1	100.2	10.4	1120.9	1.1	1025.6	272.7	151.8	12.1	2.2	246.2	9.5	172	18	17786	0.63	0.02	23.95%	3.00
DD003B	DD003B-343	305	306	2464.2	39.3	10.9	40.6	88.2	5.7	1158.1	0.6	1054.9	286.2	153.4	9.1	1.2	133.4	5.3	42	27	17796	0.64	0.01	24.61%	3.00
DD003B	DD003B-344	306	307	2355	49	14.5	41.9	95.3	7.6	1117	0.7	1048.7	277.7	157.9	10.6	1.5	175.9	6.6	68	14	19435	0.63	0.01	24.54%	3.27
DD003B	DD003B-345	307	308	2353.9	54.2	16	41.8	97.5	8.4	1119.4	0.8	1021.4	274.1	152.8	11.4	1.7	191.7	7.4	40	14	19620	0.63	0.01	24.09%	3.31
DD003B	DD003B-347	308	309	2731.4	44.6	13.2	43.7	96.5	6.8	1343.6	0.7	1173.6	314.7	166.1	10.5	1.5	155.3	6.1	45	8	18919	0.72	0.01	24.27%	3.19

For personal use only

Hole_ID	Sample No	Depth_From (m)	Depth_To (m)	Ce ppm	Dy ppm	Er ppm	Eu ppm	Gd ppm	Ho ppm	La ppm	Lu ppm	Nd ppm	Pr ppm	Sm ppm	Tb ppm	Tm ppm	Y ppm	Yb ppm	Nb ppm	Mo ppm	Sr ppm	TREO %	Nb2O5 %	NdPr %	SrCO3 %
DD003B	DD003B-393	349	350	3567.9	22.5	7.4	27.5	56.4	3.3	2318.5	0.6	1027.9	339.9	110.1	5.5	1	76.6	5.7	662	35	12510	0.89	0.09	18.00%	2.11
DD003B	DD003B-394	350	351	8887.2	28.4	8.8	44.2	89.5	3.6	6643.5	0.9	2096.7	816.2	197.3	7.7	1.4	81.1	8.2	581	10	34315	2.22	0.08	15.35%	5.78
DD003B	DD003B-395	351	352	8802.7	26.3	8	44.3	87.1	3.4	6368.6	0.7	2077.2	812.2	191.6	7.8	1.2	78.1	6.5	575	7	32934	2.17	0.08	15.56%	5.55
DD003B	DD003B-396	352	353	7300	31.9	7.7	46	94.4	3.8	4853.4	0.5	1991.4	665.7	202	8.4	0.9	85.3	4.9	2415	13	30677	1.79	0.35	17.32%	5.17
DD003B	DD003B-397	353	354	7742.9	36.6	9.1	52	104.4	4.7	5021.6	0.5	2136.9	716.2	222.3	9.9	0.9	106.2	4.4	50	53	40693	1.89	0.01	17.59%	6.86
DD003B	DD003B-398	354	355	7272	37.8	8.7	55	112.1	4.6	4378.8	0.5	2169.7	753.6	231.8	10.3	0.8	102.9	4	247	30	41466	1.77	0.04	19.25%	6.99
DD003B	DD003B-400	355	356	5454.2	32.9	8.4	45.5	93.4	4.2	3287.8	0.6	1690	536.2	189.5	8.6	0.9	94.6	5	855	10	31635	1.34	0.12	19.38%	5.33
DD003B	DD003B-401	356	357	6852.7	32.3	9.1	44.6	94.6	4.2	4677.8	0.8	1823.7	621.1	189.4	8.7	1.2	99.5	7.3	1490	13	32882	1.69	0.21	16.84%	5.28
DD003B	DD003B-402	357	358	4369.4	43.7	12.7	41.3	91	6.4	2716.8	0.7	1348.7	425.5	164.1	9.6	1.5	147.6	6.6	1431	12	25381	1.10	0.20	18.83%	4.24
DD003B	DD003B-403	358	359	3506.7	63.4	20.9	46	110.8	10.1	1849.1	1.2	1305.9	377	176.3	13	2.4	238.3	10.4	1635	30	29956	0.91	0.23	21.67%	5.05
DD003B	DD003B-404	359	360	3462.2	53.4	18.4	40.2	93	8.5	1906.3	1	1213.5	362.2	152.6	10.7	2.1	205.9	9.3	2677	26	24381	0.88	0.38	20.81%	4.11
DD003B	DD003B-405	360	361	3520.1	44.7	14.2	37.8	85.3	7.1	1947.7	0.8	1187.9	362.5	146.8	9.3	1.6	168.7	7.1	2883	38	29162	0.88	0.41	20.47%	4.91
DD003B	DD003B-406	361	362	2901.1	40.2	11.8	35.2	78.6	6	1615	0.6	1006	302.6	132	8.7	1.3	141.3	5.5	2900	36	25484	0.74	0.41	20.73%	4.29
DD003B	DD003B-407	362	363	4266.9	40	11.8	46.6	98.3	5.9	2325.6	0.6	1489.2	448.8	184.1	9.9	1.3	140.1	5.7	2141	58	22794	1.06	0.31	21.28%	3.84
DD003B	DD003B-408	363	364	3999.3	30.9	8	40.9	85.5	4.2	2225.5	0.4	1345	413.7	166.6	8.2	0.9	98.9	3.9	1492	57	24752	0.99	0.21	20.79%	4.17
DD003B	DD003B-409	364	365	4275	53.4	16.6	48.4	107.6	8.5	2348.1	0.9	1523.2	452	190.4	11.5	1.8	194.1	8.2	874	61	31625	1.08	0.13	21.29%	5.33
DD003B	DD003B-410	365	366	3724.4	27.5	6.9	36.3	76.8	3.7	2037.1	0.3	1276.1	389	150.9	7.2	0.7	84.3	2.9	3229	54	24422	0.92	0.46	21.21%	3.11
DD003B	DD003B-411	366	367	3518.3	29.6	8.7	34	73.5	4.5	1945.1	0.5	1174.8	363.1	138.1	7.2	0.9	102.3	4.6	3655	50	20846	0.87	0.52	20.69%	3.51
DD003B	DD003B-413	367	368	3352	31.8	9.1	35.3	76.2	4.6	1882.2	0.5	1098.3	337.9	137.7	7.5	0.9	106.4	4.2	3318	108	24371	0.83	0.47	20.20%	4.11
DD003B	DD003B-414	368	369	3258.8	99.8	34.1	57.2	145.6	16.2	1672.8	2.2	1259.3	360.4	195.9	18.7	4.3	395.5	19.8	1441	4	24041	0.89	0.21	21.35%	4.05
DD003B	DD003B-415	369	370	3008.5	64.7	21.7	42.3	101.6	10.4	1594.7	1.4	1128.3	329.3	153.6	12.6	2.6	253.9	12.4	1036	3	26895	0.79	0.15	21.52%	4.53
DD003B	DD003B-416	370	371	3532	88.7	31.6	54.5	133.7	14.7	1877.9	2	1322.6	379.5	190.6	17.5	3.8	353.7	17.9	706	3	30296	0.94	0.10	21.10%	5.10
DD003B	DD003B-417	371	372	4005.2	86.7	31.9	51.3	127.1	14.6	2187.7	2	1419.7	424	190.3	16	4	358.2	17.7	1793	7	30646	1.05	0.26	20.52%	5.16
DD003B	DD003B-418	372	373	3420.8	53.4	18.9	43.1	96.8	9	1834.1	1.1	1225.8	364	160.3	11	2.2	214.2	9.5	2691	10	22578	0.88	0.39	21.20%	3.80
DD003B	DD003B-419	373	374	3360	30	9	36	76.1	4.7	1826.5	0.4	1167.5	350.2	145.4	7	0.9	108.6	3.8	1205	7	23783	0.83	0.17	21.22%	4.01
DD003B	DD003B-420	374	375	2752.1	29.3	9.6	29.8	62.6	4.8	1445.0	0.5	961.4	290.2	118.1	6.1	1.1	113.3	4.9	2444	20	19167	0.68	0.35	21.37%	3.23
DD003B	DD003B-422	375	376	3455.9	46.2	16.1	33.3	78.1	7.7	1959.8	0.9	1145.8	353.4	131.3	8.9	1.9	183.5	8.4	954	44	18755	0.87	0.14	20.10%	3.16
DD003B	DD003B-423	376	377	2728.2	163.9	49.4	47.6	142	26.6	1398.8	1.9	1036.5	296.7	155.1	26.3	5	590.2	17.3	1384	58	26514	1.79	0.20	19.76%	4.47
DD003B	DD003B-424	377	378	3764.3	108.1	60.4	43.5	114.5	22.1	2395.4	4.4	1180.7	365.6	153.3	17	8.4	552.3	38.8	1663	123	20043	1.04	0.20	17.39%	3.38
DD003B	DD003B-425	378	379	2954	103.5	55.2	45.2	117.5	20.9	1526.3	4	1112.9	320.2	161.9	16.4	7.7	508.2	35.3	1937	26	23989	0.82	0.28	20.34%	4.04
DD003B	DD003B-427	379	380	2999.3	90.1	38.7	46.9	121.7	16.3	1695.7	2.8	1095.2	317.1	161.5	15.6	5.1	392.3	24.5	1616	28	25731	0.83	0.23	19.98%	3.74
DD003B	DD003B-428	380	381	2776.2	56.9	20.9	37.5	91.4	9.7	1513.6	1.3	1006.2	394.4	136.5	11.1	2.7	227.7	11.8	1762	45	22083	0.73	0.25	20.87%	3.32
DD003B	DD003B-429	381	382	3424.8	75.8	26	49.5	123.1	12.2	1859.4	1.7	1244.8	363.3	175.1	15.2	3.1	294.8	15.3	696	41	21650	0.90	0.20	21.82%	3.65
DD003B	DD003B-431	382	383	2856.4	85.5	29.7	52.4	133.4	13.8	1505	1.9	1127.7	315.8	177.6	16.4	3.8	331	17	1382	2	25360	0.78	0.10	21.52%	4.27
DD003B	DD003B-432	383	384	3293.6	108.3	36.7	65	166.2	17.4	1698.4	2.3	1346.9	371.5	220.2	21.2	4.5	412.6	20.9	573	2	24855	0.91	0.08	21.94%	4.19
DD003B	DD003B-433	384	385	3186.2	114.6	39.2	67.9	175.3	18.8	1625.3	2.5	1322.2	362.4	222.6	22	4.7	435.8	22	1647	3	26122	0.90	0.24	21.96%	4.40
DD003B	DD003B-434	385	386	2432.2	82.3	29.7	44.8	116.7	13.7	1304.4	2	913.3	258.9	148.6	15.4	3.7	329.6	17.9	3842	24	18239	0.67	0.55	20.38%	3.07
DD003B	DD003B-435	386	387	1276.2	7.9	2.3	14.6	29.5	1	667.5	0.2	438.8	128.1	59.5	2.3	0	24.9	1.8	4842	27	8736	0.31	0.69	21.29%	1.47
DD003B	DD003B-436	387	388	1613.1	16.2	4.1	24.9	52	2.2	767.1	0.3	653.9	180.3	98.9	4.5	0.5	48.5	3	1468	10	11387	0.41	0.21	23.97%	1.92
DD003B	DD003B-437	388	389	87.3	3.5	1.3	1.9	4.4	0.7	43.4	0.2	36.4	9.9	5.8	0.7	0	16.4	1.6	215	7	1425	0.03	0.03	21.52%	0.24
DD003B	DD003B-438	389	390	1310.1	10.8	3.1	12.3	27.3	1.6	663.3	0.2	420.2	125.7	51	2.6	0	35.8	2.1	310	13	7156	0.31	0.04	20.24	1.21
DD003B	DD003B-440	390	391	462.9	7.7	2.5	5.9	15.2	1.2	274.1	0.2	162.4	47.4	23.5	1.7	0	29.9	2.2	485	19	3155	0.12	0.07	20.14	0.53
DD003B	DD003B-441	391	392	438.9	6.9	2.6	5.3	12.3	1.1	254.1	0.3	155.2	45.6	20.7	1.4	0	29.4	2.4	338	13	3153	0.11	0.05	20.47	0.53
DD003B	DD003B-442	392	393	5338.1	20.4	6.8	24.3	52.1	3	3731	0.4	1281.1	448.4	111.5	5	0.7	74	3.7	470	451	16982	1.30	0.63	0.1553	2.86
DD003B	DD003B-443	393	394	7475.7	33.4	8	50.5	107.1	4.3	5256.3	0.4	1906.9	633.7	214.2	9.3	0.8	99.3	3.3	1908	340	28730	1.85	0.26	0.1602	4.84
DD003B	DD003B-444	394	395	5387.4	34	8.7	46.3	98.5	4.4	3725.5	0.5	1459.6	469.9	182.6	9.2	0.9	101.8	4.7	2832	779	17703	1.35	0.42	0.1667	2.98
DD003B	DD003B-445	395	396	5768.6	37.9	9	56.5	119.3	5	3773.8	0.5	1759	534.7	228.5	10.6	0.9	111.2	4.6	802	1081	18373	1.45	0.11	0.1841	3.10
DD003B	DD003B-446	396	397	1900.9	13.1	3.7	18.9	38.2	1.7	1136	0.3	620.1	182.4	80.2	3.5	0	42.4	2.3	1795	91	13953	0.47	0.26	0.1978	2.35
DD003B	DD003B-447	397	398	764.2	9.8	3.1	8.7	20.3	1.5	434.3	0.3	227.5	69.2	31.6	2.2	0	34.9	2.5	2016	11	10634	0.19	0.29	0.1835	1.79
DD003B	DD003B-448	398	399	1532.1	8.7	2.4	10.5	2																	

Section 1: Sampling Techniques and Data

(Criteria in this section apply to all succeeding sections)

Criteria	JORC Code explanation	Commentary
Sampling techniques	<p><i>Nature and quality of sampling (e.g. cut channels, random chips, or specific specialised industry standard measurement tools appropriate to the minerals under investigation, such as down hole gamma sondes, or handheld XRF instruments, etc). These examples should not be taken as limiting the broad meaning of sampling.</i></p> <p><i>Include reference to measures taken to ensure sample representivity and the appropriate calibration of any measurement tools or systems used.</i></p> <p><i>Aspects of the determination of mineralisation that are Material to the Public Report.</i></p> <p><i>In cases where 'industry standard' work has been done this would be relatively simple (e.g. 'reverse circulation drilling was used to obtain 1 m samples from which 3 kg was pulverised to produce a 30 g charge for fire assay'). In other cases, more explanation may be required, such as where there is coarse gold that has inherent sampling problems. Unusual commodities or mineralisation types (e.g.submarine nodules) may warrant disclosure of detailed information.</i></p>	<p>Diamond core was logged both for geological and mineralised structures as noted above with all 2025-2026 drilling geotechnically logged. The core was then cut in half using a diamond brick cutting saw on 1m intervals. Typically, the core was sampled to geological intervals as defined by the geologist within the even two metre sample intervals utilised. The right-hand side of the core was always submitted for analysis with the left side being stored in trays on site.</p> <p>Diamond core was logged both for geological and mineralised structures. The core was then cut in half using a diamond brick cutting saw on 1m intervals. Typically, the core was sampled to geological intervals as defined by the geologist within the even two metre sample intervals utilised. The right-hand side of the core was always submitted for analysis with the left side being stored in trays on site.</p> <p>All data is sourced from 2025 drilling which implemented industry and best practice QAQC program, to provide verification of the sample procedure, the sample preparation and the analytical precision and accuracy of the primary laboratory.</p> <p>Sampling and QAQC procedures were carried out to industry standards.</p> <p>Sample preparation was completed by independent international accredited laboratories. Following cutting or splitting, the samples were bagged by the independent lab in Namibia and then sent to the Jinning Lab in Western Australia (a NATA accredited Australian lab) for preparation and assaying.</p>
Drilling techniques	<p><i>Drill type (e.g. core, reverse circulation, open-hole hammer, rotary air blast, auger, Bangka, sonic, etc.) and details (e.g. core diameter, triple or standard tube, depth of diamond tails, face-sampling bit or other type, whether core is oriented and if so, by what method, etc.).</i></p>	<p>All drilling was completed by industry standard triple tube diamond drilling.</p>
Drill sample recovery	<p><i>Method of recording and assessing core and chip sample recoveries and results assessed.</i></p> <p><i>Measures taken to maximise sample recovery and ensure representative nature of the samples.</i></p> <p><i>Whether a relationship exists between sample recovery and grade and whether sample bias may have occurred due to preferential loss/gain of fine/coarse material.</i></p>	<p>All 2025-26 holes have recoveries above 95% in the majority of the mineralised areas.</p> <p>No relationship exists between sample recovery and grade</p>

Criteria	JORC Code explanation	Commentary
Logging	<p><i>Whether core and chip samples have been geologically and geotechnically logged to a level of detail to support appropriate Mineral Resource estimation, mining studies and metallurgical studies.</i></p> <p><i>Whether logging is qualitative or quantitative in nature. Core (or costean, channel, etc.) photography.</i></p> <p><i>The total length and percentage of the relevant intersections logged.</i></p>	<p>All drillholes are logged and stored at a Aldoro local facility. All core (100%) is logged in detail. Geology logging is qualitative.</p> <p>The digitised logs of the drill programme are appropriate to inform geological interpretation of the results.</p> <p>Photography and recovery measurements were carried out by assistants under a geologist's supervision.</p> <p>All drill holes were logged in full.</p> <p>Logging was qualitative and quantitative in nature.</p>
Subsampling techniques and sample preparation	<p><i>If core, whether cut or sawn and whether quarter, half or all core taken.</i></p> <p><i>If non-core, whether riffled, tube sampled, rotary split, etc and whether sampled wet or dry.</i></p> <p><i>For all sample types, the nature, quality, and appropriateness of the sample preparation technique.</i></p> <p><i>Quality control procedures adopted for all subsampling stages to maximise representivity of samples.</i></p> <p><i>Measures taken to ensure that the sampling is representative of the in-situ material collected, including for instance results for field duplicate/second-half sampling.</i></p> <p><i>Whether sample sizes are appropriate to the grain size of the material being sampled.</i></p>	<p>NTW core was cut in half using a core saw. Typically, the core was sampled to major geological intervals as defined by the geologist initially within the even 1m. All samples were collected from the same side of the core.</p> <p>Sampling of diamond core used industry standard techniques. After drying the sample is subject to a primary crush to 2mm. Sample is split through a riffle splitter until 250gm is left (this involves 4-5 splits through the riffle splitter).</p> <p>The 250-gm sample is milled through an LM5 using a single puck to 90% <75 micron.</p> <p>Milled sample is homogenised through a matt roll with a 150gm routine sample collected using a spoon around the quadrants and sent to MSA and Intertek for analysis.</p> <p>Field QC procedures involved the use of two types of certified reference materials (1 in 20) which is certified by Geostats Ltd,</p> <p>Primary DD duplicate: Generated by cutting the remaining half core into a ¼ and sampled.</p> <p>Coarse blank samples: Inserted 1 in every 20 samples</p> <p>Sample sizes are considered appropriate to cover the variation in textures from aphanitic to porphyritic to minimise any grainsize bias with larger NTW core used and the prep sample being sufficiently large to overcome textural bias.</p>
Quality of assay data and laboratory tests	<p><i>The nature, quality and appropriateness of the assaying and laboratory procedures used and whether the technique is considered partial or total.</i></p> <p><i>For geophysical tools, spectrometers, handheld XRF instruments, etc, the parameters used in determining</i></p>	<p>The NB Nambian Lab completed the sample preparation including crushing and pulverisation after drying at 80deg C. Subsequently these samples are sent to the Australian Lab (Jinning Testing and Inspection) for analysis.</p>

For personal use only

Criteria	JORC Code explanation	Commentary
	<p><i>the analysis including instrument make and model, reading times, calibrations factors applied and their derivation, etc.</i></p> <p><i>Nature of quality control procedures adopted (e.g. standards, blanks, duplicates, external laboratory checks) and whether acceptable levels of accuracy (i.e. lack of bias) and precision have been established.</i></p>	<p>Due to the refraction nature of REE's a Fusion technique was used for all analyses.</p> <p>The samples were fused in a furnace (~650°C.) with Sodium Peroxide in a nickel crucible. The melt is dissolved in dilute Hydrochloric acid and the solution analysed. This technique provides almost complete dissolution of most minerals including silicates with the elements finished by ICP_OES for majors and ICP-MS for trace elements.</p> <p>A definitive QAQC program was implemented to provide verification of the sample procedure, the sample preparation and the analytical precision and accuracy of the primary laboratory, which includes the following:</p> <p>Certified Reference Material (CRM) samples: 2 (two) types of standards sourced from OREAS Ltd. were inserted 1 in every 20 samples</p> <p>Coarse blank samples: Inserted 1 in every 20 samples to monitor cross contamination</p> <p>A blank sample and crusher and pulp duplicate sample were inserted for every hole. The laboratory also inserted QAQC samples, including laboratory standards and CRMs.</p> <p>Overall, 12.5% of the samples submitted to the primary assay lab were QAQC samples. The QAQC procedures undertaken show that returned results are within acceptable limits.</p> <p>Results are considered as acceptable by the Competent Person and the drill samples are considered to be suitable for reporting of exploration results.</p>
Verification of sampling and assaying	<p><i>The verification of significant intersections by either independent or alternative company personnel.</i></p> <p><i>The use of twinned holes.</i></p> <p><i>Documentation of primary data, data entry procedures, data verification, data storage (physical and electronic) protocols.</i></p> <p><i>Discuss any adjustment to assay data.</i></p>	<p>Geological logs are digitally entered into data entry templates in MS Excel.</p> <p>Assay certificates were received from the NATA approved analytical laboratories and imported into the drill database.</p> <p>No adjustments have been made to the data other than conversion to oxides using standard stoichiometry conversion factors.</p>
Location of data points	<p><i>Accuracy and quality of surveys used to locate drillholes (collar and downhole surveys), trenches, mine workings and other locations used in Mineral Resource estimation.</i></p> <p><i>Specification of the grid system used.</i></p>	<p>Diamond drilling collar data have been located with high precision survey tool. The resultant locations are appropriate for resource estimation.</p>

For personal use only

Criteria	JORC Code explanation	Commentary
	<i>Quality and adequacy of topographic control.</i>	Down-hole surveying of dip and azimuth (true) for diamond holes was conducted using an 'Axis' a reflex camera.
Data spacing and distribution	<p><i>Data spacing for reporting of Exploration Results.</i></p> <p><i>Whether the data spacing and distribution is sufficient to establish the degree of geological and grade continuity appropriate for the Mineral Resource and Ore Reserve estimation procedure(s) and classifications applied.</i></p> <p><i>Whether sample compositing has been applied.</i></p>	<p>Drill holes are done on a radial arc from multiple access points due to the steep high relief and not standard pattern drilling. This approach is considered sufficient for resources estimation especially with the increasing number of holes. Sampling down hole is consistent with conventional methodology with assay continuous down hole at regular 1m or less intervals.</p> <p>Sample compositing was not carried out.</p>
Orientation of data in relation to geological structure	<p><i>Whether the orientation of sampling achieves unbiased sampling of possible structures and the extent to which this is known, considering the deposit type.</i></p> <p><i>If the relationship between the drilling orientation and the orientation of key mineralised structures is considered to have introduced a sampling bias, this should be assessed and reported if material.</i></p>	<p>At this stage with a second phase of drilling increasing knowledge and understanding of the lithologies, their mineralisation style and distribution becoming is increasing understood in detail. The mineralisation is lithologically controlled over structural control governed by increasing high iron levels.</p> <p>The drilling crosscuts the mineralised beforite dykes and sovitic cores and is therefore not biased towards specific phases if the intrusion as evidenced in the assays which reveal the REE and Nb rich zones downhole.</p>
Sample security	<i>The measures taken to ensure sample security.</i>	<p>Half core was secured, covered and transported to the NB Namibia lab for core cutting facility securely bagged, A pulp fraction was sent to the Australian Lab for assay.</p> <p>All transport was overseen by either company staff, to the initial sample prep lab, and subsequently by independent personnel.</p>
Audits or reviews	<i>The results of any audits or reviews of sampling techniques and data.</i>	No audits or reviews of sampling techniques and data have been carried out.

Section 2: Reporting of Exploration Results

(Criteria listed in the preceding section also apply to this section)

Criteria	JORC Code explanation	Commentary
Mineral tenement and land tenure status	<i>Type, reference name/number, location and ownership including agreements or material issues with third parties such as joint ventures, partnerships, overriding royalties, native title interests, historical sites, wilderness or national park and environmental settings.</i>	The Competent Person is aware the Namibian Ministry of Mines and Energy approved the transfer of the Kameelburg Project's Exclusive Prospecting Licenses (EPL 7372, 7373 and 7895) from Logan Exploration & Investments CC to the Aldoro JV operating company Kameelburg Exploration Mining

For personal use only

Criteria	JORC Code explanation	Commentary
	<i>The security of the tenure held at the time of reporting along with any known impediments to obtaining a licence to operate in the area.</i>	(Pty) Ltd. The Competent Person is unaware of any impediments for ongoing exploration
Exploration done by other parties	<i>Acknowledgment and appraisal of exploration by other parties.</i>	Limited exploration work has been completed by previous owners, with all rock chips and soil sampling previously reporting publicly.
Geology	<i>Deposit type, geological setting and style of mineralisation.</i>	The mineralisation style being sought at carbonate hosted REE and Nb, associated with magnetite. The style of mineralisation is interpreted to be similar to the Niobec Sant Honore deposit in Canada. The Kameelburg Project is located in the northern Central Damara Orogenic Belt in Namibia and covers the Cretaceous Kameelburg Carbonatite plug and associated radial dykes intruding precursor syenites in the older host Neoproterozoic marbles and schists. The plug is approximately 1.4km in diameter and rises up to 275m above the surrounding peneplain. The intrusion consists of an initial pre-cursor phase of nepheline syenite/syenite followed by two sovitite and three beforosite phases with remanent rafts of volcanic breccia and syenite, the vestiges of earlier intrusive phases. The country rock consists of marbles, quartzite's, mica schists of the Damara Supergroup. Rare earth metals are known to occur in all five phases with higher concentrations in the more magnesium and iron rich beforosites.
Drillhole information	<i>A summary of all information material to the understanding of the exploration results including a tabulation of the following information for all Material drillholes: easting and northing of the drillhole collar elevation or RL (Reduced Level – elevation above sea level in metres) of the drillhole collar dip and azimuth of the hole downhole length and interception depth hole length. If the exclusion of this information is justified on the basis that the information is not Material and this exclusion does not detract from the understanding of the report, the Competent Person should clearly explain why this is the case.</i>	Provided in the main body of the release.
Data aggregation methods	<i>In reporting Exploration Results, weighting averaging techniques, maximum and/or minimum grade truncations (e.g. cutting of high grades) and cut-off grades are usually Material and should be stated. Where aggregate intercepts incorporate short lengths of high-grade results and longer lengths of low-grade results, the procedure used for such aggregation should be stated and some typical examples of such aggregations should be shown in detail.</i>	The exploration results are reported above using a 1% TREO cutoff grade and a 0.2% Nb ₂ O ₅ cutoff as noted in the main body of the release. No sample weighting was applied, nor high grade cuts. Only interval length weighting applied, down hole mineralisation is a weighted average using the cut- offs above to the data in Appendix 1, see bold highlights

Criteria	JORC Code explanation	Commentary
	<i>The assumptions used for any reporting of metal equivalent values should be clearly stated.</i>	
Relationship between mineralisation widths and intercept lengths	<p><i>These relationships are particularly important in the reporting of Exploration Results.</i></p> <p><i>If the geometry of the mineralisation with respect to the drillhole angle is known, its nature should be reported.</i></p> <p><i>If it is not known and only the downhole lengths are reported, there should be a clear statement to this effect (e.g. 'downhole length, true width not known').</i></p>	<p>No relationship has been established at present due to the early stage of exploration.</p> <p>With additional exploration this will be reviewed.</p> <p>All widths are downhole with the true widths not reported.</p>
Diagrams	<i>Appropriate maps and sections (with scales) and tabulations of intercepts should be included for any significant discovery being reported. These should include, but not be limited to a plan view of drillhole collar locations and appropriate sectional views.</i>	Maps and sections in body of text
Balanced reporting	<i>Where comprehensive reporting of all Exploration Results is not practicable, representative reporting of both low and high grades and/or widths should be practiced to avoid misleading reporting of Exploration Results.</i>	Only pertinent results are included given the scope of this announcement
Other substantive exploration data	<i>Other exploration data, if meaningful and material, should be reported including (but not limited to): geological observations; geophysical survey results; geochemical survey results; bulk samples – size and method of treatment; metallurgical test results; bulk density, groundwater, geotechnical and rock characteristics; potential deleterious or contaminating substances.</i>	No material information has been withheld for the project.
Further work	<p><i>The nature and scale of planned further work (e.g. tests for lateral extensions or depth extensions or large-scale step-out drilling).</i></p> <p><i>Diagrams clearly highlighting the areas of possible extensions, including the main geological interpretations and future drilling areas, provided this information is not commercially sensitive.</i></p>	<p>The continuation of drilling programme is planned as per the drill collar table presented in this report. The drilling programme is designed to contribute towards an undated MRE with increased confidence from the maiden report.</p> <p>Diagrams are provided in the main body of the release.</p>

For personal use only