

9 June 2026

Airborne Magnetic and Radiometric Survey Commences at Abbotts North Gold Project

HIGHLIGHTS

- Airborne Geophysical survey over the Abbotts North Gold Project has commenced
- Assay results from the recently completed maiden RC drilling program at the Rochefort Gold Prospect expected within weeks – survey simultaneously builds the next pipeline of targets across the project area
- The survey is substantially paid for via the geophysics cash grant from the WA Government under the Co-funded Geophysics Program (Venture 3, 2026–2027)
- The survey will provide high-resolution airborne magnetic and radiometric data over largely underexplored ground at the Company's Abbotts North Gold Project in the Murchison region, Western Australia
- Survey area covers new ground beyond the Rochefort Gold Prospect, where existing WA open-file magnetic data has supported drill targeting – into a largely unexplored and unsurveyed portion of the Abbotts Greenstone Belt, where no equivalent magnetic dataset currently exists
- Limited early-stage exploration at Abbotts North has already yielded the high-grade Rochefort Gold Prospect through rock chip and soil sampling alone, highlighting strong potential for additional discoveries across the belt
- High-resolution airborne magnetics will provide a critical new exploration dataset over ground that has seen very limited modern exploration
- Survey's southern extent is designed to identify the northward continuation of structures associated with New Murchison Gold's (ASX:NMG) Crown Prince deposit (2.2 Mt @ 3.9 g/t Au for 279 koz) and high-grade Lydia Prospect – both within the same Abbotts Greenstone Belt¹

PLC Resources Limited (ASX:PLC) ("PLC" or "the Company") is pleased to advise the commencement of a co-funded high-resolution airborne magnetic and radiometric geophysical survey at its Abbotts North Gold Project (Figure 1), located approximately 35 km north of Meekatharra in Western Australia's Murchison region. With assay results from the recently completed maiden RC drilling program at the Rochefort Gold Prospect expected within weeks, the survey positions PLC to advance on two fronts simultaneously – near-term drill results at Rochefort, and a new pipeline of targets across ground that has seen no equivalent modern exploration. The survey covers an underexplored portion of the Abbotts Greenstone Belt (Figure 2) and is co-funded up to \$35,888 under the Western Australian State Government Co-funded Geophysics

¹ New Murchison Gold Limited ASX Announcement "Crown Prince Mineral Resource Update" - 28 November 2024

Program (Venture 3, 2026–2027), administered by the Department of Mines, Petroleum and Exploration. The survey is being conducted by MagSpec Airborne Surveys and is expected to be completed in approximately five days, subject to weather and operational conditions.

Executive Director Simon Phillips commented:

“With assay results from our maiden Rochefort drill program expected within weeks and the airborne survey now underway, Abbotts North is advancing on two parallel tracks. We are about to find out what our first drill program has returned, while simultaneously building the target pipeline for what comes next. Securing government co-funding to fly this survey means we are expanding our exploration footprint across a largely untested portion of the Abbotts Greenstone Belt with minimal cost to shareholders. We are moving quickly, and we look forward to reporting results from both programs to the market in the near term.”

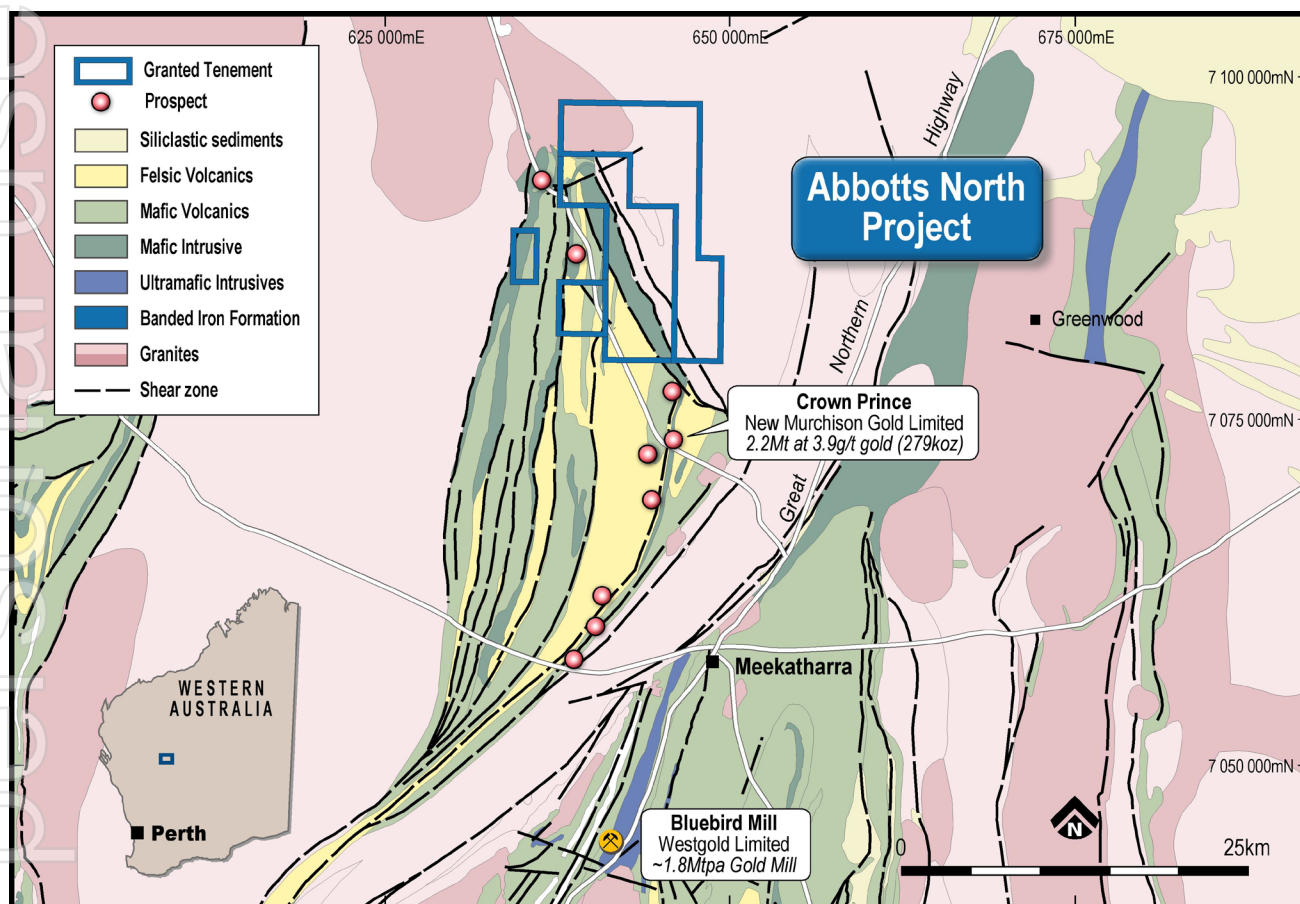


Figure 1: Abbotts North Gold Project location and regional geology

For personal use only

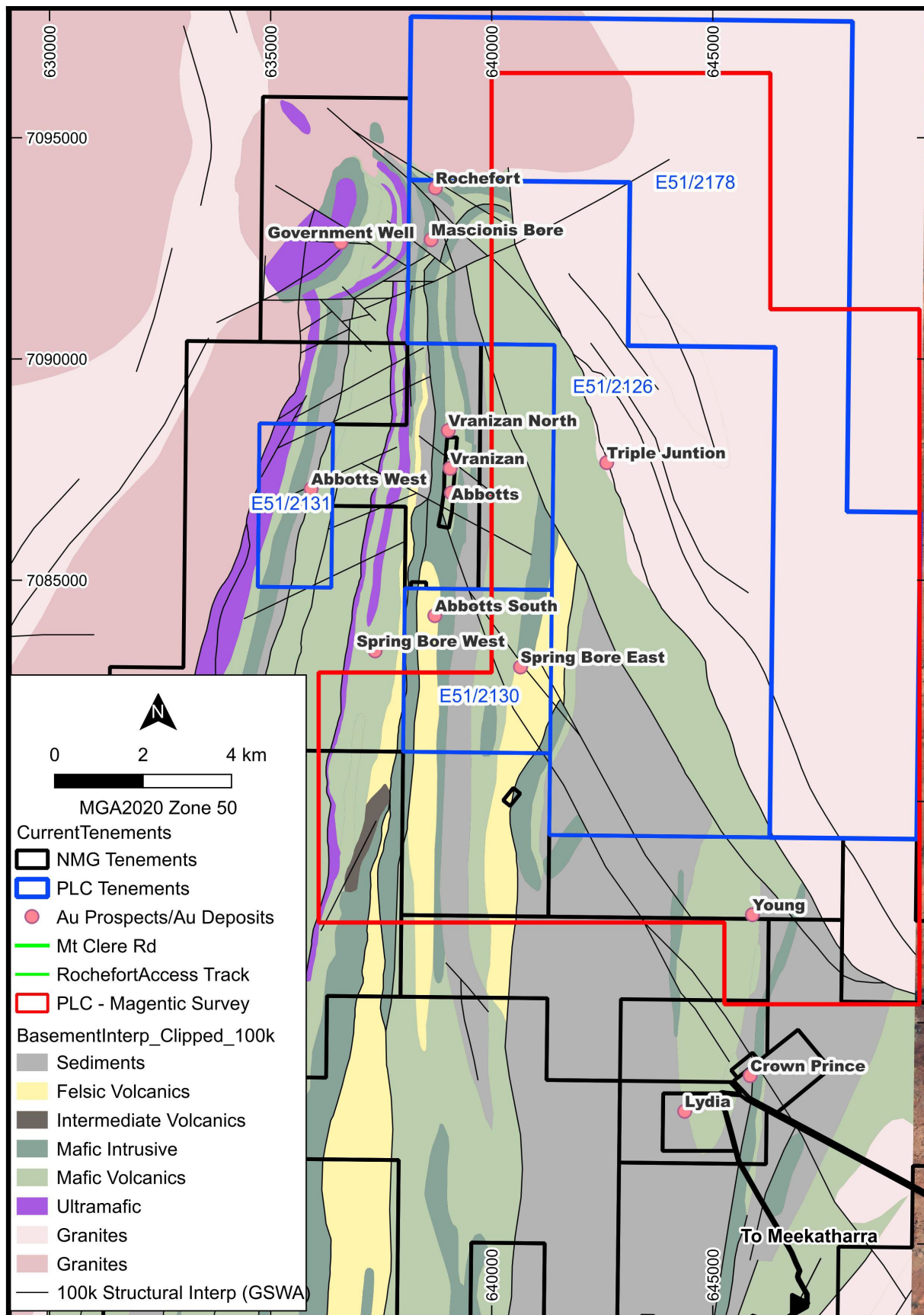


Figure 2: Co-funded airborne Magnetic survey area

Abbotts North Gold Project

The Abbotts North Gold Project sits within the Abbotts Greenstone Belt in Western Australia's Murchison region – a belt with a history of high-grade gold production and immediate proximity to the recently producing Crown Prince deposit. Despite these credentials, much of the Project area remains largely untested by modern exploration, presenting a compelling opportunity that PLC is now actively pursuing.

PLC's early-stage exploration – comprising geological mapping, rock chip sampling and soil sampling – has already demonstrated the belt's potential through the identification of the Rochefort Gold Prospect. Rock chip sampling returned high-grade results of up to 11.7 g/t Au from north-south trending quartz-hematite veins, and follow-up soil sampling defined a coherent ~400m × 350m gold-in-soil anomaly with peak values of up to 30 ppb Au. UltraFine™ surveying extended the anomaly beneath shallow cover (peak 42.9 ppb Au)², and a ground gravity survey completed in March 2026 confirmed a structurally favourable setting³. At Rochefort, existing high-resolution magnetic data available from WA open-file records was sufficient to support drill target refinement and led to the recently completed maiden RC program of 5 x holes (1,018 metres)⁴.

The Co-funded Geophysics Program survey will be flown over ground within the Project area where no equivalent magnetic dataset exists. This largely unexplored portion of the Abbotts Greenstone Belt has seen very little modern exploration, and the new high-resolution airborne magnetics survey will provide the foundational dataset needed to identify structural and lithological targets for follow-up ground activity. The Company considers the discovery of Rochefort through limited surface sampling to be a strong indicator of the prospectivity of the broader belt and anticipates the survey will unlock significant new exploration opportunities.

² PLC ASX Announcement "Abbotts North Sampling Results Highlight Further Potential" - 2 July 2025

³ PLC ASX Announcement "High-Resolution Gravity Survey Confirms Compelling Drill Targets at Rochefort Gold Prospect, Abbotts North Project" - 26 March 2026

⁴ PLC ASX Announcement "PLC Completes RC Drilling at Rochefort Gold Prospect" – 26 May 2026

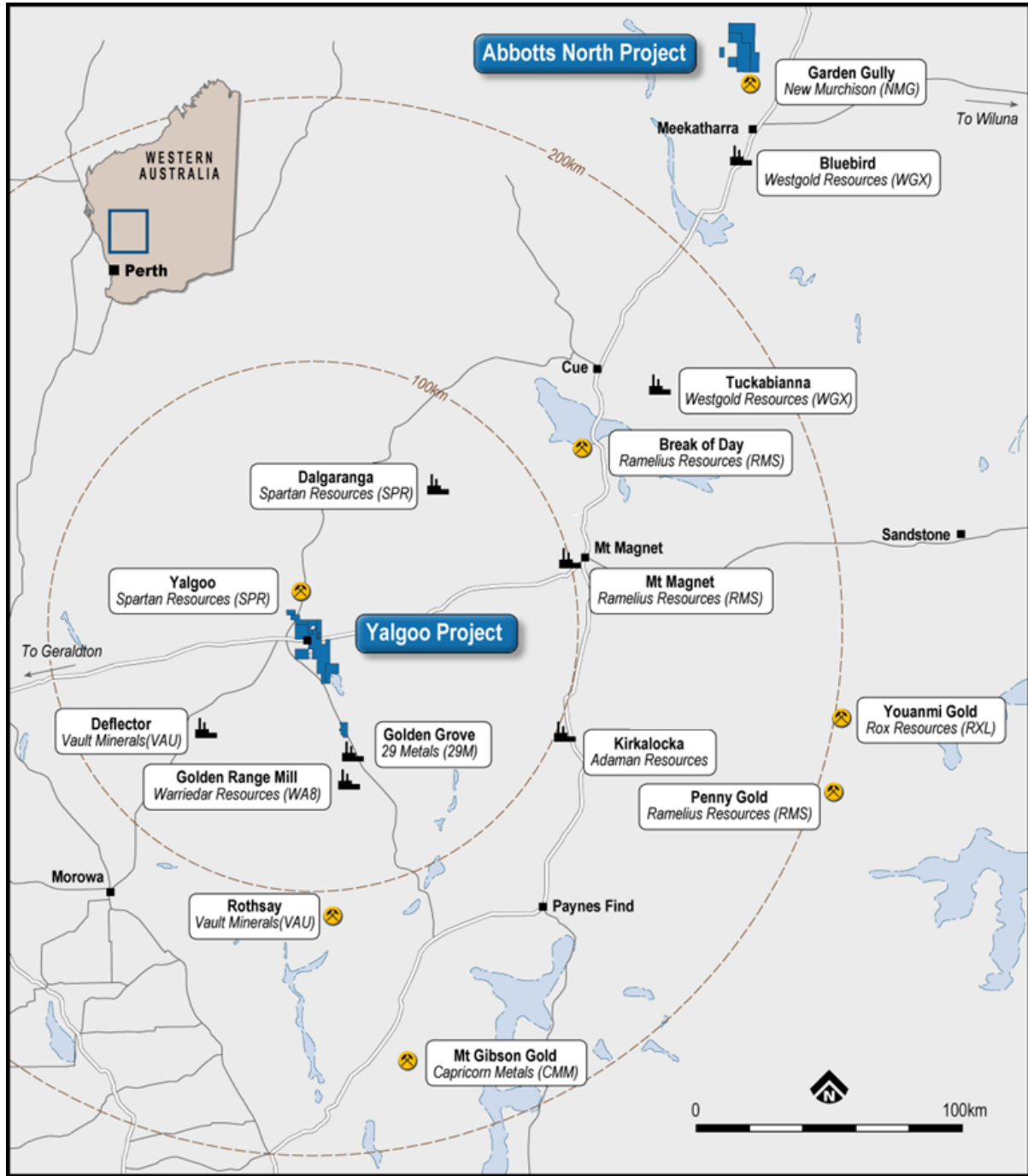


Figure 3: Regional context of the Abbotts North Gold Project within the Murchison goldfield

END

This release was approved by the Board of PLC Resources Ltd.

Enquiries

Simon Phillips

Executive Director

enquiries@plcresources.au

About PLC Resources

PLC Resources Limited (ASX: PLC) is a Western Australian mineral exploration company dedicated to discovering and advancing high-value gold and copper assets in world-class geological settings. Formerly known as Premier1 Lithium Limited, the Company has refocused its exploration strategy on its two flagship projects: the Yalgoo Gold Project, covering over 220 km² in the highly prospective Yalgoo-Singleton Greenstone Belt, a district hosting base and precious metals mines including Golden Grove and Deflector, and the Abbotts North Gold Project in the Murchison region of Western Australia, approximately 35 kilometres north of Meekatharra. PLC Resources is guided by rigorous project evaluation, disciplined capital allocation, and a commitment to delivering value for shareholders through high-impact exploration.

COMPETENT PERSON'S STATEMENT

The information in this announcement that relates to Exploration Results is based on information compiled by Paul Smith, a Competent Person who is a Member of the Australian Institute of Geoscientists (AIG). Mr Smith is a former employee and Exploration Manager of PLC Resources Limited. Mr Smith has sufficient experience that is relevant to the style of mineralisation and type of deposit under consideration and to the activity being undertaken to qualify as a Competent Person as defined in the 2012 Edition of the Australasian Code for Reporting of Exploration Results, Mineral Resources and Ore Reserves. Mr Smith consents to the inclusion in this announcement of the matters based on his information in the form and context in which it appears.

PROXIMATE STATEMENT

Where this release contains references to mineral exploration results derived by other parties either nearby or proximate to the Abbotts North Project and includes references to topographical or geological similarities to that of the Abbotts North Project. It is important to note that such discoveries or geological similarities do not in any way guarantee that the Company will have similar exploration successes on the Abbotts North Project, if at all.