



Exploration Drill Campaign Begins at Norseman PGM Project

Highlights

- AC drill program focusing on Platinum Group Metals has commenced at the Norseman Project in Western Australia
- Priority targets include follow up to newly identified shallow sulphide intercepts at the Mission Sill prospect with¹;
 - 8m @ 0.42 g/t PGM 3E² from 24m including 2m @ 0.88 g/t 3E (NRC518)
 - 17m @ 0.36 g/t PGM 3E from 84m including 5m @ 0.61 g/t 3E (NRC519)
- Potential for large discoveries at the Mission Sill with over 10 kilometres of strike and multiple anomalous drilling intercepts³
- Galileo's Norseman Project has proven prospectivity for PGMs with the 2022 discovery of 17.5Mt Callisto resource⁴
- Aim of the drilling program is to drive new palladium and platinum discoveries to add to the current JORC resource of 1.27Moz PdEq⁴

Galileo Mining Ltd (ASX: GAL, “Galileo” or the “Company”) is pleased to announce a 5,000m aircore drilling program targeting Platinum Group Metals (PGMs) has commenced at the Company's 100% owned Norseman project in Western Australia.

Galileo Managing Director Brad Underwood commented; *“We are excited to announce the next phase of campaign drilling has commenced at our Norseman project with follow up drilling targeting areas of sulphide mineralisation identified at the Mission Sill prospect. The sulphides intersected to date appear to be related to a geological feature that strikes for over 10km and we think the chances of new mineral discoveries at this location is significant.”*

¹ See ASX Announcement dated 19 March 2026

² PGM 3E = Pd + Pt + Au expressed in g/t

³ See ASX Announcements dated 19 March 2026 and 16 June 2025

⁴ See Table 1 and ASX Announcement dated 2 October 2023 for JORC resource details

We believe the potential for new resources within our Norseman tenure is high and that the ultimate endowment of this mineral belt could be far greater than our current 1.2Moz PdEq resource⁴.

We look forward to the results of the drilling as we aim to create value from our extensive 270 square kilometre tenement holding in a highly prospective and underexplored region.”

Fig 1: Commencement of AC drilling at the Norseman Platinum Group Metal (PGM) project.



Upcoming drilling at the Mission Sill prospect is designed to infill an area of interest surrounding previous shallow sulphide intercepts with anomalous levels of PGMs. This drilling is further supported by geophysical results³ which show a strong IP anomaly adjacent to a prospective gravity trend. Figures 3 and 7 show the location of upcoming drilling at the Mission Sill prospect.

Anomalous PGM results from the recent diamond drill hole beneath the Callisto resource support the potential for the discovery of additional mineralised sills within the Norseman project area⁷. Follow-up drilling is required along strike at Callisto North and Callisto South prospects to determine the metal content of sills at those locations (see Figure 7 for prospects). First pass aircore drilling at the southern end of the Callisto South prospect will be undertaken in the current drill campaign.

Approximately 5,000m of aircore drilling is planned for the present program and is scheduled to take three weeks to complete.

⁵ See ASX Announcement dated 13 May 2026

Figure 2 – Norseman Project residual gravity image with PGM prospective geological contacts, existing Callisto resource, and recent sulphide intercepts¹ at the Mission Sill prospect.

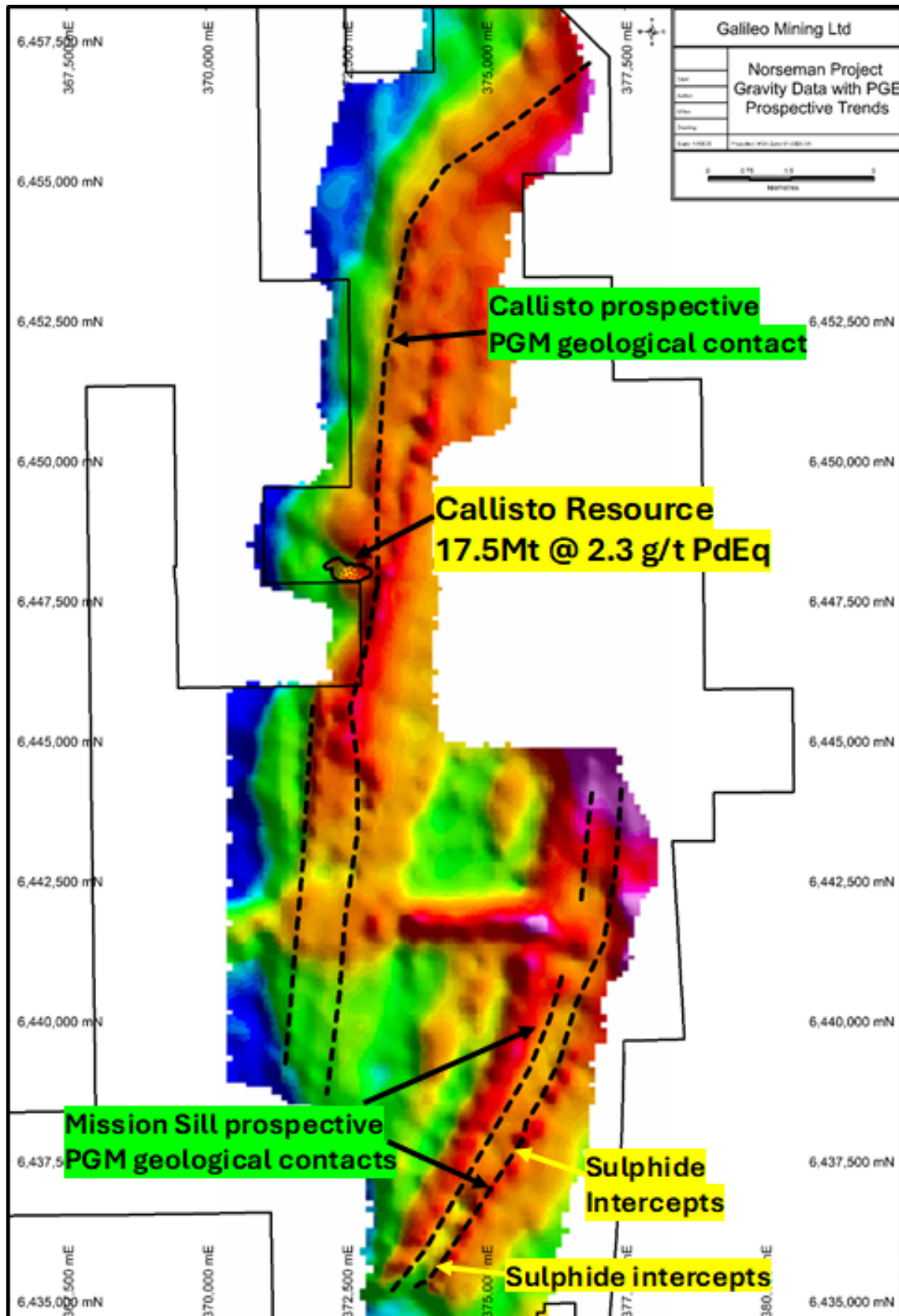


Figure 3 – Mission Sill Prospect sulphide intercepts, PGM target horizons (dashed lines), infill drilling targets (ellipses), with detailed 1VD gravity image (left) and TMI magnetic image (right).

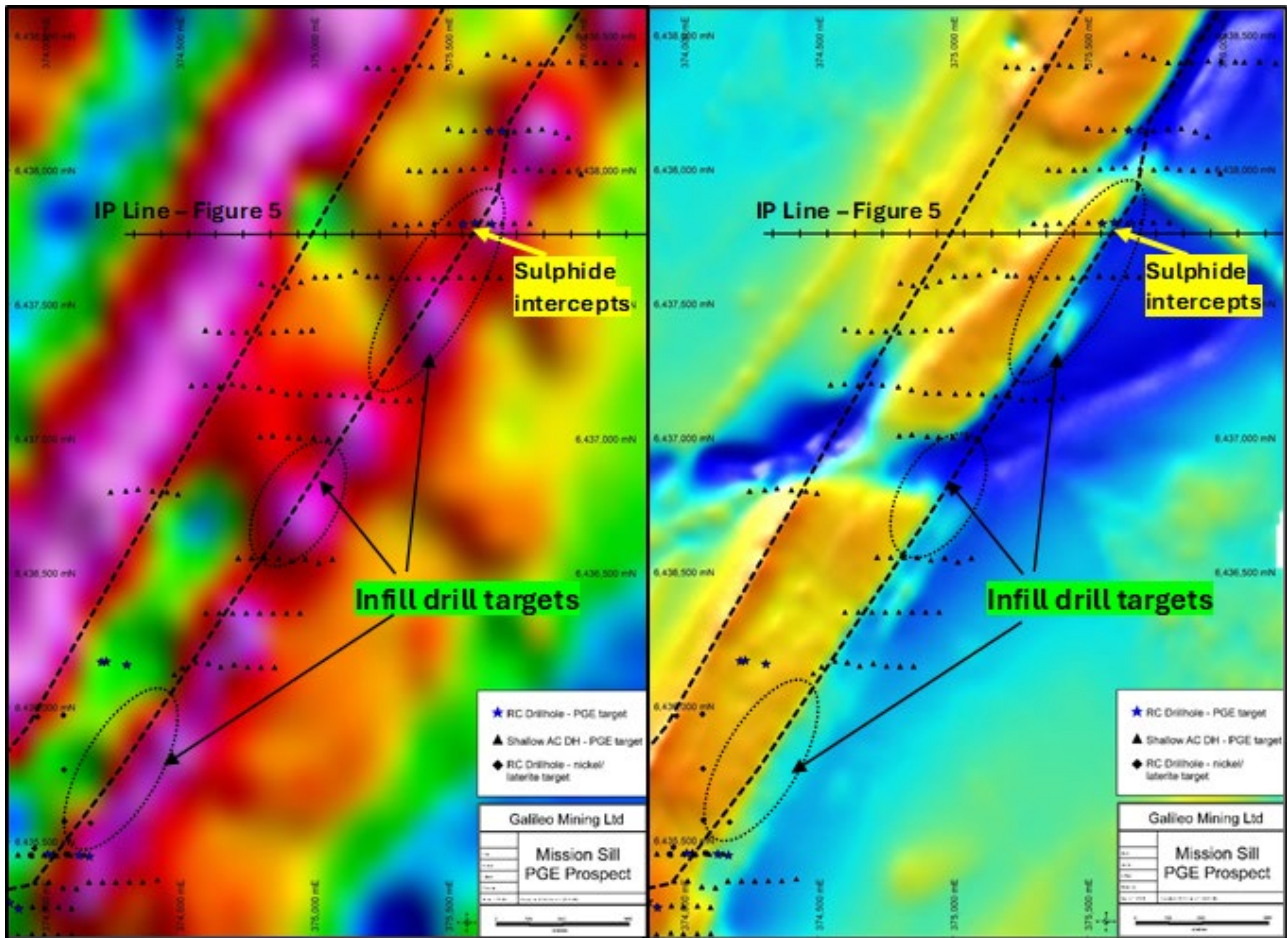


Figure 4 – Mission Sill section 6,437,800N with sulphide target zone.

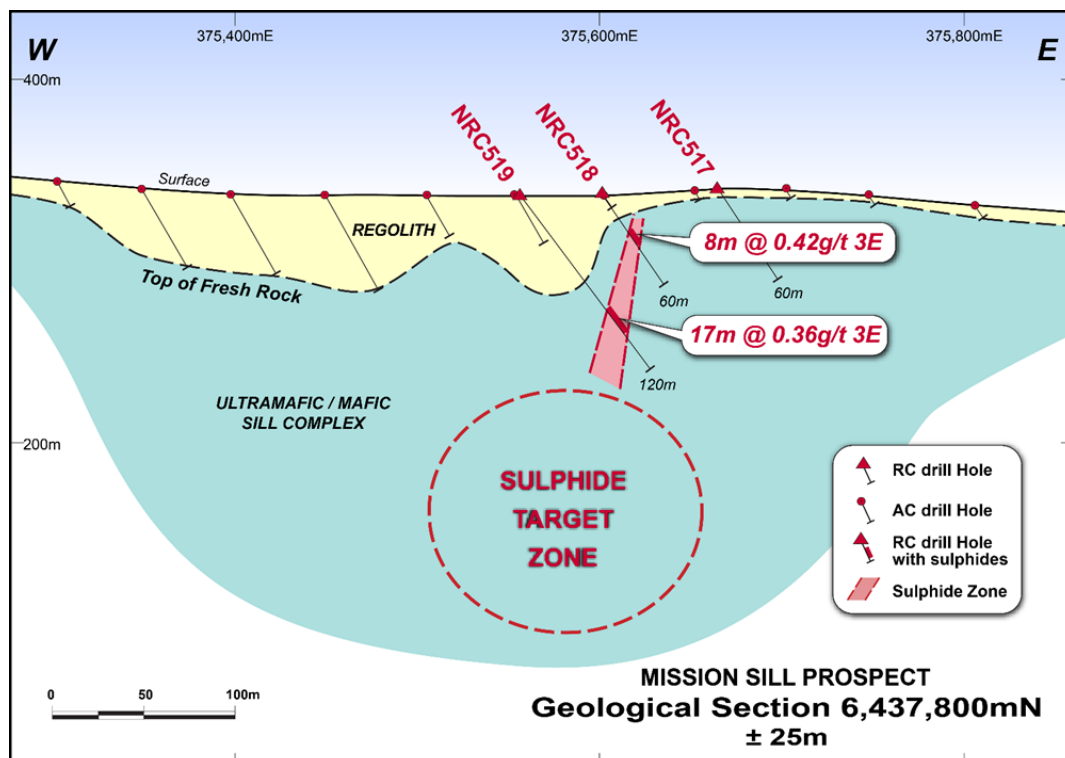


Figure 5 – Mission Sill IP line 6,437,760N resistivity (upper) and chargeability (lower) images with sulphide intercepts from 6,437,800 (Figure 4) and sulphide target zones

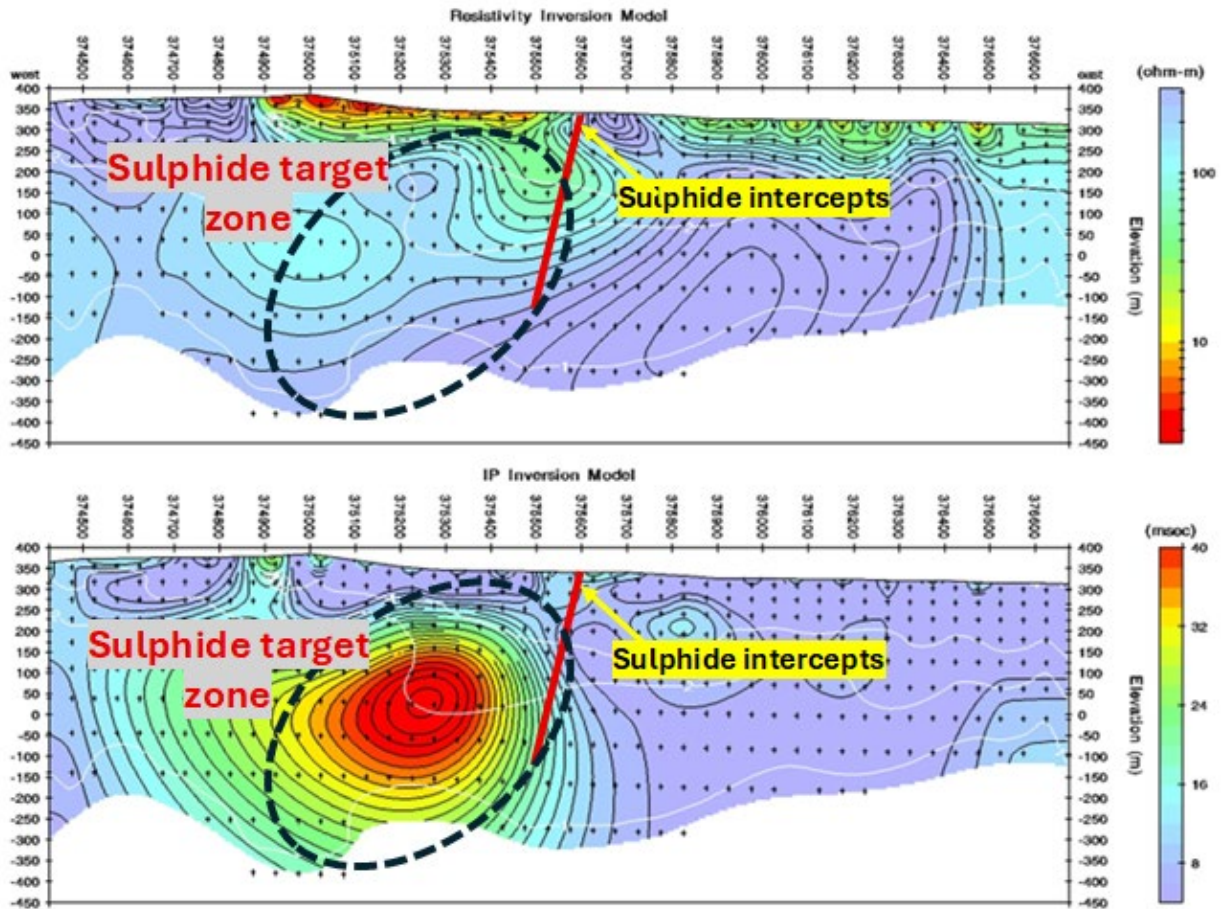


Figure 6 – Mission Sill section 6,435,450N showing aircore drilling, sulphide intercepts, and sulphide target zones. Drill hole NRC516 finished in mineralisation.

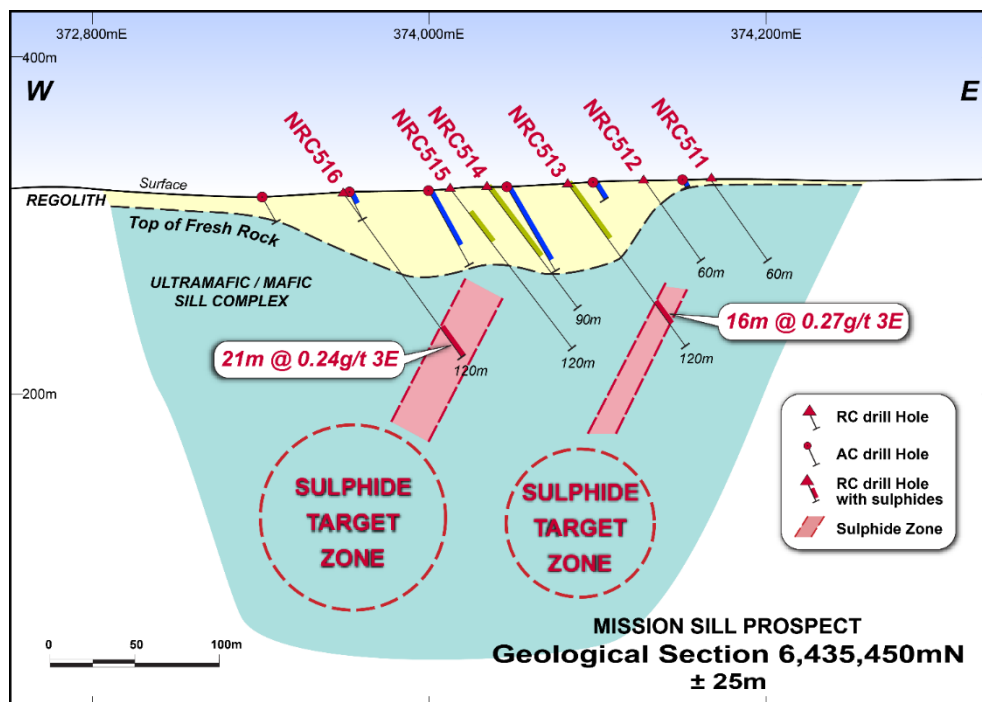


Figure 7 – Norseman Project outline (blue line) with PGE prospective area (black dashed line), Callisto Deposit (red star), and prospects (grey stars).

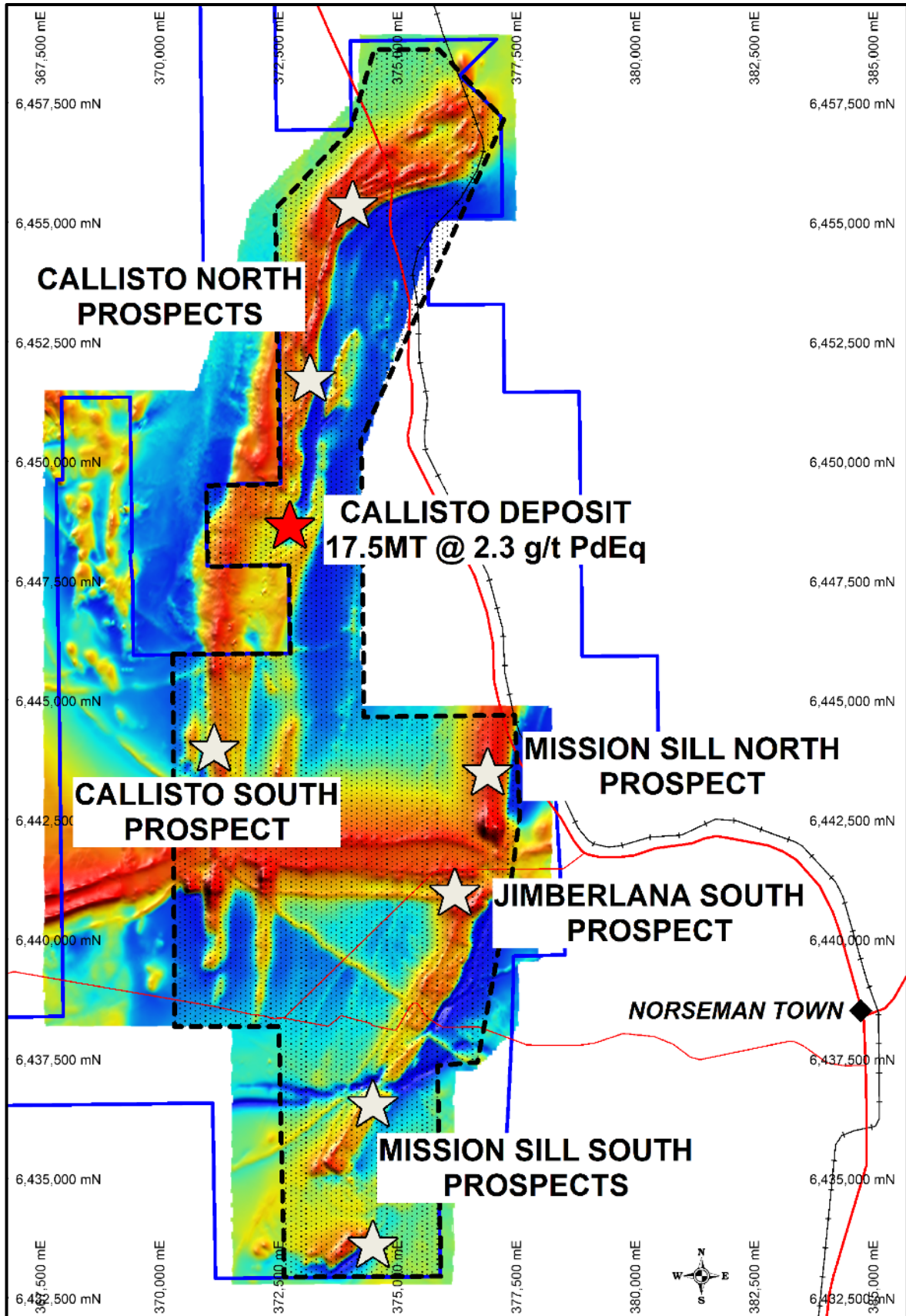


Figure 8 – Callisto deposit and prospective geological trends at Galileo’s Norseman project.

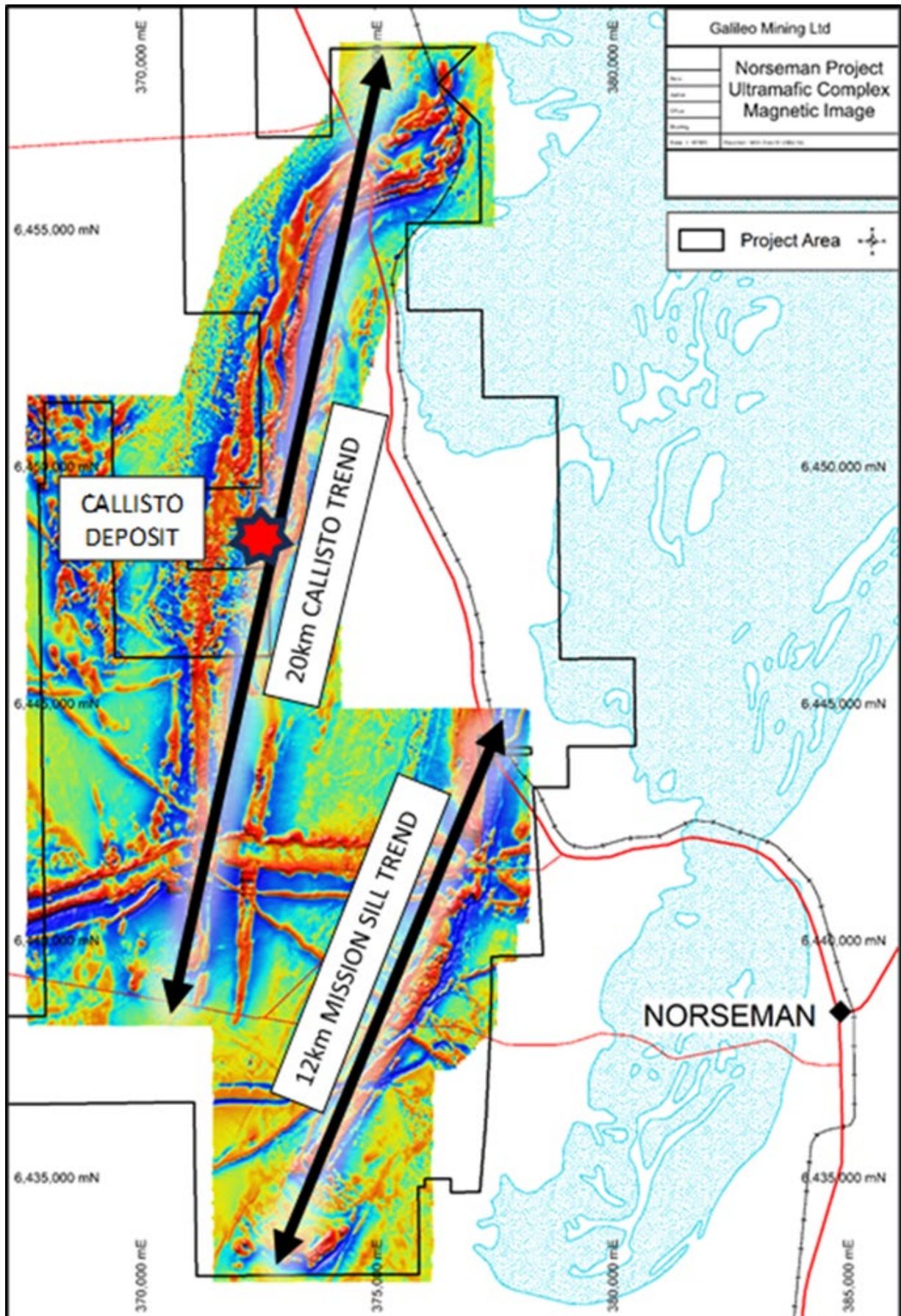
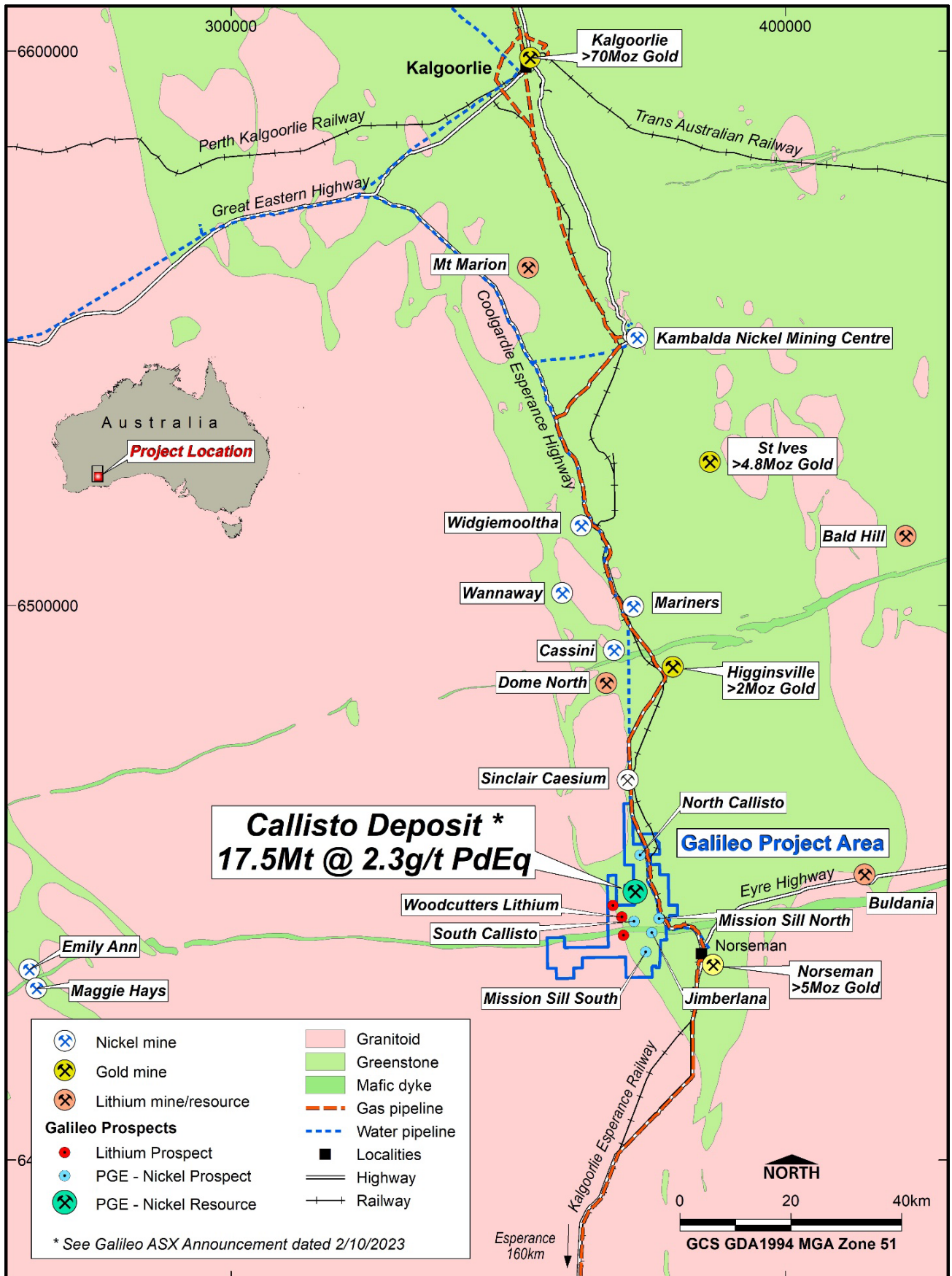


Figure 9 – Norseman project location map with a selection of mines, resources, and infrastructure in the region.



About Galileo Mining:

Galileo Mining Ltd (ASX: GAL) is focussed on the exploration and development of PGE (palladium-platinum), nickel, copper, and cobalt resources in Western Australia. GAL's tenements near Norseman are highly prospective for new discoveries as shown by the Callisto deposit. GAL also has Joint Ventures with the Creasy Group over tenements in the Fraser Range which are prospective for nickel-copper sulphide deposits similar to the operating Nova mine.

Norseman (100% GAL)

The wholly owned Norseman project contains the Callisto Discovery and adjacent regional prospects Jimberlana and Mission Sill with potential for palladium, platinum, nickel, copper, cobalt, and rhodium mineralisation. Galileo's tenure at Norseman comprises mining, exploration, and prospecting licenses covering a total area of 255 km².

The Callisto deposit was discovered in 2022 and is the first deposit of its type identified in Australia, analogous in mineralisation style to the Platreef deposits found in South Africa. An initial Mineral Resource Estimate was reported in 2023 with 17.5 Mt @ 1.04g/t 4E¹, 0.20% Ni, 0.16% Cu (2.3g/t PdEq² or 0.52% NiEq³).

Table 1 - Callisto Deposit Maiden Mineral Resource Estimate (JORC 2012) (see ASX announcement: 2 October 2023)

Reporting Criteria	JORC	Mass (Mt)	Grades									Metal accumulations								
			Pd (ppm)	Pt (ppm)	Au (ppm)	Rh (ppm)	Ni (%)	Cu (%)	PdEq (ppm)	NiEq (%)	4E (ppm)	Pd (Koz)	Pt (Koz)	Au (Koz)	Rh (Koz)	Ni (Kt)	Cu (Kt)	PdEq (Koz)	NiEq (Kt)	4E (Koz)
Above 60mRL and cut-off > 0.5g/t PdEq	Indicated	7.96	0.92	0.16	0.048	0.030	0.22	0.19	2.5	0.58	1.16	235.3	41.5	12.4	7.8	17.3	14.9	639	45.8	296.9
	Inferred	8.76	0.74	0.14	0.043	0.025	0.19	0.14	2.0	0.47	0.94	207.2	38.6	12.1	7.0	16.3	12.3	576	41.3	264.9
	Sub total	16.72	0.82	0.15	0.046	0.027	0.20	0.16	2.3	0.52	1.04	442.5	80.1	24.5	14.8	33.6	27.1	1,216	87.1	561.8
Below 60mRL and cut-off > 1.5g/t PdEq	Inferred	0.76	0.78	0.13	0.036	0.027	0.19	0.14	2.1	0.49	0.97	18.9	3.2	0.9	0.7	1.4	1.1	51	3.7	23.6
Total		17.48	0.82	0.15	0.045	0.027	0.20	0.16	2.3	0.52	1.04	461.4	83.3	25.3	15.4	35.0	28.2	1,267	91	585.4

Metal equivalent price assumptions of Callisto Resource released on 2nd October 2023

Based on metallurgical test work completed to date, the Company believes that Callisto's mineralisation is amenable to concentration using a conventional crushing, milling and flotation process and has Reasonable Prospects for Eventual Economic Extraction.

Metallurgical recovery assumptions used for metal equivalent value calculations were: Pd – 82%, Pt – 78%, Au – 79%, Rh – 63%, Ni – 77%, Cu – 94%

Metal price assumptions, based on 12 month calculated averages to 11th September 2023, were used for metal equivalent values: Pd – US\$1,600/oz, Pt – US\$975/oz, Au – US\$1,870/oz, Rh – US\$9,420/oz, Ni - US\$23,800/t, Cu – US\$8,420/t. Based on metallurgical test work completed to date, the Company believes that all metals included in the metal equivalent calculation have a reasonable potential to be recovered and sold.

Fraser Range (67% GAL / 33% Creasy Group JV)

Galileo is actively exploring for magmatic massive sulphide- nickel-copper deposits across its Fraser Range tenements covering over 600km² of highly prospective ground in the Albany-Fraser Orogen. The project is well positioned within the nickel-copper bearing Fraser Range Zone, with the Nova-Bollinger mine located between 30km and 90km from Galileo tenure.

¹4E = Palladium (Pd) + Platinum (Pt) + Gold (Au) + Rhodium (Rh) expressed in g/t

² PdEq (Palladium Equivalent) = Pd (g/t) + 0.580 x Pt (g/t) + 1.13 x Au (g/t) + 4.52 x Rh (g/t) + 4.34 x Ni (%) + 1.88 x Cu (%)

³ NiEq (Nickel equivalent) = Ni % + 0.230 x Pd (g/t) + 0.133 x Pt (g/t) + 0.259 x Au (g/t) + 1.04 x Rh (g/t) + 0.432 x Cu (%)

Competent Person Statement

The information in this report that relates to Exploration Results is based on, and fairly represents, information and supporting documentation prepared by Mr Brad Underwood, a Member of the Australasian Institute of Mining and Metallurgy, and a full time employee of Galileo Mining Ltd. Mr Underwood has sufficient experience that is relevant to the styles of mineralisation and types of deposit under consideration, and to the activity being undertaken, to qualify as a Competent Person as defined in the 2012 Edition of the “Australasian Code for Reporting of Exploration Results, Mineral Resources and Ore Reserves” (JORC Code). Mr Underwood consents to the inclusion in the report of the matters based on his information in the form and context in which it appears.

The information in this report that relates to Galileo’s Mineral Resource for the Callisto Deposit is from a previous report released to the ASX by Galileo Mining (2nd October 2023) based on information compiled by Paul Hetherington, a Competent Person who is a Member of the Australasian Institute of Mining and Metallurgy. Mr Hetherington has sufficient experience that is relevant to the styles of mineralisation and types of deposit under consideration, and to the activity being undertaken, to qualify as a Competent Person as defined in the 2012 Edition of the “Australasian Code for Reporting of Exploration Results, Mineral Resources and Ore Reserves” (JORC Code). Mr Hetherington consents to the inclusion in the report of the matters based on his information in the form and context in which it appears. Mr Hetherington has advised that this consent remains in place for subsequent releases by Galileo of the same information in the same form and context, until the consent is withdrawn or replaced by a subsequent report and accompanying consent.

With regard to the Company’s ASX Announcements referenced in the above Announcement, the Company is not aware of any new information or data that materially affects the information included in the Announcements.

Authorised for release by the Galileo Board of Directors.

Investor information: phone Galileo Mining on + 61 8 6285 5622 or email info@galmining.com.au

Media:

David Tasker

Chapter One Advisors

E: dtasker@chapteroneadvisors.com.au

T: +61 433 112 93