

ASX RELEASE

9 June 2026

Gum Creek Gold Project

Consistent High-Grade Intercepts returned from Swift, Eagle, Goldfinch and Shrike South RC Drilling

HIGHLIGHTS

- Significant intercepts returned from RC drilling outside of the current resource model at **Swift** included:
 - **6m @ 5.13g/t Au** from 95m including **2m @ 14.7g/t Au** from 98m
 - **5m @ 4.28g/t Au** from 146m including **2m @ 10.28g/t Au** from 146m
 - **3m @ 6.13g/t Au** from 123m including **1m @ 17.6g/t Au** from 123m
 - **9m @ 1.10g/t Au** from 152m
 - **8m @ 1.09g/t Au** from 145m
- Drilling at **Eagle** has extended the known gold mineralisation **~300m along strike** to the south. Significant intercepts returned from the RC drilling included:
 - **3m @ 6.62g/t Au** from 43m including **1m @ 16.35g/t Au** from 43m
 - **13m @ 1.50g/t Au** from 34m including **6m @ 2.77g/t Au** from 34m
 - **8m @ 2.36g/t Au** from 58m including **4m @ 4.47g/t Au** from 58m
 - **8m @ 1.13g/t Au** from 50m including **2m @ 3.09g/t Au** from 52m
 - **5m @ 1.90g/t Au** from 29m including **2m @ 4.04g/t Au** from 29m
- High-grade intercepts were returned from two additional RC holes drilled at **Goldfinch**, just two kilometres south of the old Gidgee Mill. The results will be included in the forthcoming maiden Mineral Resource Estimate ('MRE').
 - **4m @ 6.19g/t Au** from 75m to EOH
 - **3m @ 5.11g/t Au** from 73m
- A maiden MRE is also planned for **Shrike South** where recent RC drilling returned the following significant intercepts:
 - **11m @ 1.18g/t Au** from 72m including **5m @ 2.20g/t Au** from 73m
 - **7m @ 1.43g/t Au** from 82m including **3m @ 2.49g/t Au** from 82m
 - **7m @ 1.33g/t Au** from 65m
 - **7m @ 1.33g/t Au** from 68m
 - **5m @ 1.57g/t Au** from 30m
 - **2m @ 3.91g/t Au** from 55m

Horizon Gold Limited (ASX: HRN) ('Horizon' or 'the Company') is pleased to announce numerous significant gold intercepts returned from RC drilling at its 100% owned Gum Creek Gold Project ('Gum Creek' or 'the Project') located in the Mid-West Region of Western Australia. Final assay results for Reverse Circulation (RC) drilling completed at six prospects including Swift, Eagle, Goldfinch, Shrike South, Thornbill West and Vigilant have been received (Figure 1). Significant results are outlined below.

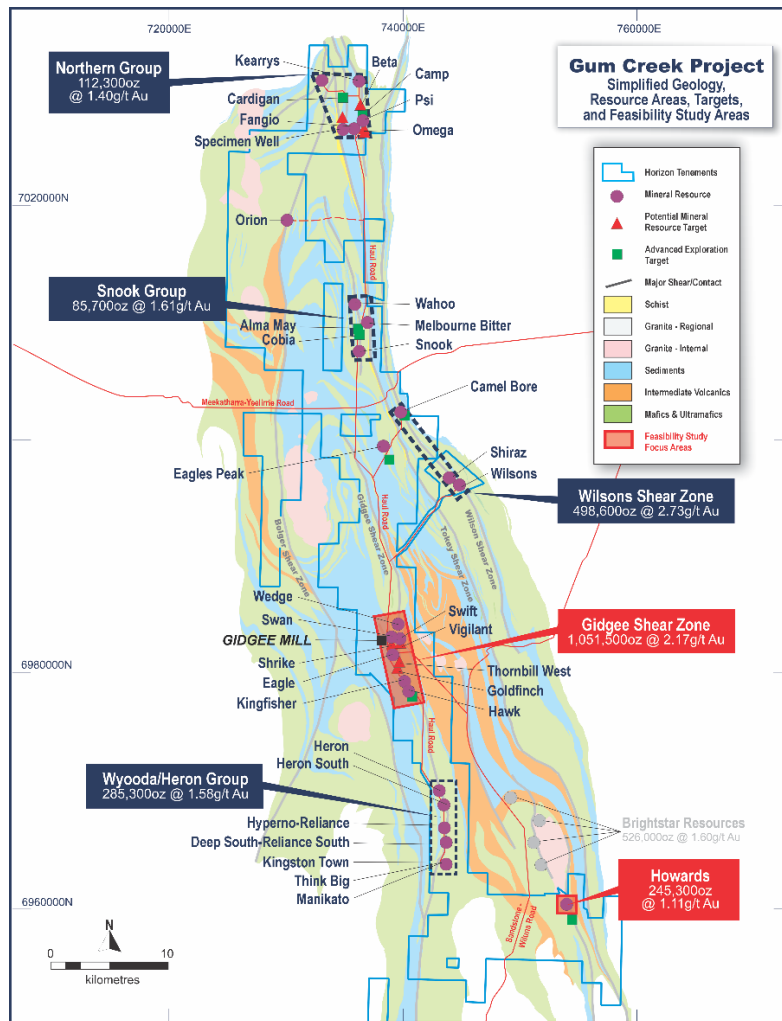


Figure 1: Gum Creek Gold Project existing Mineral Resources, Potential Mineral Resources and Exploration Targets over simplified geology.

Managing Director Scott Williamson said:

“These impressive high-grade RC drilling results from Swift, Eagle, Shrike South and Goldfinch continue to unlock our free-milling open pit mining strategy. We’re consistently adding shallow, high-grade resource ounces less than two kilometres from the proposed 2.4Mtpa processing plant while simultaneously drilling deeper to unlock the underground potential throughout the Gum Creek Greenstone Belt.

Eagle, Shrike South and Goldfinch have all delivered consistent high grades, with resource estimation underway to define material expansions to the Eagle MRE and maiden MREs for Shrike South and Goldfinch. Importantly, these resource additions sit outside the current Feasibility Study, positioning us for a meaningful uplift to project economics over the coming months.

The Feasibility Study remains on track for mid-year completion, with further results expected in the coming weeks as resource expansion drilling continues.”

Swift Prospect

The Swift Prospect is located 1.2km east of the historic Gidgee mill (Figure 1). The current Swan/Swift open cut MRE is 7.00Mt @ 1.85g/t Au for 415,600oz, and the Swift underground MRE is 0.85Mt @ 2.52g/t Au for 68,800oz (Table A).

The Company completed twelve RC holes at Swift for a total of 1,974m including three 120m deep pre-collars for diamond drilling (Figure 2). The program aimed to test for down dip and up-dip extensions to high-grade mineralisation outside of the current Swift resource block model.

The Swift Prospect RC drilling returned the following significant intercepts (Figure 3 & Table B):

- **6m @ 5.13g/t Au** from 95m including **2m @ 14.7g/t Au** from 98m (SFRC002)
- **5m @ 4.28g/t Au** from 146m including **2m @ 10.28g/t Au** from 146m (SFRC013)
- **3m @ 6.13g/t Au** from 123m including **1m @ 17.6g/t Au** from 123m (SFRC012)
- **9m @ 1.10g/t Au** from 152m (SFRC012)
- **8m @ 1.09g/t Au** from 145m (SFRC011)

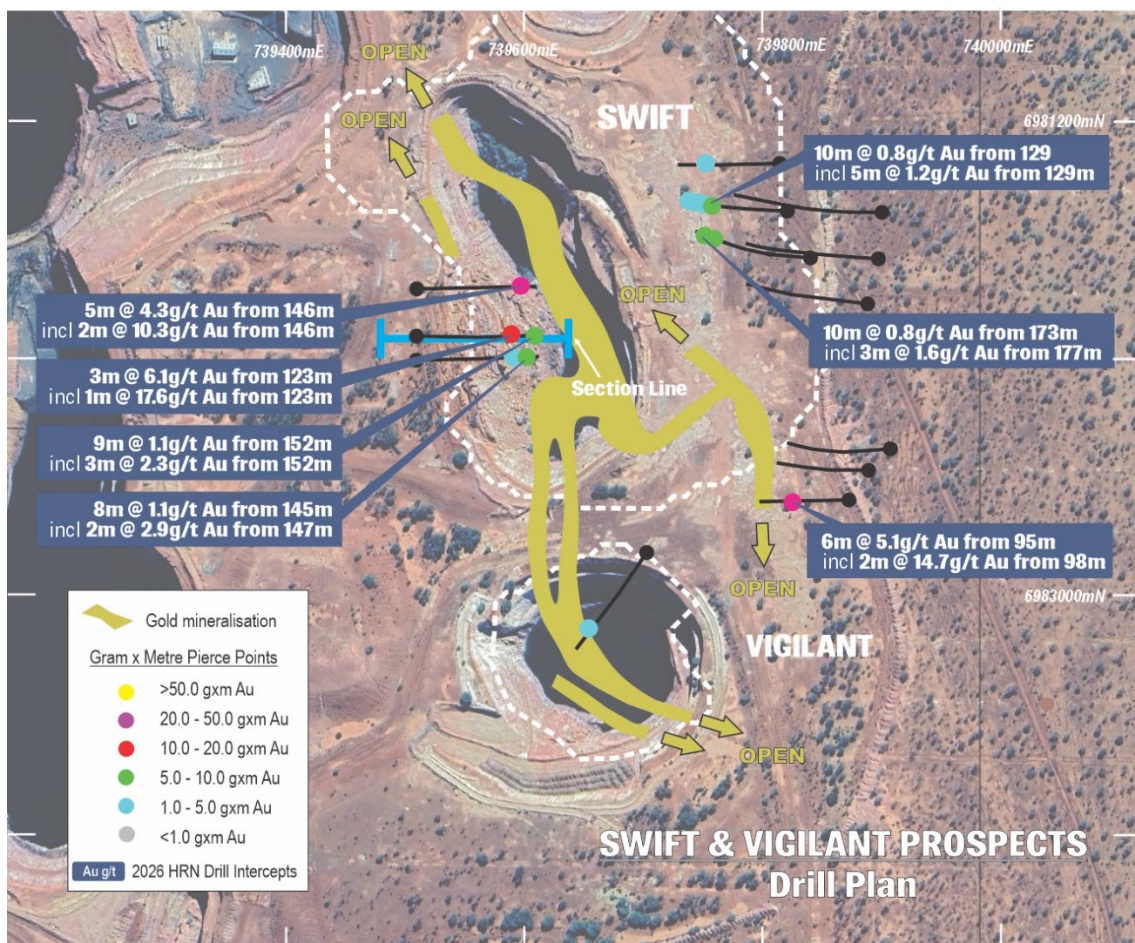


Figure 2: Swift and Vigilant drill hole plan showing \$2900/oz optimised pit shell outline (white dashes), recent drill holes and recent gold intercepts >8 GxM over satellite image.

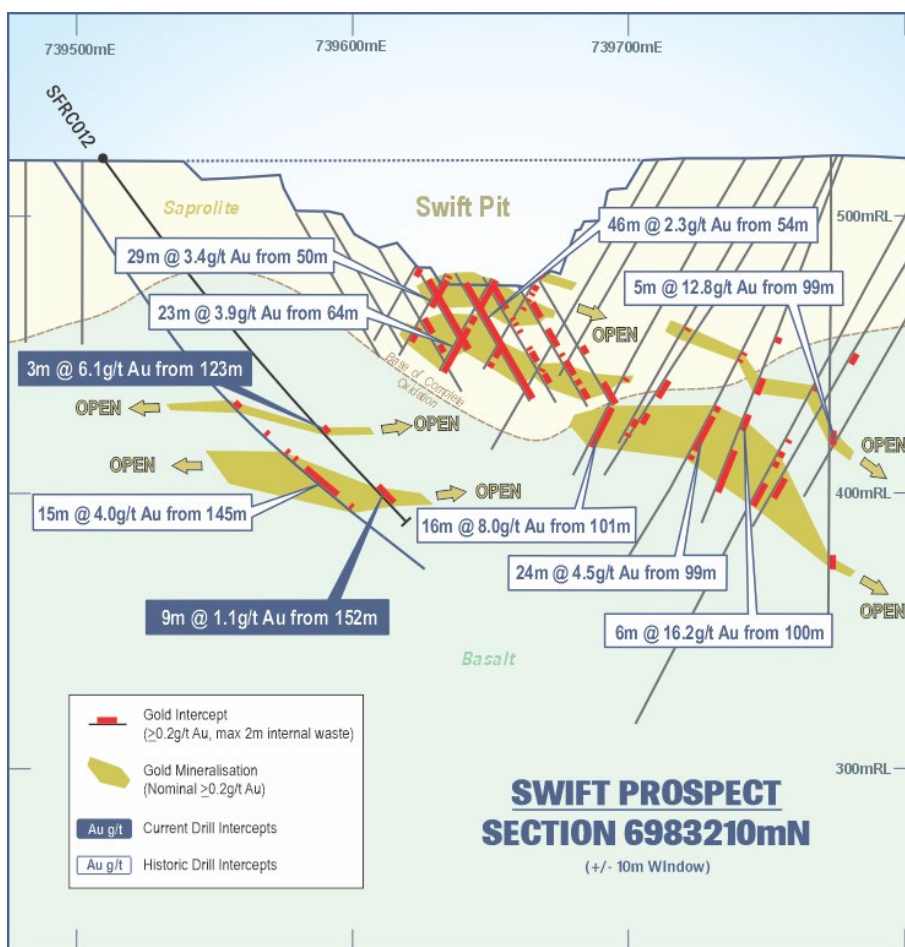


Figure 3: Swift cross section showing recent RC drill intercept, interpreted mineralised envelopes, previous drill intercepts (>40 GxM) & Swift open pit.

The high-grade intercept returned from SFRC002 is located 40m down dip of previous drilling and requires up-dip infill, and down dip and along strike extension drilling. The high-grade intercepts returned from SFRC012 and SFRC013 support the impressive 2021 result of **15m @ 4.0g/t Au** from 145m in SWRC006. Crucially, these results confirm the interpreted flat lying, stacked lode model to the west of the main Swift lode (Figure 3)¹. Follow up drilling will also be required to the east of these intercepts.

Diamond core extensions to three RC pre-collars (SWRC005-007D) aim to extend to the main Swift lode down dip to the east and provide important structural information about potential controls on the high-grade plunging gold shoots. These holes will be completed in the coming months prior to an MRE upgrade for Swift later in 2026.

Eagle Prospect

The Eagle Prospect is located 1.2km southeast of the historic Gidgee mill (Figure 1). The current MRE for Eagle is 2.02Mt @ 1.28g/t Au for 83,400oz (Table A).

The Company completed 33 RC holes for 2,590m aimed at testing for shallow open pittable mineralisation along strike of the existing resource (Figure 4). Significant intercepts (Table C) include:

- **3m @ 6.62g/t Au** from 43m including **1m @ 16.35g/t Au** from 43m (EARC057)

¹ Refer to Horizon Gold Limited ASX announcement titled "Significant RC Drilling results from Swift, Swan and Eagle Targets" dated 16 June 2021.

For personal use only

- **13m @ 1.50g/t Au** from 34m including **6m @ 2.77g/t Au** from 34m (EARC038)
- **8m @ 2.36g/t Au** from 58m including **4m @ 4.47g/t Au** from 58m (EARC053)
- **8m @ 1.13g/t Au** from 50m including **2m @ 3.09g/t Au** from 52m (EARC038)
- **5m @ 1.90g/t Au** from 29m including **2m @ 4.04g/t Au** from 29m (EARC057)
- **14m @ 0.81g/t Au** from 55m including **8m @ 1.02g/t Au** from 57m (EARC047)
- **15m @ 0.59g/t Au** from 35m including **4m @ 1.15g/t Au** from 38m (EARC042)
- **3m @ 2.85g/t Au** from 42m (EARC061)
- **5m @ 1.57g/t Au** from 48m including **1m @ 6.69g/t Au** from 48m (EARC058)
- **3m @ 2.47g/t Au** from 34m (EARC035)

Gold mineralisation down to about 70m below surface at Eagle is supergene related, with primary mineralisation hosted within steep west dipping quartz-carbonate-pyrite veins within sericite-carbonate altered basalt. The RC program has successfully extended the known gold mineralisation at Eagle for approximately 300m to the south of the current block model. Wireframing is underway in advance of completing an update to the Eagle MRE.

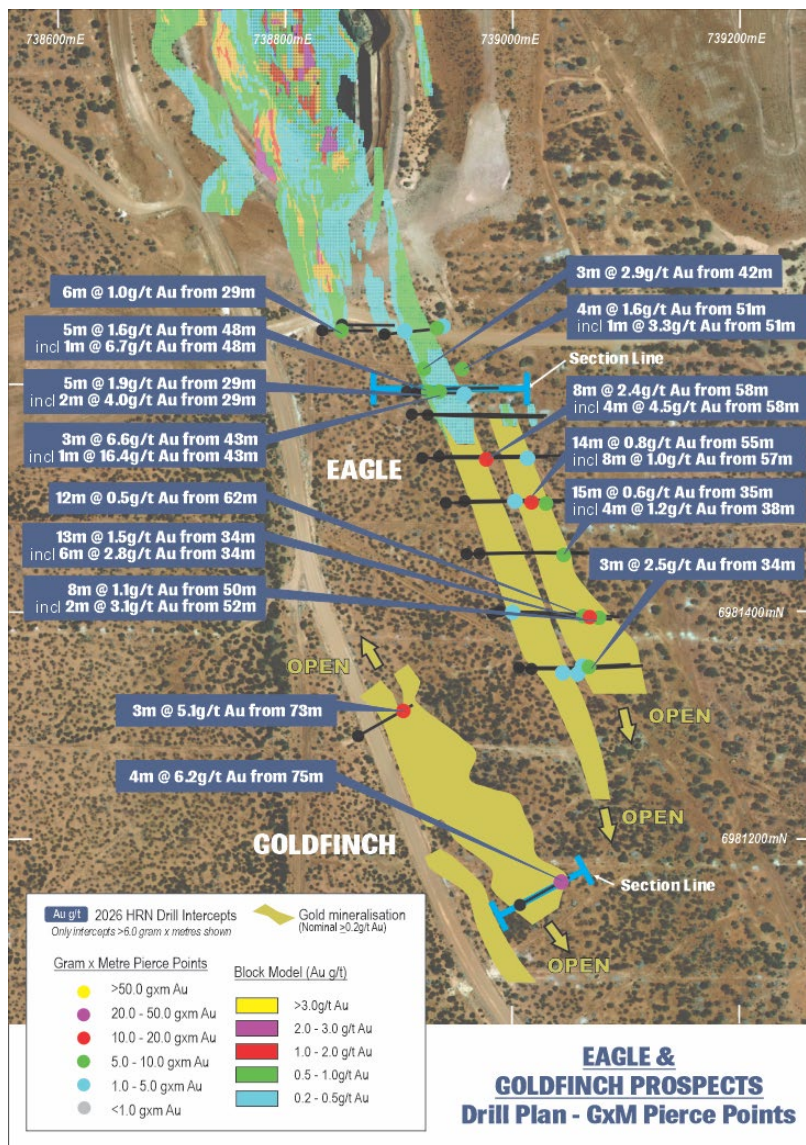


Figure 4: Eagle / Goldfinch drill hole plan showing recent recent gold intercepts >6 GxM over satellite image.



Figure 5: Eagle cross section showing interpreted mineralised zones and significant 2026 RC intercepts (>3 GxM).

Goldfinch Prospect

The Goldfinch Prospect is located 2.0km southeast of the Gidgee Mill. There is no MRE for this prospect. Two RC holes including one re-entry / extension hole were completed for 170m, as follow up to the RC program completed late in 2025. Significant assay results were returned from both holes (Figure 6 & Table D) including:

- **4m @ 6.19g/t Au** from 75m to EOH (GFRC032)
- **3m @ 5.11g/t Au** from 73m (GFRC030)

Gold mineralisation at Goldfinch down to approximately 40m below surface is supergene in origin. Below this depth primary mineralisation is hosted within moderate, west dipping quartz-sulphide veins within sericite-carbonate altered basalt (Figure 6). Geological wireframing is currently underway ahead of planned deeper drilling and the estimation of a maiden MRE for the prospect.

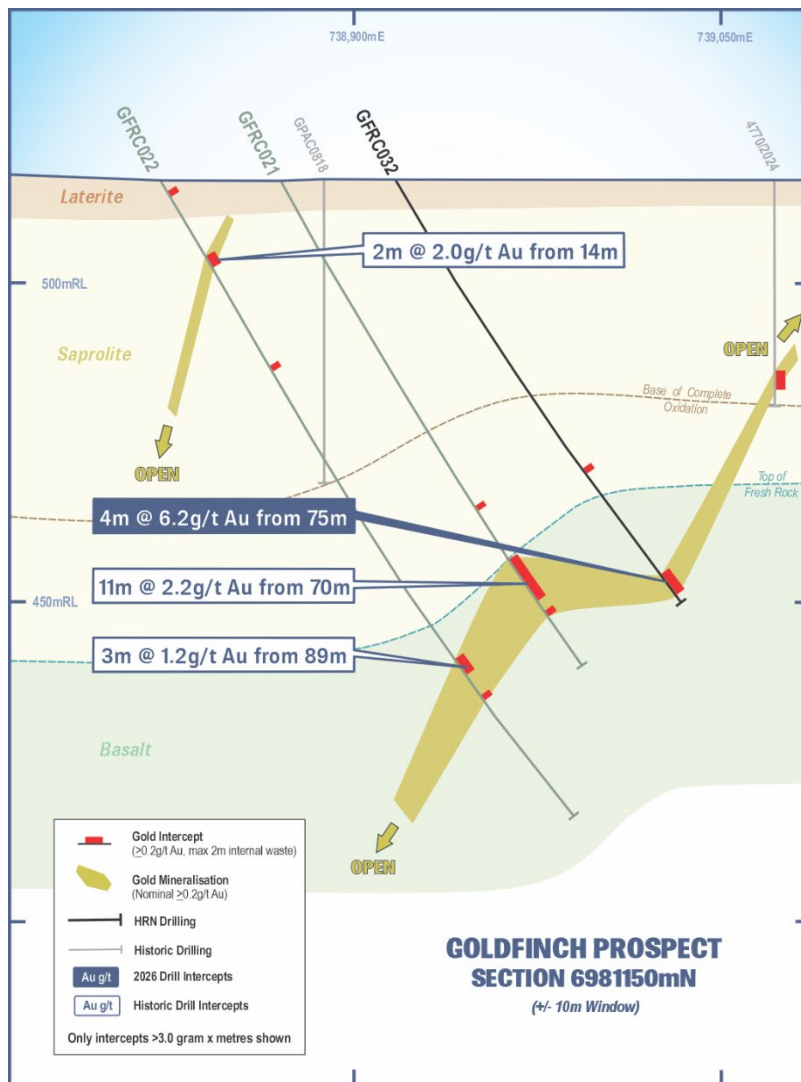


Figure 6: Goldfinch cross section showing interpreted mineralised zones and significant 2026 and previous RC intercepts.

Shrike South Prospect

The Shrike South Prospect is located 1.3km southeast of the Gidgee Mill. The Prospect has been mined historically by open cut methods over a total strike length of ~280m. The Prospect is not in the Company's current project-wide mineral resource estimations.

The Company completed twelve RC holes for 1,187m. The drilling aimed to test for shallow strike extensions to gold mineralisation beneath and along strike of the existing pit. Numerous significant intercepts were returned (Figure 7 & Table E) including:

- **11m @ 1.18g/t Au** from 72m including **5m @ 2.20g/t Au** from 73m (SSRC011)
- **7m @ 1.43g/t Au** from 82m including **3m @ 2.49g/t Au** from 82m (SSRC008)
- **7m @ 1.33g/t Au** from 65m (SSRC004)
- **7m @ 1.33g/t Au** from 68m (SSRC003)
- **5m @ 1.57g/t Au** from 30m (SSRC001)
- **2m @ 3.91g/t Au** from 55m (SSRC002)
- **7m @ 1.01g/t Au** from 72m including **1m @ 4.25g/t Au** from 72m (SSRC008)
- **6m @ 1.00g/t Au** from 46m including **1m @ 3.85g/t Au** from 50m (SSRC009)

Gold mineralisation down to approximately 60m below surface is supergene in origin. Below this depth primary mineralisation is hosted within steep west dipping quartz-sulphide veins within sericite altered basalt. Wireframing is underway in advance of completing a maiden MRE for the prospect.

For personal use only



Figure 7: Shrike South & Thornbill West drill hole plan showing recent drill intercepts (>6 GxM) & gram x metre pierce points over satellite image.

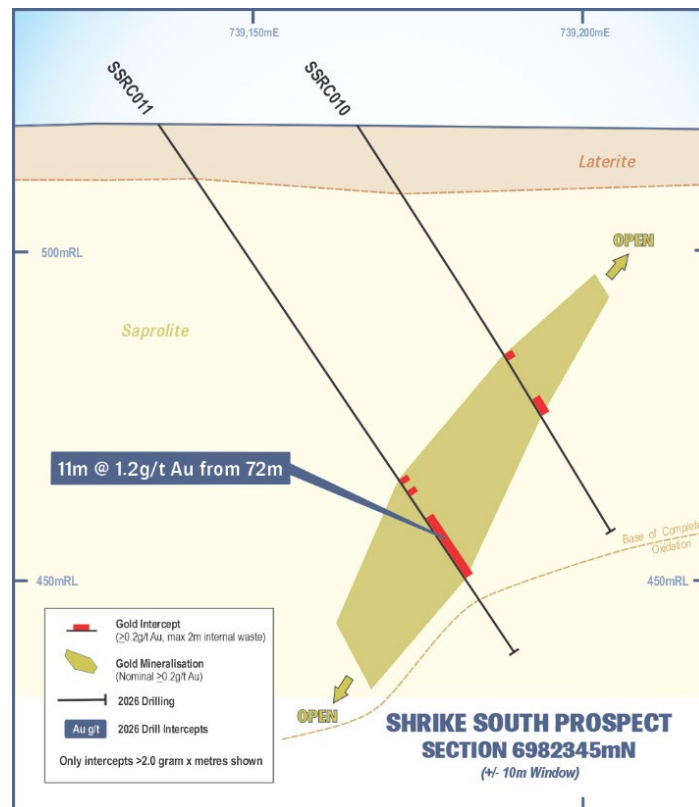


Figure 8: Shrike South cross section showing interpreted mineralised zone and significant intercepts (>10 GxM).

The Thornbill West Prospect is located 1.6km southeast of the Gidgee Mill, where the Company completed an additional three RC holes for 270m. Drilling returned the following significant gold intercepts (Figure 7, Table F):

- **20m @ 0.65g/t Au** from 7m including **3m @ 2.11g/t Au** from 22m (THRC012)
- **10m @ 0.62g/t Au** from 11m including **1m @ 3.08g/t Au** from 18m (THRC010)

Drilling has successfully extended gold mineralisation to the north of the prospect. Further drilling is planned to test for structural continuity and determine if this zone connects with the Shrike South prospect

The Vigilant Prospect is located 1.3km east of the Gidgee Mill and forms part of the Swan/Swift open cut and underground MRE. An infill program consisting of three RC holes totalling 311m were drilled to tighten the drill spacing within the current resource. The program returned a best intercept of 2m @ 1.39g/t Au from 130m in hole VIRCO10 (Table G). Moving forward, exploration drilling will shift focus toward testing the shallow supergene mineralisation at the southern end of the Vigilant open pit.

Feasibility Study Progress

The Gum Creek Feasibility Study (FS) is progressing well, risk assessments have been concluded, and a draft FS report nearing completion. The Study remains on schedule for market release mid-2026.

The Company believes the Gum Creek Gold Project will support a robust, commercially viable stand-alone mining operation. Sustained strength in the gold price further enhances the economics

established in the March 2024 Scoping Study² and provides a high degree of confidence for the upcoming Feasibility Study outcomes. Preparation work for the Mine Development and Closure Proposal (MDCP) and associated statutory applications is already underway.

About the Company

Horizon Gold Limited (ASX: HRN) is an exploration company focused on its 100% owned Gum Creek Project in Western Australia (Figure 9). The Gum Creek Gold Project represents an exciting gold exploration and potential development opportunity that currently contains a Mineral Resource Estimate of **37.97Mt @ 1.89g/t Au for 2.30 million ounces** (Table A) including Indicated and Inferred resource classifications in accordance with the Australasian Code for Reporting of Identified Mineral Resources and Ore Reserves (JORC Code 2012 edition). The indicated portion of the MRE is **26.72Mt @ 1.90g/t Au for 1.63 million ounces**, representing 71% of the total resource ounces.

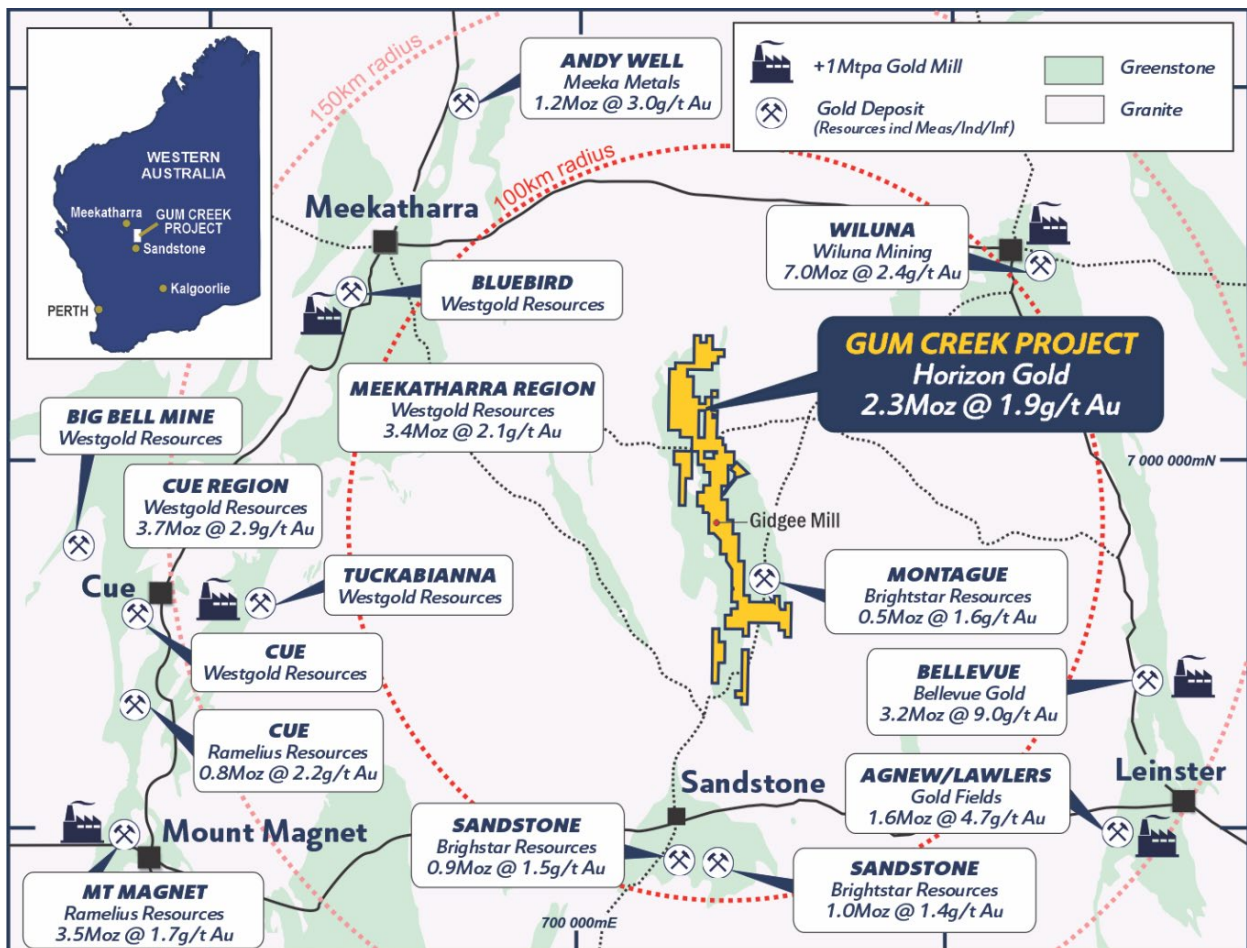


Figure 9: Gum Creek Gold Project and surrounding gold resources and operating gold processing facilities.

² Refer to Horizon Gold Limited ASX announcement titled "Compelling Gum Creek Scoping Study" dated 20 March 2024.

Horizon Gold Limited Mineral Resources

Table A: Gum Creek Gold Resources as at 4 November 2025

Resource	Resource Date	Cut-off grade (g/t Au)	Indicated			Inferred			Total		
			Tonnes	Au (g/t)	Gold (oz)	Tonnes	Au (g/t)	Gold (oz)	Tonnes	Au (g/t)	Gold (oz)
Swan/Swift OC	Nov-25	0.4	6,661,000	1.86	399,000	335,000	1.54	16,600	6,996,000	1.85	415,600
Swan UG*	Nov-25	1.5	935,000	4.45	133,700	798,000	3.90	100,000	1,733,000	4.19	233,700
Swift UG*	Nov-25	1.5	35,000	2.22	2,500	813,000	2.54	66,300	848,000	2.52	68,800
Wilson's UG*	Nov-25	1.5	2,759,000	4.37	387,400	126,000	3.16	12,800	2,885,000	4.31	400,200
Howards	Nov-25	0.4	6,095,000	1.13	221,800	751,000	0.97	23,500	6,846,000	1.11	245,300
Kingfisher OC	Nov-25	0.6	1,139,000	2.05	75,100	79,000	1.50	3,800	1,218,000	2.01	78,900
Kingfisher UG*	Nov-25	1.5	94,000	2.71	8,200	949,000	3.45	105,300	1,043,000	3.38	113,500
Heron	May-23	0.6	330,000	2.11	22,400	1,822,000	1.51	88,200	2,152,000	1.60	110,600
Eagle	Nov-25	0.4	817,000	1.27	33,400	1,202,000	1.29	50,000	2,019,000	1.28	83,400
Heron South	May-23	0.8	720,000	1.79	41,400	761,000	1.53	37,500	1,481,000	1.66	78,900
Shiraz	Nov-25	0.4	1,947,000	1.04	65,400	372,000	0.94	11,200	2,319,000	1.03	76,600
Wyooda**	Nov-25	0.8	557,000	1.54	27,500	718,000	1.56	36,100	1,275,000	1.55	63,600
Snook	Jul-22	0.8	75,000	2.57	6,200	846,000	1.76	47,800	921,000	1.82	54,000
Toedter	Nov-25	0.6	905,000	1.31	38,200	99,000	1.32	4,200	1,004,000	1.31	42,400
Hawk	Nov-25	0.6	591,000	1.38	26,200	167,000	1.27	6,800	758,000	1.35	33,000
Specimen Well	Nov-25	0.6	431,000	1.49	20,600	114,000	1.31	4,800	545,000	1.45	25,400
Wedge	Nov-25	0.6	427,000	1.42	19,500	56,000	2.83	5,100	483,000	1.58	24,600
Camel Bore	Jul-22	0.8	379,000	1.47	17,900	100,000	1.21	3,900	479,000	1.42	21,800
Melbourne Bitter	Nov-25	0.6	318,000	1.46	14,900	157,000	1.27	6,400	475,000	1.39	21,300
Hypero-Reliance	Nov-25	0.6	295,000	1.52	14,400	183,000	1.02	6,000	478,000	1.33	20,400
Kearrys	May-23	0.6	450,000	1.24	18,000	46,000	1.35	2,000	496,000	1.25	20,000
Psi	Jul-22	0.8	100,000	2.08	6,700	226,000	1.69	12,300	326,000	1.81	19,000
Deep South Reliance	Nov-25	0.6	229,000	1.53	11,300	17,000	0.91	500	246,000	1.49	11,800
Orion	Jul-22	0.8	69,000	1.49	3,300	182,000	1.40	8,200	251,000	1.43	11,500
Eagles Peak	May-23	0.6	264,000	1.19	10,100	41,000	0.99	1,300	305,000	1.16	11,400
Wahoo	Jul-22	0.8	-	-	-	258,000	1.25	10,400	258,000	1.25	10,400
Fangio	May-23	0.6	99,000	1.32	4,200	30,000	1.35	1,300	129,000	1.33	5,500
Total			26,721,000	1.90	1,629,300	11,248,000	1.86	672,300	37,969,000	1.89	2,301,600

* Cut-off grades for Swan, Swift, Wilsons and Kingfisher underground Indicated and Inferred are 1.5g/t Au.

** Wyooda includes the Kingston Town, Think Big and Manikato resources which are within 600m and 200m of each other respectively.

Note: Figures have been rounded.

Table B: Significant Drill Hole Intercepts (>2 GxM) – Swift RC Drilling

Hole ID	East	North	RL	Dip	Azi	Depth	From	To	Width	Au g/t
SFRC002	739872	6983083	519	-60	267	165	95	101	6	5.13
						incl	98	100	2	14.7
SFRC003	739907	6983124	519	-60	270	204				NSI
SFRC004	739888	6983107	519	-60	270	174				NSI
SFRC005D	739888	6983247	520	-60	270	120				NSR (pre-collar)
SFRC006D	739895	6983285	520	-60	270	120				NSR (pre-collar)
SFRC007D	739900	6983324	520	-60	270	120				NSR (pre-collar)
SFRC008	739820	6983324	520	-60.5	276	192	129	139	10	0.82
						incl	129	134	5	1.23
							146	151	5	0.69
							160	163	3	0.94
							169	181	12	0.40
SFRC009	739840	6983286	520	-60	274	190	163	169	6	0.92
						incl	165	167	2	1.52
							173	183	10	0.79
						incl	177	180	3	1.62
SFRC010	739813	6983365	520	-60.5	270	186	122	126	4	1.18
						incl	122	124	2	2.07
SFRC011	739510	6983200	520	-52.5	90	165	134	140	6	0.75
						incl	139	140	1	2.14
							145	153	8	1.09
						incl	147	149	2	2.94
SFRC012	739511	6983220	520	-52	90	168	123	126	3	6.13
						incl	123	124	1	17.6
							152	161	9	1.10
						incl	152	155	3	2.27
SFRC013	739511	6983260	520	-55	90	170	146	151	5	4.28
						incl	146	148	2	10.28

Notes: All coordinates are GDA94 zone 50, all intercepts use a 0.2 g/t Au lower cut, no upper cut, 2m maximum internal dilution and all intercepts >2.0 GxM are reported. NSR = no significant result >2 GxM.

Table C: Significant Drill Hole Intercepts (>2 GxM) – Eagle RC Drilling

Hole ID	East	North	RL	Dip	Azi	Depth	From	To	Width	Au g/t
EARC034	739065	6981351	517	-54	90	65			NSR	
EARC035	739046	6981350	517	-55	90	75	34	37	3	2.47
EARC036	739026	6981350	517	-54	90	90	52	57	5	0.78
							62	68	6	0.87
EARC037	739006	6981351	517	-55	90	100	83	86	3	0.85
							91	97	6	0.55
EARC038	739045	6981395	517	-55	90	70	34	47	13	1.50
						incl.	34	40	6	2.77
							50	58	8	1.13
						incl.	52	54	2	3.09
EARC039	739025	6981396	517	-55	90	80	62	74	12	0.52
						incl.	62	65	3	1.44
EARC040	739005	6981396	517	-55	90	85	27	31	4	0.83
EARC041	738984	6981396	517	-55	90	95			NSR	
EARC042	739020	6981451	517	-55	90	75	35	50	15	0.59
						incl.	38	42	4	1.15
EARC043	739000	6981451	517	-55	90	80			NSR	
EARC044	738981	6981451	517	-55	90	80			NSR	
EARC045	738960	6981450	517	-55	90	95			NSR	
EARC046	739000	6981495	517	-55	90	70	44	47	3	1.92

Hole ID	East	North	RL	Dip	Azi	Depth	From	To	Width	Au g/t
EARC047	738980	6981495	517	-55	90	80	44	49	5	0.58
							55	69	14	0.81
						incl.	57	65	8	1.02
EARC048	738960	6981495	517	-55	90	90			NSR	
EARC049	738940	6981494	517	-55	90	95			NSR	
EARC050	739000	6981535	517	-55	90	55	27	32	5	0.66
EARC051	738980	6981534	517	-55	90	75			NSR	
EARC052	738960	6981535	517	-55	90	80			NSR	
EARC053	738940	6981535	517	-55	90	80	58	66	8	2.36
						incl.	58	62	4	4.47
EARC054	738920	6981535	517	-55	90	80			NSR	
EARC055	738955	6981596	517	-55	90	60			NSR	
EARC056	738935	6981595	518	-55	90	80			NSR	
EARC057	738916	6981594	517	-55	90	80	29	34	5	1.90
						incl.	29	31	2	4.04
							43	46	3	6.62
						incl.	43	44	1	16.35
							66	68	2	1.61
EARC058	738905	6981595	518	-55	90	80	37	39	2	2.61
							48	53	5	1.57
						incl.	48	49	1	6.69
EARC059	738945	6981615	518	-55	90	60			NSR	
EARC060	738925	6981614	518	-55	90	75	51	55	4	1.64
						incl.	51	52	1	3.30
EARC061	738895	6981615	518	-55	90	80	42	45	3	2.85
EARC062	738875	6981616	518	-55	90	80	47	50	3	0.85
EARC063	738886	6981645	518	-55	90	80	20	30	10	0.40
EARC064	738851	6981653	518	-55	90	80			NSR	
EARC065	738831	6981649	518	-55	90	80	29	35	6	1.03
EARC066	738910	6981646	519	-55	80	60	38	42	4	1.40
							49	51	2	1.04

Notes: All coordinates are GDA94 zone 50, all intercepts use a 0.2 g/t Au lower cut, no upper cut, 2m maximum internal dilution and all intercepts >2.0 GxM are reported. NSR = no significant result >2 GxM.

Table D: Significant Drill Hole Intercepts (>2 GxM) – Goldfinch RC Drilling

Hole ID	East	North	RL	Dip	Azi	Depth	From	To	Width	Au g/t
GFRC030	738863	6981287	517	-52	56	90	73	76	3	5.11
GFRC032	739005	6981141	516	-60	56	80	75	79	4	6.19

Notes: All coordinates are GDA94 zone 50, all intercepts use a 0.2 g/t Au lower cut, no upper cut, 2m maximum internal dilution and all intercepts >2.0 GxM are reported.

Table E: Significant Drill Hole Intercepts (>2 GxM) – Shrike South RC Drilling

Hole ID	East	North	RL	Dip	Azi	Depth	From	To	Width	Au g/t
SSRC001	739143	6982051	518	-80	90	110	30	35	5	1.57
SSRC002	739143	6982029	519	-80	90	110	55	57	2	3.91
SSRC003	739066	6982131	519	-55	90	105	68	75	7	1.33
							82	85	3	0.81
SSRC004	739077	6982089	518	-55	90	131	47	54	7	0.49
							65	72	7	1.33
							101	106	5	0.51
SSRC005	739177	6982390	519	-55	90	75				NSI
SSRC006	739089	6982255	518	-55	90	78	26	29	3	1.74
SSRC007	739160	6982294	519	-55	90	80	67	70	3	0.78

Hole ID	East	North	RL	Dip	Azi	Depth	From	To	Width	Au g/t	
SSRC008	739141	6982294	519	-55	90	110	72	79	7	1.01	
							incl	72	73	1	4.25
								82	89	7	1.43
SSRC009	739136	6982321	519	-60	90	100	46	52	6	1.00	
							incl	50	51	1	3.85
SSRC010	739166	6982345	519	-56	90	72				NSI	
SSRC011	739136	6982345	519	-55	90	96	72	83	11	1.18	
							incl	73	78	5	2.20
SSRC012	739075	6982110	520	-55	90	120				Results pending	

Notes: All coordinates are GDA94 zone 50, all intercepts use a 0.2 g/t Au lower cut, no upper cut, 2m maximum internal dilution and all intercepts >2.0 GxM are reported. NSR = no significant result >2 GxM.

Table F: Significant Drill Hole Intercepts (>2 GxM) – Thornbill West RC Drilling

Hole ID	East	North	RL	Dip	Azi	Depth	From	To	Width	Au g/t
THRC010	739063	6981912	518	-60	90	70	11	21	10	0.62
							incl	18	19	1
THRC011	739077	6981932	518	-60	90	50				NSR
THRC012	739058	6981932	518	-60	90	70	7	27	20	0.65
							incl	22	25	3

Notes: All coordinates are GDA94 zone 50, all intercepts use a 0.2 g/t Au lower cut, no upper cut, 2m maximum internal dilution and all intercepts >2.0 GxM are reported. NSR = no significant result >2 GxM.

Table G: Significant Drill Hole Intercepts (>2 GxM) – Vigilant RC Drilling

Hole ID	East	North	RL	Dip	Azi	Depth	From	To	Width	Au g/t
VIRC008	739711	6982684	519	-55	90	55				NSR
VIRC009	739695	6982684	519	-55	86	70				NSR
VIRC010	739703	6983038	522	-54.5	215	186	130	132	2	1.39

Notes: All coordinates are GDA94 zone 50, all intercepts use a 0.2 g/t Au lower cut, no upper cut, 2m maximum internal dilution and all intercepts >2.0 GxM are reported. NSR = no significant result >2 GxM.

This ASX announcement was authorised for release by the Horizon Board.

For further information contact:

Scott Williamson
 Managing Director
 +61 8 6331 6092
info@horizongold.com.au

Competent Persons Statement:

The information in this announcement that relates to exploration activities, exploration results and Mineral Resources is based on information compiled by Mr Leigh Ryan, who is a member of The Australasian Institute of Geoscientists. Mr Ryan is the General Manager - Exploration at Horizon Gold Limited and holds shares and options in the Company, Mr Ryan has sufficient experience, which is relevant to the style of mineralisation and type of deposit under consideration and to the activity which he is undertaking to qualify as a Competent Person as defined in the 2012 Edition of the "Australasian Code for Reporting of Exploration Results, Mineral Resources and Ore Reserves. Mr Ryan consents to the inclusion in the report of the matters based on information provided in the form and context in which it appears.

No New Information or Data:

This announcement contains references to Mineral Resource estimates, all of which have been cross referenced to previous market announcements. The Company confirms that it is not aware of any additional information or data that materially affects the information included in the relevant market announcements and, in the case of estimates of Mineral Resources, that all material assumptions and technical parameters underpinning the estimates in the relevant market announcement continue to apply and have not materially changed.

Forward Looking Statements:

This ASX announcement may contain certain "forward-looking statements" which may not have been based solely on historical facts but rather may be based on the Company's current expectations about future events and results. Where the Company expresses or implies an expectation or belief as to future events or results, such expectation or belief is expressed in good faith and believed to have a reasonable basis. However, forward looking statements are subject to risks, uncertainties, assumptions and other factors, which could cause actual results to differ materially from future results expressed, projected or implied by such forward-looking statements. Such risks include, but are not limited to metals price volatility, currency fluctuations, as well as political and operational risks and governmental regulation and judicial outcomes.

For personal use only

APPENDIX 2: JORC TABLE 1 (SECTIONS 1 AND 2)

Section 1 - Sampling Techniques and Data

(Criteria in this section apply to all succeeding sections.)

Criteria	JORC Code explanation	Commentary
Sampling techniques	<ul style="list-style-type: none"> • Nature and quality of sampling (eg cut channels, random chips, or specific specialised industry standard measurement tools appropriate to the minerals under investigation, such as down hole gamma sondes, or handheld XRF instruments, etc). These examples should not be taken as limiting the broad meaning of sampling. • Include reference to measures taken to ensure sample representivity and the appropriate calibration of any measurement tools or systems used. • Aspects of the determination of mineralisation that are Material to the Public Report. • In cases where „industry standard“ work has been done this would be relatively simple (eg „reverse circulation drilling was used to obtain 1 m samples from which 3 kg was pulverised to produce a 30 g charge for fire assay“). In other cases more explanation may be required, such as where there is coarse gold that has inherent sampling problems. Unusual commodities or mineralisation types (eg submarine nodules) may warrant disclosure of detailed information. 	<ul style="list-style-type: none"> • Reverse Circulation (RC) drill holes were routinely sampled at 1m intervals down the hole. The upper sections of some holes were sampled at 2m intervals. • Samples were collected at the drill rig using an industry standard rig-mounted cone splitter to collect a nominal 2 - 3 kg sub sample in a numbered calico sample bag, with the remaining sample retained at the drill site for future resampling and/or metallurgical sampling if required. • Routine standard reference material, sample blanks, and sample duplicates were inserted/collected at every 25th sample in the sample sequence. • All RC samples were submitted to Australian Laboratory Services (ALS) in Perth for preparation (including pulverising) to produce a 50g sub-sample for analysis for gold by 50g Fire Assay. <p><u>Pre-2014 Drillholes</u></p> <ul style="list-style-type: none"> • All RC samples were collected at 1m intervals through the drill rig cyclone and then split via riffle and cone splitters. RC samples were typically dry. Composite samples were collected by tube sampling the bulk RC sample bags. • Initially assaying utilised the aqua regia process but most assays used in this report have been by fire assay with an AAS finish using the site laboratory or off-site laboratories. A 50g charge was generally used. • After the year 2000, samples (mainly grade control) were assayed at the accredited on-site laboratory at Gidgee using the Leachwell method. Leachwell cyanide (bottle-roll) assays are apparently more predictive of expected recoveries from Carbon-in-Pulp gold recovery plants, so provide a more realistic grade estimate.
Drilling techniques	<ul style="list-style-type: none"> • Drill type (eg core, reverse circulation, open-hole hammer, rotary air blast, auger, Bangka, sonic, etc) and details (eg core diameter, triple or standard tube, depth of diamond tails, face-sampling bit or other type, whether core is oriented and if so, by what method, etc). 	<ul style="list-style-type: none"> • All RC holes were completed by reverse circulation (RC) drilling techniques using a DR05 SREPS SR650 drill rig and auxiliary compressor. • Drill rod diameter was 4.5" (114mm) and drill bit diameter was nominally 143mm to 146mm. • A face sampling down hole hammer (5' type 760 SREPS) was used at all times. • All RC drill holes were surveyed for down hole deviation using an Axis Champ Navigator north seeking downhole gyro with downhole readings collected every 5m. <p><u>Pre-2014 Drillholes</u></p> <ul style="list-style-type: none"> • RC drilling was completed with industry standard RC drill rigs using a 4.5" to 5.5" drill bit with either a cross-over sub or a face sampling hammer.

For personal use only

Criteria	JORC Code explanation	Commentary
Drill sample recovery	<ul style="list-style-type: none"> • Method of recording and assessing core and chip sample recoveries and results assessed. • Measures taken to maximise sample recovery and ensure representative nature of the samples. • Whether a relationship exists between sample recovery and grade and whether sample bias may have occurred due to preferential loss/gain of fine/coarse material. 	<ul style="list-style-type: none"> • A qualitative estimate of sample recovery was done for each RC sample metre collected from the drill rig. • A qualitative estimate of RC sample weight was completed to ensure consistency of sample size and to monitor sample recoveries. • Most RC material was dry when sampled, with damp and wet samples noted in sample sheets and referred to when assays were received. • RC sample recovery and quality is considered to be adequate for the drilling technique employed. <p><u>Pre-2014 Drillholes</u></p> <ul style="list-style-type: none"> • Where documented, RC drilling returned good recoveries, however drill recoveries for some historical holes are not known. • All RC samples were split and mixed in the riffle splitting process. • There is no evidence of there being sample bias due to non-representative or preferential sampling. • No apparent relationships were noted in relation to sample recovery and grade.
Logging	<ul style="list-style-type: none"> • Whether core and chip samples have been geologically and geotechnically logged to a level of detail to support appropriate Mineral Resource estimation, mining studies and metallurgical studies. • Whether logging is qualitative or quantitative in nature. Core (or costean, channel, etc) photography. • The total length and percentage of the relevant intersections logged. 	<ul style="list-style-type: none"> • All RC drill holes were geologically logged by a qualified Geologist. • Qualitative and quantitative geological logging recorded colour, grain size, weathering, oxidation, lithology, alteration, veining and mineralisation including the abundance of specific minerals, veining, and alteration using an industry standard logging and geological coding system. • A small sample of all RC drill material was retained in chip trays for future reference and validation of geological logging. <p><u>Pre-2014 Drillholes</u></p> <ul style="list-style-type: none"> • All historical drill holes have been logged using the various company logging codes. The type of drill log varies with time depending on drill technique, year and company. • Logging included codes and descriptions of weathering, oxidation, lithology, alteration and veining. • Geological logging is qualitative and based on visual field estimates. • Not all RC logs have been converted to a digital format.
Sub-sampling techniques and sample preparation	<ul style="list-style-type: none"> • If core, whether cut or sawn and whether quarter, half or all core taken. • If non-core, whether riffled, tube sampled, rotary split, etc and whether sampled wet or dry. • For all sample types, the nature, quality and appropriateness of the sample preparation technique. • Quality control procedures adopted for all sub-sampling stages to maximise representivity of samples. • Measures taken to ensure that the sampling is representative of the in situ material collected, including for instance results for field duplicate/second-half sampling. • Whether sample sizes are appropriate to the grain size of the material being sampled. 	<ul style="list-style-type: none"> • All RC samples were cone split at the drill rig with sample size and wet/dry notes made on RC sample sheets. • RC duplicate samples were taken every 25 samples to evaluate whether samples were representative and as a check on laboratory methods. • Sample preparation was undertaken by ALS Perth. • At the laboratory, samples were weighed, dried and crushed to - 6mm. The crushed sample was subsequently bulk-pulverised in an LM5 ring mill to achieve a nominal particle size of 85% passing <75µm. • Sample sizes and laboratory preparation techniques are considered to be appropriate for the commodity being targeted. <p><u>Pre-2014 Drillholes</u></p> <ul style="list-style-type: none"> • RC sampling involved 1m RC cuttings, split using riffle splitter in dry materials and a wedge splitter or rotary splitter in wet materials. Usually a 2 - 3kg sample was retained. • Where it has been suspected that drillholes were drilled down dip, scissor holes have been drilled. • Most drilling showed good sample recovery with the exception of some holes drilled in 1989. All RC samples were thoroughly mixed in the riffle splitting process. There is no stated evidence of there being sample bias due to preferential sampling. There is no relationship between sample recovery and grade. • Sample sizes and laboratory preparation techniques are considered to be appropriate for the commodity being targeted.

For personal use only

Criteria	JORC Code explanation	Commentary
Quality of assay data and laboratory tests	<ul style="list-style-type: none"> The nature, quality and appropriateness of the assaying and laboratory procedures used and whether the technique is considered partial or total. For geophysical tools, spectrometers, handheld XRF instruments, etc, the parameters used in determining the analysis including instrument make and model, reading times, calibrations factors applied and their derivation, etc. Nature of quality control procedures adopted (eg standards, blanks, duplicates, external laboratory checks) and whether acceptable levels of accuracy (ie lack of bias) and precision have been established 	<ul style="list-style-type: none"> Analysis for gold only was undertaken at ALS Perth using 50g Fire Assay with AAS finish to a lower detection limit of 0.01ppm. Fire assay is considered a "total" assay technique. No geophysical tools or other non-assay instrument types were used in the analyses reported. Review of routine standard reference material and sample blanks suggest there are no significant analytical bias or preparation errors in the reported analyses. Results of analyses from field sample duplicates are consistent with the style of mineralisation being evaluated and considered to be representative of the geological zones which were sampled. Internal laboratory QAQC checks are reported by the laboratory. Review of the internal laboratory QAQC suggests the laboratory is performing within acceptable limits. <p><u>Pre-2014 Drillholes</u></p> <ul style="list-style-type: none"> Initially, assaying utilised the aqua regia process but most assays referred to in this report have been by fire assay with an AAS finish using the site laboratory or off-site laboratories. A 50g charge was used. After 2000, samples were assayed at the Gidgee accredited mine-site laboratory using the Leachwell method with approximately 30g of sample pulverised to 85% passing -200 mesh. The analytic techniques are considered appropriate. Where coarse gold occurred, offsite screen fire assaying was carried out using a 105 micron sieve. Samples were submitted to off-site laboratories with check assays carried out in 1988. Further check assays were carried out in other years however this data has not been analysed. Some CRMs and blank samples were used prior to 2002 however there is insufficient information to complete an accurate analysis. There are records of laboratory standards and blanks having been submitted post 2002 and an analysis of these shows good correlation between results. No evidence has been found in the mining process that there were issues with assaying. An analysis of duplicates showed that in general the precision of samples was adequate.
Verification of sampling and assaying	<ul style="list-style-type: none"> The verification of significant intersections by either independent or alternative company personnel. The use of twinned holes. Documentation of primary data, data entry procedures, data verification, data storage (physical and electronic) protocols. Discuss any adjustment to assay data. 	<ul style="list-style-type: none"> All RC sampling data was recorded in the field in hard copy form, and subsequently data entered into Excel spreadsheets. Assay results are merged with sampling data using established database protocols run in-house by HRN. Digital data (Excel spreadsheets) were uploaded into a relational database and validated by experienced database personnel and geological staff. Plans, cross sections and long sections were generated, and visual validation was completed in 3D (Micromine) as further quality control. Twin holes were not utilized to verify results; however, some infill verification holes were completed to test the strike continuity of mineralisation. Virtually all drilling confirmed expected geological and mineralogical interpretations. The deposits are reasonably continuous in terms of mineralisation and grade. The continuity and consistency of the grade intercepts down dip and along strike give reasonable confidence in the verification of the grade and style of deposit. All historic reported data has been reported in technical reports submitted by previous tenement holders to the Western Australian Government which are now available as open file. No adjustments were made to assay data except for replacing less than detection limit values with negative detection limit numerical values. All significant intersections reported have been compiled and reviewed by senior geological personnel from the Company.
Location of data points	<ul style="list-style-type: none"> Accuracy and quality of surveys used to locate drill holes (collar and down-hole surveys), trenches, mine workings 	<ul style="list-style-type: none"> Drill hole collar locations were determined using GDA94 Zone 50 coordinates and datum. Drill hole collars were positioned and picked up on hole completion using a Carlson BRx7 DGPS (GDA94 Zone 50). DGPS eastings, northings and RL's have been used for all RC hole collars.

For personal use only

Criteria	JORC Code explanation	Commentary
	<p>and other locations used in Mineral Resource estimation.</p> <ul style="list-style-type: none"> • Specification of the grid system used. • Quality and adequacy of topographic control. 	<ul style="list-style-type: none"> • The topography at all prospects drilled is flat, however 3D topographic surfaces or Digital Terrain Models (DTMs) were built using a combination of mine surveyor pickups, drill hole DGPS RL pickups and RL's from specifically selected DGPS points. • Recently flown LiDAR survey data has been used to check all collar RL's. • Locational accuracy at the collar and down the drill hole is considered appropriate for this stage of exploration and for resource estimation work. <p><u>Pre-2014 Drillholes</u></p> <ul style="list-style-type: none"> • Planned drill hole locations were positioned by either hand-held global positioning satellite (GPS) in AMG84 or GDA94 zone 50 datums or pegged on local grids by a mine surveyor and transformed to GDA94 coordinates. The majority of holes have subsequently been picked up by DGPS and were generally found to be within 1m horizontal and 1m vertical accuracy. • Historic drilling coordinates include both local, AMG84 and GDA94 coordinates. The Company database contains all sets of coordinates, but for the purpose of this report all grid coordinates are GDA94 – Zone 50 grid datum. • The topography at all prospects drilled is flat. • All drill collars were displayed in Micromine and visually checked against the DTMs. The DTMs were created using a combination of surveyed pit and waste dump pickups, DGPS pickups of historical and more recent drill hole collars, and specifically selected DGPS pickup points. RL data bias or error is considered low given the flat topography at all prospects reported. • Down-hole surveys were routinely performed every 5m to 30m using a range of single shot, electronic multi-shot and north seeking gyro tools. A visual check of the traces in Micromine was also completed, with no anomalous surveys being identified. All down survey data is recorded in the Company's drill hole database. • Survey details for some historical holes are not known. • Location data is considered to be of sufficient accuracy for reporting of mineral resources.
Data spacing and distribution	<ul style="list-style-type: none"> • Data spacing for reporting of Exploration Results. • Whether the data spacing and distribution is sufficient to establish the degree of geological and grade continuity appropriate for the Mineral Resource and Ore Reserve estimation procedure(s) and classifications applied. • Whether sample compositing has been applied. 	<ul style="list-style-type: none"> • RC holes reported were drilled at 20m spacings on sections generally 20m apart (or on 40m infill sections). All holes were drilled between -52° and -60° and towards various bearings (as per details in tables B to G). • The reported drilling has not yet been used to estimate any mineral resources or reserves, however the infill nature of the drilling and the resulting drill hole distribution is sufficient to establish the degree of geological and grade continuity appropriate for Mineral Resource estimation procedures and classifications. • Sample compositing was not applied to the reported intervals.
Orientation of data in relation to geological structure	<ul style="list-style-type: none"> • Whether the orientation of sampling achieves unbiased sampling of possible structures and the extent to which this is known, considering the deposit type. • If the relationship between the drilling orientation and the orientation of key mineralised structures is considered to have introduced a sampling bias, this should be assessed and reported if material. 	<ul style="list-style-type: none"> • Drilling has targeted known mineralisation which has been previously drilled in some detail. Holes have therefore generally been drilled to intersect target zones at an optimal orientation (perpendicular) and no significant sampling bias is expected.
Sample security	<ul style="list-style-type: none"> • The measures taken to ensure sample security. 	<ul style="list-style-type: none"> • Samples are stored on site in a locked compound before being delivered by company personnel to the Toll/Global Express depot in Meekatharra, prior to road transport to the laboratory in Perth via a large reputable trucking company (normally Toll or Global Express).

Criteria	JORC Code explanation	Commentary
		<p><u>Pre-2014 Drillholes</u></p> <ul style="list-style-type: none"> There is no evidence to suggest inadequate drill sample security prior to 2014.
Audits or reviews	<ul style="list-style-type: none"> The results of any audits or reviews of sampling techniques and data. 	<ul style="list-style-type: none"> There have been no external audits or reviews of the Company's sampling techniques or data. <p><u>Pre-2014 Drillholes</u></p> <ul style="list-style-type: none"> An Audit was carried out in 2003 by Resource Evaluations Pty Ltd. The only issue raised was that a Kempe diamond rig was used for underground drilling and the resulting BQ core samples may have been too small. Underground drilling assays have not been reported here.

Section 2 Reporting of Exploration Results

(Criteria listed in the preceding section also apply to this section.)

Criteria	JORC Code explanation	Commentary
Mineral tenement and land tenure status	<ul style="list-style-type: none"> Type, reference name/number, location and ownership including agreements or material issues with third parties such as joint ventures, partnerships, overriding royalties, native title interests, historical sites, wilderness or national park and environmental settings. The security of the tenure held at the time of reporting along with any known impediments to obtaining a licence to operate in the area. 	<p>The tenements are located in the Murchison region of Western Australia, and extend from ~60km to ~130km north of Sandstone. The southern half of the Gum Creek Gold Project lies dominantly within the Gidgee Pastoral Lease, which is owned by Gum Creek Gold Mines Pty Ltd (a wholly owned subsidiary of Horizon Gold Limited). The northern half of the Project mainly lies within the Youno Downs Pastoral Lease.</p> <p>Environmental liabilities at Gum Creek pertain to historical mining activities mainly within M57/634.</p> <p>All drilling occurred on Mining Lease M57/634 (Swift, Eagle, Goldfinch, Shrike South, Thornbill West and Vigilant) which is held 100% by Gum Creek Gold Mines Pty Ltd.</p> <p>No Native Title applications or Native Title determined areas cover M57/634.</p> <p>Various royalties exist over specific parts of certain mining leases as noted in Section 8 of the Horizon Gold Ltd prospectus ASX announcement dated 19 December 2016.</p>
Exploration done by other parties	<ul style="list-style-type: none"> Acknowledgment and appraisal of exploration by other parties. 	<p>Significant historical exploration work has been completed via "industry standard" procedures by other Companies including geochemical surface sampling, mapping, airborne and surface geophysical surveys, and substantial RAB, RC and DD drilling.</p> <p>The project boasts a long list of reputable previous owners and operators including: Pancontinental Mining Ltd, Dalrymple Resources, Metana Resources, Noranda Pty Ltd, Legend Mining Ltd, Kundana Gold Pty Ltd, Goldfields Kalgoorlie Ltd, Australian Resources Ltd, Arimco Mining Pty Ltd, Apex Gold Pty Ltd, Abelle Ltd and Panoramic Resources Ltd.</p> <p>The Gum Creek Gold Project has previously been mined for gold by open pit and underground techniques. Exploration and mining completed by previous owners since discovery has led to good understanding of geology, rock mechanics and mineralisation especially within the areas mined.</p>
Geology	<ul style="list-style-type: none"> Deposit type, geological setting and style of mineralisation. 	<p>The project is located in the Gum Creek Greenstone Belt, within the northern part of the Southern Cross Province of the Youanmi Terrane, a part of the Archaean Yilgarn craton in Western Australia. The Gum Creek Greenstone belt forms a lensoid, broadly sinusoidal structure approximately 110 km long and 24 km wide. It is dominated by mafic volcanic and sedimentary sequences.</p> <p><u>Swift</u> Gold mineralisation at Swift occurs as complex conjugate quartz-carbonate vein arrays associated with brittle dilational openings developed along major shears within mafic host rocks. Carbonate-sulphide wall rock alteration is common about</p>

Criteria	JORC Code explanation	Commentary
		<p>mineralised zones and extensive supergene enrichment often overlays primary mineralisation zones.</p> <p><u>Eagle</u> Gold mineralisation at Eagle occurs as steeply dipping quartz-carbonate shear veins and flat lying quartz-carbonate tension vein arrays developed in altered basalt within the NNW oriented steeply west dipping Kingfisher shear zone. Carbonate-sericite-sulphide wall rock alteration is common proximal to mineralised zones and extensive supergene gold enrichment often overlays primary mineralisation.</p> <p><u>Goldfinch</u> Gold mineralisation at Goldfinch is flat lying (supergene) with primary mineralisation dipping moderately to the west. Mineralisation is defined to a maximum vertical depth of approximately 100 metres, has a continuous 900 metre strike length and is associated with quartz veined limonitic saprolite and weathered quartz veined basalt. Sericite-carbonate-sulphide wall rock alteration is common within primary mineralised zones. The top of fresh rock is ~70m below surface.</p> <p><u>Shrike South</u> Gold mineralisation down to about 60m below surface is supergene related, with primary mineralisation hosted within steep west dipping quartz-sulphide veins within sericite altered basalt. Mineralisation is associated with 4 separate sub-parallel lodes defined to a maximum vertical depth of approximately 100 metres, over a continuous 360 metre strike length. The top of fresh rock is ~60m below surface.</p> <p><u>Thornbill West</u> Gold mineralisation at Thornbill West is flat lying (supergene) with primary mineralisation dipping steeply to the west. Mineralisation is defined to a maximum vertical depth of approximately 80 metres, has a continuous 200 metre strike length and is associated with quartz veined limonitic saprolite and weathered quartz veined basalt. Sericite-carbonate-sulphide wall rock alteration is associated with primary mineralisation. The top of fresh rock is ~100m below surface.</p> <p><u>Vigilant</u> Gold mineralisation at Vigilant is generally flat lying to shallow east dipping (supergene) with primary mineralisation dipping moderately to the east. Mineralisation is defined to a maximum vertical depth of approximately 160 metres, has a continuous 250 metre strike length and is associated with quartz veined limonitic saprolite and weathered quartz veined basalt. Sericite-carbonate-pyrite wall rock alteration is associated with primary mineralisation. The top of fresh rock is ~80m below surface.</p>
Drill hole Information	<ul style="list-style-type: none"> • A summary of all information material to the understanding of the exploration results including a tabulation of the following information for all Material drill holes: <ul style="list-style-type: none"> • easting and northing of the drill hole collar • elevation or RL (Reduced Level – elevation above sea level in metres) of the drill hole collar • dip and azimuth of the hole • down hole length and interception depth • hole length. • If the exclusion of this information is justified on the basis that the information is not Material and 	<p>Relevant drill hole information and reported results are tabulated within the body of this announcement.</p> <p>The drill holes reported have the following parameters applied:</p> <ul style="list-style-type: none"> • Grid co-ordinates are GDA94 zone 50 • Collar elevation is defined as height above sea level in metres (RL) • Dip is the inclination of the hole from the horizontal. Azimuth is reported in GDA94 zone 50 degrees as the direction toward which the hole is drilled. • Depth of the hole is the distance from the surface to the end of the hole, as measured along the drill trace. • Intercept Width is the down hole distance of an intercept as measured along the drill trace.

For personal use only

Criteria	JORC Code explanation	Commentary
	<p>this exclusion does not detract from the understanding of the report, the Competent Person should clearly explain why this is the case.</p>	
<p>Data aggregation methods</p>	<ul style="list-style-type: none"> In reporting Exploration Results, weighting averaging techniques, maximum and/or minimum grade truncations (eg cutting of high grades) and cut-off grades are usually Material and should be stated. Where aggregate intercepts incorporate short lengths of high grade results and longer lengths of low grade results, the procedure used for such aggregation should be stated and some typical examples of such aggregations should be shown in detail. The assumptions used for any reporting of metal equivalent values should be clearly stated. 	<ul style="list-style-type: none"> All drill hole intersections are reported from 1 metre down hole samples (but may include 2m composite samples where noted). Intersection gold grade is calculated as length weighted average of sample grades. A minimum cut-off grade of 0.2g/t Au is applied to the reported intervals. Maximum internal dilution is 2m within a reported interval. No top cut-off grade has been applied. No metal equivalent reporting is used or applied. All intercepts greater than 2 GxM are reported in Tables B to G.
<p>Relationship between mineralisation widths and intercept lengths</p>	<ul style="list-style-type: none"> These relationships are particularly important in the reporting of Exploration Results. If the geometry of the mineralisation with respect to the drill hole angle is known, its nature should be reported. If it is not known and only the down hole lengths are reported, there should be a clear statement to this effect (eg down hole length, true width not known'). 	<p><u>Swift</u> Primary gold mineralisation at Swift (east) dips ~40° to the east with drilling oriented at approx. right angles to strike and at ~80° to dip implying true width of mineralisation to be ~98% of intercept width (this assumes a -60° drill hole dip at reported intercept depths).</p> <p>Primary gold mineralisation at Swift (west) is flat lying with drilling oriented at approx. right angles to strike and at ~120° to dip implying true width of mineralisation to be ~87% of intercept width (this assumes a -60° drill hole dip at reported intercept depths).</p> <p><u>Eagle</u> Primary gold mineralisation at Eagle dips ~45° to the east with drilling oriented at right angles to strike and at ~75° to dip implying true width of mineralisation to be ~97% of intercept width (this assumes a -60° drill hole dip at reported intercept depths).</p> <p><u>Goldfinch</u> Oxide/supergene mineralisation at Goldfinch is generally flat lying with the true width of mineralisation being ~87% of the intercept width. Primary gold mineralisation strikes north-northwest, and dips at ~40° to the east, with drilling oriented at right angles to strike and at an average of ~80° to the dip of mineralisation, implying true width of mineralisation to be ~98% of intercept width (this assumes a -60° drill hole dip at reported intercept depths).</p> <p><u>Shrike South</u> Primary gold mineralisation at Shrike South dips ~60° to the west with drilling oriented at approx. right angles to strike and at ~65° to dip implying true width of mineralisation to be ~91% of intercept width (this assumes a -55° drill hole dip at reported intercept depths).</p> <p><u>Thornbill West</u> The orientation of oxide/supergene mineralisation at Thornbill West is generally flat lying, so true widths of drill intercepts at depths <50m in drill holes drilled at -60° will be approximately 87%. Primary gold mineralisation at Thornbill West dips ~80° to the west with drilling oriented at right angles to strike and at ~40° to dip implying true width of mineralisation to be ~64% of intercept width (this assumes a -60° drill hole dip at reported intercept depths).</p> <p><u>Vigilant</u> Primary gold mineralisation at Vigilant dips ~40° to the east with drilling oriented at approx. right angles to strike and at ~85° to dip implying true width of mineralisation</p>

For personal use only

Criteria	JORC Code explanation	Commentary
		to be ~98% of intercept width (this assumes a -55° drill hole dip at reported intercept depths).
Diagrams	<ul style="list-style-type: none"> Appropriate maps and sections (with scales) and tabulations of intercepts should be included for any significant discovery being reported. These should include, but not be limited to a plan view of drill hole collar locations and appropriate sectional views. 	Appropriate drill hole plans, sections and tables of significant intercepts are included in this announcement.
Balanced reporting	<ul style="list-style-type: none"> Where comprehensive reporting of all Exploration Results is not practicable, representative reporting of both low and high grades and/or widths should be practiced to avoid misleading reporting of Exploration Results. 	Drilling results have been comprehensively reported in this announcement. All information considered material to the reader's understanding of the Exploration Results and data has been reported.
Other substantive exploration data	<ul style="list-style-type: none"> Other exploration data, if meaningful and material, should be reported including (but not limited to): geological observations; geophysical survey results; geochemical survey results; bulk samples – size and method of treatment; metallurgical test results; bulk density, groundwater, geotechnical and rock characteristics; potential deleterious or contaminating substances. 	There is no other exploration data which is considered material to the results to be reported in this announcement.
Further work	<ul style="list-style-type: none"> The nature and scale of planned further work (e.g. tests for lateral extensions or depth extensions or large-scale step-out drilling). Diagrams clearly highlighting the areas of possible extensions, including the main geological interpretations and future drilling areas, provided this information is not commercially sensitive. 	<p>Diagrams highlighting possible extensions to mineralisation are included in the body of the announcement and further drilling where appropriate will be undertaken to follow up the results reported.</p> <p>Metallurgical test work has been completed on all prospects referred to in this announcement except for Shrike South. Shrike South metallurgical sampling and Gravity/cyanide leach test work will be completed over the coming months.</p> <p>Maiden mineral resource estimates for Goldfinch, Thornbill West, and Shrike South are planned.</p>

For personal use only