

Rare Earths Footprint Expanded in Northern Tasmania

Engage with this announcement on our interactive [Investor Hub](#)

New exploration tenement EL14/2025, covering 165km² 30km north of ABx's Deep Leads rare earths resource, granted by Mineral Resources Tasmania

ABx Deep Leads – Rubble Mound Extension one of five projects that will share up to \$540,000 of funding as part of Round 12 of the Tasmanian Government Exploration Drilling Grant Initiative (EDGI)

Next exploration program planned for August 2026, incorporating AI tools to enhance target generation and exploration planning

ABx Group Limited (ASX: ABX) (ABx or the Company) is pleased to announce that Mineral Resources Tasmania has granted Exploration Licence EL14/2025 in northern Tasmania (Figure 1).

The new licence covers an area of 165 km² and is located around 30 kilometres north of ABx's Deep Leads rare earths resource. EL14/2025 further expands ABx's portfolio of tenements prospective for ionic adsorption clay rare earth element (REE) mineralisation in northern Tasmania to over 800 km².

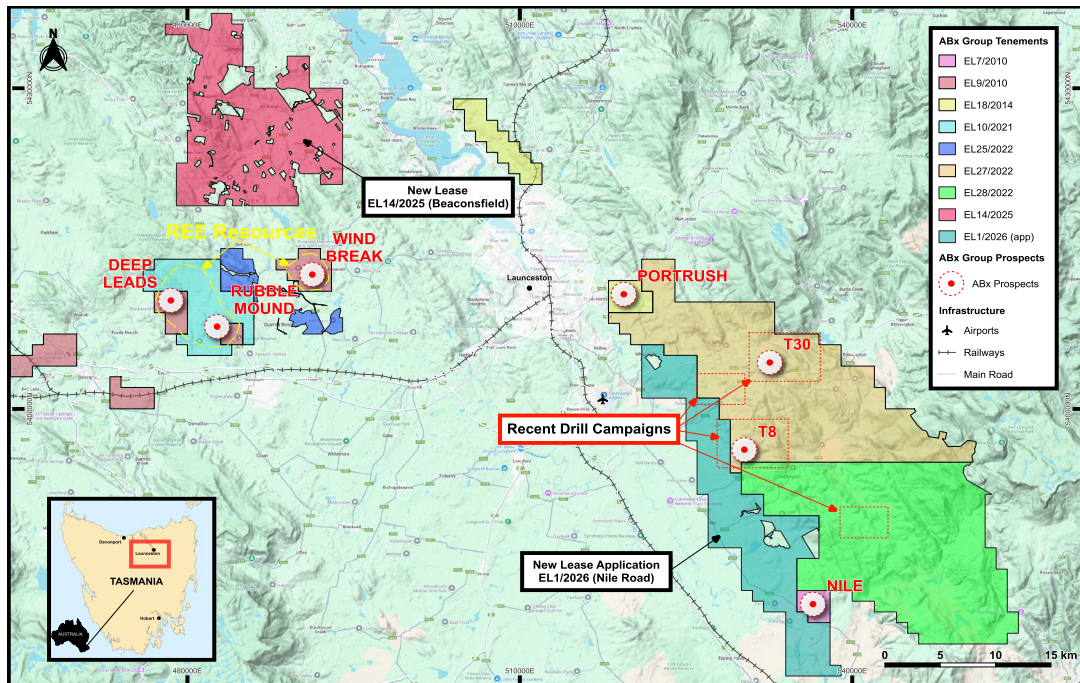


Figure 1: ABx tenements in northern Tasmania, showing of new Lease EL14/2025, 30km north of Deep Leads rare earths resource, and application EL1/2026, southeast of Launceston

For more information, please join ABx Group's interactive [Investor Hub](#)
ABx Group Limited

Suite 2, Level 11, 385 Bourke St, Melbourne VIC 3000, Australia
 ABN 14 139 494 885 | P: +61 3 9692 7222 | F: +61 2 9956 7355



For personal use only

Tasmanian Government Exploration Drilling Grant Initiative

Felix Ellis, Minister for Business, Industry and Resources in Tasmania, announced that the ABx Deep Leads - Rubble Mound Extension is one of five projects that would share in up to \$540,000 of funding as part of Round 12 of the Exploration Drilling Grant Initiative (EDGI). The EDGI program provides up to \$100,000 for direct drilling costs for successful applicants wanting to undertake mineral exploration.

ABx expects to shortly receive details regarding its successful application.

New Tenement Application

ABx has continued to refine its understanding of the geological controls associated with ionic adsorption clay rare earth mineralisation through exploration undertaken at Deep Leads, Rubble Mound and surrounding prospects.

Using its geological model and exploration technology, ABx has identified additional prospective areas to further expand its exploration footprint across northern Tasmania. The Company's application for EL1/2026, located immediately west of EL27/2022 and EL28/2022 along the prospective Nile Road dolerite foothills trend, remains in progress.

Exploration Planning Initiatives

ABx is currently preparing its next exploration program across its existing tenement portfolio, with field activities planned to commence in August 2026.

The Company is also utilising artificial intelligence (AI) tools to support exploration analysis and planning. Current applications include integrating ABx's exploration and metallurgical datasets with publicly available geological information to assist with target generation and prioritisation.

All ABx's rare earth discoveries using ABx's exploration technology in northern Tasmania have proven to be highly enriched in the two most sought after rare earths; dysprosium (Dy) and terbium (Tb), with the ratio of DyTb¹ to total rare earths exceeding 4%. ABx believes northern Tasmania is a globally significant rare earths province enriched in the six rare earths used to produce high-performance permanent magnets, namely neodymium (Nd), praseodymium (Pr), dysprosium (Dy), terbium (Tb), samarium (Sm) and gadolinium (Gd).

ABx believes these tools have the potential to improve exploration efficiency and support identification of additional prospective areas across its Tasmanian tenement portfolio.

Dr Mark Cooksey, Managing Director and CEO of ABx Group, commented:

"The grant of exploration tenement EL14/2025 and the awarding of the Exploration Drilling Grant Initiative for the Deep Leads – Rubble Mound Extension demonstrate the attractiveness of Tasmania as a mining jurisdiction and the excellent standing of ABx in Tasmania.

"These outcomes expand our rare earths exploration footprint in northern Tasmania and reflects the growing confidence we have in the broader prospectivity of the region.

¹ DyTb = Dy₂O₃ + Tb₄O₇

"The geological model developed through our exploration activities continues to identify new areas for assessment, with the EL1/2026 application representing another prospective target area generated from this work.

"We are excited by our progress in incorporating artificial intelligence tools into exploration strategy."

This announcement is approved for release by the board of ABx Group Limited.

Go to the ABx [Investor Hub](#) to watch a video of this announcement and ask any questions of management.

For further information please contact:

Dr Mark Cooksey

MD & CEO

ABx Group

+61 447 201 536

mcooksey@abxgroup.com.au

www.abxgroup.com.au

Media

Chapter One Advisors

David Tasker / Alex Baker

+61 433 112 936 / +61 432 801 745

dtasker@chapteroneadvisors.com.au /

abaker@chapteroneadvisors.com.au

About ABx Group Limited

ABx Group Limited (ABx) is a uniquely positioned Australian company delivering materials for a safer, cleaner future.

The three priority projects are:

- **Heavy rare earths:** Supplying light and heavy rare earths from Tasmania into Western supply chains
 - Maiden mixed rare earth carbonate produced and positive customer feedback received
 - Processing Options Analysis conducted in partnership with external experts
- **Clean fluorine chemical production:** Producing industrial chemicals from aluminium smelter by-product (ALCORE)
 - Continuous pilot plant under construction in Bell Bay, Tasmania
- **Near-term bauxite production:** Mining bauxite resources for the aluminium, cement and fertiliser industries
 - Agreements executed with Good Importing International for bauxite projects in Queensland and New South Wales, and \$2.7 million initial payment has been received
 - Approvals well advanced for DL130 bauxite project in northern Tasmania

ABx endorses best practices on agricultural land and strives to leave land and environment better than we find it. We only operate where welcomed.

Disclaimer Regarding Forward Looking Statements

This ASX announcement (Announcement) contains various forward-looking statements. All statements other than statements of historical fact are forward-looking statements. Forward-looking statements are inherently subject to uncertainties in that they may be affected by a variety of known and unknown risks, variables and factors which could cause actual values or results, performance, or achievements to differ materially from the expectations described in such forward-looking statements.

ABx does not give any assurance that the anticipated results, performance, or achievements expressed or implied in those forward-looking statements will be achieved.

Competent Persons Statement

The information in this report that relate to Exploration Information and Mineral Resources are based on information compiled by Ian Levy who is a member of The Australasian Institute of Mining and Metallurgy and the Australian Institute of Geoscientists. Mr Levy is a qualified geologist and a director of ABx Group Limited.

Mr Levy has sufficient experience, which is relevant to the style of mineralisation and type of deposit under consideration and to the activity, which he is undertaking to qualify as a Competent Person as defined in the 2012 Edition of the Australasian Code for Reporting of exploration Results, Mineral Resources and Ore Reserves. Mr Levy has consented in writing to the inclusion in this report of the Exploration Information in the form and context in which it appears.

For personal use only