

NEWS RELEASE

TSX: SXGC | ASX: SX2 | OTCQX: SXGCF



10 June 2026

SOUTHERN CROSS GOLD DRILLS 36.6 m @ 4.0 g/t Au and 1.0% Sb

Vancouver, Canada and Melbourne, Australia — [Southern Cross Gold Consolidated Ltd](#) (“SXGC”, “SX2” or the “Company”) (TSX:SXGC) (ASX: SX2) (OTCQX: SXGCF) (Frankfurt: MV3.F) announces results from seven drill holes from the Apollo and Apollo East prospect from the 100%-owned Sunday Creek Gold-Antimony Project in Victoria (Figures 1 to 5). Best results included **36.6 m @ 6.5 g/t AuEq (4.0 g/t Au, 1.0% Sb)** from 700.0 m in drill hole SDDSC202. The true thickness of the mineralized intervals is interpreted to be approximately 55% to 75% of the sampled thickness for all reported holes.

Four High Level Takeaways:

1. **Best new intersection of 36.6 m @ 6.5 g/t AuEq** (4.0 g/t Au, 1.0% Sb) from 700.0 m in SDDSC202, with high grade assays up to 493 g/t Au and 29.1% Sb, with two previously unmodelled high-grade zones adding to the Apollo East vein architecture.
2. **SDDSC214W1 returned the most easterly mineralization identified within the main drill area to date** (Figure 3), expanding Apollo East a further 20 m east with intersections on new vein sets including 0.5 m @ 251.4 g/t AuEq (232.0 g/t Au, 8.1% Sb) from 605.2 m and individual assays up to 362.0 g/t Au.
3. **Shallowest Apollo East results to date in SDDSC217**, a ~97 m updip extension confirming strong antimony tenor near surface, with 0.1 m @ 130.6 g/t AuEq (55.8 g/t Au, 31.3% Sb) from 324.9 m.
4. **Mineralization continues to step out and grow at depth and along strike**, with seven assays exceeding 100 g/t Au and five exceeding 20% Sb across the holes reported, while eleven rigs and 67 pending holes continue the 200,000 m program to Q1 2027.

Michael Hudson, President & CEO states: “These seven holes continue to do what Sunday Creek does best, growing the system in every direction we test. SDDSC202 delivered a standout **36.6 m at 6.5 g/t AuEq** with high grade assays up to 493 g/t gold, while SDDSC214W1 has pushed mineralization to the most easterly position yet identified anywhere on the property, opening up new ground at Apollo East. The shallow, antimony-rich results up to 31.3% Sb in SDDSC217 are equally important, confirming strong critical-metal tenor close to surface. With eleven rigs turning and 67 holes pending, we are only accelerating as we drive toward defining the full extent of this exceptional gold-antimony system.”

For Those Who Like the Details - Highlights:

- **SDDSC202 (Apollo East)** – drilled east to west and targeted the Apollo East prospect, intersecting 9 vein sets and 6 high-grade veins, of which **2 were previously not recognised or modelled**.
 - **0.2 m @ 58.6 g/t AuEq** (34.9 g/t Au, 9.9% Sb) from 538.8 m
 - **36.6 m @ 6.5 g/t AuEq** (4.0 g/t Au, 1.0% Sb) from 700.0 m, including:
 - **2.7 m @ 34.0 g/t AuEq** (18.4 g/t Au, 6.5% Sb) from 703.0 m
 - **1.5 m @ 27.3 g/t AuEq** (25.2 g/t Au, 0.9% Sb) from 712.1 m
 - **0.1 m @ 502.3 g/t AuEq** (493.0 g/t Au, 3.9% Sb) from 778.1 m
 - **1.3 m @ 30.6 g/t AuEq** (14.9 g/t Au, 6.6% Sb) from 894.3 m, a 50 m step down from SDDSC145
 - Individual assays included 493.0 g/t Au, 132.0 g/t Au, 106.0 g/t Au with 25.70% Sb, and 29.10% Sb.
- **SDDSC214 & SDDSC214W1 (Apollo)** drilled east to west and targeted the Apollo East and the deeper portions of the Apollo prospect, a daughter hole SDDSC214W1 was completed to achieve appropriate drillhole spacing in Apollo Deeps intersecting 4 vein sets and 3 high-grade vein sets, of which **2 were previously not recognised or modelled**, expanding Apollo East 20 m east
 - **0.5 m @ 251.4 g/t AuEq** (232.0 g/t Au, 8.1% Sb) from 605.2 m
 - **1.2 m @ 17.8 g/t AuEq** (13.9 g/t Au, 1.7% Sb) from 596.3 m
 - **12.1 m @ 4.0 g/t AuEq** (3.5 g/t Au, 0.2% Sb) from 634.6 m, including:
 - 1.6 m @ 24.2 g/t AuEq (22.9 g/t Au, 0.5% Sb)
 - **2.2 m @ 45.0 g/t AuEq** (44.9 g/t Au, 0.0% Sb) from 991.9 m, including:
 - 0.2 m @ 362.3 g/t AuEq (362.0 g/t Au)
 - Individual assays included 362.0 g/t Au, 232.0 g/t Au with 8.11% Sb, and 207.0 g/t Au.
- **SDDSC217 (Apollo East)** was drilled east to west and targeted the shallow upper portion of Apollo East. These results are the **shallowest Apollo East results to date** and represent a **100 m updip extension**
 - **0.9 m @ 31.0 g/t AuEq** (12.6 g/t Au, 7.7% Sb) from 312.3 m, including:
 - 0.3 m @ 84.9 g/t AuEq (33.3 g/t Au, 21.6% Sb)
 - **0.1 m @ 130.6 g/t AuEq** (55.8 g/t Au, 31.3% Sb) from 324.9 m
- **SDDSC212 (Apollo East)** – drilled east to west to target upper Apollo and to provide control to up-dip extensions of Apollo East. Better results included:
 - **3.0 m @ 2.1 g/t AuEq** (1.6 g/t Au, 0.2% Sb) from 432.0 m
- **SDDSC204 (Apollo Deeps)** – drilled east to west and targeted down-dip extension to Apollo Deeps **50 metres below the current exploration target boundaries**:
 - **1.3 m @ 4.5 g/t AuEq** (4.4 g/t Au, 0.0% Sb) from 1,095.5 m
 - **4.5 m @ 1.6 g/t AuEq** (1.5 g/t Au, 0.0% Sb) from 1,102.0 m
- **SDDSC209 (Apollo East)** – south-to-north control hole, eastern side of the Goliath fault
 - Drilled to validate orientation and offsets in the geological model; dyke intersected several times downhole, providing important control for the eastern margin of the Apollo system.

Drill Hole Discussion

Seven drill holes are reported here targeting the Apollo and Apollo East prospects, drilled in an east-to-west orientation to optimize high intersection angles across the steeply dipping vein architecture, with one south-to-north oriented control hole (SDDSC209) drilled to validate geological controls on the eastern side of the Goliath fault.

Seven (7) individual assays exceeding 100 g/t Au and five (5) individual Sb assays greater than 20% Sb were intersected amongst the seven holes reported showing the continued high-grade growth in Apollo as the exploration continues to step out and expand the known boundaries of the mineralization.

SDDSC202

SDDSC202 was drilled east to west and targeted the Apollo East prospect, intersecting 9 vein sets and 6 high-grade veins, of which **2 were previously not recognised or modelled**.

4 individual assays exceeded 100 g/t Au and 3 individual assays exceeded 20% antimony:

- **106.0 g/t Au & 25.70% Sb** over 0.18 m from 704.87 m
- **132.0 g/t Au & 2.26% Sb** over 0.18 m from 712.67 m
- **493.0 g/t Au & 3.89% Sb** over 0.10 m from 778.10 m
- **102.0 g/t Au & 15.00% Sb** over 0.13 m from 785.64 m
- 91.5 g/t Au & **29.10% Sb** over 0.28 m from 704.59 m
- 81.5 g/t Au & over 0.22 m from 894.64 m – a 50 m step down from [SDDSC145 0.5 m @ 2544.5 g/t AuEq \(2541.9 g/t Au, 1.1% Sb\) from 876.4 m December 9th 2024](#))

Selected composite highlights include:

- **0.2 m @ 58.6 g/t AuEq** (34.9 g/t Au, 9.9% Sb) from 538.8 m
- **1.5 m @ 8.7 g/t AuEq** (7.6 g/t Au, 0.4% Sb) from 690.6 m
- **36.6 m @ 6.5 g/t AuEq** (4.0 g/t Au, 1.0% Sb) from 700.0 m
 - Including **2.7 m @ 34.0 g/t AuEq** (18.4 g/t Au, 6.5% Sb) from 703.0 m
 - Including **1.5 m @ 27.3 g/t AuEq** (25.2 g/t Au, 0.9% Sb) from 712.1 m
 - Including **2.4 m @ 12.3 g/t AuEq** (9.4 g/t Au, 1.2% Sb) from 723.6 m
- **2.3 m @ 5.5 g/t AuEq** (4.9 g/t Au, 0.2% Sb) from 750.5 m
- **0.1 m @ 502.3 g/t AuEq** (493.0 g/t Au, 3.9% Sb) from 778.1 m
- **1.5 m @ 12.8 g/t AuEq** (9.2 g/t Au, 1.5% Sb) from 784.3 m
 - Including **0.8 m @ 22.9 g/t AuEq** (16.4 g/t Au, 2.7% Sb) from 785.0 m
- **2.1 m @ 11.9 g/t AuEq** (5.0 g/t Au, 2.9% Sb) from 789.0 m
- **1.3 m @ 30.6 g/t AuEq** (14.9 g/t Au, 6.6% Sb) from 894.3 m
 - Including **0.9 m @ 42.4 g/t AuEq** (20.4 g/t Au, 9.2% Sb) from 894.6 m

SDDSC204

SDDSC204 was drilled east to west and targeted down-dip extension to Apollo Deeps 50 metres below the current exploration target boundaries ([Exploration Target March 3rd 2025](#)). This drillhole intersected a faulted block of altered sediment and dyke which reduced the potential mineralization window within the drillhole. SDDSC0204 did however provide valuable geological controls at depth and additional drillhole locations will be utilised for future Apollo Deeps drilling to allow for efficient testing. Selected composite highlights include:

- **1.3 m @ 4.5 g/t AuEq** (4.4 g/t Au, 0.0% Sb) from 1095.5 m
- **4.5 m @ 1.6 g/t AuEq** (1.5 g/t Au, 0.0% Sb) from 1102.0 m

SDDSC209

SDDSC209 was drilled south to north as a control hole on the eastern side of the Goliath fault, designed to test orientation and offsets used in the geological model rather than to deliver a primary mineralised intersection. Dyke was intersected several times downhole providing important geological control for the eastern margin of the Apollo system.

SDDSC212

SDDSC212 was drilled east to west to target upper Apollo and to provide control to up-dip extensions of Apollo East. Selected composite highlights include:

- **3.0 m @ 2.1 g/t AuEq** (1.6 g/t Au, 0.2% Sb) from 432.0 m

SDDSC214 & SDDSC214w1

SDDSC214 was drilled east to west and targeted the Apollo East and the deeper portions of the Apollo prospect, a daughter hole SDDSC214W1 was completed to achieve appropriate drillhole spacing in Apollo Deeps intersecting 4 vein sets and 3 high-grade veins, of which **2 were previously not recognised or modelled**, expanding Apollo East 20 m east. Three individual assays exceeded 100 g/t Au:

- **232.0 g/t Au** & 8.11% Sb over 0.47 m from 605.18 m
- **207.0 g/t Au** & 0.08% Sb over 0.14 m from 992.72 m
- **362.0 g/t Au** & 0.13% Sb over 0.18 m from 993.97 m

Selected composite highlights include:

- **1.2 m @ 17.8 g/t AuEq** (13.9 g/t Au, 1.7% Sb) from 596.3 m
 - Including **0.2 m @ 87.2 g/t AuEq** (71.2 g/t Au, 6.7% Sb) from 596.3 m
- **0.5 m @ 251.4 g/t AuEq** (232.0 g/t Au, 8.1% Sb) from 605.2 m
- **12.1 m @ 4.0 g/t AuEq** (3.5 g/t Au, 0.2% Sb) from 634.6 m
 - Including **1.6 m @ 24.2 g/t AuEq** (22.9 g/t Au, 0.5% Sb) from 634.6 m
- **2.2 m @ 45.0 g/t AuEq** (44.9 g/t Au, 0.0% Sb) from 991.9 m
 - Including **0.5 m @ 64.5 g/t AuEq** (64.4 g/t Au, 0.0% Sb) from 992.3 m
 - Including **0.2 m @ 362.3 g/t AuEq** (362.0 g/t Au, 0.1% Sb) from 994.0 m

SDDSC217

SDDSC217 was drilled east to west and targeted the shallow upper portion of Apollo East. These results are the shallowest Apollo East results to date and represent a 100 m updip extension of the A157 veinset and SDDSC179 ([0.4 m @ 14.0 g/t AuEq \(12.4 g/t Au, 0.7% Sb\) from 368.3 m December 17th 2025](#))

Two individual assays exceeded 20% antimony, highlighting the high antimony presence in the shallow part of the system, including:

- **21.60% Sb** & 33.3 g/t Au over 0.33 m from 312.28 m
- **31.30% Sb** & 55.8 g/t Au over 0.13 m from 324.90 m

Selected composite highlights include:

- **0.9 m @ 31.0 g/t AuEq** (12.6 g/t Au, 7.7% Sb) from 312.3 m
 - Including **0.3 m @ 84.9 g/t AuEq** (33.3 g/t Au, 21.6% Sb) from 312.3 m

- **0.1 m @ 130.6 g/t AuEq** (55.8 g/t Au, 31.3% Sb) from 324.9 m

Pending Results and Update

Eleven drill rigs are currently operational on the Sunday Creek project. Results are pending from **67 holes currently being processed and analyzed** including eleven holes that are actively being drilled and two abandoned hole (Figure 2). The Company continues its ongoing 200,000 m drill program through to Q1 2027.

About Sunday Creek

The Sunday Creek epizonal-style gold project is located 60 km north of Melbourne within 16,900 hectares ("Ha") of granted exploration tenements. SXGC is also the freehold landholder of 1,392 Ha that forms the key portion in and around the main drilled area at the Sunday Creek Project.

Gold and antimony form in a relay of vein sets that cut across a steeply dipping zone of intensely altered rocks (the "host"). These vein sets are like a "Golden Ladder" structure where the main host extends between the side rails deep into the earth, with multiple cross-cutting vein sets that host the gold forming the rungs. At Apollo, Golden Dyke and Rising Sun these individual 'rungs' have been defined over 600 m depth extent from surface to over 1,200 m below surface, are 2.5 m to 3.5 m wide (median widths) (and up to 10 m), and 20 m to 100 m in strike.

Cumulatively, 262 drill holes for 123,974.14 m have been reported from Sunday Creek since late 2020. This amount includes five holes for 929 m that have been drilled for geotechnical purposes and 22 holes for 2,972.92m that were abandoned due to deviation or hole conditions. Fourteen drill holes for 2,383 m have been reported regionally outside of the main Sunday Creek drill area with eleven additional regional holes currently being processed. A total of 64 historic drill holes for 5,599 m were completed from the late 1960s to 2008. **The project now contains a total of ninety-six (96) composite intersections exceeding 100 g/t Au and eighty (80) composite intersections between 50 g/t and 100 g/t Au, and one-hundred and twelve (112) composite intersections exceeding 10% Sb by applying a 1 m (down hole length) @ 5 g/t AuEq lower cut.**

Southern Cross Gold's systematic drill program is strategically targeting these significant vein formations, which are currently defined over 1,550 m strike of the host dyke/sediment ("rails of the ladder") from Christina to Apollo prospects, of which approximately 650 m has been more intensively drill tested (Golden Dyke to Apollo). At least 115 'rungs' have been defined to date, defined by high-grade intercepts (20 g/t Au to >7,330 g/t Au) along with lower grade edges. Ongoing step-out drilling is aiming to uncover the potential extent of this mineralized system (Figure 2).

Geologically, the project is located within the Melbourne Structural Zone in the Lachlan Fold Belt. The regional host to the Sunday Creek mineralization is an interbedded turbidite sequence of siltstones and minor sandstones metamorphosed to sub-greenschist facies and folded into a set of open north-west trending folds.

Further Information

Further discussion and analysis of the Sunday Creek project is available through the interactive Vrify 3D animations, presentations and videos all available on the SXGC website. These data, along with an interview on these results with President & CEO/Managing Director Michael Hudson can be viewed at www.southerncrossgold.com.

No upper gold grade cut is applied in the averaging and intervals are reported as drill thickness. However, during future Mineral Resource studies, the requirement for assay top cutting will be assessed. The Company notes that due to rounding of assay results to one significant figure, minor variations in calculated composite grades may occur.

Figures 1 to 5 show project location, plan and longitudinal views of drill results reported here and Tables 1 to 3 provide collar and assay data. The true thickness of the mineralized intervals reported individually as estimated true widths ("ETW"), otherwise they are interpreted to be approximately 55% to 75% of the sampled thickness for other reported holes. Lower grades were cut at 1.0 g/t AuEq lower cutoff over a maximum

width of 2 m with higher grades cut at 5.0 g/t AuEq lower cutoff over a maximum of 1 m width.

Critical Metal Epizonal Gold-Antimony Deposits

Sunday Creek (Figure 5) is an epizonal gold-antimony deposit formed in the late Devonian (like Fosterville, Costerfield and Redcastle), 60 million years later than mesozonal gold systems formed in Victoria (for example Ballarat and Bendigo). Epizonal deposits are a form of orogenic gold deposit classified according to their depth of formation: epizonal (<6 km), mesozonal (6 km to 12 km) and hypozonal (>12 km).

Epizonal deposits in Victoria often have associated high levels of the critical metal, antimony, and Sunday Creek is no exception. China claims a 56 per cent share of global mined supplies of antimony, according to a 2023 European Union study. Antimony features highly on the critical minerals lists of many countries including Australia, the United States of America, Canada, Japan and the European Union. Australia ranks seventh for antimony production despite all production coming from a single mine at Costerfield in Victoria, located nearby to all SXGC projects. Antimony alloys with lead and tin which results in improved properties for solders, munitions, bearings and batteries. Antimony is a prominent additive for halogen-containing flame retardants. Adequate supplies of antimony are critical to the world's energy transition, and to the high-tech industry, especially the semi-conductor and defence sectors where it is a critical additive to primers in munitions.

Antimony represents approximately 21% to 24% in situ recoverable value of Sunday Creek at an AuEq of 2.39 ratio.

About Southern Cross Gold Consolidated Limited (TSX: SXGC) (ASX: SX2) (OTCQX: SXGCF) (Frankfurt: MV3.F)

Southern Cross Gold Consolidated Ltd. (TSX: SXGC, ASX: SX2, OTCQX: SXGCF), is defining a leading gold-antimony project at the Sunday Creek Gold-Antimony Project, located 60 km north of Melbourne. Sunday Creek is a significant gold and antimony drill discovery in a Tier 1 location, with high-grade drill results including 96 composite intersections exceeding 100 g/t Au from 129,573 km of drilling. The mineralization follows a "Golden Ladder" structure over 12 km of strike length, with structures tested from surface to 1,100 m depth.

Sunday Creek's strategic value is enhanced by its dual-metal profile. The Company has a critical mineral the Western world needs. This has gained increased significance following China's export restrictions on antimony, a critical metal for defence and semiconductor applications. Southern Cross' inclusion in the US Defense Industrial Base Consortium (DIBC) and Australia's AUKUS-related legislative changes position it as a potential key Western antimony supplier.

Technical fundamentals further strengthen the investment case, with preliminary metallurgical work showing non-refractory mineralization suitable for conventional processing and gold recoveries of 93% to 98% through gravity and flotation.

With a strong cash position, 1,392 Ha of strategic freehold land ownership, and a large 200 km drill program planned through Q1 2027, SXGC is well-positioned to advance this globally significant gold-antimony discovery in a tier-one jurisdiction, delivering milestone by milestone.

- Ends -

For ASX Compliance: This announcement has been approved for release by the Board of Southern Cross Gold Consolidated Ltd.

For further information, please contact:

Mariana Bermudez – Corporate Secretary

mb@southerncrossgold.com or +1 604 685 9316

Executive Office

1305 – 1090 West Georgia Street Vancouver, BC, V6E 3V7, Canada

Nicholas Mead – Corporate Development

info@southerncrossgold.com.au or +61 415 153 122

Justin Mouchacca, Assistant Company Secretary,

jm@southerncrossgold.com.au or +61 3 8630 3321

Subsidiary Office

Level 21, 459 Collins Street, Melbourne, VIC, 3000, Australia

NI 43-101 Technical Background and Qualified Person

Kenneth Bush, Head of Exploration for SXGC, a Member of Australian Institute of Geoscientists and a Registered Professional Geologist in the fields of Mining and Exploration (#10315), is the Qualified Person as defined by the NI 43-101. They have prepared, reviewed, verified and approved the technical contents of this release.

Analytical samples are transported to the Bendigo facility of On Site Laboratory Services (“On Site”) which operates under both an ISO 9001 and NATA quality systems. Samples were prepared and analyzed for gold using the fire assay technique (PE01S method; 25 gram charge), followed by measuring the gold in solution with flame AAS equipment. Samples for multi-element analysis (BM011 and over-range methods as required) use aqua regia digestion and ICP-MS analysis. The QA/QC program of Southern Cross Gold consists of the systematic insertion of certified standards of known gold content, blanks within interpreted mineralized rock and quarter core duplicates. In addition, On Site inserts blanks and standards into the analytical process.

SXGC considers that both gold and antimony that are included in the gold equivalent calculation (“AuEq”) have reasonable potential to be recovered and sold at Sunday Creek, given current geochemical understanding, historic production statistics and geologically analogous mining operations. Historically, ore from Sunday Creek was treated onsite or shipped to the Costerfield mine, located 54 km to the northwest of the project, for processing during WW1. The Costerfield mine corridor, now owned by Alkane Resources (previously Mandalay Resources) contains two million ounces of equivalent gold (Mandalay Resources Q3 2021 Results), and in 2020 was the sixth highest-grade global underground mine and a top 5 global producer of antimony.

SXGC considers that it is appropriate to adopt the same gold equivalent variables as Mandalay Resources Ltd in its 2024 End of Year Mineral Reserves and Resources Press Release, dated February 20, 2025. The gold equivalence formula used by Mandalay Resources was calculated using Costerfield’s 2024 production costs, using a gold price of US\$2,500 per ounce, an antimony price of US\$19,000 per tonne and 2024 total year metal recoveries of 91% for gold and 92% for antimony, and is as follows:

$$AuEq = Au (g/t) + 2.39 \times Sb (\%)$$

Based on the latest Costerfield calculation and given the similar geological styles and historic toll treatment of Sunday Creek mineralization at Costerfield, SXGC considers that a $AuEq = Au (g/t) + 2.39 \times Sb (\%)$ is appropriate to use for the initial exploration targeting of gold-antimony mineralization at Sunday Creek.

JORC Competent Person Statement

Information in this announcement that relates to new exploration results contained in this report is based on information compiled by Mr Kenneth Bush a Member of Australian Institute of Geoscientists and a Registered Professional Geologist in the fields of Mining and Exploration (#10315). Mr Bush has sufficient experience relevant to the style of mineralization and type of deposit under consideration, and to the activities undertaken, to qualify as a Competent Person as defined in the 2012 Edition of the Joint Ore Reserves Committee (JORC) Australasian Code for Reporting of Exploration Results, Mineral Resources and Ore Reserves. Mr Bush is Head of Exploration of Southern Cross Gold Consolidated Limited and consents to the inclusion in the report of the matters based on their information in the form and context in which it appears.

Certain information in this announcement that relates to prior exploration results is extracted from the Independent Geologist’s Report dated 11 December 2024 which was issued with the consent of the Competent Person, Mr Steven Tambanis. The report is included in the Company’s prospectus dated 11 December 2024 and is available at www.asx.com.au under code “SX2”. The Company confirms that it is not aware of any new information or data that materially affects the information related to exploration results included in the original market announcement. The Company confirms that the form and context of the Competent Persons’ findings in relation to the report have not been materially modified from the original market announcement.

Certain information in this announcement also relates to prior drill hole exploration results, extracted from the following announcements, which are available to view on www.southerncrossgold.com:

- 4 October, 2022 [SDDSC046](#), 20 October, 2022 [SDDSC049](#), 5 September, 2023 [SDDSC077B](#), 12 October, 2023 [SDDL003 & 4](#), 23 October, 2023 [SDDSC082](#), 9 November, 2023 [SDDSC091](#), 14 December, 2023 [SDDSC092](#), 5 March, 2024 [SDDSC107](#), 30 May, 2024 [SDDSC117](#), 13 June, 2024 [SDDSC118](#), 5 September, 2024 [SDDSC130](#), 28 October, 2024 [SDDSC137W2](#), 28 November, 2024 [SDDSC141](#), 9 December, 2024 [SDDSC145](#), 18 December, 2024 [SDDSC129 & 144](#), 28 May, 2025 [SDDSC161](#), 16 June, 2025 [SDDSC162](#), 26 August, 2025 [SDDSC171](#), 8 September, 2025 [SDDSC170A](#),

The Company confirms that it is not aware of any new information or data that materially affects the information included in the original document/announcement and the Company confirms that the form and context in which the Competent Person’s findings are presented have not been materially modified from the original market announcement.

Forward-Looking Statement

This news release contains forward-looking statements. Forward-looking statements involve known and unknown risks, uncertainties and assumptions and accordingly, actual results and future events could differ materially from those expressed or implied in such statements. You are hence cautioned not to place undue reliance on forward-looking statements. All statements other than statements of present or historical fact are forward-looking statements. Forward-looking statements include words or expressions such as “proposed”, “will”, “subject to”, “near future”, “in the event”, “would”, “expect”, “prepared to” and other similar words or expressions. Factors that could cause future results or events to differ materially from current expectations expressed or implied by the forward-looking statements include general business, economic, competitive, political, social uncertainties; the state of capital markets, unforeseen events, developments, or factors causing any of the expectations, assumptions, and other factors ultimately being inaccurate or irrelevant; and other risks described in the Company’s documents filed with Canadian or Australian (under code SX2) securities regulatory authorities. You can find further information with respect to these and other risks in filings made by the Company with the securities regulatory authorities in Canada or Australia (under code SX2), as applicable, and available for the Company in Canada at www.sedarplus.ca or in Australia at www.asx.com.au (under code SX2). Documents are also available at www.southerncrossgold.com. The Company disclaims any obligation to update or revise these forward-looking statements, except as required by applicable law.

For personal use only

Figure 1: Sunday Creek plan view showing selected results from holes SDDSC202, SDDSC204, SDDSC209, SDDSC212, SDDSC214, SDDSC214W1 and SDDSC217 reported here (dark blue highlighted box, black trace), with selected prior reported drill holes.

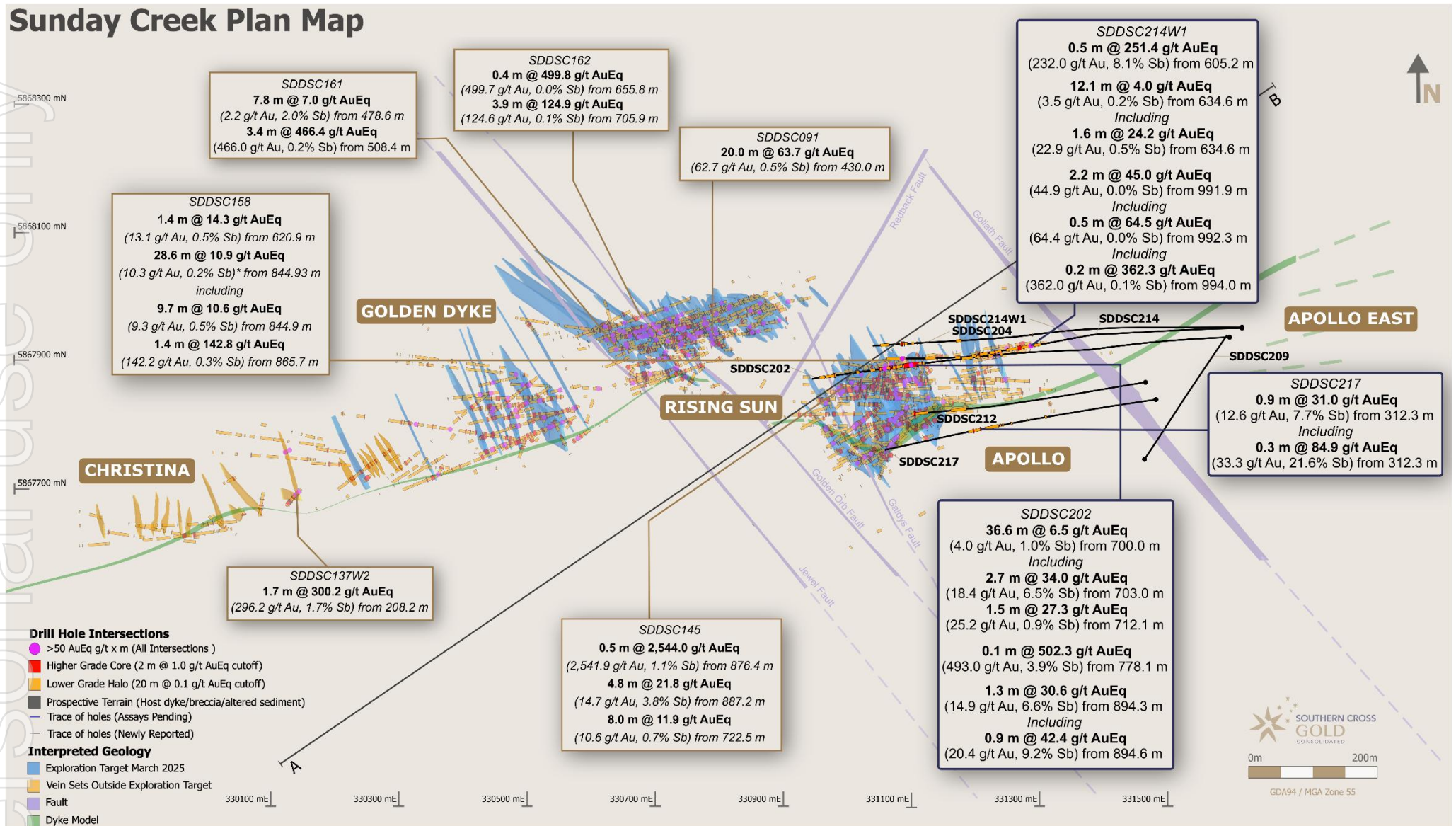


Figure 2: Sunday Creek plan view showing selected drill hole traces from holes SDDSC202, SDDSC204, SDDSC209, SDDSC212, SDDSC214, SDDSC214W1 and SDDSC217 reported here (black trace), with prior reported drill holes (grey trace) and currently drilling and assays pending hole traces (dark blue).

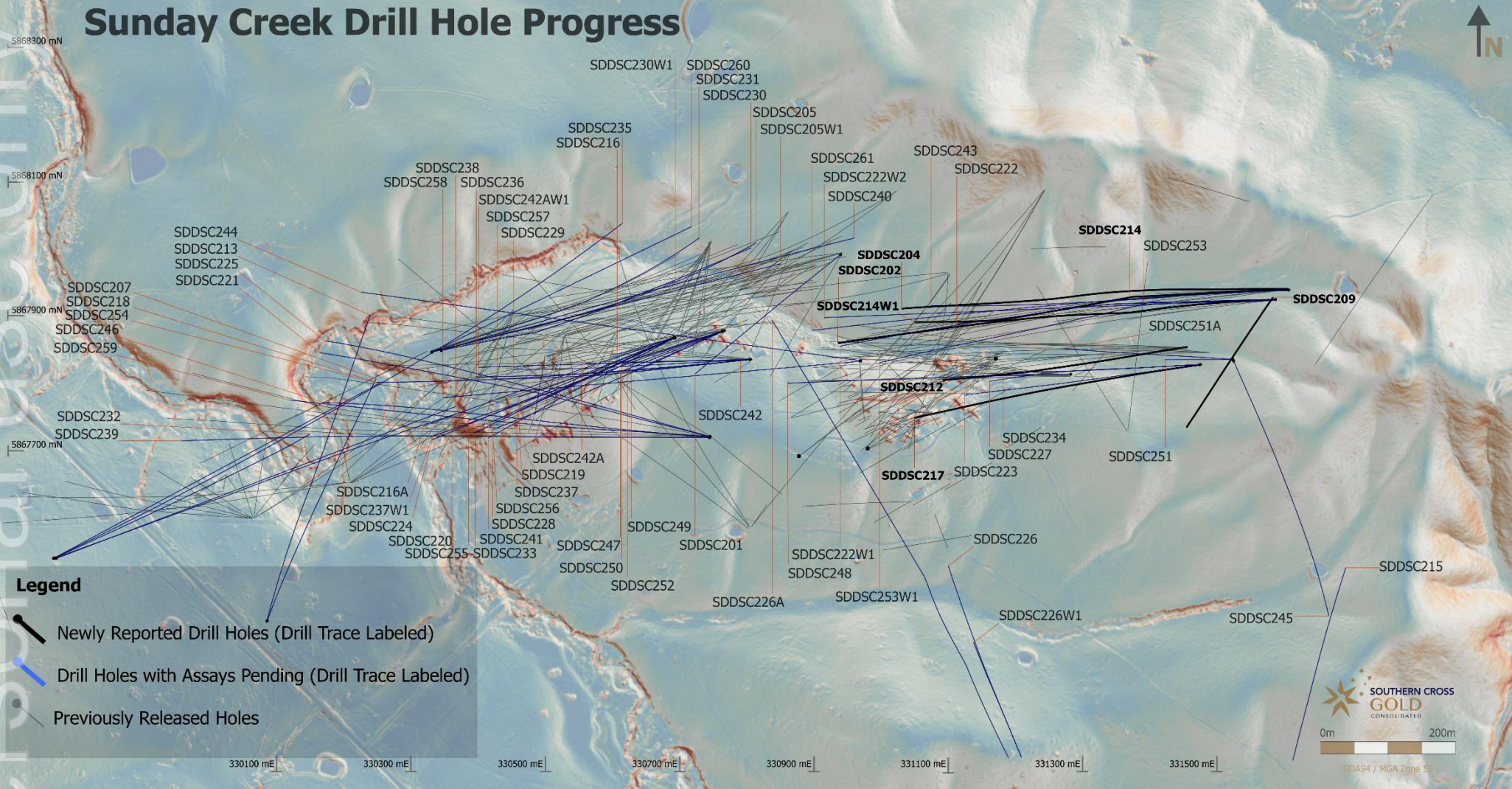


Figure 3: Sunday Creek longitudinal section across A-B in the plane of the dyke breccia/alterd sediment host looking towards the NW (striking 56 degrees) indicating mineralized vein sets. Showing holes SDDSC202, SDDSC204, SDDSC209, SDDSC212, SDDSC214, SDDSC214W1 and SDDSC217 reported here (dark blue highlighted box, black trace), with selected intersections and prior reported drill holes. The vertical extents of the vein sets are limited by proximity to drill hole pierce points.

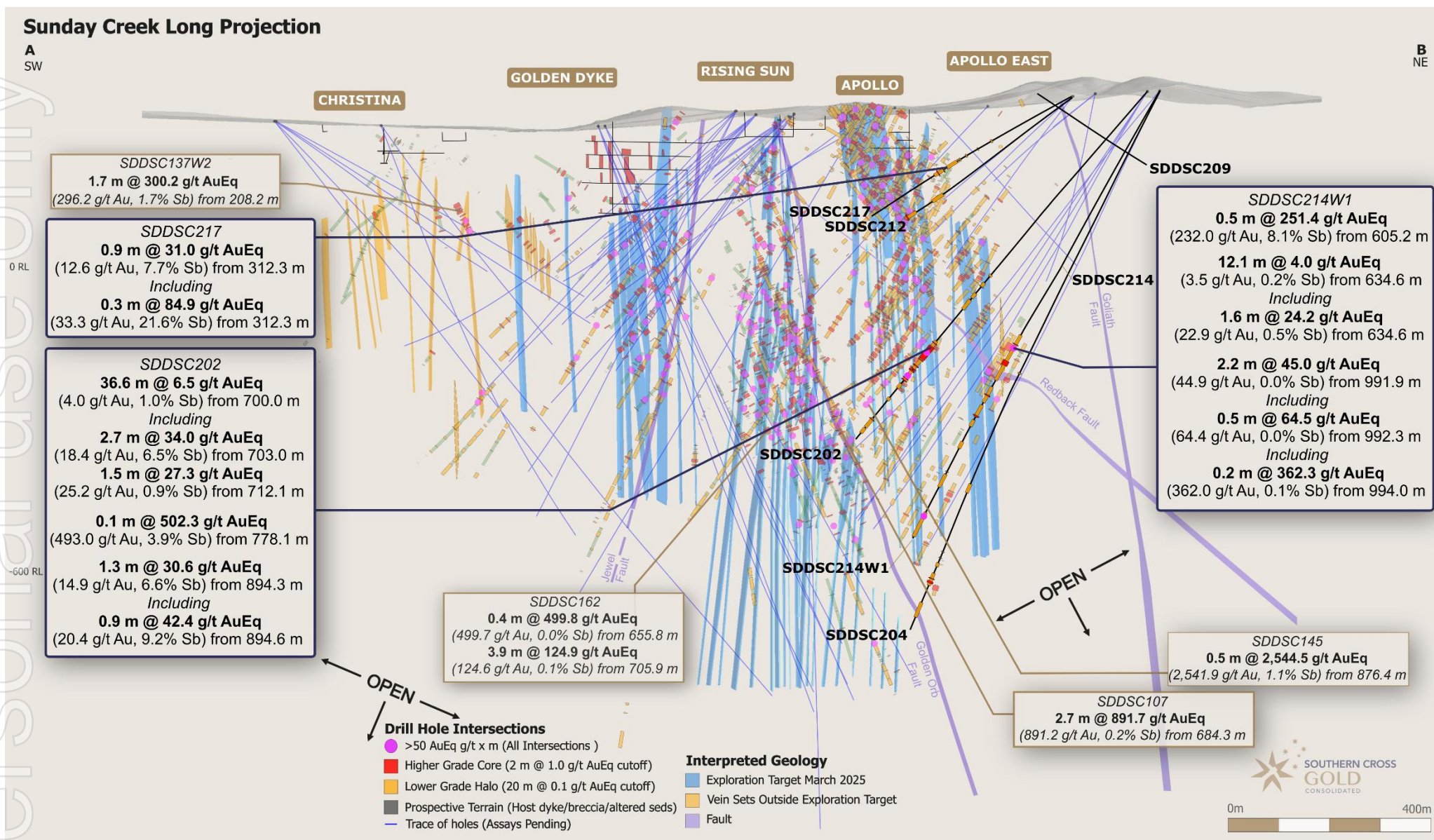


Figure 4: Sunday Creek regional plan view showing soil sampling, structural framework, regional historic epizonal gold mining areas and broad regional areas tested by 12 holes for 2,383 m drill program. The regional drill areas are at Tonstal, Consols and Leviathan located 4,000 m to 7,500 m along strike from the main drill area at Golden Dyke-Apollo. Map in GDA94/ MGA Zone 55.

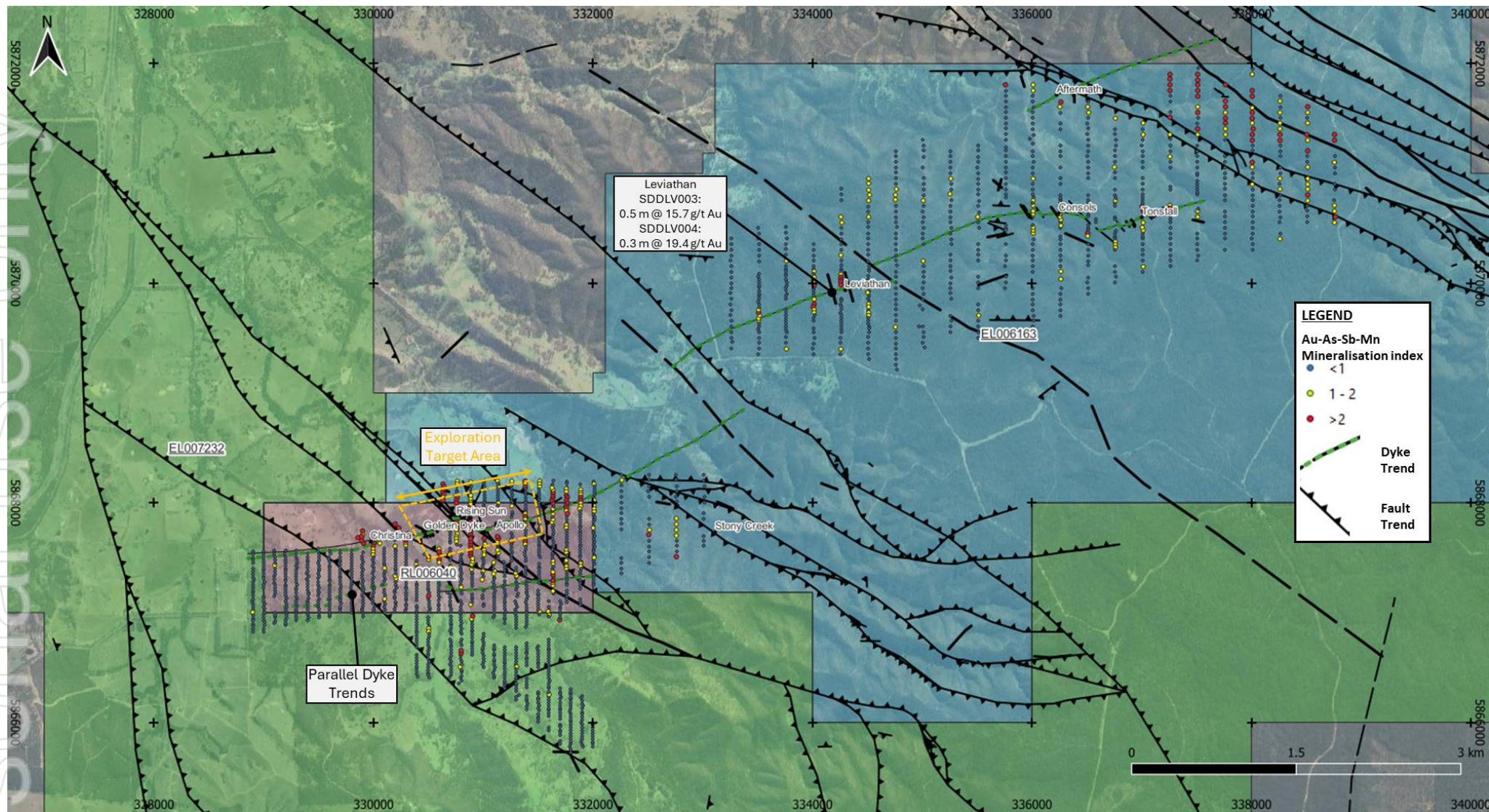


Figure 5: Location of the Sunday Creek project, along with the 100% owned Redcastle Gold-Antimony Project

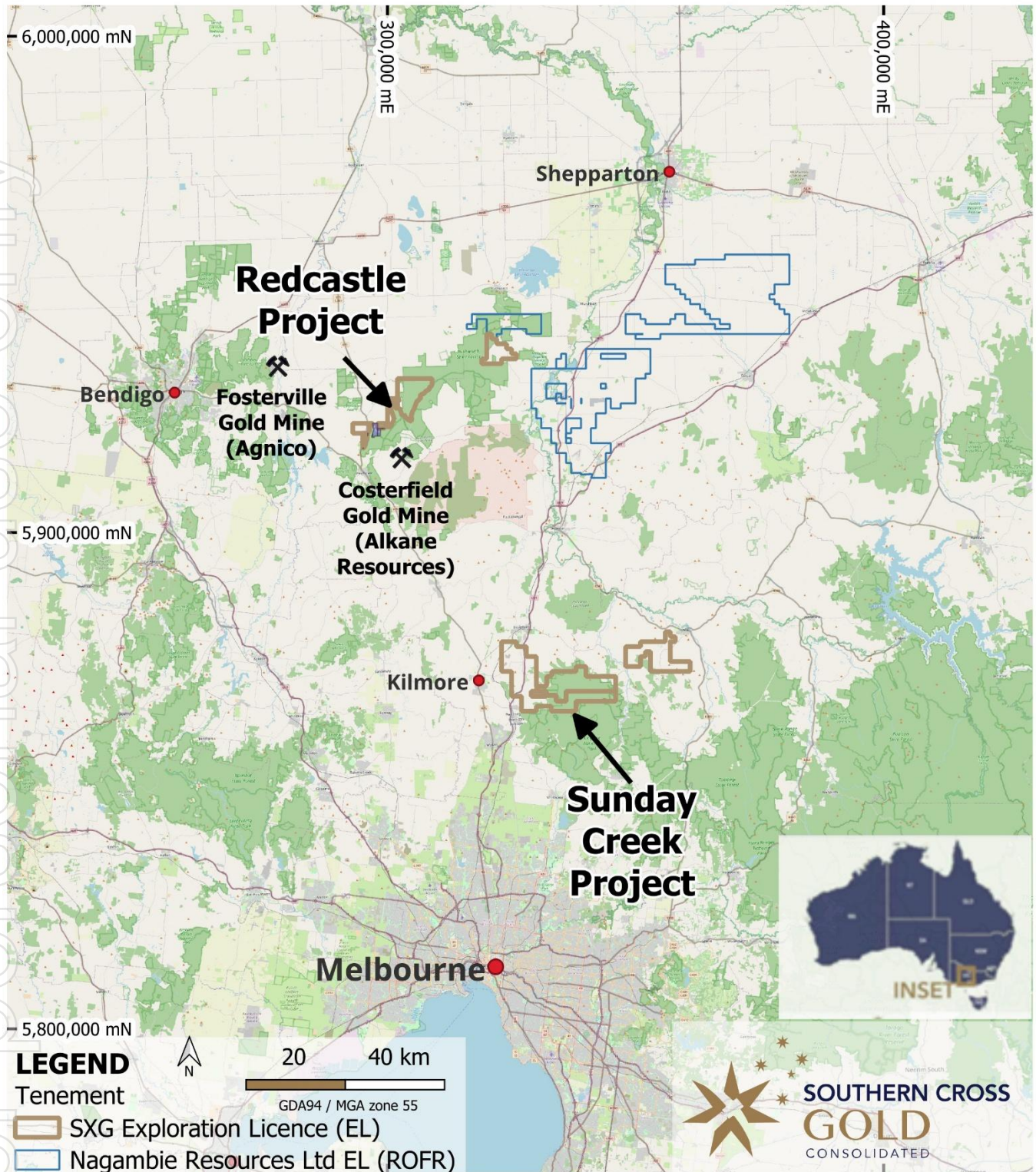


Table 1: Drill collar summary table for recent drill holes in progress.

This Release							
Hole ID	Depth (m)	Prospect	East GDA94 Z55	North GDA94 Z55	Elevation (m)	Dip	Azimuth GDA94 Z55
SDDSC202	947.76	Apollo	331596.2	5867936.6	345.6	-43.4	266.9
SDDSC204	1208.3	Apollo	331615.6	5867952.4	346.5	-58.2	270.4
SDDSC209	271.58	Apollo East	331463.3	5867746.4	341.2	-30.5	34
SDDSC212	438.7	Apollo East	331464.9	5867866.4	333.2	-33.2	261.3
SDDSC214	431.6	Apollo	331615.6	5867951.1	346.94	-55.2	268.9
SDDSC214W1	1043.5	Apollo	331615.6	5867951.1	346.94	-55.2	268.9
SDDSC217	490.7	Apollo East	331481.2	5867839.5	335.4	-25	261.9
Currently being processed and analyzed							
Hole ID	Depth (m)	Prospect	East GDA94 Z55	North GDA94 Z55	Elevation (m)	Dip	Azimuth GDA94 Z55
SDDSC201	321.4	Rising Sun	330948.3	5868003.4	313.3	-28.9	231.3
SDDSC205	1211.4	Rising Sun	330339.8	5867858.5	276.8	-64.6	75.8
SDDSC207	584.25	Christina	330094.8	5867459.3	278.3	-48.8	20.7
SDDSC213	941.44	Golden Dyke	330094.2	5867458.6	278.3	-62.6	14.6
SDDSC215	476.39	Regional	331603.6	5867183.7	304.9	-38.2	15.4
SDDSC216A	572.36	Golden Dyke	330701.2	5867880.5	299.6	-46.1	250.6
SDDSC218	796.99	Golden Dyke	330813.6	5867847.5	301.1	-47.6	265.5
SDDSC219	392.2	Golden Dyke	330701.5	5867880.3	299.6	-49.2	247.8
SDDSC220	716.7	Christina	329779.1	5867552.6	286.59	-26.5	70.5
SDDSC221	926.54	Golden Dyke	330754.1	5867733	307	-50.6	285.3
SDDSC222	792.29	Apollo	331596.1	5867936.9	345.43	-51.5	267.7
SDDSC222W1	1065.5	Apollo	331596.1	5867936.9	345.43	-51.5	267.7
SDDSC223	435.25	Apollo East	331483	5867839.8	335.72	-33.9	262.2
SDDSC224	496.9	Golden Dyke	330700.6	5867879.9	299.62	-36.8	246.6
SDDSC225	992.82	Christina	330754.5	5867733	306.93	-52.9	284.8
SDDSC226	826.1	Rising Sun	331276.9	5867121.1	289.09	-56.4	336.5
SDDSC226A	In Progress plan 1900 m	Rising Sun	331278.1	5867112.6	289.16	-56.8	330.4
SDDSC226W1	603.9	Rising Sun	331276.9	5867121.1	289.09	-56.4	336.5
SDDSC227	412	Apollo East	331483.8	5867840.3	335.83	-36.6	266.5
SDDSC228	447.8	Golden Dyke	330700.9	5867880.2	299.48	-47.1	245.2
SDDSC229	541.8	Golden Dyke	330813.6	5867847.5	301.1	-48.5	266.9
SDDSC230	1129.3	Rising Sun	330353.9	5867861.1	277.2	-65.1	77
SDDSC230W1	1415	Rising Sun	330353.9	5867861.1	277.2	-65.1	77
SDDSC231	1196.4	Rising Sun	330339.6	5867858.6	277	-70.3	71.1
SDDSC232	516.5	Christina	329777.6	5867552.2	286.76	-34.1	65.7
SDDSC233	445.94	Golden Dyke	330700.8	5867880.1	299.55	-40.7	245
SDDSC234	449	Apollo East	331484.5	5867840.3	335.75	-46.1	266.1
SDDSC235	In Progress plan 1500 m	Christina	329776.6	5867552	286.8	-44.7	63.2
SDDSC236	650.1	Golden Dyke	330813.6	5867847.5	301.1	-49.4	263.6
SDDSC237	359	Golden Dyke	330700.4	5867880.1	299.67	-43.2	245.7
SDDSC237W1	510.47	Golden Dyke	330700.4	5867880.1	299.67	-43.2	299.7
SDDSC239	915.63	Golden Dyke	330753.1	5867731.5	306.9	-31	270.2

Hole ID	Depth (m)	Prospect	East GDA94 Z55	North GDA94 Z55	Elevation (m)	Dip	Azimuth GDA94 Z55
SDDSC240	In Progress plan 1250 m	Rising Sun	330353.9	5867861.1	277.2	-58.3	73.9
SDDSC241	418.6	Golden Dyke	330700.9	5867879.7	299.8	-39.1	243.5
SDDSC242A	370.8	Golden Dyke	330814	5867848	301	-45.7	255.1
SDDSC242AW1	600	Golden Dyke	330814	5867848	301	0	0
SDDSC243	1037.9	Apollo	331615.8	5867951.1	346.99	-59.5	269
SDDSC245	548.8	Regional	331533.7	5867845.3	341.2	-40.7	156.1
SDDSC246	760.3	Golden Dyke	330753.7	5867731.8	306.73	-39.5	274.6
SDDSC247	193.6	Golden Dyke	330772.2	5867889.6	295.73	-32.3	248.5
SDDSC248	572.5	Apollo	331291.3	5867825.7	316.38	-40.9	269.8
SDDSC249	190	Golden Dyke	330772.7	5867889.6	295.74	-36.7	245.9
SDDSC250	199.8	Golden Dyke	330772.4	5867889.9	295.7	-36.9	252.3
SDDSC251	120.4	Apollo	331532.6	5867847.5	340.85	-31.9	270.4
SDDSC251A	306.7	Apollo	331532.8	5867847.9	340.89	-31.7	273.7
SDDSC252	200	Golden Dyke	330772.7	5867889.9	295.68	-40	249.9
SDDSC253	349.4	Apollo	331595.8	5867936.9	345.63	-53.8	267.8
SDDSC253W1	In Progress plan 1050 m	Apollo	331595.8	5867936.9	345.63	-53.8	267.8
SDDSC255	540	Golden Dyke	330773	5867890	295.56	-41.4	251.2
SDDSC256	In Progress plan 450 m	Golden Dyke	330775.7	5867890.8	295.4093	-31.2	246
SDDSC257	In Progress plan 830 m	Golden Dyke	330813.6	5867847.5	301.1	-43	263.8
SDDSC259	In Progress plan 830 m	Golden Dyke	330754.1	5867733.3	306.9	-43.6	273.6
SDDSC261	In Progress plan 1015 m	Apollo	331615.6	5867951	346.8	45.1	266.3

Regional holes currently being processed and analyzed

Hole ID	Depth (m)	Prospect	East GDA94 Z55	North GDA94 Z55	Elevation (m)	Dip	Azimuth GDA94 Z55
SDDRE016	410.45	Redcastle	302735	5927298	217	-50.3	67.7
SDDRE017	359.8	Beautiful Venus	305388.6	5926618	206.62	-50.9	68.9
SDDTS009	506	Tonstall	336984.3	5870557.1	524.7	-28.3	285
SDDTS008	511.37	Tonstall	336992.9	5870558.4	524	-35	29
SDDTS010	535.79	Tonstall	336993.7	5870557.9	524.1	-37	44.4
SDDTS011	401.32	Tonstall	336992.1	5870557.3	524.1	-43	18
SDDCN002	350	Consols	336041	5870691	484	-37	241
SDDL005A	420	Leviathan	334580	5870167	555.4	-31	206
SDDL005	32.4	Leviathan	334580	5870167	555	-33	206
SDDL006	In Progress plan 570 m	Leviathan	334580	5870167	555.4	-47	152
SDDCN003	In Progress plan 400 m	Consols	336043.5	5870690	484.1193	-36	130

Abandoned drill holes currently being processed and analyzed

Hole ID	Depth (m)	Prospect	East GDA94 Z55	North GDA94 Z55	Elevation (m)	Dip	Azimuth GDA94 Z55
SDDSC216	131.2	Golden Dyke	330701	5867880.5	299.42	-46.3	252.5
SDDSC242	20.65	Golden Dyke	330814	5867848	301	-45.7	255.1

For personal use only

Table 2: Table of mineralized drill hole intersections reported from SDDSC202, SDDSC204, SDDSC209, SDDSC212, SDDSC214, SDDSC214W1 and SDDSC217 with two cutoff criteria. Lower grades cut at 1.0 g/t AuEq lower cutoff over a maximum of 2 m with higher grades cut at 5.0 g/t AuEq cutoff over a maximum of 1 m. Significant intersections and interval depths are rounded to one decimal place.

Hole number	From (m)	To (m)	Interval (m)	Au g/t	Sb %	AuEq g/t
SDDSC202	538.8	539.0	0.2	34.9	9.9	58.6
SDDSC202	690.6	692.1	1.5	7.6	0.4	8.7
SDDSC202	700.0	736.6	36.6	4.0	1.0	6.5
Including	703.0	705.6	2.7	18.4	6.5	34.0
Including	709.7	711.0	1.4	2.0	0.7	3.7
Including	712.1	713.6	1.5	25.2	0.9	27.3
Including	717.1	717.6	0.5	10.0	1.5	13.6
Including	723.6	726.0	2.4	9.4	1.2	12.3
Including	727.9	728.4	0.5	8.6	0.8	10.5
SDDSC202	750.5	752.8	2.3	4.9	0.2	5.5
Including	750.5	752.0	1.5	5.3	0.2	5.9
SDDSC202	759.3	760.8	1.6	1.9	0.8	4.0
SDDSC202	763.3	766.0	2.7	0.9	0.7	2.6
SDDSC202	778.1	778.2	0.1	493.0	3.9	502.3
SDDSC202	784.3	785.8	1.5	9.2	1.5	12.8
Including	785.0	785.8	0.8	16.4	2.7	22.9
SDDSC202	789.0	791.1	2.1	5.0	2.9	11.9
SDDSC202	894.3	895.6	1.3	14.9	6.6	30.6
Including	894.6	895.6	0.9	20.4	9.2	42.4
SDDSC204	1095.5	1096.8	1.3	4.4	0.0	4.5
SDDSC204	1102.0	1106.5	4.5	1.5	0.0	1.6
SDDSC212	356.7	359.2	2.5	0.9	0.0	0.9
SDDSC212	432.0	435.0	3.0	1.6	0.2	2.1
SDDSC212	437.5	438.7	1.2	1.7	0.0	1.8
SDDSC214W1	596.3	597.5	1.2	13.9	1.7	17.8
Including	596.3	596.6	0.2	71.2	6.7	87.2
SDDSC214W1	605.2	605.7	0.5	232.0	8.1	251.4
SDDSC214W1	634.6	646.6	12.1	3.5	0.2	4.0
Including	634.6	636.1	1.6	22.9	0.5	24.2
SDDSC214W1	657.1	660.6	3.5	0.3	0.2	0.7
SDDSC214W1	665.1	667.7	2.6	0.4	0.2	0.8
SDDSC214W1	713.0	715.4	2.4	0.6	0.2	1.0
SDDSC214W1	760.3	760.6	0.3	10.0	0.0	10.0
SDDSC214W1	830.3	831.9	1.6	1.0	0.1	1.4
SDDSC214W1	991.9	994.2	2.2	44.9	0.0	45.0
Including	992.3	992.9	0.5	64.4	0.0	64.5
Including	994.0	994.2	0.2	362.0	0.1	362.3
SDDSC214W1	1036.5	1036.6	0.1	25.0	0.0	25.0
SDDSC217	312.3	313.2	0.9	12.6	7.7	31.0
Including	312.3	312.6	0.3	33.3	21.6	84.9
SDDSC217	324.9	325.0	0.1	55.8	31.3	130.6

For personal use only

Hole number	From (m)	To (m)	Interval (m)	Au g/t	Sb %	AuEq g/t
SDDSC217	330.2	330.7	0.5	3.9	1.6	7.6

Table 3: All individual assays reported from SDDSC202, SDDSC204, SDDSC209, SDDSC212, SDDSC214, SDDSC214W1 and SDDSC217 reported here >0.1g/t AuEq. Individual assay and sample intervals are reported to two decimal places.

Hole number	From (m)	To (m)	Interval (m)	Au g/t	Sb %	AuEq g/t
SDDSC202	267.63	268.52	0.89	0.14	0.00	0.1
SDDSC202	506.66	507.28	0.62	0.17	0.00	0.2
SDDSC202	507.28	507.42	0.14	0.24	0.00	0.2
SDDSC202	509.65	510.43	0.78	0.28	0.00	0.3
SDDSC202	510.43	511.7	1.27	0.12	0.00	0.1
SDDSC202	528.56	529.8	1.24	0.11	0.04	0.2
SDDSC202	529.8	530.83	1.03	0.29	0.01	0.3
SDDSC202	530.83	530.95	0.12	8.72	0.01	8.7
SDDSC202	534.9	535.8	0.9	0.3	0.06	0.4
SDDSC202	535.96	536.39	0.43	0.11	0.03	0.2
SDDSC202	537.12	537.3	0.18	0.1	0.01	0.1
SDDSC202	538.75	538.96	0.21	34.9	9.91	58.6
SDDSC202	538.96	539.7	0.74	0.79	0.04	0.9
SDDSC202	557.21	557.95	0.74	-0.01	0.05	0.1
SDDSC202	557.95	558.1	0.15	1.56	0.07	1.7
SDDSC202	559.98	560.98	1	0.13	0.01	0.1
SDDSC202	560.98	561.46	0.48	0.15	0.00	0.2
SDDSC202	562.6	562.75	0.15	1.84	0.01	1.9
SDDSC202	563.45	563.7	0.25	0.16	0.00	0.2
SDDSC202	568.29	569.59	1.3	0.13	0.01	0.1
SDDSC202	574.97	575.91	0.94	0.16	0.00	0.2
SDDSC202	582.1	583.11	1.01	0.48	0.01	0.5
SDDSC202	583.11	583.79	0.68	1.17	0.01	1.2
SDDSC202	583.79	584.5	0.71	1.07	0.01	1.1
SDDSC202	584.5	584.65	0.15	0.79	0.01	0.8
SDDSC202	584.65	585.45	0.8	0.24	0.00	0.2
SDDSC202	586.05	587.05	1	0.24	0.00	0.2
SDDSC202	587.05	588.3	1.25	0.52	0.00	0.5
SDDSC202	589	589.45	0.45	0.48	0.00	0.5
SDDSC202	590.96	591.25	0.29	0.15	0.00	0.2
SDDSC202	591.25	592.17	0.92	0.14	0.00	0.1
SDDSC202	592.17	592.59	0.42	0.88	0.00	0.9
SDDSC202	592.59	593.63	1.04	0.1	0.00	0.1
SDDSC202	597.2	598.2	1	0.27	0.00	0.3
SDDSC202	598.2	599	0.8	0.31	0.00	0.3
SDDSC202	599	599.7	0.7	0.15	0.00	0.2
SDDSC202	613.8	614.49	0.69	0.24	0.00	0.2
SDDSC202	671.58	672.39	0.81	0.12	0.00	0.1
SDDSC202	685.55	685.65	0.1	0.15	0.35	1.0
SDDSC202	686.34	686.71	0.37	0.27	0.00	0.3

Hole number	From (m)	To (m)	Interval (m)	Au g/t	Sb %	AuEq g/t
SDDSC202	688.74	689.53	0.79	0.09	0.02	0.1
SDDSC202	689.53	690.1	0.57	0.14	0.02	0.2
SDDSC202	690.1	690.6	0.5	0.1	0.01	0.1
SDDSC202	690.6	690.75	0.15	36.3	1.48	39.8
SDDSC202	690.75	691.01	0.26	2.21	0.18	2.6
SDDSC202	691.01	691.43	0.42	0.77	0.06	0.9
SDDSC202	691.43	691.68	0.25	1.03	0.24	1.6
SDDSC202	691.68	692.08	0.4	11.7	0.76	13.5
SDDSC202	692.08	693.31	1.23	0.17	0.01	0.2
SDDSC202	693.31	693.8	0.49	0.4	0.02	0.5
SDDSC202	694.57	695.35	0.78	0.16	0.04	0.3
SDDSC202	695.35	696.35	1	0.03	0.03	0.1
SDDSC202	697.07	697.76	0.69	0.13	0.01	0.2
SDDSC202	698.72	699	0.28	0.1	0.01	0.1
SDDSC202	699	700	1	0.17	0.01	0.2
SDDSC202	700	700.52	0.52	0.78	0.10	1.0
SDDSC202	700.52	701	0.48	0.16	0.03	0.2
SDDSC202	701	701.17	0.17	0.69	0.03	0.8
SDDSC202	701.17	701.42	0.25	0.78	0.03	0.8
SDDSC202	701.42	701.96	0.54	0.6	0.73	2.3
SDDSC202	701.96	702.09	0.13	0.37	0.83	2.4
SDDSC202	702.09	702.95	0.86	0.18	0.13	0.5
SDDSC202	702.95	703.42	0.47	3.21	1.02	5.6
SDDSC202	703.42	703.79	0.37	2.45	0.81	4.4
SDDSC202	703.79	704.41	0.62	0.17	0.05	0.3
SDDSC202	704.41	704.59	0.18	5.81	16.70	45.7
SDDSC202	704.59	704.87	0.28	91.5	29.10	161.0
SDDSC202	704.87	705.05	0.18	106	25.70	167.4
SDDSC202	705.05	705.5	0.45	1.54	1.15	4.3
SDDSC202	705.5	705.63	0.13	2.13	2.89	9.0
SDDSC202	705.63	706.93	1.3	0.89	0.63	2.4
SDDSC202	706.93	707.71	0.78	0.94	0.15	1.3
SDDSC202	707.71	708.1	0.39	0.36	0.10	0.6
SDDSC202	708.1	708.24	0.14	5.78	1.37	9.1
SDDSC202	708.24	709.1	0.86	0.6	0.47	1.7
SDDSC202	709.1	709.68	0.58	0.62	0.24	1.2
SDDSC202	709.68	709.78	0.1	3.4	1.18	6.2
SDDSC202	709.78	710.29	0.51	0.32	0.24	0.9
SDDSC202	710.29	711.03	0.74	3.01	0.98	5.4
SDDSC202	711.03	712.1	1.07	0.29	0.17	0.7
SDDSC202	712.1	712.3	0.2	15.8	1.17	18.6
SDDSC202	712.3	712.67	0.37	14.4	0.80	16.3
SDDSC202	712.67	712.85	0.18	132	2.26	137.4
SDDSC202	712.85	713.2	0.35	2.81	0.54	4.1
SDDSC202	713.2	713.6	0.4	11.3	0.53	12.6
SDDSC202	713.6	714.6	1	0.66	1.15	3.4

Hole number	From (m)	To (m)	Interval (m)	Au g/t	Sb %	AuEq g/t
SDDSC202	714.6	715.67	1.07	0.97	0.39	1.9
SDDSC202	715.67	716.56	0.89	1.11	0.57	2.5
SDDSC202	716.56	717.13	0.57	0.35	0.14	0.7
SDDSC202	717.13	717.63	0.5	9.95	1.54	13.6
SDDSC202	717.63	718.93	1.3	1.31	0.13	1.6
SDDSC202	718.93	719.8	0.87	0.61	1.61	4.5
SDDSC202	719.8	720.05	0.25	0.75	2.89	7.7
SDDSC202	720.05	721.35	1.3	0.26	0.33	1.0
SDDSC202	721.35	722.31	0.96	0.56	0.22	1.1
SDDSC202	722.31	722.41	0.1	2.28	7.38	19.9
SDDSC202	722.41	723.39	0.98	0.6	0.95	2.9
SDDSC202	723.39	723.57	0.18	0.94	1.02	3.4
SDDSC202	723.57	724.2	0.63	9.55	1.14	12.3
SDDSC202	724.2	725.32	1.12	12.6	1.46	16.1
SDDSC202	725.32	725.95	0.63	3.63	0.76	5.4
SDDSC202	725.95	726.69	0.74	0.2	0.06	0.3
SDDSC202	726.69	727.92	1.23	2.94	0.39	3.9
SDDSC202	727.92	728.4	0.48	8.62	0.79	10.5
SDDSC202	728.4	728.75	0.35	0.52	1.06	3.1
SDDSC202	728.75	729.74	0.99	0.66	0.71	2.4
SDDSC202	729.74	729.87	0.13	10.7	0.20	11.2
SDDSC202	729.87	730.67	0.8	0.35	0.69	2.0
SDDSC202	730.67	731.94	1.27	0.96	0.36	1.8
SDDSC202	731.94	733.05	1.11	0.41	0.39	1.3
SDDSC202	733.05	733.27	0.22	1.15	1.71	5.2
SDDSC202	733.27	734.41	1.14	0.43	0.08	0.6
SDDSC202	734.41	735.31	0.9	0.49	0.11	0.8
SDDSC202	735.31	735.71	0.4	1.06	0.21	1.6
SDDSC202	735.71	736.11	0.4	6.56	0.04	6.6
SDDSC202	736.11	736.29	0.18	5.81	0.10	6.0
SDDSC202	736.29	736.59	0.3	2.91	0.12	3.2
SDDSC202	750.15	750.52	0.37	0.15	0.02	0.2
SDDSC202	750.52	750.89	0.37	7.98	0.18	8.4
SDDSC202	750.89	751.89	1	0.42	0.05	0.5
SDDSC202	751.89	752.03	0.14	33.4	1.69	37.4
SDDSC202	752.03	752.83	0.8	4.15	0.28	4.8
SDDSC202	752.83	753.37	0.54	0.09	0.02	0.1
SDDSC202	753.37	754.19	0.82	0.11	0.04	0.2
SDDSC202	754.19	755.36	1.17	0.12	0.02	0.2
SDDSC202	755.36	756.05	0.69	0.29	0.10	0.5
SDDSC202	756.05	757.1	1.05	0.39	0.20	0.9
SDDSC202	758.36	758.89	0.53	0.17	0.03	0.3
SDDSC202	758.89	759.29	0.4	0.15	0.02	0.2
SDDSC202	759.29	759.44	0.15	16.3	6.12	30.9
SDDSC202	759.44	759.65	0.21	0.68	0.44	1.7
SDDSC202	759.65	760.04	0.39	0.14	0.03	0.2

Hole number	From (m)	To (m)	Interval (m)	Au g/t	Sb %	AuEq g/t
SDDSC202	760.04	760.49	0.45	0.13	0.02	0.2
SDDSC202	760.49	760.84	0.35	0.86	0.80	2.8
SDDSC202	760.84	761.05	0.21	0.07	0.03	0.1
SDDSC202	761.05	761.35	0.3	0.12	0.01	0.1
SDDSC202	763	763.29	0.29	0.18	0.23	0.7
SDDSC202	763.29	763.75	0.46	1.33	1.70	5.4
SDDSC202	763.75	764.31	0.56	0.66	0.49	1.8
SDDSC202	764.31	765.14	0.83	0.09	0.10	0.3
SDDSC202	765.14	765.75	0.61	0.91	1.15	3.7
SDDSC202	765.75	765.93	0.18	0.06	0.07	0.2
SDDSC202	765.93	766.03	0.1	7.38	1.51	11.0
SDDSC202	767.98	768.6	0.62	0.42	0.03	0.5
SDDSC202	770.9	771.12	0.22	0.51	0.52	1.8
SDDSC202	777	778.1	1.1	0.19	0.05	0.3
SDDSC202	778.1	778.2	0.1	493	3.89	502.3
SDDSC202	778.2	778.87	0.67	0.41	0.02	0.5
SDDSC202	784.28	784.42	0.14	1.42	0.24	2.0
SDDSC202	784.95	785.06	0.11	1.94	2.38	7.6
SDDSC202	785.64	785.77	0.13	102	15.00	137.9
SDDSC202	786.83	787.93	1.1	0.27	0.01	0.3
SDDSC202	787.93	789	1.07	0.07	0.02	0.1
SDDSC202	789	789.11	0.11	4.63	6.11	19.2
SDDSC202	789.11	789.95	0.84	0.57	0.49	1.7
SDDSC202	789.95	790.14	0.19	1.45	5.94	15.6
SDDSC202	790.14	790.38	0.24	0.2	0.14	0.5
SDDSC202	790.38	790.48	0.1	19.3	2.32	24.8
SDDSC202	790.48	790.89	0.41	0.23	0.29	0.9
SDDSC202	790.89	791.06	0.17	41.2	19.80	88.5
SDDSC202	799.76	800.46	0.7	0.58	0.20	1.1
SDDSC202	800.46	800.91	0.45	0.44	0.06	0.6
SDDSC202	808.56	808.67	0.11	6.86	0.34	7.7
SDDSC202	809.8	811.01	1.21	0.6	0.02	0.7
SDDSC202	811.01	811.25	0.24	0.2	0.04	0.3
SDDSC202	811.25	811.44	0.19	0.64	0.03	0.7
SDDSC202	836.92	838.22	1.3	0.23	0.01	0.3
SDDSC202	843.71	844.23	0.52	0.63	0.02	0.7
SDDSC202	868.66	868.84	0.18	0.29	0.00	0.3
SDDSC202	871.83	871.96	0.13	0.89	0.08	1.1
SDDSC202	891.73	892	0.27	0.55	0.01	0.6
SDDSC202	893.64	894.27	0.63	0.47	0.22	1.0
SDDSC202	894.27	894.64	0.37	1.14	0.05	1.3
SDDSC202	894.64	894.86	0.22	81.5	31.40	156.5
SDDSC202	894.86	895.41	0.55	1.17	1.15	3.9
SDDSC202	895.41	895.56	0.15	1.41	6.04	15.8
SDDSC202	895.56	896.5	0.94	0.22	0.06	0.4
SDDSC202	906.79	907.16	0.37	0.17	0.01	0.2

Hole number	From (m)	To (m)	Interval (m)	Au g/t	Sb %	AuEq g/t
SDDSC202	913.89	914.39	0.5	0.3	0.00	0.3
SDDSC202	915.43	915.65	0.22	0.14	0.00	0.1
SDDSC202	917.63	918	0.37	0.27	0.00	0.3
SDDSC202	918	919.03	1.03	0.18	0.00	0.2
SDDSC202	919.03	919.83	0.8	0.22	0.00	0.2
SDDSC202	920.96	921.52	0.56	0.46	0.00	0.5
SDDSC202	922.82	923.79	0.97	0.18	0.00	0.2
SDDSC202	923.79	924.86	1.07	0.32	0.00	0.3
SDDSC202	924.86	925.72	0.86	0.45	0.01	0.5
SDDSC202	925.72	926.28	0.56	0.91	0.00	0.9
SDDSC202	929.67	930.48	0.81	0.25	0.00	0.3
SDDSC202	930.48	930.85	0.37	0.27	0.00	0.3
SDDSC204	643.93	644.45	0.52	0.55	0.01	0.6
SDDSC204	644.45	644.88	0.43	1.75	0.00	1.8
SDDSC204	644.88	645.12	0.24	1.23	0.00	1.2
SDDSC204	645.12	646.42	1.3	0.18	0.00	0.2
SDDSC204	732	732.83	0.83	0.14	0.01	0.2
SDDSC204	805.6	805.97	0.37	0.86	0.00	0.9
SDDSC204	811.68	812.1	0.42	0.14	0.00	0.1
SDDSC204	820.46	820.97	0.51	0.1	0.00	0.1
SDDSC204	828.26	828.65	0.39	0.15	0.00	0.2
SDDSC204	875.5	875.75	0.25	0.15	0.00	0.2
SDDSC204	889.75	891	1.25	0.11	0.00	0.1
SDDSC204	896.85	898.02	1.17	0.465	0.01	0.5
SDDSC204	898.02	898.13	0.11	1.26	0.07	1.4
SDDSC204	898.84	899.42	0.58	0.18	0.00	0.2
SDDSC204	899.42	900.08	0.66	0.25	0.00	0.3
SDDSC204	900.08	900.31	0.23	0.77	0.01	0.8
SDDSC204	900.31	900.65	0.34	1.85	0.03	1.9
SDDSC204	900.65	901	0.35	0.67	0.01	0.7
SDDSC204	908.12	909	0.88	0.15	0.00	0.2
SDDSC204	1037.2	1038.5	1.3	0.22	0.00	0.2
SDDSC204	1050.2	1051.5	1.3	0.1	0.00	0.1
SDDSC204	1061.9	1063	1.1	0.36	0.00	0.4
SDDSC204	1069.2	1070.2	1	0.12	0.00	0.1
SDDSC204	1084.58	1084.9	0.32	0.07	0.03	0.1
SDDSC204	1085.9	1086.41	0.51	1.25	0.01	1.3
SDDSC204	1086.41	1087.7	1.29	0.62	0.00	0.6
SDDSC204	1090.08	1090.36	0.28	2.96	0.00	3.0
SDDSC204	1095.5	1096.8	1.3	4.44	0.01	4.5
SDDSC204	1096.8	1098.1	1.3	0.17	0.01	0.2
SDDSC204	1102	1103	1	1.25	0.01	1.3
SDDSC204	1103	1104.2	1.2	0.8	0.01	0.8
SDDSC204	1104.2	1105	0.8	2.58	0.01	2.6
SDDSC204	1105	1105.66	0.66	1.44	0.01	1.5
SDDSC204	1105.66	1106.46	0.8	2.11	0.02	2.1

Hole number	From (m)	To (m)	Interval (m)	Au g/t	Sb %	AuEq g/t
SDDSC204	1110.97	1111.08	0.11	0.82	0.00	0.8
SDDSC204	1126.63	1126.86	0.23	0.12	0.00	0.1
SDDSC204	1146.44	1146.55	0.11	0.21	0.00	0.2
SDDSC204	1148.54	1149.45	0.91	0.14	0.00	0.1
SDDSC204	1150.14	1150.36	0.22	0.17	0.01	0.2
SDDSC204	1152.67	1153.8	1.13	0.11	0.00	0.1
SDDSC204	1154.84	1155.93	1.09	0.3	0.00	0.3
SDDSC204	1167.78	1168.07	0.29	0.38	0.00	0.4
SDDSC204	1169.37	1170.3	0.93	0.15	0.00	0.2
SDDSC204	1171.52	1172.5	0.98	0.1	0.00	0.1
SDDSC204	1172.5	1173.8	1.3	1.52	0.00	1.5
SDDSC204	1173.8	1174.8	1	0.83	0.00	0.8
SDDSC204	1174.8	1175.8	1	0.33	0.00	0.3
SDDSC204	1175.8	1177	1.2	0.15	0.00	0.2
SDDSC204	1177	1177.43	0.43	0.1	0.00	0.1
SDDSC204	1177.43	1178.73	1.3	0.21	0.00	0.2
SDDSC204	1178.73	1179	0.27	0.16	0.00	0.2
SDDSC204	1179	1179.44	0.44	0.25	0.00	0.3
SDDSC204	1179.44	1180.5	1.06	0.13	0.00	0.1
SDDSC212	324.15	324.4	0.25	0.11	0.00	0.1
SDDSC212	339.02	339.59	0.57	0.12	0.00	0.1
SDDSC212	341.04	341.64	0.6	0.08	0.01	0.1
SDDSC212	342.66	343.03	0.37	0.22	0.00	0.2
SDDSC212	344.33	345.63	1.3	0.1	0.00	0.1
SDDSC212	355.53	356.72	1.19	0.12	0.00	0.1
SDDSC212	356.72	357.22	0.5	2.98	0.00	3.0
SDDSC212	359.05	359.24	0.19	3.5	0.03	3.6
SDDSC212	359.24	359.59	0.35	0.06	0.03	0.1
SDDSC212	364.72	366.02	1.3	0.19	0.00	0.2
SDDSC212	366.02	367.32	1.3	0.21	0.00	0.2
SDDSC212	367.32	368.62	1.3	0.28	0.00	0.3
SDDSC212	410.3	411.3	1	0.19	0.00	0.2
SDDSC212	411.7	412.13	0.43	0.26	0.00	0.3
SDDSC212	412.13	412.4	0.27	0.18	0.00	0.2
SDDSC212	412.6	412.8	0.2	0.47	0.01	0.5
SDDSC212	413.5	414	0.5	0.09	0.00	0.1
SDDSC212	415	416	1	0.09	0.01	0.1
SDDSC212	416	416.53	0.53	0.08	0.02	0.1
SDDSC212	416.53	417	0.47	0.06	0.02	0.1
SDDSC212	420.8	422	1.2	0.1	0.00	0.1
SDDSC212	424.92	425.13	0.21	0.51	0.00	0.5
SDDSC212	425.13	426	0.87	0.07	0.01	0.1
SDDSC212	426	427	1	0.13	0.01	0.2
SDDSC212	430	431	1	0.07	0.02	0.1
SDDSC212	431	432	1	0.64	0.03	0.7
SDDSC212	432	433	1	1.18	0.04	1.3

Hole number	From (m)	To (m)	Interval (m)	Au g/t	Sb %	AuEq g/t
SDDSC212	433	434	1	0.92	0.14	1.3
SDDSC212	434	435	1	2.82	0.40	3.8
SDDSC212	435	436	1	0.28	0.03	0.4
SDDSC212	436	437	1	0.11	0.01	0.1
SDDSC212	437	437.52	0.52	0.41	0.02	0.5
SDDSC212	437.52	438	0.48	1.93	0.02	2.0
SDDSC212	438	438.7	0.7	1.52	0.05	1.6
SDDSC214W1	575.2	575.63	0.43	0.11	0.01	0.1
SDDSC214W1	588	588.85	0.85	0.15	0.05	0.3
SDDSC214W1	588.85	589.18	0.33	1.98	0.00	2.0
SDDSC214W1	589.18	590	0.82	0.19	0.00	0.2
SDDSC214W1	591	592	1	0.1	0.00	0.1
SDDSC214W1	592	592.73	0.73	0.14	0.00	0.2
SDDSC214W1	595.96	596.33	0.37	0.15	0.02	0.2
SDDSC214W1	596.33	596.55	0.22	71.2	6.70	87.2
SDDSC214W1	596.55	596.81	0.26	0.75	0.29	1.4
SDDSC214W1	596.81	597.24	0.43	0.41	0.38	1.3
SDDSC214W1	597.24	597.5	0.26	0.69	0.84	2.7
SDDSC214W1	597.5	598	0.5	0.25	0.06	0.4
SDDSC214W1	598	598.5	0.5	0.31	0.21	0.8
SDDSC214W1	599.18	599.6	0.42	0.15	0.02	0.2
SDDSC214W1	601.27	601.68	0.41	0.12	0.00	0.1
SDDSC214W1	601.68	602.3	0.62	0.42	0.00	0.4
SDDSC214W1	602.3	603.16	0.86	0.21	0.00	0.2
SDDSC214W1	605.18	605.65	0.47	232	8.11	251.4
SDDSC214W1	605.65	605.95	0.3	0.09	0.02	0.1
SDDSC214W1	609.85	610.45	0.6	0.11	0.01	0.1
SDDSC214W1	615.66	616.45	0.79	0.2	0.00	0.2
SDDSC214W1	616.45	617.42	0.97	0.13	0.10	0.4
SDDSC214W1	617.42	617.69	0.27	0.2	0.25	0.8
SDDSC214W1	617.69	618.93	1.24	0.08	0.02	0.1
SDDSC214W1	618.93	619.79	0.86	0.08	0.01	0.1
SDDSC214W1	626.28	626.66	0.38	0.07	0.16	0.5
SDDSC214W1	626.66	627.59	0.93	0.26	0.57	1.6
SDDSC214W1	627.59	627.98	0.39	0.08	0.01	0.1
SDDSC214W1	628.22	628.91	0.69	0.14	0.04	0.2
SDDSC214W1	629.49	630.02	0.53	0.98	0.01	1.0
SDDSC214W1	630.25	631	0.75	0.44	0.07	0.6
SDDSC214W1	631	631.23	0.23	0.57	0.10	0.8
SDDSC214W1	631.23	632.23	1	0.09	0.01	0.1
SDDSC214W1	632.23	632.93	0.7	0.14	0.01	0.2
SDDSC214W1	632.93	633.96	1.03	0.19	0.01	0.2
SDDSC214W1	633.96	634.55	0.59	0.1	0.01	0.1
SDDSC214W1	634.55	635.17	0.62	38.6	0.36	39.5
SDDSC214W1	635.17	635.53	0.36	0.88	0.07	1.1
SDDSC214W1	635.53	635.88	0.35	24.6	0.91	26.8

Hole number	From (m)	To (m)	Interval (m)	Au g/t	Sb %	AuEq g/t
SDDSC214W1	635.88	636.12	0.24	12.7	1.22	15.6
SDDSC214W1	636.12	637.1	0.98	0.66	0.03	0.7
SDDSC214W1	637.39	637.8	0.41	1.58	0.67	3.2
SDDSC214W1	638.6	639.13	0.53	0.81	0.09	1.0
SDDSC214W1	639.13	639.79	0.66	0.7	0.14	1.0
SDDSC214W1	639.79	640.41	0.62	0.7	0.10	0.9
SDDSC214W1	641.7	642.13	0.43	2.73	0.51	3.9
SDDSC214W1	642.13	642.52	0.39	0.57	0.00	0.6
SDDSC214W1	642.52	643.14	0.62	0.86	0.07	1.0
SDDSC214W1	643.66	644.56	0.9	0.72	0.28	1.4
SDDSC214W1	644.56	644.78	0.22	1.16	0.16	1.5
SDDSC214W1	644.78	645.11	0.33	0.54	0.14	0.9
SDDSC214W1	645.11	646.08	0.97	0.15	0.06	0.3
SDDSC214W1	646.08	646.62	0.54	0.7	0.63	2.2
SDDSC214W1	646.62	647.24	0.62	0.68	0.05	0.8
SDDSC214W1	647.24	648.21	0.97	0.55	0.17	1.0
SDDSC214W1	648.21	648.95	0.74	0.21	0.01	0.2
SDDSC214W1	654.42	655.36	0.94	0.13	0.01	0.1
SDDSC214W1	655.36	655.98	0.62	0.21	0.03	0.3
SDDSC214W1	657.06	657.52	0.46	1.04	0.25	1.6
SDDSC214W1	658.21	658.68	0.47	1.07	0.63	2.6
SDDSC214W1	659.05	659.44	0.39	0.08	0.09	0.3
SDDSC214W1	659.44	660.39	0.95	0.03	0.04	0.1
SDDSC214W1	660.39	660.6	0.21	0.56	0.22	1.1
SDDSC214W1	660.6	661.9	1.3	0.36	0.24	0.9
SDDSC214W1	663.2	663.62	0.42	0.14	0.01	0.2
SDDSC214W1	663.62	664.07	0.45	0.21	0.27	0.9
SDDSC214W1	664.07	664.72	0.65	0.09	0.17	0.5
SDDSC214W1	664.72	665.09	0.37	0.07	0.01	0.1
SDDSC214W1	665.09	665.87	0.78	0.78	0.37	1.7
SDDSC214W1	665.87	666.51	0.64	0.15	0.07	0.3
SDDSC214W1	666.51	666.78	0.27	0.11	0.04	0.2
SDDSC214W1	666.78	667.48	0.7	0.19	0.02	0.2
SDDSC214W1	667.48	667.67	0.19	1.35	0.17	1.8
SDDSC214W1	667.67	668.51	0.84	0.55	0.01	0.6
SDDSC214W1	678	679.05	1.05	0.22	0.01	0.2
SDDSC214W1	679.05	679.71	0.66	0.11	0.00	0.1
SDDSC214W1	694.67	695.47	0.8	0.08	0.01	0.1
SDDSC214W1	695.47	695.85	0.38	0.13	0.02	0.2
SDDSC214W1	699.11	699.76	0.65	0.53	0.01	0.5
SDDSC214W1	699.76	700.54	0.78	0.1	0.26	0.7
SDDSC214W1	700.54	701.07	0.53	0.13	0.01	0.2
SDDSC214W1	701.07	701.58	0.51	0.34	0.25	0.9
SDDSC214W1	704.51	705.13	0.62	0.15	0.15	0.5
SDDSC214W1	705.13	706.24	1.11	0.04	0.05	0.2
SDDSC214W1	706.24	706.7	0.46	0.07	0.18	0.5

Hole number	From (m)	To (m)	Interval (m)	Au g/t	Sb %	AuEq g/t
SDDSC214W1	706.7	707.03	0.33	0.13	0.05	0.2
SDDSC214W1	707.03	707.43	0.4	0.05	0.03	0.1
SDDSC214W1	710.43	710.74	0.31	0.28	0.01	0.3
SDDSC214W1	710.74	711.21	0.47	0.1	0.00	0.1
SDDSC214W1	711.21	711.68	0.47	0.28	0.01	0.3
SDDSC214W1	711.68	711.98	0.3	0.65	0.04	0.7
SDDSC214W1	711.98	713	1.02	0.1	0.01	0.1
SDDSC214W1	713	713.14	0.14	1.25	0.10	1.5
SDDSC214W1	713.14	713.33	0.19	3.37	0.08	3.6
SDDSC214W1	713.33	714.2	0.87	0.09	0.01	0.1
SDDSC214W1	715.08	715.35	0.27	1.94	1.36	5.2
SDDSC214W1	716.06	716.34	0.28	0.21	0.02	0.2
SDDSC214W1	717	717.69	0.69	0.03	0.09	0.2
SDDSC214W1	718.21	718.73	0.52	0.51	0.00	0.5
SDDSC214W1	718.73	719.7	0.97	0.12	0.00	0.1
SDDSC214W1	720.82	721.55	0.73	0.2	0.01	0.2
SDDSC214W1	722.16	722.47	0.31	3.73	0.05	3.8
SDDSC214W1	728.04	728.32	0.28	0.3	0.05	0.4
SDDSC214W1	728.32	729.43	1.11	0.2	0.01	0.2
SDDSC214W1	729.43	729.77	0.34	0.72	0.03	0.8
SDDSC214W1	729.77	730.61	0.84	0.14	0.06	0.3
SDDSC214W1	736.34	737.6	1.26	0.93	0.00	0.9
SDDSC214W1	744.66	744.9	0.24	0.13	0.07	0.3
SDDSC214W1	747.57	748.21	0.64	0.29	0.32	1.1
SDDSC214W1	748.21	748.57	0.36	0.06	0.15	0.4
SDDSC214W1	753.05	753.6	0.55	0.7	0.04	0.8
SDDSC214W1	753.6	753.92	0.32	0.13	0.06	0.3
SDDSC214W1	754.85	755.2	0.35	0.08	0.01	0.1
SDDSC214W1	759.59	760.28	0.69	0.09	0.01	0.1
SDDSC214W1	760.28	760.55	0.27	10	0.00	10.0
SDDSC214W1	760.55	761.06	0.51	0.12	0.01	0.1
SDDSC214W1	761.06	761.6	0.54	0.24	0.01	0.3
SDDSC214W1	761.6	761.8	0.2	0.78	0.03	0.9
SDDSC214W1	761.8	761.93	0.13	0.43	0.09	0.6
SDDSC214W1	761.93	762.67	0.74	0.95	0.21	1.5
SDDSC214W1	762.67	762.89	0.22	0.64	0.01	0.7
SDDSC214W1	762.89	763.93	1.04	0.22	0.01	0.2
SDDSC214W1	770.92	771.11	0.19	0.12	0.05	0.2
SDDSC214W1	772.99	773.24	0.25	0.19	1.87	4.7
SDDSC214W1	785.49	785.61	0.12	0.68	0.01	0.7
SDDSC214W1	820.45	820.66	0.21	0.17	0.07	0.3
SDDSC214W1	829.2	830.26	1.06	0.27	0.00	0.3
SDDSC214W1	830.26	830.85	0.59	0.79	0.39	1.7
SDDSC214W1	830.85	830.97	0.12	0.35	0.00	0.4
SDDSC214W1	830.97	831.86	0.89	1.26	0.00	1.3
SDDSC214W1	831.86	832.9	1.04	0.17	0.00	0.2

Hole number	From (m)	To (m)	Interval (m)	Au g/t	Sb %	AuEq g/t
SDDSC214W1	834.66	835.2	0.54	0.39	0.00	0.4
SDDSC214W1	835.2	835.95	0.75	0.16	0.00	0.2
SDDSC214W1	889.14	890.2	1.06	-0.01	0.05	0.1
SDDSC214W1	890.2	890.45	0.25	0.2	0.00	0.2
SDDSC214W1	895.5	896.8	1.3	0.13	0.01	0.1
SDDSC214W1	896.8	897.02	0.22	0.98	0.02	1.0
SDDSC214W1	898.09	898.44	0.35	0.14	0.01	0.2
SDDSC214W1	898.44	898.96	0.52	0.12	0.01	0.1
SDDSC214W1	905.2	905.97	0.77	0.09	0.00	0.1
SDDSC214W1	913.2	914.2	1	0.31	0.00	0.3
SDDSC214W1	914.2	915.2	1	0.14	0.02	0.2
SDDSC214W1	915.2	916.34	1.14	0.79	0.02	0.8
SDDSC214W1	916.34	917.45	1.11	0.73	0.01	0.7
SDDSC214W1	920.85	921.2	0.35	0.25	0.01	0.3
SDDSC214W1	921.2	922.3	1.1	0.15	0.01	0.2
SDDSC214W1	923.5	924.25	0.75	0.25	0.01	0.3
SDDSC214W1	924.25	925.32	1.07	0.29	0.01	0.3
SDDSC214W1	943.28	944.03	0.75	0.17	0.00	0.2
SDDSC214W1	982.1	982.93	0.83	0.13	0.00	0.1
SDDSC214W1	984	985	1	0.18	0.00	0.2
SDDSC214W1	991.92	992.34	0.42	1.08	0.00	1.1
SDDSC214W1	992.34	992.56	0.22	20.4	0.01	20.4
SDDSC214W1	992.56	992.72	0.16	0.28	0.00	0.3
SDDSC214W1	992.72	992.86	0.14	207	0.08	207.2
SDDSC214W1	992.86	993	0.14	0.15	0.00	0.2
SDDSC214W1	993	993.43	0.43	1.18	0.00	1.2
SDDSC214W1	993.43	993.97	0.54	0.97	0.00	1.0
SDDSC214W1	993.97	994.15	0.18	362	0.13	362.3
SDDSC214W1	994.15	995.2	1.05	0.23	0.00	0.2
SDDSC214W1	996.95	997.49	0.54	0.28	0.01	0.3
SDDSC214W1	998.75	998.89	0.14	2.99	0.02	3.0
SDDSC214W1	998.89	999.75	0.86	0.25	0.01	0.3
SDDSC214W1	999.75	1000.7	0.95	0.9	0.01	0.9
SDDSC214W1	1000.7	1001.56	0.86	0.24	0.01	0.3
SDDSC214W1	1001.56	1002.6	1.04	0.55	0.01	0.6
SDDSC214W1	1002.6	1002.82	0.22	0.33	0.01	0.3
SDDSC214W1	1002.82	1003.98	1.16	0.18	0.01	0.2
SDDSC214W1	1003.98	1004.83	0.85	0.53	0.01	0.5
SDDSC214W1	1004.83	1005.73	0.9	0.28	0.00	0.3
SDDSC214W1	1005.73	1006.64	0.91	0.19	0.00	0.2
SDDSC214W1	1009.32	1009.83	0.51	0.32	0.01	0.3
SDDSC214W1	1009.83	1010.6	0.77	0.22	0.01	0.2
SDDSC214W1	1012.75	1014.05	1.3	0.19	0.00	0.2
SDDSC214W1	1015.28	1015.7	0.42	0.24	0.00	0.3
SDDSC214W1	1015.7	1016.85	1.15	0.14	0.01	0.2
SDDSC214W1	1016.85	1017.75	0.9	0.28	0.00	0.3

Hole number	From (m)	To (m)	Interval (m)	Au g/t	Sb %	AuEq g/t
SDDSC214W1	1017.75	1018.67	0.92	0.29	0.00	0.3
SDDSC214W1	1018.67	1019.54	0.87	0.22	0.00	0.2
SDDSC214W1	1019.54	1020.27	0.73	0.17	0.00	0.2
SDDSC214W1	1020.27	1021	0.73	0.23	0.01	0.2
SDDSC214W1	1021	1022.05	1.05	0.63	0.01	0.6
SDDSC214W1	1022.05	1022.67	0.62	0.71	0.01	0.7
SDDSC214W1	1022.67	1023.3	0.63	0.14	0.01	0.2
SDDSC214W1	1023.3	1023.76	0.46	0.17	0.01	0.2
SDDSC214W1	1023.76	1024.05	0.29	0.16	0.13	0.5
SDDSC214W1	1024.05	1024.52	0.47	0.29	0.02	0.3
SDDSC214W1	1024.52	1025.53	1.01	0.32	0.02	0.4
SDDSC214W1	1025.53	1026.1	0.57	0.23	0.01	0.3
SDDSC214W1	1026.1	1026.54	0.44	0.34	0.02	0.4
SDDSC214W1	1026.54	1027.22	0.68	0.48	0.01	0.5
SDDSC214W1	1027.92	1028.8	0.88	0.29	0.01	0.3
SDDSC214W1	1028.8	1029.5	0.7	0.37	0.01	0.4
SDDSC214W1	1029.5	1030.15	0.65	0.91	0.03	1.0
SDDSC214W1	1030.15	1030.25	0.1	1.24	0.02	1.3
SDDSC214W1	1030.25	1030.48	0.23	1.28	0.29	2.0
SDDSC214W1	1030.48	1030.97	0.49	0.75	0.02	0.8
SDDSC214W1	1030.97	1032.02	1.05	0.11	0.01	0.1
SDDSC214W1	1032.88	1033.96	1.08	0.41	0.01	0.4
SDDSC214W1	1033.96	1035	1.04	0.1	0.02	0.2
SDDSC214W1	1035	1035.96	0.96	0.26	0.02	0.3
SDDSC214W1	1036.48	1036.58	0.1	25	0.00	25.0
SDDSC214W1	1036.58	1037.7	1.12	0.14	0.01	0.2
SDDSC214W1	1039	1039.94	0.94	0.22	0.00	0.2
SDDSC217	193.3	194.3	1	0.23	0.00	0.2
SDDSC217	194.3	195.3	1	0.09	0.00	0.1
SDDSC217	196.15	196.64	0.49	0.4	0.00	0.4
SDDSC217	227.7	228.78	1.08	0.98	0.00	1.0
SDDSC217	255.1	255.39	0.29	0.23	0.00	0.2
SDDSC217	255.39	256.44	1.05	0.31	0.01	0.3
SDDSC217	256.44	257.7	1.26	0.11	0.02	0.1
SDDSC217	270.63	270.73	0.1	0.11	0.00	0.1
SDDSC217	272	273.3	1.3	0.14	0.00	0.1
SDDSC217	275.55	275.65	0.1	0.23	0.00	0.2
SDDSC217	277.19	277.36	0.17	0.18	0.06	0.3
SDDSC217	277.36	277.67	0.31	0.51	0.01	0.5
SDDSC217	277.67	277.77	0.1	0.18	0.01	0.2
SDDSC217	279.64	279.74	0.1	0.2	0.00	0.2
SDDSC217	280.14	280.24	0.1	1.61	1.83	6.0
SDDSC217	284.46	285.04	0.58	0.26	0.00	0.3
SDDSC217	285.04	285.14	0.1	1.18	0.00	1.2
SDDSC217	285.14	286.38	1.24	0.24	0.00	0.2
SDDSC217	286.38	286.59	0.21	0.49	0.00	0.5

Hole number	From (m)	To (m)	Interval (m)	Au g/t	Sb %	AuEq g/t
SDDSC217	290.7	291.38	0.68	0.17	0.00	0.2
SDDSC217	291.38	291.76	0.38	0.16	0.00	0.2
SDDSC217	295.42	295.81	0.39	0.49	0.01	0.5
SDDSC217	299.2	300.5	1.3	0.11	0.00	0.1
SDDSC217	301.7	301.94	0.24	0.13	0.00	0.1
SDDSC217	301.94	302.66	0.72	0.18	0.00	0.2
SDDSC217	303.76	304.5	0.74	0.53	0.01	0.5
SDDSC217	310.9	311.74	0.84	0.13	0.05	0.3
SDDSC217	311.74	312.28	0.54	0.35	0.10	0.6
SDDSC217	312.28	312.61	0.33	33.3	21.60	84.9
SDDSC217	312.61	313.21	0.6	1.26	0.01	1.3
SDDSC217	313.21	314.5	1.29	0.43	0.00	0.4
SDDSC217	318.4	318.59	0.19	0.2	0.18	0.6
SDDSC217	318.59	319.1	0.51	0.25	0.07	0.4
SDDSC217	320.4	321.7	1.3	0.21	0.00	0.2
SDDSC217	324.27	324.9	0.63	0.34	0.09	0.5
SDDSC217	324.9	325.03	0.13	55.8	31.30	130.6
SDDSC217	325.03	325.76	0.73	0.16	0.04	0.3
SDDSC217	325.76	326.47	0.71	0.06	0.02	0.1
SDDSC217	326.47	326.58	0.11	0.74	3.14	8.2
SDDSC217	328.78	329.05	0.27	0.43	0.01	0.5
SDDSC217	329.05	330.17	1.12	0.34	0.01	0.4
SDDSC217	330.17	330.39	0.22	8.54	1.09	11.1
SDDSC217	330.39	330.7	0.31	0.55	1.90	5.1
SDDSC217	330.7	331.02	0.32	0.25	0.02	0.3
SDDSC217	331.02	332.3	1.28	0.12	0.01	0.1
SDDSC217	334.76	335.17	0.41	0.52	0.00	0.5
SDDSC217	430.1	430.7	0.6	0.14	0.00	0.1

JORC Table 1

Section 1 Sampling Techniques and Data

Criteria	JORC Code explanation	Commentary
Sampling techniques	<ul style="list-style-type: none"> Nature and quality of sampling (e.g. cut channels, random chips, or specific specialised industry standard measurement tools appropriate to the minerals under investigation, such as down hole gamma sondes, or handheld XRF instruments, etc.). These examples should not be taken as limiting the broad meaning of sampling. Include reference to measures taken to ensure sample representivity and the appropriate calibration of any measurement tools or systems used. Aspects of the determination of mineralization that are Material to the Public Report. In cases where 'industry standard' work has been done this would be relatively simple (e.g. 'reverse circulation drilling was used to obtain 1 m samples from which 3 kg was pulverised to produce a 30 g charge for fire assay'). In other cases more explanation may be required, such as where there is coarse gold that has inherent sampling problems. Unusual commodities or mineralization types (e.g. submarine nodules) may warrant disclosure of detailed information. 	<ul style="list-style-type: none"> Sampling has been conducted on drill core (half core for >90% and quarter core for check samples), grab samples (field samples of in-situ bedrock and boulders; including duplicate samples), trench samples (rock chips, including duplicates) and soil samples (including duplicate samples). Locations of field samples were obtained by using a GPS, generally to an accuracy of within 5 metres. Drill hole and trench locations have been confirmed to <1 metre using a differential GPS. Samples locations have also been verified by plotting locations on the high-resolution Lidar maps Drill core is marked for cutting and cut using an automated diamond saw used by Company staff in Kilmore. Samples are bagged at the core saw and transported to the Bendigo On Site Laboratory for assay. At On Site samples are crushed using a jaw crusher combined with a rotary splitter and a 1 kg split is separated for pulverizing (LM5) and assay. Standard fire assay techniques are used for gold assay on a 30 g charge by experienced staff (used to dealing with high sulfide and stibnite-rich charges). On Site gold method by fire assay code PE01S. Screen fire assay is used to understand gold grain-size distribution where coarse gold is evident. ICP-OES is used to analyse the aqua regia digested pulp for an additional 12 elements (method BM011) and over-range antimony is measured using flame AAS (method known as B050). Soil samples were sieved in the field and an 80-mesh sample bagged and transported to ALS Global laboratories in Brisbane for super-low level gold analysis on a 50 g samples by method ST44 (using aqua regia and ICP-MS). Grab and rock chip samples are generally submitted to On Site Laboratories for standard fire assay and 12 element ICP-OES as described above.
Drilling techniques	<ul style="list-style-type: none"> Drill type (e.g. core, reverse circulation, open-hole hammer, rotary air blast, auger, Bangka, sonic, etc.) and details (e.g. core diameter, triple or standard tube, depth of diamond tails, face-sampling bit or other type, whether core is oriented and if so, by what method, etc.). 	<ul style="list-style-type: none"> HQ or NQ diameter diamond drill core, oriented using Axis Champ orientation tool with the orientation line marked on the base of the drill core by the driller/offsider. A standard 3 metre core barrel has been found to be most effective in both the hard and soft rocks in the project.
Drill sample recovery	<ul style="list-style-type: none"> Method of recording and assessing core and chip sample recoveries and results assessed. 	<ul style="list-style-type: none"> Core recoveries were maximised using HQ or NQ diamond drill core with careful control over water pressure to maintain soft-rock integrity and prevent

Criteria	JORC Code explanation	Commentary
	<ul style="list-style-type: none"> Measures taken to maximise sample recovery and ensure representative nature of the samples. Whether a relationship exists between sample recovery and grade and whether sample bias may have occurred due to preferential loss/gain of fine/coarse material. 	<p>loss of fines from soft drill core. Recoveries are determined on a metre-by-metre basis in the core shed using a tape measure against marked up drill core checking against driller's core blocks.</p> <ul style="list-style-type: none"> Plots of grade versus recovery and RQD (described below) show no trends relating to loss of drill core, or fines.
Logging	<ul style="list-style-type: none"> Whether core and chip samples have been geologically and geotechnically logged to a level of detail to support appropriate Mineral Resource estimation, mining studies and metallurgical studies. Whether logging is qualitative or quantitative in nature. Core (or costean, channel, etc.) photography. The total length and percentage of the relevant intersections logged. 	<ul style="list-style-type: none"> Geotechnical logging of the drill core takes place on racks in the company core shed. Core orientations marked at the drill rig are checked for consistency, and base of core orientation lines are marked on core where two or more orientations match within 10 degrees. Core recoveries are measured for each metre RQD measurements (cumulative quantity of core sticks > 10 cm in a metre) are made on a metre-by-metre basis. Each tray of drill core is photographed (wet and dry) after it is fully marked up for sampling and cutting. The ½ core cutting line is placed approximately 10 degrees above the orientation line so the orientation line is retained in the core tray for future work. Geological logging of drill core includes the following parameters: Rock types, lithology Alteration Structural information (orientations of veins, bedding, fractures using standard alpha-beta measurements from orientation line; or, in the case of un-oriented parts of the core, the alpha angles are measured) Veining (quartz, carbonate, stibnite) Key minerals (visible under hand lens, e.g. gold, stibnite) 100% of drill core is logged for all components described above into the company MX logging database. Logging is fully quantitative, although the description of lithology and alteration relies on visible observations by trained geologists. Each tray of drill core is photographed (wet and dry) after it is fully marked up for sampling and cutting. Logging is considered to be at an appropriate quantitative standard to use in future studies.
Sub-sampling techniques and sample preparation	<ul style="list-style-type: none"> If core, whether cut or sawn and whether quarter, half or all core taken. If non-core, whether riffled, tube sampled, rotary split, etc. and whether sampled wet or dry. For all sample types, the nature, quality and appropriateness of the sample preparation technique. Quality control procedures adopted for all sub-sampling stages to maximise representivity of samples. 	<ul style="list-style-type: none"> Drill core is typically half-core sampled using an Almonte core saw. The drill core orientation line is retained. Quarter core is used when taking sampling duplicates (termed FDUP in the database). Sampling representivity is maximised by always taking the same side of the drill core (whenever oriented), and consistently drawing a cut line on the core where orientation is not possible. The field technician draws these lines.

Criteria	JORC Code explanation	Commentary
	<ul style="list-style-type: none"> Measures taken to ensure that the sampling is representative of the in situ material collected, including for instance results for field duplicate/second-half sampling. Whether sample sizes are appropriate to the grain size of the material being sampled. 	<ul style="list-style-type: none"> Sample sizes are maximised for coarse gold by using half core, and using quarter core and half core splits (laboratory duplicates) allows an estimation of nugget effect. In mineralized rock the company uses approximately 10% of ¼ core duplicates, certified reference materials (suitable OREAS materials), laboratory sample duplicates and instrument repeats. In the soil sampling program duplicates were obtained every 20th sample and the laboratory inserted low-level gold standards regularly into the sample flow.
Quality of assay data and laboratory tests	<ul style="list-style-type: none"> The nature, quality and appropriateness of the assaying and laboratory procedures used and whether the technique is considered partial or total. For geophysical tools, spectrometers, handheld XRF instruments, etc., the parameters used in determining the analysis including instrument make and model, reading times, calibrations factors applied and their derivation, etc. Nature of quality control procedures adopted (e.g. standards, blanks, duplicates, external laboratory checks) and whether acceptable levels of accuracy (i.e. lack of bias) and precision have been established. 	<ul style="list-style-type: none"> The fire assay technique for gold used by On Site is a globally recognised method, and over-range follow-ups including gravimetric finish and screen fire assay are standard. Of significance at the On Site laboratory is the presence of fire assay personnel who are experienced in dealing with high sulfide charges (especially those with high stibnite contents) – this substantially reduces the risk of inaccurate reporting in complex sulfide-gold charges. Where screen fire assay is used, this assay will be reported instead of the original fire assay. The ICP-OES technique is a standard analytical technique for assessing elemental concentrations. The digest used (aqua regia) is excellent for the dissolution of sulfides (in this case generally stibnite, pyrite and trace arsenopyrite), but other silicate-hosted elements, in particular vanadium (V), may only be partially dissolved. These silicate-hosted elements are not important in the determination of the quantity of gold, antimony, arsenic or sulphur. A portable XRF has been used in a qualitative manner on drill core to ensure appropriate core samples have been taken (no pXRF data are reported or included in the MX database). Acceptable levels of accuracy and precision have been established using the following methods <i>¼ duplicates</i> – half core is split into quarters and given separate sample numbers (commonly in mineralized core) – low to medium gold grades indicate strong correlation, dropping as the gold grade increases over 40 g/t Au. <i>Blanks</i> – blanks are inserted after visible gold and in strongly mineralized rocks to confirm that the crushing and pulping are not affected by gold smearing onto the crusher and LM5 swing mill surfaces. Results are excellent, generally below detection limit and a single sample at 0.03 g/t Au. <i>Certified Reference Materials</i> – OREAS CRMs have been used throughout the project including blanks, low (<1 g/t Au), medium (up to 5 g/t Au) and high-grade gold samples (> 5 g/t Au). Results are automatically checked on data import into the MX database to fall within 2 standard deviations of the expected value. <i>Laboratory splits</i> – On Site conducts splits of both coarse crush and pulp

Criteria	JORC Code explanation	Commentary
		<p>duplicates as quality control and reports all data. In particular, high Au samples have the most repeats.</p> <p><i>Laboratory CRMs</i> – On Site regularly inserts their own CRM materials into the process flow and reports all data</p> <p><i>Laboratory precision</i> – duplicate measurements of solutions (both Au from fire assay and other elements from the aqua regia digests) are made regularly by the laboratory and reported.</p> <ul style="list-style-type: none"> • <i>Accuracy and precision</i> have been determined carefully by using the sampling and measurement techniques described above during the sampling (accuracy) and laboratory (accuracy and precision) stages of the analysis. • <i>Soil sample</i> company duplicates and laboratory certified reference materials all fall within expected ranges.
<p>Verification of sampling and assaying</p>	<ul style="list-style-type: none"> • <i>The verification of significant intersections by either independent or alternative company personnel.</i> • <i>The use of twinned holes.</i> • <i>Documentation of primary data, data entry procedures, data verification, data storage (physical and electronic) protocols.</i> • <i>Discuss any adjustment to assay data.</i> 	<ul style="list-style-type: none"> • The Independent Geologist has visited Sunday Creek drill sites and inspected drill core held at the Kilmore core shed. • Visual inspection of drill intersections matches both the geological descriptions in the database and the expected assay data (for example, gold and stibnite visible in drill core is matched by high Au and Sb results in assays). • In addition, on receipt of results Company geologists assess the gold, antimony and arsenic results to verify that the intersections returned expected data. • The electronic data storage in the MX database is of a high standard. Primary logging data are entered directly by the geologists and field technicians and the assay data are electronically matched against sample number on return from the laboratory. • Certified reference materials, ¼ core field duplicates (FDUP), laboratory splits and duplicates and instrument repeats are all recorded in the database. • Exports of data include all primary data, from hole SDDSC077B onwards after discussion with SRK Consulting. Prior to this gold was averaged across primary, field and lab duplicates. • Adjustments to assay data are recorded by MX, and none are present (or required). • Twinned drill holes are not available at this stage of the project.
<p>Location of data points</p>	<ul style="list-style-type: none"> • <i>Accuracy and quality of surveys used to locate drill holes (collar and down-hole surveys), trenches, mine workings and other locations used in Mineral Resource estimation.</i> • <i>Specification of the grid system used.</i> • <i>Quality and adequacy of topographic control.</i> 	<ul style="list-style-type: none"> • Differential GPS used to locate drill collars, trenches and some workings • Standard GPS for some field locations (grab and soils samples), verified against Lidar data. • The grid system used throughout is Geocentric datum of Australia 1994; Map Grid Zone 55 (GDA94_Z55), also referred to as ELSG 28355. Reported azimuths also relate to MGA55 (GDA94_Z55). • Topographic control is excellent owing to sub 10 cm accuracy from Lidar data.

Criteria	JORC Code explanation	Commentary
Data spacing and distribution	<ul style="list-style-type: none"> • <i>Data spacing for reporting of Exploration Results.</i> • <i>Whether the data spacing and distribution is sufficient to establish the degree of geological and grade continuity appropriate for the Mineral Resource and Ore Reserve estimation procedure(s) and classifications applied.</i> • <i>Whether sample compositing has been applied.</i> 	<ul style="list-style-type: none"> • The data spacing is suitable for reporting of exploration results – evidence for this is based on the improving predictability of high-grade gold-antimony intersections. • At this time, the data spacing and distribution are not sufficient for the reporting of Mineral Resource Estimates. This however may change as knowledge of grade controls increase with future drill programs. • Samples have been composited to a 1 g/t AuEq over 2.0 m width for lower grades and 5 g/t AuEq over 1.0 m width for higher grades in table 3. All individual assays above 0.1 g/t AuEq have been reported to two decimal places with no compositing in table 4.
Orientation of data in relation to geological structure	<ul style="list-style-type: none"> • <i>Whether the orientation of sampling achieves unbiased sampling of possible structures and the extent to which this is known, considering the deposit type.</i> • <i>If the relationship between the drilling orientation and the orientation of key mineralized structures is considered to have introduced a sampling bias, this should be assessed and reported if material.</i> 	<ul style="list-style-type: none"> • The true thickness of the mineralized intervals reported are interpreted to be approximately 55-75% of the sampled thickness. • Drilling is oriented in an optimum direction when considering the combination of host rock orientation and apparent vein control on gold and antimony grade. The steep nature of some of the veins may give increases in apparent thickness of some intersections, but more drilling is required to quantify. • A sampling bias is not evident from the data collected to date (drill holes cut across mineralized structures at a moderate angle).
Sample security	<ul style="list-style-type: none"> • <i>The measures taken to ensure sample security.</i> 	<ul style="list-style-type: none"> • Drill core is delivered to the Kilmore core logging shed by either the drill contractor or company field staff. Samples are marked up and cut by company staff at the Kilmore core shed, in an automated diamond saw and bagged before loaded onto strapped secured pallets and trucked by company staff to Bendigo for submission to the laboratory. There is no evidence in any stage of the process, or in the data for any sample security issues.
Audits or reviews	<ul style="list-style-type: none"> • <i>The results of any audits or reviews of sampling techniques and data.</i> 	<ul style="list-style-type: none"> • Continuous monitoring of CRM results, blanks and duplicates is undertaken by geologists and the company data geologist. Mr Kenneth Bush for SXG has the orientation, logging and assay data.

Section 2 Reporting of Exploration Results

Criteria	JORC Code explanation	Commentary
Mineral tenement and land tenure status	<ul style="list-style-type: none"> Type, reference name/number, location and ownership including agreements or material issues with third parties such as joint ventures, partnerships, overriding royalties, native title interests, historical sites, wilderness or national park and environmental settings. The security of the tenure held at the time of reporting along with any known impediments to obtaining a licence to operate in the area. 	<ul style="list-style-type: none"> The Sunday Creek Project, previously known as the Clonbinane Project, is covered by the Retention Licence RL 6040 and is surrounded by Exploration Licence EL6163 and Exploration Licence EL7232. All the licences are 100% held by Clonbinane Goldfield Pty Ltd, a wholly owned subsidiary company of Southern Cross Gold Ltd.
Exploration done by other parties	<ul style="list-style-type: none"> Acknowledgment and appraisal of exploration by other parties. 	<ul style="list-style-type: none"> The Sunday Creek project is a high level orogenic (or epizonal) Fosterville-style deposit. Small scale mining has been undertaken in the project area since the 1880s continuing through to the early 1900s. Historical production occurred with multiple small shafts and alluvial workings across the Clonbinane Goldfield permits. Production of note occurred at the Clonbinane area with total production being reported as 41,000 oz gold at a grade of 33 g/t gold (Leggo and Holdsworth, 2013) Work in and nearby to the Sunday Creek Project area by previous explorers typically focused on finding bulk, shallow deposits. Beadell Resources were the first to drill deeper targets and Southern Cross have continued their work in the Sunday Creek Project area. EL54 - Eastern Prospectors Pty Ltd Rock chip sampling around Christina, Apollo and Golden Dyke mines. Rock chip sampling down the Christina mine shaft. Resistivity survey over the Golden Dyke. Five diamond drill holes around Christina, two of which have assays. ELs 872 & 975 - CRA Exploration Pty Ltd Exploration focused on finding low grade, high tonnage deposits. The tenements were relinquished after the area was found to be prospective but not economic. Stream sediment samples around the Golden Dyke and Reedy Creek areas. Results were better around the Golden Dyke. 45 dump samples around Golden Dyke old workings showed good correlation between gold, arsenic and antimony. Soil samples over the Golden Dyke to define boundaries of dyke and mineralization. Two costeans parallel to the Golden Dyke targeting soil anomalies. Costeans since rehabilitated by SXG. ELs 827 & 1520 - BHP Minerals Ltd Exploration targeting open cut gold mineralization peripheral to SXG tenements.

Criteria	JORC Code explanation	Commentary
		<ul style="list-style-type: none"> • ELs 1534, 1603 & 3129 - Ausminde Holdings Pty Ltd Targeting shallow, low grade gold. Trenching around the Golden Dyke prospect and results interpreted along with CRAs costeans. 29 RC/Aircore holes totalling 959 m sunk into the Apollo, Rising Sun and Golden Dyke target areas. • ELs 4460 & 4987 - Beadell Resources Ltd ELs 4460 and 4497 were granted to Beadell Resources in November 2007. Beadell successfully drilled 30 RC holes, including second diamond tail holes in the Golden Dyke/Apollo target areas. • Both tenements were 100% acquired by Auminco Goldfields Pty Ltd in late 2012 and combined into one tenement EL4987. • Nagambie Resources Ltd purchased Auminco Goldfields in July 2014. EL4987 expired late 2015, during which time Nagambie Resources applied for a retention licence (RL6040) covering three square kilometres over the Sunday Creek Project. RL6040 was granted July 2017. • Clonbinane Goldfield Pty Ltd was purchased by Mawson Gold Ltd in February 2020. <p>Mawson drilled 30 holes for 6,928 m and made the first discoveries to depth.</p>
Geology	<ul style="list-style-type: none"> • <i>Deposit type, geological setting and style of mineralization.</i> 	<ul style="list-style-type: none"> • Refer to the description in the main body of the release.
Drill hole Information	<ul style="list-style-type: none"> • <i>A summary of all information material to the understanding of the exploration results including a tabulation of the following information for all Material drill holes:</i> <ul style="list-style-type: none"> ○ <i>easting and northing of the drill hole collar</i> ○ <i>elevation or RL (Reduced Level – elevation above sea level in metres) of the drill hole collar</i> ○ <i>dip and azimuth of the hole</i> ○ <i>down hole length and interception depth</i> ○ <i>hole length.</i> • <i>If the exclusion of this information is justified on the basis that the information is not Material and this exclusion does not detract from the understanding of the report, the Competent Person should clearly explain why this is the case.</i> 	<ul style="list-style-type: none"> • Refer to appendices
Data aggregation methods	<ul style="list-style-type: none"> • <i>In reporting Exploration Results, weighting averaging techniques, maximum and/or minimum grade truncations (e.g. cutting of high-grades) and cut-off grades are usually Material and should be stated.</i> • <i>Where aggregate intercepts incorporate short lengths of high-grade results and longer lengths of low-grade results, the procedure used for</i> 	<ul style="list-style-type: none"> • See “Further Information” and “Metal Equivalent Calculation” in main text of press release.

Criteria	JORC Code explanation	Commentary
	<p><i>such aggregation should be stated and some typical examples of such aggregations should be shown in detail.</i></p> <ul style="list-style-type: none"> <i>The assumptions used for any reporting of metal equivalent values should be clearly stated.</i> 	
Relationship between mineralization widths and intercept lengths	<ul style="list-style-type: none"> <i>These relationships are particularly important in the reporting of Exploration Results.</i> <i>If the geometry of the mineralization with respect to the drill hole angle is known, its nature should be reported.</i> <i>If it is not known and only the down hole lengths are reported, there should be a clear statement to this effect (e.g 'down hole length, true width not known').</i> 	<ul style="list-style-type: none"> See reporting of true widths in the body of the press release.
Diagrams	<ul style="list-style-type: none"> <i>Appropriate maps and sections (with scales) and tabulations of intercepts should be included for any significant discovery being reported. These should include, but not be limited to a plan view of drill hole collar locations and appropriate sectional views.</i> 	<ul style="list-style-type: none"> The results of the diamond drilling are displayed in the figures in the announcement.
Balanced reporting	<ul style="list-style-type: none"> <i>Where comprehensive reporting of all Exploration Results is not practicable, representative reporting of both low and high-grades and/or widths should be practiced to avoid misleading reporting of Exploration Results.</i> 	<ul style="list-style-type: none"> All results above 0.1 g/t Au have been tabulated in this announcement. The results are considered representative with no intended bias. Core loss, where material, is disclosed in tabulated drill intersections.
Other substantive exploration data	<ul style="list-style-type: none"> <i>Other exploration data, if meaningful and material, should be reported including (but not limited to): geological observations; geophysical survey results; geochemical survey results; bulk samples – size and method of treatment; metallurgical test results; bulk density, groundwater, geotechnical and rock characteristics; potential deleterious or contaminating substances.</i> 	<ul style="list-style-type: none"> Preliminary testing was reported in January 11, 2024. This established the general metallurgical test procedure for samples from the Sunday Creek deposits and demonstrated the basis for confidence in establishing prospects for economic recovery of contained gold and antimony to three separate products: <ul style="list-style-type: none"> ○ Metallic gold product by gravity recovery ○ Antimony-gold flotation concentrate ○ Pyrite-arsenopyrite-gold flotation concentrate Testing has now been expanded to include samples from additional zones of the mineral deposits and to refine metallurgical processes. The aim was to improve aspects of antimony concentrate production, maximise gold recovery to a high-grade metallic product, and to further investigate the nature of gold occurrence. The work, conducted by ALS Burnie Laboratories, focused on: <ul style="list-style-type: none"> ○ Improving selectivity between sulphide minerals in the antimony flotation stage whilst maintaining high overall gold recovery. ○ Further processing of the flotation concentrates, to assess the metallurgical response of contained gold.

Criteria	JORC Code explanation	Commentary
		<ul style="list-style-type: none"> ○ Mineralogical examination of selected product samples. • It was demonstrated that, with appropriate process conditions, high antimony and gold recovery could be maintained whilst rejecting arsenic and iron sulphides in the first flotation stage. The antimony concentrate produced (~50% Sb, <0.2% As) is deemed to be attractive to the smelter market. • Recovery of antimony to concentrate varied with feed type, and ranged from 83% to 93% for the samples tested from the antimony rich zones. • Additional metallic gold was recovered from the flotation concentrate by gravity separation. • The gold grade of the concentrate is a function of the proportion of feed gold associated with arsenic-iron sulphides, the ratio of gold to antimony in the feed, the gold recovered to the metallic gold product, and the flotation rate of gold in the first flotation stage. • High overall gold recovery was achieved with all samples tested. • <i>Further Work</i> <ul style="list-style-type: none"> ○ Additional characterization testing across deposit zones ○ Locked cycle testing to confirm overall recoveries ○ Multi-stage cleaning optimization to maximize concentrate quality ○ Pilot plant evaluation of larger samples ○ Process plant design studies targeting Q1 2027 completion
Further work	<ul style="list-style-type: none"> • <i>The nature and scale of planned further work (e.g. tests for lateral extensions or depth extensions or large-scale step-out drilling).</i> • <i>Diagrams clearly highlighting the areas of possible extensions, including the main geological interpretations and future drilling areas, provided this information is not commercially sensitive.</i> 	<ul style="list-style-type: none"> • The Company has stated it will drill 200,000 m through 2025 to Q1 2027. • See diagrams in presentation which highlight current and future drill plans.