

SOIL SAMPLING PROGRAMME CONFIRMS CHIKUNDO COPPER SYSTEM

FOUR DRILL-READY TARGETS DEFINED FOR MAIDEN DRILLING PROGRAMME THIS MONTH

Evolution Energy Minerals Limited (ASX:EV1, FSE:P77) (“EV1” or the “Company”) is pleased to report the results of its comprehensive soil geochemistry programme at the Chikundo Copper Project in the Lindi Region of southern Tanzania.

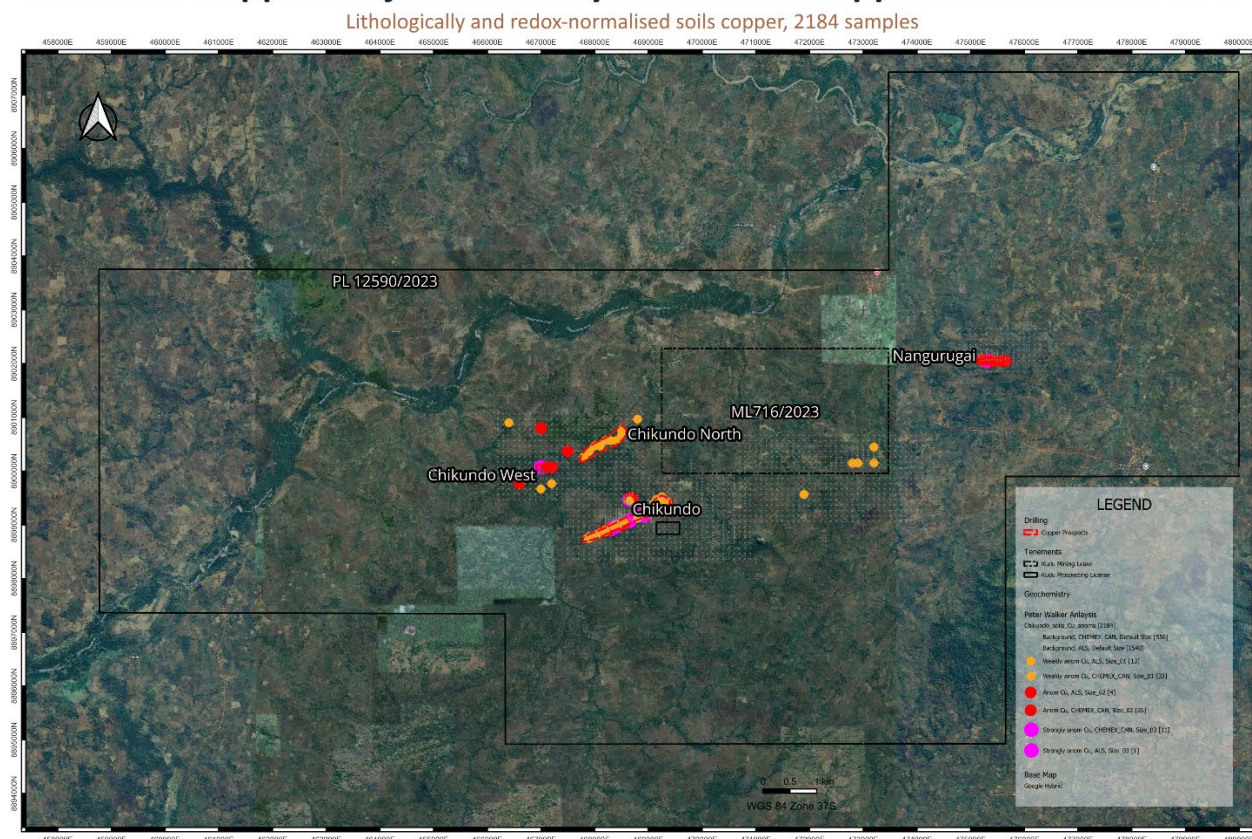
The programme combined 1,558 newly collected soil samples with 626 historical samples, creating a validated dataset of 2,184 samples. Independent interpretation of the results has confirmed four priority copper target areas for drilling, comprising the Chikundo Prospect, Nangurugai and the the Chikundo West and Chikundo North targets. The results significantly enhance the Company’s understanding of the Chikundo copper system and provide multiple drill-ready targets ahead of the imminent maiden drilling programme.

HIGHLIGHTS

- 2,184-sample soil geochemistry programme completed across the Chikundo Copper Project.
- Four priority copper drill targets identified and ranked for drilling: Chikundo Prospect, Nangurugai, Chikundo North and Chikundo West.
- Chikundo Prospect remains the highest-priority target and extends beyond known artisanal copper workings.
- Independent review confirms anomalies are consistent with genuine hydrothermal copper mineralisation.
- Additional targets identified away from known workings demonstrate broader project-scale exploration potential.
- Maiden drilling programme planned to commence this month.

Figure 1: Overview of copper geochemistry, showing the four defined copper prospects

Chikundo Copper Project - True Hydrothermal Copper-in-Soil Anomalies



ASX ANNOUNCEMENT



NEXT STEPS

- The Company is finalising its maiden drilling programme designed to test the Chikundo Prospect, Nangurugai, Chikundo North and Chikundo West target areas.
- Drilling will focus on validating the geochemical anomalies and determining the scale, continuity and style of mineralisation beneath each target area.
- Details of the drilling programme and commencement schedule will be provided in a separate announcement once these details are finalised.

MANAGING DIRECTOR COMMENT

“The results from this programme have significantly increased our confidence in the Chikundo Copper Project. Importantly, the survey has not only confirmed and expanded the mineralised corridor at the Chikundo Prospect but has also confirmed additional compelling targets at Nangurugai, Chikundo North & Chikundo West. With multiple priority targets now defined and ranked, we have rapidly advanced Chikundo from a historical copper occurrence to a drill-ready exploration project. We look forward to commencing drilling and testing the scale and potential of these targets.”

AUTHORISED FOR RELEASE BY THE BOARD OF EVOLUTION ENERGY MINERALS LIMITED

For further information:

Craig Moulton

Executive Director

T: +61 406 932 187

E: info@ev1minerals.com.au

W: www.ev1minerals.com.au

Ticker Code: [ASX:EV1](#)

COMPETENT PERSON STATEMENT

The information in this announcement that relates to Exploration Results is based on, and fairly represents, information and supporting documentation compiled by Mr Craig Moulton, a Competent Person who is a Member of The Australasian Institute of Mining and Metallurgy (AusIMM Membership No. 201115). Mr Moulton is an employee of Evolution Energy Minerals Limited. Mr Moulton has sufficient experience that is relevant to the style of mineralisation and type of deposit under consideration, and to the activity being undertaken, to qualify as a Competent Person as defined in the 2012 Edition of the Australasian Code for Reporting of Exploration Results, Mineral Resources and Ore Reserves (the JORC Code). Mr Moulton consents to the inclusion in this announcement of the matters based on his information in the form and context in which it appears.

Forward-Looking Statements

This release includes forward-looking statements. Forward-looking statements include, but are not limited to, statements concerning the Company's planned exploration programmes and other statements that are not historical facts. When used in this release, the words such as "could", "plan", "estimate", "expect", "anticipate", "intend", "may", "potential", "should", "might" and similar expressions are forward-looking statements. Although the Company believes that its expectations reflected in these forward-looking statements are reasonable, such statements involve known and unknown risks and uncertainties and are subject to factors outside of the Company's control. Accordingly, no assurance can be given that actual results will be consistent with these forward-looking statements.

The Company cautions that forecast timelines are forward-looking statements and subject to a range of risks and uncertainties. These include, but are not limited to, commodity market conditions, funding availability, permitting, offtake negotiations, equipment delivery, commissioning challenges, and operating performance. Accordingly, actual outcomes may differ materially from those stated. Shareholders should not place undue reliance on forward-looking statements, which are based on current expectations and assumptions.

ABOUT EVOLUTION ENERGY MINERALS

Evolution Energy Minerals is an Australian-listed minerals company focused on the exploration and development of critical metals in Africa.

The Company's flagship asset is the **Chilalo Graphite Project in Tanzania**, one of the world's largest and highest-quality flake graphite development projects, supported by extensive metallurgical test work, product qualification programmes and downstream engagement with end-users.

Evolution is also advancing the **Chikundo Copper Project**, targeting high-grade hydrothermal copper mineralisation in southern Tanzania.

Evolution's strategy is to responsibly develop large-scale, long-life assets that support the global energy transition, while working collaboratively with host governments, local communities and strategic partners to deliver sustainable long-term value for shareholders.

EVOLUTION ENERGY MINERALS (ASX: EV1)

Evolution Energy Minerals is an Australian-listed critical minerals company focussed on the exploration and development of critical metals in Tanzania.



Chilalo Graphite Project

- One of the world's largest and highest-quality flake graphite development projects
- Extensive metallurgical test work
- Product qualification & downstream engagement.



Chikundo Copper Project

- Advancing exploration for high-grade, copper-dominant ores
- Drill-ready hydrothermal copper targets



RESPONSIBLE DEVELOPMENT STRATEGY

- Responsibly develop large-scale, long-life assets to support the global energy transition.
- Collaborate with host governments and local communities
- Deliver sustainable long-term value for shareholders



Appendix 1

TECHNICAL GLOSSARY – CHIKUNDO COPPER PROJECT

A-Horizon

The uppermost soil layer, typically containing organic matter and reworked or transported material. Not suitable for geochemical sampling due to surface contamination and lateral movement of fines.

B-Horizon

A subsurface soil layer (~300–500 mm depth) where geochemical elements accumulate through weathering and downward migration. Considered the most reliable horizon for soil sampling in mineral exploration.

Calico Bag

Durable, breathable cotton sampling bags used to store soil samples before sealing inside plastic bags for transport. Suitable for maintaining sample integrity.

Chalcopyrite (CuFeS₂)

A primary copper sulphide mineral and the most important ore mineral of copper. Its presence in artisanal workings or drill core strongly indicates sulphide mineralisation at depth.

Four-Acid Digest (ICP-MS)

A laboratory assay technique using a mixture of nitric, perchloric, hydrofluoric, and hydrochloric acids to dissolve near-total rock material. Followed by ICP-MS (Inductively Coupled Plasma – Mass Spectrometry) analysis. Preferred for multi-element geochemistry due to high accuracy and full digestion of silicate minerals.

Geochemical Pathfinders

Elements associated with, but not necessarily part of, the primary mineralisation (e.g., Bi, Te, Mo, As). These elements provide vectors toward mineralised zones and can highlight extension trends beyond observed copper anomalies.

Grid-Based Sampling

A systematic sampling approach where samples are collected along regularly spaced lines (e.g., 100 m × 100 m). Allows consistent spatial coverage and creation of contour maps for anomaly interpretation.

Gossan

An iron-rich, oxidised weathering product that forms above sulphide mineralisation. Gossans often contain limonite, goethite, hematite and may retain anomalous levels of copper, lead, zinc or pathfinder elements.

Hydrothermal Copper Mineralisation

Copper mineralisation deposited from hot, metal-rich fluids that have circulated through fractures and porous rock. Hydrothermal systems can concentrate copper along structural pathways and are distinct from seafloor-volcanic (VHMS) deposits. The Chikundo system is interpreted as hydrothermal in origin.

ICP-MS (Inductively Coupled Plasma – Mass Spectrometry)

A laboratory instrument used to measure trace and major elements with high precision and low detection limits. Commonly used for exploration geochemistry.

Malachite

A green secondary copper carbonate mineral formed during oxidation of primary copper sulphides. Often the first surface indicator of concealed copper mineralisation.

ASX ANNOUNCEMENT

Oxide Mineralisation

Secondary copper minerals formed in the weathered, near-surface zone where primary copper sulphides have been broken down by oxygen and groundwater. In exploration usage, 'oxide' groups together copper carbonates (such as malachite and azurite), copper silicates (such as chrysocolla) and true copper oxides (such as cuprite). At Chikundo, the copper carbonates are typically seen at surface, with the gossan — dominated by iron oxides replacing the underlying sulphides — sitting beneath them and primary sulphide mineralisation deeper still. Visible oxide copper in outcrop or artisanal workings is often a strong indicator of a larger copper system at depth.

QA/QC (Quality Assurance / Quality Control)

Procedures used to ensure data reliability, including insertion of duplicates, blanks and standards at prescribed ratios (e.g., 1:20). Required for ASX-compliant reporting of geochemical results.

RC Drilling (Reverse Circulation Drilling)

A percussion drilling technique used to generate rock chips for analysis. Ideal for defining the geometry of shallow copper systems and for confirming geochemical anomalies identified by soil sampling.

Soil Anomaly

A statistically elevated concentration of an element (e.g., copper) in soil relative to background levels. Indicates potential underlying bedrock mineralisation or structural controls.

Sulphide Mineralisation

Copper-bearing minerals such as chalcopyrite, bornite or chalcocite that occur below the oxidised zone. Sulphide mineralisation is typically the target of economic extraction.

VTEM (Versatile Time-Domain Electromagnetic Survey)

An airborne geophysical method used to map conductive bodies such as sulphide accumulations or structural features. At Chikundo, VTEM interpretation has been used to identify conductive structures that may host hydrothermal copper mineralisation.

Weathered Profile

The vertical sequence of soils and saprolite produced by long-term weathering. Understanding this profile is essential for determining sampling depth and interpreting soil geochemistry.

Appendix 2 – JORC Code (2012)

SECTION 1: SAMPLING TECHNIQUES AND DATA

Criteria	Commentary
Sampling techniques	A total of 1,558 primary soil samples were collected across the Chikundo, Chikundo North, Chikundo West and Nangurugai prospect areas as part of the Chikundo Copper Project. Sampling targeted the Soil — B-horizon (organic A-horizon removed), collected from depths of 0.3 – 0.5 m below surface. Samples were placed into a calico bag inside a sealed plastic bag and transported for preparation and analysis. Sampling was undertaken to support regional-scale geochemical anomaly definition.
Drilling techniques	Not applicable. No drilling results are reported.
Drill sample recovery	Not applicable. No drilling results are reported.
Logging	Sample site observations — including landform, host material (residual, alluvial, slope, ant hill, gossan, etc.) and the presence of artisanal workings or oxide copper mineralisation — were recorded by sampling personnel at each site. No drill logging is reported.
Sub-sampling techniques and sample preparation	Sample preparation was undertaken by Orelisis Tanzania, Mwanza, Tanzania, where samples were dried, crushed and pulverised prior to dispatch to the primary assay laboratory. The primary laboratory recorded received sample weight (WEI-21) and undertook a pass-75µm screen check on prepared pulps to monitor preparation quality. Field duplicate samples were inserted at a rate of approximately 1 in 20 to assess sub-sampling representivity. Sample preparation is considered appropriate for soil geochemistry at the reported sample density.
Quality of assay data and laboratory tests	Samples were analysed at ALS Laboratories Johannesburg, South Africa (SANAS T0387) using method ME-MS61 — 48-element four-acid digestion, ICP-MS. Over-limit samples for ore-grade base metals were re-assayed by ME-OG62 / Ni-OG62 — ore-grade four-acid digestion, ICP-AES. The four-acid digestion provides a near-total digestion suitable for the target commodities. Quality control comprised the insertion of certified reference materials (CRMs), blanks and field duplicates at an approximate rate of 1 in 20 of primary samples. 89 CRMs, 89 blanks and 91 field duplicates were submitted across 10 laboratory batches. CRMs OREAS 45D and OREAS 13B returned mean results within their certified ±2SD windows across the assayed suite, with the exception of a minor (~5%) positive bias on Cu in 13B. CRM OREAS 14P is a high-grade base-metal standard whose certified values for Ni, Cu, Zn, Fe and S exceed the upper detection limit of the ME-MS61 method; ore-grade re-assays for CRM material were not undertaken, and apparent failures of 14P therefore reflect method saturation rather than laboratory bias. Blanks returned values at or near detection limits, and field duplicate RPDs are within industry norms for values comfortably above the limit of detection. Overall QA/QC performance is considered acceptable and the assay data fit for purpose for exploration reporting.
Verification of sampling and assaying	Sample locations and field observations were recorded by Company personnel using digital field forms and handheld GPS at the time of sampling. Assay data were received electronically from the primary laboratory as Certificates of Analysis (Excel and PDF) and loaded into the project geochemical database. Data validation included reconciliation of submitted sample lists against laboratory receipt, review of CRM and blank performance batch-by-batch, and inspection of duplicate pair RPDs. No adjustments have been made to the reported assay data.
Location of data points	Sample locations were recorded in the field using a handheld Garmin GPSMAP 65 class (or equivalent). Coordinates are reported in WGS84 UTM Zone 37S. Positional accuracy is estimated to be approximately ±3–5 m under normal field conditions. This accuracy is considered appropriate for the reported regional-scale soil geochemistry programme. Topographic control is provided by handheld GPS elevation supported by publicly available digital elevation data.
Data spacing and distribution	Sampling was undertaken on a nominal 100 m × 100 m grid, with local modifications where historical geochemical coverage existed. This spacing is

ASX ANNOUNCEMENT

Criteria	Commentary
	considered appropriate for regional exploration and geochemical anomaly definition and is not intended to support Mineral Resource estimation. No sample compositing has been applied; each reported value represents an individual soil sample.
Orientation of data in relation to geological structure	Sampling was conducted on a systematic orthogonal grid pattern designed to provide broad spatial coverage of the target areas. The orientation of the sampling grid is not considered to introduce any material sampling bias for the purposes of regional geochemical anomaly definition.
Sample security	Samples were collected by Kudu Graphite Limited personnel and securely stored during field operations. Samples were transported to Orelysis Tanzania, Mwanza, Tanzania for preparation and subsequently dispatched to ALS Laboratories Johannesburg, South Africa (SANAS T0387) for analysis. Chain-of-custody documentation was maintained between each transfer point.
Audits or reviews	No external audit completed; internal review of field procedures and QA/QC performance by Company personnel.

SECTION 2: REPORTING OF EXPLORATION RESULTS

Criteria	Commentary
Mineral tenement and land tenure status	The reported exploration results are derived from Prospecting Licence PL 12590/2023 and, to a limited extent, Mining Licence ML 716/2023, located in the Tanzania — Lindi Region — Ruangwa & Nachingwea Districts. The licences are held by Kudu Graphite Limited (Tanzania). Evolution Energy Minerals Limited 84% indirect; Government of Tanzania 16% free-carried. The licences are in good standing and no known impediments exist to ongoing exploration activities.
Exploration done by other parties	Historical exploration within the project area was undertaken by previous operators including IMX Resources (and others) and comprised geological mapping, airborne VTEM EM, magnetic surveys, geochemical sampling and drilling. Historical drilling identified copper mineralisation that assisted in defining the Chikundo exploration target. Recent reinterpretation of historical geophysical datasets has been undertaken by the Company to support drill targeting.
Geology	The Chikundo Prospect lies within the Proterozoic Mozambique Belt and is associated with metasedimentary and metavolcanic rocks. Mineralisation style is interpreted as hydrothermal copper (with Pb–Zn potential), associated with metasedimentary and metavolcanic sequences. Surface expressions supporting the exploration model include gossanous outcrop, artisanal workings and copper oxide minerals (including malachite). Target commodities are copper, lead and zinc.
Drill hole information	Not applicable. No drilling results are reported in this announcement.
Data aggregation methods	No drilling intersections are reported. Soil geochemical results are reported as individual, uncomposited sample assay values together with summary statistics, percentile distributions and threshold-based anomaly interpretations. No metal equivalent values are reported.
Relationship between mineralisation widths and intercept lengths	Not applicable. No drilling intersections are reported.
Diagrams	Plans showing licence locations, soil sample coverage and significant geochemical results accompany this announcement.
Balanced reporting	All soil geochemistry results are held in the Company's project database. Reported summary statistics, distributions and anomaly maps represent the full dataset, including low-tenor and background values, and the Company considers the reported information to represent a balanced summary of the exploration results currently available.
Other substantive exploration data	Other relevant exploration information includes geological mapping, airborne VTEM EM, magnetic surveys, geochemical sampling, drilling, artisanal mining observations and the recently completed soil geochemistry programme comprising 1,558 primary soil samples.
Further work	Integration of soil geochemistry with historical geological and geophysical datasets to refine targets and design future drilling