

ONGOING POSITIVE PROGRESS ON SCOPING STUDY

Highlights

- Scoping Study on track for completion in Q3, CY26
- Plant design and expected product mix substantially completed
- Drilling of SOR07 and SOR08 has commenced
- Results expected to contribute to Mineral Resource Estimate to support Scoping Study

Osmond Resources Limited (ASX: OSM) (Osmond or the Company) is pleased to announce ongoing positive progress at the Orión EU Critical Minerals Project (Orión or the Project).

Scoping Study

The Company continues to progress positively on Scoping Study activities. Plant design and expected product mix is substantially complete. The Company is currently targeting the completion and release of the Scoping Study in Q3, CY26.

Drilling Program

Osmond has commenced drilling SOR-07 and SOR-08 (refer to locations in Figure 1 and 2). These additional drill holes are designed to target extensions of the high-grade area in the ~10 km² area in Zone 1 Resource Target Area (refer Figure 2 below). The results are also expected to contribute to the Mineral Resource Estimate to support the Scoping Study.

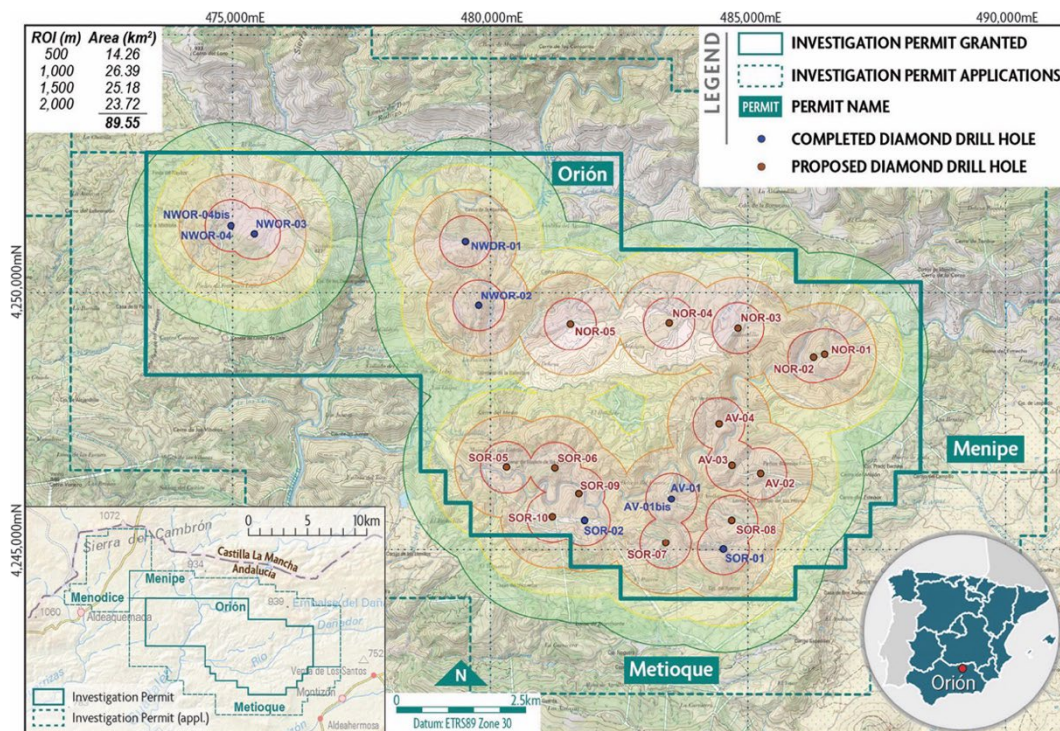


Figure 1: Map showing completed and planned drill holes at Orión EU Critical Minerals Project, including location of current drill holes SOR-07 and SOR-08.

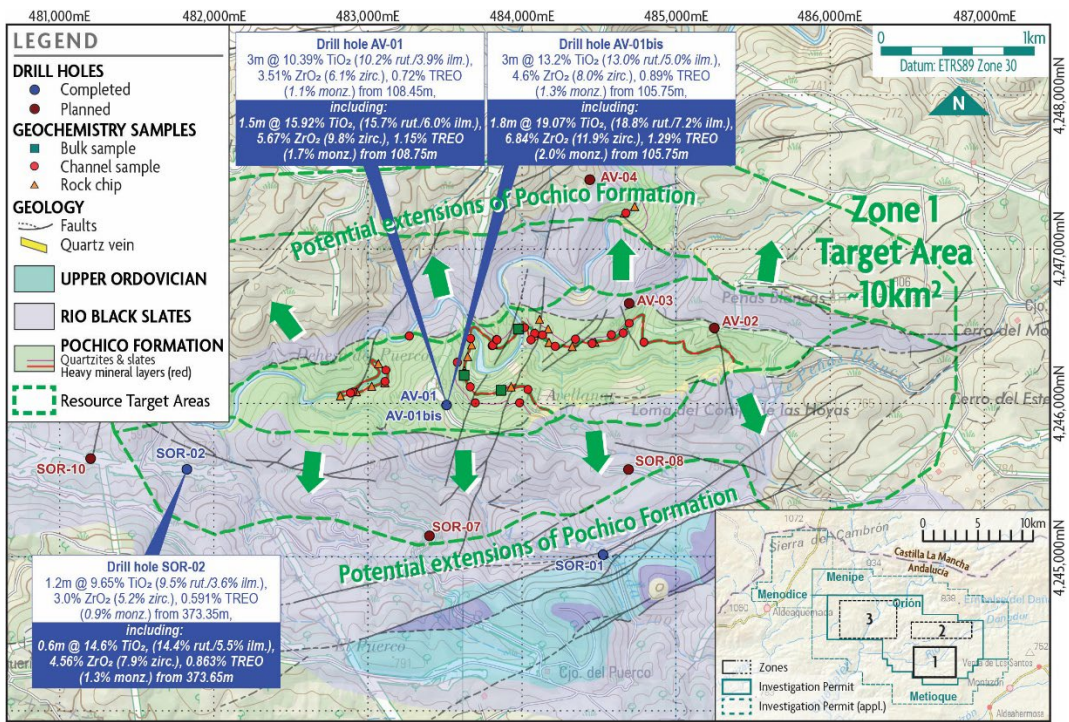


Figure 2 – Map showing Target Area and key initial drill hole results.

-Ends-

Approved for release by the Board of Osmond Resources.

CONTACT

Anthony Hall | Managing Director and CEO
ahall@osmondresources.com.au
 +61 417 466 039

Elvis Jurcevic | Investor Relations
ej@osmondresources.com.au
 +61 408 268 271

Forward Looking Statement

The information in this release includes “forward looking statements”. All statements other than statements of historical fact included in this release regarding the business strategy, plans, goals and objectives are forward looking statements. When used in this release, the words “believe”, “project”, “expect”, “anticipate”, “estimate”, “intend”, “budget”, “target”, “aim”, “strategy”, “estimate”, “plan”, “guidance”, “outlook”, “intend”, “may”, “should”, “could”, “will”, “would”, “will be”, “will continue”, “will likely result” and similar expressions are intended to identify forward looking statements, although not all forward looking statements contain such identifying words. These forward looking statements are based on Osmond’s current expectations and assumptions about future events and are based on currently available information as to the outcome and timing of future events. The reader is cautioned that these forward looking statements are subject to all of the risks and uncertainties, most of which are difficult to predict and many of which are beyond the Company’s control, incident to the extraction of the critical materials the Company intends to produce. These risks include, but are not limited to: limited operating history in the critical minerals’ extraction industry and no revenue from the proposed extraction operations; the need for substantial additional financing to execute the business plan and the Company’s ability to access capital and the financial markets; the Company’s status as an exploration stage company dependent on a single project with no known JORC Code compliant mineral resources or reserves; and other risks. Should one or more of these risks or uncertainties occur, or should underlying assumptions prove incorrect, the actual results and plans could differ materially from those expressed in any forward looking statements. No representation or warranty (express or implied) is made as to, and no reliance should be placed on, any information, including projections, estimates, targets and opinions contained herein, and no liability whatsoever is accepted as to any errors, omissions or misstatements contained herein. The reader is cautioned not to place undue reliance on any forward looking statements, which speak only as of the date of this release. Except as otherwise required by applicable law, the Company disclaims any duty to update and do not intend to update any forward looking statements, all of which are expressly qualified by the statements in this section, to reflect events or circumstances after the date of this Presentation.

ABOUT OSMOND RESOURCES

Osmond Resources Limited (ASX:**OSM**) is an ASX listed company focused on fast-tracking the development of EU Critical Minerals Projects.

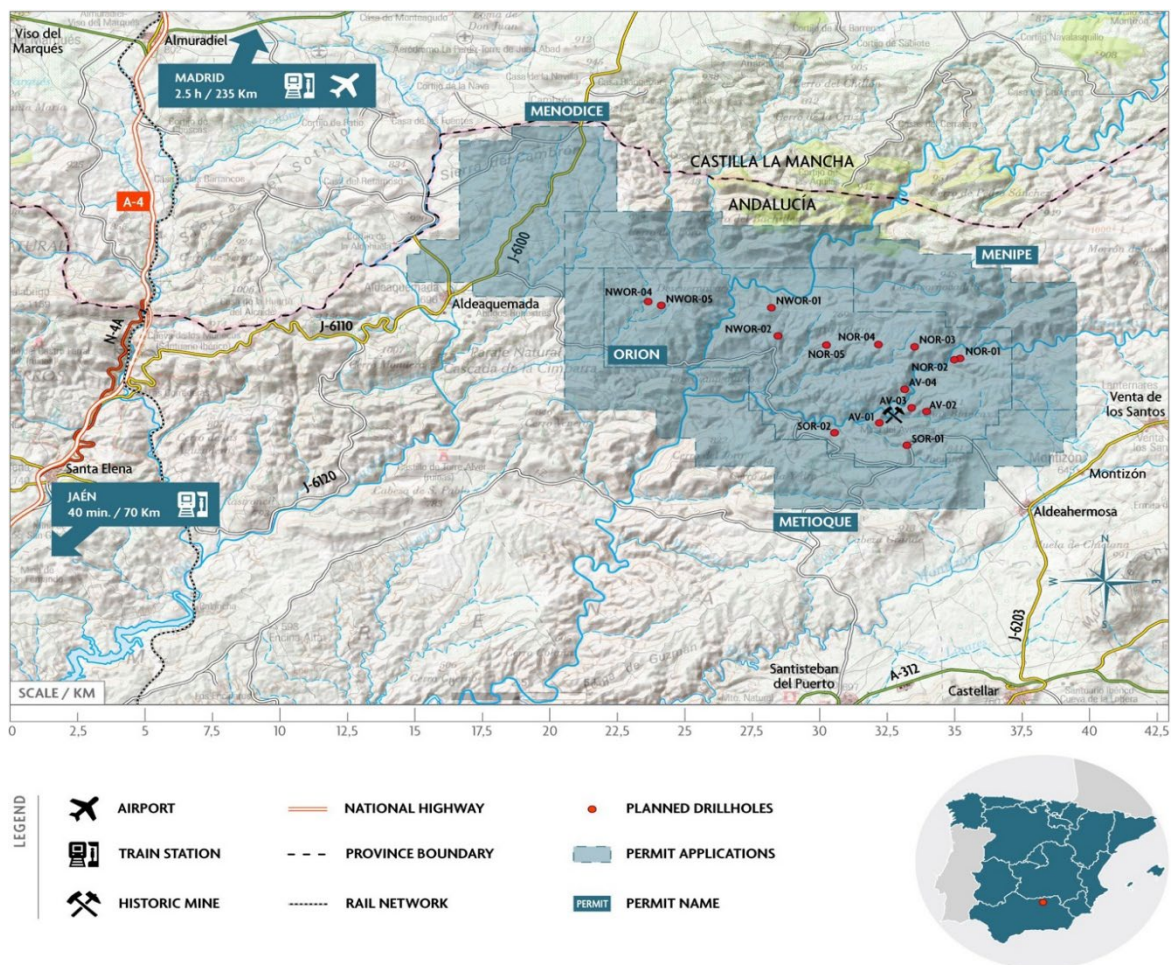
Orión EU Critical Minerals Project, Spain

Upon completion of a Scoping Study the Company will control an 80% interest in 95% of the Orión EU Critical Minerals Project (**the Project**) located in Jaén Province, Andalucía, Southern Spain (refer to location map below). The Project includes 772 Spanish mining units (cuadrículas mineras) covering an area of 232 km².

It is a siliciclastic geological system with various layers rich in critical minerals including rutile (titanium), zirconium, hafnium, and rare earth elements. The Project area was explored for thorium and uranium in the 1950s and 1960s and includes a historic galena mine worked in 1970s.

The Company is targeting primary high-grade rutile, zircon and monazite layers across the entire Project area. The potential grade of the layers is evidenced in bulk rock channel samples that were taken from three different outcrops (150kgs in total) across the Avellanar Zone (Zone 1) with the assay and mineral species' results shown in Table below.

The Company is looking to fast-track development activities and is targeting completion of a Scoping Study in 2H CY26 to take advantage of strong EU regulatory support for in-sourcing production of critical minerals. In operation, the Company will be the only producer of rare earths, titanium, zirconium and hafnium in the EU.



Map showing location of Orión EU Critical Minerals Project

Table – Select modals and oxides from bulk samples and target area drill holes

Element	Mineral/Oxide	Unit	Sample 1	Sample 2	Sample 3	AV-01 [†]	AV-01 bis [§]
Titanium	TiO ₂	%	15.16%	14.04%	14.04%	10.39%	13.20%
	Rutile	%	13.49%	13.36%	13.36%	~10.20%	~13.00%
	Ilmenite	%	6.19%	4.82%	4.82%	~3.90%	~5.00%
Zirconium	ZrO ₂	%	5.57%	5.07%	5.07%	3.51%	4.60%
	Zircon	%	9.79%	8.77%	8.77%	~6.10%	~8.00%
Rare Earths	Monazite	%	1.62%	1.56%	1.56%	~1.10%	~1.30%
	Allanite	%	0.24%	0.02%	0.02%	neg.	neg.
	Xenotime	%	0.04%	0.03%	0.03%	neg.	neg.
	TREO%*	%	1.18%	1.07%	1.07%	0.72%	0.89%
Heavy Minerals**		%	32.8%	29.4%	29.4%	~30%	~40%
Element	Oxide	Unit	Sample 1	Sample 2	Sample 3	AV-01	AV-01bis
Hafnium	HfO ₂	ppm	1,204	1,178	1,178	756	1,020
Lanthanum	La ₂ O ₃	ppm	2,154	1,964	1,964	1,431	1,700
Cerium	CeO ₂	ppm	5,305	4,815	4,815	3,112	3,867
Praseodymium	Pr ₆ O ₁₁	ppm	575	520	520	347	436
Neodymium	Nd ₂ O ₃	ppm	2,049	1,858	1,858	1,209	1,535
Samarium	Sm ₂ O ₃	ppm	366	331	331	218	270
Europium	Eu ₂ O ₃	ppm	28	26	26	18	23
Gadolinium	Gd ₂ O ₃	ppm	259	232	232	151	183
Terbium	Tb ₄ O ₇	ppm	33	30	30	20	23
Dysprosium	Dy ₂ O ₃	ppm	155	142	142	95	113
Holmium	Hm ₂ O ₃	ppm	27	25	25	16	20
Erbium	Er ₂ O ₃	ppm	73	67	67	45	54
Thulium	Tm ₂ O ₃	ppm	11	10	10	7	8
Ytterbium	Yb ₂ O ₃	ppm	79	72	72	48	60
Lutetium	Lu ₂ O ₃	ppm	13	12	12	8	10
Yttrium	Y ₂ O ₃	ppm	689	628	628	487	563

* TREO: Total Rare Earth Oxides - La₂O₃, CeO₂, Pr₆O₁₁, Nd₂O₃, Sm₂O₃, Eu₂O₃, Gd₂O₃, Tb₄O₇, Dy₂O₃, Ho₂O₃, Er₂O₃, Tm₂O₃, Yb₂O₃, Lu₂O₃, Y₂O₃.

** Heavy Minerals – allanite, monazite, xenotime, garnet, titanite, zircon, ilmenite, rutile.

[†] Refer ASX announcement 18 November 2025. Grades quoted for 3m downhole interval (108.45 - 111.45m).

[§] Refer ASX announcement 24 November 2025. Grades quoted for 3m downhole interval (105.75 - 108.75m).

AV-01 and AV-01bis mineral proportions are estimates based on bulk sampling (refer to Appendix B).

Iberian One Project, Spain

The Company owns a 100% interest in the Iberian One Project, located in Segovia Province, central Spain. The project aims to exploit kaolinite and alunite mineralisation to deliver EU critical minerals.

Osmond's current focus is the Orión EU Critical Minerals Project and it is presently considering options with respect to progressing the Iberian One Project.