

15 June 2026

## New Deep Target Identified Increasing Kokoseb's Underground Potential

**Wia Gold Limited** (ASX: WIA) (**Wia** or the **Company**) is pleased to report assay results from 19,819 metres of recent drilling at its 2.93Moz **Kokoseb Gold Project** in Namibia.

Results from twenty-nine Diamond Drill holes (**DD**) have:

- **Identified a new high-grade mineralised horizon beneath the Central Zone.**
- **Extended high-grade mineralisation beyond the current open pit Mineral Resource Estimate (MRE).**
- **Further demonstrated the internal continuity, scale and robustness of the high-grade plunging shoots.**

A further ten Reverse Circulation (**RC**) holes were completed, including eight infill holes within the open pit area and two below the Scoping Study<sup>1</sup> pits in the Southern Zone, validating internal grade continuity.

**Assay results from the 39 drill holes include:**

- **New high-grade target identified in the Central Zone, supporting underground growth potential:**
  - **9.0m @ 10.64 g/t Au from 811.0m, inc. 4.0m @ 22.76 g/t Au in KDD147**
  - **9.0m @ 2.24 g/t Au from 801.0m, inc. 3.0m @ 3.18 g/t Au in KDD137**
- **Strong continuity demonstrated in Central and Southern Zones high-grade plunging shoots and Western Zone deep target:**
  - **10.8m @ 5.43 g/t Au from 322.2m, inc. 4.0m @ 11.10 g/t Au in KDD139**
  - **15.0m @ 2.18 g/t Au from 414.0m in KDD143**
  - **12.0m @ 1.86 g/t Au from 555.0m, inc. 3.0m @ 3.04 g/t Au in KDD152**
  - **8.7m @ 2.66 g/t Au from 648.4m in KDD162**
  - **5.0m @ 4.51 g/t Au from 666.0m, inc. 1.0m @ 20.24 g/t Au in KDD148**
  - **9.0m @ 2.59 g/t Au from 575.0m, inc. 4.0m @ 4.83 g/t Au in KDD156**
  - **19.0m @ 1.52 g/t Au from 281.0m, inc. 3.0m @ 3.09 g/t Au in KRC580**

**An updated MRE is currently being calculated and will encompass all historical sampling up to and including the period covered by this announcement.**

**The Kokoseb Definitive Feasibility Study (DFS) remains on schedule for completion in Q3 2026.**

Six diamond drill rigs are currently advancing the definition drilling of high-grade zones to support future underground resource potential.

<sup>1</sup> Refer ASX Announcement dated 30 September 2025

**Commenting on the results, Wia Managing Director and CEO, Henk Diederichs, said:**

*“The discovery of a new high-grade target beneath the Central Zone, together with the strong continuity demonstrated in the existing high-grade shoots in both the Central and Southern Zones, further strengthens Kokoseb’s underground potential. Mineralisation has been extended to 580 metres of strike below the Scoping Study pit shell, and both high-grade shoots remain open at depth. With six diamond rigs operating, we are continuing underground resource definition ahead of an updated MRE and the Definitive Feasibility Study in Q3 CY2026, with increasing confidence in the long-term scale and value of the deposit.”*

### **New deep target identified beneath the Central Zone pit shell**

Following the identification of a significant high-grade target zone previously reported at Central Zone<sup>2</sup>, further drilling has identified a second high-grade target zone, increasing the potential for future underground development (Figure 1).

Diamond drill hole **KDD137** has intersected a wide mineralised zone of 54.1m at 1.25 g/t Au (unconstrained) including significant intercepts of 17.0m at 2.16 g/t Au with a higher-grade component of 4.0m at 3.06 g/t Au and of 9.0m at 2.24 g/t Au with a higher-grade component of 4.0m at 3.06 g/t Au. 75m to the south, **KDD147** has intersected 62m of mineralisation at 2.08 g/t Au (unconstrained) including a significant high-grade intercept of 9.0m at 10.64 g/t Au.

This new target zone comprises thick gold mineralisation located approximately 700m below the surface and 350m below the Scoping Study pit shell. Previously reported KDD086, from the same zone, had returned an unconstrained intercept of 47m at 1.49 g/t Au<sup>3</sup>.

Significant intercepts from the new zone include:

**17.0m @ 2.16 g/t Au from 769.0m, inc. 4.0m @ 3.92 g/t Au in KDD137**

**9.0m @ 2.24 g/t Au from 801.0m, inc. 4.0m @ 3.06 g/t Au in KDD137**

**9.0m @ 10.64 g/t Au from 811.0m in KDD147**

**4.0m @ 2.84 g/t Au from 832.0m in KDD147**

<sup>2</sup> Refer to ASX announcement 4 March 2026

<sup>3</sup> Refer to ASX announcement 22 October 2025

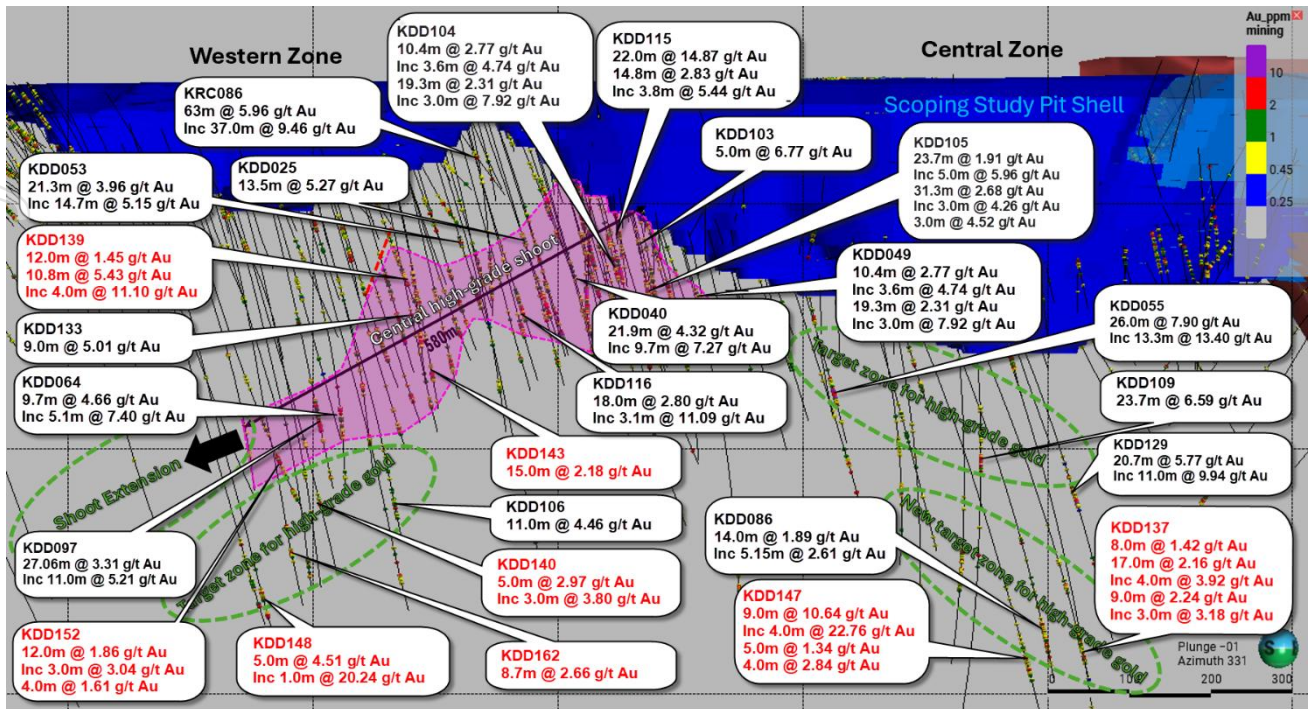


Figure 1 – Long section view showing the Central high-grade shoot and the new deep target zones beneath the Scoping Study pit. Location of high-grade intercepts reported in this announcement are shown in red<sup>4</sup> (intercepts in black previously reported)<sup>5</sup>

## Central and Southern Zone high-grade plunging shoots continue to demonstrate strong continuity

Step out diamond drill hole **KDD152** (Figure 1) has extended the down plunge extent of the Central Zone high-grade plunging shoot to 580m below the Scoping Study pit shell with a significant intercept of 12.0m at 1.86 g/t Au, including a higher-grade component of 3.0m at 3.04 g/t Au.

Internal grade continuity of the shoot is further supported with significant mineralisation intersected by diamond drill holes **KDD139**, **KDD143** and **KDD162**.

Diamond drill holes **KDD140** and **KDD148** have also reinforced a previously reported high-grade target zone beneath the Central Zone high-grade plunging shoot<sup>6</sup>.

In the Southern Zone, diamond drill hole **KDD156** has extended the high-grade plunging shoot by a further 80m, to 480m below the Scoping Study pit shell, returning 9.0m at 2.59 g/t Au, including 4.0m at 4.83 g/t Au.

The current diamond drilling program remains focused on incremental step-out holes designed to test the volumetric extent of these zones and further define internal grade variability.

<sup>4</sup> Intercept calculated using 0.5 g/t cut-off and 2m maximum consecutive internal low grade

<sup>5</sup> Refer to ASX announcements 15 May 2023, 29 May 2023, 12 March 2024, 3 July 2025, 8 December 2025, 4 March 2026

<sup>6</sup> Refer to ASX announcement dated 4 March 2026

Significant high-grade intercepts include:

- 10.8m @ 5.43 g/t Au from 322.2m, inc. 4.0m @ 11.10 g/t Au in KDD139
- 15.0m @ 2.18 g/t Au from 414.0m in KDD143
- 12.0m @ 1.86 g/t Au from 555.0m, inc. 3.0m @ 3.04 g/t Au in KDD152
- 8.7m @ 2.66 g/t Au from 648.4m in KDD162
- 5.0m @ 4.51 g/t Au from 666.0m, inc. 1.0m @ 20.24 g/t Au in KDD148
- 9.0m @ 2.59 g/t Au from 575.0m, inc. 4.0m @ 4.83 g/t Au in KDD156
- 5.0m @ 2.97 g/t Au from 599.0m, inc. 3.0m @ 3.80 g/t Au in KDD140

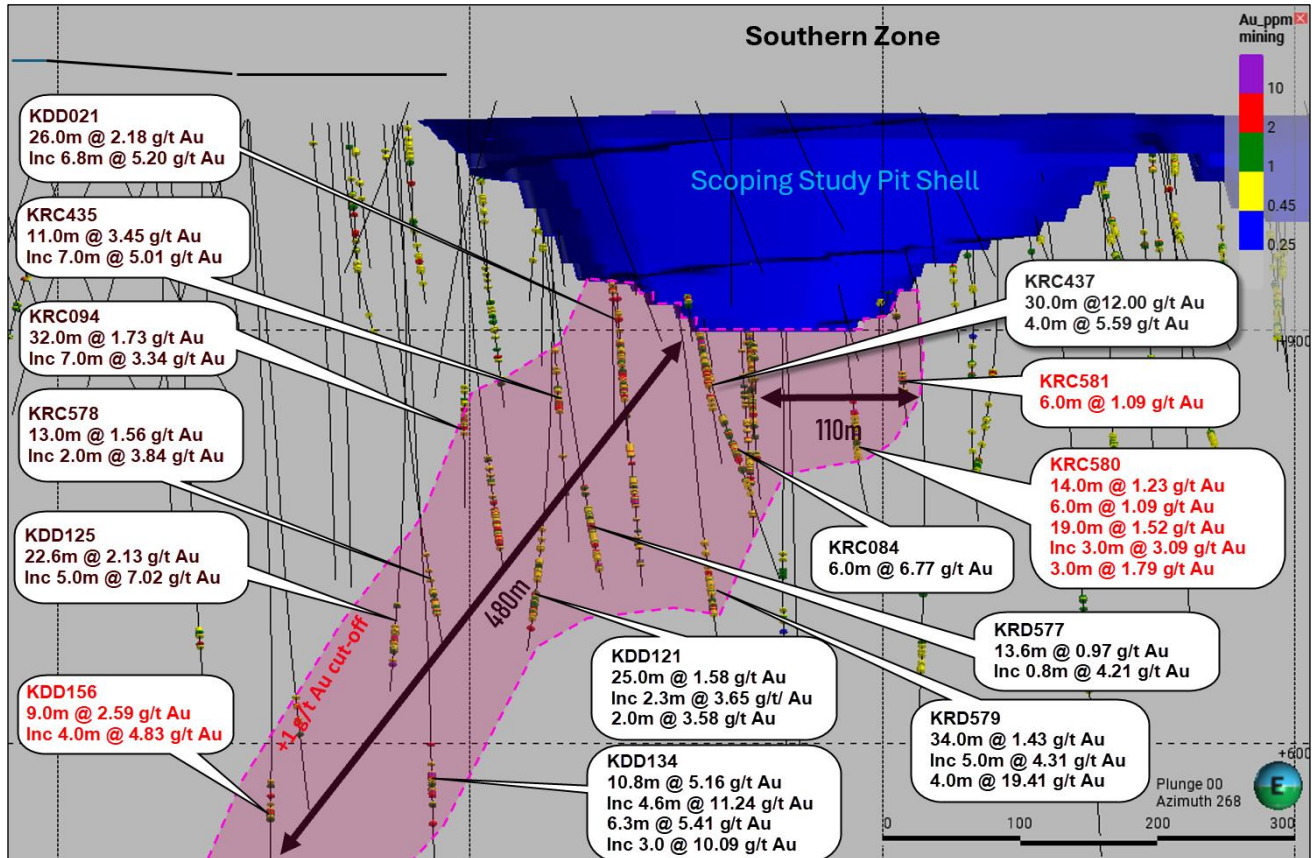


Figure 2 – Long section view at the Southern Zone plunging shoot. Location of high-grade intercepts reported in this announcement are shown in red<sup>7</sup> (intercepts in black previously reported)<sup>8</sup>

## Reverse Circulation Drilling

RC drilling focused on testing the shallowest mineralised extensions at the base of the MRE, targeting the future resource growth. The current RC program has now been completed, and the rig has demobilised from site.

<sup>7</sup> Intercept calculated using 0.5 g/t cut-off grade and 2m maximum consecutive internal low grade

<sup>8</sup> Refer to ASX announcements dated 15 May 2023, 29 May 2023, 12 March 2024, 3 July 2025, 8 Dec 2025, 4 March 2026

Significant intercepts from the last RC holes include the following:

**19.0m @ 1.52 g/t Au from 278.0m, inc. 3.0m @ 3.09 g/t Au in KRC580**

**5.0m @ 1.52 g/t Au from 223.0m in KRC582**

**7.0m @ 1.52 g/t Au from 246.0m in KRC584**

**6.0m @ 1.76 g/t Au from 240.0m in KRC586**

**11.0m @ 1.99 g/t Au from 169.0m in KRC587**

**13.0m @ 1.47 g/t Au from 241.0m in KRC587**

**7.0m @ 1.46 g/t Au from 302.0m in KRC587**

**7.0m @ 2.01 g/t Au from 322.0m in KRC587**

**13.0m @ 1.03 g/t Au from 279.0m in KRC588**

**17.0m @ 1.31 g/t Au from 304.0m in KRC589**

For personal use only



This announcement has been authorised for release by the board of directors of Wia Gold Limited.

### Contact details

Henk Diederichs  
Managing Director and CEO  
+61 8 6288 4252

Louise Mason-Rutherford/George Pope  
Burson Buchanan  
+44 20 7466 5000  
[wia@buchanancomms.co.uk](mailto:wia@buchanancomms.co.uk)

### Reference to previous ASX Announcements

In relation to previously reported exploration results included in this announcement, the dates of which are referenced, the Company confirms that it is not aware of any new information or data that materially affects the information included in those announcements.

In relation to the information in this announcement that relates to the Mineral Resource Estimate for the Kokoseb Gold Project that was reported on 16 July 2025, other than subsequently released drilling results, Wia confirms that it is not aware of any new information or data that materially affects the information included in that release. All material assumptions and technical parameters underpinning the estimates in that ASX release continue to apply and have not materially changed.

### About The Kokoseb Gold Project

The Kokoseb Gold Deposit is located in the north-west of Namibia, a country that is a well-recognised mining jurisdiction, with an established history as a significant producer of uranium, diamonds, gold and base metals. The Kokoseb gold deposit is situated 320km by road from the capital Windhoek.

Kokoseb lies within Exclusive Prospecting Licence (EPL) 4818, which is held under joint venture (Wia 80%) with the state-owned mining company Epangelo. The EPL 484, near the town of Okombahe is part of Wia's larger Damaran Project, which consist of 12 tenements with a total area of over 2,700km<sup>2</sup>.

An updated Indicated and Inferred Mineral Resource Estimate of 2.93Moz @ 1.0 g/t Au, at a cut-off grade of 0.5 g/t Au, including a higher-grade gold portion of 2.07Moz @ 1.4 g/t Au using a cut-off grade of 0.8 g/t Au, was announced on 16 July 2025.

The Kokoseb Scoping Study, completed in September 2025 (refer to ASX announcement dated 30 September 2025), confirmed Kokoseb as an outstanding gold project with an initial mine life of over 11 years and average production of approximately 177 koz per annum for the first five years. At a consensus gold price of US\$2,600/oz the Project delivers a post-tax NPV<sub>5%</sub> of US\$646 million and a post-tax IRR of 38%, with a payback period of 1.8 years. The current gold price environment continues to significantly enhance the overall project economics.<sup>10</sup>

The Company is advancing Kokoseb through a DFS, targeted for completion in H2 2026, and towards its development as Namibia's next major gold mine.

---

<sup>10</sup> Further detail on the Scoping Study, including all the material assumptions on which the production targets and forecast financial information are based, is included in the Announcement released to the ASX on 30 September 2025. The Company confirms that the material assumptions underpinning the production targets and forecast financial information derived from the production targets in that Announcement continue to apply and have not materially changed.

The location of Kokoseb and the Company's Namibian Projects is shown in Figure 4 below.

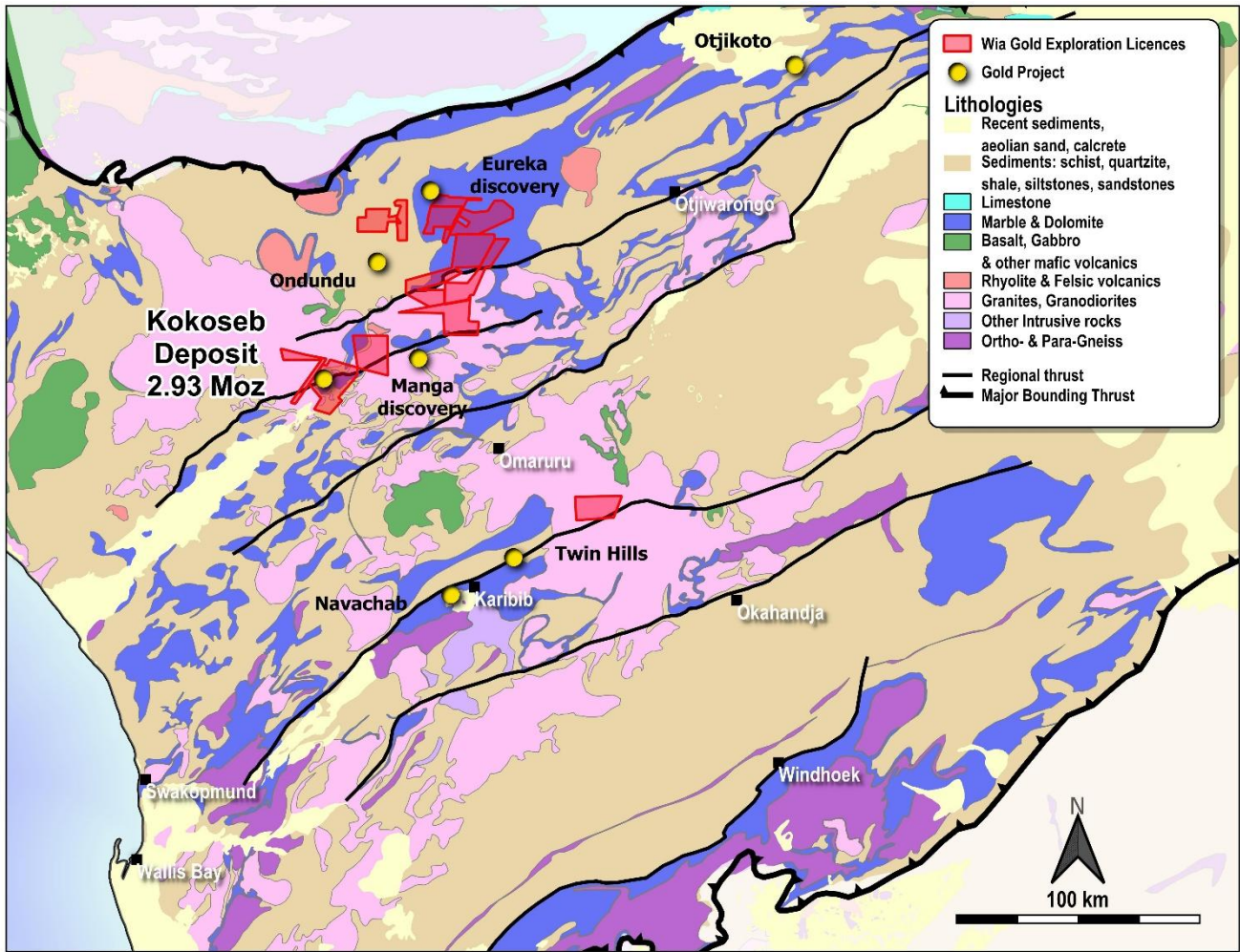


Figure 4 – Location of Wia's Namibia Projects

Cut-off Au g/t	Indicated			Inferred			TOTAL		
	Tonnes (Mt)	Au g/t	Au Moz	Tonnes (Mt)	Au g/t	Au Moz	Tonnes (Mt)	Au g/t	Au Moz
0.18	110	0.67	2.37	78	0.62	1.6	188	0.65	3.92
0.30	82.6	0.82	2.18	58	0.75	1.4	141	0.79	3.58
0.50	54.2	1.04	1.81	35	0.99	1.1	89	1.0	2.93
0.80	29.1	1.39	1.30	17	1.4	0.77	46	1.4	2.07

Table 1 – Kokoseb Indicated and Inferred Mineral Resource estimates for selected cut-off grades. The estimates in this table are rounded to reflect their precision; rounding errors are apparent. They are based on drilling data available at 30th June 2025. The Competent Person responsible for the data informing the estimates is Pierrick Couderc, Wia Exploration Manager. The Competent Person responsible for resource modelling is Jonathon Abbott MAIG, Director of Matrix Resource Consultants Pty Ltd. The Resources are constrained by an optimised pit shell using a metal price of US\$2,300/oz Au and process recovery of 92%.

### Competent Person's Statement

The Mineral Resource Estimate referred to in this announcement was first disclosed in accordance with the requirements of ASX Listing Rule 5.8 in the Company's ASX announcement dated 16 July 2025, titled "Kokoseb Mineral Resource Estimate increases to 2.93Moz gold". The Company confirms that it is not aware of any new information or data that materially affects the information included in that announcement and that all material assumptions and technical parameters underpinning the estimate in the previous announcement continue to apply and have not materially changed. The announcement is available to view on [www.wiagold.com.au](http://www.wiagold.com.au)

The information in this announcement that relates to exploration results at the Kokoseb Gold Project is based on information compiled by Company geologists and reviewed by Mr Pierrick Couderc, in his capacity as Exploration Manager of Wia Gold Limited. Mr. Couderc is a member of both the Australian Institute of Mining and Metallurgy and the Australian Institute of Geoscientists and has sufficient experience which is relevant to the style of mineralisation and type of deposit under consideration and to the activity which he is undertaking to qualify as a Competent Person as defined in the 2012 edition of the Australasian Code for Reporting of Exploration Results, Mineral Resources and Ore Reserves. Mr. Couderc consents to the inclusion in the report of the matters based upon the information in the form and context in which it appears.

For personal use only

## Appendix 1. Kokoseb – Location of diamond and RC drillholes

Hole ID	Easting	Northing	RL	Length (m)	Dip (°)	Azi (°)
KDD135	525782	7659887	1067	183	-55	270
KDD136	525993	7658304	1058	186	-55	280
KDD137	525905	7660797	1071	836	-60	90
KDD138	525899	7658427	1056	126	-60	75
KDD139	525667	7660214	1066	372	-60	120
KDD140	525376	7660098	1064	701	-60	120
KDD141	525682	7658274	1053	330	-60	71
KDD142	525802	7660343	1069	354	-60	120
KDD143	525569	7660220	1068	477	-59	126
KDD144	525492	7658306	1052	624	-60	80
KDD145	525464	7660037	1064	545	-60	120
KDD146	525365	7659900	1063	627	-60	120
KDD147	525812	7660825	1071	921	-60	90
KDD148	525349	7660127	1064	708	-60	120
KDD149	525671	7660519	1069	603	-60	120
KDD150	525552	7658306	1052	537	-60	80
KDD151	525615	7657933	1055	588	-60	80
KDD152	525339	7660038	1064	645	-60	120
KDD153	525106	7659512	1062	900	-60	80
KDD154	525493	7658401	1053	522	-60	80
KDD155	525606	7660552	1069	678	-60	120
KDD156	525583	7657927	1055	615	-60	80
KDD157	525650	7660703	1069	774	-60	120
KDD158	525480	7658500	1054	510	-60	80
KDD159	525282	7659809	1063	651	-60	120
KDD160	525816	7660575	1071	501	-60	120
KDD161	525670	7657875	1057	486	-60	80
KDD162	525354	7660101	1064	711	-60	120
KRD579	525609	7658220	1051	441	-61	80
KRC580	525658	7658233	1053	430	-59	79
KRC581	525630	7658349	1053	370	-61	81
KRC582	525614	7658448	1053	370	-60	80
KRC583	525576	7658586	1053	370	-61	73
KRC584	525581	7658546	1054	390	-60	80
KRC585	525626	7658667	1054	275	-58	78
KRC586	525955	7660583	1074	390	-60	120
KRC587	526040	7660516	1074	347	-60	120
KRC588	525999	7660608	1074	370	-60	120
KRC589	526064	7660662	1074	355	-60	119

**Appendix 2. Diamond and RC drill holes gold assays, using a cut-off grade of 0.2 g/t gold and max 2m consecutive internal waste material**

Hole ID	From (m)	To (m)	Gold g/t
KDD135	142.0	142.6	0.32
KDD135	142.6	143.1	0.19
KDD135	143.1	143.6	0.07
KDD135	143.6	144.6	1.07
KDD135	144.6	145.6	1.90
KDD135	145.6	146.6	0.25
KDD135	146.6	147.6	0.08
KDD135	147.6	148.6	0.27
KDD135	148.6	149.6	0.37
KDD137	635.0	636.0	0.25
KDD137	636.0	637.0	0.08
KDD137	637.0	638.0	0.33
KDD137	642.0	643.0	0.24
KDD137	643.0	644.0	0.04
KDD137	644.0	645.0	0.06
KDD137	645.0	646.0	0.24
KDD137	646.0	647.0	0.05
KDD137	647.0	648.0	0.27
KDD137	648.0	649.0	0.04
KDD137	649.0	650.0	0.33
KDD137	650.0	651.0	0.24
KDD137	651.0	652.0	0.31
KDD137	663.0	664.0	0.20
KDD137	664.0	665.0	0.26
KDD137	665.0	666.0	0.14
KDD137	666.0	667.0	0.15
KDD137	667.0	668.0	0.68
KDD137	668.0	669.0	0.06
KDD137	669.0	670.0	0.56
KDD137	670.0	671.1	0.46
KDD137	671.1	672.7	0.02
KDD137	672.7	673.2	0.03
KDD137	673.2	674.0	0.51
KDD137	694.0	695.0	0.83
KDD137	695.0	696.0	1.19
KDD137	696.0	697.0	0.26
KDD137	700.0	701.0	3.65
KDD137	701.0	702.0	0.13
KDD137	702.0	703.0	0.97
KDD137	703.0	704.0	4.42
KDD137	704.0	705.0	0.46
KDD137	705.0	706.0	0.95
KDD137	706.0	707.0	0.11
KDD137	707.0	708.0	0.70
KDD137	708.0	709.0	0.09
KDD137	709.0	710.0	0.16
KDD137	710.0	711.0	0.26
KDD137	711.0	712.0	9.03
KDD137	712.0	713.0	1.39
KDD137	713.0	714.0	0.29
KDD137	714.0	715.0	0.02
KDD137	715.0	716.0	0.03
KDD137	716.0	717.0	0.29
KDD137	722.0	723.0	0.22
KDD137	723.0	724.0	0.09
KDD137	724.0	725.0	0.41
KDD137	725.0	726.0	0.40
KDD137	761.0	762.0	0.33
KDD137	762.0	763.0	0.21
KDD137	763.0	764.0	0.18
KDD137	764.0	765.0	0.89
KDD137	765.0	766.0	0.46
KDD137	766.0	767.0	0.19
KDD137	767.0	768.0	0.12
KDD137	768.0	769.0	0.22
KDD137	769.0	770.0	0.91
KDD137	770.0	771.0	0.70
KDD137	771.0	772.0	0.50
KDD137	772.0	773.0	4.42
KDD137	773.0	774.0	4.57
KDD137	774.0	775.0	4.75

Hole ID	From (m)	To (m)	Gold g/t
KDD137	775.0	776.0	1.94
KDD137	776.0	777.0	1.28
KDD137	777.0	778.0	0.27
KDD137	778.0	779.0	1.11
KDD137	779.0	780.0	1.39
KDD137	780.0	781.0	7.56
KDD137	781.0	782.0	1.26
KDD137	782.0	783.0	0.67
KDD137	783.0	784.0	3.78
KDD137	784.0	785.0	0.36
KDD137	785.0	786.0	1.19
KDD137	786.0	786.6	0.10
KDD137	786.6	788.3	0.02
KDD137	788.3	789.0	0.89
KDD137	789.0	790.0	0.26
KDD137	790.0	791.0	0.64
KDD137	791.0	792.0	0.26
KDD137	792.0	793.0	0.46
KDD137	793.0	794.0	1.56
KDD137	794.0	795.0	0.67
KDD137	795.0	796.0	0.58
KDD137	796.0	797.0	0.56
KDD137	797.0	798.0	0.25
KDD137	798.0	799.0	0.02
KDD137	799.0	800.0	0.28
KDD137	800.0	801.0	0.39
KDD137	801.0	802.0	6.38
KDD137	802.0	803.0	1.50
KDD137	803.0	804.0	0.32
KDD137	804.0	805.0	4.05
KDD137	805.0	806.0	0.20
KDD137	806.0	807.0	5.29
KDD137	807.0	808.0	1.38
KDD137	808.0	809.0	0.33
KDD137	809.0	810.0	0.75
KDD137	810.0	811.0	0.14
KDD137	811.0	812.0	0.24
KDD139	212.0	213.0	0.30
KDD139	213.0	214.0	0.14
KDD139	214.0	215.0	0.31
KDD139	227.0	228.0	0.30
KDD139	228.0	229.0	0.18
KDD139	229.0	230.0	0.92
KDD139	230.0	231.0	0.44
KDD139	231.0	232.0	0.42
KDD139	247.0	248.0	0.32
KDD139	248.0	249.0	0.25
KDD139	249.0	250.0	0.35
KDD139	258.0	259.0	0.31
KDD139	259.0	260.0	0.14
KDD139	260.0	261.0	0.64
KDD139	261.0	262.0	0.14
KDD139	262.0	263.0	1.47
KDD139	263.0	264.0	0.01
KDD139	264.0	265.0	0.21
KDD139	265.0	266.0	0.22
KDD139	266.0	267.0	0.79
KDD139	267.0	267.5	0.51
KDD139	293.8	295.0	0.40
KDD139	295.0	296.0	1.08
KDD139	296.0	297.0	0.24
KDD139	297.0	297.6	0.34
KDD139	297.6	298.3	0.13
KDD139	298.3	299.1	0.06
KDD139	299.1	300.0	1.12
KDD139	302.4	303.0	0.37
KDD139	303.0	304.0	1.41
KDD139	304.0	305.0	1.14
KDD139	305.0	305.7	0.49
KDD139	305.7	306.4	0.63
KDD139	306.4	306.9	0.01

For personal use only

Hole ID	From (m)	To (m)	Gold g/t
KDD139	306.9	307.4	0.52
KDD139	307.4	308.0	0.35
KDD139	308.0	309.0	0.92
KDD139	309.0	310.0	1.22
KDD139	310.0	311.0	5.90
KDD139	311.0	312.0	1.98
KDD139	312.0	313.0	1.71
KDD139	313.0	314.0	0.57
KDD139	314.0	315.0	1.30
KDD139	315.0	316.0	0.03
KDD139	316.0	317.0	0.13
KDD139	317.0	318.0	0.37
KDD139	318.0	319.0	0.08
KDD139	319.0	320.0	0.46
KDD139	320.0	321.6	0.05
KDD139	321.6	322.2	0.22
KDD139	322.2	323.0	2.05
KDD139	323.0	324.0	1.37
KDD139	324.0	325.0	4.90
KDD139	325.0	326.0	13.69
KDD139	326.0	327.0	8.00
KDD139	327.0	328.0	0.35
KDD139	328.0	329.0	22.38
KDD139	329.0	330.0	0.48
KDD139	330.0	331.0	0.78
KDD139	331.0	332.0	0.91
KDD139	332.0	333.0	4.05
KDD139	333.0	334.9	0.05
KDD139	334.9	335.4	0.05
KDD139	335.4	336.0	0.32
KDD139	336.0	337.0	0.19
KDD139	337.0	338.0	0.91
KDD139	338.0	339.0	0.40
KDD139	339.0	339.6	0.74
KDD139	339.6	340.3	0.57
KDD139	340.3	342.3	0.19
KDD139	342.3	343.0	0.12
KDD139	343.0	344.0	1.17
KDD140	503.0	504.0	0.29
KDD140	504.0	505.0	0.19
KDD140	505.0	506.0	0.12
KDD140	506.0	507.0	1.94
KDD140	511.0	512.0	0.53
KDD140	512.0	513.0	0.57
KDD140	513.0	514.0	0.17
KDD140	514.0	515.0	0.47
KDD140	515.0	516.0	0.57
KDD140	516.0	517.0	0.52
KDD140	517.0	518.0	0.98
KDD140	518.0	518.8	0.58
KDD140	518.8	519.6	0.39
KDD140	519.6	520.6	0.19
KDD140	520.6	521.4	0.33
KDD140	521.4	522.3	0.35
KDD140	522.3	523.0	0.25
KDD140	523.0	524.0	0.29
KDD140	524.0	525.0	0.03
KDD140	525.0	526.0	0.12
KDD140	526.0	527.0	0.51
KDD140	527.0	528.0	0.16
KDD140	528.0	529.3	0.06
KDD140	529.3	530.0	0.40
KDD140	530.0	531.0	0.07
KDD140	531.0	532.0	0.04
KDD140	532.0	533.0	1.04
KDD140	533.0	534.0	0.46
KDD140	534.0	535.0	0.34
KDD140	535.0	536.0	0.01
KDD140	536.0	537.1	0.09
KDD140	537.1	538.0	0.30
KDD140	538.0	539.0	1.21
KDD140	539.0	600.0	5.35
KDD140	600.0	601.0	1.10
KDD140	601.0	602.0	4.94
KDD140	602.0	603.0	2.25
KDD140	603.0	604.0	0.26
KDD141	165.3	166.1	0.16
KDD141	166.1	166.6	0.29
KDD141	166.6	167.6	0.97
KDD141	167.6	209.0	0.31

Hole ID	From (m)	To (m)	Gold g/t
KDD141	210.0	211.0	0.10
KDD141	211.0	212.0	0.15
KDD141	212.0	213.0	0.36
KDD141	213.0	214.0	0.03
KDD141	214.0	215.0	0.03
KDD141	215.0	216.0	0.43
KDD141	216.0	217.0	0.72
KDD141	217.0	218.0	0.39
KDD141	224.0	225.0	0.42
KDD141	225.0	226.0	0.31
KDD141	226.0	227.0	0.05
KDD141	227.0	228.0	0.05
KDD141	228.0	229.0	0.27
KDD141	229.0	230.0	0.13
KDD141	230.0	231.0	1.02
KDD141	231.0	232.0	0.20
KDD141	232.0	233.0	0.39
KDD141	233.0	234.0	0.25
KDD141	234.0	235.0	1.87
KDD141	235.0	236.0	0.47
KDD141	236.0	237.0	0.04
KDD141	237.0	238.0	0.24
KDD141	238.0	239.0	1.12
KDD141	239.0	240.0	0.60
KDD141	240.0	240.9	1.22
KDD141	240.9	241.9	0.86
KDD141	241.9	242.9	1.15
KDD141	242.9	243.9	0.42
KDD141	243.9	244.9	0.57
KDD141	244.9	245.9	0.27
KDD141	245.9	246.9	3.27
KDD141	246.9	247.9	1.76
KDD141	247.9	248.9	0.23
KDD141	248.9	249.9	0.47
KDD141	249.9	250.9	0.28
KDD141	250.9	251.9	0.49
KDD141	251.9	252.9	3.47
KDD141	252.9	253.9	0.39
KDD141	253.9	254.9	0.34
KDD141	254.9	255.9	0.35
KDD141	255.9	256.9	0.27
KDD141	256.9	257.9	0.88
KDD141	257.9	258.9	0.82
KDD141	258.9	259.9	0.69
KDD141	259.9	260.9	0.22
KDD141	260.9	261.9	0.92
KDD141	261.9	262.9	1.14
KDD141	262.9	263.9	0.18
KDD141	263.9	264.9	0.20
KDD141	264.9	265.9	0.30
KDD141	265.9	266.9	0.09
KDD141	266.9	267.4	0.37
KDD141	267.4	268.4	0.35
KDD141	268.4	269.4	1.65
KDD141	269.4	270.4	0.28
KDD141	270.4	271.4	0.41
KDD141	271.4	272.4	0.10
KDD141	272.4	273.4	0.75
KDD141	273.4	274.6	1.74
KDD141	274.6	275.6	0.14
KDD141	275.6	276.6	0.49
KDD141	276.6	277.6	0.10
KDD141	277.6	278.6	2.69
KDD141	278.6	279.3	0.43
KDD142	170.0	170.7	8.11
KDD142	170.7	171.5	0.21
KDD142	171.5	172.0	0.59
KDD142	172.0	173.0	0.68
KDD142	173.0	174.0	0.15
KDD142	174.0	175.0	0.33
KDD142	175.0	176.0	0.04
KDD142	176.0	177.0	0.38
KDD142	177.0	178.0	0.62
KDD142	178.0	179.0	0.42
KDD142	179.0	180.0	0.11
KDD142	180.0	181.0	0.24
KDD142	181.0	182.0	0.62
KDD142	182.0	183.0	0.63
KDD142	183.0	184.0	0.18
KDD142	184.0	185.0	0.10

Hole ID	From (m)	To (m)	Gold g/t
KDD142	226.0	227.0	0.27
KDD142	227.0	228.0	0.31
KDD142	228.0	229.0	0.27
KDD142	229.0	230.0	0.22
KDD142	230.0	231.0	0.08
KDD142	231.0	232.0	0.12
KDD142	232.0	232.6	0.21
KDD142	232.6	233.4	0.30
KDD142	233.4	234.2	0.03
KDD142	234.2	235.0	0.05
KDD142	235.0	236.0	1.21
KDD142	236.0	237.0	0.36
KDD142	237.0	238.0	1.14
KDD142	238.0	239.0	1.30
KDD142	239.0	240.0	0.60
KDD142	265.0	265.5	1.88
KDD142	265.5	266.5	2.20
KDD142	266.5	267.5	0.70
KDD142	267.5	268.5	1.58
KDD142	272.5	273.5	0.77
KDD142	273.5	274.5	0.15
KDD142	274.5	275.5	1.29
KDD142	277.2	278.2	1.45
KDD142	278.2	279.2	0.85
KDD142	279.2	280.2	1.24
KDD142	280.2	280.7	0.54
KDD142	280.7	282.2	0.01
KDD142	282.2	283.2	0.44
KDD142	283.2	284.2	0.92
KDD142	284.2	285.2	0.35
KDD142	285.2	286.2	1.44
KDD142	286.2	287.2	1.52
KDD142	287.2	288.2	0.39
KDD142	288.2	288.7	0.37
KDD142	292.1	293.1	0.69
KDD142	293.1	294.3	0.02
KDD142	294.3	295.1	0.41
KDD142	295.1	295.6	3.06
KDD142	301.5	302.5	1.03
KDD142	302.5	303.5	1.45
KDD142	303.5	304.5	3.81
KDD142	304.5	305.5	0.79
KDD142	305.5	306.5	0.22
KDD142	309.5	310.5	1.68
KDD142	310.5	311.5	0.09
KDD142	311.5	312.4	1.50
KDD142	312.4	313.4	0.66
KDD143	297.0	298.0	0.28
KDD143	298.0	299.0	0.18
KDD143	299.0	300.0	0.24
KDD143	300.0	301.0	0.01
KDD143	301.0	302.0	1.23
KDD143	302.0	303.0	0.08
KDD143	303.0	304.0	0.02
KDD143	304.0	305.0	0.25
KDD143	305.0	306.0	0.97
KDD143	331.0	332.0	0.32
KDD143	332.0	333.0	0.07
KDD143	333.0	334.0	0.03
KDD143	334.0	335.0	0.28
KDD143	335.0	336.0	0.45
KDD143	336.0	337.0	0.55
KDD143	337.0	338.0	0.31
KDD143	338.0	339.0	0.01
KDD143	339.0	340.0	0.33
KDD143	340.0	341.0	0.15
KDD143	341.0	342.0	0.06
KDD143	342.0	343.0	0.40
KDD143	358.4	359.3	0.21
KDD143	359.3	360.3	0.01
KDD143	360.3	361.0	0.77
KDD143	368.4	369.0	0.48
KDD143	369.0	370.0	0.17
KDD143	370.0	370.5	2.35
KDD143	414.0	415.0	1.32
KDD143	415.0	416.0	4.00
KDD143	416.0	417.0	0.41
KDD143	417.0	418.0	5.45
KDD143	418.0	419.0	1.91
KDD143	419.0	420.0	0.55

Hole ID	From (m)	To (m)	Gold g/t
KDD143	420.0	421.0	0.10
KDD143	421.0	422.0	4.12
KDD143	422.0	423.0	3.60
KDD143	423.0	424.0	2.80
KDD143	424.0	425.0	3.47
KDD143	425.0	426.0	1.91
KDD143	426.0	427.0	1.21
KDD143	427.0	428.0	1.35
KDD143	428.0	429.0	0.56
KDD143	429.0	430.0	0.48
KDD144	484.0	485.0	0.27
KDD144	485.0	486.0	0.06
KDD144	486.0	487.0	0.25
KDD144	500.0	501.0	0.55
KDD144	501.0	502.0	0.48
KDD144	502.0	503.0	0.19
KDD144	503.0	504.0	0.46
KDD144	504.0	505.0	0.69
KDD144	505.0	506.0	0.45
KDD144	506.0	507.0	0.06
KDD144	507.0	508.0	2.02
KDD144	508.0	508.5	0.10
KDD144	508.5	509.3	0.06
KDD144	509.3	510.3	0.26
KDD144	519.9	520.9	1.26
KDD144	520.9	521.9	0.55
KDD144	521.9	522.9	0.10
KDD144	522.9	523.9	0.11
KDD144	523.9	524.9	0.24
KDD144	534.9	535.9	0.58
KDD144	535.9	536.9	2.14
KDD144	536.9	537.9	0.25
KDD144	561.9	562.9	0.20
KDD144	562.9	563.9	0.48
KDD144	563.9	564.9	1.83
KDD144	564.9	565.9	0.29
KDD144	565.9	566.9	1.14
KDD144	566.9	567.9	3.25
KDD144	567.9	568.9	1.73
KDD144	568.9	569.9	0.32
KDD144	569.9	570.5	0.10
KDD144	570.5	571.5	0.46
KDD144	571.5	572.5	0.19
KDD144	572.5	573.3	0.20
KDD144	573.3	574.0	0.48
KDD144	574.0	575.0	0.34
KDD144	575.0	576.0	0.63
KDD144	576.0	577.0	0.29
KDD144	577.0	578.0	0.47
KDD144	578.0	579.0	2.73
KDD144	579.0	580.0	1.18
KDD144	580.0	581.0	0.46
KDD144	581.0	582.0	1.04
KDD144	582.0	583.0	0.27
KDD144	583.0	584.0	0.32
KDD144	584.0	585.0	0.19
KDD144	585.0	586.0	0.25
KDD144	586.0	587.0	0.26
KDD144	587.0	588.0	0.37
KDD144	588.0	589.0	0.87
KDD145	259.0	260.0	0.49
KDD145	260.0	261.0	0.10
KDD145	261.0	262.0	0.46
KDD145	266.0	267.0	0.21
KDD145	267.0	268.0	0.36
KDD145	268.0	268.7	0.29
KDD145	274.9	275.9	0.33
KDD145	275.9	276.4	0.02
KDD145	276.4	278.5	0.01
KDD145	278.5	279.0	0.37
KDD145	279.0	280.0	0.25
KDD145	280.0	281.0	1.30
KDD145	281.0	282.0	0.64
KDD145	282.0	283.0	0.08
KDD145	283.0	284.0	0.01
KDD145	284.0	285.0	0.48
KDD145	285.0	286.0	0.08
KDD145	286.0	287.0	0.39
KDD145	287.0	288.0	0.31
KDD145	288.0	288.5	0.46

Hole ID	From (m)	To (m)	Gold g/t
KDD145	288.5	290.5	0.02
KDD145	290.5	292.1	0.25
KDD145	292.1	293.1	0.58
KDD145	293.1	294.1	0.22
KDD145	294.1	294.6	0.05
KDD145	294.6	295.1	0.09
KDD145	295.1	296.1	0.52
KDD145	306.1	307.1	0.89
KDD145	307.1	308.1	1.48
KDD145	308.1	309.1	1.69
KDD145	309.1	310.1	0.15
KDD145	310.1	311.1	0.14
KDD145	311.1	312.1	0.45
KDD145	312.1	313.1	1.00
KDD145	313.1	314.1	0.10
KDD145	314.1	314.9	0.66
KDD145	406.8	407.3	1.21
KDD145	407.3	408.3	1.00
KDD145	408.3	409.1	1.10
KDD146	290.1	291.1	0.30
KDD146	291.1	292.1	0.12
KDD146	292.1	293.1	0.59
KDD146	296.1	297.1	0.34
KDD146	297.1	298.1	0.17
KDD146	298.1	299.1	0.13
KDD146	299.1	299.6	0.37
KDD146	299.6	300.1	0.08
KDD146	300.1	300.6	0.01
KDD146	300.6	301.6	0.25
KDD146	301.6	302.6	0.44
KDD146	302.6	303.6	0.20
KDD146	303.6	304.6	0.16
KDD146	304.6	305.6	0.24
KDD146	305.6	306.6	0.65
KDD146	306.6	307.6	1.48
KDD146	307.6	308.6	0.64
KDD146	308.6	309.6	0.57
KDD146	309.6	310.6	0.06
KDD146	310.6	311.6	0.02
KDD146	311.6	312.6	0.38
KDD146	312.6	313.5	0.26
KDD146	313.5	314.0	0.87
KDD146	314.0	315.0	0.92
KDD146	315.0	315.7	0.96
KDD146	315.7	316.7	0.01
KDD146	316.7	317.5	0.01
KDD146	317.5	318.5	0.23
KDD146	318.5	319.0	0.01
KDD146	319.0	319.6	0.01
KDD146	319.6	320.6	0.51
KDD146	320.6	321.6	0.46
KDD146	321.6	322.1	0.19
KDD146	322.1	322.7	0.35
KDD146	426.0	426.5	1.54
KDD146	426.5	427.0	0.19
KDD146	427.0	428.0	0.75
KDD146	428.0	428.6	0.23
KDD146	428.6	430.2	0.07
KDD146	430.2	431.0	0.25
KDD146	431.0	431.9	0.31
KDD147	707.0	708.0	1.78
KDD147	708.0	709.0	0.05
KDD147	709.0	710.0	0.62
KDD147	710.0	711.0	0.07
KDD147	711.0	712.0	0.32
KDD147	763.0	764.0	0.85
KDD147	764.0	765.0	0.02
KDD147	765.0	766.0	0.01
KDD147	766.0	767.0	0.22
KDD147	767.0	768.0	0.39
KDD147	774.0	775.0	0.28
KDD147	775.0	776.0	0.20
KDD147	776.0	777.0	0.14
KDD147	777.0	778.0	0.41
KDD147	778.0	779.0	0.71
KDD147	782.0	783.0	0.44
KDD147	783.0	784.0	0.03
KDD147	784.0	785.0	0.29
KDD147	785.0	786.0	0.57
KDD147	791.0	792.0	0.61

Hole ID	From (m)	To (m)	Gold g/t
KDD147	792.0	793.0	0.76
KDD147	793.0	794.0	0.21
KDD147	797.0	798.0	0.42
KDD147	798.0	799.0	0.19
KDD147	799.0	800.0	1.24
KDD147	800.0	801.0	0.36
KDD147	801.0	802.0	1.14
KDD147	802.0	803.0	0.09
KDD147	803.0	804.0	0.52
KDD147	804.0	805.0	0.20
KDD147	805.0	806.0	0.20
KDD147	806.0	807.0	0.18
KDD147	807.0	808.0	0.26
KDD147	808.0	809.0	0.06
KDD147	809.0	810.0	0.22
KDD147	810.0	811.0	0.35
KDD147	811.0	812.0	0.57
KDD147	812.0	813.0	0.21
KDD147	813.0	814.0	0.43
KDD147	814.0	815.0	82.30
KDD147	815.0	816.0	3.32
KDD147	816.0	817.0	0.36
KDD147	817.0	818.0	5.05
KDD147	818.0	819.0	2.86
KDD147	819.0	820.0	0.62
KDD147	820.0	820.5	0.25
KDD147	820.5	821.9	0.07
KDD147	821.9	823.0	0.42
KDD147	823.0	824.0	0.89
KDD147	824.0	825.0	0.89
KDD147	825.0	826.0	1.01
KDD147	826.0	827.0	2.96
KDD147	827.0	828.0	0.96
KDD147	828.0	829.0	0.32
KDD147	829.0	830.5	0.16
KDD147	830.5	831.0	0.09
KDD147	831.0	832.0	0.27
KDD147	832.0	833.0	1.65
KDD147	833.0	834.0	0.75
KDD147	834.0	835.0	3.23
KDD147	835.0	836.0	5.72
KDD147	840.0	841.0	0.59
KDD147	841.0	842.0	0.07
KDD147	842.0	843.0	0.55
KDD147	843.0	844.0	0.21
KDD147	844.0	845.0	1.01
KDD147	845.0	846.0	0.37
KDD147	851.0	852.0	0.92
KDD147	852.0	853.0	1.94
KDD147	853.0	854.0	0.35
KDD148	471.5	472.3	0.28
KDD148	472.3	473.0	0.02
KDD148	473.0	474.0	0.03
KDD148	474.0	475.0	0.21
KDD148	475.0	476.0	0.05
KDD148	476.0	477.0	0.03
KDD148	477.0	478.0	1.25
KDD148	478.0	478.8	0.35
KDD148	478.8	479.6	0.25
KDD148	666.0	667.0	20.24
KDD148	667.0	668.0	0.26
KDD148	668.0	669.0	0.74
KDD148	669.0	670.0	0.30
KDD148	670.0	671.0	1.03
KDD148	671.0	672.0	0.01
KDD148	672.0	673.0	0.03
KDD148	673.0	674.0	0.41
KDD148	674.0	675.0	0.77
KDD148	675.0	676.0	0.26
KDD148	676.0	677.0	0.37
KDD148	677.0	678.0	1.35
KDD148	688.6	689.4	2.72
KDD148	689.4	690.0	0.67
KDD148	690.0	691.0	0.58
KDD149	491.0	492.0	0.20
KDD149	492.0	493.0	0.32
KDD149	493.0	494.0	0.17
KDD149	494.0	495.0	0.22
KDD149	507.4	508.2	1.00
KDD149	508.2	509.0	0.25

Hole ID	From (m)	To (m)	Gold g/t
KDD149	509.0	509.6	0.02
KDD149	509.6	510.2	1.06
KDD149	510.2	511.1	0.61
KDD149	511.1	513.1	0.21
KDD149	513.1	515.0	0.03
KDD149	515.0	515.5	0.03
KDD149	515.5	516.0	0.20
KDD149	516.0	517.0	0.47
KDD150	364.0	365.0	0.74
KDD150	365.0	366.0	0.31
KDD150	366.0	367.0	0.28
KDD150	367.0	368.0	0.44
KDD150	368.0	369.0	0.03
KDD150	369.0	370.0	0.96
KDD150	378.0	379.0	1.26
KDD150	379.0	380.0	0.20
KDD150	380.0	381.0	0.12
KDD150	381.0	382.0	1.05
KDD150	382.0	383.0	0.11
KDD150	383.0	384.0	0.37
KDD150	384.0	385.0	1.85
KDD150	388.0	389.0	0.21
KDD150	389.0	390.0	0.22
KDD150	390.0	391.0	0.36
KDD150	391.0	392.0	0.49
KDD150	392.0	393.0	0.20
KDD150	409.0	410.0	0.30
KDD150	410.0	411.0	0.08
KDD150	411.0	412.0	0.37
KDD150	412.0	413.0	0.22
KDD150	413.0	414.0	0.58
KDD150	417.0	418.0	0.32
KDD150	418.0	419.0	0.16
KDD150	419.0	420.0	0.60
KDD150	420.0	421.0	1.24
KDD150	421.0	422.0	1.16
KDD150	422.0	423.0	0.60
KDD150	423.0	424.0	0.92
KDD150	424.0	425.0	0.01
KDD150	425.0	426.0	0.05
KDD150	426.0	427.0	0.23
KDD150	427.0	428.0	0.24
KDD150	467.0	468.0	0.57
KDD150	468.0	469.0	0.91
KDD150	469.0	470.0	4.21
KDD150	470.0	471.0	9.42
KDD150	471.0	472.0	2.65
KDD150	472.0	473.0	0.95
KDD150	473.0	474.0	0.29
KDD150	474.0	475.0	0.35
KDD150	475.0	476.0	0.48
KDD150	476.0	477.0	0.21
KDD150	477.0	478.0	0.94
KDD150	478.0	479.0	1.70
KDD151	487.0	488.0	0.92
KDD151	488.0	489.0	0.05
KDD151	489.0	490.0	0.22
KDD151	490.0	491.0	0.07
KDD151	491.0	492.0	0.22
KDD151	492.0	493.0	0.15
KDD151	493.0	494.0	0.10
KDD151	494.0	494.5	2.41
KDD151	494.5	495.0	2.53
KDD151	495.0	496.0	0.49
KDD151	505.0	506.0	0.27
KDD151	506.0	507.0	0.47
KDD151	507.0	508.0	0.05
KDD151	508.0	509.0	0.25
KDD151	509.0	510.0	0.91
KDD151	510.0	510.5	0.39
KDD152	427.3	428.0	0.35
KDD152	428.0	429.0	0.23
KDD152	429.0	430.0	0.57
KDD152	433.0	434.0	0.26
KDD152	434.0	435.0	0.64
KDD152	435.0	436.0	0.05
KDD152	436.0	437.0	0.20
KDD152	437.0	438.0	0.21
KDD152	438.0	439.0	0.08
KDD152	439.0	440.0	0.06

Hole ID	From (m)	To (m)	Gold g/t
KDD152	440.0	441.0	0.21
KDD152	441.0	442.0	0.21
KDD152	442.0	442.9	0.43
KDD152	442.9	443.7	0.43
KDD152	443.7	444.3	0.66
KDD152	444.3	445.1	0.66
KDD152	445.1	446.0	0.27
KDD152	494.8	495.8	0.79
KDD152	495.8	496.8	0.01
KDD152	496.8	497.8	0.13
KDD152	497.8	498.8	0.29
KDD152	498.8	499.7	0.10
KDD152	499.7	500.2	0.44
KDD152	500.2	500.8	0.05
KDD152	500.8	501.5	0.33
KDD152	501.5	502.0	1.35
KDD152	502.0	503.0	0.42
KDD152	506.0	507.0	0.30
KDD152	507.0	508.0	0.07
KDD152	508.0	509.0	0.82
KDD152	509.0	510.0	0.52
KDD152	510.0	511.0	0.40
KDD152	511.0	512.0	1.25
KDD152	512.0	513.0	0.29
KDD152	550.0	551.0	0.32
KDD152	551.0	551.6	0.49
KDD152	551.6	552.2	0.09
KDD152	552.2	553.0	0.19
KDD152	553.0	553.7	0.42
KDD152	553.7	554.3	0.27
KDD152	554.3	555.0	0.24
KDD152	555.0	556.0	0.92
KDD152	556.0	557.0	2.57
KDD152	557.0	558.0	2.55
KDD152	558.0	559.0	4.01
KDD152	559.0	560.0	1.37
KDD152	560.0	561.0	1.64
KDD152	561.0	561.7	0.89
KDD152	561.7	562.5	1.37
KDD152	562.5	563.2	0.05
KDD152	563.2	564.1	3.47
KDD152	564.1	564.7	0.15
KDD152	564.7	565.7	1.07
KDD152	565.7	566.5	2.15
KDD152	566.5	567.0	2.62
KDD152	578.0	579.0	0.55
KDD152	579.0	580.0	0.60
KDD152	580.0	581.0	0.08
KDD152	581.0	582.0	0.08
KDD152	582.0	583.0	0.21
KDD152	583.0	584.0	0.19
KDD152	584.0	585.0	0.65
KDD152	585.0	586.0	0.05
KDD152	586.0	587.0	0.35
KDD152	587.0	588.0	0.18
KDD152	588.0	589.0	0.10
KDD152	589.0	590.0	1.52
KDD152	590.0	591.0	1.17
KDD152	591.0	592.0	1.84
KDD152	592.0	593.0	1.92
KDD152	593.0	594.3	0.03
KDD152	594.3	595.0	0.20
KDD152	595.0	596.0	0.31
KDD152	611.0	612.0	4.24
KDD152	612.0	613.0	0.14
KDD152	613.0	614.0	0.51
KDD152	614.0	615.0	0.06
KDD152	615.0	616.0	0.65
KDD152	616.0	617.0	0.35
KDD152	617.0	618.0	1.44
KDD152	618.0	619.0	0.55
KDD152	619.0	620.0	0.54
KDD152	620.0	621.0	0.23
KDD152	621.0	622.0	1.84
KDD152	622.0	623.0	4.17
KDD152	623.0	624.0	0.32
KDD152	624.0	625.0	0.03
KDD152	625.0	626.0	0.55
KDD152	626.0	627.0	0.16
KDD152	627.0	628.0	0.23

Hole ID	From (m)	To (m)	Gold g/t
KDD152	628.0	629.0	1.69
KDD154	384.0	385.0	0.26
KDD154	385.0	386.0	0.20
KDD154	386.0	387.0	0.39
KDD154	387.0	388.0	0.20
KDD154	388.0	389.0	0.64
KDD154	389.0	390.0	0.48
KDD154	390.0	391.0	1.88
KDD154	391.0	392.0	0.17
KDD154	392.0	393.0	5.98
KDD154	393.0	394.0	0.21
KDD154	394.0	395.0	1.45
KDD154	398.0	399.0	1.36
KDD154	399.0	400.0	0.66
KDD154	400.0	401.0	0.50
KDD154	401.0	402.0	0.70
KDD154	402.0	403.0	0.81
KDD154	403.0	404.0	0.28
KDD154	404.0	405.0	0.05
KDD154	405.0	406.0	0.17
KDD154	406.0	407.0	0.40
KDD154	407.0	408.0	0.71
KDD154	408.0	409.0	1.66
KDD154	409.0	410.0	1.55
KDD154	410.0	411.0	0.99
KDD154	411.0	412.0	1.74
KDD154	412.0	413.0	1.42
KDD154	413.0	414.0	0.30
KDD154	466.0	467.0	0.56
KDD154	467.0	468.0	0.24
KDD154	468.0	469.0	0.20
KDD154	469.0	470.0	0.17
KDD154	470.0	471.0	0.50
KDD154	471.0	472.0	0.20
KDD154	472.0	473.0	0.26
KDD154	473.0	474.0	0.32
KDD154	474.0	475.0	0.19
KDD154	475.0	476.0	0.38
KDD154	476.0	477.0	0.25
KDD154	477.0	478.0	0.55
KDD154	478.0	479.0	0.53
KDD154	479.0	480.0	0.34
KDD154	480.0	481.0	0.41
KDD154	481.0	482.0	0.14
KDD154	482.0	483.0	0.59
KDD154	483.0	484.0	0.48
KDD154	484.0	485.0	0.51
KDD154	485.0	486.0	0.77
KDD154	486.0	487.0	0.30
KDD154	491.0	492.0	0.45
KDD154	492.0	493.0	0.31
KDD154	493.0	494.0	0.26
KDD155	499.0	500.0	0.26
KDD155	500.0	501.0	0.35
KDD155	501.0	502.0	0.24
KDD155	502.0	502.6	0.09
KDD155	502.6	503.2	2.23
KDD155	503.2	504.9	0.05
KDD155	504.9	505.6	1.05
KDD155	533.2	534.0	0.20
KDD155	534.0	535.0	0.33
KDD155	535.0	536.0	0.11
KDD155	536.0	537.0	0.07
KDD155	537.0	538.0	0.45
KDD155	538.0	539.0	0.38
KDD155	543.4	544.0	0.32
KDD155	544.0	545.0	0.09
KDD155	545.0	546.0	0.23
KDD155	546.0	547.0	0.49
KDD155	590.8	591.3	2.12
KDD155	591.3	592.0	0.69
KDD155	592.0	593.0	0.89
KDD155	593.0	593.8	0.51
KDD156	550.5	551.0	0.27
KDD156	551.0	552.0	0.58
KDD156	554.9	555.5	2.00
KDD156	555.5	556.0	0.15
KDD156	556.0	557.0	0.04
KDD156	557.0	558.0	0.25
KDD156	558.0	559.0	0.14

Hole ID	From (m)	To (m)	Gold g/t
KDD156	559.0	559.7	0.13
KDD156	559.7	560.6	0.31
KDD156	560.6	561.1	0.32
KDD156	561.1	562.0	0.03
KDD156	562.0	563.0	0.20
KDD156	563.0	564.0	3.47
KDD156	569.5	570.5	0.22
KDD156	570.5	571.0	0.82
KDD156	571.0	572.0	0.29
KDD156	575.0	576.0	0.68
KDD156	576.0	577.0	4.96
KDD156	577.0	578.0	1.12
KDD156	578.0	579.0	9.50
KDD156	579.0	580.0	3.76
KDD156	580.0	581.0	1.48
KDD156	581.0	582.0	0.94
KDD156	582.0	583.0	0.28
KDD156	583.0	583.5	0.05
KDD156	583.5	584.0	1.24
KDD156	584.0	585.0	0.29
KDD157	688.0	689.0	7.13
KDD157	689.0	690.0	3.00
KDD157	690.0	691.0	0.27
KDD157	691.0	692.0	0.41
KDD157	692.0	693.0	1.62
KDD157	693.0	694.0	0.32
KDD157	694.0	695.0	0.34
KDD157	695.0	696.0	0.60
KDD157	696.0	697.0	0.34
KDD157	697.0	698.0	0.29
KDD157	698.0	698.5	0.84
KDD157	710.0	711.0	0.50
KDD157	711.0	712.0	0.17
KDD157	712.0	713.0	0.17
KDD157	713.0	714.0	2.68
KDD157	714.0	715.0	0.41
KDD157	715.0	716.0	0.76
KDD157	716.0	717.0	2.64
KDD157	717.0	718.0	0.36
KDD157	718.0	719.0	0.82
KDD157	719.0	720.0	1.89
KDD157	720.0	721.0	1.19
KDD157	721.0	723.0	0.37
KDD157	723.0	724.0	0.36
KDD157	724.0	725.0	0.59
KDD157	725.0	726.0	13.88
KDD157	726.0	727.0	0.50
KDD157	727.0	728.0	0.48
KDD157	728.0	729.0	0.29
KDD157	729.0	730.0	0.13
KDD157	730.0	731.0	0.22
KDD157	731.0	732.0	0.51
KDD157	732.0	733.0	0.44
KDD157	733.0	734.0	0.15
KDD157	734.0	735.0	0.68
KDD157	735.0	736.0	0.31
KDD157	736.0	737.0	0.51
KDD157	737.0	738.0	9.44
KDD158	401.7	402.7	1.94
KDD158	402.7	403.7	1.17
KDD158	403.7	404.7	0.50
KDD158	404.7	405.7	1.39
KDD158	405.7	406.7	0.38
KDD158	464.0	465.0	0.32
KDD158	465.0	466.0	0.24
KDD158	466.0	467.0	0.06
KDD158	467.0	468.0	0.50
KDD158	468.0	469.0	0.32
KDD158	469.0	470.0	0.21
KDD158	470.0	471.0	0.93
KDD158	471.0	472.0	0.39
KDD158	472.0	473.0	0.20
KDD158	473.0	474.0	1.29
KDD158	474.0	475.0	0.49
KDD158	475.0	476.0	0.14
KDD158	476.0	477.0	0.22
KDD158	477.0	478.0	0.45
KDD158	478.0	478.9	0.53
KDD158	478.9	479.4	0.85
KDD158	479.4	480.4	0.78

For personal use only

Hole ID	From (m)	To (m)	Gold g/t
KDD158	480.4	481.4	1.23
KDD158	481.4	482.0	0.77
KDD158	482.0	483.1	0.22
KDD158	483.1	484.1	0.55
KDD158	484.1	484.6	0.13
KDD158	484.6	485.4	0.23
KDD159	412.8	413.8	0.34
KDD159	413.8	414.8	0.15
KDD159	414.8	415.8	0.22
KDD159	415.8	416.8	0.69
KDD159	416.8	417.8	0.44
KDD159	417.8	418.8	0.17
KDD159	418.8	419.6	0.84
KDD159	419.6	420.6	0.24
KDD159	420.6	421.6	0.35
KDD159	421.6	422.6	0.77
KDD159	428.6	429.6	0.27
KDD159	429.6	430.6	0.54
KDD159	430.6	431.6	0.97
KDD159	431.6	432.6	0.20
KDD159	432.6	433.6	0.57
KDD160	363.8	364.8	0.27
KDD160	364.8	365.8	0.05
KDD160	365.8	366.7	0.04
KDD160	366.7	367.4	0.32
KDD160	377.0	378.0	0.21
KDD160	378.0	379.0	0.63
KDD160	379.0	379.6	0.34
KDD160	400.0	401.0	0.39
KDD160	401.0	401.7	0.39
KDD160	401.7	403.0	0.37
KDD160	403.0	404.0	0.26
KDD160	404.0	405.0	0.28
KDD160	405.0	406.0	0.56
KDD160	406.0	407.0	0.48
KDD160	407.0	408.0	0.72
KDD160	408.0	409.0	0.31
KDD160	409.0	410.0	1.39
KDD160	414.0	415.0	1.43
KDD160	415.0	416.0	0.29
KDD160	416.0	417.0	0.16
KDD160	417.0	418.0	0.05
KDD160	418.0	419.0	0.21
KDD160	419.0	420.0	1.62
KDD160	420.0	421.0	0.34
KDD161	400.0	401.0	0.27
KDD161	401.0	402.0	0.26
KDD161	402.0	403.0	0.18
KDD161	403.0	404.0	0.50
KDD161	404.0	405.0	0.43
KDD161	405.0	406.3	0.19
KDD161	406.3	407.0	0.22
KDD161	426.5	427.5	0.59
KDD161	427.5	428.5	0.73
KDD161	428.5	429.5	0.47
KDD161	429.5	430.5	1.30
KDD161	430.5	431.5	0.29
KDD161	431.5	432.5	0.42
KDD161	432.5	433.5	0.53
KDD161	433.5	434.5	0.23
KDD161	434.5	435.5	0.03
KDD161	435.5	436.5	0.23
KDD161	436.5	437.5	0.20
KDD161	437.5	438.5	0.03
KDD161	438.5	439.0	0.12
KDD161	439.0	439.5	2.26
KDD161	439.5	440.5	0.16
KDD161	440.5	441.0	0.27
KDD161	441.0	441.8	0.02
KDD161	441.8	442.5	0.60
KDD161	445.0	446.0	0.30
KDD161	446.0	447.0	0.27
KDD161	447.0	447.5	0.20
KDD161	447.5	448.5	0.43
KDD161	448.5	449.0	0.11
KDD161	449.0	450.0	0.29
KDD161	450.0	451.0	0.19
KDD161	451.0	452.0	0.20
KDD161	452.0	452.8	0.23
KDD162	541.0	542.0	0.34

Hole ID	From (m)	To (m)	Gold g/t
KDD162	542.0	543.0	0.64
KDD162	543.0	544.0	1.08
KDD162	544.0	545.0	0.10
KDD162	545.0	546.0	0.52
KDD162	546.0	547.0	0.52
KDD162	547.0	548.0	0.25
KDD162	548.0	549.0	0.84
KDD162	549.0	550.0	0.44
KDD162	550.0	551.0	0.76
KDD162	551.0	552.0	1.80
KDD162	552.0	553.8	0.02
KDD162	553.8	554.8	0.88
KDD162	554.8	555.3	0.50
KDD162	648.4	649.1	5.60
KDD162	649.1	650.0	1.98
KDD162	650.0	651.0	1.65
KDD162	651.0	652.0	4.25
KDD162	652.0	653.0	4.71
KDD162	653.0	654.0	3.84
KDD162	654.0	655.0	0.50
KDD162	655.0	656.0	0.30
KDD162	656.0	657.0	1.80
KRC580	204.0	205.0	0.49
KRC580	205.0	206.0	0.56
KRC580	206.0	207.0	0.66
KRC580	207.0	208.0	0.84
KRC580	208.0	209.0	0.80
KRC580	209.0	210.0	0.78
KRC580	210.0	211.0	1.55
KRC580	211.0	212.0	4.25
KRC580	212.0	213.0	1.64
KRC580	213.0	214.0	1.27
KRC580	214.0	215.0	2.71
KRC580	215.0	216.0	0.54
KRC580	216.0	217.0	0.33
KRC580	217.0	218.0	0.59
KRC580	218.0	219.0	0.68
KRC580	219.0	220.0	0.13
KRC580	220.0	221.0	0.20
KRC580	249.0	250.0	0.26
KRC580	250.0	251.0	0.05
KRC580	251.0	252.0	0.03
KRC580	252.0	253.0	1.12
KRC580	253.0	254.0	0.57
KRC580	254.0	255.0	0.78
KRC580	255.0	256.0	0.47
KRC580	256.0	257.0	0.75
KRC580	257.0	258.0	0.27
KRC580	258.0	259.0	1.55
KRC580	259.0	260.0	0.23
KRC580	265.0	266.0	0.38
KRC580	266.0	267.0	1.12
KRC580	267.0	268.0	0.13
KRC580	268.0	269.0	0.17
KRC580	269.0	270.0	0.86
KRC580	270.0	271.0	3.09
KRC580	271.0	272.0	1.17
KRC580	272.0	273.0	0.17
KRC580	273.0	274.0	0.25
KRC580	274.0	275.0	0.08
KRC580	275.0	276.0	0.30
KRC580	276.0	277.0	0.37
KRC580	277.0	278.0	0.13
KRC580	278.0	279.0	1.99
KRC580	279.0	280.0	0.43
KRC580	280.0	281.0	0.72
KRC580	281.0	282.0	2.85
KRC580	282.0	283.0	0.52
KRC580	283.0	284.0	0.67
KRC580	284.0	285.0	0.74
KRC580	285.0	286.0	0.61
KRC580	286.0	287.0	2.12
KRC580	287.0	288.0	0.53
KRC580	288.0	289.0	0.51
KRC580	289.0	290.0	1.51
KRC580	290.0	291.0	0.67
KRC580	291.0	292.0	1.23
KRC580	292.0	293.0	1.26
KRC580	293.0	294.0	3.73
KRC580	294.0	295.0	1.36

For personal use only

Hole ID	From (m)	To (m)	Gold g/t
KRC580	295.0	296.0	4.17
KRC580	296.0	297.0	3.20
KRC580	297.0	298.0	0.38
KRC580	298.0	299.0	0.15
KRC580	299.0	300.0	0.33
KRC580	303.0	304.0	0.20
KRC580	304.0	305.0	0.90
KRC580	305.0	306.0	3.33
KRC580	306.0	307.0	1.15
KRC580	307.0	308.0	0.44
KRC580	308.0	309.0	0.15
KRC580	309.0	310.0	0.06
KRC580	310.0	311.0	0.38
KRC580	317.0	318.0	1.11
KRC580	318.0	319.0	0.64
KRC580	319.0	320.0	0.67
KRC580	320.0	321.0	0.08
KRC580	321.0	322.0	0.12
KRC580	322.0	323.0	0.35
KRC580	323.0	324.0	0.17
KRC580	324.0	325.0	0.69
KRC580	325.0	326.0	0.34
KRC581	237.0	238.0	0.47
KRC581	238.0	239.0	0.25
KRC581	239.0	240.0	0.41
KRC581	240.0	241.0	0.12
KRC581	241.0	242.0	6.42
KRC581	242.0	243.0	0.35
KRC581	253.0	254.0	11.78
KRC581	254.0	255.0	2.63
KRC581	255.0	256.0	0.18
KRC581	256.0	257.0	0.09
KRC581	257.0	258.0	0.30
KRC581	258.0	259.0	0.12
KRC581	259.0	260.0	0.86
KRC581	260.0	261.0	0.24
KRC581	261.0	262.0	0.12
KRC581	262.0	263.0	0.09
KRC581	263.0	264.0	0.28
KRC581	264.0	265.0	0.69
KRC581	265.0	266.0	0.23
KRC581	266.0	267.0	0.22
KRC581	267.0	268.0	1.45
KRC581	268.0	269.0	0.75
KRC581	269.0	270.0	0.64
KRC581	270.0	271.0	0.91
KRC581	271.0	272.0	0.12
KRC581	272.0	273.0	0.51
KRC581	273.0	274.0	0.40
KRC581	274.0	275.0	0.41
KRC581	275.0	276.0	0.05
KRC581	276.0	277.0	0.20
KRC581	277.0	278.0	0.34
KRC581	278.0	279.0	0.47
KRC581	279.0	280.0	0.45
KRC581	280.0	281.0	0.11
KRC581	281.0	282.0	1.31
KRC581	282.0	283.0	0.65
KRC581	283.0	284.0	0.90
KRC581	284.0	285.0	0.23
KRC581	285.0	286.0	2.08
KRC581	286.0	287.0	1.36
KRC581	287.0	288.0	0.37
KRC581	288.0	289.0	0.24
KRC581	289.0	290.0	0.26
KRC581	290.0	291.0	0.33
KRC581	291.0	292.0	1.74
KRC581	292.0	293.0	0.56
KRC581	293.0	294.0	0.23
KRC581	294.0	295.0	0.04
KRC581	295.0	296.0	0.15
KRC581	296.0	297.0	0.24
KRC581	297.0	298.0	0.59
KRC581	298.0	299.0	0.48
KRC581	299.0	300.0	0.66
KRC581	300.0	301.0	0.15
KRC581	301.0	302.0	0.29
KRC581	302.0	303.0	0.53
KRC581	303.0	304.0	0.25
KRC582	179.0	180.0	0.23

Hole ID	From (m)	To (m)	Gold g/t
KRC582	180.0	181.0	0.16
KRC582	181.0	182.0	0.45
KRC582	182.0	183.0	0.38
KRC582	205.0	206.0	0.37
KRC582	206.0	207.0	1.21
KRC582	207.0	208.0	1.11
KRC582	208.0	209.0	0.63
KRC582	214.0	215.0	0.34
KRC582	215.0	216.0	0.22
KRC582	216.0	217.0	0.41
KRC582	217.0	218.0	3.88
KRC582	218.0	219.0	1.04
KRC582	219.0	220.0	0.42
KRC582	220.0	221.0	0.09
KRC582	221.0	222.0	0.32
KRC582	222.0	223.0	0.44
KRC582	223.0	224.0	2.92
KRC582	224.0	225.0	2.13
KRC582	225.0	226.0	0.88
KRC582	226.0	227.0	0.81
KRC582	227.0	228.0	0.88
KRC582	228.0	229.0	0.33
KRC582	229.0	230.0	0.41
KRC582	230.0	231.0	0.19
KRC582	231.0	232.0	0.20
KRC582	315.0	316.0	1.49
KRC582	316.0	317.0	0.94
KRC582	317.0	318.0	0.84
KRC582	318.0	319.0	0.41
KRC582	319.0	320.0	0.20
KRC582	320.0	321.0	0.74
KRC582	321.0	322.0	0.59
KRC582	322.0	323.0	0.57
KRC582	323.0	324.0	0.04
KRC582	324.0	325.0	0.12
KRC582	325.0	326.0	0.24
KRC582	326.0	327.0	0.39
KRC582	327.0	328.0	0.43
KRC582	328.0	329.0	0.36
KRC582	329.0	330.0	0.74
KRC582	330.0	331.0	0.50
KRC582	331.0	332.0	0.19
KRC582	332.0	333.0	0.52
KRC582	333.0	334.0	1.43
KRC582	334.0	335.0	0.39
KRC582	335.0	336.0	0.73
KRC582	336.0	337.0	0.66
KRC582	337.0	338.0	0.26
KRC582	338.0	339.0	0.18
KRC582	339.0	340.0	0.34
KRC582	340.0	341.0	0.21
KRC582	341.0	342.0	0.34
KRC583	146.0	147.0	0.28
KRC583	147.0	148.0	0.67
KRC583	148.0	149.0	0.08
KRC583	149.0	150.0	0.05
KRC583	150.0	151.0	0.20
KRC583	267.0	268.0	0.40
KRC583	268.0	269.0	0.99
KRC583	269.0	270.0	0.11
KRC583	270.0	271.0	0.68
KRC583	271.0	272.0	0.57
KRC583	272.0	273.0	1.11
KRC583	273.0	274.0	1.25
KRC583	274.0	275.0	0.34
KRC583	275.0	276.0	1.19
KRC583	279.0	280.0	0.21
KRC583	280.0	281.0	0.31
KRC583	281.0	282.0	0.28
KRC583	285.0	286.0	0.42
KRC583	286.0	287.0	0.15
KRC583	287.0	288.0	0.74
KRC583	288.0	289.0	1.03
KRC583	289.0	290.0	0.75
KRC583	290.0	291.0	1.15
KRC583	291.0	292.0	0.76
KRC583	292.0	293.0	0.34
KRC583	293.0	294.0	0.63
KRC583	294.0	295.0	0.48
KRC583	295.0	296.0	0.65

Hole ID	From (m)	To (m)	Gold g/t
KRC583	296.0	297.0	0.47
KRC583	297.0	298.0	0.73
KRC583	298.0	299.0	0.38
KRC583	299.0	300.0	0.48
KRC583	300.0	301.0	0.38
KRC583	301.0	302.0	0.32
KRC583	302.0	303.0	0.46
KRC583	303.0	304.0	0.84
KRC583	304.0	305.0	0.68
KRC583	305.0	306.0	0.44
KRC583	306.0	307.0	0.26
KRC583	307.0	308.0	0.09
KRC583	308.0	309.0	0.33
KRC583	309.0	310.0	0.24
KRC584	219.0	220.0	1.05
KRC584	220.0	221.0	0.34
KRC584	221.0	222.0	0.11
KRC584	222.0	223.0	0.29
KRC584	223.0	224.0	0.05
KRC584	224.0	225.0	0.16
KRC584	225.0	226.0	0.22
KRC584	226.0	227.0	0.28
KRC584	238.0	239.0	0.34
KRC584	239.0	240.0	0.13
KRC584	240.0	241.0	0.08
KRC584	241.0	242.0	0.23
KRC584	242.0	243.0	0.25
KRC584	243.0	244.0	0.30
KRC584	244.0	245.0	0.30
KRC584	245.0	246.0	0.33
KRC584	246.0	247.0	2.05
KRC584	247.0	248.0	0.33
KRC584	248.0	249.0	1.08
KRC584	249.0	250.0	1.40
KRC584	250.0	251.0	1.48
KRC584	251.0	252.0	1.94
KRC584	252.0	253.0	2.36
KRC584	253.0	254.0	0.10
KRC584	254.0	255.0	0.22
KRC584	284.0	285.0	0.59
KRC584	285.0	286.0	0.89
KRC584	286.0	287.0	0.32
KRC584	287.0	288.0	0.26
KRC584	288.0	289.0	0.67
KRC584	289.0	290.0	0.43
KRC584	290.0	291.0	1.26
KRC584	291.0	292.0	0.63
KRC584	292.0	293.0	0.60
KRC584	293.0	294.0	1.61
KRC584	294.0	295.0	0.62
KRC584	295.0	296.0	0.98
KRC584	296.0	297.0	1.38
KRC584	297.0	298.0	0.88
KRC584	298.0	299.0	0.44
KRC584	299.0	300.0	0.10
KRC584	300.0	301.0	0.21
KRC584	301.0	302.0	1.48
KRC584	302.0	303.0	0.39
KRC584	303.0	304.0	0.22
KRC584	304.0	305.0	0.50
KRC584	305.0	306.0	0.80
KRC584	306.0	307.0	0.54
KRC584	307.0	308.0	0.28
KRC584	308.0	309.0	0.99
KRC584	309.0	310.0	1.53
KRC584	310.0	311.0	0.51
KRC584	311.0	312.0	0.65
KRC584	312.0	313.0	0.41
KRC584	313.0	314.0	0.27
KRC584	314.0	315.0	0.06
KRC584	315.0	316.0	0.05
KRC584	316.0	317.0	0.36
KRC584	317.0	318.0	0.42
KRC584	318.0	319.0	0.46
KRC584	319.0	320.0	0.45
KRC584	320.0	321.0	0.44
KRC585	45.0	46.0	0.28
KRC585	46.0	47.0	0.07
KRC585	47.0	48.0	0.31
KRC585	48.0	49.0	0.11

Hole ID	From (m)	To (m)	Gold g/t
KRC585	49.0	50.0	0.21
KRC585	50.0	51.0	0.07
KRC585	51.0	52.0	0.12
KRC585	52.0	53.0	1.85
KRC585	106.0	107.0	0.25
KRC585	107.0	108.0	0.65
KRC585	108.0	109.0	0.21
KRC585	109.0	110.0	0.10
KRC585	110.0	111.0	0.66
KRC585	111.0	112.0	0.09
KRC585	112.0	113.0	0.86
KRC585	113.0	114.0	0.09
KRC585	114.0	115.0	0.12
KRC585	115.0	116.0	0.27
KRC585	116.0	117.0	0.05
KRC585	117.0	118.0	0.23
KRC585	167.0	168.0	1.38
KRC585	168.0	169.0	1.09
KRC585	169.0	170.0	0.72
KRC585	170.0	171.0	0.45
KRC585	171.0	172.0	0.27
KRC585	172.0	173.0	0.70
KRC585	173.0	174.0	1.37
KRC585	174.0	175.0	1.14
KRC585	175.0	176.0	0.94
KRC585	176.0	177.0	0.23
KRC585	180.0	181.0	0.59
KRC585	181.0	182.0	0.16
KRC585	182.0	183.0	0.25
KRC585	183.0	184.0	2.27
KRC585	184.0	185.0	0.50
KRC585	185.0	186.0	1.15
KRC585	186.0	187.0	0.98
KRC585	187.0	188.0	0.42
KRC585	188.0	189.0	0.55
KRC585	189.0	190.0	0.63
KRC585	190.0	191.0	0.81
KRC585	191.0	192.0	1.04
KRC585	192.0	193.0	1.15
KRC585	193.0	194.0	0.66
KRC585	194.0	195.0	0.49
KRC585	195.0	196.0	0.24
KRC585	196.0	197.0	0.75
KRC585	197.0	198.0	1.15
KRC585	198.0	199.0	0.08
KRC585	199.0	200.0	0.27
KRC585	200.0	201.0	0.70
KRC585	201.0	202.0	0.42
KRC585	202.0	203.0	0.25
KRC585	203.0	204.0	0.21
KRC586	277.0	278.0	0.46
KRC586	278.0	279.0	0.30
KRC586	279.0	280.0	0.41
KRC586	280.0	281.0	0.36
KRC586	286.0	287.0	0.29
KRC586	287.0	288.0	0.36
KRC586	288.0	289.0	0.06
KRC586	289.0	290.0	0.38
KRC586	290.0	291.0	0.40
KRC586	296.0	297.0	0.24
KRC586	297.0	298.0	0.05
KRC586	298.0	299.0	0.14
KRC586	299.0	300.0	0.66
KRC586	300.0	301.0	0.25
KRC586	306.0	307.0	0.34
KRC586	307.0	308.0	0.29
KRC586	308.0	309.0	0.43
KRC586	309.0	310.0	0.40
KRC586	310.0	311.0	1.74
KRC586	311.0	312.0	0.68
KRC586	312.0	313.0	1.75
KRC586	313.0	314.0	1.68
KRC586	314.0	315.0	4.02
KRC586	315.0	316.0	0.67
KRC586	316.0	317.0	0.34
KRC586	317.0	318.0	0.11
KRC586	318.0	319.0	0.25
KRC587	156.0	157.0	0.55
KRC587	157.0	158.0	0.14
KRC587	158.0	159.0	0.24

Hole ID	From (m)	To (m)	Gold g/t
KRC587	159.0	160.0	0.49
KRC587	160.0	161.0	0.83
KRC587	165.0	166.0	0.21
KRC587	166.0	167.0	0.21
KRC587	167.0	168.0	0.19
KRC587	168.0	169.0	0.18
KRC587	169.0	170.0	0.80
KRC587	170.0	171.0	1.65
KRC587	171.0	172.0	9.84
KRC587	172.0	173.0	0.12
KRC587	173.0	174.0	0.34
KRC587	174.0	175.0	1.08
KRC587	175.0	176.0	1.75
KRC587	176.0	177.0	1.89
KRC587	177.0	178.0	2.46
KRC587	178.0	179.0	1.27
KRC587	179.0	180.0	0.67
KRC587	180.0	181.0	0.40
KRC587	181.0	182.0	0.19
KRC587	182.0	183.0	0.14
KRC587	183.0	184.0	0.38
KRC587	184.0	185.0	0.26
KRC587	185.0	186.0	1.24
KRC587	186.0	187.0	1.15
KRC587	187.0	188.0	0.45
KRC587	188.0	189.0	0.17
KRC587	189.0	190.0	0.27
KRC587	190.0	191.0	0.50
KRC587	191.0	192.0	0.56
KRC587	192.0	193.0	0.77
KRC587	193.0	194.0	0.92
KRC587	194.0	195.0	0.51
KRC587	195.0	196.0	1.06
KRC587	196.0	197.0	0.87
KRC587	197.0	198.0	0.39
KRC587	198.0	199.0	0.80
KRC587	199.0	200.0	0.41
KRC587	200.0	201.0	0.22
KRC587	241.0	242.0	0.79
KRC587	242.0	243.0	0.63
KRC587	243.0	244.0	5.48
KRC587	244.0	245.0	1.24
KRC587	245.0	246.0	1.79
KRC587	246.0	247.0	1.09
KRC587	247.0	248.0	0.22
KRC587	248.0	249.0	0.21
KRC587	249.0	250.0	1.85
KRC587	250.0	251.0	1.15
KRC587	251.0	252.0	1.25
KRC587	252.0	253.0	0.59
KRC587	253.0	254.0	2.86
KRC587	254.0	255.0	0.21
KRC587	255.0	256.0	0.35
KRC587	256.0	257.0	0.17
KRC587	257.0	258.0	0.43
KRC587	258.0	259.0	0.24
KRC587	259.0	260.0	0.10
KRC587	260.0	261.0	0.33
KRC587	302.0	303.0	0.61
KRC587	303.0	304.0	3.94
KRC587	304.0	305.0	0.23
KRC587	305.0	306.0	0.65
KRC587	306.0	307.0	0.56
KRC587	307.0	308.0	3.66
KRC587	308.0	309.0	0.58
KRC587	309.0	310.0	0.31
KRC587	310.0	311.0	0.06
KRC587	311.0	312.0	0.03
KRC587	312.0	313.0	0.20
KRC587	313.0	314.0	0.19
KRC587	314.0	315.0	0.20
KRC587	315.0	316.0	0.16
KRC587	316.0	317.0	0.07
KRC587	317.0	318.0	0.37
KRC587	318.0	319.0	0.81
KRC587	319.0	320.0	0.13
KRC587	320.0	321.0	0.13
KRC587	321.0	322.0	0.36
KRC587	322.0	323.0	10.40
KRC587	323.0	324.0	1.49

Hole ID	From (m)	To (m)	Gold g/t
KRC587	324.0	325.0	0.08
KRC587	325.0	326.0	0.04
KRC587	326.0	327.0	0.79
KRC587	327.0	328.0	0.66
KRC587	328.0	329.0	0.59
KRC587	329.0	330.0	0.45
KRC587	330.0	331.0	0.37
KRC588	263.0	264.0	0.22
KRC588	264.0	265.0	0.32
KRC588	265.0	266.0	0.43
KRC588	278.0	279.0	0.28
KRC588	279.0	280.0	0.94
KRC588	280.0	281.0	0.61
KRC588	281.0	282.0	0.16
KRC588	282.0	283.0	2.17
KRC588	283.0	284.0	1.11
KRC588	284.0	285.0	0.63
KRC588	285.0	286.0	0.84
KRC588	286.0	287.0	0.30
KRC588	287.0	288.0	2.10
KRC588	288.0	289.0	1.08
KRC588	289.0	290.0	0.98
KRC588	290.0	291.0	0.90
KRC588	291.0	292.0	1.56
KRC588	292.0	293.0	0.28
KRC588	304.0	305.0	0.33
KRC588	305.0	306.0	0.23
KRC588	306.0	307.0	0.52
KRC588	307.0	308.0	1.25
KRC589	276.0	277.0	0.20
KRC589	277.0	278.0	0.11
KRC589	278.0	279.0	0.05
KRC589	279.0	280.0	0.27
KRC589	280.0	281.0	0.30
KRC589	281.0	282.0	0.57
KRC589	282.0	283.0	1.05
KRC589	283.0	284.0	0.26
KRC589	288.0	289.0	0.53
KRC589	289.0	290.0	0.42
KRC589	290.0	291.0	0.09
KRC589	291.0	292.0	0.21
KRC589	297.0	298.0	0.24
KRC589	298.0	299.0	0.26
KRC589	299.0	300.0	0.22
KRC589	303.0	304.0	0.25
KRC589	304.0	305.0	0.53
KRC589	305.0	306.0	0.14
KRC589	306.0	307.0	1.24
KRC589	307.0	308.0	1.56
KRC589	308.0	309.0	0.73
KRC589	309.0	310.0	0.40
KRC589	310.0	311.0	4.20
KRC589	311.0	312.0	0.39
KRC589	312.0	313.0	1.40
KRC589	313.0	314.0	1.51
KRC589	314.0	315.0	1.93
KRC589	315.0	316.0	0.92
KRC589	316.0	317.0	2.82
KRC589	317.0	318.0	0.98
KRC589	318.0	319.0	0.64
KRC589	319.0	320.0	2.30
KRC589	320.0	321.0	0.61
KRC589	321.0	322.0	0.27
KRC589	322.0	323.0	0.08
KRC589	323.0	324.0	0.01
KRC589	324.0	325.0	1.49
KRC589	325.0	326.0	0.39
KRD579	344.0	345.0	0.49
KRD579	345.0	346.0	0.50
KRD579	346.0	347.0	0.36
KRD579	347.0	348.0	0.29
KRD579	365.0	366.0	0.29
KRD579	366.0	367.0	0.19
KRD579	367.0	368.0	0.70
KRD579	371.0	372.0	0.50
KRD579	372.0	373.0	5.26
KRD579	373.0	374.0	0.30
KRD579	374.0	375.0	0.32
KRD579	375.0	376.0	0.08
KRD579	376.0	377.0	0.64

Hole ID	From (m)	To (m)	Gold g/t
KRD579	377.0	378.0	0.07
KRD579	378.0	379.0	0.92
KRD579	379.0	380.0	0.62
KRD579	380.0	381.0	1.52
KRD579	381.0	382.0	0.57
KRD579	382.0	383.0	0.64
KRD579	383.0	384.0	0.51
KRD579	384.0	385.0	0.49
KRD579	385.0	386.0	0.17
KRD579	386.0	387.0	0.18
KRD579	387.0	388.0	0.65
KRD579	388.0	389.0	0.13
KRD579	389.0	390.0	0.54
KRD579	390.0	391.0	1.82
KRD579	391.0	392.0	0.48
KRD579	392.0	393.0	0.52
KRD579	393.0	394.0	0.15
KRD579	394.0	395.0	0.16

Hole ID	From (m)	To (m)	Gold g/t
KRD579	395.0	396.0	0.31
KRD579	396.0	397.0	0.09
KRD579	397.0	398.0	1.04
KRD579	398.0	399.0	0.26
KRD579	399.0	400.0	1.04
KRD579	400.0	401.0	0.31
KRD579	401.0	402.0	0.50
KRD579	402.0	403.0	0.78
KRD579	403.0	404.0	1.46
KRD579	404.0	405.3	0.39
KRD579	405.3	406.0	2.43
KRD579	406.0	407.0	0.58
KRD579	407.0	407.8	0.45
KRD579	407.8	408.6	4.21
KRD579	408.6	409.6	0.50
KRD579	409.6	410.6	0.65
KRD579	410.6	411.6	0.48

For personal use only

**Appendix 3. JORC Table 1 Reporting**

**Section 1 Sampling Techniques and Data**

Criteria	JORC Code explanation	Commentary
<b>Sampling techniques</b>	<ul style="list-style-type: none"> <li>Nature and quality of sampling (eg cut channels, random chips, or specific specialised industry standard measurement tools appropriate to the minerals under investigation, such as down hole gamma sondes, or handheld XRF instruments, etc). These examples should not be taken as limiting the broad meaning of sampling.</li> <li>Include reference to measures taken to ensure sample representivity and the appropriate calibration of any measurement tools or systems used.</li> <li>Aspects of the determination of mineralisation that are Material to the Public Report.</li> <li>In cases where ‘industry standard’ work has been done this would be relatively simple (eg ‘reverse circulation drilling was used to obtain 1 m samples from which 3 kg was pulverised to produce a 30 g charge for fire assay’). In other cases, more explanation may be required, such as where there is coarse gold that has inherent sampling problems. Unusual commodities or mineralisation types (eg submarine nodules) may warrant disclosure of detailed information.</li> </ul>	<ul style="list-style-type: none"> <li>Reverse circulation (RC) drilling was completed using a dedicated RC rig.</li> <li>RC samples were collected from the drill rig cyclone over 1 m down-hole intervals and subsampled by cone-splitting; full length of the drill holes was sampled.</li> <li>Samples are typically circa 2-4kg weight. A duplicate sample was retained on site for future reference.</li> <li>Diamond drilling was completed using a dedicated diamond rig. Drillholes were angled at -60° from surface.</li> <li>Diamond core was cut in half using a core saw for HQ diameters; NQ diameters were sampled full core. Sampling intervals are decided by a Company Geologist, based on the lithological contacts and on any change in alteration or mineralisation style.</li> <li>Core sample length vary between 0.5m and 2m. The half core sampling is done by a Company Geologist.</li> </ul>
<b>Drilling techniques</b>	<ul style="list-style-type: none"> <li>Drill type (eg core, reverse circulation, open-hole hammer, rotary air blast, auger, Bangka, sonic, etc) and details (eg core diameter, triple or standard tube, depth of diamond tails, face-sampling bit or other type, whether core is oriented and if so, by what method, etc).</li> </ul>	<ul style="list-style-type: none"> <li>RC drilling utilised 140 mm (5.5 inch) face sampling bits.</li> <li>Diamond drilling was undertaken at HQ (drill holes from surface) or NQ (from surface or as diamond tails) diameters, and oriented using the Reflex Act III digital core orientation equipment.</li> </ul>
<b>Drill sample recovery</b>	<ul style="list-style-type: none"> <li>Method of recording and assessing core and chip sample recoveries and results assessed.</li> <li>Measures taken to maximise sample recovery and ensure representative nature of the samples.</li> <li>Whether a relationship exists between sample recovery and grade and whether sample bias may have occurred due to preferential loss/gain of fine/coarse material.</li> </ul>	<ul style="list-style-type: none"> <li>RC recoveries were determined by weighting each drill metre bag. Samples are sieved and logged by supervising Geologist; sample weight, quality, moisture and any contamination are recorded.</li> <li>RC samples quality and recovery was excellent, with dry samples and consistent weight obtained.</li> <li>Drill core recoveries were recorded at the drill rig. Core recoveries were excellent for all the drill programs.</li> <li>Sample bias is not expected with the cut core.</li> </ul>
<b>Logging</b>	<ul style="list-style-type: none"> <li>Whether core and chip samples have been geologically and geotechnically logged to a level of detail to support appropriate Mineral Resource</li> </ul>	<ul style="list-style-type: none"> <li>The entire length of all RC and diamond holes were logged by Company geologists using industry standard methods, including recording of lithology, alteration, mineralisation and</li> </ul>

For personal use only

Criteria	JORC Code explanation	Commentary
	<p><i>estimation, mining studies and metallurgical studies.</i></p> <ul style="list-style-type: none"> <li><i>Whether logging is qualitative or quantitative in nature. Core (or costean, channel, etc) photography.</i></li> <li><i>The total length and percentage of the relevant intersections logged.</i></li> </ul>	<p>weathering. Sieved RC sample collected for logging were stored in chip trays for future geological reference and all core was routinely photographed. All core was geotechnically logged, including recording of RQD and fracture frequency.</p> <ul style="list-style-type: none"> <li>The logging is qualitative and quantitative in nature and is of appropriate detail for support the current Mineral Resource estimates.</li> </ul>
<p><b>Sub-sampling techniques and sample preparation</b></p>	<ul style="list-style-type: none"> <li><i>If core, whether cut or sawn and whether quarter, half or all core taken.</i></li> <li><i>If non-core, whether riffled, tube sampled, rotary split, etc and whether sampled wet or dry.</i></li> <li><i>For all sample types, the nature, quality and appropriateness of the sample preparation technique.</i></li> <li><i>Quality control procedures adopted for all sub-sampling stages to maximise representivity of samples.</i></li> <li><i>Measures taken to ensure that the sampling is representative of the in-situ material collected, including for instance results for field duplicate/second-half sampling.</i></li> <li><i>Whether sample sizes are appropriate to the grain size of the material being sampled.</i></li> </ul>	<ul style="list-style-type: none"> <li>The RC samples were collected from the rig cyclone and passed through a riffle splitter to reduce sample weight to a circa 2-4kg.</li> <li>The sampling technique is considered industry standard and effective for this style of drilling.</li> <li>Samples were crushed and pulverized at the ALS laboratory in Okahandja before being shipped to Johannesburg for assay.</li> <li>RC samples were assayed using method Au-AA24 for gold.</li> <li>The sample preparation procedures carried out are considered acceptable. Blanks, standards (CRM) and duplicates are used to monitor Quality Control and representativeness of samples.</li> <li>The diamond core was cut longitudinally using a core saw on HQ diameters, to sample half core; NQ diameters were sampled full core.</li> <li>Core samples were collected by a Company Geologist and sent off to the laboratory for assay.</li> <li>Core samples were crushed and pulverized at the ALS laboratory in Okahandja before being shipped to Johannesburg for assay.</li> <li>Drilling samples were assayed using methods Au-AA24 for gold.</li> <li>The sample preparation procedures carried out are considered acceptable. Blanks and standards (CRM) are used to monitor Quality Control and representativeness of samples.</li> </ul>
<p><b>Quality of assay data and laboratory tests</b></p>	<ul style="list-style-type: none"> <li><i>The nature, quality and appropriateness of the assaying and laboratory procedures used and whether the technique is considered partial or total.</i></li> <li><i>For geophysical tools, spectrometers, handheld XRF instruments, etc, the parameters used in determining the analysis including instrument make and model, reading times, calibrations factors applied and their derivation, etc.</i></li> <li><i>Nature of quality control procedures adopted (eg standards, blanks, duplicates, external laboratory checks) and whether acceptable levels of accuracy (ie lack of bias) and precision have been established.</i></li> </ul>	<ul style="list-style-type: none"> <li>RC samples and core samples were assayed by 50g Lead collection fire assay in new pots and analysed by Atomic Absorption Spectroscopy (AAS) for gold.</li> <li>Industry best practice procedures were followed and included submitting blanks, field duplicates and Certified Reference Material. Acceptable levels of accuracy and precision have been confirmed.</li> </ul>

For personal use only

Criteria	JORC Code explanation	Commentary
<b>Verification of sampling and assaying</b>	<ul style="list-style-type: none"> <li>The verification of significant intersections by either independent or alternative company personnel.</li> <li>The use of twinned holes.</li> <li>Documentation of primary data, data entry procedures, data verification, data storage (physical and electronic) protocols.</li> <li>Discuss any adjustment to assay data.</li> </ul>	<ul style="list-style-type: none"> <li>At this stage, the intersections have been verified by the Company Geologists.</li> <li>All field data is manually collected, entered into excel spreadsheets, validated and loaded into a database.</li> <li>Electronic data is stored on a cloud server and routinely backed up.</li> <li>Data is exported from the database for processing in a number of software packages.</li> </ul>
<b>Location of data points</b>	<ul style="list-style-type: none"> <li>Accuracy and quality of surveys used to locate drill holes (collar and down-hole surveys), trenches, mine workings and other locations used in Mineral Resource estimation.</li> <li>Specification of the grid system used.</li> <li>Quality and adequacy of topographic control.</li> </ul>	<ul style="list-style-type: none"> <li>Drill holes collar locations were recorded at the completion of each hole by hand-held GPS.</li> <li>Coordinates collected are in the WGS84 Zone 33S grid system</li> </ul>
<b>Data spacing and distribution</b>	<ul style="list-style-type: none"> <li>Data spacing for reporting of Exploration Results.</li> <li>Whether the data spacing and distribution is sufficient to establish the degree of geological and grade continuity appropriate for the Mineral Resource and Ore Reserve estimation procedure(s) and classifications applied.</li> <li>Whether sample compositing has been applied.</li> </ul>	<ul style="list-style-type: none"> <li>The data spacing and distribution of sampling is sufficient to establish the degree of geological and grade continuity appropriate for Mineral Resource estimation procedures.</li> <li>Drill holes were planned on localised set grids with spacing varying between 25m and 100m; depending on the sections.</li> <li>The grade control trial grid was set at a 6m x 10m grid.</li> </ul>
<b>Orientation of data in relation to geological structure</b>	<ul style="list-style-type: none"> <li>Whether the orientation of sampling achieves unbiased sampling of possible structures and the extent to which this is known, considering the deposit type.</li> <li>If the relationship between the drilling orientation and the orientation of key mineralised structures is considered to have introduced a sampling bias, this should be assessed and reported if material.</li> </ul>	<ul style="list-style-type: none"> <li>Drill holes were positioned using geological information collected from the trenches and from the detailed mapping completed over the prospect. They are positioned perpendicular to the main schistosity and so to the inferred mineralisation main controls.</li> </ul>
<b>Sample security</b>	<ul style="list-style-type: none"> <li>The measures taken to ensure sample security.</li> </ul>	<ul style="list-style-type: none"> <li>Sampling is supervised by Wia geologists and all samples are bagged and sealed on site prior to delivery to the laboratory in Okahandja by company staff. No other personnel are permitted un-supervised access to the samples prior to delivery to ALS.</li> </ul>
<b>Audits or reviews</b>	<ul style="list-style-type: none"> <li>The results of any audits or reviews of sampling techniques and data.</li> </ul>	<ul style="list-style-type: none"> <li>No reviews or audits have been conducted on the drilling reported in this announcement.</li> </ul>

For personal use only

Section 2 Reporting of Exploration Results

(Criteria listed in the preceding section also apply to this section.)

Criteria	JORC Code explanation	Commentary
<b>Mineral tenement and land tenure status</b>	<ul style="list-style-type: none"> <li>Type, reference name/number, location and ownership including agreements or material issues with third parties such as joint ventures, partnerships, overriding royalties, native title interests, historical sites, wilderness or national park and environmental settings.</li> <li>The security of the tenure held at the time of reporting along with any known impediments to obtaining a licence to operate in the area.</li> </ul>	<ul style="list-style-type: none"> <li>The Damaran Project comprises 11 exclusive prospecting licenses (EPLs 6226, 4833, 8039, 7246, 4818, 4953, 6534, 6535, 8249, 7980, 8709) and located in central Namibia. EPL6226 is 100% held by Wia Gold in the name of Aloe Investments One Hundred and Ninety Two (Pty) Ltd. EPL4833, 4818, 7246, 8039 and 8249 are held under an 80% earn-in and joint venture agreement with Epangelo Mining Limited, a private mining investment company with the Government of the Republic of Namibia as the sole shareholder.</li> <li>EPL6534, 6535, and 4953 are held under a company called Gazina Investments which is owned 90% by Wia and 10% by the vendor.</li> <li>EPL7980 is 100% held by WiaGold in the name of Damaran Exploration Namibia (PTY) Ltd</li> </ul>
<b>Exploration done by other parties</b>	<ul style="list-style-type: none"> <li>Acknowledgment and appraisal of exploration by other parties.</li> </ul>	<ul style="list-style-type: none"> <li>Work completed prior to WiaGold includes stream sediment sampling, mapping, soil and rock chip sampling by Teck Cominco Namibia but data is unavailable.</li> <li>This work did not cover the Okombahe permit (EPL4818), host of the Kokoseb deposit.</li> </ul>
<b>Geology</b>	<ul style="list-style-type: none"> <li>Deposit type, geological setting and style of mineralisation.</li> </ul>	<ul style="list-style-type: none"> <li>The Kokoseb Gold Project lies within the Northern Central Zone of the Pan-African Damaran Orogenic Belt. The project area is underlain by neo-Proterozoic metasediments, including the Kuiseb schist formation, host of Kokoseb, Twin Hills and Ondundu gold deposits in Namibia. Known gold deposits, including Kokoseb, are orogenic type deposits by nature.</li> <li>Kokoseb gold mineralisation is hosted by the Kuiseb schist formation, biotite-schists (metasediments) which have been intruded by several granitic phases. The gold mineralised zone appears as a contact like aureole around a central granitic pluton, with a diameter of approximately 3km in each direction.</li> <li>Gold mineralisation is present as native gold grains and lesser silver bearing gold grains that are spatially associated with sulphides dominated by pyrrhotite, löllingite and arsenopyrite. Gold grains have developed at the contact between löllingite and arsenopyrite following a retrograde reaction.</li> </ul>
<b>Drill hole Information</b>	<ul style="list-style-type: none"> <li>A summary of all information material to the understanding of the exploration results including a tabulation of the following information for all Material drill holes:                             <ul style="list-style-type: none"> <li>easting and northing of the drill hole collar</li> </ul> </li> </ul>	<ul style="list-style-type: none"> <li>see tables in the appendix.</li> </ul>

For personal use only

For personal use only

Criteria	JORC Code explanation	Commentary
	<ul style="list-style-type: none"> <li>○ elevation or RL (Reduced Level – elevation above sea level in metres) of the drill hole collar</li> <li>○ dip and azimuth of the hole</li> <li>○ down hole length and interception depth</li> <li>○ hole length.</li> <li>● If the exclusion of this information is justified on the basis that the information is not Material and this exclusion does not detract from the understanding of the report, the Competent Person should clearly explain why this is the case.</li> </ul>	
<b>Data aggregation methods</b>	<ul style="list-style-type: none"> <li>● In reporting Exploration Results, weighting averaging techniques, maximum and/or minimum grade truncations (eg cutting of high grades) and cut-off grades are usually Material and should be stated.</li> <li>● Where aggregate intercepts incorporate short lengths of high-grade results and longer lengths of low-grade results, the procedure used for such aggregation should be stated and some typical examples of such aggregations should be shown in detail.</li> <li>● The assumptions used for any reporting of metal equivalent values should be clearly stated.</li> </ul>	<ul style="list-style-type: none"> <li>● Reported intercepts are calculated using weighted average at a cut-off grade of 0.5 g/t Au and allowing internal dilution of maximum 2m consecutive low-grade material.</li> </ul>
<b>Relationship between mineralisation widths and intercept lengths</b>	<ul style="list-style-type: none"> <li>● These relationships are particularly important in the reporting of Exploration Results.</li> <li>● If the geometry of the mineralisation with respect to the drill hole angle is known, its nature should be reported.</li> <li>● If it is not known and only the down hole lengths are reported, there should be a clear statement to this effect (eg 'down hole length, true width not known').</li> </ul>	<ul style="list-style-type: none"> <li>● Drill holes are inclined at around 55 to 60 degrees, with azimuths generally perpendicular to local mineralisation trends, implying a true thickness around half the down-hole intercept lengths.</li> <li>● Intercepts are reported as they appear from the sampling.</li> </ul>
<b>Diagrams</b>	<ul style="list-style-type: none"> <li>● Appropriate maps and sections (with scales) and tabulations of intercepts should be included for any significant discovery being reported These should include, but not be limited to a plan view of drill hole collar locations and appropriate sectional views.</li> </ul>	<ul style="list-style-type: none"> <li>● Plan view maps of all drillhole are included.</li> </ul>
<b>Balanced reporting</b>	<ul style="list-style-type: none"> <li>● Where comprehensive reporting of all Exploration Results is not practicable, representative reporting of both low and high grades and/or widths should be practiced to avoid misleading reporting of Exploration Results.</li> </ul>	<ul style="list-style-type: none"> <li>● All samples with assays have been reported.</li> </ul>

Criteria	JORC Code explanation	Commentary
<b>Other substantive exploration data</b>	<ul style="list-style-type: none"> <li>Other exploration data, if meaningful and material, should be reported including (but not limited to): geological observations; geophysical survey results; geochemical survey results; bulk samples – size and method of treatment; metallurgical test results; bulk density, groundwater, geotechnical and rock characteristics; potential deleterious or contaminating substances.</li> </ul>	<ul style="list-style-type: none"> <li>No other exploration data is being reported at this time.</li> </ul>
<b>Further work</b>	<ul style="list-style-type: none"> <li>The nature and scale of planned further work (eg tests for lateral extensions or depth extensions or large-scale step-out drilling).</li> <li>Diagrams clearly highlighting the areas of possible extensions, including the main geological interpretations and future drilling areas, provided this information is not commercially sensitive.</li> </ul>	<ul style="list-style-type: none"> <li>Refer to the text in the announcement for information on follow-up and/or next work programs.</li> </ul>

For personal use only