



# More Thick, High-Grade Results Support Targeted Resource Growth at the Katanning Gold Project, WA

An additional 25,000m of in-fill drilling to underpin early mine life commencing imminently

## Highlights:

- Results returned from a further 59 reverse circulation (RC) and diamond drill-holes completed in the Central and Northern Zones at the Katanning Gold Project (KGP) in Western Australia.
- Drill program designed to grow the existing 2.44Moz Resource and 1.33Moz Reserve<sup>1</sup>, as well as in-fill the first two years of planned mine life, with significant new results including:
  - 26m @ 3.03g/t from 79m including 22m @ 3.48g/t from 82m in BSRC2076
  - 10m @ 3.78g/t from 46m in BSRC2080
  - 9m @ 3.67g/t from 46m including 5m @ 6.25g/t from 46m in BSRC2082
  - 11m @ 2.44g/t from 46m in BSRC2078
  - 29m @ 0.89g/t from 159m including 2m @ 5.23g/t from 180m in BSRC2065
  - 9.5m @ 2.44g/t from 512m including 3.2m @ 4.53g/t from 512.79m in BSDD062
- Extensional drilling continues to intersect mineralisation beyond the current Resource envelope, supporting the potential for future Resource growth.
- In-fill drilling provides excellent grade reconciliation, with >80% of in-fill results within mineralised domains returning grades higher than the underlying Resource model.
- Results returned from 66 RC drill-holes completed at the Nanicut Bridge prospect, located 40km south-east of the KGP, with thick continuous intercepts including:
  - 42m @ 0.55g/t from 102m including 5m @ 1.07g/t from 126m in NBRC030
  - 19m @ 0.90g/t from 24m including 3m @ 2.89g/t from 28m in NBRC027
  - 28m @ 0.57g/t from 37m including 4m @ 1.14g/t from 53m in NBRC028
  - 5m @ 1.45g/t from 28m in NBRC052
- Drilling results from Nanicut Bridge continue to support the potential for a maiden satellite mineral resource to complement the flagship Katanning Gold Project.
- 56,115m (373 holes) completed to date as part of the current drilling campaign, with the Company currently awaiting approximately 3,593m of results from the KGP and Moulyinning Prospect.
- Drilling is now underway at the regional Kraken Prospect, 75km north-east of the KGP.
- An additional 25,000m of RC drilling has been planned and will commence imminently at the KGP, reducing drill spacing within the first two years of planned mine life to approximately 20m x 20m in preparation for mining (payback period of 17 months<sup>1</sup>).

<sup>1</sup> For further details, including JORC 2012 and ASX Listing Rule disclosures, refer to ASX announcement of 16 December 2025. The Company confirms that it is not aware of any new information or data that materially affects the information contained in that announcement and that all material assumptions and technical parameters underpinning the estimates in that announcement continue to apply and have not materially changed. See Appendix 1 for a breakdown of Mineral Resource Estimate and Ore Reserve categories.

Ausgold Limited (ASX: AUC) (**Ausgold** or **Company**) is pleased to report assay results from extensional and in-fill drilling within the Central Zone and Northern Zone at its 100%-owned Katanning Gold Project (**KGP**) in WA, part of an expanded >58,000m Reverse Circulation (**RC**) and diamond drilling (**DD**) campaign.

The drilling program is designed to support Resource growth, improve confidence within the first two years of planned mine life, advance future Reserve conversion opportunities, as well as target new discoveries across the Company's 3,000km<sup>2</sup> of regional tenure in the south-west of Western Australia.

Results from the campaign continue to demonstrate the growth potential of the KGP. A formal review of in-fill drilling has also confirmed excellent, generally positive, grade reconciliation with the existing Resource model. An additional 25,000m of RC drilling is set to commence targeting 20m × 20m drill spacing within the first two years of planned mine life in preparation for mining.

## Management Comments

**Commenting on the drilling results, Ausgold Executive Chairman, John Dorward, said:**

*"The Katanning Gold Project continues to deliver exciting drill results, with this fifth announcement from the ongoing drilling campaign demonstrating progress across multiple fronts, including resource growth, enhanced confidence in the existing resource model, and the advancement of a pipeline of satellite opportunities.*

*"The formal review of in-fill drilling has confirmed the robustness of the existing resource model and highlighted opportunities for improvement, while extensional drilling continues to demonstrate the scale and continuity of the Katanning mineralised system beyond the current resource envelope. At Datatine, successful down-plunge drilling has provided further encouragement for a potential underground play, while Nanicup Bridge continues to evolve into a compelling satellite resource opportunity.*

*"With a further 25,000m of drilling about to commence, Ausgold remains focused on systematically growing and advancing the Katanning Gold Project as we progress towards development."*

## Katanning Gold Project – Drilling Results

The KGP lies within a major mineralised structural corridor, with exploration to date outlining a 15km trend hosting multi-lode gold mineralisation across three key Resource zones (Figure 1):

- **Northern Zone:** Datatine deposit.
- **Central Zone:** Jinkas-White Dam, Jackson and Olympia deposits.
- **Southern Zone:** Dingo and Lukin deposits.

Drilling results reported from the KGP in this announcement comprise 49 RC holes for 11,381m, three DD holes for 1,345m, and seven RCD holes for 1,850m. This drilling was completed across the Central Zone and Northern Zone and comprises both in-fill and extensional drilling.

### Central Zone

The in-fill component of the current drilling program is now complete, with 16 RC holes completed for 1,762m. All of these holes were drilled into the Jinkas lodes within, or proximal to, the end of Year 2 pit design (Figure 2), with the objective of confirming and improving confidence in the geological mineralisation model, while also identifying potential to enhance grade and improve future local estimation confidence. Significant intercepts from this drilling include:

- **26m @ 3.03g/t from 79m including 22m @ 3.48g/t from 82m in BSRC2076 – Figure 3**
- **10m @ 3.78g/t from 46m in BSRC2080**
- **9m @ 3.67g/t from 46m including 5m @ 6.25g/t from 46m in BSRC2082**
- **11m @ 2.44g/t from 46m in BSRC2078**
- **8m @ 2.99g/t from 25m including 3m @ 7.06g/t from 30m in BSRC2083**
- **12m @ 1.92g/t from 43m including 7m @ 2.63g/t from 48m in BSRC2084**
- **9m @ 1.68g/t from 150m including 2m @ 6.41g/t from 151m in BSRC2041**

A review of 31,681m of infill drilling from the current campaign, undertaken by the external competent person for the KGP Mineral Resource, demonstrated excellent grade reconciliation, with more than 80% of intersections within the >0.35g/t mineralised domains returning grades higher than those predicted by the underlying Resource model.

Ausgold is preparing to commence an additional 25,000m of RC drilling this month to reduce drill spacing within the first two years of planned mine life to approximately 20m × 20m, further increasing Resource and Reserve confidence and supporting ongoing project optimisation as the KGP advances towards development.

A total of 33 RC holes for 9,619m and seven RCD holes for 1,850m were drilled into the Jinkas and White Dam-Jackson lodes (both Central Zone) to test for mineralisation beyond the current Resource and Reserve boundaries (Figure 2). Significant results from this drilling include:

- **29m @ 0.89g/t from 159m in BSRC2065 (Jinkas)**
- **29m @ 0.78g/t from 281m in BSRC2040 (Jinkas) – Figure 4**
- **24m @ 0.81g/t from 197m in BSRC2025 (Jinkas) – Figure 4**
- **13m @ 1.43g/t from 172m in BSRC2050 (White Dam-Jackson) – Figure 5**
- **11m @ 1.54g/t from 205m in BSRC2067 (White Dam)**
- **14m @ 1.11g/t from 314m in BSRC2040 (Jinkas)**

- *2.4m @ 5.70g/t from 224.56m in BSRC2045 (White Dam-Jackson)*
- *7.0m @ 1.96g/t from 180m in BSRC2018 (Jinkas)*
- *9.6m @ 1.24g/t from 231m in BSRC2045 (White Dam)*
- *5m @ 2.31g/t from 238m in BSRC2033 (Jinkas)*

These results continue to demonstrate the growth potential of the KGP, with multiple significant intersections returned outside the current Mineral Resource pit shell across both the Jinkas and White Dam–Jackson lodes.

While the individual intercepts are encouraging, the most significant outcome of the extensional drilling is the demonstration of continuity of mineralisation beyond the existing Resource envelope. Importantly, most of the mineralisation intersected in extensional drilling to date remains sufficiently shallow to be likely to be amenable to future open-pit development scenarios, providing confidence in the potential for future near-term Resource growth.

One diamond drill rig is currently completing two deep holes as part of an EIS-supported program testing down-plunge extensions of the mineralised system up to 700m beyond the current Mineral Resource (Figure 6). The drilling is targeting modelled down-hole electromagnetic (**DHEM**) plate anomalies interpreted to represent potential extensions to the known mineralisation.

Following completion of the current deep drilling program and receipt of all outstanding assay results, Ausgold will define the next phase of Resource extension drilling. This is expected to be undertaken during Q3 2026, concurrently with the planned 25,000m in-fill program commencing this month. This phase of extensional drilling will be supported by further DHEM surveys.

### **Northern Zone**

Three diamond drill holes (BSDD060–062) for 1,345m were completed at Datatine, located approximately 4km north of the Central Zone (Figure 1 and Figure 7). Datatine hosts some of the highest-grade mineralisation within the Katanning Gold Project and was the subject of an EIS-supported drilling program designed to test for extensions to mineralisation up to 500m down-plunge of the current open pit Mineral Resource.

The program successfully intersected mineralisation at depth, with BSDD062, the deepest hole drilled at Datatine to date, returning 9.5m @ 2.44g/t Au from 512m, including 3.2m @ 4.53g/t Au from 513m (Figure 7 and Figure 8).

Ausgold is now updating the Datatine geological and mineralisation model to incorporate the latest drilling results and will undertake underground mining studies, including stope optimisation work, to assess the potential economic viability of an underground mining operation.

## Nanicup Bridge Project – Drilling Results

Nanicup Bridge is located approximately 40km south-east of the Katanning Gold Project, with direct road access connecting the two projects. Historical drilling identified gold mineralisation extending from surface over a strike length of at least 1km.

Ausgold completed 66 RC holes for 5,955m on a nominal 50m × 100m drill spacing across the prospect. The program successfully confirmed the presence of multiple thick mineralised lodes extending over at least 1km of strike. Significant intercepts include:

- **42m @ 0.55g/t from 102m including 5m @ 1.07g/t from 126m in NBRC030**
- **19m @ 0.90g/t from 24m including 3m @ 2.89g/t from 28m in NBRC027**
- **28m @ 0.57g/t from 37m including 4m @ 1.14g/t from 53m in NBRC028**
- **5m @ 1.45g/t from 28m in NBRC052**
- **2m @ 3.41g/t from 49m in NBRC068**

Drilling has confirmed that the mineralised lodes strike north-south, dip approximately 30° to the east, and extend from surface with no evidence of depletion. Gold mineralisation is hosted within biotite-quartz paragneiss and is associated with elevated disseminated pyrite (typically 0.5–2%) in fresh rock.

Importantly, the program has confirmed the presence of a supergene enrichment blanket developed at the base of complete oxidation, with both historical and recent drilling identifying localised zones grading in excess of 2g/t Au.

The results from this program have significantly improved Ausgold's understanding of the geological and mineralisation controls at Nanicup Bridge and provide a strong foundation for the development of a geological model and maiden Mineral Resource. Given its proximity to the KGP, Nanicup Bridge has the potential to evolve into a satellite deposit capable of complementing the Company's existing 2.44Moz Mineral Resource base.

## Further Work

- Completion of the remaining extensional drilling currently planned at the KGP, followed by strategic DHEM surveys to guide further extensional drill planning and execution.
- Commencement of a 25,000m RC program to reduce drill spacing within the first two years of planned mine life to approximately 20m × 20m.
- Receive results from early-stage regional targets Moulyinning and Kraken<sup>2</sup>.

---

<sup>2</sup> For further details on these regional prospects refer to ASX announcement of 15 September 2025

- KGP Resource update in December Quarter.

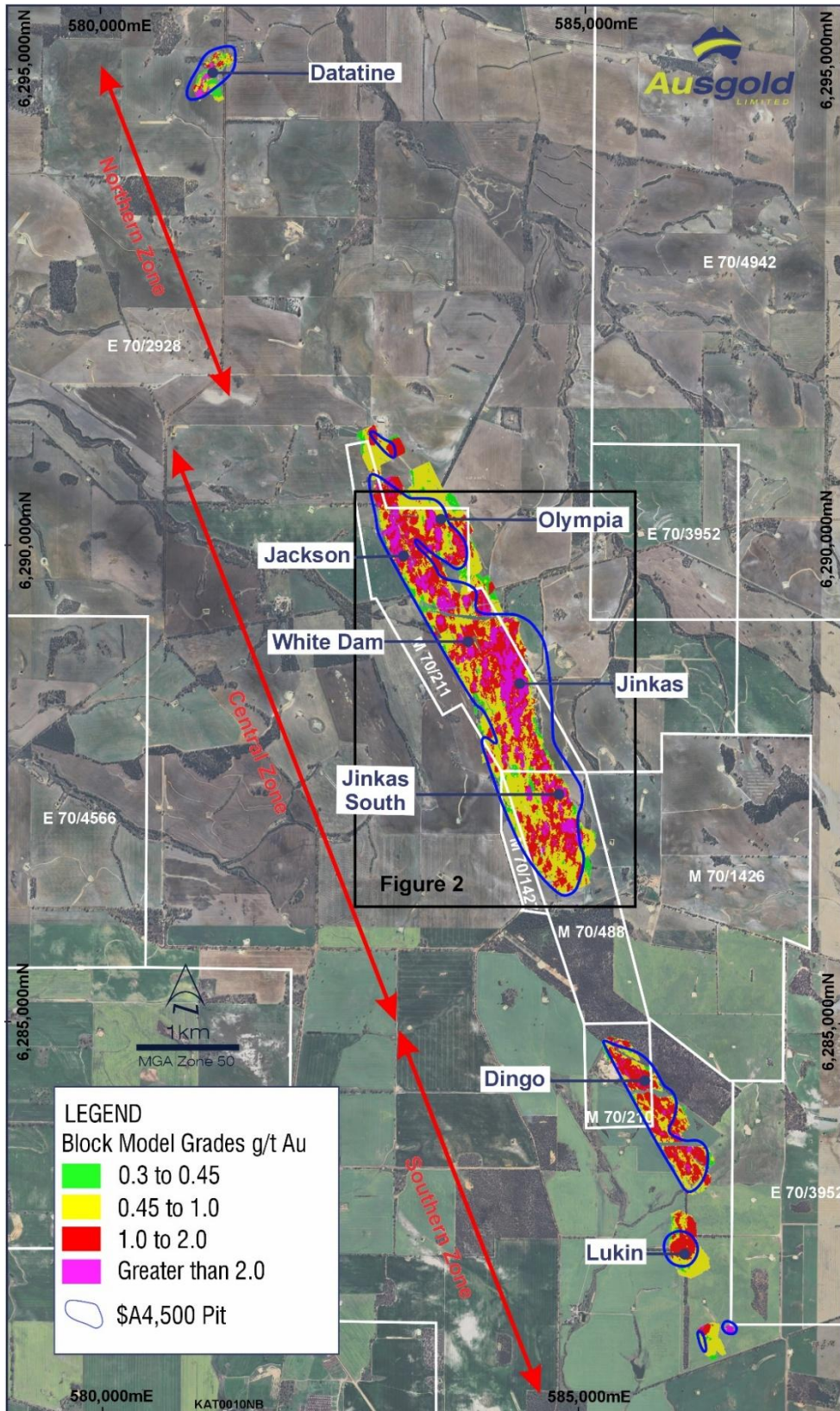


Figure 1 – Plan map of the Katanning Gold Project with the Resource Block Model, \$A4,500 pit outline, an inset (Figure 2) of area of drilling results and current granted tenements

For personal use only

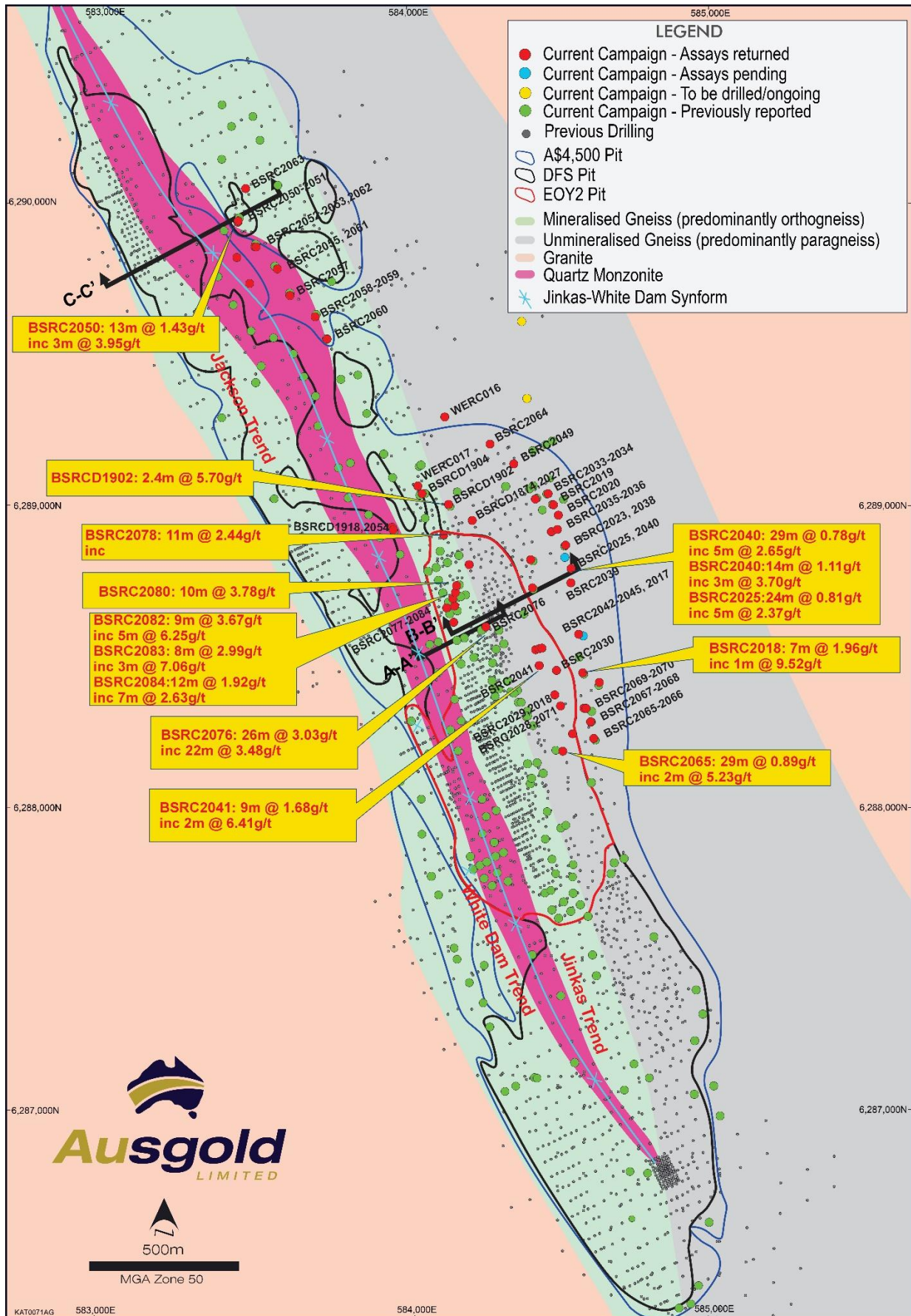


Figure 2 – Geological map of the Central Zone displaying new drilling relative to the DFS pit, end of Year 2 pit and A\$4,500 pit outlines, with location of cross-sections labelled

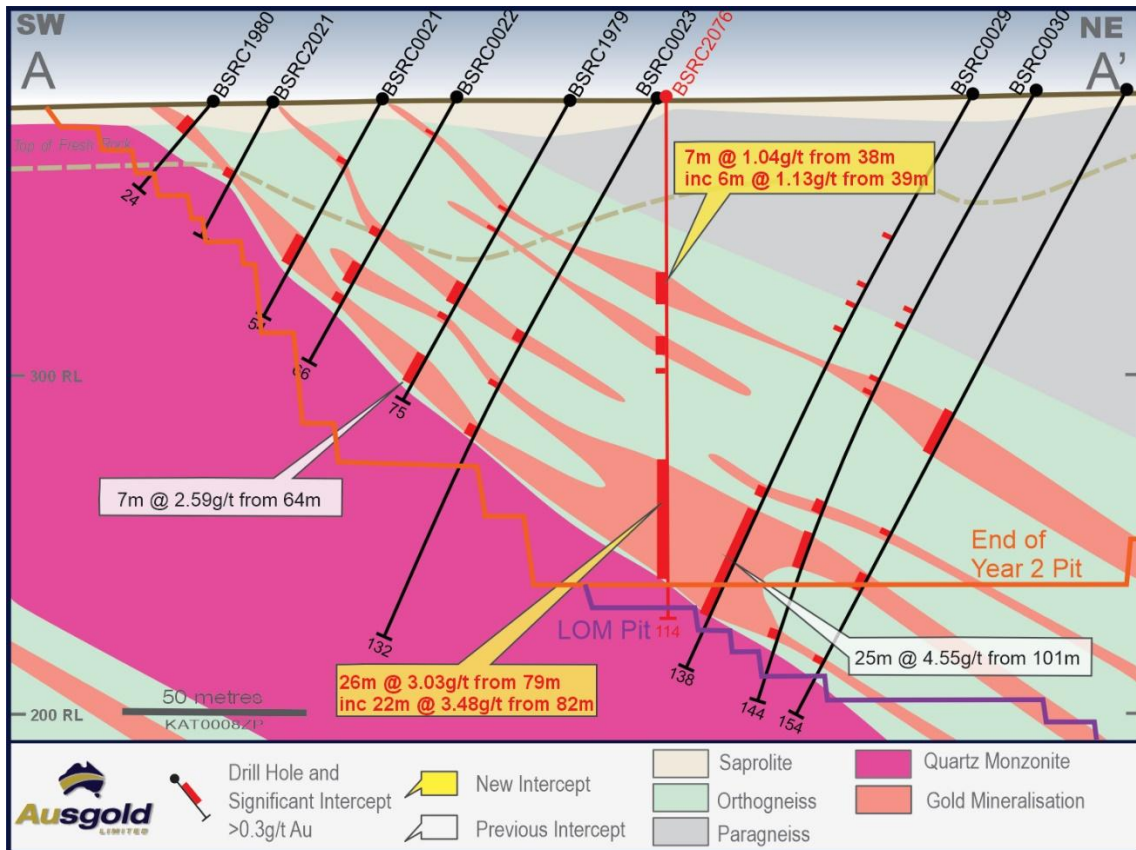


Figure 3 – Cross-section A-A' across the Jinkas Lodes with drilling and DFS Pits

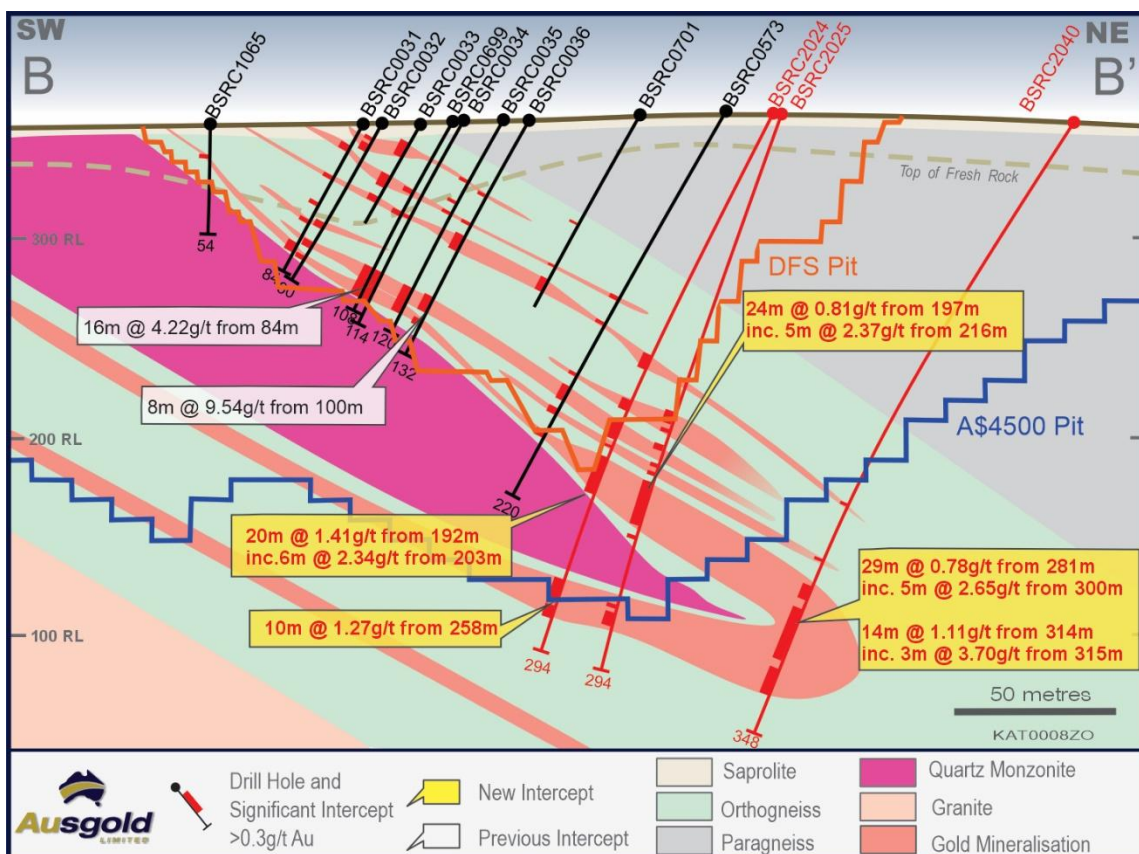


Figure 4 – Cross-section B-B' across the Jinkas-White Dam Lodes with Resource drilling and pits

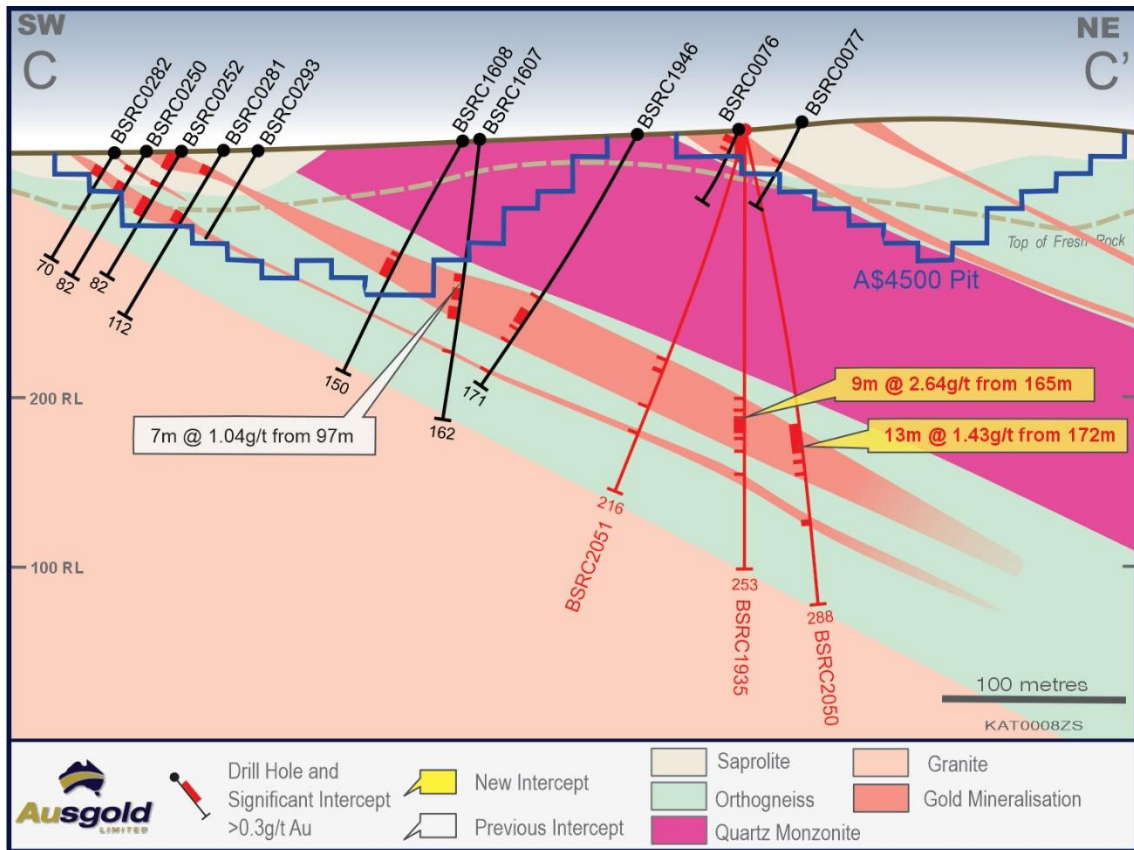


Figure 5 – Cross-section C-C' across the White Dam-Jackson Lodes with Resource drilling and A\$4,500 Resource Pit Shell

For personal use only

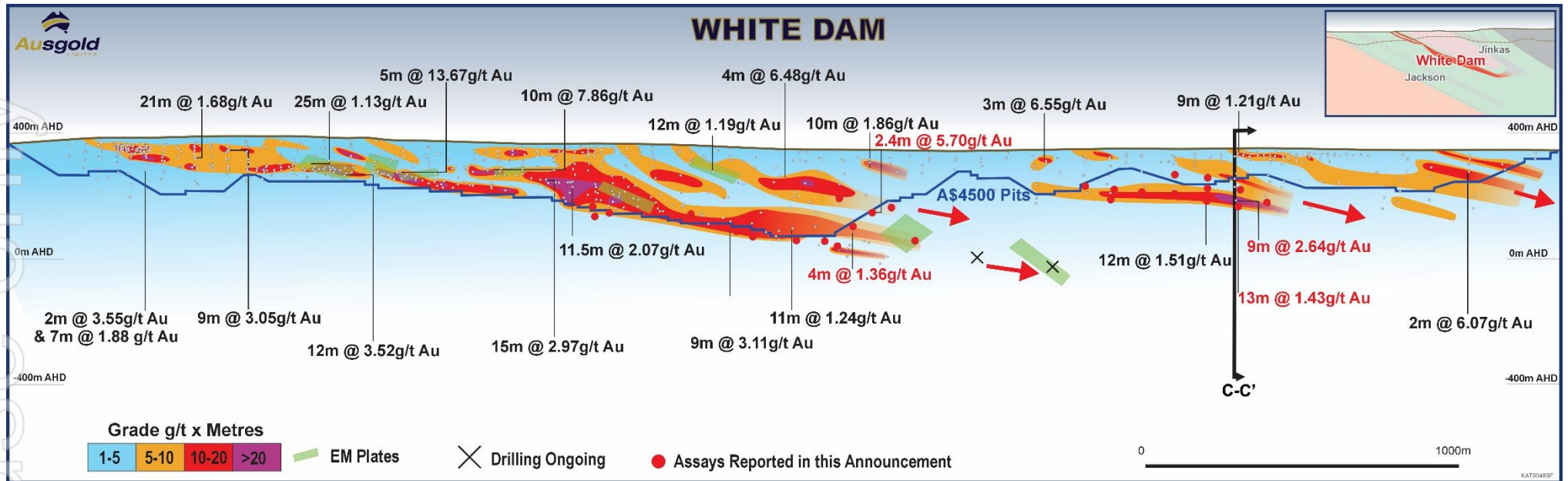


Figure 6 – White Dam trend long-section looking WSW displaying gram-metre contours (0.3g/t Au cut-off), pierce points of existing drilling, DHEM plates, pit optimisation (A\$4,500 Resource constraint) and zones of ongoing drilling

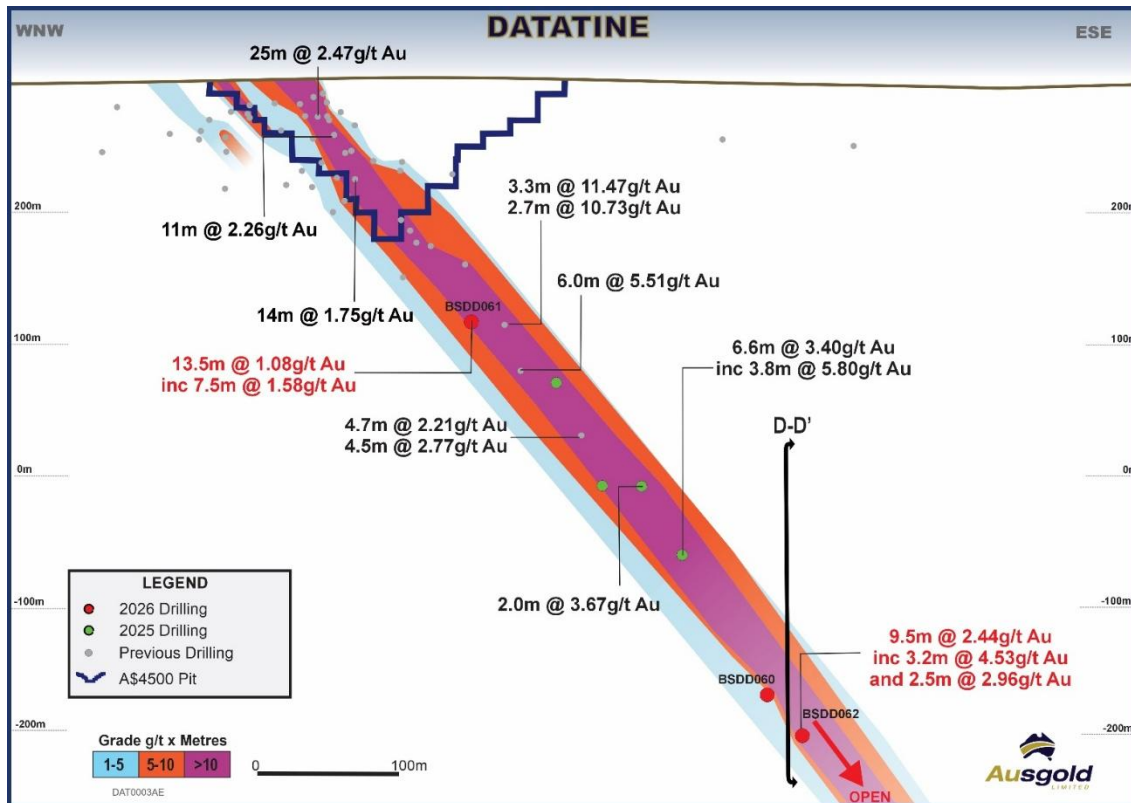
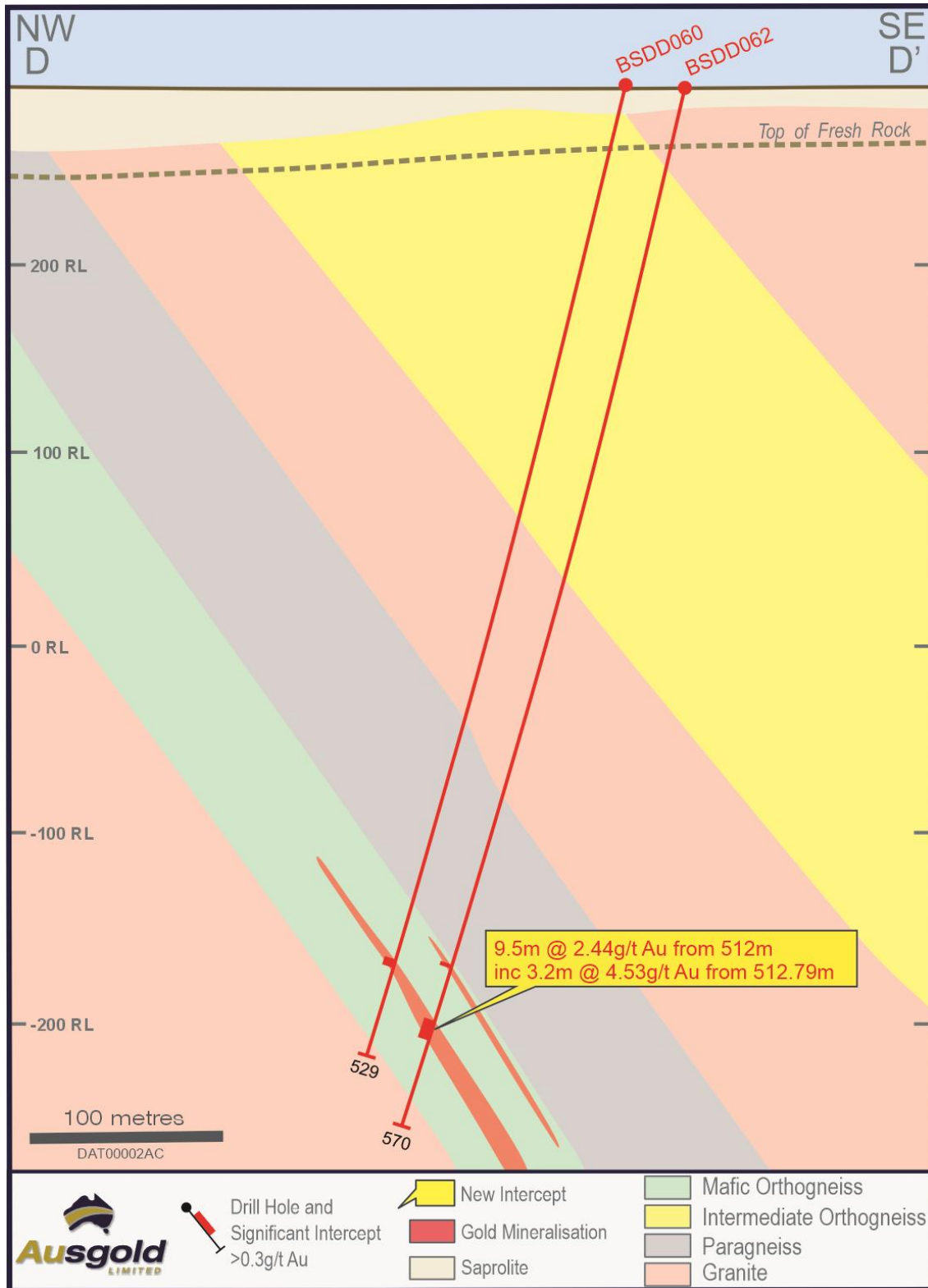


Figure 7 – Datatine long-section looking NNW displaying gram-metre contours (0.3g/t Au cut-off), pierce points of existing drilling, pit optimisation (A\$4,500 Resource constraint) and significant drilling results, with location of cross-section labelled

For personal use only

For personal use only



**Figure 8 – Cross-section D-D' across Datatine with down-plunge drilling and significant drilling results**

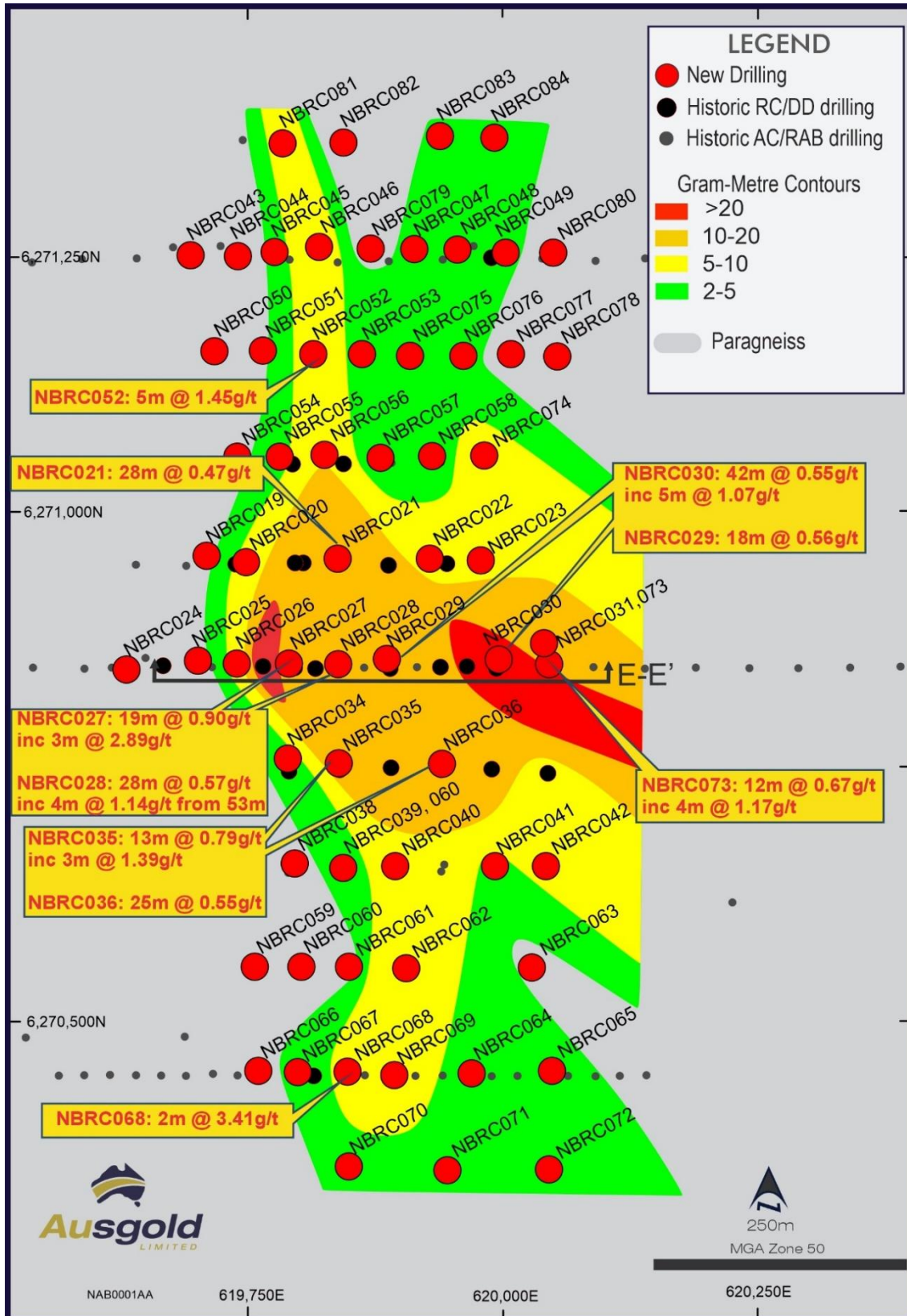


Figure 9 – Geological map of Nanicup Bridge displaying new drilling relative to the historical drilling, with location of cross-section labelled

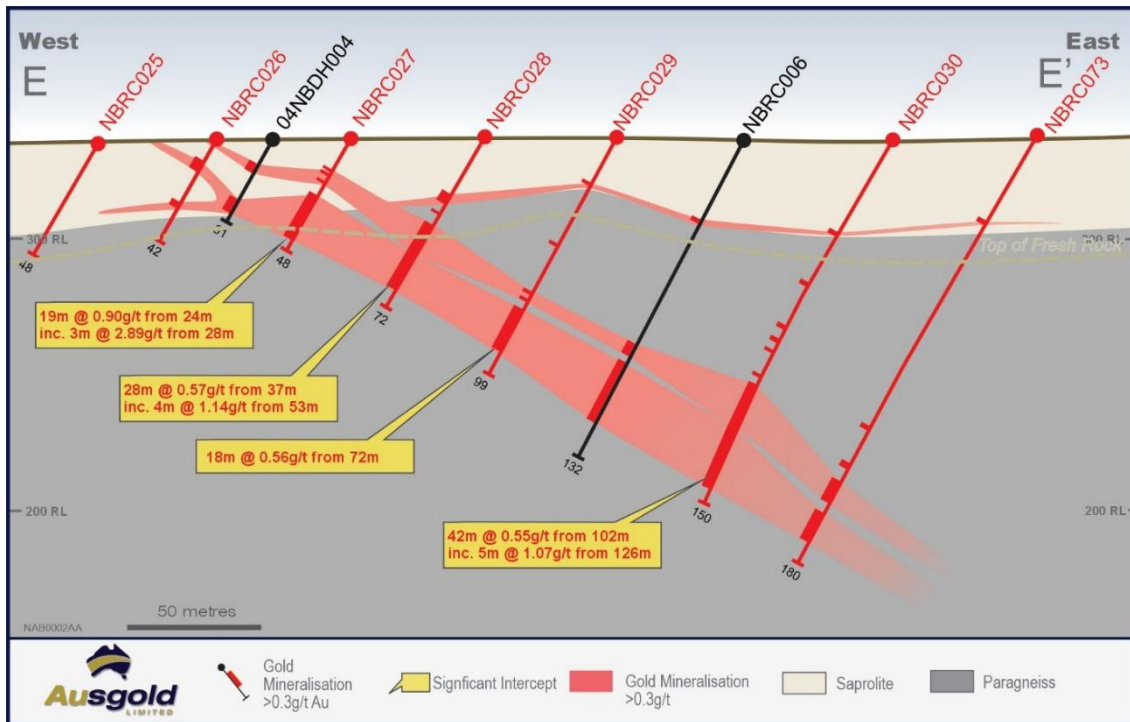


Figure 10 – Cross-section E-E' across Nanicup Bridge with new significant drilling results highlighted

For personal use only

**Table 1 – Significant intercepts**

Hole Id	From	To	Interval (m)	Grade g/t Au
BSDD060	144	145.06	1.06	0.82
BSDD060	477	481.53	4.53	0.82
including	480	481.53	1.53	1.4
BSDD061	161	162	1	0.89
BSDD061	169.5	171	1.5	0.58
BSDD061	181	185	4	0.43
BSDD061	187.65	201.16	13.51	1.08
including	187.65	195.2	7.55	1.58
BSDD062	481.5	482.5	1	0.3
BSDD062	512	521.5	9.5	2.44
including	512.79	516	3.21	4.53
and	519	521.5	2.5	2.96
BSRC2017	155	156	1	0.3
BSRC2017	159	160	1	0.47
BSRC2017	179	180	1	0.41
BSRC2017	184	185	1	0.4
BSRC2017	190	195	5	2.21
including	191	195	4	2.66
BSRC2017	208	213	5	0.78
including	208	209	1	1.62
BSRC2017	216	217	1	0.76
BSRC2017	223	224	1	0.37
BSRC2017	232	234	2	1.21
including	232	233	1	1.5
BSRC2017	238	241	3	2.88
including	238	239	1	7.99
BSRC2017	265	268	3	0.55
BSRC2017	271	273	2	4.99
including	272	273	1	9.59
BSRC2017	278	283	5	0.61
including	281	282	1	1.02
BSRC2018	153	154	1	0.32
BSRC2018	159	160	1	0.36
BSRC2018	170	173	3	1.12
BSRC2018	176	177	1	0.64
BSRC2018	180	187	7	1.96
including	180	182	2	1.4
and	185	186	1	9.52
BSRC2018	190	196	6	0.55
including	191	192	1	1.26
BSRC2018	201	204	3	0.83
including	202	203	1	1.21
BSRC2018	214	215	1	0.34
BSRC2018	220	222	2	0.73
BSRC2018	225	226	1	0.57
BSRC2018	247	250	3	0.3
BSRC2018	254	256	2	1.67
BSRC2018	259	260	1	0.47
BSRC2019	283	284	1	0.4
BSRC2019	290	291	1	0.43
BSRC2019	294	295	1	0.52
BSRC2019	314	316	2	0.38
BSRC2019	323	325	2	0.61
BSRC2019	329	330	1	0.47
BSRC2019	333	336	3	0.57
BSRC2019	340	341	1	0.32
BSRC2019	345	346	1	0.33
BSRC2019	350	351	1	0.48

For personal use only

For personal use only

Hole Id	From	To	Interval (m)	Grade g/t Au
BSRC2020	217	218	1	0.49
BSRC2020	321	322	1	0.46
BSRC2020	327	328	1	0.35
BSRC2025	131	132	1	1.67
BSRC2025	159	167	8	0.65
including	160	161	1	1.86
BSRC2025	170	172	2	0.58
BSRC2025	175	176	1	0.32
BSRC2025	178	181	3	0.33
BSRC2025	187	191	4	0.34
BSRC2025	193	194	1	0.52
BSRC2025	197	221	24	0.81
including	204	205	1	1.18
and	216	221	5	2.37
BSRC2025	227	228	1	0.48
BSRC2025	246	247	1	0.37
BSRC2025	263	264	1	0.86
BSRC2025	267	274	7	0.54
including	267	268	1	1.15
BSRC2026	5	8	3	0.34
BSRC2026	15	16	1	0.32
BSRC2026	51	55	4	0.61
BSRC2026	71	73	2	0.71
BSRC2026	80	84	4	0.79
including	80	81	1	1.2
BSRC2028	83	84	1	0.31
BSRC2028	121	122	1	0.79
BSRC2028	138	139	1	0.56
BSRC2028	144	145	1	1.11
BSRC2028	157	162	5	1.11
including	161	162	1	3.16
BSRC2029	120	121	1	0.48
BSRC2029	128	129	1	0.65
BSRC2029	143	148	5	0.37
BSRC2029	153	154	1	0.32
BSRC2029	160	161	1	0.69
BSRC2030	125	126	1	0.34
BSRC2030	129	130	1	0.92
BSRC2030	137	139	2	1.33
BSRC2030	154	156	2	0.42
BSRC2030	171	172	1	0.3
BSRC2030	174	175	1	0.35
BSRC2030	180	184	4	0.57
including	180	181	1	1.21
BSRC2033	165	169	4	0.73
including	165	166	1	1.29
BSRC2033	182	183	1	0.59
BSRC2033	230	234	4	0.44
BSRC2033	238	243	5	2.31
BSRC2033	246	254	8	0.77
including	246	247	1	3.1
BSRC2033	273	275	2	0.83
including	273	274	1	1.12
BSRC2033	278	281	3	0.92
including	279	280	1	1.37
BSRC2033	335	336	1	0.34
BSRC2034	311	312	1	0.38
BSRC2034	324	325	1	0.76
BSRC2034	330	331	1	0.39
BSRC2034	340	348	8	0.47

For personal use only

Hole Id	From	To	Interval (m)	Grade g/t Au
BSRC2035	251	252	1	0.39
BSRC2035	256	258	2	0.58
BSRC2035	262	263	1	1.36
BSRC2035	287	288	1	0.46
BSRC2035	290	291	1	0.35
BSRC2035	295	297	2	0.36
BSRC2035	300	306	6	0.8
including	301	302	1	1.47
BSRC2035	312	316	4	0.33
BSRC2035	320	321	1	0.3
BSRC2035	326	336	10	0.87
including	327	328	1	1.21
and	331	333	2	2.06
BSRC2036	203	204	1	0.93
BSRC2036	243	245	2	0.92
BSRC2036	265	266	1	0.38
BSRC2036	302	304	2	0.98
including	303	304	1	1.36
BSRC2036	311	312	1	0.42
BSRC2036	326	327	1	0.44
BSRC2038	247	252	5	0.68
including	247	248	1	1.95
BSRC2039	208	209	1	0.33
BSRC2039	221	222	1	0.33
BSRC2039	243	251	8	0.38
including	243	244	1	1.31
BSRC2039	259	265	6	1.53
including	259	262	3	2.49
BSRC2039	269	270	1	0.47
BSRC2039	275	285	10	0.69
including	276	279	3	1.13
and	283	284	1	1.02
BSRC2039	292	298	6	0.73
including	292	294	2	1.2
BSRC2039	301	307	6	0.39
BSRC2040	174	175	1	0.36
BSRC2040	223	224	1	0.34
BSRC2040	242	243	1	0.55
BSRC2040	246	247	1	0.66
BSRC2040	254	255	1	0.65
BSRC2040	270	276	6	1.05
including	275	276	1	3.96
BSRC2040	281	310	29	0.78
including	286	287	1	1.31
and	300	305	5	2.65
BSRC2040	314	328	14	1.11
including	315	318	3	3.7
BSRC2041	90	91	1	3.71
BSRC2041	98	99	1	0.39
BSRC2041	104	105	1	1.16
BSRC2041	115	117	2	0.63
BSRC2041	120	121	1	0.7
BSRC2041	132	134	2	0.75
including	133	134	1	1.08
BSRC2041	138	141	3	2.14
including	138	140	2	2.83
BSRC2041	150	159	9	1.68
including	151	153	2	6.41
BSRC2041	166	168	2	1.38
including	166	167	1	2.37

For personal use only

Hole Id	From	To	Interval (m)	Grade g/t Au
BSRC2042	61	62	1	0.44
BSRC2042	84	86	2	2.25
BSRC2042	103	104	1	4.76
BSRC2042	110	115	5	0.37
BSRC2042	118	119	1	0.42
BSRC2042	123	124	1	0.74
BSRC2042	141	152	11	1.07
including	141	146	5	1.92
BSRC2042	155	157	2	0.6
BSRC2042	174	175	1	0.33
BSRC2044	91	93	2	4.95
including	91	92	1	8.98
BSRC2044	120	121	1	0.32
BSRC2044	133	135	2	0.39
BSRC2044	140	142	2	0.4
BSRC2044	146	147	1	0.82
BSRC2044	150	151	1	0.3
BSRC2044	156	169	13	0.66
including	156	157	1	1.25
and	162	163	1	1.01
and	168	169	1	1.61
BSRC2044	172	176	4	1.11
including	172	174	2	1.79
BSRC2049	261	262	1	0.37
BSRC2049	284	291	7	0.45
BSRC2049	306	310	4	0.37
BSRC2049	312	313	1	0.34
BSRC2049	344	345	1	0.82
BSRC2049	352	355	3	0.91
including	354	355	1	1.63
BSRC2049	364	372	8	0.63
including	368	369	1	1.02
and	370	371	1	1.41
BSRC2050	0	2	2	1.07
including	0	1	1	1.3
BSRC2050	5	11	6	2.82
including	6	11	5	3.24
BSRC2050	17	18	1	0.79
BSRC2050	172	185	13	1.43
including	173	174	1	2.41
and	180	183	3	3.95
BSRC2050	195	197	2	0.41
BSRC2050	204	205	1	0.5
BSRC2050	239	242	3	0.35
BSRC2051	0	8	8	1.46
including	0	5	5	2.14
BSRC2051	15	16	1	7.56
BSRC2051	136	137	1	0.68
BSRC2051	145	147	2	0.43
BSRC2051	169	171	2	2.2
including	170	171	1	4.02
BSRC2051	183	184	1	0.56
BSRC2052	129	132	3	1.32
including	130	132	2	1.51
BSRC2052	140	141	1	0.66
BSRC2052	180	181	1	0.32
BSRC2052	188	189	1	1.23
BSRC2052	200	201	1	0.35
BSRC2052	217	218	1	0.63
BSRC2052	231	232	1	0.33

For personal use only

Hole Id	From	To	Interval (m)	Grade g/t Au
BSRC2053	152	154	2	0.54
BSRC2053	165	172	7	0.61
including	168	169	1	1.59
BSRC2055	45	48	3	0.44
BSRC2055	133	134	1	0.73
BSRC2055	142	143	1	3.9
BSRC2055	147	148	1	1.62
BSRC2055	152	153	1	0.34
BSRC2055	155	156	1	0.33
BSRC2055	163	164	1	0.32
BSRC2055	171	172	1	0.75
BSRC2055	182	183	1	0.39
BSRC2055	184	185	1	0.31
BSRC2055	190	191	1	0.42
BSRC2055	198	199	1	0.56
BSRC2055	209	210	1	0.31
BSRC2055	225	226	1	0.44
BSRC2055	239	240	1	0.39
BSRC2057	107	108	1	0.54
BSRC2057	120	121	1	0.47
BSRC2057	154	155	1	0.93
BSRC2057	167	168	1	0.38
BSRC2057	173	176	3	0.36
BSRC2057	196	197	1	0.64
BSRC2057	203	204	1	0.52
BSRC2058	131	133	2	0.42
BSRC2058	142	145	3	0.39
BSRC2058	165	169	4	0.72
BSRC2058	210	211	1	0.35
BSRC2058	252	253	1	0.53
BSRC2059	127	130	3	0.7
including	127	128	1	1.55
BSRC2059	138	142	4	0.51
BSRC2059	160	161	1	0.38
BSRC2059	162	164	2	0.36
BSRC2059	182	183	1	0.33
BSRC2059	188	189	1	0.31
BSRC2059	224	225	1	0.32
BSRC2059	259	260	1	0.77
BSRC2060	127	129	2	0.53
BSRC2060	147	149	2	0.94
including	147	148	1	1.5
BSRC2060	179	180	1	0.3
BSRC2060	220	221	1	0.41
BSRC2061	88	91	3	0.93
including	89	90	1	1.75
BSRC2061	100	101	1	0.51
BSRC2061	113	114	1	0.34
BSRC2061	148	152	4	0.6
including	148	149	1	1.51
BSRC2061	167	168	1	0.59
BSRC2061	179	180	1	0.32
BSRC2062	102	103	1	0.31
BSRC2062	108	109	1	0.66
BSRC2062	112	113	1	0.74
BSRC2062	131	132	1	0.72
BSRC2062	141	146	5	0.35
BSRC2063	15	16	1	0.33
BSRC2063	22	23	1	0.3
BSRC2063	44	46	2	0.64

For personal use only

Hole Id	From	To	Interval (m)	Grade g/t Au
BSRC2063	179	180	1	0.92
BSRC2063	184	187	3	0.72
including	184	185	1	1.66
BSRC2063	192	194	2	1.93
including	192	193	1	3.47
BSRC2063	197	198	1	0.5
BSRC2063	206	208	2	1.55
including	207	208	1	2.77
BSRC2063	220	223	3	3.17
BSRC2063	245	246	1	1.26
BSRC2063	253	254	1	0.31
BSRC2064	168	171	3	0.78
BSRC2064	174	177	3	0.59
BSRC2064	195	196	1	0.47
BSRC2064	204	205	1	0.35
BSRC2064	217	222	5	1.12
including	221	222	1	3.87
BSRC2064	323	328	5	0.79
including	323	324	1	3.14
BSRC2065	0	6	6	0.59
BSRC2065	9	12	3	0.5
BSRC2065	107	108	1	0.47
BSRC2065	159	188	29	0.89
including	159	160	1	2.76
and	168	169	1	1.77
and	180	182	2	5.23
BSRC2065	204	213	9	1.29
including	206	210	4	2.45
BSRC2065	217	219	2	0.4
BSRC2066	202	204	2	0.38
BSRC2066	208	210	2	0.6
BSRC2067	138	139	1	0.89
BSRC2067	158	159	1	0.44
BSRC2067	171	175	4	0.85
including	171	172	1	1.69
BSRC2067	178	199	21	0.52
including	189	193	4	1.04
BSRC2067	205	216	11	1.54
including	205	206	1	1.64
and	210	214	4	3.24
BSRC2068	168	169	1	0.58
BSRC2068	201	202	1	0.6
BSRC2068	206	207	1	0.3
BSRC2068	214	215	1	0.35
BSRC2068	216	217	1	0.36
BSRC2068	226	229	3	2.12
including	226	228	2	2.93
BSRC2068	241	242	1	0.34
BSRC2069	174	175	1	0.42
BSRC2069	179	180	1	0.32
BSRC2069	182	183	1	0.54
BSRC2069	186	187	1	0.65
BSRC2069	204	206	2	0.52
BSRC2069	212	223	11	0.48
including	219	220	1	1.21
and	222	223	1	1.02
BSRC2069	227	231	4	0.53
BSRC2069	235	246	11	0.38
BSRC2070	163	164	1	0.8
BSRC2070	185	187	2	1.72

For personal use only

Hole Id	From	To	Interval (m)	Grade g/t Au
including	185	186	1	2.85
BSRC2070	192	194	2	0.86
including	193	194	1	1.27
BSRC2070	197	200	3	1.55
including	197	199	2	2.1
BSRC2070	203	204	1	0.52
BSRC2070	210	212	2	0.48
BSRC2070	223	247	24	0.46
BSRC2070	253	254	1	0.32
BSRC2071	180	185	5	0.42
BSRC2071	204	205	1	0.31
BSRC2071	210	211	1	0.46
BSRC2071	214	215	1	1.62
BSRC2071	230	238	8	0.82
including	236	237	1	3.17
BSRC2071	242	249	7	0.64
including	243	244	1	1.06
BSRC2071	252	253	1	0.64
BSRC2071	257	266	9	0.79
including	262	263	1	3.79
BSRC2076	5	6	1	0.65
BSRC2076	38	45	7	1.04
including	39	45	6	1.13
BSRC2076	52	56	4	0.31
BSRC2076	59	60	1	0.44
BSRC2076	79	105	26	3.03
including	82	104	22	3.48
BSRC2077	14	16	2	0.45
BSRC2077	23	27	4	1.55
including	25	27	2	2.51
BSRC2077	34	35	1	0.36
BSRC2077	44	60	16	0.73
including	54	59	5	1.22
BSRC2078	12	15	3	1.47
BSRC2078	42	43	1	0.32
BSRC2078	46	57	11	2.44
BSRC2079	10	12	2	1.41
BSRC2079	16	20	4	0.65
BSRC2079	36	37	1	0.32
BSRC2079	44	54	10	1.16
BSRC2080	46	56	10	3.78
BSRC2081	0	1	1	0.39
BSRC2081	5	12	7	0.75
including	10	11	1	2.28
BSRC2081	15	17	2	0.56
BSRC2081	22	23	1	1.5
BSRC2081	34	35	1	0.45
BSRC2081	40	47	7	1.46
including	40	41	1	4.42
and	45	47	2	2.03
BSRC2082	16	18	2	0.76
BSRC2082	22	23	1	1.34
BSRC2082	34	35	1	0.58
BSRC2082	41	42	1	0.45
BSRC2082	46	55	9	3.67
including	46	51	5	6.25
BSRC2083	9	10	1	0.35
BSRC2083	15	22	7	0.69
including	19	20	1	1.12
BSRC2083	25	33	8	2.99

For personal use only

Hole Id	From	To	Interval (m)	Grade g/t Au
including	25	26	1	1.05
and	30	33	3	7.06
BSRC2083	38	39	1	0.75
BSRC2084	11	12	1	0.46
BSRC2084	23	25	2	0.45
BSRC2084	43	55	12	1.92
including	44	45	1	3.39
and	48	55	7	2.63
BSRCD1874	10	12	2	2.22
including	10	11	1	4
BSRCD1874	30	31	1	0.3
BSRCD1874	37	38	1	0.36
BSRCD1874	45	46	1	0.32
BSRCD1874	52	53	1	0.39
BSRCD1874	61	66	5	0.32
BSRCD1874	181	183.45	2.45	0.74
BSRCD1874	190.57	192	1.43	0.71
BSRCD1902	43	44	1	0.94
BSRCD1902	55	56	1	0.32
BSRCD1902	74	75	1	2.61
BSRCD1902	79	80	1	1.69
BSRCD1902	204	205	1	0.33
BSRCD1902	217.69	220	2.31	0.75
BSRCD1902	224.56	227	2.44	5.7
including	224.56	225.64	1.08	12.55
BSRCD1902	268.34	270	1.66	0.62
BSRCD1902	273.24	274.82	1.58	0.48
BSRCD1902	279.66	282.65	2.99	0.37
BSRCD1904	45	46	1	1.22
BSRCD1904	62	63	1	1.01
BSRCD1904	188	190	2	0.57
BSRCD1904	201	202	1	0.7
BSRCD1904	239	240	1	0.41
BSRCD1904	251.28	255.22	3.94	0.54
BSRCD1918	166.8	172.83	6.03	0.83
including	170	172.83	2.83	1.09
BSRCD2027	47	48	1	1
BSRCD2027	63	64	1	0.39
BSRCD2027	85	86	1	2.52
BSRCD2027	91	92	1	1.37
BSRCD2027	96	97	1	0.3
BSRCD2027	126	127	1	0.3
BSRCD2027	234	235	1	0.49
BSRCD2027	243	244	1	0.37
BSRCD2027	248	252	4	1.36
including	248	250	2	2.3
BSRCD2027	294.45	296.26	1.81	0.44
BSRCD2027	302	303	1	0.41
BSRCD2027	306.1	307.42	1.32	1.81
BSRCD2045	82	83	1	0.45
BSRCD2045	116	121	5	0.58
including	116	117	1	1.41
BSRCD2045	126	128	2	0.61
BSRCD2045	132	133	1	0.4
BSRCD2045	138	144	6	1.4
including	139	144	5	1.51
BSRCD2045	153	154	1	1.36
BSRCD2045	231	240.61	9.61	1.24
including	234	235	1	6.14
BSRCD2054	93	98	5	0.54

For personal use only

Hole Id	From	To	Interval (m)	Grade g/t Au
BSRCD2054	168	169	1	0.34
BSRCD2054	173	174.8	1.8	0.99
NBRC020	0	12	12	0.48
NBRC020	15	19	4	0.38
NBRC021	24	52	28	0.47
including	37	39	2	1.18
NBRC021	62	63	1	0.33
NBRC021	65	66	1	0.31
NBRC022	81	91	10	0.53
including	84	85	1	1.13
NBRC023	97	101	4	0.34
NBRC023	109	114	5	0.39
NBRC023	117	120	3	0.44
NBRC024	0	1	1	0.44
NBRC026	0	2	2	0.92
including	0	1	1	1.39
NBRC026	9	13	4	0.42
NBRC026	26	28	2	0.76
NBRC027	13	14	1	0.3
NBRC027	15	16	1	0.51
NBRC027	18	19	1	0.51
NBRC027	24	43	19	0.9
including	28	31	3	2.89
NBRC028	24	28	4	0.56
NBRC028	32	33	1	0.32
NBRC028	37	65	28	0.57
including	53	57	4	1.14
NBRC029	19	20	1	0.42
NBRC029	45	46	1	0.36
NBRC029	65	66	1	0.3
NBRC029	68	69	1	0.41
NBRC029	72	90	18	0.56
including	85	86	1	1.29
NBRC030	38	39	1	0.4
NBRC030	60	61	1	0.31
NBRC030	78	79	1	0.34
NBRC030	83	85	2	0.59
NBRC030	88	89	1	0.86
NBRC030	98	99	1	2.06
NBRC030	102	144	42	0.55
including	126	131	5	1.07
and	134	135	1	1.34
NBRC031	35	36	1	0.35
NBRC031	47	48	1	0.47
NBRC031	120	121	1	0.43
NBRC031	139	141	2	0.44
NBRC033	36	37	1	0.31
NBRC034	13	14	1	0.34
NBRC034	19	20	1	0.36
NBRC034	38	44	6	0.67
NBRC034	56	57	1	0.34
NBRC035	40	43	3	0.51
NBRC035	47	60	13	0.79
including	47	48	1	1.81
and	54	57	3	1.39
NBRC035	63	70	7	0.43
including	69	70	1	1.52
NBRC036	92	117	25	0.55
including	112	113	1	1.07
and	114	115	1	1.24

For personal use only

Hole Id	From	To	Interval (m)	Grade g/t Au
NBRC037	43	44	1	0.41
NBRC038	9	13	4	0.33
NBRC038	35	36	1	0.44
NBRC039	35	42	7	0.35
NBRC039	49	54	5	0.36
NBRC040	50	51	1	0.36
NBRC040	54	63	9	0.6
including	54	57	3	1.12
NBRC040	68	73	5	0.36
NBRC042	129	130	1	3.34
NBRC042	139	140	1	0.44
NBRC042	143	147	4	0.54
NBRC042	153	155	2	0.47
NBRC045	41	42	1	0.36
NBRC046	18	22	4	1.35
including	18	19	1	4.21
NBRC046	26	27	1	0.32
NBRC048	20	21	1	0.35
NBRC049	14	26	12	0.51
including	17	19	2	1.05
NBRC049	63	64	1	0.36
NBRC049	72	73	1	0.54
NBRC051	29	31	2	0.36
NBRC052	28	33	5	1.45
including	28	29	1	4.68
NBRC052	46	47	1	0.35
NBRC053	0	1	1	0.43
NBRC053	27	35	8	0.48
including	27	28	1	1.43
NBRC053	38	40	2	0.35
NBRC053	50	51	1	0.32
NBRC053	71	72	1	0.87
NBRC053	82	83	1	0.35
NBRC054	0	1	1	0.31
NBRC055	0	1	1	0.58
NBRC055	31	36	5	0.59
including	33	34	1	1.55
NBRC056	0	1	1	0.3
NBRC056	17	20	3	0.49
NBRC056	30	31	1	0.34
NBRC056	48	49	1	0.32
NBRC056	53	54	1	0.48
NBRC057	37	40	3	0.39
NBRC057	43	44	1	0.39
NBRC057	52	53	1	0.32
NBRC057	69	70	1	0.33
NBRC058	53	56	3	0.47
NBRC058	65	66	1	1.26
NBRC059	31	32	1	0.61
NBRC060	6	9	3	0.44
NBRC060	32	38	6	0.64
including	35	37	2	1.23
NBRC061	37	38	1	0.41
NBRC061	45	47	2	0.59
NBRC062	64	69	5	0.51
NBRC062	72	77	5	0.37
NBRC063	121	126	5	0.31
NBRC063	129	132	3	0.37
NBRC064	90	97	7	0.47
including	90	91	1	1.24

For personal use only

Hole Id	From	To	Interval (m)	Grade g/t Au
NBRC064	108	109	1	0.3
NBRC065	100	101	1	0.82
NBRC065	121	122	1	0.34
NBRC065	125	130	5	0.47
NBRC065	151	152	1	0.55
NBRC066	42	44	2	0.46
NBRC067	31	36	5	0.88
including	33	35	2	1.04
NBRC068	49	51	2	3.41
NBRC068	57	58	1	0.32
NBRC069	45	60	15	0.39
NBRC070	2	6	4	0.55
NBRC070	14	15	1	0.93
NBRC071	63	68	5	0.7
including	66	67	1	1.31
NBRC072	116	123	7	0.4
NBRC072	161	162	1	0.3
NBRC073	36	37	1	0.35
NBRC073	124	125	1	0.3
NBRC073	139	141	2	0.47
NBRC073	147	156	9	0.41
NBRC073	160	172	12	0.67
including	162	166	4	1.17
NBRC074	77	78	1	0.35
NBRC074	91	93	2	2.61
NBRC074	124	125	1	0.31
NBRC075	22	26	4	0.84
including	22	23	1	1.06
and	25	26	1	1.01
NBRC075	31	32	1	0.34
NBRC075	42	46	4	0.34
NBRC075	70	71	1	0.36
NBRC075	73	74	1	0.42
NBRC075	105	106	1	0.51
NBRC075	123	124	1	0.3
NBRC076	16	19	3	0.43
NBRC076	22	24	2	0.46
NBRC077	38	39	1	0.8
NBRC077	53	54	1	0.3
NBRC077	59	61	2	0.35
NBRC077	97	98	1	0.3
NBRC077	101	102	1	0.52
NBRC078	156	158	2	0.54
NBRC079	27	29	2	0.8
including	27	28	1	1.26
NBRC079	60	61	1	0.43
NBRC079	65	66	1	0.34
NBRC079	68	69	1	0.43
NBRC079	75	76	1	0.49
NBRC080	29	31	2	0.35
NBRC080	63	66	3	0.43
NBRC080	76	77	1	0.37
NBRC080	90	91	1	0.63
NBRC081	26	27	1	0.71
NBRC082	50	51	1	1.23
WERC017	18	19	1	0.49
WERC017	54	55	1	0.38

**Notes to Table 1.**

For RC drill assay results the intervals reported are thickness-weighted averages (i.e. XXm grading XX grams per tonne gold content). Reported intervals are calculated using  $\geq 0.3\text{g/t Au}$  cut-off grade and using a  $\leq 2\text{m}$  minimum internal dilution. All 'included' intervals are calculated using  $>1.0\text{g/t Au}$  cut-off and using a  $\leq 2\text{m}$  minimum internal dilution.

**Table 2 – Collar Locations**

Hole Id	Total Depth (m)	MGA East	MGA North	RL (m)	Azimuth	Dip	Tenement	Project
BSDD060	528.54	581604	6294894	297	331	-76	E70/2928	Datatine
BSDD061	246.68	581343	6295016	302	333	-76	E70/2928	Datatine
BSDD062	569.97	581619	6294868	297	333	-77	E70/2928	Datatine
BSRC2017	312	584574	6288573	363	253	-55	E70/2928	Jinkas
BSRC2018	300	584586	6288441	367	249	-50	M70/211	Jinkas
BSRC2019	372	584488	6289003	357	244	-61	E70/2928	Jinkas
BSRC2020	378	584507	6288968	358	242	-64	E70/2928	Jinkas
BSRC2025	294	584421	6288724	363	248	-75	M70/211	Jinkas
BSRC2026	93	584210	6288802	352	243	-50	M70/211	Jinkas
BSRC2028	174	584512	6288334	373	247	-55	M70/211	Jinkas
BSRC2029	168	584493	6288372	375	245	-51	M70/211	Jinkas
BSRC2030	189	584498	6288454	371	246	-60	M70/211	Jinkas
BSRC2033	366	584428	6289019	357	244	-59	E70/2928	Jinkas
BSRC2034	378	584470	6289039	356	246	-65	E70/2928	Jinkas
BSRC2035	360	584486	6288912	361	245	-60	E70/2928	Jinkas
BSRC2036	366	584502	6288920	360	246	-65	E70/2928	Jinkas
BSRC2038	354	584529	6288867	360	244	-65	E70/2928	Jinkas
BSRC2039	330	584546	6288742	360	241	-58	E70/2928	Jinkas
BSRC2040	348	584547	6288789	359	244	-58	E70/2928	Jinkas
BSRC2041	180	584443	6288467	376	247	-53	M70/211	Jinkas
BSRC2042	183	584441	6288523	371	245	-52	M70/211	Jinkas
BSRC2044	183	584448	6288513	371	252	-47	M70/211	Jinkas
BSRC2049	414	584357	6289136	352	0	-90	E70/2928	Jinkas
BSRC2050	288	583446	6289940	354	65	-78	M70/211	Jackson
BSRC2051	216	583443	6289939	353	244	-74	M70/211	Jackson
BSRC2052	240	583502	6289856	354	243	-76	M70/211	Jackson
BSRC2053	186	583504	6289857	354	64	-81	M70/211	Jackson
BSRC2055	240	583576	6289780	355	244	-75	M70/211	Jackson
BSRC2057	228	583619	6289691	355	241	-73	M70/211	Jackson
BSRC2058	276	583704	6289622	356	246	-78	M70/211	Jackson
BSRC2059	270	583702	6289621	357	246	-55	M70/211	Jackson
BSRC2060	264	583740	6289550	355	245	-52	M70/211	Jackson
BSRC2061	192	583485	6289734	352	243	-62	M70/211	Jackson
BSRC2062	192	583442	6289821	351	247	-64	M70/211	Jackson
BSRC2063	282	583469	6290046	357	243	-77	M70/211	Jackson
BSRC2064	360	584278	6289202	350	244	-54	E70/2928	Jinkas
BSRC2065	235	584519	6288183	386	241	-78	M70/211	Jinkas
BSRC2066	258	584622	6288228	366	246	-60	M70/211	Jinkas
BSRC2067	246	584551	6288243	370	242	-67	M70/211	Jinkas
BSRC2068	258	584612	6288280	366	245	-73	M70/211	Jinkas
BSRC2069	270	584594	6288326	368	240	-57	M70/211	Jinkas
BSRC2070	264	584597	6288327	368	245	-77	M70/211	Jinkas
BSRC2071	282	584639	6288410	365	244	-68	E70/2928	Jinkas
BSRC2076	114	584262	6288595	360	0	-90	M70/211	Jinkas
BSRC2077	69	584159	6288669	355	63	-78	M70/211	Jinkas
BSRC2078	63	584168	6288733	353	245	-60	M70/211	Jinkas
BSRC2079	60	584165	6288711	353	243	-60	M70/211	Jinkas
BSRC2080	66	584170	6288714	353	242	-75	M70/211	Jinkas
BSRC2081	52	584156	6288690	354	247	-64	M70/211	Jinkas
BSRC2082	60	584147	6288663	355	66	-77	M70/211	Jinkas
BSRC2083	42	584138	6288659	355	0	-90	M70/211	Jinkas
BSRC2084	66	584159	6288613	357	51	-67	M70/211	Jinkas

For personal use only

Hole Id	Total Depth (m)	MGA East	MGA North	RL (m)	Azimuth	Dip	Tenement	Project
BSRCD1874	267.9	584126	6288900	355	240	-59	M70/211	Jackson
BSRCD1902	301.01	584143	6288997	357	249	-60	M70/211	Jackson
BSRCD1904	288.6	584055	6289037	354	241	-71	M70/211	Jackson
BSRCD1918	198.71	583959	6288916	353	245	-59	M70/211	Jackson
BSRCD2027	318.39	584220	6288947	357	246	-63	M70/211	Jackson
BSRCD2045	270.8	584447	6288527	370	243	-73	M70/211	Jinkas
BSRCD2054	204.31	583958	6288920	353	245	-80	M70/211	Jackson
NBRC019	42	619705	6270955	336	273	-61	E70/5042	Nanicup Bridge
NBRC020	42	619753	6270955	337	270	-60	E70/5042	Nanicup Bridge
NBRC021	66	619840	6270955	337	269	-60	E70/5042	Nanicup Bridge
NBRC022	102	619930	6270955	336	271	-60	E70/5042	Nanicup Bridge
NBRC023	126	619980	6270955	335	269	-61	E70/5042	Nanicup Bridge
NBRC024	48	619649	6270855	335	268	-61	E70/5042	Nanicup Bridge
NBRC025	48	619696	6270855	336	270	-60	E70/5042	Nanicup Bridge
NBRC026	42	619740	6270855	337	270	-61	E70/5042	Nanicup Bridge
NBRC027	48	619790	6270855	337	268	-61	E70/5042	Nanicup Bridge
NBRC028	72	619840	6270855	338	268	-61	E70/5042	Nanicup Bridge
NBRC029	99	619889	6270855	338	269	-62	E70/5042	Nanicup Bridge
NBRC030	150	619991	6270855	335	272	-61	E70/5042	Nanicup Bridge
NBRC031	144	620044	6270855	336	272	-60	E70/5042	Nanicup Bridge
NBRC032	54	619696	6270755	335	268	-61	E70/5042	Nanicup Bridge
NBRC033	54	619740	6270755	336	270	-61	E70/5042	Nanicup Bridge
NBRC034	60	619791	6270755	337	269	-61	E70/5042	Nanicup Bridge
NBRC035	81	619840	6270755	337	270	-61	E70/5042	Nanicup Bridge
NBRC036	132	619941	6270755	338	270	-61	E70/5042	Nanicup Bridge
NBRC037	54	619751	6270656	337	273	-60	E70/5042	Nanicup Bridge
NBRC038	54	619797	6270656	338	271	-61	E70/5042	Nanicup Bridge
NBRC039	66	619846	6270655	338	271	-59	E70/5042	Nanicup Bridge
NBRC040	84	619894	6270655	339	272	-61	E70/5042	Nanicup Bridge
NBRC041	105	619942	6270654	339	271	-59	E70/5042	Nanicup Bridge
NBRC042	156	620041	6270655	337	272	-58	E70/5042	Nanicup Bridge
NBRC043	54	619676	6271260	342	271	-59	E70/5042	Nanicup Bridge
NBRC044	54	619723	6271260	341	271	-60	E70/5042	Nanicup Bridge
NBRC045	66	619771	6271260	340	273	-60	E70/5042	Nanicup Bridge
NBRC046	90	619817	6271260	339	271	-60	E70/5042	Nanicup Bridge
NBRC047	42	619921	6271260	337	273	-60	E70/5042	Nanicup Bridge
NBRC048	54	619968	6271260	336	272	-61	E70/5042	Nanicup Bridge
NBRC049	96	620001	6271260	335	272	-63	E70/5042	Nanicup Bridge
NBRC050	48	619711	6271155	339	272	-59	E70/5042	Nanicup Bridge
NBRC051	54	619761	6271155	338	274	-60	E70/5042	Nanicup Bridge
NBRC052	60	619809	6271155	337	273	-60	E70/5042	Nanicup Bridge
NBRC053	102	619858	6271155	336	273	-60	E70/5042	Nanicup Bridge
NBRC054	54	619737	6271055	337	271	-61	E70/5042	Nanicup Bridge
NBRC055	48	619783	6271055	337	272	-60	E70/5042	Nanicup Bridge
NBRC056	60	619832	6271055	336	273	-61	E70/5042	Nanicup Bridge
NBRC057	78	619880	6271055	335	270	-60	E70/5042	Nanicup Bridge
NBRC058	114	619928	6271055	334	273	-60	E70/5042	Nanicup Bridge
NBRC059	60	619755	6270555	338	271	-61	E70/5042	Nanicup Bridge
NBRC060	60	619801	6270555	339	272	-60	E70/5042	Nanicup Bridge
NBRC061	66	619851	6270555	339	271	-60	E70/5042	Nanicup Bridge
NBRC062	84	619904	6270555	337	272	-61	E70/5042	Nanicup Bridge
NBRC063	150	620025	6270558	337	273	-60	E70/5042	Nanicup Bridge
NBRC064	120	619970	6270452	336	271	-60	E70/5042	Nanicup Bridge
NBRC065	156	620050	6270452	335	272	-59	E70/5042	Nanicup Bridge
NBRC066	54	619758	6270452	339	274	-61	E70/5042	Nanicup Bridge
NBRC067	54	619801	6270455	339	271	-60	E70/5042	Nanicup Bridge
NBRC068	66	619848	6270455	339	270	-60	E70/5042	Nanicup Bridge
NBRC069	90	619894	6270447	339	275	-60	E70/5042	Nanicup Bridge
NBRC070	90	619845	6270357	338	274	-60	E70/5042	Nanicup Bridge
NBRC071	132	619946	6270355	337	269	-60	E70/5042	Nanicup Bridge
NBRC072	168	620046	6270355	336	267	-62	E70/5042	Nanicup Bridge

Hole Id	Total Depth (m)	MGA East	MGA North	RL (m)	Azimuth	Dip	Tenement	Project
NBRC073	180	620042	6270866	335	264	-60	E70/5042	Nanicup Bridge
NBRC074	138	619981	6271052	334	271	-61	E70/5042	Nanicup Bridge
NBRC075	126	619909	6271155	335	269	-61	E70/5042	Nanicup Bridge
NBRC076	138	619957	6271155	334	269	-61	E70/5042	Nanicup Bridge
NBRC077	156	620008	6271155	333	271	-61	E70/5042	Nanicup Bridge
NBRC078	180	620057	6271155	332	270	-61	E70/5042	Nanicup Bridge
NBRC079	132	619867	6271260	338	272	-60	E70/5042	Nanicup Bridge
NBRC080	138	620051	6271260	335	271	-60	E70/5042	Nanicup Bridge
NBRC081	90	619742	6271366	343	271	-61	E70/5042	Nanicup Bridge
NBRC082	120	619843	6271365	341	274	-61	E70/5042	Nanicup Bridge
NBRC083	96	619943	6271365	339	271	-61	E70/5042	Nanicup Bridge
NBRC084	108	619992	6271365	339	272	-61	E70/5042	Nanicup Bridge
WERC016	120	584129	6289291	346	0	-90	E70/2928	Water Exploration
WERC017	144	584043	6289061	353	0	-90	M70/211	Water Exploration
WERC018	120	590605	6284803	316	0	-90	E70/4959	Water Exploration
WERC019	120	590076	6285166	319	0	-90	E70/4959	Water Exploration
WERC020	120	588517	6285597	336	0	-90	E70/4968	Water Exploration

For personal use only

---

**The Board of Directors of Ausgold Limited approved this announcement for release to the ASX.**

---

For further information please visit Ausgold's website or contact:

**John Dorward**

Executive Chairman, Ausgold Limited  
T: +61 (08) 9220 9890  
E: investor@ausgoldlimited.com

**Nicholas Read**

Read Corporate  
T: +61 (08) 9388 1474  
E: nicholas@readcorporate.com.au

**Competent Person's Statement**

The information in this announcement that relates to exploration drill results is based on and fairly represents information and supporting documentation compiled by Mr Graham Conner, who is an employee of Ausgold Limited and a Member of The Australian Institute of Geoscientists. Mr Conner takes responsibility for the integrity of the exploration results published herein, including sampling, assaying, QA/QC and the preparation of geological interpretations. Mr Conner has sufficient experience that is relevant to the style of mineralisation and type of deposit under consideration, and to the activities being undertaken, to qualify as a Competent Person under The Australasian Code for Reporting of Exploration Results, Mineral Resources and Ore Reserves (JORC Code, 2012 edition). The Competent Person consents to the inclusion of such information in this report in the form and context in which it appears.

**Forward-Looking Statements**

This Announcement includes "forward-looking statements" as that term within the meaning of securities laws of applicable jurisdictions. Forward-looking statements involve known and unknown risks, uncertainties and other factors that are in some cases beyond Ausgold Limited's control. These forward-looking statements include, but are not limited to, all statements other than statements of historical facts contained in this presentation, including, without limitation, those regarding Ausgold Limited's future expectations. Readers can identify forward-looking statements by terminology such as "aim," "anticipate," "assume," "believe," "continue," "could," "estimate," "expect," "forecast," "intend," "may," "plan," "potential," "predict," "project," "risk," "should," "will" or "would" and other similar expressions. Risks, uncertainties and other factors may cause Ausgold Limited's actual results, performance, production or achievements to differ materially from those expressed or implied by the forward-looking statements (and from past results, performance or achievements). These factors include, but are not limited to, the failure to complete and commission the mine facilities, processing plant and related infrastructure in the time frame and within estimated costs currently planned; variations in global demand and price for coal and base metal materials; fluctuations in exchange rates between the U.S. Dollar, and the Australian dollar; the failure of Ausgold Limited's suppliers, service providers and partners to fulfil their obligations under construction, supply and other agreements; unforeseen geological, physical or meteorological conditions, natural disasters or cyclones; changes in the regulatory environment, industrial disputes, labour shortages, political and other factors; the inability to obtain additional financing, if required, on commercially suitable terms; and global and regional economic conditions. Readers are cautioned not to place undue reliance on forward-looking statements. The information concerning possible production in this announcement is not intended to be a forecast. They are internally generated goals set by the board of directors of Ausgold Limited. The ability of the company to achieve any targets will be largely determined by the company's ability to secure adequate funding, implement mining plans, resolve logistical issues associated with mining and enter into any necessary off take arrangements with reputable third parties. Although Ausgold Limited believes that its expectations reflected in these forward-looking statements are reasonable, such statements involve risks and uncertainties and no assurance can be given that actual results will be consistent with these forward-looking statements.

## Appendix 1: Mineral Resource Estimate and Ore Reserve<sup>3</sup>

### December 2025 Mineral Resource Estimate

RESOURCE CATEGORY	TONNES (MT)	GRADE (G/T AU)	CONTAINED GOLD (OZ)
MEASURED	41.6	1.14	1,531,000
INDICATED	21.2	1.02	693,000
INFERRED	5.9	1.16	219,000
<b>TOTAL RESOURCE</b>	<b>68.6</b>	<b>1.11</b>	<b>2,443,000</b>

### December 2025 Ore Reserve

ORE RESERVE	CATEGORY	ORE (MT)	GRADE (G/T)	CONTAINED GOLD (KOZ)
CENTRAL ZONE	PROVED	29.1	1.14	1,070.0
	PROBABLE	5.4	0.96	168.7
	SUB-TOTAL	32.3	1.12	1,238.7
SOUTH ZONE	PROVED	1.2	0.97	36.5
	PROBABLE	1.7	1.01	54.6
	SUB-TOTAL	2.9	0.99	91.0
<b>TOTAL</b>		<b>37.4</b>	<b>1.11</b>	<b>1,329.7</b>

<sup>3</sup> For further details refer to ASX Announcement dated 16 December 2025. The Company confirms that it is not aware of any new information or data that materially affects the information contained in that announcement and that all material assumptions and technical parameters underpinning the estimates in that announcement continue to apply and have not materially changed.

## Appendix 2: Table 1

### Section 1 Sampling Techniques and Data

(Criteria in this section apply to all succeeding sections.)

Criteria	JORC Code explanation	Commentary
<b>Sampling techniques</b>	<ul style="list-style-type: none"> <li><i>Nature and quality of sampling (e.g. cut channels, random chips, or specific specialised industry standard measurement tools appropriate to the minerals under investigation, such as down hole gamma sondes, or handheld XRF instruments, etc). These examples should not be taken as limiting the broad meaning of sampling.</i></li> <li><i>Include reference to measures taken to ensure sample representivity and the appropriate calibration of any measurement tools or systems used.</i></li> <li><i>Aspects of the determination of mineralisation that are Material to the Public Report.</i></li> <li><i>In cases where 'industry standard' work has been done this would be relatively simple (e.g. 'reverse circulation drilling was used to obtain 1m samples from which 3kg was pulverised to produce a 30g charge for fire assay'). In other cases more explanation may be required, such as where there is coarse gold that has inherent sampling problems. Unusual commodities or mineralisation types (e.g. submarine nodules) may warrant disclosure of detailed information.</i></li> </ul>	<p>The reverse circulation (<b>RC</b>) drilling program referred to in this announcement consists of <b>120</b> RC holes and the RC pre-collar component of <b>7</b> RCD holes for a total <b>19,054m</b>.</p> <p>The diamond (<b>DD</b>) drilling program referred to in this announcement consists of <b>3</b> DD holes and the diamond tail component of <b>7</b> RCD holes for total of <b>2100.91m</b>.</p> <p><b>RC</b> Samples from RC drilling were collected in one metre intervals in mineralised zones with a 1/8 split for assay, split by a cyclone-mounted cone splitter, bagged in pre-numbered calico bags and the remainder retained in large plastic bags.</p> <p>Selected non-mineralised zones were spear sampled over 1m intervals and composited to a 3m sample. Composite spear sampling is only applied in known non-mineralised intervals and is not used within mineralised zones.</p> <p>Field duplicates (additional split from RC) are inserted into the sequence at a rate of 1 in 20 samples.</p> <p>Field certified reference materials and blanks are inserted into the sequence of assay samples at a rate of 1 in 25.</p> <p>Each RC metre sampled weighed approximately 2 to 3 kilograms.</p> <p>Samples were sorted, dried, crushed to 10mm then pulverised to -75µm. Gold was analysed from a 50g charge and using fire assay (Au AA26).</p> <p><b>DD</b> Samples from DD drilling were nominally collected at 1m intervals, however, where appropriate the geologist adjusted these intervals to match geological intervals. Diamond drill core was split using a diamond bladed saw with one half being submitted for analysis, except for BSDD061 which was whole core sampled.</p> <p>QAQC samples consisting of standards and blanks were inserted into the sequence of assay samples at a rate of 1 in 25.</p>

Criteria	JORC Code explanation	Commentary
		<p>Each sample weighed approximately 1 to 3 kilograms.</p> <p>Samples were sorted, dried, crushed to 10mm then pulverised to -75µm. Gold was analysed from a 50g charge and using fire assay (Au AA26).</p>
<b>Drilling techniques</b>	<ul style="list-style-type: none"> <li>• <i>Drill type (e.g. core, reverse circulation, open-hole hammer, rotary air blast, auger, Bangka, sonic, etc) and details (e.g. core diameter, triple or standard tube, depth of diamond tails, face-sampling bit or other type, whether core is oriented and if so, by what method, etc).</i></li> </ul>	<p><b>RC</b> RC drilling was conducted using a truck mounted 660 Schramm reverse circulation rig, using a 139-143mm diameter bit.</p> <p><b>DD</b> Diamond drilling was conducted using a track mounted Sandvik DR800 rig using PQ, HQ and NQ drill sizes (standard tubes). Drill core was orientated at least every 3-6m using an Axis Mining Champ orientation tool (CHAMPORITM).</p>
<b>Drill sample recovery</b>	<ul style="list-style-type: none"> <li>• <i>Method of recording and assessing core and chip sample recoveries and results assessed.</i></li> <li>• <i>Measures taken to maximise sample recovery and ensure representative nature of the samples.</i></li> <li>• <i>Whether a relationship exists between sample recovery and grade and whether sample bias may have occurred due to preferential loss/gain of fine/coarse material.</i></li> </ul>	<p><b>RC</b> A semi-quantitative estimate of sample recovery is done for each sample. Drill sample recovery approximates to 100% in all mineralised zones. Samples were collected dry. Variation from this is recorded in the drill log.</p> <p>The cyclone-mounted cone splitter is cleaned thoroughly between rod changes. The cyclone is cleaned every 30m, or between rod changes when sample is wet. In addition, the cyclone is generally cleaned at the base of transported cover and the base of completed oxidation, and after each hole to minimise cross-hole contamination.</p> <p>The relationship between sample recovery and grade and whether bias has been introduced has not been investigated at this stage.</p> <p><b>DD</b> A quantitative measure of sample recovery was done for each run of core. Recoveries were generally excellent (&gt;95%), with reduced recovery in the initial near-surface material (unmineralised).</p> <p>Given the consistently excellent recoveries, the relationship between sample recovery and grade and whether bias has been introduced has not been investigated at this stage.</p>
<b>Logging</b>	<ul style="list-style-type: none"> <li>• <i>Whether core and chip samples have been geologically and geotechnically logged to a level of detail to support appropriate Mineral Resource estimation, mining studies and metallurgical studies.</i></li> </ul>	<p>All holes in the current program have been geologically logged to a high level of detail to support the definition of geological domains appropriate to support Mineral Resource Estimation and exploration work.</p>

Criteria	JORC Code explanation	Commentary
	<ul style="list-style-type: none"> <li>• <i>Whether logging is qualitative or quantitative in nature. Core (or costean, channel, etc) photography.</i></li> <li>• <i>The total length and percentage of the relevant intersections logged.</i></li> </ul>	<p>Geologists logging drilling have been trained how to log to a high level of detail through their university studies as well as by Supervising Geologists experienced in the geology of the region, including high metamorphic terranes.</p> <p>For RC drilling representative rock chips from every metre were collected in chip trays and logged by the geologist at the drill site.</p> <p>For DD drilling, core was collected in core trays and logged by the geologist at a core yard proximal to the drill site.</p> <p>Lithology, weathering (oxidation state), veining, mineralisation, alteration and structures (diamond only) are recorded in detail using standard digital logging sheets and defined look up tables to ensure that all data is collected consistently.</p> <p>Reference cards aided the logging of sulphides, which along with the experience of logging geologists, ensures sulphide estimates are reliable and reproduceable.</p> <p>Logging data is entered using tablet computers. All data is validated by the logging geologist before being entered in an acquire database.</p> <p>All chip trays and core trays are photographed using a SLR camera and images recorded using the cloud-based system.</p>
<p><b>Sub-sampling techniques and sample preparation</b></p>	<ul style="list-style-type: none"> <li>• <i>If core, whether cut or sawn and whether quarter, half or all core taken.</i></li> <li>• <i>If non-core, whether riffled, tube sampled, rotary split, etc and whether sampled wet or dry.</i></li> <li>• <i>For all sample types, the nature, quality and appropriateness of the sample preparation technique.</i></li> <li>• <i>Quality control procedures adopted for all sub-sampling stages to maximise representivity of samples.</i></li> <li>• <i>Measures taken to ensure that the sampling is representative of the in situ material collected, including for instance results for field duplicate/second-half sampling.</i></li> <li>• <i>Whether sample sizes are appropriate to the</i></li> </ul>	<p><b>RC</b></p> <p>All 1m samples are cone split at the drill rig.</p> <p>All 3m composites collected are speared through the bulk sample for each metre within the large plastic bags and composited into pre-numbered calico bag through the known non-mineralised intervals. These composite samples are recorded in the sample log for each hole.</p> <p>All samples have the aim of being drilled dry, where samples are moist or wet due to ground conditions the rig geologist will record in the sample log for each hole.</p> <p>Field duplicates (additional split from RC) are inserted into the sequence at a rate of 1 in 20 samples.</p> <p>Field certified reference materials and blanks are inserted into the sequence of assay samples at a rate of 1 in 25.</p>

Criteria	JORC Code explanation	Commentary
	<p><i>grain size of the material being sampled.</i></p>	<p><b>DD</b></p> <p>Samples were nominally collected at 1m intervals, however, where appropriate the geologist adjusted these intervals to match geological intervals. Diamond drill core was split using a diamond bladed saw with one half being submitted for analysis, except BSDD061 which was whole core sampled.</p> <p>QAQC samples consisting of standards and blanks were inserted into the sequence of assay samples at a rate of 1 in 25.</p>
<p><b>Quality of assay data and laboratory tests</b></p>	<ul style="list-style-type: none"> <li>• <i>The nature, quality and appropriateness of the assaying and laboratory procedures used and whether the technique is considered partial or total.</i></li> <li>• <i>For geophysical tools, spectrometers, handheld XRF instruments, etc, the parameters used in determining the analysis including instrument make and model, reading times, calibrations factors applied and their derivation, etc.</i></li> <li>• <i>Nature of quality control procedures adopted (e.g. standards, blanks, duplicates, external laboratory checks) and whether acceptable levels of accuracy (i.e. lack of bias) and precision have been established.</i></li> </ul>	<p>Analysis for gold was undertaken by ALS by fire assay (Au AA26), considered to be a 'total assay technique'.</p> <p>Field quality control procedures adopted comprised of entering a sequence of matrix matched commercially certified reference materials (CRM's), and blanks into the sample run at a frequency of approximately 1 in 25 samples for RC drilling. Field duplicates were collected every 1 in 20 samples for RC drilling.</p> <p>For diamond drilling, samples were nominally collected at 1m intervals, however, where appropriate the geologist adjusted these intervals to match geological intervals. Diamond drill core was split using a diamond bladed saw with one quarter being submitted for analysis. QAQC samples consisting of standards and blanks were inserted into the sequence of assay samples at a rate of 1 in 25.</p> <p>Gold CRM's were sourced from Geostats Pty Ltd and are used to check accuracy and bias of the analytical method. Gold certified values range between 0.38g/t and 2.33g/t.</p> <p>Blank material was sourced from Geostats Pty Ltd and should be below detection limits.</p> <p>Standard reference materials are used to check accuracy and bias of the analytical method. The results were similar to the standard concentration for the specific standard.</p> <p>QAQC samples were monitored on a batch-by-batch basis. An assay batch is accepted if the blank samples are within the acceptable limits (5 times the lower detection limit) and the standards are within the + 3SD (standard deviations). One failed standard can cause rejection if the results around the failed standard are not in the normal grade range. A batch is also re-assayed when assay results from two or more standards are outside the acceptable limits. The inserted blank materials did not show any consistent issues with sample contamination.</p> <p>Review of CRM's and blanks suggest an acceptable level of accuracy (lack of bias) is established.</p>

Criteria	JORC Code explanation	Commentary
		<p>The performance of field duplicates in RC samples is generally reasonable and the variations are related to the style of mineralisation.</p> <p>Internal laboratory checks are conducted including insertion of CRM'S, blanks and conducting lab duplicates. Review of the internal laboratory QA/QC checks suggests the laboratory is performing within acceptable limits.</p>
<p><b>Verification of sampling and assaying</b></p>	<ul style="list-style-type: none"> <li>• <i>The verification of significant intersections by either independent or alternative company personnel.</i></li> <li>• <i>The use of twinned holes.</i></li> <li>• <i>Documentation of primary data, data entry procedures, data verification, data storage (physical and electronic) protocols.</i></li> <li>• <i>Discuss any adjustment to assay data.</i></li> </ul>	<p>High standard QAQC procedures are in place therefore repeatability issues from a QAQC point of view are not considered to be significant.</p> <p>Significant and/or unexpected intersections were reviewed by alternate company personnel through review of geological logging data, physical examination of remaining samples and review of digital geological interpretations.</p> <p>All assay data was accepted into the database as supplied by the laboratory.</p> <p>Data importation into the database is documented through standard operating procedures and is guided by acQuire import validations to prevent incorrect data capture/importation.</p> <p>Geological determination data is directly captured in the database through a validation-controlled interface using Toughbook computers and acQuire database import validations.</p> <p>Primary data is stored in its source electronic form. Assay data is retained in both the original certificate (.pdf) form and the text files received from the laboratory. Data entry, validation and storage are discussed in the section on database integrity below.</p> <p>No adjustments to assay data were undertaken.</p>
<p><b>Location of data points</b></p>	<ul style="list-style-type: none"> <li>• <i>Accuracy and quality of surveys used to locate drill holes (collar and down-hole surveys), trenches, mine workings and other locations used in Mineral Resource estimation.</i></li> <li>• <i>Specification of the grid system used.</i></li> <li>• <i>Quality and adequacy of topographic control.</i></li> </ul>	<p>Drill holes are reported in MGA94 datum, UTM zone 50 coordinates. Elevation values are in AHD.</p> <p>Drill hole collars (and drilling foresight/back-sight pegs) were set out and picked up by Ausgold personnel using a differential GPS; which provided +/- 100 millimetre accuracy.</p> <p>An end of hole gyroscopic drill hole survey was completed by the drilling contractors using an Axis Mining Champ Gyro tool. The gyro measured the first shot at 0m followed by every 30m down-hole. The data was examined and validated onsite by the supervising geologist. Any surveys that were spurious were re-taken.</p> <p>Validated surveys are entered into the acQuire data base.</p>

Criteria	JORC Code explanation	Commentary
<b>Data spacing and distribution</b>	<ul style="list-style-type: none"> <li>• <i>Data spacing for reporting of Exploration Results.</i></li> <li>• <i>Whether the data spacing and distribution is sufficient to establish the degree of geological and grade continuity appropriate for the Mineral Resource and Ore Reserve estimation procedure(s) and classifications applied.</i></li> <li>• <i>Whether sample compositing has been applied.</i></li> </ul>	<p>Drilling was conducted on variable spacings. The drilling was largely on a nominal 20-40m hole spacing and 20-80m line spacing at the Katanning Gold Project (Datatine, Jinkas, Jackson).</p> <p>Drilling was conducted on a nominal 50m hole spacing and 100m line spacing grid at Nanicip Bridge</p> <p>Data spacing and distribution is sufficient to establish the degree of geological and grade continuity appropriate for the Mineral Resource and Ore Reserve estimation.</p> <p>No compositing has been applied to mineralised intervals.</p>
<b>Orientation of data in relation to geological structure</b>	<ul style="list-style-type: none"> <li>• <i>Whether the orientation of sampling achieves unbiased sampling of possible structures and the extent to which this is known, considering the deposit type.</i></li> <li>• <i>If the relationship between the drilling orientation and the orientation of key mineralised structures is considered to have introduced a sampling bias, this should be assessed and reported if material.</i></li> </ul>	<p>Within the Central Zone, comprising Jinkas and Jackson, drilling typically angled, (nominally -60 towards 244° with minor variations) tested the east dipping lodes (20 – 35°) and gneissic foliation as to minimise bias. Surface conditions in the drill area mean variations of the nominal drill orientation were used in order to gain access. BSRC2049, 1953, 2076, 2083 and BSRCD2054 were drilled sub-vertically or steeply (&gt;80°). The relationship between the drilling orientation and the orientation of key mineralised structures is considered to have minor sampling bias and is not considered material for the sub-vertical to vertical holes.</p> <p>Within the Northern Zone, comprising Datatine, drilling is angled (nominally -76° to -77° towards ~333°) tested the SE dipping lodes (40 – 55°) and gneissic foliation as to minimise bias. The relationship between the drilling orientation and the orientation of key mineralised structures is considered to have minor sampling bias and is not considered material.</p> <p>Within Nanicip Bridge drilling is angled (-60 towards 270°) to test the east dipping lodes (20 – 35°) and gneissic foliation as to minimise bias.</p> <p>Water Exploration holes were drilled vertically to target water aquifers effectively. No key mineralised structures were intersected by this drilling.</p>
<b>Sample security</b>	<ul style="list-style-type: none"> <li>• <i>The measures taken to ensure sample security.</i></li> </ul>	<p>All drill samples are systematically numbered and placed in pre-printed (numbered) calico bags and placed into numbered polyweave bags which were tied securely and marked with flagging. Assay samples were stored at a dispatch area and dispatched weekly. Samples were shipped via a local logistics company directly to labs in Perth.</p> <p>The sample dispatches were accompanied by supporting documentation signed by the geologist and showing the sample submission number, analysis suite and number of samples. The chain of custody is maintained by the labs once the samples are received on site and a full audit is conducted.</p> <p>Assay results are emailed to the responsible geology administrators in Perth and are loaded into the acquire database through an automated process. QAQC on import is completed before the results are finalised.</p>

Criteria	JORC Code explanation	Commentary
<b>Audits or reviews</b>	<ul style="list-style-type: none"> <li>The results of any audits or reviews of sampling techniques and data.</li> </ul>	<p>Before the commencement of this drilling program, the sampling process was fully reviewed and documented as a standard company process. There were some minor operational and technical adjustments identified to improve validation of collected data, interpretation of data and management of QAQC practices. These improvements have been updated into standard operating procedures (manual).</p>

## Section 2 Reporting of Exploration Results

(Criteria listed in the preceding section also apply to this section.)

Criteria	JORC Code explanation	Commentary
<b>Mineral tenement and land tenure status</b>	<ul style="list-style-type: none"> <li>Type, reference name/number, location and ownership including agreements or material issues with third parties such as joint ventures, partnerships, overriding royalties, native title interests, historical sites, wilderness or national park and environmental settings.</li> <li>The security of the tenure held at the time of reporting along with any known impediments to obtaining a licence to operate in the area.</li> </ul>	<p>Reported results are all from 100% owned Ausgold Exploration Pty Ltd Tenements (wholly owned subsidiary of Ausgold Limited) – E70/2928, E70/4959, E70/4968, E70/5042 and M70/211.</p> <p>The land is used primarily for grazing and cropping.</p> <p>The tenements are in good standing, and all work is conducted under specific approvals from the Department of Mines, Petroleum and Exploration (DMPE).</p> <p>Apart from reserved areas, rights to surface land use are held under freehold titles.</p> <p>Written consent under section 18(3) for Jinkas Hill dated 24 January 2018 was granted by Honourable Ben Wyatt MLA to disturb and remove the registered Aboriginal Heritage Site 5353 known as “Jinkas Hill” which is located on the eastern side of the Jinkas Pit.</p>
<b>Exploration done by other parties</b>	<ul style="list-style-type: none"> <li>Acknowledgment and appraisal of exploration by other parties.</li> </ul>	<p><b>Katanning Gold Project</b></p> <p>Gold mineralisation was discovered by Otter Exploration NL in 1979 at Jinkas Hill, Dyliaibing, Lone Tree and White Dam after following up stream sediment anomalies. Between 1984 and 1988 Otter and related companies evaluated the region with several other explorers including South-West Gold Mines and Minasco Resources Pty Ltd.</p> <p>In 1987, Glengarry Mining NL purchased the project and in 1990 entered into a joint venture with Uranerz who agreed on minimum payments over three years to earn 50% interest. Uranerz withdrew from the project in 1991 after a decision by their parent company in Germany to cease Australian operations.</p> <p>International Mineral Resources NL (IMR) purchased the mining leases and the Grants Patch treatment plant from Glengarry Mining NL in 1995 and commenced mining at the Jinkas deposit in December 1995. Ausgold understands the mine was closed in 1997 after producing approximately 20,000 oz of gold from the Jinkas and Dingo Hill open cuts at a head grade of approximately 2.4g/t. In addition, the mine closure was brought</p>

Criteria	JORC Code explanation	Commentary
		<p>about by a combination of the low gold price of the time (&lt;US\$400/oz) and the inability of the processing plant's comminution circuit to process hard ore from below the base of weathering. Reports from the period indicate that the ore bodies were reasonably predictable in terms of grade and continuity and appeared to produce consistent and reproducible results from grade control (Ravensgate, 1999).</p> <p>Great Southern Resources Pty Ltd (GSR) purchased the mining and exploration leases from IMR in August 2000.</p> <p>Ausgold entered into a joint venture with GSR in August 2010, and the mineral titles were transferred to Ausgold in entirety in August 2011.</p> <p><b>Nanicup Bridge</b></p> <p>Quadrio Pty Ltd a wholly owned subsidiary of Dominion Mining Ltd explored for gold mineralisation at Bullock Pool and Nanicup Bridge between 2000 – 2011.</p> <p>Initial Geochemical sampling on the tenements involved reconnaissance roadside sampling at 500 m spacing along gazetted roads. Follow up infill sampling at 100 meter spacing's before moving into paddock sampling programs. Preference was given to collecting nodular calcrete.</p> <p>A RAB program of 410 holes was completed over the large gold-in-soil anomaly south of the Corneecup Nature reserve, 11 RC holes Further drilling in 2002, 2003 and 2004 was either around the mineralisation at Nanicup or further to the north testing the additional anomalism.</p> <p>This drilling culminated in 2004 with 5 diamond holes drilled at Nanicup prospect where the diamond drilling confirmed the presence of banded felsic gneiss and granulite (with garnet bearing horizons).</p>
<b>Geology</b>	<ul style="list-style-type: none"> <li>• <i>Deposit type, geological setting and style of mineralisation.</i></li> </ul>	<p><b>Katanning Gold Project</b></p> <p>The project includes three main deposit areas named Northern Zone, Central Zone and Southern Zone. Each of these areas are subdivided into a set of mineralised lodes.</p> <p>The majority of the project area is overlain by residual clays with outcrop mostly limited to remnants of lateritic duricrust on topographic highs.</p> <p>Gold mineralisation is hosted by medium to coarse-grained mafic gneisses which dip at around 20° to 45° towards grid east (68°) in Southern and Central Zone and around 30° to 45° towards the WSW in Northern Zone. These units represent Archaean greenstones metamorphosed to granulite facies.</p> <p>The mineralised gneissic units are interlayered with barren quartz-monzonite sills up to approximately 120 metres thick and are cross-cut by several Proterozoic dolerite dykes that post-date mineralisation and granulite metamorphism.</p>

Criteria	JORC Code explanation	Commentary
		<p>Gold predominantly occurs as free gold associated with disseminated pyrrhotite and magnetite, lesser pyrite and chalcopyrite.</p> <p><b>Nanicup Bridge</b> Nanicup Bridge is located in the SE of the Katanning Greenstone Belt (KGB), 40km SE of the Katanning Gold Project (KGP). Nanicup Bridge is located on the crustal-scale Stanley Thrust.</p> <p>The Nanicup Bridge project is comprised of mineralised zones broadly striking north-south and dipping approximately -30° to the east. Gold Mineralisation is hosted within a medium grained quartz biotite paragneiss unit and is associated with pyrite and lesser chalcopyrite mineralisation.</p> <p>The majority of the project area is overlain by residual clays.</p>
<b>Drill hole Information</b>	<ul style="list-style-type: none"> <li>• <i>A summary of all information material to the understanding of the exploration results including a tabulation of the following information for all Material drill holes:</i> <ul style="list-style-type: none"> <li>○ <i>easting and northing of the drill hole collar</i></li> <li>○ <i>elevation or RL (Reduced Level – elevation above sea level in metres) of the drill hole collar</i></li> <li>○ <i>dip and azimuth of the hole</i></li> <li>○ <i>down hole length and interception depth</i></li> <li>○ <i>hole length.</i></li> </ul> </li> <li>• <i>If the exclusion of this information is justified on the basis that the information is not Material and this exclusion does not detract from the understanding of the report, the Competent Person should clearly explain why this is the case.</i></li> </ul>	<p>Plans showing location of drill holes and location of significant results and interpreted trends are provided in the Figures of the report.</p> <p>Details of drill holes including new significant drill results are provided in tables of the report.</p>
<b>Data aggregation methods</b>	<ul style="list-style-type: none"> <li>• <i>In reporting Exploration Results, weighting averaging techniques, maximum and/or minimum grade truncations (e.g. cutting of high grades) and cut-off grades are usually Material and should be stated.</i></li> <li>• <i>Where aggregate intercepts incorporate short</i></li> </ul>	<p>All reported assays have been arithmetically length weighted.</p> <p>For all drill assay results the intervals reported are thickness-weighted averages (i.e. XXm grading XX grams per tonne gold content). Reported intervals are calculated using <math>\geq 0.3\text{g/t Au}</math> cut-off grade and using a <math>\leq 2\text{m}</math> minimum internal dilution (unless otherwise stated). All ‘included’ intervals are calculated using <math>&gt;1.0\text{g/t Au}</math> cut-off and using a <math>\leq 2\text{m}</math> minimum internal dilution (unless otherwise stated).</p>

Criteria	JORC Code explanation	Commentary
	<p><i>lengths of high-grade results and longer lengths of low-grade results, the procedure used for such aggregation should be stated and some typical examples of such aggregations should be shown in detail.</i></p> <ul style="list-style-type: none"> <li>• <i>The assumptions used for any reporting of metal equivalent values should be clearly stated.</i></li> </ul>	
<b>Relationship between mineralisation widths and intercept lengths</b>	<ul style="list-style-type: none"> <li>• <i>These relationships are particularly important in the reporting of Exploration Results.</i></li> <li>• <i>If the geometry of the mineralisation with respect to the drill hole angle is known, its nature should be reported.</i></li> <li>• <i>If it is not known and only the down hole lengths are reported, there should be a clear statement to this effect (e.g. 'down hole length, true width not known').</i></li> </ul>	The geometry of any primary mineralisation at the Katanning Gold Project and Nanicip Bridge is such that it trends N-S to NNW-SSE and dips moderately (20°-45°) to the east. Given this, drilling intersects mineralisation at a high-angle and downhole intercepts approximates true widths in most cases. If down hole length varies significantly from known true width then appropriate notes are provided.
<b>Diagrams</b>	<ul style="list-style-type: none"> <li>• <i>Appropriate maps and sections (with scales) and tabulations of intercepts should be included for any significant discovery being reported These should include, but not be limited to a plan view of drill hole collar locations and appropriate sectional views.</i></li> </ul>	Refer to Figures.
<b>Balanced reporting</b>	<ul style="list-style-type: none"> <li>• <i>Where comprehensive reporting of all Exploration Results is not practicable, representative reporting of both low and high grades and/or widths should be practiced to avoid misleading reporting of Exploration Results.</i></li> </ul>	See Table 1. All intervals above the stated reporting cut-off are included; no selective reporting has occurred.
<b>Other substantive exploration data</b>	<ul style="list-style-type: none"> <li>• <i>Other exploration data, if meaningful and material, should be reported including (but not limited to): geological observations; geophysical survey results; geochemical survey results; bulk samples – size and method of treatment; metallurgical test results; bulk density,</i></li> </ul>	At this stage there is no substantive exploration data from the recent drilling that is meaningful and material to report.

Criteria	JORC Code explanation	Commentary
	<i>groundwater, geotechnical and rock characteristics; potential deleterious or contaminating substances.</i>	
<b>Further work</b>	<ul style="list-style-type: none"> <li>• <i>The nature and scale of planned further work (e.g. tests for lateral extensions or depth extensions or large-scale step-out drilling).</i></li> <li>• <i>Diagrams clearly highlighting the areas of possible extensions, including the main geological interpretations and future drilling areas, provided this information is not commercially sensitive.</i></li> </ul>	See announcement for detail on drilling awaiting assays and upcoming drilling.

personal use only