

NT Geophysics and Drilling Collaborations (GDC) program grant awarded to Westar's Bunda Creek Project

HIGHLIGHTS

- ☆ *Westar has successfully applied to the Northern Territory Government's GDC program to co-fund a regional airborne geophysical survey.*
- ☆ *The aeromagnetic survey will cover 569km² of Westar's Bunda Creek Project in the frontier Birrindudu Basin.*
- ☆ *The survey will provide high-resolution data to better understand the structural configuration of the basin and basement-tapping faults.*
- ☆ *The data will also be used to identify areas of possible hydrothermal alteration that could be associated with sediment-hosted copper.*

Westar Resources Limited (ASX: **WSR**) (**Westar** or the **Company**) is pleased to announce that it has been awarded \$55,689 in Round 19 of the Northern Territory Government's GDC program for an aeromagnetic survey across the Company's Bunda Creek Project.

Westar's application was independently assessed through a competitive application process with only twenty-six companies successful with their application. The GDC program provides funding to accelerate the testing of technically sound exploration concepts.

The GDC program grant will allow Westar to fly an aeromagnetic survey across an unexplored part of the Birrindudu Basin which the Company considers contains the necessary elements to have formed sediment-hosted copper or other base metal deposits.

Non-Executive Director, Eddie King said: *"We are very grateful to the Northern Territory Government's Geophysics and Drilling Collaborations program, under the Resourcing the Territory program. The co-funding will allow Westar to advance its exploration program in a sedimentary basin that is unexplored with a favorable geological setting for copper and other base metal deposits."*

The grant validates the Company's exploration strategy of seeking a tier one type of base metal deposit and will provide Westar with high-resolution data to enable a much more detailed interpretation to be made of the basin and basement architecture. Understanding the architecture is key to de-risking while advancing future drilling programs."

Bunda Creek Project

The Bunda Creek Project comprises a granted Exploration Licence, EL34118, and a contiguous exploration licence application, EL34358, in the Birrindudu Basin in the Northern Territory. Westar is exploring for sediment-hosted copper deposits¹.

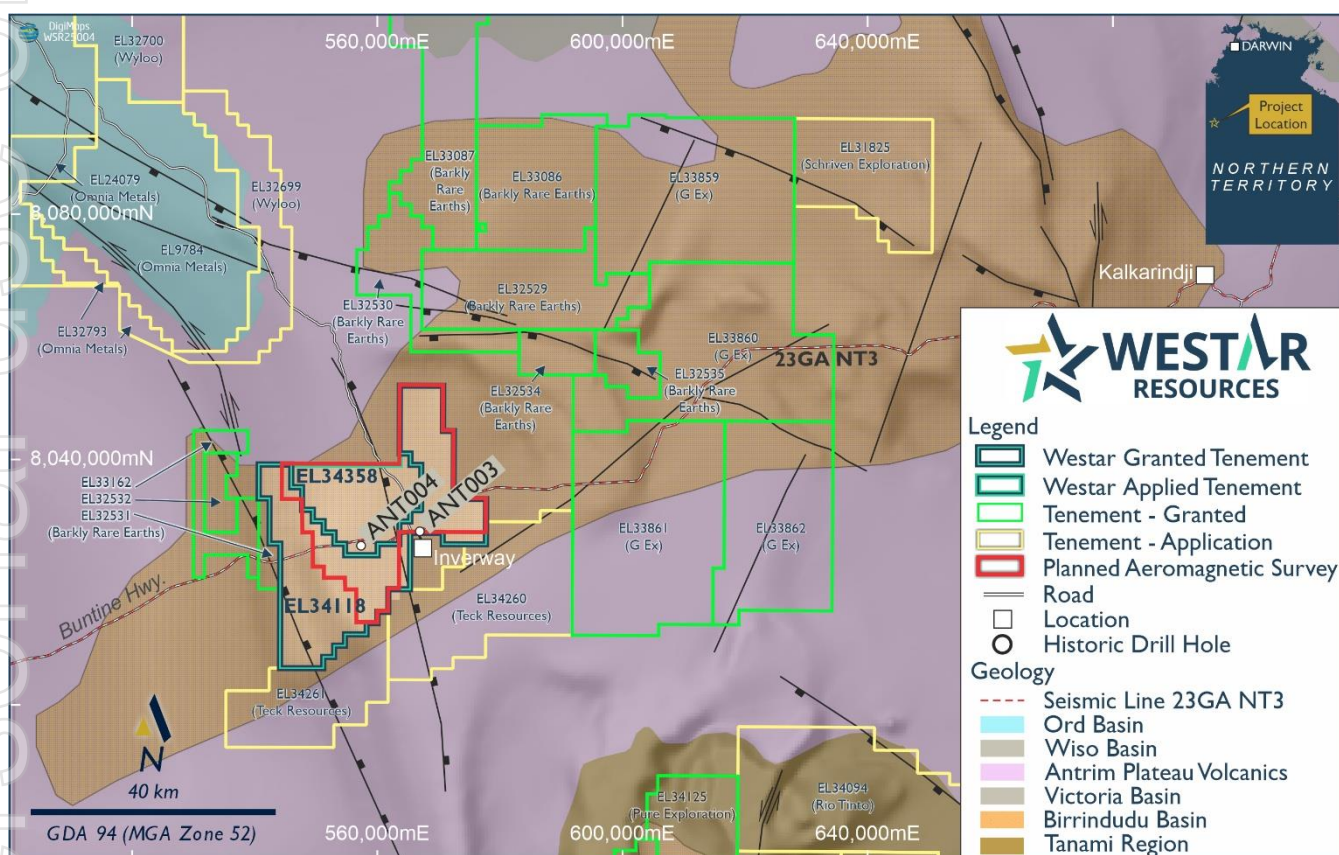


Figure 1. Location of the Bunda Creek Project and regional geological setting. Tenements are plotted on the NTGS 1:2,500,000 geology regions. The structures and underlying basement topography are from SEEBASE².

Recent studies by the Northern Territory Geological Survey (NTGS), CSIRO, and Geoscience Australia (GA) highlight the prospectivity of the basin for copper^{3,4}. Their novel work has provided evidence that a copper source is present, that oxidised basinal fluids have leached copper from the basement geology, and that a suitable reductant is present in the lower part of the succession (Amos Knob Formation within the Limbunya Group). This ongoing work highlights the Birrindudu Basin as a potential new frontier district for copper mineralisation.

There is almost no outcropping stratigraphy of the Birrindudu Basin on the project area. However, the resistive Stirling Sandstone at the base of the Limbunya Group (the target stratigraphy) has been mapped along the southern and eastern edges of the project area⁵. This distribution, and mapped structures by NTGS, suggests a large syncline or synclinorium plunging very gently to the north-northwest with smaller scale folds and possible strike-slip faults in the basement. The presence of the lower part of the Limbunya Group on EL34118 is corroborated by drill hole ANT003 and the regional seismic line 23GA-NT3 that

crosses the project area. Hole ANT003 intersected a black pyritic mudstone (Amos Knob Formation) at about 300m depth. Locally, the presence of evaporites within the group also provides a ready source of salt for basinal brines to transport copper.

The planned aeromagnetic survey will cover about 569km² of the southwestern part of the Birrindudu Basin. The survey is designed to overlap the eastern edge of an existing 100m line-spaced survey to the west. Westar's survey, together with the 2013 survey, will provide continuous coverage over about 1,200km² in a data-poor region of the Birrindudu Basin. The aeromagnetic survey will provide information on the structural configuration of the basin in the project area, including a series of north-northwest-trending faults that may have acted as conduits for mineralising fluids. The survey is aiming to define areas of structural complexity combined with areas of thinned stratigraphy and basement highs.

During the March 2026 quarter, Russell Mortimer from Southern Geoscience produced 3D inversion models for the enhanced reprocessed publicly available airborne magnetic data from the project and the surrounding area. The models show several steep, north-northwest-trending magnetic gradients, at least one of which does not correspond with any previously mapped features. As a result, Westar lodged an application (EL34358) adjoining granted EL34118⁶.

References in this Release

1. ASX: WSR, New copper tenement application in the NT, 7 July 2025.
2. Northern Territory Geological Survey and Geognostics Australia Pty Ltd, 2021. Northern Territory SEEBASE[®] and GIS - Gravity and Magnetics. Northern Territory Geological Survey, Digital Information Package DIP 031.
3. Schmid, S. and Baumgartner, R. (2024), First insights into the sediment hosted copper mineral system of the Birrindudu Basin, NT. Northern Territory Geological Survey, Record 2024-002.
4. Schmid, S & Crombez, V, (2023), Proterozoic sediment-hosted copper mineral systems in the Birrindudu Basin, Northern Territory. 6IAS: 6th International Archean Symposium – abstracts, p.184–185.
5. Cutovinos A, Beier PR, Kruse PD, Abbott ST, Dunster JN and Brescianini RF, 2002. Limbunya, Northern Territory (Second Edition). 1:250 000 geological map series explanatory notes, SE 52-07. Northern Territory Geological Survey, Darwin and Alice Springs.
6. ASX: WSR, Quarterly Activities Report and Appendix 5B March Quarter 2026, 15 April 2026.

For the purpose of Listing Rule 15.5, this announcement has been authorised by the board of Westar Resources Ltd.

ENQUIRIES

Eddie King, Non Executive Director | admin@westar.net.au | Ph: (08) 6556 6000

The information in this announcement that relates to Exploration Results is based on, and fairly represents, information compiled by Steve Sheppard, a Competent Person who is a Registered Member of the Australian Institute of Geoscientists (AIG; Member ID 5290). Steve is a fulltime employee of Westar Resources Ltd and has sufficient experience that is relevant to the style of mineralisation and type of deposit under consideration and to the activity that he has undertaken to qualify as a Competent Person as defined in the 2012 edition of the JORC Code. Steve consents to the inclusion in the report of the matters based on his information in the form and context in which it appears.

The information that has been extracted from prior announcements referred to in this release, are available to view on <https://westar.net.au/>. The company confirms that it is not aware of any new information or data that materially affects the information included in the original market announcement and, in the case of exploration results, that all material assumptions and technical parameters underpinning the estimates in the relevant market announcement continue to apply and have not materially changed. The company confirms that the form and context in which the Competent Person's findings are presented have not been materially modified from the original market announcement.'

Forward-Looking Statements

This document may include forward-looking statements. Forward-looking statements include, but are not limited to, statements concerning Westar Resources Limited's planned exploration program and other statements that are not historical facts. When used in this document, the words such as "could," "plan," "estimate," "expect," "intend," "may", "potential," "should," and similar expressions are forward-looking statements. Although Westar Resources Limited believes that its expectations reflected in these forward-looking statements are reasonable, such statements involve risks and uncertainties and no assurance can be given that actual results will be consistent with these forward-looking statements.

About Westar Resources Ltd

Westar Resources is a Perth-based resource company focused on creating value for shareholders and the communities we live and work in, through the discovery, acquisition and development of high-quality gold and copper projects in supportive jurisdictions. Westar's projects are strategically located in the highly prospective Yilgarn Craton near Southern Cross, Sandstone and Laverton in Western Australia and in the frontier Birrindudu Basin in the Northern Territory.

