



Interpretation of High-Resolution Geophysics at Music Valley HREE Project

Highlights

- **Magnetic and Radiometric Processing Completed:** Mitre Geophysics has completed processing of the Music Valley HREE Project datasets.
- **Favourable Structural Setting:** The interpretation highlights numerous structures across the project area, increasing the likelihood for HREE concentration.
- **Priority Areas of Interest:** Three prospect areas identified for follow up are all located on claims unaffected by the current litigation.
- **Mapping Geophysical Targets:** Ground truth mapping underway by Dateline's HREE and structural geology consultants to confirm correlation with geophysical anomalies.

Dateline Resources Limited (ASX: DTR, OTCQB: DTREF, FSE: YE1) (**Dateline** or **the Company**) is pleased to announce the geophysical interpretation of the Music Valley Heavy Rare Earth Project (**Music Valley**), located in Riverside and San Bernardino Counties, California, USA.

The magnetic and radiometric survey undertaken in March 2026 included all the 20,520 acres highlighted in the Music Valley Project announcement (ASX Announcement 11 March 2026). The survey details are described in Appendix 1.

The geophysical interpretation highlights significant structural detail, corresponding with areas that the USGS has mapped containing the favourable Pinto Gneiss unit. The Thorium rich domains appear to be the best proxy for HREE mineralisation, with local faulting and contact with younger diorite intrusions expected to be the most prospective targets for exploration. The coincidence of these three features will be the focus of future mapping, sampling and drilling campaigns.

All three priority prospects are located outside the 252 claims that are the subject of court proceedings.

Dateline's Managing Director, Stephen Baghdadi, commented:

"Music Valley has always had the ingredients of a significant heavy rare earth district. What these surveys have done is show us where those ingredients come together."

"The interpretation has identified a series of structurally complex zones associated with elevated thorium signatures and favourable Pinto Gneiss geology. These are precisely the types of settings where we would expect rare earth mineralisation to be concentrated."

"Rather than searching across a large land package, we are now focusing on a small number of highly prospective target areas. Tony Mariano Jr and Russell Mason are currently ground-truthing these prospects, and that work will guide the next phase of sampling and drill targeting."

Capital Structure

ASX Code	DTR
OTCQB Code	DTREF
FSE Code	YE1
Shares on Issue	3.83B
Top 20 Shareholders	78.8%

Board of Directors

Mark Johnson AO Non-Executive Chairman	Phillips Baker Jr Non-Executive Director
Stephen Baghdadi Managing Director	Greg Hall Non-Executive Director
George Brack Non-Executive Director	Tony Ferguson Non-Executive Director

Contact

Level 17, 2 Chifley Square
Sydney, NSW, 2000
T +61 2 9375 2353
E info@datelineresources.com.au
W www.datelineresources.com.au

Survey Interpretation

The most interesting feature was noted with the Th^2/U ratio map from the radiometric survey. The high Th is considered a proxy for elevated HREE in the minerals monazite and xenotime. The processed data highlighted a number of structurally complex zones on the western side of the project for further examination. These appear to correlate in some zones where the Pinto Gneiss was mapped at the regional scale.

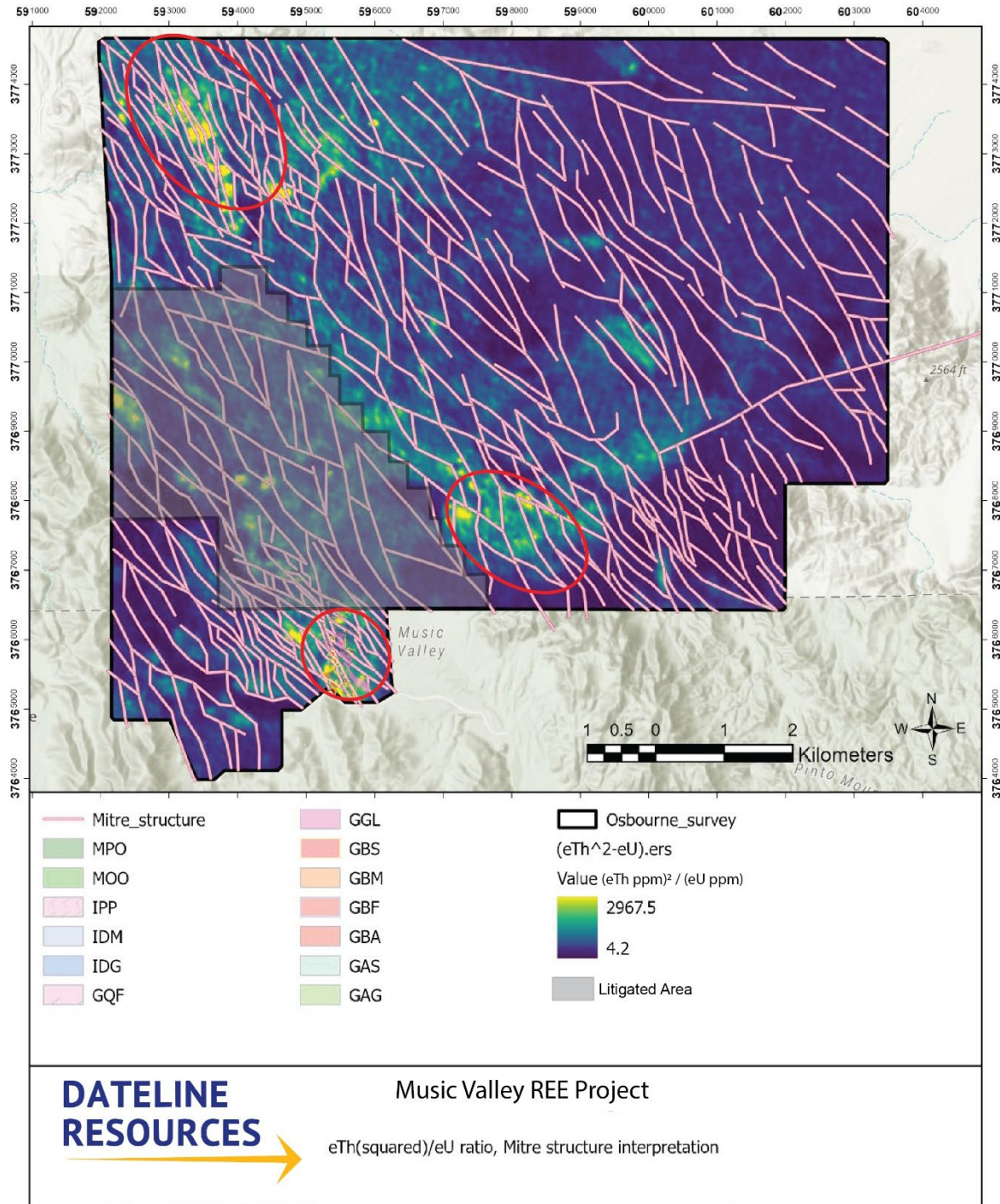


Figure 1: Th^2/U ratio map (Viridis colour palette, with 5% standard deviation stretch) developed to show high Thorium concentrations relative to normal granite / granite gneiss ($Th/U \sim 1$). The three priority prospects are highlighted.

The interpretation of the magnetic and radiometric surveys highlights two major structural trends, one trending 286° that is related to the Pinto Mountain Fault and a younger set trending more towards 330°. The Pinto Mountain Fault is connected to the San Andreas Fault Zone, which is a right lateral system taking up strain from the interaction of the continental US Plate with the Pacific Plate.

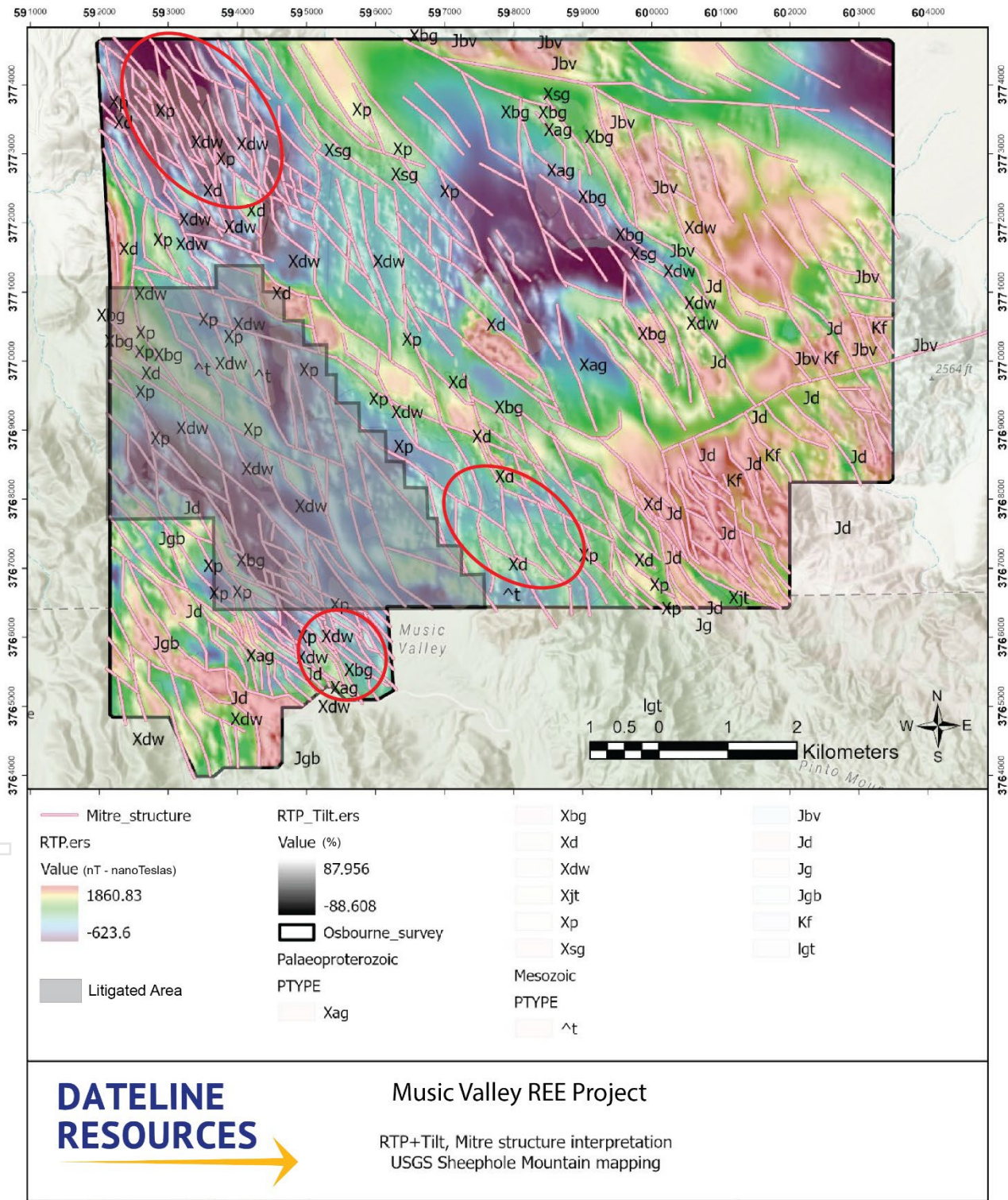


Figure 2: Reduced to Pole (RTP) residual total magnetic intensity data, underlain by the Tilt filtered version of this data, with Mitre structural interpretation overlain. The geology denoted as Xp represents the Pinto Gneiss target unit.

The younger 330° structures are more prevalent and have intensely deformed the older primary fabrics, leading to structural complexity on the ground. This was mapped by the Dateline consultants, who identified a more complex geology than shown in the regional scale mapping.

Commentary

The aerial geophysics surveys confirms that the Music Valley Project area has a number of structures that have the likelihood to concentrate fluids, with near E-W structures connected to and reacting to the San Andreas Fault Zone to the west. Very young transpressional faulting, mostly represented by the more 330° striking structures, are accommodating rotation around vertical axes. With all this very intense recent deformation, the preservation of much older (Paleoproterozoic) primary fabrics that have not been reactivated and transposed into the present day deformation fabric is unlikely.

The radiometric signature, particularly the Th elevation, shows that there is a strong structural overprint, rather than high radiogenic activity simply being controlled by lithology. This implies that whilst the Pinto Gneiss is the target rock unit, enrichment of REEs is likely to occur in areas of structural faulting where it has been concentrated.

There are three main zones identified for detailed ground truth mapping and sampling follow up. The southern area in the acquired Fermi claims has USGS mapped Pinto Gneiss and anomalous Th, the high Th zones in the NW corner of the project warrant attention and a zone in the southern centre of the project also contains anomalous Th values.

The three priority target zones for follow up are either within the claims acquired from Fermi Critical Minerals or within staked claims that are outside of the claims currently under litigation by US1 Critical Minerals.

Tony Mariano Jr and Russell Mason are currently at Music Valley undertaking ground truth mapping of the three priority prospects. A larger scale rock chip sampling program will be undertaken as part of this campaign. We expect to have further information on these priority prospects in the next two weeks.





This ASX announcement has been authorised for release by the Board of Dateline Resources Limited.

For more information, please contact:

Stephen Baghdadi
Managing Director
+61 2 9375 2353
www.datelineresources.com.au

Andrew Rowell
Corporate & Investor Relations Manager
+61 400 466 226
a.rowell@dtraux.com

Follow Dateline on socials:

-  @Dateline_DTR
-  @dateline_resources
-  dateline-resources
-  @dateline.resources

About Dateline Resources Limited

Dateline Resources Limited (ASX: DTR, OTCQB: DTREF, FSE: YE1) is an Australian company focused on mining and exploration in North America. The Company owns 100% of the Colosseum Gold-HREE Project in California.

The Colosseum Gold Mine is located in the Walker Lane Trend in East San Bernardino County, California and is located 10km north of Mountain Pass rare earth mine. Drill testing the HREE potential at Colosseum has commenced.

On 11 May 2026, Dateline announced that the BFS economics for the Colosseum Gold Project generated a pre-tax NPV₅ of US\$785 million and a pre-tax IRR of 49.5% using a gold price of US\$4,200/oz.

Dateline has also acquired the high-grade Argos Strontium Project, also located in San Bernadino County, California. Argos is reportedly the largest strontium deposit in the U.S. with previous celestite production grading 95%+ SrSO₄.

In March 2026, Dateline consolidated the Music Valley Heavy Rare Earth Project in Riverside and San Bernardino Counties, California. The region has known HREE mineralisation from USGS rock chip sampling, however it has not been subjected to modern exploration techniques.

Forward-Looking Statements

This announcement may contain “forward-looking statements” concerning Dateline Resources that are subject to risks and uncertainties. Generally, the words “will”, “may”, “should”, “continue”, “believes”, “expects”, “intends”, “anticipates” or similar expressions identify forward-looking statements. These forward-looking statements involve risks and uncertainties that could cause actual results to differ materially from those expressed in the forward-looking statements. Many of these risks and uncertainties relate to factors that are beyond Dateline Resources’ ability to control or estimate precisely, such as future market conditions, changes in regulatory environment and the behaviour of other market participants. Dateline Resources cannot give any assurance that such forward-looking statements will prove to have been correct. The reader is cautioned not to place undue reliance on these forward-looking statements. Dateline Resources assumes no obligation and does not undertake any obligation to update or revise publicly any of the forward-looking statements set out herein, whether as a result of new information, future events or otherwise, except to the extent legally required.

Competent Person Statement

Sample preparation and any exploration information in this announcement is based upon work reviewed by Mr Greg Hall who is a Chartered Professional of the Australasian Institute of Mining and Metallurgy (CP-IMM). Mr Hall has sufficient experience that is relevant to the style of mineralization and type of deposit under consideration and to the activity which he is undertaking to qualify as a Competent Person as defined in the 2012 Edition of the "Australasian Code for Reporting Exploration Results, Mineral Resources and Ore Reserves" (JORC Code). Mr Hall is a Non-Executive Director of Dateline Resources Limited and consents to the inclusion in the report of the matters based on this information in the form and context in which it appears.

For personal use

Appendix 1 – Geophysical Survey Background

Precision GeoSurveys was contracted to fly a helicopter-borne magnetic and radiometric survey over the expanded Music Valley HREE Project area. The magnetic sensor was flown in a non-magnetic and non-conductive nose stinger configuration. The gamma (radiometric) detector was flown internal to the helicopter, away from variable fuel cell attenuation. Compared to conventional slung bird-type survey systems, this innovative design allowed the survey to be safely flown at reduced terrain clearance to minimise noise, improve resolution, and reduce the need for complex corrections to the data.

The survey was flown in a systematic low-level grid pattern at an orientation of 060°/ 240° for the primary survey lines. The line spacing was 50m and the flight height was 30m. There were 242 survey lines for 1,45km, 29 tie lines for 195km and 5 special lines for 32km, with a total survey length of 2,172 line kilometres. The helicopter used for the survey was an Airbus AS350.

The magnetic data was collected using a Scintrex CS-3 cesium vapor airborne magnetometer sensor. It had a sensitivity better than 0.01 nT and sampling rate of 20 Hz providing sample spacings of 1-2 metres, in a nose mounted stinger configuration with 3-axis real-time compensation.

Radiometric data was collected using a Medusa gamma spectrometer system. It included 21 litres of proprietary self-calibrating NaI(Tl) gamma radiation detection crystals with 512 channel output at 1 Hz sampling rate.

The magnetic and radiometric data had standard industry corrections (lag, attenuation, micro-leveling, cosmic background etc) before being supplied to Mitre Geophysics for further analysis and inversions.

JORC Code, 2012 Edition – Table 1

Section 1 Sampling Techniques and Data

(Criteria in this section apply to all succeeding sections.)

Criteria	JORC Code explanation	Commentary
Sampling techniques	<ul style="list-style-type: none"> Nature and quality of sampling (eg cut channels, random chips, or specific specialised industry standard measurement tools appropriate to the minerals under investigation, such as down hole gamma sondes, or handheld XRF instruments, etc). These examples should not be taken as limiting the broad meaning of sampling. Include reference to measures taken to ensure sample representivity and the appropriate calibration of any measurement tools or systems used. Aspects of the determination of mineralisation that are Material to the Public Report. In cases where ‘industry standard’ work has been done this would be relatively simple (eg ‘reverse circulation drilling was used to obtain 1 m samples from which 3 kg was pulverised to produce a 30 g charge for fire assay’). In other cases more explanation may be required, such as where there is coarse gold that has inherent sampling problems. Unusual commodities or mineralisation types (eg submarine nodules) may warrant disclosure of detailed information. 	<ul style="list-style-type: none"> In March 2026, Colosseum Rare Metals, Inc. contracted Precision GeoSurveys US Inc. to complete an aerial magnetic and radiometric geophysical surveys of the Music Valley claims. The aerial (helicopter) survey consisted of dual magnetic and radiometric survey consisting of 2,172 linear kilometres flown at 30 metres above ground level. Helicopter survey used a Scintrex CS-3 cesium vapor magnetometer and a Medusa gamma-ray spectrometer for gathering magnetic and radiometric data. The helicopter uses WAAS-enabled GPS navigation system and an Opti-Logic laser altimeter. A minimum of four GPS satellites were received at all times during the survey. All individuals completing the magnetic and radiometric survey were trained by Precision GeoSurveys US Inc.
Drilling techniques	<ul style="list-style-type: none"> Drill type (eg core, reverse circulation, open-hole hammer, rotary air blast, auger, Bangka, sonic, etc) and details (eg core diameter, triple or standard tube, depth of diamond tails, face-sampling bit or other type, whether core is oriented and if so, by what method, etc). 	<ul style="list-style-type: none"> No drilling involved with the magnetic or radiometric surveys.

Criteria	JORC Code explanation	Commentary
Drill sample recovery	<ul style="list-style-type: none"> • Method of recording and assessing core and chip sample recoveries and results assessed. • Measures taken to maximise sample recovery and ensure representative nature of the samples. • Whether a relationship exists between sample recovery and grade and whether sample bias may have occurred due to preferential loss/gain of fine/coarse material. 	<ul style="list-style-type: none"> • No drilling involved with the magnetic or radiometric surveys.
Logging	<ul style="list-style-type: none"> • Whether core and chip samples have been geologically and geotechnically logged to a level of detail to support appropriate Mineral Resource estimation, mining studies and metallurgical studies. • Whether logging is qualitative or quantitative in nature. Core (or costean, channel, etc) photography. • The total length and percentage of the relevant intersections logged. 	<ul style="list-style-type: none"> • No drilling involved with the magnetic or radiometric surveys.
Sub-sampling techniques and sample preparation	<ul style="list-style-type: none"> • If core, whether cut or sawn and whether quarter, half or all core taken. • If non-core, whether riffled, tube sampled, rotary split, etc and whether sampled wet or dry. • For all sample types, the nature, quality and appropriateness of the sample preparation technique. • Quality control procedures adopted for all sub-sampling stages to maximise representivity of samples. • Measures taken to ensure that the sampling is representative of the in situ material collected, including for instance results for field duplicate/second-half sampling. • Whether sample sizes are appropriate to the grain size of the material being sampled. 	<ul style="list-style-type: none"> • Magnetic and radiometric survey techniques completed by trained professionals in accordance with industry standard practice.

Criteria	JORC Code explanation	Commentary
Quality of assay data and laboratory tests	<ul style="list-style-type: none"> The nature, quality and appropriateness of the assaying and laboratory procedures used and whether the technique is considered partial or total. For geophysical tools, spectrometers, handheld XRF instruments, etc, the parameters used in determining the analysis including instrument make and model, reading times, calibrations factors applied and their derivation, etc. Nature of quality control procedures adopted (eg standards, blanks, duplicates, external laboratory checks) and whether acceptable levels of accuracy (ie lack of bias) and precision have been established. 	<ul style="list-style-type: none"> Precision GeoSurveys has 19 years of exploration experience working on different projects around the world. They have flown over 800 surveys since 2007. Data interpreted by multiple geophysicist professionals according to industry standard practice and site-specific details.
Verification of sampling and assaying	<ul style="list-style-type: none"> The verification of significant intersections by either independent or alternative company personnel. The use of twinned holes. Documentation of primary data, data entry procedures, data verification, data storage (physical and electronic) protocols. Discuss any adjustment to assay data. 	<ul style="list-style-type: none"> Survey techniques and data adjustments completed by trained professionals according to site specific requirements and best practice.
Location of data points	<ul style="list-style-type: none"> Accuracy and quality of surveys used to locate drill holes (collar and down-hole surveys), trenches, mine workings and other locations used in Mineral Resource estimation. Specification of the grid system used. Quality and adequacy of topographic control. 	<ul style="list-style-type: none"> WAAS-enabled GPS navigation system integrated with pilot steering display and data logger. In good weather conditions, flight line accuracy of +/- 8 m from desired track. Aircraft was de-gaussed prior to commencing survey using proprietary technology. Calibration, lag, heading, and compensation flights. Magnetic FOM was 2.5 nT or better. Opti-Logic laser altimeter (or equivalent) and height-above-ground pilot display and recording. Two or more base station magnetometers with integrated GPS time synchronization for correction of temporal magnetic variations.

For personal use only

Criteria	JORC Code explanation	Commentary
Data spacing and distribution	<ul style="list-style-type: none"> Data spacing for reporting of Exploration Results. Whether the data spacing, and distribution is sufficient to establish the degree of geological and grade continuity appropriate for the Mineral Resource and Ore Reserve estimation procedure(s) and classifications applied. Whether sample compositing has been applied. 	<ul style="list-style-type: none"> Helicopter magnetic and radiometric survey consisted of 2,172 linear kilometres flown at 30m above ground level.
Orientation of data in relation to geological structure	<ul style="list-style-type: none"> Whether the orientation of sampling achieves unbiased sampling of possible structures and the extent to which this is known, considering the deposit type. If the relationship between the drilling orientation and the orientation of key mineralised structures is considered to have introduced a sampling bias, this should be assessed and reported if material. 	<ul style="list-style-type: none"> Survey lines laid out by geophysics professionals according to industry standard practice and site specific details.
Sample security	<ul style="list-style-type: none"> The measures taken to ensure sample security. 	<ul style="list-style-type: none"> Not applicable
Audits or reviews	<ul style="list-style-type: none"> The results of any audits or reviews of sampling techniques and data. 	<ul style="list-style-type: none"> Data is being audited and interpreted by Nick Direen with Mitre Geophysics Pty Ltd in Tasmania, Australia. Nick is a multi-award winning geoscientist with a BSc. (Hons) & PhD in both Geology and Geophysics and a member of the Australian Society of Exploration Geophysicists, the Society of Exploration Geophysicists, the American Association of Petroleum Geologists, and the Geological Society of Australia; and a Fellow of the Australian Institute of Geoscientists and the Society of Economic Geologists. Data interpretations will be completed by Nick Direen and reviewed by Greg Hall, Chartered Professional of the Australasian Institute of Mining and Metallurgy (CP-IMM).

For personal use only

Section 2 Reporting of Exploration Results

(Criteria listed in the preceding section also apply to this section.)

Criteria	JORC Code explanation	Commentary
Mineral tenement and land tenure status	<ul style="list-style-type: none"> Type, reference name/number, location and ownership including agreements or material issues with third parties such as joint ventures, partnerships, overriding royalties, native title interests, historical sites, wilderness or national park and environmental settings. The security of the tenure held at the time of reporting along with any known impediments to obtaining a licence to operate in the area. 	<ul style="list-style-type: none"> The Music Valley Project is located in portions of T1N R9E-R11E, T1S R9E-R11E, and T2S R9E-R11E, SB&M. All tenements are 100% owned by Dateline Resources Limited or a wholly owned subsidiary.
Exploration done by other parties	<ul style="list-style-type: none"> Acknowledgment and appraisal of exploration by other parties. 	<ul style="list-style-type: none"> Heavy Rare Earth mineralisation was first reported by the USGS in 1954. There has been little to no modern exploration across the claims area. For the acquired (Fermi) claims, no substantive work was undertaken by the previous owner.
Geology	<ul style="list-style-type: none"> Deposit type, geological setting and style of mineralisation. 	<ul style="list-style-type: none"> The Music Valley Project is located within the eastern Transverse Ranges of San Bernardino and Riverside Counties, California, near the structural transition into the Mojave Desert province. The region is underlain by a complex assemblage of Proterozoic to Mesozoic crystalline basement rocks that have been intruded by Jurassic and Cretaceous granitic plutons associated with the Cordilleran magmatic arc. Regional mapping by the United States Geological Survey highlights a structurally deformed terrane characterised by northwest trending faults and shear zones. These structures reflect multiple tectonic events and are interpreted to provide potential pathways for fluid flow and element mobilisation. A key basement unit within the Project area is the Pinto Gneiss, interpreted as an Early Proterozoic high grade metamorphic complex. The Pinto Gneiss comprises banded biotite quartz feldspar gneiss with

For personal use only

Criteria	JORC Code explanation	Commentary
		<p>local amphibolite and migmatitic phases and exhibits strong foliation and compositional layering consistent with polyphase deformation and metamorphism. The unit has been intruded by younger granitic bodies and locally cut by pegmatites and quartz veins. This intrusive and structural overprint is significant, as it provides a geological environment conducive to the concentration of incompatible elements during partial melting and late stage magmatic and hydrothermal processes.</p> <ul style="list-style-type: none"> From a rare earth element perspective, the Pinto Gneiss is considered prospective due to the potential presence of accessory HREE bearing minerals, including monazite, allanite and xenotime, within felsic components of the metamorphic sequence. High grade metamorphism and partial melting events may have facilitated redistribution and local enrichment of rare earth elements, particularly along shear zones, pegmatitic segregations and intrusive contacts. The combination of an ancient, repeatedly reworked basement complex, proximity to granitic intrusions and well-developed structural pathways provides a favourable geological setting for further rare earth exploration at Music Valley.
<p><i>Drill hole Information</i></p>	<ul style="list-style-type: none"> <i>A summary of all information material to the understanding of the exploration results including a tabulation of the following information for all Material drill holes:</i> <ul style="list-style-type: none"> <i>easting and northing of the drill hole collar</i> <i>elevation or RL (Reduced Level – elevation above sea level in metres) of the drill hole collar</i> <i>dip and azimuth of the hole</i> <i>down hole length and interception depth</i> <i>hole length.</i> <i>If the exclusion of this information is justified on the basis that the information is not Material, and this exclusion does not detract from</i> 	<ul style="list-style-type: none"> No drill hole information involved with the magnetic or radiometric surveys.

Criteria	JORC Code explanation	Commentary
	<p><i>the understanding of the report, the Competent Person should clearly explain why this is the case.</i></p>	
Data aggregation methods	<ul style="list-style-type: none"> <i>In reporting Exploration Results, weighting averaging techniques, maximum and/or minimum grade truncations (eg cutting of high grades) and cut-off grades are usually Material and should be stated.</i> <i>Where aggregate intercepts incorporate short lengths of high-grade results and longer lengths of low grade results, the procedure used for such aggregation should be stated and some typical examples of such aggregations should be shown in detail.</i> <i>The assumptions used for any reporting of metal equivalent values should be clearly stated.</i> 	<ul style="list-style-type: none"> No drill hole intercepts or weighting involved with the magnetic or radiometric surveys.
Relationship between mineralisation widths and intercept lengths	<ul style="list-style-type: none"> <i>These relationships are particularly important in the reporting of Exploration Results.</i> <i>If the geometry of the mineralisation with respect to the drill hole angle is known, its nature should be reported.</i> <i>If it is not known and only the down hole lengths are reported, there should be a clear statement to this effect (eg 'down hole length, true width not known').</i> 	<ul style="list-style-type: none"> Magnetic and radiometric survey lines flown in 060°/ 240° line orientation (UTM grid) as specified by Mitre Geophysics according to industry standard practice and site specific details for Music Valley Project.
Diagrams	<ul style="list-style-type: none"> <i>Appropriate maps and sections (with scales) and tabulations of intercepts should be included for any significant discovery being reported These should include, but not be limited to a plan view of drill hole collar locations and appropriate sectional views.</i> 	<ul style="list-style-type: none"> Supporting figures have been included within the body of this release.
Balanced reporting	<ul style="list-style-type: none"> <i>Where comprehensive reporting of all Exploration Results is not practicable, representative reporting of both low and high grades and/or widths should be practiced avoiding misleading reporting of Exploration Results.</i> 	<ul style="list-style-type: none"> No grades reported within this release.
Other substantive exploration	<ul style="list-style-type: none"> <i>Other exploration data, if meaningful and material, should be reported including (but not limited to): geological observations; geophysical survey results;</i> 	<ul style="list-style-type: none"> Reconnaissance mapping was undertaken using HREE specialists. Follow up mapping is underway.

Criteria	JORC Code explanation	Commentary
<i>data</i>	<i>geochemical survey results; bulk samples – size and method of treatment; metallurgical test results; bulk density, groundwater, geotechnical and rock characteristics; potential deleterious or contaminating substances.</i>	
<i>Further work</i>	<ul style="list-style-type: none"> <i>The nature and scale of planned further work (eg tests for lateral extensions or depth extensions or large-scale step-out drilling).</i> <i>Diagrams clearly highlighting the areas of possible extensions, including the main geological interpretations and future drilling areas, provided this information is not commercially sensitive.</i> 	<ul style="list-style-type: none"> Dateline intends to use a ‘stacked evidence’ approach to exploration, with mapping, geochemistry and geophysics to be used to develop drill targets.

For personal use only