

ASX ANNOUNCEMENT | 18 June 2026

# ASKARI EXPANDS UIS PIPELINE WITH 7 NEW PEGMATITE TARGETS AHEAD OF RC DRILLING

## HIGHLIGHTS

- Uis is emerging as a **polymetallic pegmatite project offering exposure to tin, tantalum, lithium, rubidium and caesium**
- In-house hyperspectral analysis has defined **7 new high-priority pegmatite targets**, materially expanding Askari's pipeline ahead of the next phase of drilling
- Standout large-scale targets include **K10 with an interpreted strike length of 3.1km, GP at 2.4km and Tawny at 2.2km**
- Mapping and rock-chip sampling are **underway** to rapidly convert the new target inventory into trench-ready prospects
- On-site LIBS and pellet press commissioning is expected to **accelerate assay turnaround and exploration decision-making**
- Regional soil and stream sediment geochemical programs have been designed to test the broader Corridor of Interest and identify additional concealed pegmatite targets
- **Phase 1 trenching on EPL 8535 and Phase 2 trenching on EPL 7345** are planned to expand the broader drill target pipeline
- **RC drilling to commence next quarter on the DP, OP, PS and K9 pegmatite targets at EPL 7345**

Askari Metals Limited (**ASX: AS2**) ("Askari Metals" or "Company") is pleased to report that its in-house hyperspectral study has identified seven new high-priority pegmatite targets at the Uis Project in Namibia, materially expanding the project's target pipeline ahead of the next phase of RC drilling. The new targets further reinforce Uis as an emerging polymetallic opportunity with exposure to tin, tantalum, lithium, rubidium and caesium.

Against a backdrop of tightening tin supply and increasing strategic focus on critical mineral supply chains, Askari believes Uis is well positioned to offer leverage to commodities linked to electrification, advanced manufacturing and energy security. With field programmes underway, faster in-country assay turnaround expected through on-site LIBS and pellet press commissioning, trenching planned across new targets, and RC drilling to commence next quarter on the DP, OP, PS and K9 pegmatite targets at EPL 7345, the Company sees a strong pipeline of near-term newsflow at Uis.

## Commenting on the significance of the new polymetallic targets identified, Executive Director, Mr. Gino D'Anna, stated:

*"This study marks another important step in unlocking the scale and polymetallic potential of Uis. Our in-house hyperspectral work has now delivered seven new high-priority pegmatite targets, materially expanding the project's pipeline ahead of the next phase of RC drilling.*

*"Uis is continuing to emerge as a highly strategic polymetallic project with exposure to tin, tantalum, lithium, rubidium and caesium, at a time when supply dynamics and growing demand for critical minerals are sharpening investor focus on quality exploration stories.*

*"Targets including K10, GP and Tawny stand out at this stage, and with mapping and rock-chip sampling already underway, we are moving quickly to convert this growing target inventory into trench-ready prospects while also testing the broader Corridor of Interest for additional concealed pegmatites.*

*"Importantly, the commissioning of our on-site pellet press and LIBS machine is expected to materially improve assay turnaround times and accelerate exploration decision-making as multiple workstreams advance in parallel.*

*"With field programs active on the ground, RC drilling set to commence next quarter on the DP, OP, PS and K9 pegmatite targets, and further trenching planned to expand the broader pipeline, we see a strong stack of near-term catalysts at Uis that we believe can continue to build momentum and unlock value."*

## Innovative Remote Sensing Study Enhances Geological and Regolith Mapping

Askari Metals has successfully completed an advanced in-house remote sensing hyperspectral study on the Uis project, utilizing re-processed high-resolution satellite imagery and a newly optimized hyperspectral technique. By integrating Sentinel-2 multispectral data with Maxar WorldView-3 hyperspectral data, the study has produced high-resolution multispectral, hyperspectral and ortho-imagery maps, significantly enhancing the precision of geological and regolith mapping.

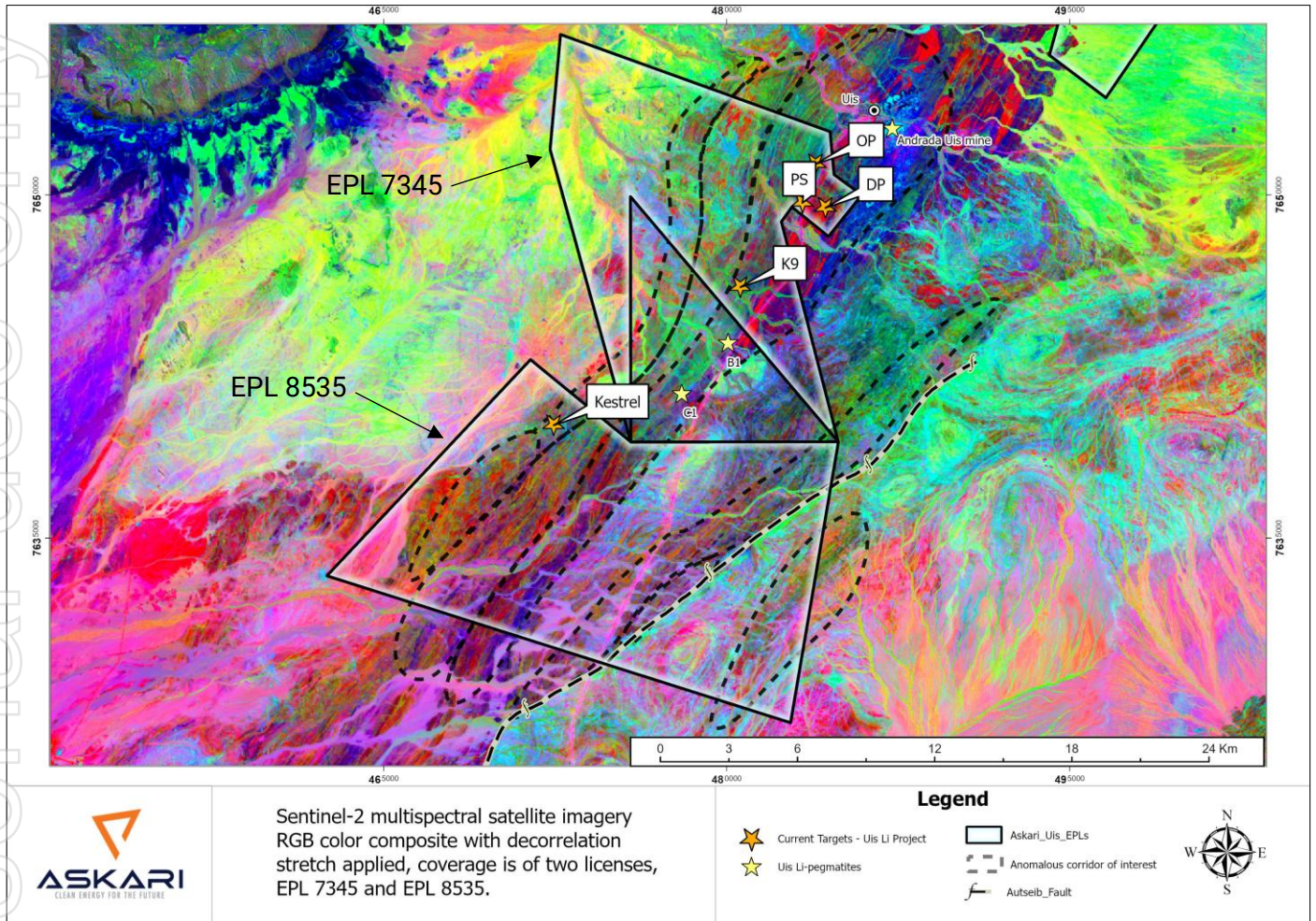
Sentinel-2 multispectral satellite imagery is particularly effective in the visible and shortwave infrared (SWIR) bands for distinguishing rock types, geological units, and surface mineralogy. This capability supports detailed and cost-effective geological mapping, soil analysis, geomorphological studies, and mineral exploration.

Maxar WorldView-3 is a commercial Earth observation satellite that provides high resolution spatial and a broad spectral range, making it a valuable tool for geological and regolith mapping. Its high spatial resolution and diverse spectral capabilities assist in identifying geological and mineralogical features. In regolith mapping, WorldView-3's imagery distinguishes various soil and sediment types, aiding in the detection of geomorphological features and providing insights into surface processes and landscape dynamics.

**Figures 1-3** illustrate various remote sensing methodologies employed to aid in the identification of potential targets.

The initial technique encompasses the generation of false-colour RGB composites. This technique allows the Company to identify geological structures and delineate pegmatites from their host pelitic schist and granitic bodies (see **Figure 1**).



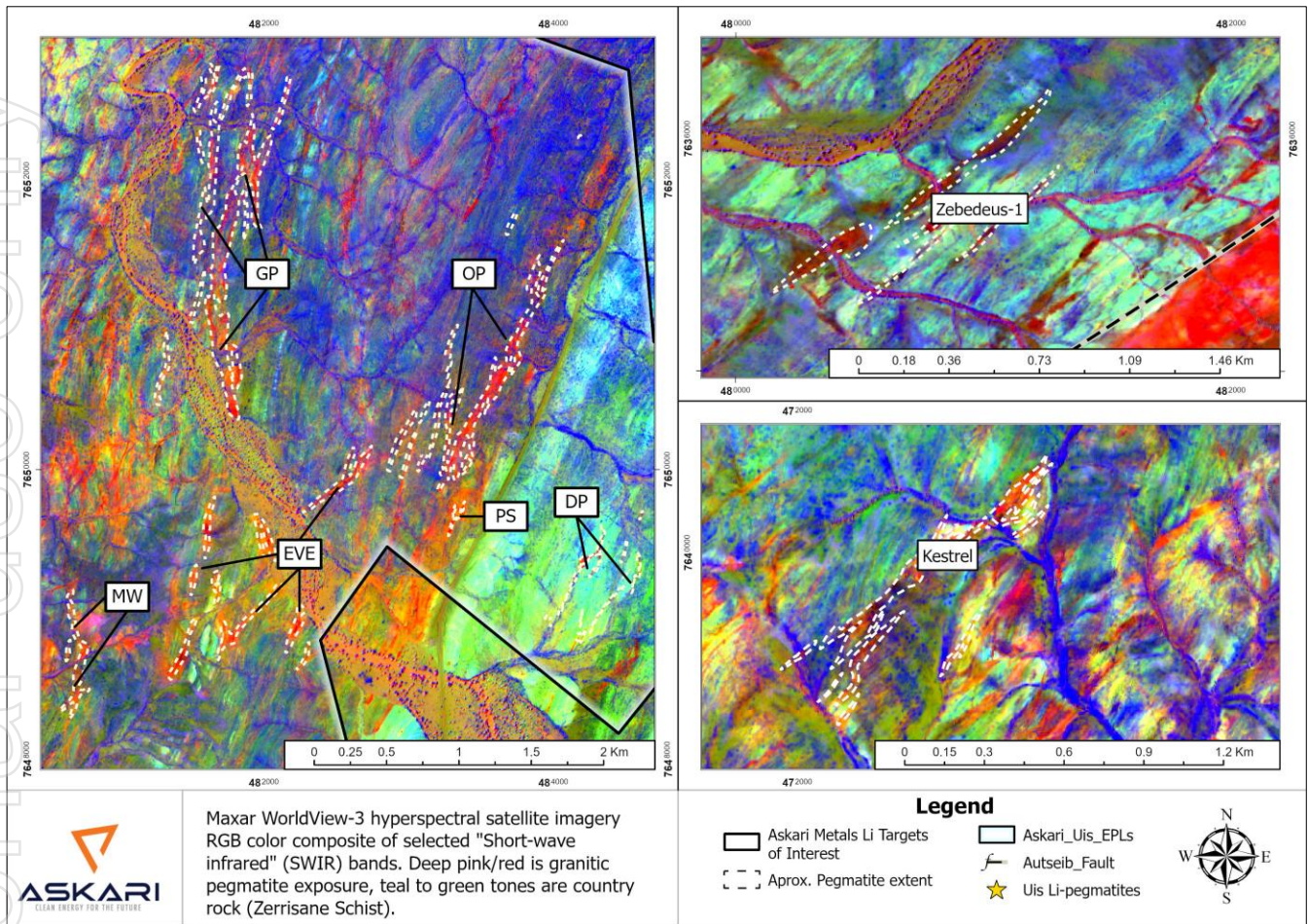


**Figure 1:** Sentinel-2 multispectral satellite imagery RGB colour composite of selected SWIR and VNIR bands with an applied decorrelation stretch to enhance colour contrast between lithological and regolith types on the ground. The high priority and prospective corridor of interest is shown using the black dashed lines, refer to Figure 6 for further detail.

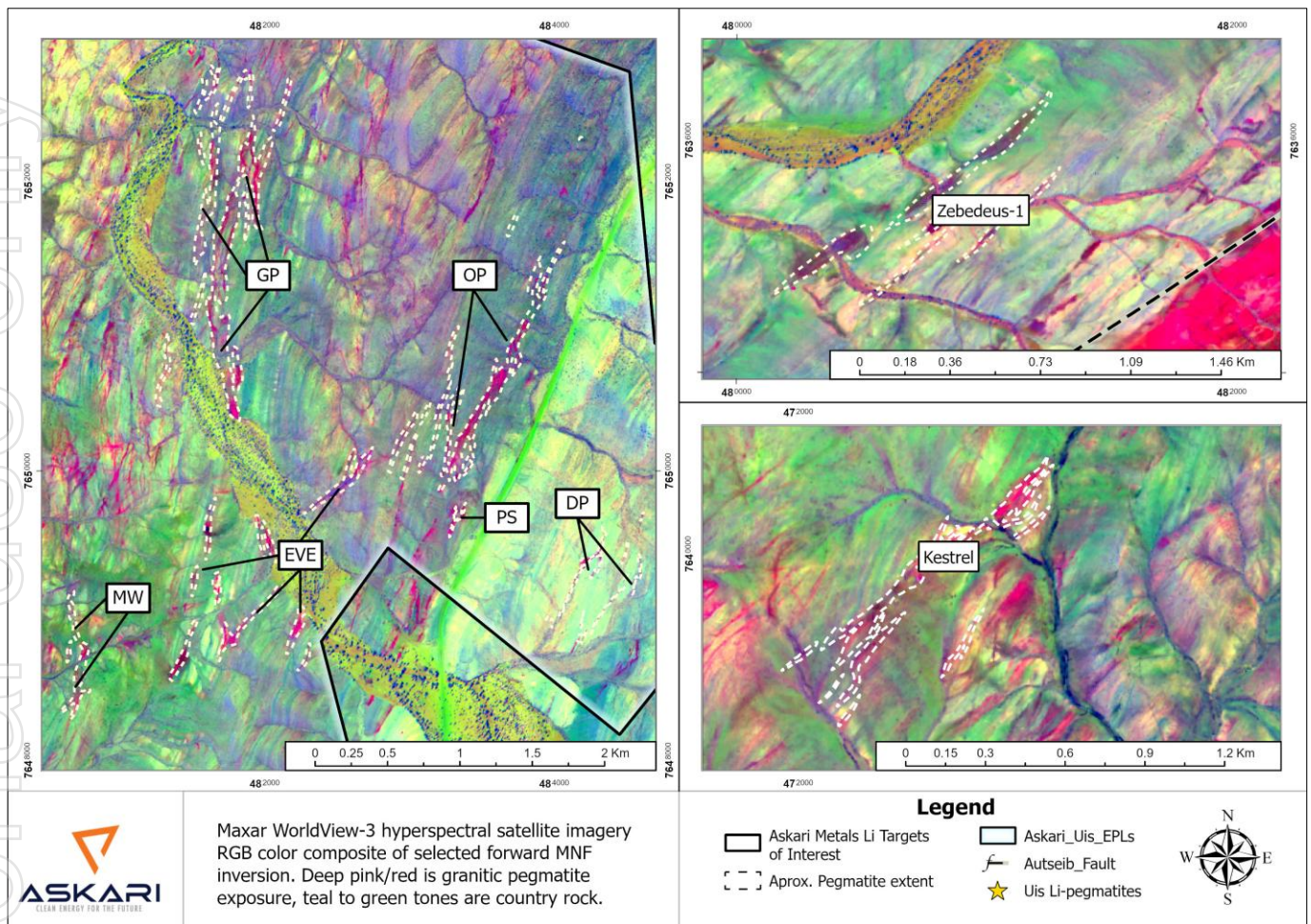
The second approach involves the application of a decorrelation stretch to the RGB composite satellite image. This technique heightens the colour contrast, thereby aiding in the differentiation between rock types, vegetation categories, and urbanized regions.

Additionally, other techniques like Minimum Noise Fraction (MNF) and Principal Component Analysis (PCA) inversions are often integrated into remote sensing workflows to further enhance image interpretation. MNF is used to segregate noise from the signal in hyperspectral data, improving the quality of the subsequent analysis.

PCA reduces the dimensionality of the data by transforming it into a set of uncorrelated principal components, highlighting the most significant features and variations in the data. Both MNF and PCA help in isolating meaningful spectral information and reducing noise, thereby enhancing the overall interpretability of the images.



**Figure 2:** Maxar Worldview-3 hyperspectral satellite imagery RGB colour composite of selected Shortwave Infrared (SWIR) bands. Deep pink represents granitic pegmatite exposure while blue/green-teal represents host rock schist. Coverage is of current targets and new areas of interest.

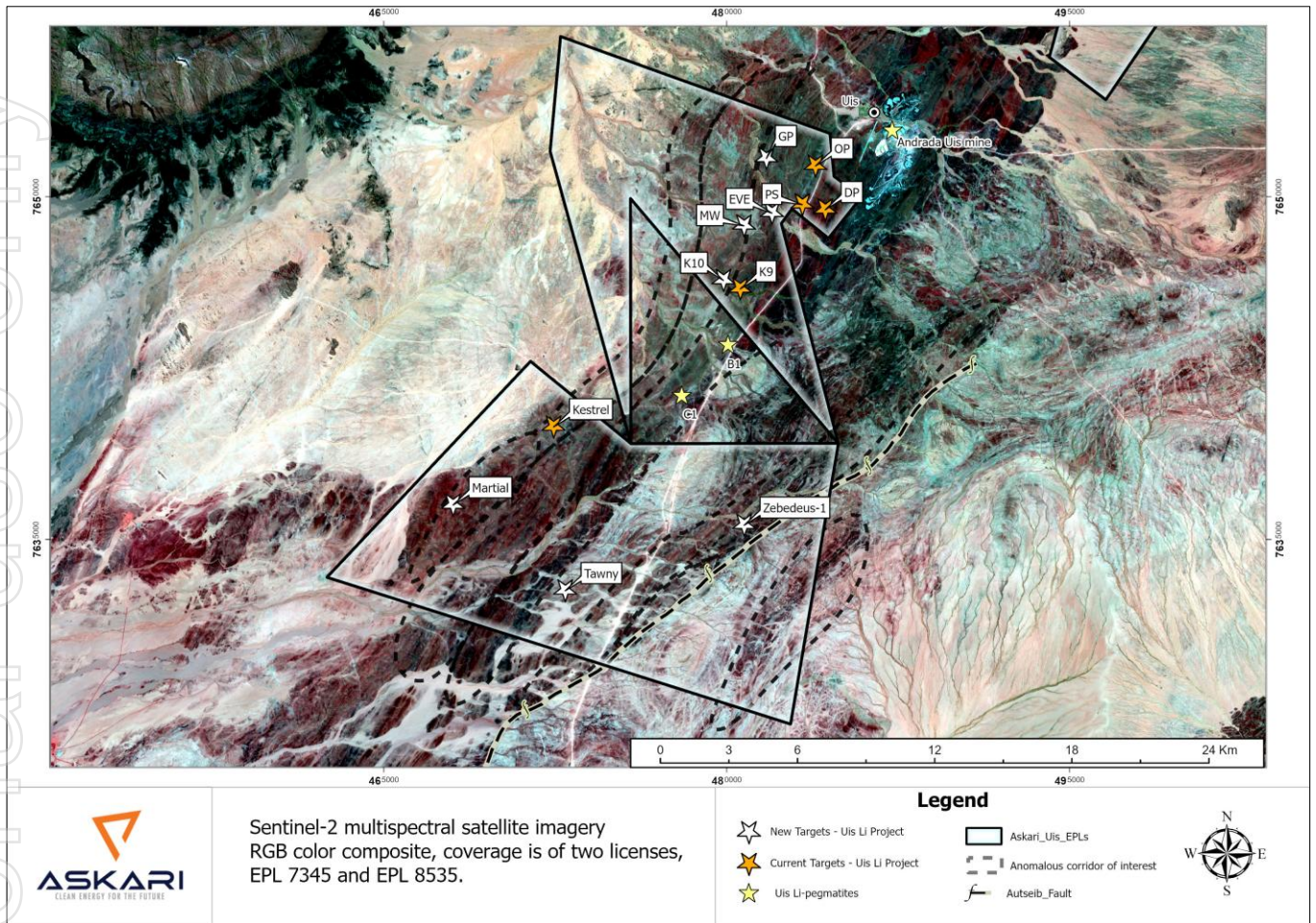


**Figure 3:** Maxar Worldview-3 hyperspectral satellite imagery RGB colour composite of selected Minimum Noise Fraction (MNF) product bands. Deep pink/red represents granitic pegmatite exposure while teal – blue/green represents host rock schist. Coverage is of current targets and new areas of interest.

## EPL 7345 and EPL 8535 New Targets

Askari’s optimized in-house hyperspectral study has identified and delivered a pipeline of seven new prospective pegmatite targets at Uis. These comprise four new targets on EPL 7345 which include Eve, GP, MW and K10 as well as three new targets on EPL 8535 which are Tawny, Martial and Zebedeus-1. These targets all fall within the “Corridor of Interest” previously delineated and which defines a zone prospective for fertile, LCT-type, mineralized pegmatites.

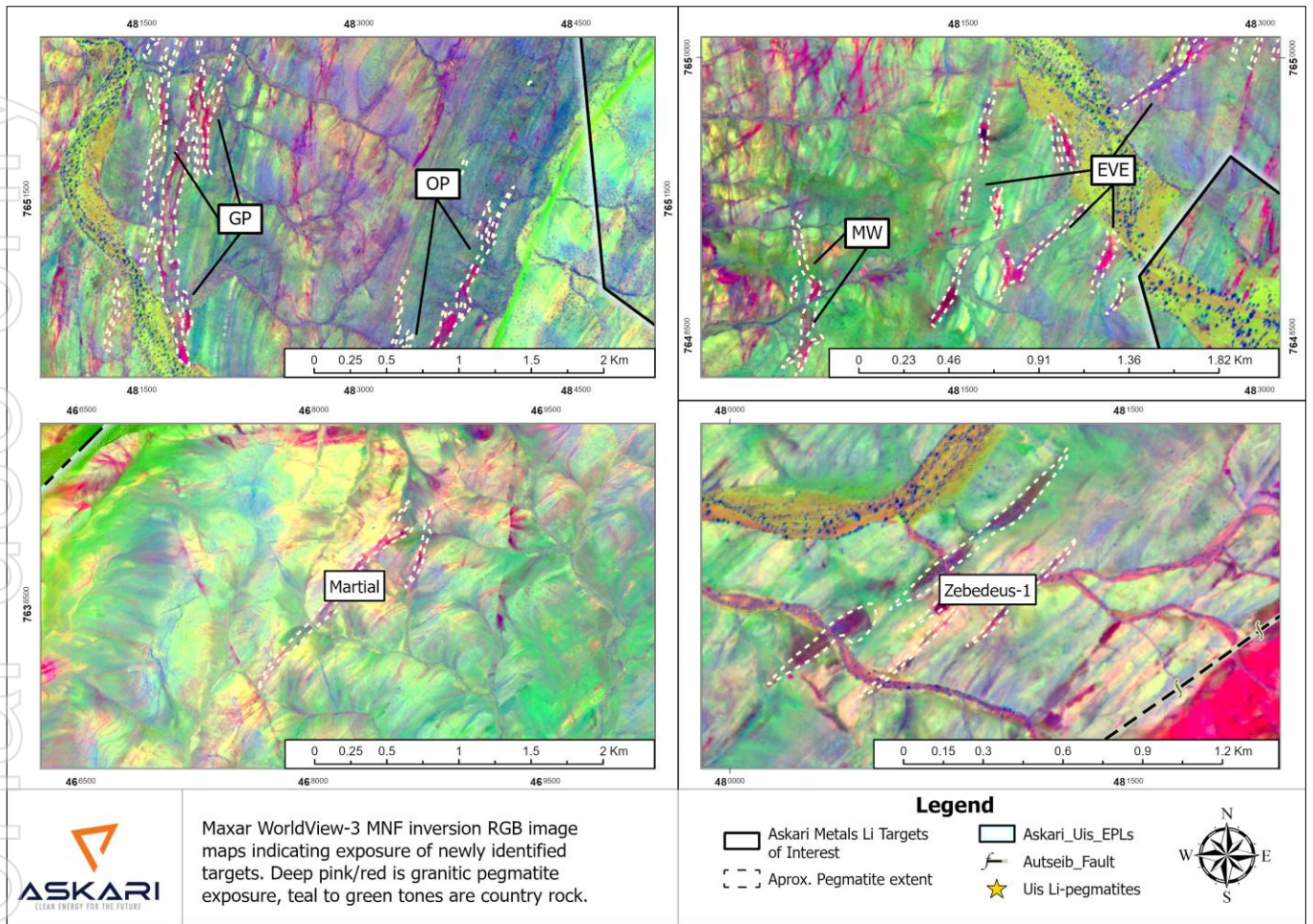
These new targets are shown in **Figures 4 and 5**, and **Table 1** lists their estimated prospective strike lengths.



**Figure 4:** The Uis Project showing the newly identified pegmatite targets along with the current targets with the Sentinel-2 multispectral satellite imagery as a backdrop.

**Table 1:** List of Askari's new prospective pegmatite targets generated by the hyperspectral study.

Target	EPL	Estimated Total Strike Length (km)
EVE	EPL 7345	1.7
GP	EPL 7345	2.4
MW	EPL 7345	0.9
K10	EPL 7345	3.1
Zebedeus-1	EPL 8535	1.4
Tawny	EPL 8535	2.2
Martial	EPL 8535	1.7

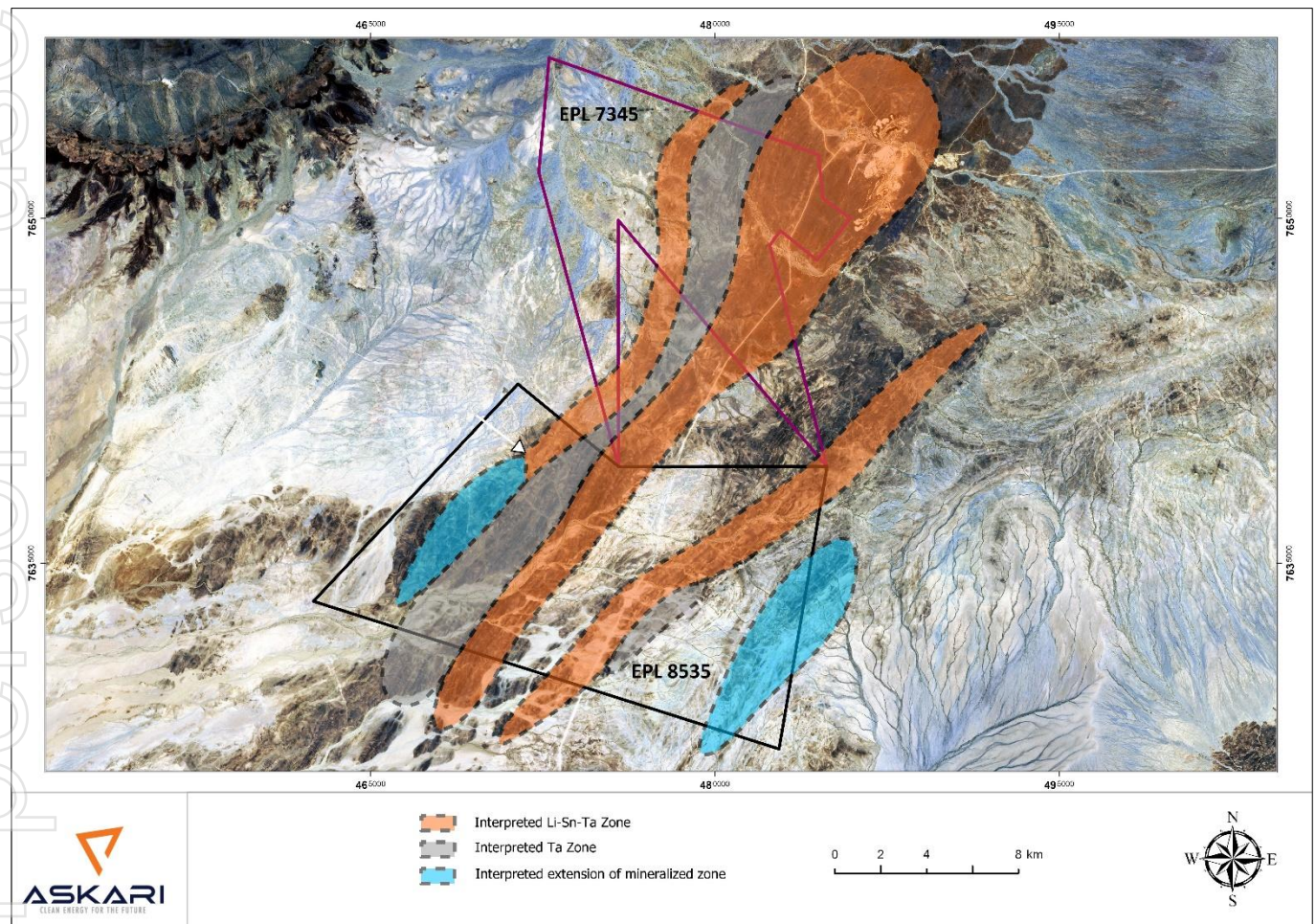


**Figure 5:** Selected newly identified pegmatite targets on a MNF RGB colour composite backdrop with deep pink/red representing granitic pegmatite exposure while teal – blue/green represents host rock schist. Top Left – GP and OP (previously reported and trenced); Top Right – EVE and MW targets; Bottom Left – Martial; and Bottom Right – Zebedeus-1.

## High Priority Prospective “Corridor of Interest”

The Company has defined a high-priority focus corridor of interest using the regional magnetic data along with chemical data (K/Rb ratios), and which was found to be approximately 15km long and approximately 5km wide, striking in a north east – south west direction (*refer to ASX announcement dated 21 September 2023*).

Additionally, the recently received data has allowed the Company to further identify zones prospective for Li-Sn-Ta mineralization, and areas prospective for Ta mineralization, as well as interpreted extensions of zones of mineralization warranting further exploration in upcoming programs.



**Figure 6:** High priority prospective “corridor of interest” with re-defined Li-Sn-Ta prospective zones, Ta prospective zones and areas of potential mineralization extensions.

## Pellet Press and LIBS Machines Commissioned on Site

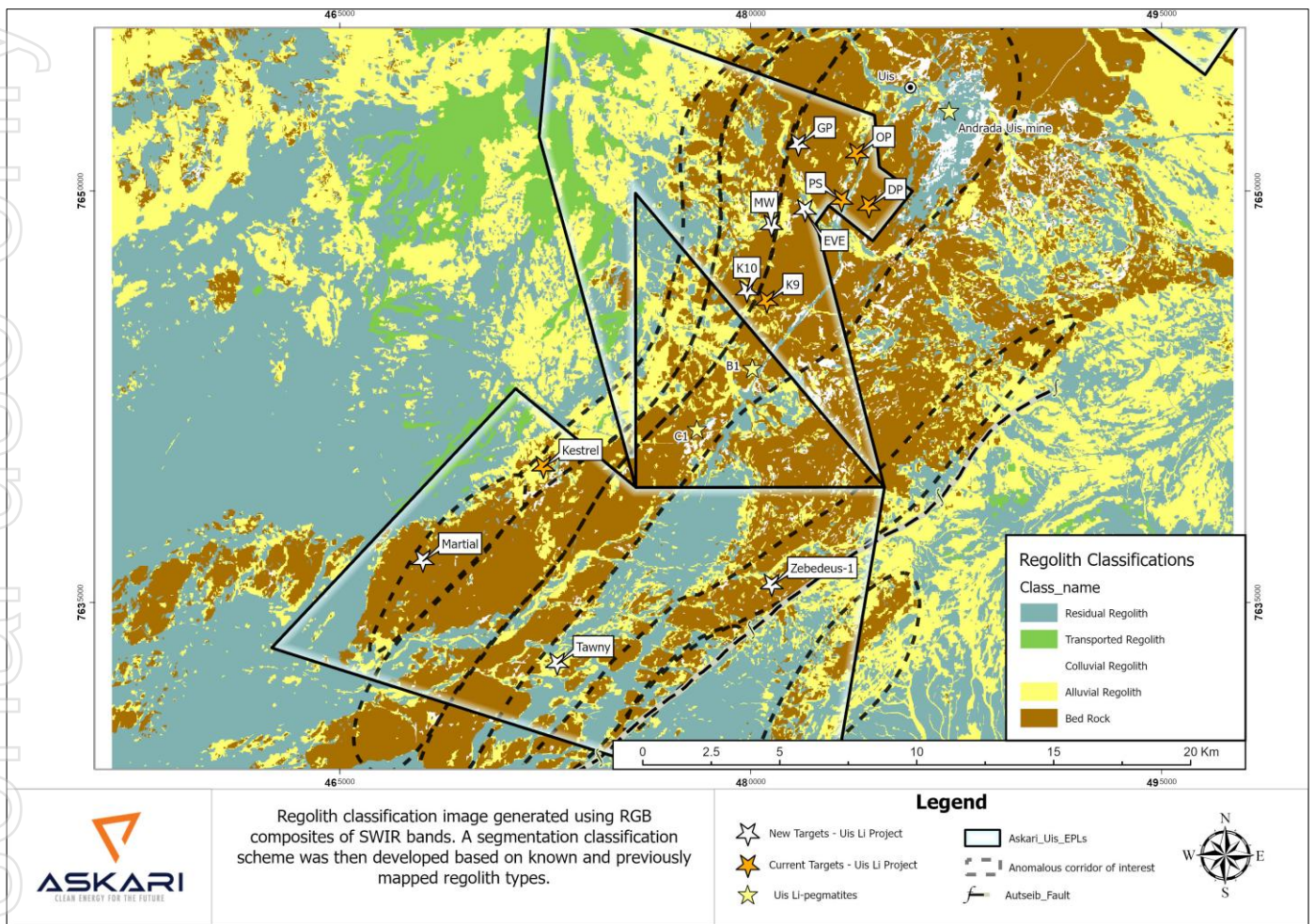
The Company's own pellet press and LIBS (Laser-Induced Breakdown Spectroscopy) machines are on site and have been commissioned. All exploration samples in future will undergo sample preparation and analysis on site in Uis. This technique will ensure a much quicker assay turnaround time and faster decision making going forward at Uis.



*Figure 7: Handheld LIBS (Laser-Induced Breakdown Spectroscopy) instrument used in the field. Here, the team assess the potential of our pegmatite targets using the LIBS to analyse for light elements (Li, Be, Mg and B).*

## Regolith Mapping Study

Askari has recently completed a regolith domain mapping study for the Uis Project. This involved ground truthing specific regolith domains which had been mapped using the high-resolution hyperspectral data. This study was used to help design planned regional soil and stream sediment geochemical sampling survey programs (see below).



**Figure 8:** The regolith image was generated using RGB composites of Short-Wave Infrared (SWIR) bands. A segmentation classification scheme was then developed based on known and previously mapped regolith types.

## Soil and Stream Sediment Geochemical Sampling Programs

Regional, project wide soil and stream sediment geochemical sampling campaigns have been designed for the Uis project. These will be primarily focused on the “Corridor of Interest” and will begin following completion of the detailed prospect mapping and rock chip sampling programs. All samples generated in this campaign will be analysed on site in Uis with Askari’s in-house analytical equipment.

## Design of Phase 1 EPL 8345 and Phase 2 EPL 7345 Trenching Programs

Following completion of the regional soil and stream sediment sampling programs, as well as the prospect mapping and rock chip sampling campaigns, all the assay and geochemical data will be analysed and assessed. This data will feed into the design of a Phase 1 EPL 8535 trenching campaign and a Phase 2 EPL 7345 trenching campaign.

## Future Work

Askari has multiple concurrent workstreams underway across the anomalous “Corridor of Interest” at Uis, with each stage designed to progressively refine priority targets, feed into trench design across EPL 8535 and EPL 7345 and build toward a planned initial drill campaign later this year. The immediate focus is on advancing current field programs, followed by regional geochemical testing and then trenching across the highest-priority targets.

- Detailed mapping and rock-chip sampling of priority target areas (underway)
- Regional stream sediment geochemical sampling across the broader Corridor of Interest
- Regional soil geochemical sampling to refine additional concealed target areas
- Assessment of field, assay and geochemical datasets to prioritise trench-ready targets
- Phase 1 trenching on EPL 8535 and Phase 2 trenching on EPL 7345
- Integration of trenching results to support an initial drill campaign later this year

**This announcement is authorised for release by the Board of Askari Metals Limited.**

**FOR FURTHER INFORMATION PLEASE CONTACT**

## INVESTORS

**Gino D’Anna**  
EXECUTIVE DIRECTOR

**E.** [gino@askarimetals.com](mailto:gino@askarimetals.com)



## ABOUT ASKARI METALS

Askari Metals is a focused African exploration company with a portfolio of highly prospective gold and critical minerals projects in Ethiopia and Namibia. The Company's flagship Nejo Project in Ethiopia is an advanced-stage brownfields gold and copper opportunity located on the Arabian-Nubian Shield, with a district-scale landholding of approximately 1,200km<sup>2</sup> surrounding the 1.7Moz Tulu Kapi Gold Mine and along strike from the 3.4Moz Kurmuk Mine.

In Namibia, Askari is advancing its 100%-owned Uis Project, a highly prospective polymetallic critical minerals project located within the Cape Cross-Uis Pegmatite Belt. The project sits close to Andrada Mining's operating Uis Tin Mine and is strategically positioned with access to the Walvis Bay Deepwater Port via sealed road infrastructure.

Askari continues to progress exploration across both core assets, with a focus on unlocking value through systematic drilling, target generation and resource growth opportunities.

For more information please visit: [www.askarimetals.com](http://www.askarimetals.com)

## CAUTION REGARDING FORWARD-LOOKING INFORMATION

This document contains forward-looking statements concerning Askari Metals Limited. Forward-looking statements are not statements of historical fact and actual events and results may differ materially from those described in the forward-looking statements as a result of a variety of risks, uncertainties and other factors. Forward-looking statements are inherently subject to business, economic, competitive, political and social uncertainties and contingencies. Many factors could cause the Company's actual results to differ materially from those expressed or implied in any forward-looking information provided by the Company, or on behalf of, the Company. Such factors include, among other things, risks relating to additional funding requirements, metal prices, exploration, development and operating risks, competition, production risks, regulatory restrictions, including environmental regulation and liability and potential title disputes.

Forward looking statements in this document are based on the Company's beliefs, opinions and estimates of Askari Metals Limited as of the dates the forward-looking statements are made, and no obligation is assumed to update forward looking statements if these beliefs, opinions and estimates should change or to reflect other future developments.

## CAUTIONARY STATEMENT

Visual estimates of mineral abundance should never be considered a proxy or substitute for laboratory analyses where concentrations or grades are the factor of principal economic interest. Visual estimates also potentially provide no information regarding impurities or deleterious physical properties relevant to valuations.

## COMPETENT PERSONS STATEMENT

The information in this announcement that relates to Exploration Results concerning additional pegmatite targets at the Uis Project in Namibia is based on and fairly represents information compiled by Mr Lachlan Reynolds, a Competent Person who is a member of both the Australian Institute of Mining and Metallurgy and the Australasian Institute of Geoscientists.

Mr. Reynolds is the principal of Sianora Pty Ltd and is employed as a technical consultant by Askari Metals Limited. Mr Reynolds has sufficient experience that is relevant to the style of mineralisation and types of deposits under consideration and to the activity being undertaken to qualify as a Competent Person as defined in the 2012 Edition of the Joint Ore Reserves Committee (JORC) Australasian Code for Reporting of Exploration Results, Mineral Resources and Ore Reserves. Mr. Reynolds consents to the inclusion in the report of the matters based on his information in the form and context in which it appears.

For further information and details on sources of previous exploration information completed by Askari Metals Limited and released to ASX in compliance with JORC (2012) guidelines, refer to ASX announcements as noted below covering the various dates and announcements.

The information in this announcement that relates to previous Exploration Results and potential for the Uis Project are based on information compiled by Clifford Fitzhenry, a Competent Person who is a Registered Professional Natural Scientist with the South African Council for Natural Scientific Professions (SACNASP) as well as a Member of the Geological Society of South Africa (GSSA) and a Member of the Society of Economic Geologists (SEG). Mr. Fitzhenry was previously a Technical Consultant for Askari Metals Limited, who has sufficient experience that is relevant to the style of mineralisation and type of deposit under consideration and to the activity being undertaken to qualify as a Competent Person as defined in the 2012 edition of the Australasian Code for Reporting of Exploration Results, Mineral Resources and Ore Reserves.

Appendix 1 – JORC Code, 2012 Edition, Table 1 report

Section 1 Sampling Techniques and Data (Criteria in this section applies to all succeeding sections)

Criteria	JORC Code explanation	Commentary
Sampling techniques	<ul style="list-style-type: none"> <li>Nature and quality of sampling (e.g. cut channels, random chips, or specific specialised industry standard measurement tools appropriate to the minerals under investigation, such as down hole gamma sondes, or handheld XRF instruments, etc). These examples should not be taken as limiting the broad meaning of sampling.</li> <li>Include reference to measures taken to ensure sample representivity and the appropriate calibration of any measurement tools or systems used.</li> <li>Aspects of the determination of mineralisation that are Material to the Public Report.</li> </ul>	<p><b>High Resolution Data</b></p> <ul style="list-style-type: none"> <li>High resolution WorldView-3 multi-spectral satellite imagery over the Uis project area was obtained from Woolpert, Inc.</li> <li>The data was obtained from WorldView-3 (WV-3) imaging and environment-monitoring satellite located at an altitude of 617km in a sun-synchronous orbit.</li> <li>The data package consists of 16 bands ranging from visible light through near-infrared (8x VNIR bands at - 1.24m resolution) to 8 short-wave infra-red bands (SWIR – 3.7m resolution). A panchromatic sensor with a 30cm resolution is used to pan-sharpen the visible and NIR bands.</li> <li>In house processing was conducted on the bands to produce high resolution multispectral (false colour RGB band composites) and ortho-images (RGB true colour composites).</li> <li>The SWIR bands from the WV-3 scenes were primarily selected for band math and RGB composite image creation. Decorrelation stretch and Saturation stretch image transformations were applied on SWIR RGB image composites.</li> <li>The Hyperspectral program use Sentinel-2 satellite visible/near infrared (VNIR) and shortwave infrared (SWIR) imagery for interpretation across the Uis Project. The results identified a number of polymetallic pegmatite exploration targets within the Corridor of Interest.</li> </ul> <p><b>Regolith mapping</b></p> <ul style="list-style-type: none"> <li>The SWIR bands from the WV-3 scenes were primarily selected for band math and RGB composite image creation to delineate between different regolith types identified in the field as well as surface and sub-surface pegmatite and alteration exposure.</li> <li>More details are contained in the body of the document.</li> </ul>
Drilling techniques	<ul style="list-style-type: none"> <li>Drill type (e.g. core, reverse circulation, open-hole hammer, rotary air blast, auger, bangka, sonic, etc) and details.</li> </ul>	<ul style="list-style-type: none"> <li>Not applicable, no drilling completed.</li> </ul>
Drill sample recovery	<ul style="list-style-type: none"> <li>Method of recording and assessing core and chip sample recoveries and results assessed.</li> </ul>	<ul style="list-style-type: none"> <li>Not applicable, no samples recovered.</li> </ul>
Logging	<ul style="list-style-type: none"> <li>Whether core and chip samples have been geologically and geotechnically logged to a level of detail to support appropriate Mineral Resource Estimation, mining studies and metallurgical studies.</li> </ul>	<ul style="list-style-type: none"> <li>Not applicable, no logging completed.</li> </ul>
Sub-sampling techniques and sample preparation	<ul style="list-style-type: none"> <li>For all sample types, the nature, quality and appropriateness of the sample preparation technique.</li> </ul>	<ul style="list-style-type: none"> <li>Not applicable, no sub-sampling or sample preparation undertaken.</li> </ul>



Criteria	JORC Code explanation	Commentary
Quality of assay data and laboratory tests	<ul style="list-style-type: none"> <li>The nature, quality and appropriateness of the assaying and laboratory procedures used and whether the technique is considered partial or total.</li> <li>Nature of quality control procedures adopted (eg standards, blanks, duplicates, external laboratory checks) and whether acceptable levels of accuracy (ie lack of bias) and precision have been established.</li> </ul>	<ul style="list-style-type: none"> <li>Not applicable, no assay data reported.</li> </ul>
Verification of sampling and assaying	<ul style="list-style-type: none"> <li>The verification of significant intersections by either independent or alternative company personnel.</li> <li>Documentation of primary data, data entry procedures, data verification, data storage (physical and electronic) protocols.</li> <li>Discuss any adjustment to assay data.</li> </ul>	<ul style="list-style-type: none"> <li>Not applicable, no sampling or assay data reported.</li> </ul>
Location of data points	<ul style="list-style-type: none"> <li>Accuracy and quality of surveys used to locate drill holes (collar and down-hole surveys), trenches, mine workings and other locations used in Mineral Resource estimation.</li> </ul>	<ul style="list-style-type: none"> <li>Not applicable, no surveys completed.</li> <li>All coordinates reported in this document are based on the WGS1984 datum, projection UTM Zone 33S.</li> </ul>
Data spacing and distribution	<ul style="list-style-type: none"> <li>Data spacing for reporting of Exploration Results.</li> <li>Whether the data spacing and distribution is sufficient to establish the degree of geological and grade continuity appropriate for the Mineral Resource and Ore Reserve estimation procedure(s) and classifications applied.</li> <li>Whether sample compositing has been applied.</li> </ul>	<ul style="list-style-type: none"> <li>Not applicable, remote-sensing data is not applicable to Mineral Resource estimation procedures.</li> </ul>
Orientation of data in relation to geological structure	<ul style="list-style-type: none"> <li>Whether the orientation of sampling achieves unbiased sampling of possible structures and the extent to which this is known, considering the deposit type.</li> </ul>	<ul style="list-style-type: none"> <li>Not applicable, only regional datasets reported.</li> </ul>
Sample security	<ul style="list-style-type: none"> <li>The measures taken to ensure sample security.</li> </ul>	<ul style="list-style-type: none"> <li>Not applicable, no samples collected.</li> </ul>
Audits or reviews	<ul style="list-style-type: none"> <li>The results of any audits or reviews of sampling techniques and data.</li> </ul>	<ul style="list-style-type: none"> <li>Not applicable, no sampling data reported.</li> </ul>

**Section 2 Reporting of Exploration Results (Criteria listed in the preceding section also apply to this section.)**

Criteria	JORC Code explanation	Commentary
Mineral tenement and land tenure status	<ul style="list-style-type: none"> <li>Type, reference name/number, location and ownership including agreements or material issues with third parties such as joint ventures, partnerships, overriding royalties, native title interests, historical sites, wilderness or national park and environmental settings.</li> <li>The security of the tenure held at the time of reporting along with any known impediments to obtaining a license to operate in the area.</li> </ul>	The Uis Lithium-Tantalum-Tin Project (Uis Project – EPL7345 - 100% owned, EPL8535 – 80% owned and EPL 7626 – 100% owned) is located less than 5km from the township of Uis and less than 2.5km from the operating Uis Tin-Tantalum-Lithium Mine, owned and operated by Andrada Mining plc (LSE. ATM), within the Erongo Region of west-central Namibia. Swakopmund, the capital city of the Erongo Region and Namibia's fourth largest settlement is located approximately 165km south of the Uis Project, while the Namibian capital city of Windhoek is located approximately 270km southeast of the Uis Project.
Exploration done by other parties	<ul style="list-style-type: none"> <li>Acknowledgment and appraisal of exploration by other parties.</li> </ul>	The Uis Project boasts more than 100 mapped pegmatites across the project area, with many of the pegmatites having been mined historically for tin and semi-precious stones. Limited historic exploration of lithium in this region is being bolstered by high levels of modern exploration. No drilling for lithium has been previously reported. Andrada Mining Ltd (LON:ATM) are currently operating the Uis Tin mine next door to EPL7345 where they are also busy developing their lithium resource (81 Mt @ 0.73% Li <sub>2</sub> O, 0.15% Sn and 86ppm Ta – refer to Andrada Mining Ltd RNS announcement dated 6 February 2023) and the Spodumene Hill B1/C1 Project between EPL7345 and 8535. Recent drilling results from Andrada Mining Ltd at the Spodumene Hill Project has defined shallow high-grade lithium mineralisation, including, 14.52m at 1.38% Li <sub>2</sub> O, 285 ppm Ta and 0.131% Sn from a depth of 15.48m, including 5m at 2.32% Li <sub>2</sub> O from 18m and 2.5m at 2.04% Li <sub>2</sub> O from 25.5m. Refer to Andrada Mining Ltd RNS announcement dated 6 July 2023
Geology	<ul style="list-style-type: none"> <li>Deposit type, geological setting and style of mineralisation.</li> </ul>	<p>The rocks of the Erongo Region, and specifically the Dâures Constituency, are represented by rocks of the Khomas Subgroup, a division of the Swakop Group of the Damara Sequence, which have been intruded by numerous zones and unzoned mineralised pegmatites rich in cassiterite, lepidolite, petalite, amblygonite, spodumene, tantalite, columbite, beryl, gem tourmaline, and rare to sparse sulphides, wolframite, scheelite, pollucite or rare earth metals.</p> <p>The Uis and Nainais-Kohero swarm of pegmatites represents the fillings of en-echelon tension gashes that formed as a result of shearing of a regional nature, which evolved slowly over considerable geological time. These pegmatites are pervasively altered or extensively albitised, with only relics of the original potassium feldspars left after their widespread replacement by albite. They are remarkably similar in composition, except for the varying intensity of pneumatolytic effects, and the introduction or concentration of trace elements during the final stages of crystallisation has resulted in complex pegmatite mineralogies. These pegmatites are found within schistose and quartzose rocks of the Khomas Subgroup, a division of the Swakop Group, which have been subjected to intense tectonic deformation and regional metamorphism. Detailed geological mapping within the Uis area suggests that the Uis swarm of pegmatites consists of over 100 individual pegmatite bodies. Shearing opened spaces within the Khomas Subgroup country rocks, spaces in which pegmatite or quartz veins were subsequently intruded. Within the Nainais pegmatites, high tin values are found in smaller altered mica-rich pegmatites near the pegmatite edges. The pegmatite mineralisation composition changes in the distance</p>

Criteria	JORC Code explanation	Commentary
		from the granitic contacts with a mineral crystallisation sequence having been mapped, which indicates garnet and schorl occurring closest to the granitic contacts, the cassiterite and lithium-tourmaline occurring further away therefrom, and the tantalite being associated with lithium-tourmaline and quartz blows.
Drill hole Information	<ul style="list-style-type: none"> <li>A summary of all information material to the understanding of the exploration results including a tabulation of the following information for all Material drill holes:</li> </ul>	<ul style="list-style-type: none"> <li>Not applicable, no drilling completed.</li> </ul>
Data aggregation methods	<ul style="list-style-type: none"> <li>In reporting Exploration Results, weighting averaging techniques, maximum and/or minimum grade truncations (eg cutting of high grades) and cut-off grades are usually Material and should be stated.</li> <li>Where aggregate intercepts incorporate short lengths of high grade results and longer lengths of low grade results, the procedure used for such aggregation should be stated and some typical examples of such aggregations should be shown in detail.</li> </ul>	<ul style="list-style-type: none"> <li>Not applicable, no grade aggregation, weighting, or cut-off methods were used for this announcement.</li> </ul>
Relationship between mineralisation widths and intercept lengths	<ul style="list-style-type: none"> <li>These relationships are particularly important in the reporting of Exploration Results.</li> <li>If the geometry of the mineralisation with respect to the drill hole angle is known, its nature should be reported.</li> </ul>	<ul style="list-style-type: none"> <li>Not applicable, no mineralisation widths or intercepts reported.</li> </ul>
Diagrams	<ul style="list-style-type: none"> <li>Appropriate maps and sections (with scales) and tabulations of intercepts should be included for any significant discovery being reported These should include, but not be limited to a plan view of drill hole collar locations and appropriate sectional views.</li> </ul>	<ul style="list-style-type: none"> <li>Diagrams are included in the body of the document.</li> </ul>
Balanced reporting	<ul style="list-style-type: none"> <li>Where comprehensive reporting of all Exploration Results is not practicable, representative reporting of both low and high grades and/or widths should be practiced to avoid misleading reporting of results.</li> </ul>	<ul style="list-style-type: none"> <li>Not applicable, no grades and/or widths reported.</li> </ul>
Other substantive exploration data	<ul style="list-style-type: none"> <li>Other exploration data, if meaningful and material, should be reported including (but not limited to): geological observations; geophysical survey results; geochemical survey results; bulk samples – size and method of treatment; metallurgical test results; bulk density, groundwater, geotechnical and rock characteristics; potential deleterious or contaminating substances.</li> </ul>	<ul style="list-style-type: none"> <li>Provided in the body of the document.</li> </ul>
Further work	<ul style="list-style-type: none"> <li>The nature and scale of planned further work (eg tests for lateral extensions or depth extensions or large-scale step-out drilling).</li> </ul>	<ul style="list-style-type: none"> <li>Detailed mapping and rock chip sampling of promising new targets on EPL8535 and EPL7345.</li> </ul>

Criteria	JORC Code explanation	Commentary
		<ul style="list-style-type: none"><li data-bbox="1122 236 2141 293">• Stream sediment and soil geochemical programmes across the "Corridor of Interest" with an aim to delineate further anomalous areas.</li></ul>

personal use only

